



Full wwPDB EM Validation Report ⓘ

Jul 7, 2025 – 05:03 PM EDT

PDB ID : 9OA1 / pdb_00009oa1
EMDB ID : EMD-70269
Title : Ecoli DnaB helicase and Phage Lambda loader P with ADP-Mg in a 6:5 stoichiometry ratio.
Authors : Shatarupa, A.; Brown, D.; Olinares, P.D.B.; Chase, J.; Isiorho, E.; Chait, B.T.; Jeruzalmi, D.
Deposited on : 2025-04-18
Resolution : 2.66 Å(reported)
Based on initial models : 1B79, 8V9S, .

This is a Full wwPDB EM Validation Report for a publicly released PDB entry.

We welcome your comments at validation@mail.wwpdb.org

A user guide is available at

<https://www.wwpdb.org/validation/2017/EMValidationReportHelp>

with specific help available everywhere you see the ⓘ symbol.

The types of validation reports are described at

<http://www.wwpdb.org/validation/2017/FAQs#types>.

The following versions of software and data (see [references ⓘ](#)) were used in the production of this report:

EMDB validation analysis : 0.0.1.dev118
Mogul : 2022.3.0, CSD as543be (2022)
MolProbity : 4-5-2 with Phenix2.0rc1
buster-report : 1.1.7 (2018)
Percentile statistics : 20231227.v01 (using entries in the PDB archive December 27th 2023)
MapQ : 1.9.13
Ideal geometry (proteins) : Engh & Huber (2001)
Ideal geometry (DNA, RNA) : Parkinson et al. (1996)
Validation Pipeline (wwPDB-VP) : 2.44

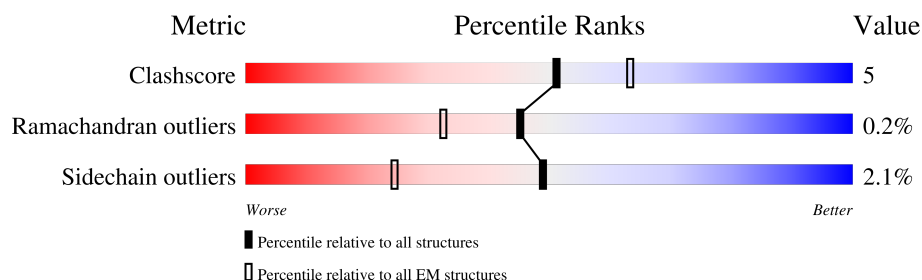
1 Overall quality at a glance

The following experimental techniques were used to determine the structure:

ELECTRON MICROSCOPY

The reported resolution of this entry is 2.66 Å.

Percentile scores (ranging between 0-100) for global validation metrics of the entry are shown in the following graphic. The table shows the number of entries on which the scores are based.






Metric	Whole archive (#Entries)	EM structures (#Entries)
Clashscore	210492	15764
Ramachandran outliers	207382	16835
Sidechain outliers	206894	16415

The table below summarises the geometric issues observed across the polymeric chains and their fit to the map. The red, orange, yellow and green segments of the bar indicate the fraction of residues that contain outliers for ≥ 3 , 2, 1 and 0 types of geometric quality criteria respectively. A grey segment represents the fraction of residues that are not modelled. The numeric value for each fraction is indicated below the corresponding segment, with a dot representing fractions $\leq 5\%$. The upper red bar (where present) indicates the fraction of residues that have poor fit to the EM map (all-atom inclusion $< 40\%$). The numeric value is given above the bar.

Mol	Chain	Length	Quality of chain
1	A	471	
1	B	471	
1	C	471	
1	D	471	
1	E	471	
1	F	471	
2	V	233	
2	W	233	

Continued on next page...

Continued from previous page...

Mol	Chain	Length	Quality of chain
2	X	233	
2	Y	233	
2	Z	233	

2 Entry composition

There are 4 unique types of molecules in this entry. The entry contains 28943 atoms, of which 0 are hydrogens and 0 are deuteriums.

In the tables below, the AltConf column contains the number of residues with at least one atom in alternate conformation and the Trace column contains the number of residues modelled with at most 2 atoms.

- Molecule 1 is a protein called Replicative DNA helicase.

Mol	Chain	Residues	Atoms					AltConf	Trace
1	A	417	Total	C	N	O	S	0	0
			3255	2021	582	639	13		
1	B	453	Total	C	N	O	S	0	0
			3534	2193	632	696	13		
1	C	450	Total	C	N	O	S	0	0
			3506	2178	626	689	13		
1	D	451	Total	C	N	O	S	0	0
			3514	2182	627	692	13		
1	E	450	Total	C	N	O	S	0	0
			3506	2178	626	689	13		
1	F	445	Total	C	N	O	S	0	0
			3474	2158	620	683	13		

- Molecule 2 is a protein called Helicase loader.

Mol	Chain	Residues	Atoms					AltConf	Trace
2	V	193	Total	C	N	O	S	0	0
			1531	962	286	275	8		
2	W	193	Total	C	N	O	S	0	0
			1531	962	286	275	8		
2	X	193	Total	C	N	O	S	0	0
			1531	962	286	275	8		
2	Y	196	Total	C	N	O	S	0	0
			1553	976	290	279	8		
2	Z	230	Total	C	N	O	S	0	0
			1840	1150	344	335	11		

There are 5 discrepancies between the modelled and reference sequences:

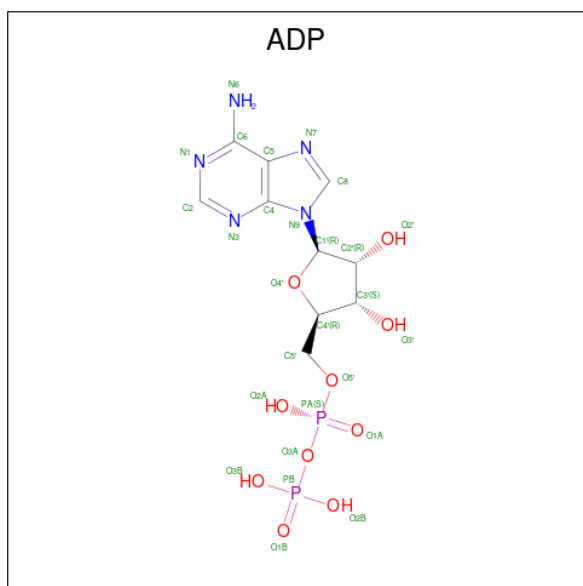
Chain	Residue	Modelled	Actual	Comment	Reference
V	2	GLU	LYS	engineered mutation	UNP P03689
W	2	GLU	LYS	engineered mutation	UNP P03689
X	2	GLU	LYS	engineered mutation	UNP P03689
Y	2	GLU	LYS	engineered mutation	UNP P03689

Continued on next page...

Continued from previous page...

Chain	Residue	Modelled	Actual	Comment	Reference
Z	2	GLU	LYS	engineered mutation	UNP P03689

- Molecule 3 is ADENOSINE-5'-DIPHOSPHATE (CCD ID: ADP) (formula: $C_{10}H_{15}N_5O_{10}P_2$) (labeled as "Ligand of Interest" by depositor).



Mol	Chain	Residues	Atoms					AltConf
3	A	1	Total	C	N	O	P	0
			27	10	5	10	2	
3	B	1	Total	C	N	O	P	0
			27	10	5	10	2	
3	C	1	Total	C	N	O	P	0
			27	10	5	10	2	
3	D	1	Total	C	N	O	P	0
			27	10	5	10	2	
3	E	1	Total	C	N	O	P	0
			27	10	5	10	2	
3	F	1	Total	C	N	O	P	0
			27	10	5	10	2	

- Molecule 4 is MAGNESIUM ION (CCD ID: MG) (formula: Mg) (labeled as "Ligand of Interest" by depositor).

Mol	Chain	Residues	Atoms		AltConf
4	A	1	Total	Mg	0
			1	1	
4	B	1	Total	Mg	0
			1	1	

Continued on next page...

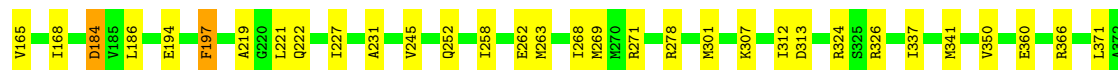
Continued from previous page...

Mol	Chain	Residues	Atoms		AltConf
4	C	1	Total 1	Mg 1	0
4	D	1	Total 1	Mg 1	0
4	E	1	Total 1	Mg 1	0
4	F	1	Total 1	Mg 1	0



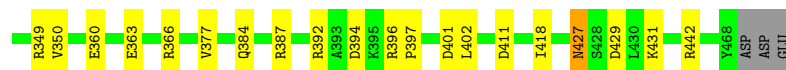
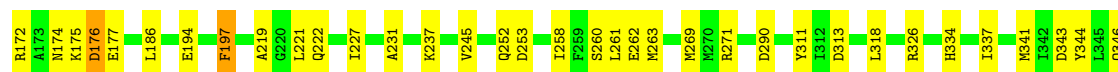
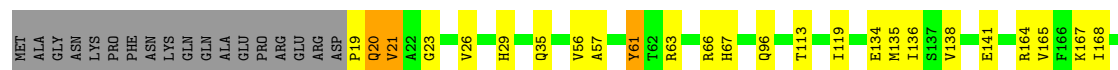
• Molecule 1: Replicative DNA helicase

Chain D: 81% 14% . .



• Molecule 1: Replicative DNA helicase

Chain E: 79% 16% . .



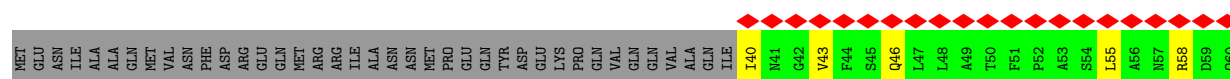
• Molecule 1: Replicative DNA helicase

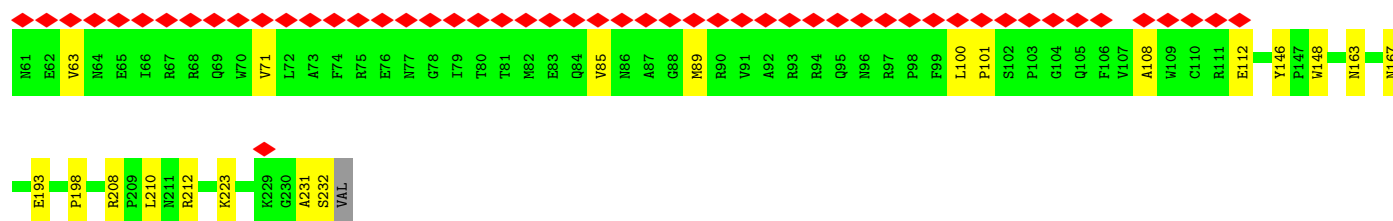
Chain F: 77% 16% 6%



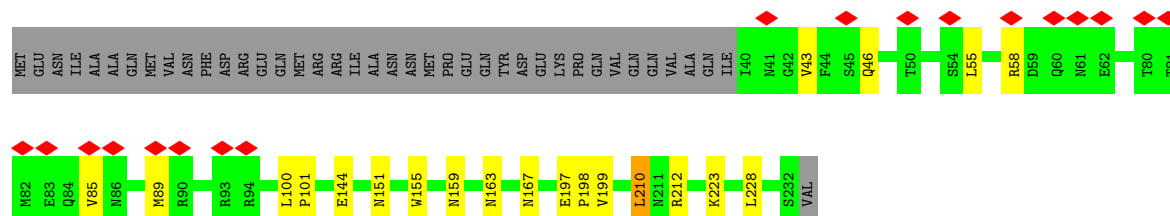
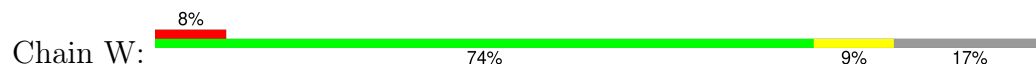
• Molecule 2: Helicase loader

Chain V: 31% 72% 11% 17%

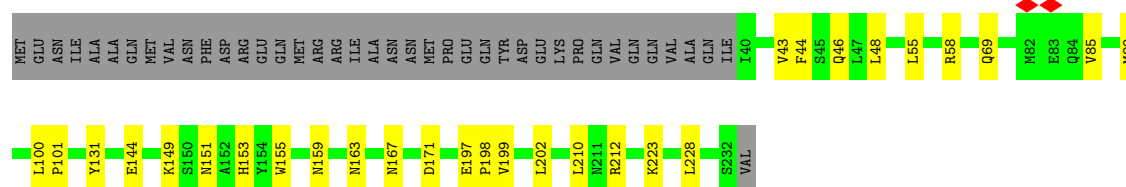




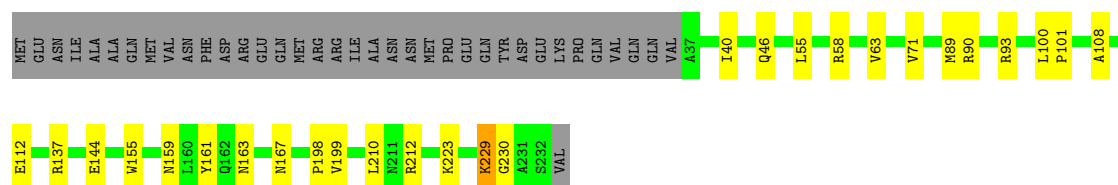
- Molecule 2: Helicase loader



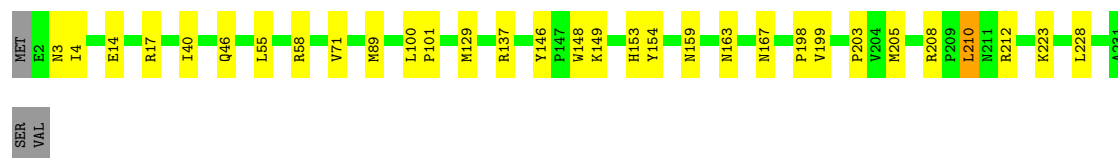
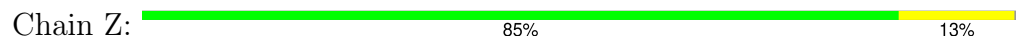
- Molecule 2: Helicase loader



- Molecule 2: Helicase loader



- Molecule 2: Helicase loader



4 Experimental information

Property	Value	Source
EM reconstruction method	SINGLE PARTICLE	Depositor
Imposed symmetry	POINT, C1	Depositor
Number of particles used	1500880	Depositor
Resolution determination method	FSC 0.143 CUT-OFF	Depositor
CTF correction method	PHASE FLIPPING AND AMPLITUDE CORRECTION	Depositor
Microscope	TFS KRIOS	Depositor
Voltage (kV)	300	Depositor
Electron dose ($e^-/\text{\AA}^2$)	51.01	Depositor
Minimum defocus (nm)	1000	Depositor
Maximum defocus (nm)	2500	Depositor
Magnification	81000	Depositor
Image detector	GATAN K3 (6k x 4k)	Depositor
Maximum map value	1.459	Depositor
Minimum map value	-0.471	Depositor
Average map value	-0.000	Depositor
Map value standard deviation	0.020	Depositor
Recommended contour level	0.0348	Depositor
Map size (Å)	433.19998, 433.19998, 433.19998	wwPDB
Map dimensions	400, 400, 400	wwPDB
Map angles (°)	90.0, 90.0, 90.0	wwPDB
Pixel spacing (Å)	1.083, 1.083, 1.083	Depositor

5 Model quality

5.1 Standard geometry

Bond lengths and bond angles in the following residue types are not validated in this section: MG, ADP

The Z score for a bond length (or angle) is the number of standard deviations the observed value is removed from the expected value. A bond length (or angle) with $|Z| > 5$ is considered an outlier worth inspection. RMSZ is the root-mean-square of all Z scores of the bond lengths (or angles).

Mol	Chain	Bond lengths		Bond angles	
		RMSZ	$\# Z > 5$	RMSZ	$\# Z > 5$
1	A	0.11	0/3301	0.31	0/4460
1	B	0.11	0/3585	0.32	0/4848
1	C	0.12	0/3557	0.34	0/4810
1	D	0.12	0/3565	0.33	0/4822
1	E	0.12	0/3557	0.33	0/4810
1	F	0.12	0/3524	0.32	0/4765
2	V	0.10	0/1563	0.34	1/2117 (0.0%)
2	W	0.11	0/1563	0.32	0/2117
2	X	0.11	0/1563	0.32	0/2117
2	Y	0.11	0/1585	0.31	0/2147
2	Z	0.10	0/1876	0.30	0/2539
All	All	0.11	0/29239	0.32	1/39552 (0.0%)

There are no bond length outliers.

All (1) bond angle outliers are listed below:

Mol	Chain	Res	Type	Atoms	Z	Observed($^{\circ}$)	Ideal($^{\circ}$)
2	V	231	ALA	CB-CA-C	-5.26	110.49	116.54

There are no chirality outliers.

There are no planarity outliers.

5.2 Too-close contacts

In the following table, the Non-H and H(model) columns list the number of non-hydrogen atoms and hydrogen atoms in the chain respectively. The H(added) column lists the number of hydrogen atoms added and optimized by MolProbity. The Clashes column lists the number of clashes within the asymmetric unit, whereas Symm-Clashes lists symmetry-related clashes.

Mol	Chain	Non-H	H(model)	H(added)	Clashes	Symm-Clashes
1	A	3255	0	3246	37	0
1	B	3534	0	3522	42	0
1	C	3506	0	3501	52	0
1	D	3514	0	3504	46	0
1	E	3506	0	3500	55	0
1	F	3474	0	3467	55	0
2	V	1531	0	1532	14	0
2	W	1531	0	1532	14	0
2	X	1531	0	1532	17	0
2	Y	1553	0	1556	19	0
2	Z	1840	0	1830	16	0
3	A	27	0	12	1	0
3	B	27	0	12	1	0
3	C	27	0	12	0	0
3	D	27	0	12	0	0
3	E	27	0	12	0	0
3	F	27	0	12	0	0
4	A	1	0	0	0	0
4	B	1	0	0	0	0
4	C	1	0	0	0	0
4	D	1	0	0	0	0
4	E	1	0	0	0	0
4	F	1	0	0	0	0
All	All	28943	0	28794	306	0

The all-atom clashscore is defined as the number of clashes found per 1000 atoms (including hydrogen atoms). The all-atom clashscore for this structure is 5.

All (306) close contacts within the same asymmetric unit are listed below, sorted by their clash magnitude.

Atom-1	Atom-2	Interatomic distance (Å)	Clash overlap (Å)
1:B:165:VAL:HG21	1:C:165:VAL:HG21	1.62	0.82
1:D:165:VAL:HG21	1:E:165:VAL:HG21	1.63	0.80
1:F:39:GLY:HA3	1:F:113:THR:HG21	1.73	0.71
1:F:429:ASP:HA	2:Y:199:VAL:HG21	1.73	0.71
2:Y:40:ILE:HD13	2:Y:71:VAL:HG22	1.73	0.70
1:E:245:VAL:HG11	1:E:258:ILE:HD11	1.74	0.70
1:C:245:VAL:HG11	1:C:258:ILE:HD11	1.74	0.69
2:Z:14:GLU:HB3	2:Z:17:ARG:HB3	1.74	0.68
1:B:363:GLU:OE1	1:C:349:ARG:NH2	2.27	0.68
1:D:39:GLY:HA3	1:D:113:THR:HG21	1.76	0.67
1:F:245:VAL:HG11	1:F:258:ILE:HD11	1.74	0.67

Continued on next page...

Continued from previous page...

Atom-1	Atom-2	Interatomic distance (Å)	Clash overlap (Å)
1:E:26:VAL:HG11	1:F:43:LEU:HD22	1.76	0.66
1:C:288:GLN:HB3	2:V:208:ARG:HD3	1.76	0.66
1:C:313:ASP:OD2	1:C:326:ARG:NH1	2.29	0.66
1:C:127:ARG:O	1:C:129:ARG:N	2.29	0.65
1:C:402:LEU:HB2	1:D:387:ARG:HH22	1.62	0.65
1:E:167:LYS:NZ	1:E:177:GLU:OE2	2.30	0.64
1:A:165:VAL:HG21	1:F:165:VAL:HG21	1.77	0.64
1:B:197:PHE:HE2	2:V:212:ARG:HA	1.61	0.64
1:B:245:VAL:HG11	1:B:258:ILE:HD11	1.80	0.64
1:E:134:GLU:HG3	1:E:175:LYS:HA	1.80	0.63
1:E:141:GLU:OE1	1:E:164:ARG:NH1	2.32	0.63
1:E:186:LEU:HG	1:F:301:MET:HE3	1.81	0.63
2:Y:229:LYS:HD2	2:Y:230:GLY:H	1.64	0.63
1:D:245:VAL:HG11	1:D:258:ILE:HD11	1.80	0.62
1:D:429:ASP:HA	2:W:199:VAL:HG21	1.81	0.62
1:E:313:ASP:OD2	1:E:326:ARG:NH1	2.33	0.62
1:F:59:ASP:OD1	1:F:172:ARG:NH1	2.33	0.62
2:Z:208:ARG:NH1	2:Z:210:LEU:O	2.33	0.62
2:Z:163:ASN:OD1	2:Z:167:ASN:ND2	2.33	0.61
1:B:324:ARG:HG3	1:B:371:LEU:HD13	1.82	0.61
1:E:337:ILE:HB	1:E:377:VAL:HG11	1.81	0.61
1:B:128:GLU:HG3	1:C:154:SER:HB3	1.82	0.61
1:D:350:VAL:HB	1:D:360:GLU:HG3	1.83	0.61
2:Y:163:ASN:OD1	2:Y:167:ASN:ND2	2.34	0.60
1:C:288:GLN:OE1	2:V:208:ARG:NH1	2.34	0.60
2:W:163:ASN:OD1	2:W:167:ASN:ND2	2.32	0.60
2:Z:40:ILE:HG12	2:Z:71:VAL:HG22	1.84	0.60
1:A:369:LYS:HE3	1:A:373:LYS:HE3	1.84	0.60
1:E:431:LYS:NZ	2:X:144:GLU:OE2	2.33	0.60
1:F:431:LYS:NZ	2:Y:144:GLU:OE2	2.35	0.60
1:A:245:VAL:HG11	1:A:258:ILE:HD11	1.83	0.60
1:C:337:ILE:HB	1:C:377:VAL:HG11	1.84	0.60
1:D:441:GLN:NE2	1:D:445:PRO:O	2.34	0.60
1:E:402:LEU:HB2	1:F:387:ARG:HH22	1.67	0.60
1:A:311:TYR:OH	1:A:334:HIS:NE2	2.35	0.59
1:A:350:VAL:HB	1:A:360:GLU:HG3	1.84	0.59
2:W:55:LEU:HA	2:W:58:ARG:HD2	1.85	0.59
1:D:194:GLU:OE1	2:X:223:LYS:NZ	2.34	0.59
1:D:324:ARG:HG3	1:D:371:LEU:HD13	1.85	0.59
1:D:313:ASP:OD2	1:D:326:ARG:NH1	2.30	0.59
1:D:221:LEU:HD22	1:D:227:ILE:HD13	1.84	0.59

Continued on next page...

Continued from previous page...

Atom-1	Atom-2	Interatomic distance (Å)	Clash overlap (Å)
1:F:313:ASP:OD2	1:F:326:ARG:NH1	2.35	0.58
1:A:392:ARG:NH1	1:A:394:ASP:O	2.36	0.58
1:C:311:TYR:HH	1:C:334:HIS:CE1	2.20	0.58
1:F:350:VAL:HB	1:F:360:GLU:HG3	1.85	0.58
1:D:186:LEU:HD13	1:E:269:MET:HE2	1.84	0.58
1:E:427:ASN:OD1	1:E:427:ASN:N	2.36	0.58
1:A:232:ARG:NH1	1:A:385:LEU:O	2.37	0.58
1:F:392:ARG:NH1	1:F:394:ASP:O	2.36	0.58
1:D:429:ASP:N	1:D:429:ASP:OD1	2.35	0.57
1:C:164:ARG:NH1	1:C:176:ASP:OD2	2.36	0.57
1:F:24:LEU:HD13	1:F:26:VAL:HG23	1.86	0.57
1:A:324:ARG:HG3	1:A:371:LEU:HD13	1.86	0.57
1:E:176:ASP:N	1:E:176:ASP:OD1	2.36	0.57
1:D:337:ILE:HB	1:D:377:VAL:HG11	1.86	0.56
2:V:55:LEU:HD13	2:V:63:VAL:HG22	1.86	0.56
2:V:163:ASN:OD1	2:V:167:ASN:ND2	2.38	0.56
1:C:176:ASP:N	1:C:176:ASP:OD1	2.37	0.56
2:Y:55:LEU:HA	2:Y:58:ARG:HD2	1.88	0.56
1:E:350:VAL:HB	1:E:360:GLU:HG3	1.88	0.56
1:E:197:PHE:O	2:Y:212:ARG:NH1	2.39	0.56
2:Y:100:LEU:HD12	2:Y:101:PRO:HD2	1.87	0.56
1:F:324:ARG:HG3	1:F:371:LEU:HD13	1.88	0.55
1:F:47:ARG:HD3	1:F:119:ILE:HG12	1.88	0.55
1:E:429:ASP:HA	2:X:199:VAL:HG21	1.88	0.55
1:C:350:VAL:HB	1:C:360:GLU:HG3	1.89	0.54
1:B:337:ILE:HB	1:B:377:VAL:HG11	1.89	0.54
1:F:197:PHE:O	2:Z:212:ARG:NH1	2.41	0.54
1:F:71:GLU:OE2	1:F:74:ARG:NH1	2.41	0.54
2:V:55:LEU:HA	2:V:58:ARG:HD2	1.90	0.54
1:F:355:ASP:OD1	1:F:355:ASP:N	2.39	0.54
1:E:172:ARG:O	1:E:174:ASN:N	2.41	0.54
1:A:60:PHE:O	1:A:66:ARG:NE	2.39	0.53
1:D:411:ASP:OD1	1:E:344:TYR:OH	2.25	0.53
1:D:442:ARG:HH22	1:E:262:GLU:HB3	1.74	0.53
1:E:194:GLU:OE1	2:Y:223:LYS:NZ	2.38	0.53
2:X:55:LEU:HA	2:X:58:ARG:HD2	1.91	0.53
2:V:40:ILE:HG21	2:V:71:VAL:HG22	1.91	0.53
1:D:431:LYS:NZ	2:W:144:GLU:OE2	2.42	0.53
2:W:100:LEU:HD12	2:W:101:PRO:HD2	1.91	0.53
1:D:71:GLU:OE2	1:D:74:ARG:NH1	2.42	0.53
1:D:219:ALA:O	1:D:222:GLN:NE2	2.42	0.52

Continued on next page...

Continued from previous page...

Atom-1	Atom-2	Interatomic distance (Å)	Clash overlap (Å)
1:B:454:ASN:O	1:B:458:SER:N	2.42	0.52
1:E:67:HIS:NE2	1:E:96:GLN:OE1	2.35	0.52
1:A:405:SER:HB3	1:A:408:ILE:HD12	1.90	0.52
1:B:194:GLU:OE1	2:V:223:LYS:NZ	2.40	0.52
1:F:194:GLU:OE1	2:Z:223:LYS:NZ	2.41	0.52
2:Z:55:LEU:HA	2:Z:58:ARG:HD2	1.91	0.52
1:D:402:LEU:HB2	1:E:387:ARG:HH22	1.74	0.52
1:F:258:ILE:HG23	1:F:341:MET:HE3	1.91	0.52
2:W:155:TRP:O	2:W:159:ASN:ND2	2.34	0.52
1:A:337:ILE:HB	1:A:377:VAL:HG11	1.92	0.52
1:D:197:PHE:O	2:X:212:ARG:NH1	2.43	0.52
2:V:100:LEU:HD12	2:V:101:PRO:HD2	1.92	0.51
1:A:311:TYR:HH	1:A:334:HIS:HE2	1.54	0.51
1:D:47:ARG:HD3	1:D:119:ILE:HG12	1.92	0.51
1:B:186:LEU:HD13	1:C:269:MET:HE2	1.92	0.51
1:C:187:ASP:OD1	2:W:228:LEU:HD22	2.10	0.51
1:D:258:ILE:HG23	1:D:341:MET:HE3	1.90	0.51
1:D:366:ARG:HD2	1:E:349:ARG:HE	1.76	0.51
1:A:48:TRP:CD1	1:A:76:GLN:HG2	2.46	0.51
1:A:269:MET:HE2	1:F:186:LEU:HD13	1.93	0.51
1:B:162:GLU:HG2	1:C:332:ARG:HH11	1.76	0.51
2:X:155:TRP:O	2:X:159:ASN:ND2	2.31	0.51
1:B:67:HIS:NE2	1:B:96:GLN:OE1	2.43	0.50
1:D:41:LEU:HD11	1:D:51:VAL:HG11	1.92	0.50
2:V:46:GLN:HB3	2:V:89:MET:HE2	1.94	0.50
1:B:258:ILE:HB	1:B:312:ILE:HG12	1.93	0.50
1:F:221:LEU:HD22	1:F:227:ILE:HD13	1.93	0.50
1:B:231:ALA:HB2	1:B:418:ILE:HB	1.94	0.49
1:C:67:HIS:NE2	1:C:96:GLN:OE1	2.42	0.49
1:E:411:ASP:OD1	1:F:344:TYR:OH	2.28	0.49
1:A:234:SER:HA	3:A:500:ADP:H5'1	1.95	0.49
1:E:219:ALA:O	1:E:222:GLN:NE2	2.46	0.49
1:C:392:ARG:NH2	1:C:401:ASP:OD2	2.46	0.49
2:Y:223:LYS:HB3	2:Y:229:LYS:HE2	1.94	0.49
1:C:48:TRP:CD1	1:C:76:GLN:HG2	2.48	0.49
1:C:194:GLU:OE1	2:W:223:LYS:NZ	2.37	0.48
1:E:221:LEU:HD22	1:E:227:ILE:HD13	1.95	0.48
2:V:43:VAL:HG22	2:V:85:VAL:HG11	1.95	0.48
1:B:29:HIS:HB2	1:B:61:TYR:CD2	2.48	0.48
1:D:48:TRP:CD1	1:D:76:GLN:HG2	2.48	0.48
1:C:392:ARG:NH1	1:C:394:ASP:O	2.46	0.48

Continued on next page...

Continued from previous page...

Atom-1	Atom-2	Interatomic distance (Å)	Clash overlap (Å)
1:B:337:ILE:HD12	1:B:375:LEU:HD13	1.95	0.48
1:F:127:ARG:NH1	1:F:172:ARG:HD2	2.27	0.48
1:D:262:GLU:HG2	1:D:263:MET:HG3	1.95	0.48
1:B:264:PRO:HG2	1:B:267:GLN:HG3	1.96	0.48
2:X:163:ASN:OD1	2:X:167:ASN:ND2	2.46	0.48
1:A:68:ILE:HG22	1:A:72:MET:HE2	1.95	0.48
1:A:158:LEU:HD21	1:F:168:ILE:HG22	1.96	0.48
2:W:43:VAL:HG22	2:W:85:VAL:HG11	1.96	0.48
1:A:91:LEU:HD12	1:A:106:LEU:HD11	1.96	0.47
1:C:454:ASN:ND2	1:C:461:ASP:OD2	2.47	0.47
1:E:197:PHE:HE2	2:Y:212:ARG:HA	1.78	0.47
1:A:172:ARG:NH1	1:F:154:SER:OG	2.48	0.47
1:D:138:VAL:HG21	1:D:168:ILE:HD11	1.96	0.47
1:C:355:ASP:OD1	1:C:355:ASP:N	2.47	0.47
1:F:29:HIS:HB2	1:F:61:TYR:CE2	2.50	0.47
1:F:34:GLU:OE1	1:F:65:HIS:ND1	2.44	0.47
2:W:46:GLN:HB3	2:W:89:MET:HE2	1.95	0.47
2:Y:46:GLN:HB3	2:Y:89:MET:HE2	1.97	0.47
1:C:29:HIS:HB2	1:C:61:TYR:CD2	2.49	0.47
2:X:69:GLN:OE1	2:Y:93:ARG:NH1	2.36	0.47
1:C:219:ALA:O	1:C:222:GLN:NE2	2.48	0.47
1:F:337:ILE:HB	1:F:377:VAL:HG11	1.97	0.47
1:C:425:HIS:HB2	1:C:428:SER:HB2	1.97	0.46
1:B:125:ILE:O	1:B:129:ARG:HG2	2.15	0.46
1:E:29:HIS:HB2	1:E:61:TYR:CE2	2.50	0.46
1:C:34:GLU:OE1	1:C:65:HIS:ND1	2.34	0.46
1:E:252:GLN:HG2	1:E:253:ASP:H	1.80	0.46
1:F:119:ILE:H	1:F:119:ILE:HG13	1.49	0.46
2:Y:229:LYS:HD2	2:Y:230:GLY:N	2.30	0.46
1:D:252:GLN:O	1:D:307:LYS:NZ	2.45	0.46
1:A:67:HIS:NE2	1:A:96:GLN:OE1	2.48	0.46
1:A:154:SER:HB2	1:F:131:VAL:HG11	1.98	0.46
1:E:261:LEU:HD21	1:E:318:LEU:H	1.80	0.46
1:B:47:ARG:HD3	1:B:119:ILE:HD11	1.98	0.46
1:B:442:ARG:HH12	1:C:262:GLU:HG2	1.80	0.46
1:C:278:ARG:HE	1:C:459:ARG:NH1	2.13	0.46
2:X:151:ASN:HD21	2:X:197:GLU:CD	2.23	0.46
1:C:344:TYR:CE2	1:C:346:GLN:HB2	2.51	0.46
2:X:43:VAL:HG22	2:X:85:VAL:HG11	1.98	0.46
1:D:184:ASP:OD1	1:D:184:ASP:N	2.47	0.45
1:E:392:ARG:NH1	1:E:394:ASP:O	2.49	0.45

Continued on next page...

Continued from previous page...

Atom-1	Atom-2	Interatomic distance (Å)	Clash overlap (Å)
2:Z:149:LYS:HB2	2:Z:153:HIS:HD1	1.81	0.45
1:B:245:VAL:HG13	1:B:256:VAL:HG11	1.98	0.45
1:B:340:ILE:HB	1:B:379:VAL:HG22	1.97	0.45
1:E:442:ARG:HH12	1:F:262:GLU:HG2	1.81	0.45
1:F:48:TRP:CD1	1:F:76:GLN:HG2	2.50	0.45
1:C:175:LYS:H	1:C:175:LYS:HD3	1.81	0.45
1:C:221:LEU:HD22	1:C:227:ILE:HD13	1.97	0.45
1:D:373:LYS:NZ	1:E:260:SER:O	2.49	0.45
1:E:186:LEU:HD13	1:F:269:MET:HE2	1.98	0.45
1:D:278:ARG:HE	1:D:459:ARG:NH1	2.14	0.45
2:Z:100:LEU:HD12	2:Z:101:PRO:HD2	1.96	0.45
1:B:348:MET:HB2	1:B:364:ILE:HD13	1.99	0.45
1:C:197:PHE:CE2	2:W:212:ARG:HA	2.52	0.45
1:F:160:LEU:O	1:F:164:ARG:HG2	2.16	0.45
1:B:255:PRO:HB3	1:B:311:TYR:HE1	1.82	0.45
1:E:35:GLN:O	1:E:113:THR:HG21	2.17	0.45
1:E:363:GLU:OE2	1:E:366:ARG:NH2	2.42	0.45
1:B:18:ASP:OD1	1:B:21:VAL:N	2.50	0.44
1:C:252:GLN:HG2	1:C:253:ASP:H	1.82	0.44
1:E:311:TYR:HH	1:E:334:HIS:CE1	2.35	0.44
2:X:46:GLN:HB3	2:X:89:MET:HE2	1.98	0.44
1:B:39:GLY:HA3	1:B:113:THR:OG1	2.16	0.44
1:B:204:VAL:HG22	1:B:215:ASN:HB3	2.00	0.44
1:F:138:VAL:HB	1:F:168:ILE:HD11	1.99	0.44
1:F:357:ARG:NH1	1:F:360:GLU:OE1	2.50	0.44
1:A:28:PRO:O	1:A:61:TYR:OH	2.26	0.44
1:A:89:GLU:HG2	1:A:93:ARG:HH11	1.82	0.44
1:A:429:ASP:HA	2:Z:199:VAL:HG21	2.00	0.44
1:E:20:GLN:HB3	1:E:21:VAL:H	1.68	0.44
1:E:427:ASN:HB3	2:X:155:TRP:CZ3	2.53	0.44
1:F:252:GLN:HG2	1:F:253:ASP:H	1.82	0.44
1:A:337:ILE:HD12	1:A:375:LEU:HD13	1.99	0.44
1:B:221:LEU:HD22	1:B:227:ILE:HD13	2.00	0.44
1:C:311:TYR:OH	1:C:334:HIS:NE2	2.40	0.44
1:F:237:LYS:HB3	1:F:382:LEU:HD23	2.00	0.44
2:X:100:LEU:HD12	2:X:101:PRO:HD2	2.00	0.44
2:Y:137:ARG:HD3	2:Y:161:TYR:CZ	2.52	0.44
1:B:235:MET:N	3:B:500:ADP:O3B	2.48	0.44
1:B:237:LYS:HA	1:B:418:ILE:HD12	2.00	0.43
1:C:186:LEU:HD13	1:D:269:MET:HE2	2.00	0.43
1:F:68:ILE:HD11	1:F:100:VAL:HG13	2.00	0.43

Continued on next page...

Continued from previous page...

Atom-1	Atom-2	Interatomic distance (Å)	Clash overlap (Å)
1:D:258:ILE:HD12	1:D:312:ILE:HG12	2.01	0.43
1:E:343:ASP:HA	1:E:344:TYR:HA	1.75	0.43
1:B:71:GLU:OE2	1:B:74:ARG:NH1	2.51	0.43
1:C:73:ALA:O	1:C:77:GLU:HG2	2.18	0.43
1:A:261:LEU:HD21	1:A:318:LEU:HB2	2.00	0.43
1:C:35:GLN:O	1:C:113:THR:HG21	2.19	0.43
1:F:64:PRO:HB3	1:F:100:VAL:O	2.19	0.43
1:F:67:HIS:HE1	1:F:96:GLN:HB3	1.83	0.43
1:F:39:GLY:O	1:F:43:LEU:HG	2.18	0.43
1:D:263:MET:HE1	1:D:271:ARG:HD2	2.01	0.43
1:A:344:TYR:OH	1:F:411:ASP:OD1	2.34	0.43
1:C:186:LEU:HG	1:D:301:MET:HE3	2.01	0.43
1:A:208:ASN:OD1	1:A:215:ASN:ND2	2.51	0.42
1:C:429:ASP:OD1	1:C:429:ASP:N	2.50	0.42
1:D:147:PHE:CE1	1:E:136:ILE:HD13	2.54	0.42
1:E:344:TYR:CE2	1:E:346:GLN:HB2	2.54	0.42
1:B:366:ARG:HH22	1:C:349:ARG:HG2	1.84	0.42
1:B:411:ASP:OD1	1:C:344:TYR:OH	2.38	0.42
1:C:119:ILE:H	1:C:119:ILE:HG13	1.57	0.42
1:D:67:HIS:CE1	1:D:96:GLN:HB3	2.55	0.42
2:Z:148:TRP:CE2	2:Z:154:TYR:HD1	2.38	0.42
1:F:48:TRP:O	1:F:52:ALA:N	2.49	0.42
1:F:219:ALA:O	1:F:222:GLN:NE2	2.52	0.42
1:F:237:LYS:HB2	1:F:237:LYS:HE2	1.86	0.42
1:C:122:TYR:O	1:C:126:VAL:HG23	2.19	0.42
1:E:66:ARG:NH1	1:F:333:GLU:OE2	2.53	0.42
1:F:56:VAL:HG23	1:F:127:ARG:HH12	1.84	0.42
2:W:210:LEU:HD22	2:W:210:LEU:HA	1.93	0.42
1:A:125:ILE:O	1:A:129:ARG:HG2	2.18	0.42
1:B:48:TRP:CD1	1:B:76:GLN:HG2	2.55	0.42
1:F:41:LEU:HD11	1:F:51:VAL:HG11	2.00	0.42
2:Y:108:ALA:O	2:Y:112:GLU:HG3	2.20	0.42
1:A:231:ALA:HB2	1:A:418:ILE:HB	2.02	0.42
1:B:41:LEU:HD11	1:B:51:VAL:HG11	2.01	0.42
1:E:19:PRO:HB2	1:E:23:GLY:HA2	2.01	0.42
1:E:392:ARG:NH2	1:E:401:ASP:OD2	2.52	0.42
1:E:57:ALA:O	1:E:66:ARG:HG2	2.20	0.42
2:Y:155:TRP:O	2:Y:159:ASN:ND2	2.31	0.42
1:A:221:LEU:HD22	1:A:227:ILE:HD13	2.02	0.41
1:D:27:PRO:N	1:D:28:PRO:HD3	2.35	0.41
2:V:108:ALA:O	2:V:112:GLU:HG3	2.20	0.41

Continued on next page...

Continued from previous page...

Atom-1	Atom-2	Interatomic distance (Å)	Clash overlap (Å)
1:C:197:PHE:O	2:W:212:ARG:NH1	2.53	0.41
1:E:311:TYR:OH	1:E:334:HIS:NE2	2.49	0.41
1:F:45:ASN:ND2	1:F:82:ILE:H	2.18	0.41
1:E:29:HIS:HB2	1:E:61:TYR:CD2	2.55	0.41
1:E:263:MET:HE1	1:E:271:ARG:HD2	2.02	0.41
1:A:61:TYR:O	1:A:66:ARG:NH2	2.54	0.41
1:E:290:ASP:HA	2:X:210:LEU:HG	2.02	0.41
1:F:231:ALA:HB2	1:F:418:ILE:HB	2.03	0.41
1:B:315:SER:HB2	1:B:318:LEU:HD21	2.03	0.41
1:C:231:ALA:HB2	1:C:418:ILE:HB	2.02	0.41
1:D:396:ARG:HA	1:D:397:PRO:HD3	1.97	0.41
1:E:258:ILE:HG23	1:E:341:MET:SD	2.61	0.41
2:W:151:ASN:HD21	2:W:197:GLU:CD	2.29	0.41
1:A:343:ASP:HA	1:A:344:TYR:HA	1.76	0.41
1:A:344:TYR:CD2	1:A:346:GLN:HB2	2.55	0.41
1:C:384:GLN:HE21	1:C:384:GLN:HB2	1.57	0.41
1:A:41:LEU:HD11	1:A:51:VAL:HG11	2.03	0.41
1:B:166:PHE:CZ	1:C:329:ARG:HB2	2.56	0.41
1:C:258:ILE:HG23	1:C:341:MET:SD	2.61	0.41
1:D:140:ASN:CG	1:F:116:ALA:HB2	2.46	0.41
1:D:392:ARG:NH1	1:D:394:ASP:O	2.54	0.41
1:D:442:ARG:NH2	1:E:263:MET:SD	2.94	0.41
1:E:396:ARG:HA	1:E:397:PRO:HD3	1.95	0.41
1:F:281:GLN:OE1	1:F:458:SER:OG	2.39	0.41
2:V:223:LYS:NZ	2:V:232:SER:HB2	2.36	0.41
1:A:454:ASN:ND2	1:A:461:ASP:OD2	2.54	0.41
2:X:149:LYS:HB2	2:X:153:HIS:HD1	1.86	0.41
2:Y:55:LEU:HD13	2:Y:63:VAL:HG22	2.03	0.41
1:B:29:HIS:HB2	1:B:61:TYR:CE2	2.57	0.40
1:B:109:LEU:O	1:B:113:THR:OG1	2.25	0.40
1:F:344:TYR:CD2	1:F:346:GLN:HB2	2.56	0.40
2:V:146:TYR:HB3	2:V:148:TRP:CE2	2.56	0.40
2:Z:3:ASN:OD1	2:Z:4:ILE:N	2.54	0.40
2:Z:46:GLN:HB3	2:Z:89:MET:HE2	2.02	0.40
2:Z:129:MET:HE1	2:Z:153:HIS:CG	2.56	0.40
1:B:438:ILE:HG21	1:B:441:GLN:HB2	2.04	0.40
1:D:29:HIS:HB2	1:D:61:TYR:CD2	2.56	0.40
1:D:231:ALA:HB2	1:D:418:ILE:HB	2.02	0.40
2:Y:90:ARG:HG2	2:Y:93:ARG:HH21	1.85	0.40
1:A:212:ASP:N	1:A:212:ASP:OD1	2.54	0.40
1:B:442:ARG:HH22	1:C:262:GLU:CD	2.29	0.40

Continued on next page...

Continued from previous page...

Atom-1	Atom-2	Interatomic distance (Å)	Clash overlap (Å)
1:B:462:ASN:OD1	1:B:462:ASN:N	2.53	0.40
2:Z:203:PRO:HG2	2:Z:205:MET:SD	2.62	0.40
1:D:64:PRO:HB3	1:D:100:VAL:O	2.22	0.40
2:X:44:PHE:O	2:X:48:LEU:HG	2.22	0.40
2:X:131:TYR:OH	2:X:171:ASP:OD1	2.36	0.40
2:Z:146:TYR:HB3	2:Z:148:TRP:CE2	2.57	0.40
1:C:396:ARG:HA	1:C:397:PRO:HD3	1.97	0.40
1:E:231:ALA:HB2	1:E:418:ILE:HB	2.02	0.40

There are no symmetry-related clashes.

5.3 Torsion angles

5.3.1 Protein backbone

In the following table, the Percentiles column shows the percent Ramachandran outliers of the chain as a percentile score with respect to all PDB entries followed by that with respect to all EM entries.

The Analysed column shows the number of residues for which the backbone conformation was analysed, and the total number of residues.

Mol	Chain	Analysed	Favoured	Allowed	Outliers	Percentiles	
1	A	413/471 (88%)	410 (99%)	3 (1%)	0	100	100
1	B	451/471 (96%)	437 (97%)	14 (3%)	0	100	100
1	C	448/471 (95%)	434 (97%)	12 (3%)	2 (0%)	30	46
1	D	449/471 (95%)	440 (98%)	9 (2%)	0	100	100
1	E	448/471 (95%)	433 (97%)	15 (3%)	0	100	100
1	F	443/471 (94%)	434 (98%)	9 (2%)	0	100	100
2	V	191/233 (82%)	178 (93%)	12 (6%)	1 (0%)	25	40
2	W	191/233 (82%)	177 (93%)	13 (7%)	1 (0%)	25	40
2	X	191/233 (82%)	179 (94%)	10 (5%)	2 (1%)	13	21
2	Y	194/233 (83%)	181 (93%)	12 (6%)	1 (0%)	25	40
2	Z	228/233 (98%)	214 (94%)	13 (6%)	1 (0%)	30	46
All	All	3647/3991 (91%)	3517 (96%)	122 (3%)	8 (0%)	45	61

All (8) Ramachandran outliers are listed below:

Mol	Chain	Res	Type
1	C	128	GLU
2	V	198	PRO
2	W	198	PRO
2	X	198	PRO
2	Y	198	PRO
2	Z	198	PRO
1	C	127	ARG
2	X	202	LEU

5.3.2 Protein sidechains ⓘ

In the following table, the Percentiles column shows the percent sidechain outliers of the chain as a percentile score with respect to all PDB entries followed by that with respect to all EM entries.

The Analysed column shows the number of residues for which the sidechain conformation was analysed, and the total number of residues.

Mol	Chain	Analysed	Rotameric	Outliers	Percentiles	
1	A	353/398 (89%)	347 (98%)	6 (2%)	56	75
1	B	383/398 (96%)	378 (99%)	5 (1%)	65	80
1	C	380/398 (96%)	369 (97%)	11 (3%)	37	58
1	D	381/398 (96%)	373 (98%)	8 (2%)	48	70
1	E	380/398 (96%)	366 (96%)	14 (4%)	29	48
1	F	377/398 (95%)	366 (97%)	11 (3%)	37	58
2	V	158/194 (81%)	156 (99%)	2 (1%)	65	80
2	W	158/194 (81%)	157 (99%)	1 (1%)	84	92
2	X	158/194 (81%)	157 (99%)	1 (1%)	84	92
2	Y	160/194 (82%)	158 (99%)	2 (1%)	65	80
2	Z	191/194 (98%)	187 (98%)	4 (2%)	48	70
All	All	3079/3358 (92%)	3014 (98%)	65 (2%)	49	70

All (65) residues with a non-rotameric sidechain are listed below:

Mol	Chain	Res	Type
1	A	26	VAL
1	A	29	HIS
1	A	56	VAL
1	A	119	ILE

Continued on next page...

Continued from previous page...

Mol	Chain	Res	Type
1	A	237	LYS
1	A	441	GLN
1	B	18	ASP
1	B	24	LEU
1	B	61	TYR
1	B	119	ILE
1	B	174	ASN
1	C	56	VAL
1	C	61	TYR
1	C	63	ARG
1	C	119	ILE
1	C	135	MET
1	C	175	LYS
1	C	355	ASP
1	C	384	GLN
1	C	386	ASN
1	C	429	ASP
1	C	441	GLN
1	D	56	VAL
1	D	61	TYR
1	D	119	ILE
1	D	184	ASP
1	D	197	PHE
1	D	268	ILE
1	D	384	GLN
1	D	429	ASP
1	E	20	GLN
1	E	21	VAL
1	E	56	VAL
1	E	61	TYR
1	E	63	ARG
1	E	119	ILE
1	E	135	MET
1	E	138	VAL
1	E	168	ILE
1	E	176	ASP
1	E	197	PHE
1	E	237	LYS
1	E	384	GLN
1	E	427	ASN
1	F	24	LEU
1	F	61	TYR

Continued on next page...

Continued from previous page...

Mol	Chain	Res	Type
1	F	63	ARG
1	F	119	ILE
1	F	128	GLU
1	F	138	VAL
1	F	197	PHE
1	F	268	ILE
1	F	355	ASP
1	F	384	GLN
1	F	429	ASP
2	V	193	GLU
2	V	210	LEU
2	W	210	LEU
2	X	228	LEU
2	Y	210	LEU
2	Y	229	LYS
2	Z	137	ARG
2	Z	159	ASN
2	Z	210	LEU
2	Z	228	LEU

Sometimes sidechains can be flipped to improve hydrogen bonding and reduce clashes. All (18) such sidechains are listed below:

Mol	Chain	Res	Type
1	A	222	GLN
1	A	425	HIS
1	A	441	GLN
1	A	454	ASN
1	B	454	ASN
1	C	384	GLN
1	C	454	ASN
1	E	222	GLN
1	F	174	ASN
1	F	454	ASN
2	V	151	ASN
2	V	159	ASN
2	X	167	ASN
2	Y	96	ASN
2	Y	105	GLN
2	Y	167	ASN
2	Z	96	ASN
2	Z	167	ASN

5.3.3 RNA ⓘ

There are no RNA molecules in this entry.

5.4 Non-standard residues in protein, DNA, RNA chains ⓘ

There are no non-standard protein/DNA/RNA residues in this entry.

5.5 Carbohydrates ⓘ

There are no oligosaccharides in this entry.

5.6 Ligand geometry ⓘ

Of 12 ligands modelled in this entry, 6 are monoatomic - leaving 6 for Mogul analysis.

In the following table, the Counts columns list the number of bonds (or angles) for which Mogul statistics could be retrieved, the number of bonds (or angles) that are observed in the model and the number of bonds (or angles) that are defined in the Chemical Component Dictionary. The Link column lists molecule types, if any, to which the group is linked. The Z score for a bond length (or angle) is the number of standard deviations the observed value is removed from the expected value. A bond length (or angle) with $|Z| > 2$ is considered an outlier worth inspection. RMSZ is the root-mean-square of all Z scores of the bond lengths (or angles).

Mol	Type	Chain	Res	Link	Bond lengths			Bond angles		
					Counts	RMSZ	# Z > 2	Counts	RMSZ	# Z > 2
3	ADP	D	500	4	24,29,29	0.91	0	29,45,45	1.24	3 (10%)
3	ADP	B	500	-	24,29,29	0.97	1 (4%)	29,45,45	1.19	2 (6%)
3	ADP	C	500	4	24,29,29	0.91	0	29,45,45	1.20	2 (6%)
3	ADP	F	500	4	24,29,29	0.90	0	29,45,45	1.23	3 (10%)
3	ADP	A	500	4	24,29,29	0.90	0	29,45,45	1.19	2 (6%)
3	ADP	E	500	4	24,29,29	0.90	0	29,45,45	1.19	2 (6%)

In the following table, the Chirals column lists the number of chiral outliers, the number of chiral centers analysed, the number of these observed in the model and the number defined in the Chemical Component Dictionary. Similar counts are reported in the Torsion and Rings columns. '-' means no outliers of that kind were identified.

Mol	Type	Chain	Res	Link	Chirals	Torsions	Rings
3	ADP	D	500	4	-	7/12/32/32	0/3/3/3
3	ADP	B	500	-	-	2/12/32/32	0/3/3/3

Continued on next page...

Continued from previous page...

Mol	Type	Chain	Res	Link	Chirals	Torsions	Rings
3	ADP	C	500	4	-	6/12/32/32	0/3/3/3
3	ADP	F	500	4	-	6/12/32/32	0/3/3/3
3	ADP	A	500	4	-	6/12/32/32	0/3/3/3
3	ADP	E	500	4	-	6/12/32/32	0/3/3/3

All (1) bond length outliers are listed below:

Mol	Chain	Res	Type	Atoms	Z	Observed(Å)	Ideal(Å)
3	B	500	ADP	PA-O3A	2.46	1.62	1.59

All (14) bond angle outliers are listed below:

Mol	Chain	Res	Type	Atoms	Z	Observed(°)	Ideal(°)
3	D	500	ADP	N3-C2-N1	-3.69	123.66	128.67
3	B	500	ADP	N3-C2-N1	-3.68	123.68	128.67
3	C	500	ADP	N3-C2-N1	-3.67	123.69	128.67
3	F	500	ADP	N3-C2-N1	-3.66	123.70	128.67
3	A	500	ADP	N3-C2-N1	-3.64	123.73	128.67
3	E	500	ADP	N3-C2-N1	-3.63	123.74	128.67
3	A	500	ADP	C4-C5-N7	-2.68	106.51	109.34
3	F	500	ADP	C4-C5-N7	-2.67	106.52	109.34
3	E	500	ADP	C4-C5-N7	-2.64	106.55	109.34
3	D	500	ADP	C4-C5-N7	-2.63	106.56	109.34
3	B	500	ADP	C4-C5-N7	-2.59	106.60	109.34
3	C	500	ADP	C4-C5-N7	-2.58	106.61	109.34
3	F	500	ADP	O4'-C1'-N9	2.20	111.66	108.75
3	D	500	ADP	O4'-C1'-N9	2.05	111.46	108.75

There are no chirality outliers.

All (33) torsion outliers are listed below:

Mol	Chain	Res	Type	Atoms
3	A	500	ADP	C5'-O5'-PA-O1A
3	A	500	ADP	C5'-O5'-PA-O2A
3	A	500	ADP	C5'-O5'-PA-O3A
3	C	500	ADP	C5'-O5'-PA-O1A
3	C	500	ADP	C5'-O5'-PA-O2A
3	C	500	ADP	C5'-O5'-PA-O3A
3	D	500	ADP	C5'-O5'-PA-O2A
3	E	500	ADP	C5'-O5'-PA-O1A

Continued on next page...

Continued from previous page...

Mol	Chain	Res	Type	Atoms
3	E	500	ADP	C5'-O5'-PA-O2A
3	F	500	ADP	C5'-O5'-PA-O2A
3	F	500	ADP	C5'-O5'-PA-O3A
3	C	500	ADP	O4'-C4'-C5'-O5'
3	C	500	ADP	C3'-C4'-C5'-O5'
3	D	500	ADP	C3'-C4'-C5'-O5'
3	B	500	ADP	PB-O3A-PA-O1A
3	E	500	ADP	C3'-C4'-C5'-O5'
3	C	500	ADP	PA-O3A-PB-O2B
3	D	500	ADP	O4'-C4'-C5'-O5'
3	E	500	ADP	O4'-C4'-C5'-O5'
3	D	500	ADP	C5'-O5'-PA-O1A
3	D	500	ADP	C5'-O5'-PA-O3A
3	E	500	ADP	C5'-O5'-PA-O3A
3	F	500	ADP	C5'-O5'-PA-O1A
3	A	500	ADP	PB-O3A-PA-O2A
3	B	500	ADP	PB-O3A-PA-O2A
3	E	500	ADP	PB-O3A-PA-O2A
3	F	500	ADP	PB-O3A-PA-O2A
3	D	500	ADP	PA-O3A-PB-O1B
3	A	500	ADP	C3'-C4'-C5'-O5'
3	D	500	ADP	PA-O3A-PB-O3B
3	A	500	ADP	O4'-C4'-C5'-O5'
3	F	500	ADP	PB-O3A-PA-O1A
3	F	500	ADP	C3'-C4'-C5'-O5'

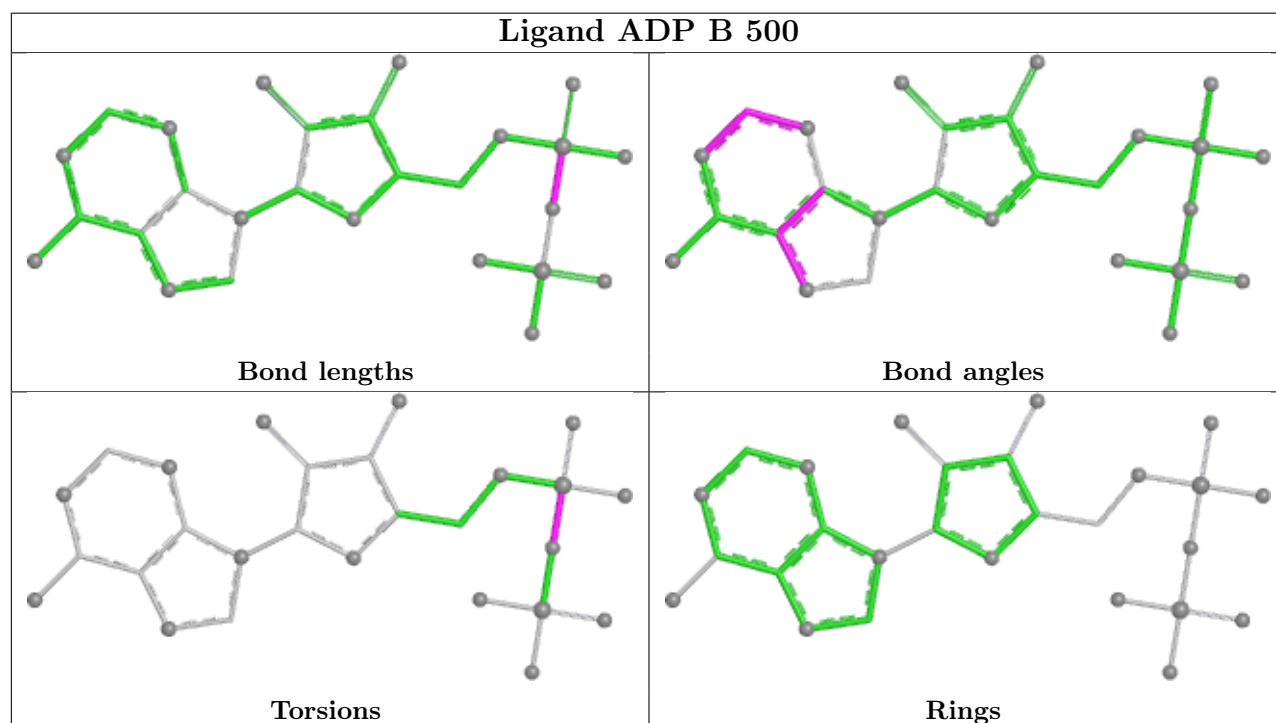
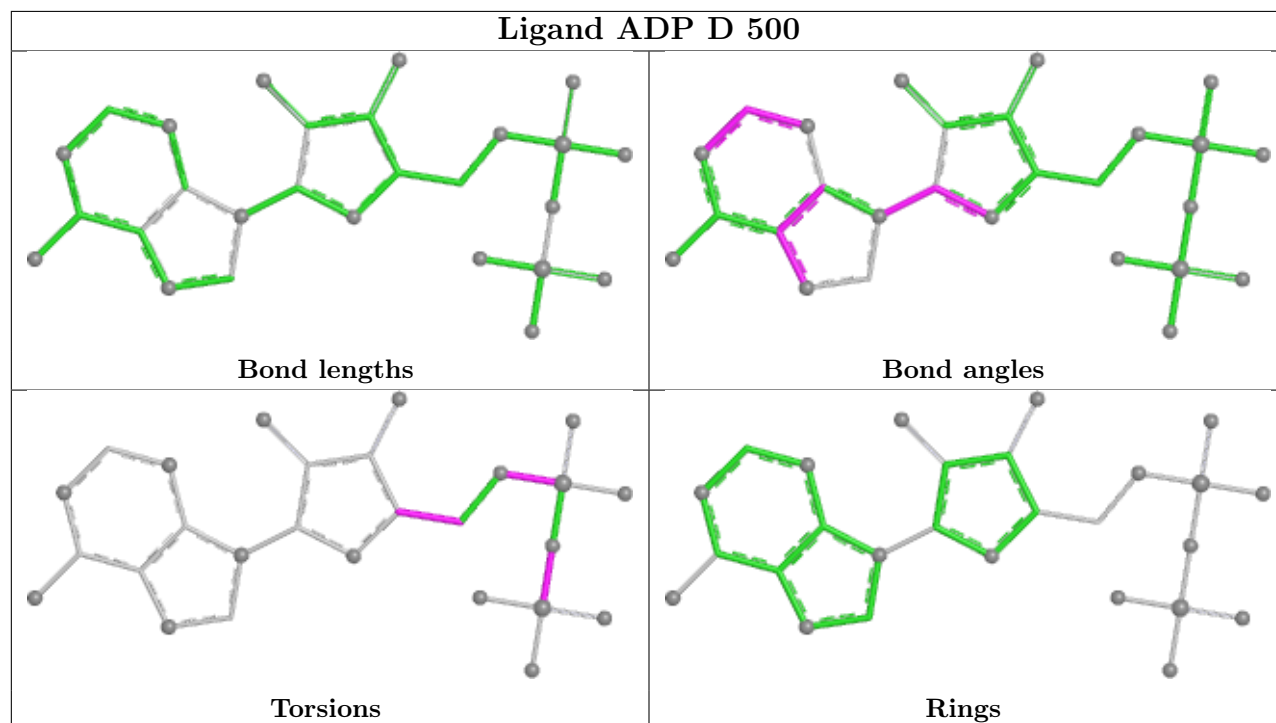
There are no ring outliers.

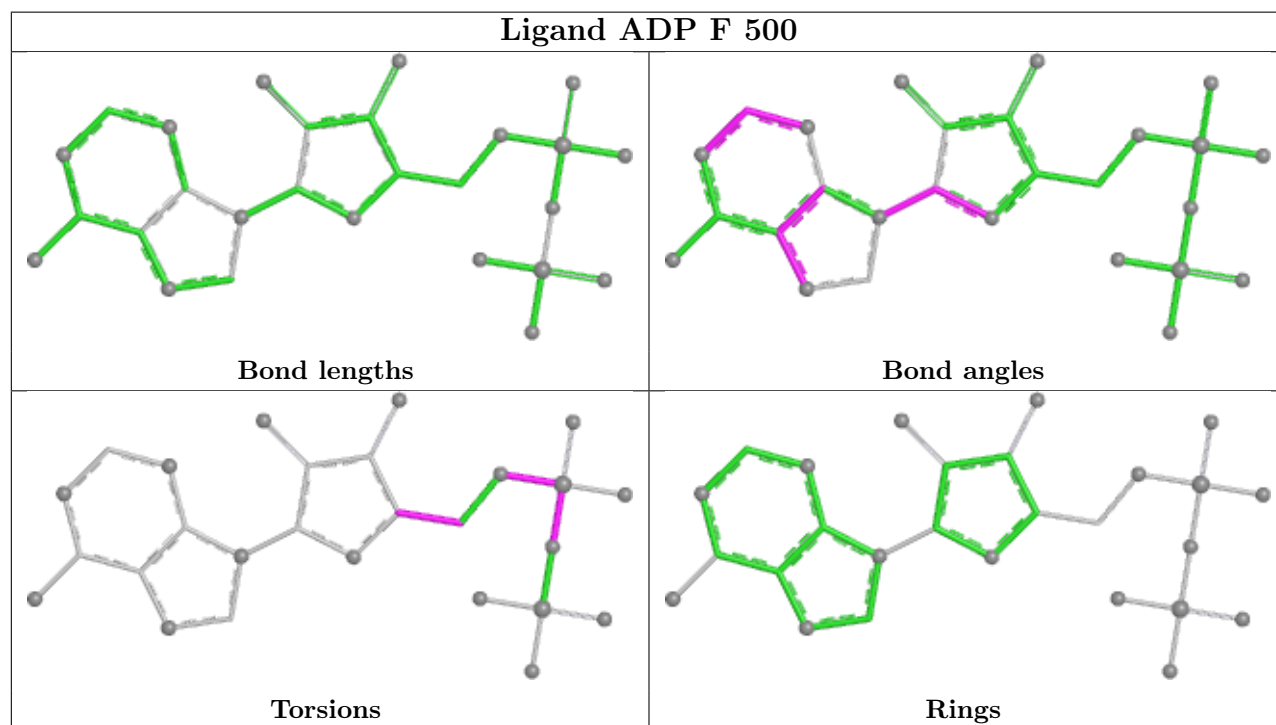
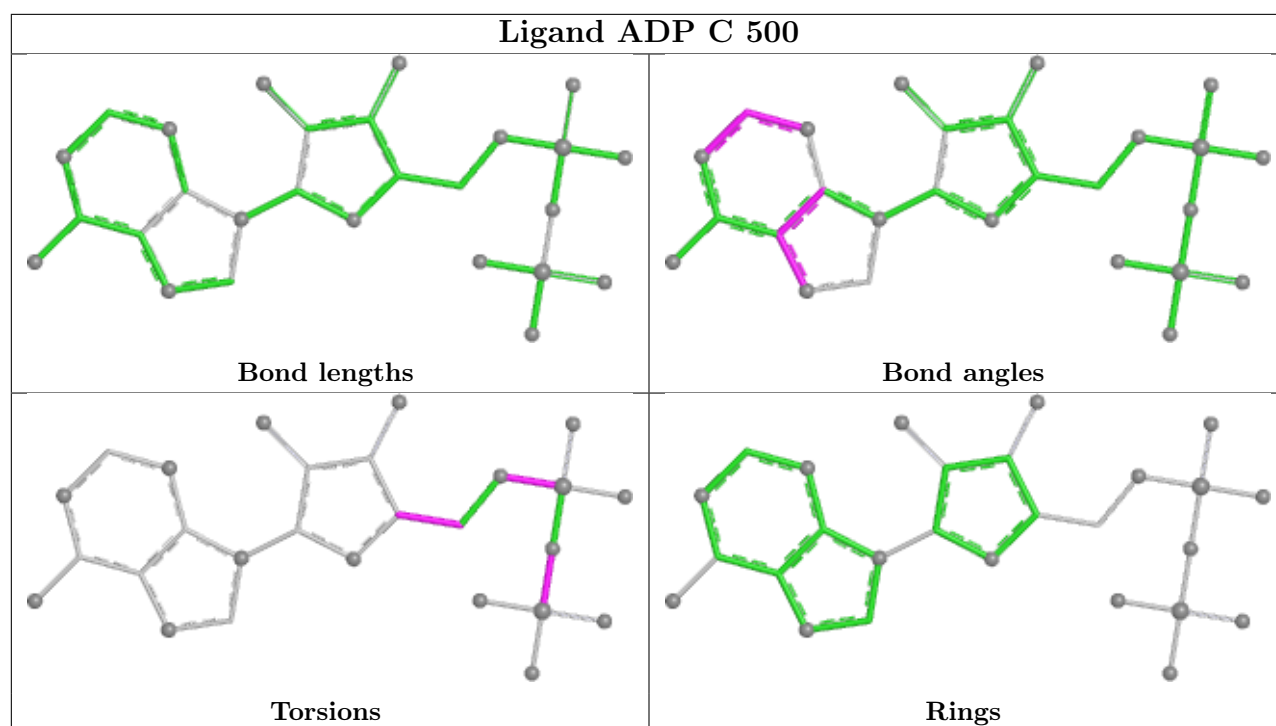
2 monomers are involved in 2 short contacts:

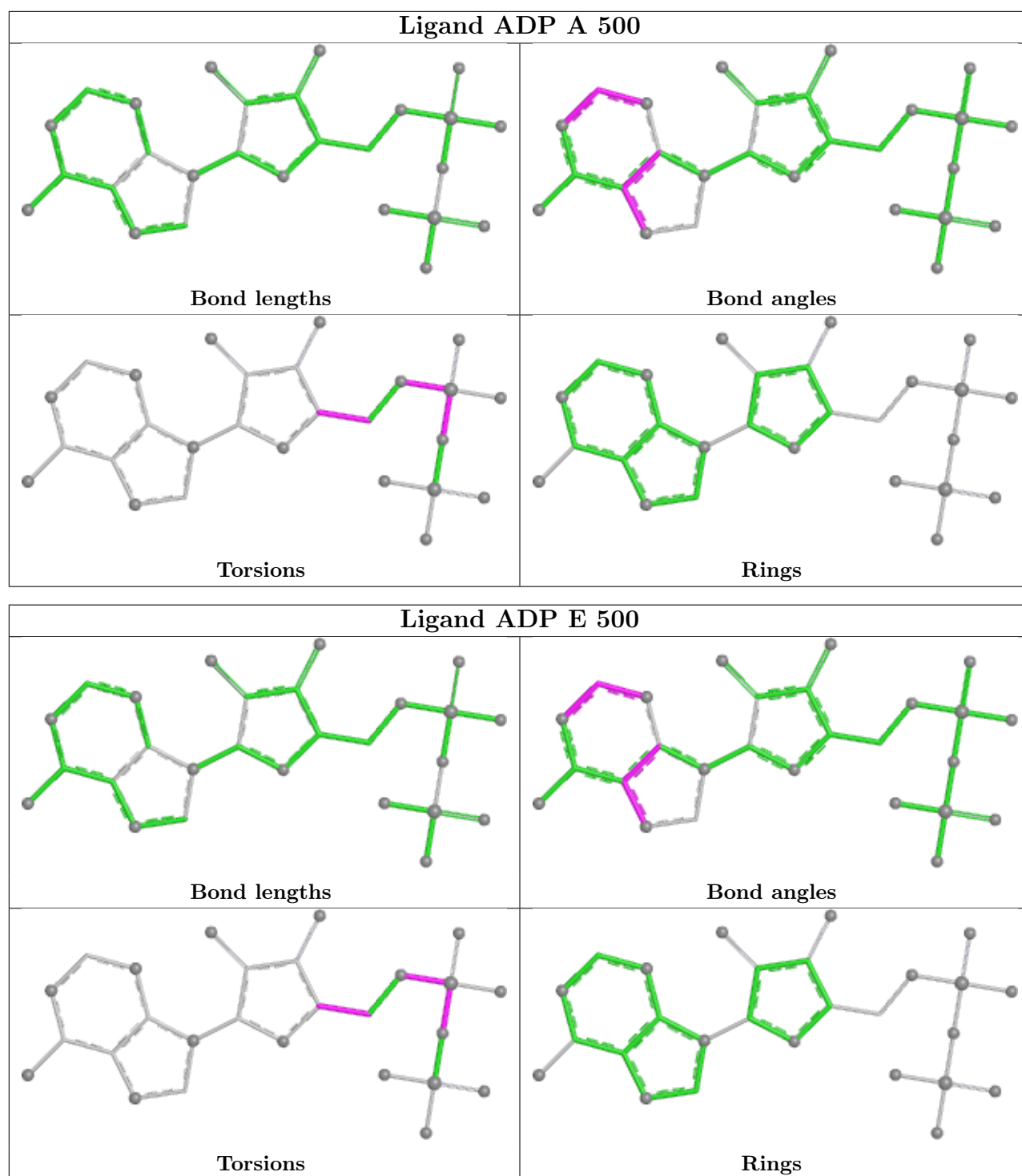
Mol	Chain	Res	Type	Clashes	Symm-Clashes
3	B	500	ADP	1	0
3	A	500	ADP	1	0

The following is a two-dimensional graphical depiction of Mogul quality analysis of bond lengths, bond angles, torsion angles, and ring geometry for all instances of the Ligand of Interest. In addition, ligands with molecular weight > 250 and outliers as shown on the validation Tables will also be included. For torsion angles, if less than 5% of the Mogul distribution of torsion angles is within 10 degrees of the torsion angle in question, then that torsion angle is considered an outlier. Any bond that is central to one or more torsion angles identified as an outlier by Mogul will be highlighted in the graph. For rings, the root-mean-square deviation (RMSD) between the ring in question and similar rings identified by Mogul is calculated over all ring torsion angles. If the average RMSD is greater than 60 degrees and the minimal RMSD between the ring in question and

any Mogul-identified rings is also greater than 60 degrees, then that ring is considered an outlier. The outliers are highlighted in purple. The color gray indicates Mogul did not find sufficient equivalents in the CSD to analyse the geometry.







5.7 Other polymers ⓘ

There are no such residues in this entry.

5.8 Polymer linkage issues ⓘ

There are no chain breaks in this entry.

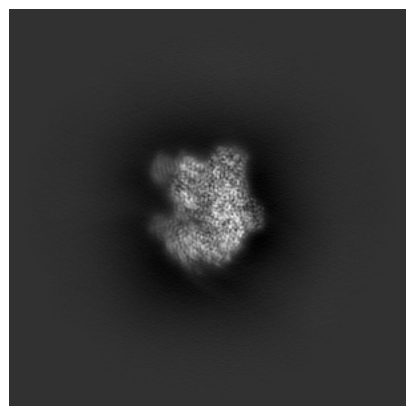
6 Map visualisation [i](#)

This section contains visualisations of the EMDB entry EMD-70269. These allow visual inspection of the internal detail of the map and identification of artifacts.

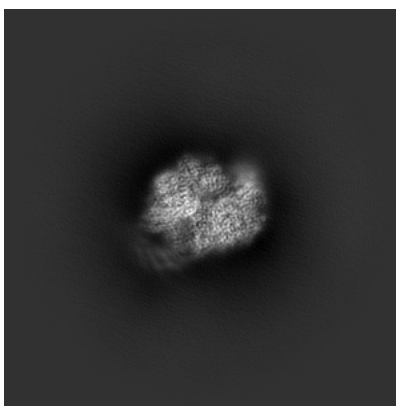
Images derived from a raw map, generated by summing the deposited half-maps, are presented below the corresponding image components of the primary map to allow further visual inspection and comparison with those of the primary map.

6.1 Orthogonal projections [i](#)

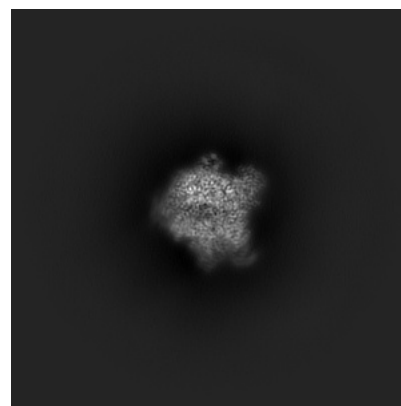
6.1.1 Primary map



X

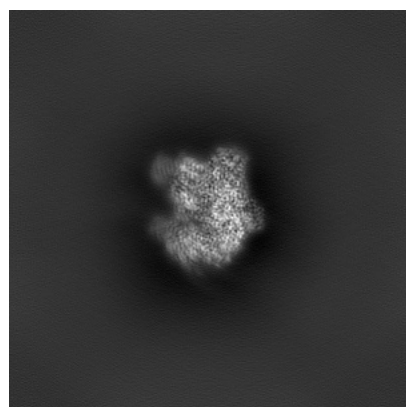


Y

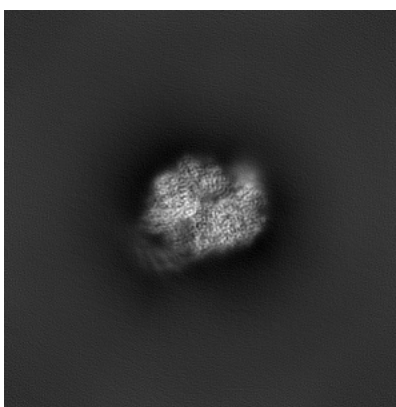


Z

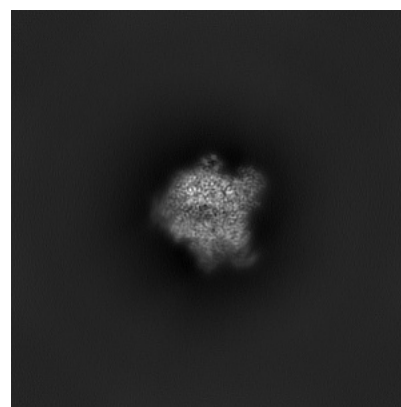
6.1.2 Raw map



X



Y

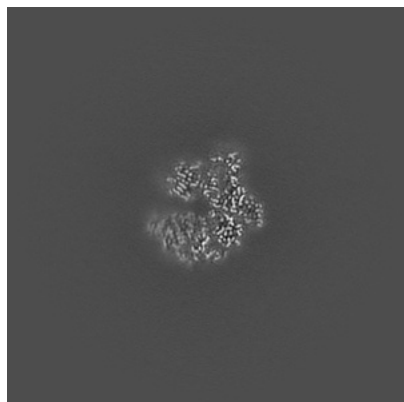


Z

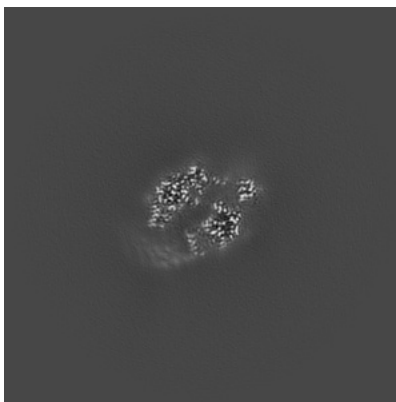
The images above show the map projected in three orthogonal directions.

6.2 Central slices [i](#)

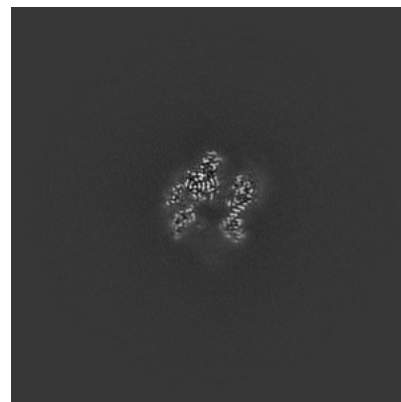
6.2.1 Primary map



X Index: 200

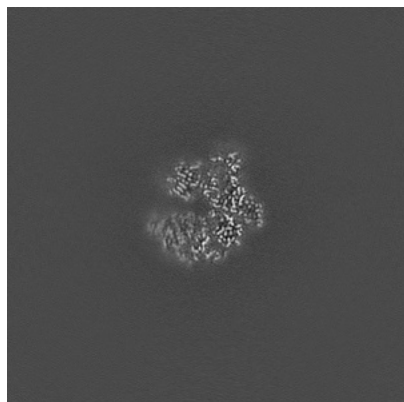


Y Index: 200

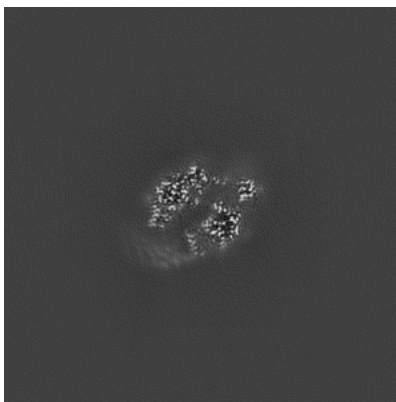


Z Index: 200

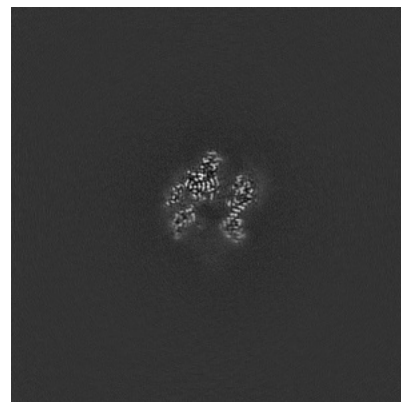
6.2.2 Raw map



X Index: 200



Y Index: 200

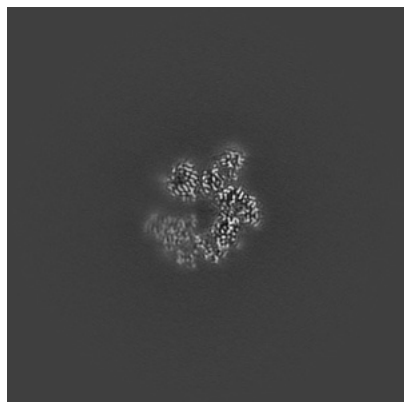


Z Index: 200

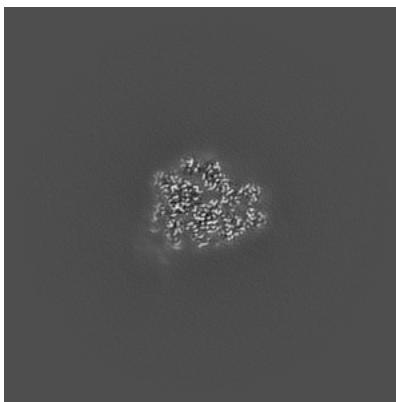
The images above show central slices of the map in three orthogonal directions.

6.3 Largest variance slices [i](#)

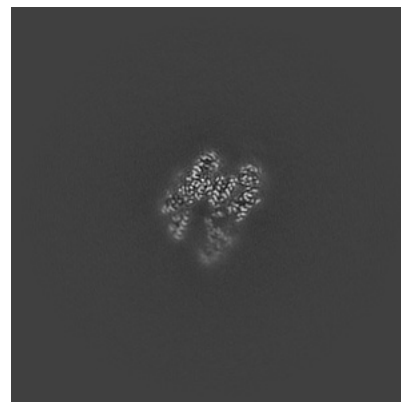
6.3.1 Primary map



X Index: 195

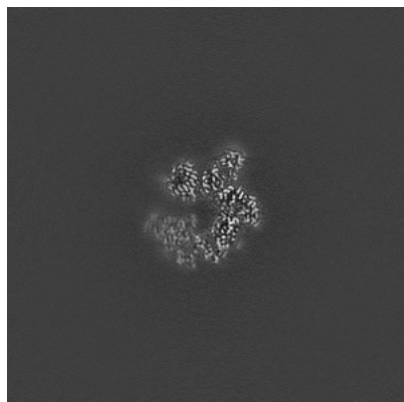


Y Index: 218

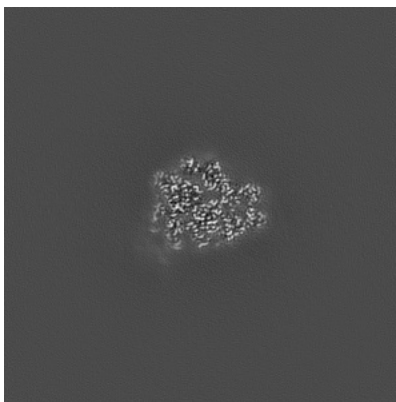


Z Index: 191

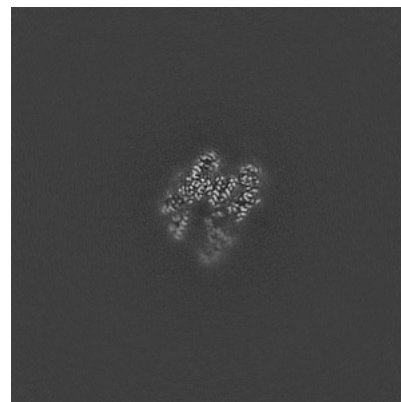
6.3.2 Raw map



X Index: 195



Y Index: 218

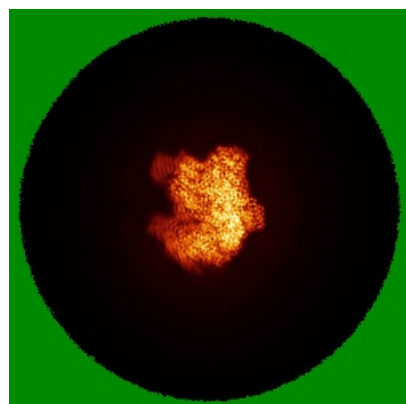


Z Index: 191

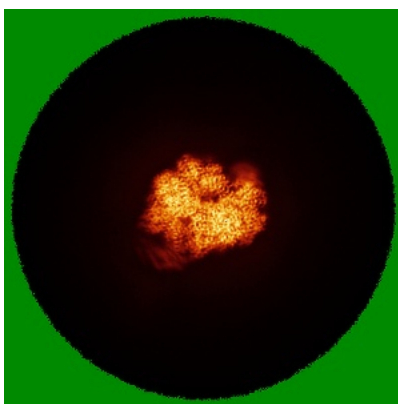
The images above show the largest variance slices of the map in three orthogonal directions.

6.4 Orthogonal standard-deviation projections (False-color) ⓘ

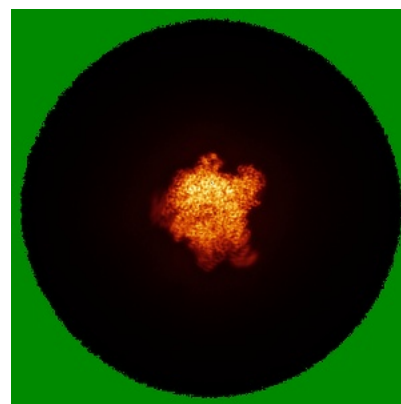
6.4.1 Primary map



X

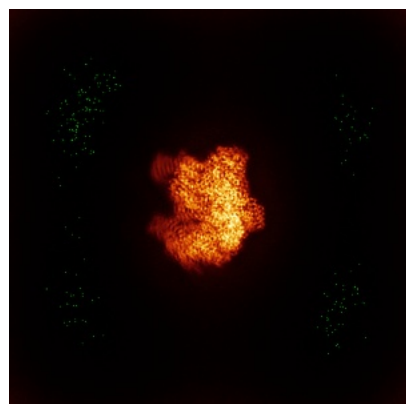


Y

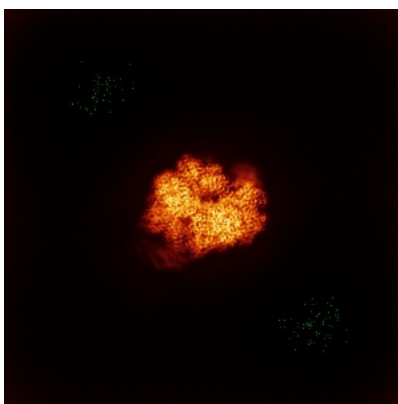


Z

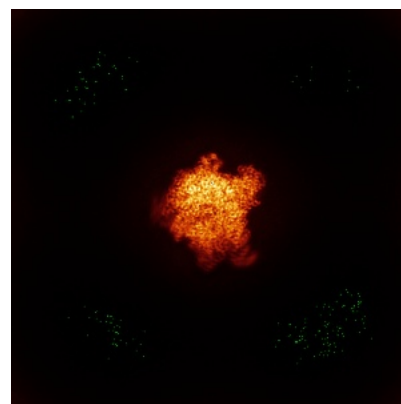
6.4.2 Raw map



X



Y

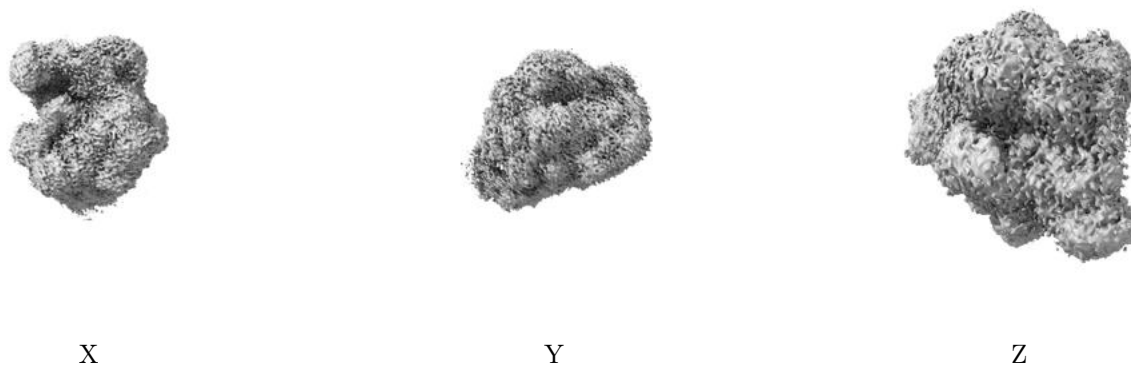


Z

The images above show the map standard deviation projections with false color in three orthogonal directions. Minimum values are shown in green, max in blue, and dark to light orange shades represent small to large values respectively.

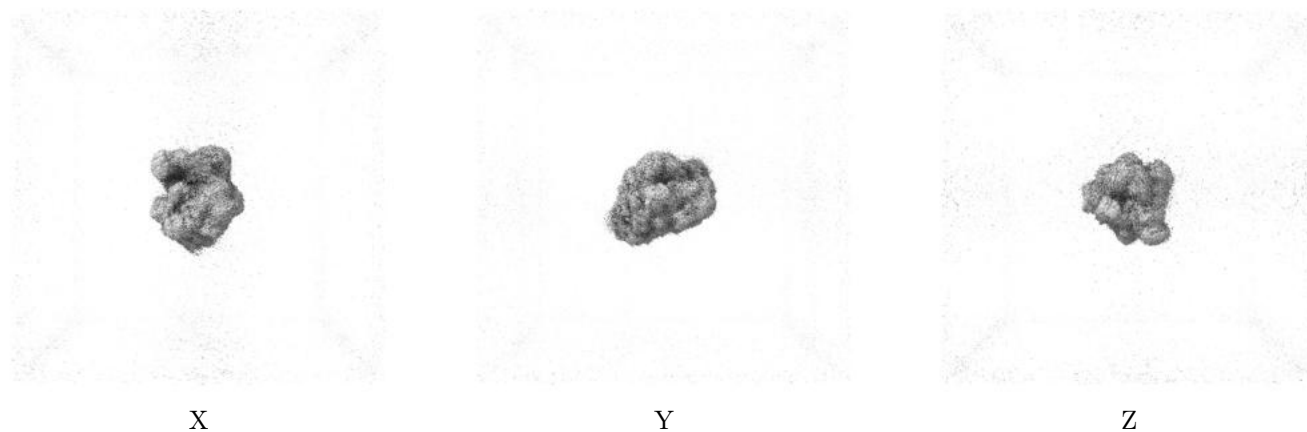
6.5 Orthogonal surface views [i](#)

6.5.1 Primary map



The images above show the 3D surface view of the map at the recommended contour level 0.0348. These images, in conjunction with the slice images, may facilitate assessment of whether an appropriate contour level has been provided.

6.5.2 Raw map



These images show the 3D surface of the raw map. The raw map's contour level was selected so that its surface encloses the same volume as the primary map does at its recommended contour level.

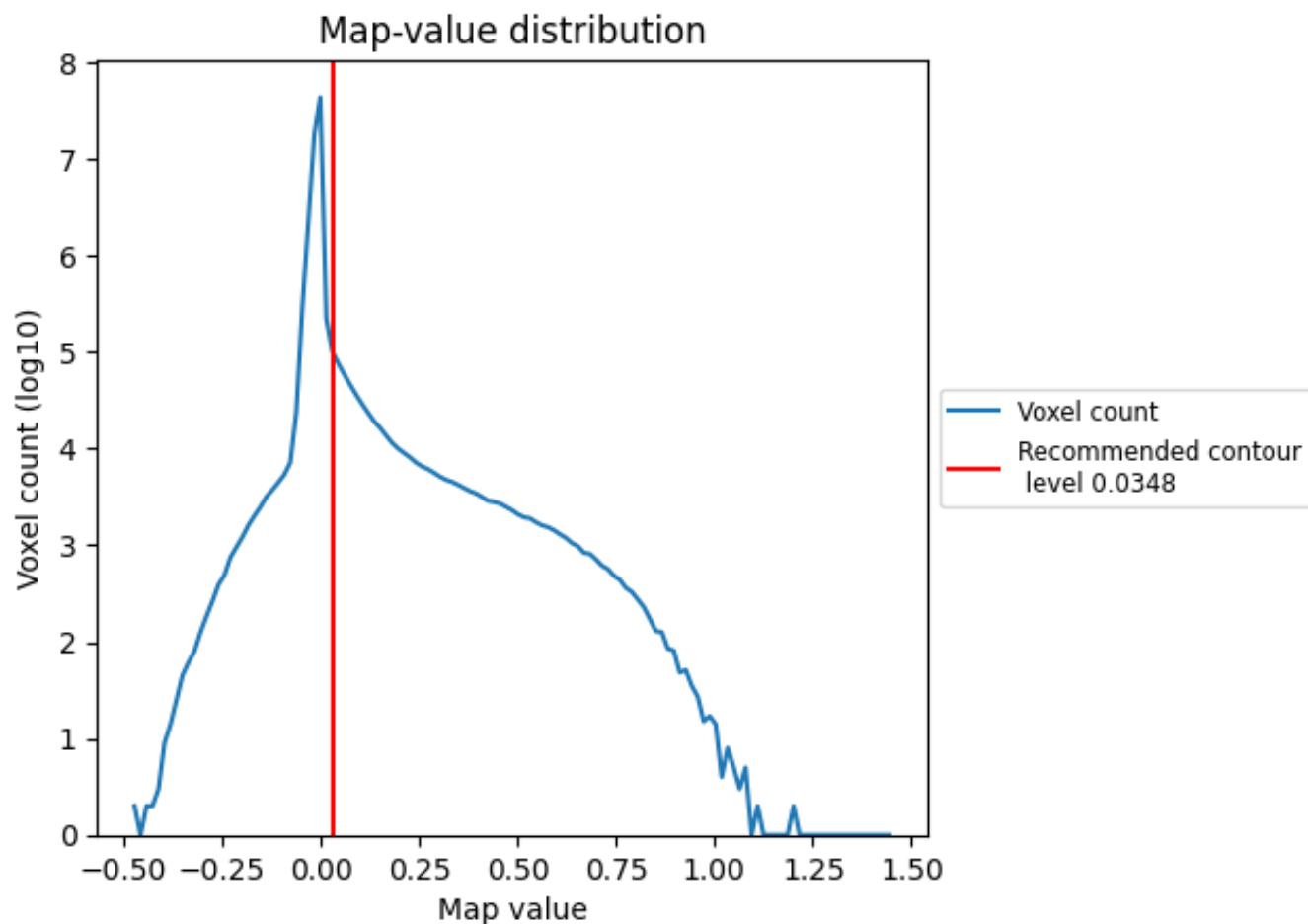
6.6 Mask visualisation [i](#)

This section was not generated. No masks/segmentation were deposited.

7 Map analysis [i](#)

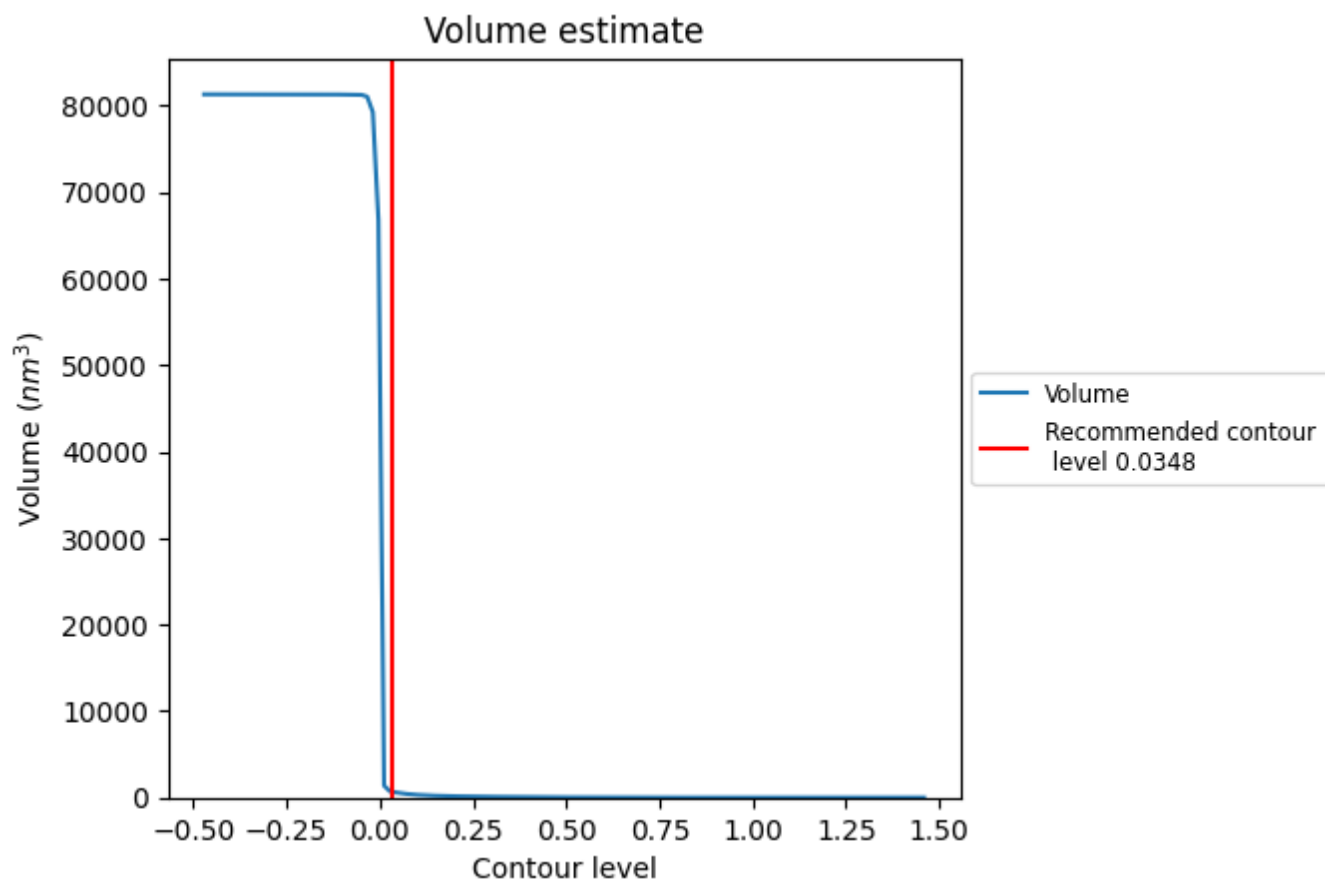
This section contains the results of statistical analysis of the map.

7.1 Map-value distribution [i](#)



The map-value distribution is plotted in 128 intervals along the x-axis. The y-axis is logarithmic. A spike in this graph at zero usually indicates that the volume has been masked.

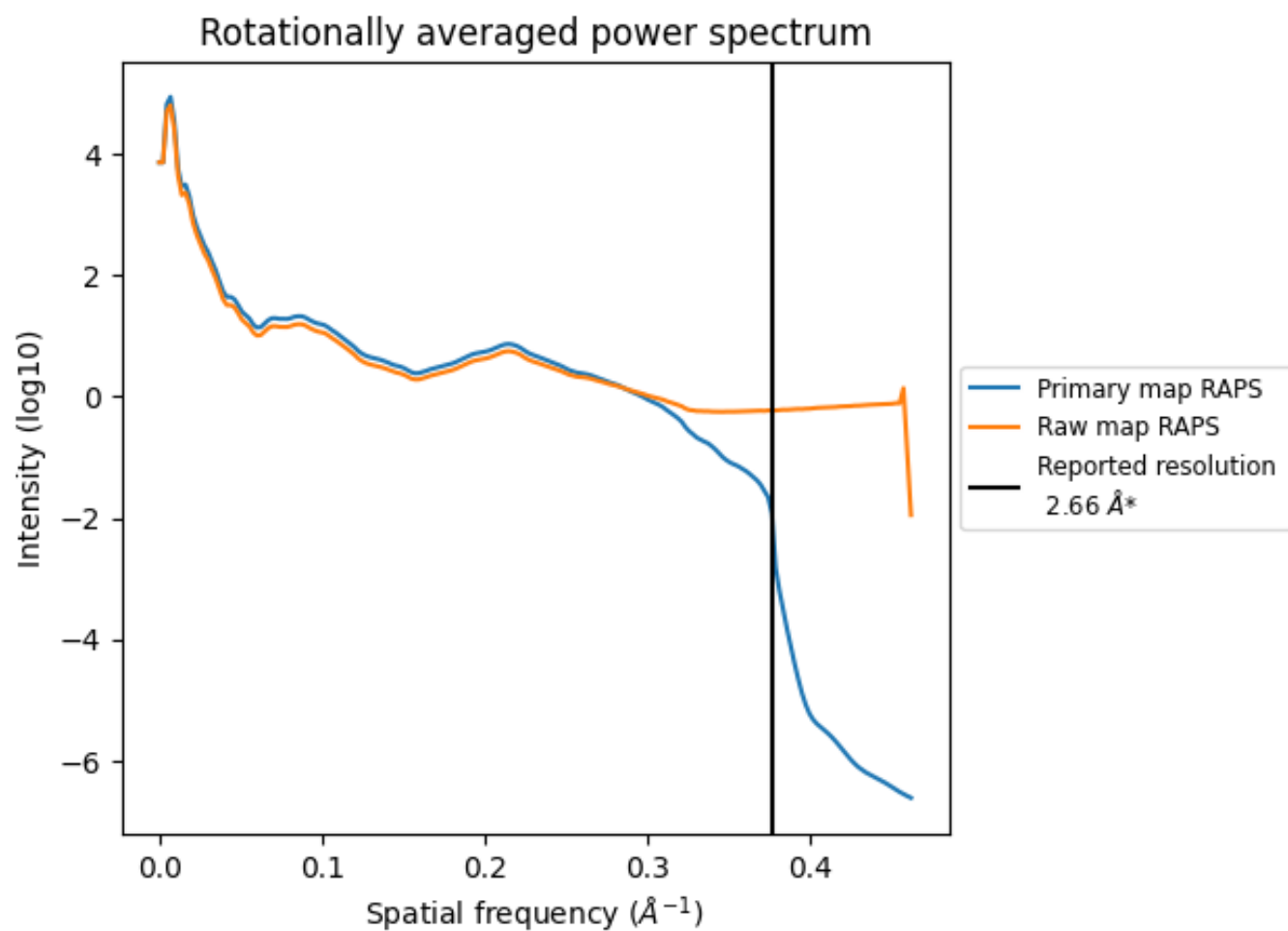
7.2 Volume estimate [i](#)



The volume at the recommended contour level is 664 nm^3 ; this corresponds to an approximate mass of 600 kDa.

The volume estimate graph shows how the enclosed volume varies with the contour level. The recommended contour level is shown as a vertical line and the intersection between the line and the curve gives the volume of the enclosed surface at the given level.

7.3 Rotationally averaged power spectrum ⓘ

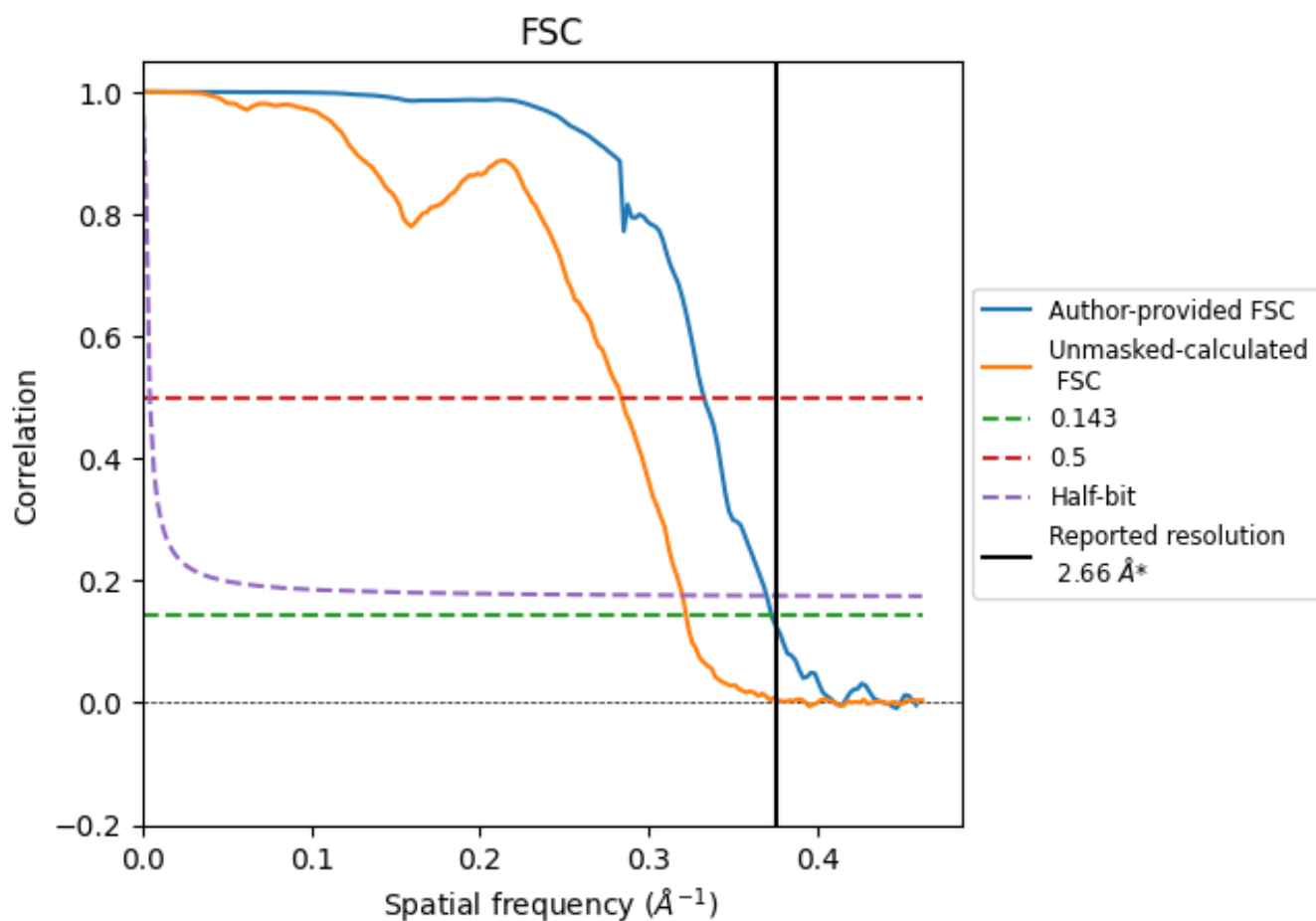


*Reported resolution corresponds to spatial frequency of 0.376 Å⁻¹

8 Fourier-Shell correlation [i](#)

Fourier-Shell Correlation (FSC) is the most commonly used method to estimate the resolution of single-particle and subtomogram-averaged maps. The shape of the curve depends on the imposed symmetry, mask and whether or not the two 3D reconstructions used were processed from a common reference. The reported resolution is shown as a black line. A curve is displayed for the half-bit criterion in addition to lines showing the 0.143 gold standard cut-off and 0.5 cut-off.

8.1 FSC [i](#)



*Reported resolution corresponds to spatial frequency of 0.376 \AA^{-1}

8.2 Resolution estimates [i](#)

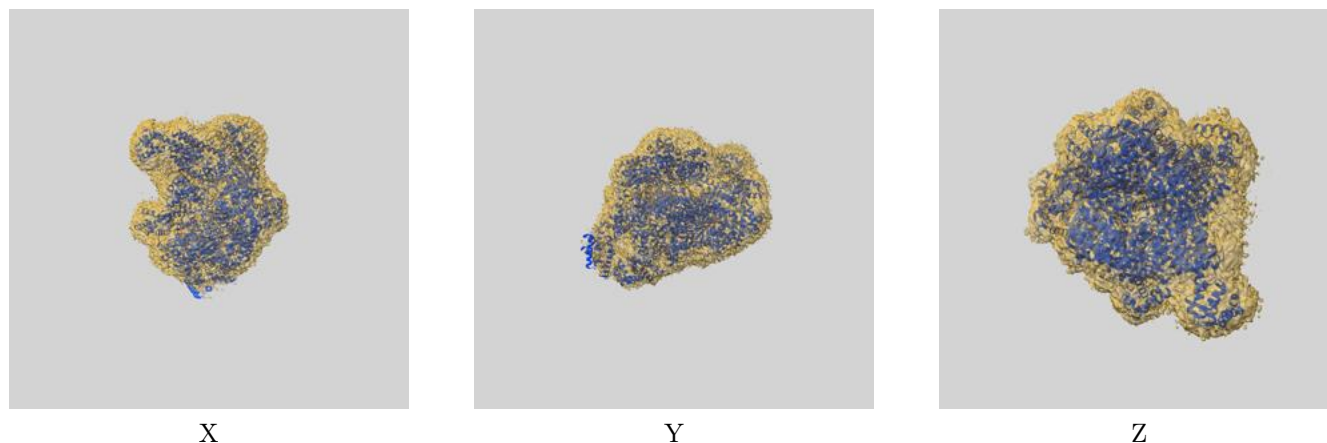
Resolution estimate (Å)	Estimation criterion (FSC cut-off)		
	0.143	0.5	Half-bit
Reported by author	2.66	-	-
Author-provided FSC curve	2.68	3.01	2.71
Unmasked-calculated*	3.11	3.53	3.13

*Resolution estimate based on FSC curve calculated by comparison of deposited half-maps. The value from deposited half-maps intersecting FSC 0.143 CUT-OFF 3.11 differs from the reported value 2.66 by more than 10 %

9 Map-model fit [i](#)

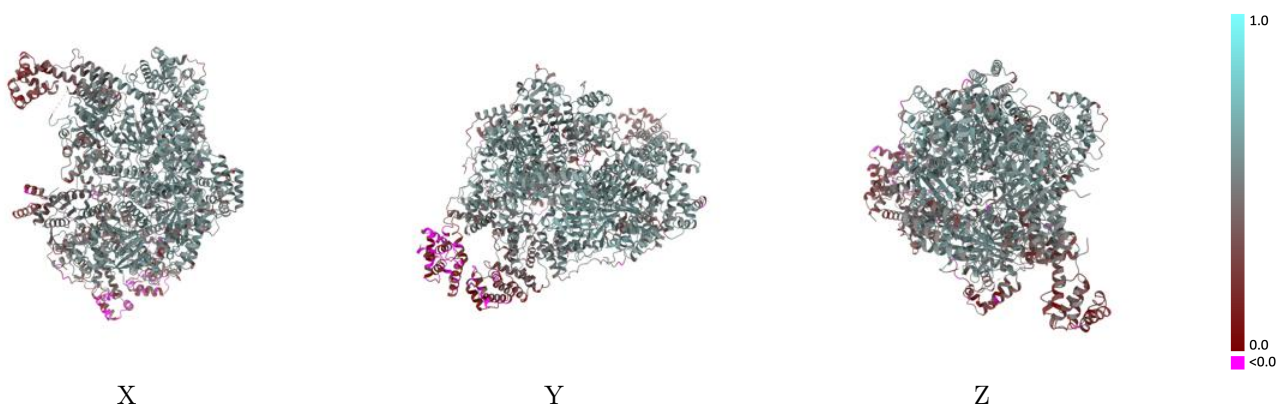
This section contains information regarding the fit between EMDB map EMD-70269 and PDB model 9OA1. Per-residue inclusion information can be found in [section 3](#) on [page 7](#).

9.1 Map-model overlay [i](#)



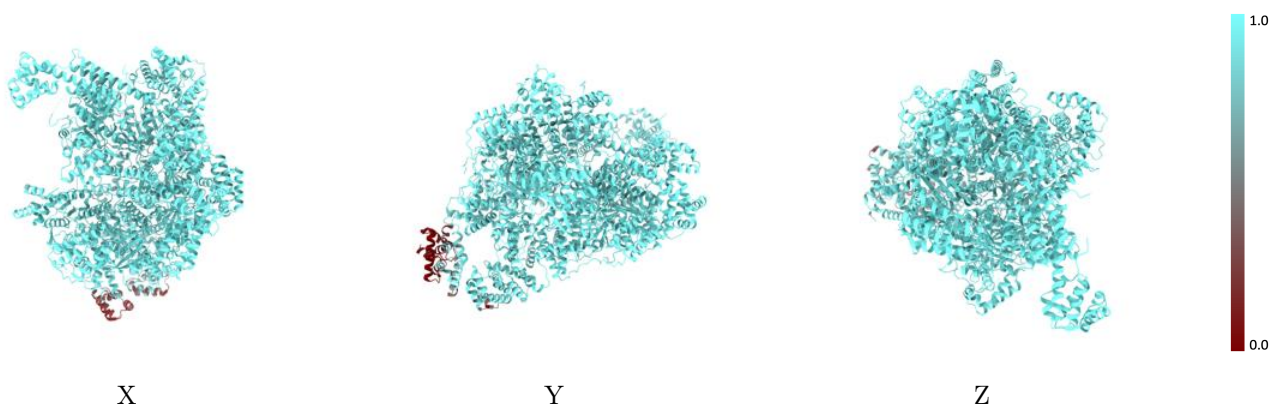
The images above show the 3D surface view of the map at the recommended contour level 0.0348 at 50% transparency in yellow overlaid with a ribbon representation of the model coloured in blue. These images allow for the visual assessment of the quality of fit between the atomic model and the map.

9.2 Q-score mapped to coordinate model [i](#)



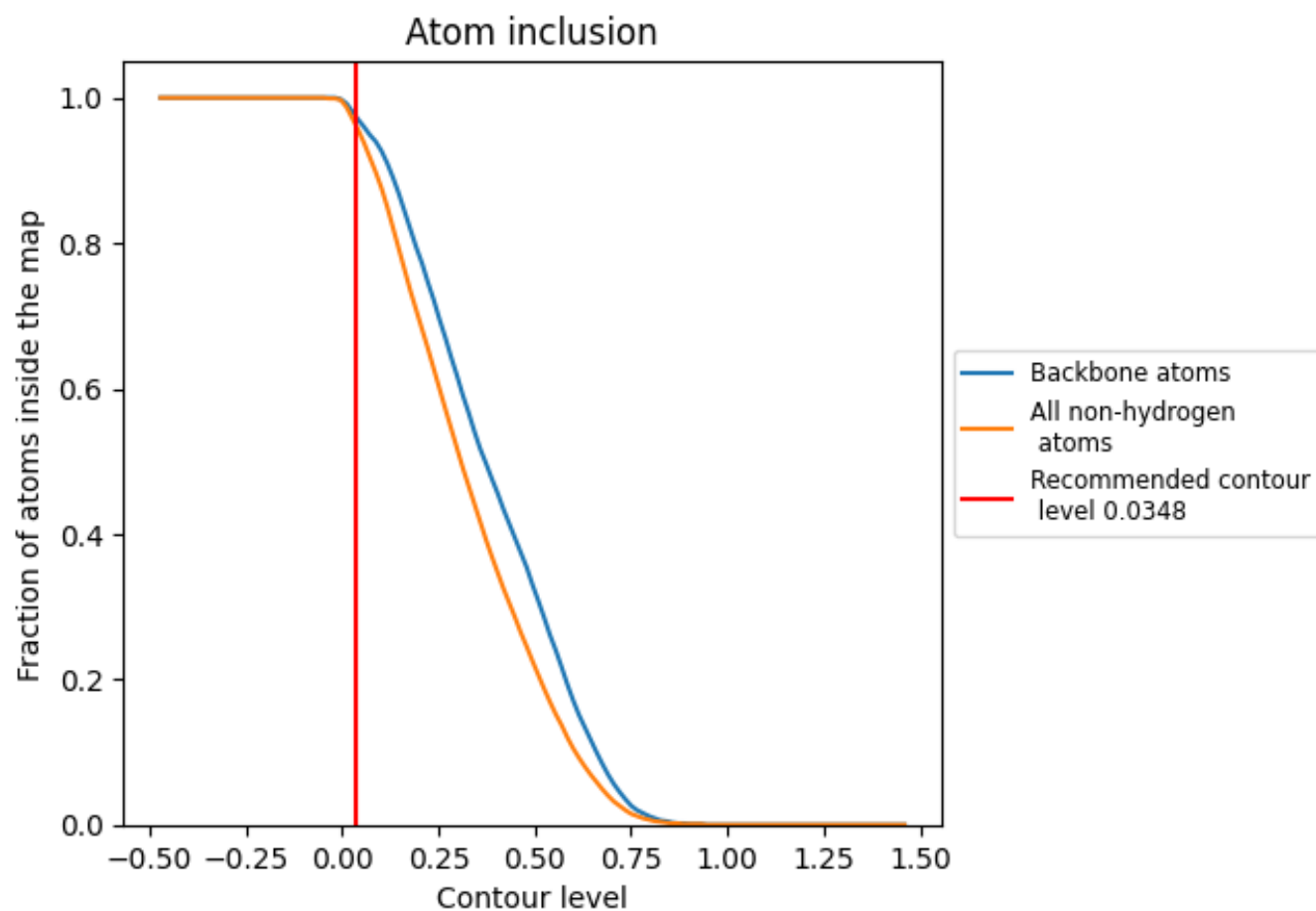
The images above show the model with each residue coloured according to its Q-score. This shows their resolvability in the map with higher Q-score values reflecting better resolvability. Please note: Q-score is calculating the resolvability of atoms, and thus high values are only expected at resolutions at which atoms can be resolved. Low Q-score values may therefore be expected for many entries.

9.3 Atom inclusion mapped to coordinate model [i](#)



The images above show the model with each residue coloured according to its atom inclusion. This shows to what extent they are inside the map at the recommended contour level (0.0348).























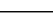
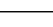
9.4 Atom inclusion [i](#)



At the recommended contour level, 98% of all backbone atoms, 96% of all non-hydrogen atoms, are inside the map.

9.5 Map-model fit summary

The table lists the average atom inclusion at the recommended contour level (0.0348) and Q-score for the entire model and for each chain.

Chain	Atom inclusion	Q-score
All	 0.9630	 0.4760
A	 0.9970	 0.4620
B	 0.9910	 0.4570
C	 0.9920	 0.5430
D	 0.9920	 0.5530
E	 0.9930	 0.5530
F	 0.9930	 0.5510
V	 0.6140	 0.2660
W	 0.8590	 0.3430
X	 0.9570	 0.3620
Y	 0.9870	 0.4130
Z	 0.9800	 0.4010

