



wwPDB X-ray Structure Validation Summary Report ⓘ

Nov 18, 2024 – 01:09 AM EST

PDB ID : 4NP3
Title : Crystal structure of the murine cd44 hyaluronan binding domain complex with a small molecule
Authors : Liu, L.K.; Finzel, B.
Deposited on : 2013-11-20
Resolution : 1.61 Å(reported)

This is a wwPDB X-ray Structure Validation Summary Report for a publicly released PDB entry.

We welcome your comments at validation@mail.wwpdb.org

A user guide is available at

<https://www.wwpdb.org/validation/2017/XrayValidationReportHelp>

with specific help available everywhere you see the ⓘ symbol.

The types of validation reports are described at

<http://www.wwpdb.org/validation/2017/FAQs#types>.

The following versions of software and data (see [references ⓘ](#)) were used in the production of this report:

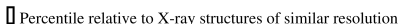
MolProbity	:	4.02b-467
Mogul	:	2022.3.0, CSD as543be (2022)
Xtriage (Phenix)	:	1.20.1
EDS	:	3.0
Percentile statistics	:	20231227.v01 (using entries in the PDB archive December 27th 2023)
CCP4	:	9.0.003 (Gargrove)
Density-Fitness	:	1.0.11
Ideal geometry (proteins)	:	Engh & Huber (2001)
Ideal geometry (DNA, RNA)	:	Parkinson et al. (1996)
Validation Pipeline (wwPDB-VP)	:	2.39

i

X-RAY DIFFRACTION

A.

the following graphic. The table shows the number of entries on which the scores are based.



Similar resolution
(#Entries, resolution range(Å))

The numeric value for each fraction is indicated below the corresponding segment, with a dot representing fractions $\leq 5\%$. The upper red bar (where present) indicates the fraction of residues that have poor fit to the electron density. The numeric value is given above the bar.

Quality of chain

2 Entry composition [i](#)

There are 6 unique types of molecules in this entry. The entry contains 1404 atoms, of which 0 are hydrogens and 0 are deuteriums.

In the tables below, the ZeroOcc column contains the number of atoms modelled with zero occupancy, the AltConf column contains the number of residues with at least one atom in alternate conformation and the Trace column contains the number of residues modelled with at most 2 atoms.

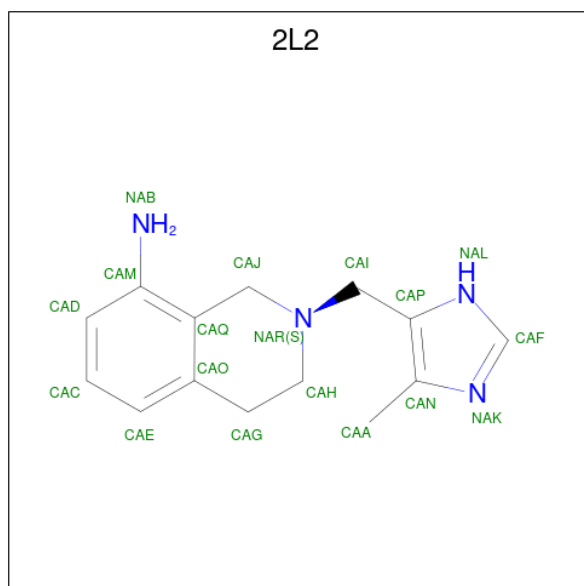
- Molecule 1 is a protein called CD44 antigen.

Mol	Chain	Residues	Atoms					ZeroOcc	AltConf	Trace
1	A	150	Total	C	N	O	S	0	9	0
			1239	768	216	247	8			

There is a discrepancy between the modelled and reference sequences:

Chain	Residue	Modelled	Actual	Comment	Reference
A	24	ASN	-	expression tag	UNP P15379

- Molecule 2 is 2-[(4-methyl-1H-imidazol-5-yl)methyl]-1,2,3,4-tetrahydroisoquinolin-8-amine (three-letter code: 2L2) (formula: C₁₄H₁₈N₄).



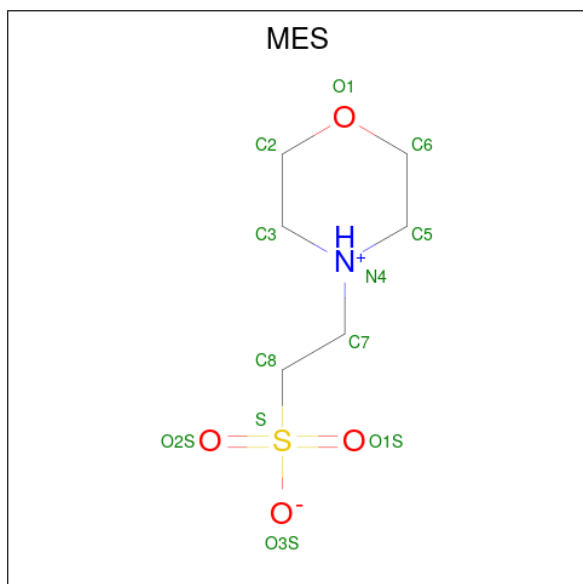
Mol	Chain	Residues	Atoms			ZeroOcc	AltConf
2	A	1	Total	C	N	0	0
			18	14	4		

- Molecule 3 is DIMETHYL SULFOXIDE (three-letter code: DMS) (formula: C₂H₆OS).



Mol	Chain	Residues	Atoms				ZeroOcc	AltConf
3	A	1	Total	C	O	S	0	0
			4	2	1	1		

- Molecule 4 is 2-(N-MORPHOLINO)-ETHANESULFONIC ACID (three-letter code: MES) (formula: $C_6H_{13}NO_4S$).



Mol	Chain	Residues	Atoms					ZeroOcc	AltConf
4	A	1	Total	C	N	O	S	0	0
			12	6	1	4	1		

- Molecule 5 is SULFATE ION (three-letter code: SO4) (formula: O_4S).



Mol	Chain	Residues	Atoms			ZeroOcc	AltConf
5	A	1	Total	O	S	0	0
			5	4	1		
5	A	1	Total	O	S	0	0
			5	4	1		
5	A	1	Total	O	S	0	0
			5	4	1		

- Molecule 6 is water.

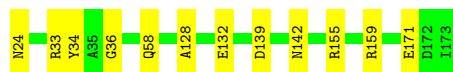
Mol	Chain	Residues	Atoms		ZeroOcc	AltConf
6	A	116	Total	O	0	0
			116	116		

3 Residue-property plots [i](#)

These plots are drawn for all protein, RNA, DNA and oligosaccharide chains in the entry. The first graphic for a chain summarises the proportions of the various outlier classes displayed in the second graphic. The second graphic shows the sequence view annotated by issues in geometry and electron density. Residues are color-coded according to the number of geometric quality criteria for which they contain at least one outlier: green = 0, yellow = 1, orange = 2 and red = 3 or more. A red dot above a residue indicates a poor fit to the electron density ($RSRZ > 2$). Stretches of 2 or more consecutive residues without any outlier are shown as a green connector. Residues present in the sample, but not in the model, are shown in grey.

- Molecule 1: CD44 antigen

Chain A:  92% 8%



4 Data and refinement statistics

Property	Value	Source
Space group	P 1 21 1	Depositor
Cell constants a, b, c, α , β , γ	31.00Å 82.00Å 32.00Å 90.00° 118.00° 90.00°	Depositor
Resolution (Å)	41.00 – 1.61 41.00 – 1.61	Depositor EDS
% Data completeness (in resolution range)	99.5 (41.00-1.61) 99.3 (41.00-1.61)	Depositor EDS
R_{merge}	0.07	Depositor
R_{sym}	0.08	Depositor
$\langle I/\sigma(I) \rangle$ ¹	3.20 (at 1.60Å)	Xtriage
Refinement program	REFMAC	Depositor
R, R_{free}	0.177 , 0.225 0.176 , 0.229	Depositor DCC
R_{free} test set	927 reflections (5.10%)	wwPDB-VP
Wilson B-factor (Å ²)	12.3	Xtriage
Anisotropy	0.233	Xtriage
Bulk solvent k_{sol} (e/Å ³), B_{sol} (Å ²)	0.36 , 31.4	EDS
L-test for twinning ²	$\langle L \rangle = 0.52$, $\langle L^2 \rangle = 0.35$	Xtriage
Estimated twinning fraction	0.027 for h,-k,-h-l	Xtriage
F_o, F_c correlation	0.96	EDS
Total number of atoms	1404	wwPDB-VP
Average B, all atoms (Å ²)	13.0	wwPDB-VP

Xtriage's analysis on translational NCS is as follows: *The largest off-origin peak in the Patterson function is 7.96% of the height of the origin peak. No significant pseudotranslation is detected.*

¹Intensities estimated from amplitudes.

²Theoretical values of $\langle |L| \rangle$, $\langle L^2 \rangle$ for acentric reflections are 0.5, 0.333 respectively for untwinned datasets, and 0.375, 0.2 for perfectly twinned datasets.

5 Model quality [i](#)

5.1 Standard geometry [i](#)

Bond lengths and bond angles in the following residue types are not validated in this section: SO4, 2L2, MES, DMS

The Z score for a bond length (or angle) is the number of standard deviations the observed value is removed from the expected value. A bond length (or angle) with $|Z| > 5$ is considered an outlier worth inspection. RMSZ is the root-mean-square of all Z scores of the bond lengths (or angles).

Mol	Chain	Bond lengths		Bond angles	
		RMSZ	$\# Z > 5$	RMSZ	$\# Z > 5$
1	A	0.71	0/1263	0.77	2/1718 (0.1%)

There are no bond length outliers.

All (2) bond angle outliers are listed below:

Mol	Chain	Res	Type	Atoms	Z	Observed(°)	Ideal(°)
1	A	159	ARG	NE-CZ-NH2	-7.69	116.45	120.30
1	A	139	ASP	CB-CG-OD1	5.09	122.88	118.30

There are no chirality outliers.

There are no planarity outliers.

5.2 Too-close contacts [i](#)

In the following table, the Non-H and H(model) columns list the number of non-hydrogen atoms and hydrogen atoms in the chain respectively. The H(added) column lists the number of hydrogen atoms added and optimized by MolProbity. The Clashes column lists the number of clashes within the asymmetric unit, whereas Symm-Clashes lists symmetry-related clashes.

Mol	Chain	Non-H	H(model)	H(added)	Clashes	Symm-Clashes
1	A	1239	0	1174	5	0
2	A	18	0	18	1	0
3	A	4	0	6	0	0
4	A	12	0	12	2	0
5	A	15	0	0	0	0
6	A	116	0	0	0	0
All	All	1404	0	1210	6	0

The all-atom clashscore is defined as the number of clashes found per 1000 atoms (including

hydrogen atoms). The all-atom clashscore for this structure is 2.

The worst 5 of 6 close contacts within the same asymmetric unit are listed below, sorted by their clash magnitude.

Atom-1	Atom-2	Interatomic distance (Å)	Clash overlap (Å)
1:A:36:GLY:HA2	1:A:128:ALA:HB3	1.98	0.45
1:A:171:GLU:H	1:A:171:GLU:CD	2.19	0.44
2:A:201:2L2:H19	4:A:203:MES:H81	2.00	0.44
1:A:58[B]:GLN:OE1	1:A:142:ASN:ND2	2.51	0.44
1:A:34:TYR:CE1	1:A:132:GLU:HG3	2.53	0.43

There are no symmetry-related clashes.

5.3 Torsion angles [i](#)

5.3.1 Protein backbone [i](#)

In the following table, the Percentiles column shows the percent Ramachandran outliers of the chain as a percentile score with respect to all X-ray entries followed by that with respect to entries of similar resolution.

The Analysed column shows the number of residues for which the backbone conformation was analysed, and the total number of residues.

Mol	Chain	Analysed	Favoured	Allowed	Outliers	Percentiles	
1	A	156/150 (104%)	151 (97%)	5 (3%)	0	100	100

There are no Ramachandran outliers to report.

5.3.2 Protein sidechains [i](#)

In the following table, the Percentiles column shows the percent sidechain outliers of the chain as a percentile score with respect to all X-ray entries followed by that with respect to entries of similar resolution.

The Analysed column shows the number of residues for which the sidechain conformation was analysed, and the total number of residues.

Mol	Chain	Analysed	Rotameric	Outliers	Percentiles	
1	A	140/131 (107%)	138 (99%)	2 (1%)	62	42

All (2) residues with a non-rotameric sidechain are listed below:

Mol	Chain	Res	Type
1	A	24	ASN
1	A	33	ARG

Sometimes sidechains can be flipped to improve hydrogen bonding and reduce clashes. All (3) such sidechains are listed below:

Mol	Chain	Res	Type
1	A	24	ASN
1	A	25	GLN
1	A	142	ASN

5.3.3 RNA [i](#)

There are no RNA molecules in this entry.

5.4 Non-standard residues in protein, DNA, RNA chains [i](#)

There are no non-standard protein/DNA/RNA residues in this entry.

5.5 Carbohydrates [i](#)

There are no oligosaccharides in this entry.

5.6 Ligand geometry [i](#)

6 ligands are modelled in this entry.

In the following table, the Counts columns list the number of bonds (or angles) for which Mogul statistics could be retrieved, the number of bonds (or angles) that are observed in the model and the number of bonds (or angles) that are defined in the Chemical Component Dictionary. The Link column lists molecule types, if any, to which the group is linked. The Z score for a bond length (or angle) is the number of standard deviations the observed value is removed from the expected value. A bond length (or angle) with $|Z| > 2$ is considered an outlier worth inspection. RMSZ is the root-mean-square of all Z scores of the bond lengths (or angles).

Mol	Type	Chain	Res	Link	Bond lengths			Bond angles		
					Counts	RMSZ	$\# Z > 2$	Counts	RMSZ	$\# Z > 2$
5	SO4	A	205	-	4,4,4	0.30	0	6,6,6	0.13	0
5	SO4	A	204	-	4,4,4	0.26	0	6,6,6	0.39	0
4	MES	A	203	-	12,12,12	1.67	1 (8%)	15,16,16	2.48	4 (26%)
3	DMS	A	202	-	3,3,3	1.98	1 (33%)	3,3,3	1.15	0

Mol	Type	Chain	Res	Link	Bond lengths			Bond angles		
					Counts	RMSZ	# Z > 2	Counts	RMSZ	# Z > 2
5	SO4	A	206	-	4,4,4	0.35	0	6,6,6	0.16	0
2	2L2	A	201	-	16,20,20	2.60	5 (31%)	19,28,28	1.15	2 (10%)

In the following table, the Chirals column lists the number of chiral outliers, the number of chiral centers analysed, the number of these observed in the model and the number defined in the Chemical Component Dictionary. Similar counts are reported in the Torsion and Rings columns. '-' means no outliers of that kind were identified.

Mol	Type	Chain	Res	Link	Chirals	Torsions	Rings
4	MES	A	203	-	-	1/6/14/14	0/1/1/1
2	2L2	A	201	-	-	0/4/13/13	0/3/3/3

The worst 5 of 7 bond length outliers are listed below:

Mol	Chain	Res	Type	Atoms	Z	Observed(Å)	Ideal(Å)
2	A	201	2L2	CAP-CAN	-5.70	1.34	1.43
4	A	203	MES	C8-S	-5.29	1.70	1.77
2	A	201	2L2	CAG-CAO	-5.11	1.42	1.51
2	A	201	2L2	CAM-CAQ	4.24	1.42	1.40
3	A	202	DMS	O-S	3.24	1.71	1.50

The worst 5 of 6 bond angle outliers are listed below:

Mol	Chain	Res	Type	Atoms	Z	Observed(°)	Ideal(°)
4	A	203	MES	C5-N4-C3	7.18	124.30	108.84
4	A	203	MES	C7-N4-C5	3.57	120.75	111.24
4	A	203	MES	O1S-S-C8	2.98	111.24	106.73
2	A	201	2L2	CAP-CAI-NAR	-2.53	109.88	113.48
2	A	201	2L2	CAQ-CAM-NAB	-2.24	118.29	121.10

There are no chirality outliers.

All (1) torsion outliers are listed below:

Mol	Chain	Res	Type	Atoms
4	A	203	MES	C8-C7-N4-C5

There are no ring outliers.

2 monomers are involved in 2 short contacts:

Mol	Chain	Res	Type	Clashes	Symm-Clashes
4	A	203	MES	2	0

Continued on next page...

Continued from previous page...

Mol	Chain	Res	Type	Clashes	Symm-Clashes
2	A	201	2L2	1	0

5.7 Other polymers [i](#)

There are no such residues in this entry.

5.8 Polymer linkage issues [i](#)

There are no chain breaks in this entry.

6 Fit of model and data [i](#)

6.1 Protein, DNA and RNA chains [i](#)

In the following table, the column labelled ‘#RSRZ> 2’ contains the number (and percentage) of RSRZ outliers, followed by percent RSRZ outliers for the chain as percentile scores relative to all X-ray entries and entries of similar resolution. The OWAB column contains the minimum, median, 95th percentile and maximum values of the occupancy-weighted average B-factor per residue. The column labelled ‘Q< 0.9’ lists the number of (and percentage) of residues with an average occupancy less than 0.9.

Mol	Chain	Analysed	<RSRZ>	#RSRZ>2	OWAB(Å ²)	Q<0.9
1	A	150/150 (100%)	-0.41	0 100 100	4, 10, 20, 29	9 (6%)

There are no RSRZ outliers to report.

6.2 Non-standard residues in protein, DNA, RNA chains [i](#)

There are no non-standard protein/DNA/RNA residues in this entry.

6.3 Carbohydrates [i](#)

There are no monosaccharides in this entry.

6.4 Ligands [i](#)

In the following table, the Atoms column lists the number of modelled atoms in the group and the number defined in the chemical component dictionary. The B-factors column lists the minimum, median, 95th percentile and maximum values of B factors of atoms in the group. The column labelled ‘Q< 0.9’ lists the number of atoms with occupancy less than 0.9.

Mol	Type	Chain	Res	Atoms	RSCC	RSR	B-factors(Å ²)	Q<0.9
5	SO4	A	204	5/5	0.77	0.17	47,47,48,49	0
5	SO4	A	206	5/5	0.80	0.15	49,50,51,51	0
3	DMS	A	202	4/4	0.81	0.15	12,13,13,17	0
4	MES	A	203	12/12	0.82	0.16	28,31,32,33	0
5	SO4	A	205	5/5	0.85	0.15	50,50,52,52	0
2	2L2	A	201	18/18	0.95	0.06	9,11,13,13	0

6.5 Other polymers [i](#)

There are no such residues in this entry.