



Full wwPDB X-ray Structure Validation Report ⓘ

Jun 22, 2024 – 11:11 PM EDT

PDB ID : 5NH0
Title : Structure of human coronavirus NL63 main protease in complex with the alpha-ketoamide tert-Butyl ((S)-4-(benzylamino)-3,4-dioxo-1-((S)-2-oxopyrrolidin-3-yl)butan-2-yl)carbamate (tert-butyl -GlnLactam-CO-CO-NH-benzyl)
Authors : Zhang, L.; Hilgenfeld, R.
Deposited on : 2017-03-21
Resolution : 2.35 Å(reported)

This is a Full wwPDB X-ray Structure Validation Report for a publicly released PDB entry.

We welcome your comments at validation@mail.wwpdb.org

A user guide is available at

<https://www.wwpdb.org/validation/2017/XrayValidationReportHelp>

with specific help available everywhere you see the ⓘ symbol.

The types of validation reports are described at

<http://www.wwpdb.org/validation/2017/FAQs#types>.

The following versions of software and data (see [references](#) ①) were used in the production of this report:

MolProbity	:	4.02b-467
Mogul	:	1.8.5 (274361), CSD as541be (2020)
Xtriage (Phenix)	:	1.13
EDS	:	2.37.1
buster-report	:	1.1.7 (2018)
Percentile statistics	:	20191225.v01 (using entries in the PDB archive December 25th 2019)
Refmac	:	5.8.0158
CCP4	:	7.0.044 (Gargrove)
Ideal geometry (proteins)	:	Engh & Huber (2001)
Ideal geometry (DNA, RNA)	:	Parkinson et al. (1996)
Validation Pipeline (wwPDB-VP)	:	2.37.1

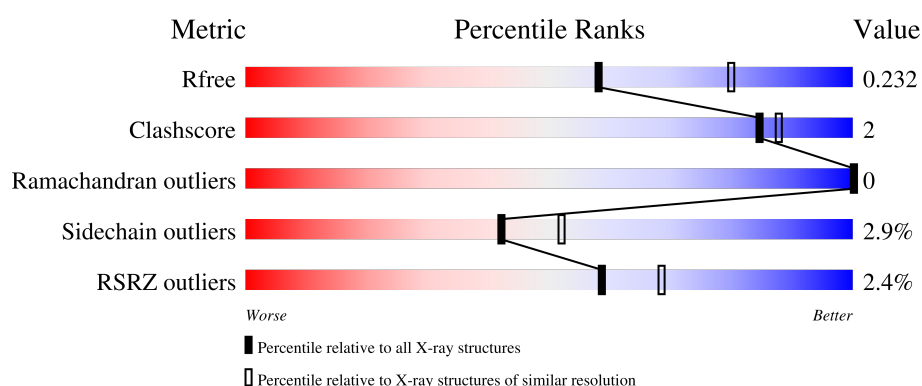
1 Overall quality at a glance

The following experimental techniques were used to determine the structure:

X-RAY DIFFRACTION

The reported resolution of this entry is 2.35 Å.

Percentile scores (ranging between 0-100) for global validation metrics of the entry are shown in the following graphic. The table shows the number of entries on which the scores are based.



Metric	Whole archive (#Entries)	Similar resolution (#Entries, resolution range(Å))
R_{free}	130704	1164 (2.36-2.36)
Clashscore	141614	1232 (2.36-2.36)
Ramachandran outliers	138981	1211 (2.36-2.36)
Sidechain outliers	138945	1212 (2.36-2.36)
RSRZ outliers	127900	1150 (2.36-2.36)

The table below summarises the geometric issues observed across the polymeric chains and their fit to the electron density. The red, orange, yellow and green segments of the lower bar indicate the fraction of residues that contain outliers for ≥ 3 , 2, 1 and 0 types of geometric quality criteria respectively. A grey segment represents the fraction of residues that are not modelled. The numeric value for each fraction is indicated below the corresponding segment, with a dot representing fractions $\leq 5\%$. The upper red bar (where present) indicates the fraction of residues that have poor fit to the electron density. The numeric value is given above the bar.

Mol	Chain	Length	Quality of chain
1	A	300	<div> <div>%</div> <div> <div></div> <div>92%</div> <div>6% •</div> </div> </div>
1	B	300	<div> <div>3%</div> <div> <div></div> <div>92%</div> <div>7% •</div> </div> </div>
1	C	300	<div> <div>3%</div> <div> <div></div> <div>92%</div> <div>6% •</div> </div> </div>

2 Entry composition [i](#)

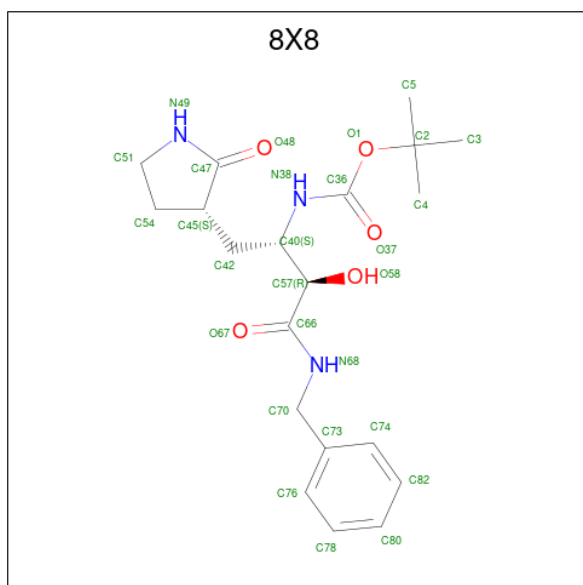
There are 5 unique types of molecules in this entry. The entry contains 7396 atoms, of which 0 are hydrogens and 0 are deuteriums.

In the tables below, the ZeroOcc column contains the number of atoms modelled with zero occupancy, the AltConf column contains the number of residues with at least one atom in alternate conformation and the Trace column contains the number of residues modelled with at most 2 atoms.

- Molecule 1 is a protein called 3C-like proteinase.

Mol	Chain	Residues	Atoms					ZeroOcc	AltConf	Trace
1	A	299	Total	C	N	O	S	0	1	0
			2271	1438	388	428	17			
1	B	300	Total	C	N	O	S	0	0	0
			2273	1439	389	428	17			
1	C	299	Total	C	N	O	S	0	1	0
			2272	1437	389	428	18			

- Molecule 2 is {tert}-butyl {N}-[(2 {S},3 {R})-3-oxidanyl-4-oxidanylidene-1-[(3 {S})-2-oxidanylidene-3-yl]-4-[(phenylmethyl)amino]butan-2-yl]carbamate (three-letter code: 8X8) (formula: C₂₀H₂₉N₃O₅).



Mol	Chain	Residues	Atoms				ZeroOcc	AltConf
2	A	1	Total	C	N	O	0	0
			28	20	3	5		
2	B	1	Total	C	N	O	0	0
			28	20	3	5		

Continued on next page...

Continued from previous page...

Mol	Chain	Residues	Atoms				ZeroOcc	AltConf
2	C	1	Total	C	N	O	0	0
			28	20	3	5		

- Molecule 3 is DIMETHYL SULFOXIDE (three-letter code: DMS) (formula: C_2H_6OS).



Mol	Chain	Residues	Atoms				ZeroOcc	AltConf
3	A	1	Total	C	O	S	0	0
			4	2	1	1		
3	A	1	Total	C	O	S	0	0
			4	2	1	1		
3	C	1	Total	C	O	S	0	0
			4	2	1	1		

- Molecule 4 is GLYCEROL (three-letter code: GOL) (formula: $C_3H_8O_3$).



Mol	Chain	Residues	Atoms			ZeroOcc	AltConf
4	C	1	Total	C	O	0	0
			6	3	3		
4	C	1	Total	C	O	0	0
			6	3	3		

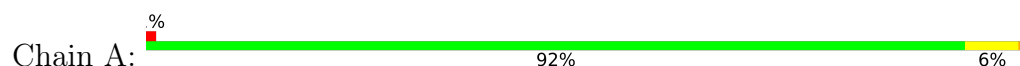
- Molecule 5 is water.

Mol	Chain	Residues	Atoms		ZeroOcc	AltConf
5	A	205	Total	O	0	0
			205	205		
5	B	126	Total	O	0	0
			126	126		
5	C	141	Total	O	0	0
			141	141		

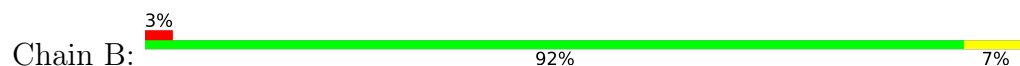
3 Residue-property plots [i](#)

These plots are drawn for all protein, RNA, DNA and oligosaccharide chains in the entry. The first graphic for a chain summarises the proportions of the various outlier classes displayed in the second graphic. The second graphic shows the sequence view annotated by issues in geometry and electron density. Residues are color-coded according to the number of geometric quality criteria for which they contain at least one outlier: green = 0, yellow = 1, orange = 2 and red = 3 or more. A red dot above a residue indicates a poor fit to the electron density ($RSRZ > 2$). Stretches of 2 or more consecutive residues without any outlier are shown as a green connector. Residues present in the sample, but not in the model, are shown in grey.

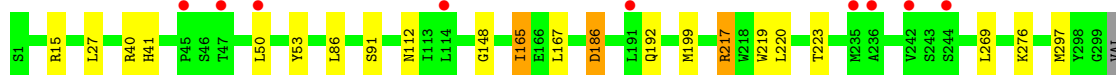
- Molecule 1: 3C-like proteinase



- Molecule 1: 3C-like proteinase



- Molecule 1: 3C-like proteinase



4 Data and refinement statistics

Property	Value	Source
Space group	C 2 2 21	Depositor
Cell constants a, b, c, α , β , γ	133.65Å 211.29Å 118.26Å 90.00° 90.00° 90.00°	Depositor
Resolution (Å)	42.89 – 2.35 42.89 – 2.35	Depositor EDS
% Data completeness (in resolution range)	98.0 (42.89-2.35) 98.0 (42.89-2.35)	Depositor EDS
R_{merge}	0.08	Depositor
R_{sym}	(Not available)	Depositor
$\langle I/\sigma(I) \rangle$ ¹	2.75 (at 2.34Å)	Xtriage
Refinement program	REFMAC 5.8.0158	Depositor
R, R_{free}	0.190 , 0.232 0.196 , 0.232	Depositor DCC
R_{free} test set	3526 reflections (5.15%)	wwPDB-VP
Wilson B-factor (Å ²)	37.3	Xtriage
Anisotropy	0.515	Xtriage
Bulk solvent k_{sol} (e/Å ³), B_{sol} (Å ²)	0.32 , 39.0	EDS
L-test for twinning ²	$\langle L \rangle = 0.49$, $\langle L^2 \rangle = 0.32$	Xtriage
Estimated twinning fraction	No twinning to report.	Xtriage
F_o, F_c correlation	0.95	EDS
Total number of atoms	7396	wwPDB-VP
Average B, all atoms (Å ²)	44.0	wwPDB-VP

Xtriage's analysis on translational NCS is as follows: *The largest off-origin peak in the Patterson function is 3.15% of the height of the origin peak. No significant pseudotranslation is detected.*

¹Intensities estimated from amplitudes.

²Theoretical values of $\langle |L| \rangle$, $\langle L^2 \rangle$ for acentric reflections are 0.5, 0.333 respectively for untwinned datasets, and 0.375, 0.2 for perfectly twinned datasets.

5 Model quality

5.1 Standard geometry

Bond lengths and bond angles in the following residue types are not validated in this section: GOL, DMS, 8X8

The Z score for a bond length (or angle) is the number of standard deviations the observed value is removed from the expected value. A bond length (or angle) with $|Z| > 5$ is considered an outlier worth inspection. RMSZ is the root-mean-square of all Z scores of the bond lengths (or angles).

Mol	Chain	Bond lengths		Bond angles	
		RMSZ	$\# Z > 5$	RMSZ	$\# Z > 5$
1	A	0.98	1/2325 (0.0%)	0.96	5/3158 (0.2%)
1	B	0.90	1/2324 (0.0%)	0.97	7/3157 (0.2%)
1	C	0.90	0/2323	0.92	3/3155 (0.1%)
All	All	0.93	2/6972 (0.0%)	0.95	15/9470 (0.2%)

All (2) bond length outliers are listed below:

Mol	Chain	Res	Type	Atoms	Z	Observed(Å)	Ideal(Å)
1	B	195	SER	CB-OG	-6.21	1.34	1.42
1	A	118	GLU	CD-OE1	6.18	1.32	1.25

All (15) bond angle outliers are listed below:

Mol	Chain	Res	Type	Atoms	Z	Observed(°)	Ideal(°)
1	B	52	ASP	CB-CG-OD2	-8.16	110.95	118.30
1	B	102	PHE	CB-CG-CD2	-7.21	115.75	120.80
1	A	61	ARG	NE-CZ-NH1	6.77	123.69	120.30
1	A	217	ARG	NE-CZ-NH1	6.14	123.37	120.30
1	B	297	MET	CA-CB-CG	5.91	123.35	113.30
1	B	102	PHE	CB-CG-CD1	5.82	124.88	120.80
1	C	297	MET	CA-CB-CG	-5.82	103.41	113.30
1	B	15	ARG	NE-CZ-NH1	5.47	123.03	120.30
1	C	15	ARG	NE-CZ-NH1	5.40	123.00	120.30
1	A	6	MET	CG-SD-CE	-5.31	91.70	100.20
1	A	186	ASP	CB-CG-OD1	-5.26	113.57	118.30
1	B	6	MET	CB-CA-C	-5.24	99.92	110.40
1	B	165	ILE	CB-CA-C	-5.22	101.16	111.60
1	A	217	ARG	NE-CZ-NH2	-5.18	117.71	120.30
1	C	217	ARG	NE-CZ-NH1	5.11	122.85	120.30

There are no chirality outliers.

There are no planarity outliers.

5.2 Too-close contacts

In the following table, the Non-H and H(model) columns list the number of non-hydrogen atoms and hydrogen atoms in the chain respectively. The H(added) column lists the number of hydrogen atoms added and optimized by MolProbity. The Clashes column lists the number of clashes within the asymmetric unit, whereas Symm-Clashes lists symmetry-related clashes.

Mol	Chain	Non-H	H(model)	H(added)	Clashes	Symm-Clashes
1	A	2271	0	2209	10	0
1	B	2273	0	2215	12	0
1	C	2272	0	2210	11	0
2	A	28	0	0	1	0
2	B	28	0	0	1	0
2	C	28	0	0	1	0
3	A	8	0	12	0	0
3	C	4	0	6	0	0
4	C	12	0	16	0	0
5	A	205	0	0	1	1
5	B	126	0	0	0	0
5	C	141	0	0	0	0
All	All	7396	0	6668	31	1

The all-atom clashscore is defined as the number of clashes found per 1000 atoms (including hydrogen atoms). The all-atom clashscore for this structure is 2.

All (31) close contacts within the same asymmetric unit are listed below, sorted by their clash magnitude.

Atom-1	Atom-2	Interatomic distance (Å)	Clash overlap (Å)
1:B:214:ASN:ND2	1:B:297:MET:CE	2.42	0.82
1:B:214:ASN:ND2	1:B:297:MET:HE3	1.95	0.81
1:B:214:ASN:HD21	1:B:297:MET:HE3	1.46	0.80
1:C:165:ILE:HD11	1:C:167:LEU:HD23	1.74	0.69
1:B:214:ASN:HD21	1:B:297:MET:CE	2.05	0.68
1:C:41:HIS:NE2	2:C:301:8X8:O58	2.27	0.68
1:C:186:ASP:H	1:C:192:GLN:HE22	1.42	0.65
1:B:214:ASN:ND2	1:B:297:MET:HE1	2.10	0.65
1:C:165:ILE:HD11	1:C:167:LEU:CD2	2.31	0.60
1:C:186:ASP:N	1:C:192:GLN:HE22	2.02	0.58
1:B:41:HIS:NE2	2:B:401:8X8:O58	2.38	0.57

Continued on next page...

Continued from previous page...

Atom-1	Atom-2	Interatomic distance (Å)	Clash overlap (Å)
1:B:214:ASN:HD22	1:B:297:MET:HE1	1.71	0.54
1:B:285:CYS:SG	1:B:287:GLU:HB2	2.52	0.49
1:A:293:VAL:O	1:A:297:MET:HG2	2.13	0.48
1:A:165:ILE:HG12	1:A:173:VAL:HB	1.95	0.48
1:B:165:ILE:HG12	1:B:173:VAL:HB	1.97	0.46
1:A:41:HIS:NE2	2:A:301:8X8:O58	2.49	0.45
1:A:95:VAL:O	1:C:217:ARG:HD2	2.17	0.45
1:A:285:CYS:SG	1:A:287[A]:GLU:HB2	2.56	0.45
1:B:19:ARG:NH2	1:B:118:GLU:OE1	2.50	0.44
1:B:112:ASN:O	1:B:148:GLY:HA2	2.17	0.44
1:A:95:VAL:HG23	1:C:220:LEU:HD23	2.00	0.43
1:C:112:ASN:O	1:C:148:GLY:HA2	2.19	0.42
1:C:219:TRP:HB2	1:C:269:LEU:HD11	2.01	0.42
1:C:41:HIS:HB3	1:C:53:TYR:OH	2.20	0.42
1:A:112:ASN:O	1:A:148:GLY:HA2	2.19	0.41
1:B:40:ARG:HA	1:B:86:LEU:HG	2.02	0.41
1:A:254:LYS:HE2	5:A:583:HOH:O	2.20	0.41
1:A:223:THR:HB	1:A:264:ALA:HB1	2.02	0.41
1:A:219:TRP:HB2	1:A:269:LEU:HD11	2.03	0.41
1:C:40:ARG:HA	1:C:86:LEU:HG	2.03	0.40

All (1) symmetry-related close contacts are listed below. The label for Atom-2 includes the symmetry operator and encoded unit-cell translations to be applied.

Atom-1	Atom-2	Interatomic distance (Å)	Clash overlap (Å)
5:A:540:HOH:O	5:A:568:HOH:O[3_655]	2.06	0.14

5.3 Torsion angles [i](#)

5.3.1 Protein backbone [i](#)

In the following table, the Percentiles column shows the percent Ramachandran outliers of the chain as a percentile score with respect to all X-ray entries followed by that with respect to entries of similar resolution.

The Analysed column shows the number of residues for which the backbone conformation was analysed, and the total number of residues.

Mol	Chain	Analysed	Favoured	Allowed	Outliers	Percentiles
1	A	298/300 (99%)	293 (98%)	5 (2%)	0	100 100

Continued on next page...

Continued from previous page...

Mol	Chain	Analysed	Favoured	Allowed	Outliers	Percentiles	
1	B	298/300 (99%)	292 (98%)	6 (2%)	0	100	100
1	C	298/300 (99%)	293 (98%)	5 (2%)	0	100	100
All	All	894/900 (99%)	878 (98%)	16 (2%)	0	100	100

There are no Ramachandran outliers to report.

5.3.2 Protein sidechains ⓘ

In the following table, the Percentiles column shows the percent sidechain outliers of the chain as a percentile score with respect to all X-ray entries followed by that with respect to entries of similar resolution.

The Analysed column shows the number of residues for which the sidechain conformation was analysed, and the total number of residues.

Mol	Chain	Analysed	Rotameric	Outliers	Percentiles	
1	A	250/251 (100%)	244 (98%)	6 (2%)	49	59
1	B	251/251 (100%)	242 (96%)	9 (4%)	35	43
1	C	251/251 (100%)	243 (97%)	8 (3%)	39	47
All	All	752/753 (100%)	729 (97%)	23 (3%)	42	48

All (23) residues with a non-rotameric sidechain are listed below:

Mol	Chain	Res	Type
1	A	27	LEU
1	A	46	SER
1	A	165	ILE
1	A	186	ASP
1	A	287[A]	GLU
1	A	287[B]	GLU
1	B	27	LEU
1	B	165	ILE
1	B	186	ASP
1	B	217	ARG
1	B	224	ARG
1	B	246	GLU
1	B	268	HIS
1	B	287	GLU
1	B	297	MET
1	C	27	LEU

Continued on next page...

Continued from previous page...

Mol	Chain	Res	Type
1	C	50	LEU
1	C	91	SER
1	C	165	ILE
1	C	186	ASP
1	C	199	MET
1	C	223	THR
1	C	276	LYS

Sometimes sidechains can be flipped to improve hydrogen bonding and reduce clashes. All (2) such sidechains are listed below:

Mol	Chain	Res	Type
1	B	214	ASN
1	C	192	GLN

5.3.3 RNA [i](#)

There are no RNA molecules in this entry.

5.4 Non-standard residues in protein, DNA, RNA chains [i](#)

There are no non-standard protein/DNA/RNA residues in this entry.

5.5 Carbohydrates [i](#)

There are no monosaccharides in this entry.

5.6 Ligand geometry [i](#)

8 ligands are modelled in this entry.

In the following table, the Counts columns list the number of bonds (or angles) for which Mogul statistics could be retrieved, the number of bonds (or angles) that are observed in the model and the number of bonds (or angles) that are defined in the Chemical Component Dictionary. The Link column lists molecule types, if any, to which the group is linked. The Z score for a bond length (or angle) is the number of standard deviations the observed value is removed from the expected value. A bond length (or angle) with $|Z| > 2$ is considered an outlier worth inspection. RMSZ is the root-mean-square of all Z scores of the bond lengths (or angles).

Mol	Type	Chain	Res	Link	Bond lengths			Bond angles		
					Counts	RMSZ	# Z > 2	Counts	RMSZ	# Z > 2
3	DMS	A	303	-	3,3,3	0.33	0	3,3,3	0.87	0
2	8X8	A	301	1	29,29,29	1.82	3 (10%)	36,40,40	2.23	12 (33%)
2	8X8	B	401	1	29,29,29	1.77	4 (13%)	36,40,40	2.46	10 (27%)
4	GOL	C	303	-	5,5,5	0.91	0	5,5,5	0.70	0
3	DMS	A	302	-	3,3,3	0.22	0	3,3,3	1.45	0
2	8X8	C	301	1	29,29,29	1.53	3 (10%)	36,40,40	1.77	8 (22%)
4	GOL	C	302	-	5,5,5	0.96	0	5,5,5	1.79	2 (40%)
3	DMS	C	304	-	3,3,3	0.41	0	3,3,3	1.25	0

In the following table, the Chirals column lists the number of chiral outliers, the number of chiral centers analysed, the number of these observed in the model and the number defined in the Chemical Component Dictionary. Similar counts are reported in the Torsion and Rings columns. '-' means no outliers of that kind were identified.

Mol	Type	Chain	Res	Link	Chirals	Torsions	Rings
2	8X8	A	301	1	-	6/26/36/36	0/2/2/2
2	8X8	B	401	1	-	3/26/36/36	0/2/2/2
4	GOL	C	303	-	-	2/4/4/4	-
2	8X8	C	301	1	-	6/26/36/36	0/2/2/2
4	GOL	C	302	-	-	0/4/4/4	-

All (10) bond length outliers are listed below:

Mol	Chain	Res	Type	Atoms	Z	Observed(Å)	Ideal(Å)
2	A	301	8X8	O1-C36	7.52	1.49	1.34
2	B	401	8X8	O1-C36	6.18	1.47	1.34
2	C	301	8X8	O1-C36	5.92	1.46	1.34
2	B	401	8X8	C57-C40	4.41	1.59	1.54
2	A	301	8X8	O58-C57	2.88	1.48	1.42
2	C	301	8X8	O1-C2	-2.74	1.43	1.48
2	B	401	8X8	O1-C2	-2.25	1.44	1.48
2	C	301	8X8	C42-C40	2.17	1.56	1.52
2	B	401	8X8	C66-N68	2.15	1.38	1.33
2	A	301	8X8	C42-C40	2.15	1.56	1.52

All (32) bond angle outliers are listed below:

Mol	Chain	Res	Type	Atoms	Z	Observed(°)	Ideal(°)
2	A	301	8X8	C2-O1-C36	8.03	133.34	120.99
2	B	401	8X8	C42-C40-N38	6.29	118.32	110.18

Continued on next page...

Continued from previous page...

Mol	Chain	Res	Type	Atoms	Z	Observed(°)	Ideal(°)
2	B	401	8X8	O58-C57-C40	5.98	125.50	108.54
2	B	401	8X8	O1-C36-N38	5.40	119.09	110.02
2	C	301	8X8	C42-C40-N38	5.18	116.88	110.18
2	B	401	8X8	C70-N68-C66	4.93	129.44	122.34
2	A	301	8X8	C70-N68-C66	4.50	128.81	122.34
2	A	301	8X8	C57-C40-N38	-4.34	101.86	110.03
2	B	401	8X8	C2-O1-C36	4.24	127.52	120.99
2	A	301	8X8	O58-C57-C66	-3.96	102.10	110.63
2	C	301	8X8	O1-C36-N38	3.74	116.31	110.02
2	B	401	8X8	O1-C36-O37	-3.65	118.97	125.62
2	B	401	8X8	O58-C57-C66	-3.56	102.97	110.63
2	B	401	8X8	C57-C40-N38	-3.40	103.64	110.03
2	B	401	8X8	O67-C66-N68	3.23	129.94	122.99
2	C	301	8X8	C57-C40-N38	-3.13	104.14	110.03
2	C	301	8X8	C2-O1-C36	3.01	125.62	120.99
2	C	301	8X8	C70-N68-C66	2.97	126.61	122.34
2	C	301	8X8	O1-C36-O37	-2.96	120.22	125.62
2	C	301	8X8	O58-C57-C40	2.90	116.76	108.54
2	A	301	8X8	O67-C66-C57	-2.86	114.84	120.00
4	C	302	GOL	O1-C1-C2	2.83	123.77	110.20
2	A	301	8X8	O48-C47-C45	-2.63	123.15	126.23
2	A	301	8X8	O67-C66-N68	2.58	128.54	122.99
4	C	302	GOL	O3-C3-C2	2.53	122.32	110.20
2	B	401	8X8	O67-C66-C57	-2.47	115.55	120.00
2	A	301	8X8	C73-C70-N68	-2.35	108.02	113.05
2	A	301	8X8	O37-C36-N38	-2.28	121.11	124.85
2	A	301	8X8	O1-C2-C4	2.24	116.07	107.20
2	C	301	8X8	O67-C66-N68	2.10	127.51	122.99
2	A	301	8X8	C4-C2-C3	-2.06	105.76	111.16
2	A	301	8X8	O1-C36-N38	2.01	113.40	110.02

There are no chirality outliers.

All (17) torsion outliers are listed below:

Mol	Chain	Res	Type	Atoms
4	C	303	GOL	C1-C2-C3-O3
2	A	301	8X8	O37-C36-O1-C2
2	A	301	8X8	N38-C36-O1-C2
2	A	301	8X8	C5-C2-O1-C36
2	A	301	8X8	C4-C2-O1-C36
2	A	301	8X8	C3-C2-O1-C36
2	C	301	8X8	C5-C2-O1-C36

Continued on next page...

Continued from previous page...

Mol	Chain	Res	Type	Atoms
2	C	301	8X8	C4-C2-O1-C36
2	C	301	8X8	C3-C2-O1-C36
4	C	303	GOL	O2-C2-C3-O3
2	C	301	8X8	N38-C36-O1-C2
2	C	301	8X8	O37-C36-O1-C2
2	B	401	8X8	N38-C40-C57-O58
2	C	301	8X8	N38-C40-C57-O58
2	B	401	8X8	C57-C40-N38-C36
2	A	301	8X8	N38-C40-C57-C66
2	B	401	8X8	C42-C40-C57-O58

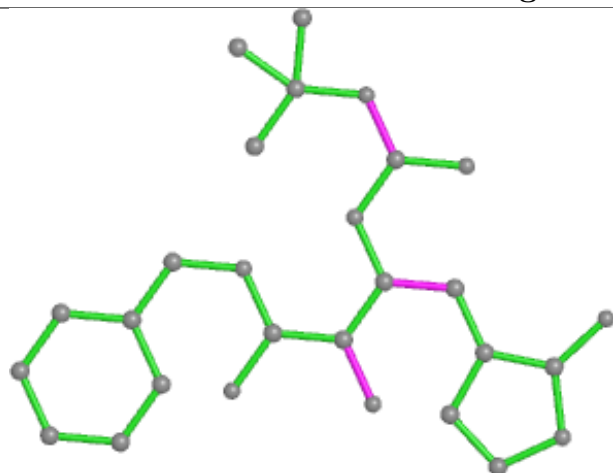
There are no ring outliers.

3 monomers are involved in 3 short contacts:

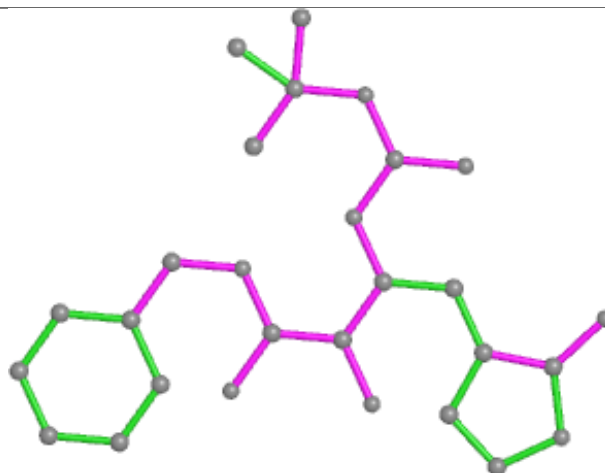
Mol	Chain	Res	Type	Clashes	Symm-Clashes
2	A	301	8X8	1	0
2	B	401	8X8	1	0
2	C	301	8X8	1	0

The following is a two-dimensional graphical depiction of Mogul quality analysis of bond lengths, bond angles, torsion angles, and ring geometry for all instances of the Ligand of Interest. In addition, ligands with molecular weight > 250 and outliers as shown on the validation Tables will also be included. For torsion angles, if less than 5% of the Mogul distribution of torsion angles is within 10 degrees of the torsion angle in question, then that torsion angle is considered an outlier. Any bond that is central to one or more torsion angles identified as an outlier by Mogul will be highlighted in the graph. For rings, the root-mean-square deviation (RMSD) between the ring in question and similar rings identified by Mogul is calculated over all ring torsion angles. If the average RMSD is greater than 60 degrees and the minimal RMSD between the ring in question and any Mogul-identified rings is also greater than 60 degrees, then that ring is considered an outlier. The outliers are highlighted in purple. The color gray indicates Mogul did not find sufficient equivalents in the CSD to analyse the geometry.

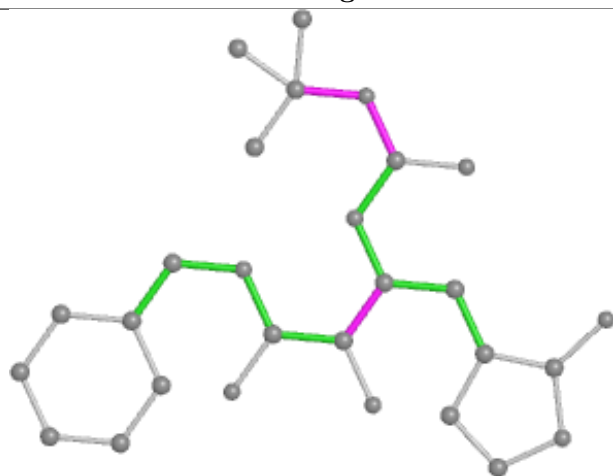
Ligand 8X8 A 301



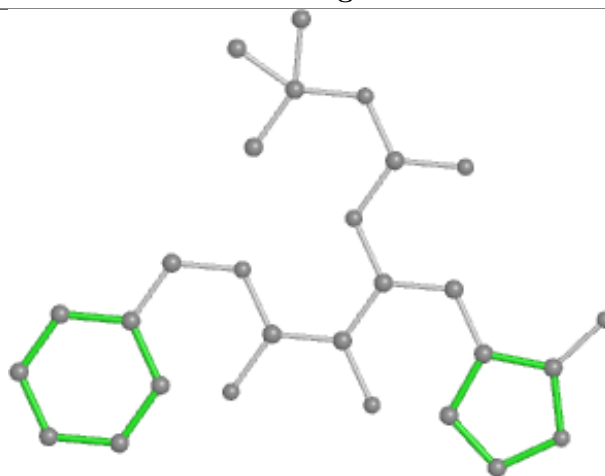
Bond lengths



Bond angles

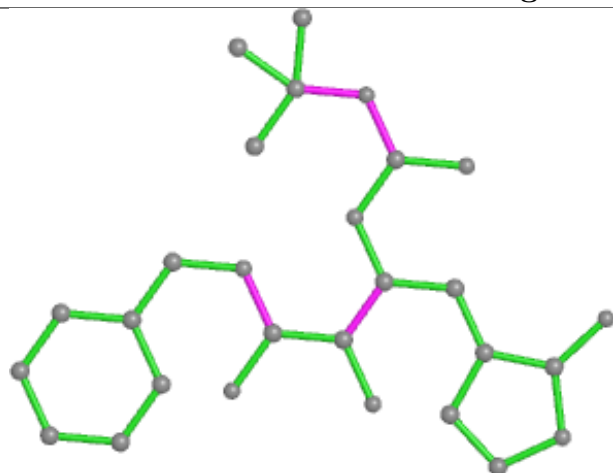


Torsions

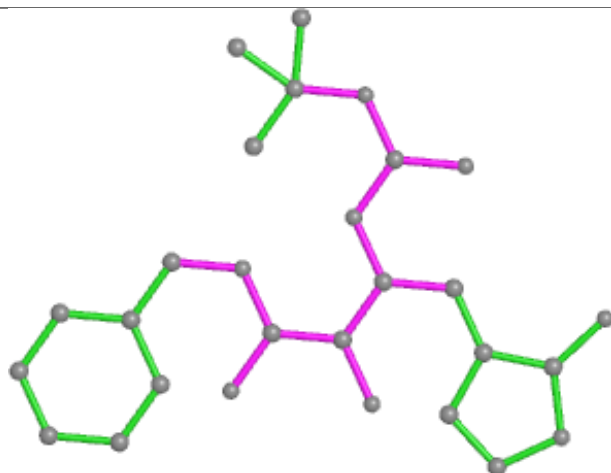


Rings

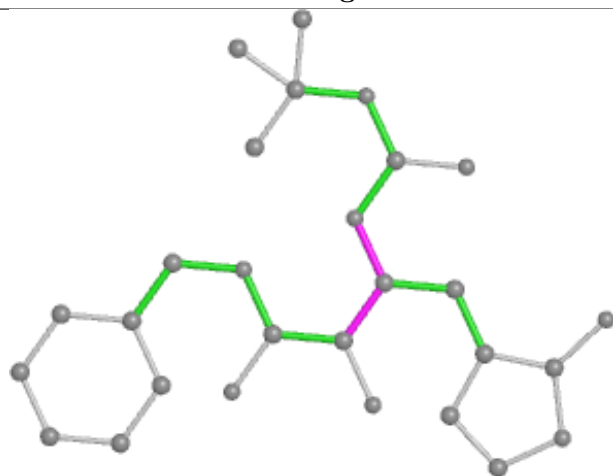
Ligand 8X8 B 401



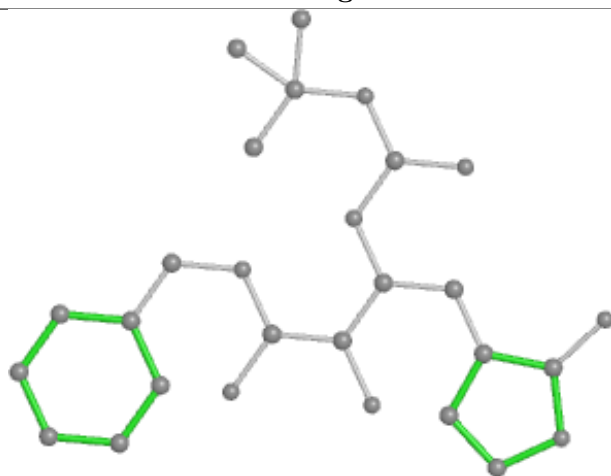
Bond lengths



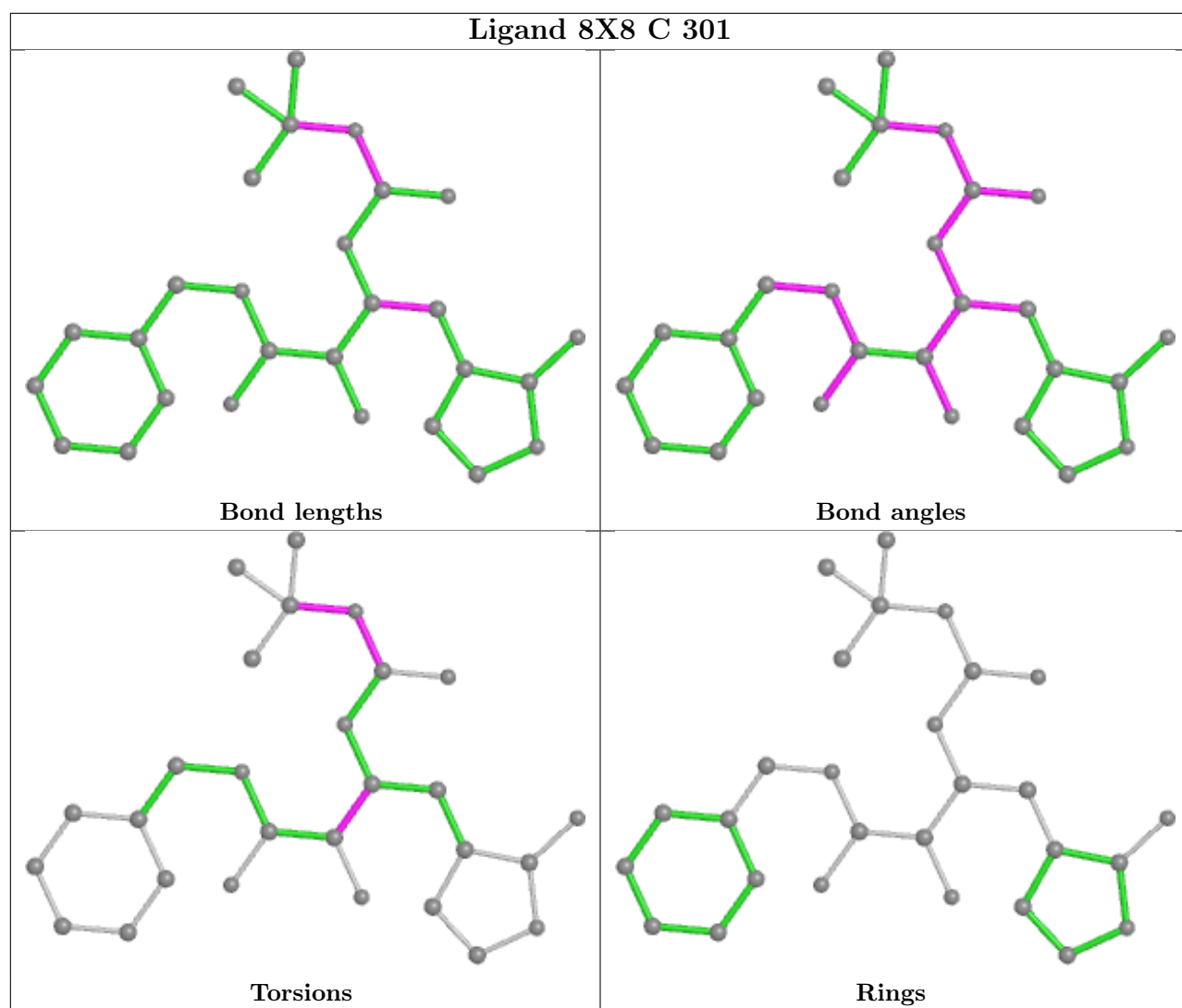
Bond angles



Torsions



Rings



5.7 Other polymers [i](#)

There are no such residues in this entry.

5.8 Polymer linkage issues [i](#)

There are no chain breaks in this entry.

6 Fit of model and data ⓘ

6.1 Protein, DNA and RNA chains ⓘ

In the following table, the column labelled ‘#RSRZ > 2’ contains the number (and percentage) of RSRZ outliers, followed by percent RSRZ outliers for the chain as percentile scores relative to all X-ray entries and entries of similar resolution. The OWAB column contains the minimum, median, 95th percentile and maximum values of the occupancy-weighted average B-factor per residue. The column labelled ‘Q < 0.9’ lists the number of (and percentage) of residues with an average occupancy less than 0.9.

Mol	Chain	Analysed	<RSRZ>	#RSRZ>2	OWAB(Å ²)	Q<0.9
1	A	299/300 (99%)	-0.18	3 (1%) 82 88	16, 34, 68, 119	0
1	B	300/300 (100%)	0.09	10 (3%) 46 59	24, 45, 80, 99	0
1	C	299/300 (99%)	0.19	9 (3%) 50 61	22, 45, 72, 118	0
All	All	898/900 (99%)	0.03	22 (2%) 59 68	16, 40, 75, 119	0

All (22) RSRZ outliers are listed below:

Mol	Chain	Res	Type	RSRZ
1	A	47	THR	6.8
1	C	244	SER	4.1
1	C	191	LEU	3.2
1	B	222	SER	3.0
1	C	50	LEU	3.0
1	B	248	TYR	2.8
1	B	246	GLU	2.8
1	A	191	LEU	2.8
1	B	245	VAL	2.7
1	B	253	ALA	2.7
1	B	249	SER	2.6
1	C	47	THR	2.5
1	B	244	SER	2.4
1	B	66	SER	2.4
1	C	235	MET	2.3
1	B	65	PHE	2.3
1	C	242	VAL	2.2
1	C	114	LEU	2.2
1	A	50	LEU	2.1
1	B	221	CYS	2.0
1	C	45	PRO	2.0
1	C	236	ALA	2.0

6.2 Non-standard residues in protein, DNA, RNA chains [i](#)

There are no non-standard protein/DNA/RNA residues in this entry.

6.3 Carbohydrates [i](#)

There are no monosaccharides in this entry.

6.4 Ligands [i](#)

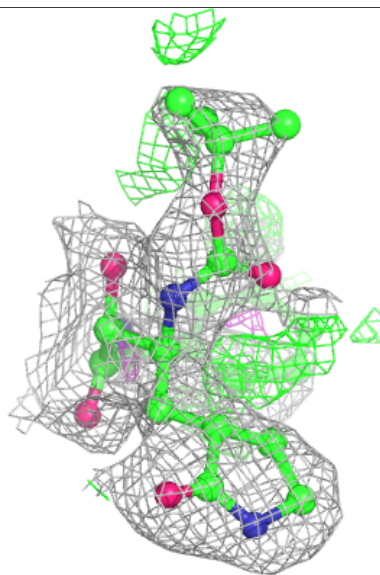
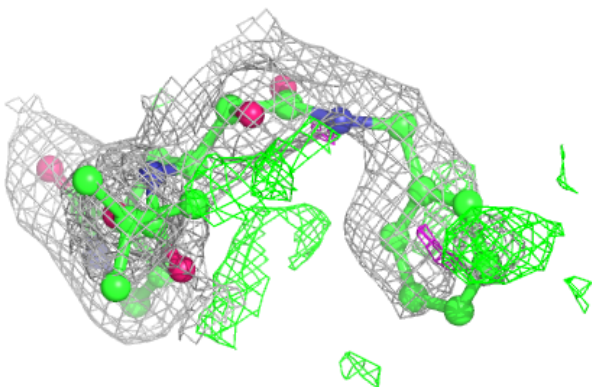
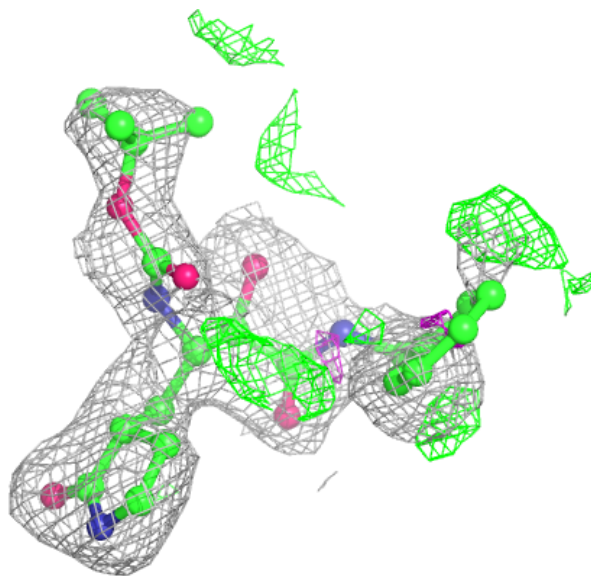
In the following table, the Atoms column lists the number of modelled atoms in the group and the number defined in the chemical component dictionary. The B-factors column lists the minimum, median, 95th percentile and maximum values of B factors of atoms in the group. The column labelled 'Q< 0.9' lists the number of atoms with occupancy less than 0.9.

Mol	Type	Chain	Res	Atoms	RSCC	RSR	B-factors(\AA^2)	Q<0.9
3	DMS	C	304	4/4	0.76	0.21	80,94,97,106	0
3	DMS	A	303	4/4	0.79	0.18	70,88,90,107	0
4	GOL	C	303	6/6	0.82	0.28	49,64,74,83	0
4	GOL	C	302	6/6	0.89	0.24	66,74,78,82	0
2	8X8	A	301	28/28	0.89	0.23	30,75,91,94	0
2	8X8	C	301	28/28	0.92	0.17	43,68,83,83	0
3	DMS	A	302	4/4	0.92	0.18	61,71,71,74	0
2	8X8	B	401	28/28	0.93	0.14	32,56,75,82	0

The following is a graphical depiction of the model fit to experimental electron density of all instances of the Ligand of Interest. In addition, ligands with molecular weight > 250 and outliers as shown on the geometry validation Tables will also be included. Each fit is shown from different orientation to approximate a three-dimensional view.

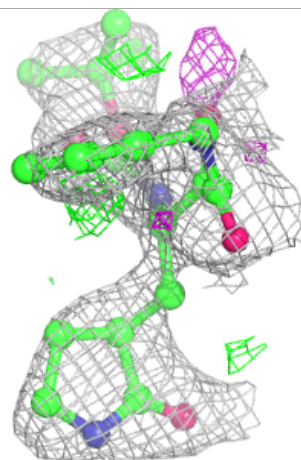
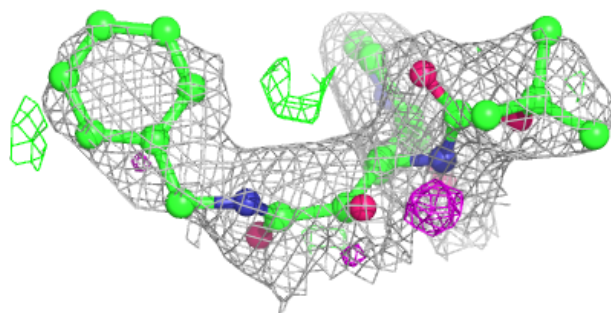
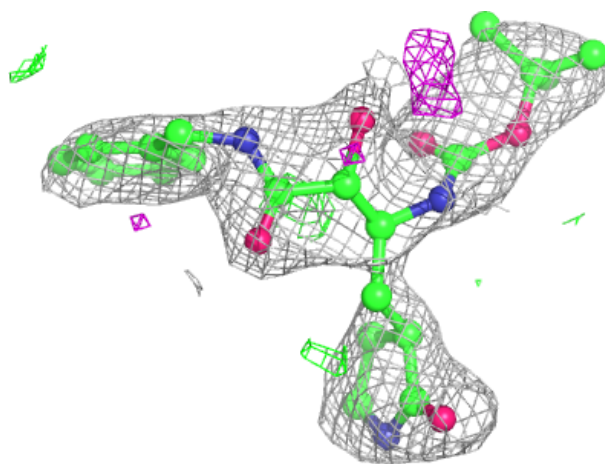
Electron density around 8X8 Å 301:

$2mF_o-DF_c$ (at 0.7 rmsd) in gray
 mF_o-DF_c (at 3 rmsd) in purple (negative)
and green (positive)



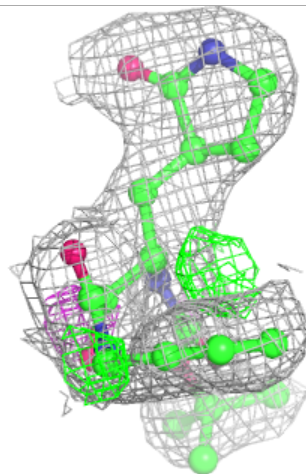
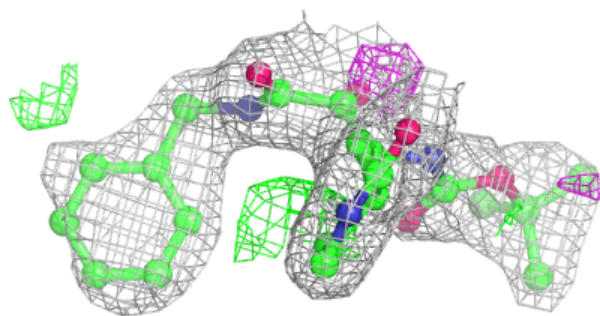
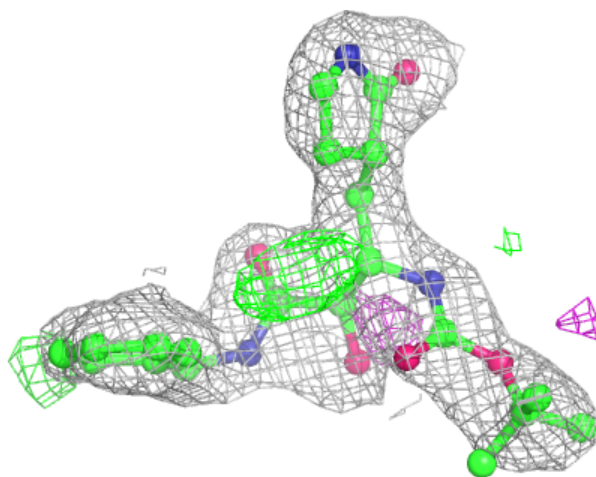
Electron density around 8X8 C 301:

$2mF_o-DF_c$ (at 0.7 rmsd) in gray
 mF_o-DF_c (at 3 rmsd) in purple (negative)
and green (positive)



Electron density around 8X8 B 401:

$2mF_o-DF_c$ (at 0.7 rmsd) in gray
 mF_o-DF_c (at 3 rmsd) in purple (negative)
and green (positive)



6.5 Other polymers [i](#)

There are no such residues in this entry.