



## Full wwPDB EM Validation Report ⓘ

Oct 13, 2024 – 12:09 am BST

PDB ID : 7NCS  
EMDB ID : EMD-12271  
Title : Lateral-open conformation of the lid-locked BAM complex (BamA E435C S665C, BamBDCE) bound by a bactericidal Fab fragment  
Authors : Haysom, S.F.; Machin, J.M.  
Deposited on : 2021-01-29  
Resolution : 7.10 Å (reported)  
Based on initial models : 7BM5, 7NBX

This is a Full wwPDB EM Validation Report for a publicly released PDB entry.

We welcome your comments at [validation@mail.wwpdb.org](mailto:validation@mail.wwpdb.org)

A user guide is available at

<https://www.wwpdb.org/validation/2017/EMValidationReportHelp>  
with specific help available everywhere you see the ⓘ symbol.

The types of validation reports are described at

<http://www.wwpdb.org/validation/2017/FAQs#types>.

---

The following versions of software and data (see [references ⓘ](#)) were used in the production of this report:

EMDB validation analysis : 0.0.1.dev113  
MolProbity : 4.02b-467  
Percentile statistics : 20231227.v01 (using entries in the PDB archive December 27th 2023)  
MapQ : 1.9.13  
Ideal geometry (proteins) : Engh & Huber (2001)  
Ideal geometry (DNA, RNA) : Parkinson et al. (1996)  
Validation Pipeline (wwPDB-VP) : 2.39

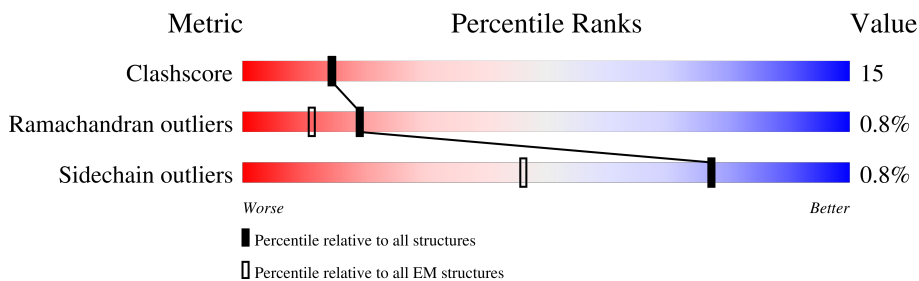
# 1 Overall quality at a glance

The following experimental techniques were used to determine the structure:

*ELECTRON MICROSCOPY*

The reported resolution of this entry is 7.10 Å.

Percentile scores (ranging between 0-100) for global validation metrics of the entry are shown in the following graphic. The table shows the number of entries on which the scores are based.



Metric	Whole archive (#Entries)	EM structures (#Entries)
Clashscore	210492	15764
Ramachandran outliers	207382	16835
Sidechain outliers	206894	16415

The table below summarises the geometric issues observed across the polymeric chains and their fit to the map. The red, orange, yellow and green segments of the bar indicate the fraction of residues that contain outliers for  $\geq 3$ , 2, 1 and 0 types of geometric quality criteria respectively. A grey segment represents the fraction of residues that are not modelled. The numeric value for each fraction is indicated below the corresponding segment, with a dot representing fractions  $\leq 5\%$ . The upper red bar (where present) indicates the fraction of residues that have poor fit to the EM map (all-atom inclusion  $< 40\%$ ). The numeric value is given above the bar.

Mol	Chain	Length	Quality of chain
1	A	810	
2	B	392	
3	C	344	
4	D	245	
5	E	123	
6	H	228	
7	L	215	

## 2 Entry composition [i](#)

There are 7 unique types of molecules in this entry. The entry contains 29189 atoms, of which 14353 are hydrogens and 0 are deuteriums.

In the tables below, the AltConf column contains the number of residues with at least one atom in alternate conformation and the Trace column contains the number of residues modelled with at most 2 atoms.

- Molecule 1 is a protein called Outer membrane protein assembly factor BamA.

Mol	Chain	Residues	Atoms						AltConf	Trace
1	A	761	Total	C	H	N	O	S	0	0
			11777	3804	5756	1016	1185	16		

There are 4 discrepancies between the modelled and reference sequences:

Chain	Residue	Modelled	Actual	Comment	Reference
A	435	CYS	GLU	engineered mutation	UNP P0A940
A	665	CYS	SER	engineered mutation	UNP P0A940
A	690	SER	CYS	engineered mutation	UNP P0A940
A	700	SER	CYS	engineered mutation	UNP P0A940

- Molecule 2 is a protein called Outer membrane protein assembly factor BamB.

Mol	Chain	Residues	Atoms						AltConf	Trace
2	B	357	Total	C	H	N	O	S	0	0
			5302	1676	2628	459	533	6		

- Molecule 3 is a protein called Outer membrane protein assembly factor BamC.

Mol	Chain	Residues	Atoms						AltConf	Trace
3	C	56	Total	C	H	N	O	S	0	0
			816	258	408	71	78	1		

- Molecule 4 is a protein called Outer membrane protein assembly factor BamD.

Mol	Chain	Residues	Atoms						AltConf	Trace
4	D	218	Total	C	H	N	O	S	0	0
			3457	1108	1697	310	335	7		

- Molecule 5 is a protein called Outer membrane protein assembly factor BamE.

Mol	Chain	Residues	Atoms						AltConf	Trace
5	E	83	Total	C	H	N	O	S	0	0
			1269	405	624	112	126	2		

There are 10 discrepancies between the modelled and reference sequences:

Chain	Residue	Modelled	Actual	Comment	Reference
E	114	GLY	-	expression tag	UNP P0A937
E	115	GLY	-	expression tag	UNP P0A937
E	116	HIS	-	expression tag	UNP P0A937
E	117	HIS	-	expression tag	UNP P0A937
E	118	HIS	-	expression tag	UNP P0A937
E	119	HIS	-	expression tag	UNP P0A937
E	120	HIS	-	expression tag	UNP P0A937
E	121	HIS	-	expression tag	UNP P0A937
E	122	HIS	-	expression tag	UNP P0A937
E	123	HIS	-	expression tag	UNP P0A937

- Molecule 6 is a protein called Fab1 heavy chain.

Mol	Chain	Residues	Atoms						AltConf	Trace
6	H	221	Total	C	H	N	O	S	0	0
			3304	1056	1639	282	319	8		

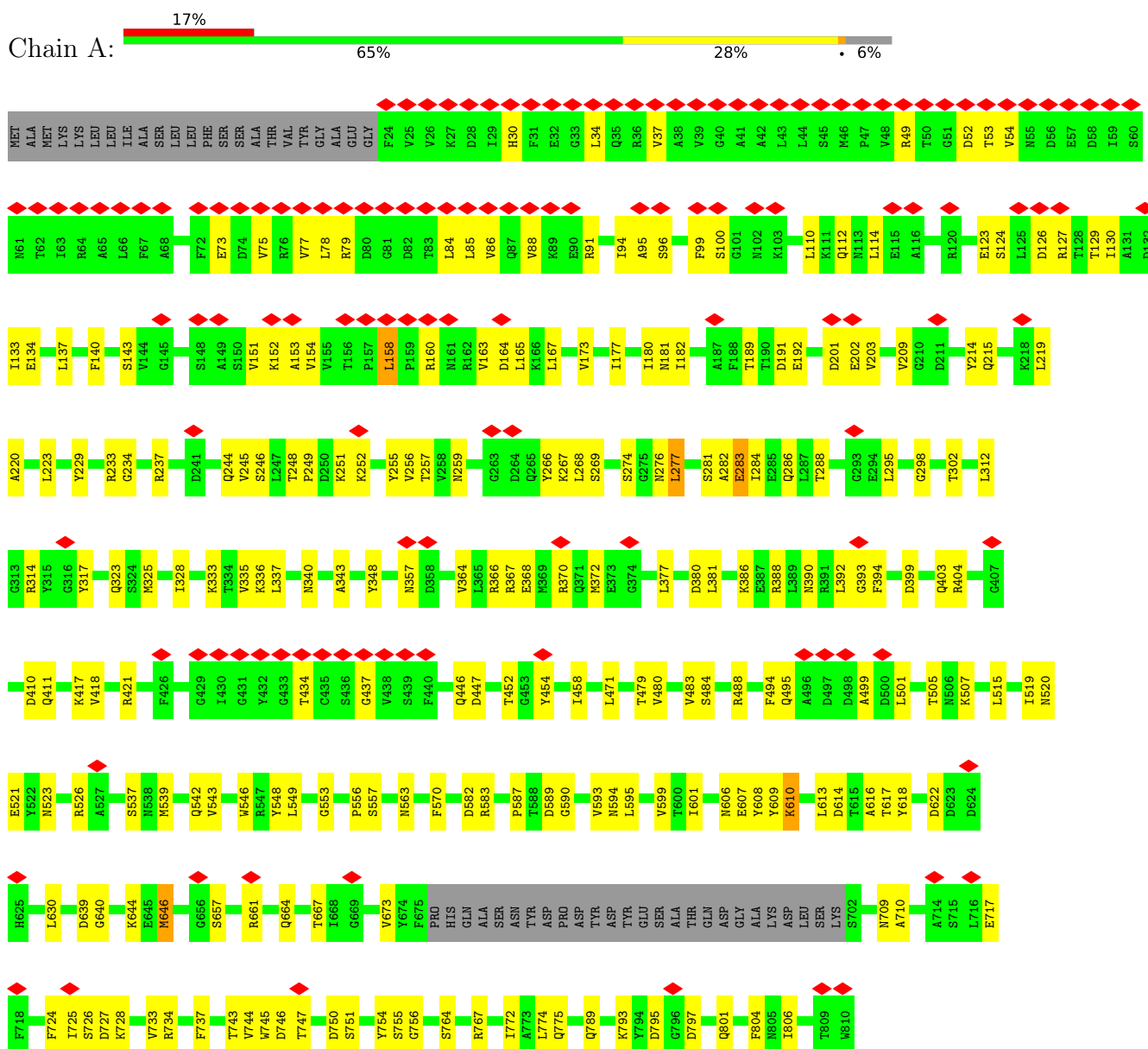
- Molecule 7 is a protein called Fab1 light chain.

Mol	Chain	Residues	Atoms						AltConf	Trace
7	L	215	Total	C	H	N	O	S	0	0
			3264	1040	1601	281	336	6		

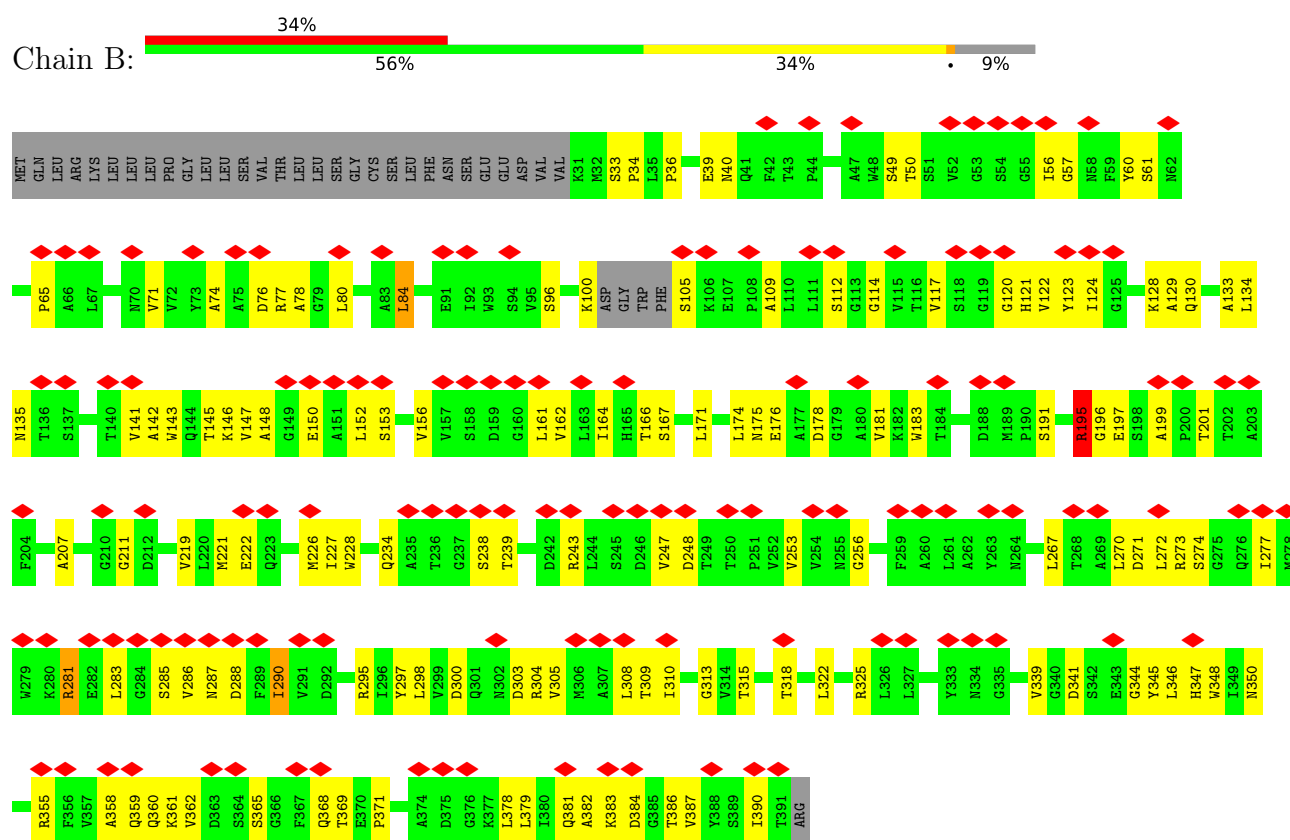
### 3 Residue-property plots

These plots are drawn for all protein, RNA, DNA and oligosaccharide chains in the entry. The first graphic for a chain summarises the proportions of the various outlier classes displayed in the second graphic. The second graphic shows the sequence view annotated by issues in geometry and atom inclusion in map density. Residues are color-coded according to the number of geometric quality criteria for which they contain at least one outlier: green = 0, yellow = 1, orange = 2 and red = 3 or more. A red diamond above a residue indicates a poor fit to the EM map for this residue (all-atom inclusion < 40%). Stretches of 2 or more consecutive residues without any outlier are shown as a green connector. Residues present in the sample, but not in the model, are shown in grey.

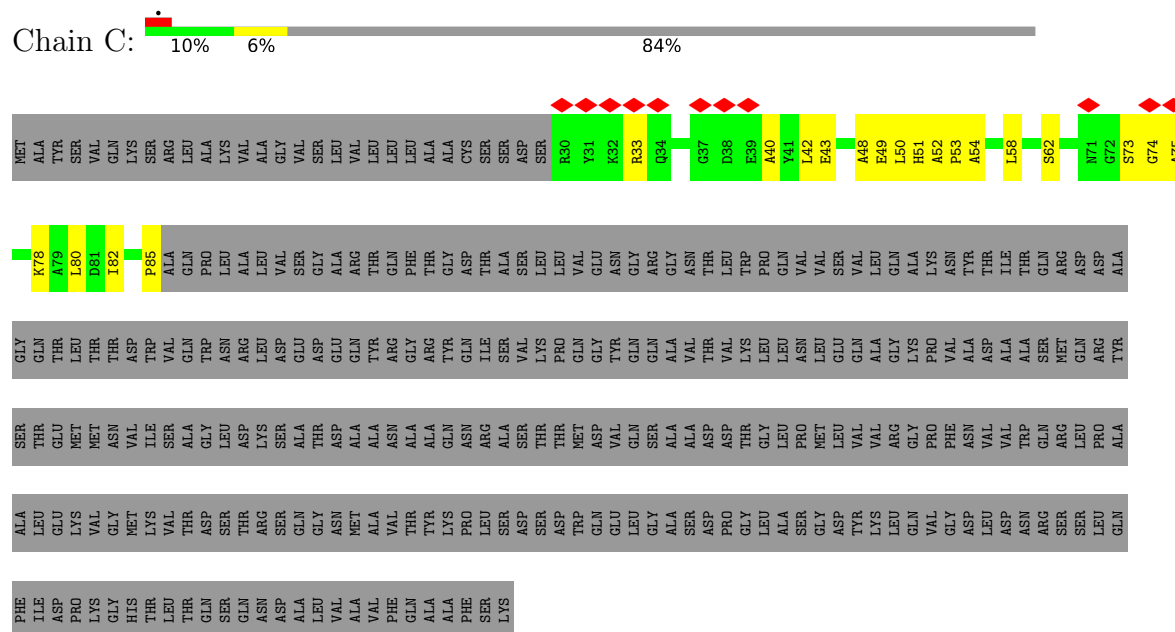
- Molecule 1: Outer membrane protein assembly factor BamA



- Molecule 2: Outer membrane protein assembly factor BamB

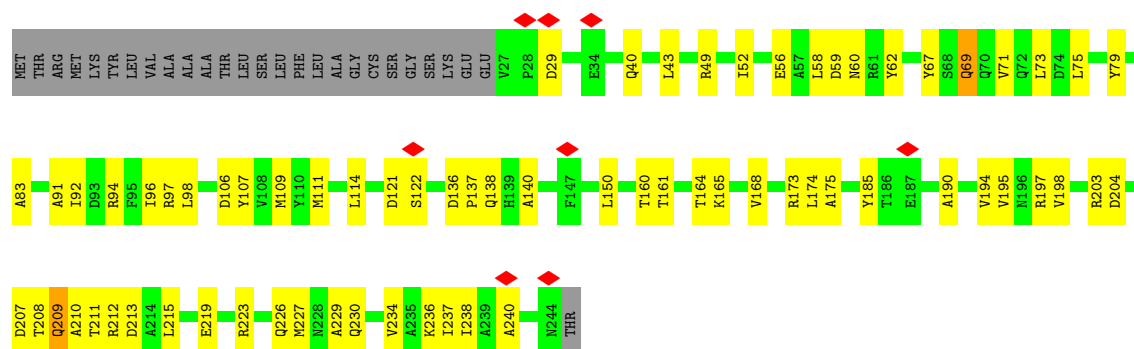


- Molecule 3: Outer membrane protein assembly factor BamC

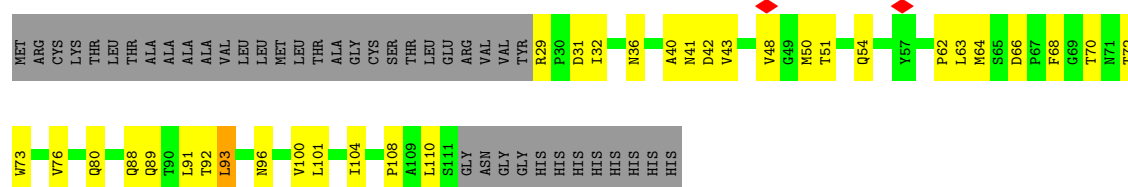


- Molecule 4: Outer membrane protein assembly factor BamD

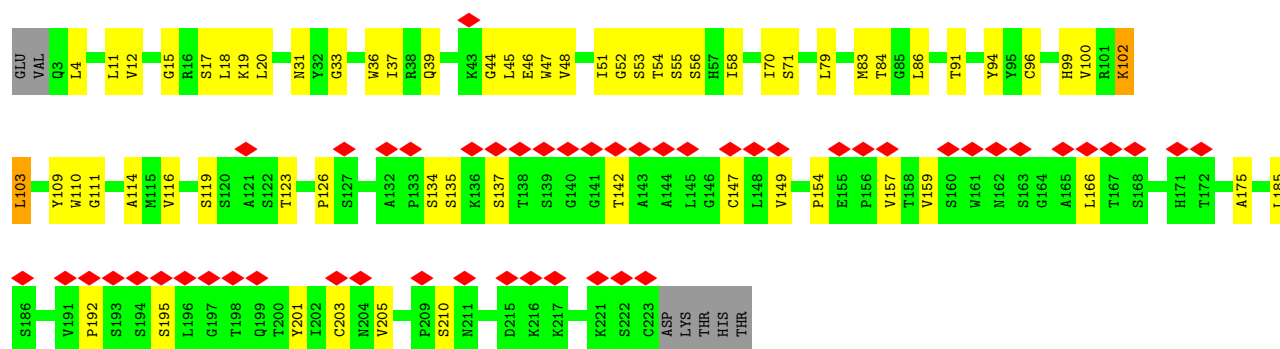




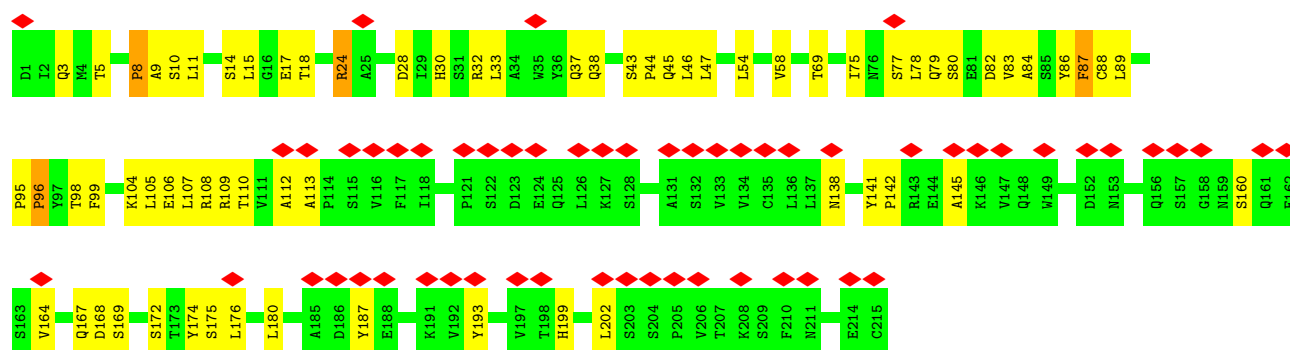
• Molecule 5: Outer membrane protein assembly factor BamE



• Molecule 6: Fab1 heavy chain



• Molecule 7: Fab1 light chain



## 4 Experimental information

Property	Value	Source
EM reconstruction method	SINGLE PARTICLE	Depositor
Imposed symmetry	POINT, Not provided	
Number of particles used	61777	Depositor
Resolution determination method	FSC 0.143 CUT-OFF	Depositor
CTF correction method	PHASE FLIPPING AND AMPLITUDE CORRECTION	Depositor
Microscope	FEI TITAN KRIOS	Depositor
Voltage (kV)	300	Depositor
Electron dose ( $e^-/\text{\AA}^2$ )	49.1	Depositor
Minimum defocus (nm)	1000	Depositor
Maximum defocus (nm)	2500	Depositor
Magnification	130000	Depositor
Image detector	GATAN K2 SUMMIT (4k x 4k)	Depositor
Maximum map value	1.038	Depositor
Minimum map value	-0.488	Depositor
Average map value	0.004	Depositor
Map value standard deviation	0.035	Depositor
Recommended contour level	0.294	Depositor
Map size (Å)	321.00003, 321.00003, 321.00003	wwPDB
Map dimensions	300, 300, 300	wwPDB
Map angles (°)	90.0, 90.0, 90.0	wwPDB
Pixel spacing (Å)	1.07, 1.07, 1.07	Depositor



## 5 Model quality

### 5.1 Standard geometry

The Z score for a bond length (or angle) is the number of standard deviations the observed value is removed from the expected value. A bond length (or angle) with  $|Z| > 5$  is considered an outlier worth inspection. RMSZ is the root-mean-square of all Z scores of the bond lengths (or angles).

Mol	Chain	Bond lengths		Bond angles	
		RMSZ	$\# Z  > 5$	RMSZ	$\# Z  > 5$
1	A	0.57	0/6159	0.85	6/8352 (0.1%)
2	B	0.48	0/2720	0.84	2/3708 (0.1%)
3	C	0.48	0/417	0.86	0/569
4	D	0.55	0/1800	0.83	1/2446 (0.0%)
5	E	0.62	0/659	0.86	0/899
6	H	0.59	0/1706	1.02	5/2319 (0.2%)
7	L	0.57	0/1700	0.93	3/2306 (0.1%)
All	All	0.55	0/15161	0.87	17/20599 (0.1%)

Chiral center outliers are detected by calculating the chiral volume of a chiral center and verifying if the center is modelled as a planar moiety or with the opposite hand. A planarity outlier is detected by checking planarity of atoms in a peptide group, atoms in a mainchain group or atoms of a sidechain that are expected to be planar.

Mol	Chain	#Chirality outliers	#Planarity outliers
1	A	0	1
2	B	0	4
All	All	0	5

There are no bond length outliers.

All (17) bond angle outliers are listed below:

Mol	Chain	Res	Type	Atoms	Z	Observed(°)	Ideal(°)
6	H	103	LEU	CB-CG-CD1	7.61	123.93	111.00
6	H	100	VAL	CG1-CB-CG2	7.35	122.66	110.90
1	A	646	MET	CA-CB-CG	7.15	125.46	113.30
1	A	488	ARG	NE-CZ-NH1	6.17	123.39	120.30
6	H	203	CYS	CA-CB-SG	5.95	124.71	114.00
1	A	553	GLY	N-CA-C	5.73	127.43	113.10
4	D	174	LEU	CA-CB-CG	5.58	128.14	115.30
1	A	314	ARG	NE-CZ-NH1	5.54	123.07	120.30
1	A	277	LEU	CA-CB-CG	5.50	127.95	115.30

*Continued on next page...*

Continued from previous page...

Mol	Chain	Res	Type	Atoms	Z	Observed(°)	Ideal(°)
7	L	24	ARG	NE-CZ-NH1	5.49	123.04	120.30
6	H	103	LEU	CB-CG-CD2	5.31	120.03	111.00
1	A	158	LEU	CA-CB-CG	5.16	127.16	115.30
6	H	31	ASN	N-CA-C	-5.13	97.14	111.00
2	B	195	ARG	NE-CZ-NH1	-5.12	117.74	120.30
7	L	24	ARG	NE-CZ-NH2	-5.08	117.76	120.30
2	B	195	ARG	N-CA-C	-5.05	97.37	111.00
7	L	87	PHE	CB-CG-CD2	5.03	124.32	120.80

There are no chirality outliers.

All (5) planarity outliers are listed below:

Mol	Chain	Res	Type	Group
1	A	557	SER	Peptide
2	B	152	LEU	Peptide
2	B	290	ILE	Peptide
2	B	371	PRO	Peptide
2	B	84	LEU	Mainchain

## 5.2 Too-close contacts ⓘ

In the following table, the Non-H and H(model) columns list the number of non-hydrogen atoms and hydrogen atoms in the chain respectively. The H(added) column lists the number of hydrogen atoms added and optimized by MolProbity. The Clashes column lists the number of clashes within the asymmetric unit, whereas Symm-Clashes lists symmetry-related clashes.

Mol	Chain	Non-H	H(model)	H(added)	Clashes	Symm-Clashes
1	A	6021	5756	5763	164	0
2	B	2674	2628	2633	96	0
3	C	408	408	409	19	0
4	D	1760	1697	1699	52	0
5	E	645	624	625	29	0
6	H	1665	1639	1643	44	0
7	L	1663	1601	1605	51	0
All	All	14836	14353	14377	436	0

The all-atom clashscore is defined as the number of clashes found per 1000 atoms (including hydrogen atoms). The all-atom clashscore for this structure is 15.

All (436) close contacts within the same asymmetric unit are listed below, sorted by their clash magnitude.

Atom-1	Atom-2	Interatomic distance (Å)	Clash overlap (Å)
1:A:543:VAL:HB	1:A:673:VAL:HG13	1.57	0.85
2:B:117:VAL:HG12	2:B:122:VAL:HG12	1.56	0.85
2:B:109:ALA:O	2:B:128:LYS:NZ	2.10	0.85
1:A:616:ALA:HB1	1:A:630:LEU:HD11	1.61	0.82
1:A:49:ARG:NH1	1:A:53:THR:O	2.12	0.82
1:A:283:GLU:N	1:A:283:GLU:OE1	2.13	0.81
7:L:82:ASP:O	7:L:86:TYR:OH	1.99	0.81
2:B:49:SER:OG	2:B:387:VAL:O	1.97	0.80
7:L:10:SER:OG	7:L:104:LYS:O	2.00	0.80
1:A:403:GLN:NE2	1:A:404:ARG:O	2.15	0.79
1:A:751:SER:O	1:A:755:SER:OG	2.00	0.79
1:A:368:GLU:OE1	1:A:388:ARG:NH1	2.15	0.79
7:L:109:ARG:NH1	7:L:110:THR:O	2.16	0.78
4:D:223:ARG:O	4:D:226:GLN:NE2	2.16	0.78
1:A:189:THR:OG1	1:A:191:ASP:OD1	2.02	0.78
7:L:30:HIS:O	7:L:32:ARG:NH1	2.17	0.76
5:E:72:THR:OG1	5:E:93:LEU:O	2.03	0.76
2:B:120:GLY:O	2:B:135:ASN:ND2	2.19	0.76
7:L:37:GLN:HB3	7:L:47:LEU:HD21	1.68	0.76
7:L:18:THR:OG1	7:L:75:ILE:O	2.04	0.75
2:B:346:LEU:O	2:B:359:GLN:NE2	2.19	0.75
1:A:245:VAL:HG13	1:A:256:VAL:HG22	1.67	0.75
3:C:75:ALA:O	4:D:161:THR:OG1	2.06	0.73
1:A:519:ILE:O	5:E:29:ARG:N	2.22	0.73
2:B:305:VAL:O	2:B:318:THR:OG1	2.04	0.73
4:D:194:VAL:O	4:D:198:VAL:HG23	1.88	0.73
5:E:64:MET:SD	5:E:64:MET:N	2.62	0.72
7:L:138:ASN:O	7:L:175:SER:OG	2.05	0.72
2:B:130:GLN:OE1	2:B:146:LYS:NZ	2.19	0.71
5:E:91:LEU:HG	5:E:93:LEU:HD11	1.73	0.71
3:C:62:SER:OG	4:D:204:ASP:OD1	2.08	0.71
2:B:290:ILE:HG23	2:B:297:TYR:HB2	1.73	0.70
4:D:207:ASP:O	4:D:211:THR:OG1	2.09	0.70
7:L:167:GLN:NE2	7:L:172:SER:OG	2.25	0.70
4:D:138:GLN:N	4:D:138:GLN:OE1	2.24	0.69
4:D:40:GLN:HA	4:D:43:LEU:HD12	1.74	0.69
1:A:546:TRP:HA	1:A:549:LEU:HD23	1.74	0.69
1:A:542:GLN:O	1:A:546:TRP:NE1	2.25	0.69
1:A:366:ARG:NH1	4:D:185:TYR:OH	2.25	0.69
1:A:34:LEU:HD12	1:A:37:VAL:HG13	1.74	0.69
1:A:152:LYS:NZ	1:A:153:ALA:O	2.24	0.69
7:L:106:GLU:OE2	7:L:174:TYR:OH	2.10	0.68

Continued on next page...

*Continued from previous page...*

Atom-1	Atom-2	Interatomic distance (Å)	Clash overlap (Å)
2:B:219:VAL:HG12	2:B:226:MET:HA	1.73	0.68
1:A:282:ALA:O	1:A:286:GLN:NE2	2.27	0.68
5:E:48:VAL:HA	5:E:101:LEU:HD13	1.76	0.67
6:H:71:SER:O	6:H:79:LEU:HD12	1.94	0.67
2:B:129:ALA:HB1	2:B:147:VAL:O	1.95	0.67
1:A:410:ASP:OD1	1:A:411:GLN:NE2	2.27	0.67
2:B:134:LEU:HD23	2:B:141:VAL:HA	1.77	0.67
7:L:54:LEU:HD21	7:L:58:VAL:HG13	1.77	0.66
2:B:271:ASP:OD1	2:B:274:SER:N	2.28	0.66
7:L:113:ALA:HB1	7:L:202:LEU:HD23	1.77	0.66
1:A:599:VAL:HG23	1:A:609:TYR:HB3	1.77	0.66
7:L:89:LEU:HD12	7:L:98:THR:O	1.94	0.66
4:D:161:THR:O	4:D:165:LYS:NZ	2.27	0.66
4:D:49:ARG:HA	4:D:52:ILE:HD12	1.78	0.66
6:H:36:TRP:O	6:H:48:VAL:HG22	1.96	0.65
2:B:256:GLY:HA2	2:B:272:LEU:HD12	1.78	0.65
1:A:134:GLU:HA	1:A:137:LEU:HD12	1.79	0.65
1:A:229:TYR:O	1:A:233:ARG:NH1	2.29	0.65
2:B:281:ARG:HD3	2:B:283:LEU:HD11	1.78	0.65
4:D:175:ALA:CB	4:D:208:THR:HG21	2.27	0.64
2:B:253:VAL:CG2	2:B:272:LEU:HD11	2.28	0.64
7:L:107:LEU:O	7:L:141:TYR:OH	2.14	0.64
1:A:140:PHE:O	1:A:143:SER:OG	2.13	0.64
4:D:227:MET:SD	4:D:229:ALA:N	2.71	0.64
2:B:33:SER:OG	2:B:325:ARG:NE	2.27	0.63
7:L:37:GLN:CB	7:L:47:LEU:HD21	2.27	0.63
2:B:256:GLY:CA	2:B:272:LEU:HD12	2.29	0.63
7:L:77:SER:O	7:L:79:GLN:NE2	2.29	0.62
4:D:160:THR:O	4:D:164:THR:HG23	1.99	0.62
5:E:36:ASN:N	5:E:76:VAL:O	2.32	0.62
2:B:65:PRO:HB3	2:B:74:ALA:HB2	1.82	0.62
1:A:593:VAL:CG1	1:A:613:LEU:HD11	2.30	0.62
3:C:42:LEU:N	3:C:43:GLU:OE1	2.33	0.62
1:A:582:ASP:OD2	1:A:589:ASP:N	2.33	0.62
4:D:185:TYR:HB3	4:D:190:ALA:HB3	1.82	0.62
1:A:386:LYS:O	1:A:390:ASN:ND2	2.32	0.62
6:H:126:PRO:HB2	6:H:149:VAL:HG13	1.82	0.61
7:L:167:GLN:NE2	7:L:172:SER:O	2.33	0.61
1:A:539:MET:O	1:A:563:ASN:ND2	2.33	0.61
2:B:60:TYR:O	2:B:77:ARG:NH2	2.32	0.61
6:H:70:ILE:CG1	6:H:79:LEU:HD11	2.30	0.61

*Continued on next page...*

*Continued from previous page...*

Atom-1	Atom-2	Interatomic distance (Å)	Clash overlap (Å)
2:B:360:GLN:NE2	2:B:361:LYS:O	2.33	0.61
2:B:148:ALA:O	2:B:166:THR:HG21	2.01	0.60
1:A:298:GLY:O	1:A:302:THR:HG23	2.02	0.60
1:A:458:ILE:HG22	1:A:471:LEU:HD23	1.82	0.59
4:D:209:GLN:O	4:D:213:ASP:N	2.34	0.59
3:C:43:GLU:OE1	3:C:43:GLU:N	2.35	0.59
5:E:40:ALA:N	5:E:42:ASP:OD2	2.34	0.59
6:H:4:LEU:HD13	6:H:109:TYR:CE2	2.38	0.59
7:L:164:VAL:HG22	7:L:176:LEU:HD12	1.83	0.59
6:H:70:ILE:HG13	6:H:79:LEU:HD11	1.84	0.59
2:B:341:ASP:OD1	2:B:344:GLY:N	2.36	0.59
2:B:57:GLY:O	2:B:383:LYS:NZ	2.30	0.59
2:B:346:LEU:HD21	2:B:362:VAL:HG11	1.86	0.58
1:A:73:GLU:OE1	1:A:127:ARG:NH2	2.36	0.58
2:B:166:THR:OG1	2:B:167:SER:N	2.35	0.58
1:A:357:ASN:O	4:D:136:ASP:N	2.36	0.58
2:B:174:LEU:CD2	2:B:181:VAL:HG22	2.34	0.58
2:B:161:LEU:HD23	2:B:176:GLU:OE2	2.03	0.57
7:L:43:SER:OG	7:L:45:GLN:OE1	2.22	0.57
2:B:150:GLU:O	2:B:166:THR:OG1	2.09	0.57
1:A:393:GLY:O	1:A:421:ARG:NH1	2.36	0.57
4:D:97:ARG:NH1	4:D:98:LEU:HD21	2.19	0.57
4:D:79:TYR:O	4:D:83:ALA:N	2.37	0.57
2:B:183:TRP:NE1	2:B:222:GLU:O	2.38	0.57
1:A:364:VAL:O	1:A:367:ARG:NE	2.38	0.57
7:L:145:ALA:HB2	7:L:199:HIS:HD2	1.69	0.57
1:A:137:LEU:HD13	1:A:151:VAL:HG21	1.87	0.57
6:H:142:THR:HG22	6:H:192:PRO:HA	1.87	0.56
2:B:133:ALA:O	2:B:142:ALA:N	2.36	0.56
6:H:51:ILE:HD11	6:H:55:SER:HA	1.87	0.56
7:L:33:LEU:HD11	7:L:88:CYS:HB2	1.88	0.56
2:B:71:VAL:HG23	2:B:84:LEU:O	2.06	0.56
4:D:121:ASP:OD2	4:D:122:SER:N	2.38	0.56
5:E:51:THR:HG23	5:E:54:GLN:H	1.71	0.56
1:A:570:PHE:HB2	1:A:601:ILE:HD11	1.86	0.56
2:B:34:PRO:O	2:B:325:ARG:NH2	2.39	0.56
1:A:130:ILE:HA	1:A:133:ILE:HD12	1.87	0.56
1:A:399:ASP:O	1:A:417:LYS:N	2.38	0.55
2:B:339:VAL:HG23	2:B:347:HIS:HD2	1.71	0.55
7:L:83:VAL:HA	7:L:105:LEU:HD23	1.87	0.55
1:A:724:PHE:O	1:A:725:ILE:HD13	2.06	0.55

*Continued on next page...*

*Continued from previous page...*

Atom-1	Atom-2	Interatomic distance (Å)	Clash overlap (Å)
3:C:52:ALA:HB1	3:C:53:PRO:HD2	1.87	0.55
3:C:54:ALA:O	4:D:236:LYS:NZ	2.27	0.55
2:B:234:GLN:N	2:B:234:GLN:OE1	2.39	0.55
5:E:88:GLN:H	5:E:110:LEU:HD22	1.71	0.55
6:H:102:LYS:C	6:H:103:LEU:HD12	2.26	0.55
1:A:77:VAL:HG12	1:A:86:VAL:HG13	1.87	0.55
1:A:214:TYR:O	1:A:215:GLN:NE2	2.40	0.55
1:A:480:VAL:O	1:A:483:VAL:HG23	2.07	0.55
5:E:92:THR:C	5:E:93:LEU:HD12	2.28	0.54
5:E:62:PRO:O	5:E:63:LEU:HD23	2.07	0.54
2:B:281:ARG:CD	2:B:283:LEU:HD11	2.37	0.54
7:L:145:ALA:HB2	7:L:199:HIS:CD2	2.42	0.54
6:H:52:GLY:O	6:H:53:SER:OG	2.24	0.54
1:A:570:PHE:CB	1:A:601:ILE:HD11	2.38	0.53
1:A:587:PRO:O	1:A:734:ARG:NH2	2.41	0.53
1:A:542:GLN:NE2	1:A:673:VAL:HG12	2.22	0.53
2:B:308:LEU:HD23	2:B:315:THR:HA	1.91	0.53
2:B:227:ILE:HG22	2:B:228:TRP:CD1	2.43	0.53
7:L:187:TYR:O	7:L:193:TYR:OH	2.20	0.53
1:A:249:PRO:O	1:A:251:LYS:NZ	2.39	0.53
1:A:392:LEU:HD13	1:A:394:PHE:CE2	2.44	0.53
4:D:234:VAL:HG12	4:D:238:ILE:HD11	1.90	0.53
1:A:789:GLN:NE2	1:A:801:GLN:OE1	2.42	0.53
4:D:234:VAL:HG12	4:D:238:ILE:CD1	2.39	0.53
6:H:137:SER:O	6:H:137:SER:OG	2.27	0.53
1:A:323:GLN:N	1:A:323:GLN:OE1	2.42	0.53
2:B:207:ALA:HB2	2:B:221:MET:CG	2.39	0.53
1:A:281:SER:HA	1:A:284:ILE:HD11	1.90	0.52
2:B:381:GLN:OE1	2:B:386:THR:N	2.41	0.52
4:D:164:THR:O	4:D:168:VAL:HG23	2.09	0.52
1:A:177:ILE:HG22	1:A:201:ASP:OD1	2.09	0.52
1:A:269:SER:N	1:A:335:VAL:O	2.40	0.52
2:B:61:SER:OG	2:B:77:ARG:NH2	2.35	0.52
4:D:227:MET:SD	4:D:230:GLN:N	2.81	0.52
7:L:37:GLN:HB2	7:L:47:LEU:HD11	1.91	0.52
1:A:750:ASP:OD1	1:A:750:ASP:N	2.41	0.52
1:A:797:ASP:N	1:A:797:ASP:OD1	2.42	0.52
5:E:31:ASP:OD2	5:E:32:ILE:N	2.43	0.52
7:L:37:GLN:HG3	7:L:84:ALA:HB3	1.92	0.52
4:D:92:ILE:O	4:D:96:ILE:HG22	2.09	0.52
6:H:123:THR:HG23	6:H:154:PRO:CD	2.39	0.52

*Continued on next page...*

*Continued from previous page...*

Atom-1	Atom-2	Interatomic distance (Å)	Clash overlap (Å)
1:A:276:ASN:ND2	1:A:343:ALA:O	2.41	0.52
1:A:75:VAL:HG12	1:A:88:VAL:HG23	1.91	0.52
1:A:539:MET:SD	1:A:539:MET:N	2.83	0.52
1:A:234:GLY:HA3	1:A:295:LEU:HD11	1.92	0.51
2:B:80:LEU:HD23	2:B:96:SER:HB2	1.91	0.51
3:C:82:ILE:O	4:D:107:TYR:OH	2.25	0.51
1:A:99:PHE:CD1	1:A:167:LEU:HD12	2.45	0.51
1:A:618:TYR:CD1	1:A:630:LEU:HD13	2.45	0.51
1:A:548:TYR:OH	1:A:606:ASN:ND2	2.44	0.51
6:H:37:ILE:HG23	6:H:46:GLU:O	2.10	0.51
2:B:156:VAL:O	2:B:162:VAL:HG23	2.10	0.51
1:A:219:LEU:CD1	1:A:223:LEU:HD11	2.41	0.51
4:D:109:MET:HB2	4:D:150:LEU:HD13	1.93	0.51
1:A:181:ASN:O	1:A:257:THR:HG23	2.10	0.51
1:A:248:THR:OG1	1:A:251:LYS:N	2.44	0.51
1:A:446:GLN:OE1	1:A:447:ASP:N	2.44	0.51
1:A:589:ASP:OD1	1:A:590:GLY:N	2.44	0.51
1:A:733:VAL:CG2	1:A:774:LEU:HD11	2.41	0.51
2:B:308:LEU:HD22	2:B:313:GLY:O	2.11	0.51
1:A:323:GLN:NE2	1:A:340:ASN:OD1	2.45	0.50
2:B:196:GLY:HA3	2:B:247:VAL:HG12	1.93	0.50
7:L:109:ARG:NH1	7:L:112:ALA:HB2	2.26	0.50
6:H:18:LEU:HD21	6:H:20:LEU:HD21	1.94	0.50
7:L:160:SER:OG	7:L:180:LEU:HD13	2.11	0.50
3:C:74:GLY:H	4:D:161:THR:HG21	1.76	0.50
5:E:66:ASP:OD2	5:E:68:PHE:N	2.45	0.50
5:E:93:LEU:HD23	5:E:104:ILE:HG22	1.92	0.50
1:A:154:VAL:O	1:A:165:LEU:HD12	2.11	0.50
1:A:664:GLN:CB	1:A:667:THR:HG21	2.41	0.50
2:B:56:ILE:HG22	2:B:77:ARG:H	1.77	0.50
3:C:58:LEU:HD23	3:C:58:LEU:H	1.77	0.50
3:C:85:PRO:HD2	4:D:73:LEU:HD13	1.93	0.50
1:A:595:LEU:HB2	1:A:613:LEU:HD13	1.92	0.50
5:E:41:ASN:OD1	5:E:42:ASP:N	2.45	0.50
1:A:452:THR:HG21	1:A:454:TYR:CD2	2.47	0.49
1:A:582:ASP:OD1	1:A:583:ARG:N	2.45	0.49
6:H:175:ALA:HB2	6:H:185:LEU:HD23	1.94	0.49
1:A:608:TYR:HA	1:A:640:GLY:HA2	1.94	0.49
2:B:253:VAL:HG23	2:B:272:LEU:HD11	1.94	0.49
2:B:345:TYR:O	2:B:346:LEU:HD23	2.12	0.49
4:D:69:GLN:OE1	4:D:69:GLN:N	2.36	0.49

*Continued on next page...*



*Continued from previous page...*

Atom-1	Atom-2	Interatomic distance (Å)	Clash overlap (Å)
7:L:28:ASP:OD1	7:L:69:THR:OG1	2.23	0.49
1:A:91:ARG:HB2	1:A:124:SER:HB3	1.95	0.49
1:A:499:ALA:HB3	1:A:501:LEU:CD1	2.42	0.49
5:E:88:GLN:N	5:E:110:LEU:HD22	2.27	0.49
1:A:613:LEU:HD12	1:A:614:ASP:H	1.77	0.49
6:H:33:GLY:O	6:H:99:HIS:ND1	2.39	0.49
1:A:710:ALA:HB3	1:A:745:TRP:O	2.13	0.49
1:A:804:PHE:HD2	1:A:806:ILE:HD11	1.78	0.49
1:A:743:THR:HG22	1:A:744:VAL:H	1.77	0.49
1:A:94:ILE:HD11	1:A:96:SER:O	2.12	0.49
1:A:246:SER:OG	2:B:195:ARG:HD3	2.13	0.49
1:A:505:THR:OG1	1:A:537:SER:OG	2.16	0.49
1:A:593:VAL:HG12	1:A:613:LEU:HD11	1.94	0.49
2:B:56:ILE:HG22	2:B:77:ARG:HG2	1.95	0.49
6:H:55:SER:O	6:H:58:ILE:HD11	2.13	0.49
7:L:113:ALA:HB1	7:L:202:LEU:CD2	2.42	0.49
2:B:153:SER:OG	2:B:197:GLU:OE1	2.28	0.48
4:D:207:ASP:OD2	4:D:207:ASP:N	2.45	0.48
2:B:346:LEU:HD12	2:B:360:GLN:HB3	1.95	0.48
6:H:96:CYS:O	6:H:111:GLY:N	2.45	0.48
1:A:160:ARG:NH1	4:D:62:TYR:OH	2.46	0.48
1:A:234:GLY:CA	1:A:295:LEU:HD11	2.43	0.48
2:B:267:LEU:HD23	2:B:283:LEU:HD12	1.95	0.48
2:B:191:SER:OG	2:B:243:ARG:NH2	2.43	0.48
2:B:270:LEU:HD23	2:B:277:ILE:HA	1.96	0.48
2:B:281:ARG:NE	2:B:313:GLY:O	2.44	0.48
2:B:114:GLY:O	2:B:124:ILE:HG23	2.13	0.48
4:D:175:ALA:HB1	4:D:208:THR:HG21	1.94	0.48
5:E:42:ASP:OD2	5:E:42:ASP:N	2.47	0.48
6:H:94:TYR:O	6:H:114:ALA:N	2.41	0.48
6:H:91:THR:HA	6:H:116:VAL:HG23	1.94	0.48
7:L:33:LEU:HD11	7:L:88:CYS:CB	2.44	0.48
1:A:78:LEU:O	1:A:84:LEU:HD12	2.13	0.48
1:A:112:GLN:O	1:A:112:GLN:NE2	2.46	0.48
1:A:495:GLN:HA	1:A:505:THR:HG22	1.95	0.48
1:A:726:SER:OG	1:A:728:LYS:NZ	2.37	0.48
2:B:100:LYS:O	2:B:105:SER:OG	2.21	0.48
2:B:228:TRP:NE1	2:B:273:ARG:O	2.47	0.48
6:H:195:SER:OG	6:H:201:TYR:OH	2.28	0.47
2:B:164:ILE:HG21	2:B:174:LEU:HD11	1.96	0.47
2:B:303:ASP:OD1	2:B:325:ARG:N	2.43	0.47

*Continued on next page...*



*Continued from previous page...*

Atom-1	Atom-2	Interatomic distance (Å)	Clash overlap (Å)
1:A:325:MET:O	1:A:337:LEU:HD12	2.15	0.47
1:A:380:ASP:OD1	1:A:381:LEU:N	2.46	0.47
1:A:610:LYS:HB3	1:A:646:MET:CE	2.44	0.47
1:A:767:ARG:NH1	1:A:797:ASP:OD2	2.48	0.47
2:B:285:SER:OG	2:B:286:VAL:N	2.47	0.47
1:A:370:ARG:NH1	1:A:521:GLU:OE2	2.48	0.47
2:B:112:SER:O	2:B:112:SER:OG	2.18	0.47
3:C:78:LYS:O	3:C:80:LEU:N	2.48	0.47
7:L:46:LEU:C	7:L:47:LEU:HD23	2.34	0.47
1:A:284:ILE:O	1:A:288:THR:HG22	2.15	0.47
2:B:382:ALA:N	2:B:386:THR:O	2.44	0.47
3:C:48:ALA:HB1	4:D:212:ARG:HH22	1.80	0.47
3:C:50:LEU:HD12	3:C:51:HIS:N	2.30	0.47
4:D:208:THR:O	4:D:211:THR:N	2.38	0.47
6:H:11:LEU:HD11	6:H:119:SER:HB3	1.96	0.47
1:A:220:ALA:HA	1:A:223:LEU:HD12	1.97	0.47
1:A:709:ASN:OD1	1:A:709:ASN:N	2.47	0.47
7:L:8:PRO:CG	7:L:11:LEU:HD11	2.45	0.47
1:A:754:TYR:O	1:A:756:GLY:N	2.44	0.46
2:B:308:LEU:HD23	2:B:315:THR:CA	2.46	0.46
6:H:39:GLN:OE1	6:H:44:GLY:N	2.48	0.46
1:A:410:ASP:OD1	1:A:410:ASP:N	2.48	0.46
2:B:365:SER:OG	2:B:384:ASP:OD2	2.32	0.46
1:A:520:ASN:ND2	1:A:523:ASN:OD1	2.42	0.46
7:L:89:LEU:HD13	7:L:99:PHE:CZ	2.50	0.46
2:B:199:ALA:O	2:B:201:THR:HG23	2.15	0.46
1:A:180:ILE:HG22	1:A:182:ILE:HD11	1.97	0.46
6:H:195:SER:HG	6:H:201:TYR:HH	1.64	0.46
2:B:290:ILE:O	2:B:297:TYR:N	2.47	0.46
1:A:664:GLN:HB3	1:A:667:THR:HG21	1.98	0.46
4:D:56:GLU:OE2	4:D:60:ASN:ND2	2.43	0.46
1:A:202:GLU:OE1	1:A:203:VAL:N	2.49	0.46
1:A:434:THR:HG23	1:A:437:GLY:HA2	1.96	0.46
4:D:137:PRO:O	4:D:140:ALA:N	2.48	0.46
4:D:91:ALA:O	4:D:94:ARG:NH2	2.49	0.45
7:L:3:GLN:OE1	7:L:24:ARG:NH2	2.42	0.45
1:A:268:LEU:HD12	1:A:335:VAL:O	2.15	0.45
1:A:100:SER:N	1:A:167:LEU:O	2.48	0.45
1:A:640:GLY:HA3	1:A:644:LYS:O	2.16	0.45
5:E:89:GLN:NE2	5:E:108:PRO:O	2.37	0.45
1:A:126:ASP:OD1	1:A:129:THR:N	2.46	0.45

*Continued on next page...*

*Continued from previous page...*

Atom-1	Atom-2	Interatomic distance (Å)	Clash overlap (Å)
1:A:793:LYS:NZ	1:A:797:ASP:O	2.50	0.45
2:B:253:VAL:HG21	2:B:272:LEU:HD11	1.97	0.45
4:D:75:LEU:HD11	4:D:79:TYR:CZ	2.51	0.45
4:D:194:VAL:HG13	4:D:195:VAL:N	2.31	0.45
5:E:93:LEU:HD12	5:E:93:LEU:N	2.32	0.45
7:L:89:LEU:HD13	7:L:99:PHE:CE1	2.52	0.45
1:A:377:LEU:HD23	1:A:377:LEU:N	2.31	0.45
1:A:417:LYS:NZ	1:A:418:VAL:O	2.43	0.45
1:A:173:VAL:HG11	1:A:252:LYS:HE3	1.97	0.45
1:A:192:GLU:OE1	1:A:192:GLU:N	2.42	0.45
2:B:80:LEU:HD23	2:B:96:SER:CB	2.46	0.45
6:H:110:TRP:CD2	7:L:44:PRO:HG2	2.52	0.45
1:A:499:ALA:HB3	1:A:501:LEU:HD11	1.99	0.45
2:B:123:TYR:O	2:B:124:ILE:HD13	2.17	0.45
1:A:774:LEU:HD12	1:A:775:GLN:H	1.81	0.45
1:A:372:MET:SD	5:E:32:ILE:HG22	2.58	0.44
1:A:613:LEU:HD12	1:A:614:ASP:N	2.31	0.44
1:A:727:ASP:OD2	1:A:727:ASP:N	2.50	0.44
2:B:39:GLU:O	2:B:40:ASN:ND2	2.50	0.44
6:H:58:ILE:N	6:H:58:ILE:HD12	2.33	0.44
1:A:336:LYS:NZ	1:A:337:LEU:O	2.49	0.44
1:A:348:TYR:HA	1:A:377:LEU:HD22	1.99	0.44
6:H:15:GLY:N	6:H:86:LEU:O	2.50	0.44
4:D:106:ASP:OD1	4:D:107:TYR:N	2.51	0.44
5:E:93:LEU:CD2	5:E:104:ILE:HG22	2.47	0.44
2:B:315:THR:HG23	2:B:315:THR:O	2.17	0.44
1:A:608:TYR:HB2	1:A:646:MET:SD	2.57	0.44
2:B:287:ASN:OD1	2:B:288:ASP:N	2.43	0.44
2:B:298:LEU:N	2:B:298:LEU:HD23	2.33	0.44
3:C:52:ALA:HB2	3:C:58:LEU:HD22	2.00	0.44
4:D:219:GLU:HB2	4:D:234:VAL:HG11	2.00	0.44
5:E:96:ASN:N	5:E:100:VAL:O	2.41	0.44
6:H:110:TRP:CE3	7:L:44:PRO:HG2	2.52	0.44
2:B:164:ILE:HG21	2:B:174:LEU:CD1	2.47	0.44
3:C:40:ALA:CB	3:C:42:LEU:HD21	2.47	0.44
1:A:49:ARG:O	1:A:54:VAL:HG12	2.18	0.44
1:A:276:ASN:CG	1:A:343:ALA:HB3	2.38	0.44
1:A:494:PHE:O	1:A:507:LYS:NZ	2.47	0.44
6:H:123:THR:HG23	6:H:154:PRO:HD2	1.98	0.44
7:L:8:PRO:HG3	7:L:11:LEU:HD11	2.00	0.44
7:L:14:SER:O	7:L:78:LEU:HD11	2.17	0.44

*Continued on next page...*

*Continued from previous page...*

Atom-1	Atom-2	Interatomic distance (Å)	Clash overlap (Å)
6:H:54:THR:HG23	6:H:56:SER:H	1.82	0.44
7:L:142:PRO:O	7:L:199:HIS:NE2	2.35	0.44
1:A:622:ASP:OD1	1:A:622:ASP:N	2.49	0.43
1:A:234:GLY:O	1:A:266:TYR:N	2.51	0.43
1:A:237:ARG:HH22	1:A:328:ILE:HG21	1.83	0.43
1:A:484:SER:O	1:A:515:LEU:HD12	2.17	0.43
2:B:211:GLY:N	2:B:248:ASP:OD1	2.50	0.43
1:A:244:GLN:NE2	1:A:259:ASN:OD1	2.51	0.43
1:A:479:THR:OG1	1:A:483:VAL:HG11	2.18	0.43
6:H:11:LEU:HD12	6:H:12:VAL:H	1.83	0.43
1:A:34:LEU:HD12	1:A:37:VAL:CG1	2.45	0.43
1:A:312:LEU:O	1:A:317:TYR:N	2.43	0.43
1:A:110:LEU:O	1:A:114:LEU:HD23	2.19	0.43
4:D:237:ILE:O	4:D:240:ALA:HB3	2.19	0.43
2:B:238:SER:O	2:B:239:THR:OG1	2.21	0.43
1:A:49:ARG:NH1	1:A:52:ASP:OD1	2.42	0.43
1:A:160:ARG:NH2	4:D:29:ASP:OD1	2.52	0.43
1:A:594:ASN:O	1:A:613:LEU:HD12	2.19	0.43
7:L:5:THR:OG1	7:L:24:ARG:NH2	2.52	0.43
7:L:78:LEU:HD12	7:L:78:LEU:O	2.19	0.43
6:H:18:LEU:HD12	6:H:19:LYS:H	1.84	0.43
1:A:618:TYR:CE1	1:A:630:LEU:HD13	2.54	0.42
6:H:33:GLY:C	6:H:99:HIS:HD1	2.22	0.42
1:A:587:PRO:O	1:A:734:ARG:NH1	2.50	0.42
2:B:175:ASN:ND2	2:B:178:ASP:OD1	2.52	0.42
6:H:123:THR:HG23	6:H:154:PRO:HD3	2.01	0.42
1:A:607:GLU:O	1:A:644:LYS:HB2	2.19	0.42
1:A:639:ASP:OD1	1:A:639:ASP:N	2.52	0.42
2:B:309:THR:HG22	2:B:310:ILE:N	2.35	0.42
4:D:208:THR:HG22	4:D:210:ALA:HB3	2.01	0.42
6:H:17:SER:HA	6:H:83:MET:O	2.19	0.42
7:L:95:PRO:HB2	7:L:96:PRO:HD3	2.01	0.42
2:B:36:PRO:HG2	2:B:322:LEU:HD21	2.01	0.42
6:H:37:ILE:HD11	6:H:47:TRP:HD1	1.84	0.42
7:L:83:VAL:CG1	7:L:107:LEU:HD21	2.49	0.42
2:B:76:ASP:OD1	2:B:78:ALA:HB3	2.20	0.42
1:A:380:ASP:OD1	1:A:380:ASP:N	2.51	0.42
1:A:543:VAL:N	1:A:673:VAL:O	2.52	0.42
1:A:746:ASP:OD2	1:A:747:THR:N	2.53	0.42
3:C:50:LEU:HD12	3:C:51:HIS:ND1	2.34	0.42
7:L:168:ASP:OD1	7:L:169:SER:N	2.52	0.42

*Continued on next page...*

*Continued from previous page...*

Atom-1	Atom-2	Interatomic distance (Å)	Clash overlap (Å)
1:A:94:ILE:HA	1:A:163:VAL:HG23	2.01	0.42
2:B:114:GLY:O	2:B:124:ILE:HD12	2.20	0.42
2:B:350:ASN:N	2:B:355:ARG:O	2.47	0.42
1:A:630:LEU:HD23	1:A:717:GLU:OE1	2.19	0.42
7:L:38:GLN:O	7:L:84:ALA:HB1	2.19	0.42
1:A:325:MET:SD	1:A:325:MET:N	2.93	0.42
1:A:733:VAL:HG22	1:A:774:LEU:HD11	2.00	0.42
2:B:143:TRP:HZ3	2:B:145:THR:HG22	1.84	0.42
3:C:62:SER:N	4:D:203:ARG:O	2.46	0.42
5:E:32:ILE:HD11	5:E:80:GLN:HB2	2.02	0.42
7:L:15:LEU:HD22	7:L:79:GLN:C	2.41	0.42
1:A:743:THR:HG21	1:A:764:SER:O	2.19	0.41
3:C:52:ALA:HB1	3:C:53:PRO:CD	2.50	0.41
4:D:194:VAL:O	4:D:197:ARG:HB2	2.19	0.41
7:L:17:GLU:OE1	7:L:108:ARG:NH2	2.52	0.41
1:A:617:THR:O	1:A:630:LEU:HD12	2.20	0.41
4:D:58:LEU:HD23	4:D:58:LEU:O	2.19	0.41
4:D:59:ASP:OD1	4:D:60:ASN:ND2	2.53	0.41
4:D:67:TYR:O	4:D:71:VAL:HG23	2.20	0.41
6:H:166:LEU:HD21	6:H:201:TYR:HD1	1.85	0.41
1:A:267:LYS:N	1:A:333:LYS:O	2.50	0.41
3:C:40:ALA:HB3	3:C:42:LEU:HD21	2.02	0.41
1:A:657:SER:HA	1:A:661:ARG:HA	2.02	0.41
1:A:274:SER:O	1:A:340:ASN:ND2	2.54	0.41
2:B:141:VAL:HG12	2:B:143:TRP:N	2.35	0.41
4:D:111:MET:HA	4:D:114:LEU:HD12	2.03	0.41
5:E:62:PRO:HG3	5:E:73:TRP:CD2	2.56	0.41
6:H:4:LEU:HD13	6:H:109:TYR:CZ	2.55	0.41
6:H:123:THR:HG22	6:H:210:SER:HB2	2.03	0.41
1:A:276:ASN:N	1:A:276:ASN:OD1	2.52	0.41
2:B:378:LEU:HD12	2:B:379:LEU:H	1.85	0.41
6:H:45:LEU:HD23	7:L:99:PHE:CG	2.55	0.41
2:B:267:LEU:CD2	2:B:283:LEU:HD12	2.50	0.41
2:B:300:ASP:N	2:B:304:ARG:O	2.53	0.41
6:H:54:THR:HG23	6:H:56:SER:N	2.36	0.41
1:A:255:TYR:OH	2:B:60:TYR:N	2.54	0.41
1:A:268:LEU:HD12	1:A:269:SER:H	1.85	0.41
1:A:549:LEU:N	1:A:549:LEU:HD22	2.35	0.41
2:B:379:LEU:HA	2:B:390:ILE:HG12	2.03	0.41
5:E:50:MET:H	5:E:101:LEU:HD12	1.84	0.41
1:A:94:ILE:HG22	1:A:123:GLU:O	2.21	0.41

*Continued on next page...*

Continued from previous page...

Atom-1	Atom-2	Interatomic distance (Å)	Clash overlap (Å)
1:A:804:PHE:CD2	1:A:806:ILE:HD11	2.56	0.41
2:B:50:THR:HB	2:B:387:VAL:HG12	2.03	0.41
2:B:143:TRP:CZ3	2:B:145:THR:HG22	2.56	0.41
2:B:164:ILE:O	2:B:171:LEU:HD12	2.20	0.41
2:B:348:TRP:CG	2:B:358:ALA:HB3	2.56	0.41
2:B:368:GLN:HG3	2:B:369:THR:HG23	2.03	0.41
5:E:40:ALA:C	5:E:43:VAL:HG22	2.41	0.41
5:E:110:LEU:N	5:E:110:LEU:HD23	2.35	0.41
7:L:77:SER:O	7:L:77:SER:OG	2.37	0.41
1:A:617:THR:O	1:A:617:THR:HG23	2.21	0.41
1:A:737:PHE:CD1	1:A:772:ILE:HG23	2.56	0.41
2:B:121:HIS:HD2	2:B:142:ALA:HB2	1.86	0.41
6:H:157:VAL:HG11	6:H:205:VAL:HG13	2.03	0.41
1:A:30:HIS:HB3	1:A:85:LEU:HD23	2.04	0.40
1:A:95:ALA:HB3	1:A:164:ASP:OD2	2.21	0.40
1:A:129:THR:HG23	1:A:133:ILE:HD11	2.02	0.40
5:E:92:THR:CA	5:E:93:LEU:HD12	2.51	0.40
1:A:664:GLN:HB2	1:A:667:THR:HG21	2.02	0.40
1:A:709:ASN:ND2	1:A:746:ASP:OD2	2.44	0.40
1:A:158:LEU:HD11	1:A:164:ASP:OD2	2.22	0.40
6:H:159:VAL:HG22	6:H:205:VAL:HG22	2.04	0.40
7:L:109:ARG:HH12	7:L:112:ALA:HB2	1.87	0.40
4:D:215:LEU:HD22	4:D:237:ILE:HG21	2.02	0.40
5:E:70:THR:O	5:E:72:THR:HG22	2.22	0.40
6:H:102:LYS:HB2	6:H:103:LEU:HD12	2.03	0.40

There are no symmetry-related clashes.

## 5.3 Torsion angles

### 5.3.1 Protein backbone

In the following table, the Percentiles column shows the percent Ramachandran outliers of the chain as a percentile score with respect to all PDB entries followed by that with respect to all EM entries.

The Analysed column shows the number of residues for which the backbone conformation was analysed, and the total number of residues.

Mol	Chain	Analysed	Favoured	Allowed	Outliers	Percentiles	
1	A	757/810 (94%)	678 (90%)	76 (10%)	3 (0%)	30	68

Continued on next page...

Continued from previous page...

Mol	Chain	Analysed	Favoured	Allowed	Outliers	Percentiles	
2	B	353/392 (90%)	293 (83%)	60 (17%)	0	100	100
3	C	54/344 (16%)	36 (67%)	15 (28%)	3 (6%)	1	14
4	D	216/245 (88%)	203 (94%)	12 (6%)	1 (0%)	25	64
5	E	81/123 (66%)	67 (83%)	14 (17%)	0	100	100
6	H	219/228 (96%)	195 (89%)	20 (9%)	4 (2%)	7	35
7	L	213/215 (99%)	197 (92%)	12 (6%)	4 (2%)	6	32
All	All	1893/2357 (80%)	1669 (88%)	209 (11%)	15 (1%)	19	55

All (15) Ramachandran outliers are listed below:

Mol	Chain	Res	Type
6	H	102	LYS
7	L	80	SER
1	A	209	VAL
1	A	556	PRO
6	H	135	SER
7	L	9	ALA
1	A	795	ASP
3	C	73	SER
4	D	209	GLN
7	L	96	PRO
3	C	33	ARG
3	C	49	GLU
6	H	134	SER
6	H	84	THR
7	L	8	PRO

### 5.3.2 Protein sidechains ⓘ

In the following table, the Percentiles column shows the percent sidechain outliers of the chain as a percentile score with respect to all PDB entries followed by that with respect to all EM entries.

The Analysed column shows the number of residues for which the sidechain conformation was analysed, and the total number of residues.

Mol	Chain	Analysed	Rotameric	Outliers	Percentiles	
1	A	649/688 (94%)	644 (99%)	5 (1%)	79	85
2	B	289/321 (90%)	286 (99%)	3 (1%)	73	82

Continued on next page...

*Continued from previous page...*

Mol	Chain	Analysed	Rotameric	Outliers	Percentiles	
3	C	41/276 (15%)	41 (100%)	0	100	100
4	D	183/204 (90%)	181 (99%)	2 (1%)	70	80
5	E	72/103 (70%)	71 (99%)	1 (1%)	62	75
6	H	186/193 (96%)	185 (100%)	1 (0%)	86	89
7	L	188/188 (100%)	187 (100%)	1 (0%)	86	89
All	All	1608/1973 (82%)	1595 (99%)	13 (1%)	77	85

All (13) residues with a non-rotameric sidechain are listed below:

Mol	Chain	Res	Type
1	A	79	ARG
1	A	277	LEU
1	A	283	GLU
1	A	526	ARG
1	A	610	LYS
2	B	195	ARG
2	B	281	ARG
2	B	295	ARG
4	D	69	GLN
4	D	173	ARG
5	E	93	LEU
6	H	147	CYS
7	L	87	PHE

Sometimes sidechains can be flipped to improve hydrogen bonding and reduce clashes. All (31) such sidechains are listed below:

Mol	Chain	Res	Type
1	A	113	ASN
1	A	161	ASN
1	A	186	HIS
1	A	215	GLN
1	A	244	GLN
1	A	259	ASN
1	A	286	GLN
1	A	297	ASN
1	A	345	ASN
1	A	606	ASN
1	A	775	GLN
1	A	789	GLN

*Continued on next page...*

*Continued from previous page...*

Mol	Chain	Res	Type
1	A	805	ASN
2	B	40	ASN
2	B	85	ASN
2	B	121	HIS
2	B	135	ASN
2	B	144	GLN
2	B	170	GLN
2	B	230	GLN
2	B	264	ASN
2	B	294	ASN
2	B	301	GLN
2	B	302	ASN
2	B	347	HIS
4	D	47	ASN
4	D	196	ASN
5	E	34	GLN
5	E	54	GLN
5	E	96	ASN
7	L	167	GLN

### 5.3.3 RNA ⓘ

There are no RNA molecules in this entry.

### 5.4 Non-standard residues in protein, DNA, RNA chains ⓘ

There are no non-standard protein/DNA/RNA residues in this entry.

### 5.5 Carbohydrates ⓘ

There are no oligosaccharides in this entry.

### 5.6 Ligand geometry ⓘ

There are no ligands in this entry.

### 5.7 Other polymers ⓘ

There are no such residues in this entry.



## 5.8 Polymer linkage issues ⓘ

There are no chain breaks in this entry.

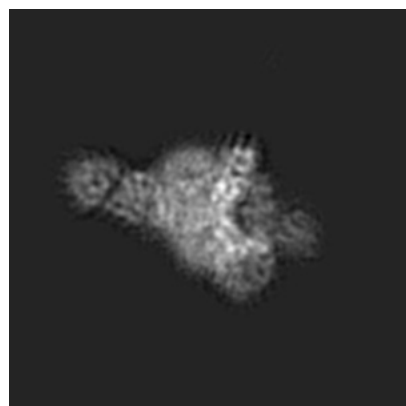
## 6 Map visualisation [i](#)

This section contains visualisations of the EMDB entry EMD-12271. These allow visual inspection of the internal detail of the map and identification of artifacts.

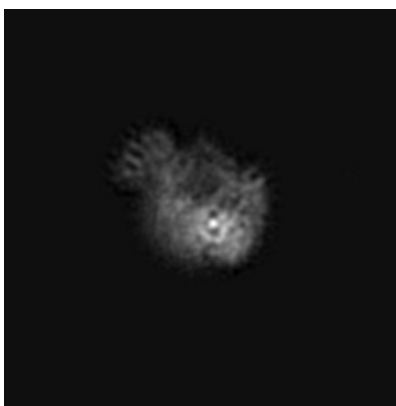
Images derived from a raw map, generated by summing the deposited half-maps, are presented below the corresponding image components of the primary map to allow further visual inspection and comparison with those of the primary map.

### 6.1 Orthogonal projections [i](#)

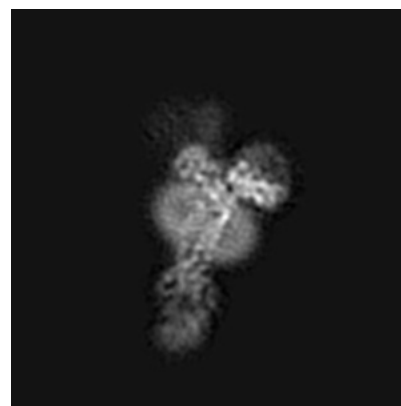
#### 6.1.1 Primary map



X

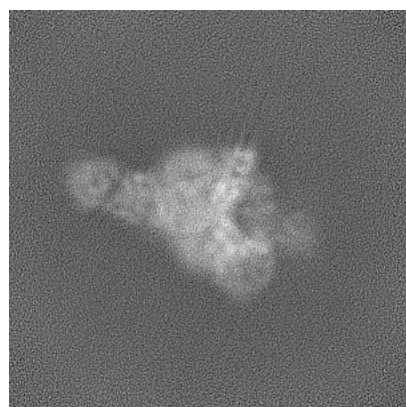


Y

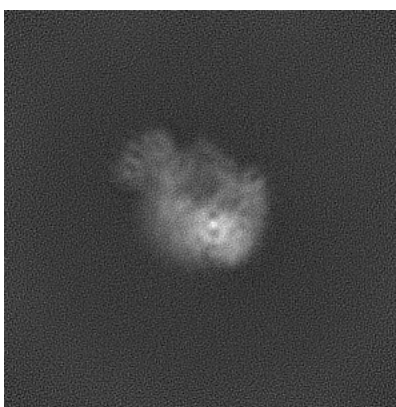


Z

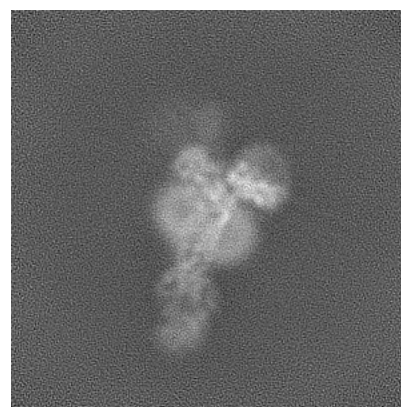
#### 6.1.2 Raw map



X



Y

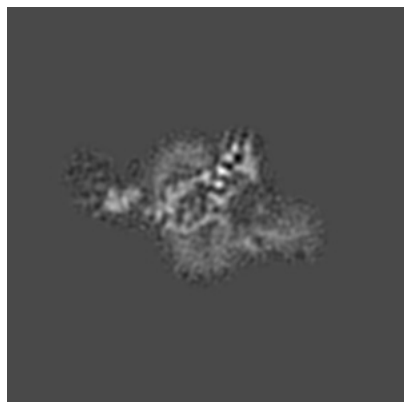


Z

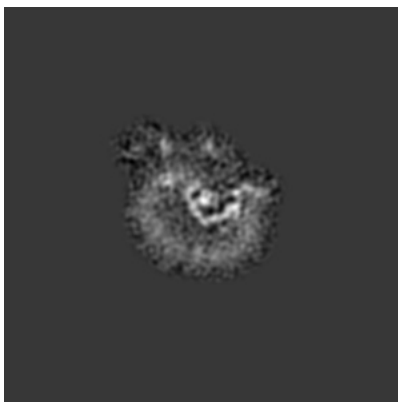
The images above show the map projected in three orthogonal directions.

## 6.2 Central slices [i](#)

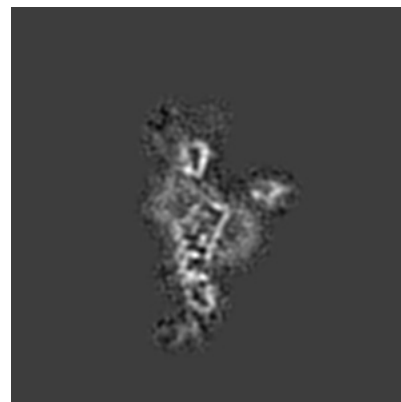
### 6.2.1 Primary map



X Index: 150



Y Index: 150

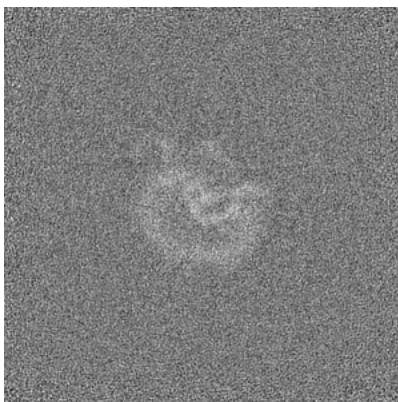


Z Index: 150

### 6.2.2 Raw map



X Index: 150



Y Index: 150

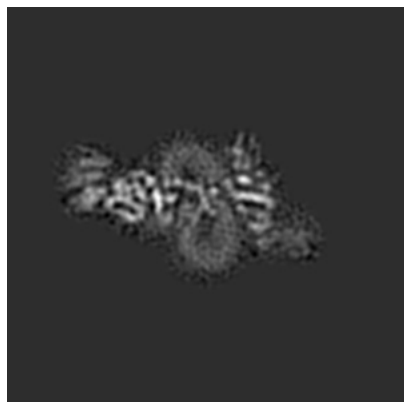


Z Index: 150

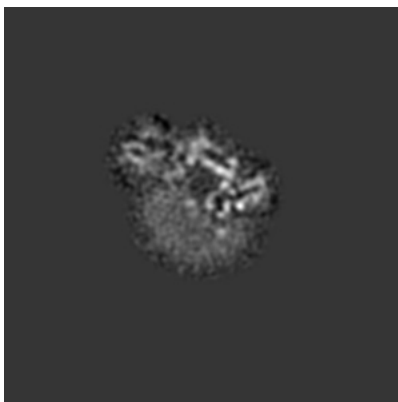
The images above show central slices of the map in three orthogonal directions.

## 6.3 Largest variance slices [i](#)

### 6.3.1 Primary map



X Index: 138

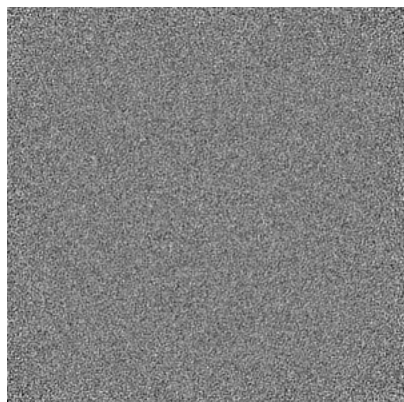


Y Index: 160

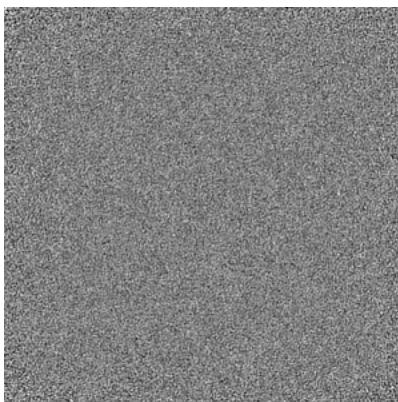


Z Index: 163

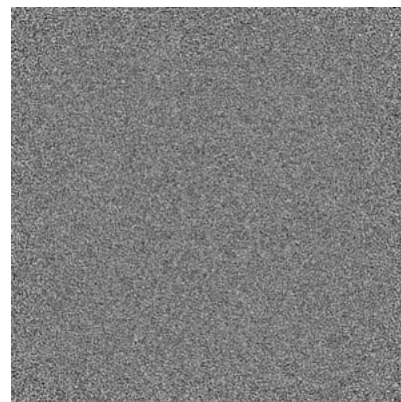
### 6.3.2 Raw map



X Index: 0



Y Index: 0

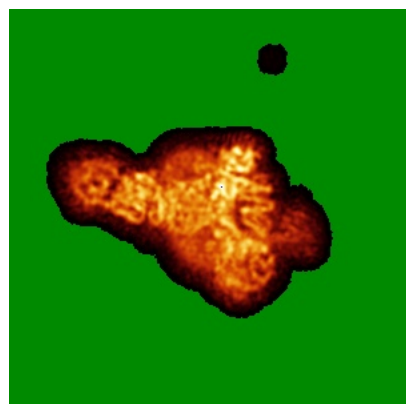


Z Index: 0

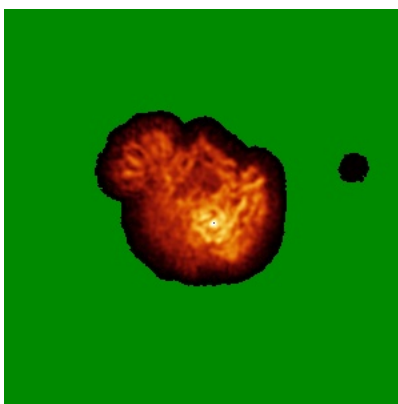
The images above show the largest variance slices of the map in three orthogonal directions.

## 6.4 Orthogonal standard-deviation projections (False-color) [i](#)

### 6.4.1 Primary map



X

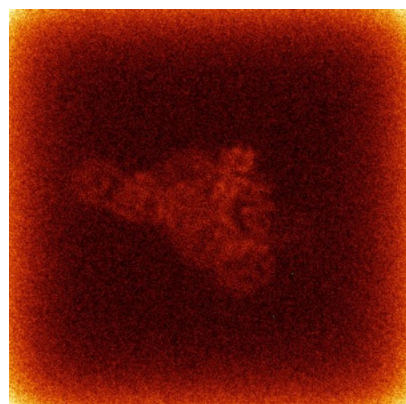


Y

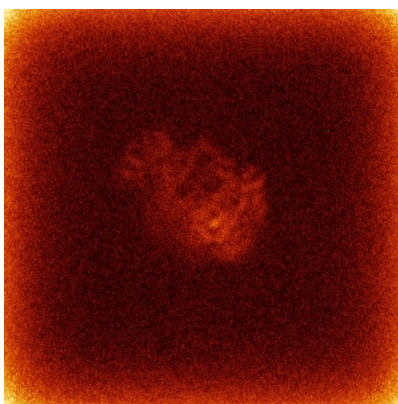


Z

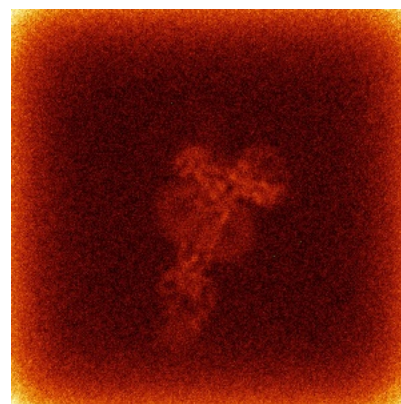
### 6.4.2 Raw map



X



Y



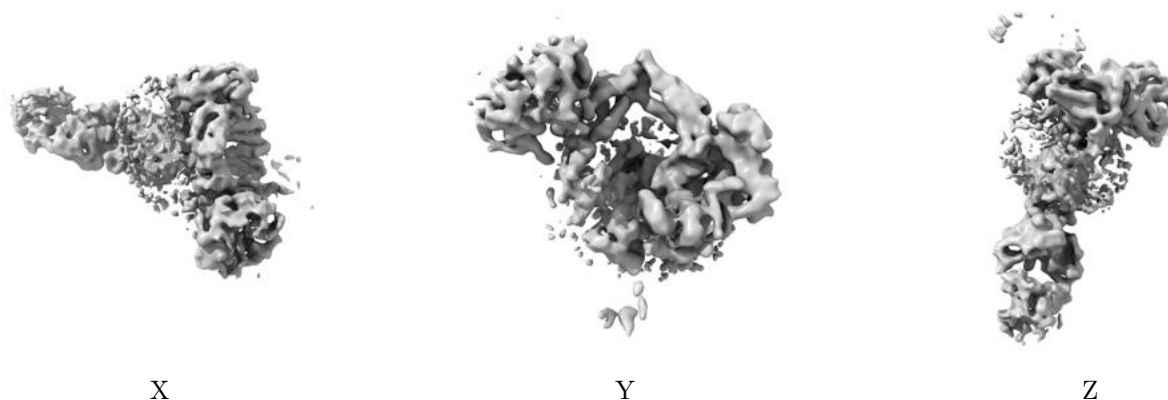
Z

The images above show the map standard deviation projections with false color in three orthogonal directions. Minimum values are shown in green, max in blue, and dark to light orange shades represent small to large values respectively.



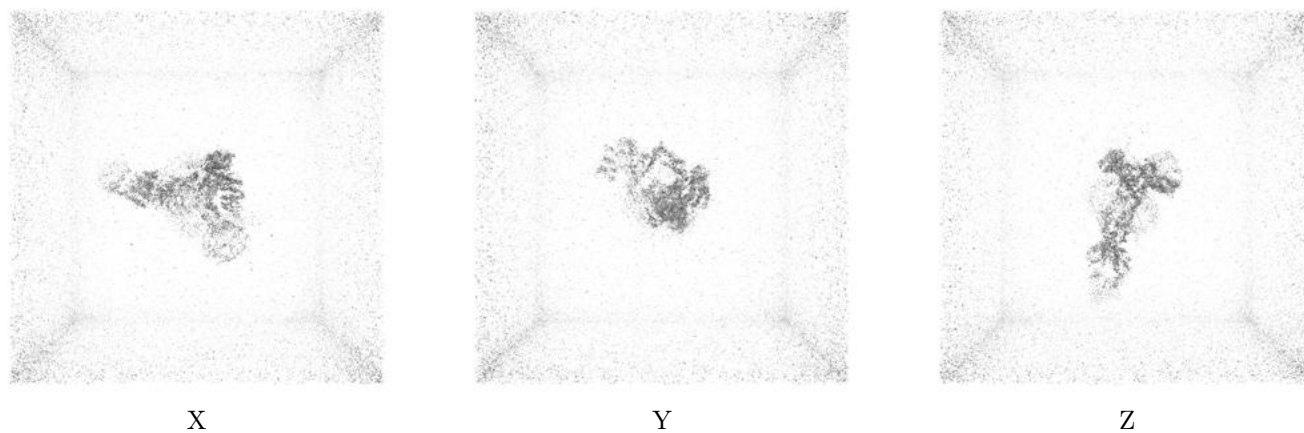
## 6.5 Orthogonal surface views [i](#)

### 6.5.1 Primary map



The images above show the 3D surface view of the map at the recommended contour level 0.294. These images, in conjunction with the slice images, may facilitate assessment of whether an appropriate contour level has been provided.

### 6.5.2 Raw map



These images show the 3D surface of the raw map. The raw map's contour level was selected so that its surface encloses the same volume as the primary map does at its recommended contour level.

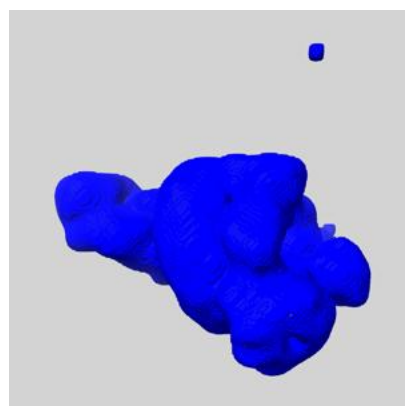
## 6.6 Mask visualisation [i](#)

This section shows the 3D surface view of the primary map at 50% transparency overlaid with the specified mask at 0% transparency

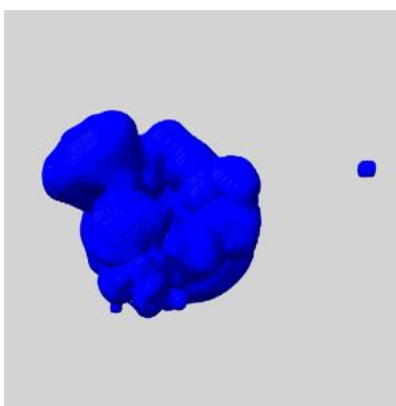
A mask typically either:

- Encompasses the whole structure
- Separates out a domain, a functional unit, a monomer or an area of interest from a larger structure

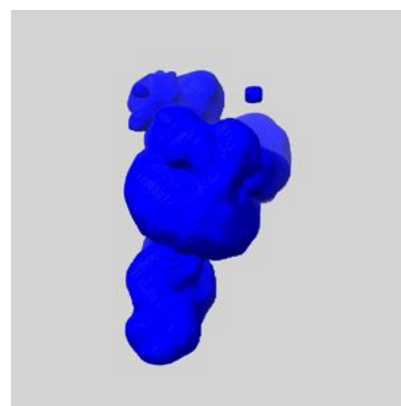
### 6.6.1 emd\_12271\_msk\_1.map [i](#)



X



Y

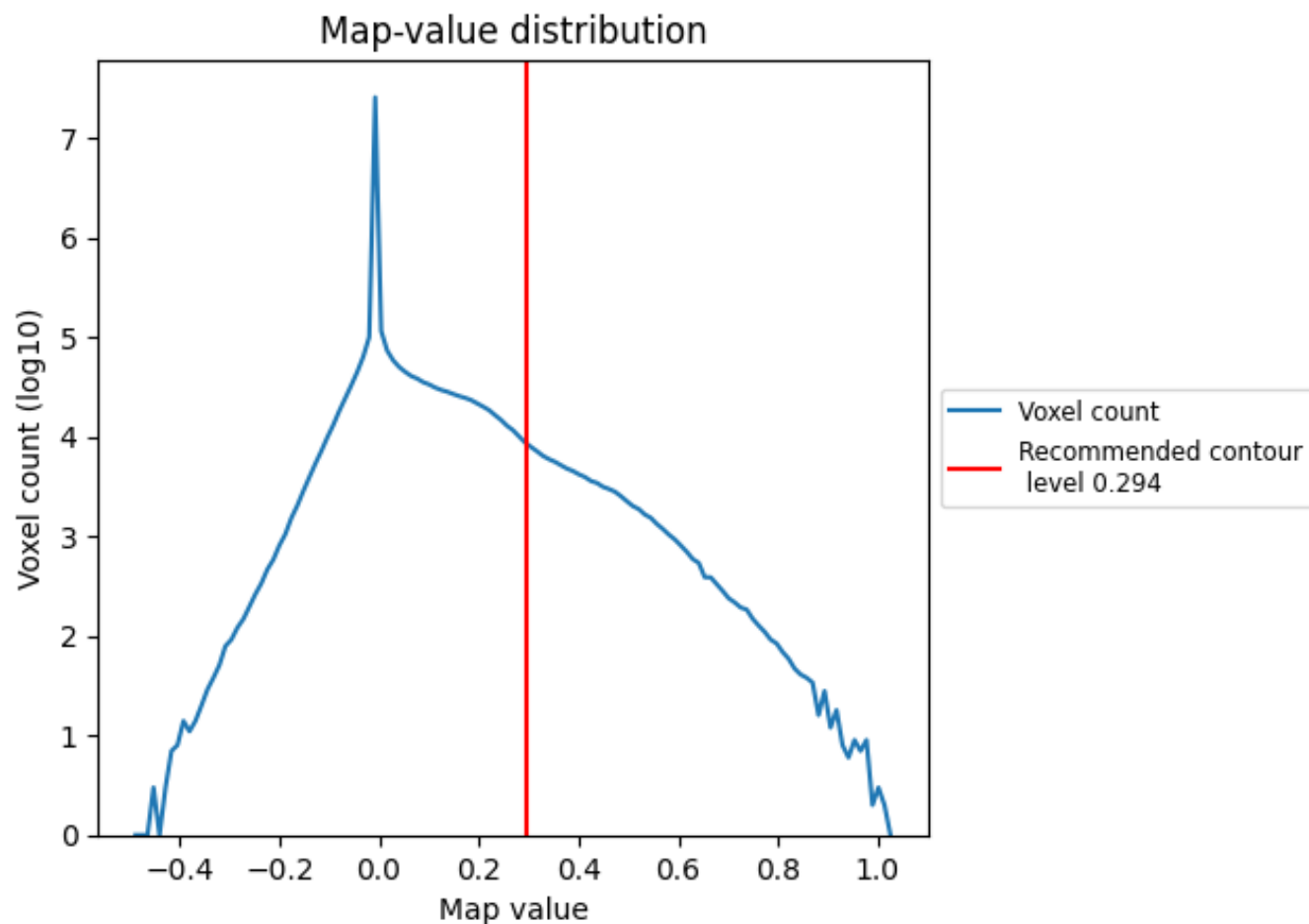


Z

## 7 Map analysis [i](#)

This section contains the results of statistical analysis of the map.

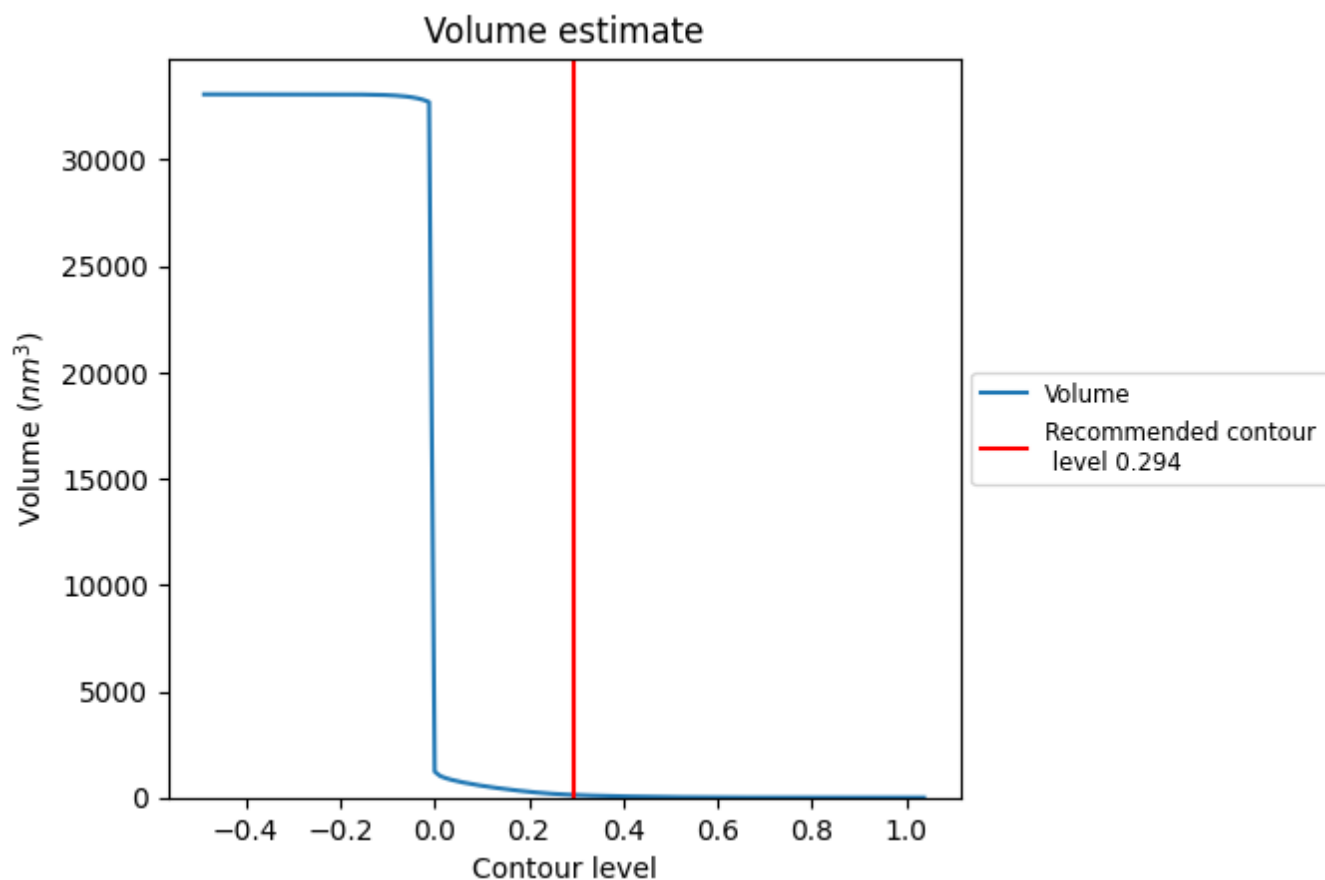
### 7.1 Map-value distribution [i](#)



The map-value distribution is plotted in 128 intervals along the x-axis. The y-axis is logarithmic. A spike in this graph at zero usually indicates that the volume has been masked.



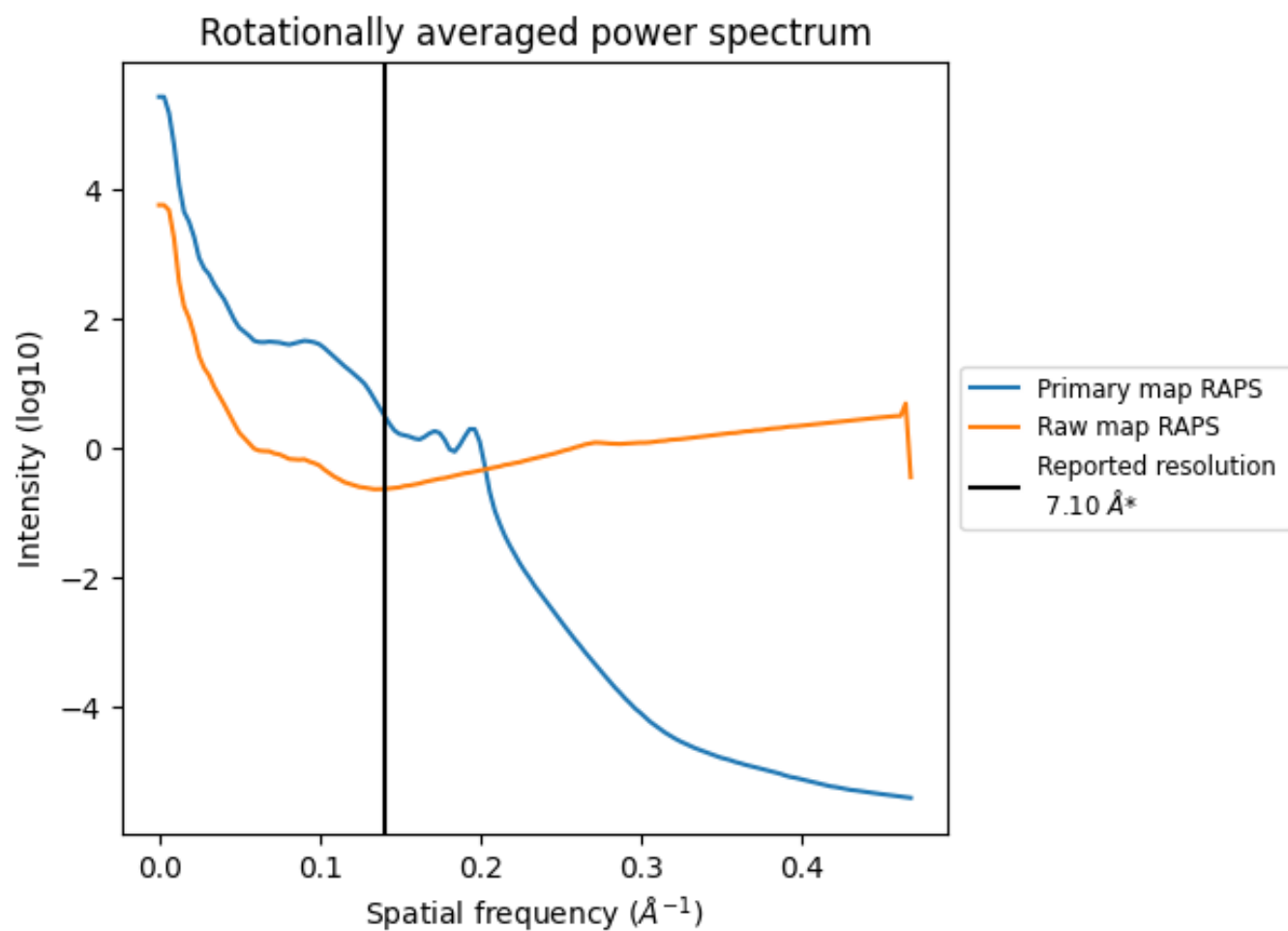
## 7.2 Volume estimate [i](#)



The volume at the recommended contour level is 125 nm<sup>3</sup>; this corresponds to an approximate mass of 113 kDa.

The volume estimate graph shows how the enclosed volume varies with the contour level. The recommended contour level is shown as a vertical line and the intersection between the line and the curve gives the volume of the enclosed surface at the given level.

### 7.3 Rotationally averaged power spectrum ⓘ

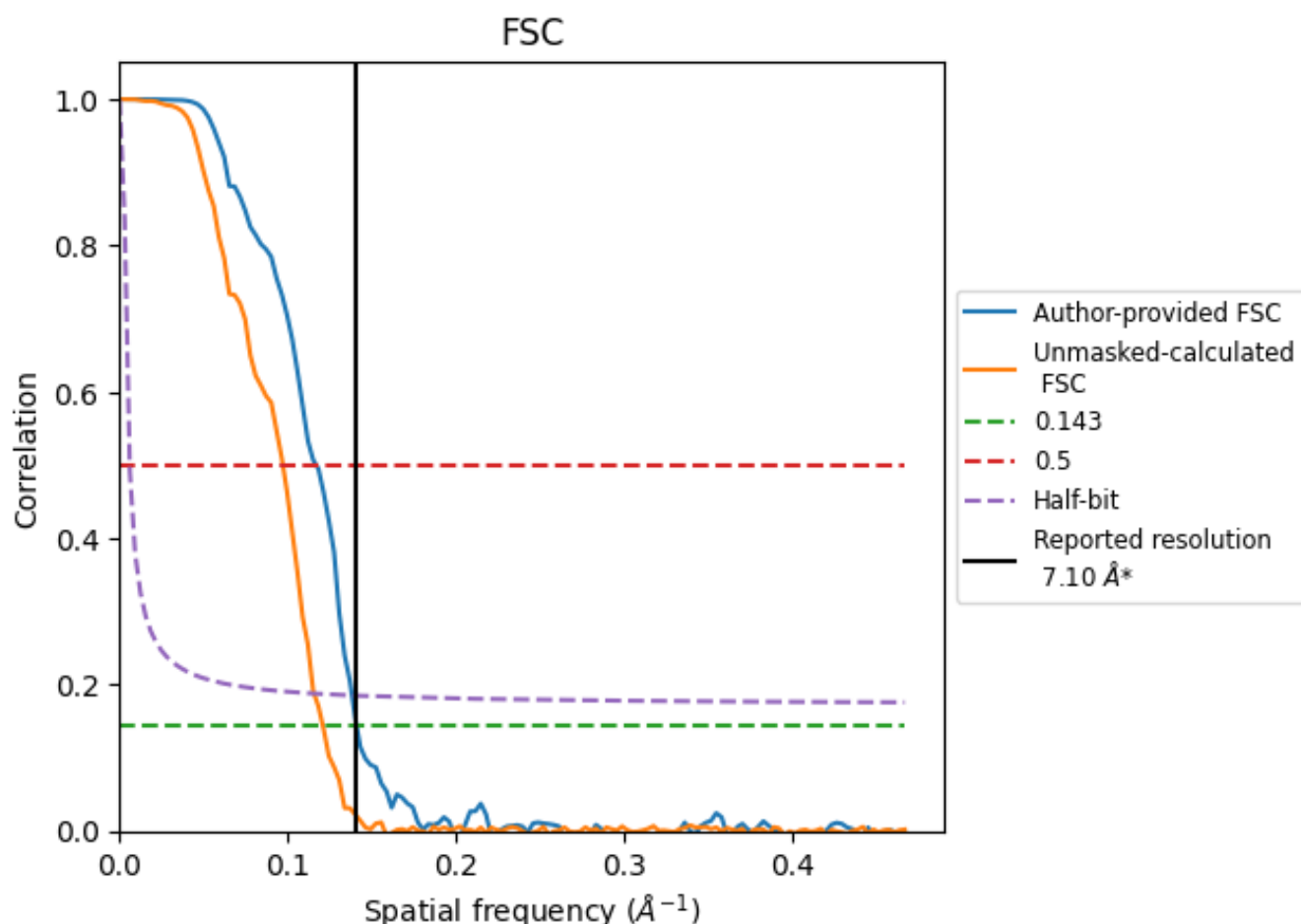


\*Reported resolution corresponds to spatial frequency of 0.141  $\text{\AA}^{-1}$

## 8 Fourier-Shell correlation [i](#)

Fourier-Shell Correlation (FSC) is the most commonly used method to estimate the resolution of single-particle and subtomogram-averaged maps. The shape of the curve depends on the imposed symmetry, mask and whether or not the two 3D reconstructions used were processed from a common reference. The reported resolution is shown as a black line. A curve is displayed for the half-bit criterion in addition to lines showing the 0.143 gold standard cut-off and 0.5 cut-off.

### 8.1 FSC [i](#)



\*Reported resolution corresponds to spatial frequency of 0.141 Å<sup>-1</sup>

## 8.2 Resolution estimates [i](#)

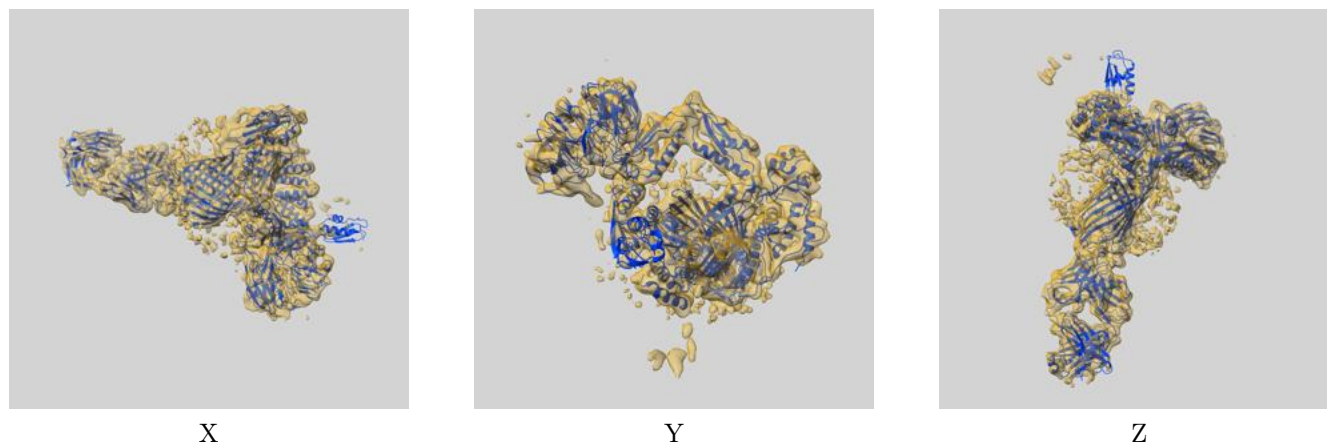
Resolution estimate (Å)	Estimation criterion (FSC cut-off)		
	0.143	0.5	Half-bit
Reported by author	7.10	-	-
Author-provided FSC curve	7.09	8.55	7.23
Unmasked-calculated*	8.26	10.29	8.64

\*Resolution estimate based on FSC curve calculated by comparison of deposited half-maps. The value from deposited half-maps intersecting FSC 0.143 CUT-OFF 8.26 differs from the reported value 7.1 by more than 10 %

## 9 Map-model fit [i](#)

This section contains information regarding the fit between EMDB map EMD-12271 and PDB model 7NCS. Per-residue inclusion information can be found in section [3](#) on page [5](#).

### 9.1 Map-model overlay [i](#)



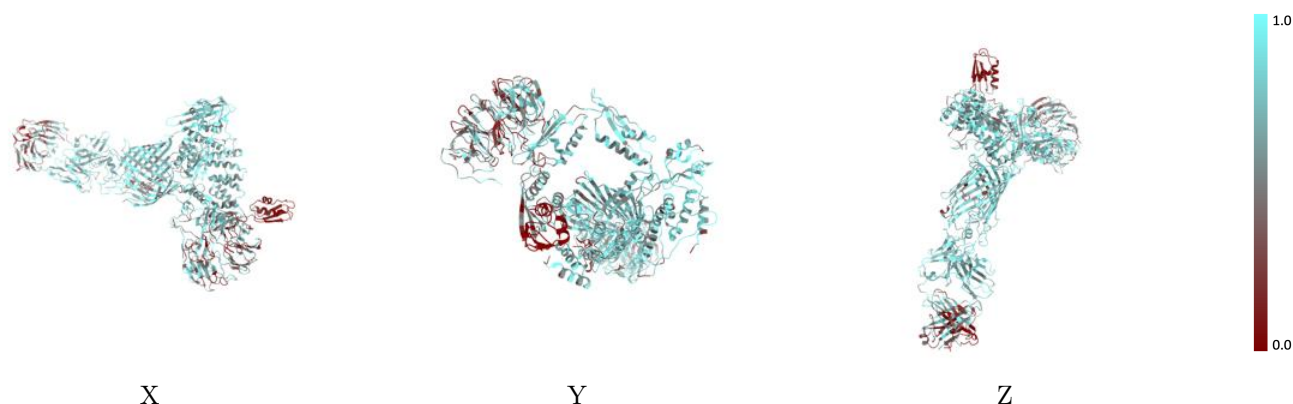
The images above show the 3D surface view of the map at the recommended contour level 0.294 at 50% transparency in yellow overlaid with a ribbon representation of the model coloured in blue. These images allow for the visual assessment of the quality of fit between the atomic model and the map.

## 9.2 Q-score mapped to coordinate model [i](#)



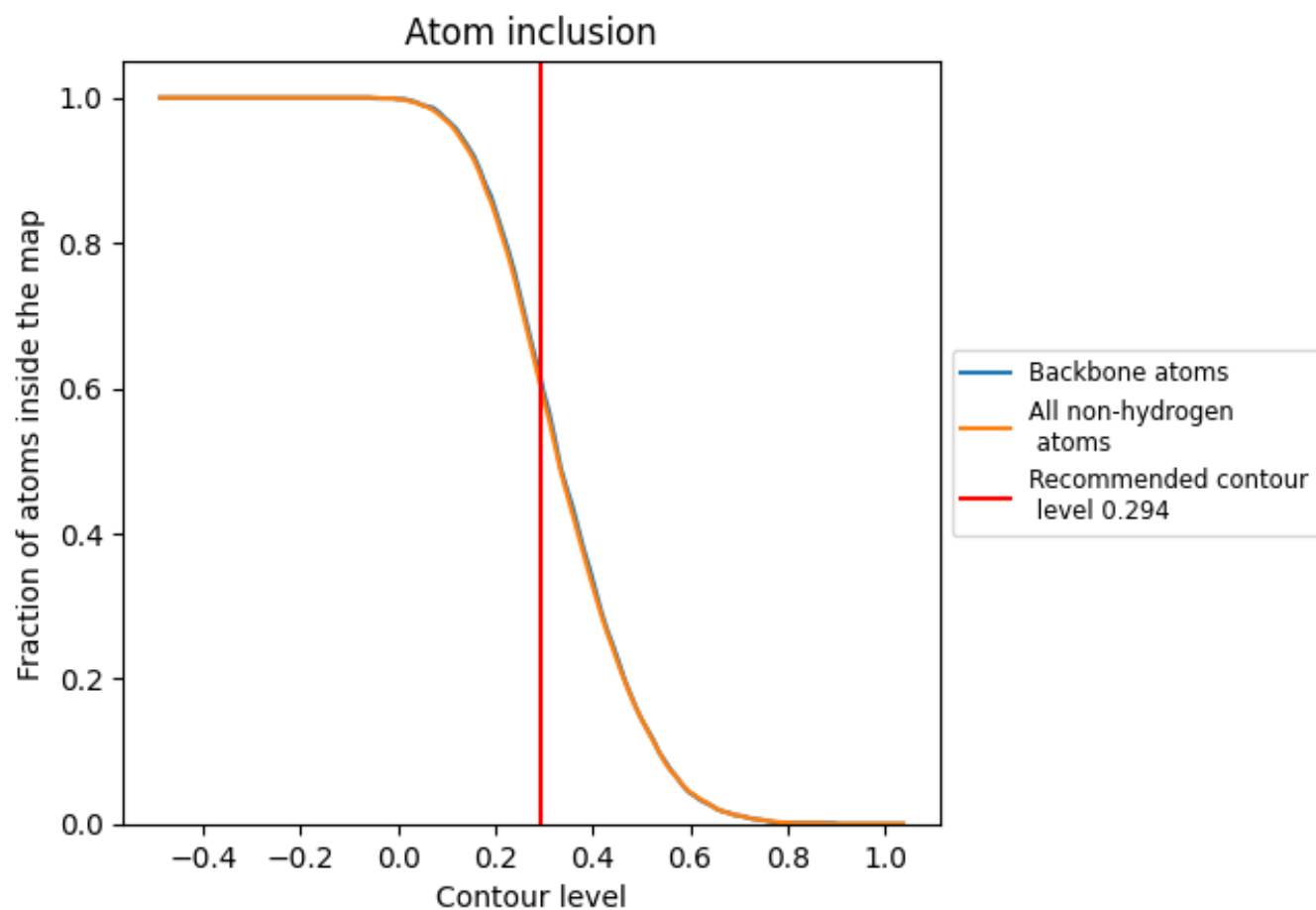
The images above show the model with each residue coloured according its Q-score. This shows their resolvability in the map with higher Q-score values reflecting better resolvability. Please note: Q-score is calculating the resolvability of atoms, and thus high values are only expected at resolutions at which atoms can be resolved. Low Q-score values may therefore be expected for many entries.

## 9.3 Atom inclusion mapped to coordinate model [i](#)



The images above show the model with each residue coloured according to its atom inclusion. This shows to what extent they are inside the map at the recommended contour level (0.294).

## 9.4 Atom inclusion [i](#)



At the recommended contour level, 61% of all backbone atoms, 60% of all non-hydrogen atoms, are inside the map.

9.5 Map-model fit summary ⓘ

The table lists the average atom inclusion at the recommended contour level (0.294) and Q-score for the entire model and for each chain.

Chain	Atom inclusion	Q-score
All	<div></div> 0.6000	<div></div> 0.2180
A	<div></div> 0.6210	<div></div> 0.2220
B	<div></div> 0.4970	<div></div> 0.2020
C	<div></div> 0.6940	<div></div> 0.3350
D	<div></div> 0.7090	<div></div> 0.2220
E	<div></div> 0.7810	<div></div> 0.2530
H	<div></div> 0.6000	<div></div> 0.2050
L	<div></div> 0.6010	<div></div> 0.1980

1.0

0.0

<0.0