



# Full wwPDB EM Validation Report ⓘ

May 19, 2024 – 10:44 PM EDT

PDB ID : 7N6B  
EMDB ID : EMD-24206  
Title : Structure of MmpL3 reconstituted into lipid nanodisc in the TMM bound state  
Authors : Su, C.C.; Yu, E.  
Deposited on : 2021-06-08  
Resolution : 2.66 Å(reported)

This is a Full wwPDB EM Validation Report for a publicly released PDB entry.

We welcome your comments at [validation@mail.wwpdb.org](mailto:validation@mail.wwpdb.org)

A user guide is available at

<https://www.wwpdb.org/validation/2017/EMValidationReportHelp>

with specific help available everywhere you see the ⓘ symbol.

The types of validation reports are described at

<http://www.wwpdb.org/validation/2017/FAQs#types>.

---

The following versions of software and data (see [references ⓘ](#)) were used in the production of this report:

EMDB validation analysis : 0.0.1.dev92  
Mogul : 1.8.5 (274361), CSD as541be (2020)  
MolProbity : 4.02b-467  
buster-report : 1.1.7 (2018)  
Percentile statistics : 20191225.v01 (using entries in the PDB archive December 25th 2019)  
MapQ : 1.9.13  
Ideal geometry (proteins) : Engh & Huber (2001)  
Ideal geometry (DNA, RNA) : Parkinson et al. (1996)  
Validation Pipeline (wwPDB-VP) : 2.36.2

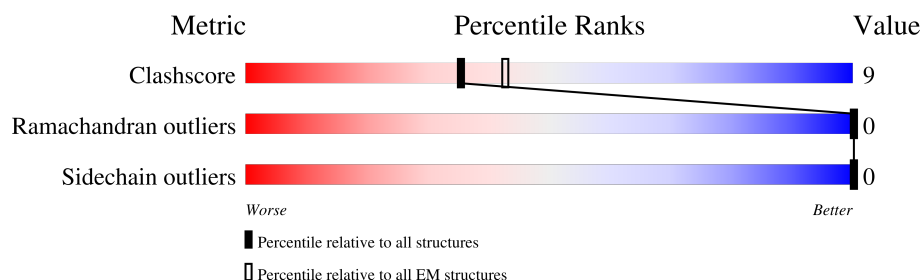
# 1 Overall quality at a glance

The following experimental techniques were used to determine the structure:

*ELECTRON MICROSCOPY*

The reported resolution of this entry is 2.66 Å.

Percentile scores (ranging between 0-100) for global validation metrics of the entry are shown in the following graphic. The table shows the number of entries on which the scores are based.



Metric	Whole archive (#Entries)	EM structures (#Entries)
Clashscore	158937	4297
Ramachandran outliers	154571	4023
Sidechain outliers	154315	3826

The table below summarises the geometric issues observed across the polymeric chains and their fit to the map. The red, orange, yellow and green segments of the bar indicate the fraction of residues that contain outliers for  $\geq 3$ , 2, 1 and 0 types of geometric quality criteria respectively. A grey segment represents the fraction of residues that are not modelled. The numeric value for each fraction is indicated below the corresponding segment, with a dot representing fractions  $\leq 5\%$ . The upper red bar (where present) indicates the fraction of residues that have poor fit to the EM map (all-atom inclusion  $< 40\%$ ). The numeric value is given above the bar.

Mol	Chain	Length	Quality of chain
1	A	1013	<div> <div>14%</div> <div>58%</div> <div>16%</div> <div>25%</div> </div>

## 2 Entry composition [i](#)

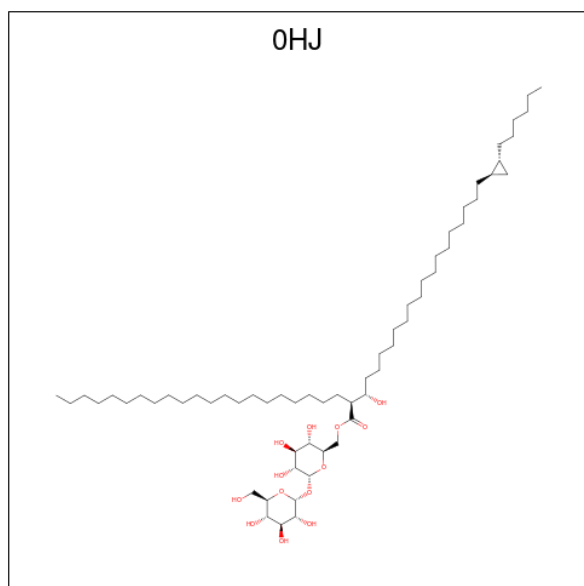
There are 2 unique types of molecules in this entry. The entry contains 5942 atoms, of which 0 are hydrogens and 0 are deuteriums.

In the tables below, the AltConf column contains the number of residues with at least one atom in alternate conformation and the Trace column contains the number of residues modelled with at most 2 atoms.

- Molecule 1 is a protein called MmpL3 transporter.

Mol	Chain	Residues	Atoms					AltConf	Trace
			Total	C	N	O	S		
1	A	757	5803	3758	963	1054	28	0	0

- Molecule 2 is 6-O-[(2S)-2-{(1S)-18-[(1R,2R)-2-hexylcyclopropyl]-1-hydroxyoctadecyl}tricosanoyl]-alpha-D-glucopyranosyl alpha-D-glucopyranoside (three-letter code: OHJ) (formula: C<sub>62</sub>H<sub>118</sub>O<sub>13</sub>) (labeled as "Ligand of Interest" by depositor).



Mol	Chain	Residues	Atoms			AltConf
			Total	C	O	
2	A	1	68	55	13	0
2	A	1	71	58	13	0



PRO  
ALA  
ASP  
GLY  
GLY  
ASN  
GLU  
ASN  
ALA  
PRO  
THR  
THR  
ALA  
PHE  
SER  
ALA  
GLN  
ARG  
PRO  
PRO  
ASN  
GLY  
GLY  
ALA  
PRO  
ALA  
ALA  
ASP  
ALA  
THR  
THR  
ALA  
TLE  
PRO  
THR  
PRO  
PRO  
GLN  
ARG  
GLU  
GLN  
GLU  
PRO  
SER  
THR  
GLU  
LYS  
LEU  
ASN  
THR  
ARG  
GLU  
ASP  
ALA  
PRO  
GLU  
ASP  
PRO  
GLU  
THR  
LYS

ARG  
ARG  
GLY  
GLY  
MET  
SER  
ALA  
GLN  
ASP  
LEU  
LEU  
ARG  
ARG  
GLY  
GLY  
ARG  
LEU

## 4 Experimental information

Property	Value	Source
EM reconstruction method	SINGLE PARTICLE	Depositor
Imposed symmetry	POINT, Not provided	
Number of particles used	415447	Depositor
Resolution determination method	FSC 0.143 CUT-OFF	Depositor
CTF correction method	PHASE FLIPPING AND AMPLITUDE CORRECTION	Depositor
Microscope	FEI TITAN KRIOS	Depositor
Voltage (kV)	300	Depositor
Electron dose ( $e^-/\text{\AA}^2$ )	37	Depositor
Minimum defocus (nm)	Not provided	
Maximum defocus (nm)	Not provided	
Magnification	Not provided	
Image detector	GATAN K3 BIOQUANTUM (6k x 4k)	Depositor
Maximum map value	28.027	Depositor
Minimum map value	-23.579	Depositor
Average map value	-0.000	Depositor
Map value standard deviation	0.409	Depositor
Recommended contour level	1.0	Depositor
Map size (Å)	114.490005, 98.44, 83.46001	wwPDB
Map dimensions	78, 92, 107	wwPDB
Map angles (°)	90.0, 90.0, 90.0	wwPDB
Pixel spacing (Å)	1.07, 1.07, 1.07	Depositor

## 5 Model quality [i](#)

### 5.1 Standard geometry [i](#)

Bond lengths and bond angles in the following residue types are not validated in this section: 0HJ

The Z score for a bond length (or angle) is the number of standard deviations the observed value is removed from the expected value. A bond length (or angle) with  $|Z| > 5$  is considered an outlier worth inspection. RMSZ is the root-mean-square of all Z scores of the bond lengths (or angles).

Mol	Chain	Bond lengths		Bond angles	
		RMSZ	$\# Z  > 5$	RMSZ	$\# Z  > 5$
1	A	0.29	0/5920	0.51	0/8051

There are no bond length outliers.

There are no bond angle outliers.

There are no chirality outliers.

There are no planarity outliers.

### 5.2 Too-close contacts [i](#)

In the following table, the Non-H and H(model) columns list the number of non-hydrogen atoms and hydrogen atoms in the chain respectively. The H(added) column lists the number of hydrogen atoms added and optimized by MolProbity. The Clashes column lists the number of clashes within the asymmetric unit, whereas Symm-Clashes lists symmetry-related clashes.

Mol	Chain	Non-H	H(model)	H(added)	Clashes	Symm-Clashes
1	A	5803	0	5980	102	0
2	A	139	0	0	1	0
All	All	5942	0	5980	102	0

The all-atom clashscore is defined as the number of clashes found per 1000 atoms (including hydrogen atoms). The all-atom clashscore for this structure is 9.

All (102) close contacts within the same asymmetric unit are listed below, sorted by their clash magnitude.

Atom-1	Atom-2	Interatomic distance (Å)	Clash overlap (Å)
1:A:424:LEU:HD12	1:A:629:ALA:HA	1.70	0.74
1:A:297:ILE:HG21	1:A:323:VAL:HG21	1.69	0.73

*Continued on next page...*

*Continued from previous page...*

Atom-1	Atom-2	Interatomic distance (Å)	Clash overlap (Å)
1:A:185:ASP:OD1	1:A:188:ARG:NH2	2.22	0.72
1:A:243:GLN:HG2	1:A:244:PRO:HD3	1.73	0.70
1:A:49:GLN:HE21	1:A:545:PHE:HA	1.57	0.69
1:A:468:PRO:HB3	1:A:511:PRO:HB2	1.78	0.66
1:A:397:VAL:HG21	1:A:722:PHE:HB3	1.80	0.64
1:A:5:TRP:HZ2	1:A:332:THR:HG22	1.65	0.62
1:A:713:LEU:O	1:A:717:THR:OG1	2.16	0.61
1:A:391:GLY:O	1:A:395:ASN:ND2	2.33	0.61
1:A:182:ILE:HG23	1:A:244:PRO:HG3	1.81	0.60
1:A:553:GLU:O	1:A:557:ILE:HG13	2.02	0.60
1:A:5:TRP:CZ2	1:A:332:THR:HG22	2.38	0.58
1:A:295:VAL:HG12	1:A:578:LEU:HD21	1.85	0.58
1:A:387:ARG:O	1:A:392:ARG:NH1	2.37	0.58
1:A:580:PHE:CZ	1:A:742:MET:HB3	2.38	0.58
1:A:628:MET:HG3	1:A:630:PRO:HD2	1.86	0.58
1:A:140:GLN:O	1:A:150:ASN:ND2	2.36	0.58
1:A:610:MET:O	1:A:622:TYR:OH	2.15	0.56
1:A:80:LYS:HB3	1:A:130:LEU:HB3	1.87	0.56
1:A:539:PRO:HG2	1:A:542:ILE:HG13	1.88	0.56
1:A:390:TRP:HZ3	1:A:721:MET:HG2	1.71	0.56
1:A:458:THR:HG22	1:A:517:GLN:HG2	1.88	0.55
1:A:245:VAL:HG13	1:A:249:ILE:HD12	1.90	0.54
1:A:305:LEU:HG	1:A:316:THR:HG21	1.89	0.54
1:A:463:ARG:NH1	1:A:467:GLU:OE1	2.40	0.54
1:A:292:PHE:CZ	1:A:751:LEU:HD23	2.44	0.52
1:A:461:MET:O	1:A:513:VAL:HA	2.08	0.52
1:A:302:VAL:HG23	1:A:303:PRO:HD3	1.90	0.52
1:A:182:ILE:HD12	1:A:244:PRO:HG2	1.92	0.51
1:A:366:ARG:HA	1:A:369:ILE:HB	1.91	0.51
1:A:139:LEU:HB2	1:A:147:ILE:HG23	1.92	0.51
1:A:196:LEU:O	1:A:200:VAL:HG23	2.11	0.50
1:A:264:ARG:O	1:A:268:GLU:HG2	2.11	0.50
1:A:600:LEU:HD11	1:A:636:ILE:HA	1.93	0.50
1:A:478:ARG:O	1:A:482:LEU:HG	2.11	0.50
1:A:125:MET:HG2	1:A:134:PHE:CZ	2.47	0.50
1:A:580:PHE:HD2	1:A:581:LEU:HD12	1.76	0.50
1:A:530:ILE:HD13	1:A:551:ALA:HA	1.93	0.49
1:A:28:GLY:O	1:A:32:ILE:HG23	2.12	0.49
1:A:382:ARG:HH21	1:A:674:THR:HG21	1.76	0.49
1:A:306:LEU:HD23	1:A:563:LYS:HD3	1.95	0.48
1:A:393:LEU:HD21	1:A:721:MET:HB3	1.94	0.48

*Continued on next page...*



*Continued from previous page...*

Atom-1	Atom-2	Interatomic distance (Å)	Clash overlap (Å)
1:A:262:VAL:HG23	1:A:334:LEU:HD21	1.94	0.48
1:A:305:LEU:O	1:A:313:LYS:NZ	2.47	0.47
1:A:108:TRP:O	1:A:113:LYS:NZ	2.25	0.47
1:A:81:VAL:O	1:A:87:GLN:NE2	2.41	0.47
1:A:412:MET:O	1:A:416:ILE:HG13	2.15	0.47
1:A:10:TYR:O	1:A:13:ARG:NH1	2.42	0.47
1:A:40:GLN:NE2	2:A:1102:OHJ:O17	2.48	0.47
1:A:86:TRP:O	1:A:90:VAL:HG22	2.14	0.47
1:A:484:VAL:HG21	1:A:533:LEU:HD23	1.96	0.47
1:A:685:ILE:O	1:A:689:VAL:HG23	2.15	0.46
1:A:394:VAL:HG11	1:A:669:ARG:HA	1.96	0.46
1:A:213:LEU:O	1:A:217:ILE:HG12	2.16	0.46
1:A:265:PHE:HZ	1:A:342:GLY:HA2	1.80	0.45
1:A:427:ILE:HG13	1:A:431:TYR:CD2	2.51	0.45
1:A:169:ALA:O	1:A:173:PRO:HG2	2.16	0.45
1:A:208:VAL:HG11	1:A:348:LEU:HD23	1.97	0.45
1:A:306:LEU:HD11	1:A:566:LEU:HD23	1.98	0.45
1:A:201:LEU:HA	1:A:204:VAL:HG12	1.99	0.45
1:A:654:MET:HE2	1:A:668:ILE:HA	1.98	0.45
1:A:208:VAL:HG12	1:A:348:LEU:O	2.17	0.44
1:A:10:TYR:HD1	1:A:339:ALA:HB1	1.82	0.44
1:A:98:VAL:HG21	1:A:108:TRP:HD1	1.82	0.44
1:A:134:PHE:HZ	1:A:452:PHE:CD2	2.36	0.44
1:A:462:LYS:HG2	1:A:513:VAL:HG22	2.00	0.44
1:A:13:ARG:HD2	1:A:340:ILE:HG13	1.98	0.44
1:A:69:VAL:HG13	1:A:137:ILE:HB	2.00	0.44
1:A:497:MET:HE3	1:A:497:MET:HB2	1.81	0.43
1:A:149:LYS:O	1:A:153:VAL:HG23	2.19	0.43
1:A:484:VAL:HG23	1:A:536:LEU:HD21	2.01	0.43
1:A:662:MET:HB3	1:A:666:GLU:HB2	2.01	0.43
1:A:415:LEU:O	1:A:418:PRO:HD2	2.19	0.43
1:A:714:LEU:O	1:A:718:ILE:HG22	2.18	0.43
1:A:330:SER:O	1:A:334:LEU:HB3	2.19	0.43
1:A:653:ARG:HA	1:A:653:ARG:HD2	1.74	0.43
1:A:241:PHE:C	1:A:244:PRO:HD2	2.39	0.42
1:A:25:LEU:O	1:A:29:VAL:HG23	2.20	0.42
1:A:342:GLY:O	1:A:345:VAL:HG12	2.20	0.42
1:A:579:MET:SD	1:A:589:PRO:HA	2.60	0.42
1:A:432:LEU:HD22	1:A:436:ASN:ND2	2.33	0.42
1:A:761:LYS:HD2	1:A:761:LYS:HA	1.82	0.42
1:A:72:ILE:HD11	1:A:445:PHE:HB2	2.01	0.42

*Continued on next page...*

Continued from previous page...

Atom-1	Atom-2	Interatomic distance (Å)	Clash overlap (Å)
1:A:433:PRO:HD3	1:A:697:ASP:O	2.19	0.42
1:A:79:LYS:HD3	1:A:83:ASP:OD2	2.20	0.41
1:A:371:TRP:CZ2	1:A:375:LYS:HD3	2.55	0.41
1:A:575:THR:O	1:A:579:MET:HG3	2.21	0.41
1:A:698:LEU:HG	1:A:700:MET:HG2	2.01	0.41
1:A:311:PHE:O	1:A:315:ILE:HG12	2.20	0.41
1:A:245:VAL:HG21	1:A:315:ILE:HD12	2.02	0.41
1:A:49:GLN:NE2	1:A:545:PHE:HA	2.30	0.41
1:A:79:LYS:H	1:A:79:LYS:HG2	1.71	0.41
1:A:296:ILE:HG21	1:A:644:THR:CG2	2.50	0.41
1:A:520:LEU:H	1:A:520:LEU:HD23	1.85	0.41
1:A:74:THR:O	1:A:162:ASN:ND2	2.53	0.41
1:A:201:LEU:HB3	1:A:211:ALA:HB1	2.02	0.41
1:A:366:ARG:HE	1:A:366:ARG:HB3	1.57	0.41
1:A:398:MET:HG2	1:A:729:LYS:HB2	2.02	0.40
1:A:177:GLU:O	1:A:181:THR:HG23	2.21	0.40
1:A:241:PHE:O	1:A:244:PRO:HD2	2.22	0.40
1:A:430:LYS:HG2	1:A:439:ARG:NH2	2.37	0.40

There are no symmetry-related clashes.

## 5.3 Torsion angles [i](#)

### 5.3.1 Protein backbone [i](#)

In the following table, the Percentiles column shows the percent Ramachandran outliers of the chain as a percentile score with respect to all PDB entries followed by that with respect to all EM entries.

The Analysed column shows the number of residues for which the backbone conformation was analysed, and the total number of residues.

Mol	Chain	Analysed	Favoured	Allowed	Outliers	Percentiles	
1	A	753/1013 (74%)	728 (97%)	25 (3%)	0	100	100

There are no Ramachandran outliers to report.

### 5.3.2 Protein sidechains [i](#)

In the following table, the Percentiles column shows the percent sidechain outliers of the chain as a percentile score with respect to all PDB entries followed by that with respect to all EM

entries.

The Analysed column shows the number of residues for which the sidechain conformation was analysed, and the total number of residues.

Mol	Chain	Analysed	Rotameric	Outliers	Percentiles	
1	A	620/818 (76%)	620 (100%)	0	100	100

There are no protein residues with a non-rotameric sidechain to report.

Sometimes sidechains can be flipped to improve hydrogen bonding and reduce clashes. All (2) such sidechains are listed below:

Mol	Chain	Res	Type
1	A	40	GLN
1	A	49	GLN

### 5.3.3 RNA ⓘ

There are no RNA molecules in this entry.

## 5.4 Non-standard residues in protein, DNA, RNA chains ⓘ

There are no non-standard protein/DNA/RNA residues in this entry.

## 5.5 Carbohydrates ⓘ

There are no monosaccharides in this entry.

## 5.6 Ligand geometry ⓘ

2 ligands are modelled in this entry.

In the following table, the Counts columns list the number of bonds (or angles) for which Mogul statistics could be retrieved, the number of bonds (or angles) that are observed in the model and the number of bonds (or angles) that are defined in the Chemical Component Dictionary. The Link column lists molecule types, if any, to which the group is linked. The Z score for a bond length (or angle) is the number of standard deviations the observed value is removed from the expected value. A bond length (or angle) with  $|Z| > 2$  is considered an outlier worth inspection. RMSZ is the root-mean-square of all Z scores of the bond lengths (or angles).

Mol	Type	Chain	Res	Link	Bond lengths			Bond angles		
					Counts	RMSZ	# Z  > 2	Counts	RMSZ	# Z  > 2
2	OHJ	A	1102	-	73,73,77	1.53	11 (15%)	84,90,94	1.35	8 (9%)

Mol	Type	Chain	Res	Link	Bond lengths			Bond angles		
					Counts	RMSZ	# Z  > 2	Counts	RMSZ	# Z  > 2
2	OHJ	A	1101	-	70,70,77	1.57	13 (18%)	80,87,94	1.66	13 (16%)

In the following table, the Chirals column lists the number of chiral outliers, the number of chiral centers analysed, the number of these observed in the model and the number defined in the Chemical Component Dictionary. Similar counts are reported in the Torsion and Rings columns. '-' means no outliers of that kind were identified.

Mol	Type	Chain	Res	Link	Chirals	Torsions	Rings
2	OHJ	A	1102	-	-	28/62/107/111	0/3/3/3
2	OHJ	A	1101	-	-	35/59/104/111	0/3/3/3

All (24) bond length outliers are listed below:

Mol	Chain	Res	Type	Atoms	Z	Observed(Å)	Ideal(Å)
2	A	1101	OHJ	O05-C04	4.99	1.54	1.41
2	A	1102	OHJ	O05-C04	4.80	1.54	1.41
2	A	1102	OHJ	O23-C24	4.53	1.42	1.33
2	A	1101	OHJ	O23-C24	4.32	1.42	1.33
2	A	1101	OHJ	O13-C12	4.15	1.54	1.44
2	A	1102	OHJ	O13-C12	4.05	1.54	1.44
2	A	1102	OHJ	O07-C04	-3.92	1.30	1.41
2	A	1101	OHJ	O07-C04	-3.72	1.31	1.41
2	A	1102	OHJ	C21-C12	-2.66	1.43	1.51
2	A	1102	OHJ	O18-C09	2.61	1.49	1.43
2	A	1101	OHJ	O17-C02	2.60	1.49	1.43
2	A	1102	OHJ	O19-C10	2.55	1.49	1.43
2	A	1101	OHJ	C09-C10	-2.52	1.45	1.52
2	A	1102	OHJ	O17-C02	2.50	1.48	1.43
2	A	1102	OHJ	O13-C08	2.47	1.48	1.41
2	A	1101	OHJ	O19-C10	2.47	1.48	1.43
2	A	1101	OHJ	C21-C12	-2.47	1.43	1.51
2	A	1101	OHJ	O18-C09	2.38	1.48	1.43
2	A	1101	OHJ	C02-C01	-2.33	1.46	1.52
2	A	1102	OHJ	C02-C01	-2.28	1.46	1.52
2	A	1101	OHJ	O13-C08	2.22	1.47	1.41
2	A	1102	OHJ	C09-C10	-2.11	1.47	1.52
2	A	1101	OHJ	C11-C12	2.02	1.57	1.53
2	A	1101	OHJ	C45-C43	2.02	1.56	1.52

All (21) bond angle outliers are listed below:

Mol	Chain	Res	Type	Atoms	Z	Observed(°)	Ideal(°)
2	A	1101	OHJ	O23-C24-C26	8.96	123.49	111.36
2	A	1102	OHJ	O23-C24-C26	6.26	119.84	111.36
2	A	1101	OHJ	C28-C27-C26	-3.77	107.52	114.28
2	A	1101	OHJ	O07-C08-C09	3.32	116.70	108.10
2	A	1102	OHJ	C71-C68-C69	-3.19	115.22	120.75
2	A	1101	OHJ	O23-C24-O25	-3.13	118.21	124.13
2	A	1101	OHJ	O18-C09-C10	-2.90	103.64	110.35
2	A	1101	OHJ	O25-C24-C26	-2.87	118.29	124.67
2	A	1101	OHJ	C10-C11-C12	2.66	114.98	110.24
2	A	1101	OHJ	C60-C61-C67	-2.57	106.47	115.17
2	A	1102	OHJ	C08-O07-C04	-2.54	109.89	114.42
2	A	1101	OHJ	O05-C06-C01	2.51	114.25	109.69
2	A	1102	OHJ	C46-C45-C43	-2.46	110.14	114.18
2	A	1101	OHJ	C14-C06-C01	-2.46	107.25	113.00
2	A	1102	OHJ	C28-C27-C26	-2.25	110.24	114.28
2	A	1102	OHJ	C08-C09-C10	2.25	114.68	110.00
2	A	1101	OHJ	C04-C03-C02	2.16	114.49	110.00
2	A	1102	OHJ	O23-C24-O25	-2.12	120.12	124.13
2	A	1101	OHJ	O20-C11-C10	-2.11	105.47	110.35
2	A	1102	OHJ	O25-C24-C26	-2.08	120.04	124.67
2	A	1101	OHJ	O23-C21-C12	2.02	112.70	108.43

There are no chirality outliers.

All (63) torsion outliers are listed below:

Mol	Chain	Res	Type	Atoms
2	A	1101	OHJ	O23-C24-C26-C43
2	A	1101	OHJ	O25-C24-C26-C43
2	A	1101	OHJ	C24-C26-C27-C28
2	A	1101	OHJ	C09-C08-O07-C04
2	A	1101	OHJ	C26-C43-C45-C46
2	A	1102	OHJ	C09-C08-O07-C04
2	A	1102	OHJ	O13-C08-O07-C04
2	A	1102	OHJ	C26-C43-C45-C46
2	A	1102	OHJ	O44-C43-C45-C46
2	A	1102	OHJ	C60-C61-C67-C68
2	A	1101	OHJ	O05-C06-C14-O15
2	A	1102	OHJ	C32-C33-C34-C35
2	A	1101	OHJ	C01-C06-C14-O15
2	A	1101	OHJ	C52-C53-C54-C55
2	A	1101	OHJ	C49-C50-C51-C52
2	A	1101	OHJ	C58-C59-C60-C61
2	A	1102	OHJ	C54-C55-C56-C57

*Continued on next page...*

*Continued from previous page...*

Mol	Chain	Res	Type	Atoms
2	A	1101	OHJ	C28-C29-C30-C31
2	A	1101	OHJ	C53-C54-C55-C56
2	A	1102	OHJ	C28-C29-C30-C31
2	A	1102	OHJ	C30-C31-C32-C33
2	A	1102	OHJ	C50-C51-C52-C53
2	A	1101	OHJ	C32-C33-C34-C35
2	A	1101	OHJ	O44-C43-C45-C46
2	A	1102	OHJ	O13-C12-C21-O23
2	A	1102	OHJ	C11-C12-C21-O23
2	A	1102	OHJ	C57-C58-C59-C60
2	A	1101	OHJ	C48-C49-C50-C51
2	A	1101	OHJ	C59-C60-C61-C67
2	A	1101	OHJ	O13-C12-C21-O23
2	A	1102	OHJ	C52-C53-C54-C55
2	A	1102	OHJ	C48-C49-C50-C51
2	A	1101	OHJ	C60-C61-C67-C68
2	A	1102	OHJ	C34-C35-C36-C37
2	A	1102	OHJ	C26-C27-C28-C29
2	A	1101	OHJ	C50-C51-C52-C53
2	A	1101	OHJ	C45-C46-C47-C48
2	A	1101	OHJ	C31-C32-C33-C34
2	A	1101	OHJ	C55-C56-C57-C58
2	A	1101	OHJ	C34-C35-C36-C37
2	A	1101	OHJ	C36-C37-C38-C39
2	A	1102	OHJ	O23-C24-C26-C27
2	A	1101	OHJ	C03-C04-O07-C08
2	A	1102	OHJ	C58-C59-C60-C61
2	A	1102	OHJ	C26-C24-O23-C21
2	A	1101	OHJ	O05-C04-O07-C08
2	A	1101	OHJ	C43-C45-C46-C47
2	A	1102	OHJ	O25-C24-C26-C27
2	A	1101	OHJ	C33-C34-C35-C36
2	A	1102	OHJ	C60-C61-C67-C71
2	A	1102	OHJ	C27-C28-C29-C30
2	A	1101	OHJ	C26-C27-C28-C29
2	A	1102	OHJ	O25-C24-O23-C21
2	A	1101	OHJ	C54-C55-C56-C57
2	A	1101	OHJ	C11-C12-C21-O23
2	A	1101	OHJ	O13-C08-O07-C04
2	A	1102	OHJ	C59-C60-C61-C67
2	A	1102	OHJ	C31-C32-C33-C34
2	A	1102	OHJ	C45-C46-C47-C48

*Continued on next page...*

*Continued from previous page...*

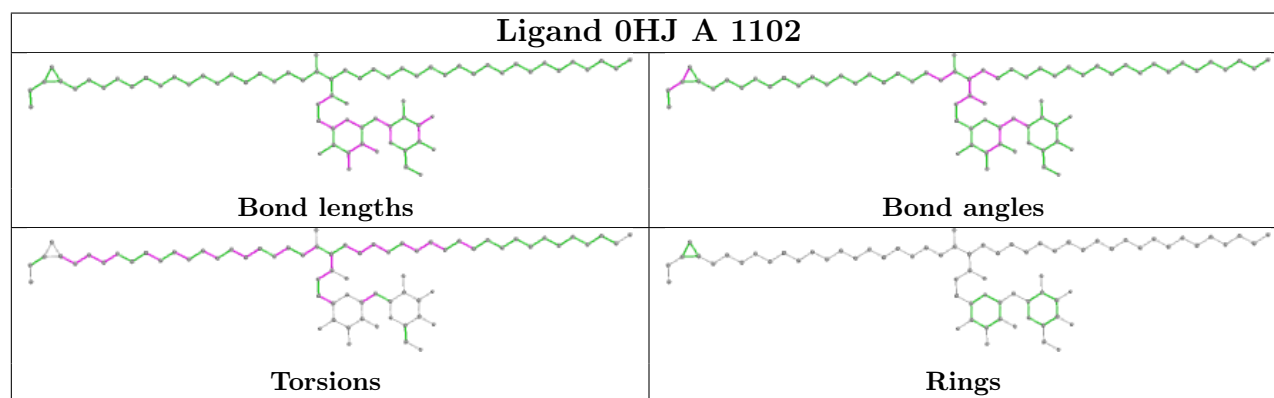
Mol	Chain	Res	Type	Atoms
2	A	1101	OHJ	C46-C47-C48-C49
2	A	1101	OHJ	C35-C36-C37-C38
2	A	1102	OHJ	C47-C48-C49-C50
2	A	1101	OHJ	C60-C61-C67-C71

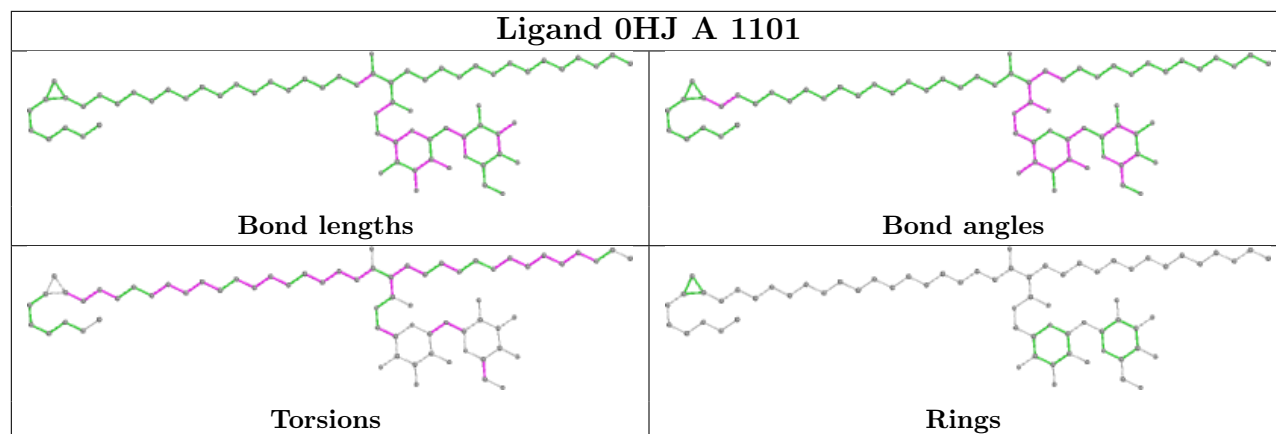
There are no ring outliers.

1 monomer is involved in 1 short contact:

Mol	Chain	Res	Type	Clashes	Symm-Clashes
2	A	1102	OHJ	1	0

The following is a two-dimensional graphical depiction of Mogul quality analysis of bond lengths, bond angles, torsion angles, and ring geometry for all instances of the Ligand of Interest. In addition, ligands with molecular weight > 250 and outliers as shown on the validation Tables will also be included. For torsion angles, if less than 5% of the Mogul distribution of torsion angles is within 10 degrees of the torsion angle in question, then that torsion angle is considered an outlier. Any bond that is central to one or more torsion angles identified as an outlier by Mogul will be highlighted in the graph. For rings, the root-mean-square deviation (RMSD) between the ring in question and similar rings identified by Mogul is calculated over all ring torsion angles. If the average RMSD is greater than 60 degrees and the minimal RMSD between the ring in question and any Mogul-identified rings is also greater than 60 degrees, then that ring is considered an outlier. The outliers are highlighted in purple. The color gray indicates Mogul did not find sufficient equivalents in the CSD to analyse the geometry.





## 5.7 Other polymers [i](#)

There are no such residues in this entry.

## 5.8 Polymer linkage issues [i](#)

There are no chain breaks in this entry.



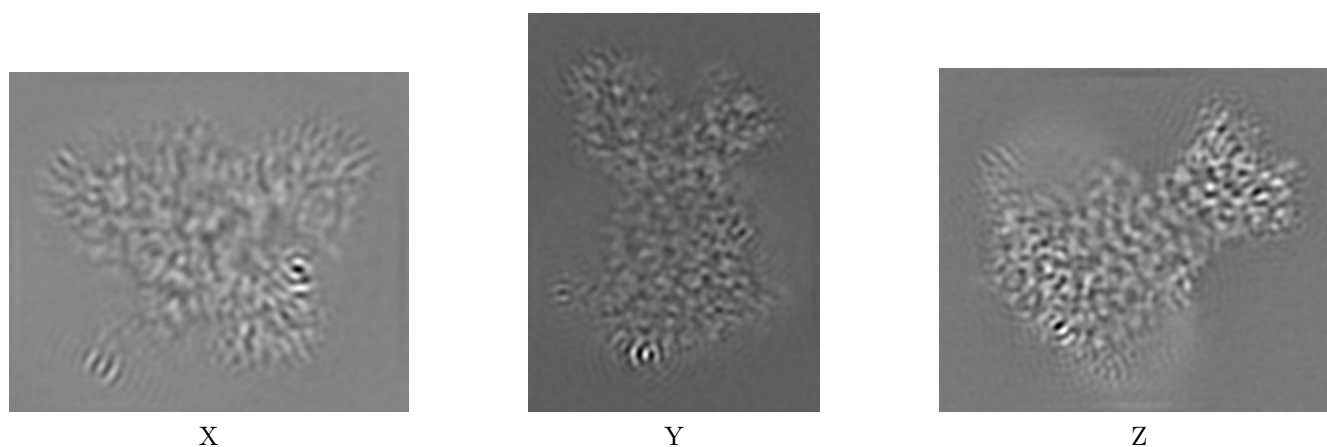
## 6 Map visualisation [i](#)

This section contains visualisations of the EMDB entry EMD-24206. These allow visual inspection of the internal detail of the map and identification of artifacts.

No raw map or half-maps were deposited for this entry and therefore no images, graphs, etc. pertaining to the raw map can be shown.

### 6.1 Orthogonal projections [i](#)

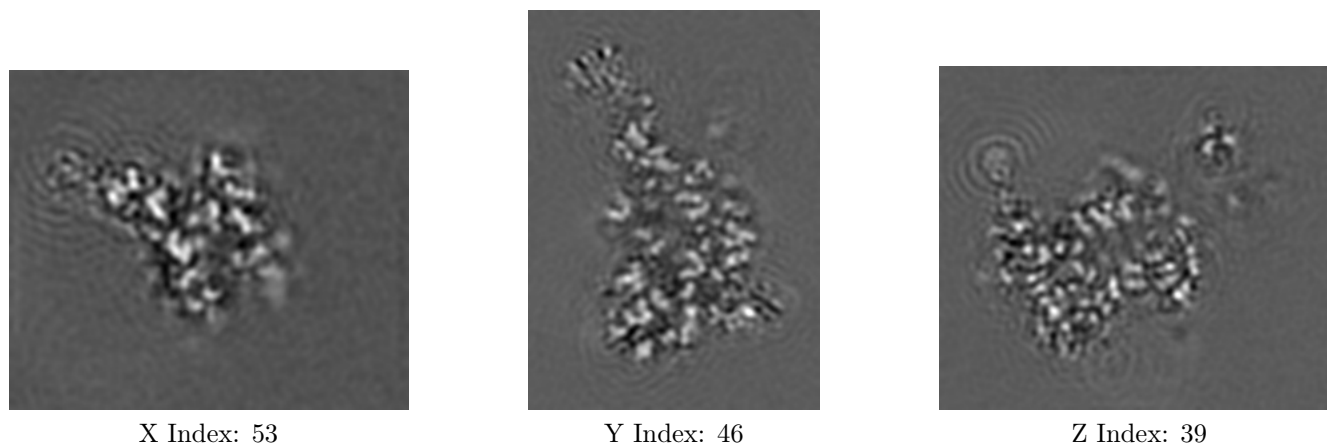
#### 6.1.1 Primary map



The images above show the map projected in three orthogonal directions.

### 6.2 Central slices [i](#)

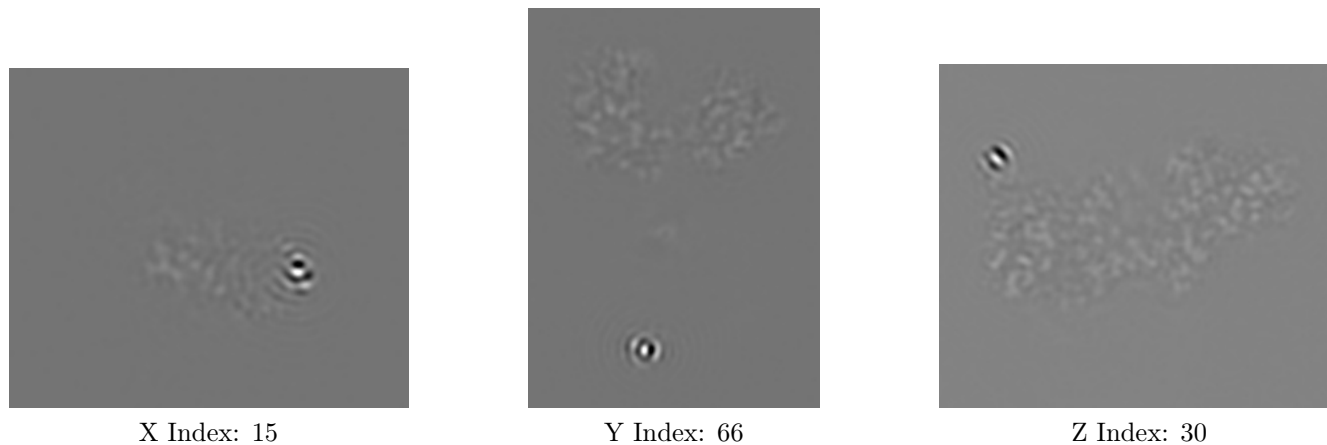
#### 6.2.1 Primary map



The images above show central slices of the map in three orthogonal directions.

## 6.3 Largest variance slices [i](#)

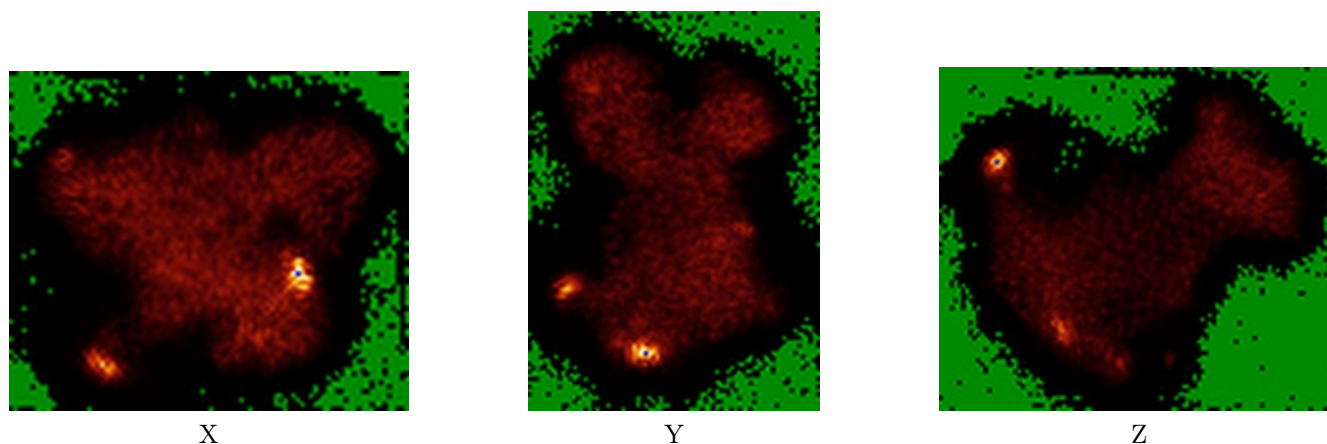
### 6.3.1 Primary map



The images above show the largest variance slices of the map in three orthogonal directions.

## 6.4 Orthogonal standard-deviation projections (False-color) [i](#)

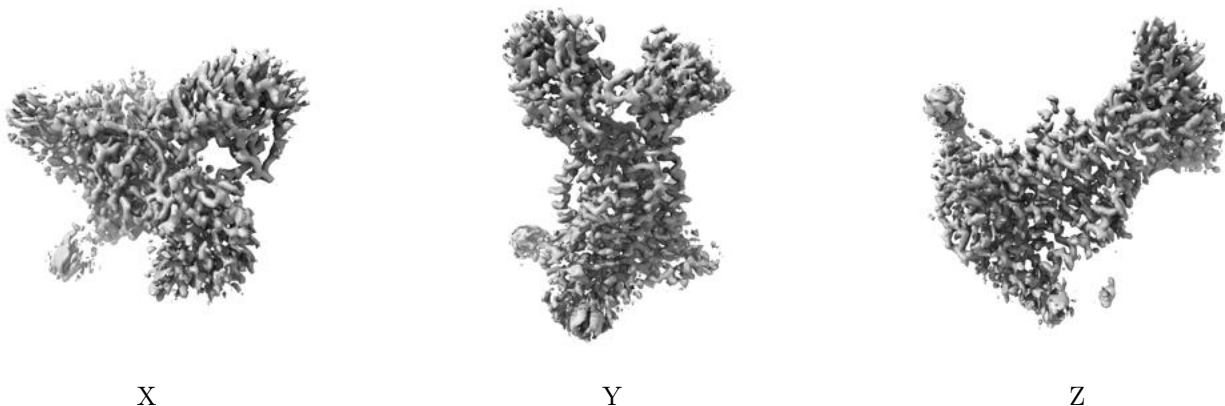
### 6.4.1 Primary map



The images above show the map standard deviation projections with false color in three orthogonal directions. Minimum values are shown in green, max in blue, and dark to light orange shades represent small to large values respectively.

## 6.5 Orthogonal surface views [i](#)

### 6.5.1 Primary map



The images above show the 3D surface view of the map at the recommended contour level 1.0. These images, in conjunction with the slice images, may facilitate assessment of whether an appropriate contour level has been provided.

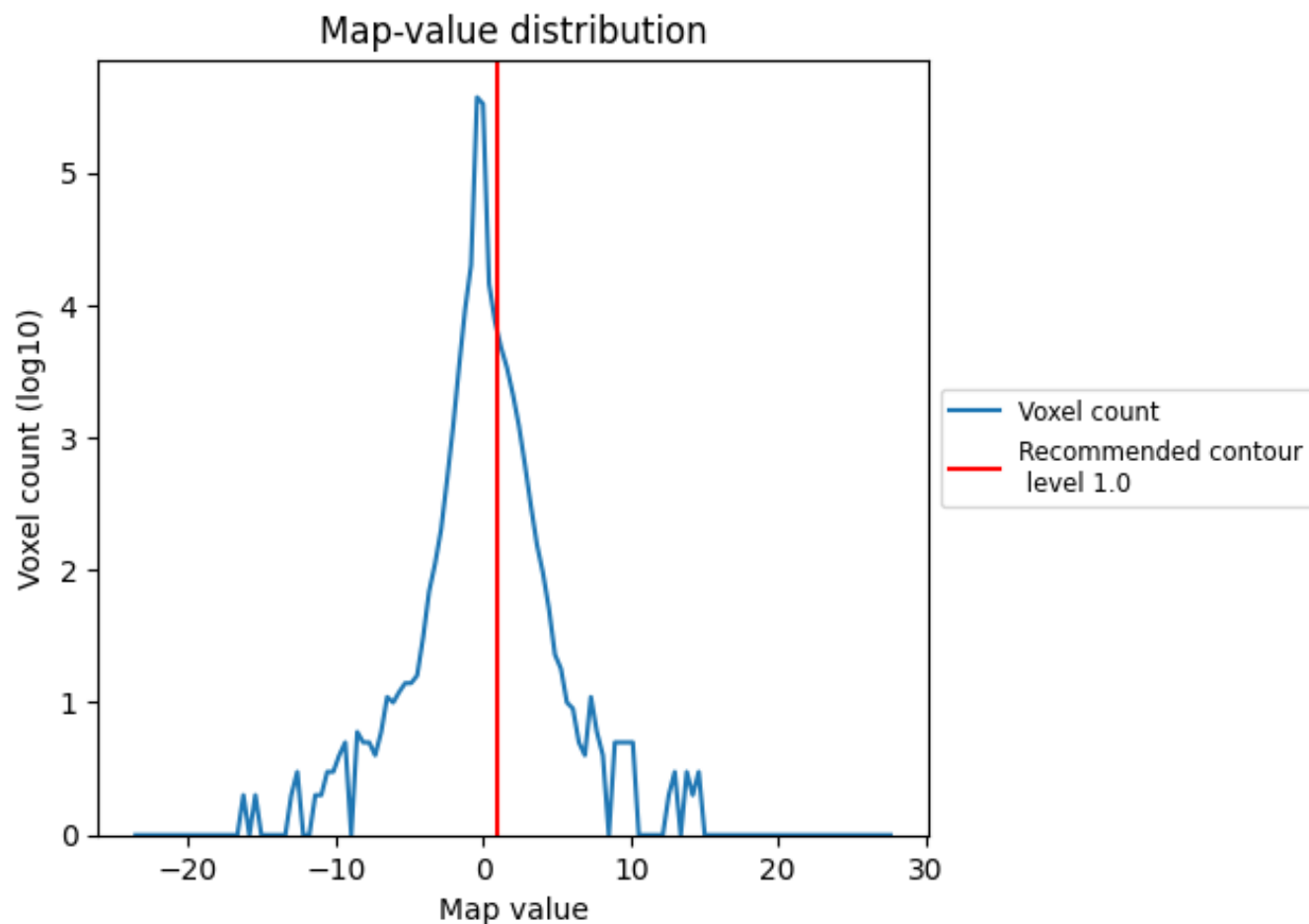
## 6.6 Mask visualisation [i](#)

This section was not generated. No masks/segmentation were deposited.

## 7 Map analysis [i](#)

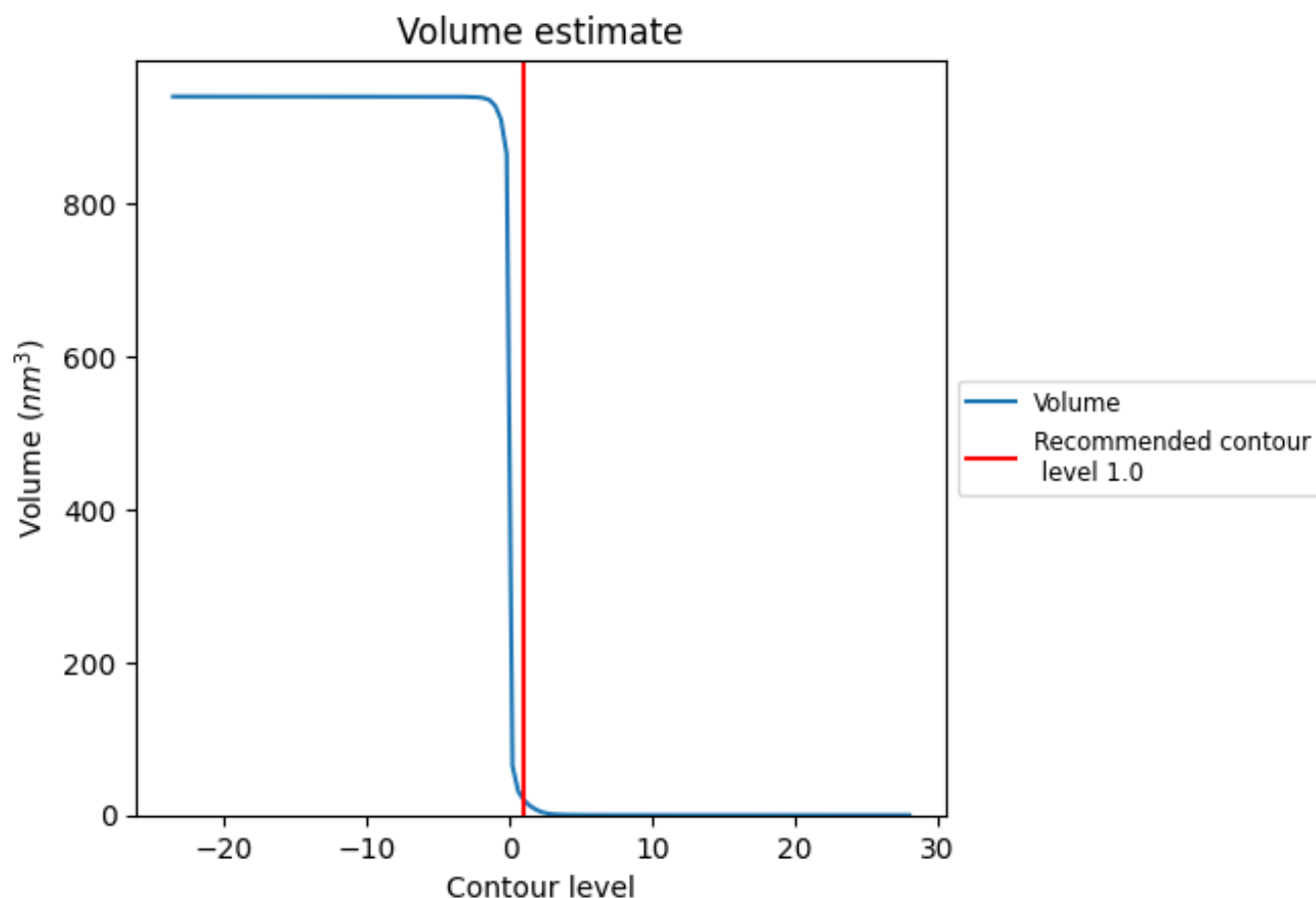
This section contains the results of statistical analysis of the map.

### 7.1 Map-value distribution [i](#)



The map-value distribution is plotted in 128 intervals along the x-axis. The y-axis is logarithmic. A spike in this graph at zero usually indicates that the volume has been masked.

## 7.2 Volume estimate [i](#)



The volume at the recommended contour level is 20 nm<sup>3</sup>; this corresponds to an approximate mass of 18 kDa.

The volume estimate graph shows how the enclosed volume varies with the contour level. The recommended contour level is shown as a vertical line and the intersection between the line and the curve gives the volume of the enclosed surface at the given level.

## 7.3 Rotationally averaged power spectrum [i](#)

This section was not generated. The rotationally averaged power spectrum is only generated for cubic maps.

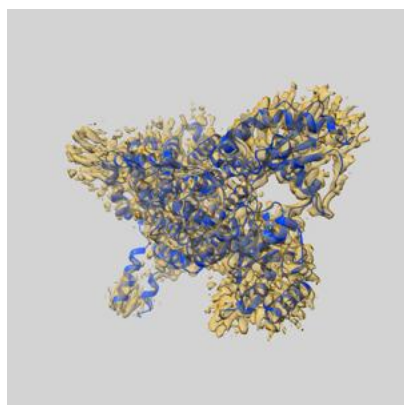
## 8 Fourier-Shell correlation ⓘ

This section was not generated. No FSC curve or half-maps provided.

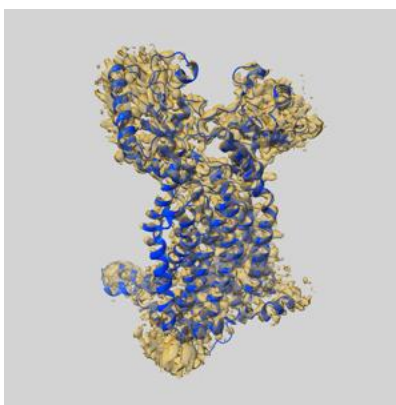
## 9 Map-model fit [i](#)

This section contains information regarding the fit between EMDB map EMD-24206 and PDB model 7N6B. Per-residue inclusion information can be found in section [3](#) on page [4](#).

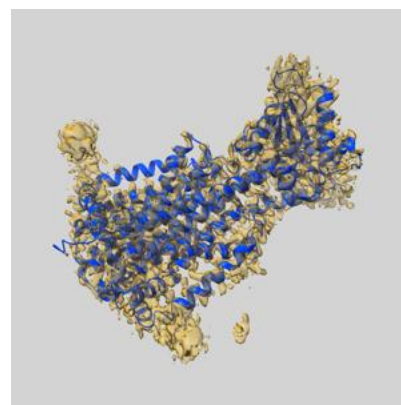
### 9.1 Map-model overlay [i](#)



X



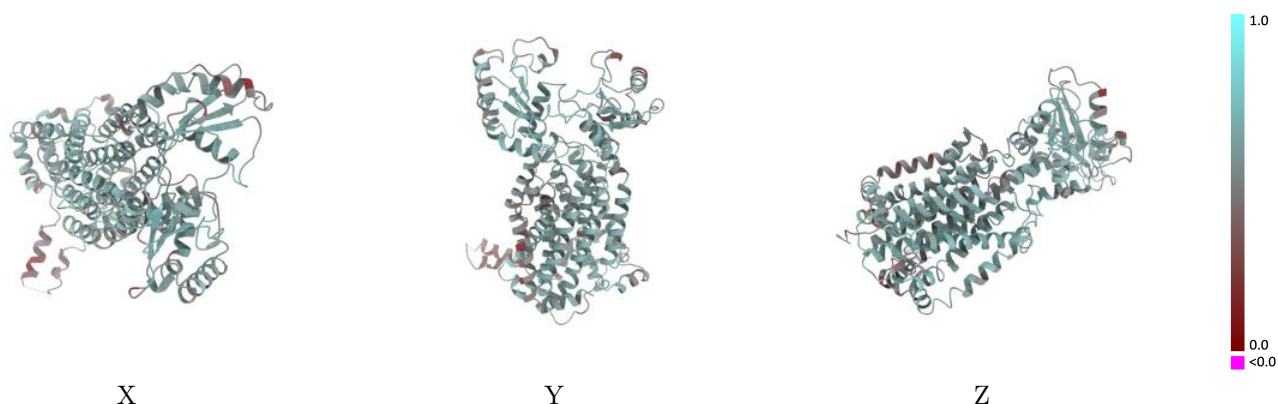
Y



Z

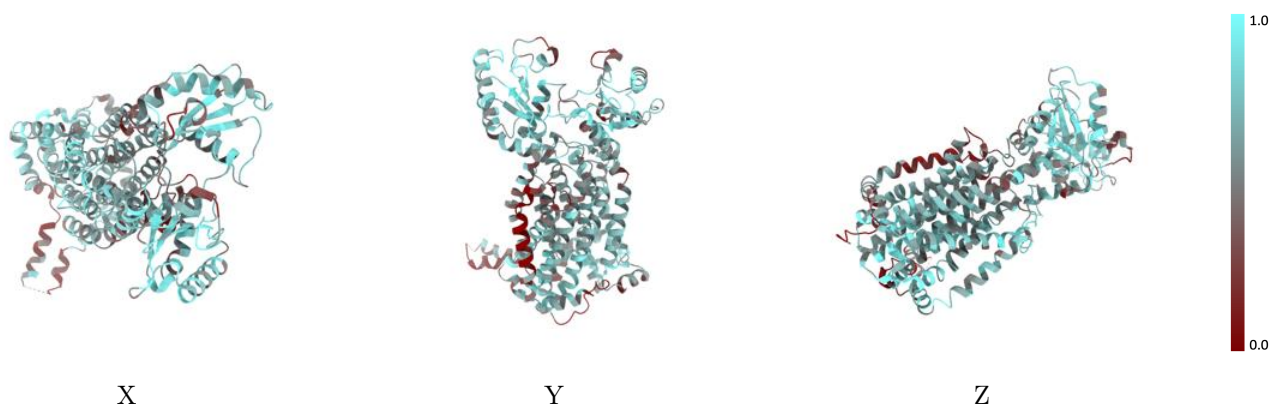
The images above show the 3D surface view of the map at the recommended contour level 1.0 at 50% transparency in yellow overlaid with a ribbon representation of the model coloured in blue. These images allow for the visual assessment of the quality of fit between the atomic model and the map.

## 9.2 Q-score mapped to coordinate model [i](#)



The images above show the model with each residue coloured according to its Q-score. This shows their resolvability in the map with higher Q-score values reflecting better resolvability. Please note: Q-score is calculating the resolvability of atoms, and thus high values are only expected at resolutions at which atoms can be resolved. Low Q-score values may therefore be expected for many entries.

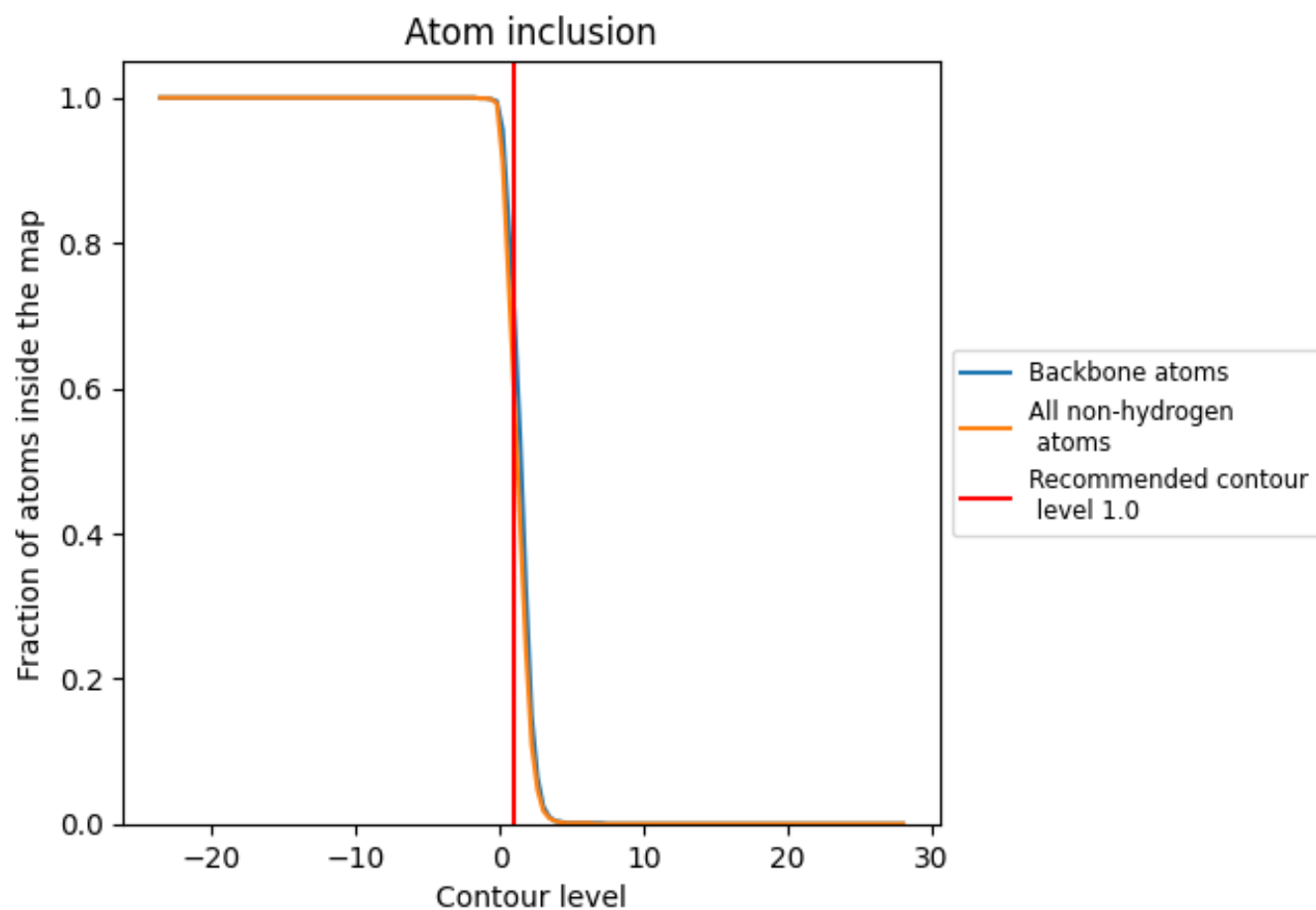
## 9.3 Atom inclusion mapped to coordinate model [i](#)



The images above show the model with each residue coloured according to its atom inclusion. This shows to what extent they are inside the map at the recommended contour level (1.0).



## 9.4 Atom inclusion [i](#)



At the recommended contour level, 71% of all backbone atoms, 60% of all non-hydrogen atoms, are inside the map.

9.5 Map-model fit summary ⓘ

The table lists the average atom inclusion at the recommended contour level (1.0) and Q-score for the entire model and for each chain.

Chain	Atom inclusion	Q-score
All	<div></div> 0.5950	<div></div> 0.5580
A	<div></div> 0.5950	<div></div> 0.5580

