



Full wwPDB X-ray Structure Validation Report ⓘ

Jun 11, 2024 – 07:17 PM EDT

PDB ID : 6N1S
Title : Toxoplasma gondii TS-DHFR in complex with selective inhibitor 29
Authors : Hopper, A.T.; Brockman, A.; Wise, A.; Gould, J.; Barks, J.; Radke, J.B.; Sibley, L.D.; Zou, Y.; Thomas, S.B.
Deposited on : 2018-11-11
Resolution : 3.00 Å(reported)

This is a Full wwPDB X-ray Structure Validation Report for a publicly released PDB entry.

We welcome your comments at validation@mail.wwpdb.org

A user guide is available at

<https://www.wwpdb.org/validation/2017/XrayValidationReportHelp>

with specific help available everywhere you see the ⓘ symbol.

The types of validation reports are described at

<http://www.wwpdb.org/validation/2017/FAQs#types>.

The following versions of software and data (see [references ⓘ](#)) were used in the production of this report:

MolProbity	:	4.02b-467
Mogul	:	1.8.5 (274361), CSD as541be (2020)
Xtriage (Phenix)	:	1.13
EDS	:	2.36.2
buster-report	:	1.1.7 (2018)
Percentile statistics	:	20191225.v01 (using entries in the PDB archive December 25th 2019)
Refmac	:	5.8.0158
CCP4	:	7.0.044 (Gargrove)
Ideal geometry (proteins)	:	Engh & Huber (2001)
Ideal geometry (DNA, RNA)	:	Parkinson et al. (1996)
Validation Pipeline (wwPDB-VP)	:	2.36.2

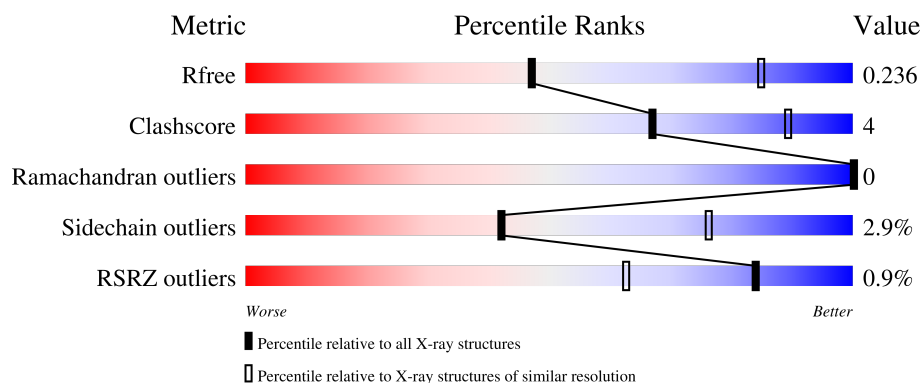
1 Overall quality at a glance

The following experimental techniques were used to determine the structure:

X-RAY DIFFRACTION



The reported resolution of this entry is 3.00 Å.

Percentile scores (ranging between 0-100) for global validation metrics of the entry are shown in the following graphic. The table shows the number of entries on which the scores are based.



Metric	Whole archive (#Entries)	Similar resolution (#Entries, resolution range(Å))
R_{free}	130704	2092 (3.00-3.00)
Clashscore	141614	2416 (3.00-3.00)
Ramachandran outliers	138981	2333 (3.00-3.00)
Sidechain outliers	138945	2336 (3.00-3.00)
RSRZ outliers	127900	1990 (3.00-3.00)

The table below summarises the geometric issues observed across the polymeric chains and their fit to the electron density. The red, orange, yellow and green segments of the lower bar indicate the fraction of residues that contain outliers for ≥ 3 , 2, 1 and 0 types of geometric quality criteria respectively. A grey segment represents the fraction of residues that are not modelled. The numeric value for each fraction is indicated below the corresponding segment, with a dot representing fractions $\leq 5\%$. The upper red bar (where present) indicates the fraction of residues that have poor fit to the electron density. The numeric value is given above the bar.

Mol	Chain	Length	Quality of chain
1	A	566	
1	B	566	

2 Entry composition

There are 6 unique types of molecules in this entry. The entry contains 8426 atoms, of which 0 are hydrogens and 0 are deuteriums.

In the tables below, the ZeroOcc column contains the number of atoms modelled with zero occupancy, the AltConf column contains the number of residues with at least one atom in alternate conformation and the Trace column contains the number of residues modelled with at most 2 atoms.

- Molecule 1 is a protein called Bifunctional dihydrofolate reductase-thymidylate synthase.

Mol	Chain	Residues	Atoms					ZeroOcc	AltConf	Trace
1	A	510	Total	C	N	O	S	0	0	0
			4080	2609	715	731	25			
1	B	510	Total	C	N	O	S	0	0	0
			4082	2608	714	735	25			

There are 88 discrepancies between the modelled and reference sequences:

Chain	Residue	Modelled	Actual	Comment	Reference
A	?	-	LEU	deletion	UNP Q07422
A	?	-	ASN	deletion	UNP Q07422
A	?	-	GLY	deletion	UNP Q07422
A	?	-	TRP	deletion	UNP Q07422
A	?	-	LEU	deletion	UNP Q07422
A	?	-	PRO	deletion	UNP Q07422
A	?	-	ARG	deletion	UNP Q07422
A	?	-	LYS	deletion	UNP Q07422
A	?	-	PHE	deletion	UNP Q07422
A	?	-	ALA	deletion	UNP Q07422
A	?	-	LYS	deletion	UNP Q07422
A	?	-	THR	deletion	UNP Q07422
A	?	-	GLY	deletion	UNP Q07422
A	?	-	ASP	deletion	UNP Q07422
A	?	-	SER	deletion	UNP Q07422
A	?	-	GLY	deletion	UNP Q07422
A	?	-	LEU	deletion	UNP Q07422
A	?	-	PRO	deletion	UNP Q07422
A	?	-	SER	deletion	UNP Q07422
A	?	-	PRO	deletion	UNP Q07422
A	?	-	SER	deletion	UNP Q07422
A	?	-	VAL	deletion	UNP Q07422
A	?	-	GLY	deletion	UNP Q07422
A	?	-	LYS	deletion	UNP Q07422
A	?	-	ARG	deletion	UNP Q07422

Continued on next page...

Continued from previous page...

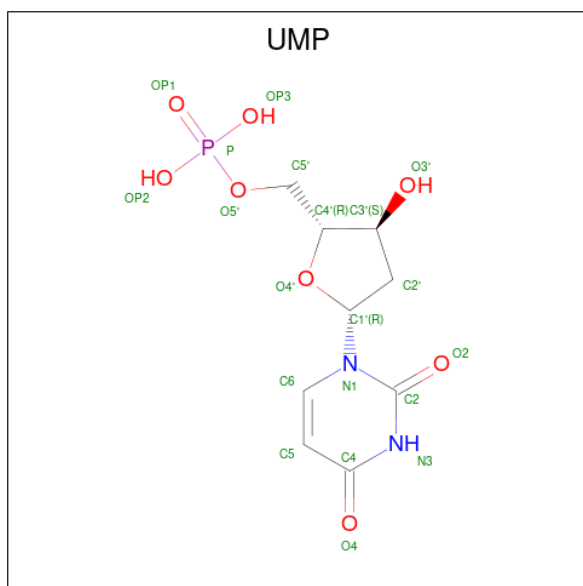
Chain	Residue	Modelled	Actual	Comment	Reference
A	?	-	GLN	deletion	UNP Q07422
A	?	-	ALA	deletion	UNP Q07422
A	?	-	ALA	deletion	UNP Q07422
A	?	-	ALA	deletion	UNP Q07422
A	?	-	PRO	deletion	UNP Q07422
A	?	-	ALA	deletion	UNP Q07422
A	?	-	GLU	deletion	UNP Q07422
A	?	-	SER	deletion	UNP Q07422
A	?	-	VAL	deletion	UNP Q07422
A	?	-	PHE	deletion	UNP Q07422
A	?	-	VAL	deletion	UNP Q07422
A	?	-	PRO	deletion	UNP Q07422
A	?	-	PHE	deletion	UNP Q07422
A	?	-	CYS	deletion	UNP Q07422
A	?	-	PRO	deletion	UNP Q07422
A	?	-	GLU	deletion	UNP Q07422
A	?	-	LEU	deletion	UNP Q07422
A	?	-	GLY	deletion	UNP Q07422
A	?	-	ARG	deletion	UNP Q07422
B	?	-	LEU	deletion	UNP Q07422
B	?	-	ASN	deletion	UNP Q07422
B	?	-	GLY	deletion	UNP Q07422
B	?	-	TRP	deletion	UNP Q07422
B	?	-	LEU	deletion	UNP Q07422
B	?	-	PRO	deletion	UNP Q07422
B	?	-	ARG	deletion	UNP Q07422
B	?	-	LYS	deletion	UNP Q07422
B	?	-	PHE	deletion	UNP Q07422
B	?	-	ALA	deletion	UNP Q07422
B	?	-	LYS	deletion	UNP Q07422
B	?	-	THR	deletion	UNP Q07422
B	?	-	GLY	deletion	UNP Q07422
B	?	-	ASP	deletion	UNP Q07422
B	?	-	SER	deletion	UNP Q07422
B	?	-	GLY	deletion	UNP Q07422
B	?	-	LEU	deletion	UNP Q07422
B	?	-	PRO	deletion	UNP Q07422
B	?	-	SER	deletion	UNP Q07422
B	?	-	PRO	deletion	UNP Q07422
B	?	-	SER	deletion	UNP Q07422
B	?	-	VAL	deletion	UNP Q07422
B	?	-	GLY	deletion	UNP Q07422

Continued on next page...

Continued from previous page...

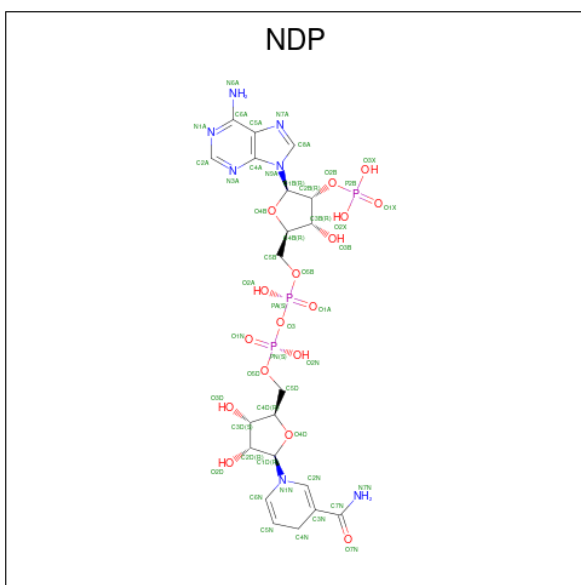
Chain	Residue	Modelled	Actual	Comment	Reference
B	?	-	LYS	deletion	UNP Q07422
B	?	-	ARG	deletion	UNP Q07422
B	?	-	GLN	deletion	UNP Q07422
B	?	-	ALA	deletion	UNP Q07422
B	?	-	ALA	deletion	UNP Q07422
B	?	-	ALA	deletion	UNP Q07422
B	?	-	PRO	deletion	UNP Q07422
B	?	-	ALA	deletion	UNP Q07422
B	?	-	GLU	deletion	UNP Q07422
B	?	-	SER	deletion	UNP Q07422
B	?	-	VAL	deletion	UNP Q07422
B	?	-	PHE	deletion	UNP Q07422
B	?	-	VAL	deletion	UNP Q07422
B	?	-	PRO	deletion	UNP Q07422
B	?	-	PHE	deletion	UNP Q07422
B	?	-	CYS	deletion	UNP Q07422
B	?	-	PRO	deletion	UNP Q07422
B	?	-	GLU	deletion	UNP Q07422
B	?	-	LEU	deletion	UNP Q07422
B	?	-	GLY	deletion	UNP Q07422
B	?	-	ARG	deletion	UNP Q07422

- Molecule 2 is 2'-DEOXYURIDINE 5'-MONOPHOSPHATE (three-letter code: UMP) (formula: $C_9H_{13}N_2O_8P$).



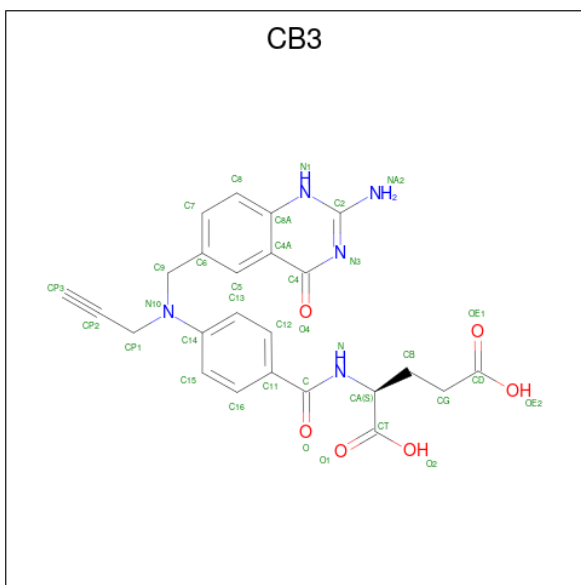
Mol	Chain	Residues	Atoms					ZeroOcc	AltConf
2	A	1	Total 20	C 9	N 2	O 8	P 1	0	0
2	B	1	Total 20	C 9	N 2	O 8	P 1	0	0

- Molecule 3 is NADPH DIHYDRO-NICOTINAMIDE-ADENINE-DINUCLEOTIDE PHOSPHATE (three-letter code: NDP) (formula: $C_{21}H_{30}N_7O_{17}P_3$).



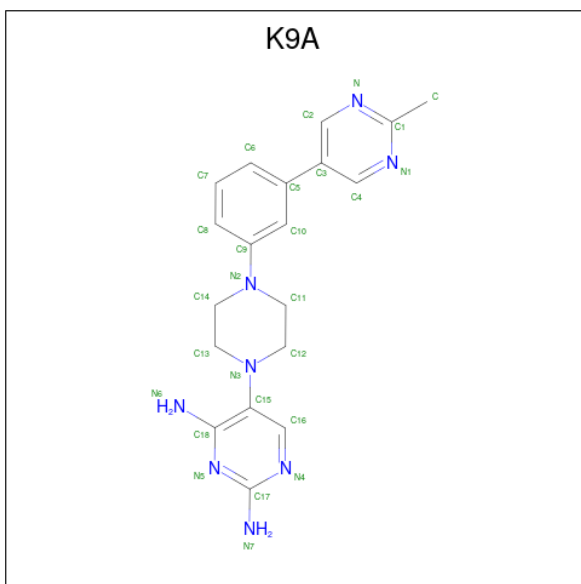
Mol	Chain	Residues	Atoms					ZeroOcc	AltConf
3	A	1	Total 48	C 21	N 7	O 17	P 3	0	0
3	B	1	Total 48	C 21	N 7	O 17	P 3	0	0

- Molecule 4 is 10-PROPARGYL-5,8-DIDEAZAFOLIC ACID (three-letter code: CB3) (formula: $C_{24}H_{23}N_5O_6$).



Mol	Chain	Residues	Atoms				ZeroOcc	AltConf
4	A	1	Total	C	N	O	0	0
			35	24	5	6		
4	B	1	Total	C	N	O	0	0
			35	24	5	6		

- Molecule 5 is 5-{4-[3-(2-methylpyrimidin-5-yl)phenyl]piperazin-1-yl}pyrimidine-2,4-diamine (three-letter code: K9A) (formula: C₁₉H₂₂N₈).



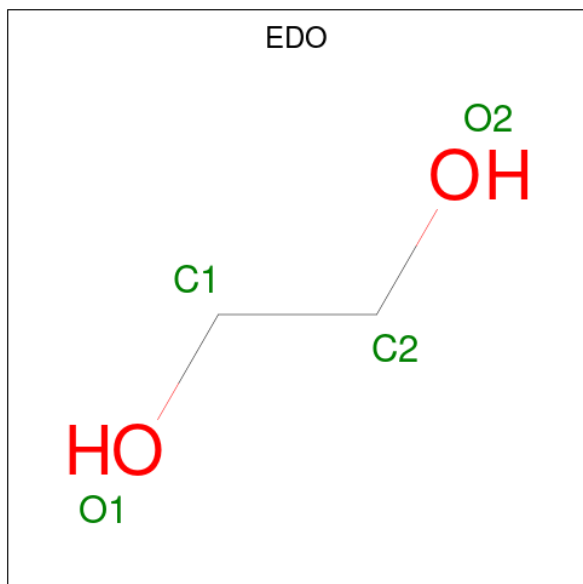
Mol	Chain	Residues	Atoms				ZeroOcc	AltConf
5	A	1	Total	C	N		0	0
			27	19	8			

Continued on next page...

Continued from previous page...

Mol	Chain	Residues	Atoms			ZeroOcc	AltConf
5	B	1	Total	C	N	0	0
			27	19	8		

- Molecule 6 is 1,2-ETHANEDIOL (three-letter code: EDO) (formula: $C_2H_6O_2$).

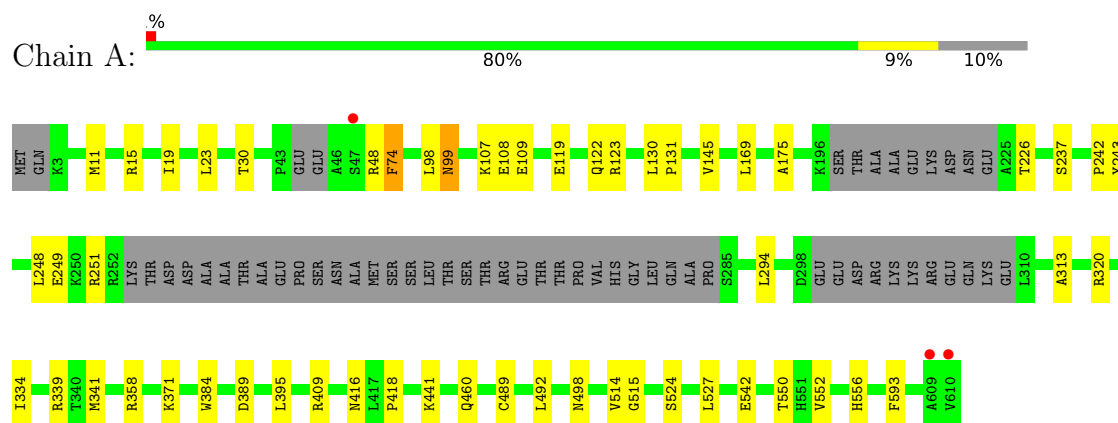


Mol	Chain	Residues	Atoms			ZeroOcc	AltConf
6	A	1	Total	C	O	0	0
			4	2	2		

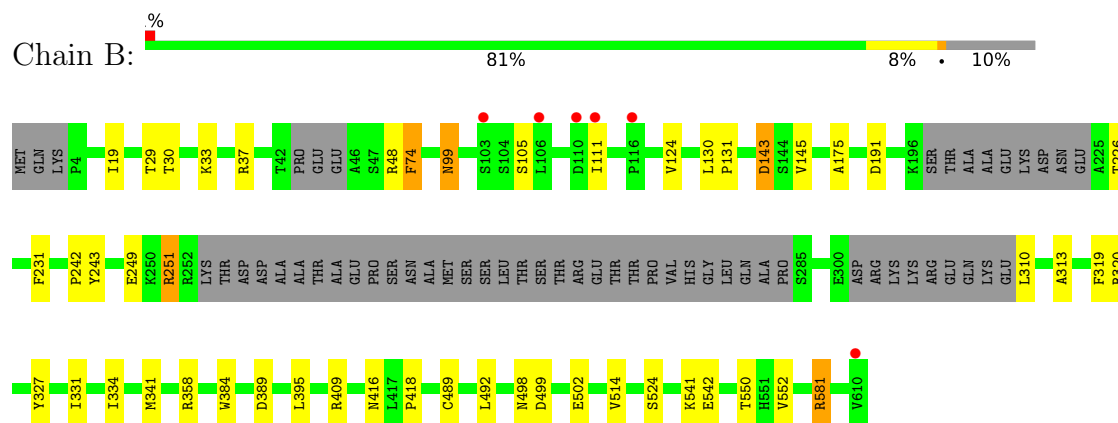
3 Residue-property plots [i](#)

These plots are drawn for all protein, RNA, DNA and oligosaccharide chains in the entry. The first graphic for a chain summarises the proportions of the various outlier classes displayed in the second graphic. The second graphic shows the sequence view annotated by issues in geometry and electron density. Residues are color-coded according to the number of geometric quality criteria for which they contain at least one outlier: green = 0, yellow = 1, orange = 2 and red = 3 or more. A red dot above a residue indicates a poor fit to the electron density ($RSRZ > 2$). Stretches of 2 or more consecutive residues without any outlier are shown as a green connector. Residues present in the sample, but not in the model, are shown in grey.

- Molecule 1: Bifunctional dihydrofolate reductase-thymidylate synthase



- Molecule 1: Bifunctional dihydrofolate reductase-thymidylate synthase



4 Data and refinement statistics

Property	Value	Source
Space group	P 21 21 21	Depositor
Cell constants a, b, c, α , β , γ	53.69Å 145.52Å 175.92Å 90.00° 90.00° 90.00°	Depositor
Resolution (Å)	39.60 – 3.00 39.60 – 3.00	Depositor EDS
% Data completeness (in resolution range)	87.7 (39.60-3.00) 87.8 (39.60-3.00)	Depositor EDS
R_{merge}	0.15	Depositor
R_{sym}	(Not available)	Depositor
$\langle I/\sigma(I) \rangle$ ¹	4.67 (at 3.01Å)	Xtriage
Refinement program	REFMAC	Depositor
R, R_{free}	0.207 , 0.241 0.205 , 0.236	Depositor DCC
R_{free} test set	1294 reflections (5.17%)	wwPDB-VP
Wilson B-factor (Å ²)	43.6	Xtriage
Anisotropy	0.246	Xtriage
Bulk solvent k_{sol} (e/Å ³), B_{sol} (Å ²)	0.29 , 18.1	EDS
L-test for twinning ²	$\langle L \rangle = 0.48$, $\langle L^2 \rangle = 0.32$	Xtriage
Estimated twinning fraction	No twinning to report.	Xtriage
F_o, F_c correlation	0.91	EDS
Total number of atoms	8426	wwPDB-VP
Average B, all atoms (Å ²)	47.0	wwPDB-VP

Xtriage's analysis on translational NCS is as follows: *The largest off-origin peak in the Patterson function is 4.58% of the height of the origin peak. No significant pseudotranslation is detected.*

¹Intensities estimated from amplitudes.

²Theoretical values of $\langle |L| \rangle$, $\langle L^2 \rangle$ for acentric reflections are 0.5, 0.333 respectively for untwinned datasets, and 0.375, 0.2 for perfectly twinned datasets.

5 Model quality [i](#)

5.1 Standard geometry [i](#)

Bond lengths and bond angles in the following residue types are not validated in this section: K9A, UMP, EDO, CB3, NDP

The Z score for a bond length (or angle) is the number of standard deviations the observed value is removed from the expected value. A bond length (or angle) with $|Z| > 5$ is considered an outlier worth inspection. RMSZ is the root-mean-square of all Z scores of the bond lengths (or angles).

Mol	Chain	Bond lengths		Bond angles	
		RMSZ	$\# Z > 5$	RMSZ	$\# Z > 5$
1	A	0.52	0/4178	0.63	0/5657
1	B	0.58	1/4179 (0.0%)	0.66	1/5657 (0.0%)
All	All	0.55	1/8357 (0.0%)	0.65	1/11314 (0.0%)

All (1) bond length outliers are listed below:

Mol	Chain	Res	Type	Atoms	Z	Observed(Å)	Ideal(Å)
1	B	581	ARG	CZ-NH2	14.84	1.52	1.33

All (1) bond angle outliers are listed below:

Mol	Chain	Res	Type	Atoms	Z	Observed(°)	Ideal(°)
1	B	581	ARG	NE-CZ-NH1	-8.71	115.95	120.30

There are no chirality outliers.

There are no planarity outliers.

5.2 Too-close contacts [i](#)

In the following table, the Non-H and H(model) columns list the number of non-hydrogen atoms and hydrogen atoms in the chain respectively. The H(added) column lists the number of hydrogen atoms added and optimized by MolProbity. The Clashes column lists the number of clashes within the asymmetric unit, whereas Symm-Clashes lists symmetry-related clashes.

Mol	Chain	Non-H	H(model)	H(added)	Clashes	Symm-Clashes
1	A	4080	0	4054	31	0
1	B	4082	0	4047	32	0
2	A	20	0	11	1	0
2	B	20	0	11	2	0

Continued on next page...

Continued from previous page...

Mol	Chain	Non-H	H(model)	H(added)	Clashes	Symm-Clashes
3	A	48	0	26	0	0
3	B	48	0	26	1	0
4	A	35	0	21	2	0
4	B	35	0	21	5	0
5	A	27	0	0	0	0
5	B	27	0	0	0	0
6	A	4	0	6	1	0
All	All	8426	0	8223	65	0

The all-atom clashscore is defined as the number of clashes found per 1000 atoms (including hydrogen atoms). The all-atom clashscore for this structure is 4.

All (65) close contacts within the same asymmetric unit are listed below, sorted by their clash magnitude.

Atom-1	Atom-2	Interatomic distance (Å)	Clash overlap (Å)
1:A:313:ALA:O	1:A:320:ARG:NH2	2.11	0.84
1:B:313:ALA:O	1:B:320:ARG:NH2	2.10	0.83
1:B:111:ILE:HG21	1:B:124:VAL:HG21	1.62	0.82
1:B:74:PHE:O	1:B:145:VAL:HA	1.82	0.79
1:A:498:ASN:HA	1:B:341:MET:HE3	1.69	0.73
1:B:489:CYS:SG	2:B:701:UMP:C6	2.86	0.68
1:A:249:GLU:OE2	1:A:251:ARG:NH2	2.27	0.68
4:B:703:CB3:H12	4:B:703:CB3:HG1	1.79	0.65
1:A:489:CYS:SG	2:A:701:UMP:C6	2.93	0.61
4:B:703:CB3:H12	4:B:703:CB3:HA	1.84	0.58
1:A:341:MET:HE3	1:B:498:ASN:HA	1.84	0.58
1:B:111:ILE:CG2	1:B:124:VAL:HG21	2.33	0.58
1:A:108:GLU:OE1	1:A:123:ARG:NH1	2.37	0.57
1:A:23:LEU:HD13	6:A:705:EDO:H11	1.88	0.55
1:B:581:ARG:HB3	1:B:581:ARG:NH2	2.22	0.55
1:A:109:GLU:N	1:A:109:GLU:OE1	2.40	0.54
1:B:334:ILE:HD11	1:B:550:THR:HG22	1.89	0.54
4:B:703:CB3:HA	4:B:703:CB3:C12	2.38	0.54
1:B:249:GLU:OE2	1:B:251:ARG:NH1	2.41	0.54
1:A:334:ILE:HD11	1:A:550:THR:HG22	1.90	0.52
1:A:358:ARG:HD3	1:A:542:GLU:OE1	2.10	0.52
1:A:11:MET:HG2	1:A:15:ARG:HA	1.92	0.51
1:B:581:ARG:HB3	1:B:581:ARG:HH21	1.76	0.51
1:B:358:ARG:HD3	1:B:542:GLU:OE1	2.10	0.51
1:A:341:MET:CE	1:B:498:ASN:HA	2.41	0.51
1:B:334:ILE:CD1	1:B:514:VAL:HG21	2.42	0.50

Continued on next page...

Continued from previous page...

Atom-1	Atom-2	Interatomic distance (Å)	Clash overlap (Å)
4:B:703:CB3:H12	4:B:703:CB3:CA	2.43	0.49
1:B:130:LEU:HB3	1:B:131:PRO:HD3	1.94	0.49
1:A:130:LEU:HB3	1:A:131:PRO:HD3	1.94	0.49
1:B:143:ASP:N	1:B:143:ASP:OD1	2.47	0.48
4:A:703:CB3:C6	4:A:703:CB3:H15	2.43	0.47
1:A:334:ILE:CD1	1:A:514:VAL:HG21	2.45	0.47
1:A:74:PHE:O	1:A:145:VAL:HA	2.15	0.46
1:B:384:TRP:CE3	1:B:395:LEU:HD11	2.50	0.46
1:A:498:ASN:HA	1:B:341:MET:CE	2.42	0.46
1:B:514:VAL:HB	1:B:552:VAL:HG12	1.98	0.46
1:A:384:TRP:CE3	1:A:395:LEU:HD11	2.50	0.45
1:A:416:ASN:C	1:A:418:PRO:HD3	2.37	0.45
1:B:416:ASN:C	1:B:418:PRO:HD3	2.37	0.44
1:A:384:TRP:CD1	1:A:389:ASP:HB3	2.53	0.44
1:A:98:LEU:HD13	1:A:122:GLN:HG2	1.99	0.43
1:A:514:VAL:HB	1:A:552:VAL:HG12	2.00	0.43
1:B:384:TRP:CD1	1:B:389:ASP:HB3	2.53	0.43
1:A:339:ARG:NH1	1:B:499:ASP:OD1	2.52	0.43
1:A:371:LYS:NZ	1:A:515:GLY:O	2.52	0.43
1:A:99:ASN:HD22	1:A:99:ASN:N	2.17	0.43
1:A:175:ALA:HB3	1:A:242:PRO:HG2	2.01	0.43
1:B:502:GLU:HB3	1:B:541:LYS:HB2	2.01	0.43
1:B:489:CYS:SG	2:B:701:UMP:C5	3.12	0.42
1:A:169:LEU:HD12	1:A:248:LEU:HD12	2.01	0.42
1:A:11:MET:CG	1:A:15:ARG:HA	2.49	0.42
1:B:99:ASN:HD22	1:B:99:ASN:N	2.17	0.42
1:A:30:THR:HB	1:A:243:TYR:OH	2.21	0.41
4:B:703:CB3:C6	4:B:703:CB3:H15	2.51	0.41
1:B:33:LYS:O	1:B:37:ARG:HG2	2.20	0.41
1:B:231:PHE:CE2	1:B:319:PHE:CD2	3.09	0.41
4:A:703:CB3:C6	4:A:703:CB3:C15	2.99	0.41
3:B:702:NDP:H8A	3:B:702:NDP:H52A	2.03	0.41
1:A:527:LEU:HD11	1:A:593:PHE:CE2	2.56	0.40
1:B:175:ALA:HB3	1:B:242:PRO:HG2	2.03	0.40
1:B:327:TYR:CE2	1:B:331:ILE:HD11	2.57	0.40
1:A:48:ARG:O	1:A:74:PHE:N	2.54	0.40
1:B:30:THR:HB	1:B:243:TYR:OH	2.22	0.40
1:A:294:LEU:HD21	1:B:319:PHE:CD1	2.56	0.40
1:B:48:ARG:O	1:B:74:PHE:N	2.55	0.40

There are no symmetry-related clashes.

5.3 Torsion angles

5.3.1 Protein backbone

In the following table, the Percentiles column shows the percent Ramachandran outliers of the chain as a percentile score with respect to all X-ray entries followed by that with respect to entries of similar resolution.

The Analysed column shows the number of residues for which the backbone conformation was analysed, and the total number of residues.

Mol	Chain	Analysed	Favoured	Allowed	Outliers	Percentiles	
1	A	498/566 (88%)	488 (98%)	10 (2%)	0	100	100
1	B	498/566 (88%)	486 (98%)	12 (2%)	0	100	100
All	All	996/1132 (88%)	974 (98%)	22 (2%)	0	100	100

There are no Ramachandran outliers to report.

5.3.2 Protein sidechains

In the following table, the Percentiles column shows the percent sidechain outliers of the chain as a percentile score with respect to all X-ray entries followed by that with respect to entries of similar resolution.

The Analysed column shows the number of residues for which the sidechain conformation was analysed, and the total number of residues.

Mol	Chain	Analysed	Rotameric	Outliers	Percentiles	
1	A	443/491 (90%)	430 (97%)	13 (3%)	42	76
1	B	443/491 (90%)	430 (97%)	13 (3%)	42	76
All	All	886/982 (90%)	860 (97%)	26 (3%)	42	76

All (26) residues with a non-rotameric sidechain are listed below:

Mol	Chain	Res	Type
1	A	19	ILE
1	A	74	PHE
1	A	99	ASN
1	A	107	LYS
1	A	119	GLU
1	A	226	THR
1	A	237	SER
1	A	409	ARG

Continued on next page...

Continued from previous page...

Mol	Chain	Res	Type
1	A	441	LYS
1	A	460	GLN
1	A	492	LEU
1	A	524	SER
1	A	556	HIS
1	B	19	ILE
1	B	29	THR
1	B	74	PHE
1	B	99	ASN
1	B	105	SER
1	B	143	ASP
1	B	191	ASP
1	B	226	THR
1	B	251	ARG
1	B	310	LEU
1	B	409	ARG
1	B	492	LEU
1	B	524	SER

Sometimes sidechains can be flipped to improve hydrogen bonding and reduce clashes. There are no such sidechains identified.

5.3.3 RNA [i](#)

There are no RNA molecules in this entry.

5.4 Non-standard residues in protein, DNA, RNA chains [i](#)

There are no non-standard protein/DNA/RNA residues in this entry.

5.5 Carbohydrates [i](#)

There are no monosaccharides in this entry.

5.6 Ligand geometry [i](#)

9 ligands are modelled in this entry.

In the following table, the Counts columns list the number of bonds (or angles) for which Mogul statistics could be retrieved, the number of bonds (or angles) that are observed in the model and

the number of bonds (or angles) that are defined in the Chemical Component Dictionary. The Link column lists molecule types, if any, to which the group is linked. The Z score for a bond length (or angle) is the number of standard deviations the observed value is removed from the expected value. A bond length (or angle) with $|Z| > 2$ is considered an outlier worth inspection. RMSZ is the root-mean-square of all Z scores of the bond lengths (or angles).

Mol	Type	Chain	Res	Link	Bond lengths			Bond angles		
					Counts	RMSZ	# Z > 2	Counts	RMSZ	# Z > 2
3	NDP	A	702	-	45,52,52	0.57	0	53,80,80	0.75	1 (1%)
5	K9A	A	704	-	30,30,30	1.65	8 (26%)	38,42,42	2.07	16 (42%)
3	NDP	B	702	-	45,52,52	0.61	0	53,80,80	0.67	1 (1%)
2	UMP	A	701	-	21,21,21	0.31	0	31,31,31	0.45	0
6	EDO	A	705	-	3,3,3	0.08	0	2,2,2	0.27	0
2	UMP	B	701	-	21,21,21	0.34	0	31,31,31	0.41	0
4	CB3	A	703	-	36,37,37	0.76	1 (2%)	46,51,51	1.88	5 (10%)
4	CB3	B	703	-	36,37,37	0.78	1 (2%)	46,51,51	1.93	5 (10%)
5	K9A	B	704	-	30,30,30	1.73	8 (26%)	38,42,42	2.24	18 (47%)

In the following table, the Chirals column lists the number of chiral outliers, the number of chiral centers analysed, the number of these observed in the model and the number defined in the Chemical Component Dictionary. Similar counts are reported in the Torsion and Rings columns. '-' means no outliers of that kind were identified.

Mol	Type	Chain	Res	Link	Chirals	Torsions	Rings
3	NDP	A	702	-	-	3/30/77/77	0/5/5/5
5	K9A	A	704	-	-	2/12/22/22	0/4/4/4
3	NDP	B	702	-	-	2/30/77/77	0/5/5/5
2	UMP	A	701	-	-	1/10/22/22	0/2/2/2
6	EDO	A	705	-	-	1/1/1/1	-
2	UMP	B	701	-	-	2/10/22/22	0/2/2/2
4	CB3	A	703	-	-	4/27/28/28	0/3/3/3
4	CB3	B	703	-	-	9/27/28/28	0/3/3/3
5	K9A	B	704	-	-	2/12/22/22	0/4/4/4

All (18) bond length outliers are listed below:

Mol	Chain	Res	Type	Atoms	Z	Observed(Å)	Ideal(Å)
5	B	704	K9A	C12-N3	4.06	1.53	1.46
5	B	704	K9A	C-C1	-3.43	1.39	1.49
5	A	704	K9A	C2-N	3.41	1.41	1.34
5	A	704	K9A	C-C1	-3.36	1.40	1.49
5	B	704	K9A	C2-N	3.35	1.41	1.34

Continued on next page...

Continued from previous page...

Mol	Chain	Res	Type	Atoms	Z	Observed(Å)	Ideal(Å)
5	B	704	K9A	C3-C5	-3.35	1.40	1.49
5	A	704	K9A	C12-N3	3.33	1.51	1.46
5	B	704	K9A	C4-N1	3.30	1.41	1.34
5	A	704	K9A	C3-C5	-3.19	1.41	1.49
5	A	704	K9A	C4-N1	3.13	1.41	1.34
5	A	704	K9A	C16-N4	2.91	1.40	1.34
5	A	704	K9A	C15-N3	-2.65	1.35	1.41
5	B	704	K9A	C16-N4	2.61	1.39	1.34
5	B	704	K9A	C15-N3	-2.57	1.35	1.41
5	B	704	K9A	C13-N3	2.36	1.50	1.46
4	B	703	CB3	C4-N3	2.27	1.37	1.33
5	A	704	K9A	C13-N3	2.11	1.50	1.46
4	A	703	CB3	C4-N3	2.10	1.36	1.33

All (46) bond angle outliers are listed below:

Mol	Chain	Res	Type	Atoms	Z	Observed(°)	Ideal(°)
4	B	703	CB3	C4A-C8A-N1	-9.55	118.42	123.60
4	A	703	CB3	C4A-C8A-N1	-9.27	118.56	123.60
4	A	703	CB3	C4A-C4-N3	-5.37	120.66	124.40
4	B	703	CB3	C4A-C4-N3	-5.35	120.67	124.40
5	B	704	K9A	N4-C17-N5	-4.48	120.25	125.70
5	B	704	K9A	C17-N5-C18	4.46	121.91	116.99
5	B	704	K9A	C12-N3-C15	4.42	126.74	116.27
5	B	704	K9A	C11-C12-N3	-4.07	102.79	110.70
5	A	704	K9A	C13-N3-C12	4.02	120.39	111.52
5	A	704	K9A	N4-C17-N5	-3.94	120.90	125.70
5	A	704	K9A	C17-N5-C18	3.69	121.07	116.99
5	B	704	K9A	C13-N3-C12	3.65	119.58	111.52
4	A	703	CB3	N1-C2-N3	-3.61	122.41	127.22
4	B	703	CB3	N1-C2-N3	-3.55	122.49	127.22
5	A	704	K9A	C11-C12-N3	-3.29	104.30	110.70
5	B	704	K9A	N1-C1-N	-3.06	120.35	125.51
5	A	704	K9A	N1-C1-N	-3.04	120.39	125.51
5	B	704	K9A	C11-N2-C9	3.04	126.31	118.09
5	A	704	K9A	C12-N3-C15	3.03	123.46	116.27
5	B	704	K9A	C2-N-C1	2.98	121.03	115.96
5	A	704	K9A	C4-N1-C1	2.96	121.00	115.96
5	A	704	K9A	C2-N-C1	2.94	120.97	115.96
5	B	704	K9A	C4-N1-C1	2.87	120.84	115.96
5	B	704	K9A	N6-C18-N5	2.86	121.07	117.03
5	A	704	K9A	N6-C18-N5	2.78	120.96	117.03

Continued on next page...

Continued from previous page...

Mol	Chain	Res	Type	Atoms	Z	Observed(°)	Ideal(°)
5	B	704	K9A	C-C1-N1	2.74	120.15	117.14
5	A	704	K9A	C12-C11-N2	-2.74	105.39	110.70
5	A	704	K9A	C3-C2-N	-2.68	119.91	124.32
5	B	704	K9A	C3-C2-N	-2.65	119.95	124.32
5	B	704	K9A	C3-C4-N1	-2.58	120.06	124.32
5	A	704	K9A	C3-C4-N1	-2.53	120.14	124.32
5	A	704	K9A	C-C1-N	2.47	119.85	117.14
5	A	704	K9A	C-C1-N1	2.39	119.76	117.14
4	A	703	CB3	C2-N3-C4	2.32	119.61	115.93
5	B	704	K9A	N7-C17-N5	2.29	120.82	117.25
3	B	702	NDP	C5A-C6A-N6A	2.24	123.76	120.35
5	B	704	K9A	C10-C9-N2	-2.23	118.93	121.33
4	B	703	CB3	C2-N3-C4	2.21	119.44	115.93
5	A	704	K9A	C11-N2-C9	2.20	124.04	118.09
5	B	704	K9A	C12-C11-N2	-2.16	106.50	110.70
5	B	704	K9A	C-C1-N	2.15	119.50	117.14
4	B	703	CB3	C2-N1-C8A	2.15	121.64	116.33
4	A	703	CB3	C2-N1-C8A	2.12	121.57	116.33
3	A	702	NDP	C5A-C6A-N6A	2.08	123.52	120.35
5	A	704	K9A	C16-N4-C17	2.03	120.19	116.44
5	B	704	K9A	C16-N4-C17	2.01	120.16	116.44

There are no chirality outliers.

All (26) torsion outliers are listed below:

Mol	Chain	Res	Type	Atoms
4	A	703	CB3	C11-C-N-CA
4	B	703	CB3	O-C-N-CA
4	B	703	CB3	C11-C-N-CA
4	A	703	CB3	O-C-N-CA
2	B	701	UMP	O4'-C4'-C5'-O5'
4	B	703	CB3	N-CA-CB-CG
4	B	703	CB3	CT-CA-CB-CG
2	B	701	UMP	C3'-C4'-C5'-O5'
5	A	704	K9A	C16-C15-N3-C13
5	B	704	K9A	C16-C15-N3-C13
3	A	702	NDP	O4D-C1D-N1N-C2N
6	A	705	EDO	O1-C1-C2-O2
3	A	702	NDP	C4D-C5D-O5D-PN
4	B	703	CB3	CB-CA-CT-O1
4	B	703	CB3	CB-CA-CT-O2
5	A	704	K9A	C18-C15-N3-C13

Continued on next page...

Continued from previous page...

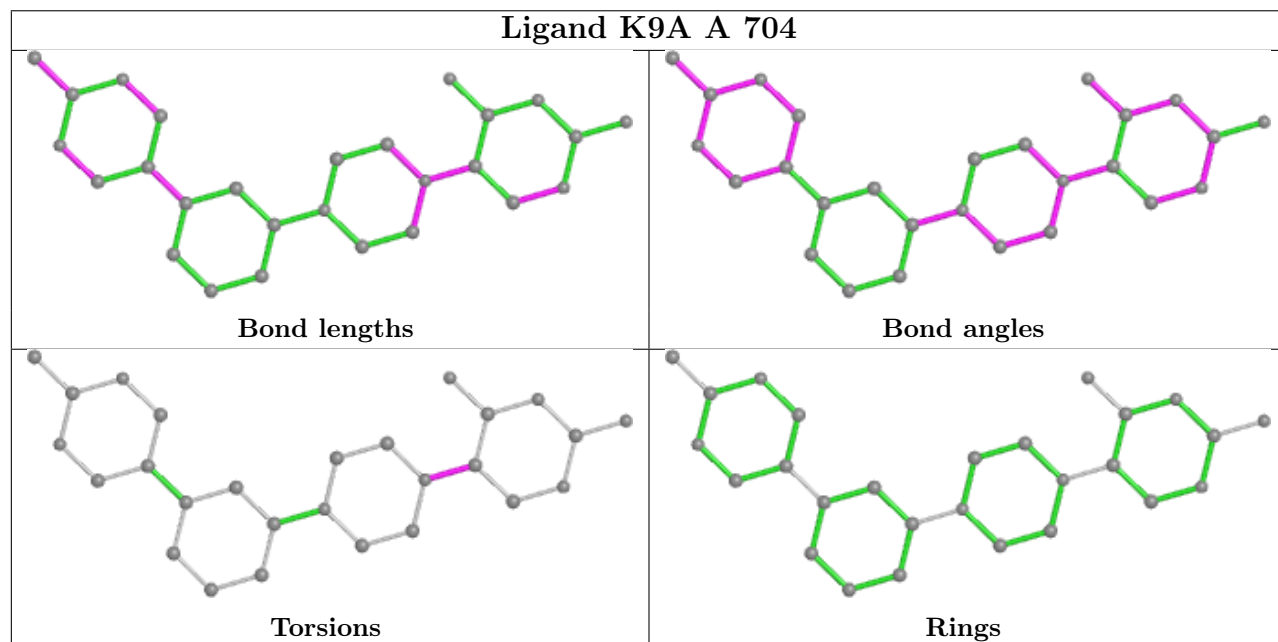
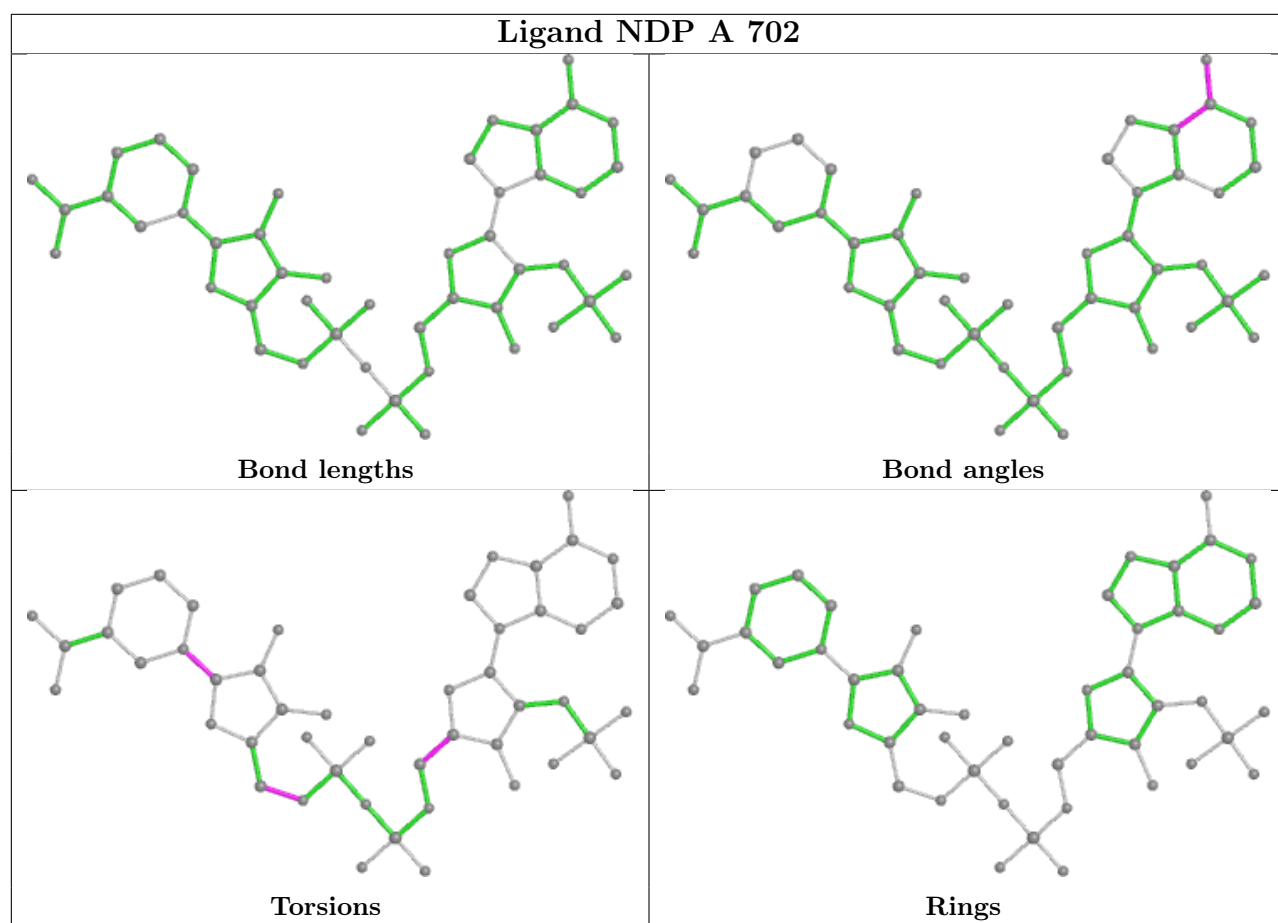
Mol	Chain	Res	Type	Atoms
3	B	702	NDP	O4D-C1D-N1N-C2N
4	A	703	CB3	OE1-CD-CG-CB
3	B	702	NDP	C2D-C1D-N1N-C2N
4	A	703	CB3	OE2-CD-CG-CB
4	B	703	CB3	OE2-CD-CG-CB
5	B	704	K9A	C18-C15-N3-C13
4	B	703	CB3	OE1-CD-CG-CB
2	A	701	UMP	O4'-C4'-C5'-O5'
3	A	702	NDP	C3B-C4B-C5B-O5B
4	B	703	CB3	C6-C9-N10-C14

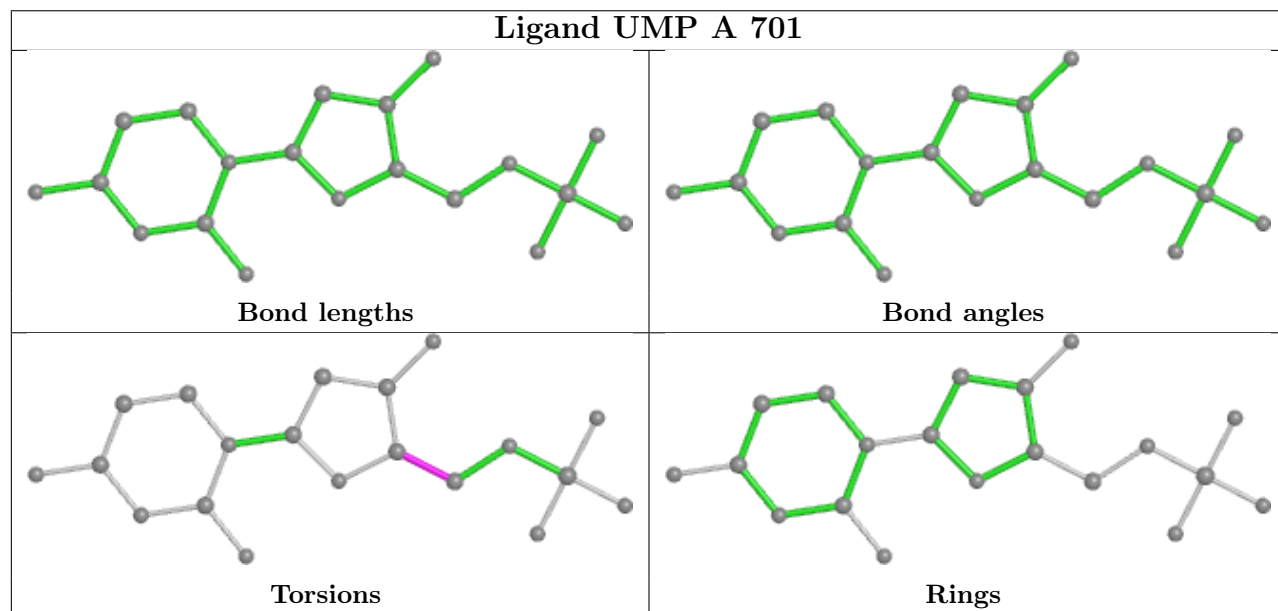
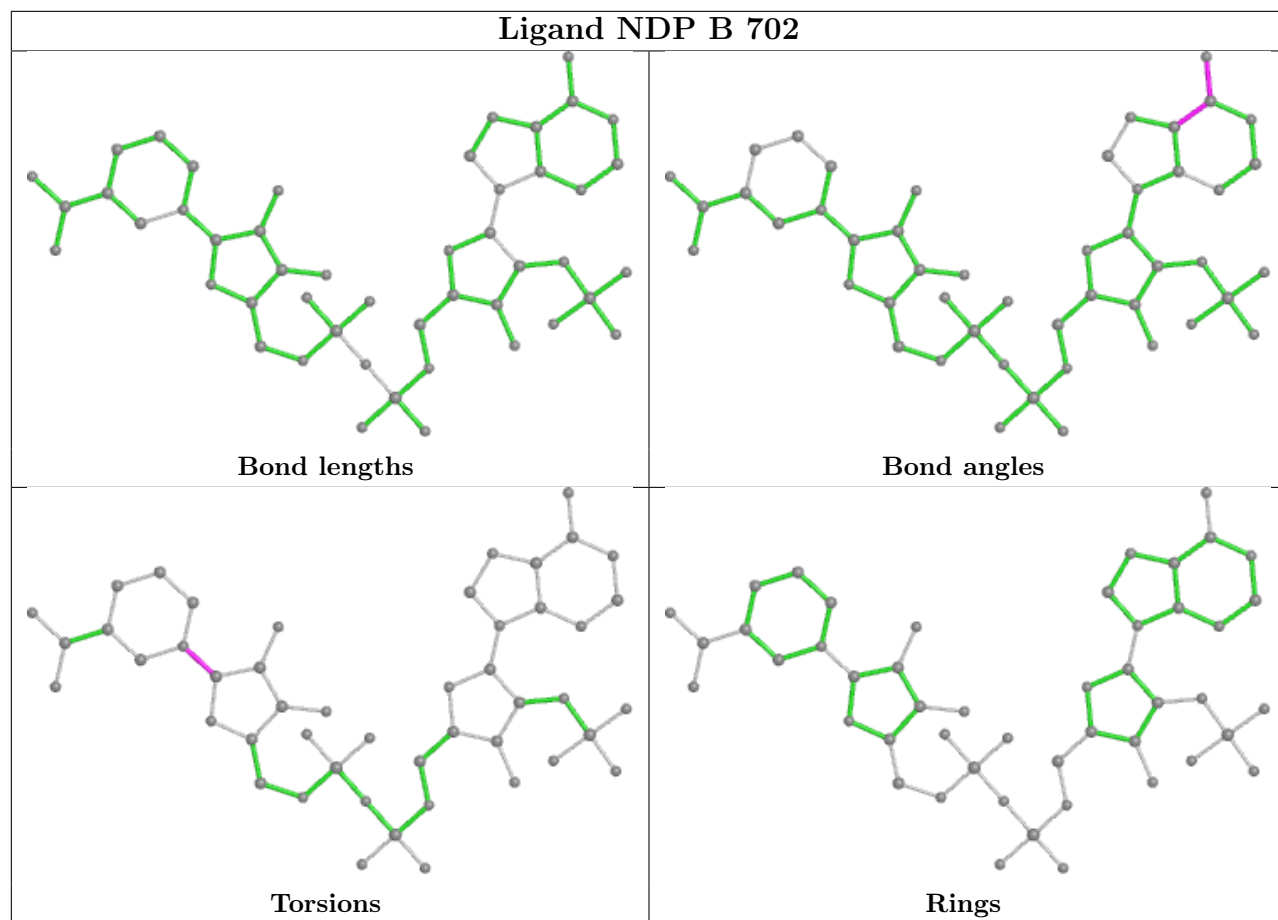
There are no ring outliers.

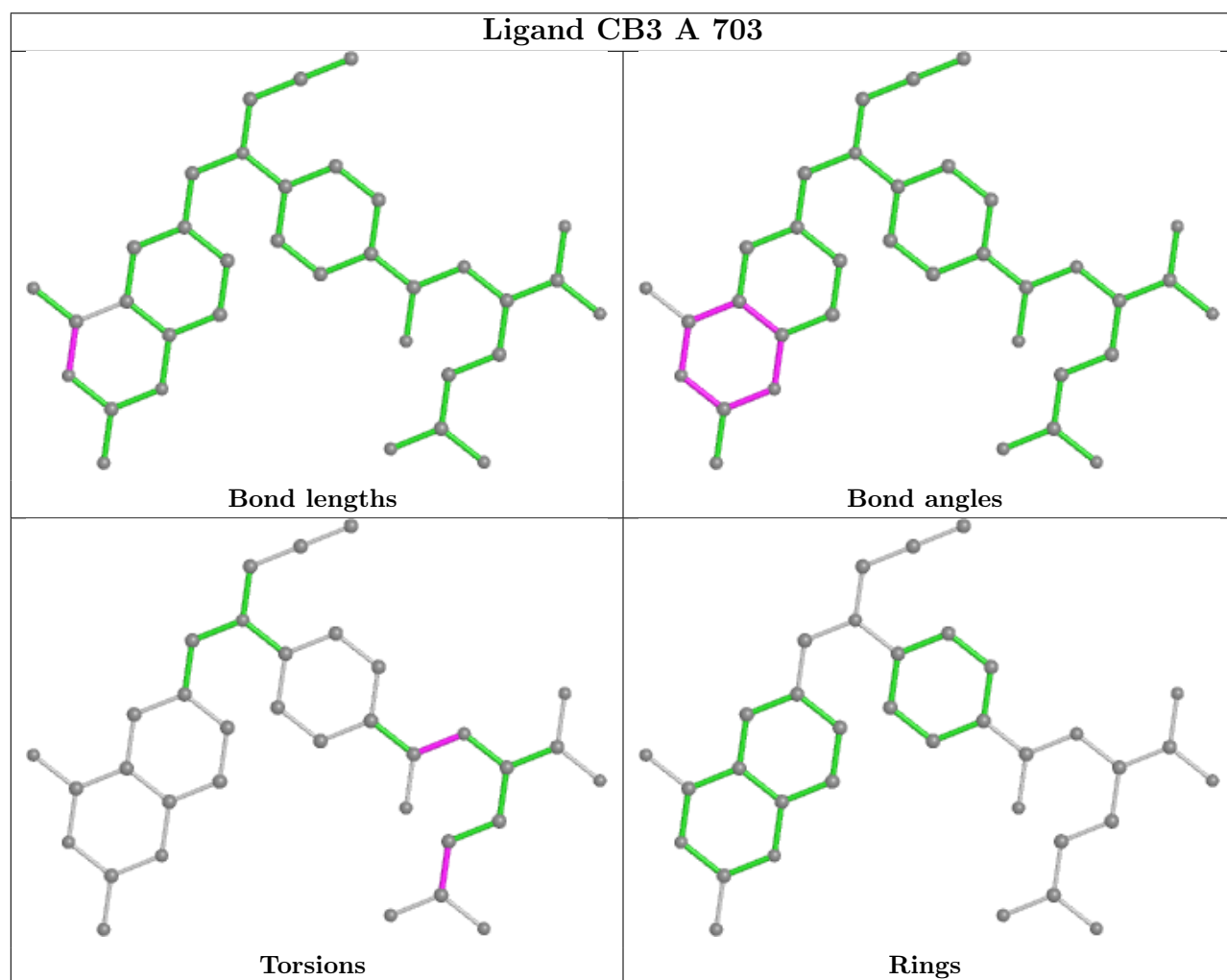
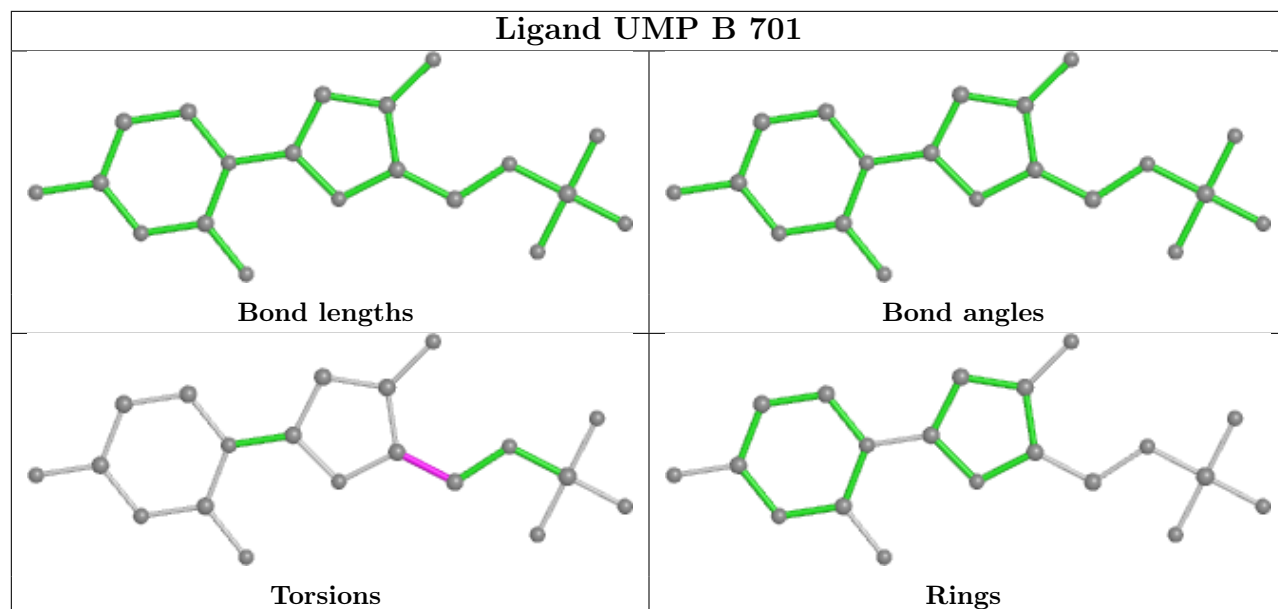
6 monomers are involved in 12 short contacts:

Mol	Chain	Res	Type	Clashes	Symm-Clashes
3	B	702	NDP	1	0
2	A	701	UMP	1	0
6	A	705	EDO	1	0
2	B	701	UMP	2	0
4	A	703	CB3	2	0
4	B	703	CB3	5	0

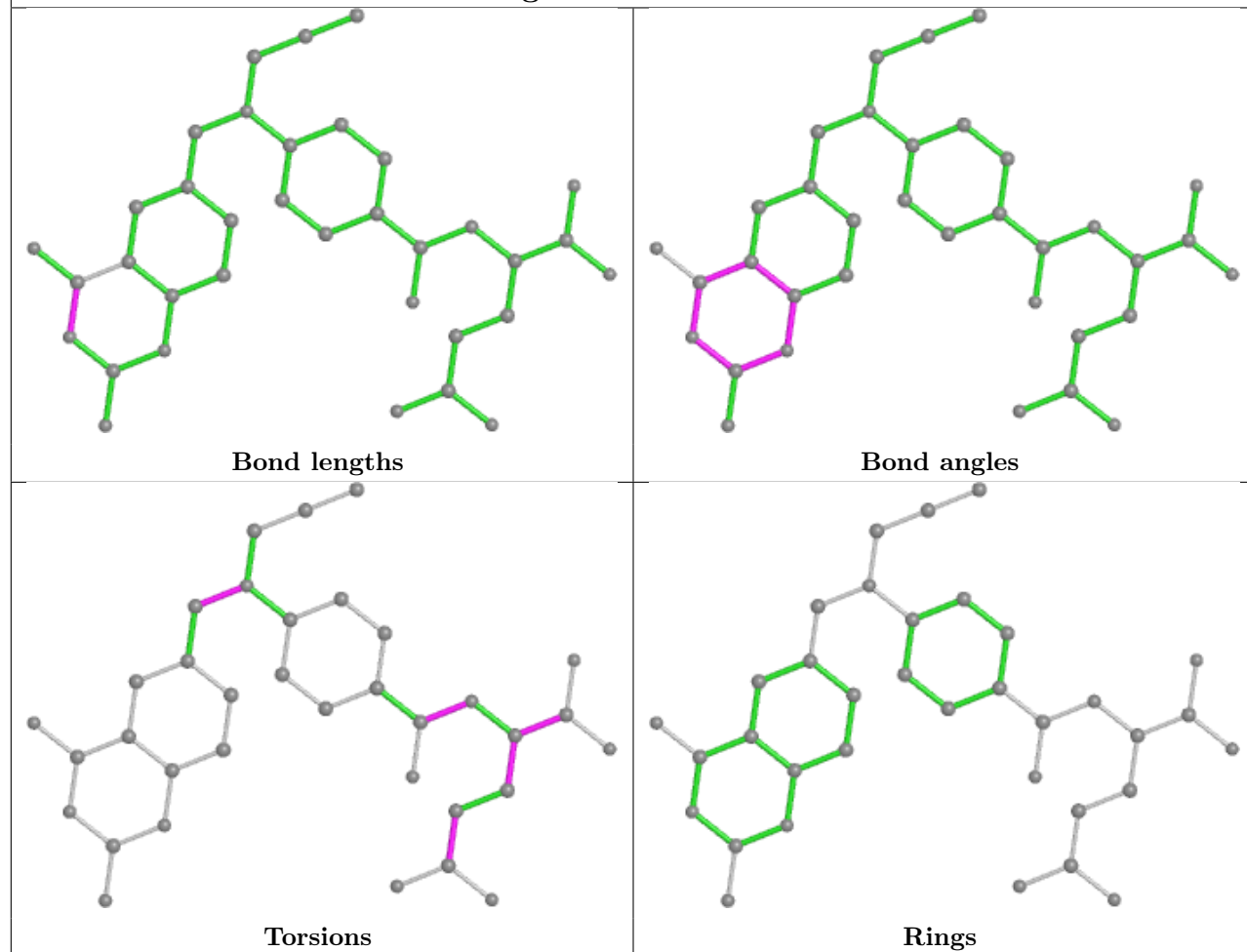
The following is a two-dimensional graphical depiction of Mogul quality analysis of bond lengths, bond angles, torsion angles, and ring geometry for all instances of the Ligand of Interest. In addition, ligands with molecular weight > 250 and outliers as shown on the validation Tables will also be included. For torsion angles, if less than 5% of the Mogul distribution of torsion angles is within 10 degrees of the torsion angle in question, then that torsion angle is considered an outlier. Any bond that is central to one or more torsion angles identified as an outlier by Mogul will be highlighted in the graph. For rings, the root-mean-square deviation (RMSD) between the ring in question and similar rings identified by Mogul is calculated over all ring torsion angles. If the average RMSD is greater than 60 degrees and the minimal RMSD between the ring in question and any Mogul-identified rings is also greater than 60 degrees, then that ring is considered an outlier. The outliers are highlighted in purple. The color gray indicates Mogul did not find sufficient equivalents in the CSD to analyse the geometry.



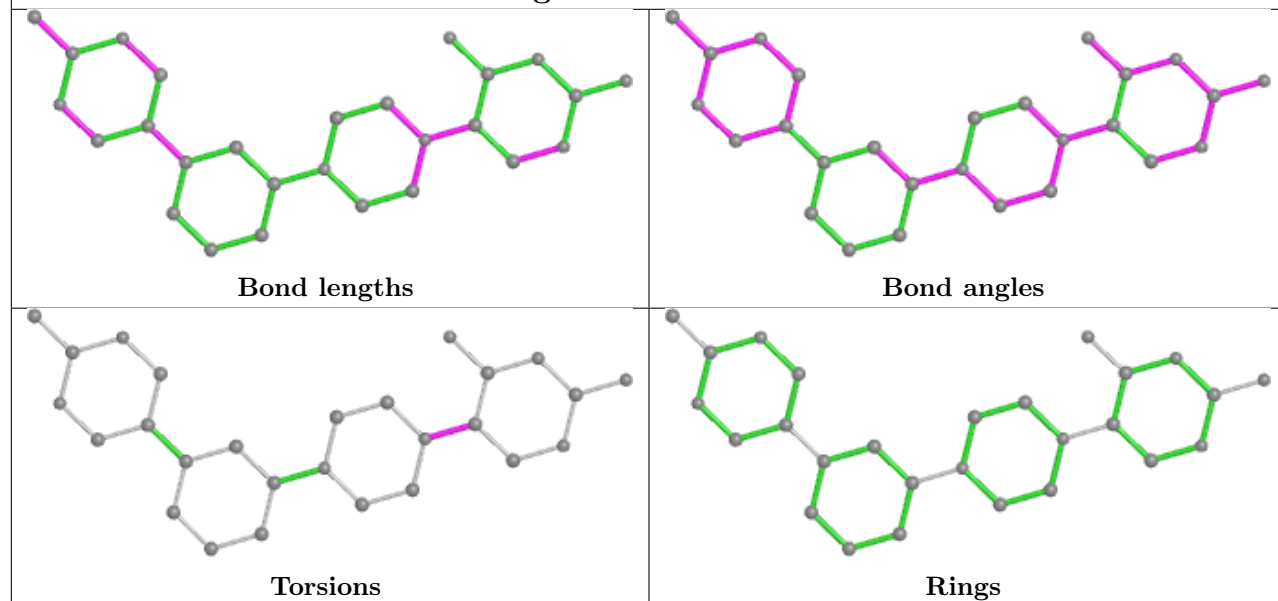




Ligand CB3 B 703



Ligand K9A B 704



5.7 Other polymers [i](#)

There are no such residues in this entry.

5.8 Polymer linkage issues [i](#)

The following chains have linkage breaks:

Mol	Chain	Number of breaks
1	A	1
1	B	1

All chain breaks are listed below:

Model	Chain	Residue-1	Atom-1	Residue-2	Atom-2	Distance (Å)
1	A	48:ARG	C	74:PHE	N	2.89
1	B	48:ARG	C	74:PHE	N	2.89

6 Fit of model and data [i](#)

6.1 Protein, DNA and RNA chains [i](#)

In the following table, the column labelled ‘#RSRZ > 2’ contains the number (and percentage) of RSRZ outliers, followed by percent RSRZ outliers for the chain as percentile scores relative to all X-ray entries and entries of similar resolution. The OWAB column contains the minimum, median, 95th percentile and maximum values of the occupancy-weighted average B-factor per residue. The column labelled ‘Q < 0.9’ lists the number of (and percentage) of residues with an average occupancy less than 0.9.

Mol	Chain	Analysed	<RSRZ>	#RSRZ > 2		OWAB(Å ²)	Q < 0.9
1	A	510/566 (90%)	-0.41	3 (0%)	89 72	26, 39, 76, 112	0
1	B	510/566 (90%)	-0.36	6 (1%)	79 54	27, 43, 108, 148	0
All	All	1020/1132 (90%)	-0.38	9 (0%)	84 63	26, 41, 90, 148	0

All (9) RSRZ outliers are listed below:

Mol	Chain	Res	Type	RSRZ
1	A	610	VAL	5.0
1	A	609	ALA	2.5
1	B	106	LEU	2.5
1	B	610	VAL	2.4
1	B	116	PRO	2.3
1	A	47	SER	2.2
1	B	103	SER	2.1
1	B	110	ASP	2.0
1	B	111	ILE	2.0

6.2 Non-standard residues in protein, DNA, RNA chains [i](#)

There are no non-standard protein/DNA/RNA residues in this entry.

6.3 Carbohydrates [i](#)

There are no monosaccharides in this entry.

6.4 Ligands [i](#)

In the following table, the Atoms column lists the number of modelled atoms in the group and the number defined in the chemical component dictionary. The B-factors column lists the minimum,

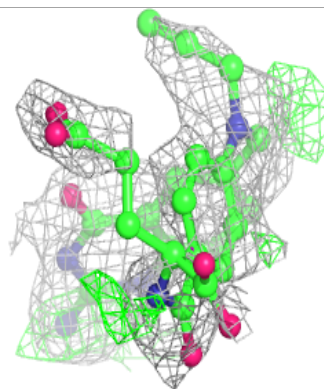
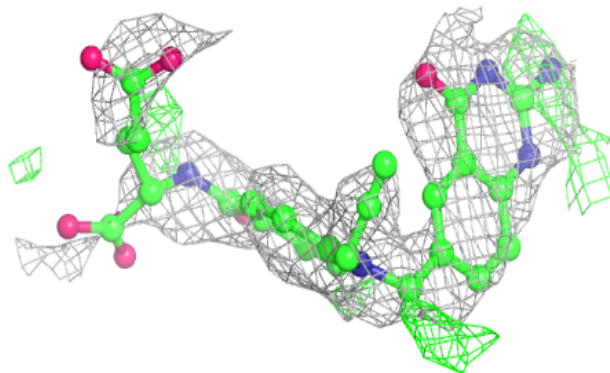
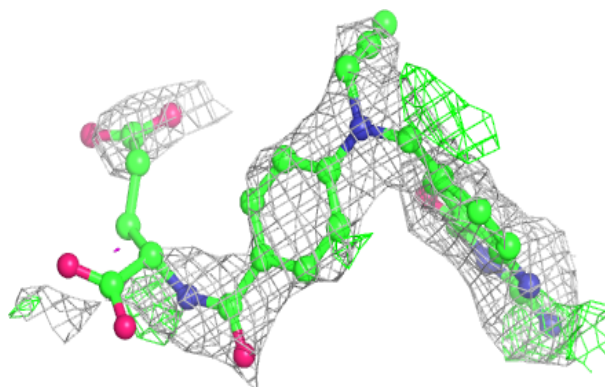
median, 95th percentile and maximum values of B factors of atoms in the group. The column labelled 'Q< 0.9' lists the number of atoms with occupancy less than 0.9.

Mol	Type	Chain	Res	Atoms	RSCC	RSR	B-factors(Å ²)	Q<0.9
6	EDO	A	705	4/4	0.80	0.37	47,48,49,52	0
4	CB3	B	703	35/35	0.86	0.31	15,16,21,21	35
4	CB3	A	703	35/35	0.88	0.30	21,22,28,28	35
5	K9A	B	704	27/27	0.90	0.23	50,63,73,74	0
3	NDP	B	702	48/48	0.92	0.18	44,67,98,102	0
5	K9A	A	704	27/27	0.92	0.21	38,44,60,61	0
2	UMP	A	701	20/20	0.96	0.16	41,43,45,46	0
2	UMP	B	701	20/20	0.97	0.11	42,45,46,46	0
3	NDP	A	702	48/48	0.97	0.12	30,35,43,44	0

The following is a graphical depiction of the model fit to experimental electron density of all instances of the Ligand of Interest. In addition, ligands with molecular weight > 250 and outliers as shown on the geometry validation Tables will also be included. Each fit is shown from different orientation to approximate a three-dimensional view.

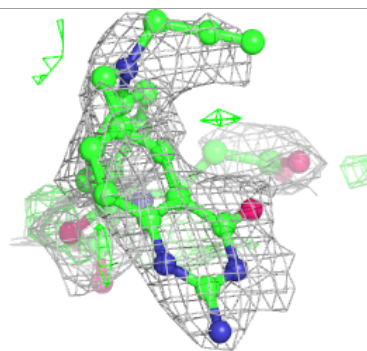
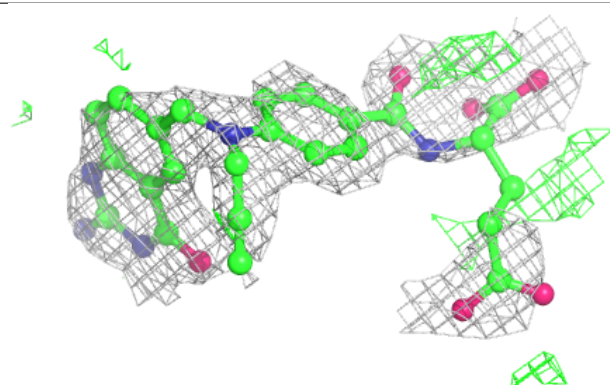
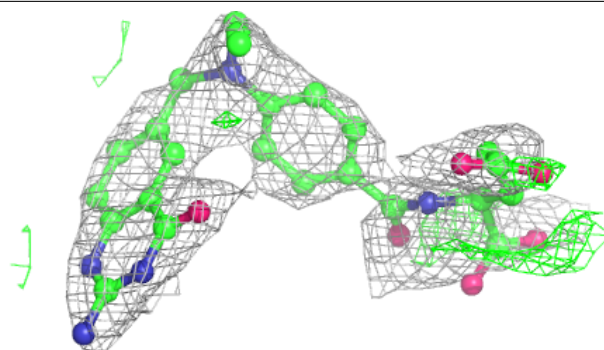
Electron density around CB3 B 703:

2mF_o-DF_c (at 0.7 rmsd) in gray
mF_o-DF_c (at 3 rmsd) in purple (negative)
and green (positive)

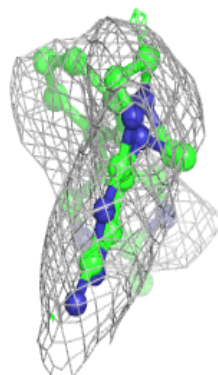
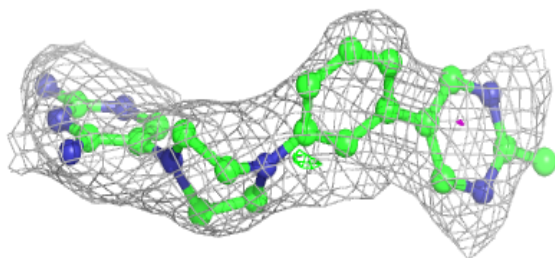
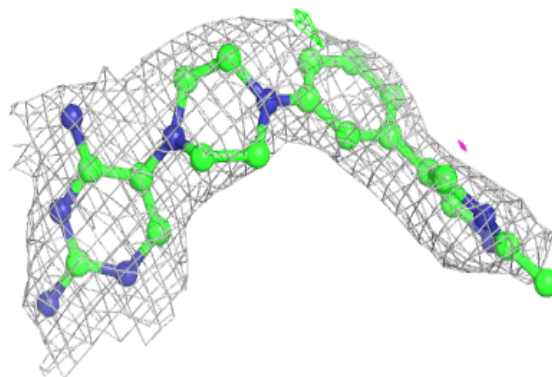


Electron density around CB3 A 703:

$2mF_o-DF_c$ (at 0.7 rmsd) in gray
 mF_o-DF_c (at 3 rmsd) in purple (negative)
and green (positive)

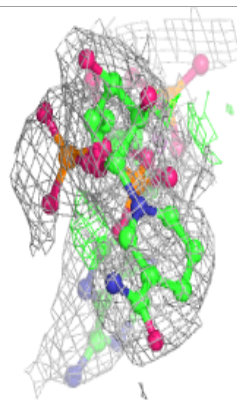
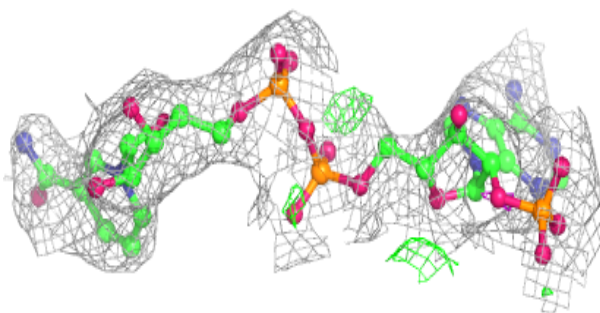
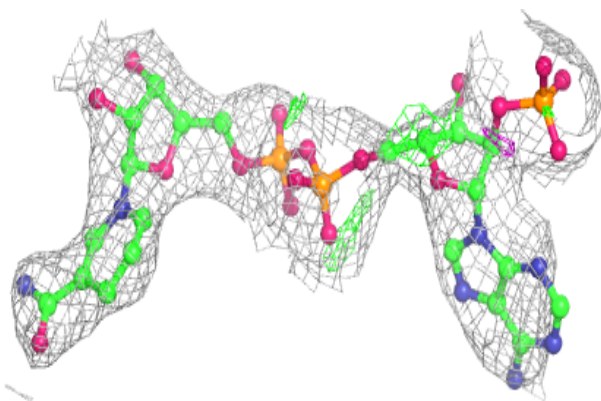
**Electron density around K9A B 704:**

$2mF_o-DF_c$ (at 0.7 rmsd) in gray
 mF_o-DF_c (at 3 rmsd) in purple (negative)
and green (positive)

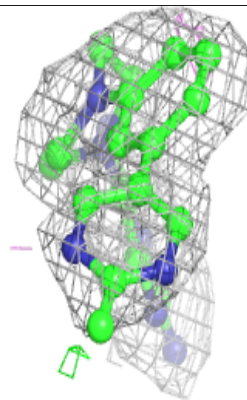
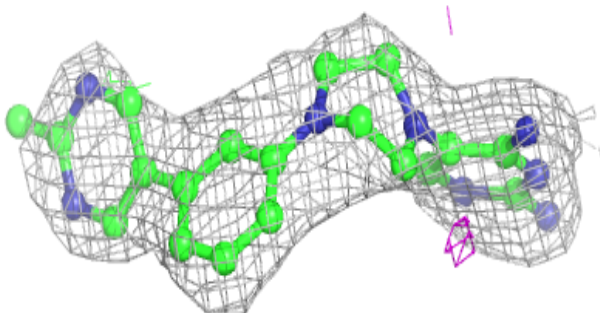
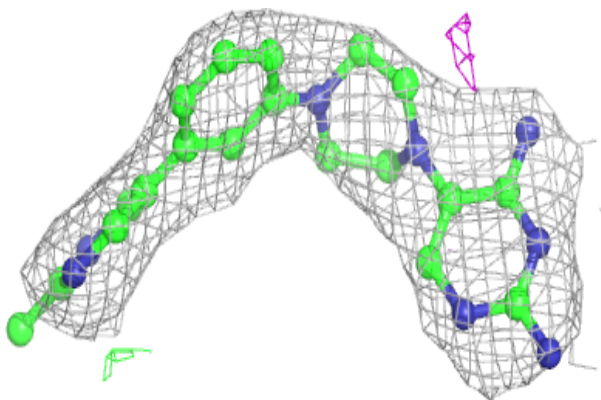


Electron density around NDP B 702:

$2mF_o-DF_c$ (at 0.7 rmsd) in gray
 mF_o-DF_c (at 3 rmsd) in purple (negative)
and green (positive)

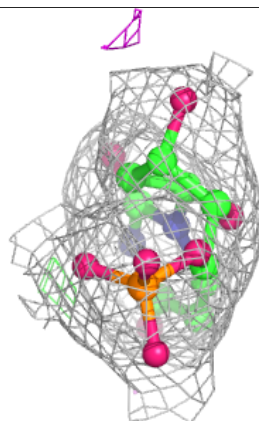
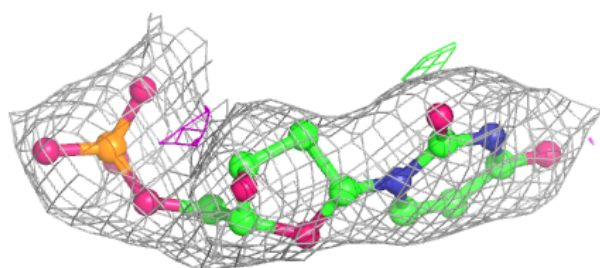
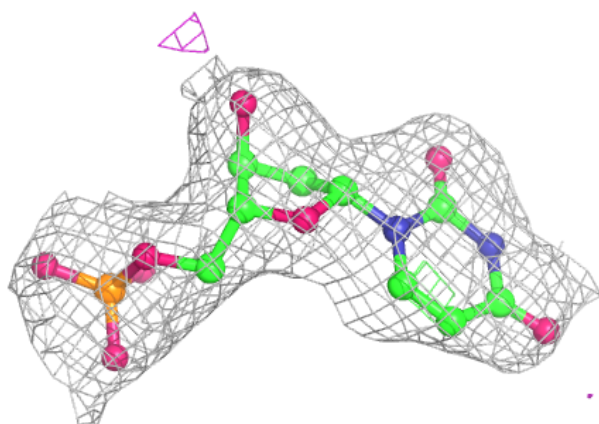
**Electron density around K9A A 704:**

$2mF_o-DF_c$ (at 0.7 rmsd) in gray
 mF_o-DF_c (at 3 rmsd) in purple (negative)
and green (positive)

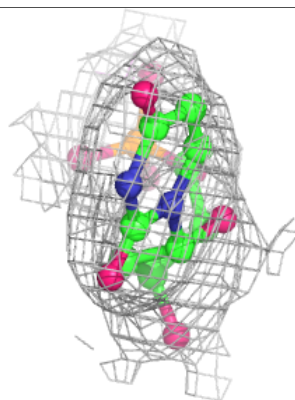
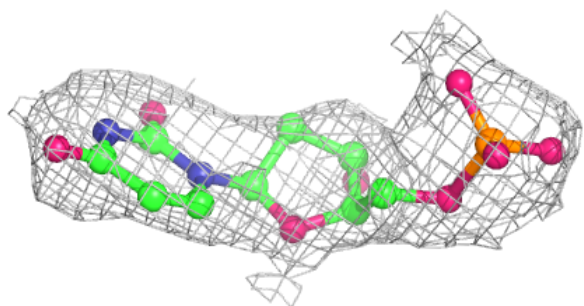
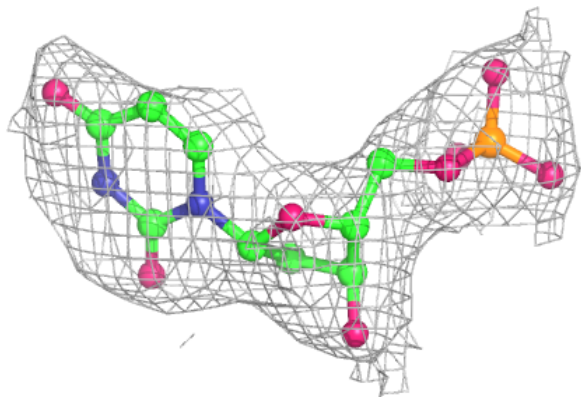


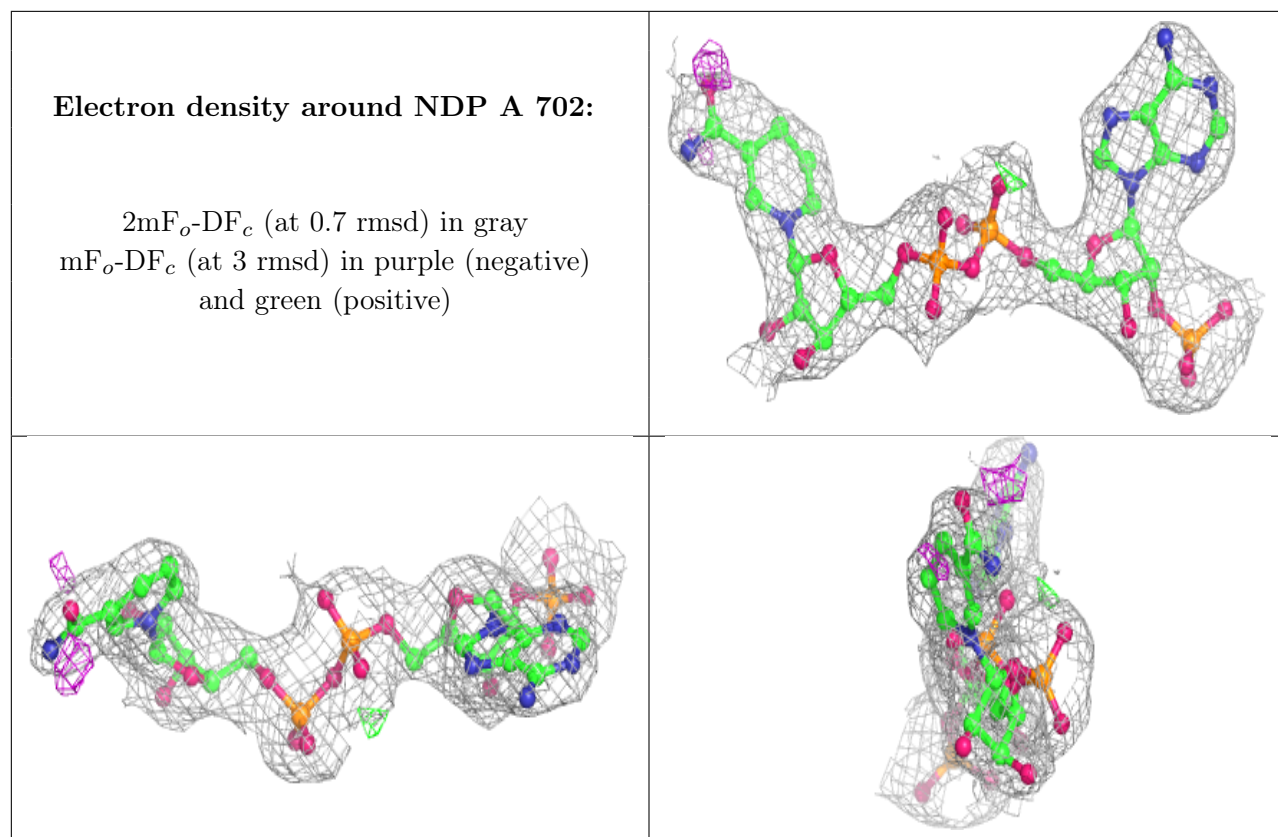
Electron density around UMP A 701:

$2mF_o-DF_c$ (at 0.7 rmsd) in gray
 mF_o-DF_c (at 3 rmsd) in purple (negative)
and green (positive)

**Electron density around UMP B 701:**

$2mF_o-DF_c$ (at 0.7 rmsd) in gray
 mF_o-DF_c (at 3 rmsd) in purple (negative)
and green (positive)





6.5 Other polymers [i](#)

There are no such residues in this entry.