



Full wwPDB X-ray Structure Validation Report ⓘ

Apr 1, 2025 – 11:20 pm BST

PDB ID : 5MZN / pdb_00005mzn
Title : Helicase Sen1
Authors : Leonaite, B.; Basquin, J.; Conti, E.
Deposited on : 2017-02-01
Resolution : 1.79 Å(reported)

This is a Full wwPDB X-ray Structure Validation Report for a publicly released PDB entry.

We welcome your comments at validation@mail.wwpdb.org

A user guide is available at

<https://www.wwpdb.org/validation/2017/XrayValidationReportHelp>

with specific help available everywhere you see the ⓘ symbol.

The types of validation reports are described at

<http://www.wwpdb.org/validation/2017/FAQs#types>.

The following versions of software and data (see [references ⓘ](#)) were used in the production of this report:

MolProbity : 4.02b-467
Mogul : 1.8.4, CSD as541be (2020)
Xtriage (Phenix) : 1.13
EDS : 3.0
buster-report : 1.1.7 (2018)
Percentile statistics : 20231227.v01 (using entries in the PDB archive December 27th 2023)
CCP4 : 9.0.003 (Gargrove)
Density-Fitness : 1.0.11
Ideal geometry (proteins) : Engh & Huber (2001)
Ideal geometry (DNA, RNA) : Parkinson et al. (1996)
Validation Pipeline (wwPDB-VP) : 2.42

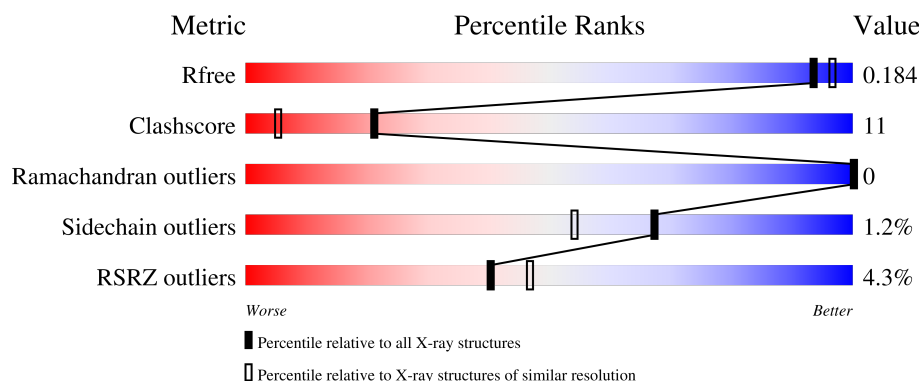
1 Overall quality at a glance

The following experimental techniques were used to determine the structure:

X-RAY DIFFRACTION

The reported resolution of this entry is 1.79 Å.

Percentile scores (ranging between 0-100) for global validation metrics of the entry are shown in the following graphic. The table shows the number of entries on which the scores are based.



Metric	Whole archive (#Entries)	Similar resolution (#Entries, resolution range(Å))
R_{free}	164625	1191 (1.78-1.78)
Clashscore	180529	1282 (1.78-1.78)
Ramachandran outliers	177936	1270 (1.78-1.78)
Sidechain outliers	177891	1270 (1.78-1.78)
RSRZ outliers	164620	1191 (1.78-1.78)

The table below summarises the geometric issues observed across the polymeric chains and their fit to the electron density. The red, orange, yellow and green segments of the lower bar indicate the fraction of residues that contain outliers for ≥ 3 , 2, 1 and 0 types of geometric quality criteria respectively. A grey segment represents the fraction of residues that are not modelled. The numeric value for each fraction is indicated below the corresponding segment, with a dot representing fractions $\leq 5\%$. The upper red bar (where present) indicates the fraction of residues that have poor fit to the electron density. The numeric value is given above the bar.

Mol	Chain	Length	Quality of chain
1	A	749	

The following table lists non-polymeric compounds, carbohydrate monomers and non-standard residues in protein, DNA, RNA chains that are outliers for geometric or electron-density-fit criteria:

Mol	Type	Chain	Res	Chirality	Geometry	Clashes	Electron density
3	EDO	A	2028	-	-	X	-

Continued on next page...

Continued from previous page...

Mol	Type	Chain	Res	Chirality	Geometry	Clashes	Electron density
4	GOL	A	2047	-	-	X	-
5	PEG	A	2054	-	-	X	-
5	PEG	A	2056	-	-	X	-
5	PEG	A	2057	-	-	X	-
5	PEG	A	2059	-	-	X	-

2 Entry composition [i](#)

There are 7 unique types of molecules in this entry. The entry contains 12935 atoms, of which 5965 are hydrogens and 0 are deuteriums.

In the tables below, the ZeroOcc column contains the number of atoms modelled with zero occupancy, the AltConf column contains the number of residues with at least one atom in alternate conformation and the Trace column contains the number of residues modelled with at most 2 atoms.

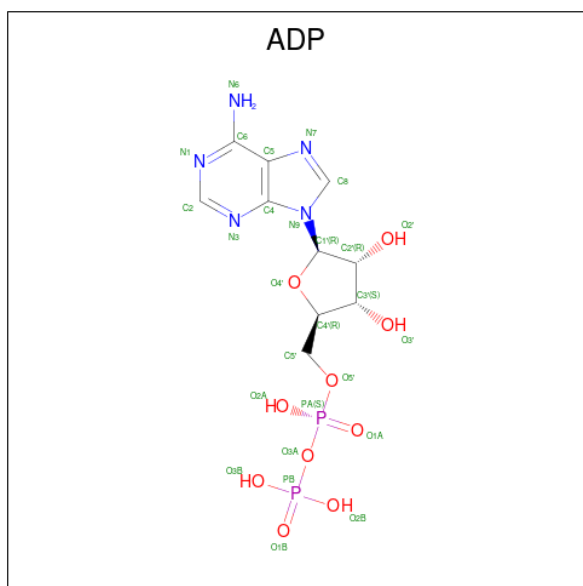
- Molecule 1 is a protein called Helicase SEN1,Helicase SEN1.

Mol	Chain	Residues	Atoms						ZeroOcc	AltConf	Trace
			Total	C	H	N	O	S			
1	A	682	11057	3513	5514	957	1041	32	0	20	0

There are 7 discrepancies between the modelled and reference sequences:

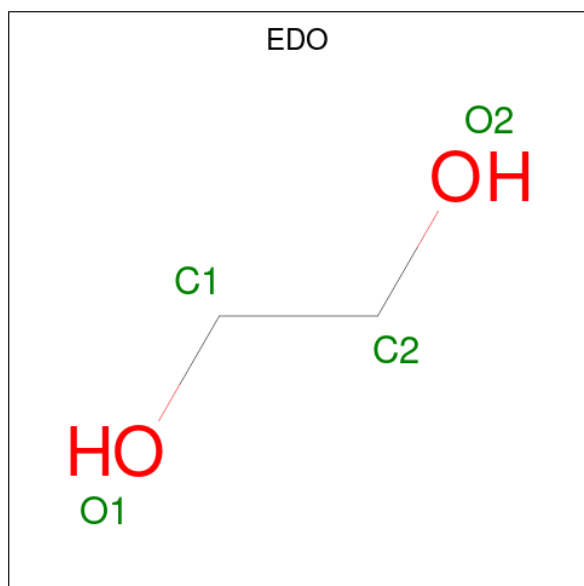
Chain	Residue	Modelled	Actual	Comment	Reference
A	1092	MET	-	initiating methionine	UNP Q00416
A	1093	ASN	-	expression tag	UNP Q00416
A	1094	SER	-	expression tag	UNP Q00416
A	1535	GLY	-	linker	UNP Q00416
A	1536	SER	-	linker	UNP Q00416
A	1537	GLY	-	linker	UNP Q00416
A	1538	SER	-	linker	UNP Q00416

- Molecule 2 is ADENOSINE-5'-DIPHOSPHATE (CCD ID: ADP) (formula: $C_{10}H_{15}N_5O_{10}P_2$).



Mol	Chain	Residues	Atoms					ZeroOcc	AltConf
2	A	1	Total	C	H	N	O	P	
			39	10	12	5	10	2	
								0	0

- Molecule 3 is 1,2-ETHANEDIOL (CCD ID: EDO) (formula: $C_2H_6O_2$).



Mol	Chain	Residues	Atoms				ZeroOcc	AltConf
3	A	1	Total	C	H	O		
			10	2	6	2	0	0
3	A	1	Total	C	H	O		
			10	2	6	2	0	0
3	A	1	Total	C	H	O		
			10	2	6	2	0	0
3	A	1	Total	C	H	O		
			10	2	6	2	0	0
3	A	1	Total	C	H	O		
			10	2	6	2	0	0
3	A	1	Total	C	H	O		
			10	2	6	2	0	0
3	A	1	Total	C	H	O		
			10	2	6	2	0	0
3	A	1	Total	C	H	O		
			10	2	6	2	0	0

Continued on next page...

Continued from previous page...

Mol	Chain	Residues	Atoms				ZeroOcc	AltConf
3	A	1	Total	C	H	O	0	0
			10	2	6	2		
3	A	1	Total	C	H	O	0	0
			10	2	6	2		
3	A	1	Total	C	H	O	0	0
			10	2	6	2		
3	A	1	Total	C	H	O	0	0
			10	2	6	2		
3	A	1	Total	C	H	O	0	0
			10	2	6	2		
3	A	1	Total	C	H	O	0	0
			10	2	6	2		
3	A	1	Total	C	H	O	0	0
			8	2	4	2		
3	A	1	Total	C	H	O	0	0
			10	2	6	2		
3	A	1	Total	C	H	O	0	0
			10	2	6	2		
3	A	1	Total	C	H	O	0	0
			10	2	6	2		
3	A	1	Total	C	H	O	0	0
			10	2	6	2		
3	A	1	Total	C	H	O	0	0
			10	2	6	2		
3	A	1	Total	C	H	O	0	0
			10	2	6	2		
3	A	1	Total	C	H	O	0	0
			10	2	6	2		
3	A	1	Total	C	H	O	0	0
			10	2	6	2		
3	A	1	Total	C	H	O	0	0
			10	2	6	2		
3	A	1	Total	C	H	O	0	0
			10	2	6	2		
3	A	1	Total	C	H	O	0	0
			10	2	6	2		

Continued on next page...

Continued from previous page...

Mol	Chain	Residues	Atoms				ZeroOcc	AltConf
3	A	1	Total	C	H	O	0	0
			10	2	6	2		
3	A	1	Total	C	H	O	0	0
			10	2	6	2		
3	A	1	Total	C	H	O	0	0
			10	2	6	2		
3	A	1	Total	C	H	O	0	0
			10	2	6	2		
3	A	1	Total	C	H	O	0	0
			10	2	6	2		
3	A	1	Total	C	H	O	0	0
			10	2	6	2		
3	A	1	Total	C	H	O	0	0
			10	2	6	2		

- Molecule 4 is GLYCEROL (CCD ID: GOL) (formula: $C_3H_8O_3$).



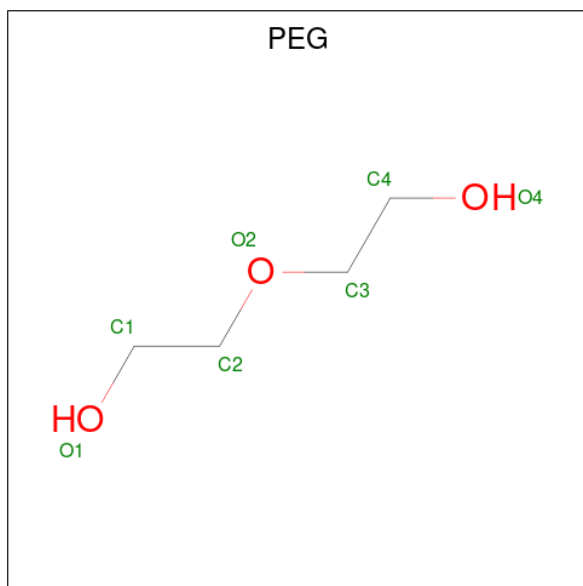
Mol	Chain	Residues	Atoms				ZeroOcc	AltConf
4	A	1	Total	C	H	O	0	0
			14	3	8	3		
4	A	1	Total	C	H	O	0	0
			14	3	8	3		
4	A	1	Total	C	H	O	0	0
			12	3	6	3		

Continued on next page...

Continued from previous page...

Mol	Chain	Residues	Atoms				ZeroOcc	AltConf
4	A	1	Total	C	H	O	0	0
			14	3	8	3		
4	A	1	Total	C	H	O	0	0
			13	3	7	3		
4	A	1	Total	C	H	O	0	0
			13	3	7	3		
4	A	1	Total	C	H	O	0	0
			14	3	8	3		
4	A	1	Total	C	H	O	0	0
			14	3	8	3		
4	A	1	Total	C	H	O	0	0
			14	3	8	3		
4	A	1	Total	C	H	O	0	0
			14	3	8	3		
4	A	1	Total	C	H	O	0	0
			13	3	7	3		

- Molecule 5 is DI(HYDROXYETHYL)ETHER (CCD ID: PEG) (formula: $C_4H_{10}O_3$).



Mol	Chain	Residues	Atoms				ZeroOcc	AltConf
5	A	1	Total	C	H	O	0	0
			17	4	10	3		
5	A	1	Total	C	H	O	0	0
			17	4	10	3		

Continued on next page...

Continued from previous page...

Mol	Chain	Residues	Atoms				ZeroOcc	AltConf
5	A	1	Total	C	H	O	0	0
			17	4	10	3		
5	A	1	Total	C	H	O	0	0
			17	4	10	3		
5	A	1	Total	C	H	O	0	0
			17	4	10	3		
5	A	1	Total	C	H	O	0	0
			17	4	10	3		
5	A	1	Total	C	H	O	0	0
			17	4	10	3		
5	A	1	Total	C	H	O	0	0
			17	4	10	3		
5	A	1	Total	C	H	O	0	0
			17	4	10	3		
5	A	1	Total	C	H	O	0	0
			17	4	10	3		

- Molecule 6 is MAGNESIUM ION (CCD ID: MG) (formula: Mg).

Mol	Chain	Residues	Atoms		ZeroOcc	AltConf
6	A	1	Total	Mg	0	0
			1	1		

- Molecule 7 is water.

Mol	Chain	Residues	Atoms		ZeroOcc	AltConf
7	A	1090	Total	O	0	0
			1090	1090		

- Molecule 1: Helicase SEN1, Helicase SEN1



4 Data and refinement statistics

Property	Value	Source
Space group	P 21 21 2	Depositor
Cell constants a, b, c, α , β , γ	90.28Å 171.94Å 69.09Å 90.00° 90.00° 90.00°	Depositor
Resolution (Å)	48.39 – 1.79 48.39 – 1.79	Depositor EDS
% Data completeness (in resolution range)	98.3 (48.39-1.79) 98.2 (48.39-1.79)	Depositor EDS
R_{merge}	0.09	Depositor
R_{sym}	(Not available)	Depositor
$\langle I/\sigma(I) \rangle$ ¹	1.01 (at 1.78Å)	Xtriage
Refinement program	PHENIX	Depositor
R, R_{free}	0.153 , 0.184 0.154 , 0.184	Depositor DCC
R_{free} test set	5177 reflections (5.04%)	wwPDB-VP
Wilson B-factor (Å ²)	29.8	Xtriage
Anisotropy	0.272	Xtriage
Bulk solvent k_{sol} (e/Å ³), B_{sol} (Å ²)	0.37 , 64.9	EDS
L-test for twinning ²	$\langle L \rangle = 0.49$, $\langle L^2 \rangle = 0.33$	Xtriage
Estimated twinning fraction	No twinning to report.	Xtriage
F_o, F_c correlation	0.97	EDS
Total number of atoms	12935	wwPDB-VP
Average B, all atoms (Å ²)	53.0	wwPDB-VP

Xtriage's analysis on translational NCS is as follows: *The largest off-origin peak in the Patterson function is 3.56% of the height of the origin peak. No significant pseudotranslation is detected.*

¹Intensities estimated from amplitudes.

²Theoretical values of $\langle |L| \rangle$, $\langle L^2 \rangle$ for acentric reflections are 0.5, 0.333 respectively for untwinned datasets, and 0.375, 0.2 for perfectly twinned datasets.

5 Model quality [i](#)

5.1 Standard geometry [i](#)

Bond lengths and bond angles in the following residue types are not validated in this section: GOL, PEG, ADP, EDO, MG

The Z score for a bond length (or angle) is the number of standard deviations the observed value is removed from the expected value. A bond length (or angle) with $|Z| > 5$ is considered an outlier worth inspection. RMSZ is the root-mean-square of all Z scores of the bond lengths (or angles).

Mol	Chain	Bond lengths		Bond angles	
		RMSZ	$\# Z > 5$	RMSZ	$\# Z > 5$
1	A	0.52	1/5654 (0.0%)	0.66	2/7628 (0.0%)

All (1) bond length outliers are listed below:

Mol	Chain	Res	Type	Atoms	Z	Observed(Å)	Ideal(Å)
1	A	1597	GLU	CB-CG	-5.12	1.42	1.52

All (2) bond angle outliers are listed below:

Mol	Chain	Res	Type	Atoms	Z	Observed(°)	Ideal(°)
1	A	1814[A]	MET	CG-SD-CE	6.92	111.27	100.20
1	A	1814[B]	MET	CG-SD-CE	6.92	111.27	100.20

There are no chirality outliers.

There are no planarity outliers.

5.2 Too-close contacts [i](#)

In the following table, the Non-H and H(model) columns list the number of non-hydrogen atoms and hydrogen atoms in the chain respectively. The H(added) column lists the number of hydrogen atoms added and optimized by MolProbity. The Clashes column lists the number of clashes within the asymmetric unit, whereas Symm-Clashes lists symmetry-related clashes.

Mol	Chain	Non-H	H(model)	H(added)	Clashes	Symm-Clashes
1	A	5543	5514	5501	109	1
2	A	27	12	12	0	0
3	A	160	238	238	22	1
4	A	72	91	91	15	0
5	A	77	110	110	33	0

Continued on next page...

Continued from previous page...

Mol	Chain	Non-H	H(model)	H(added)	Clashes	Symm-Clashes
6	A	1	0	0	0	0
7	A	1090	0	0	54	22
All	All	6970	5965	5952	128	23

The all-atom clashscore is defined as the number of clashes found per 1000 atoms (including hydrogen atoms). The all-atom clashscore for this structure is 11.

All (128) close contacts within the same asymmetric unit are listed below, sorted by their clash magnitude.

Atom-1	Atom-2	Interatomic distance (Å)	Clash overlap (Å)
1:A:1683[A]:LEU:HB2	4:A:2047:GOL:O3	1.60	1.01
1:A:1257:ASN:OD1	7:A:2101:HOH:O	1.81	0.98
1:A:1857:CYS:SG	7:A:2735:HOH:O	2.26	0.94
1:A:1209:CYS:O	7:A:2102:HOH:O	1.89	0.91
1:A:1683[A]:LEU:CB	4:A:2047:GOL:O3	2.19	0.89
4:A:2050:GOL:O2	7:A:2104:HOH:O	1.92	0.87
1:A:1692:GLU:OE2	7:A:2103:HOH:O	1.91	0.87
1:A:1192:SER:O	1:A:1266[B]:ARG:NH2	2.08	0.85
1:A:1402:LYS:NZ	7:A:2116:HOH:O	2.12	0.82
1:A:1299:GLU:O	3:A:2038:EDO:O1	1.97	0.80
1:A:1365[A]:LYS:NZ	3:A:2008:EDO:O2	2.15	0.80
1:A:1266[A]:ARG:NH1	7:A:2118:HOH:O	2.14	0.80
4:A:2049:GOL:O3	7:A:2105:HOH:O	1.99	0.79
1:A:1841[B]:ARG:NH2	7:A:2120:HOH:O	2.16	0.78
4:A:2048:GOL:O2	7:A:2106:HOH:O	2.00	0.77
1:A:1193:ASP:OD2	3:A:2039:EDO:O1	2.03	0.77
1:A:1425:SER:O	7:A:2107:HOH:O	2.03	0.76
1:A:1319:VAL:O	7:A:2108:HOH:O	2.04	0.76
4:A:2052:GOL:O2	7:A:2109:HOH:O	2.05	0.74
4:A:2053:GOL:O1	7:A:2110:HOH:O	2.06	0.74
1:A:1175:ARG:NH1	7:A:2124:HOH:O	2.20	0.72
1:A:1253:THR:O	7:A:2111:HOH:O	2.08	0.72
1:A:1259:ASP:OD1	7:A:2113:HOH:O	2.09	0.71
3:A:2035:EDO:O1	7:A:2112:HOH:O	2.08	0.71
1:A:1583:LYS:NZ	7:A:2130:HOH:O	2.24	0.69
3:A:2014:EDO:O2	7:A:2114:HOH:O	2.09	0.69
1:A:1683[A]:LEU:N	4:A:2047:GOL:O3	2.29	0.65
1:A:1266[B]:ARG:NH2	7:A:2135:HOH:O	2.29	0.65
1:A:1623:THR:O	7:A:2119:HOH:O	2.15	0.63
1:A:1555:GLN:OE1	3:A:2023:EDO:O1	2.13	0.62
1:A:1122[A]:GLN:NE2	7:A:2143:HOH:O	2.32	0.61

Continued on next page...

Continued from previous page...

Atom-1	Atom-2	Interatomic distance (Å)	Clash overlap (Å)
1:A:1194:PHE:O	1:A:1266[B]:ARG:NH1	2.34	0.61
1:A:1830:HIS:HB2	3:A:2029:EDO:C2	2.31	0.60
1:A:1679:GLY:O	4:A:2047:GOL:O3	2.15	0.60
3:A:2002:EDO:O2	5:A:2064:PEG:O4	2.02	0.60
5:A:2057:PEG:H32	7:A:2432:HOH:O	2.03	0.59
1:A:1449:ASN:OD1	1:A:1451:ALA:N	2.35	0.59
3:A:2018:EDO:H11	5:A:2054:PEG:H21	1.84	0.58
1:A:1128:ASN:HB2	5:A:2059:PEG:C4	2.34	0.58
1:A:1772:ASN:ND2	7:A:2140:HOH:O	2.31	0.57
1:A:1226:ARG:NH1	7:A:2146:HOH:O	2.34	0.56
1:A:1449:ASN:HB3	5:A:2054:PEG:O2	2.05	0.56
1:A:1422:ARG:HH21	3:A:2014:EDO:H21	1.71	0.55
5:A:2056:PEG:O1	7:A:2115:HOH:O	2.09	0.55
1:A:1444:ARG:NE	7:A:2160:HOH:O	2.38	0.55
1:A:1758:LYS:NZ	7:A:2163:HOH:O	2.39	0.55
1:A:1841[B]:ARG:NH2	7:A:2164:HOH:O	2.39	0.55
1:A:1128:ASN:HA	5:A:2059:PEG:H31	1.88	0.55
1:A:1449:ASN:HB2	5:A:2054:PEG:H12	1.90	0.54
1:A:1719:MET:HG2	1:A:1758:LYS:HE2	1.89	0.54
5:A:2061:PEG:O1	5:A:2062:PEG:O4	2.09	0.54
1:A:1200:SER:O	7:A:2123:HOH:O	2.18	0.54
1:A:1237:LYS:HE3	5:A:2059:PEG:H32	1.89	0.53
1:A:1820:ARG:HH12	5:A:2057:PEG:H41	1.74	0.53
1:A:1669:PHE:CZ	1:A:1814[A]:MET:HE3	2.44	0.53
1:A:1365[B]:LYS:NZ	3:A:2008:EDO:O1	2.34	0.53
1:A:1669:PHE:CZ	1:A:1814[A]:MET:CE	2.93	0.52
1:A:1683[A]:LEU:CA	4:A:2047:GOL:O3	2.58	0.52
1:A:1237:LYS:CE	5:A:2059:PEG:H41	2.40	0.52
1:A:1422:ARG:HH21	3:A:2014:EDO:C2	2.23	0.52
1:A:1633:LYS:NZ	7:A:2175:HOH:O	2.42	0.51
1:A:1669:PHE:HZ	1:A:1814[A]:MET:CE	2.24	0.51
1:A:1703:ILE:O	7:A:2122:HOH:O	2.17	0.51
1:A:1841[B]:ARG:NE	7:A:2177:HOH:O	2.43	0.51
1:A:1223:PRO:O	3:A:2036:EDO:O2	2.17	0.50
1:A:1353:SER:HA	3:A:2037:EDO:H11	1.94	0.50
1:A:1237:LYS:HE3	5:A:2059:PEG:C3	2.42	0.49
5:A:2063:PEG:C3	7:A:2286:HOH:O	2.60	0.49
1:A:1192:SER:O	1:A:1266[B]:ARG:CZ	2.60	0.49
1:A:1354:LEU:H	3:A:2037:EDO:C1	2.25	0.49
1:A:1841[B]:ARG:NH1	7:A:2184:HOH:O	2.46	0.48
1:A:1830:HIS:HB2	3:A:2029:EDO:C1	2.44	0.48

Continued on next page...

Continued from previous page...

Atom-1	Atom-2	Interatomic distance (Å)	Clash overlap (Å)
1:A:1574:HIS:CE1	1:A:1576:VAL:HG13	2.49	0.47
1:A:1597:GLU:HG3	1:A:1638:LEU:HB2	1.97	0.47
1:A:1237:LYS:HE3	5:A:2059:PEG:H41	1.97	0.47
1:A:1447:VAL:HB	5:A:2054:PEG:H21	1.95	0.47
1:A:1749:ILE:HA	1:A:1778:ASN:O	2.15	0.47
5:A:2056:PEG:O2	7:A:2125:HOH:O	2.20	0.47
1:A:1237:LYS:HE3	5:A:2059:PEG:C4	2.45	0.46
1:A:1416:VAL:HG13	1:A:1566[B]:CYS:SG	2.55	0.46
1:A:1319:VAL:HG22	7:A:2621:HOH:O	2.16	0.46
3:A:2028:EDO:H22	7:A:2181:HOH:O	2.16	0.46
3:A:2006:EDO:C1	7:A:2436:HOH:O	2.62	0.46
1:A:1820:ARG:HH22	5:A:2057:PEG:H31	1.80	0.46
1:A:1449:ASN:CB	5:A:2054:PEG:O2	2.64	0.45
1:A:1128:ASN:HB2	5:A:2059:PEG:H42	1.97	0.45
1:A:1675:LYS:HG2	5:A:2064:PEG:O2	2.17	0.45
1:A:1287:GLN:O	4:A:2053:GOL:H31	2.16	0.45
1:A:1214[B]:SER:OG	7:A:2126:HOH:O	2.21	0.45
1:A:1683[A]:LEU:HB2	4:A:2047:GOL:O2	2.17	0.45
1:A:1421:LEU:HD12	7:A:2765:HOH:O	2.17	0.45
1:A:1449:ASN:HD22	5:A:2054:PEG:H12	1.82	0.45
1:A:1814[B]:MET:HG2	7:A:2793:HOH:O	2.17	0.45
1:A:1447:VAL:O	5:A:2054:PEG:O4	2.13	0.44
1:A:1675:LYS:HG2	5:A:2064:PEG:C3	2.47	0.44
1:A:1841[B]:ARG:CZ	7:A:2184:HOH:O	2.65	0.44
1:A:1275:THR:HG1	1:A:1278:SER:HG	1.65	0.44
1:A:1797:ARG:CD	7:A:2242:HOH:O	2.65	0.44
1:A:1202:ALA:N	5:A:2056:PEG:H32	2.33	0.43
1:A:1454[A]:ASP:HA	1:A:1459:GLU:HG2	1.99	0.43
1:A:1188:ARG:HG3	7:A:2448:HOH:O	2.18	0.43
1:A:1585:ASP:OD2	4:A:2046:GOL:H32	2.18	0.43
1:A:1128:ASN:HB2	5:A:2059:PEG:O4	2.18	0.43
1:A:1860:PHE:HB2	1:A:1872:LEU:HD11	2.01	0.42
1:A:1316[A]:SER:OG	1:A:1349:LYS:HD2	2.19	0.42
1:A:1449:ASN:HD22	5:A:2054:PEG:C1	2.32	0.42
1:A:1594:GLN:NE2	7:A:2221:HOH:O	2.53	0.42
1:A:1248:ARG:HD3	7:A:2872:HOH:O	2.19	0.41
1:A:1380:ALA:O	1:A:1381:SER:C	2.58	0.41
1:A:1444:ARG:HG2	1:A:1444:ARG:HH11	1.85	0.41
1:A:1205:VAL:HG21	5:A:2056:PEG:H12	2.02	0.41
1:A:1137:ILE:HD12	7:A:2436:HOH:O	2.20	0.41
1:A:1251:LYS:HG2	7:A:2351:HOH:O	2.21	0.41

Continued on next page...

Continued from previous page...

Atom-1	Atom-2	Interatomic distance (Å)	Clash overlap (Å)
1:A:1409:CYS:HA	1:A:1567:SER:O	2.21	0.41
3:A:2032:EDO:H11	5:A:2056:PEG:H11	2.03	0.41
1:A:1214[A]:SER:OG	1:A:1287:GLN:HG3	2.21	0.41
1:A:1128:ASN:OD1	5:A:2059:PEG:H21	2.21	0.41
1:A:1189:THR:HG23	4:A:2052:GOL:H2	2.03	0.41
1:A:1678:PRO:HD3	3:A:2015:EDO:H21	2.03	0.41
1:A:1318:PRO:HB3	7:A:2129:HOH:O	2.21	0.41
3:A:2028:EDO:H21	7:A:2487:HOH:O	2.21	0.41
1:A:1820:ARG:NH1	5:A:2057:PEG:H41	2.35	0.40
1:A:1445[B]:SER:HB2	5:A:2054:PEG:C3	2.52	0.40
1:A:1692:GLU:HG2	4:A:2048:GOL:C3	2.52	0.40
3:A:2028:EDO:C2	7:A:2487:HOH:O	2.69	0.40
1:A:1735:LYS:NZ	7:A:2150:HOH:O	2.35	0.40

All (23) symmetry-related close contacts are listed below. The label for Atom-2 includes the symmetry operator and encoded unit-cell translations to be applied.

Atom-1	Atom-2	Interatomic distance (Å)	Clash overlap (Å)
7:A:2894:HOH:O	7:A:3004:HOH:O[1_556]	1.80	0.40
7:A:3020:HOH:O	7:A:3053:HOH:O[4_454]	1.83	0.37
7:A:2264:HOH:O	7:A:2285:HOH:O[4_455]	1.84	0.36
7:A:2375:HOH:O	7:A:2985:HOH:O[4_455]	1.85	0.35
7:A:2610:HOH:O	7:A:2653:HOH:O[4_555]	1.86	0.34
7:A:2649:HOH:O	7:A:2968:HOH:O[4_555]	1.86	0.34
7:A:2686:HOH:O	7:A:2767:HOH:O[1_554]	1.88	0.32
7:A:2120:HOH:O	7:A:2137:HOH:O[2_455]	1.90	0.30
7:A:2331:HOH:O	7:A:3080:HOH:O[4_454]	1.93	0.27
7:A:2611:HOH:O	7:A:2649:HOH:O[4_455]	1.94	0.26
7:A:2693:HOH:O	7:A:3031:HOH:O[4_555]	1.94	0.26
7:A:2996:HOH:O	7:A:3010:HOH:O[4_455]	1.94	0.26
7:A:2752:HOH:O	7:A:2754:HOH:O[1_556]	1.95	0.25
7:A:2895:HOH:O	7:A:2912:HOH:O[2_455]	1.96	0.24
7:A:2686:HOH:O	7:A:2987:HOH:O[1_554]	1.98	0.22
1:A:1842:ASP:OD1	3:A:2028:EDO:HO1[2_455]	1.41	0.19
7:A:2429:HOH:O	7:A:2507:HOH:O[1_554]	2.03	0.17
7:A:2106:HOH:O	7:A:2752:HOH:O[1_554]	2.04	0.16
7:A:3023:HOH:O	7:A:3091:HOH:O[4_455]	2.12	0.08
7:A:2285:HOH:O	7:A:3023:HOH:O[4_555]	2.17	0.03
7:A:2605:HOH:O	7:A:2757:HOH:O[4_455]	2.18	0.02
7:A:2693:HOH:O	7:A:2759:HOH:O[4_555]	2.18	0.02
7:A:2868:HOH:O	7:A:2870:HOH:O[4_554]	2.19	0.01

5.3 Torsion angles

5.3.1 Protein backbone

In the following table, the Percentiles column shows the percent Ramachandran outliers of the chain as a percentile score with respect to all X-ray entries followed by that with respect to entries of similar resolution.

The Analysed column shows the number of residues for which the backbone conformation was analysed, and the total number of residues.

Mol	Chain	Analysed	Favoured	Allowed	Outliers	Percentiles	
1	A	692/749 (92%)	678 (98%)	14 (2%)	0	100	100

There are no Ramachandran outliers to report.

5.3.2 Protein sidechains

In the following table, the Percentiles column shows the percent sidechain outliers of the chain as a percentile score with respect to all X-ray entries followed by that with respect to entries of similar resolution.

The Analysed column shows the number of residues for which the sidechain conformation was analysed, and the total number of residues.

Mol	Chain	Analysed	Rotameric	Outliers	Percentiles	
1	A	612/670 (91%)	605 (99%)	7 (1%)	70	57

All (7) residues with a non-rotameric sidechain are listed below:

Mol	Chain	Res	Type
1	A	1232	SER
1	A	1378	LYS
1	A	1444	ARG
1	A	1704	SER
1	A	1753	ARG
1	A	1770	MET
1	A	1875	PHE

Sometimes sidechains can be flipped to improve hydrogen bonding and reduce clashes. There are no such sidechains identified.

5.3.3 RNA ⓘ

There are no RNA molecules in this entry.

5.4 Non-standard residues in protein, DNA, RNA chains ⓘ

There are no non-standard protein/DNA/RNA residues in this entry.

5.5 Carbohydrates ⓘ

There are no oligosaccharides in this entry.

5.6 Ligand geometry ⓘ

Of 65 ligands modelled in this entry, 1 is monoatomic - leaving 64 for Mogul analysis.

In the following table, the Counts columns list the number of bonds (or angles) for which Mogul statistics could be retrieved, the number of bonds (or angles) that are observed in the model and the number of bonds (or angles) that are defined in the Chemical Component Dictionary. The Link column lists molecule types, if any, to which the group is linked. The Z score for a bond length (or angle) is the number of standard deviations the observed value is removed from the expected value. A bond length (or angle) with $|Z| > 2$ is considered an outlier worth inspection. RMSZ is the root-mean-square of all Z scores of the bond lengths (or angles).

Mol	Type	Chain	Res	Link	Bond lengths			Bond angles		
					Counts	RMSZ	$\# Z > 2$	Counts	RMSZ	$\# Z > 2$
3	EDO	A	2040	-	3,3,3	0.40	0	2,2,2	0.45	0
3	EDO	A	2018	-	3,3,3	0.48	0	2,2,2	0.41	0
3	EDO	A	2034	-	3,3,3	0.49	0	2,2,2	0.05	0
3	EDO	A	2010	-	3,3,3	0.41	0	2,2,2	0.70	0
5	PEG	A	2059	-	6,6,6	0.52	0	5,5,5	0.35	0
3	EDO	A	2036	-	3,3,3	0.45	0	2,2,2	0.26	0
3	EDO	A	2020	-	3,3,3	0.45	0	2,2,2	0.25	0
3	EDO	A	2041	-	3,3,3	0.42	0	2,2,2	0.27	0
4	GOL	A	2050	-	5,5,5	0.38	0	5,5,5	0.10	0
5	PEG	A	2061	-	6,6,6	0.54	0	5,5,5	0.46	0
3	EDO	A	2033	-	3,3,3	0.50	0	2,2,2	0.22	0
4	GOL	A	2051	-	5,5,5	0.38	0	5,5,5	0.53	0
3	EDO	A	2017	-	3,3,3	0.41	0	2,2,2	0.37	0
3	EDO	A	2039	-	3,3,3	0.38	0	2,2,2	0.46	0
3	EDO	A	2030	-	3,3,3	0.51	0	2,2,2	0.21	0
5	PEG	A	2063	-	6,6,6	0.49	0	5,5,5	0.38	0
3	EDO	A	2031	-	3,3,3	0.48	0	2,2,2	0.21	0
4	GOL	A	2044	3	5,5,5	0.42	0	5,5,5	0.25	0

Mol	Type	Chain	Res	Link	Bond lengths			Bond angles		
					Counts	RMSZ	# Z > 2	Counts	RMSZ	# Z > 2
4	GOL	A	2052	-	5,5,5	0.38	0	5,5,5	0.20	0
4	GOL	A	2043	-	5,5,5	0.45	0	5,5,5	0.54	0
3	EDO	A	2038	-	3,3,3	0.42	0	2,2,2	0.43	0
3	EDO	A	2025	-	3,3,3	0.48	0	2,2,2	0.26	0
4	GOL	A	2046	1	5,5,5	0.33	0	5,5,5	0.23	0
3	EDO	A	2006	-	3,3,3	0.56	0	2,2,2	0.39	0
3	EDO	A	2027	-	3,3,3	0.39	0	2,2,2	0.39	0
4	GOL	A	2047	1	5,5,5	0.32	0	5,5,5	0.26	0
4	GOL	A	2049	-	5,5,5	0.39	0	5,5,5	0.23	0
3	EDO	A	2024	-	3,3,3	0.39	0	2,2,2	0.38	0
3	EDO	A	2021	4	3,3,3	0.46	0	2,2,2	0.39	0
5	PEG	A	2054	-	6,6,6	0.59	0	5,5,5	0.42	0
3	EDO	A	2009	-	3,3,3	0.46	0	2,2,2	0.38	0
3	EDO	A	2011	-	3,3,3	0.51	0	2,2,2	0.06	0
5	PEG	A	2060	-	6,6,6	0.49	0	5,5,5	0.31	0
2	ADP	A	2001	6	24,29,29	0.98	0	29,45,45	1.28	2 (6%)
5	PEG	A	2057	-	6,6,6	0.51	0	5,5,5	0.62	0
4	GOL	A	2042	-	5,5,5	0.42	0	5,5,5	1.06	0
3	EDO	A	2012	-	3,3,3	0.36	0	2,2,2	0.17	0
3	EDO	A	2014	-	3,3,3	0.41	0	2,2,2	0.35	0
3	EDO	A	2023	-	3,3,3	0.45	0	2,2,2	0.33	0
3	EDO	A	2026	-	3,3,3	0.57	0	2,2,2	0.24	0
4	GOL	A	2045	-	5,5,5	0.46	0	5,5,5	0.35	0
3	EDO	A	2028	-	3,3,3	0.34	0	2,2,2	0.42	0
3	EDO	A	2016	-	3,3,3	0.46	0	2,2,2	0.29	0
5	PEG	A	2056	-	6,6,6	0.50	0	5,5,5	0.83	0
3	EDO	A	2005	-	3,3,3	0.48	0	2,2,2	0.37	0
3	EDO	A	2037	-	3,3,3	0.27	0	2,2,2	0.54	0
3	EDO	A	2029	-	3,3,3	0.46	0	2,2,2	0.22	0
4	GOL	A	2048	-	5,5,5	0.35	0	5,5,5	0.30	0
5	PEG	A	2055	-	6,6,6	0.44	0	5,5,5	0.80	0
3	EDO	A	2022	-	3,3,3	0.42	0	2,2,2	0.56	0
4	GOL	A	2053	1	5,5,5	0.62	0	5,5,5	0.70	0
3	EDO	A	2004	-	3,3,3	0.46	0	2,2,2	0.35	0
3	EDO	A	2003	-	3,3,3	0.38	0	2,2,2	0.28	0
3	EDO	A	2032	-	3,3,3	0.41	0	2,2,2	0.27	0
5	PEG	A	2062	-	6,6,6	0.49	0	5,5,5	0.35	0
5	PEG	A	2058	-	6,6,6	0.53	0	5,5,5	0.43	0
3	EDO	A	2035	-	3,3,3	0.46	0	2,2,2	0.30	0
3	EDO	A	2007	-	3,3,3	0.58	0	2,2,2	0.30	0
3	EDO	A	2013	-	3,3,3	0.46	0	2,2,2	0.41	0
3	EDO	A	2019	-	3,3,3	0.52	0	2,2,2	0.08	0
3	EDO	A	2015	-	3,3,3	0.52	0	2,2,2	0.31	0

Mol	Type	Chain	Res	Link	Bond lengths			Bond angles		
					Counts	RMSZ	# Z > 2	Counts	RMSZ	# Z > 2
5	PEG	A	2064	-	6,6,6	0.53	0	5,5,5	0.50	0
3	EDO	A	2008	-	3,3,3	0.43	0	2,2,2	0.34	0
3	EDO	A	2002	-	3,3,3	0.48	0	2,2,2	0.20	0

In the following table, the Chirals column lists the number of chiral outliers, the number of chiral centers analysed, the number of these observed in the model and the number defined in the Chemical Component Dictionary. Similar counts are reported in the Torsion and Rings columns. '-' means no outliers of that kind were identified.

Mol	Type	Chain	Res	Link	Chirals	Torsions	Rings
3	EDO	A	2040	-	-	0/1/1/1	-
3	EDO	A	2018	-	-	0/1/1/1	-
3	EDO	A	2034	-	-	0/1/1/1	-
3	EDO	A	2010	-	-	1/1/1/1	-
5	PEG	A	2059	-	-	1/4/4/4	-
3	EDO	A	2036	-	-	0/1/1/1	-
3	EDO	A	2020	-	-	1/1/1/1	-
3	EDO	A	2041	-	-	0/1/1/1	-
4	GOL	A	2050	-	-	3/4/4/4	-
5	PEG	A	2061	-	-	0/4/4/4	-
3	EDO	A	2033	-	-	1/1/1/1	-
4	GOL	A	2051	-	-	3/4/4/4	-
3	EDO	A	2017	-	-	0/1/1/1	-
3	EDO	A	2039	-	-	0/1/1/1	-
3	EDO	A	2030	-	-	1/1/1/1	-
5	PEG	A	2063	-	-	2/4/4/4	-
3	EDO	A	2031	-	-	0/1/1/1	-
4	GOL	A	2044	3	-	0/4/4/4	-
4	GOL	A	2052	-	-	4/4/4/4	-
4	GOL	A	2043	-	-	2/4/4/4	-
3	EDO	A	2038	-	-	1/1/1/1	-
3	EDO	A	2025	-	-	0/1/1/1	-
4	GOL	A	2046	1	-	3/4/4/4	-
3	EDO	A	2006	-	-	0/1/1/1	-
3	EDO	A	2027	-	-	0/1/1/1	-
4	GOL	A	2047	1	-	2/4/4/4	-
4	GOL	A	2049	-	-	2/4/4/4	-
3	EDO	A	2024	-	-	0/1/1/1	-
3	EDO	A	2021	4	-	0/1/1/1	-
5	PEG	A	2054	-	-	2/4/4/4	-
3	EDO	A	2009	-	-	1/1/1/1	-

Continued on next page...

Continued from previous page...

Mol	Type	Chain	Res	Link	Chirals	Torsions	Rings
3	EDO	A	2011	-	-	0/1/1/1	-
5	PEG	A	2060	-	-	1/4/4/4	-
2	ADP	A	2001	6	-	0/12/32/32	0/3/3/3
5	PEG	A	2057	-	-	2/4/4/4	-
4	GOL	A	2042	-	-	4/4/4/4	-
3	EDO	A	2012	-	-	0/1/1/1	-
3	EDO	A	2014	-	-	0/1/1/1	-
3	EDO	A	2023	-	-	0/1/1/1	-
3	EDO	A	2026	-	-	1/1/1/1	-
4	GOL	A	2045	-	-	2/4/4/4	-
3	EDO	A	2028	-	-	0/1/1/1	-
3	EDO	A	2016	-	-	1/1/1/1	-
5	PEG	A	2056	-	-	1/4/4/4	-
3	EDO	A	2005	-	-	0/1/1/1	-
3	EDO	A	2037	-	-	1/1/1/1	-
3	EDO	A	2029	-	-	1/1/1/1	-
4	GOL	A	2048	-	-	2/4/4/4	-
5	PEG	A	2055	-	-	2/4/4/4	-
3	EDO	A	2022	-	-	1/1/1/1	-
4	GOL	A	2053	1	-	4/4/4/4	-
3	EDO	A	2004	-	-	1/1/1/1	-
3	EDO	A	2003	-	-	0/1/1/1	-
3	EDO	A	2032	-	-	1/1/1/1	-
5	PEG	A	2062	-	-	1/4/4/4	-
5	PEG	A	2058	-	-	2/4/4/4	-
3	EDO	A	2035	-	-	0/1/1/1	-
3	EDO	A	2007	-	-	0/1/1/1	-
3	EDO	A	2013	-	-	0/1/1/1	-
3	EDO	A	2019	-	-	0/1/1/1	-
3	EDO	A	2015	-	-	0/1/1/1	-
5	PEG	A	2064	-	-	4/4/4/4	-
3	EDO	A	2008	-	-	0/1/1/1	-
3	EDO	A	2002	-	-	0/1/1/1	-

There are no bond length outliers.

All (2) bond angle outliers are listed below:

Mol	Chain	Res	Type	Atoms	Z	Observed(°)	Ideal(°)
2	A	2001	ADP	N6-C6-N1	3.13	125.06	118.57
2	A	2001	ADP	N3-C2-N1	-2.56	124.67	128.68

There are no chirality outliers.

All (62) torsion outliers are listed below:

Mol	Chain	Res	Type	Atoms
4	A	2042	GOL	O1-C1-C2-C3
4	A	2042	GOL	C1-C2-C3-O3
4	A	2043	GOL	C1-C2-C3-O3
4	A	2046	GOL	O1-C1-C2-C3
4	A	2050	GOL	C1-C2-C3-O3
4	A	2051	GOL	C1-C2-C3-O3
4	A	2052	GOL	C1-C2-C3-O3
4	A	2053	GOL	O1-C1-C2-C3
5	A	2064	PEG	O2-C3-C4-O4
5	A	2059	PEG	O1-C1-C2-O2
5	A	2063	PEG	O2-C3-C4-O4
3	A	2037	EDO	O1-C1-C2-O2
5	A	2054	PEG	O2-C3-C4-O4
4	A	2045	GOL	C1-C2-C3-O3
4	A	2047	GOL	C1-C2-C3-O3
4	A	2048	GOL	C1-C2-C3-O3
4	A	2053	GOL	C1-C2-C3-O3
4	A	2042	GOL	O1-C1-C2-O2
4	A	2051	GOL	O2-C2-C3-O3
4	A	2053	GOL	O1-C1-C2-O2
3	A	2004	EDO	O1-C1-C2-O2
3	A	2010	EDO	O1-C1-C2-O2
3	A	2026	EDO	O1-C1-C2-O2
3	A	2029	EDO	O1-C1-C2-O2
3	A	2033	EDO	O1-C1-C2-O2
3	A	2038	EDO	O1-C1-C2-O2
5	A	2064	PEG	C1-C2-O2-C3
4	A	2042	GOL	O2-C2-C3-O3
4	A	2043	GOL	O2-C2-C3-O3
4	A	2046	GOL	O1-C1-C2-O2
4	A	2048	GOL	O2-C2-C3-O3
4	A	2052	GOL	O1-C1-C2-O2
4	A	2052	GOL	O2-C2-C3-O3
4	A	2045	GOL	O2-C2-C3-O3
4	A	2047	GOL	O2-C2-C3-O3
4	A	2049	GOL	O1-C1-C2-O2
4	A	2050	GOL	O1-C1-C2-O2
5	A	2062	PEG	O2-C3-C4-O4
5	A	2058	PEG	C1-C2-O2-C3
5	A	2063	PEG	C1-C2-O2-C3

Continued on next page...

Continued from previous page...

Mol	Chain	Res	Type	Atoms
4	A	2050	GOL	O2-C2-C3-O3
4	A	2053	GOL	O2-C2-C3-O3
5	A	2058	PEG	O2-C3-C4-O4
5	A	2064	PEG	O1-C1-C2-O2
5	A	2056	PEG	C1-C2-O2-C3
3	A	2016	EDO	O1-C1-C2-O2
3	A	2022	EDO	O1-C1-C2-O2
3	A	2030	EDO	O1-C1-C2-O2
3	A	2032	EDO	O1-C1-C2-O2
5	A	2055	PEG	O1-C1-C2-O2
5	A	2064	PEG	C4-C3-O2-C2
5	A	2057	PEG	C1-C2-O2-C3
4	A	2051	GOL	O1-C1-C2-C3
5	A	2054	PEG	O1-C1-C2-O2
3	A	2009	EDO	O1-C1-C2-O2
3	A	2020	EDO	O1-C1-C2-O2
4	A	2046	GOL	C1-C2-C3-O3
4	A	2049	GOL	O1-C1-C2-C3
4	A	2052	GOL	O1-C1-C2-C3
5	A	2057	PEG	C4-C3-O2-C2
5	A	2060	PEG	O2-C3-C4-O4
5	A	2055	PEG	O2-C3-C4-O4

There are no ring outliers.

30 monomers are involved in 68 short contacts:

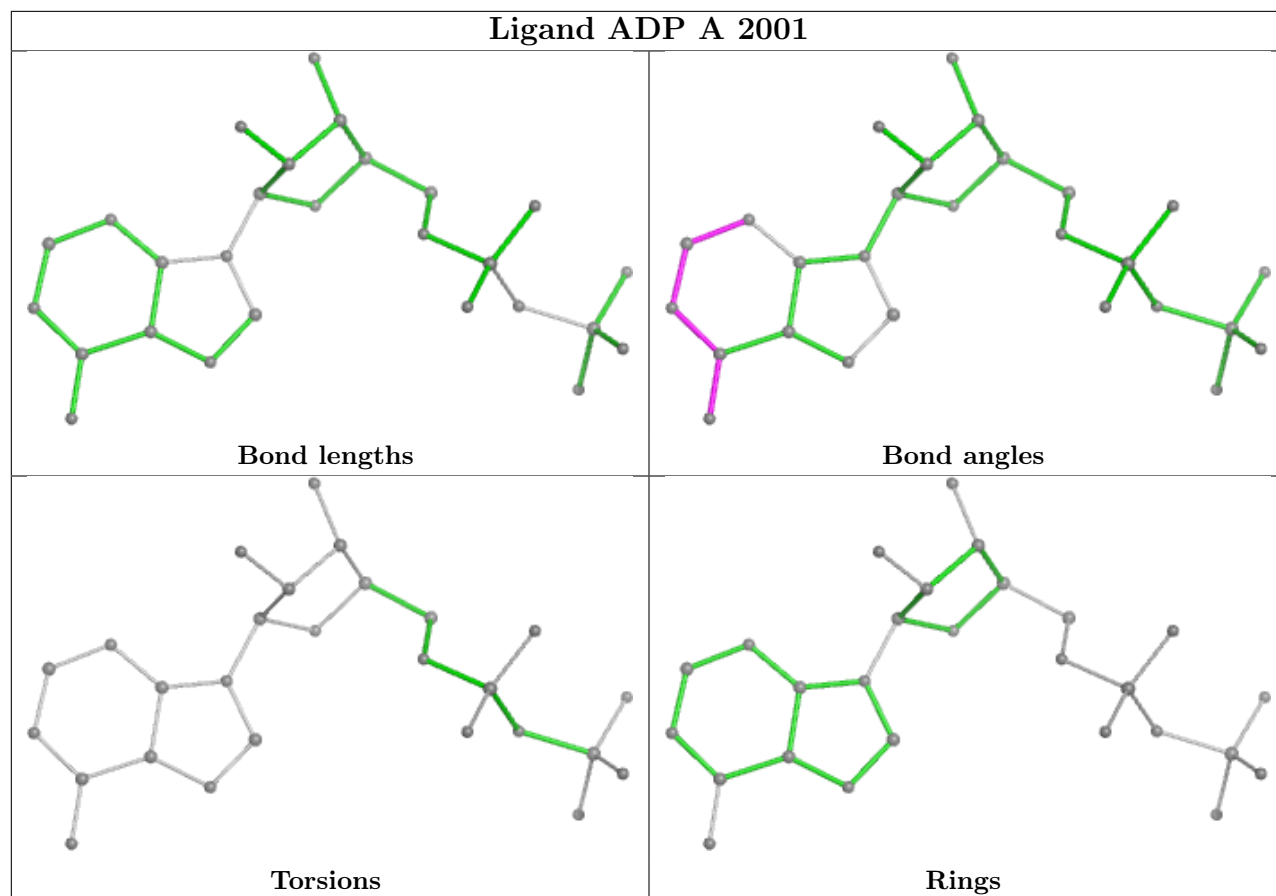
Mol	Chain	Res	Type	Clashes	Symm-Clashes
3	A	2018	EDO	1	0
5	A	2059	PEG	10	0
3	A	2036	EDO	1	0
4	A	2050	GOL	1	0
5	A	2061	PEG	1	0
3	A	2039	EDO	1	0
5	A	2063	PEG	1	0
4	A	2052	GOL	2	0
3	A	2038	EDO	1	0
4	A	2046	GOL	1	0
3	A	2006	EDO	1	0
4	A	2047	GOL	6	0
4	A	2049	GOL	1	0
5	A	2054	PEG	9	0
5	A	2057	PEG	4	0

Continued on next page...

Continued from previous page...

Mol	Chain	Res	Type	Clashes	Symm-Clashes
3	A	2014	EDO	3	0
3	A	2023	EDO	1	0
3	A	2028	EDO	3	1
5	A	2056	PEG	5	0
3	A	2037	EDO	2	0
3	A	2029	EDO	2	0
4	A	2048	GOL	2	0
4	A	2053	GOL	2	0
3	A	2032	EDO	1	0
5	A	2062	PEG	1	0
3	A	2035	EDO	1	0
3	A	2015	EDO	1	0
5	A	2064	PEG	3	0
3	A	2008	EDO	2	0
3	A	2002	EDO	1	0

The following is a two-dimensional graphical depiction of Mogul quality analysis of bond lengths, bond angles, torsion angles, and ring geometry for all instances of the Ligand of Interest. In addition, ligands with molecular weight > 250 and outliers as shown on the validation Tables will also be included. For torsion angles, if less than 5% of the Mogul distribution of torsion angles is within 10 degrees of the torsion angle in question, then that torsion angle is considered an outlier. Any bond that is central to one or more torsion angles identified as an outlier by Mogul will be highlighted in the graph. For rings, the root-mean-square deviation (RMSD) between the ring in question and similar rings identified by Mogul is calculated over all ring torsion angles. If the average RMSD is greater than 60 degrees and the minimal RMSD between the ring in question and any Mogul-identified rings is also greater than 60 degrees, then that ring is considered an outlier. The outliers are highlighted in purple. The color gray indicates Mogul did not find sufficient equivalents in the CSD to analyse the geometry.



5.7 Other polymers [i](#)

There are no such residues in this entry.

5.8 Polymer linkage issues [i](#)

There are no chain breaks in this entry.

6 Fit of model and data ⓘ

6.1 Protein, DNA and RNA chains ⓘ

In the following table, the column labelled ‘#RSRZ > 2’ contains the number (and percentage) of RSRZ outliers, followed by percent RSRZ outliers for the chain as percentile scores relative to all X-ray entries and entries of similar resolution. The OWAB column contains the minimum, median, 95th percentile and maximum values of the occupancy-weighted average B-factor per residue. The column labelled ‘Q < 0.9’ lists the number of (and percentage) of residues with an average occupancy less than 0.9.

Mol	Chain	Analysed	<RSRZ>	#RSRZ > 2		OWAB(Å ²)	Q < 0.9
1	A	682/749 (91%)	-0.20	29 (4%)	40 47	14, 40, 92, 124	19 (2%)

All (29) RSRZ outliers are listed below:

Mol	Chain	Res	Type	RSRZ
1	A	1198[A]	TYR	6.2
1	A	1097	LEU	5.4
1	A	1802	LYS	4.5
1	A	1798	ALA	4.5
1	A	1098	ALA	4.3
1	A	1714	MET	4.0
1	A	1703	ILE	3.9
1	A	1543	ASN	3.9
1	A	1102	LEU	3.4
1	A	1805	VAL	3.1
1	A	1875	PHE	3.1
1	A	1096	GLU	3.0
1	A	1380	ALA	3.0
1	A	1177	ASP	2.7
1	A	1544	TYR	2.7
1	A	1099	LYS	2.6
1	A	1704	SER	2.5
1	A	1753	ARG	2.4
1	A	1446	ASP	2.3
1	A	1397	THR	2.2
1	A	1470	TYR	2.2
1	A	1807	PHE	2.2
1	A	1381	SER	2.2
1	A	1450	VAL	2.2
1	A	1398	GLU	2.1
1	A	1444	ARG	2.1
1	A	1447	VAL	2.1

Continued on next page...

Continued from previous page...

Mol	Chain	Res	Type	RSRZ
1	A	1396	ASN	2.1
1	A	1803	SER	2.1

6.2 Non-standard residues in protein, DNA, RNA chains [i](#)

There are no non-standard protein/DNA/RNA residues in this entry.

6.3 Carbohydrates [i](#)

There are no monosaccharides in this entry.

6.4 Ligands [i](#)

In the following table, the Atoms column lists the number of modelled atoms in the group and the number defined in the chemical component dictionary. The B-factors column lists the minimum, median, 95th percentile and maximum values of B factors of atoms in the group. The column labelled 'Q<0.9' lists the number of atoms with occupancy less than 0.9.

Mol	Type	Chain	Res	Atoms	RSCC	RSR	B-factors(\AA^2)	Q<0.9
3	EDO	A	2041	4/4	0.31	0.23	177,213,221,223	0
5	PEG	A	2058	7/7	0.55	0.24	99,139,195,195	0
4	GOL	A	2044	6/6	0.56	0.15	136,153,180,184	0
5	PEG	A	2056	7/7	0.65	0.20	107,142,175,175	0
3	EDO	A	2021	4/4	0.66	0.16	109,127,140,153	0
3	EDO	A	2032	4/4	0.67	0.28	139,167,169,170	0
4	GOL	A	2047	6/6	0.68	0.23	100,124,143,149	0
5	PEG	A	2062	7/7	0.69	0.34	131,158,183,184	0
5	PEG	A	2059	7/7	0.70	0.30	161,193,225,228	0
4	GOL	A	2052	6/6	0.74	0.21	190,228,235,242	0
4	GOL	A	2051	6/6	0.76	0.26	93,118,154,173	0
3	EDO	A	2040	4/4	0.76	0.32	100,139,164,180	0
4	GOL	A	2050	6/6	0.76	0.20	134,160,171,173	0
4	GOL	A	2049	6/6	0.77	0.21	139,167,172,174	0
5	PEG	A	2060	7/7	0.78	0.22	136,163,188,188	0
4	GOL	A	2046	6/6	0.78	0.22	135,154,177,185	0
5	PEG	A	2063	7/7	0.78	0.29	161,193,229,229	0
3	EDO	A	2033	4/4	0.79	0.18	81,103,111,123	0
5	PEG	A	2054	7/7	0.79	0.16	73,93,121,121	0
3	EDO	A	2039	4/4	0.80	0.33	143,172,184,189	0
3	EDO	A	2018	4/4	0.81	0.18	65,79,81,95	0

Continued on next page...

Continued from previous page...

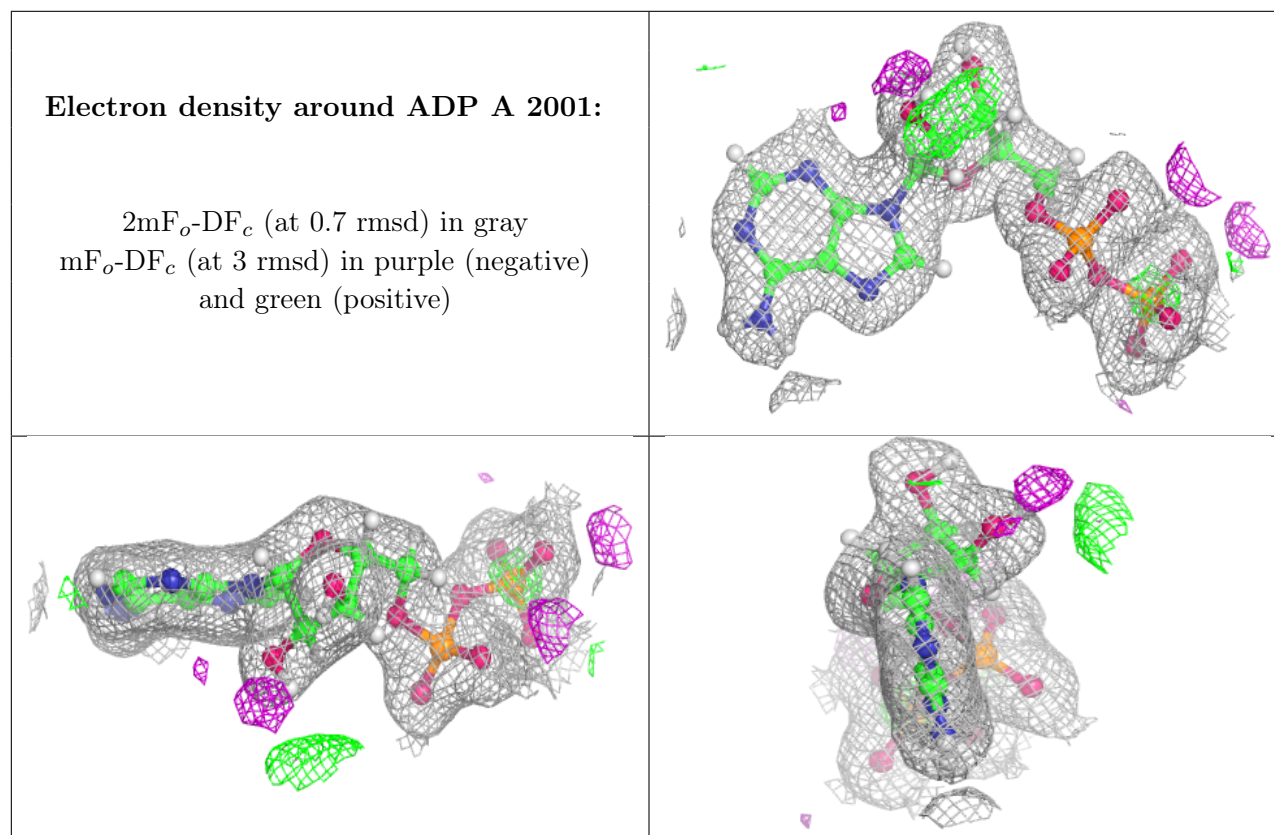
Mol	Type	Chain	Res	Atoms	RSCC	RSR	B-factors(\AA^2)	Q<0.9
3	EDO	A	2013	4/4	0.81	0.16	63,76,84,99	0
3	EDO	A	2036	4/4	0.81	0.27	116,139,142,143	0
3	EDO	A	2027	4/4	0.81	0.27	87,104,110,118	0
4	GOL	A	2053	6/6	0.82	0.20	77,109,147,177	0
3	EDO	A	2017	4/4	0.82	0.15	73,87,92,92	0
4	GOL	A	2048	6/6	0.82	0.21	153,184,186,186	0
3	EDO	A	2008	4/4	0.82	0.19	81,97,105,105	0
3	EDO	A	2030	4/4	0.83	0.16	70,98,116,126	0
3	EDO	A	2035	4/4	0.83	0.16	88,105,116,122	0
5	PEG	A	2057	7/7	0.84	0.27	76,101,122,128	0
3	EDO	A	2004	4/4	0.84	0.18	80,96,101,101	0
5	PEG	A	2055	7/7	0.85	0.16	48,84,114,114	0
3	EDO	A	2024	4/4	0.85	0.26	77,100,111,124	0
3	EDO	A	2014	4/4	0.86	0.16	50,65,82,82	0
3	EDO	A	2010	4/4	0.87	0.19	74,88,96,96	0
3	EDO	A	2028	4/4	0.87	0.28	96,121,135,145	0
3	EDO	A	2022	4/4	0.87	0.26	116,139,142,142	0
3	EDO	A	2020	4/4	0.87	0.13	61,79,85,97	0
4	GOL	A	2045	6/6	0.88	0.16	44,74,97,97	0
3	EDO	A	2029	4/4	0.88	0.14	69,83,85,94	0
3	EDO	A	2019	4/4	0.88	0.13	51,73,84,93	0
4	GOL	A	2042	6/6	0.88	0.16	56,72,90,90	0
4	GOL	A	2043	6/6	0.88	0.12	53,83,100,104	0
3	EDO	A	2034	4/4	0.88	0.17	80,96,110,112	0
5	PEG	A	2064	7/7	0.88	0.28	187,232,279,289	0
5	PEG	A	2061	7/7	0.89	0.31	99,125,138,144	0
3	EDO	A	2023	4/4	0.89	0.20	74,97,115,117	0
3	EDO	A	2005	4/4	0.90	0.11	62,75,89,89	0
3	EDO	A	2025	4/4	0.90	0.11	81,97,100,103	0
3	EDO	A	2031	4/4	0.90	0.17	88,106,120,120	0
3	EDO	A	2038	4/4	0.90	0.26	128,153,161,161	0
3	EDO	A	2016	4/4	0.90	0.14	48,88,100,108	0
3	EDO	A	2003	4/4	0.90	0.11	45,54,62,62	0
3	EDO	A	2015	4/4	0.91	0.14	60,72,79,79	0
3	EDO	A	2026	4/4	0.91	0.10	50,72,89,101	0
3	EDO	A	2037	4/4	0.91	0.15	32,56,71,86	0
3	EDO	A	2009	4/4	0.92	0.16	63,76,87,93	0
3	EDO	A	2007	4/4	0.92	0.14	48,71,76,91	0
3	EDO	A	2002	4/4	0.93	0.15	36,82,108,113	0
3	EDO	A	2006	4/4	0.94	0.10	46,62,75,75	0
3	EDO	A	2011	4/4	0.94	0.10	44,68,80,86	0
3	EDO	A	2012	4/4	0.98	0.05	36,47,57,59	0

Continued on next page...

Continued from previous page...

Mol	Type	Chain	Res	Atoms	RSCC	RSR	B-factors(\AA^2)	Q<0.9
2	ADP	A	2001	27/27	0.99	0.04	22,28,38,42	0
6	MG	A	2065	1/1	0.99	0.02	23,23,23,23	0

The following is a graphical depiction of the model fit to experimental electron density of all instances of the Ligand of Interest. In addition, ligands with molecular weight > 250 and outliers as shown on the geometry validation Tables will also be included. Each fit is shown from different orientation to approximate a three-dimensional view.



6.5 Other polymers ⓘ

There are no such residues in this entry.