



## wwPDB EM Validation Summary Report ⓘ

Sep 28, 2024 – 03:13 PM EDT

PDB ID : 7MLV  
EMDB ID : EMD-23911  
Title : Cryo-EM reveals partially and fully assembled native glycine receptors, homomeric tetramer  
Authors : Zhu, H.; Gouaux, E.  
Deposited on : 2021-04-29  
Resolution : 4.10 Å (reported)

This is a wwPDB EM Validation Summary Report for a publicly released PDB entry.

We welcome your comments at [validation@mail.wwpdb.org](mailto:validation@mail.wwpdb.org)

A user guide is available at

<https://www.wwpdb.org/validation/2017/EMValidationReportHelp>  
with specific help available everywhere you see the ⓘ symbol.

The types of validation reports are described at

<http://www.wwpdb.org/validation/2017/FAQs#types>.

---

The following versions of software and data (see [references ⓘ](#)) were used in the production of this report:

EMDB validation analysis : 0.0.1.dev113  
Mogul : 2022.3.0, CSD as543be (2022)  
MolProbity : 4.02b-467  
Percentile statistics : 20231227.v01 (using entries in the PDB archive December 27th 2023)  
MapQ : 1.9.13  
Ideal geometry (proteins) : Engh & Huber (2001)  
Ideal geometry (DNA, RNA) : Parkinson et al. (1996)  
Validation Pipeline (wwPDB-VP) : 2.39

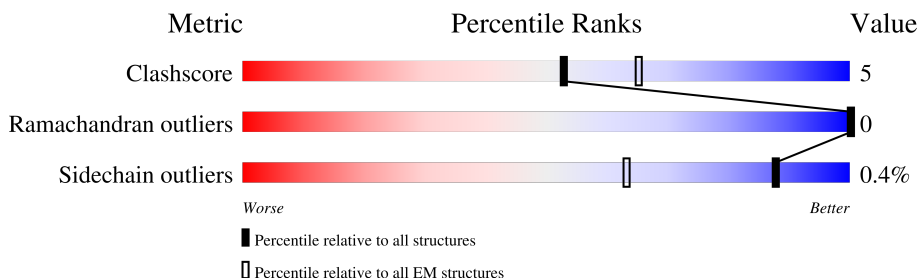
# 1 Overall quality at a glance

The following experimental techniques were used to determine the structure:

*ELECTRON MICROSCOPY*

The reported resolution of this entry is 4.10 Å.

Percentile scores (ranging between 0-100) for global validation metrics of the entry are shown in the following graphic. The table shows the number of entries on which the scores are based.



Metric	Whole archive (#Entries)	EM structures (#Entries)
Clashscore	210492	15764
Ramachandran outliers	207382	16835
Sidechain outliers	206894	16415

The table below summarises the geometric issues observed across the polymeric chains and their fit to the map. The red, orange, yellow and green segments of the bar indicate the fraction of residues that contain outliers for  $\geq 3$ , 2, 1 and 0 types of geometric quality criteria respectively. A grey segment represents the fraction of residues that are not modelled. The numeric value for each fraction is indicated below the corresponding segment, with a dot representing fractions  $\leq 5\%$ . The upper red bar (where present) indicates the fraction of residues that have poor fit to the EM map (all-atom inclusion  $< 40\%$ ). The numeric value is given above the bar.

Mol	Chain	Length	Quality of chain
1	I	107	<div> <div>10%</div> <div>86%</div> <div>10%</div> <div>•</div> </div>
1	J	107	<div> <div>7%</div> <div>78%</div> <div>16%</div> <div>• 6%</div> </div>
1	K	107	<div> <div>38%</div> <div>83%</div> <div>12%</div> <div>5%</div> </div>
1	M	107	<div> <div>7%</div> <div>79%</div> <div>18%</div> <div>•</div> </div>
2	F	118	<div> <div>34%</div> <div>93%</div> <div>• •</div> </div>
2	G	118	<div> <div>13%</div> <div>90%</div> <div>8%</div> <div>•</div> </div>
2	H	118	<div> <div>16%</div> <div>86%</div> <div>11%</div> <div>•</div> </div>
2	L	118	<div> <div>9%</div> <div>90%</div> <div>8%</div> <div>•</div> </div>

Continued on next page...

*Continued from previous page...*

Mol	Chain	Length	Quality of chain
3	A	456	
3	B	456	
3	C	456	
3	D	456	
4	N	5	
5	O	4	
6	P	6	

## 2 Entry composition

There are 9 unique types of molecules in this entry. The entry contains 15055 atoms, of which 0 are hydrogens and 0 are deuteriums.

In the tables below, the AltConf column contains the number of residues with at least one atom in alternate conformation and the Trace column contains the number of residues modelled with at most 2 atoms.

- Molecule 1 is a protein called 3D1 Fab Light Chain.

Mol	Chain	Residues	Atoms					AltConf	Trace
1	J	101	Total	C	N	O	S	0	0
			763	476	133	151	3		
1	K	102	Total	C	N	O	S	0	0
			782	490	135	153	4		
1	M	103	Total	C	N	O	S	0	0
			777	487	133	153	4		
1	I	103	Total	C	N	O	S	0	0
			777	487	133	153	4		

- Molecule 2 is a protein called 3D1 Fab Heavy Chain.

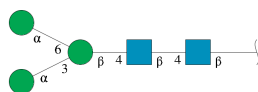
Mol	Chain	Residues	Atoms					AltConf	Trace
2	G	115	Total	C	N	O	S	0	0
			881	560	146	170	5		
2	F	115	Total	C	N	O	S	0	0
			878	558	146	170	4		
2	L	115	Total	C	N	O	S	0	0
			884	561	149	170	4		
2	H	115	Total	C	N	O	S	0	0
			875	557	143	170	5		

- Molecule 3 is a protein called Glycine receptor alpha 1.

Mol	Chain	Residues	Atoms					AltConf	Trace
3	D	170	Total	C	N	O	S	0	0
			1299	829	222	241	7		
3	A	310	Total	C	N	O	S	0	0
			2456	1600	397	439	20		
3	B	296	Total	C	N	O	S	0	0
			2292	1510	364	400	18		
3	C	274	Total	C	N	O	S	0	0
			2125	1390	339	380	16		

- Molecule 4 is an oligosaccharide called alpha-D-mannopyranose-(1-3)-[alpha-D-mannopyran

ose-(1-6)]beta-D-mannopyranose-(1-4)-2-acetamido-2-deoxy-beta-D-glucopyranose-(1-4)-2-acetamido-2-deoxy-beta-D-glucopyranose.



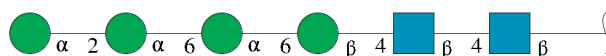
Mol	Chain	Residues	Atoms				AltConf	Trace
4	N	5	Total	C	N	O	0	0
			61	34	2	25		

- Molecule 5 is an oligosaccharide called alpha-D-mannopyranose-(1-3)-beta-D-mannopyranose-(1-4)-2-acetamido-2-deoxy-beta-D-glucopyranose-(1-4)-2-acetamido-2-deoxy-beta-D-glucopyranose.



Mol	Chain	Residues	Atoms				AltConf	Trace
5	O	4	Total	C	N	O	0	0
			50	28	2	20		

- Molecule 6 is an oligosaccharide called alpha-D-mannopyranose-(1-2)-alpha-D-mannopyranose-(1-6)-alpha-D-mannopyranose-(1-6)-beta-D-mannopyranose-(1-4)-2-acetamido-2-deoxy-beta-D-glucopyranose-(1-4)-2-acetamido-2-deoxy-beta-D-glucopyranose.



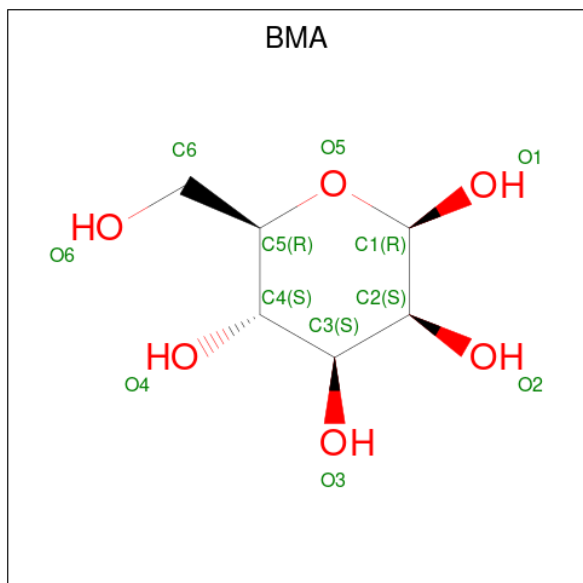
Mol	Chain	Residues	Atoms				AltConf	Trace
6	P	6	Total	C	N	O	0	0
			72	40	2	30		

- Molecule 7 is alpha-D-mannopyranose (three-letter code: MAN) (formula: C<sub>6</sub>H<sub>12</sub>O<sub>6</sub>).



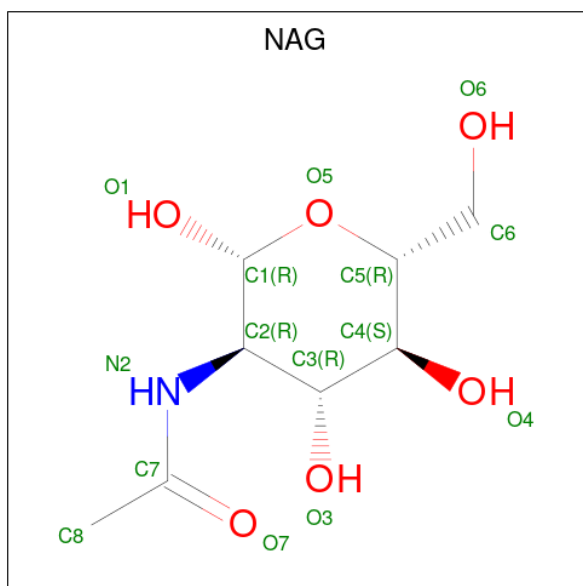
Mol	Chain	Residues	Atoms			AltConf
7	D	1	Total	C	O	0
			11	6	5	
7	D	1	Total	C	O	0
			11	6	5	
7	D	1	Total	C	O	0
			11	6	5	
7	D	1	Total	C	O	0
			11	6	5	

- Molecule 8 is beta-D-mannopyranose (three-letter code: BMA) (formula:  $C_6H_{12}O_6$ ).



Mol	Chain	Residues	Atoms			AltConf
8	D	1	Total	C	O	0
			11	6	5	

- Molecule 9 is 2-acetamido-2-deoxy-beta-D-glucopyranose (three-letter code: NAG) (formula:  $C_8H_{15}NO_6$ ).

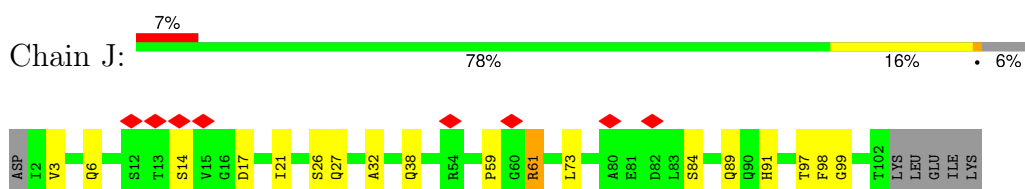


Mol	Chain	Residues	Atoms				AltConf
9	D	1	Total	C	N	O	0
			14	8	1	5	
9	D	1	Total	C	N	O	0
			14	8	1	5	

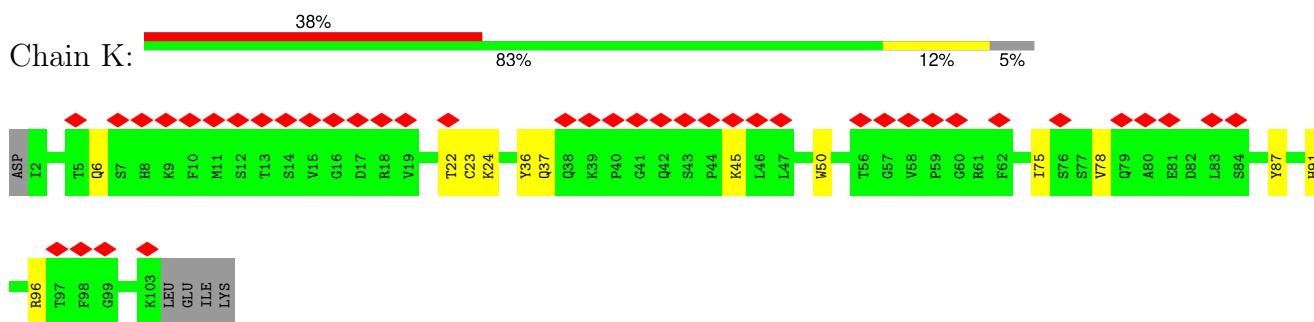
### 3 Residue-property plots [i](#)

These plots are drawn for all protein, RNA, DNA and oligosaccharide chains in the entry. The first graphic for a chain summarises the proportions of the various outlier classes displayed in the second graphic. The second graphic shows the sequence view annotated by issues in geometry and atom inclusion in map density. Residues are color-coded according to the number of geometric quality criteria for which they contain at least one outlier: green = 0, yellow = 1, orange = 2 and red = 3 or more. A red diamond above a residue indicates a poor fit to the EM map for this residue (all-atom inclusion < 40%). Stretches of 2 or more consecutive residues without any outlier are shown as a green connector. Residues present in the sample, but not in the model, are shown in grey.

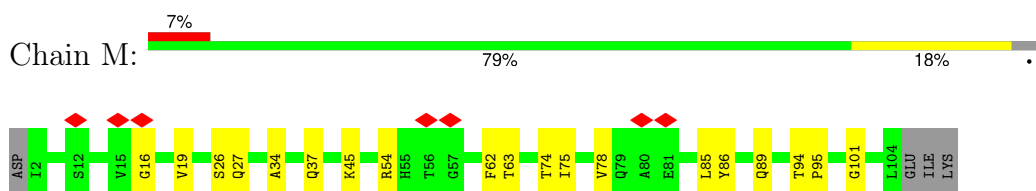
- Molecule 1: 3D1 Fab Light Chain



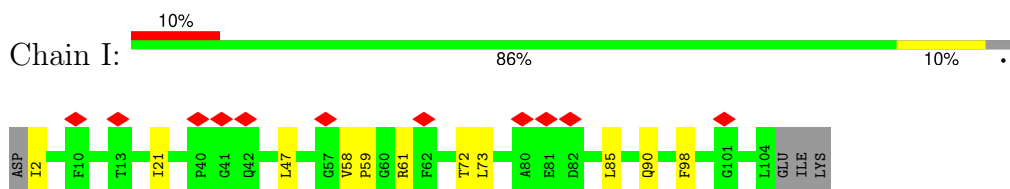
- Molecule 1: 3D1 Fab Light Chain



- Molecule 1: 3D1 Fab Light Chain



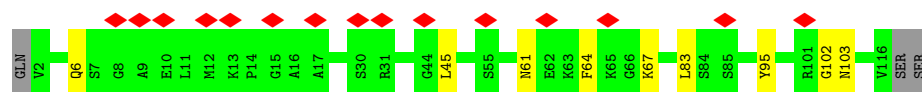
- Molecule 1: 3D1 Fab Light Chain



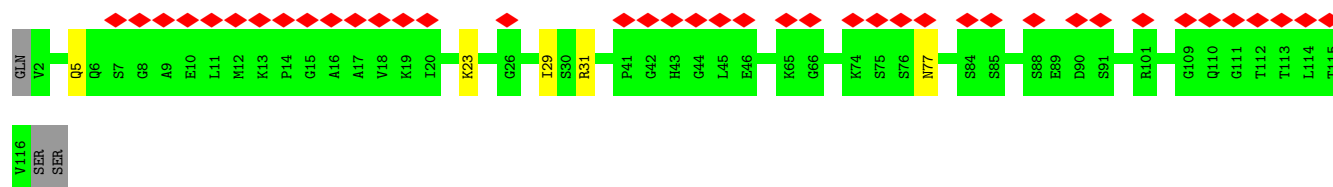
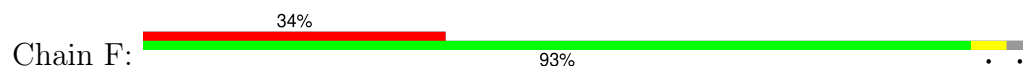
- Molecule 2: 3D1 Fab Heavy Chain



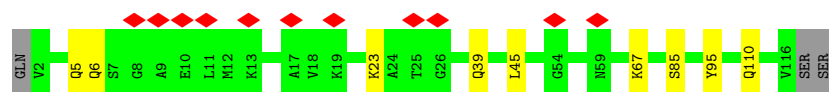
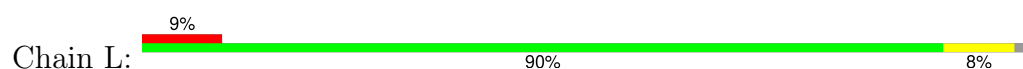




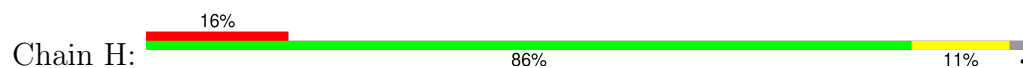
• Molecule 2: 3D1 Fab Heavy Chain



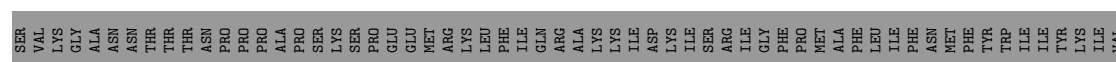
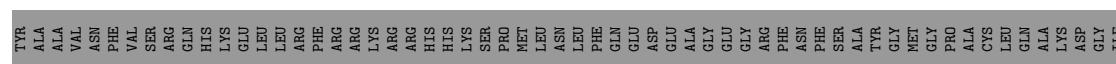
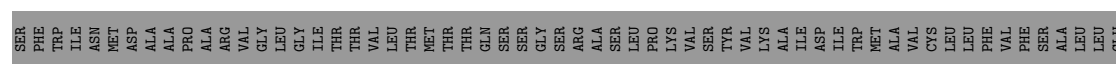
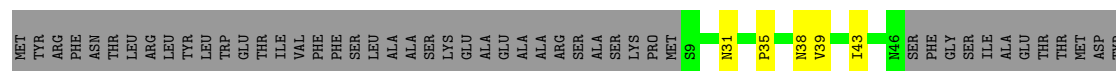
• Molecule 2: 3D1 Fab Heavy Chain



• Molecule 2: 3D1 Fab Heavy Chain

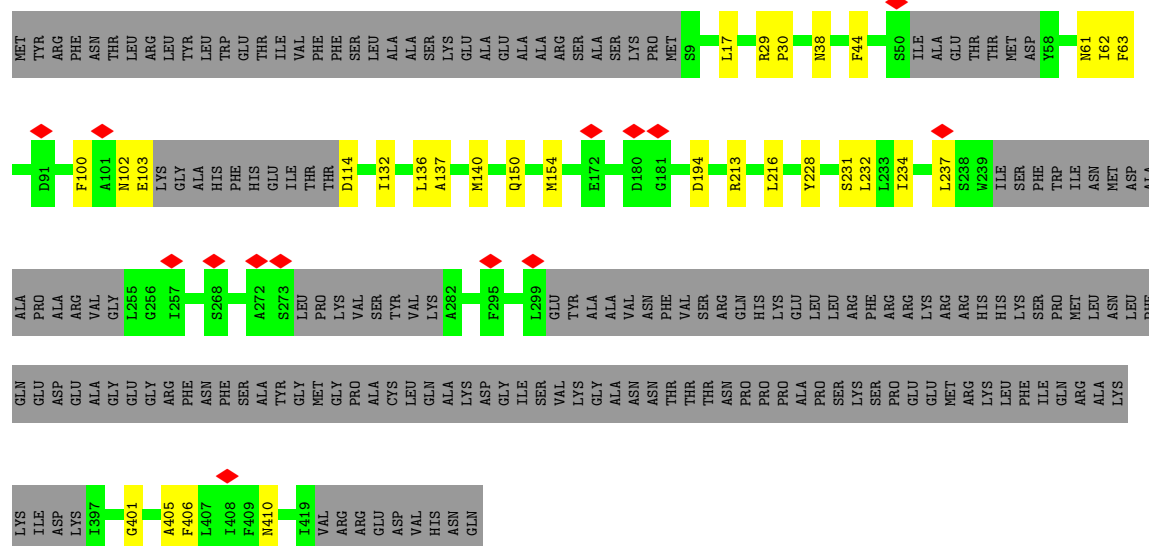


• Molecule 3: Glycine receptor alpha 1

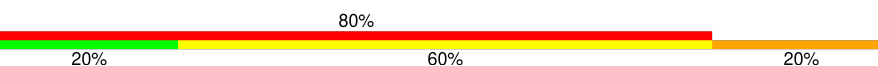


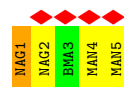


Chain C: 




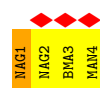
- Molecule 4: alpha-D-mannopyranose-(1-3)-[alpha-D-mannopyranose-(1-6)]beta-D-mannopyranose-(1-4)-2-acetamido-2-deoxy-beta-D-glucopyranose-(1-4)-2-acetamido-2-deoxy-beta-D-glucopyranose

Chain N: 




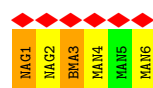
- Molecule 5: alpha-D-mannopyranose-(1-3)-beta-D-mannopyranose-(1-4)-2-acetamido-2-deoxy-beta-D-glucopyranose-(1-4)-2-acetamido-2-deoxy-beta-D-glucopyranose

Chain O: 



- Molecule 6: alpha-D-mannopyranose-(1-2)-alpha-D-mannopyranose-(1-6)-alpha-D-mannopyranose-(1-6)-beta-D-mannopyranose-(1-4)-2-acetamido-2-deoxy-beta-D-glucopyranose-(1-4)-2-acetamido-2-deoxy-beta-D-glucopyranose

Chain P: 



## 4 Experimental information

Property	Value	Source
EM reconstruction method	SINGLE PARTICLE	Depositor
Imposed symmetry	POINT, C1	Depositor
Number of particles used	129772	Depositor
Resolution determination method	FSC 0.143 CUT-OFF	Depositor
CTF correction method	PHASE FLIPPING AND AMPLITUDE CORRECTION	Depositor
Microscope	FEI TITAN KRIOS	Depositor
Voltage (kV)	300	Depositor
Electron dose ( $e^-/\text{\AA}^2$ )	28.2	Depositor
Minimum defocus (nm)	Not provided	
Maximum defocus (nm)	Not provided	
Magnification	Not provided	
Image detector	GATAN K3 BIOQUANTUM (6k x 4k)	Depositor
Maximum map value	0.500	Depositor
Minimum map value	-0.172	Depositor
Average map value	0.003	Depositor
Map value standard deviation	0.022	Depositor
Recommended contour level	0.129	Depositor
Map size (Å)	330.4, 330.4, 330.4	wwPDB
Map dimensions	400, 400, 400	wwPDB
Map angles (°)	90.0, 90.0, 90.0	wwPDB
Pixel spacing (Å)	0.826, 0.826, 0.826	Depositor

## 5 Model quality

### 5.1 Standard geometry

Bond lengths and bond angles in the following residue types are not validated in this section: MAN, NAG, BMA

The Z score for a bond length (or angle) is the number of standard deviations the observed value is removed from the expected value. A bond length (or angle) with  $|Z| > 5$  is considered an outlier worth inspection. RMSZ is the root-mean-square of all Z scores of the bond lengths (or angles).

Mol	Chain	Bond lengths		Bond angles	
		RMSZ	# Z  >5	RMSZ	# Z  >5
1	I	0.27	0/795	0.58	1/1080 (0.1%)
1	J	0.27	0/781	0.55	0/1062
1	K	0.29	0/801	0.62	0/1087
1	M	0.25	0/795	0.60	0/1080
2	F	0.25	0/900	0.50	0/1220
2	G	0.25	0/903	0.52	0/1223
2	H	0.26	0/897	0.53	0/1216
2	L	0.25	0/906	0.51	0/1227
3	A	0.27	0/2518	0.60	0/3423
3	B	0.26	0/2351	0.58	0/3198
3	C	0.27	0/2177	0.61	2/2964 (0.1%)
3	D	0.32	0/1324	0.62	1/1799 (0.1%)
All	All	0.27	0/15148	0.58	4/20579 (0.0%)

There are no bond length outliers.

All (4) bond angle outliers are listed below:

Mol	Chain	Res	Type	Atoms	Z	Observed(°)	Ideal(°)
3	C	17	LEU	CA-CB-CG	5.39	127.71	115.30
1	I	85	LEU	CA-CB-CG	5.21	127.30	115.30
3	D	156	LEU	CA-CB-CG	5.11	127.05	115.30
3	C	237	LEU	CA-CB-CG	5.03	126.86	115.30

There are no chirality outliers.

There are no planarity outliers.

## 5.2 Too-close contacts ⓘ

In the following table, the Non-H and H(model) columns list the number of non-hydrogen atoms and hydrogen atoms in the chain respectively. The H(added) column lists the number of hydrogen atoms added and optimized by MolProbity. The Clashes column lists the number of clashes within the asymmetric unit, whereas Symm-Clashes lists symmetry-related clashes.

Mol	Chain	Non-H	H(model)	H(added)	Clashes	Symm-Clashes
1	I	777	0	749	6	0
1	J	763	0	729	11	0
1	K	782	0	756	7	0
1	M	777	0	749	10	0
2	F	878	0	835	4	0
2	G	881	0	842	7	0
2	H	875	0	831	7	0
2	L	884	0	846	5	0
3	A	2456	0	2391	30	0
3	B	2292	0	2195	35	0
3	C	2125	0	2011	15	0
3	D	1299	0	1206	21	0
4	N	61	0	52	1	0
5	O	50	0	43	3	0
6	P	72	0	61	2	0
7	D	44	0	38	0	0
8	D	11	0	8	0	0
9	D	28	0	24	3	0
All	All	15055	0	14366	149	0

The all-atom clashscore is defined as the number of clashes found per 1000 atoms (including hydrogen atoms). The all-atom clashscore for this structure is 5.

The worst 5 of 149 close contacts within the same asymmetric unit are listed below, sorted by their clash magnitude.

Atom-1	Atom-2	Interatomic distance (Å)	Clash overlap (Å)
3:B:38:ASN:OD1	5:O:1:NAG:H83	1.38	1.19
3:D:38:ASN:HD21	9:D:505:NAG:C1	1.81	0.93
3:D:38:ASN:OD1	9:D:505:NAG:C1	2.19	0.90
3:D:38:ASN:CG	9:D:505:NAG:C1	2.50	0.80
3:B:38:ASN:OD1	5:O:1:NAG:C8	2.30	0.70

There are no symmetry-related clashes.

## 5.3 Torsion angles

### 5.3.1 Protein backbone

In the following table, the Percentiles column shows the percent Ramachandran outliers of the chain as a percentile score with respect to all PDB entries followed by that with respect to all EM entries.

The Analysed column shows the number of residues for which the backbone conformation was analysed, and the total number of residues.

Mol	Chain	Analysed	Favoured	Allowed	Outliers	Percentiles	
1	I	101/107 (94%)	94 (93%)	7 (7%)	0	100	100
1	J	99/107 (92%)	92 (93%)	7 (7%)	0	100	100
1	K	100/107 (94%)	86 (86%)	14 (14%)	0	100	100
1	M	101/107 (94%)	91 (90%)	10 (10%)	0	100	100
2	F	113/118 (96%)	110 (97%)	3 (3%)	0	100	100
2	G	113/118 (96%)	107 (95%)	6 (5%)	0	100	100
2	H	113/118 (96%)	109 (96%)	4 (4%)	0	100	100
2	L	113/118 (96%)	107 (95%)	6 (5%)	0	100	100
3	A	304/456 (67%)	283 (93%)	21 (7%)	0	100	100
3	B	286/456 (63%)	265 (93%)	21 (7%)	0	100	100
3	C	262/456 (58%)	249 (95%)	13 (5%)	0	100	100
3	D	160/456 (35%)	140 (88%)	20 (12%)	0	100	100
All	All	1865/2724 (68%)	1733 (93%)	132 (7%)	0	100	100

There are no Ramachandran outliers to report.

### 5.3.2 Protein sidechains

In the following table, the Percentiles column shows the percent sidechain outliers of the chain as a percentile score with respect to all PDB entries followed by that with respect to all EM entries.

The Analysed column shows the number of residues for which the sidechain conformation was analysed, and the total number of residues.

Mol	Chain	Analysed	Rotameric	Outliers	Percentiles	
1	I	86/92 (94%)	86 (100%)	0	100	100
1	J	84/92 (91%)	83 (99%)	1 (1%)	67	79

*Continued on next page...*

*Continued from previous page...*

Mol	Chain	Analysed	Rotameric	Outliers	Percentiles	
1	K	87/92 (95%)	87 (100%)	0	100	100
1	M	86/92 (94%)	86 (100%)	0	100	100
2	F	90/96 (94%)	90 (100%)	0	100	100
2	G	91/96 (95%)	91 (100%)	0	100	100
2	H	90/96 (94%)	89 (99%)	1 (1%)	70	80
2	L	91/96 (95%)	91 (100%)	0	100	100
3	A	262/403 (65%)	260 (99%)	2 (1%)	79	84
3	B	234/403 (58%)	233 (100%)	1 (0%)	89	91
3	C	221/403 (55%)	220 (100%)	1 (0%)	86	90
3	D	133/403 (33%)	133 (100%)	0	100	100
All	All	1555/2364 (66%)	1549 (100%)	6 (0%)	88	91

5 of 6 residues with a non-rotameric sidechain are listed below:

Mol	Chain	Res	Type
3	A	65	ARG
3	B	116	LYS
3	C	61	ASN
2	H	101	ARG
1	J	61	ARG

Sometimes sidechains can be flipped to improve hydrogen bonding and reduce clashes. 5 of 13 such sidechains are listed below:

Mol	Chain	Res	Type
3	A	215	HIS
3	A	266	GLN
3	C	203	ASN
3	B	150	GLN
3	B	164	ASN

### 5.3.3 RNA ⓘ

There are no RNA molecules in this entry.



## 5.4 Non-standard residues in protein, DNA, RNA chains ⓘ

There are no non-standard protein/DNA/RNA residues in this entry.

## 5.5 Carbohydrates ⓘ

15 monosaccharides are modelled in this entry.

In the following table, the Counts columns list the number of bonds (or angles) for which Mogul statistics could be retrieved, the number of bonds (or angles) that are observed in the model and the number of bonds (or angles) that are defined in the Chemical Component Dictionary. The Link column lists molecule types, if any, to which the group is linked. The Z score for a bond length (or angle) is the number of standard deviations the observed value is removed from the expected value. A bond length (or angle) with  $|Z| > 2$  is considered an outlier worth inspection. RMSZ is the root-mean-square of all Z scores of the bond lengths (or angles).

Mol	Type	Chain	Res	Link	Bond lengths			Bond angles		
					Counts	RMSZ	# Z  > 2	Counts	RMSZ	# Z  > 2
4	NAG	N	1	3,4	14,14,15	0.97	1 (7%)	17,19,21	2.34	3 (17%)
4	NAG	N	2	4	14,14,15	0.29	0	17,19,21	1.06	1 (5%)
4	BMA	N	3	4	11,11,12	0.69	0	15,15,17	0.80	0
4	MAN	N	4	4	11,11,12	0.70	0	15,15,17	1.15	2 (13%)
4	MAN	N	5	4	11,11,12	0.81	0	15,15,17	1.10	2 (13%)
5	NAG	O	1	3,5	14,14,15	0.86	1 (7%)	17,19,21	1.13	2 (11%)
5	NAG	O	2	5	14,14,15	0.41	0	17,19,21	1.20	2 (11%)
5	BMA	O	3	5	11,11,12	0.65	0	15,15,17	1.05	1 (6%)
5	MAN	O	4	5	11,11,12	0.91	1 (9%)	15,15,17	1.42	2 (13%)
6	NAG	P	1	3,6	14,14,15	0.69	1 (7%)	17,19,21	0.64	1 (5%)
6	NAG	P	2	6	14,14,15	0.33	0	17,19,21	1.07	1 (5%)
6	BMA	P	3	6	11,11,12	0.85	1 (9%)	15,15,17	0.93	1 (6%)
6	MAN	P	4	6	11,11,12	0.69	0	15,15,17	1.20	2 (13%)
6	MAN	P	5	6	11,11,12	0.95	0	15,15,17	0.92	0
6	MAN	P	6	6	11,11,12	1.34	2 (18%)	15,15,17	1.44	2 (13%)

In the following table, the Chirals column lists the number of chiral outliers, the number of chiral centers analysed, the number of these observed in the model and the number defined in the Chemical Component Dictionary. Similar counts are reported in the Torsion and Rings columns. '-' means no outliers of that kind were identified.

Mol	Type	Chain	Res	Link	Chirals	Torsions	Rings
4	NAG	N	1	3,4	-	6/6/23/26	0/1/1/1

*Continued on next page...*

*Continued from previous page...*

Mol	Type	Chain	Res	Link	Chirals	Torsions	Rings
4	NAG	N	2	4	-	2/6/23/26	0/1/1/1
4	BMA	N	3	4	-	1/2/19/22	0/1/1/1
4	MAN	N	4	4	-	0/2/19/22	0/1/1/1
4	MAN	N	5	4	-	0/2/19/22	0/1/1/1
5	NAG	O	1	3,5	-	4/6/23/26	0/1/1/1
5	NAG	O	2	5	-	4/6/23/26	0/1/1/1
5	BMA	O	3	5	-	0/2/19/22	0/1/1/1
5	MAN	O	4	5	-	0/2/19/22	0/1/1/1
6	NAG	P	1	3,6	-	2/6/23/26	0/1/1/1
6	NAG	P	2	6	-	2/6/23/26	0/1/1/1
6	BMA	P	3	6	-	1/2/19/22	0/1/1/1
6	MAN	P	4	6	-	2/2/19/22	0/1/1/1
6	MAN	P	5	6	-	2/2/19/22	0/1/1/1
6	MAN	P	6	6	-	0/2/19/22	1/1/1/1

The worst 5 of 7 bond length outliers are listed below:

Mol	Chain	Res	Type	Atoms	Z	Observed(Å)	Ideal(Å)
4	N	1	NAG	C1-C2	3.07	1.56	1.52
6	P	6	MAN	O5-C5	2.89	1.49	1.43
5	O	1	NAG	C1-C2	2.87	1.56	1.52
5	O	4	MAN	C1-C2	2.45	1.58	1.52
6	P	1	NAG	O5-C1	2.25	1.47	1.43

The worst 5 of 22 bond angle outliers are listed below:

Mol	Chain	Res	Type	Atoms	Z	Observed(°)	Ideal(°)
4	N	1	NAG	C2-N2-C7	8.19	133.88	122.90
6	P	6	MAN	C1-O5-C5	4.43	118.13	112.19
5	O	4	MAN	C1-O5-C5	4.01	117.56	112.19
4	N	1	NAG	C1-C2-N2	3.95	116.66	110.43
6	P	4	MAN	C1-O5-C5	3.76	117.22	112.19

There are no chirality outliers.

5 of 26 torsion outliers are listed below:

Mol	Chain	Res	Type	Atoms
6	P	4	MAN	O5-C5-C6-O6
6	P	5	MAN	O5-C5-C6-O6
5	O	2	NAG	O5-C5-C6-O6

*Continued on next page...*

*Continued from previous page...*

Mol	Chain	Res	Type	Atoms
6	P	5	MAN	C4-C5-C6-O6
5	O	1	NAG	C4-C5-C6-O6

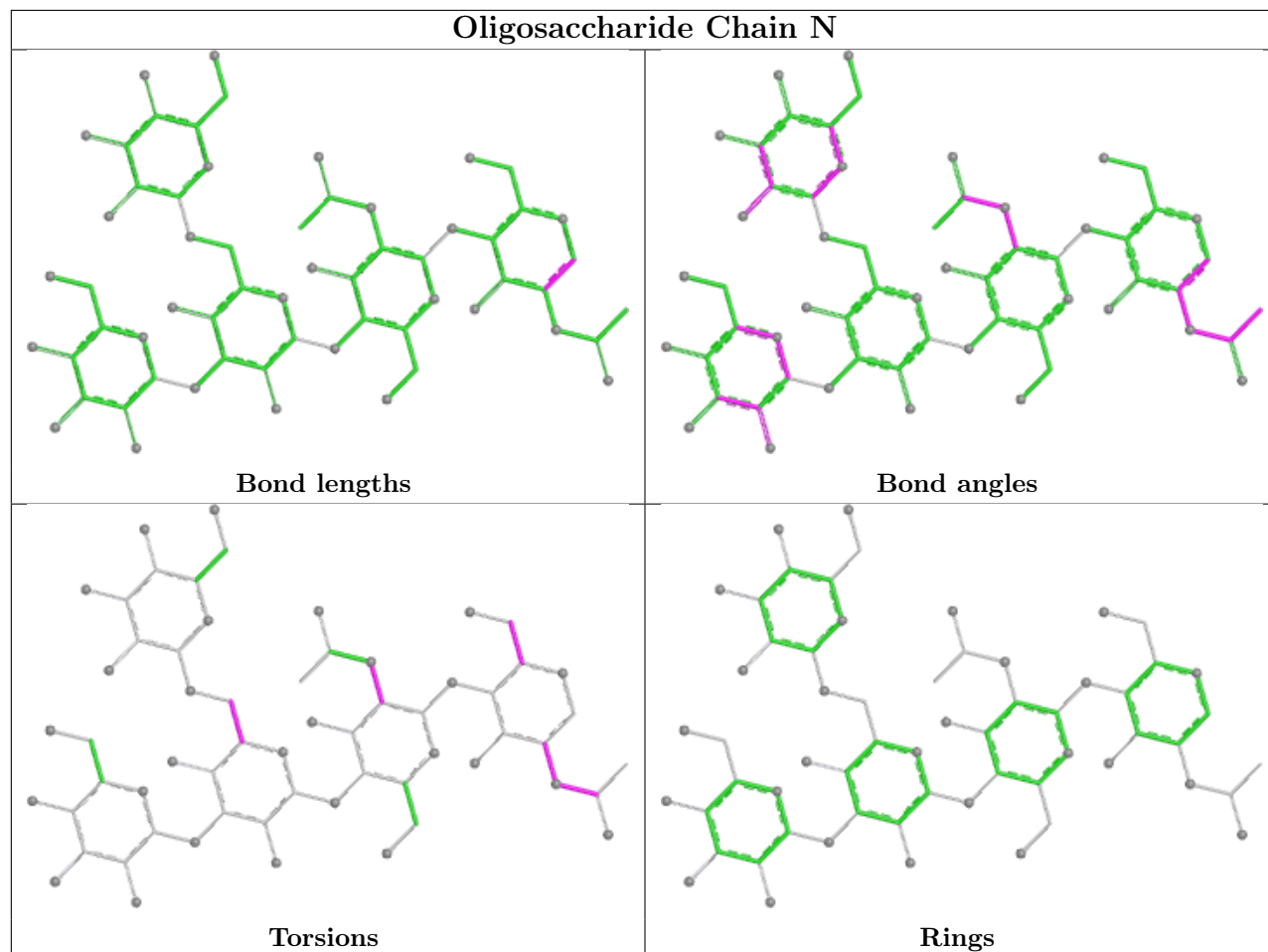
All (1) ring outliers are listed below:

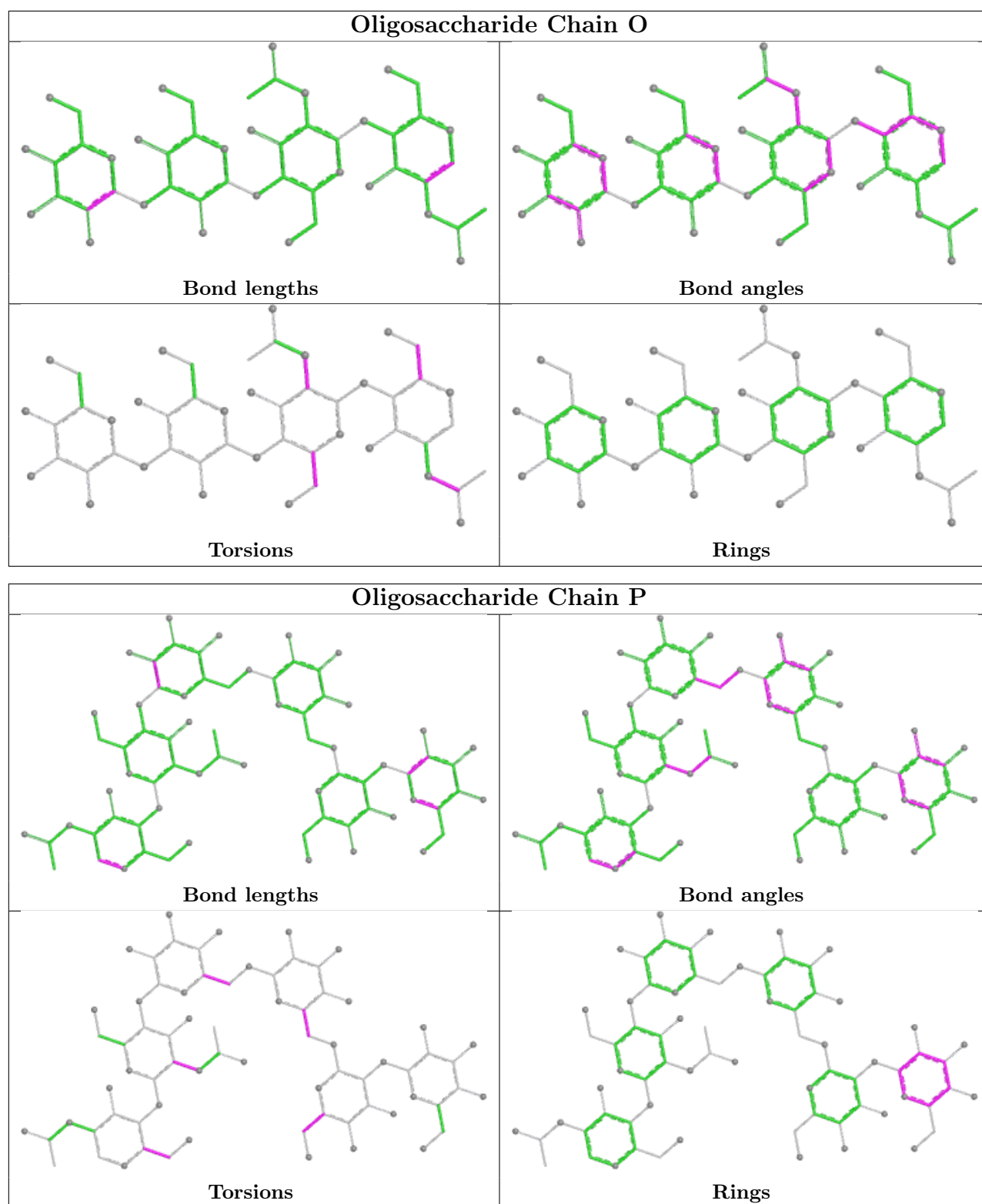
Mol	Chain	Res	Type	Atoms
6	P	6	MAN	C1-C2-C3-C4-C5-O5

4 monomers are involved in 6 short contacts:

Mol	Chain	Res	Type	Clashes	Symm-Clashes
4	N	1	NAG	1	0
6	P	3	BMA	1	0
6	P	1	NAG	1	0
5	O	1	NAG	3	0

The following is a two-dimensional graphical depiction of Mogul quality analysis of bond lengths, bond angles, torsion angles, and ring geometry for oligosaccharide.





## 5.6 Ligand geometry [i](#)

7 ligands are modelled in this entry.

In the following table, the Counts columns list the number of bonds (or angles) for which Mogul

statistics could be retrieved, the number of bonds (or angles) that are observed in the model and the number of bonds (or angles) that are defined in the Chemical Component Dictionary. The Link column lists molecule types, if any, to which the group is linked. The Z score for a bond length (or angle) is the number of standard deviations the observed value is removed from the expected value. A bond length (or angle) with  $|Z| > 2$  is considered an outlier worth inspection. RMSZ is the root-mean-square of all Z scores of the bond lengths (or angles).

Mol	Type	Chain	Res	Link	Bond lengths			Bond angles		
					Counts	RMSZ	# $ Z  > 2$	Counts	RMSZ	# $ Z  > 2$
7	MAN	D	502	7	11,11,12	1.16	1 (9%)	15,15,17	1.34	1 (6%)
9	NAG	D	505	3,9	14,14,15	0.39	0	17,19,21	0.64	0
7	MAN	D	504	7	11,11,12	0.78	0	15,15,17	1.10	2 (13%)
7	MAN	D	507	7,8	11,11,12	1.38	2 (18%)	15,15,17	1.27	1 (6%)
7	MAN	D	501	7,8	11,11,12	1.12	1 (9%)	15,15,17	1.30	2 (13%)
9	NAG	D	506	8,9	14,14,15	0.27	0	17,19,21	0.76	0
8	BMA	D	503	7,9	11,11,12	1.29	1 (9%)	15,15,17	1.04	0

In the following table, the Chirals column lists the number of chiral outliers, the number of chiral centers analysed, the number of these observed in the model and the number defined in the Chemical Component Dictionary. Similar counts are reported in the Torsion and Rings columns. '-' means no outliers of that kind were identified.

Mol	Type	Chain	Res	Link	Chirals	Torsions	Rings
7	MAN	D	502	7	-	2/2/19/22	1/1/1/1
9	NAG	D	505	3,9	-	3/6/23/26	0/1/1/1
7	MAN	D	504	7	-	0/2/19/22	0/1/1/1
7	MAN	D	507	7,8	-	1/2/19/22	1/1/1/1
7	MAN	D	501	7,8	-	0/2/19/22	0/1/1/1
9	NAG	D	506	8,9	-	4/6/23/26	0/1/1/1
8	BMA	D	503	7,9	-	2/2/19/22	0/1/1/1

All (5) bond length outliers are listed below:

Mol	Chain	Res	Type	Atoms	Z	Observed(Å)	Ideal(Å)
7	D	501	MAN	C1-C2	3.10	1.59	1.52
7	D	507	MAN	O5-C5	3.02	1.49	1.43
7	D	502	MAN	O5-C5	2.48	1.48	1.43
8	D	503	BMA	C1-C2	2.47	1.58	1.52
7	D	507	MAN	C1-C2	2.38	1.57	1.52

The worst 5 of 6 bond angle outliers are listed below:

Mol	Chain	Res	Type	Atoms	Z	Observed(°)	Ideal(°)
7	D	502	MAN	C1-O5-C5	4.29	117.94	112.19
7	D	507	MAN	C1-O5-C5	3.66	117.09	112.19
7	D	501	MAN	C1-O5-C5	3.43	116.78	112.19
7	D	504	MAN	C1-O5-C5	2.70	115.81	112.19
7	D	504	MAN	O2-C2-C3	-2.31	105.36	110.15

There are no chirality outliers.

5 of 12 torsion outliers are listed below:

Mol	Chain	Res	Type	Atoms
9	D	506	NAG	O5-C5-C6-O6
7	D	502	MAN	O5-C5-C6-O6
9	D	506	NAG	C4-C5-C6-O6
7	D	502	MAN	C4-C5-C6-O6
9	D	505	NAG	C8-C7-N2-C2

All (2) ring outliers are listed below:

Mol	Chain	Res	Type	Atoms
7	D	507	MAN	C1-C2-C3-C4-C5-O5
7	D	502	MAN	C1-C2-C3-C4-C5-O5

1 monomer is involved in 3 short contacts:

Mol	Chain	Res	Type	Clashes	Symm-Clashes
9	D	505	NAG	3	0

## 5.7 Other polymers [i](#)

There are no such residues in this entry.

## 5.8 Polymer linkage issues [i](#)

There are no chain breaks in this entry.

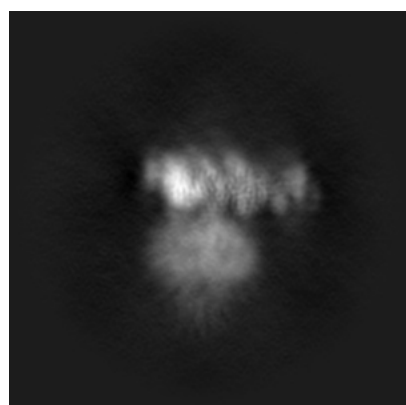
## 6 Map visualisation [i](#)

This section contains visualisations of the EMDB entry EMD-23911. These allow visual inspection of the internal detail of the map and identification of artifacts.

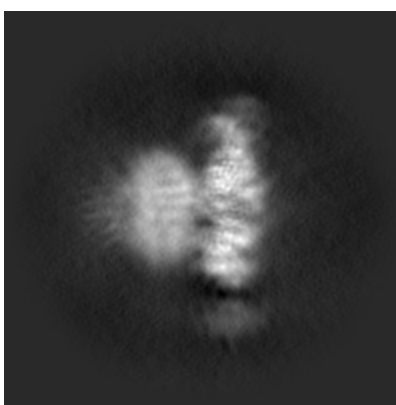
No raw map or half-maps were deposited for this entry and therefore no images, graphs, etc. pertaining to the raw map can be shown.

### 6.1 Orthogonal projections [i](#)

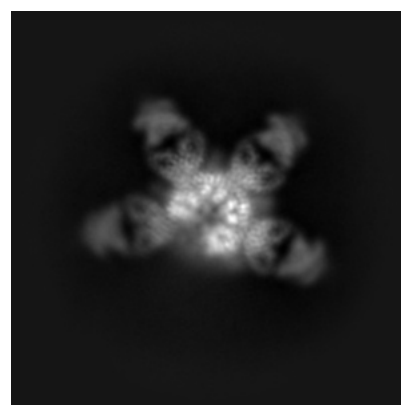
#### 6.1.1 Primary map



X



Y

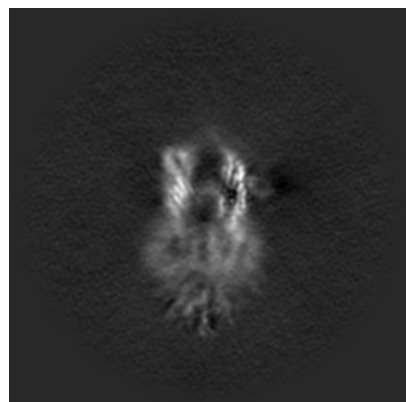


Z

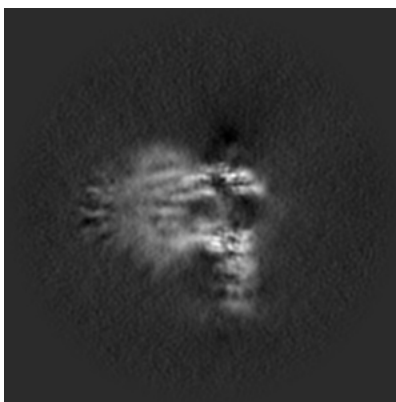
The images above show the map projected in three orthogonal directions.

### 6.2 Central slices [i](#)

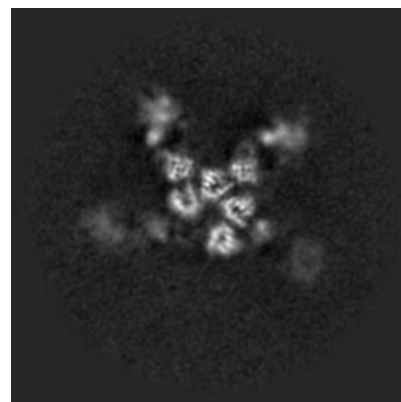
#### 6.2.1 Primary map



X Index: 200



Y Index: 200

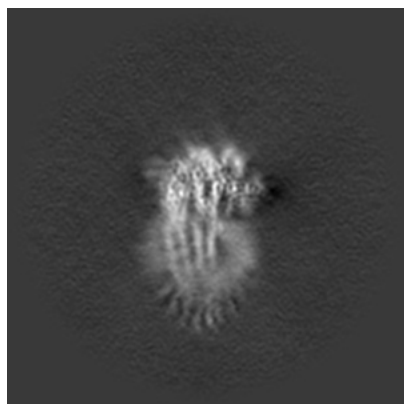


Z Index: 200

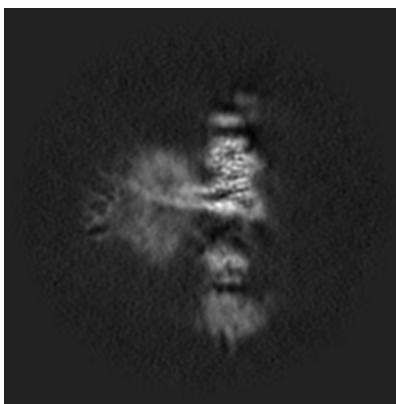
The images above show central slices of the map in three orthogonal directions.

## 6.3 Largest variance slices [i](#)

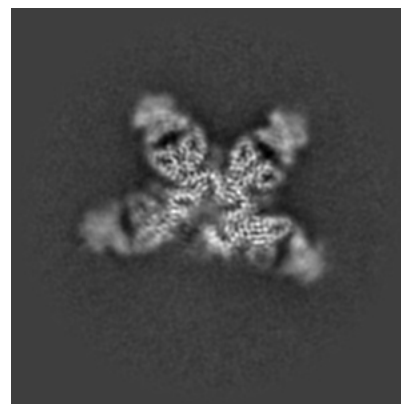
### 6.3.1 Primary map



X Index: 219



Y Index: 170

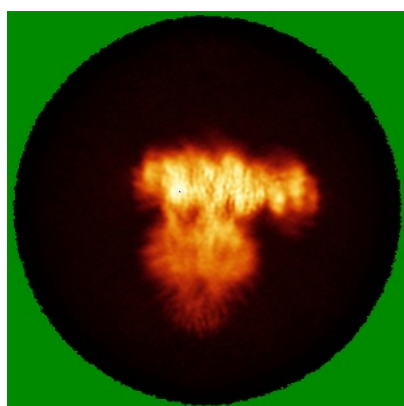


Z Index: 220

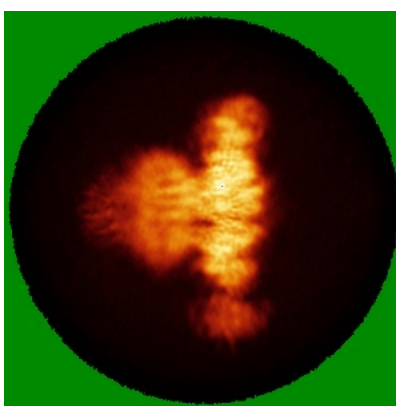
The images above show the largest variance slices of the map in three orthogonal directions.

## 6.4 Orthogonal standard-deviation projections (False-color) [i](#)

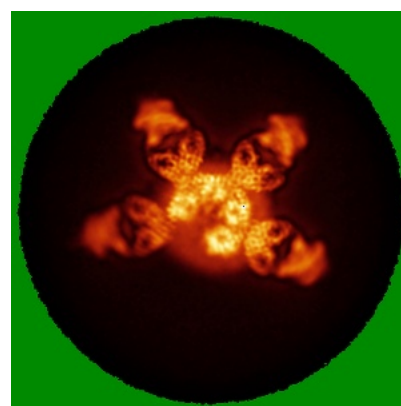
### 6.4.1 Primary map



X



Y



Z

The images above show the map standard deviation projections with false color in three orthogonal directions. Minimum values are shown in green, max in blue, and dark to light orange shades represent small to large values respectively.



## 6.5 Orthogonal surface views [i](#)

### 6.5.1 Primary map



The images above show the 3D surface view of the map at the recommended contour level 0.129. These images, in conjunction with the slice images, may facilitate assessment of whether an appropriate contour level has been provided.

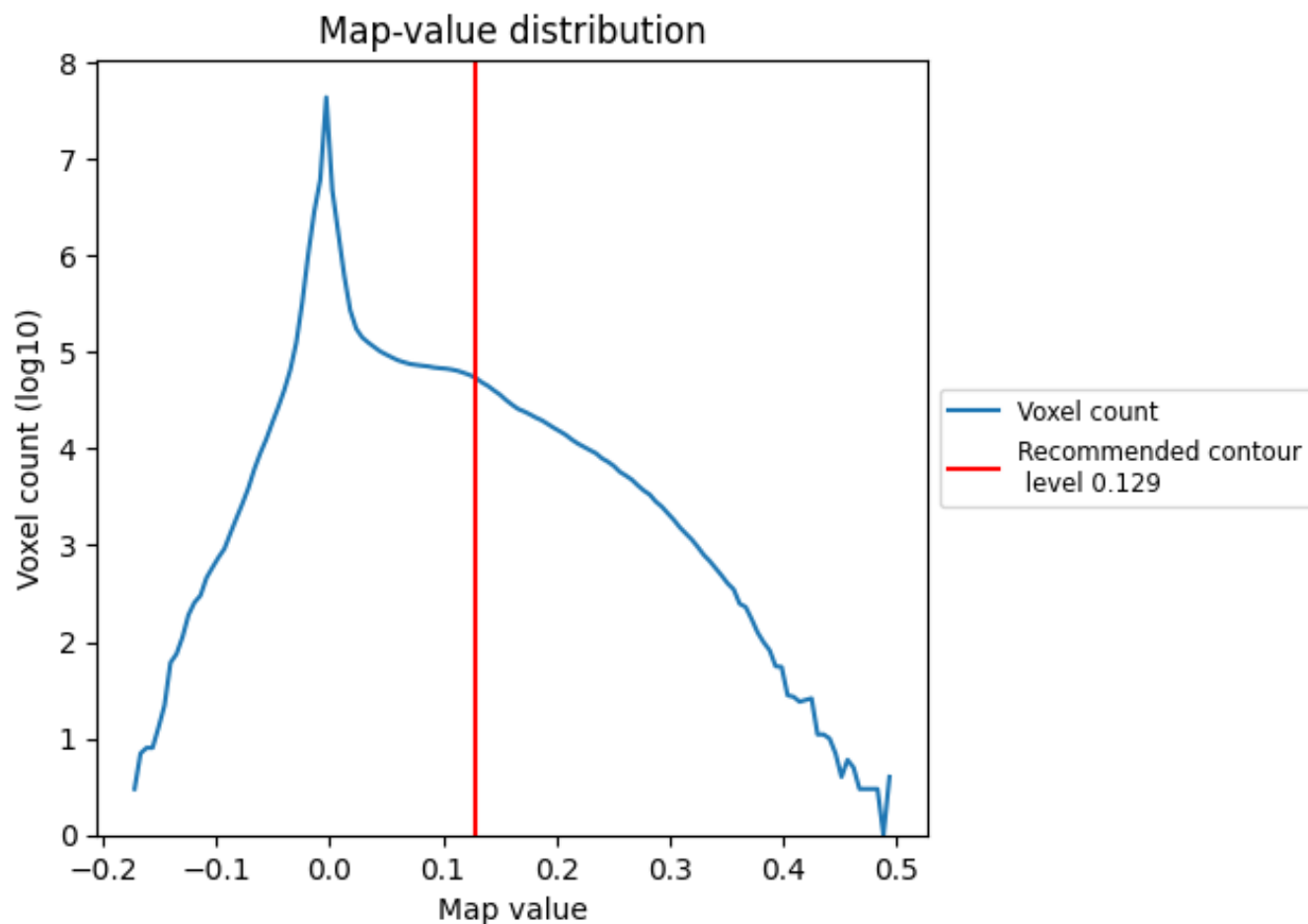
## 6.6 Mask visualisation [i](#)

This section was not generated. No masks/segmentation were deposited.

## 7 Map analysis [i](#)

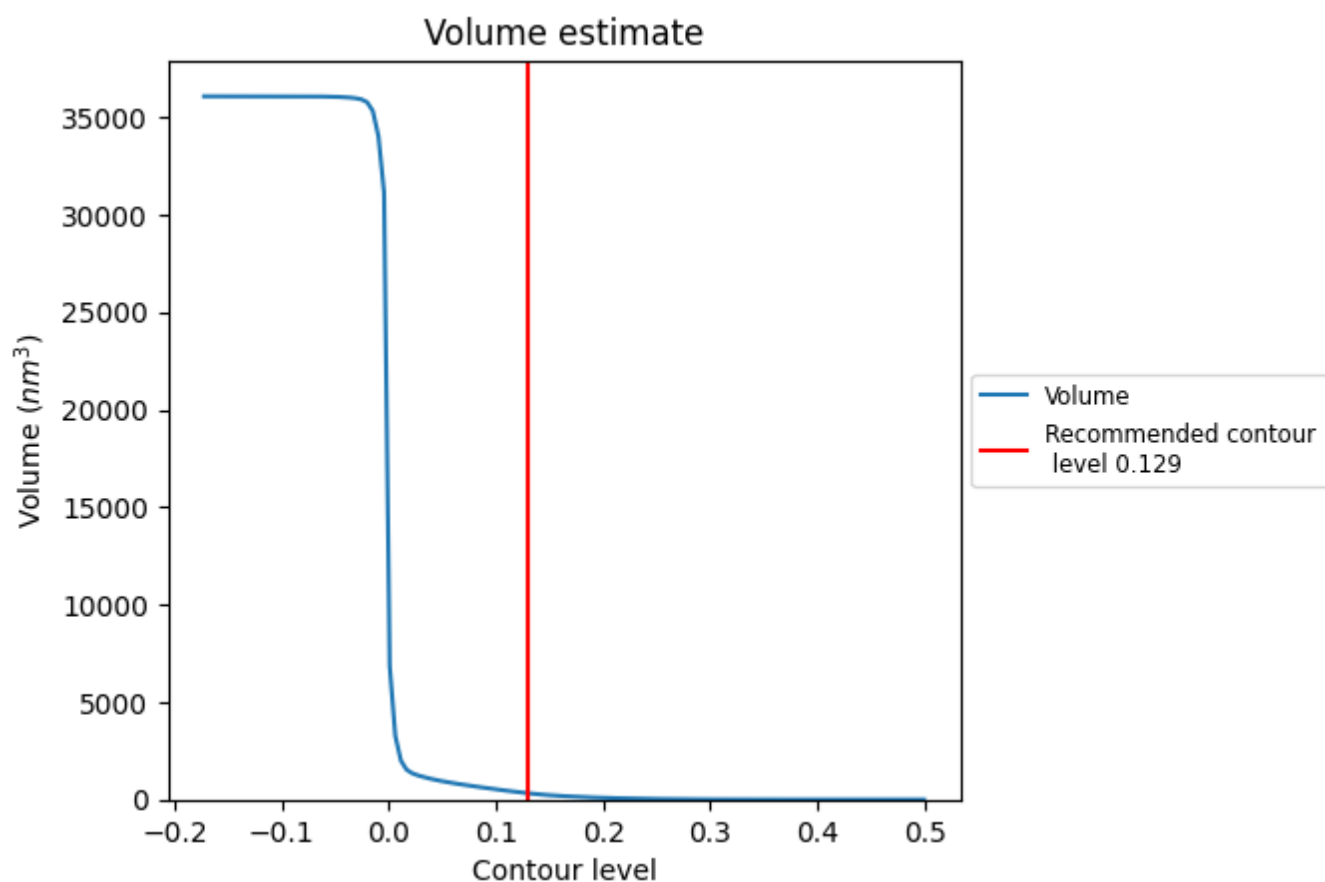
This section contains the results of statistical analysis of the map.

### 7.1 Map-value distribution [i](#)



The map-value distribution is plotted in 128 intervals along the x-axis. The y-axis is logarithmic. A spike in this graph at zero usually indicates that the volume has been masked.

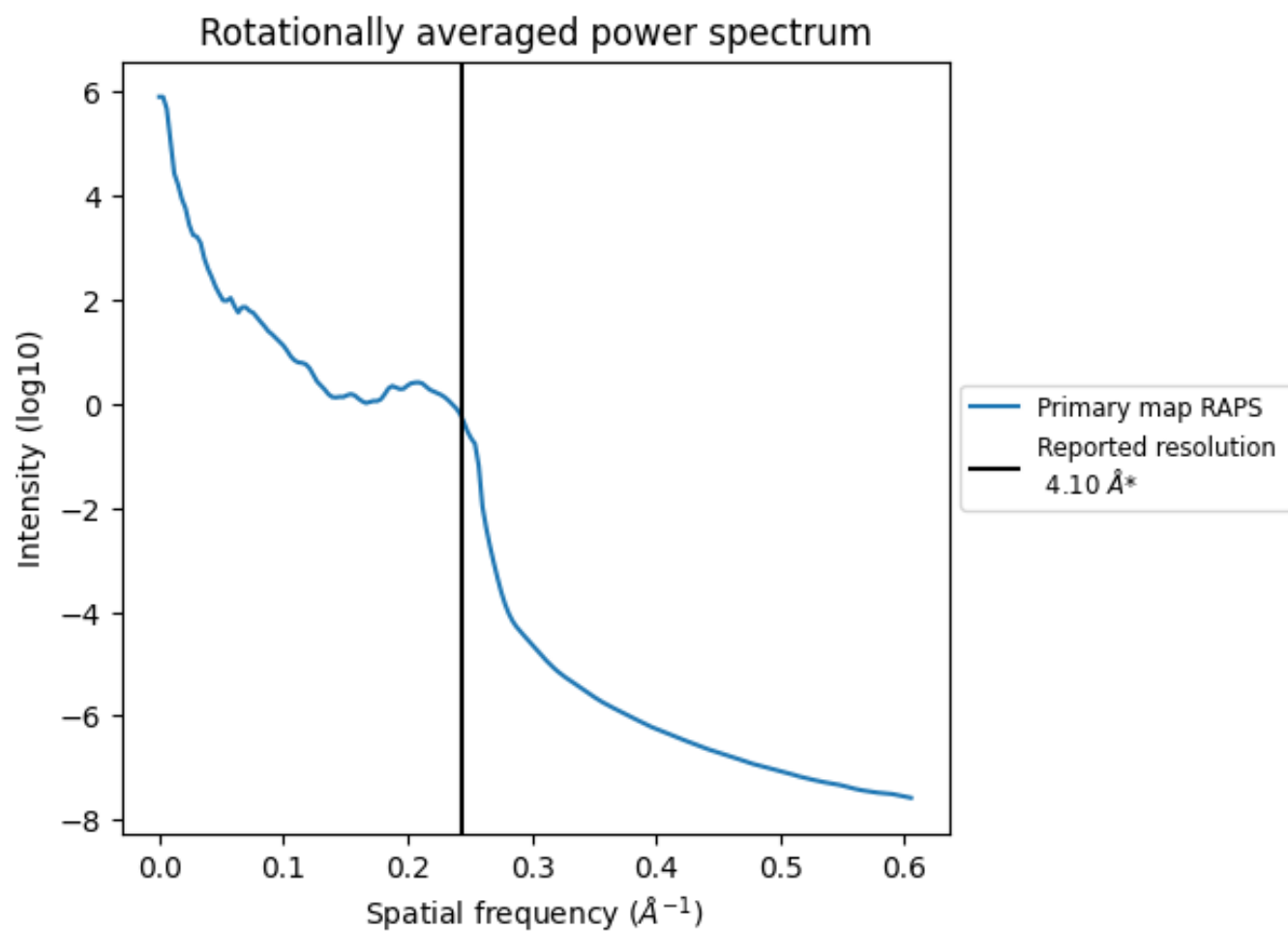
## 7.2 Volume estimate [i](#)



The volume at the recommended contour level is 330 nm<sup>3</sup>; this corresponds to an approximate mass of 298 kDa.

The volume estimate graph shows how the enclosed volume varies with the contour level. The recommended contour level is shown as a vertical line and the intersection between the line and the curve gives the volume of the enclosed surface at the given level.

### 7.3 Rotationally averaged power spectrum ⓘ



\*Reported resolution corresponds to spatial frequency of 0.244 Å<sup>-1</sup>

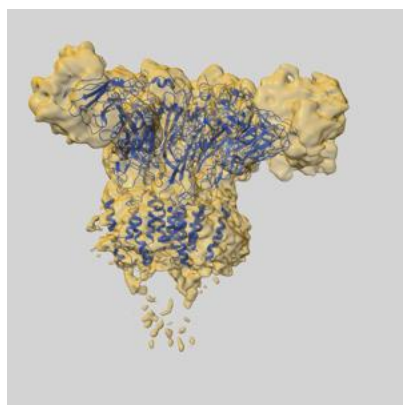
## 8 Fourier-Shell correlation

This section was not generated. No FSC curve or half-maps provided.

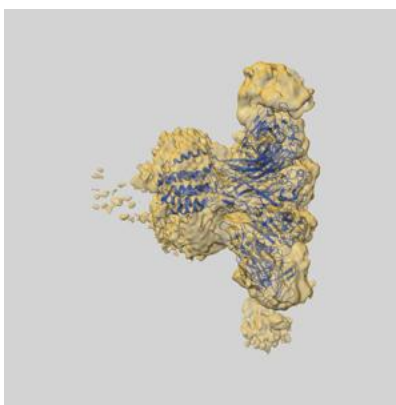
## 9 Map-model fit [i](#)

This section contains information regarding the fit between EMDB map EMD-23911 and PDB model 7MLV. Per-residue inclusion information can be found in section [3](#) on page [8](#).

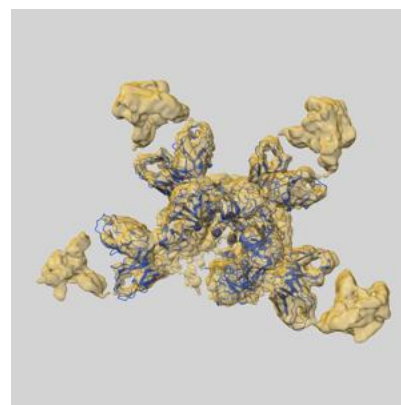
### 9.1 Map-model overlay [i](#)



X



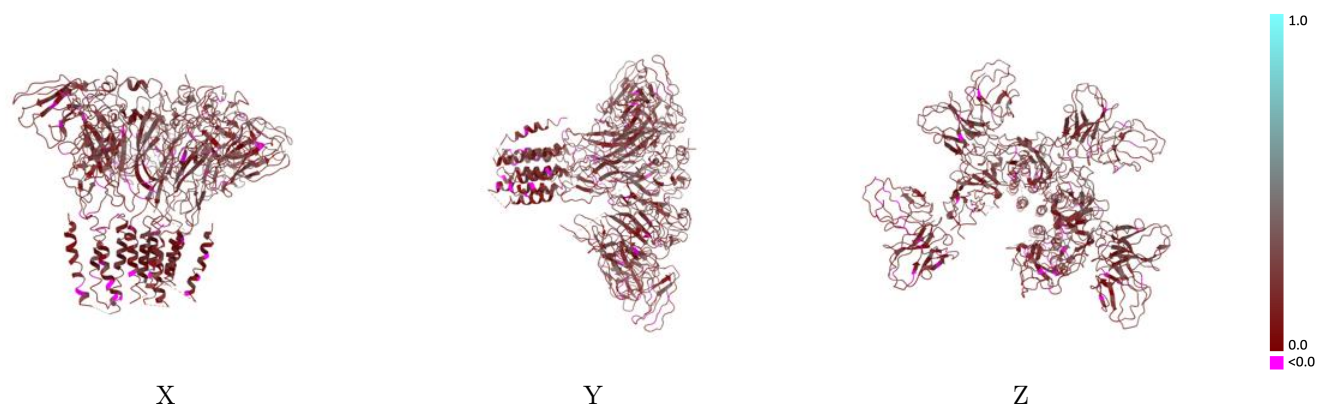
Y



Z

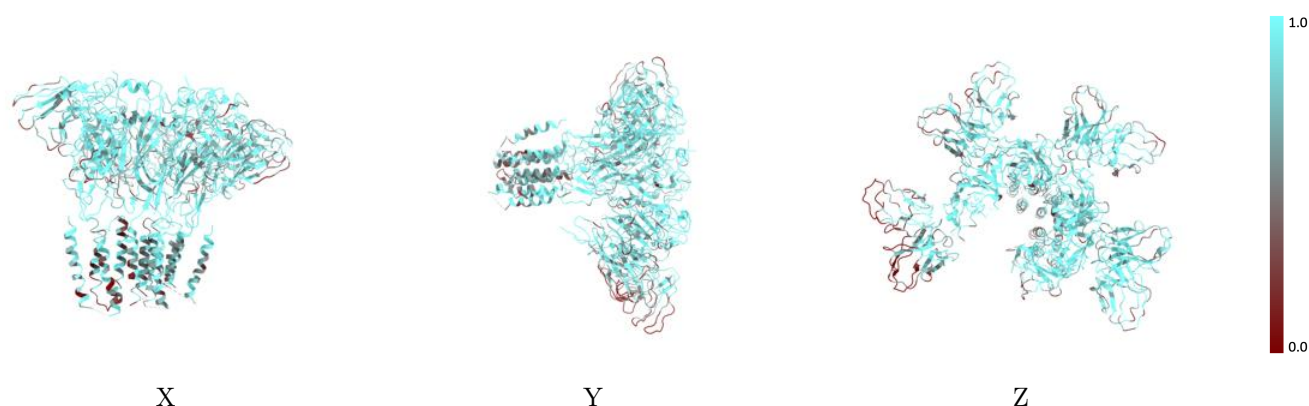
The images above show the 3D surface view of the map at the recommended contour level 0.129 at 50% transparency in yellow overlaid with a ribbon representation of the model coloured in blue. These images allow for the visual assessment of the quality of fit between the atomic model and the map.

## 9.2 Q-score mapped to coordinate model [i](#)



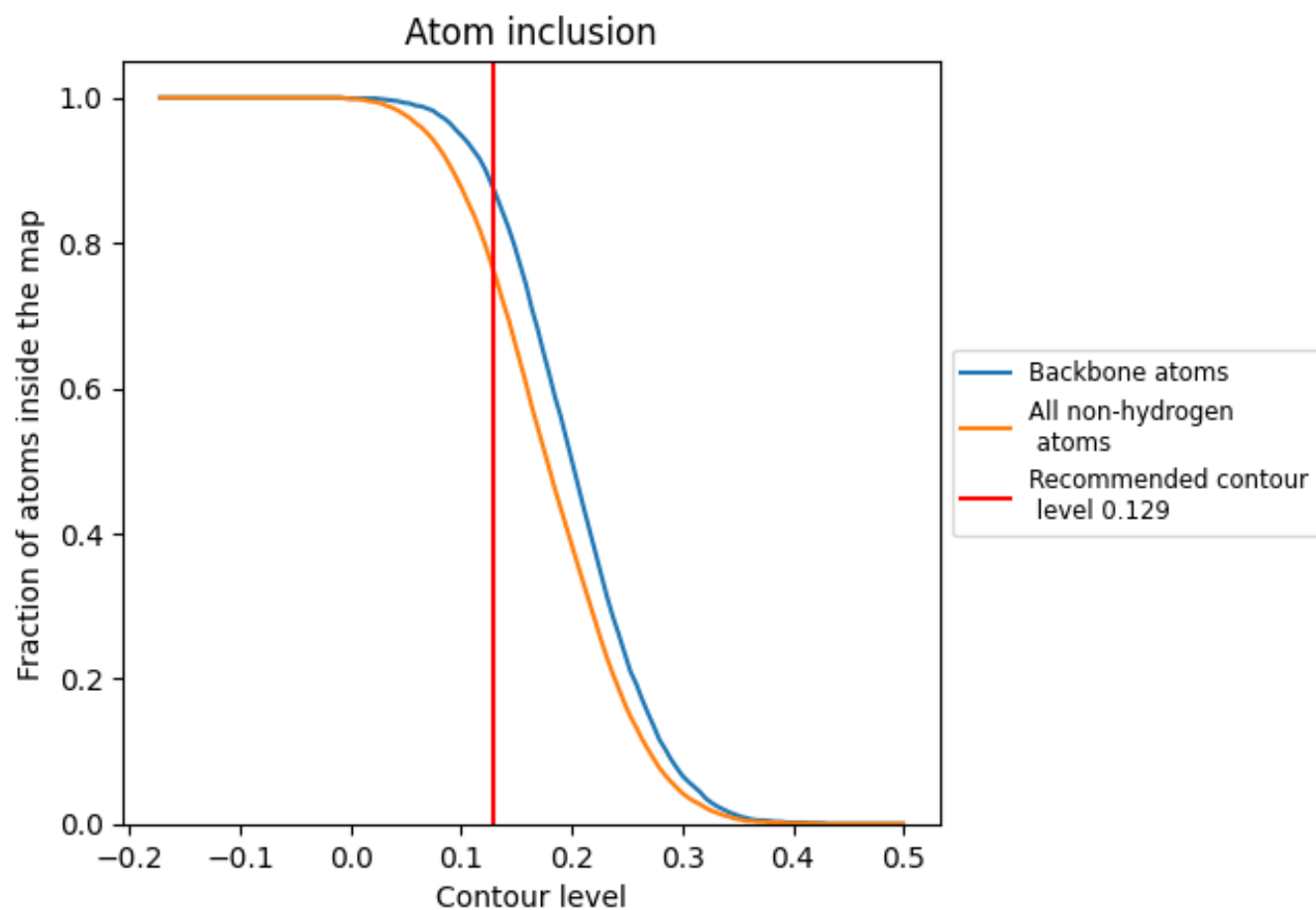
The images above show the model with each residue coloured according to its Q-score. This shows their resolvability in the map with higher Q-score values reflecting better resolvability. Please note: Q-score is calculating the resolvability of atoms, and thus high values are only expected at resolutions at which atoms can be resolved. Low Q-score values may therefore be expected for many entries.

## 9.3 Atom inclusion mapped to coordinate model [i](#)



The images above show the model with each residue coloured according to its atom inclusion. This shows to what extent they are inside the map at the recommended contour level (0.129).

## 9.4 Atom inclusion [i](#)



































At the recommended contour level, 87% of all backbone atoms, 76% of all non-hydrogen atoms, are inside the map.



## 9.5 Map-model fit summary

The table lists the average atom inclusion at the recommended contour level (0.129) and Q-score for the entire model and for each chain.

Chain	Atom inclusion	Q-score
All	 0.7620	 0.2070
A	 0.8070	 0.1810
B	 0.8240	 0.2070
C	 0.8240	 0.2110
D	 0.8350	 0.2250
F	 0.5420	 0.1670
G	 0.7460	 0.2170
H	 0.7150	 0.2240
I	 0.7470	 0.2330
J	 0.7950	 0.2360
K	 0.5140	 0.1680
L	 0.7870	 0.2250
M	 0.8140	 0.2000
N	 0.1970	 0.3310
O	 0.1400	 0.2700
P	 0.0280	 0.3180

