



wwPDB X-ray Structure Validation Summary Report ⓘ

Jun 11, 2024 – 03:18 PM EDT

PDB ID : 6MK0
Title : Integrin AlphaVBeta3 ectodomain bound to antagonist TDI-4161
Authors : van Agthoven, J.; Arnaout, M.A.
Deposited on : 2018-09-24
Resolution : 3.00 Å(reported)

This is a wwPDB X-ray Structure Validation Summary Report for a publicly released PDB entry.

We welcome your comments at validation@mail.wwpdb.org

A user guide is available at

<https://www.wwpdb.org/validation/2017/XrayValidationReportHelp>

with specific help available everywhere you see the ⓘ symbol.

The types of validation reports are described at

<http://www.wwpdb.org/validation/2017/FAQs#types>.

The following versions of software and data (see [references ⓘ](#)) were used in the production of this report:

MolProbity : 4.02b-467
Mogul : 1.8.5 (274361), CSD as541be (2020)
Xtriage (Phenix) : 1.13
EDS : 2.36.2
buster-report : 1.1.7 (2018)
Percentile statistics : 20191225.v01 (using entries in the PDB archive December 25th 2019)
Refmac : 5.8.0158
CCP4 : 7.0.044 (Gargrove)
Ideal geometry (proteins) : Engh & Huber (2001)
Ideal geometry (DNA, RNA) : Parkinson et al. (1996)
Validation Pipeline (wwPDB-VP) : 2.36.2

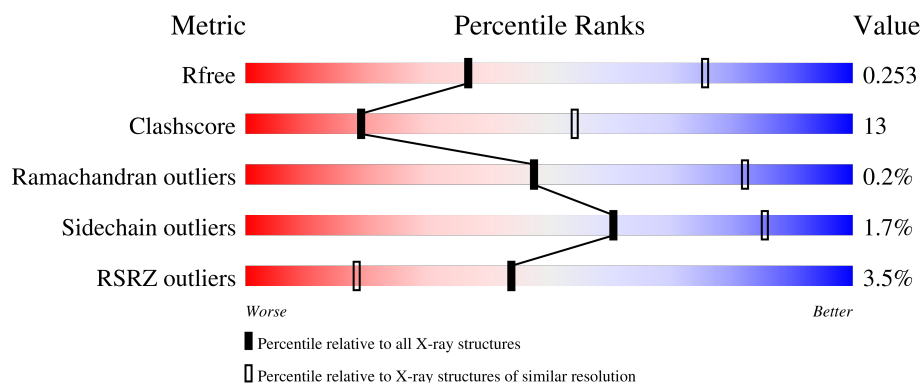
1 Overall quality at a glance

The following experimental techniques were used to determine the structure:

X-RAY DIFFRACTION

The reported resolution of this entry is 3.00 Å.

Percentile scores (ranging between 0-100) for global validation metrics of the entry are shown in the following graphic. The table shows the number of entries on which the scores are based.




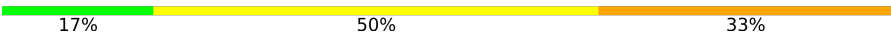

Metric	Whole archive (#Entries)	Similar resolution (#Entries, resolution range(Å))
R_{free}	130704	2092 (3.00-3.00)
Clashscore	141614	2416 (3.00-3.00)
Ramachandran outliers	138981	2333 (3.00-3.00)
Sidechain outliers	138945	2336 (3.00-3.00)
RSRZ outliers	127900	1990 (3.00-3.00)

The table below summarises the geometric issues observed across the polymeric chains and their fit to the electron density. The red, orange, yellow and green segments of the lower bar indicate the fraction of residues that contain outliers for ≥ 3 , 2, 1 and 0 types of geometric quality criteria respectively. A grey segment represents the fraction of residues that are not modelled. The numeric value for each fraction is indicated below the corresponding segment, with a dot representing fractions $\leq 5\%$. The upper red bar (where present) indicates the fraction of residues that have poor fit to the electron density. The numeric value is given above the bar.

Mol	Chain	Length	Quality of chain
1	A	954	<div> <div>73%</div> <div>23%</div> <div>.</div> </div>
2	B	687	<div> <div>7%</div> <div>69%</div> <div>30%</div> <div>.</div> </div>
3	C	2	<div> <div>100%</div> </div>
3	E	2	<div> <div>100%</div> </div>
3	F	2	<div> <div>50%</div> <div>50%</div> </div>

Continued on next page...

Continued from previous page...

Mol	Chain	Length	Quality of chain
3	G	2	
4	D	6	
5	H	3	

The following table lists non-polymeric compounds, carbohydrate monomers and non-standard residues in protein, DNA, RNA chains that are outliers for geometric or electron-density-fit criteria:

Mol	Type	Chain	Res	Chirality	Geometry	Clashes	Electron density
6	NAG	A	1013	-	-	-	X
6	NAG	B	701	-	-	-	X

2 Entry composition [i](#)

There are 9 unique types of molecules in this entry. The entry contains 12820 atoms, of which 0 are hydrogens and 0 are deuteriums.

In the tables below, the ZeroOcc column contains the number of atoms modelled with zero occupancy, the AltConf column contains the number of residues with at least one atom in alternate conformation and the Trace column contains the number of residues modelled with at most 2 atoms.

- Molecule 1 is a protein called Integrin alpha-V.

Mol	Chain	Residues	Atoms					ZeroOcc	AltConf	Trace
1	A	920	Total	C	N	O	S	0	0	0
			7163	4535	1216	1377	35			

- Molecule 2 is a protein called Integrin beta-3.

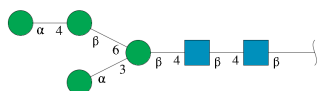
Mol	Chain	Residues	Atoms					ZeroOcc	AltConf	Trace
2	B	687	Total	C	N	O	S	0	0	0
			5275	3239	900	1066	70			

- Molecule 3 is an oligosaccharide called 2-acetamido-2-deoxy-beta-D-glucopyranose-(1-4)-2-acetamido-2-deoxy-beta-D-glucopyranose.



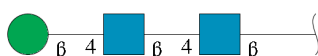
Mol	Chain	Residues	Atoms				ZeroOcc	AltConf	Trace
3	C	2	Total	C	N	O	0	0	0
			28	16	2	10			
3	E	2	Total	C	N	O	0	0	0
			28	16	2	10			
3	F	2	Total	C	N	O	0	0	0
			28	16	2	10			
3	G	2	Total	C	N	O	0	0	0
			28	16	2	10			

- Molecule 4 is an oligosaccharide called alpha-D-mannopyranose-(1-4)-beta-D-mannopyranose-(1-6)-[alpha-D-mannopyranose-(1-3)]beta-D-mannopyranose-(1-4)-2-acetamido-2-deoxy-beta-D-glucopyranose-(1-4)-2-acetamido-2-deoxy-beta-D-glucopyranose.



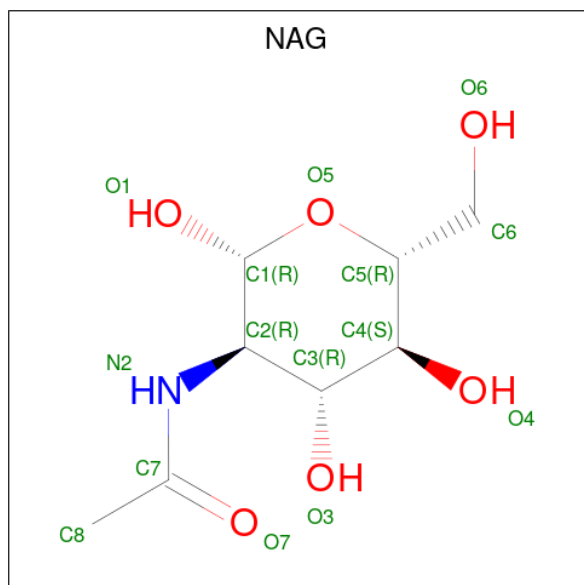
Mol	Chain	Residues	Atoms				ZeroOcc	AltConf	Trace
4	D	6	Total	C	N	O	0	0	0
			72	40	2	30			

- Molecule 5 is an oligosaccharide called beta-D-mannopyranose-(1-4)-2-acetamido-2-deoxy-beta-D-glucopyranose-(1-4)-2-acetamido-2-deoxy-beta-D-glucopyranose.



Mol	Chain	Residues	Atoms				ZeroOcc	AltConf	Trace
5	H	3	Total	C	N	O	0	0	0
			39	22	2	15			

- Molecule 6 is 2-acetamido-2-deoxy-beta-D-glucopyranose (three-letter code: NAG) (formula: C₈H₁₅NO₆).



Mol	Chain	Residues	Atoms				ZeroOcc	AltConf
6	A	1	Total	C	N	O	0	0
			14	8	1	5		
6	A	1	Total	C	N	O	0	0
			14	8	1	5		

Continued on next page...

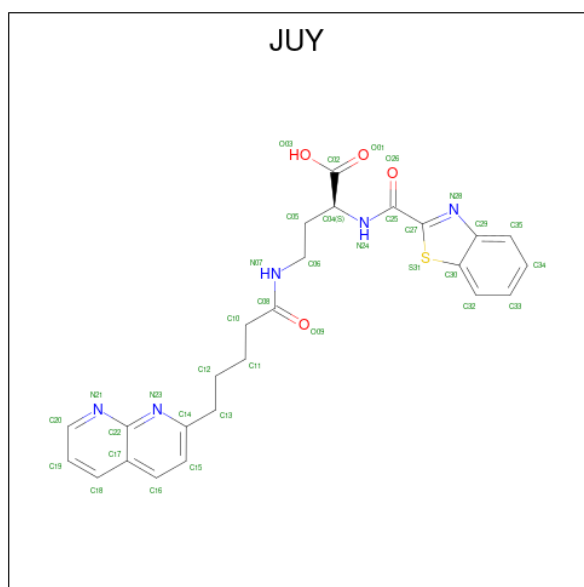
Continued from previous page...

Mol	Chain	Residues	Atoms				ZeroOcc	AltConf
6	A	1	Total	C	N	O	0	0
			14	8	1	5		
6	A	1	Total	C	N	O	0	0
			14	8	1	5		
6	A	1	Total	C	N	O	0	0
			14	8	1	5		
6	B	1	Total	C	N	O	0	0
			14	8	1	5		
6	B	1	Total	C	N	O	0	0
			14	8	1	5		
6	B	1	Total	C	N	O	0	0
			14	8	1	5		

- Molecule 7 is MANGANESE (II) ION (three-letter code: MN) (formula: Mn).

Mol	Chain	Residues	Atoms		ZeroOcc	AltConf
7	A	5	Total	Mn	0	0
			5	5		
7	B	3	Total	Mn	0	0
			3	3		

- Molecule 8 is (2S)-2-[(1,3-benzothiazole-2-carbonyl)amino]-4-{[5-(1,8-naphthyridin-2-yl)pentanoyl]amino}butanoic acid (three-letter code: JUY) (formula: C₂₅H₂₅N₅O₄S) (labeled as "Ligand of Interest" by depositor).

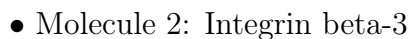


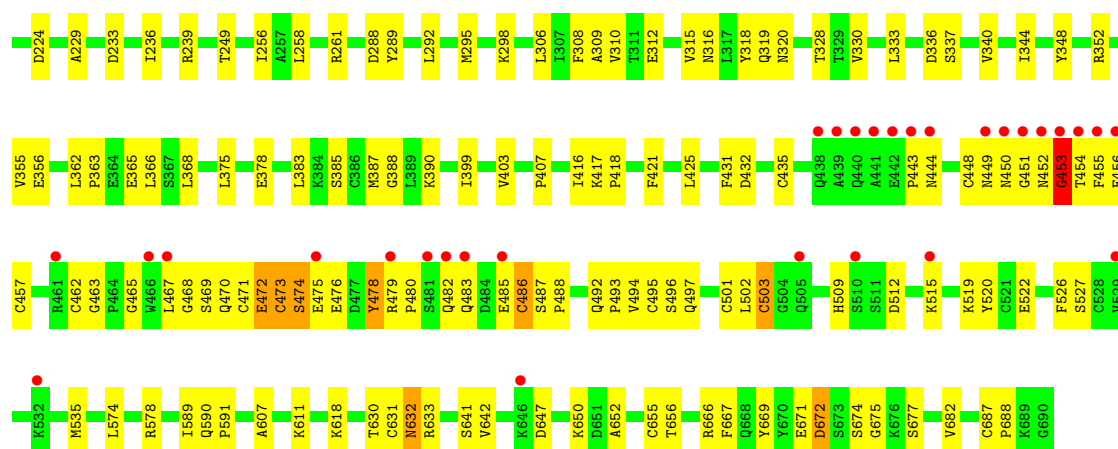
Mol	Chain	Residues	Atoms					ZeroOcc	AltConf
8	B	1	Total	C	N	O	S	0	0
			35	25	5	4	1		

- Molecule 9 is water.

Mol	Chain	Residues	Atoms		ZeroOcc	AltConf
9	B	4	Total	O	0	0
			4	4		

- Molecule 1: Integrin alpha-V





- Molecule 3: 2-acetamido-2-deoxy-beta-D-glucopyranose-(1-4)-2-acetamido-2-deoxy-beta-D-glucopyranose

Chain C: 100%

MAG1
MAG2

- Molecule 3: 2-acetamido-2-deoxy-beta-D-glucopyranose-(1-4)-2-acetamido-2-deoxy-beta-D-glucopyranose

Chain E: 100%

MAG1
MAG2

- Molecule 3: 2-acetamido-2-deoxy-beta-D-glucopyranose-(1-4)-2-acetamido-2-deoxy-beta-D-glucopyranose

Chain F: 50%

MAG1
MAG2

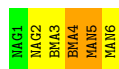
- Molecule 3: 2-acetamido-2-deoxy-beta-D-glucopyranose-(1-4)-2-acetamido-2-deoxy-beta-D-glucopyranose

Chain G: 50%

MAG1
MAG2

- Molecule 4: alpha-D-mannopyranose-(1-4)-beta-D-mannopyranose-(1-6)-[alpha-D-mannopyranose-(1-3)]beta-D-mannopyranose-(1-4)-2-acetamido-2-deoxy-beta-D-glucopyranose-(1-4)-2-acetamido-2-deoxy-beta-D-glucopyranose

Chain D: 17%



- Molecule 5: beta-D-mannopyranose-(1-4)-2-acetamido-2-deoxy-beta-D-glucopyranose-(1-4)-2-acetamido-2-deoxy-beta-D-glucopyranose



4 Data and refinement statistics

Property	Value	Source
Space group	P 32 2 1	Depositor
Cell constants a, b, c, α , β , γ	129.41Å 129.41Å 305.54Å 90.00° 90.00° 120.00°	Depositor
Resolution (Å)	49.09 – 3.00 49.37 – 3.00	Depositor EDS
% Data completeness (in resolution range)	94.0 (49.09-3.00) 94.0 (49.37-3.00)	Depositor EDS
R_{merge}	0.14	Depositor
R_{sym}	0.05	Depositor
$\langle I/\sigma(I) \rangle$ ¹	3.23 (at 3.01Å)	Xtriage
Refinement program	PHENIX 1.13_2998	Depositor
R, R_{free}	0.222 , 0.253 0.221 , 0.253	Depositor DCC
R_{free} test set	2858 reflections (5.07%)	wwPDB-VP
Wilson B-factor (Å ²)	49.4	Xtriage
Anisotropy	0.149	Xtriage
Bulk solvent k_{sol} (e/Å ³), B_{sol} (Å ²)	0.31 , 49.9	EDS
L-test for twinning ²	$\langle L \rangle = 0.49$, $\langle L^2 \rangle = 0.32$	Xtriage
Estimated twinning fraction	0.023 for -h,-k,l	Xtriage
F_o, F_c correlation	0.89	EDS
Total number of atoms	12820	wwPDB-VP
Average B, all atoms (Å ²)	56.0	wwPDB-VP

Xtriage's analysis on translational NCS is as follows: *The largest off-origin peak in the Patterson function is 2.56% of the height of the origin peak. No significant pseudotranslation is detected.*

¹Intensities estimated from amplitudes.

²Theoretical values of $\langle |L| \rangle$, $\langle L^2 \rangle$ for acentric reflections are 0.5, 0.333 respectively for untwinned datasets, and 0.375, 0.2 for perfectly twinned datasets.

5 Model quality

5.1 Standard geometry

Bond lengths and bond angles in the following residue types are not validated in this section: MAN, JUY, NAG, MN, BMA

The Z score for a bond length (or angle) is the number of standard deviations the observed value is removed from the expected value. A bond length (or angle) with $|Z| > 5$ is considered an outlier worth inspection. RMSZ is the root-mean-square of all Z scores of the bond lengths (or angles).

Mol	Chain	Bond lengths		Bond angles	
		RMSZ	$\# Z > 5$	RMSZ	$\# Z > 5$
1	A	0.25	0/7319	0.46	0/9922
2	B	0.25	0/5370	0.49	0/7261
All	All	0.25	0/12689	0.47	0/17183

Chiral center outliers are detected by calculating the chiral volume of a chiral center and verifying if the center is modelled as a planar moiety or with the opposite hand. A planarity outlier is detected by checking planarity of atoms in a peptide group, atoms in a mainchain group or atoms of a sidechain that are expected to be planar.

Mol	Chain	#Chirality outliers	#Planarity outliers
2	B	0	3

There are no bond length outliers.

There are no bond angle outliers.

There are no chirality outliers.

All (3) planarity outliers are listed below:

Mol	Chain	Res	Type	Group
2	B	453	GLY	Peptide
2	B	472	GLU	Peptide
2	B	479	ARG	Peptide

5.2 Too-close contacts

In the following table, the Non-H and H(model) columns list the number of non-hydrogen atoms and hydrogen atoms in the chain respectively. The H(added) column lists the number of hydrogen atoms added and optimized by MolProbity. The Clashes column lists the number of clashes within the asymmetric unit, whereas Symm-Clashes lists symmetry-related clashes.

Mol	Chain	Non-H	H(model)	H(added)	Clashes	Symm-Clashes
1	A	7163	0	6978	153	0
2	B	5275	0	5003	168	1
3	C	28	0	25	1	0
3	E	28	0	25	0	0
3	F	28	0	25	0	0
3	G	28	0	25	1	0
4	D	72	0	61	3	0
5	H	39	0	34	6	0
6	A	70	0	65	6	0
6	B	42	0	39	2	0
7	A	5	0	0	0	0
7	B	3	0	0	0	0
8	B	35	0	0	1	0
9	B	4	0	0	0	0
All	All	12820	0	12280	327	1

The all-atom clashscore is defined as the number of clashes found per 1000 atoms (including hydrogen atoms). The all-atom clashscore for this structure is 13.

The worst 5 of 327 close contacts within the same asymmetric unit are listed below, sorted by their clash magnitude.

Atom-1	Atom-2	Interatomic distance (Å)	Clash overlap (Å)
2:B:492:GLN:HB2	2:B:493:PRO:HD2	1.43	0.98
1:A:938:ILE:HG13	1:A:939:GLU:H	1.35	0.91
5:H:2:NAG:H3	5:H:2:NAG:H83	1.55	0.86
6:A:1012:NAG:H83	6:A:1012:NAG:H3	1.57	0.85
1:A:940:ASP:O	1:A:941:ILE:HG13	1.76	0.85

All (1) symmetry-related close contacts are listed below. The label for Atom-2 includes the symmetry operator and encoded unit-cell translations to be applied.

Atom-1	Atom-2	Interatomic distance (Å)	Clash overlap (Å)
2:B:77:SER:OG	2:B:641:SER:O[5_555]	2.05	0.15

5.3 Torsion angles [i](#)

5.3.1 Protein backbone [i](#)

In the following table, the Percentiles column shows the percent Ramachandran outliers of the chain as a percentile score with respect to all X-ray entries followed by that with respect to entries

of similar resolution.

The Analysed column shows the number of residues for which the backbone conformation was analysed, and the total number of residues.

Mol	Chain	Analysed	Favoured	Allowed	Outliers	Percentiles	
1	A	916/954 (96%)	838 (92%)	77 (8%)	1 (0%)	51	85
2	B	685/687 (100%)	579 (84%)	103 (15%)	3 (0%)	34	72
All	All	1601/1641 (98%)	1417 (88%)	180 (11%)	4 (0%)	47	82

All (4) Ramachandran outliers are listed below:

Mol	Chain	Res	Type
2	B	450	ASN
2	B	453	GLY
1	A	940	ASP
2	B	443	PRO

5.3.2 Protein sidechains ⓘ

In the following table, the Percentiles column shows the percent sidechain outliers of the chain as a percentile score with respect to all X-ray entries followed by that with respect to entries of similar resolution.

The Analysed column shows the number of residues for which the sidechain conformation was analysed, and the total number of residues.

Mol	Chain	Analysed	Rotameric	Outliers	Percentiles	
1	A	780/809 (96%)	771 (99%)	9 (1%)	71	90
2	B	610/610 (100%)	596 (98%)	14 (2%)	50	80
All	All	1390/1419 (98%)	1367 (98%)	23 (2%)	60	85

5 of 23 residues with a non-rotameric sidechain are listed below:

Mol	Chain	Res	Type
2	B	474	SER
2	B	503	CYS
2	B	486	CYS
2	B	509	HIS
1	A	622	ASP

Sometimes sidechains can be flipped to improve hydrogen bonding and reduce clashes. There are no such sidechains identified.

5.3.3 RNA ⓘ

There are no RNA molecules in this entry.

5.4 Non-standard residues in protein, DNA, RNA chains ⓘ

There are no non-standard protein/DNA/RNA residues in this entry.

5.5 Carbohydrates ⓘ

17 monosaccharides are modelled in this entry.

In the following table, the Counts columns list the number of bonds (or angles) for which Mogul statistics could be retrieved, the number of bonds (or angles) that are observed in the model and the number of bonds (or angles) that are defined in the Chemical Component Dictionary. The Link column lists molecule types, if any, to which the group is linked. The Z score for a bond length (or angle) is the number of standard deviations the observed value is removed from the expected value. A bond length (or angle) with $|Z| > 2$ is considered an outlier worth inspection. RMSZ is the root-mean-square of all Z scores of the bond lengths (or angles).

Mol	Type	Chain	Res	Link	Bond lengths			Bond angles		
					Counts	RMSZ	# $ Z > 2$	Counts	RMSZ	# $ Z > 2$
3	NAG	C	1	1,3	14,14,15	0.27	0	17,19,21	0.42	0
3	NAG	C	2	3	14,14,15	0.23	0	17,19,21	0.40	0
4	NAG	D	1	1,4	14,14,15	0.39	0	17,19,21	0.41	0
4	NAG	D	2	4	14,14,15	0.26	0	17,19,21	0.45	0
4	BMA	D	3	4	11,11,12	0.59	0	15,15,17	0.83	0
4	BMA	D	4	4	11,11,12	0.89	0	15,15,17	0.91	1 (6%)
4	MAN	D	5	4	11,11,12	1.54	2 (18%)	15,15,17	2.16	5 (33%)
4	MAN	D	6	4	11,11,12	1.29	2 (18%)	15,15,17	1.09	1 (6%)
3	NAG	E	1	1,3	14,14,15	0.23	0	17,19,21	0.39	0
3	NAG	E	2	3	14,14,15	0.19	0	17,19,21	0.45	0
3	NAG	F	1	1,3	14,14,15	0.21	0	17,19,21	0.40	0
3	NAG	F	2	3	14,14,15	0.42	0	17,19,21	0.69	1 (5%)
3	NAG	G	1	2,3	14,14,15	0.34	0	17,19,21	0.48	0
3	NAG	G	2	3	14,14,15	0.49	0	17,19,21	0.66	1 (5%)
5	NAG	H	1	2,5	14,14,15	0.27	0	17,19,21	0.47	0
5	NAG	H	2	5	14,14,15	0.27	0	17,19,21	0.57	0
5	BMA	H	3	5	11,11,12	1.00	0	15,15,17	2.92	6 (40%)

In the following table, the Chirals column lists the number of chiral outliers, the number of chiral centers analysed, the number of these observed in the model and the number defined in the Chemical Component Dictionary. Similar counts are reported in the Torsion and Rings columns.

'-' means no outliers of that kind were identified.

Mol	Type	Chain	Res	Link	Chirals	Torsions	Rings
3	NAG	C	1	1,3	-	1/6/23/26	0/1/1/1
3	NAG	C	2	3	-	2/6/23/26	0/1/1/1
4	NAG	D	1	1,4	-	2/6/23/26	0/1/1/1
4	NAG	D	2	4	-	2/6/23/26	0/1/1/1
4	BMA	D	3	4	-	2/2/19/22	0/1/1/1
4	BMA	D	4	4	-	1/2/19/22	1/1/1/1
4	MAN	D	5	4	-	2/2/19/22	0/1/1/1
4	MAN	D	6	4	-	0/2/19/22	0/1/1/1
3	NAG	E	1	1,3	-	3/6/23/26	0/1/1/1
3	NAG	E	2	3	-	4/6/23/26	0/1/1/1
3	NAG	F	1	1,3	-	2/6/23/26	0/1/1/1
3	NAG	F	2	3	-	2/6/23/26	0/1/1/1
3	NAG	G	1	2,3	-	2/6/23/26	0/1/1/1
3	NAG	G	2	3	-	4/6/23/26	0/1/1/1
5	NAG	H	1	2,5	-	2/6/23/26	0/1/1/1
5	NAG	H	2	5	-	5/6/23/26	0/1/1/1
5	BMA	H	3	5	-	1/2/19/22	0/1/1/1

All (4) bond length outliers are listed below:

Mol	Chain	Res	Type	Atoms	Z	Observed(Å)	Ideal(Å)
4	D	5	MAN	C1-C2	4.26	1.61	1.52
4	D	6	MAN	O5-C1	-2.63	1.39	1.43
4	D	5	MAN	O5-C1	2.51	1.47	1.43
4	D	6	MAN	C2-C3	2.35	1.56	1.52

The worst 5 of 15 bond angle outliers are listed below:

Mol	Chain	Res	Type	Atoms	Z	Observed(°)	Ideal(°)
5	H	3	BMA	C1-C2-C3	5.98	117.02	109.67
5	H	3	BMA	C1-O5-C5	5.54	119.70	112.19
4	D	5	MAN	C1-O5-C5	5.52	119.67	112.19
5	H	3	BMA	O3-C3-C2	5.04	119.64	109.99
4	D	5	MAN	C1-C2-C3	3.84	114.38	109.67

There are no chirality outliers.

5 of 37 torsion outliers are listed below:

Mol	Chain	Res	Type	Atoms
4	D	1	NAG	C4-C5-C6-O6
4	D	1	NAG	O5-C5-C6-O6
3	G	2	NAG	C4-C5-C6-O6
4	D	5	MAN	O5-C5-C6-O6
3	C	2	NAG	O5-C5-C6-O6

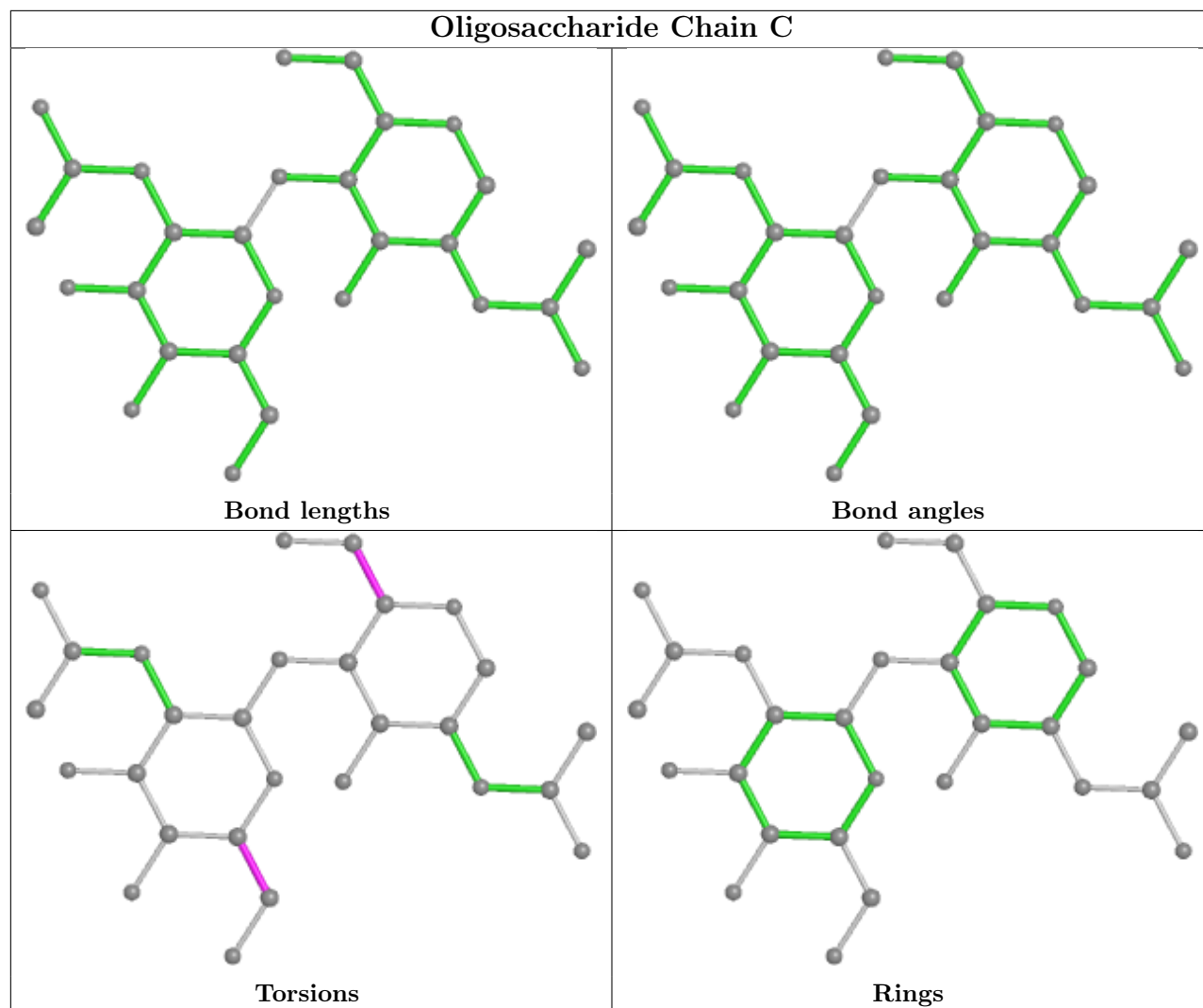
All (1) ring outliers are listed below:

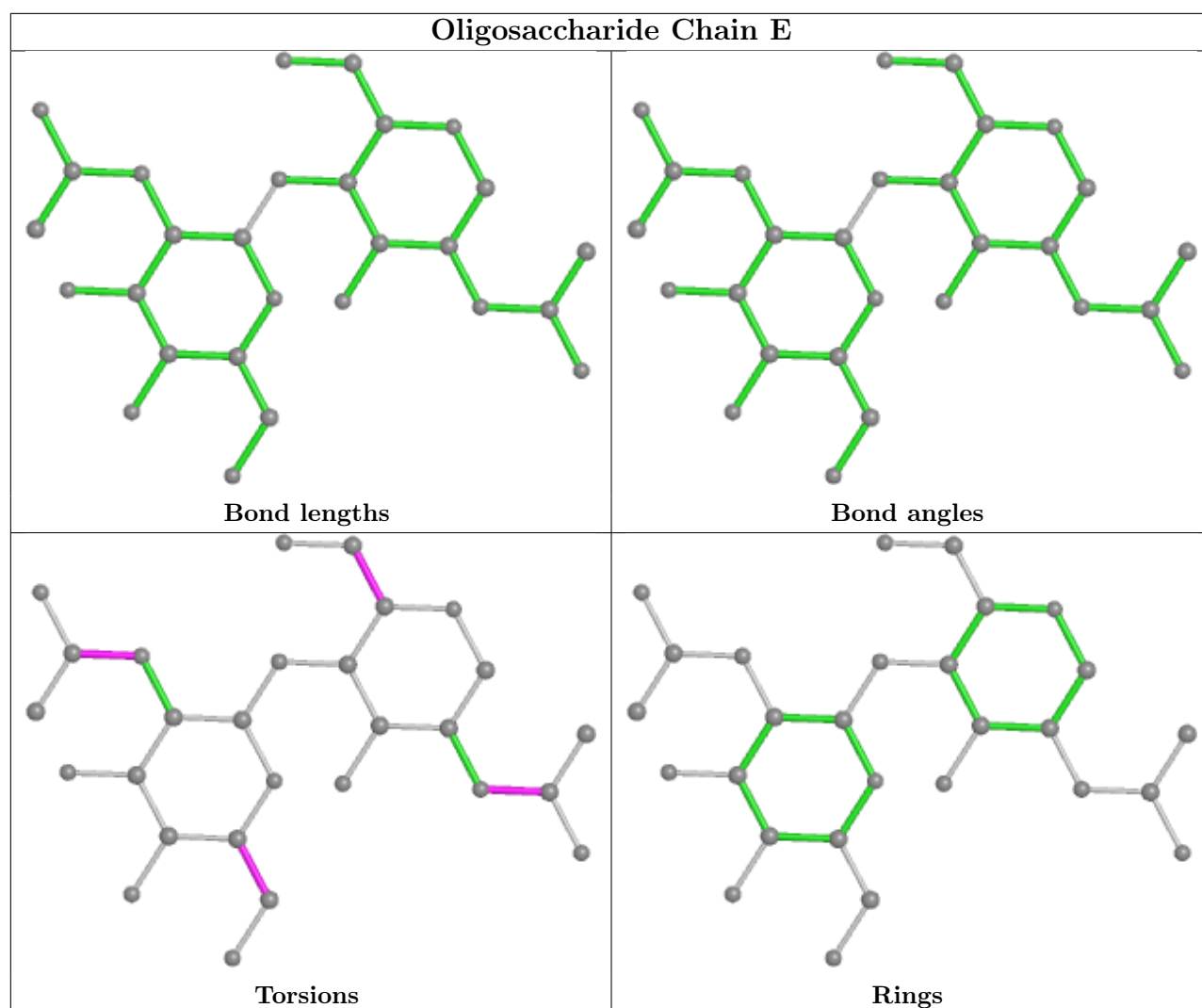
Mol	Chain	Res	Type	Atoms
4	D	4	BMA	C1-C2-C3-C4-C5-O5

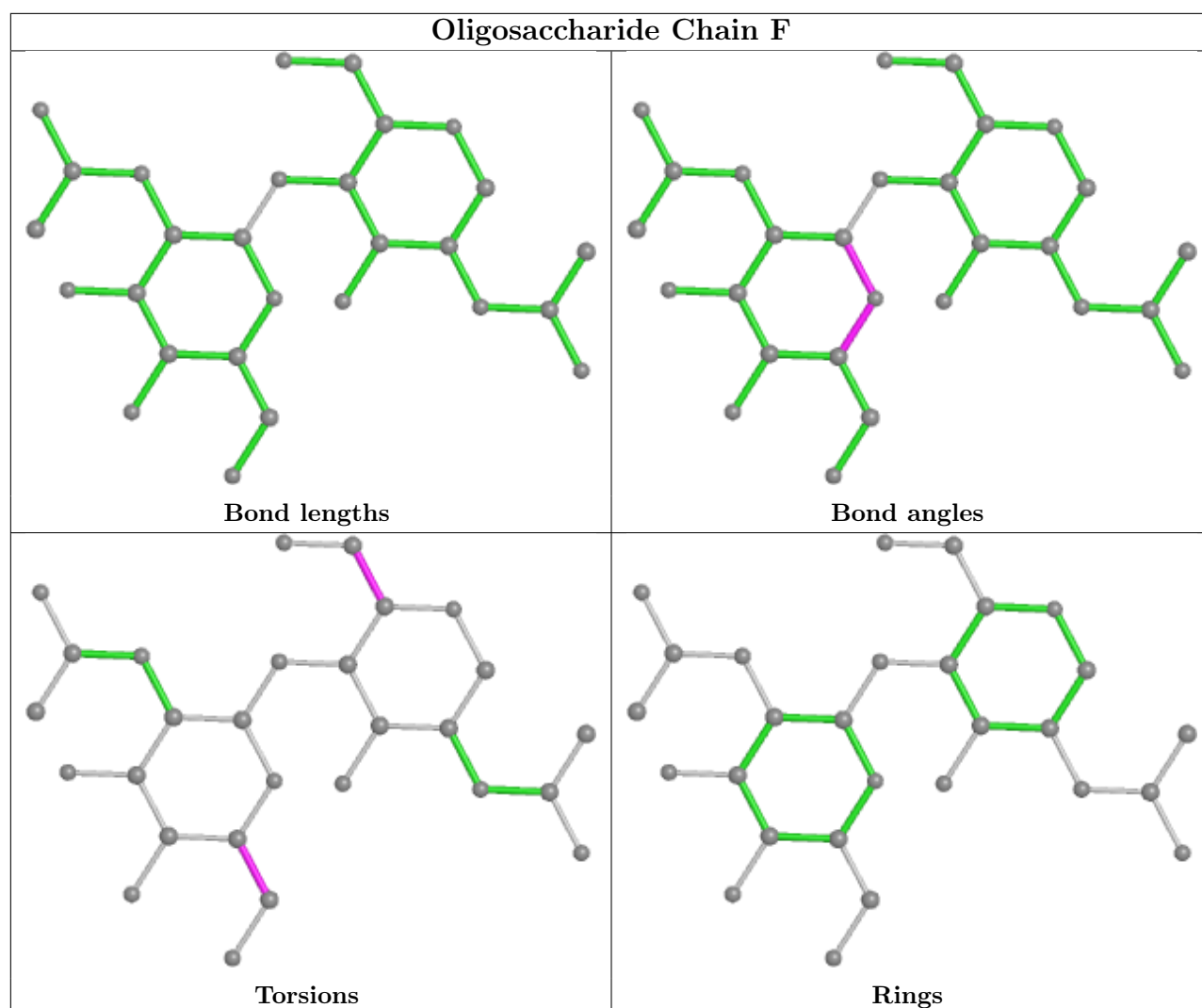
8 monomers are involved in 11 short contacts:

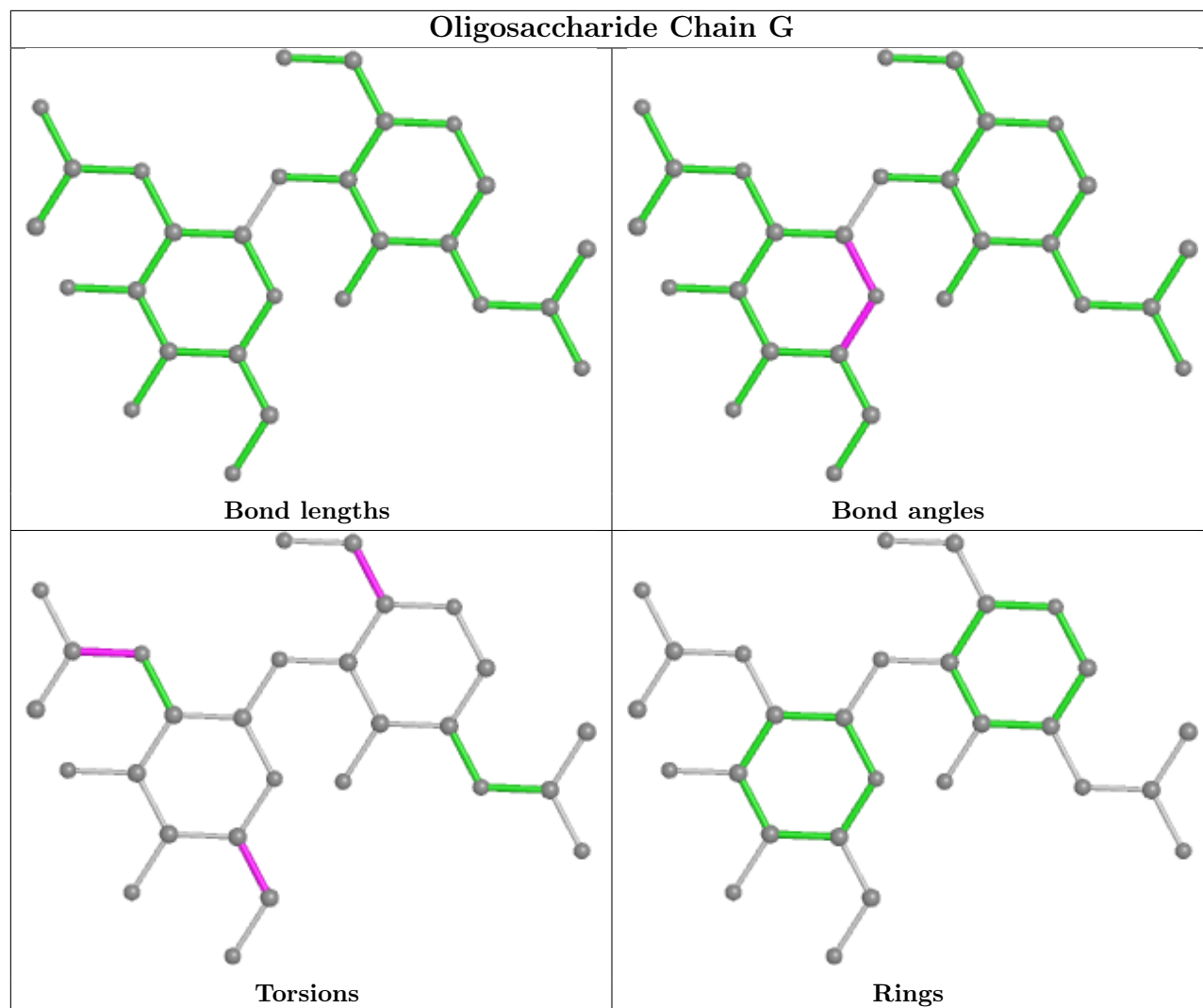
Mol	Chain	Res	Type	Clashes	Symm-Clashes
3	G	2	NAG	1	0
3	C	1	NAG	1	0
3	C	2	NAG	1	0
4	D	2	NAG	1	0
4	D	3	BMA	1	0
4	D	5	MAN	2	0
4	D	4	BMA	1	0
5	H	2	NAG	6	0

The following is a two-dimensional graphical depiction of Mogul quality analysis of bond lengths, bond angles, torsion angles, and ring geometry for oligosaccharide.

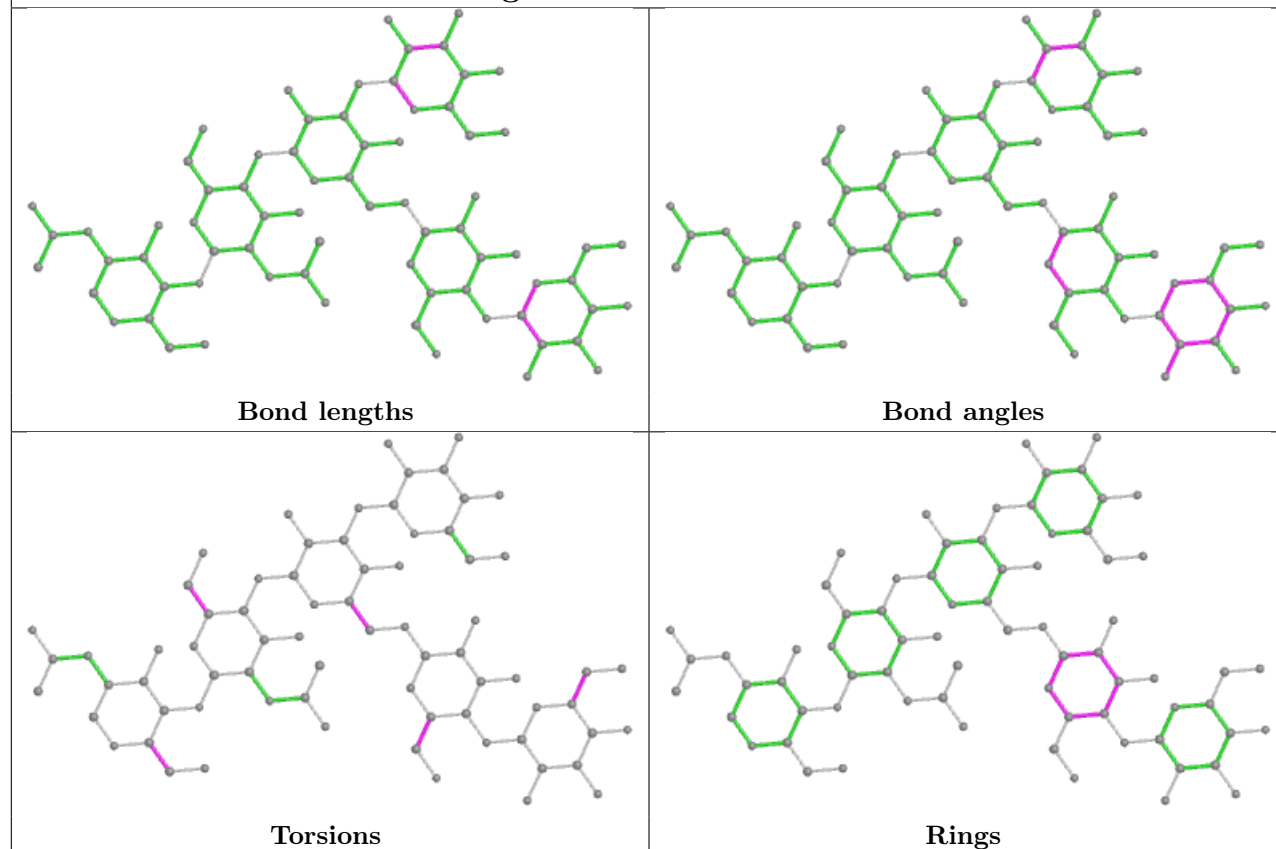




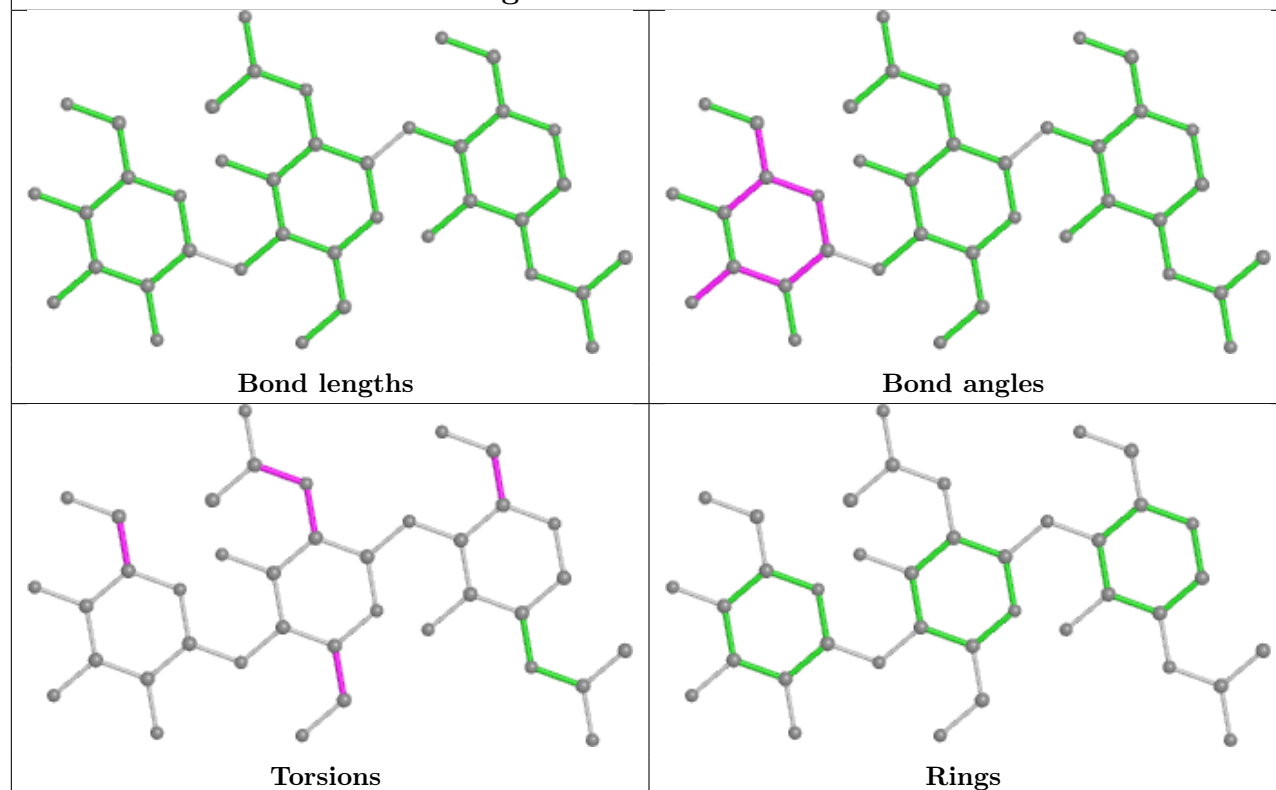




Oligosaccharide Chain D



Oligosaccharide Chain H



5.6 Ligand geometry

Of 17 ligands modelled in this entry, 8 are monoatomic - leaving 9 for Mogul analysis.

In the following table, the Counts columns list the number of bonds (or angles) for which Mogul statistics could be retrieved, the number of bonds (or angles) that are observed in the model and the number of bonds (or angles) that are defined in the Chemical Component Dictionary. The Link column lists molecule types, if any, to which the group is linked. The Z score for a bond length (or angle) is the number of standard deviations the observed value is removed from the expected value. A bond length (or angle) with $|Z| > 2$ is considered an outlier worth inspection. RMSZ is the root-mean-square of all Z scores of the bond lengths (or angles).

Mol	Type	Chain	Res	Link	Bond lengths			Bond angles		
					Counts	RMSZ	# $ Z > 2$	Counts	RMSZ	# $ Z > 2$
8	JUY	B	712	7	37,38,38	2.99	14 (37%)	44,51,51	2.51	16 (36%)
6	NAG	A	1016	1	14,14,15	0.26	0	17,19,21	0.38	0
6	NAG	B	711	2	14,14,15	0.30	0	17,19,21	0.40	0
6	NAG	A	1012	1	14,14,15	0.19	0	17,19,21	0.59	0
6	NAG	B	701	2	14,14,15	0.41	0	17,19,21	0.69	1 (5%)
6	NAG	A	1003	1	14,14,15	0.35	0	17,19,21	0.78	1 (5%)
6	NAG	B	702	2	14,14,15	0.31	0	17,19,21	0.41	0
6	NAG	A	1017	1	14,14,15	0.26	0	17,19,21	0.38	0
6	NAG	A	1013	1	14,14,15	0.31	0	17,19,21	0.36	0

In the following table, the Chirals column lists the number of chiral outliers, the number of chiral centers analysed, the number of these observed in the model and the number defined in the Chemical Component Dictionary. Similar counts are reported in the Torsion and Rings columns. '-' means no outliers of that kind were identified.

Mol	Type	Chain	Res	Link	Chirals	Torsions	Rings
8	JUY	B	712	7	-	4/21/25/25	0/4/4/4
6	NAG	A	1016	1	-	0/6/23/26	0/1/1/1
6	NAG	B	711	2	-	0/6/23/26	0/1/1/1
6	NAG	A	1012	1	-	3/6/23/26	0/1/1/1
6	NAG	B	701	2	-	0/6/23/26	0/1/1/1
6	NAG	A	1003	1	-	3/6/23/26	0/1/1/1
6	NAG	B	702	2	-	1/6/23/26	0/1/1/1
6	NAG	A	1017	1	-	3/6/23/26	0/1/1/1
6	NAG	A	1013	1	-	1/6/23/26	0/1/1/1

The worst 5 of 14 bond length outliers are listed below:

Mol	Chain	Res	Type	Atoms	Z	Observed(Å)	Ideal(Å)
8	B	712	JUY	C19-C18	8.88	1.57	1.36

Continued on next page...

Continued from previous page...

Mol	Chain	Res	Type	Atoms	Z	Observed(Å)	Ideal(Å)
8	B	712	JUY	C20-N21	7.25	1.47	1.32
8	B	712	JUY	C22-N21	6.41	1.45	1.37
8	B	712	JUY	C27-S31	6.20	1.82	1.73
8	B	712	JUY	C19-C20	6.11	1.55	1.37

The worst 5 of 18 bond angle outliers are listed below:

Mol	Chain	Res	Type	Atoms	Z	Observed(°)	Ideal(°)
8	B	712	JUY	C14-N23-C22	6.94	120.80	117.51
8	B	712	JUY	C18-C17-C22	6.18	122.48	117.75
8	B	712	JUY	C27-N28-C29	5.80	115.27	103.78
8	B	712	JUY	C19-C20-N21	-5.27	115.86	123.94
8	B	712	JUY	C18-C19-C20	-3.91	113.90	118.93

There are no chirality outliers.

5 of 15 torsion outliers are listed below:

Mol	Chain	Res	Type	Atoms
6	A	1003	NAG	O5-C5-C6-O6
6	A	1003	NAG	C4-C5-C6-O6
6	A	1012	NAG	C8-C7-N2-C2
6	A	1012	NAG	O7-C7-N2-C2
6	A	1017	NAG	C8-C7-N2-C2

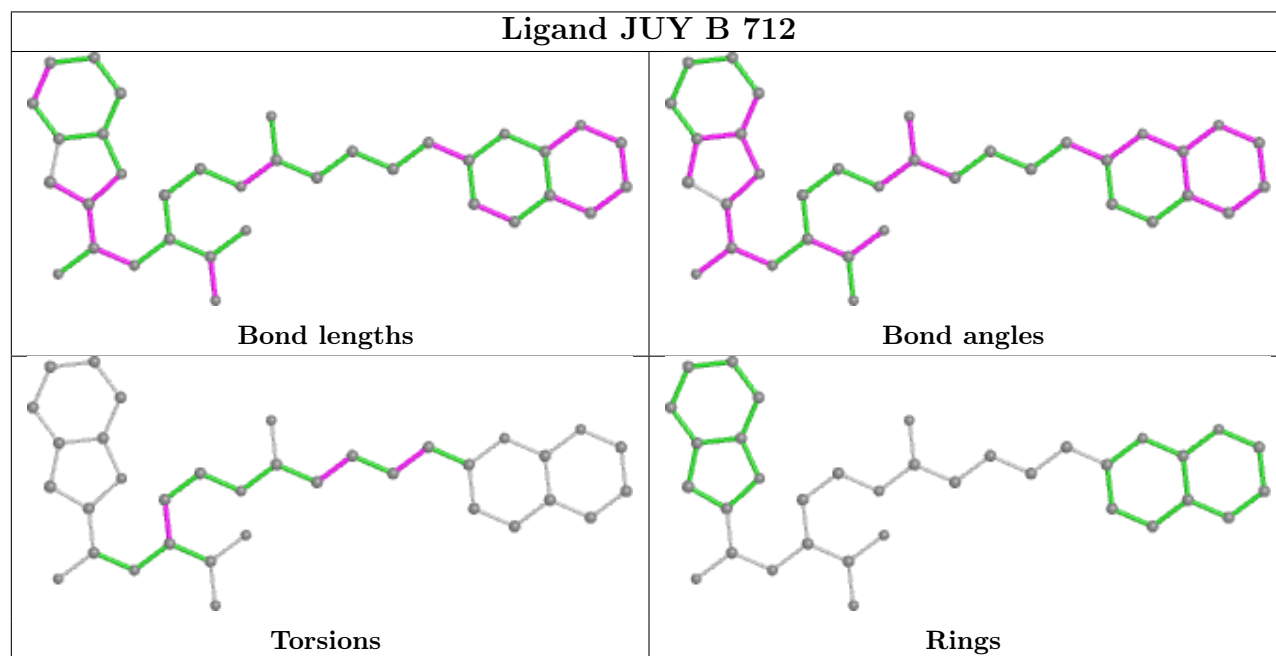
There are no ring outliers.

5 monomers are involved in 9 short contacts:

Mol	Chain	Res	Type	Clashes	Symm-Clashes
8	B	712	JUY	1	0
6	B	711	NAG	1	0
6	A	1012	NAG	4	0
6	A	1003	NAG	2	0
6	B	702	NAG	1	0

The following is a two-dimensional graphical depiction of Mogul quality analysis of bond lengths, bond angles, torsion angles, and ring geometry for all instances of the Ligand of Interest. In addition, ligands with molecular weight > 250 and outliers as shown on the validation Tables will also be included. For torsion angles, if less than 5% of the Mogul distribution of torsion angles is within 10 degrees of the torsion angle in question, then that torsion angle is considered an outlier. Any bond that is central to one or more torsion angles identified as an outlier by Mogul will be highlighted in the graph. For rings, the root-mean-square deviation (RMSD) between the ring in question and similar rings identified by Mogul is calculated over all ring torsion angles. If the

average RMSD is greater than 60 degrees and the minimal RMSD between the ring in question and any Mogul-identified rings is also greater than 60 degrees, then that ring is considered an outlier. The outliers are highlighted in purple. The color gray indicates Mogul did not find sufficient equivalents in the CSD to analyse the geometry.



5.7 Other polymers [i](#)

There are no such residues in this entry.

5.8 Polymer linkage issues [i](#)

There are no chain breaks in this entry.

6 Fit of model and data [i](#)

6.1 Protein, DNA and RNA chains [i](#)

In the following table, the column labelled ‘#RSRZ > 2’ contains the number (and percentage) of RSRZ outliers, followed by percent RSRZ outliers for the chain as percentile scores relative to all X-ray entries and entries of similar resolution. The OWAB column contains the minimum, median, 95th percentile and maximum values of the occupancy-weighted average B-factor per residue. The column labelled ‘Q < 0.9’ lists the number of (and percentage) of residues with an average occupancy less than 0.9.

Mol	Chain	Analysed	<RSRZ>	#RSRZ>2	OWAB(Å ²)	Q<0.9
1	A	920/954 (96%)	-0.22	7 (0%) 86 65	17, 44, 91, 121	0
2	B	687/687 (100%)	0.16	50 (7%) 15 4	21, 56, 133, 165	1 (0%)
All	All	1607/1641 (97%)	-0.06	57 (3%) 44 18	17, 50, 119, 165	1 (0%)

The worst 5 of 57 RSRZ outliers are listed below:

Mol	Chain	Res	Type	RSRZ
2	B	466	TRP	10.1
2	B	36	PRO	9.8
2	B	441	ALA	8.4
2	B	29	GLU	7.3
2	B	482	GLN	7.3

6.2 Non-standard residues in protein, DNA, RNA chains [i](#)

There are no non-standard protein/DNA/RNA residues in this entry.

6.3 Carbohydrates [i](#)

In the following table, the Atoms column lists the number of modelled atoms in the group and the number defined in the chemical component dictionary. The B-factors column lists the minimum, median, 95th percentile and maximum values of B factors of atoms in the group. The column labelled ‘Q < 0.9’ lists the number of atoms with occupancy less than 0.9.

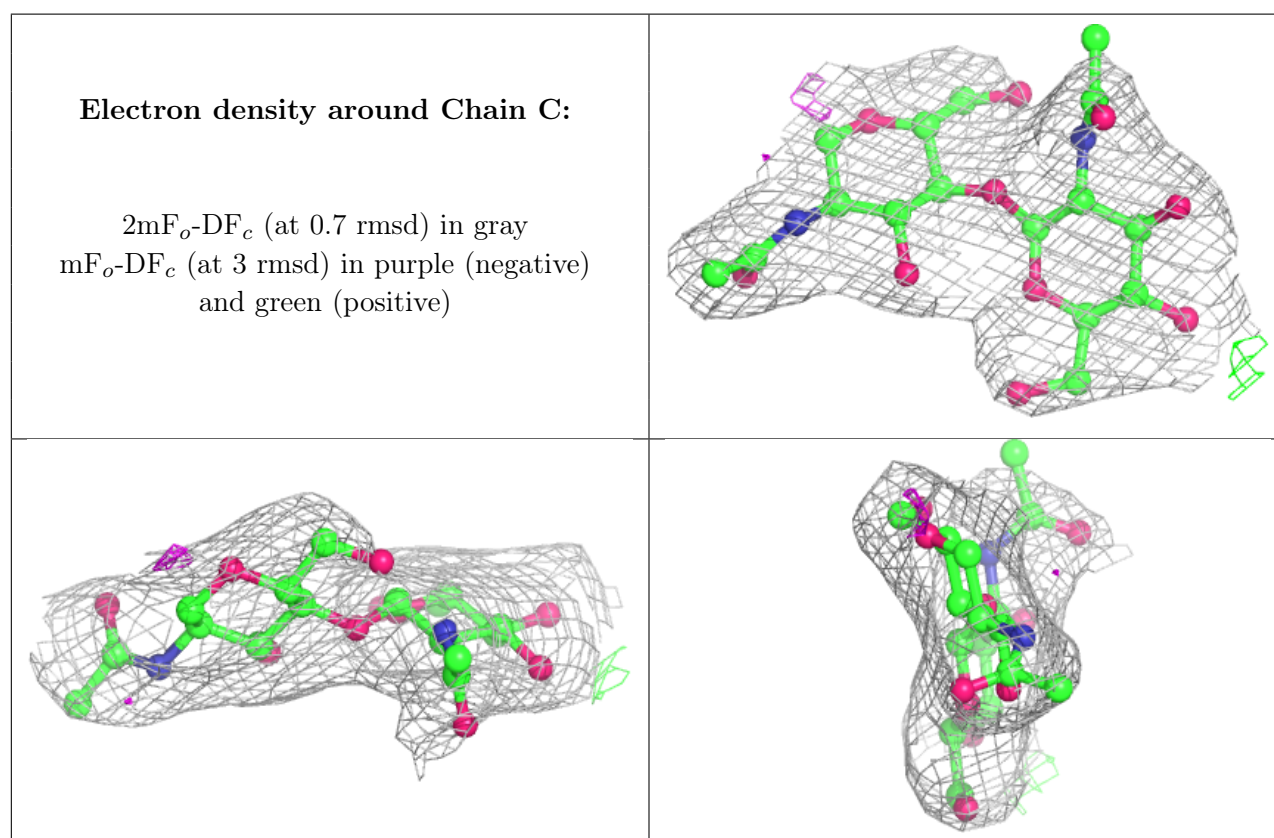
Mol	Type	Chain	Res	Atoms	RSCC	RSR	B-factors(Å ²)	Q<0.9
3	NAG	G	2	14/15	0.75	0.30	92,108,113,118	0
3	NAG	F	2	14/15	0.80	0.40	60,84,95,99	0
4	BMA	D	4	11/12	0.80	0.19	58,71,78,80	0
3	NAG	E	2	14/15	0.83	0.30	58,83,90,92	0
3	NAG	F	1	14/15	0.84	0.29	48,71,78,96	0

Continued on next page...

Continued from previous page...

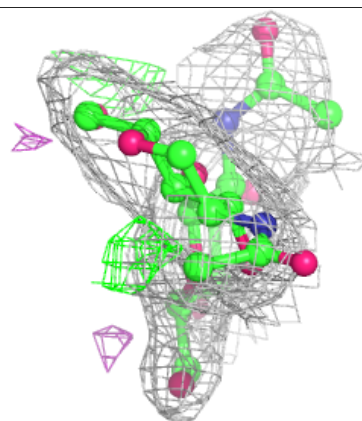
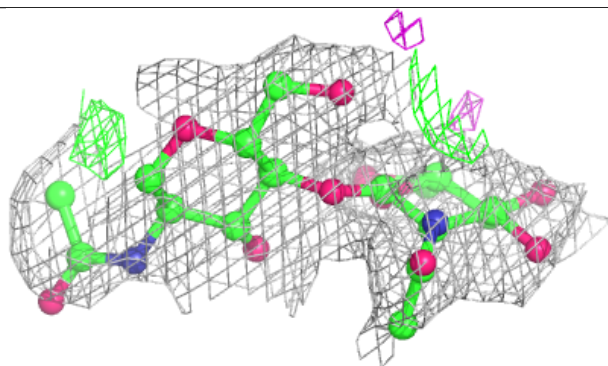
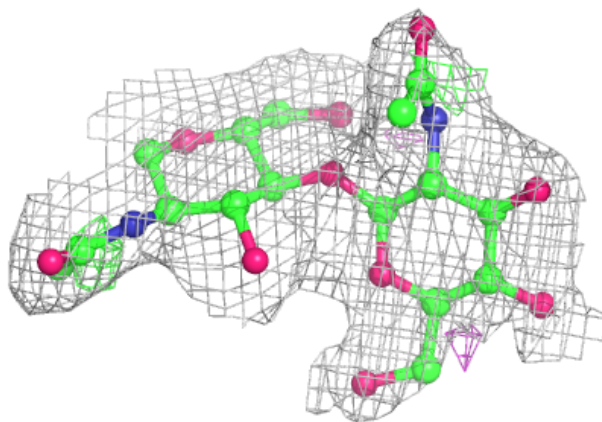
Mol	Type	Chain	Res	Atoms	RSCC	RSR	B-factors(\AA^2)	Q<0.9
5	BMA	H	3	11/12	0.84	0.21	60,78,88,91	0
4	MAN	D	6	11/12	0.85	0.25	64,72,87,89	0
5	NAG	H	2	14/15	0.88	0.30	84,96,112,112	0
3	NAG	G	1	14/15	0.88	0.14	46,64,80,82	0
3	NAG	E	1	14/15	0.89	0.23	32,55,78,79	0
4	MAN	D	5	11/12	0.90	0.19	47,64,75,79	0
3	NAG	C	2	14/15	0.92	0.15	39,54,61,73	0
5	NAG	H	1	14/15	0.95	0.18	43,52,71,76	0
4	BMA	D	3	11/12	0.95	0.09	46,54,70,80	0
3	NAG	C	1	14/15	0.95	0.16	4,24,51,55	0
4	NAG	D	2	14/15	0.96	0.14	13,36,54,71	0
4	NAG	D	1	14/15	0.97	0.13	5,24,42,51	0

The following is a graphical depiction of the model fit to experimental electron density for oligosaccharide. Each fit is shown from different orientation to approximate a three-dimensional view.



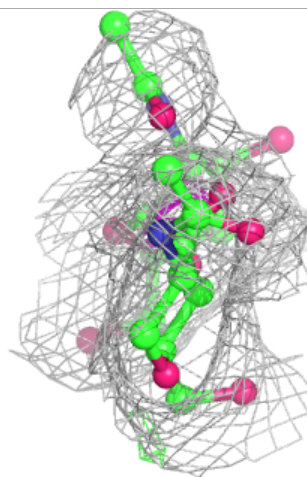
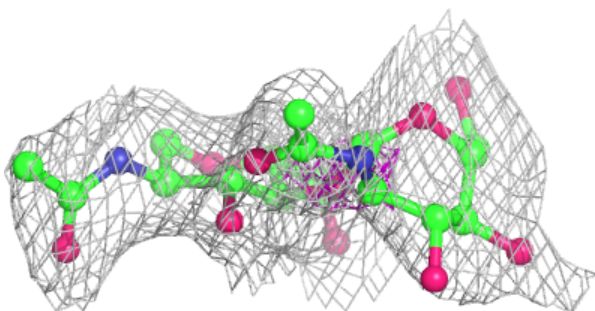
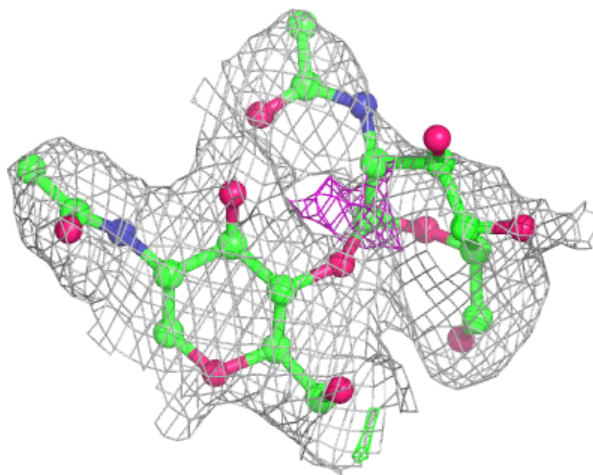
Electron density around Chain E:

$2mF_o-DF_c$ (at 0.7 rmsd) in gray
 mF_o-DF_c (at 3 rmsd) in purple (negative)
and green (positive)



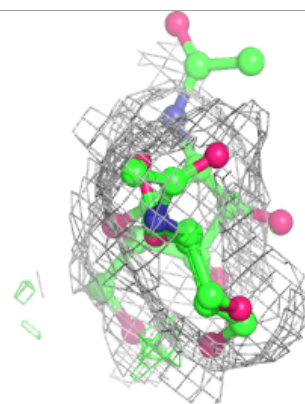
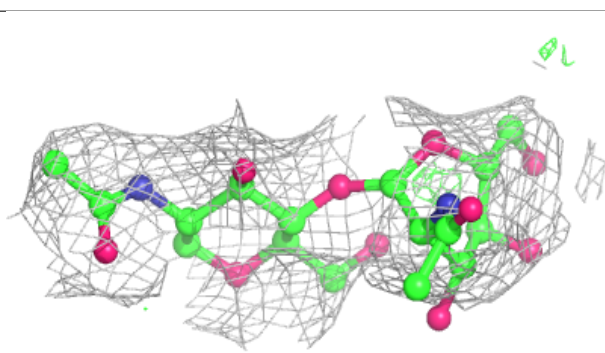
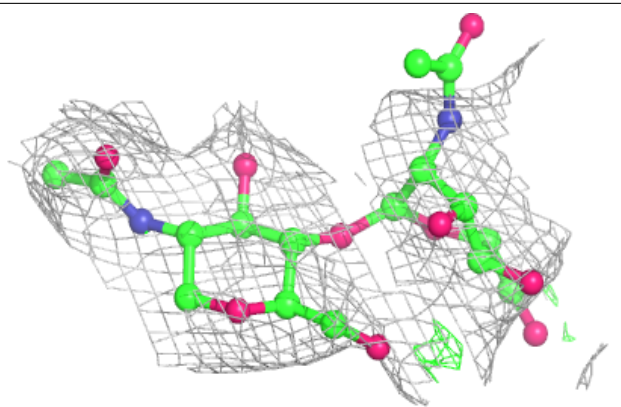
Electron density around Chain F:

$2mF_o-DF_c$ (at 0.7 rmsd) in gray
 mF_o-DF_c (at 3 rmsd) in purple (negative)
and green (positive)

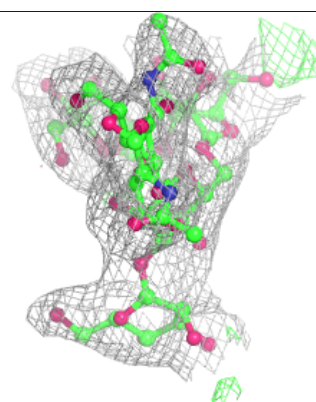
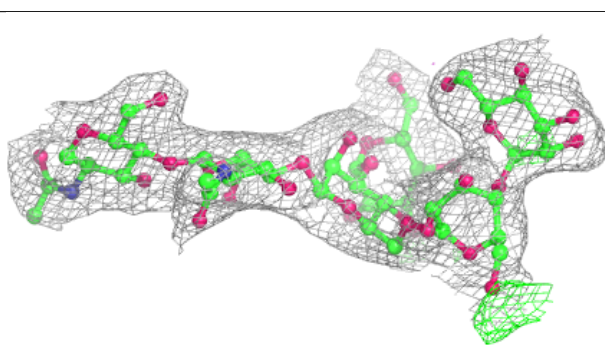
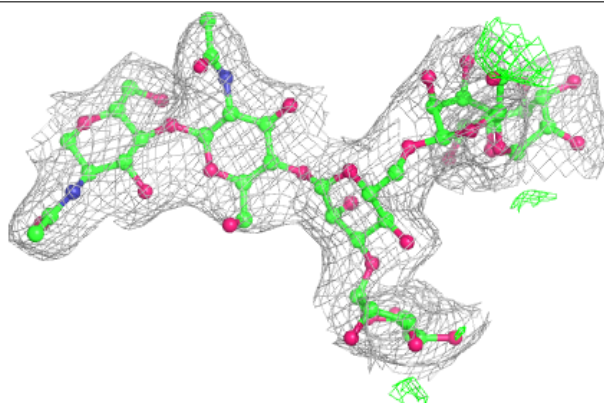


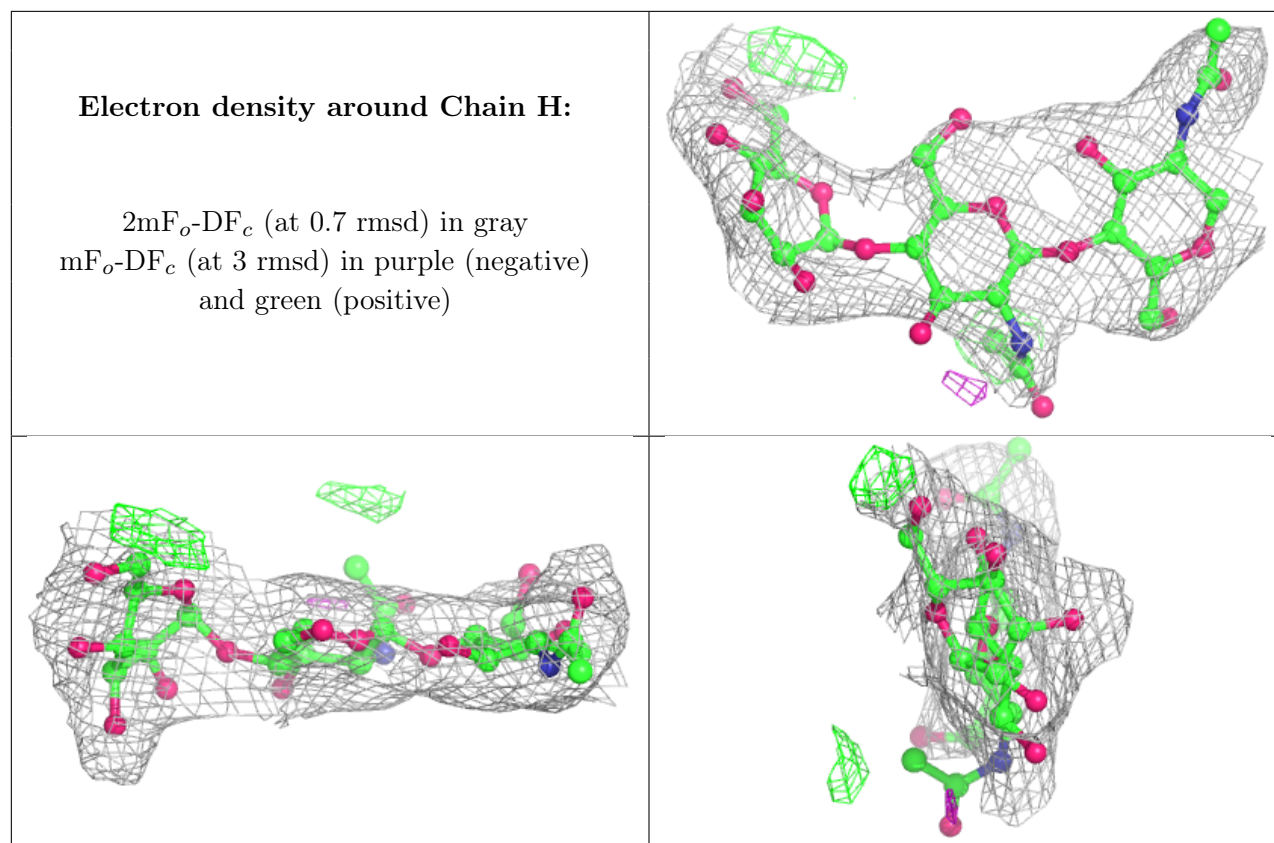
Electron density around Chain G:

$2mF_o-DF_c$ (at 0.7 rmsd) in gray
 mF_o-DF_c (at 3 rmsd) in purple (negative)
and green (positive)

**Electron density around Chain D:**

$2mF_o-DF_c$ (at 0.7 rmsd) in gray
 mF_o-DF_c (at 3 rmsd) in purple (negative)
and green (positive)





6.4 Ligands [i](#)

In the following table, the Atoms column lists the number of modelled atoms in the group and the number defined in the chemical component dictionary. The B-factors column lists the minimum, median, 95th percentile and maximum values of B factors of atoms in the group. The column labelled 'Q< 0.9' lists the number of atoms with occupancy less than 0.9.

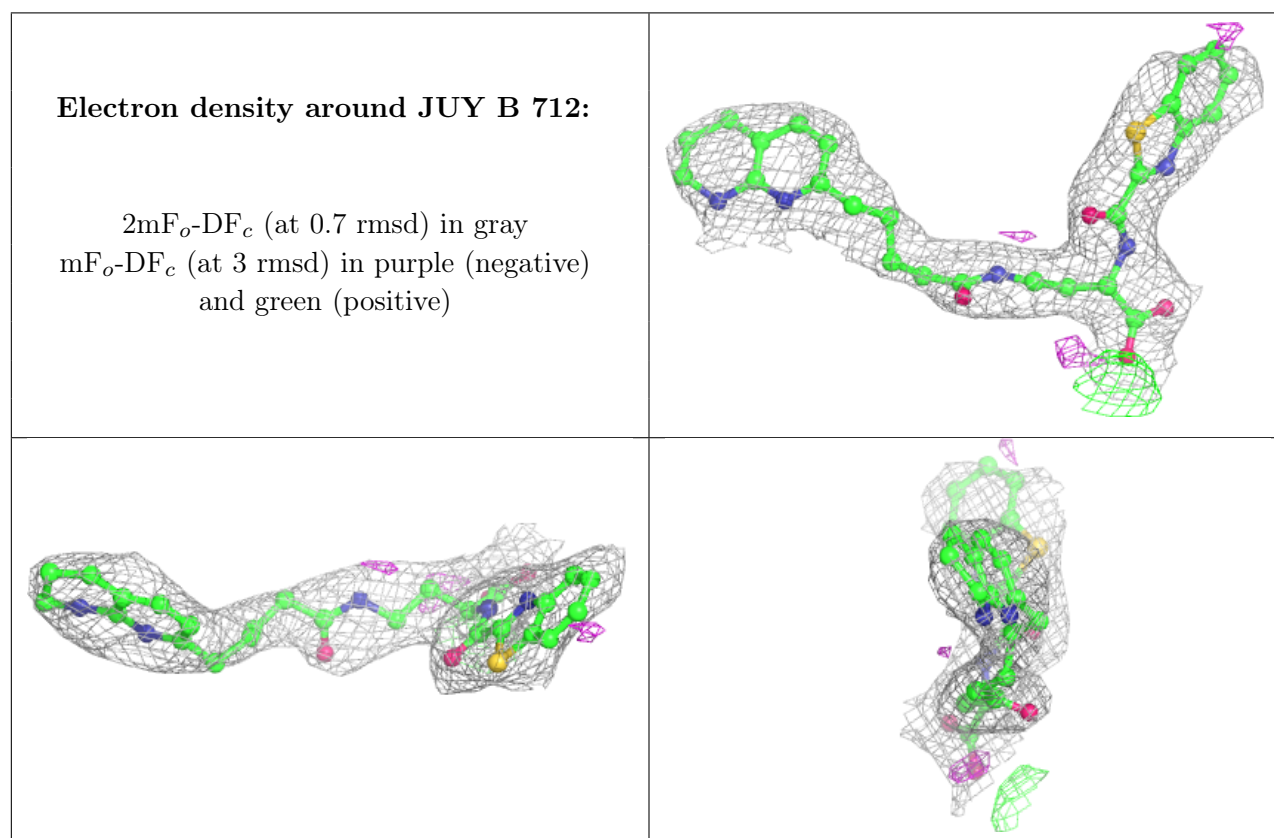
Mol	Type	Chain	Res	Atoms	RSCC	RSR	B-factors(\AA^2)	Q<0.9
7	MN	B	709	1/1	0.30	0.31	210,210,210,210	0
6	NAG	A	1013	14/15	0.50	0.48	55,96,103,103	0
6	NAG	B	701	14/15	0.73	0.41	68,88,99,101	0
7	MN	B	708	1/1	0.75	0.28	80,80,80,80	0
6	NAG	B	711	14/15	0.79	0.28	58,68,81,86	0
6	NAG	A	1012	14/15	0.81	0.18	51,72,88,90	0
6	NAG	B	702	14/15	0.88	0.18	56,73,91,103	0
6	NAG	A	1003	14/15	0.88	0.19	52,69,79,79	0
7	MN	A	1018	1/1	0.89	0.15	99,99,99,99	0
7	MN	A	1020	1/1	0.89	0.16	76,76,76,76	0
6	NAG	A	1016	14/15	0.91	0.17	18,60,65,77	0
8	JUY	B	712	35/35	0.92	0.20	15,49,78,146	0
6	NAG	A	1017	14/15	0.94	0.17	30,52,73,75	0
7	MN	A	1019	1/1	0.96	0.29	178,178,178,178	0

Continued on next page...

Continued from previous page...

Mol	Type	Chain	Res	Atoms	RSCC	RSR	B-factors(\AA^2)	Q<0.9
7	MN	A	1021	1/1	0.97	0.17	105,105,105,105	0
7	MN	A	1022	1/1	0.98	0.17	83,83,83,83	0
7	MN	B	710	1/1	0.99	0.19	46,46,46,46	0

The following is a graphical depiction of the model fit to experimental electron density of all instances of the Ligand of Interest. In addition, ligands with molecular weight > 250 and outliers as shown on the geometry validation Tables will also be included. Each fit is shown from different orientation to approximate a three-dimensional view.



6.5 Other polymers [i](#)

There are no such residues in this entry.