



Full wwPDB X-ray Structure Validation Report ⓘ

Oct 29, 2024 – 02:57 AM EDT

PDB ID : 3MK1
Title : Refinement of placental alkaline phosphatase complexed with nitrophenyl
Authors : Stec, B.; Cheltsov, A.; Millan, J.L.
Deposited on : 2010-04-13
Resolution : 1.57 Å(reported)

This is a Full wwPDB X-ray Structure Validation Report for a publicly released PDB entry.

We welcome your comments at validation@mail.wwpdb.org

A user guide is available at

<https://www.wwpdb.org/validation/2017/XrayValidationReportHelp>

with specific help available everywhere you see the ⓘ symbol.

The types of validation reports are described at

<http://www.wwpdb.org/validation/2017/FAQs#types>.

The following versions of software and data (see [references ⓘ](#)) were used in the production of this report:

MolProbity : 4.02b-467
Mogul : 2022.3.0, CSD as543be (2022)
Xtriage (Phenix) : 1.20.1
EDS : 3.0
Percentile statistics : 20231227.v01 (using entries in the PDB archive December 27th 2023)
CCP4 : 9.0.003 (Gargrove)
Density-Fitness : 1.0.11
Ideal geometry (proteins) : Engh & Huber (2001)
Ideal geometry (DNA, RNA) : Parkinson et al. (1996)
Validation Pipeline (wwPDB-VP) : 2.39

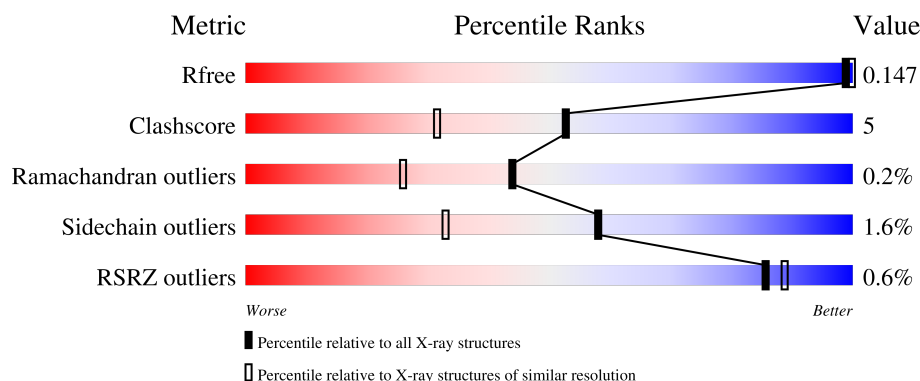
1 Overall quality at a glance

The following experimental techniques were used to determine the structure:

X-RAY DIFFRACTION

The reported resolution of this entry is 1.57 Å.

Percentile scores (ranging between 0-100) for global validation metrics of the entry are shown in the following graphic. The table shows the number of entries on which the scores are based.



Metric	Whole archive (#Entries)	Similar resolution (#Entries, resolution range(Å))
R_{free}	164625	7165 (1.60-1.56)
Clashscore	180529	1026 (1.58-1.58)
Ramachandran outliers	177936	1005 (1.58-1.58)
Sidechain outliers	177891	1004 (1.58-1.58)
RSRZ outliers	164620	7163 (1.60-1.56)

The table below summarises the geometric issues observed across the polymeric chains and their fit to the electron density. The red, orange, yellow and green segments of the lower bar indicate the fraction of residues that contain outliers for ≥ 3 , 2, 1 and 0 types of geometric quality criteria respectively. A grey segment represents the fraction of residues that are not modelled. The numeric value for each fraction is indicated below the corresponding segment, with a dot representing fractions $\leq 5\%$. The upper red bar (where present) indicates the fraction of residues that have poor fit to the electron density. The numeric value is given above the bar.

Mol	Chain	Length	Quality of chain
1	A	484	 90% 8% ..
2	B	2	 50% 50%
2	C	2	 100%

2 Entry composition [i](#)

There are 10 unique types of molecules in this entry. The entry contains 4518 atoms, of which 0 are hydrogens and 0 are deuteriums.

In the tables below, the ZeroOcc column contains the number of atoms modelled with zero occupancy, the AltConf column contains the number of residues with at least one atom in alternate conformation and the Trace column contains the number of residues modelled with at most 2 atoms.

- Molecule 1 is a protein called Alkaline phosphatase, placental type.

Mol	Chain	Residues	Atoms						ZeroOcc	AltConf	Trace
1	A	481	Total	C	N	O	P	S	0	35	0
			3839	2401	680	738	1	19			

- Molecule 2 is an oligosaccharide called 2-acetamido-2-deoxy-beta-D-glucopyranose-(1-4)-2-acetamido-2-deoxy-beta-D-glucopyranose.



Mol	Chain	Residues	Atoms				ZeroOcc	AltConf	Trace
2	B	2	Total	C	N	O	0	0	0
			28	16	2	10			
2	C	2	Total	C	N	O	0	0	0
			28	16	2	10			

- Molecule 3 is ZINC ION (three-letter code: ZN) (formula: Zn).

Mol	Chain	Residues	Atoms		ZeroOcc	AltConf
3	A	3	Total	Zn	0	1
			3	3		

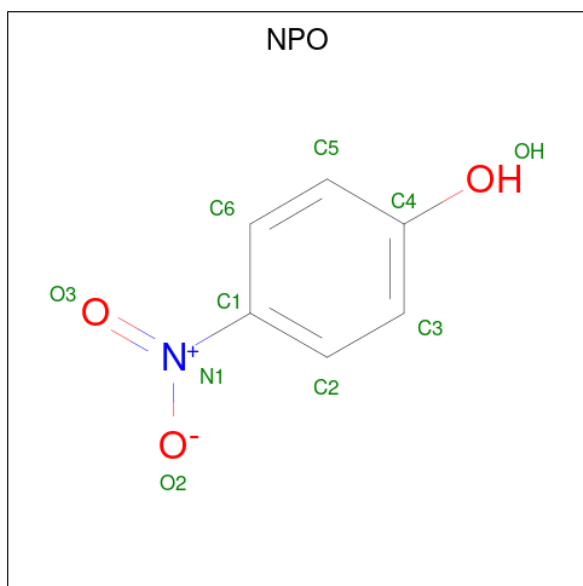
- Molecule 4 is MAGNESIUM ION (three-letter code: MG) (formula: Mg).

Mol	Chain	Residues	Atoms		ZeroOcc	AltConf
4	A	1	Total	Mg	0	1
			1	1		

- Molecule 5 is CALCIUM ION (three-letter code: CA) (formula: Ca).

Mol	Chain	Residues	Atoms		ZeroOcc	AltConf
5	A	1	Total	Ca	0	0
			1	1		

- Molecule 6 is P-NITROPHENOL (three-letter code: NPO) (formula: $C_6H_5NO_3$).



Mol	Chain	Residues	Atoms				ZeroOcc	AltConf
6	A	1	Total	C	N	O	0	0
			10	6	1	3		
6	A	1	Total	C	N	O	0	0
			10	6	1	3		
6	A	1	Total	C	N	O	0	0
			10	6	1	3		

- Molecule 7 is PHOSPHATE ION (three-letter code: PO4) (formula: O_4P).



Mol	Chain	Residues	Atoms			ZeroOcc	AltConf
7	A	1	Total	O	P	0	0
			5	4	1		

- Molecule 8 is ACETATE ION (three-letter code: ACT) (formula: $C_2H_3O_2$).



Mol	Chain	Residues	Atoms			ZeroOcc	AltConf
8	A	1	Total	C	O	0	0
			4	2	2		
8	A	1	Total	C	O	0	0
			4	2	2		
8	A	1	Total	C	O	0	0
			4	2	2		

- Molecule 9 is SODIUM ION (three-letter code: NA) (formula: Na).

Mol	Chain	Residues	Atoms		ZeroOcc	AltConf
9	A	1	Total 1	Na 1	0	0

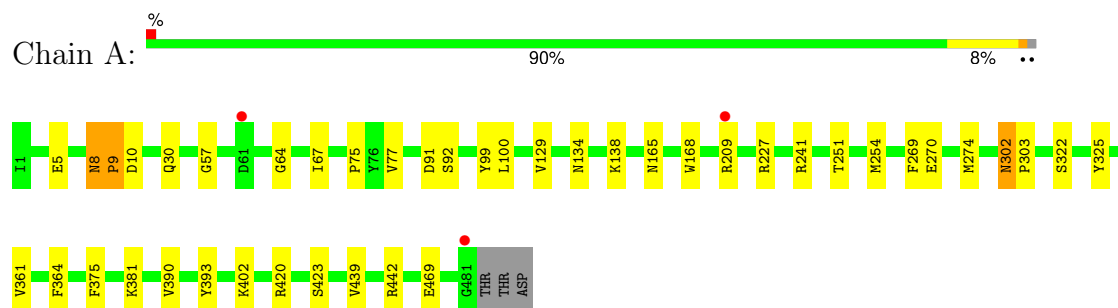
- Molecule 10 is water.

Mol	Chain	Residues	Atoms		ZeroOcc	AltConf
10	A	570	Total 570	O 570	0	0

3 Residue-property plots [i](#)

These plots are drawn for all protein, RNA, DNA and oligosaccharide chains in the entry. The first graphic for a chain summarises the proportions of the various outlier classes displayed in the second graphic. The second graphic shows the sequence view annotated by issues in geometry and electron density. Residues are color-coded according to the number of geometric quality criteria for which they contain at least one outlier: green = 0, yellow = 1, orange = 2 and red = 3 or more. A red dot above a residue indicates a poor fit to the electron density ($RSRZ > 2$). Stretches of 2 or more consecutive residues without any outlier are shown as a green connector. Residues present in the sample, but not in the model, are shown in grey.

- Molecule 1: Alkaline phosphatase, placental type



- Molecule 2: 2-acetamido-2-deoxy-beta-D-glucopyranose-(1-4)-2-acetamido-2-deoxy-beta-D-glucopyranose



- Molecule 2: 2-acetamido-2-deoxy-beta-D-glucopyranose-(1-4)-2-acetamido-2-deoxy-beta-D-glucopyranose



4 Data and refinement statistics

Property	Value	Source
Space group	C 2 2 21	Depositor
Cell constants a, b, c, α , β , γ	88.35Å 114.57Å 106.57Å 90.00° 90.00° 90.00°	Depositor
Resolution (Å)	70.01 – 1.57 69.96 – 1.57	Depositor EDS
% Data completeness (in resolution range)	96.4 (70.01-1.57) 96.4 (69.96-1.57)	Depositor EDS
R_{merge}	(Not available)	Depositor
R_{sym}	(Not available)	Depositor
$\langle I/\sigma(I) \rangle$ ¹	1.59 (at 1.57Å)	Xtriage
Refinement program	REFMAC 5.2.0019	Depositor
R, R_{free}	0.139 , 0.178 0.142 , 0.147	Depositor DCC
R_{free} test set	3651 reflections (5.04%)	wwPDB-VP
Wilson B-factor (Å ²)	15.7	Xtriage
Anisotropy	0.157	Xtriage
Bulk solvent k_{sol} (e/Å ³), B_{sol} (Å ²)	0.36 , 60.4	EDS
L-test for twinning ²	$\langle L \rangle = 0.50$, $\langle L^2 \rangle = 0.33$	Xtriage
Estimated twinning fraction	No twinning to report.	Xtriage
F_o, F_c correlation	0.98	EDS
Total number of atoms	4518	wwPDB-VP
Average B, all atoms (Å ²)	20.0	wwPDB-VP

Xtriage's analysis on translational NCS is as follows: *The largest off-origin peak in the Patterson function is 4.02% of the height of the origin peak. No significant pseudotranslation is detected.*

¹Intensities estimated from amplitudes.

²Theoretical values of $\langle |L| \rangle$, $\langle L^2 \rangle$ for acentric reflections are 0.5, 0.333 respectively for untwinned datasets, and 0.375, 0.2 for perfectly twinned datasets.

5 Model quality

5.1 Standard geometry

Bond lengths and bond angles in the following residue types are not validated in this section: NAG, MG, NA, SEP, ACT, NPO, PO4, CA, ZN

The Z score for a bond length (or angle) is the number of standard deviations the observed value is removed from the expected value. A bond length (or angle) with $|Z| > 5$ is considered an outlier worth inspection. RMSZ is the root-mean-square of all Z scores of the bond lengths (or angles).

Mol	Chain	Bond lengths		Bond angles	
		RMSZ	$\# Z > 5$	RMSZ	$\# Z > 5$
1	A	0.46	0/4064	0.61	0/5501

There are no bond length outliers.

There are no bond angle outliers.

There are no chirality outliers.

There are no planarity outliers.

5.2 Too-close contacts

In the following table, the Non-H and H(model) columns list the number of non-hydrogen atoms and hydrogen atoms in the chain respectively. The H(added) column lists the number of hydrogen atoms added and optimized by MolProbity. The Clashes column lists the number of clashes within the asymmetric unit, whereas Symm-Clashes lists symmetry-related clashes.

Mol	Chain	Non-H	H(model)	H(added)	Clashes	Symm-Clashes
1	A	3839	0	3742	38	0
2	B	28	0	25	0	0
2	C	28	0	25	0	0
3	A	3	0	0	0	0
4	A	1	0	0	0	0
5	A	1	0	0	0	0
6	A	30	0	13	0	0
7	A	5	0	0	0	0
8	A	12	0	9	0	0
9	A	1	0	0	0	0
10	A	570	0	0	7	0
All	All	4518	0	3814	38	0

The all-atom clashscore is defined as the number of clashes found per 1000 atoms (including

hydrogen atoms). The all-atom clashscore for this structure is 5.

All (38) close contacts within the same asymmetric unit are listed below, sorted by their clash magnitude.

Atom-1	Atom-2	Interatomic distance (Å)	Clash overlap (Å)
1:A:57:GLY:HA2	1:A:67[B]:ILE:HG21	1.60	0.80
1:A:57:GLY:CA	1:A:67[B]:ILE:HG21	2.17	0.73
1:A:269:PHE:HB2	1:A:274[B]:MET:SD	2.38	0.62
1:A:251:THR:HA	1:A:254:MET:CE	2.33	0.58
1:A:381:LYS:HE3	10:A:1474:HOH:O	2.03	0.58
1:A:8:ASN:ND2	1:A:10:ASP:H	2.02	0.58
1:A:57:GLY:CA	1:A:67[B]:ILE:CG2	2.86	0.54
1:A:251:THR:HA	1:A:254:MET:HE3	1.91	0.52
1:A:64:GLY:O	1:A:67[B]:ILE:HG22	2.08	0.52
1:A:469[A]:GLU:HG3	10:A:1410:HOH:O	2.10	0.52
1:A:364:PHE:HE1	1:A:390[B]:VAL:HG11	1.76	0.51
1:A:57:GLY:HA3	1:A:67[B]:ILE:CG2	2.41	0.50
1:A:302:ASN:HD22	1:A:302:ASN:C	2.15	0.49
1:A:8:ASN:HD22	1:A:9:PRO:N	2.10	0.49
1:A:75:PRO:HD2	1:A:442[B]:ARG:HB2	1.94	0.49
1:A:393:TYR:O	1:A:423:SER:HA	2.12	0.49
1:A:129[B]:VAL:HG12	10:A:1232:HOH:O	2.11	0.49
1:A:8:ASN:HD22	1:A:8:ASN:C	2.16	0.49
1:A:364:PHE:CE1	1:A:390[B]:VAL:CG1	2.97	0.48
1:A:402[A]:LYS:HE3	10:A:1341:HOH:O	2.13	0.47
1:A:129[B]:VAL:CG1	10:A:1232:HOH:O	2.61	0.47
1:A:57:GLY:HA3	1:A:67[B]:ILE:HG21	1.96	0.47
1:A:302:ASN:HD22	1:A:303:PRO:N	2.13	0.46
1:A:364:PHE:CD1	1:A:390[B]:VAL:CG1	2.98	0.46
1:A:5[A]:GLU:HG2	10:A:1251:HOH:O	2.16	0.46
1:A:325:TYR:HA	1:A:375:PHE:CZ	2.51	0.45
1:A:251:THR:HA	1:A:254:MET:HE2	1.99	0.45
1:A:442[B]:ARG:NH1	10:A:1365:HOH:O	2.49	0.44
1:A:322:SER:O	1:A:420:ARG:HA	2.18	0.44
1:A:209:ARG:HA	1:A:227:ARG:HB2	2.01	0.43
1:A:99:TYR:CD1	1:A:100:LEU:HG	2.53	0.43
1:A:364:PHE:CE1	1:A:390[B]:VAL:HG11	2.55	0.42
1:A:134:ASN:OD1	1:A:138[A]:LYS:HE2	2.21	0.41
1:A:165:ASN:HB3	1:A:168:TRP:CD2	2.56	0.41
1:A:77:VAL:HA	1:A:439:VAL:O	2.21	0.40

There are no symmetry-related clashes.

5.3 Torsion angles [i](#)

5.3.1 Protein backbone [i](#)

In the following table, the Percentiles column shows the percent Ramachandran outliers of the chain as a percentile score with respect to all X-ray entries followed by that with respect to entries of similar resolution.

The Analysed column shows the number of residues for which the backbone conformation was analysed, and the total number of residues.

Mol	Chain	Analysed	Favoured	Allowed	Outliers	Percentiles
1	A	512/484 (106%)	501 (98%)	10 (2%)	1 (0%)	44 26

All (1) Ramachandran outliers are listed below:

Mol	Chain	Res	Type
1	A	361	VAL

5.3.2 Protein sidechains [i](#)

In the following table, the Percentiles column shows the percent sidechain outliers of the chain as a percentile score with respect to all X-ray entries followed by that with respect to entries of similar resolution.

The Analysed column shows the number of residues for which the sidechain conformation was analysed, and the total number of residues.

Mol	Chain	Analysed	Rotameric	Outliers	Percentiles
1	A	418/386 (108%)	412 (99%)	6 (1%)	62 39

All (6) residues with a non-rotameric sidechain are listed below:

Mol	Chain	Res	Type
1	A	8	ASN
1	A	9	PRO
1	A	30	GLN
1	A	91	ASP
1	A	241	ARG
1	A	302	ASN

Sometimes sidechains can be flipped to improve hydrogen bonding and reduce clashes. All (3) such sidechains are listed below:

Mol	Chain	Res	Type
1	A	8	ASN
1	A	167	ASN
1	A	302	ASN

5.3.3 RNA ⓘ

There are no RNA molecules in this entry.

5.4 Non-standard residues in protein, DNA, RNA chains ⓘ

1 non-standard protein/DNA/RNA residue is modelled in this entry.

In the following table, the Counts columns list the number of bonds (or angles) for which Mogul statistics could be retrieved, the number of bonds (or angles) that are observed in the model and the number of bonds (or angles) that are defined in the Chemical Component Dictionary. The Link column lists molecule types, if any, to which the group is linked. The Z score for a bond length (or angle) is the number of standard deviations the observed value is removed from the expected value. A bond length (or angle) with $|Z| > 2$ is considered an outlier worth inspection. RMSZ is the root-mean-square of all Z scores of the bond lengths (or angles).

Mol	Type	Chain	Res	Link	Bond lengths			Bond angles		
					Counts	RMSZ	# Z > 2	Counts	RMSZ	# Z > 2
1	SEP	A	92	3,1	8,9,10	1.47	1 (12%)	7,12,14	2.50	2 (28%)

In the following table, the Chirals column lists the number of chiral outliers, the number of chiral centers analysed, the number of these observed in the model and the number defined in the Chemical Component Dictionary. Similar counts are reported in the Torsion and Rings columns. '-' means no outliers of that kind were identified.

Mol	Type	Chain	Res	Link	Chirals	Torsions	Rings
1	SEP	A	92	3,1	-	1/6/8/10	-

All (1) bond length outliers are listed below:

Mol	Chain	Res	Type	Atoms	Z	Observed(Å)	Ideal(Å)
1	A	92	SEP	P-OG	3.85	1.72	1.60

All (2) bond angle outliers are listed below:

Mol	Chain	Res	Type	Atoms	Z	Observed(°)	Ideal(°)
1	A	92	SEP	O3P-P-OG	-5.51	92.31	106.67
1	A	92	SEP	O3P-P-O2P	2.66	117.79	107.80

There are no chirality outliers.

All (1) torsion outliers are listed below:

Mol	Chain	Res	Type	Atoms
1	A	92	SEP	CA-CB-OG-P

There are no ring outliers.

No monomer is involved in short contacts.

5.5 Carbohydrates [i](#)

4 monosaccharides are modelled in this entry.

In the following table, the Counts columns list the number of bonds (or angles) for which Mogul statistics could be retrieved, the number of bonds (or angles) that are observed in the model and the number of bonds (or angles) that are defined in the Chemical Component Dictionary. The Link column lists molecule types, if any, to which the group is linked. The Z score for a bond length (or angle) is the number of standard deviations the observed value is removed from the expected value. A bond length (or angle) with $|Z| > 2$ is considered an outlier worth inspection. RMSZ is the root-mean-square of all Z scores of the bond lengths (or angles).

Mol	Type	Chain	Res	Link	Bond lengths			Bond angles		
					Counts	RMSZ	$\# Z > 2$	Counts	RMSZ	$\# Z > 2$
2	NAG	B	1	2,1	14,14,15	0.61	0	17,19,21	0.80	1 (5%)
2	NAG	B	2	2	14,14,15	0.47	0	17,19,21	0.79	0
2	NAG	C	1	2,1	14,14,15	0.51	0	17,19,21	1.07	1 (5%)
2	NAG	C	2	2	14,14,15	0.50	0	17,19,21	1.07	1 (5%)

In the following table, the Chirals column lists the number of chiral outliers, the number of chiral centers analysed, the number of these observed in the model and the number defined in the Chemical Component Dictionary. Similar counts are reported in the Torsion and Rings columns. '-' means no outliers of that kind were identified.

Mol	Type	Chain	Res	Link	Chirals	Torsions	Rings
2	NAG	B	1	2,1	-	0/6/23/26	0/1/1/1
2	NAG	B	2	2	-	0/6/23/26	0/1/1/1
2	NAG	C	1	2,1	-	0/6/23/26	0/1/1/1
2	NAG	C	2	2	-	0/6/23/26	0/1/1/1

There are no bond length outliers.

All (3) bond angle outliers are listed below:

Mol	Chain	Res	Type	Atoms	Z	Observed(°)	Ideal(°)
2	C	1	NAG	O5-C1-C2	-3.27	106.24	111.29
2	C	2	NAG	C4-C3-C2	2.76	115.06	111.02
2	B	1	NAG	O5-C1-C2	-2.25	107.82	111.29

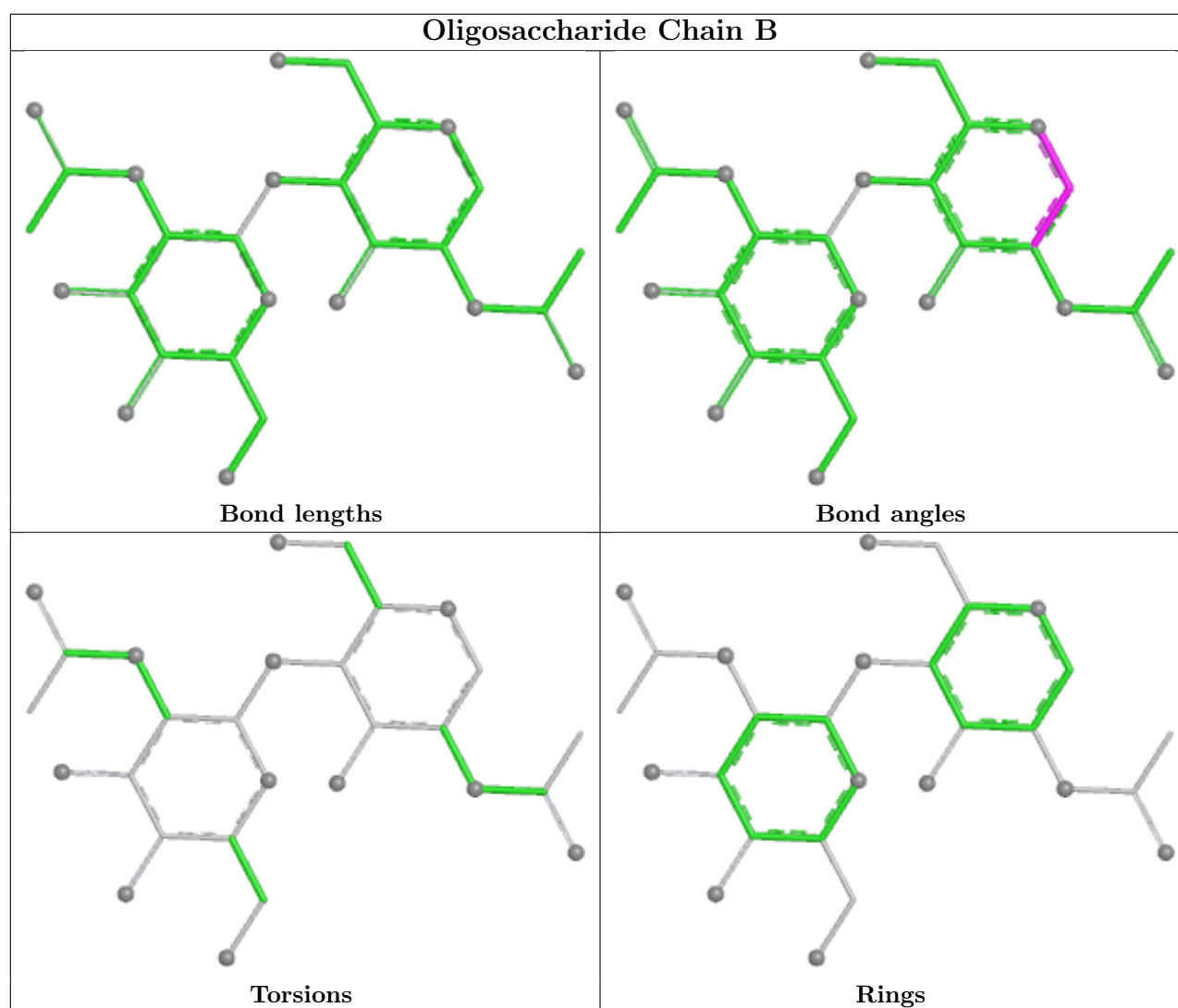
There are no chirality outliers.

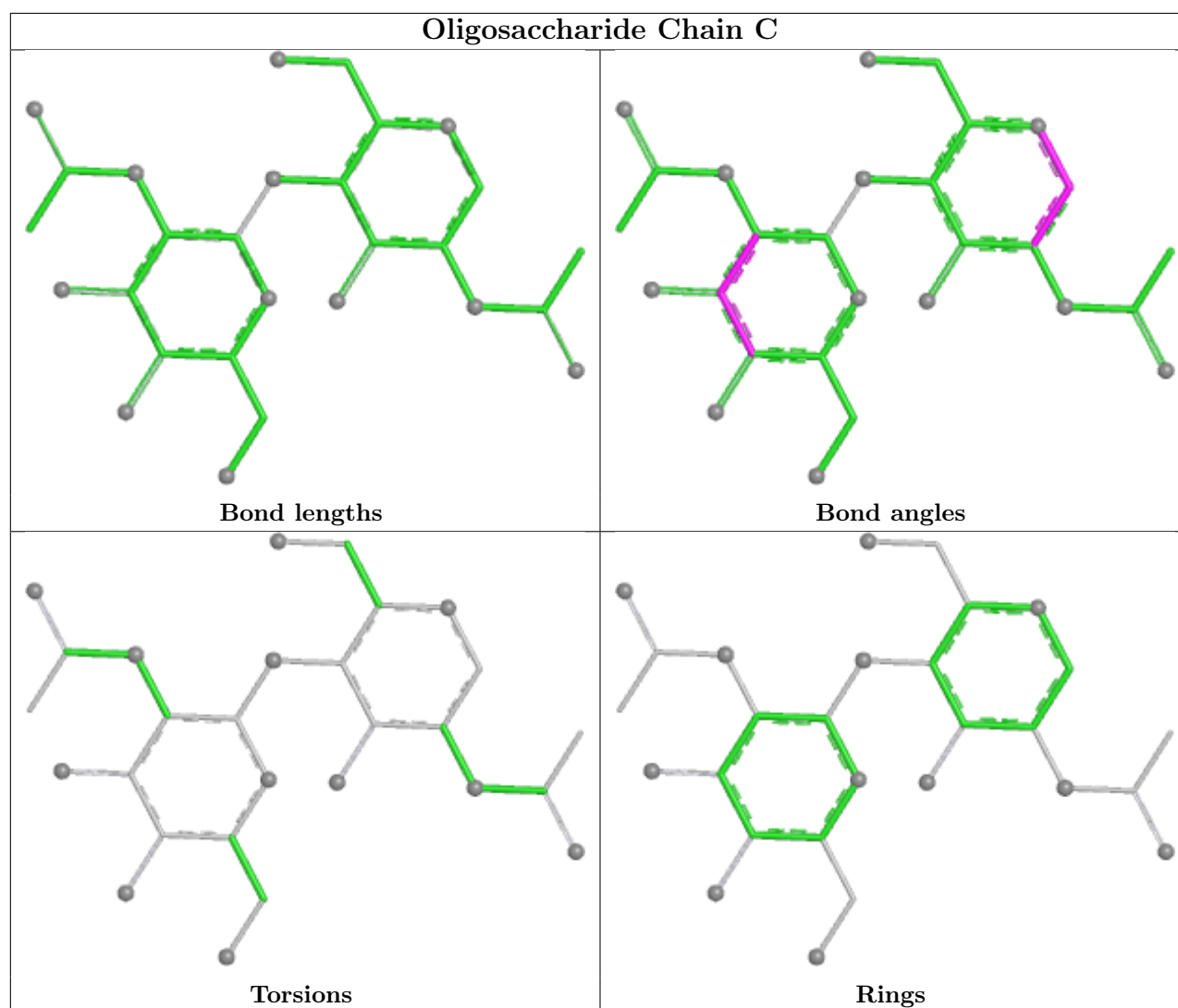
There are no torsion outliers.

There are no ring outliers.

No monomer is involved in short contacts.

The following is a two-dimensional graphical depiction of Mogul quality analysis of bond lengths, bond angles, torsion angles, and ring geometry for oligosaccharide.





5.6 Ligand geometry [i](#)

Of 13 ligands modelled in this entry, 6 are monoatomic - leaving 7 for Mogul analysis.

In the following table, the Counts columns list the number of bonds (or angles) for which Mogul statistics could be retrieved, the number of bonds (or angles) that are observed in the model and the number of bonds (or angles) that are defined in the Chemical Component Dictionary. The Link column lists molecule types, if any, to which the group is linked. The Z score for a bond length (or angle) is the number of standard deviations the observed value is removed from the expected value. A bond length (or angle) with $|Z| > 2$ is considered an outlier worth inspection. RMSZ is the root-mean-square of all Z scores of the bond lengths (or angles).

Mol	Type	Chain	Res	Link	Bond lengths			Bond angles		
					Counts	RMSZ	$\# Z > 2$	Counts	RMSZ	$\# Z > 2$
6	NPO	A	912	-	10,10,10	3.14	2 (20%)	11,13,13	1.39	2 (18%)
7	PO4	A	950	-	4,4,4	1.14	0	6,6,6	0.85	0
6	NPO	A	911	-	10,10,10	3.17	1 (10%)	11,13,13	0.54	0

Mol	Type	Chain	Res	Link	Bond lengths			Bond angles		
					Counts	RMSZ	# Z > 2	Counts	RMSZ	# Z > 2
8	ACT	A	934	-	3,3,3	0.81	0	3,3,3	1.30	0
8	ACT	A	935	-	3,3,3	0.75	0	3,3,3	1.30	0
8	ACT	A	933	-	3,3,3	0.81	0	3,3,3	1.25	0
6	NPO	A	913	-	10,10,10	3.22	2 (20%)	11,13,13	0.65	0

In the following table, the Chirals column lists the number of chiral outliers, the number of chiral centers analysed, the number of these observed in the model and the number defined in the Chemical Component Dictionary. Similar counts are reported in the Torsion and Rings columns. '-' means no outliers of that kind were identified.

Mol	Type	Chain	Res	Link	Chirals	Torsions	Rings
6	NPO	A	912	-	-	0/2/4/4	0/1/1/1
6	NPO	A	911	-	-	0/2/4/4	0/1/1/1
6	NPO	A	913	-	-	0/2/4/4	0/1/1/1

All (5) bond length outliers are listed below:

Mol	Chain	Res	Type	Atoms	Z	Observed(Å)	Ideal(Å)
6	A	913	NPO	O3-N1	9.83	1.39	1.22
6	A	911	NPO	O3-N1	9.70	1.39	1.22
6	A	912	NPO	O3-N1	9.47	1.39	1.22
6	A	912	NPO	C1-N1	-2.67	1.38	1.45
6	A	913	NPO	C1-N1	-2.14	1.40	1.45

All (2) bond angle outliers are listed below:

Mol	Chain	Res	Type	Atoms	Z	Observed(°)	Ideal(°)
6	A	912	NPO	C6-C1-N1	-3.16	116.58	119.34
6	A	912	NPO	C2-C1-N1	2.64	121.64	119.34

There are no chirality outliers.

There are no torsion outliers.

There are no ring outliers.

No monomer is involved in short contacts.

5.7 Other polymers ⓘ

There are no such residues in this entry.

5.8 Polymer linkage issues ⓘ

There are no chain breaks in this entry.

6 Fit of model and data [i](#)

6.1 Protein, DNA and RNA chains [i](#)

In the following table, the column labelled ‘#RSRZ> 2’ contains the number (and percentage) of RSRZ outliers, followed by percent RSRZ outliers for the chain as percentile scores relative to all X-ray entries and entries of similar resolution. The OWAB column contains the minimum, median, 95th percentile and maximum values of the occupancy-weighted average B-factor per residue. The column labelled ‘Q< 0.9’ lists the number of (and percentage) of residues with an average occupancy less than 0.9.

Mol	Chain	Analysed	<RSRZ>	#RSRZ>2	OWAB(Å ²)	Q<0.9
1	A	480/484 (99%)	-0.58	3 (0%) 85 89	9, 15, 26, 38	35 (7%)

All (3) RSRZ outliers are listed below:

Mol	Chain	Res	Type	RSRZ
1	A	61[A]	ASP	2.6
1	A	481	GLY	2.5
1	A	209	ARG	2.0

6.2 Non-standard residues in protein, DNA, RNA chains [i](#)

In the following table, the Atoms column lists the number of modelled atoms in the group and the number defined in the chemical component dictionary. The B-factors column lists the minimum, median, 95th percentile and maximum values of B factors of atoms in the group. The column labelled ‘Q< 0.9’ lists the number of atoms with occupancy less than 0.9.

Mol	Type	Chain	Res	Atoms	RSCC	RSR	B-factors(Å ²)	Q<0.9
1	SEP	A	92	10/11	0.99	0.03	10,12,14,15	0

6.3 Carbohydrates [i](#)

In the following table, the Atoms column lists the number of modelled atoms in the group and the number defined in the chemical component dictionary. The B-factors column lists the minimum, median, 95th percentile and maximum values of B factors of atoms in the group. The column labelled ‘Q< 0.9’ lists the number of atoms with occupancy less than 0.9.

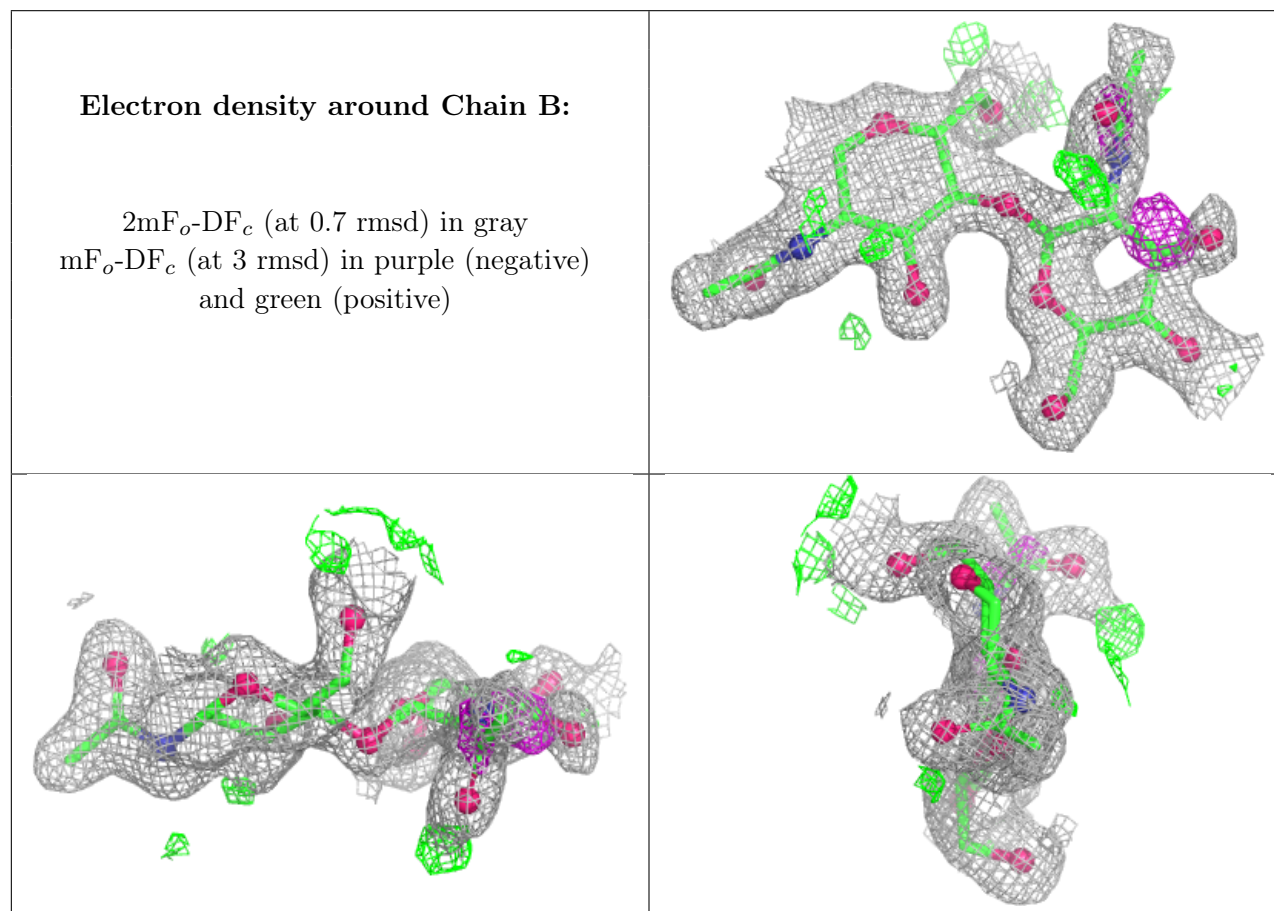
Mol	Type	Chain	Res	Atoms	RSCC	RSR	B-factors(Å ²)	Q<0.9
2	NAG	C	2	14/15	0.79	0.11	39,42,42,44	0
2	NAG	B	2	14/15	0.83	0.11	35,38,41,41	0
2	NAG	C	1	14/15	0.92	0.08	24,29,31,35	0

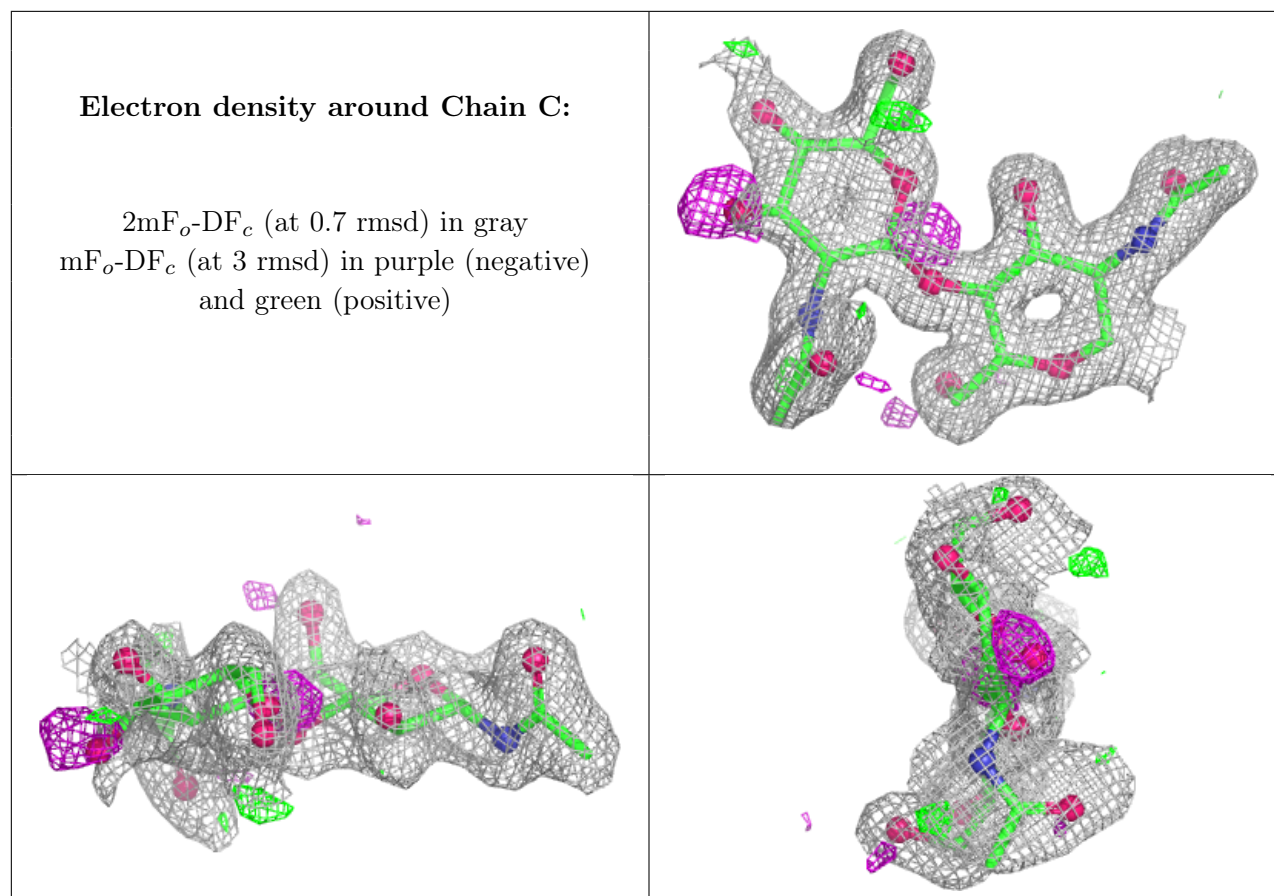
Continued on next page...

Continued from previous page...

Mol	Type	Chain	Res	Atoms	RSCC	RSR	B-factors(\AA^2)	Q<0.9
2	NAG	B	1	14/15	0.93	0.08	22,27,33,34	0

The following is a graphical depiction of the model fit to experimental electron density for oligosaccharide. Each fit is shown from different orientation to approximate a three-dimensional view.





6.4 Ligands ⓘ

In the following table, the Atoms column lists the number of modelled atoms in the group and the number defined in the chemical component dictionary. The B-factors column lists the minimum, median, 95th percentile and maximum values of B factors of atoms in the group. The column labelled 'Q< 0.9' lists the number of atoms with occupancy less than 0.9.

Mol	Type	Chain	Res	Atoms	RSCC	RSR	B-factors(\AA^2)	Q<0.9
8	ACT	A	935	4/4	0.76	0.19	53,53,53,53	0
8	ACT	A	934	4/4	0.81	0.15	52,52,52,53	0
6	NPO	A	911	10/10	0.85	0.16	53,53,54,54	0
8	ACT	A	933	4/4	0.85	0.14	38,38,39,39	0
6	NPO	A	912	10/10	0.87	0.10	23,25,27,28	0
6	NPO	A	913	10/10	0.90	0.10	31,31,32,32	0
7	PO4	A	950	5/5	0.93	0.12	23,27,31,33	0
9	NA	A	941	1/1	0.96	0.11	59,59,59,59	0
4	MG	A	904[B]	1/1	1.00	0.06	14,14,14,14	1
5	CA	A	905	1/1	1.00	0.01	16,16,16,16	0
3	ZN	A	901	1/1	1.00	0.01	13,13,13,13	0
3	ZN	A	902	1/1	1.00	0.01	12,12,12,12	0
3	ZN	A	903[A]	1/1	1.00	0.07	14,14,14,14	1

6.5 Other polymers [i](#)

There are no such residues in this entry.