



Full wwPDB X-ray Structure Validation Report ⓘ

Mar 22, 2025 – 09:01 AM EDT

PDB ID : 1MCJ
Title : PRINCIPLES AND PITFALLS IN DESIGNING SITE DIRECTED PEPTIDE LIGANDS
Authors : Edmundson, A.B.; Harris, D.L.; Fan, Z.-C.; Guddat, L.W.
Deposited on : 1993-02-25
Resolution : 2.70 Å(reported)

This is a Full wwPDB X-ray Structure Validation Report for a publicly released PDB entry.

We welcome your comments at validation@mail.wwpdb.org

A user guide is available at

<https://www.wwpdb.org/validation/2017/XrayValidationReportHelp>

with specific help available everywhere you see the ⓘ symbol.

The types of validation reports are described at

<http://www.wwpdb.org/validation/2017/FAQs#types>.

The following versions of software and data (see [references ⓘ](#)) were used in the production of this report:

MolProbity	:	4.02b-467
Mogul	:	2022.3.0, CSD as543be (2022)
Xtriage (Phenix)	:	NOT EXECUTED
EDS	:	NOT EXECUTED
Percentile statistics	:	20231227.v01 (using entries in the PDB archive December 27th 2023)
Ideal geometry (proteins)	:	Engh & Huber (2001)
Ideal geometry (DNA, RNA)	:	Parkinson et al. (1996)
Validation Pipeline (wwPDB-VP)	:	2.41.4

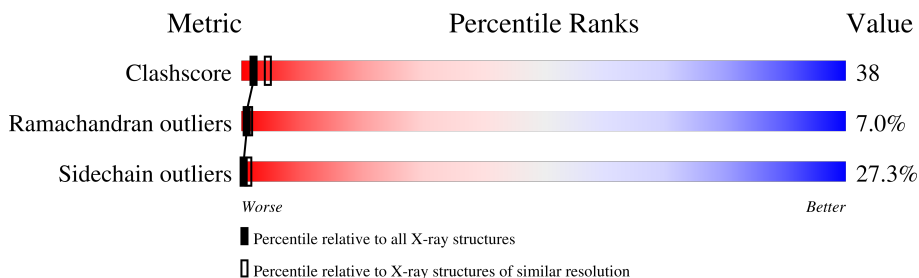
1 Overall quality at a glance

The following experimental techniques were used to determine the structure:

X-RAY DIFFRACTION

The reported resolution of this entry is 2.70 Å.

Percentile scores (ranging between 0-100) for global validation metrics of the entry are shown in the following graphic. The table shows the number of entries on which the scores are based.



Metric	Whole archive (#Entries)	Similar resolution (#Entries, resolution range(Å))
Clashscore	180529	3684 (2.70-2.70)
Ramachandran outliers	177936	3633 (2.70-2.70)
Sidechain outliers	177891	3633 (2.70-2.70)

The table below summarises the geometric issues observed across the polymeric chains and their fit to the electron density. The red, orange, yellow and green segments of the lower bar indicate the fraction of residues that contain outliers for ≥ 3 , 2, 1 and 0 types of geometric quality criteria respectively. A grey segment represents the fraction of residues that are not modelled. The numeric value for each fraction is indicated below the corresponding segment, with a dot representing fractions $\leq 5\%$.

Note EDS was not executed.

Mol	Chain	Length	Quality of chain
1	A	216	<div> <div>28%</div> <div>50%</div> <div>19%</div> <div>.</div> </div>
1	B	216	<div> <div>38%</div> <div>42%</div> <div>18%</div> <div>.</div> </div>
2	P	5	<div> <div>20%</div> <div>80%</div> </div>

The following table lists non-polymeric compounds, carbohydrate monomers and non-standard residues in protein, DNA, RNA chains that are outliers for geometric or electron-density-fit criteria:

Mol	Type	Chain	Res	Chirality	Geometry	Clashes	Electron density
3	ACE	A	0	-	-	X	-
4	DPN	P	5	-	-	X	-

2 Entry composition

There are 6 unique types of molecules in this entry. The entry contains 3242 atoms, of which 0 are hydrogens and 0 are deuteriums.

In the tables below, the ZeroOcc column contains the number of atoms modelled with zero occupancy, the AltConf column contains the number of residues with at least one atom in alternate conformation and the Trace column contains the number of residues modelled with at most 2 atoms.

- Molecule 1 is a protein called IMMUNOGLOBULIN LAMBDA DIMER MCG (LIGHT CHAIN).

Mol	Chain	Residues	Atoms					ZeroOcc	AltConf	Trace
1	A	216	Total	C	N	O	S	0	0	0
			1605	1000	266	334	5			
1	B	216	Total	C	N	O	S	0	0	0
			1605	1000	266	334	5			

There are 44 discrepancies between the modelled and reference sequences:

Chain	Residue	Modelled	Actual	Comment	Reference
A	20	ILE	PHE	conflict	PIR S14675
A	23	THR	SER	conflict	PIR S14675
A	29	VAL	ILE	conflict	PIR S14675
A	31	GLY	ASN	conflict	PIR S14675
A	39	GLN	ARG	conflict	PIR S14675
A	42	ALA	PRO	conflict	PIR S14675
A	48	VAL	LEU	conflict	PIR S14675
A	49	ILE	MET	conflict	PIR S14675
A	54	ASN	THR	conflict	PIR S14675
A	62	ASP	ASN	conflict	PIR S14675
A	94	GLU	ALA	conflict	PIR S14675
A	97	ASP	ASN	conflict	PIR S14675
A	98	ASN	SER	conflict	PIR S14675
A	99	PHE	LEU	conflict	PIR S14675
A	100	VAL	ILE	conflict	PIR S14675
A	103	THR	GLY	conflict	PIR S14675
A	106	LYS	ARG	conflict	PIR S14675
A	107	VAL	LEU	conflict	PIR S14675
A	116	ASN	ALA	conflict	PIR S14675
A	118	THR	SER	conflict	PIR S14675
A	156	GLY	SER	conflict	PIR S14675
A	167	LYS	THR	conflict	PIR S14675
B	20	ILE	PHE	conflict	PIR S14675
B	23	THR	SER	conflict	PIR S14675

Continued on next page...

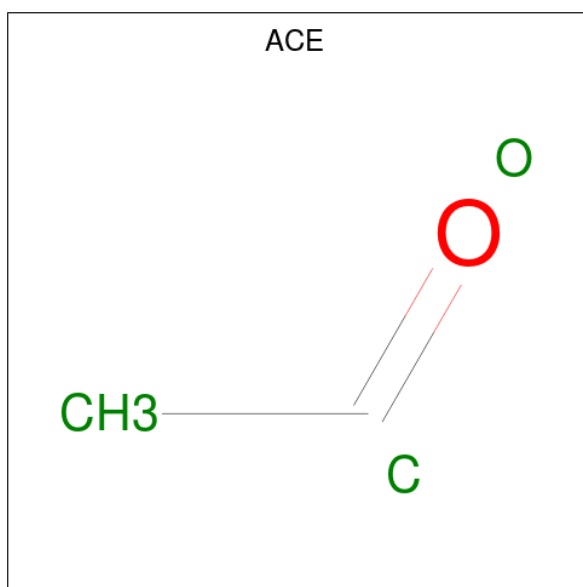
Continued from previous page...

Chain	Residue	Modelled	Actual	Comment	Reference
B	29	VAL	ILE	conflict	PIR S14675
B	31	GLY	ASN	conflict	PIR S14675
B	39	GLN	ARG	conflict	PIR S14675
B	42	ALA	PRO	conflict	PIR S14675
B	48	VAL	LEU	conflict	PIR S14675
B	49	ILE	MET	conflict	PIR S14675
B	54	ASN	THR	conflict	PIR S14675
B	62	ASP	ASN	conflict	PIR S14675
B	94	GLU	ALA	conflict	PIR S14675
B	97	ASP	ASN	conflict	PIR S14675
B	98	ASN	SER	conflict	PIR S14675
B	99	PHE	LEU	conflict	PIR S14675
B	100	VAL	ILE	conflict	PIR S14675
B	103	THR	GLY	conflict	PIR S14675
B	106	LYS	ARG	conflict	PIR S14675
B	107	VAL	LEU	conflict	PIR S14675
B	116	ASN	ALA	conflict	PIR S14675
B	118	THR	SER	conflict	PIR S14675
B	156	GLY	SER	conflict	PIR S14675
B	167	LYS	THR	conflict	PIR S14675

- Molecule 2 is a protein called PEPTIDE N-ACETYL-D-PHE-L-HIS-D-PRO-NH₂.

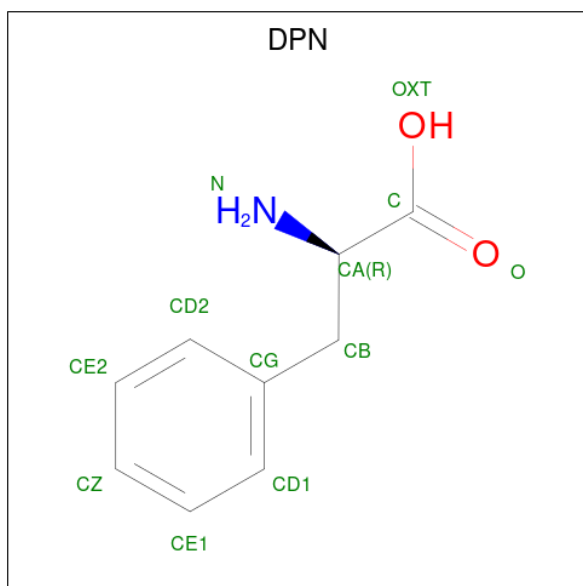
Mol	Chain	Residues	Atoms				ZeroOcc	AltConf	Trace
2	P	1	Total	C	N	O	0	0	0
			10	6	3	1			

- Molecule 3 is ACETYL GROUP (three-letter code: ACE) (formula: C₂H₄O).



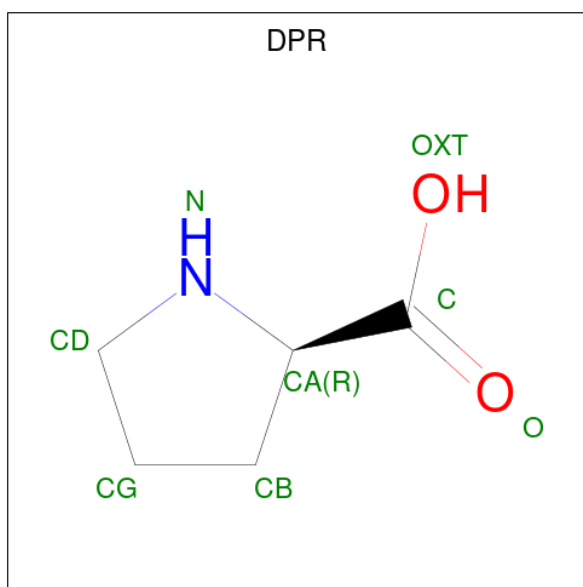
Mol	Chain	Residues	Atoms			ZeroOcc	AltConf
3	A	1	Total	C	O	0	0
			3	2	1		

- Molecule 4 is D-PHENYLALANINE (three-letter code: DPN) (formula: $C_9H_{11}NO_2$).



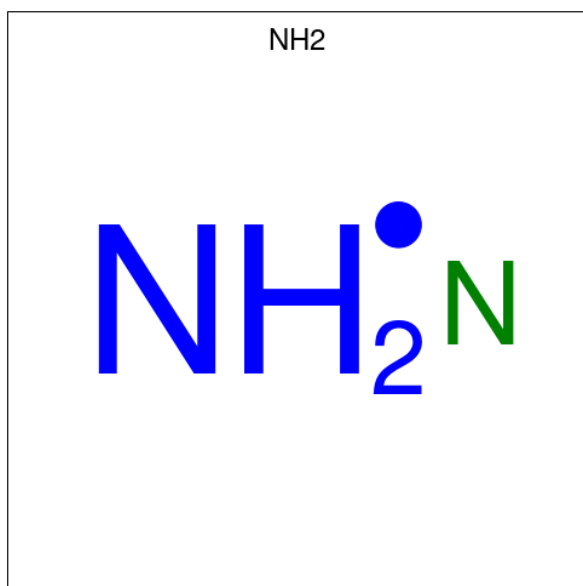
Mol	Chain	Residues	Atoms				ZeroOcc	AltConf
4	P	1	Total	C	N	O	0	0
			11	9	1	1		

- Molecule 5 is D-PROLINE (three-letter code: DPR) (formula: $C_5H_9NO_2$).



Mol	Chain	Residues	Atoms				ZeroOcc	AltConf
5	P	1	Total	C	N	O	0	0
			7	5	1	1		

- Molecule 6 is AMINO GROUP (three-letter code: NH2) (formula: H₂N).



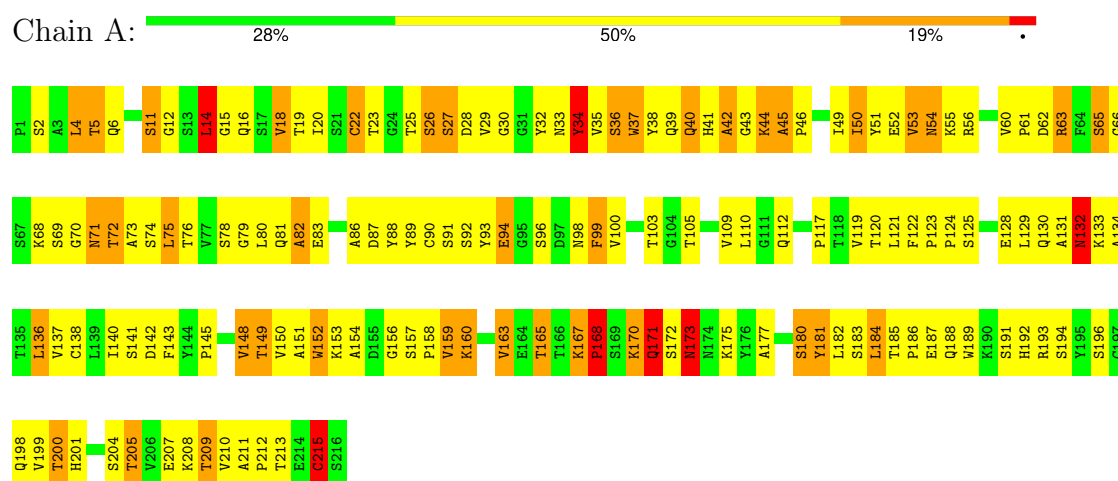
Mol	Chain	Residues	Atoms		ZeroOcc	AltConf
6	P	1	Total	N	0	0
			1	1		

3 Residue-property plots

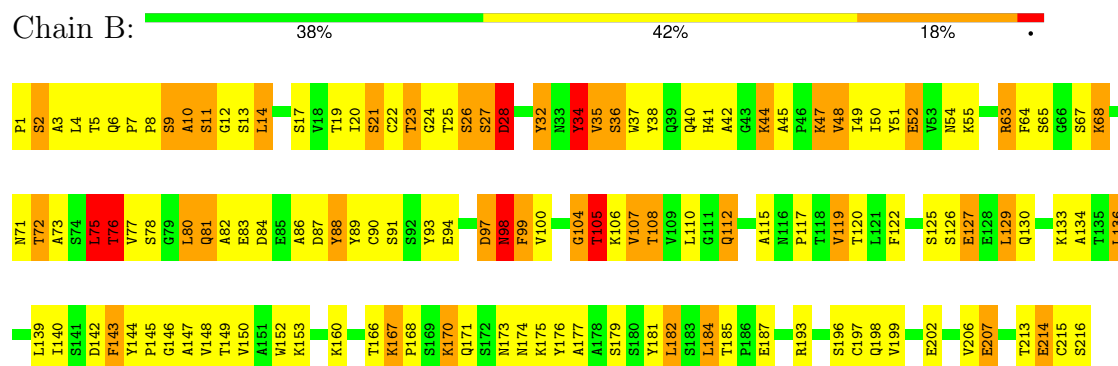
These plots are drawn for all protein, RNA, DNA and oligosaccharide chains in the entry. The first graphic for a chain summarises the proportions of the various outlier classes displayed in the second graphic. The second graphic shows the sequence view annotated by issues in geometry. Residues are color-coded according to the number of geometric quality criteria for which they contain at least one outlier: green = 0, yellow = 1, orange = 2 and red = 3 or more. Stretches of 2 or more consecutive residues without any outlier are shown as a green connector. Residues present in the sample, but not in the model, are shown in grey.

Note EDS was not executed.

• Molecule 1: IMMUNOGLOBULIN LAMBDA DIMER MCG (LIGHT CHAIN)



• Molecule 1: IMMUNOGLOBULIN LAMBDA DIMER MCG (LIGHT CHAIN)



• Molecule 2: PEPTIDE N-ACETYL-D-PHE-L-HIS-D-PRO-NH2



4 Data and refinement statistics

Xtriage (Phenix) and EDS were not executed - this section is therefore incomplete.

Property	Value	Source
Space group	P 31 2 1	Depositor
Cell constants a, b, c, α , β , γ	72.30 Å 72.30 Å 185.90 Å 90.00° 90.00° 120.00°	Depositor
Resolution (Å)	6.00 – 2.70	Depositor
% Data completeness (in resolution range)	(Not available) (6.00-2.70)	Depositor
R_{merge}	(Not available)	Depositor
R_{sym}	(Not available)	Depositor
Refinement program	PROLSQ, X-PLOR	Depositor
R, R_{free}	0.193 , (Not available)	Depositor
Estimated twinning fraction	No twinning to report.	Xtriage
Total number of atoms	3242	wwPDB-VP
Average B, all atoms (Å ²)	0.0	wwPDB-VP

5 Model quality

5.1 Standard geometry

Bond lengths and bond angles in the following residue types are not validated in this section: DPN, ACE, NH2, DPR

The Z score for a bond length (or angle) is the number of standard deviations the observed value is removed from the expected value. A bond length (or angle) with $|Z| > 5$ is considered an outlier worth inspection. RMSZ is the root-mean-square of all Z scores of the bond lengths (or angles).

Mol	Chain	Bond lengths		Bond angles	
		RMSZ	$\# Z > 5$	RMSZ	$\# Z > 5$
1	A	0.90	0/1644	1.43	11/2241 (0.5%)
1	B	0.88	1/1644 (0.1%)	1.48	15/2241 (0.7%)
2	P	0.59	0/10	1.45	0/12
All	All	0.89	1/3298 (0.0%)	1.45	26/4494 (0.6%)

Chiral center outliers are detected by calculating the chiral volume of a chiral center and verifying if the center is modelled as a planar moiety or with the opposite hand. A planarity outlier is detected by checking planarity of atoms in a peptide group, atoms in a mainchain group or atoms of a sidechain that are expected to be planar.

Mol	Chain	#Chirality outliers	#Planarity outliers
1	A	0	1

All (1) bond length outliers are listed below:

Mol	Chain	Res	Type	Atoms	Z	Observed(Å)	Ideal(Å)
1	B	108	THR	N-CA	5.81	1.57	1.46

All (26) bond angle outliers are listed below:

Mol	Chain	Res	Type	Atoms	Z	Observed(°)	Ideal(°)
1	B	34	TYR	CA-CB-CG	8.69	129.91	113.40
1	B	176	TYR	CA-CB-CG	8.40	129.35	113.40
1	A	34	TYR	CA-CB-CG	8.28	129.13	113.40
1	B	81	GLN	CA-CB-CG	8.04	131.10	113.40
1	A	187	GLU	CA-CB-CG	7.70	130.34	113.40
1	B	10	ALA	CA-C-N	7.59	133.89	117.20
1	A	63	ARG	NE-CZ-NH1	7.27	123.94	120.30
1	B	80	LEU	CA-CB-CG	7.13	131.71	115.30
1	B	193	ARG	NE-CZ-NH1	6.73	123.67	120.30

Continued on next page...

Continued from previous page...

Mol	Chain	Res	Type	Atoms	Z	Observed(°)	Ideal(°)
1	A	88	TYR	CA-CB-CG	6.71	126.15	113.40
1	B	107	VAL	C-N-CA	-6.37	105.79	121.70
1	B	136	LEU	CA-CB-CG	6.01	129.11	115.30
1	B	2	SER	N-CA-C	-5.70	95.62	111.00
1	A	152	TRP	CA-CB-CG	5.64	124.42	113.70
1	B	75	LEU	CA-CB-CG	5.60	128.18	115.30
1	A	136	LEU	CA-CB-CG	5.58	128.14	115.30
1	B	181	TYR	CA-CB-CG	5.52	123.88	113.40
1	B	104	GLY	N-CA-C	5.51	126.88	113.10
1	A	215	CYS	CA-CB-SG	5.48	123.87	114.00
1	A	168	PRO	N-CA-C	5.46	126.31	112.10
1	A	173	ASN	N-CA-C	-5.40	96.41	111.00
1	B	63	ARG	NE-CZ-NH1	5.36	122.98	120.30
1	A	99	PHE	CA-CB-CG	5.21	126.42	113.90
1	A	37	TRP	CA-CB-CG	5.09	123.37	113.70
1	B	207	GLU	CA-CB-CG	5.08	124.59	113.40
1	B	98	ASN	CA-CB-CG	5.04	124.50	113.40

There are no chirality outliers.

All (1) planarity outliers are listed below:

Mol	Chain	Res	Type	Group
1	A	167	LYS	Peptide

5.2 Too-close contacts [i](#)

In the following table, the Non-H and H(model) columns list the number of non-hydrogen atoms and hydrogen atoms in the chain respectively. The H(added) column lists the number of hydrogen atoms added and optimized by MolProbity. The Clashes column lists the number of clashes within the asymmetric unit, whereas Symm-Clashes lists symmetry-related clashes.

Mol	Chain	Non-H	H(model)	H(added)	Clashes	Symm-Clashes
1	A	1605	0	1540	133	0
1	B	1605	0	1540	112	0
2	P	10	0	6	5	0
3	A	3	0	3	2	0
4	P	11	0	9	8	0
5	P	7	0	7	1	0
6	P	1	0	0	0	0
All	All	3242	0	3105	238	0

The all-atom clashscore is defined as the number of clashes found per 1000 atoms (including hydrogen atoms). The all-atom clashscore for this structure is 38.

All (238) close contacts within the same asymmetric unit are listed below, sorted by their clash magnitude.

Atom-1	Atom-2	Interatomic distance (Å)	Clash overlap (Å)
1:A:171:GLN:OE1	1:A:177:ALA:HB2	1.77	0.84
1:B:4:LEU:HD12	1:B:22:CYS:HB3	1.61	0.83
1:B:9:SER:HB2	1:B:147:ALA:HB3	1.62	0.82
1:A:12:GLY:HA3	1:A:80:LEU:HD13	1.62	0.81
1:A:196:SER:HB3	1:A:209:THR:HG23	1.65	0.78
1:A:56:ARG:HH22	1:A:65:SER:HA	1.49	0.77
1:A:121:LEU:HD12	1:A:122:PHE:H	1.48	0.77
1:A:173:ASN:ND2	1:A:175:LYS:HD2	1.99	0.77
1:A:122:PHE:CD2	1:B:122:PHE:HB3	2.21	0.75
1:B:86:ALA:HB3	1:B:88:TYR:HE1	1.52	0.75
1:A:5:THR:HA	1:A:103:THR:OG1	1.86	0.74
1:B:86:ALA:HB3	1:B:88:TYR:CE1	2.23	0.74
1:B:171:GLN:HB2	1:B:173:ASN:OD1	1.88	0.73
1:A:19:THR:HG22	1:A:76:THR:OG1	1.88	0.73
1:A:42:ALA:HB2	1:A:170:LYS:HE2	1.72	0.71
1:B:17:SER:HA	1:B:77:VAL:O	1.91	0.70
3:A:0:ACE:O	4:P:5:DPN:HD1	1.92	0.69
1:A:22:CYS:HB3	1:A:73:ALA:HB3	1.74	0.69
1:B:10:ALA:O	1:B:11:SER:O	2.09	0.69
1:B:94:GLU:HB3	1:B:98:ASN:CB	2.22	0.69
1:A:12:GLY:HA3	1:A:80:LEU:CD1	2.21	0.69
1:A:134:ALA:HB3	1:A:184:LEU:O	1.94	0.68
1:A:36:SER:CB	1:A:51:TYR:HA	2.23	0.68
1:B:81:GLN:O	1:B:84:ASP:HB2	1.93	0.68
1:A:23:THR:HA	1:A:72:THR:HB	1.76	0.67
1:B:134:ALA:O	1:B:184:LEU:HD12	1.94	0.67
1:A:171:GLN:HB2	1:A:175:LYS:O	1.95	0.67
1:A:119:VAL:O	1:A:208:LYS:HE2	1.95	0.67
1:A:30:GLY:HA3	1:A:71:ASN:HD21	1.58	0.66
1:A:196:SER:HB2	1:A:207:GLU:OE1	1.96	0.66
1:B:34:TYR:CD1	1:B:52:GLU:HG2	2.31	0.65
1:A:12:GLY:O	1:A:109:VAL:HA	1.96	0.65
1:B:110:LEU:HA	1:B:144:TYR:OH	1.97	0.64
1:B:171:GLN:NE2	1:B:177:ALA:HB2	2.11	0.64
1:A:150:VAL:HA	1:A:198:GLN:O	1.98	0.64
1:A:173:ASN:HB2	1:A:175:LYS:NZ	2.14	0.63
1:B:11:SER:HB3	1:B:110:LEU:HD21	1.81	0.63

Continued on next page...

Continued from previous page...

Atom-1	Atom-2	Interatomic distance (Å)	Clash overlap (Å)
1:A:153:LYS:HB2	1:A:196:SER:OG	1.99	0.62
1:B:10:ALA:HB3	1:B:107:VAL:HA	1.79	0.62
1:A:25:THR:O	1:A:27:SER:N	2.31	0.62
1:A:37:TRP:HB2	1:A:50:ILE:HG22	1.80	0.62
1:B:37:TRP:HB2	1:B:50:ILE:HB	1.80	0.62
1:B:63:ARG:NH1	1:B:81:GLN:HG2	2.14	0.61
1:B:19:THR:O	1:B:20:ILE:HG13	2.00	0.61
1:B:22:CYS:O	1:B:72:THR:HA	2.00	0.61
1:A:14:LEU:O	1:A:14:LEU:HD23	2.01	0.61
1:B:198:GLN:HA	1:B:206:VAL:O	2.01	0.61
1:A:28:ASP:HA	1:A:93:TYR:O	2.00	0.60
1:A:37:TRP:O	1:A:49:ILE:HG13	2.02	0.60
1:A:36:SER:HB3	1:A:51:TYR:HA	1.82	0.60
1:A:94:GLU:HB3	1:A:98:ASN:OD1	2.01	0.60
1:A:148:VAL:HG12	1:A:201:HIS:HB2	1.84	0.60
1:B:94:GLU:HB3	1:B:98:ASN:HB2	1.83	0.60
1:B:143:PHE:HE1	1:B:177:ALA:HA	1.66	0.59
1:A:56:ARG:NH2	1:A:65:SER:HA	2.16	0.59
1:B:44:LYS:HZ3	1:B:45:ALA:N	2.00	0.59
1:B:7:PRO:O	1:B:105:THR:HG23	2.03	0.59
1:A:117:PRO:HD3	1:A:201:HIS:CD2	2.38	0.59
1:A:37:TRP:HA	1:A:89:TYR:O	2.03	0.59
1:B:5:THR:O	1:B:22:CYS:HA	2.03	0.58
1:B:20:ILE:HG22	1:B:37:TRP:CH2	2.37	0.58
1:B:127:GLU:O	1:B:130:GLN:HB2	2.04	0.58
1:A:117:PRO:HA	1:A:141:SER:O	2.04	0.58
1:A:63:ARG:HD2	1:A:78:SER:O	2.04	0.58
1:B:99:PHE:CE1	2:P:2:HIS:HB3	2.37	0.58
1:B:10:ALA:O	1:B:11:SER:C	2.42	0.58
1:B:115:ALA:HB3	1:B:144:TYR:N	2.19	0.58
1:A:117:PRO:HD3	1:A:201:HIS:HD2	1.68	0.58
1:B:40:GLN:O	1:B:86:ALA:HB1	2.04	0.57
1:A:20:ILE:O	1:A:74:SER:HA	2.04	0.57
1:A:18:VAL:O	1:A:76:THR:HA	2.05	0.57
1:A:148:VAL:HA	1:A:200:THR:O	2.04	0.57
1:B:136:LEU:HD12	1:B:184:LEU:HD11	1.86	0.57
1:A:52:GLU:O	1:A:54:ASN:N	2.38	0.57
1:B:171:GLN:HE21	1:B:177:ALA:HB2	1.69	0.57
1:A:33:ASN:O	1:A:53:VAL:HG23	2.05	0.56
1:A:36:SER:O	1:A:90:CYS:HA	2.04	0.56
1:A:52:GLU:HB2	1:A:55:LYS:HG3	1.86	0.56

Continued on next page...

Continued from previous page...

Atom-1	Atom-2	Interatomic distance (Å)	Clash overlap (Å)
1:B:99:PHE:HE1	2:P:2:HIS:HB3	1.70	0.56
1:A:4:LEU:HD21	1:A:92:SER:OG	2.06	0.56
1:A:14:LEU:HD12	1:A:82:ALA:HB2	1.88	0.56
1:A:39:GLN:O	1:A:46:PRO:HA	2.06	0.56
1:A:36:SER:HB3	1:A:50:ILE:O	2.06	0.55
1:A:186:PRO:C	1:A:188:GLN:H	2.10	0.55
1:A:41:HIS:O	1:A:43:GLY:N	2.40	0.55
1:A:173:ASN:C	1:A:175:LYS:H	2.10	0.55
1:B:213:THR:OG1	1:B:214:GLU:N	2.39	0.55
1:B:23:THR:HG22	1:B:71:ASN:OD1	2.06	0.55
1:A:125:SER:O	1:A:129:LEU:HD12	2.06	0.55
1:A:129:LEU:HD23	1:A:186:PRO:HG3	1.88	0.54
1:A:185:THR:O	1:A:188:GLN:HB2	2.07	0.54
1:A:63:ARG:HG2	1:A:78:SER:HB2	1.89	0.54
1:A:119:VAL:HG12	1:A:138:CYS:SG	2.47	0.54
1:B:38:TYR:CE2	1:B:48:VAL:HG22	2.42	0.54
1:A:157:SER:HB3	1:A:158:PRO:HD2	1.88	0.54
1:B:19:THR:OG1	1:B:76:THR:HG23	2.07	0.54
1:B:3:ALA:HA	1:B:25:THR:HG23	1.89	0.54
1:B:117:PRO:HB2	1:B:140:ILE:HG23	1.89	0.53
1:B:14:LEU:HD11	1:B:82:ALA:HA	1.91	0.53
1:A:35:VAL:HA	1:A:91:SER:O	2.08	0.53
1:A:123:PRO:HD3	1:A:210:VAL:HG11	1.91	0.53
1:B:21:SER:O	1:B:22:CYS:SG	2.66	0.53
1:B:4:LEU:HD23	1:B:100:VAL:HG13	1.90	0.53
1:A:99:PHE:CE2	4:P:5:DPN:HB2	2.44	0.52
1:B:34:TYR:CD1	4:P:5:DPN:HE2	2.45	0.52
1:A:15:GLY:O	1:A:79:GLY:HA2	2.10	0.52
1:B:36:SER:HB3	4:P:5:DPN:CE1	2.39	0.52
1:A:163:VAL:HA	1:A:181:TYR:O	2.10	0.52
1:A:6:GLN:HB3	1:A:105:THR:OG1	2.09	0.52
1:A:45:ALA:HA	1:B:89:TYR:HE2	1.75	0.51
1:B:52:GLU:H	4:P:5:DPN:HZ	1.74	0.51
1:A:65:SER:O	1:A:75:LEU:HA	2.09	0.51
1:A:99:PHE:CD1	3:A:0:ACE:H1	2.45	0.51
1:A:154:ALA:N	1:A:159:VAL:HG22	2.25	0.51
1:A:122:PHE:HD2	1:B:122:PHE:HB3	1.71	0.51
1:B:19:THR:HA	1:B:76:THR:HA	1.91	0.51
1:A:170:LYS:HG3	1:B:167:LYS:HZ3	1.76	0.51
1:B:119:VAL:HA	1:B:139:LEU:O	2.11	0.51
1:A:165:THR:HG23	1:A:180:SER:OG	2.11	0.50

Continued on next page...

Continued from previous page...

Atom-1	Atom-2	Interatomic distance (Å)	Clash overlap (Å)
1:A:132:ASN:O	1:A:132:ASN:ND2	2.44	0.50
1:A:44:LYS:O	1:A:45:ALA:CB	2.59	0.50
1:A:82:ALA:HB1	1:A:112:GLN:HE21	1.76	0.50
1:B:34:TYR:CE1	4:P:5:DPN:HE2	2.46	0.50
1:B:152:TRP:CE3	1:B:182:LEU:HD12	2.46	0.50
1:B:173:ASN:ND2	1:B:175:LYS:HG3	2.27	0.49
1:A:145:PRO:O	1:A:201:HIS:HE1	1.95	0.49
1:B:21:SER:HA	1:B:73:ALA:O	2.12	0.49
1:B:63:ARG:O	1:B:65:SER:N	2.44	0.49
1:B:32:TYR:CZ	1:B:93:TYR:HB3	2.47	0.49
1:B:150:VAL:HG13	1:B:199:VAL:HG12	1.94	0.49
1:A:32:TYR:O	1:A:68:LYS:NZ	2.45	0.49
1:A:167:LYS:HB3	1:A:168:PRO:CD	2.42	0.49
1:A:154:ALA:HB2	1:A:159:VAL:HG13	1.95	0.49
2:P:2:HIS:HB3	4:P:5:DPN:O	2.11	0.49
1:B:44:LYS:HZ1	1:B:45:ALA:HB3	1.78	0.48
1:A:45:ALA:HA	1:B:89:TYR:CE2	2.48	0.48
1:B:8:PRO:O	1:B:147:ALA:HB1	2.12	0.48
1:A:143:PHE:CE2	1:A:168:PRO:HG3	2.48	0.48
1:A:117:PRO:HB3	1:A:143:PHE:CD1	2.49	0.48
1:B:63:ARG:HH11	1:B:81:GLN:HG2	1.77	0.48
1:A:30:GLY:HA3	1:A:71:ASN:ND2	2.26	0.48
1:A:145:PRO:O	1:A:201:HIS:CE1	2.67	0.47
1:B:35:VAL:HB	1:B:91:SER:O	2.13	0.47
1:A:19:THR:HG22	1:A:76:THR:HG1	1.79	0.47
1:A:152:TRP:CZ2	1:A:180:SER:HB3	2.50	0.47
1:B:48:VAL:HG12	1:B:48:VAL:O	2.14	0.47
1:A:124:PRO:HD3	1:A:136:LEU:HG	1.96	0.47
1:A:215:CYS:SG	1:B:216:SER:N	2.88	0.47
1:A:26:SER:HA	1:A:29:VAL:O	2.15	0.47
1:A:173:ASN:HB2	1:A:175:LYS:HZ3	1.80	0.47
1:B:3:ALA:HB1	1:B:25:THR:N	2.29	0.47
1:B:2:SER:O	1:B:4:LEU:N	2.45	0.47
1:A:28:ASP:O	1:A:32:TYR:HB2	2.14	0.46
1:A:188:GLN:O	1:A:192:HIS:CD2	2.68	0.46
1:B:49:ILE:HD13	1:B:64:PHE:HD2	1.80	0.46
1:A:131:ALA:O	1:A:132:ASN:CB	2.63	0.46
1:B:170:LYS:HB2	1:B:170:LYS:NZ	2.30	0.46
1:A:34:TYR:OH	5:P:6:DPR:HB3	2.15	0.46
1:B:11:SER:OG	1:B:145:PRO:HG3	2.15	0.46
1:A:170:LYS:NZ	1:B:167:LYS:NZ	2.64	0.46

Continued on next page...

Continued from previous page...

Atom-1	Atom-2	Interatomic distance (Å)	Clash overlap (Å)
1:A:44:LYS:O	1:A:45:ALA:HB3	2.16	0.46
1:A:134:ALA:O	1:A:183:SER:HA	2.16	0.46
1:A:151:ALA:O	1:A:198:GLN:HB3	2.15	0.46
1:A:37:TRP:N	1:A:50:ILE:HG22	2.30	0.46
1:A:42:ALA:CB	1:A:170:LYS:HE2	2.43	0.46
1:B:37:TRP:CE2	1:B:75:LEU:HB2	2.51	0.46
1:B:99:PHE:HE1	2:P:2:HIS:CB	2.29	0.46
1:B:112:GLN:H	1:B:112:GLN:HG2	1.52	0.46
1:A:4:LEU:HD11	1:A:92:SER:HB3	1.99	0.45
1:A:40:GLN:O	1:A:86:ALA:HB1	2.17	0.45
1:B:6:GLN:HA	1:B:7:PRO:HD2	1.68	0.45
1:B:9:SER:CB	1:B:147:ALA:HB3	2.38	0.45
1:B:125:SER:O	1:B:129:LEU:HD22	2.16	0.45
1:A:154:ALA:CA	1:A:159:VAL:HG22	2.46	0.45
1:B:3:ALA:O	1:B:24:GLY:HA2	2.16	0.45
1:B:11:SER:HA	1:B:108:THR:HB	1.97	0.45
1:B:149:THR:O	1:B:199:VAL:HA	2.15	0.45
1:A:119:VAL:CG1	1:A:138:CYS:SG	3.04	0.45
1:A:121:LEU:HD12	1:A:137:VAL:O	2.17	0.45
1:B:120:THR:HG22	1:B:122:PHE:CE1	2.52	0.45
1:B:51:TYR:CZ	1:B:55:LYS:HB3	2.52	0.45
1:B:143:PHE:HD1	1:B:143:PHE:H	1.65	0.45
1:B:11:SER:HA	1:B:108:THR:CA	2.47	0.44
1:A:143:PHE:HB2	1:A:201:HIS:NE2	2.31	0.44
1:B:213:THR:O	1:B:214:GLU:HB2	2.16	0.44
1:A:121:LEU:HD12	1:A:122:PHE:N	2.24	0.44
1:A:140:ILE:HG12	1:A:199:VAL:CG2	2.48	0.44
1:B:152:TRP:CD2	1:B:182:LEU:HD12	2.52	0.44
1:A:170:LYS:HZ3	1:B:167:LYS:NZ	2.15	0.44
1:A:171:GLN:HB3	1:A:172:SER:H	1.67	0.44
1:B:68:LYS:HA	1:B:73:ALA:HA	2.00	0.44
1:B:27:SER:O	1:B:28:ASP:HB3	2.18	0.44
1:A:28:ASP:HB2	1:A:92:SER:OG	2.18	0.43
1:B:6:GLN:HG2	1:B:22:CYS:SG	2.58	0.43
1:A:148:VAL:HG13	1:A:201:HIS:ND1	2.34	0.43
1:A:211:ALA:C	1:A:213:THR:H	2.22	0.43
1:B:6:GLN:HB3	1:B:105:THR:OG1	2.18	0.43
1:A:71:ASN:HD22	1:A:71:ASN:HA	1.47	0.43
1:B:11:SER:HB2	1:B:202:GLU:OE2	2.17	0.43
1:B:97:ASP:O	1:B:98:ASN:HB2	2.19	0.43
1:B:140:ILE:HD12	1:B:179:SER:HA	2.01	0.43

Continued on next page...

Continued from previous page...

Atom-1	Atom-2	Interatomic distance (Å)	Clash overlap (Å)
1:B:3:ALA:O	1:B:23:THR:O	2.37	0.43
1:B:51:TYR:CD1	1:B:55:LYS:O	2.71	0.43
1:B:51:TYR:HB2	4:P:5:DPN:CZ	2.49	0.43
1:B:153:LYS:HB2	1:B:196:SER:OG	2.18	0.43
1:A:132:ASN:O	1:A:186:PRO:HD3	2.18	0.42
1:B:146:GLY:O	1:B:168:PRO:HG2	2.19	0.42
1:A:11:SER:O	1:A:18:VAL:HG23	2.19	0.42
1:A:199:VAL:O	1:A:205:THR:HA	2.18	0.42
1:A:60:VAL:HA	1:A:61:PRO:HD3	1.87	0.42
1:A:165:THR:HB	1:A:167:LYS:HE3	2.02	0.42
1:A:51:TYR:CD2	1:B:99:PHE:HZ	2.38	0.42
1:B:1:PRO:HG2	1:B:100:VAL:HG21	2.00	0.42
1:B:11:SER:N	1:B:108:THR:H	2.18	0.42
1:B:32:TYR:OH	1:B:93:TYR:HB3	2.19	0.42
1:A:32:TYR:CZ	1:A:94:GLU:O	2.73	0.42
1:B:12:GLY:N	1:B:108:THR:O	2.50	0.42
1:A:63:ARG:HD2	1:A:78:SER:C	2.40	0.41
1:B:44:LYS:HZ3	1:B:44:LYS:HB3	1.85	0.41
1:A:4:LEU:HD12	1:A:22:CYS:SG	2.60	0.41
1:A:143:PHE:CZ	1:A:168:PRO:HG3	2.56	0.41
1:B:11:SER:CB	1:B:110:LEU:HD21	2.50	0.41
1:A:34:TYR:CD1	2:P:2:HIS:CE1	3.08	0.41
1:A:35:VAL:HG23	1:A:91:SER:O	2.20	0.41
1:A:131:ALA:O	1:A:132:ASN:HB2	2.20	0.41
1:B:173:ASN:O	1:B:174:ASN:HB2	2.19	0.41
1:B:38:TYR:HB2	1:B:89:TYR:HB2	2.01	0.41
1:A:82:ALA:HB1	1:A:112:GLN:NE2	2.36	0.41
1:A:61:PRO:O	1:A:63:ARG:N	2.54	0.41
1:A:66:GLY:HA2	1:A:74:SER:O	2.21	0.41
1:A:149:THR:O	1:A:199:VAL:HA	2.20	0.41
1:A:82:ALA:HB1	1:A:112:GLN:HG2	2.03	0.40
1:A:200:THR:HA	1:A:204:SER:O	2.20	0.40
1:B:197:CYS:O	1:B:207:GLU:HA	2.22	0.40
1:A:173:ASN:C	1:A:175:LYS:N	2.74	0.40
1:B:19:THR:HG23	1:B:75:LEU:O	2.21	0.40
1:A:160:LYS:HB2	1:A:160:LYS:HE2	1.63	0.40
1:B:47:LYS:HE3	1:B:47:LYS:HB3	1.86	0.40

There are no symmetry-related clashes.

5.3 Torsion angles

5.3.1 Protein backbone

In the following table, the Percentiles column shows the percent Ramachandran outliers of the chain as a percentile score with respect to all X-ray entries followed by that with respect to entries of similar resolution.

The Analysed column shows the number of residues for which the backbone conformation was analysed, and the total number of residues.

Mol	Chain	Analysed	Favoured	Allowed	Outliers	Percentiles	
1	A	214/216 (99%)	163 (76%)	35 (16%)	16 (8%)	1	1
1	B	214/216 (99%)	165 (77%)	35 (16%)	14 (6%)	1	1
All	All	428/432 (99%)	328 (77%)	70 (16%)	30 (7%)	1	1

All (30) Ramachandran outliers are listed below:

Mol	Chain	Res	Type
1	A	26	SER
1	A	42	ALA
1	A	62	ASP
1	A	132	ASN
1	A	171	GLN
1	B	11	SER
1	B	28	ASP
1	B	42	ALA
1	B	105	THR
1	B	214	GLU
1	A	53	VAL
1	A	82	ALA
1	A	173	ASN
1	B	27	SER
1	B	52	GLU
1	B	97	ASP
1	B	187	GLU
1	A	156	GLY
1	A	168	PRO
1	A	191	SER
1	B	104	GLY
1	A	14	LEU
1	A	27	SER
1	A	45	ALA
1	A	70	GLY

Continued on next page...

Continued from previous page...

Mol	Chain	Res	Type
1	B	26	SER
1	B	98	ASN
1	B	76	THR
1	A	212	PRO
1	B	48	VAL

5.3.2 Protein sidechains ⓘ

In the following table, the Percentiles column shows the percent sidechain outliers of the chain as a percentile score with respect to all X-ray entries followed by that with respect to entries of similar resolution.

The Analysed column shows the number of residues for which the sidechain conformation was analysed, and the total number of residues.

Mol	Chain	Analysed	Rotameric	Outliers	Percentiles	
1	A	181/181 (100%)	129 (71%)	52 (29%)	0	1
1	B	181/181 (100%)	135 (75%)	46 (25%)	0	1
2	P	1/3 (33%)	0	1 (100%)	0	0
All	All	363/365 (100%)	264 (73%)	99 (27%)	0	1

All (99) residues with a non-rotameric sidechain are listed below:

Mol	Chain	Res	Type
1	A	2	SER
1	A	4	LEU
1	A	5	THR
1	A	11	SER
1	A	14	LEU
1	A	16	GLN
1	A	18	VAL
1	A	22	CYS
1	A	34	TYR
1	A	36	SER
1	A	38	TYR
1	A	40	GLN
1	A	44	LYS
1	A	50	ILE
1	A	54	ASN
1	A	65	SER
1	A	69	SER

Continued on next page...

Continued from previous page...

Mol	Chain	Res	Type
1	A	71	ASN
1	A	72	THR
1	A	75	LEU
1	A	81	GLN
1	A	83	GLU
1	A	87	ASP
1	A	94	GLU
1	A	96	SER
1	A	100	VAL
1	A	110	LEU
1	A	120	THR
1	A	128	GLU
1	A	130	GLN
1	A	132	ASN
1	A	133	LYS
1	A	142	ASP
1	A	148	VAL
1	A	149	THR
1	A	159	VAL
1	A	160	LYS
1	A	163	VAL
1	A	165	THR
1	A	170	LYS
1	A	171	GLN
1	A	180	SER
1	A	181	TYR
1	A	182	LEU
1	A	184	LEU
1	A	189	TRP
1	A	193	ARG
1	A	194	SER
1	A	200	THR
1	A	205	THR
1	A	209	THR
1	A	215	CYS
1	B	9	SER
1	B	13	SER
1	B	14	LEU
1	B	21	SER
1	B	23	THR
1	B	26	SER
1	B	28	ASP

Continued on next page...

Continued from previous page...

Mol	Chain	Res	Type
1	B	32	TYR
1	B	34	TYR
1	B	35	VAL
1	B	36	SER
1	B	41	HIS
1	B	44	LYS
1	B	47	LYS
1	B	54	ASN
1	B	67	SER
1	B	68	LYS
1	B	72	THR
1	B	75	LEU
1	B	76	THR
1	B	78	SER
1	B	80	LEU
1	B	83	GLU
1	B	87	ASP
1	B	88	TYR
1	B	90	CYS
1	B	99	PHE
1	B	105	THR
1	B	106	LYS
1	B	112	GLN
1	B	119	VAL
1	B	126	SER
1	B	127	GLU
1	B	129	LEU
1	B	133	LYS
1	B	142	ASP
1	B	143	PHE
1	B	148	VAL
1	B	160	LYS
1	B	166	THR
1	B	167	LYS
1	B	170	LYS
1	B	182	LEU
1	B	184	LEU
1	B	185	THR
1	B	215	CYS
2	P	2	HIS

Sometimes sidechains can be flipped to improve hydrogen bonding and reduce clashes. All (6) such sidechains are listed below:

Mol	Chain	Res	Type
1	A	54	ASN
1	A	112	GLN
1	B	54	ASN
1	B	112	GLN
1	B	192	HIS
1	B	201	HIS

5.3.3 RNA ⓘ

There are no RNA molecules in this entry.

5.4 Non-standard residues in protein, DNA, RNA chains ⓘ

There are no non-standard protein/DNA/RNA residues in this entry.

5.5 Carbohydrates ⓘ

There are no oligosaccharides in this entry.

5.6 Ligand geometry ⓘ

Of 4 ligands modelled in this entry, 1 is modelled with single atom - leaving 3 for Mogul analysis.

In the following table, the Counts columns list the number of bonds (or angles) for which Mogul statistics could be retrieved, the number of bonds (or angles) that are observed in the model and the number of bonds (or angles) that are defined in the Chemical Component Dictionary. The Link column lists molecule types, if any, to which the group is linked. The Z score for a bond length (or angle) is the number of standard deviations the observed value is removed from the expected value. A bond length (or angle) with $|Z| > 2$ is considered an outlier worth inspection. RMSZ is the root-mean-square of all Z scores of the bond lengths (or angles).

Mol	Type	Chain	Res	Link	Bond lengths			Bond angles		
					Counts	RMSZ	$\# Z > 2$	Counts	RMSZ	$\# Z > 2$
4	DPN	P	5	-	10,11,12	0.82	0	8,13,15	0.67	0
5	DPR	P	6	-	6,7,8	0.98	0	7,8,10	0.97	0
3	ACE	A	0	-	1,2,2	1.04	0	0,1,1	-	-

In the following table, the Chirals column lists the number of chiral outliers, the number of chiral centers analysed, the number of these observed in the model and the number defined in the Chemical Component Dictionary. Similar counts are reported in the Torsion and Rings columns. '-' means no outliers of that kind were identified.

Mol	Type	Chain	Res	Link	Chirals	Torsions	Rings
4	DPN	P	5	-	-	3/5/6/8	0/1/1/1
5	DPR	P	6	-	-	0/0/9/11	0/1/1/1

There are no bond length outliers.

There are no bond angle outliers.

There are no chirality outliers.

All (3) torsion outliers are listed below:

Mol	Chain	Res	Type	Atoms
4	P	5	DPN	O-C-CA-CB
4	P	5	DPN	N-CA-CB-CG
4	P	5	DPN	C-CA-CB-CG

There are no ring outliers.

3 monomers are involved in 10 short contacts:

Mol	Chain	Res	Type	Clashes	Symm-Clashes
4	P	5	DPN	8	0
5	P	6	DPR	1	0
3	A	0	ACE	2	0

5.7 Other polymers [i](#)

There are no such residues in this entry.

5.8 Polymer linkage issues [i](#)

There are no chain breaks in this entry.

6 Fit of model and data

6.1 Protein, DNA and RNA chains

EDS was not executed - this section is therefore empty.

6.2 Non-standard residues in protein, DNA, RNA chains

EDS was not executed - this section is therefore empty.

6.3 Carbohydrates

EDS was not executed - this section is therefore empty.

6.4 Ligands

EDS was not executed - this section is therefore empty.

6.5 Other polymers

EDS was not executed - this section is therefore empty.