



Full wwPDB NMR Structure Validation Report ⓘ

Dec 24, 2024 – 08:06 PM EST

PDB ID : 2M47
BMRB ID : 18989
Title : Solution NMR structure of the Polyketide_cyc-like protein Cgl2372 from Corynebacterium glutamicum, Northeast Structural Genomics Consortium Target CgR160
Authors : Yang, Y.; Ramelot, T.A.; Lee, D.; Ciccocanti, C.; Sapin, A.; Janjua, H.; Nair, R.; Rost, B.; Acton, T.B.; Xiao, R.; Everett, J.K.; Montelione, G.T.; Kennedy, M.A.; Northeast Structural Genomics Consortium (NESG)
Deposited on : 2013-01-30

This is a Full wwPDB NMR Structure Validation Report for a publicly released PDB entry.

We welcome your comments at validation@mail.wwpdb.org

A user guide is available at

<https://www.wwpdb.org/validation/2017/NMRValidationReportHelp>

with specific help available everywhere you see the ⓘ symbol.

The types of validation reports are described at

<http://www.wwpdb.org/validation/2017/FAQs#types>.

The following versions of software and data (see [references ⓘ](#)) were used in the production of this report:

MolProbity : 4.02b-467
Percentile statistics : 20231227.v01 (using entries in the PDB archive December 27th 2023)
wwPDB-RCI : v_1n_11_5_13_A (Berjanski et al., 2005)
PANAV : Wang et al. (2010)
wwPDB-ShiftChecker : v1.2
BMRB Restraints Analysis : v1.2
Ideal geometry (proteins) : Engh & Huber (2001)
Ideal geometry (DNA, RNA) : Parkinson et al. (1996)
Validation Pipeline (wwPDB-VP) : 2.40

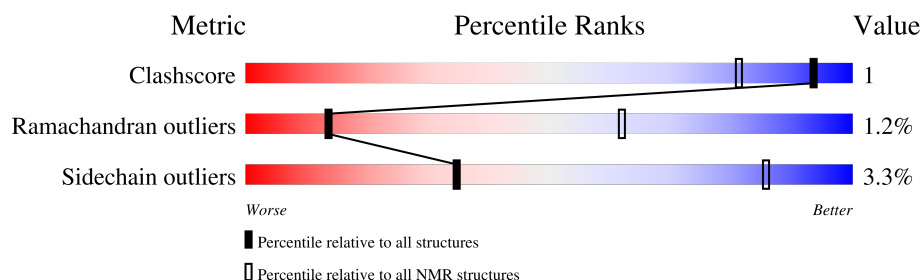
1 Overall quality at a glance

The following experimental techniques were used to determine the structure:

SOLUTION NMR

The overall completeness of chemical shifts assignment is 87%.

Percentile scores (ranging between 0-100) for global validation metrics of the entry are shown in the following graphic. The table shows the number of entries on which the scores are based.



Metric	Whole archive (#Entries)	NMR archive (#Entries)
Clashscore	210492	14027
Ramachandran outliers	207382	12486
Sidechain outliers	206894	12463

The table below summarises the geometric issues observed across the polymeric chains and their fit to the experimental data. The red, orange, yellow and green segments indicate the fraction of residues that contain outliers for ≥ 3 , 2, 1 and 0 types of geometric quality criteria. A cyan segment indicates the fraction of residues that are not part of the well-defined cores, and a grey segment represents the fraction of residues that are not modelled. The numeric value for each fraction is indicated below the corresponding segment, with a dot representing fractions $\leq 5\%$

Mol	Chain	Length	Quality of chain
1	A	163	

2 Ensemble composition and analysis

This entry contains 20 models. Model 8 is the overall representative, medoid model (most similar to other models). The authors have identified model 1 as representative, based on the following criterion: *lowest energy*.

The following residues are included in the computation of the global validation metrics.

Well-defined (core) protein residues			
Well-defined core	Residue range (total)	Backbone RMSD (Å)	Medoid model
1	A:5-A:25, A:40-A:56, A:66-A:156 (129)	1.34	8

Ill-defined regions of proteins are excluded from the global statistics.

Ligands and non-protein polymers are included in the analysis.

The models can be grouped into 6 clusters and 6 single-model clusters were found.

Cluster number	Models
1	7, 14, 18
2	2, 4, 6
3	1, 12
4	8, 9
5	3, 11
6	16, 17
Single-model clusters	5; 10; 13; 15; 19; 20

3 Entry composition

There is only 1 type of molecule in this entry. The entry contains 2599 atoms, of which 1272 are hydrogens and 0 are deuteriums.

- Molecule 1 is a protein called Uncharacterized protein Cgl2373.

Mol	Chain	Residues	Atoms						Trace
1	A	163	Total	C	H	N	O	S	0
			2599	842	1272	228	252	5	

There are 8 discrepancies between the modelled and reference sequences:

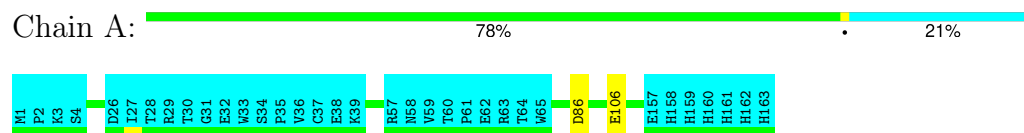
Chain	Residue	Modelled	Actual	Comment	Reference
A	156	LEU	-	expression tag	UNP Q8NN40
A	157	GLU	-	expression tag	UNP Q8NN40
A	158	HIS	-	expression tag	UNP Q8NN40
A	159	HIS	-	expression tag	UNP Q8NN40
A	160	HIS	-	expression tag	UNP Q8NN40
A	161	HIS	-	expression tag	UNP Q8NN40
A	162	HIS	-	expression tag	UNP Q8NN40
A	163	HIS	-	expression tag	UNP Q8NN40

4 Residue-property plots

4.1 Average score per residue in the NMR ensemble

These plots are provided for all protein, RNA, DNA and oligosaccharide chains in the entry. The first graphic is the same as shown in the summary in section 1 of this report. The second graphic shows the sequence where residues are colour-coded according to the number of geometric quality criteria for which they contain at least one outlier: green = 0, yellow = 1, orange = 2 and red = 3 or more. Stretches of 2 or more consecutive residues without any outliers are shown as green connectors. Residues which are classified as ill-defined in the NMR ensemble, are shown in cyan with an underline colour-coded according to the previous scheme. Residues which were present in the experimental sample, but not modelled in the final structure are shown in grey.

- Molecule 1: Uncharacterized protein Cgl2373

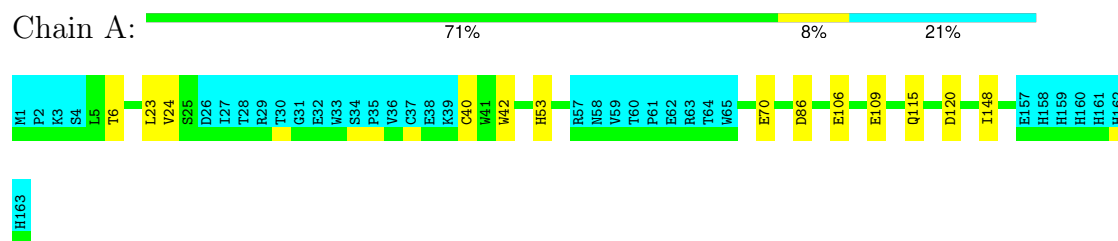


4.2 Scores per residue for each member of the ensemble

Colouring as in section 4.1 above.

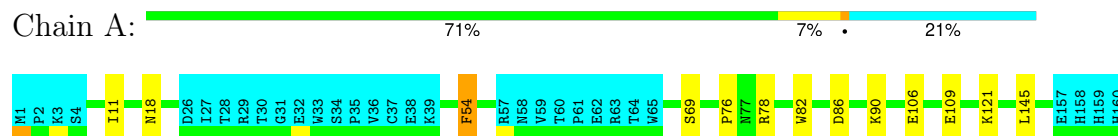
4.2.1 Score per residue for model 1

- Molecule 1: Uncharacterized protein Cgl2373



4.2.2 Score per residue for model 2

- Molecule 1: Uncharacterized protein Cgl2373



H161
H162
H163

4.2.3 Score per residue for model 3

- Molecule 1: Uncharacterized protein Cgl2373

Chain A:  75% 21%

M1 P2 K3 S4 D26 I27 T28 R29 T30 G31 E32 W33 S34 P35 V36 C37 E38 K39 W42 D43 E44 P48 R57 N58 V59 T60 P61 E62 R63 T64 W65 R78 E106 E157 H158 H159 H160 H161 H162 H163

4.2.4 Score per residue for model 4

- Molecule 1: Uncharacterized protein Cgl2373

Chain A:  74% 6% 21%

M1 P2 K3 S4 I11 L23 D26 I27 T28 R29 T30 G31 E32 W33 S34 P35 V36 C37 E38 K39 C40 R57 N58 V59 T60 P61 E62 R63 T64 W65 E70 D86 M95 E106 K121 L145 E157 H158 H159 H160 H161 H162 H163

4.2.5 Score per residue for model 5

- Molecule 1: Uncharacterized protein Cgl2373

Chain A:  69% 10% 21%

M1 P2 K3 S4 L5 E8 V20 D26 I27 T28 R29 T30 G31 E32 W33 S34 P35 V36 C37 E38 K39 C40 D43 F54 R57 N58 V59 T60 P61 E62 R63 T64 W65 R68 R78 T85 D86 T102 E106 F118 S126 I130 Q149 E153
E157 H158 H159 H160 H161 H162 H163

4.2.6 Score per residue for model 6

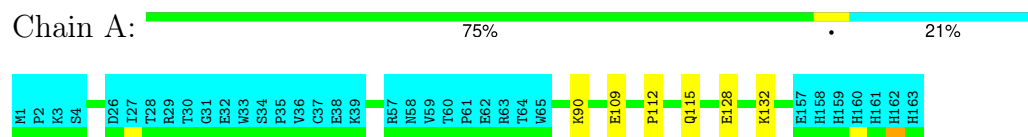
- Molecule 1: Uncharacterized protein Cgl2373

Chain A:  75% 21%

M1 P2 K3 S4 L5 D26 I27 T28 R29 T30 G31 E32 W33 S34 P35 V36 C37 E38 K39 R57 N58 V59 T60 P61 E62 R63 T64 W65 S83 D86 G87 E106 P112 K113 E157 H158 H159 H160 H161 H162 H163

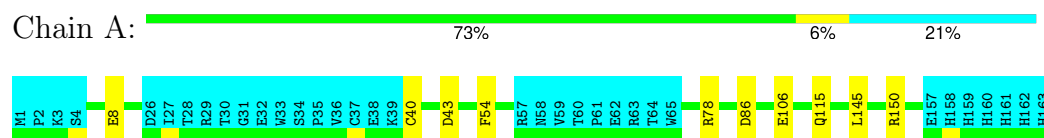
4.2.7 Score per residue for model 7

- Molecule 1: Uncharacterized protein Cgl2373



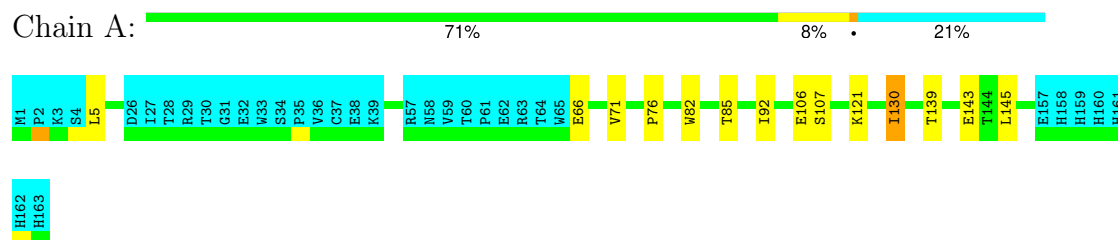
4.2.8 Score per residue for model 8 (medoid)

- Molecule 1: Uncharacterized protein Cgl2373



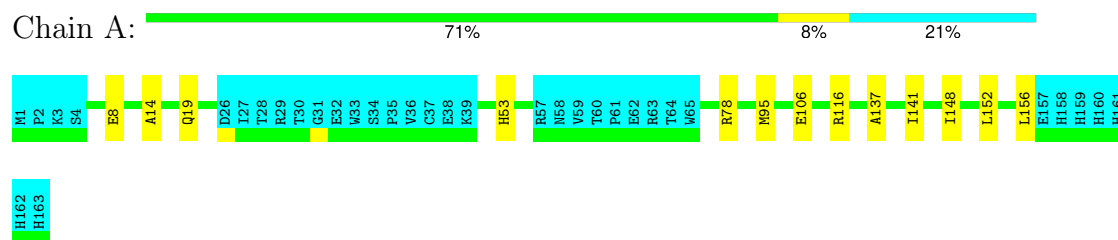
4.2.9 Score per residue for model 9

- Molecule 1: Uncharacterized protein Cgl2373



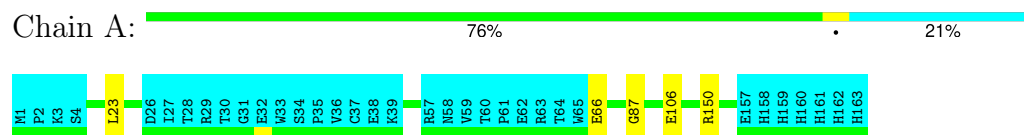
4.2.10 Score per residue for model 10

- Molecule 1: Uncharacterized protein Cgl2373



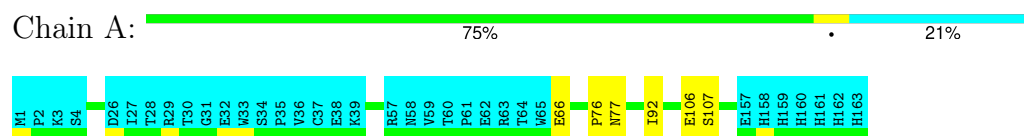
4.2.11 Score per residue for model 11

- Molecule 1: Uncharacterized protein Cgl2373



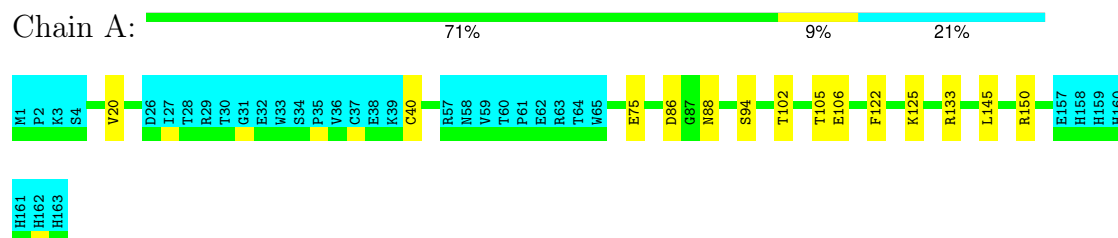
4.2.12 Score per residue for model 12

- Molecule 1: Uncharacterized protein Cgl2373



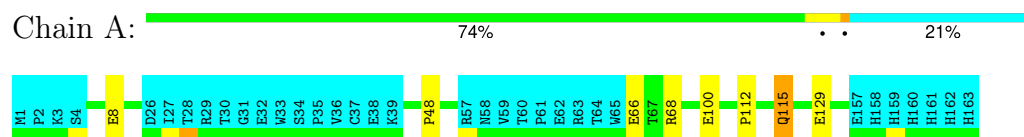
4.2.13 Score per residue for model 13

- Molecule 1: Uncharacterized protein Cgl2373



4.2.14 Score per residue for model 14

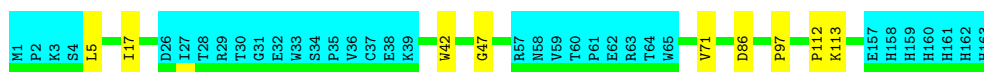
- Molecule 1: Uncharacterized protein Cgl2373



4.2.15 Score per residue for model 15

- Molecule 1: Uncharacterized protein Cgl2373

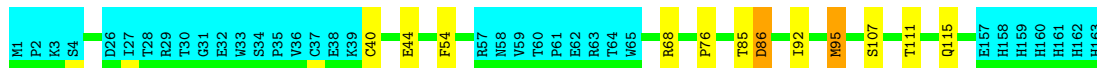




4.2.16 Score per residue for model 16

- Molecule 1: Uncharacterized protein Cgl2373

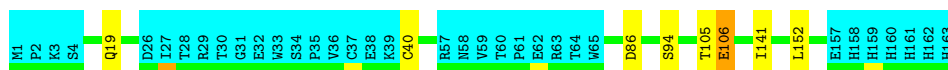
Chain A: 72% 6% 21%



4.2.17 Score per residue for model 17

- Molecule 1: Uncharacterized protein Cgl2373

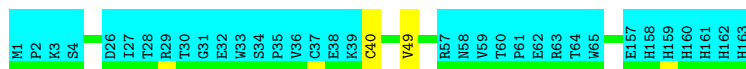
Chain A: 74% 2% 21%



4.2.18 Score per residue for model 18

- Molecule 1: Uncharacterized protein Cgl2373

Chain A: 78% 1% 21%



4.2.19 Score per residue for model 19

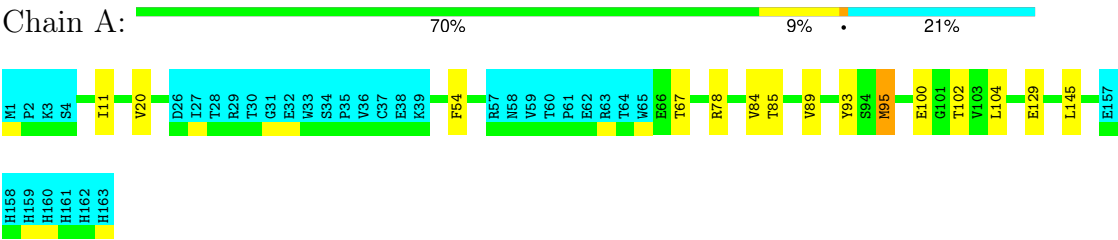
- Molecule 1: Uncharacterized protein Cgl2373

Chain A: 70% 9% 21%



4.2.20 Score per residue for model 20

- Molecule 1: Uncharacterized protein Cgl2373



5 Refinement protocol and experimental data overview

The models were refined using the following method: *simulated annealing*.

Of the 100 calculated structures, 20 were deposited, based on the following criterion: *structures with the lowest energy*.

The following table shows the software used for structure solution, optimisation and refinement.

Software name	Classification	Version
CNS	refinement	
CNS	structure solution	
CNS	geometry optimization	
CYANA	refinement	3.0
CYANA	geometry optimization	3.0
CYANA	structure solution	3.0
AutoStructure	refinement	2.1
TALOS+	geometry optimization	

The following table shows chemical shift validation statistics as aggregates over all chemical shift files. Detailed validation can be found in section 7 of this report.

Chemical shift file(s)	working_cs.cif
Number of chemical shift lists	1
Total number of shifts	1842
Number of shifts mapped to atoms	1842
Number of unparsed shifts	0
Number of shifts with mapping errors	0
Number of shifts with mapping warnings	0
Assignment completeness (well-defined parts)	87%

6 Model quality

6.1 Standard geometry

There are no covalent bond-length or bond-angle outliers.

There are no bond-length outliers.

There are no bond-angle outliers.

There are no chirality outliers.

There are no planarity outliers.

6.2 Too-close contacts

In the following table, the Non-H and H(model) columns list the number of non-hydrogen atoms and hydrogen atoms in each chain respectively. The H(added) column lists the number of hydrogen atoms added and optimized by MolProbity. The Clashes column lists the number of clashes averaged over the ensemble.

Mol	Chain	Non-H	H(model)	H(added)	Clashes
1	A	1034	998	996	2±2
All	All	20680	19960	19920	48

The all-atom clashscore is defined as the number of clashes found per 1000 atoms (including hydrogen atoms). The all-atom clashscore for this structure is 1.

All unique clashes are listed below, sorted by their clash magnitude.

Atom-1	Atom-2	Clash(Å)	Distance(Å)	Models	
				Worst	Total
1:A:17:ILE:HB	1:A:97:PRO:HB3	0.54	1.80	15	1
1:A:11:ILE:HG22	1:A:145:LEU:HD12	0.53	1.79	20	4
1:A:42:TRP:HB2	1:A:45:ASP:HB2	0.52	1.82	19	1
1:A:106:GLU:HB3	1:A:145:LEU:HD21	0.50	1.82	13	2
1:A:67:THR:HG22	1:A:85:THR:HG22	0.50	1.81	20	1
1:A:112:PRO:HA	1:A:115:GLN:HB3	0.49	1.84	7	2
1:A:92:ILE:HB	1:A:107:SER:HB2	0.48	1.85	16	2
1:A:95:MET:N	1:A:95:MET:SD	0.48	2.87	20	3
1:A:139:THR:O	1:A:143:GLU:HG2	0.47	2.09	9	1
1:A:43:ASP:HB2	1:A:54:PHE:HB3	0.46	1.87	5	2
1:A:5:LEU:HD21	1:A:130:ILE:HB	0.46	1.88	5	1
1:A:68:ARG:HH21	1:A:86:ASP:HB2	0.46	1.69	16	1
1:A:54:PHE:HB2	1:A:69:SER:HB2	0.46	1.87	2	1
1:A:24:VAL:HG12	1:A:148:ILE:HD13	0.45	1.87	1	1

Continued on next page...

Continued from previous page...

Atom-1	Atom-2	Clash(Å)	Distance(Å)	Models	
				Worst	Total
1:A:6:THR:HG22	1:A:109:GLU:HA	0.45	1.89	1	1
1:A:148:ILE:O	1:A:152:LEU:HG	0.44	2.12	10	1
1:A:83:SER:HB2	1:A:87:GLY:HA2	0.44	1.89	6	1
1:A:42:TRP:HB3	1:A:44:GLU:HG2	0.44	1.90	3	1
1:A:104:LEU:HD12	1:A:145:LEU:HD11	0.44	1.90	20	1
1:A:71:VAL:HA	1:A:82:TRP:HA	0.43	1.88	9	1
1:A:118:PHE:HB3	1:A:126:SER:HB3	0.43	1.91	5	1
1:A:137:ALA:O	1:A:141:ILE:HG12	0.43	2.13	10	1
1:A:106:GLU:HB3	1:A:141:ILE:HG23	0.42	1.92	17	1
1:A:53:HIS:HB3	1:A:70:GLU:HG3	0.42	1.91	1	1
1:A:94:SER:HB3	1:A:105:THR:HB	0.41	1.92	13	1
1:A:19:GLN:HB3	1:A:152:LEU:HD22	0.41	1.92	17	1
1:A:128:GLU:O	1:A:132:LYS:HE2	0.41	2.15	7	1
1:A:40:CYS:SG	1:A:56:GLY:HA2	0.41	2.55	19	1
1:A:20:VAL:HG21	1:A:102:THR:HB	0.41	1.92	5	3
1:A:122:PHE:HB3	1:A:125:LYS:HD3	0.41	1.91	13	1
1:A:71:VAL:HG11	1:A:74:ALA:HB2	0.41	1.93	19	1
1:A:84:VAL:HB	1:A:89:VAL:HB	0.41	1.93	20	1
1:A:90:LYS:HB2	1:A:109:GLU:HB2	0.41	1.93	7	1
1:A:92:ILE:HB	1:A:107:SER:HB3	0.41	1.93	9	1
1:A:14:ALA:O	1:A:156:LEU:HD11	0.40	2.17	10	1
1:A:149:GLN:O	1:A:153:GLU:HG2	0.40	2.17	5	1
1:A:94:SER:HB2	1:A:105:THR:HB	0.40	1.93	17	1

6.3 Torsion angles ⓘ

6.3.1 Protein backbone ⓘ

In the following table, the Percentiles column shows the percent Ramachandran outliers of the chain as a percentile score with respect to all PDB entries followed by that with respect to all NMR entries. The Analysed column shows the number of residues for which the backbone conformation was analysed and the total number of residues.

Mol	Chain	Analysed	Favoured	Allowed	Outliers	Percentiles	
1	A	129/163 (79%)	116±2 (90±2%)	12±2 (9±2%)	2±1 (1±1%)	14	62
All	All	2580/3260 (79%)	2316 (90%)	232 (9%)	32 (1%)	14	62

All 12 unique Ramachandran outliers are listed below. They are sorted by the frequency of occurrence in the ensemble.

Mol	Chain	Res	Type	Models (Total)
1	A	86	ASP	10
1	A	76	PRO	4
1	A	78	ARG	3
1	A	112	PRO	3
1	A	48	PRO	2
1	A	85	THR	2
1	A	113	LYS	2
1	A	5	LEU	2
1	A	87	GLY	1
1	A	47	GLY	1
1	A	71	VAL	1
1	A	49	VAL	1

6.3.2 Protein sidechains ⓘ

In the following table, the Percentiles column shows the percent sidechain outliers of the chain as a percentile score with respect to all PDB entries followed by that with respect to all NMR entries. The Analysed column shows the number of residues for which the sidechain conformation was analysed and the total number of residues.

Mol	Chain	Analysed	Rotameric	Outliers	Percentiles	
1	A	112/145 (77%)	108±2 (97±2%)	4±2 (3±2%)	35	86
All	All	2240/2900 (77%)	2165 (97%)	75 (3%)	35	86

All 35 unique residues with a non-rotameric sidechain are listed below. They are sorted by the frequency of occurrence in the ensemble.

Mol	Chain	Res	Type	Models (Total)
1	A	106	GLU	12
1	A	115	GLN	4
1	A	78	ARG	4
1	A	8	GLU	4
1	A	66	GLU	4
1	A	42	TRP	3
1	A	54	PHE	3
1	A	121	LYS	3
1	A	95	MET	3
1	A	150	ARG	3
1	A	23	LEU	2
1	A	82	TRP	2
1	A	109	GLU	2
1	A	68	ARG	2

Continued on next page...

Continued from previous page...

Mol	Chain	Res	Type	Models (Total)
1	A	116	ARG	2
1	A	100	GLU	2
1	A	129	GLU	2
1	A	120	ASP	1
1	A	18	ASN	1
1	A	90	LYS	1
1	A	43	ASP	1
1	A	70	GLU	1
1	A	5	LEU	1
1	A	85	THR	1
1	A	130	ILE	1
1	A	145	LEU	1
1	A	19	GLN	1
1	A	53	HIS	1
1	A	77	ASN	1
1	A	75	GLU	1
1	A	88	ASN	1
1	A	133	ARG	1
1	A	44	GLU	1
1	A	111	THR	1
1	A	93	TYR	1

6.3.3 RNA [i](#)

There are no RNA molecules in this entry.

6.4 Non-standard residues in protein, DNA, RNA chains [i](#)

There are no non-standard protein/DNA/RNA residues in this entry.

6.5 Carbohydrates [i](#)

There are no oligosaccharides in this entry.

6.6 Ligand geometry [i](#)

There are no ligands in this entry.

6.7 Other polymers [i](#)

There are no such molecules in this entry.

6.8 Polymer linkage issues [i](#)

There are no chain breaks in this entry.

7 Chemical shift validation

The completeness of assignment taking into account all chemical shift lists is 87% for the well-defined parts and 82% for the entire structure.

7.1 Chemical shift list 1

File name: working_cs.cif

Chemical shift list name: *assigned_chem_shift_list_1*

7.1.1 Bookkeeping

The following table shows the results of parsing the chemical shift list and reports the number of nuclei with statistically unusual chemical shifts.

Total number of shifts	1842
Number of shifts mapped to atoms	1842
Number of unparsed shifts	0
Number of shifts with mapping errors	0
Number of shifts with mapping warnings	0
Number of shift outliers (ShiftChecker)	15

7.1.2 Chemical shift referencing

The following table shows the suggested chemical shift referencing corrections.

Nucleus	# values	Correction \pm precision, ppm	Suggested action
$^{13}\text{C}_\alpha$	156	-0.37 ± 0.15	None needed (< 0.5 ppm)
$^{13}\text{C}_\beta$	146	-0.10 ± 0.14	None needed (< 0.5 ppm)
$^{13}\text{C}'$	142	0.09 ± 0.12	None needed (< 0.5 ppm)
^{15}N	142	-0.03 ± 0.31	None needed (< 0.5 ppm)

7.1.3 Completeness of resonance assignments

The following table shows the completeness of the chemical shift assignments for the well-defined regions of the structure. The overall completeness is 87%, i.e. 1528 atoms were assigned a chemical shift out of a possible 1762. 0 out of 19 assigned methyl groups (LEU and VAL) were assigned stereospecifically.

	Total	^1H	^{13}C	^{15}N
Backbone	622/642 (97%)	258/261 (99%)	245/258 (95%)	119/123 (97%)
Sidechain	827/956 (87%)	566/621 (91%)	256/305 (84%)	5/30 (17%)

Continued on next page...

Continued from previous page...

	Total	¹ H	¹³ C	¹⁵ N
Aromatic	79/164 (48%)	43/81 (53%)	29/74 (39%)	7/9 (78%)
Overall	1528/1762 (87%)	867/963 (90%)	530/637 (83%)	131/162 (81%)

The following table shows the completeness of the chemical shift assignments for the full structure. The overall completeness is 82%, i.e. 1841 atoms were assigned a chemical shift out of a possible 2245. 0 out of 21 assigned methyl groups (LEU and VAL) were assigned stereospecifically.

	Total	¹ H	¹³ C	¹⁵ N
Backbone	753/807 (93%)	313/327 (96%)	298/326 (91%)	142/154 (92%)
Sidechain	999/1202 (83%)	681/778 (88%)	313/382 (82%)	5/42 (12%)
Aromatic	89/236 (38%)	48/117 (41%)	32/96 (33%)	9/23 (39%)
Overall	1841/2245 (82%)	1042/1222 (85%)	643/804 (80%)	156/219 (71%)

7.1.4 Statistically unusual chemical shifts ⓘ

The following table lists the statistically unusual chemical shifts. These are statistical measures, and large deviations from the mean do not necessarily imply incorrect assignments. Molecules containing paramagnetic centres or hemes are expected to give rise to anomalous chemical shifts.

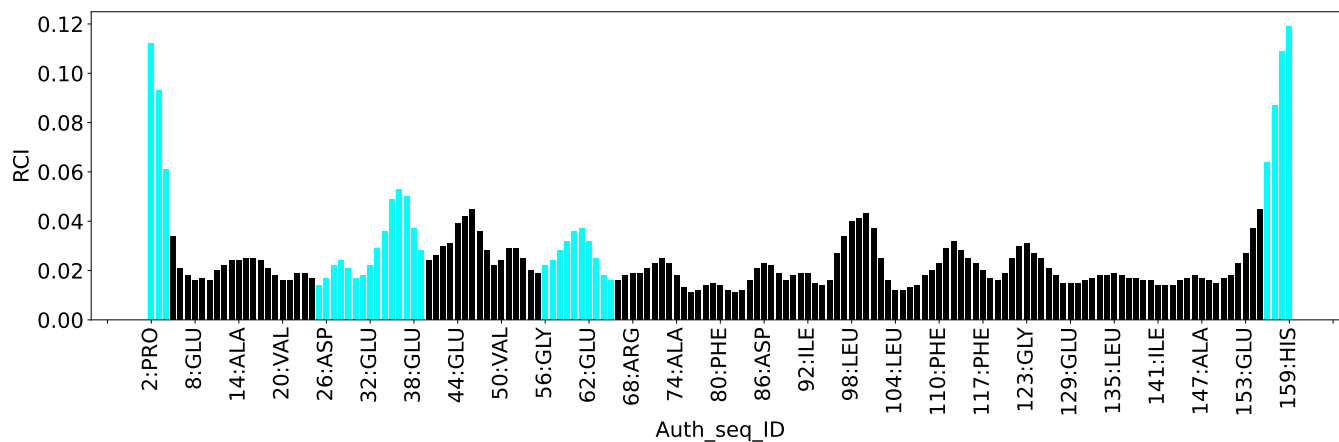
List Id	Chain	Res	Type	Atom	Shift, ppm	Expected range, ppm	Z-score
1	A	69	SER	HB3	1.21	2.49 – 5.20	-9.7
1	A	58	ASN	HB3	0.40	1.12 – 4.38	-7.2
1	A	55	THR	HB	1.89	2.57 – 5.77	-7.1
1	A	27	ILE	HG13	-1.38	-0.82 – 3.23	-6.4
1	A	58	ASN	HB2	0.90	1.27 – 4.34	-6.2
1	A	25	SER	HB3	2.22	2.49 – 5.20	-6.0
1	A	134	ARG	HG3	3.16	0.15 – 2.94	5.8
1	A	137	ALA	HB1	-0.05	0.14 – 2.58	-5.8
1	A	137	ALA	HB2	-0.05	0.14 – 2.58	-5.8
1	A	137	ALA	HB3	-0.05	0.14 – 2.58	-5.8
1	A	76	PRO	HA	2.62	2.78 – 6.00	-5.5
1	A	27	ILE	HD11	-0.83	-0.72 – 2.09	-5.4
1	A	27	ILE	HD12	-0.83	-0.72 – 2.09	-5.4
1	A	27	ILE	HD13	-0.83	-0.72 – 2.09	-5.4
1	A	121	LYS	HG3	0.02	0.04 – 2.67	-5.1

7.1.5 Random Coil Index (RCI) plots ⓘ

The image below reports *random coil index* values for the protein chains in the structure. The height of each bar gives a probability of a given residue to be disordered, as predicted from the available chemical shifts and the amino acid sequence. A value above 0.2 is an indication of significant predicted disorder. The colour of the bar shows whether the residue is in the well-

defined core (black) or in the ill-defined residue ranges (cyan), as described in section 2 on ensemble composition. If well-defined core and ill-defined regions are not identified then it is shown as gray bars.

Random coil index (RCI) for chain A:



8 NMR restraints analysis

8.1 Conformationally restricting restraints

The following table provides the summary of experimentally observed NMR restraints in different categories. Restraints are classified into different categories based on the sequence separation of the atoms involved.

Description	Value
Total distance restraints	1683
Intra-residue ($ i-j =0$)	384
Sequential ($ i-j =1$)	489
Medium range ($ i-j >1$ and $ i-j <5$)	238
Long range ($ i-j \geq 5$)	464
Inter-chain	0
Hydrogen bond restraints	108
Disulfide bond restraints	0
Total dihedral-angle restraints	214
Number of unmapped restraints	0
Number of restraints per residue	11.6
Number of long range restraints per residue ¹	3.2

¹Long range hydrogen bonds and disulfide bonds are counted as long range restraints while calculating the number of long range restraints per residue

8.2 Residual restraint violations

This section provides the overview of the restraint violations analysis. The violations are binned as small, medium and large violations based on its absolute value. Average number of violations per model is calculated by dividing the total number of violations in each bin by the size of the ensemble.

8.2.1 Average number of distance violations per model

Distance violations less than 0.1 Å are not included in the calculation.

Bins (Å)	Average number of violations per model	Max (Å)
0.1-0.2 (Small)	6.5	0.2
0.2-0.5 (Medium)	1.4	0.42
>0.5 (Large)	None	None

8.2.2 Average number of dihedral-angle violations per model [i](#)

Dihedral-angle violations less than 1° are not included in the calculation.

Bins (°)	Average number of violations per model	Max (°)
1.0-10.0 (Small)	17.8	8.12
10.0-20.0 (Medium)	None	None
>20.0 (Large)	None	None

9 Distance violation analysis [i](#)

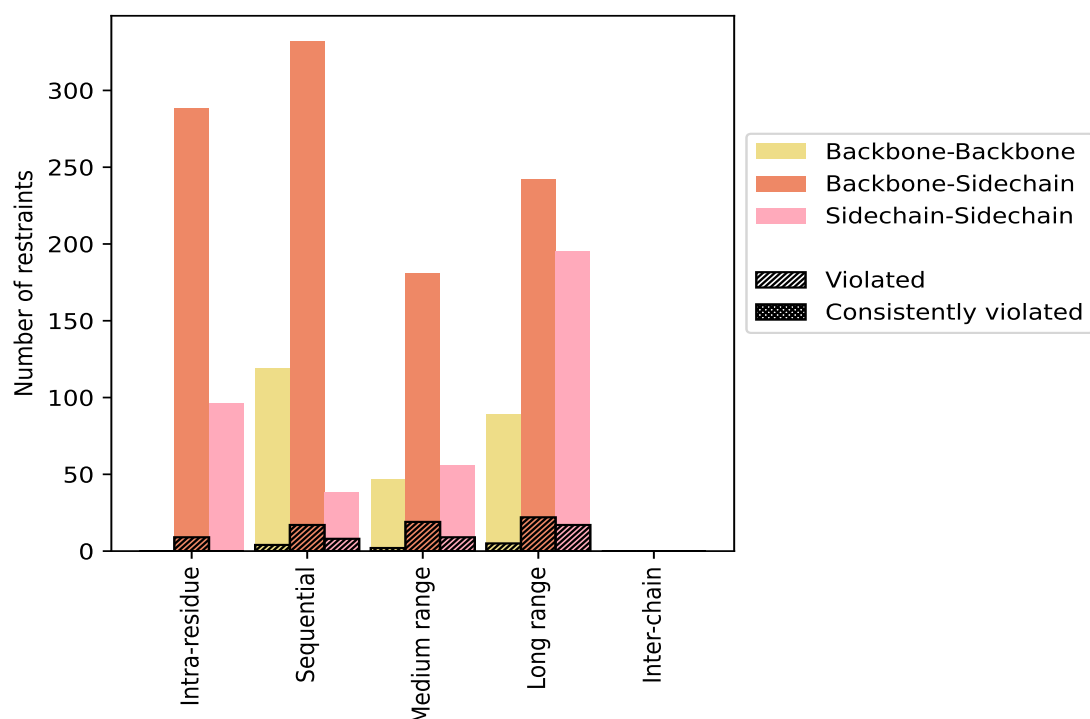
9.1 Summary of distance violations [i](#)

The following table shows the summary of distance violations in different restraint categories based on the sequence separation of the atoms involved. Each category is further sub-divided into three sub-categories based on the atoms involved. Violations less than 0.1 Å are not included in the statistics.

Restrains type	Count	% ¹	Violated ³			Consistently Violated ⁴		
			Count	% ²	% ¹	Count	% ²	% ¹
Intra-residue (i-j =0)	384	22.8	9	2.3	0.5	0	0.0	0.0
Backbone-Backbone	0	0.0	0	0.0	0.0	0	0.0	0.0
Backbone-Sidechain	288	17.1	9	3.1	0.5	0	0.0	0.0
Sidechain-Sidechain	96	5.7	0	0.0	0.0	0	0.0	0.0
Sequential (i-j =1)	489	29.1	29	5.9	1.7	0	0.0	0.0
Backbone-Backbone	119	7.1	4	3.4	0.2	0	0.0	0.0
Backbone-Sidechain	332	19.7	17	5.1	1.0	0	0.0	0.0
Sidechain-Sidechain	38	2.3	8	21.1	0.5	0	0.0	0.0
Medium range (i-j >1 & i-j <5)	238	14.1	24	10.1	1.4	0	0.0	0.0
Backbone-Backbone	47	2.8	2	4.3	0.1	0	0.0	0.0
Backbone-Sidechain	135	8.0	13	9.6	0.8	0	0.0	0.0
Sidechain-Sidechain	56	3.3	9	16.1	0.5	0	0.0	0.0
Long range (i-j ≥5)	464	27.6	38	8.2	2.3	0	0.0	0.0
Backbone-Backbone	89	5.3	5	5.6	0.3	0	0.0	0.0
Backbone-Sidechain	180	10.7	16	8.9	1.0	0	0.0	0.0
Sidechain-Sidechain	195	11.6	17	8.7	1.0	0	0.0	0.0
Inter-chain	0	0.0	0	0.0	0.0	0	0.0	0.0
Backbone-Backbone	0	0.0	0	0.0	0.0	0	0.0	0.0
Backbone-Sidechain	0	0.0	0	0.0	0.0	0	0.0	0.0
Sidechain-Sidechain	0	0.0	0	0.0	0.0	0	0.0	0.0
Hydrogen bond	108	6.4	12	11.1	0.7	0	0.0	0.0
Disulfide bond	0	0.0	0	0.0	0.0	0	0.0	0.0
Total	1683	100.0	112	6.7	6.7	0	0.0	0.0
Backbone-Backbone	255	15.2	11	4.3	0.7	0	0.0	0.0
Backbone-Sidechain	1043	62.0	67	6.4	4.0	0	0.0	0.0
Sidechain-Sidechain	385	22.9	34	8.8	2.0	0	0.0	0.0

¹ percentage calculated with respect to the total number of distance restraints, ² percentage calculated with respect to the number of restraints in a particular restraint category, ³ violated in at least one model, ⁴ violated in all the models

9.1.1 Bar chart : Distribution of distance restraints and violations [i](#)



Violated and consistently violated restraints are shown using different hatch patterns in their respective categories. The hydrogen bonds and disulfied bonds are counted in their appropriate category on the x-axis

9.2 Distance violation statistics for each model [i](#)

The following table provides the distance violation statistics for each model in the ensemble. Violations less than 0.1 Å are not included in the statistics.

Model ID	Number of violations						Mean (Å)	Max (Å)	SD ⁶ (Å)	Median (Å)
	IR ¹	SQ ²	MR ³	LR ⁴	IC ⁵	Total				
1	0	3	6	1	0	10	0.14	0.22	0.05	0.12
2	0	2	4	1	0	7	0.14	0.19	0.03	0.15
3	1	3	0	2	0	6	0.18	0.42	0.11	0.14
4	0	3	2	1	0	6	0.14	0.17	0.02	0.14
5	2	3	4	4	0	13	0.17	0.26	0.05	0.16
6	0	5	2	1	0	8	0.14	0.18	0.03	0.15
7	0	1	5	2	0	8	0.15	0.19	0.03	0.15
8	1	3	2	1	0	7	0.17	0.25	0.04	0.17
9	0	2	4	4	0	10	0.14	0.27	0.05	0.13
10	2	2	1	3	0	8	0.17	0.29	0.07	0.14

Continued on next page...

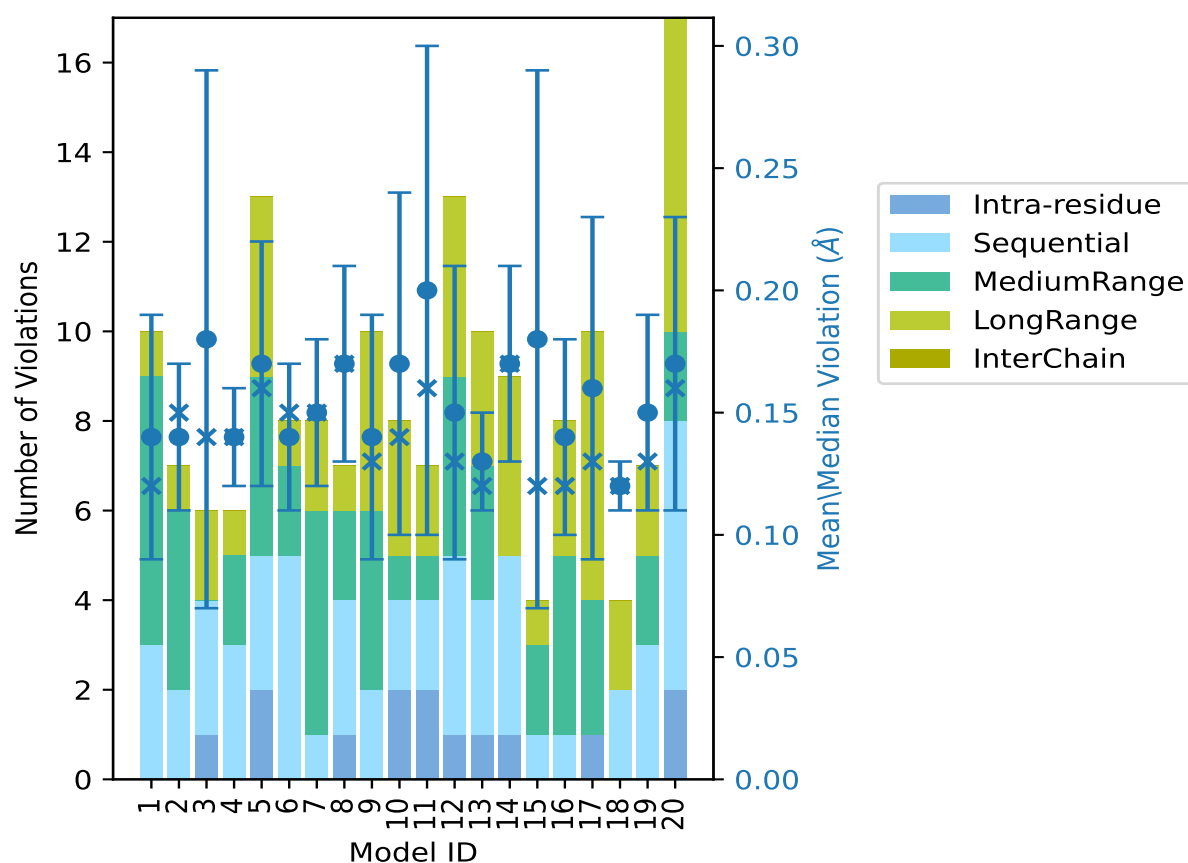
Continued from previous page...

Model ID	Number of violations						Mean (Å)	Max (Å)	SD ⁶ (Å)	Median (Å)
	IR ¹	SQ ²	MR ³	LR ⁴	IC ⁵	Total				
11	2	2	1	2	0	7	0.2	0.41	0.1	0.16
12	1	4	4	4	0	13	0.15	0.27	0.06	0.13
13	1	3	3	3	0	10	0.13	0.17	0.02	0.12
14	1	4	0	4	0	9	0.17	0.24	0.04	0.17
15	0	1	2	1	0	4	0.18	0.37	0.11	0.12
16	0	1	4	3	0	8	0.14	0.24	0.04	0.12
17	1	0	3	6	0	10	0.16	0.31	0.07	0.13
18	0	2	0	2	0	4	0.12	0.14	0.01	0.12
19	0	3	2	2	0	7	0.15	0.21	0.04	0.13
20	2	6	2	7	0	17	0.17	0.33	0.06	0.16

¹Intra-residue restraints, ²Sequential restraints, ³Medium range restraints, ⁴Long range restraints,

⁵Inter-chain restraints, ⁶Standard deviation

9.2.1 Bar graph : Distance Violation statistics for each model ⓘ



The mean(dot),median(x) and the standard deviation are shown in blue with respect to the y axis on the right

9.3 Distance violation statistics for the ensemble

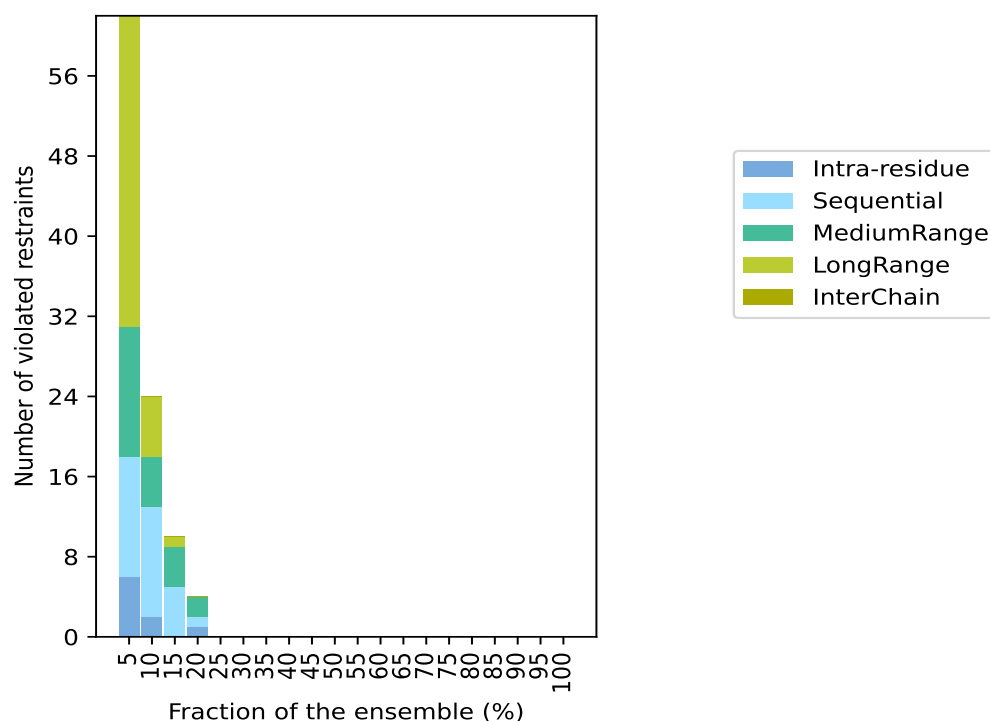
Violation analysis may find that some restraints are violated in few models and some are violated in most of models. The following table provides this information as number of violated restraints for a given fraction of the ensemble. In total, 1475(IR:375, SQ:460, MR:214, LR:426, IC:0) restraints are not violated in the ensemble.

Number of violated restraints						Fraction of the ensemble	
IR ¹	SQ ²	MR ³	LR ⁴	IC ⁵	Total	Count ⁶	%
6	12	13	31	0	62	1	5.0
2	11	5	6	0	24	2	10.0
0	5	4	1	0	10	3	15.0
1	1	2	0	0	4	4	20.0
0	0	0	0	0	0	5	25.0
0	0	0	0	0	0	6	30.0
0	0	0	0	0	0	7	35.0
0	0	0	0	0	0	8	40.0
0	0	0	0	0	0	9	45.0
0	0	0	0	0	0	10	50.0
0	0	0	0	0	0	11	55.0
0	0	0	0	0	0	12	60.0
0	0	0	0	0	0	13	65.0
0	0	0	0	0	0	14	70.0
0	0	0	0	0	0	15	75.0
0	0	0	0	0	0	16	80.0
0	0	0	0	0	0	17	85.0
0	0	0	0	0	0	18	90.0
0	0	0	0	0	0	19	95.0
0	0	0	0	0	0	20	100.0

¹Intra-residue restraints, ²Sequential restraints, ³Medium range restraints, ⁴Long range restraints,

⁵Inter-chain restraints, ⁶ Number of models with violations

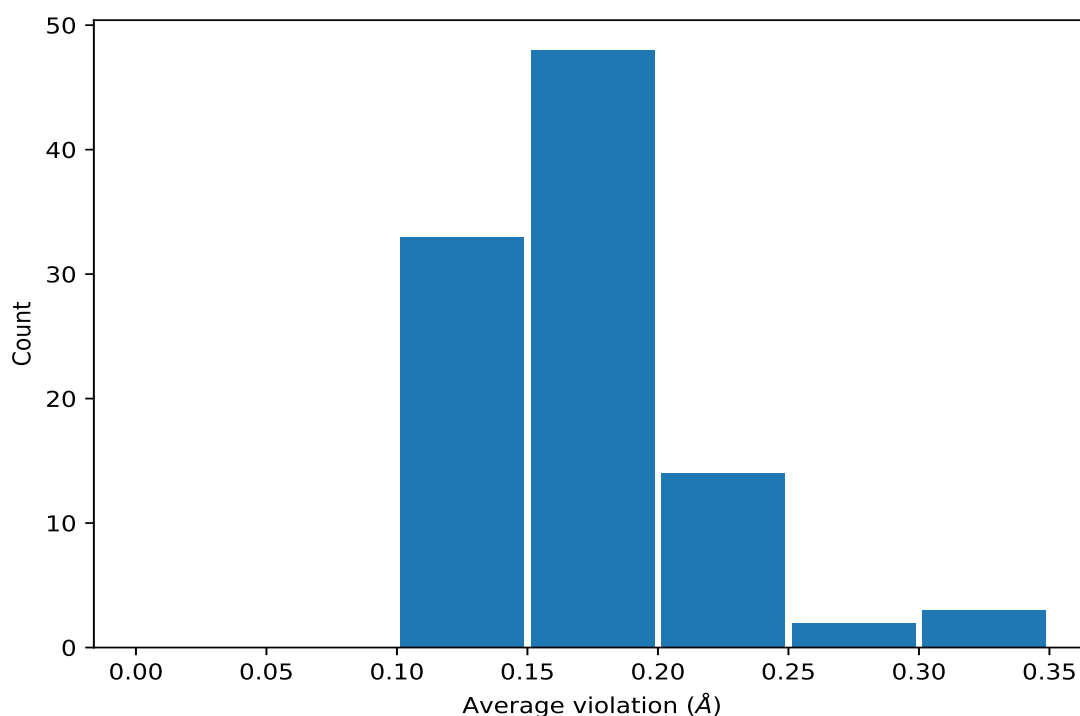
9.3.1 Bar graph : Distance violation statistics for the ensemble [i](#)



9.4 Most violated distance restraints in the ensemble [i](#)

9.4.1 Histogram : Distribution of mean distance violations [i](#)

The following histogram shows the distribution of the average value of the violation. The average is calculated for each restraint that is violated in more than one model over all the violated models in the ensemble



9.4.2 Table: Most violated distance restraints [i](#)

The following table provides the mean and the standard deviation of the violation for each restraint sorted by number of violated models and the mean value. The Key (restraint list ID, restraint ID) is the unique identifier for a given restraint. Rows with same key represent combinatorial or ambiguous restraints and are counted as a single restraint.

Key	Atom-1	Atom-2	Models ¹	Mean (Å)	SD ¹ (Å)	Median (Å)
(1,1137)	1:111:A:THR:H	1:111:A:THR:HG21	4	0.24	0.01	0.24
(1,1137)	1:111:A:THR:H	1:111:A:THR:HG22	4	0.24	0.01	0.24
(1,1137)	1:111:A:THR:H	1:111:A:THR:HG23	4	0.24	0.01	0.24
(1,488)	1:39:A:LYS:HG3	1:40:A:CYS:H	4	0.13	0.02	0.12
(1,272)	1:16:A:PRO:HG2	1:19:A:GLN:HE21	4	0.13	0.01	0.12
(1,916)	1:85:A:THR:HB	1:87:A:GLY:H	4	0.12	0.01	0.12
(1,1399)	1:142:A:PRO:HG2	1:143:A:GLU:H	3	0.19	0.05	0.2
(1,1399)	1:142:A:PRO:HG3	1:143:A:GLU:H	3	0.19	0.05	0.2
(1,1497)	1:150:A:ARG:HA	1:153:A:GLU:HG3	3	0.17	0.05	0.17
(1,957)	1:91:A:TRP:HA	1:92:A:ILE:HD11	3	0.17	0.02	0.18
(1,957)	1:91:A:TRP:HA	1:92:A:ILE:HD12	3	0.17	0.02	0.18
(1,957)	1:91:A:TRP:HA	1:92:A:ILE:HD13	3	0.17	0.02	0.18
(1,6)	1:3:A:LYS:HB2	1:4:A:SER:HB2	3	0.16	0.04	0.14
(1,6)	1:3:A:LYS:HB2	1:4:A:SER:HB3	3	0.16	0.04	0.14
(1,6)	1:3:A:LYS:HB3	1:4:A:SER:HB2	3	0.16	0.04	0.14
(1,6)	1:3:A:LYS:HB3	1:4:A:SER:HB3	3	0.16	0.04	0.14

Continued on next page...

Continued from previous page...

Key	Atom-1	Atom-2	Models ¹	Mean (Å)	SD ¹ (Å)	Median (Å)
(1,1273)	1:131:A:GLU:HG3	1:135:A:LEU:HD11	3	0.16	0.04	0.16
(1,1273)	1:131:A:GLU:HG3	1:135:A:LEU:HD12	3	0.16	0.04	0.16
(1,1273)	1:131:A:GLU:HG3	1:135:A:LEU:HD13	3	0.16	0.04	0.16
(1,10)	1:3:A:LYS:HG2	1:4:A:SER:HB3	3	0.15	0.02	0.16
(1,10)	1:3:A:LYS:HG3	1:4:A:SER:HB3	3	0.15	0.02	0.16
(1,409)	1:26:A:ASP:HA	1:28:A:THR:H	3	0.15	0.04	0.13
(1,1183)	1:122:A:PHE:H	1:123:A:GLY:H	3	0.14	0.02	0.13
(1,416)	1:27:A:ILE:HG12	1:42:A:TRP:HE1	3	0.13	0.03	0.12
(1,416)	1:27:A:ILE:HG13	1:42:A:TRP:HE1	3	0.13	0.03	0.12
(1,1239)	1:128:A:GLU:HG2	1:132:A:LYS:HE3	3	0.13	0.02	0.14
(1,1239)	1:128:A:GLU:HG3	1:132:A:LYS:HE3	3	0.13	0.02	0.14
(2,81)	1:130:A:ILE:O	1:134:A:ARG:H	3	0.11	0.0	0.11
(1,542)	1:50:A:VAL:H	1:50:A:VAL:HG21	2	0.3	0.01	0.3
(1,542)	1:50:A:VAL:H	1:50:A:VAL:HG22	2	0.3	0.01	0.3
(1,542)	1:50:A:VAL:H	1:50:A:VAL:HG23	2	0.3	0.01	0.3
(1,1299)	1:133:A:ARG:H	1:133:A:ARG:HG2	2	0.28	0.13	0.28
(1,1299)	1:133:A:ARG:H	1:133:A:ARG:HG3	2	0.28	0.13	0.28
(1,691)	1:63:A:ARG:HG3	1:64:A:THR:H	2	0.22	0.05	0.22
(1,730)	1:70:A:GLU:HG2	1:71:A:VAL:H	2	0.22	0.02	0.22
(1,648)	1:59:A:VAL:HG11	1:60:A:THR:HG21	2	0.2	0.04	0.2
(1,648)	1:59:A:VAL:HG11	1:60:A:THR:HG22	2	0.2	0.04	0.2
(1,648)	1:59:A:VAL:HG11	1:60:A:THR:HG23	2	0.2	0.04	0.2
(1,648)	1:59:A:VAL:HG12	1:60:A:THR:HG21	2	0.2	0.04	0.2
(1,648)	1:59:A:VAL:HG12	1:60:A:THR:HG22	2	0.2	0.04	0.2
(1,648)	1:59:A:VAL:HG12	1:60:A:THR:HG23	2	0.2	0.04	0.2
(1,648)	1:59:A:VAL:HG13	1:60:A:THR:HG21	2	0.2	0.04	0.2
(1,648)	1:59:A:VAL:HG13	1:60:A:THR:HG22	2	0.2	0.04	0.2
(1,648)	1:59:A:VAL:HG13	1:60:A:THR:HG23	2	0.2	0.04	0.2
(1,1157)	1:117:A:PHE:HD1	1:121:A:LYS:HE2	2	0.18	0.01	0.18
(1,1157)	1:117:A:PHE:HD1	1:121:A:LYS:HE3	2	0.18	0.01	0.18
(1,1157)	1:117:A:PHE:HD2	1:121:A:LYS:HE2	2	0.18	0.01	0.18
(1,1157)	1:117:A:PHE:HD2	1:121:A:LYS:HE3	2	0.18	0.01	0.18
(1,731)	1:70:A:GLU:HG3	1:71:A:VAL:H	2	0.16	0.02	0.16
(1,1007)	1:95:A:MET:HE1	1:104:A:LEU:HD11	2	0.16	0.02	0.16
(1,1007)	1:95:A:MET:HE1	1:104:A:LEU:HD12	2	0.16	0.02	0.16
(1,1007)	1:95:A:MET:HE1	1:104:A:LEU:HD13	2	0.16	0.02	0.16
(1,1007)	1:95:A:MET:HE2	1:104:A:LEU:HD11	2	0.16	0.02	0.16
(1,1007)	1:95:A:MET:HE2	1:104:A:LEU:HD12	2	0.16	0.02	0.16
(1,1007)	1:95:A:MET:HE2	1:104:A:LEU:HD13	2	0.16	0.02	0.16
(1,1007)	1:95:A:MET:HE3	1:104:A:LEU:HD11	2	0.16	0.02	0.16
(1,1007)	1:95:A:MET:HE3	1:104:A:LEU:HD12	2	0.16	0.02	0.16
(1,1007)	1:95:A:MET:HE3	1:104:A:LEU:HD13	2	0.16	0.02	0.16

Continued on next page...

Continued from previous page...

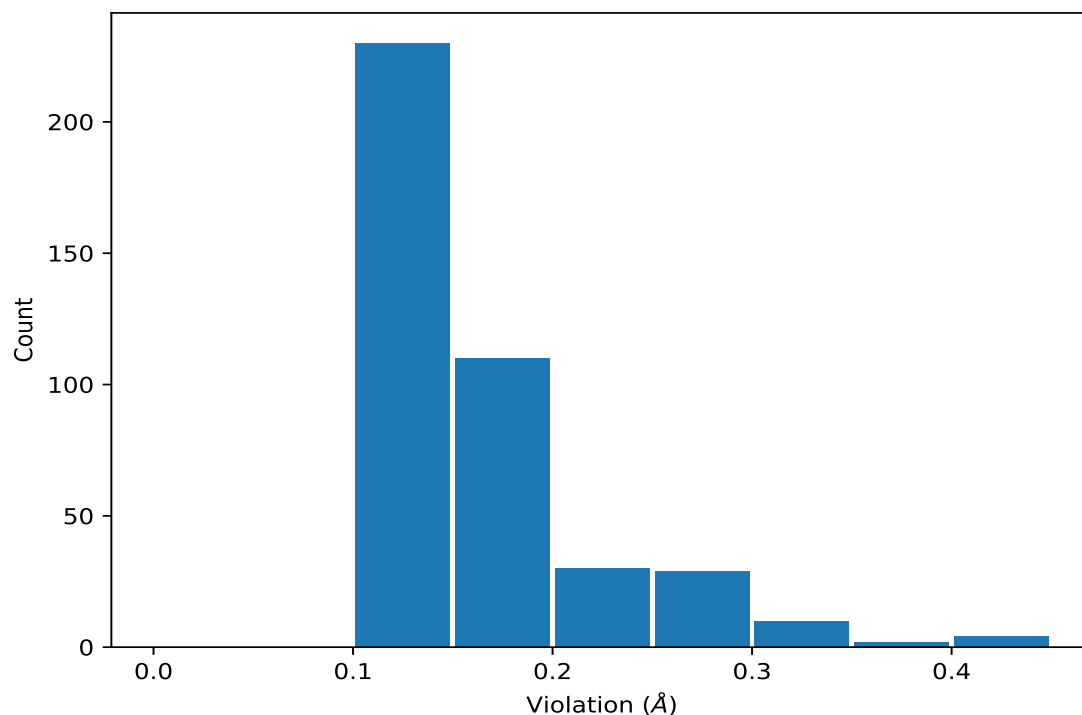
Key	Atom-1	Atom-2	Models ¹	Mean (Å)	SD ¹ (Å)	Median (Å)
(1,1151)	1:117:A:PHE:HA	1:120:A:ASP:HB3	2	0.16	0.06	0.16
(1,1549)	1:154:A:VAL:HG11	1:158:A:HIS:HB2	2	0.16	0.01	0.16
(1,1549)	1:154:A:VAL:HG11	1:158:A:HIS:HB3	2	0.16	0.01	0.16
(1,1549)	1:154:A:VAL:HG12	1:158:A:HIS:HB2	2	0.16	0.01	0.16
(1,1549)	1:154:A:VAL:HG12	1:158:A:HIS:HB3	2	0.16	0.01	0.16
(1,1549)	1:154:A:VAL:HG13	1:158:A:HIS:HB2	2	0.16	0.01	0.16
(1,1549)	1:154:A:VAL:HG13	1:158:A:HIS:HB3	2	0.16	0.01	0.16
(1,9)	1:3:A:LYS:HG2	1:4:A:SER:HB2	2	0.16	0.02	0.16
(1,9)	1:3:A:LYS:HG3	1:4:A:SER:HB2	2	0.16	0.02	0.16
(1,486)	1:39:A:LYS:HG2	1:40:A:CYS:H	2	0.16	0.02	0.16
(1,635)	1:58:A:ASN:H	1:66:A:GLU:HB3	2	0.16	0.02	0.16
(1,1246)	1:129:A:GLU:HA	1:132:A:LYS:HE3	2	0.15	0.02	0.15
(1,444)	1:33:A:TRP:H	1:34:A:SER:H	2	0.15	0.0	0.15
(1,928)	1:88:A:ASN:HA	1:114:A:GLY:HA2	2	0.15	0.03	0.15
(1,928)	1:88:A:ASN:HA	1:114:A:GLY:HA3	2	0.15	0.03	0.15
(1,1526)	1:152:A:LEU:HB2	1:153:A:GLU:HG2	2	0.15	0.04	0.15
(1,1526)	1:152:A:LEU:HB3	1:153:A:GLU:HG2	2	0.15	0.04	0.15
(1,329)	1:19:A:GLN:HG2	1:20:A:VAL:H	2	0.15	0.03	0.15
(1,412)	1:27:A:ILE:HD11	1:28:A:THR:HA	2	0.14	0.03	0.14
(1,412)	1:27:A:ILE:HD12	1:28:A:THR:HA	2	0.14	0.03	0.14
(1,412)	1:27:A:ILE:HD13	1:28:A:THR:HA	2	0.14	0.03	0.14
(2,5)	1:9:A:ASP:H	1:106:A:GLU:O	2	0.14	0.02	0.14
(1,336)	1:19:A:GLN:HE21	1:156:A:LEU:HD11	2	0.12	0.02	0.12
(1,336)	1:19:A:GLN:HE21	1:156:A:LEU:HD12	2	0.12	0.02	0.12
(1,336)	1:19:A:GLN:HE21	1:156:A:LEU:HD13	2	0.12	0.02	0.12
(1,336)	1:19:A:GLN:HE22	1:156:A:LEU:HD11	2	0.12	0.02	0.12
(1,336)	1:19:A:GLN:HE22	1:156:A:LEU:HD12	2	0.12	0.02	0.12
(1,336)	1:19:A:GLN:HE22	1:156:A:LEU:HD13	2	0.12	0.02	0.12
(1,1456)	1:147:A:ALA:HA	1:150:A:ARG:HD2	2	0.12	0.02	0.12
(1,1456)	1:147:A:ALA:HA	1:150:A:ARG:HD3	2	0.12	0.02	0.12
(1,918)	1:85:A:THR:HG21	1:86:A:ASP:H	2	0.12	0.02	0.12
(1,918)	1:85:A:THR:HG22	1:86:A:ASP:H	2	0.12	0.02	0.12
(1,918)	1:85:A:THR:HG23	1:86:A:ASP:H	2	0.12	0.02	0.12
(1,41)	1:5:A:LEU:HD21	1:133:A:ARG:HD2	2	0.11	0.0	0.11
(1,41)	1:5:A:LEU:HD21	1:133:A:ARG:HD3	2	0.11	0.0	0.11
(1,41)	1:5:A:LEU:HD22	1:133:A:ARG:HD2	2	0.11	0.0	0.11
(1,41)	1:5:A:LEU:HD22	1:133:A:ARG:HD3	2	0.11	0.0	0.11
(1,41)	1:5:A:LEU:HD23	1:133:A:ARG:HD2	2	0.11	0.0	0.11
(1,41)	1:5:A:LEU:HD23	1:133:A:ARG:HD3	2	0.11	0.0	0.11
(1,249)	1:15:A:ALA:H	1:101:A:GLY:HA2	2	0.11	0.0	0.11
(1,249)	1:15:A:ALA:H	1:101:A:GLY:HA3	2	0.11	0.0	0.11
(2,53)	1:84:A:VAL:O	1:89:A:VAL:H	2	0.11	0.0	0.11

¹Number of violated models, ²Standard deviation

9.5 All violated distance restraints [i](#)

9.5.1 Histogram : Distribution of distance violations [i](#)

The following histogram shows the distribution of the absolute value of the violation for all violated restraints in the ensemble.



9.5.2 Table : All distance violations [i](#)

The following table lists the absolute value of the violation for each restraint in the ensemble sorted by its value. The Key (restraint list ID, restraint ID) is the unique identifier for a given restraint. Rows with same key represent combinatorial or ambiguous restraints and are counted as a single restraint.

Key	Atom-1	Atom-2	Model ID	Violation (Å)
(1,1574)	1:157:A:GLU:H	1:157:A:GLU:HG2	3	0.42
(1,1574)	1:157:A:GLU:H	1:157:A:GLU:HG3	3	0.42
(1,1299)	1:133:A:ARG:H	1:133:A:ARG:HG2	11	0.41
(1,1299)	1:133:A:ARG:H	1:133:A:ARG:HG3	11	0.41
(1,1554)	1:155:A:GLU:HA	1:158:A:HIS:HB2	15	0.37
(1,1554)	1:155:A:GLU:HA	1:158:A:HIS:HB3	15	0.37
(1,987)	1:93:A:TYR:HE1	1:145:A:LEU:HD21	20	0.33

Continued on next page...

Continued from previous page...

Key	Atom-1	Atom-2	Model ID	Violation (Å)
(1,987)	1:93:A:TYR:HE1	1:145:A:LEU:HD22	20	0.33
(1,987)	1:93:A:TYR:HE1	1:145:A:LEU:HD23	20	0.33
(1,987)	1:93:A:TYR:HE2	1:145:A:LEU:HD21	20	0.33
(1,987)	1:93:A:TYR:HE2	1:145:A:LEU:HD22	20	0.33
(1,987)	1:93:A:TYR:HE2	1:145:A:LEU:HD23	20	0.33
(1,732)	1:70:A:GLU:HB2	1:83:A:SER:HB2	17	0.31
(1,732)	1:70:A:GLU:HB2	1:83:A:SER:HB3	17	0.31
(1,732)	1:70:A:GLU:HB3	1:83:A:SER:HB2	17	0.31
(1,732)	1:70:A:GLU:HB3	1:83:A:SER:HB3	17	0.31
(1,542)	1:50:A:VAL:H	1:50:A:VAL:HG21	17	0.3
(1,542)	1:50:A:VAL:H	1:50:A:VAL:HG22	17	0.3
(1,542)	1:50:A:VAL:H	1:50:A:VAL:HG23	17	0.3
(1,542)	1:50:A:VAL:H	1:50:A:VAL:HG21	10	0.29
(1,542)	1:50:A:VAL:H	1:50:A:VAL:HG22	10	0.29
(1,542)	1:50:A:VAL:H	1:50:A:VAL:HG23	10	0.29
(1,468)	1:38:A:GLU:HG2	1:39:A:LYS:HE2	11	0.29
(1,468)	1:38:A:GLU:HG2	1:39:A:LYS:HE3	11	0.29
(1,468)	1:38:A:GLU:HG3	1:39:A:LYS:HE2	11	0.29
(1,468)	1:38:A:GLU:HG3	1:39:A:LYS:HE3	11	0.29
(1,691)	1:63:A:ARG:HG3	1:64:A:THR:H	12	0.27
(1,680)	1:63:A:ARG:HA	1:63:A:ARG:HD2	20	0.27
(1,504)	1:43:A:ASP:H	1:54:A:PHE:HA	9	0.27
(1,1518)	1:152:A:LEU:H	1:153:A:GLU:HG3	5	0.26
(1,1137)	1:111:A:THR:H	1:111:A:THR:HG21	5	0.25
(1,1137)	1:111:A:THR:H	1:111:A:THR:HG22	5	0.25
(1,1137)	1:111:A:THR:H	1:111:A:THR:HG23	5	0.25
(1,1137)	1:111:A:THR:H	1:111:A:THR:HG21	8	0.25
(1,1137)	1:111:A:THR:H	1:111:A:THR:HG22	8	0.25
(1,1137)	1:111:A:THR:H	1:111:A:THR:HG23	8	0.25
(1,648)	1:59:A:VAL:HG11	1:60:A:THR:HG21	12	0.25
(1,648)	1:59:A:VAL:HG11	1:60:A:THR:HG22	12	0.25
(1,648)	1:59:A:VAL:HG11	1:60:A:THR:HG23	12	0.25
(1,648)	1:59:A:VAL:HG12	1:60:A:THR:HG21	12	0.25
(1,648)	1:59:A:VAL:HG12	1:60:A:THR:HG22	12	0.25
(1,648)	1:59:A:VAL:HG12	1:60:A:THR:HG23	12	0.25
(1,648)	1:59:A:VAL:HG13	1:60:A:THR:HG21	12	0.25
(1,648)	1:59:A:VAL:HG13	1:60:A:THR:HG22	12	0.25
(1,648)	1:59:A:VAL:HG13	1:60:A:THR:HG23	12	0.25
(1,1497)	1:150:A:ARG:HA	1:153:A:GLU:HG3	16	0.24
(1,1399)	1:142:A:PRO:HG2	1:143:A:GLU:H	14	0.24
(1,1399)	1:142:A:PRO:HG3	1:143:A:GLU:H	14	0.24
(1,1137)	1:111:A:THR:H	1:111:A:THR:HG21	20	0.24

Continued on next page...

Continued from previous page...

Key	Atom-1	Atom-2	Model ID	Violation (Å)
(1,1137)	1:111:A:THR:H	1:111:A:THR:HG22	20	0.24
(1,1137)	1:111:A:THR:H	1:111:A:THR:HG23	20	0.24
(1,730)	1:70:A:GLU:HG2	1:71:A:VAL:H	10	0.24
(1,70)	1:8:A:GLU:H	1:141:A:ILE:HD11	10	0.24
(1,70)	1:8:A:GLU:H	1:141:A:ILE:HD12	10	0.24
(1,70)	1:8:A:GLU:H	1:141:A:ILE:HD13	10	0.24
(1,1137)	1:111:A:THR:H	1:111:A:THR:HG21	14	0.23
(1,1137)	1:111:A:THR:H	1:111:A:THR:HG22	14	0.23
(1,1137)	1:111:A:THR:H	1:111:A:THR:HG23	14	0.23
(1,1151)	1:117:A:PHE:HA	1:120:A:ASP:HB3	1	0.22
(1,730)	1:70:A:GLU:HG2	1:71:A:VAL:H	1	0.21
(1,584)	1:53:A:HIS:HA	1:54:A:PHE:HD1	20	0.21
(1,584)	1:53:A:HIS:HA	1:54:A:PHE:HD2	20	0.21
(1,415)	1:27:A:ILE:HD11	1:42:A:TRP:HE1	5	0.21
(1,415)	1:27:A:ILE:HD12	1:42:A:TRP:HE1	5	0.21
(1,415)	1:27:A:ILE:HD13	1:42:A:TRP:HE1	5	0.21
(1,409)	1:26:A:ASP:HA	1:28:A:THR:H	5	0.21
(1,6)	1:3:A:LYS:HB2	1:4:A:SER:HB2	19	0.21
(1,6)	1:3:A:LYS:HB2	1:4:A:SER:HB3	19	0.21
(1,6)	1:3:A:LYS:HB3	1:4:A:SER:HB2	19	0.21
(1,6)	1:3:A:LYS:HB3	1:4:A:SER:HB3	19	0.21
(1,1399)	1:142:A:PRO:HG2	1:143:A:GLU:H	12	0.2
(1,1399)	1:142:A:PRO:HG3	1:143:A:GLU:H	12	0.2
(1,1273)	1:131:A:GLU:HG3	1:135:A:LEU:HD11	1	0.2
(1,1273)	1:131:A:GLU:HG3	1:135:A:LEU:HD12	1	0.2
(1,1273)	1:131:A:GLU:HG3	1:135:A:LEU:HD13	1	0.2
(1,1526)	1:152:A:LEU:HB2	1:153:A:GLU:HG2	2	0.19
(1,1526)	1:152:A:LEU:HB3	1:153:A:GLU:HG2	2	0.19
(1,1481)	1:149:A:GLN:HA	1:152:A:LEU:HB2	9	0.19
(1,1157)	1:117:A:PHE:HD1	1:121:A:LYS:HE2	7	0.19
(1,1157)	1:117:A:PHE:HD1	1:121:A:LYS:HE3	7	0.19
(1,1157)	1:117:A:PHE:HD2	1:121:A:LYS:HE2	7	0.19
(1,1157)	1:117:A:PHE:HD2	1:121:A:LYS:HE3	7	0.19
(1,1007)	1:95:A:MET:HE1	1:104:A:LEU:HD11	11	0.19
(1,1007)	1:95:A:MET:HE1	1:104:A:LEU:HD12	11	0.19
(1,1007)	1:95:A:MET:HE1	1:104:A:LEU:HD13	11	0.19
(1,1007)	1:95:A:MET:HE2	1:104:A:LEU:HD11	11	0.19
(1,1007)	1:95:A:MET:HE2	1:104:A:LEU:HD12	11	0.19
(1,1007)	1:95:A:MET:HE2	1:104:A:LEU:HD13	11	0.19
(1,1007)	1:95:A:MET:HE3	1:104:A:LEU:HD11	11	0.19
(1,1007)	1:95:A:MET:HE3	1:104:A:LEU:HD12	11	0.19
(1,1007)	1:95:A:MET:HE3	1:104:A:LEU:HD13	11	0.19

Continued on next page...

Continued from previous page...

Key	Atom-1	Atom-2	Model ID	Violation (Å)
(1,957)	1:91:A:TRP:HA	1:92:A:ILE:HD11	19	0.19
(1,957)	1:91:A:TRP:HA	1:92:A:ILE:HD12	19	0.19
(1,957)	1:91:A:TRP:HA	1:92:A:ILE:HD13	19	0.19
(1,731)	1:70:A:GLU:HG3	1:71:A:VAL:H	20	0.19
(1,715)	1:68:A:ARG:HA	1:68:A:ARG:HD3	5	0.19
(1,957)	1:91:A:TRP:HA	1:92:A:ILE:HD11	8	0.18
(1,957)	1:91:A:TRP:HA	1:92:A:ILE:HD12	8	0.18
(1,957)	1:91:A:TRP:HA	1:92:A:ILE:HD13	8	0.18
(1,928)	1:88:A:ASN:HA	1:114:A:GLY:HA2	7	0.18
(1,928)	1:88:A:ASN:HA	1:114:A:GLY:HA3	7	0.18
(1,799)	1:73:A:VAL:HB	1:92:A:ILE:HD11	2	0.18
(1,799)	1:73:A:VAL:HB	1:92:A:ILE:HD12	2	0.18
(1,799)	1:73:A:VAL:HB	1:92:A:ILE:HD13	2	0.18
(1,691)	1:63:A:ARG:HG3	1:64:A:THR:H	6	0.18
(1,416)	1:27:A:ILE:HG12	1:42:A:TRP:HE1	14	0.18
(1,416)	1:27:A:ILE:HG13	1:42:A:TRP:HE1	14	0.18
(1,65)	1:7:A:PHE:HD1	1:141:A:ILE:HG12	14	0.18
(1,65)	1:7:A:PHE:HD1	1:141:A:ILE:HG13	14	0.18
(1,65)	1:7:A:PHE:HD2	1:141:A:ILE:HG12	14	0.18
(1,65)	1:7:A:PHE:HD2	1:141:A:ILE:HG13	14	0.18
(1,1549)	1:154:A:VAL:HG11	1:158:A:HIS:HB2	19	0.17
(1,1549)	1:154:A:VAL:HG11	1:158:A:HIS:HB3	19	0.17
(1,1549)	1:154:A:VAL:HG12	1:158:A:HIS:HB2	19	0.17
(1,1549)	1:154:A:VAL:HG12	1:158:A:HIS:HB3	19	0.17
(1,1549)	1:154:A:VAL:HG13	1:158:A:HIS:HB2	19	0.17
(1,1549)	1:154:A:VAL:HG13	1:158:A:HIS:HB3	19	0.17
(1,1497)	1:150:A:ARG:HA	1:153:A:GLU:HG3	12	0.17
(1,1246)	1:129:A:GLU:HA	1:132:A:LYS:HE3	7	0.17
(1,1183)	1:122:A:PHE:H	1:123:A:GLY:H	6	0.17
(1,1157)	1:117:A:PHE:HD1	1:121:A:LYS:HE2	8	0.17
(1,1157)	1:117:A:PHE:HD1	1:121:A:LYS:HE3	8	0.17
(1,1157)	1:117:A:PHE:HD2	1:121:A:LYS:HE2	8	0.17
(1,1157)	1:117:A:PHE:HD2	1:121:A:LYS:HE3	8	0.17
(1,635)	1:58:A:ASN:H	1:66:A:GLU:HB3	20	0.17
(1,488)	1:39:A:LYS:HG3	1:40:A:CYS:H	14	0.17
(1,486)	1:39:A:LYS:HG2	1:40:A:CYS:H	20	0.17
(1,412)	1:27:A:ILE:HD11	1:28:A:THR:HA	14	0.17
(1,412)	1:27:A:ILE:HD12	1:28:A:THR:HA	14	0.17
(1,412)	1:27:A:ILE:HD13	1:28:A:THR:HA	14	0.17
(1,341)	1:19:A:GLN:HG2	1:152:A:LEU:HD11	10	0.17
(1,341)	1:19:A:GLN:HG2	1:152:A:LEU:HD12	10	0.17
(1,341)	1:19:A:GLN:HG2	1:152:A:LEU:HD13	10	0.17

Continued on next page...

Continued from previous page...

Key	Atom-1	Atom-2	Model ID	Violation (Å)
(1,341)	1:19:A:GLN:HG2	1:152:A:LEU:HD21	10	0.17
(1,341)	1:19:A:GLN:HG2	1:152:A:LEU:HD22	10	0.17
(1,341)	1:19:A:GLN:HG2	1:152:A:LEU:HD23	10	0.17
(1,341)	1:19:A:GLN:HG3	1:152:A:LEU:HD11	10	0.17
(1,341)	1:19:A:GLN:HG3	1:152:A:LEU:HD12	10	0.17
(1,341)	1:19:A:GLN:HG3	1:152:A:LEU:HD13	10	0.17
(1,341)	1:19:A:GLN:HG3	1:152:A:LEU:HD21	10	0.17
(1,341)	1:19:A:GLN:HG3	1:152:A:LEU:HD22	10	0.17
(1,341)	1:19:A:GLN:HG3	1:152:A:LEU:HD23	10	0.17
(1,329)	1:19:A:GLN:HG2	1:20:A:VAL:H	20	0.17
(1,33)	1:5:A:LEU:HD11	1:133:A:ARG:HB2	8	0.17
(1,33)	1:5:A:LEU:HD11	1:133:A:ARG:HB3	8	0.17
(1,33)	1:5:A:LEU:HD12	1:133:A:ARG:HB2	8	0.17
(1,33)	1:5:A:LEU:HD12	1:133:A:ARG:HB3	8	0.17
(1,33)	1:5:A:LEU:HD13	1:133:A:ARG:HB2	8	0.17
(1,33)	1:5:A:LEU:HD13	1:133:A:ARG:HB3	8	0.17
(1,10)	1:3:A:LYS:HG2	1:4:A:SER:HB3	4	0.17
(1,10)	1:3:A:LYS:HG3	1:4:A:SER:HB3	4	0.17
(1,9)	1:3:A:LYS:HG2	1:4:A:SER:HB2	13	0.17
(1,9)	1:3:A:LYS:HG3	1:4:A:SER:HB2	13	0.17
(2,5)	1:9:A:ASP:H	1:106:A:GLU:O	11	0.16
(1,1538)	1:153:A:GLU:HG3	1:156:A:LEU:HD11	5	0.16
(1,1538)	1:153:A:GLU:HG3	1:156:A:LEU:HD12	5	0.16
(1,1538)	1:153:A:GLU:HG3	1:156:A:LEU:HD13	5	0.16
(1,1273)	1:131:A:GLU:HG3	1:135:A:LEU:HD11	5	0.16
(1,1273)	1:131:A:GLU:HG3	1:135:A:LEU:HD12	5	0.16
(1,1273)	1:131:A:GLU:HG3	1:135:A:LEU:HD13	5	0.16
(1,1049)	1:98:A:LEU:HD11	1:100:A:GLU:HG2	20	0.16
(1,1049)	1:98:A:LEU:HD11	1:100:A:GLU:HG3	20	0.16
(1,1049)	1:98:A:LEU:HD12	1:100:A:GLU:HG2	20	0.16
(1,1049)	1:98:A:LEU:HD12	1:100:A:GLU:HG3	20	0.16
(1,1049)	1:98:A:LEU:HD13	1:100:A:GLU:HG2	20	0.16
(1,1049)	1:98:A:LEU:HD13	1:100:A:GLU:HG3	20	0.16
(1,829)	1:75:A:GLU:H	1:79:A:CYS:H	13	0.16
(1,800)	1:73:A:VAL:HG11	1:75:A:GLU:H	13	0.16
(1,800)	1:73:A:VAL:HG12	1:75:A:GLU:H	13	0.16
(1,800)	1:73:A:VAL:HG13	1:75:A:GLU:H	13	0.16
(1,648)	1:59:A:VAL:HG11	1:60:A:THR:HG21	6	0.16
(1,648)	1:59:A:VAL:HG11	1:60:A:THR:HG22	6	0.16
(1,648)	1:59:A:VAL:HG11	1:60:A:THR:HG23	6	0.16
(1,648)	1:59:A:VAL:HG12	1:60:A:THR:HG21	6	0.16
(1,648)	1:59:A:VAL:HG12	1:60:A:THR:HG22	6	0.16

Continued on next page...

Continued from previous page...

Key	Atom-1	Atom-2	Model ID	Violation (Å)
(1,648)	1:59:A:VAL:HG12	1:60:A:THR:HG23	6	0.16
(1,648)	1:59:A:VAL:HG13	1:60:A:THR:HG21	6	0.16
(1,648)	1:59:A:VAL:HG13	1:60:A:THR:HG22	6	0.16
(1,648)	1:59:A:VAL:HG13	1:60:A:THR:HG23	6	0.16
(1,443)	1:33:A:TRP:H	1:33:A:TRP:HE1	12	0.16
(1,156)	1:11:A:ILE:HG21	1:104:A:LEU:HG	17	0.16
(1,156)	1:11:A:ILE:HG22	1:104:A:LEU:HG	17	0.16
(1,156)	1:11:A:ILE:HG23	1:104:A:LEU:HG	17	0.16
(1,10)	1:3:A:LYS:HG2	1:4:A:SER:HB3	7	0.16
(1,10)	1:3:A:LYS:HG3	1:4:A:SER:HB3	7	0.16
(1,1549)	1:154:A:VAL:HG11	1:158:A:HIS:HB2	2	0.15
(1,1549)	1:154:A:VAL:HG11	1:158:A:HIS:HB3	2	0.15
(1,1549)	1:154:A:VAL:HG12	1:158:A:HIS:HB2	2	0.15
(1,1549)	1:154:A:VAL:HG12	1:158:A:HIS:HB3	2	0.15
(1,1549)	1:154:A:VAL:HG13	1:158:A:HIS:HB2	2	0.15
(1,1549)	1:154:A:VAL:HG13	1:158:A:HIS:HB3	2	0.15
(1,1525)	1:152:A:LEU:HB2	1:153:A:GLU:H	2	0.15
(1,1525)	1:152:A:LEU:HB3	1:153:A:GLU:H	2	0.15
(1,1482)	1:149:A:GLN:HA	1:152:A:LEU:HB3	12	0.15
(1,1299)	1:133:A:ARG:H	1:133:A:ARG:HG2	13	0.15
(1,1299)	1:133:A:ARG:H	1:133:A:ARG:HG3	13	0.15
(1,1239)	1:128:A:GLU:HG2	1:132:A:LYS:HE3	6	0.15
(1,1239)	1:128:A:GLU:HG3	1:132:A:LYS:HE3	6	0.15
(1,634)	1:58:A:ASN:H	1:66:A:GLU:HB2	17	0.15
(1,444)	1:33:A:TRP:H	1:34:A:SER:H	6	0.15
(1,444)	1:33:A:TRP:H	1:34:A:SER:H	8	0.15
(2,29)	1:54:A:PHE:H	1:69:A:SER:O	1	0.14
(1,1456)	1:147:A:ALA:HA	1:150:A:ARG:HD2	8	0.14
(1,1456)	1:147:A:ALA:HA	1:150:A:ARG:HD3	8	0.14
(1,1239)	1:128:A:GLU:HG2	1:132:A:LYS:HE3	4	0.14
(1,1239)	1:128:A:GLU:HG3	1:132:A:LYS:HE3	4	0.14
(1,1007)	1:95:A:MET:HE1	1:104:A:LEU:HD11	15	0.14
(1,1007)	1:95:A:MET:HE1	1:104:A:LEU:HD12	15	0.14
(1,1007)	1:95:A:MET:HE1	1:104:A:LEU:HD13	15	0.14
(1,1007)	1:95:A:MET:HE2	1:104:A:LEU:HD11	15	0.14
(1,1007)	1:95:A:MET:HE2	1:104:A:LEU:HD12	15	0.14
(1,1007)	1:95:A:MET:HE2	1:104:A:LEU:HD13	15	0.14
(1,1007)	1:95:A:MET:HE3	1:104:A:LEU:HD11	15	0.14
(1,1007)	1:95:A:MET:HE3	1:104:A:LEU:HD12	15	0.14
(1,1007)	1:95:A:MET:HE3	1:104:A:LEU:HD13	15	0.14
(1,957)	1:91:A:TRP:HA	1:92:A:ILE:HD11	18	0.14
(1,957)	1:91:A:TRP:HA	1:92:A:ILE:HD12	18	0.14

Continued on next page...

Continued from previous page...

Key	Atom-1	Atom-2	Model ID	Violation (Å)
(1,957)	1:91:A:TRP:HA	1:92:A:ILE:HD13	18	0.14
(1,731)	1:70:A:GLU:HG3	1:71:A:VAL:H	3	0.14
(1,635)	1:58:A:ASN:H	1:66:A:GLU:HB3	16	0.14
(1,631)	1:58:A:ASN:H	1:64:A:THR:HG21	14	0.14
(1,631)	1:58:A:ASN:H	1:64:A:THR:HG22	14	0.14
(1,631)	1:58:A:ASN:H	1:64:A:THR:HG23	14	0.14
(1,591)	1:53:A:HIS:HD2	1:70:A:GLU:HB2	4	0.14
(1,591)	1:53:A:HIS:HD2	1:70:A:GLU:HB3	4	0.14
(1,486)	1:39:A:LYS:HG2	1:40:A:CYS:H	5	0.14
(1,336)	1:19:A:GLN:HE21	1:156:A:LEU:HD11	5	0.14
(1,336)	1:19:A:GLN:HE21	1:156:A:LEU:HD12	5	0.14
(1,336)	1:19:A:GLN:HE21	1:156:A:LEU:HD13	5	0.14
(1,336)	1:19:A:GLN:HE22	1:156:A:LEU:HD11	5	0.14
(1,336)	1:19:A:GLN:HE22	1:156:A:LEU:HD12	5	0.14
(1,336)	1:19:A:GLN:HE22	1:156:A:LEU:HD13	5	0.14
(1,272)	1:16:A:PRO:HG2	1:19:A:GLN:HE21	9	0.14
(1,49)	1:6:A:THR:HG21	1:109:A:GLU:HB2	20	0.14
(1,49)	1:6:A:THR:HG21	1:109:A:GLU:HB3	20	0.14
(1,49)	1:6:A:THR:HG22	1:109:A:GLU:HB2	20	0.14
(1,49)	1:6:A:THR:HG22	1:109:A:GLU:HB3	20	0.14
(1,49)	1:6:A:THR:HG23	1:109:A:GLU:HB2	20	0.14
(1,49)	1:6:A:THR:HG23	1:109:A:GLU:HB3	20	0.14
(1,9)	1:3:A:LYS:HG2	1:4:A:SER:HB2	20	0.14
(1,9)	1:3:A:LYS:HG3	1:4:A:SER:HB2	20	0.14
(1,6)	1:3:A:LYS:HB2	1:4:A:SER:HB2	3	0.14
(1,6)	1:3:A:LYS:HB2	1:4:A:SER:HB3	3	0.14
(1,6)	1:3:A:LYS:HB3	1:4:A:SER:HB2	3	0.14
(1,6)	1:3:A:LYS:HB3	1:4:A:SER:HB3	3	0.14
(2,69)	1:96:A:GLU:O	1:103:A:VAL:H	12	0.13
(1,1246)	1:129:A:GLU:HA	1:132:A:LYS:HE3	9	0.13
(1,1190)	1:122:A:PHE:HB2	1:126:A:SER:HB2	9	0.13
(1,1190)	1:122:A:PHE:HB2	1:126:A:SER:HB3	9	0.13
(1,1190)	1:122:A:PHE:HB3	1:126:A:SER:HB2	9	0.13
(1,1190)	1:122:A:PHE:HB3	1:126:A:SER:HB3	9	0.13
(1,1183)	1:122:A:PHE:H	1:123:A:GLY:H	4	0.13
(1,1183)	1:122:A:PHE:H	1:123:A:GLY:H	19	0.13
(1,1032)	1:98:A:LEU:HA	1:99:A:GLU:HA	18	0.13
(1,918)	1:85:A:THR:HG21	1:86:A:ASP:H	11	0.13
(1,918)	1:85:A:THR:HG22	1:86:A:ASP:H	11	0.13
(1,918)	1:85:A:THR:HG23	1:86:A:ASP:H	11	0.13
(1,916)	1:85:A:THR:HB	1:87:A:GLY:H	17	0.13
(1,888)	1:83:A:SER:HB2	1:89:A:VAL:H	16	0.13

Continued on next page...

Continued from previous page...

Key	Atom-1	Atom-2	Model ID	Violation (Å)
(1,888)	1:83:A:SER:HB3	1:89:A:VAL:H	16	0.13
(1,842)	1:78:A:ARG:H	1:78:A:ARG:HD2	11	0.13
(1,842)	1:78:A:ARG:H	1:78:A:ARG:HD3	11	0.13
(1,740)	1:71:A:VAL:HA	1:82:A:TRP:HA	9	0.13
(1,619)	1:57:A:ARG:HA	1:66:A:GLU:HA	19	0.13
(1,610)	1:55:A:THR:HG21	1:67:A:THR:H	3	0.13
(1,610)	1:55:A:THR:HG22	1:67:A:THR:H	3	0.13
(1,610)	1:55:A:THR:HG23	1:67:A:THR:H	3	0.13
(1,409)	1:26:A:ASP:HA	1:28:A:THR:H	17	0.13
(1,351)	1:20:A:VAL:HA	1:23:A:LEU:HB3	16	0.13
(1,316)	1:18:A:ASN:HD21	1:19:A:GLN:H	3	0.13
(1,316)	1:18:A:ASN:HD22	1:19:A:GLN:H	3	0.13
(1,272)	1:16:A:PRO:HG2	1:19:A:GLN:HE21	7	0.13
(2,73)	1:118:A:PHE:O	1:122:A:PHE:H	2	0.12
(2,5)	1:9:A:ASP:H	1:106:A:GLU:O	5	0.12
(1,1399)	1:142:A:PRO:HG2	1:143:A:GLU:H	1	0.12
(1,1399)	1:142:A:PRO:HG3	1:143:A:GLU:H	1	0.12
(1,928)	1:88:A:ASN:HA	1:114:A:GLY:HA2	19	0.12
(1,928)	1:88:A:ASN:HA	1:114:A:GLY:HA3	19	0.12
(1,919)	1:85:A:THR:HG21	1:87:A:GLY:H	5	0.12
(1,919)	1:85:A:THR:HG22	1:87:A:GLY:H	5	0.12
(1,919)	1:85:A:THR:HG23	1:87:A:GLY:H	5	0.12
(1,916)	1:85:A:THR:HB	1:87:A:GLY:H	2	0.12
(1,518)	1:47:A:GLY:H	1:52:A:ALA:HB1	18	0.12
(1,518)	1:47:A:GLY:H	1:52:A:ALA:HB2	18	0.12
(1,518)	1:47:A:GLY:H	1:52:A:ALA:HB3	18	0.12
(1,488)	1:39:A:LYS:HG3	1:40:A:CYS:H	4	0.12
(1,488)	1:39:A:LYS:HG3	1:40:A:CYS:H	8	0.12
(1,435)	1:31:A:GLY:HA3	1:37:A:CYS:HB2	3	0.12
(1,435)	1:31:A:GLY:HA3	1:37:A:CYS:HB3	3	0.12
(1,434)	1:31:A:GLY:HA2	1:37:A:CYS:HB2	7	0.12
(1,434)	1:31:A:GLY:HA2	1:37:A:CYS:HB3	7	0.12
(1,420)	1:28:A:THR:H	1:29:A:ARG:H	14	0.12
(1,416)	1:27:A:ILE:HG12	1:42:A:TRP:HE1	17	0.12
(1,416)	1:27:A:ILE:HG13	1:42:A:TRP:HE1	17	0.12
(1,329)	1:19:A:GLN:HG2	1:20:A:VAL:H	13	0.12
(1,272)	1:16:A:PRO:HG2	1:19:A:GLN:HE21	16	0.12
(1,272)	1:16:A:PRO:HG2	1:19:A:GLN:HE21	17	0.12
(1,10)	1:3:A:LYS:HG2	1:4:A:SER:HB3	16	0.12
(1,10)	1:3:A:LYS:HG3	1:4:A:SER:HB3	16	0.12
(1,6)	1:3:A:LYS:HB2	1:4:A:SER:HB2	13	0.12
(1,6)	1:3:A:LYS:HB2	1:4:A:SER:HB3	13	0.12

Continued on next page...

Continued from previous page...

Key	Atom-1	Atom-2	Model ID	Violation (Å)
(1,6)	1:3:A:LYS:HB3	1:4:A:SER:HB2	13	0.12
(1,6)	1:3:A:LYS:HB3	1:4:A:SER:HB3	13	0.12
(2,103)	1:149:A:GLN:O	1:153:A:GLU:H	12	0.11
(2,81)	1:130:A:ILE:O	1:134:A:ARG:H	1	0.11
(2,81)	1:130:A:ILE:O	1:134:A:ARG:H	7	0.11
(2,53)	1:84:A:VAL:O	1:89:A:VAL:H	5	0.11
(2,41)	1:63:A:ARG:O	1:60:A:THR:H	20	0.11
(2,33)	1:56:A:GLY:H	1:67:A:THR:O	10	0.11
(2,25)	1:41:A:TRP:H	1:55:A:THR:O	16	0.11
(1,1569)	1:156:A:LEU:HD11	1:157:A:GLU:H	10	0.11
(1,1569)	1:156:A:LEU:HD12	1:157:A:GLU:H	10	0.11
(1,1569)	1:156:A:LEU:HD13	1:157:A:GLU:H	10	0.11
(1,1526)	1:152:A:LEU:HB2	1:153:A:GLU:HG2	9	0.11
(1,1526)	1:152:A:LEU:HB3	1:153:A:GLU:HG2	9	0.11
(1,1497)	1:150:A:ARG:HA	1:153:A:GLU:HG3	1	0.11
(1,1455)	1:147:A:ALA:HA	1:150:A:ARG:HB2	10	0.11
(1,1455)	1:147:A:ALA:HA	1:150:A:ARG:HB3	10	0.11
(1,1273)	1:131:A:GLU:HG3	1:135:A:LEU:HD11	7	0.11
(1,1273)	1:131:A:GLU:HG3	1:135:A:LEU:HD12	7	0.11
(1,1273)	1:131:A:GLU:HG3	1:135:A:LEU:HD13	7	0.11
(1,1230)	1:127:A:ILE:HG21	1:128:A:GLU:HG2	15	0.11
(1,1230)	1:127:A:ILE:HG21	1:128:A:GLU:HG3	15	0.11
(1,1230)	1:127:A:ILE:HG22	1:128:A:GLU:HG2	15	0.11
(1,1230)	1:127:A:ILE:HG22	1:128:A:GLU:HG3	15	0.11
(1,1230)	1:127:A:ILE:HG23	1:128:A:GLU:HG2	15	0.11
(1,1230)	1:127:A:ILE:HG23	1:128:A:GLU:HG3	15	0.11
(1,1151)	1:117:A:PHE:HA	1:120:A:ASP:HB3	13	0.11
(1,986)	1:93:A:TYR:HD1	1:145:A:LEU:HD21	13	0.11
(1,986)	1:93:A:TYR:HD1	1:145:A:LEU:HD22	13	0.11
(1,986)	1:93:A:TYR:HD1	1:145:A:LEU:HD23	13	0.11
(1,986)	1:93:A:TYR:HD2	1:145:A:LEU:HD21	13	0.11
(1,986)	1:93:A:TYR:HD2	1:145:A:LEU:HD22	13	0.11
(1,986)	1:93:A:TYR:HD2	1:145:A:LEU:HD23	13	0.11
(1,916)	1:85:A:THR:HB	1:87:A:GLY:H	1	0.11
(1,880)	1:82:A:TRP:H	1:92:A:ILE:HD11	18	0.11
(1,880)	1:82:A:TRP:H	1:92:A:ILE:HD12	18	0.11
(1,880)	1:82:A:TRP:H	1:92:A:ILE:HD13	18	0.11
(1,804)	1:73:A:VAL:HG11	1:80:A:PHE:H	9	0.11
(1,804)	1:73:A:VAL:HG12	1:80:A:PHE:H	9	0.11
(1,804)	1:73:A:VAL:HG13	1:80:A:PHE:H	9	0.11
(1,544)	1:50:A:VAL:H	1:71:A:VAL:HG11	17	0.11
(1,544)	1:50:A:VAL:H	1:71:A:VAL:HG12	17	0.11

Continued on next page...

Continued from previous page...

Key	Atom-1	Atom-2	Model ID	Violation (Å)
(1,544)	1:50:A:VAL:H	1:71:A:VAL:HG13	17	0.11
(1,488)	1:39:A:LYS:HG3	1:40:A:CYS:H	1	0.11
(1,414)	1:27:A:ILE:HD11	1:40:A:CYS:HB2	13	0.11
(1,414)	1:27:A:ILE:HD11	1:40:A:CYS:HB3	13	0.11
(1,414)	1:27:A:ILE:HD12	1:40:A:CYS:HB2	13	0.11
(1,414)	1:27:A:ILE:HD12	1:40:A:CYS:HB3	13	0.11
(1,414)	1:27:A:ILE:HD13	1:40:A:CYS:HB2	13	0.11
(1,414)	1:27:A:ILE:HD13	1:40:A:CYS:HB3	13	0.11
(1,412)	1:27:A:ILE:HD11	1:28:A:THR:HA	6	0.11
(1,412)	1:27:A:ILE:HD12	1:28:A:THR:HA	6	0.11
(1,412)	1:27:A:ILE:HD13	1:28:A:THR:HA	6	0.11
(1,409)	1:26:A:ASP:HA	1:28:A:THR:H	19	0.11
(1,336)	1:19:A:GLN:HE21	1:156:A:LEU:HD11	20	0.11
(1,336)	1:19:A:GLN:HE21	1:156:A:LEU:HD12	20	0.11
(1,336)	1:19:A:GLN:HE21	1:156:A:LEU:HD13	20	0.11
(1,336)	1:19:A:GLN:HE22	1:156:A:LEU:HD11	20	0.11
(1,336)	1:19:A:GLN:HE22	1:156:A:LEU:HD12	20	0.11
(1,336)	1:19:A:GLN:HE22	1:156:A:LEU:HD13	20	0.11
(1,273)	1:16:A:PRO:HG2	1:19:A:GLN:HG2	4	0.11
(1,273)	1:16:A:PRO:HG2	1:19:A:GLN:HG3	4	0.11
(1,249)	1:15:A:ALA:H	1:101:A:GLY:HA2	6	0.11
(1,249)	1:15:A:ALA:H	1:101:A:GLY:HA3	6	0.11
(1,249)	1:15:A:ALA:H	1:101:A:GLY:HA2	20	0.11
(1,249)	1:15:A:ALA:H	1:101:A:GLY:HA3	20	0.11
(1,146)	1:11:A:ILE:HD11	1:149:A:GLN:H	17	0.11
(1,146)	1:11:A:ILE:HD12	1:149:A:GLN:H	17	0.11
(1,146)	1:11:A:ILE:HD13	1:149:A:GLN:H	17	0.11
(1,41)	1:5:A:LEU:HD21	1:133:A:ARG:HD2	13	0.11
(1,41)	1:5:A:LEU:HD21	1:133:A:ARG:HD3	13	0.11
(1,41)	1:5:A:LEU:HD22	1:133:A:ARG:HD2	13	0.11
(1,41)	1:5:A:LEU:HD22	1:133:A:ARG:HD3	13	0.11
(1,41)	1:5:A:LEU:HD23	1:133:A:ARG:HD2	13	0.11
(1,41)	1:5:A:LEU:HD23	1:133:A:ARG:HD3	13	0.11
(1,41)	1:5:A:LEU:HD21	1:133:A:ARG:HD2	20	0.11
(1,41)	1:5:A:LEU:HD21	1:133:A:ARG:HD3	20	0.11
(1,41)	1:5:A:LEU:HD22	1:133:A:ARG:HD2	20	0.11
(1,41)	1:5:A:LEU:HD22	1:133:A:ARG:HD3	20	0.11
(1,41)	1:5:A:LEU:HD23	1:133:A:ARG:HD2	20	0.11
(1,41)	1:5:A:LEU:HD23	1:133:A:ARG:HD3	20	0.11
(1,4)	1:3:A:LYS:HA	1:4:A:SER:HB3	5	0.11
(1,3)	1:3:A:LYS:HA	1:4:A:SER:HB2	12	0.11
(2,81)	1:130:A:ILE:O	1:134:A:ARG:H	6	0.1

Continued on next page...

Continued from previous page...

Key	Atom-1	Atom-2	Model ID	Violation (Å)
(2,79)	1:129:A:GLU:O	1:133:A:ARG:H	11	0.1
(2,53)	1:84:A:VAL:O	1:89:A:VAL:H	20	0.1
(2,19)	1:19:A:GLN:O	1:23:A:LEU:H	12	0.1
(1,1456)	1:147:A:ALA:HA	1:150:A:ARG:HD2	1	0.1
(1,1456)	1:147:A:ALA:HA	1:150:A:ARG:HD3	1	0.1
(1,1239)	1:128:A:GLU:HG2	1:132:A:LYS:HE3	2	0.1
(1,1239)	1:128:A:GLU:HG3	1:132:A:LYS:HE3	2	0.1
(1,1220)	1:127:A:ILE:HA	1:130:A:ILE:HD11	15	0.1
(1,1220)	1:127:A:ILE:HA	1:130:A:ILE:HD12	15	0.1
(1,1220)	1:127:A:ILE:HA	1:130:A:ILE:HD13	15	0.1
(1,1104)	1:104:A:LEU:HD21	1:105:A:THR:HB	20	0.1
(1,1104)	1:104:A:LEU:HD22	1:105:A:THR:HB	20	0.1
(1,1104)	1:104:A:LEU:HD23	1:105:A:THR:HB	20	0.1
(1,918)	1:85:A:THR:HG21	1:86:A:ASP:H	9	0.1
(1,918)	1:85:A:THR:HG22	1:86:A:ASP:H	9	0.1
(1,918)	1:85:A:THR:HG23	1:86:A:ASP:H	9	0.1
(1,916)	1:85:A:THR:HB	1:87:A:GLY:H	16	0.1
(1,891)	1:83:A:SER:HB2	1:91:A:TRP:H	12	0.1
(1,891)	1:83:A:SER:HB3	1:91:A:TRP:H	12	0.1
(1,592)	1:53:A:HIS:HD2	1:70:A:GLU:HG2	12	0.1
(1,592)	1:53:A:HIS:HD2	1:70:A:GLU:HG3	12	0.1
(1,590)	1:53:A:HIS:HD2	1:70:A:GLU:HA	9	0.1
(1,416)	1:27:A:ILE:HG12	1:42:A:TRP:HE1	12	0.1
(1,416)	1:27:A:ILE:HG13	1:42:A:TRP:HE1	12	0.1
(1,35)	1:5:A:LEU:HD11	1:134:A:ARG:HA	14	0.1
(1,35)	1:5:A:LEU:HD12	1:134:A:ARG:HA	14	0.1
(1,35)	1:5:A:LEU:HD13	1:134:A:ARG:HA	14	0.1
(1,18)	1:5:A:LEU:HA	1:5:A:LEU:HD21	10	0.1
(1,18)	1:5:A:LEU:HA	1:5:A:LEU:HD22	10	0.1
(1,18)	1:5:A:LEU:HA	1:5:A:LEU:HD23	10	0.1

10 Dihedral-angle violation analysis [i](#)

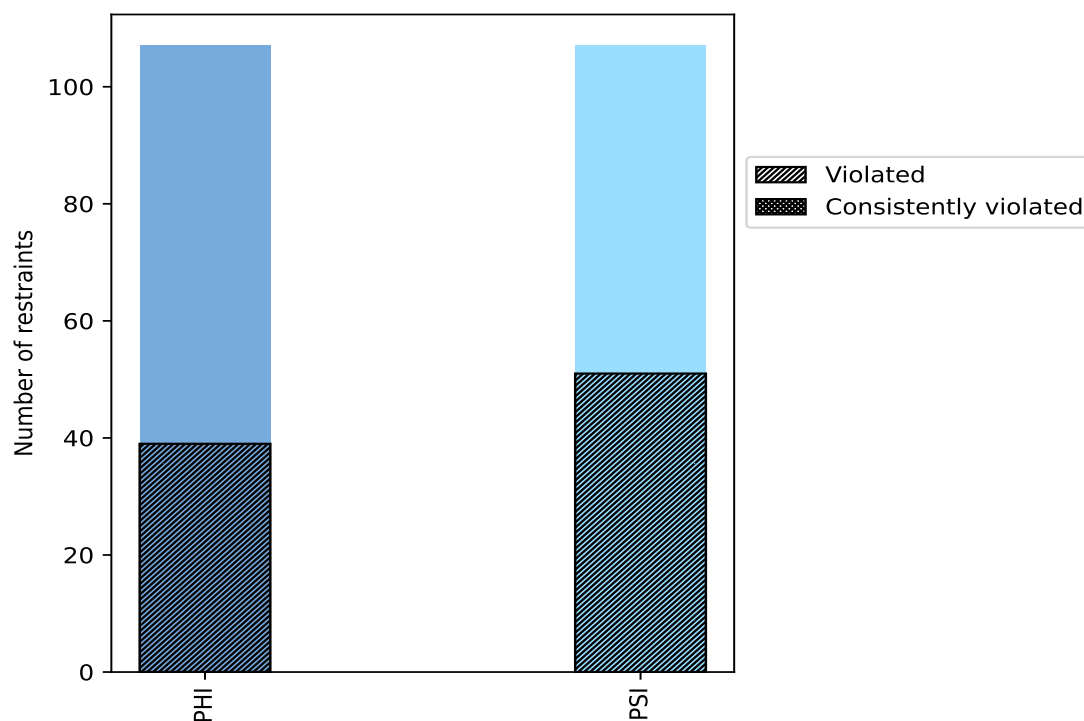
10.1 Summary of dihedral-angle violations [i](#)

The following table provides the summary of dihedral-angle violations in different dihedral-angle types. Violations less than 1° are not included in the calculation.

Angle type	Count	% ¹	Violated ³			Consistently Violated ⁴		
			Count	% ²	% ¹	Count	% ²	% ¹
PHI	107	50.0	39	36.4	18.2	0	0.0	0.0
PSI	107	50.0	51	47.7	23.8	0	0.0	0.0
Total	214	100.0	90	42.1	42.1	0	0.0	0.0

¹ percentage calculated with respect to total number of dihedral-angle restraints, ² percentage calculated with respect to number of restraints in a particular dihedral-angle type, ³ violated in at least one model, ⁴ violated in all the models

10.1.1 Bar chart : Distribution of dihedral-angles and violations [i](#)



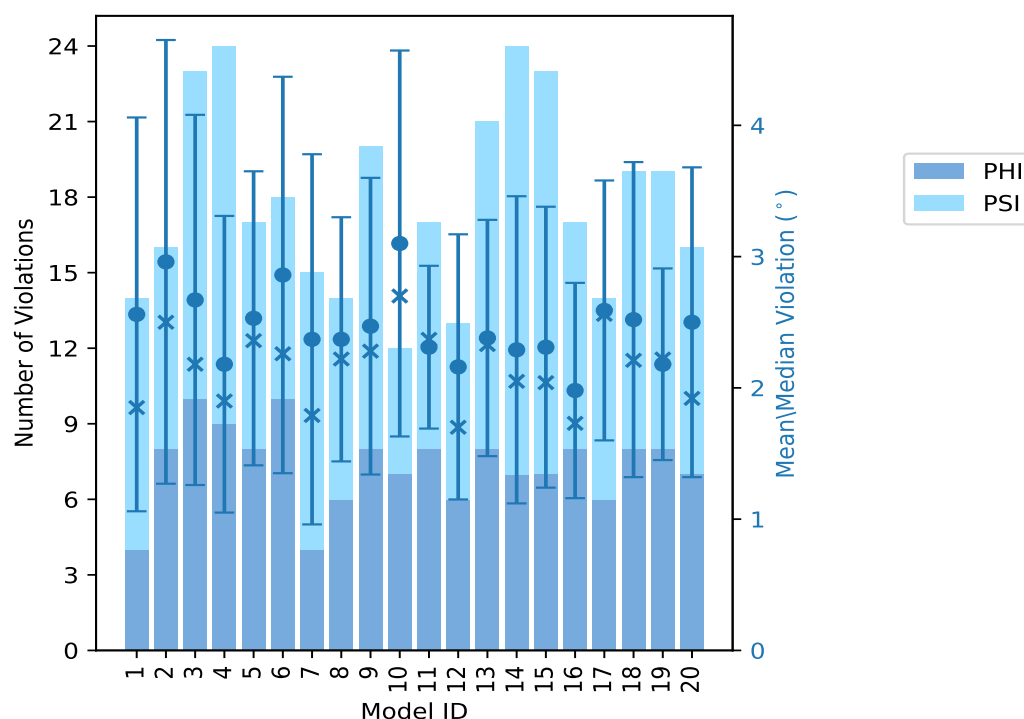
Violated and consistently violated restraints are shown using different hatch patterns in their respective categories

10.2 Dihedral-angle violation statistics for each model

The following table provides the dihedral-angle violation statistics for each model in the ensemble. Violations less than 1° are not included in the statistics.

Model ID	Number of violations			Mean (°)	Max (°)	SD (°)	Median (°)
	PHI	PSI	Total				
1	4	10	14	2.56	5.44	1.5	1.85
2	8	8	16	2.96	8.12	1.69	2.5
3	10	13	23	2.67	5.96	1.41	2.18
4	9	15	24	2.18	6.71	1.13	1.9
5	8	9	17	2.53	5.83	1.12	2.36
6	10	8	18	2.86	6.23	1.51	2.26
7	4	11	15	2.37	5.65	1.41	1.79
8	6	8	14	2.37	4.12	0.93	2.22
9	8	12	20	2.47	5.54	1.13	2.28
10	7	5	12	3.1	6.11	1.47	2.7
11	8	9	17	2.31	3.44	0.62	2.37
12	6	7	13	2.16	4.28	1.01	1.7
13	8	13	21	2.38	4.65	0.9	2.33
14	7	17	24	2.29	4.76	1.17	2.05
15	7	16	23	2.31	4.78	1.07	2.04
16	8	9	17	1.98	3.78	0.82	1.73
17	6	8	14	2.59	4.49	0.99	2.56
18	8	11	19	2.52	5.3	1.2	2.21
19	8	11	19	2.18	3.7	0.73	2.22
20	7	9	16	2.5	5.63	1.18	1.92

10.2.1 Bar graph : Dihedral violation statistics for each model [i](#)



The mean(dot),median(x) and the standard deviation are shown in blue with respect to the y axis on the right

10.3 Dihedral-angle violation statistics for the ensemble [i](#)

Violation analysis may find that some restraints are violated in very few models and some are violated in most of models. The following table provides this information as number of violated restraints for a given fraction of ensemble.

Number of violated restraints			Fraction of the ensemble	
PHI	PSI	Total	Count ¹	%
14	15	29	1	5.0
4	6	10	2	10.0
4	9	13	3	15.0
7	6	13	4	20.0
2	4	6	5	25.0
2	4	6	6	30.0
1	1	2	7	35.0
0	1	1	8	40.0
2	0	2	9	45.0
1	0	1	10	50.0
1	0	1	11	55.0

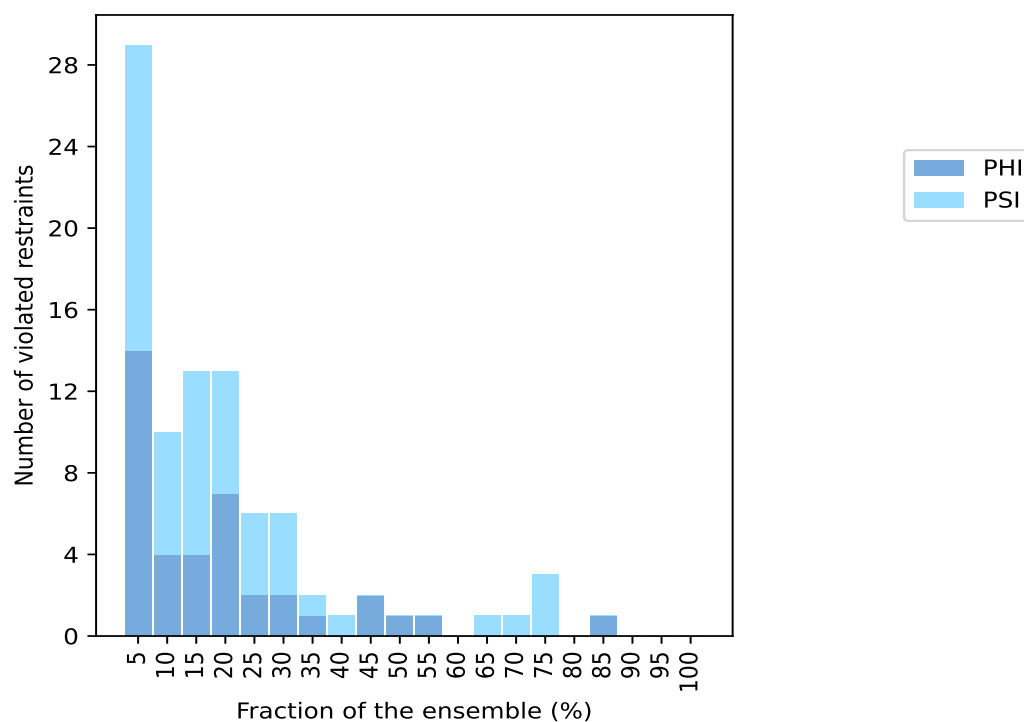
Continued on next page...

Continued from previous page...

Number of violated restraints			Fraction of the ensemble	
PHI	PSI	Total	Count ¹	%
0	0	0	12	60.0
0	1	1	13	65.0
0	1	1	14	70.0
0	3	3	15	75.0
0	0	0	16	80.0
1	0	1	17	85.0
0	0	0	18	90.0
0	0	0	19	95.0
0	0	0	20	100.0

¹ Number of models with violations

10.3.1 Bar graph : Dihedral-angle Violation statistics for the ensemble ⓘ

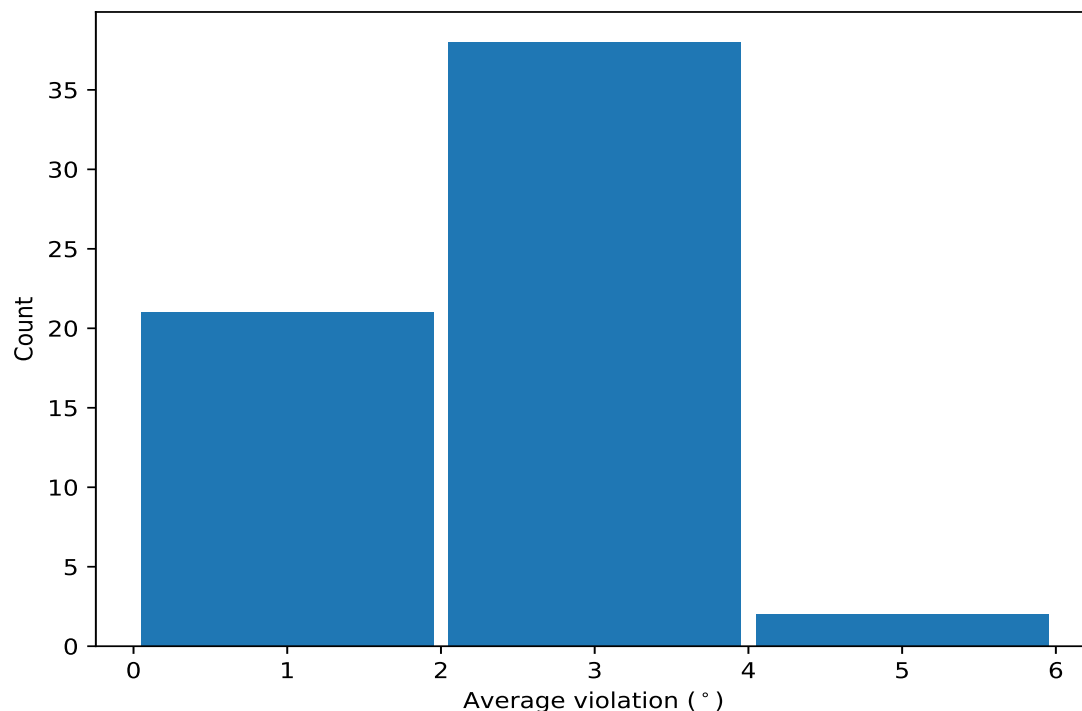


10.4 Most violated dihedral-angle restraints in the ensemble ⓘ

10.4.1 Histogram : Distribution of mean dihedral-angle violations ⓘ

The following histogram shows the distribution of the average value of the violation. The average is calculated for each restraint that is violated in more than one model over all the violated models

in the ensemble



10.4.2 Table: Most violated dihedral-angle restraints [i](#)

The following table provides the mean and the standard deviation of the violation for each restraint sorted by number of violated models and the mean value. The Key (restraint list ID, restraint ID) is the unique identifier for a given restraint.

Key	Atom-1	Atom-2	Atom-3	Atom-4	Models ¹	Mean	SD ²	Median
(1,119)	1:102:A:THR:C	1:103:A:VAL:N	1:103:A:VAL:CA	1:103:A:VAL:C	17	2.17	0.54	2.18
(1,128)	1:107:A:SER:N	1:107:A:SER:CA	1:107:A:SER:C	1:108:A:TRP:N	15	4.25	1.74	3.78
(1,110)	1:93:A:TYR:N	1:93:A:TYR:CA	1:93:A:TYR:C	1:94:A:SER:N	15	3.44	1.43	2.75
(1,108)	1:92:A:ILE:N	1:92:A:ILE:CA	1:92:A:ILE:C	1:93:A:TYR:N	15	2.3	0.73	2.37
(1,78)	1:67:A:THR:N	1:67:A:THR:CA	1:67:A:THR:C	1:68:A:ARG:N	14	2.99	1.46	2.81
(1,98)	1:83:A:SER:N	1:83:A:SER:CA	1:83:A:SER:C	1:84:A:VAL:N	13	2.56	1.04	2.4
(1,117)	1:101:A:GLY:C	1:102:A:THR:N	1:102:A:THR:CA	1:102:A:THR:C	11	1.89	0.83	1.44
(1,83)	1:69:A:SER:C	1:70:A:GLU:N	1:70:A:GLU:CA	1:70:A:GLU:C	10	2.62	1.27	2.12
(1,43)	1:40:A:CYS:C	1:41:A:TRP:N	1:41:A:TRP:CA	1:41:A:TRP:C	9	2.42	1.02	1.96
(1,99)	1:83:A:SER:C	1:84:A:VAL:N	1:84:A:VAL:CA	1:84:A:VAL:C	9	2.26	1.13	1.84
(1,38)	1:38:A:GLU:N	1:38:A:GLU:CA	1:38:A:GLU:C	1:39:A:LYS:N	8	2.68	1.33	2.36
(1,88)	1:74:A:ALA:N	1:74:A:ALA:CA	1:74:A:ALA:C	1:75:A:GLU:N	7	2.15	0.59	2.09
(1,127)	1:106:A:GLU:C	1:107:A:SER:N	1:107:A:SER:CA	1:107:A:SER:C	7	1.94	0.74	1.97
(1,77)	1:66:A:GLU:C	1:67:A:THR:N	1:67:A:THR:CA	1:67:A:THR:C	6	3.59	1.52	3.48
(1,113)	1:94:A:SER:C	1:95:A:MET:N	1:95:A:MET:CA	1:95:A:MET:C	6	2.96	1.37	3.16
(1,92)	1:80:A:PHE:N	1:80:A:PHE:CA	1:80:A:PHE:C	1:81:A:GLY:N	6	2.59	0.83	2.86
(1,114)	1:95:A:MET:N	1:95:A:MET:CA	1:95:A:MET:C	1:96:A:GLU:N	6	2.21	0.94	1.86
(1,124)	1:105:A:THR:N	1:105:A:THR:CA	1:105:A:THR:C	1:106:A:GLU:N	6	2.13	0.99	1.64
(1,18)	1:17:A:ILE:N	1:17:A:ILE:CA	1:17:A:ILE:C	1:18:A:ASN:N	6	1.97	0.59	2.2
(1,66)	1:59:A:VAL:N	1:59:A:VAL:CA	1:59:A:VAL:C	1:60:A:THR:N	5	3.18	1.3	2.69

Continued on next page...

Continued from previous page...

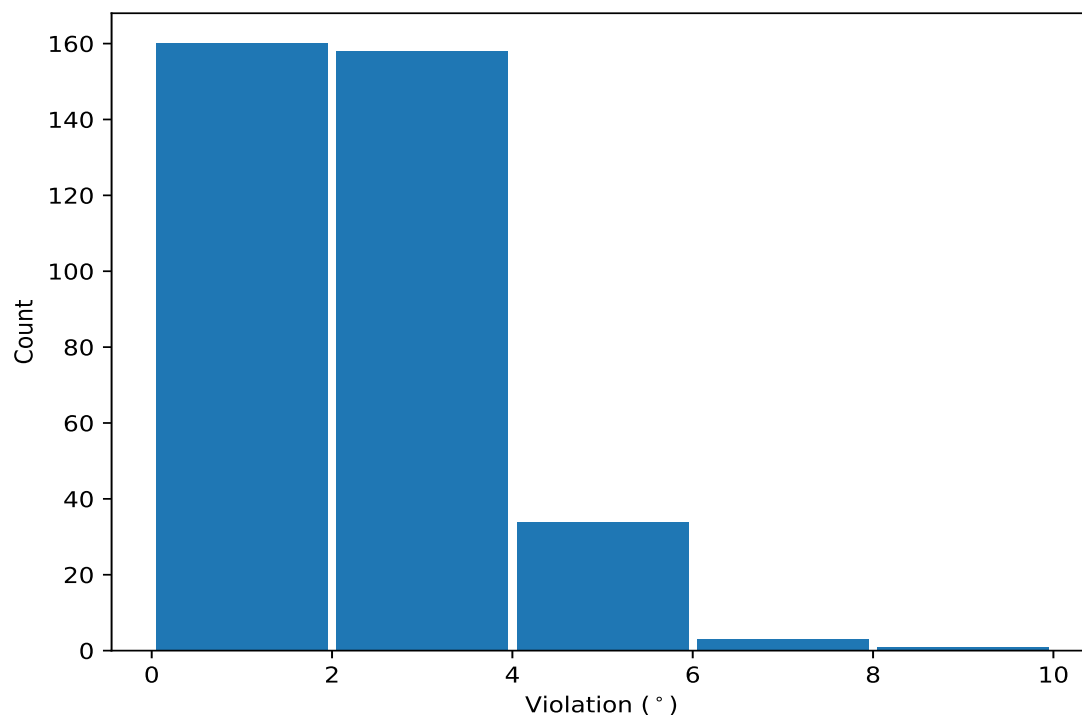
Key	Atom-1	Atom-2	Atom-3	Atom-4	Models ¹	Mean	SD ²	Median
(1,45)	1:41:A:TRP:C	1:42:A:TRP:N	1:42:A:TRP:CA	1:42:A:TRP:C	5	2.68	0.88	2.87
(1,60)	1:56:A:GLY:N	1:56:A:GLY:CA	1:56:A:GLY:C	1:57:A:ARG:N	5	2.68	0.75	2.53
(1,125)	1:105:A:THR:C	1:106:A:GLU:N	1:106:A:GLU:CA	1:106:A:GLU:C	5	2.61	0.94	2.92
(1,112)	1:94:A:SER:N	1:94:A:SER:CA	1:94:A:SER:C	1:95:A:MET:N	5	2.17	0.76	2.15
(1,2)	1:6:A:THR:N	1:6:A:THR:CA	1:6:A:THR:C	1:7:A:PHE:N	5	1.51	0.48	1.29
(1,53)	1:52:A:ALA:C	1:53:A:HIS:N	1:53:A:HIS:CA	1:53:A:HIS:C	4	3.25	1.55	2.72
(1,44)	1:41:A:TRP:N	1:41:A:TRP:CA	1:41:A:TRP:C	1:42:A:TRP:N	4	2.81	1.24	2.81
(1,133)	1:109:A:GLU:C	1:110:A:PHE:N	1:110:A:PHE:CA	1:110:A:PHE:C	4	2.6	1.24	2.2
(1,132)	1:109:A:GLU:N	1:109:A:GLU:CA	1:109:A:GLU:C	1:110:A:PHE:N	4	2.28	0.55	2.15
(1,129)	1:107:A:SER:C	1:108:A:TRP:N	1:108:A:TRP:CA	1:108:A:TRP:C	4	2.2	0.42	2.1
(1,80)	1:68:A:ARG:N	1:68:A:ARG:CA	1:68:A:ARG:C	1:69:A:SER:N	4	2.08	0.27	2.13
(1,61)	1:56:A:GLY:C	1:57:A:ARG:N	1:57:A:ARG:CA	1:57:A:ARG:C	4	2.03	0.32	2.07
(1,30)	1:23:A:LEU:N	1:23:A:LEU:CA	1:23:A:LEU:C	1:24:A:VAL:N	4	2.02	0.86	1.74
(1,130)	1:108:A:TRP:N	1:108:A:TRP:CA	1:108:A:TRP:C	1:109:A:GLU:N	4	1.92	0.57	2.1
(1,87)	1:73:A:VAL:C	1:74:A:ALA:N	1:74:A:ALA:CA	1:74:A:ALA:C	4	1.82	0.31	1.79
(1,42)	1:40:A:CYS:N	1:40:A:CYS:CA	1:40:A:CYS:C	1:41:A:TRP:N	4	1.78	0.39	1.72
(1,121)	1:103:A:VAL:C	1:104:A:LEU:N	1:104:A:LEU:CA	1:104:A:LEU:C	4	1.61	0.41	1.61
(1,63)	1:57:A:ARG:C	1:58:A:ASN:N	1:58:A:ASN:CA	1:58:A:ASN:C	4	1.56	0.32	1.58
(1,58)	1:55:A:THR:N	1:55:A:THR:CA	1:55:A:THR:C	1:56:A:GLY:N	3	4.87	0.09	4.87
(1,56)	1:54:A:PHE:N	1:54:A:PHE:CA	1:54:A:PHE:C	1:55:A:THR:N	3	3.28	0.11	3.27
(1,40)	1:39:A:LYS:N	1:39:A:LYS:CA	1:39:A:LYS:C	1:40:A:CYS:N	3	2.6	0.82	2.26
(1,90)	1:79:A:CYS:N	1:79:A:CYS:CA	1:79:A:CYS:C	1:80:A:PHE:N	3	2.59	1.37	2.39
(1,91)	1:79:A:CYS:C	1:80:A:PHE:N	1:80:A:PHE:CA	1:80:A:PHE:C	3	2.39	0.6	2.79
(1,33)	1:35:A:PRO:C	1:36:A:VAL:N	1:36:A:VAL:CA	1:36:A:VAL:C	3	2.33	0.79	2.47
(1,41)	1:39:A:LYS:C	1:40:A:CYS:N	1:40:A:CYS:CA	1:40:A:CYS:C	3	2.13	0.91	1.74
(1,48)	1:43:A:ASP:N	1:43:A:ASP:CA	1:43:A:ASP:C	1:44:A:GLU:N	3	2.05	0.6	2.34
(1,82)	1:69:A:SER:N	1:69:A:SER:CA	1:69:A:SER:C	1:70:A:GLU:N	3	1.92	0.68	1.84
(1,180)	1:138:A:ILE:N	1:138:A:ILE:CA	1:138:A:ILE:C	1:139:A:THR:N	3	1.75	0.44	1.74
(1,126)	1:106:A:GLU:N	1:106:A:GLU:CA	1:106:A:GLU:C	1:107:A:SER:N	3	1.7	0.35	1.56
(1,62)	1:57:A:ARG:N	1:57:A:ARG:CA	1:57:A:ARG:C	1:58:A:ASN:N	3	1.59	0.47	1.35
(1,181)	1:138:A:ILE:C	1:139:A:THR:N	1:139:A:THR:CA	1:139:A:THR:C	3	1.33	0.22	1.31
(1,64)	1:58:A:ASN:N	1:58:A:ASN:CA	1:58:A:ASN:C	1:59:A:VAL:N	2	2.7	0.88	2.7
(1,54)	1:53:A:HIS:N	1:53:A:HIS:CA	1:53:A:HIS:C	1:54:A:PHE:N	2	2.47	0.53	2.47
(1,75)	1:65:A:TRP:C	1:66:A:GLU:N	1:66:A:GLU:CA	1:66:A:GLU:C	2	2.24	0.23	2.24
(1,102)	1:89:A:VAL:N	1:89:A:VAL:CA	1:89:A:VAL:C	1:90:A:LYS:N	2	1.87	0.08	1.87
(1,50)	1:44:A:GLU:N	1:44:A:GLU:CA	1:44:A:GLU:C	1:45:A:ASP:N	2	1.62	0.5	1.62
(1,81)	1:68:A:ARG:C	1:69:A:SER:N	1:69:A:SER:CA	1:69:A:SER:C	2	1.5	0.31	1.5
(1,107)	1:91:A:TRP:C	1:92:A:ILE:N	1:92:A:ILE:CA	1:92:A:ILE:C	2	1.32	0.2	1.32
(1,70)	1:63:A:ARG:N	1:63:A:ARG:CA	1:63:A:ARG:C	1:64:A:THR:N	2	1.31	0.19	1.31
(1,123)	1:104:A:LEU:C	1:105:A:THR:N	1:105:A:THR:CA	1:105:A:THR:C	2	1.18	0.16	1.18
(1,32)	1:24:A:VAL:N	1:24:A:VAL:CA	1:24:A:VAL:C	1:25:A:SER:N	2	1.18	0.15	1.18

¹ Number of violated models, ²Standard deviation, All angle values are in degree (°)

10.5 All violated dihedral-angle restraints [i](#)

10.5.1 Histogram : Distribution of violations [i](#)

The following histogram shows the distribution of the absolute value of the violation for all violated restraints in the ensemble.



10.5.2 Table: All violated dihedral-angle restraints [i](#)

The following table lists the absolute value of the violation for each restraint in the ensemble sorted by its value. The Key (restraint list ID, restraint ID) is the unique identifier for a given restraint.

Key	Atom-1	Atom-2	Atom-3	Atom-4	Model ID	Violation (°)
(1,128)	1:107:A:SER:N	1:107:A:SER:CA	1:107:A:SER:C	1:108:A:TRP:N	2	8.12
(1,128)	1:107:A:SER:N	1:107:A:SER:CA	1:107:A:SER:C	1:108:A:TRP:N	4	6.71
(1,77)	1:66:A:GLU:C	1:67:A:THR:N	1:67:A:THR:CA	1:67:A:THR:C	6	6.23
(1,78)	1:67:A:THR:N	1:67:A:THR:CA	1:67:A:THR:C	1:68:A:ARG:N	10	6.11
(1,110)	1:93:A:TYR:N	1:93:A:TYR:CA	1:93:A:TYR:C	1:94:A:SER:N	3	5.96
(1,128)	1:107:A:SER:N	1:107:A:SER:CA	1:107:A:SER:C	1:108:A:TRP:N	6	5.87
(1,53)	1:52:A:ALA:C	1:53:A:HIS:N	1:53:A:HIS:CA	1:53:A:HIS:C	5	5.83
(1,38)	1:38:A:GLU:N	1:38:A:GLU:CA	1:38:A:GLU:C	1:39:A:LYS:N	10	5.75
(1,66)	1:59:A:VAL:N	1:59:A:VAL:CA	1:59:A:VAL:C	1:60:A:THR:N	3	5.71
(1,128)	1:107:A:SER:N	1:107:A:SER:CA	1:107:A:SER:C	1:108:A:TRP:N	7	5.65
(1,78)	1:67:A:THR:N	1:67:A:THR:CA	1:67:A:THR:C	1:68:A:ARG:N	20	5.63
(1,128)	1:107:A:SER:N	1:107:A:SER:CA	1:107:A:SER:C	1:108:A:TRP:N	9	5.54
(1,83)	1:69:A:SER:C	1:70:A:GLU:N	1:70:A:GLU:CA	1:70:A:GLU:C	1	5.44
(1,113)	1:94:A:SER:C	1:95:A:MET:N	1:95:A:MET:CA	1:95:A:MET:C	2	5.31

Continued on next page...

Continued from previous page...

Key	Atom-1	Atom-2	Atom-3	Atom-4	Model ID	Violation (°)
(1,110)	1:93:A:TYR:N	1:93:A:TYR:CA	1:93:A:TYR:C	1:94:A:SER:N	18	5.3
(1,110)	1:93:A:TYR:N	1:93:A:TYR:CA	1:93:A:TYR:C	1:94:A:SER:N	7	5.17
(1,156)	1:126:A:SER:N	1:126:A:SER:CA	1:126:A:SER:C	1:127:A:ILE:N	1	4.99
(1,58)	1:55:A:THR:N	1:55:A:THR:CA	1:55:A:THR:C	1:56:A:GLY:N	6	4.98
(1,58)	1:55:A:THR:N	1:55:A:THR:CA	1:55:A:THR:C	1:56:A:GLY:N	3	4.87
(1,214)	1:156:A:LEU:N	1:156:A:LEU:CA	1:156:A:LEU:C	1:157:A:GLU:N	15	4.78
(1,58)	1:55:A:THR:N	1:55:A:THR:CA	1:55:A:THR:C	1:56:A:GLY:N	14	4.76
(1,110)	1:93:A:TYR:N	1:93:A:TYR:CA	1:93:A:TYR:C	1:94:A:SER:N	14	4.74
(1,110)	1:93:A:TYR:N	1:93:A:TYR:CA	1:93:A:TYR:C	1:94:A:SER:N	13	4.65
(1,178)	1:137:A:ALA:N	1:137:A:ALA:CA	1:137:A:ALA:C	1:138:A:ILE:N	15	4.61
(1,133)	1:109:A:GLU:C	1:110:A:PHE:N	1:110:A:PHE:CA	1:110:A:PHE:C	18	4.61
(1,44)	1:41:A:TRP:N	1:41:A:TRP:CA	1:41:A:TRP:C	1:42:A:TRP:N	17	4.49
(1,128)	1:107:A:SER:N	1:107:A:SER:CA	1:107:A:SER:C	1:108:A:TRP:N	14	4.44
(1,90)	1:79:A:CYS:N	1:79:A:CYS:CA	1:79:A:CYS:C	1:80:A:PHE:N	9	4.35
(1,110)	1:93:A:TYR:N	1:93:A:TYR:CA	1:93:A:TYR:C	1:94:A:SER:N	12	4.28
(1,77)	1:66:A:GLU:C	1:67:A:THR:N	1:67:A:THR:CA	1:67:A:THR:C	10	4.27
(1,99)	1:83:A:SER:C	1:84:A:VAL:N	1:84:A:VAL:CA	1:84:A:VAL:C	18	4.25
(1,114)	1:95:A:MET:N	1:95:A:MET:CA	1:95:A:MET:C	1:96:A:GLU:N	1	4.24
(1,98)	1:83:A:SER:N	1:83:A:SER:CA	1:83:A:SER:C	1:84:A:VAL:N	15	4.22
(1,98)	1:83:A:SER:N	1:83:A:SER:CA	1:83:A:SER:C	1:84:A:VAL:N	20	4.21
(1,83)	1:69:A:SER:C	1:70:A:GLU:N	1:70:A:GLU:CA	1:70:A:GLU:C	3	4.2
(1,77)	1:66:A:GLU:C	1:67:A:THR:N	1:67:A:THR:CA	1:67:A:THR:C	17	4.12
(1,43)	1:40:A:CYS:C	1:41:A:TRP:N	1:41:A:TRP:CA	1:41:A:TRP:C	8	4.12
(1,128)	1:107:A:SER:N	1:107:A:SER:CA	1:107:A:SER:C	1:108:A:TRP:N	12	4.05
(1,60)	1:56:A:GLY:N	1:56:A:GLY:CA	1:56:A:GLY:C	1:57:A:ARG:N	3	3.9
(1,98)	1:83:A:SER:N	1:83:A:SER:CA	1:83:A:SER:C	1:84:A:VAL:N	7	3.79
(1,128)	1:107:A:SER:N	1:107:A:SER:CA	1:107:A:SER:C	1:108:A:TRP:N	16	3.78
(1,78)	1:67:A:THR:N	1:67:A:THR:CA	1:67:A:THR:C	1:68:A:ARG:N	13	3.78
(1,78)	1:67:A:THR:N	1:67:A:THR:CA	1:67:A:THR:C	1:68:A:ARG:N	6	3.76
(1,128)	1:107:A:SER:N	1:107:A:SER:CA	1:107:A:SER:C	1:108:A:TRP:N	1	3.75
(1,40)	1:39:A:LYS:N	1:39:A:LYS:CA	1:39:A:LYS:C	1:40:A:CYS:N	5	3.73
(1,78)	1:67:A:THR:N	1:67:A:THR:CA	1:67:A:THR:C	1:68:A:ARG:N	19	3.7
(1,99)	1:83:A:SER:C	1:84:A:VAL:N	1:84:A:VAL:CA	1:84:A:VAL:C	3	3.69
(1,45)	1:41:A:TRP:C	1:42:A:TRP:N	1:42:A:TRP:CA	1:42:A:TRP:C	9	3.68
(1,125)	1:105:A:THR:C	1:106:A:GLU:N	1:106:A:GLU:CA	1:106:A:GLU:C	2	3.64
(1,38)	1:38:A:GLU:N	1:38:A:GLU:CA	1:38:A:GLU:C	1:39:A:LYS:N	20	3.61
(1,64)	1:58:A:ASN:N	1:58:A:ASN:CA	1:58:A:ASN:C	1:59:A:VAL:N	18	3.58
(1,140)	1:115:A:GLN:N	1:115:A:GLN:CA	1:115:A:GLN:C	1:116:A:ARG:N	2	3.56
(1,110)	1:93:A:TYR:N	1:93:A:TYR:CA	1:93:A:TYR:C	1:94:A:SER:N	1	3.54
(1,43)	1:40:A:CYS:C	1:41:A:TRP:N	1:41:A:TRP:CA	1:41:A:TRP:C	14	3.54
(1,124)	1:105:A:THR:N	1:105:A:THR:CA	1:105:A:THR:C	1:106:A:GLU:N	9	3.53
(1,83)	1:69:A:SER:C	1:70:A:GLU:N	1:70:A:GLU:CA	1:70:A:GLU:C	8	3.53
(1,113)	1:94:A:SER:C	1:95:A:MET:N	1:95:A:MET:CA	1:95:A:MET:C	13	3.52
(1,117)	1:101:A:GLY:C	1:102:A:THR:N	1:102:A:THR:CA	1:102:A:THR:C	17	3.5
(1,92)	1:80:A:PHE:N	1:80:A:PHE:CA	1:80:A:PHE:C	1:81:A:GLY:N	18	3.49
(1,125)	1:105:A:THR:C	1:106:A:GLU:N	1:106:A:GLU:CA	1:106:A:GLU:C	6	3.48
(1,124)	1:105:A:THR:N	1:105:A:THR:CA	1:105:A:THR:C	1:106:A:GLU:N	13	3.48
(1,99)	1:83:A:SER:C	1:84:A:VAL:N	1:84:A:VAL:CA	1:84:A:VAL:C	15	3.46
(1,43)	1:40:A:CYS:C	1:41:A:TRP:N	1:41:A:TRP:CA	1:41:A:TRP:C	11	3.44
(1,30)	1:23:A:LEU:N	1:23:A:LEU:CA	1:23:A:LEU:C	1:24:A:VAL:N	3	3.44
(1,14)	1:12:A:ASN:N	1:12:A:ASN:CA	1:12:A:ASN:C	1:13:A:ILE:N	2	3.44

Continued on next page...

Continued from previous page...

Key	Atom-1	Atom-2	Atom-3	Atom-4	Model ID	Violation (°)
(1,127)	1:106:A:GLU:C	1:107:A:SER:N	1:107:A:SER:CA	1:107:A:SER:C	5	3.43
(1,56)	1:54:A:PHE:N	1:54:A:PHE:CA	1:54:A:PHE:C	1:55:A:THR:N	14	3.42
(1,47)	1:42:A:TRP:C	1:43:A:ASP:N	1:43:A:ASP:CA	1:43:A:ASP:C	20	3.39
(1,41)	1:39:A:LYS:C	1:40:A:CYS:N	1:40:A:CYS:CA	1:40:A:CYS:C	8	3.39
(1,44)	1:41:A:TRP:N	1:41:A:TRP:CA	1:41:A:TRP:C	1:42:A:TRP:N	6	3.35
(1,92)	1:80:A:PHE:N	1:80:A:PHE:CA	1:80:A:PHE:C	1:81:A:GLY:N	11	3.33
(1,138)	1:114:A:GLY:N	1:114:A:GLY:CA	1:114:A:GLY:C	1:115:A:GLN:N	5	3.28
(1,128)	1:107:A:SER:N	1:107:A:SER:CA	1:107:A:SER:C	1:108:A:TRP:N	19	3.28
(1,78)	1:67:A:THR:N	1:67:A:THR:CA	1:67:A:THR:C	1:68:A:ARG:N	17	3.28
(1,56)	1:54:A:PHE:N	1:54:A:PHE:CA	1:54:A:PHE:C	1:55:A:THR:N	6	3.27
(1,112)	1:94:A:SER:N	1:94:A:SER:CA	1:94:A:SER:C	1:95:A:MET:N	16	3.24
(1,108)	1:92:A:ILE:N	1:92:A:ILE:CA	1:92:A:ILE:C	1:93:A:TYR:N	7	3.23
(1,33)	1:35:A:PRO:C	1:36:A:VAL:N	1:36:A:VAL:CA	1:36:A:VAL:C	4	3.22
(1,113)	1:94:A:SER:C	1:95:A:MET:N	1:95:A:MET:CA	1:95:A:MET:C	20	3.21
(1,108)	1:92:A:ILE:N	1:92:A:ILE:CA	1:92:A:ILE:C	1:93:A:TYR:N	9	3.19
(1,92)	1:80:A:PHE:N	1:80:A:PHE:CA	1:80:A:PHE:C	1:81:A:GLY:N	16	3.17
(1,119)	1:102:A:THR:C	1:103:A:VAL:N	1:103:A:VAL:CA	1:103:A:VAL:C	3	3.14
(1,56)	1:54:A:PHE:N	1:54:A:PHE:CA	1:54:A:PHE:C	1:55:A:THR:N	2	3.14
(1,117)	1:101:A:GLY:C	1:102:A:THR:N	1:102:A:THR:CA	1:102:A:THR:C	5	3.13
(1,45)	1:41:A:TRP:C	1:42:A:TRP:N	1:42:A:TRP:CA	1:42:A:TRP:C	6	3.13
(1,115)	1:95:A:MET:C	1:96:A:GLU:N	1:96:A:GLU:CA	1:96:A:GLU:C	10	3.12
(1,113)	1:94:A:SER:C	1:95:A:MET:N	1:95:A:MET:CA	1:95:A:MET:C	10	3.11
(1,60)	1:56:A:GLY:N	1:56:A:GLY:CA	1:56:A:GLY:C	1:57:A:ARG:N	14	3.11
(1,88)	1:74:A:ALA:N	1:74:A:ALA:CA	1:74:A:ALA:C	1:75:A:GLU:N	12	3.09
(1,132)	1:109:A:GLU:N	1:109:A:GLU:CA	1:109:A:GLU:C	1:110:A:PHE:N	19	3.07
(1,108)	1:92:A:ILE:N	1:92:A:ILE:CA	1:92:A:ILE:C	1:93:A:TYR:N	18	3.03
(1,66)	1:59:A:VAL:N	1:59:A:VAL:CA	1:59:A:VAL:C	1:60:A:THR:N	8	3.03
(1,98)	1:83:A:SER:N	1:83:A:SER:CA	1:83:A:SER:C	1:84:A:VAL:N	17	3.02
(1,108)	1:92:A:ILE:N	1:92:A:ILE:CA	1:92:A:ILE:C	1:93:A:TYR:N	17	3.01
(1,98)	1:83:A:SER:N	1:83:A:SER:CA	1:83:A:SER:C	1:84:A:VAL:N	9	3.01
(1,54)	1:53:A:HIS:N	1:53:A:HIS:CA	1:53:A:HIS:C	1:54:A:PHE:N	4	3.01
(1,119)	1:102:A:THR:C	1:103:A:VAL:N	1:103:A:VAL:CA	1:103:A:VAL:C	2	3.0
(1,98)	1:83:A:SER:N	1:83:A:SER:CA	1:83:A:SER:C	1:84:A:VAL:N	8	3.0
(1,119)	1:102:A:THR:C	1:103:A:VAL:N	1:103:A:VAL:CA	1:103:A:VAL:C	15	2.99
(1,117)	1:101:A:GLY:C	1:102:A:THR:N	1:102:A:THR:CA	1:102:A:THR:C	16	2.95
(1,108)	1:92:A:ILE:N	1:92:A:ILE:CA	1:92:A:ILE:C	1:93:A:TYR:N	4	2.93
(1,78)	1:67:A:THR:N	1:67:A:THR:CA	1:67:A:THR:C	1:68:A:ARG:N	14	2.93
(1,125)	1:105:A:THR:C	1:106:A:GLU:N	1:106:A:GLU:CA	1:106:A:GLU:C	4	2.92
(1,53)	1:52:A:ALA:C	1:53:A:HIS:N	1:53:A:HIS:CA	1:53:A:HIS:C	8	2.92
(1,88)	1:74:A:ALA:N	1:74:A:ALA:CA	1:74:A:ALA:C	1:75:A:GLU:N	11	2.9
(1,128)	1:107:A:SER:N	1:107:A:SER:CA	1:107:A:SER:C	1:108:A:TRP:N	10	2.87
(1,45)	1:41:A:TRP:C	1:42:A:TRP:N	1:42:A:TRP:CA	1:42:A:TRP:C	19	2.87
(1,129)	1:107:A:SER:C	1:108:A:TRP:N	1:108:A:TRP:CA	1:108:A:TRP:C	5	2.84
(1,91)	1:79:A:CYS:C	1:80:A:PHE:N	1:80:A:PHE:CA	1:80:A:PHE:C	4	2.84
(1,77)	1:66:A:GLU:C	1:67:A:THR:N	1:67:A:THR:CA	1:67:A:THR:C	19	2.84
(1,108)	1:92:A:ILE:N	1:92:A:ILE:CA	1:92:A:ILE:C	1:93:A:TYR:N	1	2.82
(1,18)	1:17:A:ILE:N	1:17:A:ILE:CA	1:17:A:ILE:C	1:18:A:ASN:N	14	2.8
(1,91)	1:79:A:CYS:C	1:80:A:PHE:N	1:80:A:PHE:CA	1:80:A:PHE:C	13	2.79
(1,82)	1:69:A:SER:N	1:69:A:SER:CA	1:69:A:SER:C	1:70:A:GLU:N	12	2.79
(1,128)	1:107:A:SER:N	1:107:A:SER:CA	1:107:A:SER:C	1:108:A:TRP:N	3	2.77
(1,128)	1:107:A:SER:N	1:107:A:SER:CA	1:107:A:SER:C	1:108:A:TRP:N	13	2.76

Continued on next page...

Continued from previous page...

Key	Atom-1	Atom-2	Atom-3	Atom-4	Model ID	Violation (°)
(1,112)	1:94:A:SER:N	1:94:A:SER:CA	1:94:A:SER:C	1:95:A:MET:N	18	2.76
(1,43)	1:40:A:CYS:C	1:41:A:TRP:N	1:41:A:TRP:CA	1:41:A:TRP:C	13	2.76
(1,119)	1:102:A:THR:C	1:103:A:VAL:N	1:103:A:VAL:CA	1:103:A:VAL:C	11	2.75
(1,110)	1:93:A:TYR:N	1:93:A:TYR:CA	1:93:A:TYR:C	1:94:A:SER:N	15	2.75
(1,110)	1:93:A:TYR:N	1:93:A:TYR:CA	1:93:A:TYR:C	1:94:A:SER:N	11	2.74
(1,128)	1:107:A:SER:N	1:107:A:SER:CA	1:107:A:SER:C	1:108:A:TRP:N	17	2.7
(1,78)	1:67:A:THR:N	1:67:A:THR:CA	1:67:A:THR:C	1:68:A:ARG:N	11	2.69
(1,66)	1:59:A:VAL:N	1:59:A:VAL:CA	1:59:A:VAL:C	1:60:A:THR:N	13	2.69
(1,45)	1:41:A:TRP:C	1:42:A:TRP:N	1:42:A:TRP:CA	1:42:A:TRP:C	15	2.69
(1,135)	1:110:A:PHE:C	1:111:A:THR:N	1:111:A:THR:CA	1:111:A:THR:C	9	2.68
(1,77)	1:66:A:GLU:C	1:67:A:THR:N	1:67:A:THR:CA	1:67:A:THR:C	11	2.65
(1,133)	1:109:A:GLU:C	1:110:A:PHE:N	1:110:A:PHE:CA	1:110:A:PHE:C	2	2.6
(1,48)	1:43:A:ASP:N	1:43:A:ASP:CA	1:43:A:ASP:C	1:44:A:GLU:N	20	2.59
(1,38)	1:38:A:GLU:N	1:38:A:GLU:CA	1:38:A:GLU:C	1:39:A:LYS:N	18	2.56
(1,92)	1:80:A:PHE:N	1:80:A:PHE:CA	1:80:A:PHE:C	1:81:A:GLY:N	13	2.55
(1,132)	1:109:A:GLU:N	1:109:A:GLU:CA	1:109:A:GLU:C	1:110:A:PHE:N	15	2.53
(1,110)	1:93:A:TYR:N	1:93:A:TYR:CA	1:93:A:TYR:C	1:94:A:SER:N	4	2.53
(1,60)	1:56:A:GLY:N	1:56:A:GLY:CA	1:56:A:GLY:C	1:57:A:ARG:N	7	2.53
(1,110)	1:93:A:TYR:N	1:93:A:TYR:CA	1:93:A:TYR:C	1:94:A:SER:N	5	2.52
(1,53)	1:52:A:ALA:C	1:53:A:HIS:N	1:53:A:HIS:CA	1:53:A:HIS:C	10	2.52
(1,108)	1:92:A:ILE:N	1:92:A:ILE:CA	1:92:A:ILE:C	1:93:A:TYR:N	15	2.51
(1,38)	1:38:A:GLU:N	1:38:A:GLU:CA	1:38:A:GLU:C	1:39:A:LYS:N	5	2.48
(1,33)	1:35:A:PRO:C	1:36:A:VAL:N	1:36:A:VAL:CA	1:36:A:VAL:C	14	2.47
(1,130)	1:108:A:TRP:N	1:108:A:TRP:CA	1:108:A:TRP:C	1:109:A:GLU:N	15	2.46
(1,75)	1:65:A:TRP:C	1:66:A:GLU:N	1:66:A:GLU:CA	1:66:A:GLU:C	20	2.46
(1,110)	1:93:A:TYR:N	1:93:A:TYR:CA	1:93:A:TYR:C	1:94:A:SER:N	17	2.42
(1,98)	1:83:A:SER:N	1:83:A:SER:CA	1:83:A:SER:C	1:84:A:VAL:N	2	2.4
(1,80)	1:68:A:ARG:N	1:68:A:ARG:CA	1:68:A:ARG:C	1:69:A:SER:N	19	2.4
(1,90)	1:79:A:CYS:N	1:79:A:CYS:CA	1:79:A:CYS:C	1:80:A:PHE:N	13	2.39
(1,83)	1:69:A:SER:C	1:70:A:GLU:N	1:70:A:GLU:CA	1:70:A:GLU:C	11	2.39
(1,61)	1:56:A:GLY:C	1:57:A:ARG:N	1:57:A:ARG:CA	1:57:A:ARG:C	18	2.39
(1,108)	1:92:A:ILE:N	1:92:A:ILE:CA	1:92:A:ILE:C	1:93:A:TYR:N	11	2.37
(1,2)	1:6:A:THR:N	1:6:A:THR:CA	1:6:A:THR:C	1:7:A:PHE:N	5	2.36
(1,148)	1:119:A:HIS:N	1:119:A:HIS:CA	1:119:A:HIS:C	1:120:A:ASP:N	3	2.35
(1,130)	1:108:A:TRP:N	1:108:A:TRP:CA	1:108:A:TRP:C	1:109:A:GLU:N	19	2.34
(1,48)	1:43:A:ASP:N	1:43:A:ASP:CA	1:43:A:ASP:C	1:44:A:GLU:N	14	2.34
(1,119)	1:102:A:THR:C	1:103:A:VAL:N	1:103:A:VAL:CA	1:103:A:VAL:C	13	2.33
(1,110)	1:93:A:TYR:N	1:93:A:TYR:CA	1:93:A:TYR:C	1:94:A:SER:N	9	2.33
(1,97)	1:82:A:TRP:C	1:83:A:SER:N	1:83:A:SER:CA	1:83:A:SER:C	19	2.33
(1,108)	1:92:A:ILE:N	1:92:A:ILE:CA	1:92:A:ILE:C	1:93:A:TYR:N	16	2.32
(1,98)	1:83:A:SER:N	1:83:A:SER:CA	1:83:A:SER:C	1:84:A:VAL:N	19	2.31
(1,72)	1:64:A:THR:N	1:64:A:THR:CA	1:64:A:THR:C	1:65:A:TRP:N	6	2.31
(1,119)	1:102:A:THR:C	1:103:A:VAL:N	1:103:A:VAL:CA	1:103:A:VAL:C	7	2.3
(1,180)	1:138:A:ILE:N	1:138:A:ILE:CA	1:138:A:ILE:C	1:139:A:THR:N	2	2.29
(1,119)	1:102:A:THR:C	1:103:A:VAL:N	1:103:A:VAL:CA	1:103:A:VAL:C	9	2.29
(1,42)	1:40:A:CYS:N	1:40:A:CYS:CA	1:40:A:CYS:C	1:41:A:TRP:N	9	2.29
(1,129)	1:107:A:SER:C	1:108:A:TRP:N	1:108:A:TRP:CA	1:108:A:TRP:C	10	2.28
(1,66)	1:59:A:VAL:N	1:59:A:VAL:CA	1:59:A:VAL:C	1:60:A:THR:N	9	2.28
(1,127)	1:106:A:GLU:C	1:107:A:SER:N	1:107:A:SER:CA	1:107:A:SER:C	9	2.27
(1,61)	1:56:A:GLY:C	1:57:A:ARG:N	1:57:A:ARG:CA	1:57:A:ARG:C	9	2.27
(1,44)	1:41:A:TRP:N	1:41:A:TRP:CA	1:41:A:TRP:C	1:42:A:TRP:N	14	2.27

Continued on next page...

Continued from previous page...

Key	Atom-1	Atom-2	Atom-3	Atom-4	Model ID	Violation (°)
(1,40)	1:39:A:LYS:N	1:39:A:LYS:CA	1:39:A:LYS:C	1:40:A:CYS:N	2	2.26
(1,114)	1:95:A:MET:N	1:95:A:MET:CA	1:95:A:MET:C	1:96:A:GLU:N	3	2.25
(1,62)	1:57:A:ARG:N	1:57:A:ARG:CA	1:57:A:ARG:C	1:58:A:ASN:N	8	2.25
(1,18)	1:17:A:ILE:N	1:17:A:ILE:CA	1:17:A:ILE:C	1:18:A:ASN:N	13	2.25
(1,78)	1:67:A:THR:N	1:67:A:THR:CA	1:67:A:THR:C	1:68:A:ARG:N	4	2.23
(1,38)	1:38:A:GLU:N	1:38:A:GLU:CA	1:38:A:GLU:C	1:39:A:LYS:N	14	2.23
(1,119)	1:102:A:THR:C	1:103:A:VAL:N	1:103:A:VAL:CA	1:103:A:VAL:C	19	2.22
(1,80)	1:68:A:ARG:N	1:68:A:ARG:CA	1:68:A:ARG:C	1:69:A:SER:N	4	2.22
(1,18)	1:17:A:ILE:N	1:17:A:ILE:CA	1:17:A:ILE:C	1:18:A:ASN:N	18	2.21
(1,87)	1:73:A:VAL:C	1:74:A:ALA:N	1:74:A:ALA:CA	1:74:A:ALA:C	6	2.2
(1,83)	1:69:A:SER:C	1:70:A:GLU:N	1:70:A:GLU:CA	1:70:A:GLU:C	5	2.2
(1,88)	1:74:A:ALA:N	1:74:A:ALA:CA	1:74:A:ALA:C	1:75:A:GLU:N	1	2.19
(1,66)	1:59:A:VAL:N	1:59:A:VAL:CA	1:59:A:VAL:C	1:60:A:THR:N	10	2.19
(1,18)	1:17:A:ILE:N	1:17:A:ILE:CA	1:17:A:ILE:C	1:18:A:ASN:N	8	2.19
(1,126)	1:106:A:GLU:N	1:106:A:GLU:CA	1:106:A:GLU:C	1:107:A:SER:N	11	2.18
(1,119)	1:102:A:THR:C	1:103:A:VAL:N	1:103:A:VAL:CA	1:103:A:VAL:C	6	2.18
(1,108)	1:92:A:ILE:N	1:92:A:ILE:CA	1:92:A:ILE:C	1:93:A:TYR:N	3	2.18
(1,121)	1:103:A:VAL:C	1:104:A:LEU:N	1:104:A:LEU:CA	1:104:A:LEU:C	11	2.17
(1,127)	1:106:A:GLU:C	1:107:A:SER:N	1:107:A:SER:CA	1:107:A:SER:C	19	2.16
(1,119)	1:102:A:THR:C	1:103:A:VAL:N	1:103:A:VAL:CA	1:103:A:VAL:C	16	2.15
(1,112)	1:94:A:SER:N	1:94:A:SER:CA	1:94:A:SER:C	1:95:A:MET:N	15	2.15
(1,50)	1:44:A:GLU:N	1:44:A:GLU:CA	1:44:A:GLU:C	1:45:A:ASP:N	19	2.13
(1,88)	1:74:A:ALA:N	1:74:A:ALA:CA	1:74:A:ALA:C	1:75:A:GLU:N	5	2.09
(1,87)	1:73:A:VAL:C	1:74:A:ALA:N	1:74:A:ALA:CA	1:74:A:ALA:C	2	2.06
(1,80)	1:68:A:ARG:N	1:68:A:ARG:CA	1:68:A:ARG:C	1:69:A:SER:N	13	2.05
(1,83)	1:69:A:SER:C	1:70:A:GLU:N	1:70:A:GLU:CA	1:70:A:GLU:C	15	2.04
(1,42)	1:40:A:CYS:N	1:40:A:CYS:CA	1:40:A:CYS:C	1:41:A:TRP:N	4	2.02
(1,119)	1:102:A:THR:C	1:103:A:VAL:N	1:103:A:VAL:CA	1:103:A:VAL:C	4	2.01
(1,75)	1:65:A:TRP:C	1:66:A:GLU:N	1:66:A:GLU:CA	1:66:A:GLU:C	17	2.01
(1,127)	1:106:A:GLU:C	1:107:A:SER:N	1:107:A:SER:CA	1:107:A:SER:C	16	1.97
(1,100)	1:84:A:VAL:N	1:84:A:VAL:CA	1:84:A:VAL:C	1:85:A:THR:N	20	1.97
(1,60)	1:56:A:GLY:N	1:56:A:GLY:CA	1:56:A:GLY:C	1:57:A:ARG:N	13	1.97
(1,43)	1:40:A:CYS:C	1:41:A:TRP:N	1:41:A:TRP:CA	1:41:A:TRP:C	18	1.96
(1,114)	1:95:A:MET:N	1:95:A:MET:CA	1:95:A:MET:C	1:96:A:GLU:N	15	1.95
(1,102)	1:89:A:VAL:N	1:89:A:VAL:CA	1:89:A:VAL:C	1:90:A:LYS:N	7	1.95
(1,54)	1:53:A:HIS:N	1:53:A:HIS:CA	1:53:A:HIS:C	1:54:A:PHE:N	17	1.94
(1,129)	1:107:A:SER:C	1:108:A:TRP:N	1:108:A:TRP:CA	1:108:A:TRP:C	11	1.93
(1,43)	1:40:A:CYS:C	1:41:A:TRP:N	1:41:A:TRP:CA	1:41:A:TRP:C	3	1.93
(1,99)	1:83:A:SER:C	1:84:A:VAL:N	1:84:A:VAL:CA	1:84:A:VAL:C	4	1.91
(1,63)	1:57:A:ARG:C	1:58:A:ASN:N	1:58:A:ASN:CA	1:58:A:ASN:C	18	1.91
(1,98)	1:83:A:SER:N	1:83:A:SER:CA	1:83:A:SER:C	1:84:A:VAL:N	5	1.9
(1,60)	1:56:A:GLY:N	1:56:A:GLY:CA	1:56:A:GLY:C	1:57:A:ARG:N	4	1.9
(1,78)	1:67:A:THR:N	1:67:A:THR:CA	1:67:A:THR:C	1:68:A:ARG:N	16	1.89
(1,130)	1:108:A:TRP:N	1:108:A:TRP:CA	1:108:A:TRP:C	1:109:A:GLU:N	14	1.87
(1,61)	1:56:A:GLY:C	1:57:A:ARG:N	1:57:A:ARG:CA	1:57:A:ARG:C	6	1.87
(1,35)	1:36:A:VAL:C	1:37:A:CYS:N	1:37:A:CYS:CA	1:37:A:CYS:C	6	1.86
(1,30)	1:23:A:LEU:N	1:23:A:LEU:CA	1:23:A:LEU:C	1:24:A:VAL:N	20	1.86
(1,99)	1:83:A:SER:C	1:84:A:VAL:N	1:84:A:VAL:CA	1:84:A:VAL:C	9	1.84
(1,82)	1:69:A:SER:N	1:69:A:SER:CA	1:69:A:SER:C	1:70:A:GLU:N	8	1.84
(1,63)	1:57:A:ARG:C	1:58:A:ASN:N	1:58:A:ASN:CA	1:58:A:ASN:C	6	1.84
(1,83)	1:69:A:SER:C	1:70:A:GLU:N	1:70:A:GLU:CA	1:70:A:GLU:C	12	1.82

Continued on next page...

Continued from previous page...

Key	Atom-1	Atom-2	Atom-3	Atom-4	Model ID	Violation (°)
(1,64)	1:58:A:ASN:N	1:58:A:ASN:CA	1:58:A:ASN:C	1:59:A:VAL:N	11	1.82
(1,117)	1:101:A:GLY:C	1:102:A:THR:N	1:102:A:THR:CA	1:102:A:THR:C	20	1.81
(1,81)	1:68:A:ARG:C	1:69:A:SER:N	1:69:A:SER:CA	1:69:A:SER:C	3	1.81
(1,40)	1:39:A:LYS:N	1:39:A:LYS:CA	1:39:A:LYS:C	1:40:A:CYS:N	4	1.81
(1,10)	1:10:A:SER:N	1:10:A:SER:CA	1:10:A:SER:C	1:11:A:ILE:N	20	1.8
(1,133)	1:109:A:GLU:C	1:110:A:PHE:N	1:110:A:PHE:CA	1:110:A:PHE:C	7	1.79
(1,119)	1:102:A:THR:C	1:103:A:VAL:N	1:103:A:VAL:CA	1:103:A:VAL:C	5	1.79
(1,102)	1:89:A:VAL:N	1:89:A:VAL:CA	1:89:A:VAL:C	1:90:A:LYS:N	15	1.79
(1,88)	1:74:A:ALA:N	1:74:A:ALA:CA	1:74:A:ALA:C	1:75:A:GLU:N	10	1.79
(1,132)	1:109:A:GLU:N	1:109:A:GLU:CA	1:109:A:GLU:C	1:110:A:PHE:N	11	1.78
(1,117)	1:101:A:GLY:C	1:102:A:THR:N	1:102:A:THR:CA	1:102:A:THR:C	8	1.78
(1,124)	1:105:A:THR:N	1:105:A:THR:CA	1:105:A:THR:C	1:106:A:GLU:N	3	1.77
(1,114)	1:95:A:MET:N	1:95:A:MET:CA	1:95:A:MET:C	1:96:A:GLU:N	20	1.77
(1,184)	1:140:A:GLY:N	1:140:A:GLY:CA	1:140:A:GLY:C	1:141:A:ILE:N	4	1.76
(1,132)	1:109:A:GLU:N	1:109:A:GLU:CA	1:109:A:GLU:C	1:110:A:PHE:N	3	1.76
(1,38)	1:38:A:GLU:N	1:38:A:GLU:CA	1:38:A:GLU:C	1:39:A:LYS:N	9	1.76
(1,129)	1:107:A:SER:C	1:108:A:TRP:N	1:108:A:TRP:CA	1:108:A:TRP:C	15	1.75
(1,108)	1:92:A:ILE:N	1:92:A:ILE:CA	1:92:A:ILE:C	1:93:A:TYR:N	2	1.75
(1,180)	1:138:A:ILE:N	1:138:A:ILE:CA	1:138:A:ILE:C	1:139:A:THR:N	13	1.74
(1,121)	1:103:A:VAL:C	1:104:A:LEU:N	1:104:A:LEU:CA	1:104:A:LEU:C	3	1.74
(1,41)	1:39:A:LYS:C	1:40:A:CYS:N	1:40:A:CYS:CA	1:40:A:CYS:C	20	1.74
(1,125)	1:105:A:THR:C	1:106:A:GLU:N	1:106:A:GLU:CA	1:106:A:GLU:C	12	1.73
(1,53)	1:52:A:ALA:C	1:53:A:HIS:N	1:53:A:HIS:CA	1:53:A:HIS:C	16	1.73
(1,78)	1:67:A:THR:N	1:67:A:THR:CA	1:67:A:THR:C	1:68:A:ARG:N	18	1.72
(1,43)	1:40:A:CYS:C	1:41:A:TRP:N	1:41:A:TRP:CA	1:41:A:TRP:C	12	1.7
(1,2)	1:6:A:THR:N	1:6:A:THR:CA	1:6:A:THR:C	1:7:A:PHE:N	4	1.7
(1,152)	1:124:A:ASP:N	1:124:A:ASP:CA	1:124:A:ASP:C	1:125:A:LYS:N	14	1.69
(1,98)	1:83:A:SER:N	1:83:A:SER:CA	1:83:A:SER:C	1:84:A:VAL:N	12	1.68
(1,83)	1:69:A:SER:C	1:70:A:GLU:N	1:70:A:GLU:CA	1:70:A:GLU:C	10	1.68
(1,108)	1:92:A:ILE:N	1:92:A:ILE:CA	1:92:A:ILE:C	1:93:A:TYR:N	19	1.66
(1,80)	1:68:A:ARG:N	1:68:A:ARG:CA	1:68:A:ARG:C	1:69:A:SER:N	12	1.66
(1,78)	1:67:A:THR:N	1:67:A:THR:CA	1:67:A:THR:C	1:68:A:ARG:N	7	1.66
(1,38)	1:38:A:GLU:N	1:38:A:GLU:CA	1:38:A:GLU:C	1:39:A:LYS:N	19	1.65
(1,119)	1:102:A:THR:C	1:103:A:VAL:N	1:103:A:VAL:CA	1:103:A:VAL:C	18	1.63
(1,92)	1:80:A:PHE:N	1:80:A:PHE:CA	1:80:A:PHE:C	1:81:A:GLY:N	4	1.62
(1,30)	1:23:A:LEU:N	1:23:A:LEU:CA	1:23:A:LEU:C	1:24:A:VAL:N	5	1.62
(1,181)	1:138:A:ILE:C	1:139:A:THR:N	1:139:A:THR:CA	1:139:A:THR:C	17	1.6
(1,119)	1:102:A:THR:C	1:103:A:VAL:N	1:103:A:VAL:CA	1:103:A:VAL:C	12	1.6
(1,61)	1:56:A:GLY:C	1:57:A:ARG:N	1:57:A:ARG:CA	1:57:A:ARG:C	13	1.59
(1,126)	1:106:A:GLU:N	1:106:A:GLU:CA	1:106:A:GLU:C	1:107:A:SER:N	15	1.56
(1,110)	1:93:A:TYR:N	1:93:A:TYR:CA	1:93:A:TYR:C	1:94:A:SER:N	19	1.56
(1,91)	1:79:A:CYS:C	1:80:A:PHE:N	1:80:A:PHE:CA	1:80:A:PHE:C	3	1.54
(1,114)	1:95:A:MET:N	1:95:A:MET:CA	1:95:A:MET:C	1:96:A:GLU:N	13	1.53
(1,114)	1:95:A:MET:N	1:95:A:MET:CA	1:95:A:MET:C	1:96:A:GLU:N	16	1.53
(1,88)	1:74:A:ALA:N	1:74:A:ALA:CA	1:74:A:ALA:C	1:75:A:GLU:N	14	1.53
(1,155)	1:125:A:LYS:C	1:126:A:SER:N	1:126:A:SER:CA	1:126:A:SER:C	5	1.52
(1,119)	1:102:A:THR:C	1:103:A:VAL:N	1:103:A:VAL:CA	1:103:A:VAL:C	20	1.52
(1,107)	1:91:A:TRP:C	1:92:A:ILE:N	1:92:A:ILE:CA	1:92:A:ILE:C	16	1.52
(1,87)	1:73:A:VAL:C	1:74:A:ALA:N	1:74:A:ALA:CA	1:74:A:ALA:C	18	1.52
(1,124)	1:105:A:THR:N	1:105:A:THR:CA	1:105:A:THR:C	1:106:A:GLU:N	1	1.51
(1,46)	1:42:A:TRP:N	1:42:A:TRP:CA	1:42:A:TRP:C	1:43:A:ASP:N	15	1.51

Continued on next page...

Continued from previous page...

Key	Atom-1	Atom-2	Atom-3	Atom-4	Model ID	Violation (°)
(1,87)	1:73:A:VAL:C	1:74:A:ALA:N	1:74:A:ALA:CA	1:74:A:ALA:C	11	1.5
(1,70)	1:63:A:ARG:N	1:63:A:ARG:CA	1:63:A:ARG:C	1:64:A:THR:N	1	1.5
(1,112)	1:94:A:SER:N	1:94:A:SER:CA	1:94:A:SER:C	1:95:A:MET:N	4	1.49
(1,76)	1:66:A:GLU:N	1:66:A:GLU:CA	1:66:A:GLU:C	1:67:A:THR:N	15	1.49
(1,121)	1:103:A:VAL:C	1:104:A:LEU:N	1:104:A:LEU:CA	1:104:A:LEU:C	2	1.48
(1,119)	1:102:A:THR:C	1:103:A:VAL:N	1:103:A:VAL:CA	1:103:A:VAL:C	17	1.47
(1,99)	1:83:A:SER:C	1:84:A:VAL:N	1:84:A:VAL:CA	1:84:A:VAL:C	11	1.47
(1,83)	1:69:A:SER:C	1:70:A:GLU:N	1:70:A:GLU:CA	1:70:A:GLU:C	13	1.47
(1,128)	1:107:A:SER:N	1:107:A:SER:CA	1:107:A:SER:C	1:108:A:TRP:N	15	1.46
(1,119)	1:102:A:THR:C	1:103:A:VAL:N	1:103:A:VAL:CA	1:103:A:VAL:C	10	1.45
(1,88)	1:74:A:ALA:N	1:74:A:ALA:CA	1:74:A:ALA:C	1:75:A:GLU:N	8	1.45
(1,127)	1:106:A:GLU:C	1:107:A:SER:N	1:107:A:SER:CA	1:107:A:SER:C	4	1.44
(1,117)	1:101:A:GLY:C	1:102:A:THR:N	1:102:A:THR:CA	1:102:A:THR:C	6	1.44
(1,77)	1:66:A:GLU:C	1:67:A:THR:N	1:67:A:THR:CA	1:67:A:THR:C	20	1.42
(1,42)	1:40:A:CYS:N	1:40:A:CYS:CA	1:40:A:CYS:C	1:41:A:TRP:N	16	1.42
(1,131)	1:108:A:TRP:C	1:109:A:GLU:N	1:109:A:GLU:CA	1:109:A:GLU:C	14	1.41
(1,133)	1:109:A:GLU:C	1:110:A:PHE:N	1:110:A:PHE:CA	1:110:A:PHE:C	9	1.4
(1,113)	1:94:A:SER:C	1:95:A:MET:N	1:95:A:MET:CA	1:95:A:MET:C	6	1.4
(1,78)	1:67:A:THR:N	1:67:A:THR:CA	1:67:A:THR:C	1:68:A:ARG:N	3	1.4
(1,83)	1:69:A:SER:C	1:70:A:GLU:N	1:70:A:GLU:CA	1:70:A:GLU:C	14	1.39
(1,38)	1:38:A:GLU:N	1:38:A:GLU:CA	1:38:A:GLU:C	1:39:A:LYS:N	1	1.38
(1,126)	1:106:A:GLU:N	1:106:A:GLU:CA	1:106:A:GLU:C	1:107:A:SER:N	19	1.37
(1,42)	1:40:A:CYS:N	1:40:A:CYS:CA	1:40:A:CYS:C	1:41:A:TRP:N	7	1.37
(1,211)	1:154:A:VAL:C	1:155:A:GLU:N	1:155:A:GLU:CA	1:155:A:GLU:C	8	1.36
(1,92)	1:80:A:PHE:N	1:80:A:PHE:CA	1:80:A:PHE:C	1:81:A:GLY:N	17	1.36
(1,62)	1:57:A:ARG:N	1:57:A:ARG:CA	1:57:A:ARG:C	1:58:A:ASN:N	13	1.35
(1,123)	1:104:A:LEU:C	1:105:A:THR:N	1:105:A:THR:CA	1:105:A:THR:C	3	1.34
(1,117)	1:101:A:GLY:C	1:102:A:THR:N	1:102:A:THR:CA	1:102:A:THR:C	13	1.33
(1,99)	1:83:A:SER:C	1:84:A:VAL:N	1:84:A:VAL:CA	1:84:A:VAL:C	7	1.33
(1,32)	1:24:A:VAL:N	1:24:A:VAL:CA	1:24:A:VAL:C	1:25:A:SER:N	4	1.33
(1,84)	1:70:A:GLU:N	1:70:A:GLU:CA	1:70:A:GLU:C	1:71:A:VAL:N	16	1.32
(1,63)	1:57:A:ARG:C	1:58:A:ASN:N	1:58:A:ASN:CA	1:58:A:ASN:C	17	1.32
(1,181)	1:138:A:ILE:C	1:139:A:THR:N	1:139:A:THR:CA	1:139:A:THR:C	3	1.31
(1,108)	1:92:A:ILE:N	1:92:A:ILE:CA	1:92:A:ILE:C	1:93:A:TYR:N	14	1.29
(1,33)	1:35:A:PRO:C	1:36:A:VAL:N	1:36:A:VAL:CA	1:36:A:VAL:C	3	1.29
(1,2)	1:6:A:THR:N	1:6:A:THR:CA	1:6:A:THR:C	1:7:A:PHE:N	18	1.29
(1,125)	1:105:A:THR:C	1:106:A:GLU:N	1:106:A:GLU:CA	1:106:A:GLU:C	7	1.28
(1,124)	1:105:A:THR:N	1:105:A:THR:CA	1:105:A:THR:C	1:106:A:GLU:N	8	1.28
(1,98)	1:83:A:SER:N	1:83:A:SER:CA	1:83:A:SER:C	1:84:A:VAL:N	18	1.28
(1,43)	1:40:A:CYS:C	1:41:A:TRP:N	1:41:A:TRP:CA	1:41:A:TRP:C	4	1.28
(1,117)	1:101:A:GLY:C	1:102:A:THR:N	1:102:A:THR:CA	1:102:A:THR:C	12	1.27
(1,41)	1:39:A:LYS:C	1:40:A:CYS:N	1:40:A:CYS:CA	1:40:A:CYS:C	16	1.27
(1,113)	1:94:A:SER:C	1:95:A:MET:N	1:95:A:MET:CA	1:95:A:MET:C	19	1.24
(1,99)	1:83:A:SER:C	1:84:A:VAL:N	1:84:A:VAL:CA	1:84:A:VAL:C	5	1.24
(1,137)	1:113:A:LYS:C	1:114:A:GLY:N	1:114:A:GLY:CA	1:114:A:GLY:C	14	1.23
(1,117)	1:101:A:GLY:C	1:102:A:THR:N	1:102:A:THR:CA	1:102:A:THR:C	2	1.23
(1,180)	1:138:A:ILE:N	1:138:A:ILE:CA	1:138:A:ILE:C	1:139:A:THR:N	18	1.22
(1,127)	1:106:A:GLU:C	1:107:A:SER:N	1:107:A:SER:CA	1:107:A:SER:C	15	1.22
(1,98)	1:83:A:SER:N	1:83:A:SER:CA	1:83:A:SER:C	1:84:A:VAL:N	14	1.22
(1,48)	1:43:A:ASP:N	1:43:A:ASP:CA	1:43:A:ASP:C	1:44:A:GLU:N	7	1.22
(1,124)	1:105:A:THR:N	1:105:A:THR:CA	1:105:A:THR:C	1:106:A:GLU:N	7	1.21

Continued on next page...

Continued from previous page...

Key	Atom-1	Atom-2	Atom-3	Atom-4	Model ID	Violation (°)
(1,117)	1:101:A:GLY:C	1:102:A:THR:N	1:102:A:THR:CA	1:102:A:THR:C	18	1.21
(1,108)	1:92:A:ILE:N	1:92:A:ILE:CA	1:92:A:ILE:C	1:93:A:TYR:N	12	1.21
(1,18)	1:17:A:ILE:N	1:17:A:ILE:CA	1:17:A:ILE:C	1:18:A:ASN:N	1	1.21
(1,98)	1:83:A:SER:N	1:83:A:SER:CA	1:83:A:SER:C	1:84:A:VAL:N	6	1.2
(1,112)	1:94:A:SER:N	1:94:A:SER:CA	1:94:A:SER:C	1:95:A:MET:N	11	1.19
(1,81)	1:68:A:ARG:C	1:69:A:SER:N	1:69:A:SER:CA	1:69:A:SER:C	4	1.19
(1,117)	1:101:A:GLY:C	1:102:A:THR:N	1:102:A:THR:CA	1:102:A:THR:C	4	1.18
(1,63)	1:57:A:ARG:C	1:58:A:ASN:N	1:58:A:ASN:CA	1:58:A:ASN:C	9	1.18
(1,62)	1:57:A:ARG:N	1:57:A:ARG:CA	1:57:A:ARG:C	1:58:A:ASN:N	9	1.18
(1,99)	1:83:A:SER:C	1:84:A:VAL:N	1:84:A:VAL:CA	1:84:A:VAL:C	19	1.16
(1,17)	1:16:A:PRO:C	1:17:A:ILE:N	1:17:A:ILE:CA	1:17:A:ILE:C	12	1.16
(1,18)	1:17:A:ILE:N	1:17:A:ILE:CA	1:17:A:ILE:C	1:18:A:ASN:N	16	1.15
(1,82)	1:69:A:SER:N	1:69:A:SER:CA	1:69:A:SER:C	1:70:A:GLU:N	9	1.14
(1,44)	1:41:A:TRP:N	1:41:A:TRP:CA	1:41:A:TRP:C	1:42:A:TRP:N	4	1.14
(1,30)	1:23:A:LEU:N	1:23:A:LEU:CA	1:23:A:LEU:C	1:24:A:VAL:N	7	1.14
(1,2)	1:6:A:THR:N	1:6:A:THR:CA	1:6:A:THR:C	1:7:A:PHE:N	9	1.14
(1,50)	1:44:A:GLU:N	1:44:A:GLU:CA	1:44:A:GLU:C	1:45:A:ASP:N	15	1.12
(1,107)	1:91:A:TRP:C	1:92:A:ILE:N	1:92:A:ILE:CA	1:92:A:ILE:C	1	1.11
(1,70)	1:63:A:ARG:N	1:63:A:ARG:CA	1:63:A:ARG:C	1:64:A:THR:N	14	1.11
(1,177)	1:136:A:ALA:C	1:137:A:ALA:N	1:137:A:ALA:CA	1:137:A:ALA:C	16	1.1
(1,127)	1:106:A:GLU:C	1:107:A:SER:N	1:107:A:SER:CA	1:107:A:SER:C	1	1.1
(1,78)	1:67:A:THR:N	1:67:A:THR:CA	1:67:A:THR:C	1:68:A:ARG:N	15	1.1
(1,110)	1:93:A:TYR:N	1:93:A:TYR:CA	1:93:A:TYR:C	1:94:A:SER:N	20	1.08
(1,2)	1:6:A:THR:N	1:6:A:THR:CA	1:6:A:THR:C	1:7:A:PHE:N	3	1.08
(1,181)	1:138:A:ILE:C	1:139:A:THR:N	1:139:A:THR:CA	1:139:A:THR:C	16	1.07
(1,89)	1:78:A:ARG:C	1:79:A:CYS:N	1:79:A:CYS:CA	1:79:A:CYS:C	15	1.07
(1,151)	1:123:A:GLY:C	1:124:A:ASP:N	1:124:A:ASP:CA	1:124:A:ASP:C	19	1.06
(1,43)	1:40:A:CYS:C	1:41:A:TRP:N	1:41:A:TRP:CA	1:41:A:TRP:C	2	1.06
(1,121)	1:103:A:VAL:C	1:104:A:LEU:N	1:104:A:LEU:CA	1:104:A:LEU:C	13	1.05
(1,108)	1:92:A:ILE:N	1:92:A:ILE:CA	1:92:A:ILE:C	1:93:A:TYR:N	6	1.05
(1,45)	1:41:A:TRP:C	1:42:A:TRP:N	1:42:A:TRP:CA	1:42:A:TRP:C	1	1.05
(1,123)	1:104:A:LEU:C	1:105:A:THR:N	1:105:A:THR:CA	1:105:A:THR:C	14	1.03
(1,32)	1:24:A:VAL:N	1:24:A:VAL:CA	1:24:A:VAL:C	1:25:A:SER:N	14	1.03
(1,21)	1:18:A:ASN:C	1:19:A:GLN:N	1:19:A:GLN:CA	1:19:A:GLN:C	14	1.03
(1,90)	1:79:A:CYS:N	1:79:A:CYS:CA	1:79:A:CYS:C	1:80:A:PHE:N	5	1.02
(1,130)	1:108:A:TRP:N	1:108:A:TRP:CA	1:108:A:TRP:C	1:109:A:GLU:N	8	1.01