



# wwPDB X-ray Structure Validation Summary Report ⓘ

Mar 19, 2025 – 12:12 PM EDT

PDB ID : 7M1Z  
Title : Targeting Enterococcus faecalis HMG-CoA reductase with a novel non-statin inhibitor  
Authors : Bose, S.; Steussy, C.N.; Stauffacher, C.V.  
Deposited on : 2021-03-15  
Resolution : 2.27 Å(reported)

This is a wwPDB X-ray Structure Validation Summary Report for a publicly released PDB entry.

We welcome your comments at [validation@mail.wwpdb.org](mailto:validation@mail.wwpdb.org)

A user guide is available at

<https://www.wwpdb.org/validation/2017/XrayValidationReportHelp>

with specific help available everywhere you see the ⓘ symbol.

The types of validation reports are described at

<http://www.wwpdb.org/validation/2017/FAQs#types>.

---

The following versions of software and data (see [references ⓘ](#)) were used in the production of this report:

MolProbity : 4.02b-467  
Mogul : 2022.3.0, CSD as543be (2022)  
Xtriage (Phenix) : 1.21  
EDS : 3.0  
buster-report : 1.1.7 (2018)  
Percentile statistics : 20231227.v01 (using entries in the PDB archive December 27th 2023)  
CCP4 : 9.0.004 (Gargrove)  
Density-Fitness : 1.0.11  
Ideal geometry (proteins) : Engh & Huber (2001)  
Ideal geometry (DNA, RNA) : Parkinson et al. (1996)  
Validation Pipeline (wwPDB-VP) : 2.41.4

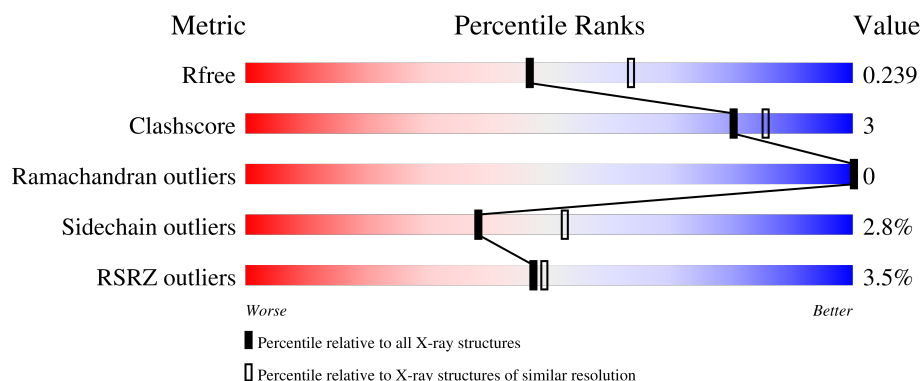
# 1 Overall quality at a glance

The following experimental techniques were used to determine the structure:

*X-RAY DIFFRACTION*

The reported resolution of this entry is 2.27 Å.

Percentile scores (ranging between 0-100) for global validation metrics of the entry are shown in the following graphic. The table shows the number of entries on which the scores are based.



Metric	Whole archive (#Entries)	Similar resolution (#Entries, resolution range(Å))
$R_{free}$	164625	8487 (2.30-2.26)
Clashscore	180529	9437 (2.30-2.26)
Ramachandran outliers	177936	9341 (2.30-2.26)
Sidechain outliers	177891	9342 (2.30-2.26)
RSRZ outliers	164620	8487 (2.30-2.26)

The table below summarises the geometric issues observed across the polymeric chains and their fit to the electron density. The red, orange, yellow and green segments of the lower bar indicate the fraction of residues that contain outliers for  $\geq 3$ , 2, 1 and 0 types of geometric quality criteria respectively. A grey segment represents the fraction of residues that are not modelled. The numeric value for each fraction is indicated below the corresponding segment, with a dot representing fractions  $\leq 5\%$ . The upper red bar (where present) indicates the fraction of residues that have poor fit to the electron density. The numeric value is given above the bar.

Mol	Chain	Length	Quality of chain
1	A	430	<div> <div>%</div> <div> <div></div> <div>78%</div> <div>5%</div> <div>17%</div> </div> </div>
1	B	430	<div> <div>5%</div> <div> <div></div> <div>93%</div> <div>6%</div> </div> <div>.</div> </div>
1	C	430	<div> <div>5%</div> <div> <div></div> <div>89%</div> <div>9%</div> </div> <div>.</div> </div>
1	D	430	<div> <div>%</div> <div> <div></div> <div>75%</div> <div>8%</div> <div>17%</div> </div> </div>

The following table lists non-polymeric compounds, carbohydrate monomers and non-standard

residues in protein, DNA, RNA chains that are outliers for geometric or electron-density-fit criteria:

Mol	Type	Chain	Res	Chirality	Geometry	Clashes	Electron density
5	ACT	A	510	-	-	X	-
5	ACT	A	512	-	-	X	-

## 2 Entry composition

There are 8 unique types of molecules in this entry. The entry contains 25332 atoms, of which 12529 are hydrogens and 0 are deuteriums.

In the tables below, the ZeroOcc column contains the number of atoms modelled with zero occupancy, the AltConf column contains the number of residues with at least one atom in alternate conformation and the Trace column contains the number of residues modelled with at most 2 atoms.

- Molecule 1 is a protein called acetyl-CoA C-acetyltransferase.

Mol	Chain	Residues	Atoms						ZeroOcc	AltConf	Trace
1	A	358	Total	C	H	N	O	S	2	28	0
			5714	1786	2876	483	553	16			
1	B	425	Total	C	H	N	O	S	10	4	0
			6582	2042	3322	574	629	15			
1	C	422	Total	C	H	N	O	S	2	4	0
			6554	2036	3307	569	627	15			
1	D	357	Total	C	H	N	O	S	3	13	0
			5562	1743	2791	472	541	15			

There are 28 discrepancies between the modelled and reference sequences:

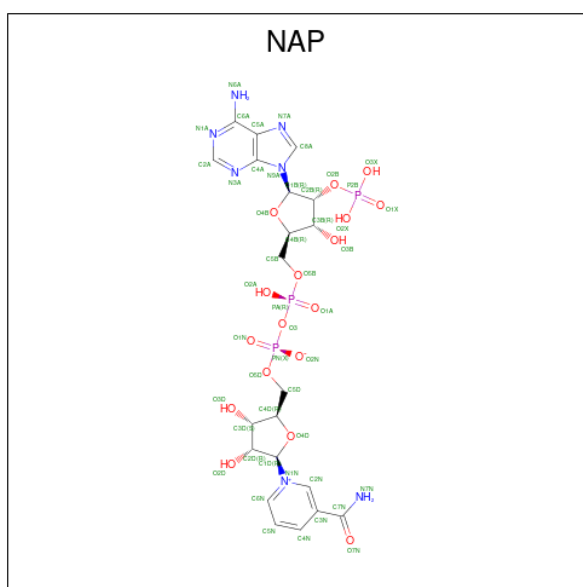
Chain	Residue	Modelled	Actual	Comment	Reference
A	-6	LEU	-	expression tag	UNP A0A4U3MLJ4
A	-5	VAL	-	expression tag	UNP A0A4U3MLJ4
A	-4	PRO	-	expression tag	UNP A0A4U3MLJ4
A	-3	ARG	-	expression tag	UNP A0A4U3MLJ4
A	-2	GLY	-	expression tag	UNP A0A4U3MLJ4
A	-1	SER	-	expression tag	UNP A0A4U3MLJ4
A	0	HIS	-	expression tag	UNP A0A4U3MLJ4
B	-6	LEU	-	expression tag	UNP A0A4U3MLJ4
B	-5	VAL	-	expression tag	UNP A0A4U3MLJ4
B	-4	PRO	-	expression tag	UNP A0A4U3MLJ4
B	-3	ARG	-	expression tag	UNP A0A4U3MLJ4
B	-2	GLY	-	expression tag	UNP A0A4U3MLJ4
B	-1	SER	-	expression tag	UNP A0A4U3MLJ4
B	0	HIS	-	expression tag	UNP A0A4U3MLJ4
C	-6	LEU	-	expression tag	UNP A0A4U3MLJ4
C	-5	VAL	-	expression tag	UNP A0A4U3MLJ4
C	-4	PRO	-	expression tag	UNP A0A4U3MLJ4
C	-3	ARG	-	expression tag	UNP A0A4U3MLJ4
C	-2	GLY	-	expression tag	UNP A0A4U3MLJ4
C	-1	SER	-	expression tag	UNP A0A4U3MLJ4
C	0	HIS	-	expression tag	UNP A0A4U3MLJ4

*Continued on next page...*

Continued from previous page...

Chain	Residue	Modelled	Actual	Comment	Reference
D	-6	LEU	-	expression tag	UNP A0A4U3MLJ4
D	-5	VAL	-	expression tag	UNP A0A4U3MLJ4
D	-4	PRO	-	expression tag	UNP A0A4U3MLJ4
D	-3	ARG	-	expression tag	UNP A0A4U3MLJ4
D	-2	GLY	-	expression tag	UNP A0A4U3MLJ4
D	-1	SER	-	expression tag	UNP A0A4U3MLJ4
D	0	HIS	-	expression tag	UNP A0A4U3MLJ4

- Molecule 2 is NADP NICOTINAMIDE-ADENINE-DINUCLEOTIDE PHOSPHATE (three-letter code: NAP) (formula:  $C_{21}H_{28}N_7O_{17}P_3$ ).



Mol	Chain	Residues	Atoms						ZeroOcc	AltConf
2	A	1	Total 73	C 21	H 25	N 7	O 17	P 3	0	0
2	B	1	Total 73	C 21	H 25	N 7	O 17	P 3	0	0
2	C	1	Total 73	C 21	H 25	N 7	O 17	P 3	0	0
2	D	1	Total 73	C 21	H 25	N 7	O 17	P 3	0	0

- Molecule 3 is GLYCEROL (three-letter code: GOL) (formula:  $C_3H_8O_3$ ).



Mol	Chain	Residues	Atoms				ZeroOcc	AltConf
3	A	1	Total	C	H	O	0	0
			14	3	8	3		
3	A	1	Total	C	H	O	0	0
			14	3	8	3		
3	A	1	Total	C	H	O	0	0
			14	3	8	3		
3	B	1	Total	C	H	O	0	0
			14	3	8	3		
3	B	1	Total	C	H	O	0	0
			14	3	8	3		
3	C	1	Total	C	H	O	0	0
			14	3	8	3		
3	C	1	Total	C	H	O	0	0
			14	3	8	3		

- Molecule 4 is CALCIUM ION (three-letter code: CA) (formula: Ca).

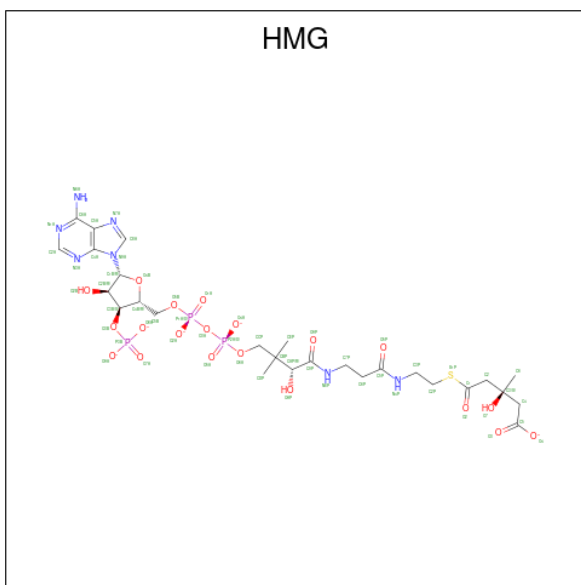
Mol	Chain	Residues	Atoms		ZeroOcc	AltConf
4	A	2	Total	Ca	0	0
			2	2		
4	B	1	Total	Ca	0	0
			1	1		
4	C	2	Total	Ca	0	0
			2	2		
4	D	2	Total	Ca	0	0
			2	2		

- Molecule 5 is ACETATE ION (three-letter code: ACT) (formula: C<sub>2</sub>H<sub>3</sub>O<sub>2</sub>).



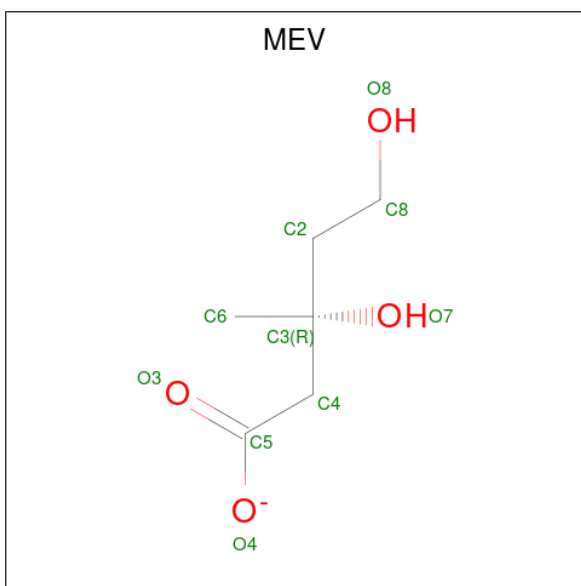
Mol	Chain	Residues	Atoms				ZeroOcc	AltConf
5	A	1	Total	C	H	O	0	0
			7	2	3	2		
5	A	1	Total	C	H	O	0	0
			7	2	3	2		
5	A	1	Total	C	H	O	0	0
			7	2	3	2		
5	A	1	Total	C	H	O	0	0
			7	2	3	2		
5	A	1	Total	C	H	O	0	0
			7	2	3	2		
5	B	1	Total	C	H	O	0	0
			7	2	3	2		
5	C	1	Total	C	H	O	0	0
			7	2	3	2		
5	C	1	Total	C	H	O	0	0
			7	2	3	2		

- Molecule 6 is 3-HYDROXY-3-METHYLGLUTARYL-COENZYME A (three-letter code: HMG) (formula: C<sub>27</sub>H<sub>39</sub>N<sub>7</sub>O<sub>20</sub>P<sub>3</sub>S).



Mol	Chain	Residues	Atoms							ZeroOcc	AltConf
			Total	C	H	N	O	P	S		
6	B	1	97	27	39	7	20	3	1	0	0

- Molecule 7 is (R)-MEVALONATE (three-letter code: MEV) (formula:  $C_6H_{11}O_4$ ).



Mol	Chain	Residues	Atoms				ZeroOcc	AltConf
			Total	C	H	O		
7	C	1	21	6	11	4	0	0

- Molecule 8 is water.

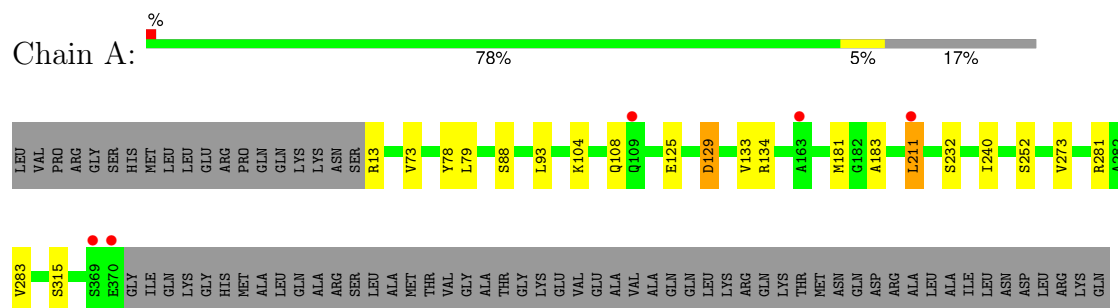


Mol	Chain	Residues	Atoms		ZeroOcc	AltConf
8	A	111	Total 112	O 112	0	1
8	B	103	Total 103	O 103	0	0
8	C	68	Total 68	O 68	0	0
8	D	58	Total 59	O 59	0	1

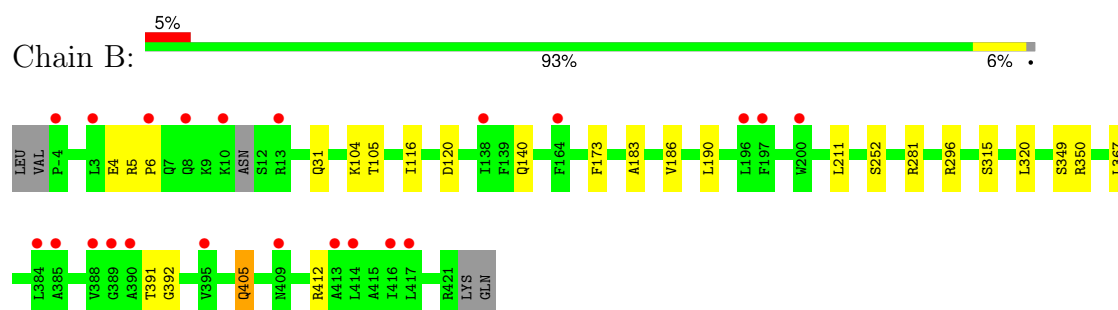
### 3 Residue-property plots [i](#)

These plots are drawn for all protein, RNA, DNA and oligosaccharide chains in the entry. The first graphic for a chain summarises the proportions of the various outlier classes displayed in the second graphic. The second graphic shows the sequence view annotated by issues in geometry and electron density. Residues are color-coded according to the number of geometric quality criteria for which they contain at least one outlier: green = 0, yellow = 1, orange = 2 and red = 3 or more. A red dot above a residue indicates a poor fit to the electron density ( $RSRZ > 2$ ). Stretches of 2 or more consecutive residues without any outlier are shown as a green connector. Residues present in the sample, but not in the model, are shown in grey.

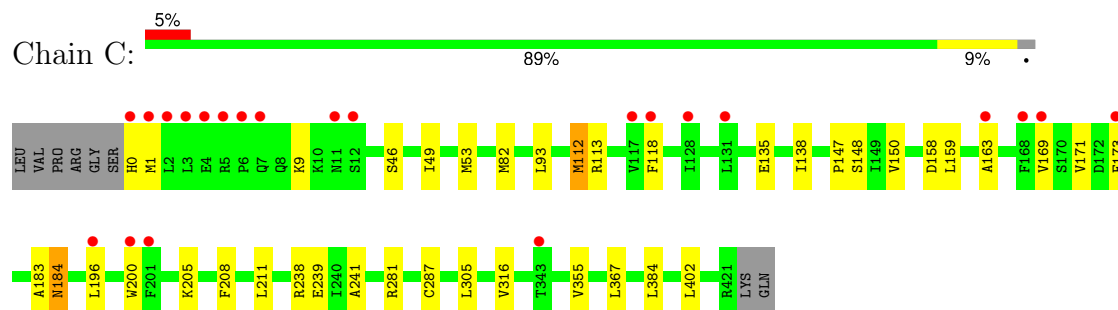
- Molecule 1: acetyl-CoA C-acetyltransferase



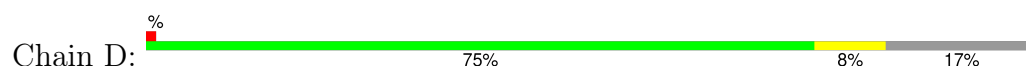
- Molecule 1: acetyl-CoA C-acetyltransferase

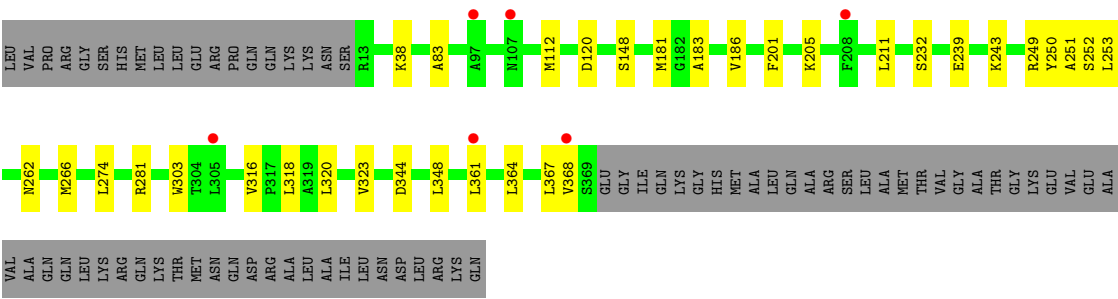


- Molecule 1: acetyl-CoA C-acetyltransferase



- Molecule 1: acetyl-CoA C-acetyltransferase





## 4 Data and refinement statistics

Property	Value	Source
Space group	C 1 2 1	Depositor
Cell constants a, b, c, $\alpha$ , $\beta$ , $\gamma$	241.29Å 62.56Å 171.93Å 90.00° 133.49° 90.00°	Depositor
Resolution (Å)	39.54 – 2.27 39.54 – 2.27	Depositor EDS
% Data completeness (in resolution range)	88.1 (39.54-2.27) 88.0 (39.54-2.27)	Depositor EDS
$R_{merge}$	0.09	Depositor
$R_{sym}$	(Not available)	Depositor
$\langle I/\sigma(I) \rangle$ <sup>1</sup>	1.69 (at 2.27Å)	Xtriage
Refinement program	PHENIX 1.19.2_4158	Depositor
R, $R_{free}$	0.196 , 0.239 0.198 , 0.239	Depositor DCC
$R_{free}$ test set	4325 reflections (5.05%)	wwPDB-VP
Wilson B-factor (Å <sup>2</sup> )	38.1	Xtriage
Anisotropy	0.957	Xtriage
Bulk solvent $k_{sol}$ (e/Å <sup>3</sup> ), $B_{sol}$ (Å <sup>2</sup> )	0.39 , 49.6	EDS
L-test for twinning <sup>2</sup>	$\langle  L  \rangle = 0.50$ , $\langle L^2 \rangle = 0.33$	Xtriage
Estimated twinning fraction	0.008 for h+2*k,-h-l 0.007 for h,-k,-h-l 0.011 for -h-2*k,-k,l	Xtriage
$F_o, F_c$ correlation	0.95	EDS
Total number of atoms	25332	wwPDB-VP
Average B, all atoms (Å <sup>2</sup> )	64.0	wwPDB-VP

Xtriage's analysis on translational NCS is as follows: *The largest off-origin peak in the Patterson function is 4.10% of the height of the origin peak. No significant pseudotranslation is detected.*

<sup>1</sup>Intensities estimated from amplitudes.

<sup>2</sup>Theoretical values of  $\langle |L| \rangle$ ,  $\langle L^2 \rangle$  for acentric reflections are 0.5, 0.333 respectively for untwinned datasets, and 0.375, 0.2 for perfectly twinned datasets.

## 5 Model quality [i](#)

### 5.1 Standard geometry [i](#)

Bond lengths and bond angles in the following residue types are not validated in this section: HMG, CA, MEV, ACT, GOL, NAP

The Z score for a bond length (or angle) is the number of standard deviations the observed value is removed from the expected value. A bond length (or angle) with  $|Z| > 5$  is considered an outlier worth inspection. RMSZ is the root-mean-square of all Z scores of the bond lengths (or angles).

Mol	Chain	Bond lengths		Bond angles	
		RMSZ	$\# Z  > 5$	RMSZ	$\# Z  > 5$
1	A	0.33	0/2993	0.52	0/4047
1	B	0.37	0/3318	0.55	0/4478
1	C	0.35	0/3296	0.54	0/4454
1	D	0.40	0/2848	0.54	0/3856
All	All	0.36	0/12455	0.54	0/16835

There are no bond length outliers.

There are no bond angle outliers.

There are no chirality outliers.

There are no planarity outliers.

### 5.2 Too-close contacts [i](#)

In the following table, the Non-H and H(model) columns list the number of non-hydrogen atoms and hydrogen atoms in the chain respectively. The H(added) column lists the number of hydrogen atoms added and optimized by MolProbity. The Clashes column lists the number of clashes within the asymmetric unit, whereas Symm-Clashes lists symmetry-related clashes.

Mol	Chain	Non-H	H(model)	H(added)	Clashes	Symm-Clashes
1	A	2838	2876	2745	13	0
1	B	3260	3322	3302	12	0
1	C	3247	3307	3302	20	0
1	D	2771	2791	2745	18	0
2	A	48	25	25	0	0
2	B	48	25	25	0	0
2	C	48	25	25	0	0
2	D	48	25	25	1	0
3	A	18	24	24	3	0

*Continued on next page...*

*Continued from previous page...*

Mol	Chain	Non-H	H(model)	H(added)	Clashes	Symm-Clashes
3	B	12	16	16	3	0
3	C	12	16	16	0	0
4	A	2	0	0	0	0
4	B	1	0	0	0	0
4	C	2	0	0	0	0
4	D	2	0	0	0	0
5	A	24	18	18	4	0
5	B	4	3	3	0	0
5	C	8	6	6	0	0
6	B	58	39	39	3	0
7	C	10	11	11	0	0
8	A	112	0	0	0	0
8	B	103	0	0	1	0
8	C	68	0	0	0	0
8	D	59	0	0	1	0
All	All	12803	12529	12327	63	0

The all-atom clashscore is defined as the number of clashes found per 1000 atoms (including hydrogen atoms). The all-atom clashscore for this structure is 3.

The worst 5 of 63 close contacts within the same asymmetric unit are listed below, sorted by their clash magnitude.

Atom-1	Atom-2	Interatomic distance (Å)	Clash overlap (Å)
6:B:501:HMG:O4A	3:B:504:GOL:H11	1.70	0.92
6:B:501:HMG:O1A	3:B:504:GOL:H12	1.76	0.85
1:D:183:ALA:HA	1:D:211:LEU:HD13	1.69	0.73
1:B:116:ILE:HG13	1:B:190:LEU:HD12	1.74	0.68
1:C:241:ALA:HB1	1:C:305[B]:LEU:HD21	1.75	0.67

There are no symmetry-related clashes.

## 5.3 Torsion angles [i](#)

### 5.3.1 Protein backbone [i](#)

In the following table, the Percentiles column shows the percent Ramachandran outliers of the chain as a percentile score with respect to all X-ray entries followed by that with respect to entries of similar resolution.

The Analysed column shows the number of residues for which the backbone conformation was analysed, and the total number of residues.

Mol	Chain	Analysed	Favoured	Allowed	Outliers	Percentiles	
1	A	382/430 (89%)	368 (96%)	14 (4%)	0	100	100
1	B	425/430 (99%)	411 (97%)	14 (3%)	0	100	100
1	C	424/430 (99%)	407 (96%)	17 (4%)	0	100	100
1	D	368/430 (86%)	354 (96%)	14 (4%)	0	100	100
All	All	1599/1720 (93%)	1540 (96%)	59 (4%)	0	100	100

There are no Ramachandran outliers to report.

### 5.3.2 Protein sidechains ⓘ

In the following table, the Percentiles column shows the percent sidechain outliers of the chain as a percentile score with respect to all X-ray entries followed by that with respect to entries of similar resolution.

The Analysed column shows the number of residues for which the sidechain conformation was analysed, and the total number of residues.

Mol	Chain	Analysed	Rotameric	Outliers	Percentiles	
1	A	317/350 (91%)	309 (98%)	8 (2%)	42	57
1	B	349/350 (100%)	339 (97%)	10 (3%)	37	51
1	C	347/350 (99%)	337 (97%)	10 (3%)	37	51
1	D	301/350 (86%)	294 (98%)	7 (2%)	45	60
All	All	1314/1400 (94%)	1279 (97%)	35 (3%)	38	54

5 of 35 residues with a non-rotameric sidechain are listed below:

Mol	Chain	Res	Type
1	D	38	LYS
1	D	148	SER
1	D	252	SER
1	B	140	GLN
1	B	120	ASP

Sometimes sidechains can be flipped to improve hydrogen bonding and reduce clashes. All (3) such sidechains are listed below:

Mol	Chain	Res	Type
1	B	204	GLN
1	B	405	GLN
1	C	184	ASN

### 5.3.3 RNA ⓘ

There are no RNA molecules in this entry.

## 5.4 Non-standard residues in protein, DNA, RNA chains ⓘ

There are no non-standard protein/DNA/RNA residues in this entry.

## 5.5 Carbohydrates ⓘ

There are no oligosaccharides in this entry.

## 5.6 Ligand geometry ⓘ

Of 29 ligands modelled in this entry, 7 are monoatomic - leaving 22 for Mogul analysis.

In the following table, the Counts columns list the number of bonds (or angles) for which Mogul statistics could be retrieved, the number of bonds (or angles) that are observed in the model and the number of bonds (or angles) that are defined in the Chemical Component Dictionary. The Link column lists molecule types, if any, to which the group is linked. The Z score for a bond length (or angle) is the number of standard deviations the observed value is removed from the expected value. A bond length (or angle) with  $|Z| > 2$  is considered an outlier worth inspection. RMSZ is the root-mean-square of all Z scores of the bond lengths (or angles).

Mol	Type	Chain	Res	Link	Bond lengths			Bond angles		
					Counts	RMSZ	# Z  > 2	Counts	RMSZ	# Z  > 2
5	ACT	A	510	-	3,3,3	1.15	0	3,3,3	1.46	1 (33%)
3	GOL	C	503	-	5,5,5	0.87	0	5,5,5	1.09	0
3	GOL	A	502	-	5,5,5	0.83	0	5,5,5	1.05	0
5	ACT	B	506	-	3,3,3	1.09	0	3,3,3	1.60	1 (33%)
3	GOL	C	504	-	5,5,5	0.76	0	5,5,5	1.00	0
2	NAP	B	502	-	46,52,52	3.07	23 (50%)	61,80,80	2.01	18 (29%)
6	HMG	B	501	-	54,60,60	2.41	16 (29%)	68,90,90	1.49	8 (11%)
3	GOL	A	503	-	5,5,5	0.76	0	5,5,5	1.03	0
2	NAP	A	501	-	46,52,52	3.10	24 (52%)	61,80,80	1.78	14 (22%)
5	ACT	C	507	-	3,3,3	1.15	0	3,3,3	1.55	1 (33%)
5	ACT	A	508	-	3,3,3	1.04	0	3,3,3	1.59	0
5	ACT	A	511	-	3,3,3	1.25	0	3,3,3	1.58	0
5	ACT	A	507	-	3,3,3	1.20	0	3,3,3	1.68	1 (33%)
3	GOL	B	503	-	5,5,5	0.87	0	5,5,5	1.08	0
5	ACT	A	512	-	3,3,3	1.15	0	3,3,3	1.66	1 (33%)
2	NAP	D	501	-	46,52,52	2.76	19 (41%)	61,80,80	2.30	18 (29%)



Mol	Type	Chain	Res	Link	Bond lengths			Bond angles		
					Counts	RMSZ	# Z  > 2	Counts	RMSZ	# Z  > 2
3	GOL	B	504	-	5,5,5	0.36	0	5,5,5	0.50	0
2	NAP	C	502	-	46,52,52	3.02	22 (47%)	61,80,80	2.08	18 (29%)
5	ACT	A	509	-	3,3,3	1.16	0	3,3,3	1.72	1 (33%)
5	ACT	C	508	-	3,3,3	0.99	0	3,3,3	1.63	1 (33%)
7	MEV	C	501	-	8,9,9	1.11	0	7,12,12	1.23	0
3	GOL	A	504	-	5,5,5	0.77	0	5,5,5	1.13	0

In the following table, the Chirals column lists the number of chiral outliers, the number of chiral centers analysed, the number of these observed in the model and the number defined in the Chemical Component Dictionary. Similar counts are reported in the Torsion and Rings columns. '-' means no outliers of that kind were identified.

Mol	Type	Chain	Res	Link	Chirals	Torsions	Rings
3	GOL	B	504	-	-	0/4/4/4	-
2	NAP	C	502	-	-	10/31/67/67	0/5/5/5
3	GOL	C	503	-	-	1/4/4/4	-
6	HMG	B	501	-	-	16/56/77/77	0/3/3/3
3	GOL	B	503	-	-	0/4/4/4	-
3	GOL	A	502	-	-	2/4/4/4	-
3	GOL	C	504	-	-	4/4/4/4	-
2	NAP	B	502	-	-	13/31/67/67	0/5/5/5
3	GOL	A	503	-	-	4/4/4/4	-
7	MEV	C	501	-	-	2/9/9/9	-
2	NAP	A	501	-	-	13/31/67/67	0/5/5/5
3	GOL	A	504	-	-	0/4/4/4	-
2	NAP	D	501	-	-	13/31/67/67	0/5/5/5

The worst 5 of 104 bond length outliers are listed below:

Mol	Chain	Res	Type	Atoms	Z	Observed(Å)	Ideal(Å)
2	A	501	NAP	O4D-C1D	9.76	1.53	1.40
2	C	502	NAP	O4D-C1D	9.02	1.52	1.40
2	B	502	NAP	O4D-C1D	9.01	1.52	1.40
6	B	501	HMG	O4B-C1B	8.52	1.52	1.40
2	D	501	NAP	O4D-C1D	8.22	1.51	1.40

The worst 5 of 83 bond angle outliers are listed below:

Mol	Chain	Res	Type	Atoms	Z	Observed(°)	Ideal(°)
2	D	501	NAP	C6N-N1N-C2N	-7.76	115.28	121.88
2	C	502	NAP	C3N-C7N-N7N	6.71	126.00	117.74
2	D	501	NAP	C3N-C7N-N7N	6.62	125.89	117.74
2	B	502	NAP	C3N-C7N-N7N	6.28	125.48	117.74
2	C	502	NAP	N3A-C2A-N1A	-5.75	120.86	128.67

There are no chirality outliers.

5 of 78 torsion outliers are listed below:

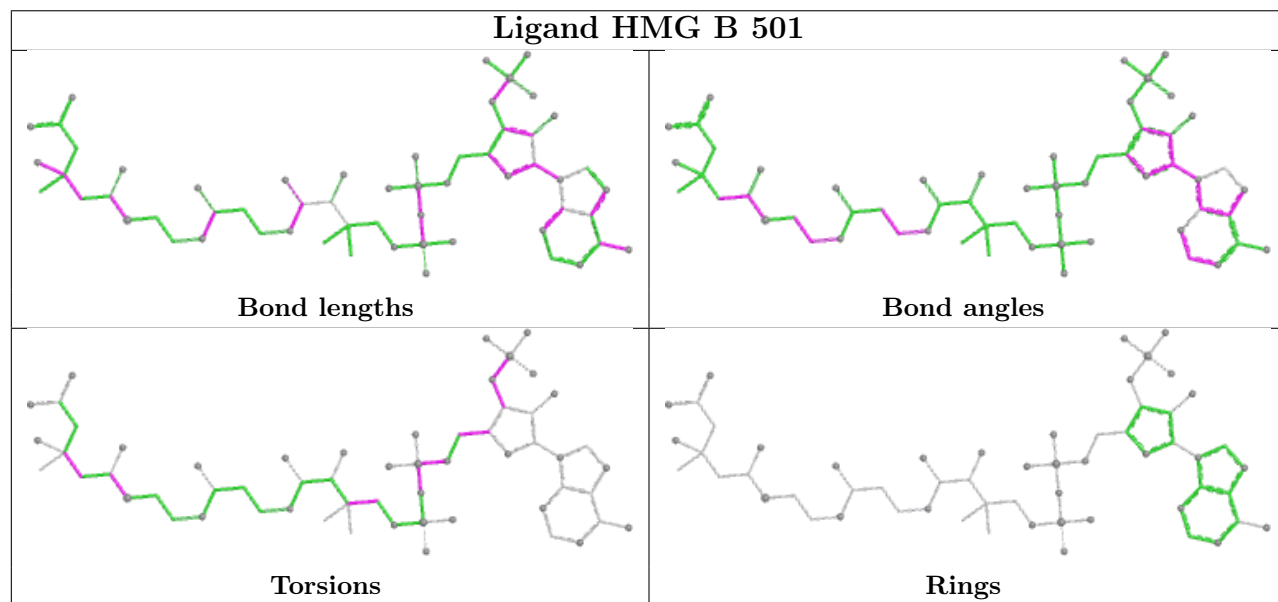
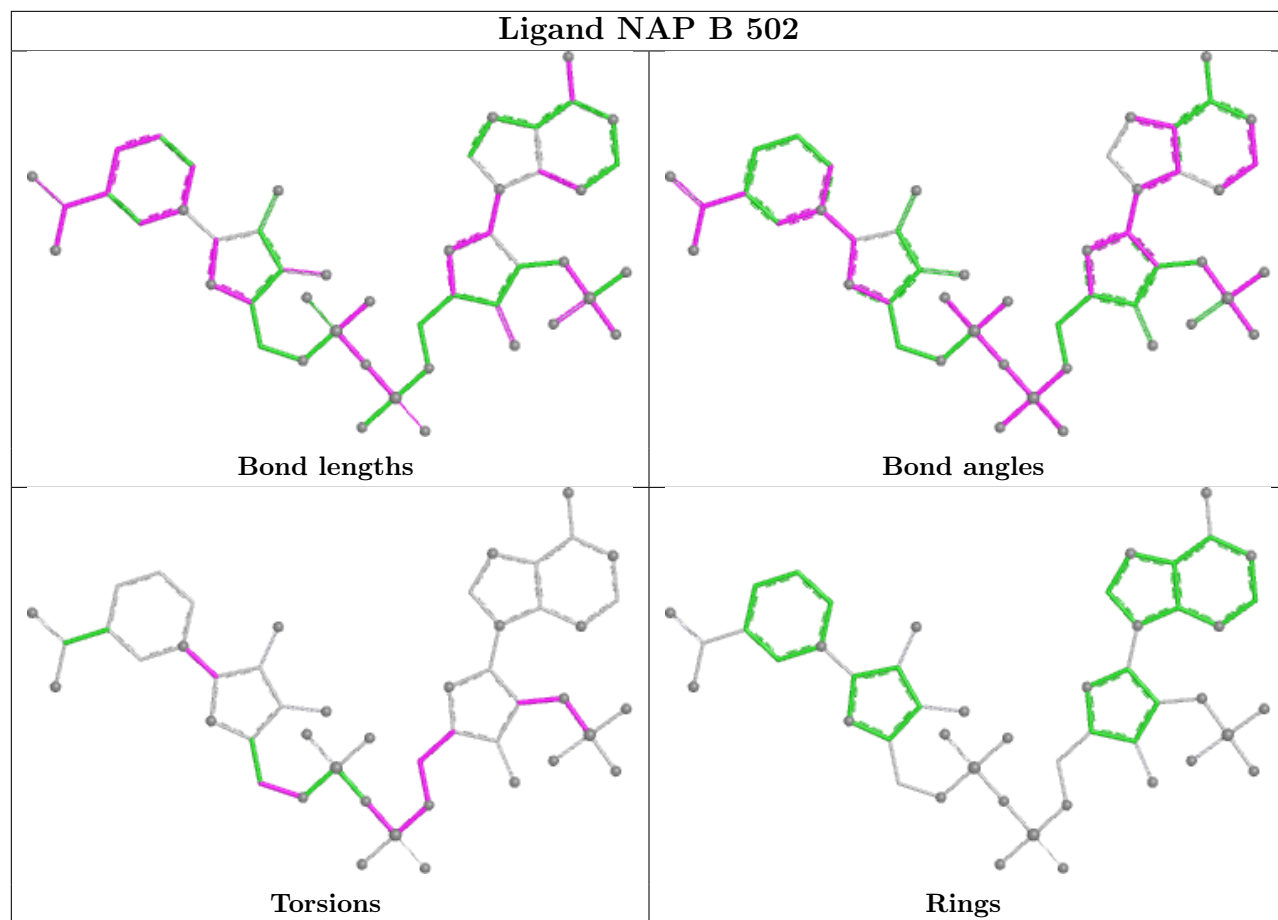
Mol	Chain	Res	Type	Atoms
2	A	501	NAP	C5B-O5B-PA-O1A
2	A	501	NAP	C5B-O5B-PA-O3
2	A	501	NAP	PN-O3-PA-O5B
2	A	501	NAP	C4B-C5B-O5B-PA
2	A	501	NAP	O4D-C1D-N1N-C6N

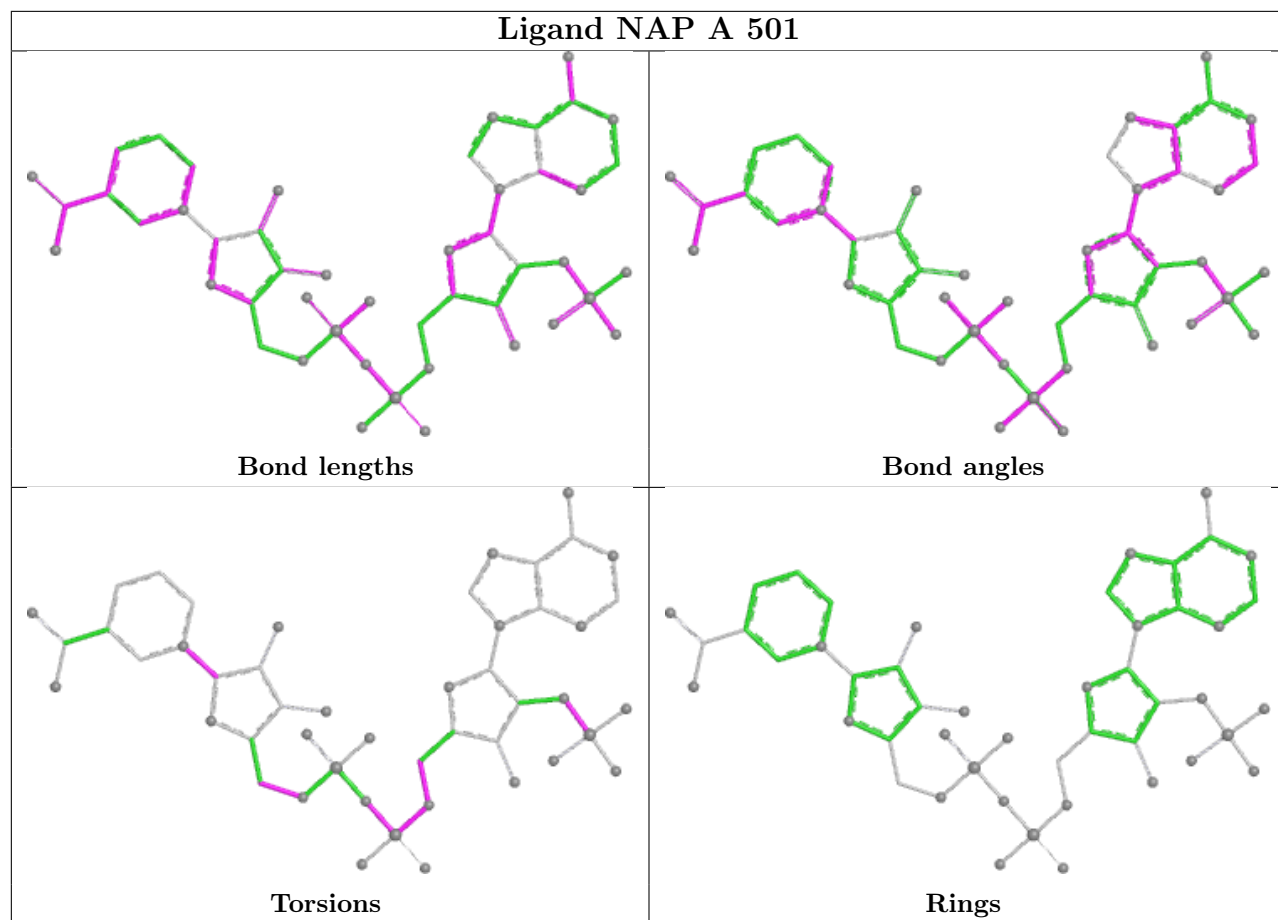
There are no ring outliers.

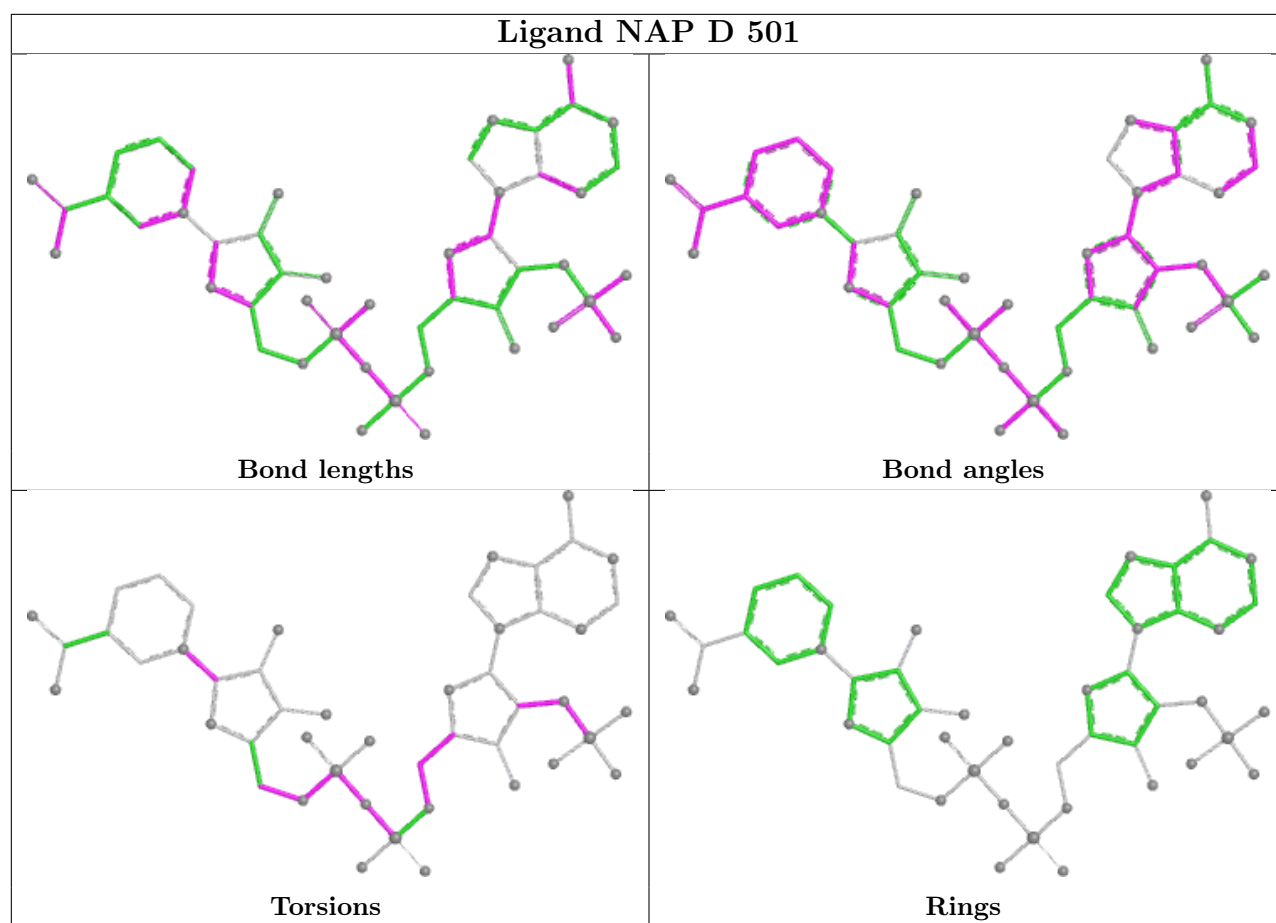
7 monomers are involved in 11 short contacts:

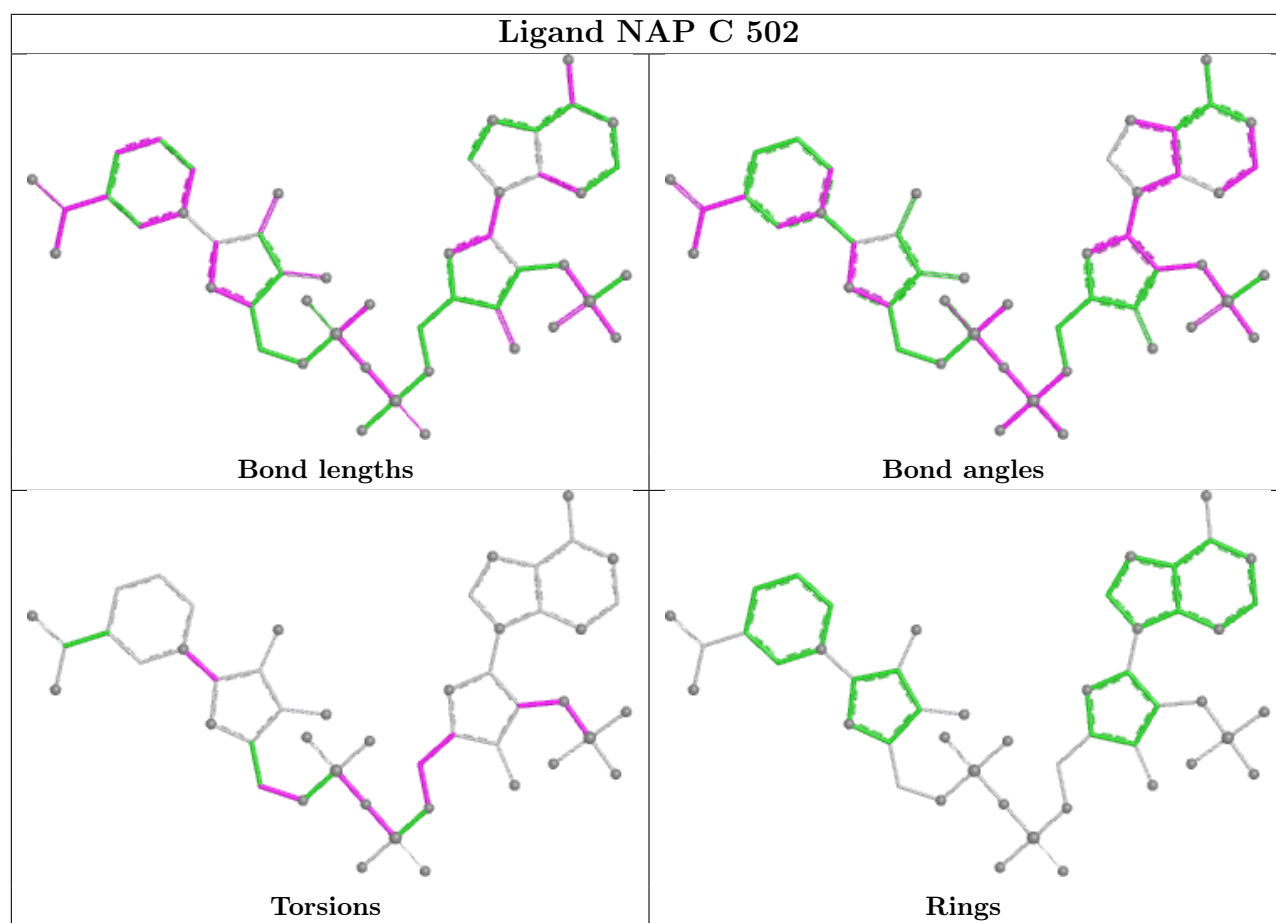
Mol	Chain	Res	Type	Clashes	Symm-Clashes
5	A	510	ACT	2	0
6	B	501	HMG	3	0
3	A	503	GOL	3	0
5	A	512	ACT	2	0
2	D	501	NAP	1	0
3	B	504	GOL	3	0
5	A	509	ACT	1	0

The following is a two-dimensional graphical depiction of Mogul quality analysis of bond lengths, bond angles, torsion angles, and ring geometry for all instances of the Ligand of Interest. In addition, ligands with molecular weight > 250 and outliers as shown on the validation Tables will also be included. For torsion angles, if less than 5% of the Mogul distribution of torsion angles is within 10 degrees of the torsion angle in question, then that torsion angle is considered an outlier. Any bond that is central to one or more torsion angles identified as an outlier by Mogul will be highlighted in the graph. For rings, the root-mean-square deviation (RMSD) between the ring in question and similar rings identified by Mogul is calculated over all ring torsion angles. If the average RMSD is greater than 60 degrees and the minimal RMSD between the ring in question and any Mogul-identified rings is also greater than 60 degrees, then that ring is considered an outlier. The outliers are highlighted in purple. The color gray indicates Mogul did not find sufficient equivalents in the CSD to analyse the geometry.









## 5.7 Other polymers [i](#)

There are no such residues in this entry.

## 5.8 Polymer linkage issues [i](#)

There are no chain breaks in this entry.

## 6 Fit of model and data [i](#)

### 6.1 Protein, DNA and RNA chains [i](#)

In the following table, the column labelled ‘#RSRZ > 2’ contains the number (and percentage) of RSRZ outliers, followed by percent RSRZ outliers for the chain as percentile scores relative to all X-ray entries and entries of similar resolution. The OWAB column contains the minimum, median, 95<sup>th</sup> percentile and maximum values of the occupancy-weighted average B-factor per residue. The column labelled ‘Q < 0.9’ lists the number of (and percentage) of residues with an average occupancy less than 0.9.

Mol	Chain	Analysed	<RSRZ>	#RSRZ>2	OWAB(Å <sup>2</sup> )	Q<0.9
1	A	358/430 (83%)	-0.26	5 (1%) 73 74	16, 42, 74, 96	25 (6%)
1	B	425/430 (98%)	0.11	22 (5%) 34 35	22, 49, 104, 128	17 (4%)
1	C	422/430 (98%)	0.26	22 (5%) 34 35	25, 65, 117, 145	15 (3%)
1	D	357/430 (83%)	0.39	6 (1%) 69 70	28, 72, 112, 136	13 (3%)
All	All	1562/1720 (90%)	0.13	55 (3%) 47 49	16, 59, 108, 145	70 (4%)

The worst 5 of 55 RSRZ outliers are listed below:

Mol	Chain	Res	Type	RSRZ
1	B	-4	PRO	5.1
1	B	3	LEU	5.0
1	C	200	TRP	4.4
1	B	389	GLY	4.3
1	A	369[A]	SER	3.8

### 6.2 Non-standard residues in protein, DNA, RNA chains [i](#)

There are no non-standard protein/DNA/RNA residues in this entry.

### 6.3 Carbohydrates [i](#)

There are no monosaccharides in this entry.

### 6.4 Ligands [i](#)

In the following table, the Atoms column lists the number of modelled atoms in the group and the number defined in the chemical component dictionary. The B-factors column lists the minimum, median, 95<sup>th</sup> percentile and maximum values of B factors of atoms in the group. The column labelled ‘Q < 0.9’ lists the number of atoms with occupancy less than 0.9.

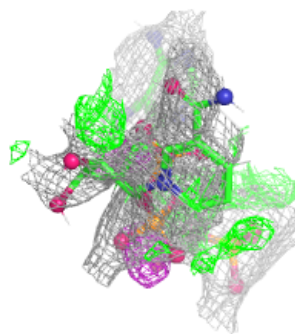
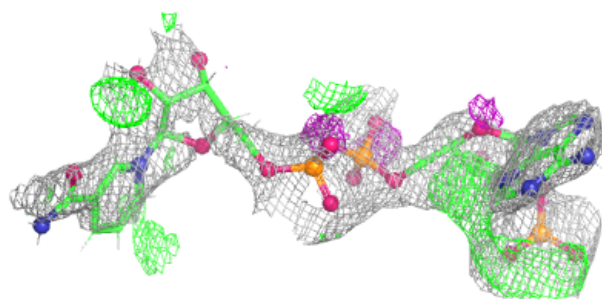
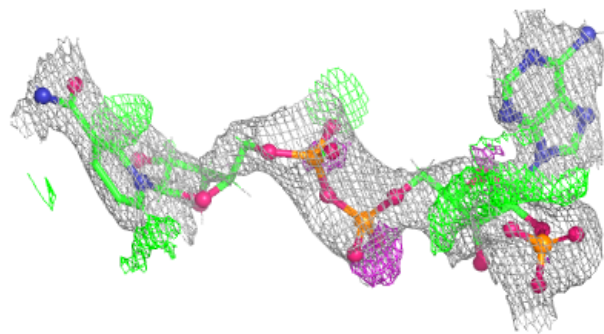
Mol	Type	Chain	Res	Atoms	RSCC	RSR	B-factors( $\text{\AA}^2$ )	Q<0.9
3	GOL	C	504	6/6	0.63	0.13	70,85,98,98	0
5	ACT	A	507	4/4	0.69	0.27	55,64,86,86	0
3	GOL	B	504	6/6	0.71	0.21	57,70,92,111	0
5	ACT	A	512	4/4	0.73	0.25	59,71,76,79	0
3	GOL	A	504	6/6	0.74	0.11	76,91,98,101	0
2	NAP	C	502	48/48	0.76	0.17	72,88,108,122	73
2	NAP	A	501	48/48	0.76	0.21	38,54,72,86	73
5	ACT	A	511	4/4	0.76	0.21	60,67,72,72	0
2	NAP	B	502	48/48	0.76	0.18	56,72,92,100	73
5	ACT	C	507	4/4	0.78	0.16	52,61,73,73	0
5	ACT	A	510	4/4	0.81	0.16	48,56,64,64	0
4	CA	D	503	1/1	0.82	0.10	89,89,89,89	0
5	ACT	C	508	4/4	0.82	0.29	56,68,81,81	0
3	GOL	A	503	6/6	0.84	0.14	62,75,87,91	0
5	ACT	A	509	4/4	0.85	0.13	51,57,63,63	0
4	CA	C	505	1/1	0.86	0.37	103,103,103,103	0
5	ACT	B	506	4/4	0.87	0.16	44,50,53,53	7
3	GOL	B	503	6/6	0.89	0.14	71,89,101,107	0
5	ACT	A	508	4/4	0.90	0.12	55,57,69,69	0
4	CA	C	506	1/1	0.90	0.13	93,93,93,93	0
3	GOL	C	503	6/6	0.92	0.09	51,62,66,69	14
2	NAP	D	501	48/48	0.92	0.10	44,55,69,72	0
7	MEV	C	501	10/10	0.92	0.10	48,57,66,69	0
3	GOL	A	502	6/6	0.94	0.10	60,72,85,85	0
6	HMG	B	501	58/58	0.95	0.08	30,42,59,64	0
4	CA	B	505	1/1	0.96	0.10	76,76,76,76	0
4	CA	D	502	1/1	0.96	0.09	77,77,77,77	0
4	CA	A	505	1/1	0.97	0.07	58,58,58,58	0
4	CA	A	506	1/1	0.97	0.05	54,54,54,54	0

The following is a graphical depiction of the model fit to experimental electron density of all instances of the Ligand of Interest. In addition, ligands with molecular weight > 250 and outliers as shown on the geometry validation Tables will also be included. Each fit is shown from different orientation to approximate a three-dimensional view.

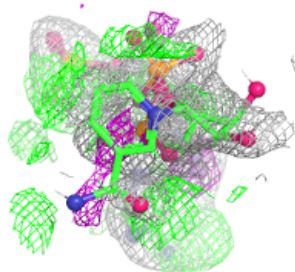
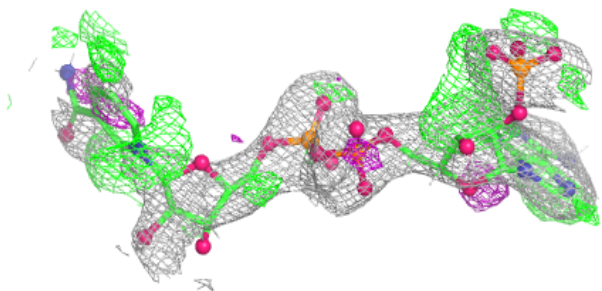
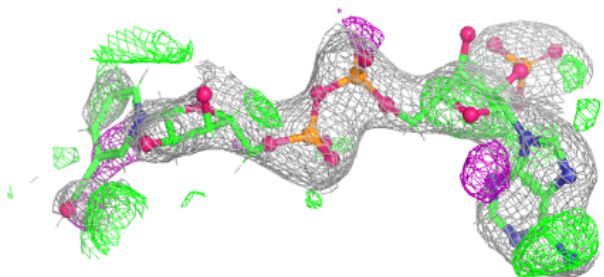


**Electron density around NAP C 502:**

$2mF_o-DF_c$  (at 0.7 rmsd) in gray  
 $mF_o-DF_c$  (at 3 rmsd) in purple (negative)  
and green (positive)

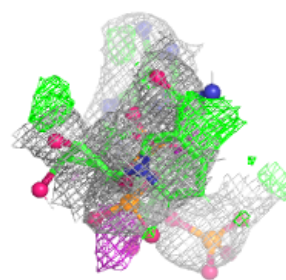
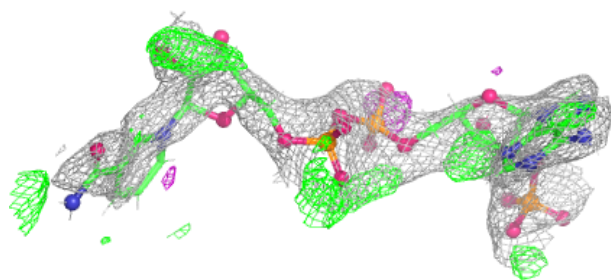
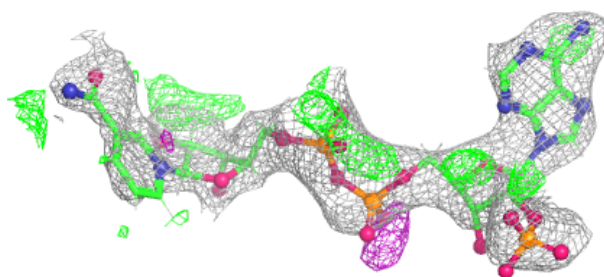
**Electron density around NAP A 501:**

$2mF_o-DF_c$  (at 0.7 rmsd) in gray  
 $mF_o-DF_c$  (at 3 rmsd) in purple (negative)  
and green (positive)

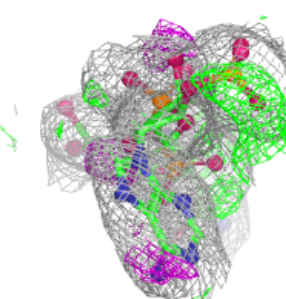
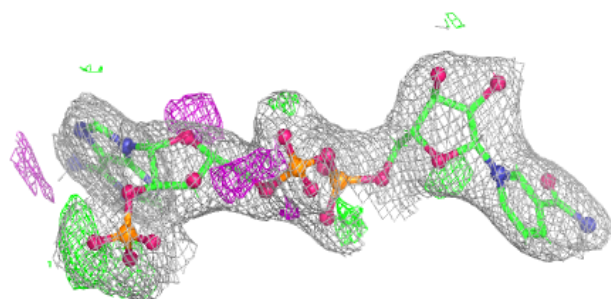
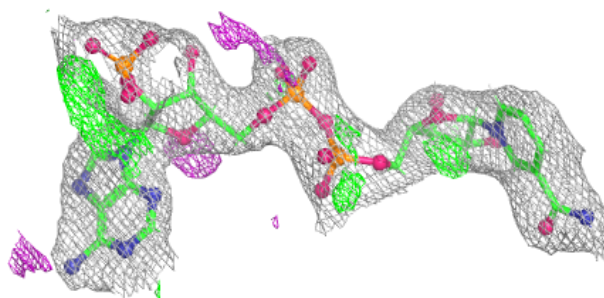


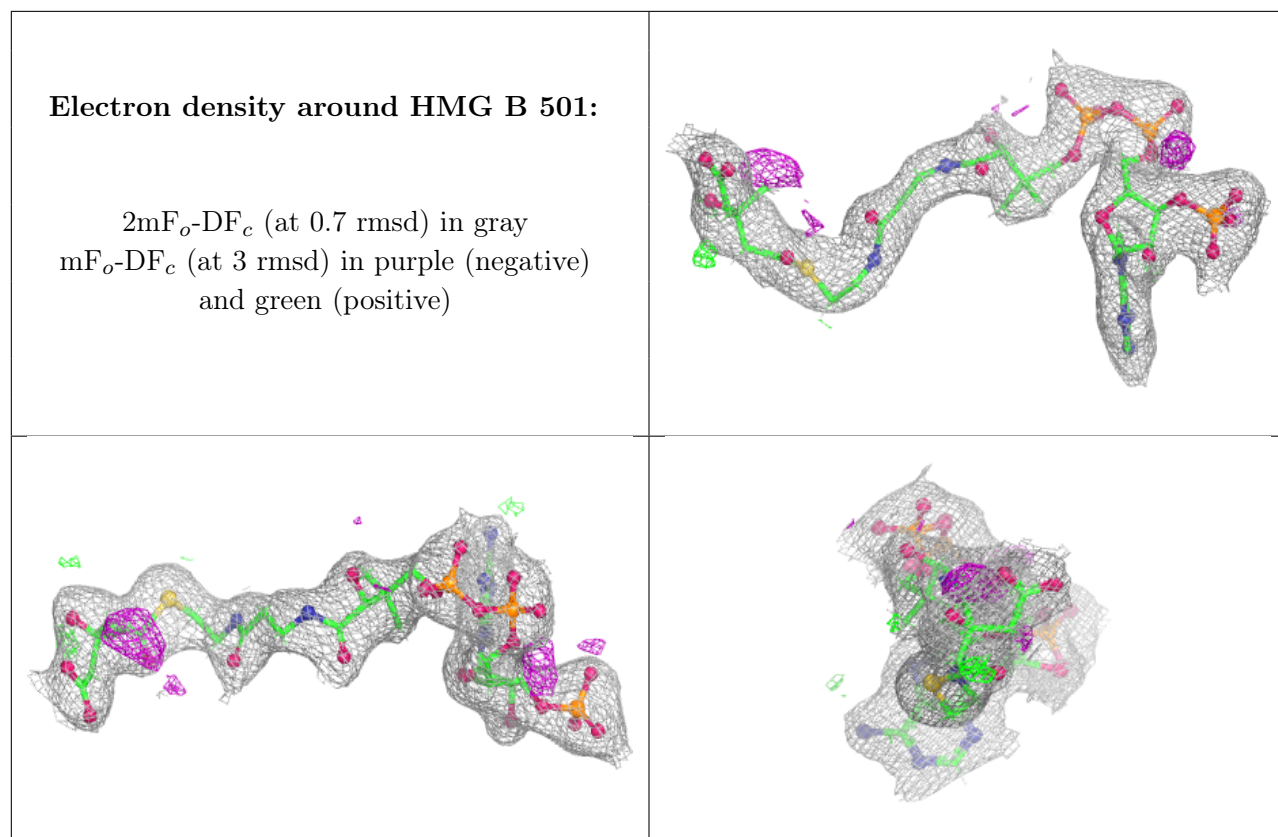
**Electron density around NAP B 502:**

$2mF_o-DF_c$  (at 0.7 rmsd) in gray  
 $mF_o-DF_c$  (at 3 rmsd) in purple (negative)  
and green (positive)

**Electron density around NAP D 501:**

$2mF_o-DF_c$  (at 0.7 rmsd) in gray  
 $mF_o-DF_c$  (at 3 rmsd) in purple (negative)  
and green (positive)





## 6.5 Other polymers [i](#)

There are no such residues in this entry.