



Full wwPDB X-ray Structure Validation Report ⓘ

Jul 14, 2025 – 04:08 PM JST

PDB ID : 9LMV / pdb_00009lmv
Title : Crystal structure of FAST-ACC-T140D/R132G/S160A mutant in complex with mono(2-hydroxyethyl) terephthalic acid
Authors : Li, X.; Ning, Z.Y.; Huang, S.Q.; Zeng, C.; Zeng, Z.Y.; Ji, R.; Huang, J.-W.; Chen, C.-C.; Guo, R.-T.
Deposited on : 2025-01-20
Resolution : 1.57 Å(reported)

This is a Full wwPDB X-ray Structure Validation Report for a publicly released PDB entry.

We welcome your comments at validation@mail.wwpdb.org

A user guide is available at

<https://www.wwpdb.org/validation/2017/XrayValidationReportHelp>

with specific help available everywhere you see the ⓘ symbol.

The types of validation reports are described at

<http://www.wwpdb.org/validation/2017/FAQs#types>.

The following versions of software and data (see [references ⓘ](#)) were used in the production of this report:

MolProbity	:	4-5-2 with Phenix2.0rc1
Mogul	:	1.8.5 (274361), CSD as541be (2020)
Xtriage (Phenix)	:	2.0rc1
EDS	:	3.0
buster-report	:	1.1.7 (2018)
Percentile statistics	:	20231227.v01 (using entries in the PDB archive December 27th 2023)
CCP4	:	9.0.006 (Gargrove)
Density-Fitness	:	1.0.12
Ideal geometry (proteins)	:	Engh & Huber (2001)
Ideal geometry (DNA, RNA)	:	Parkinson et al. (1996)
Validation Pipeline (wwPDB-VP)	:	2.44

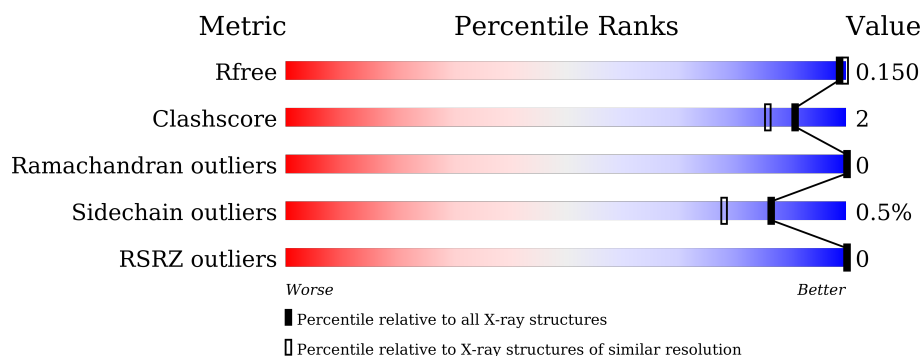
1 Overall quality at a glance

The following experimental techniques were used to determine the structure:

X-RAY DIFFRACTION


The reported resolution of this entry is 1.57 Å.

Percentile scores (ranging between 0-100) for global validation metrics of the entry are shown in the following graphic. The table shows the number of entries on which the scores are based.



Metric	Whole archive (#Entries)	Similar resolution (#Entries, resolution range(Å))
R_{free}	164625	7165 (1.60-1.56)
Clashscore	180529	1026 (1.58-1.58)
Ramachandran outliers	177936	1005 (1.58-1.58)
Sidechain outliers	177891	1004 (1.58-1.58)
RSRZ outliers	164620	7163 (1.60-1.56)

The table below summarises the geometric issues observed across the polymeric chains and their fit to the electron density. The red, orange, yellow and green segments of the lower bar indicate the fraction of residues that contain outliers for ≥ 3 , 2, 1 and 0 types of geometric quality criteria respectively. A grey segment represents the fraction of residues that are not modelled. The numeric value for each fraction is indicated below the corresponding segment, with a dot representing fractions $\leq 5\%$. The upper red bar (where present) indicates the fraction of residues that have poor fit to the electron density. The numeric value is given above the bar.

Mol	Chain	Length	Quality of chain
1	A	263	

The following table lists non-polymeric compounds, carbohydrate monomers and non-standard residues in protein, DNA, RNA chains that are outliers for geometric or electron-density-fit criteria:

Mol	Type	Chain	Res	Chirality	Geometry	Clashes	Electron density
2	C9C	A	301	-	X	-	-

2 Entry composition

There are 3 unique types of molecules in this entry. The entry contains 2229 atoms, of which 0 are hydrogens and 0 are deuteriums.

In the tables below, the ZeroOcc column contains the number of atoms modelled with zero occupancy, the AltConf column contains the number of residues with at least one atom in alternate conformation and the Trace column contains the number of residues modelled with at most 2 atoms.

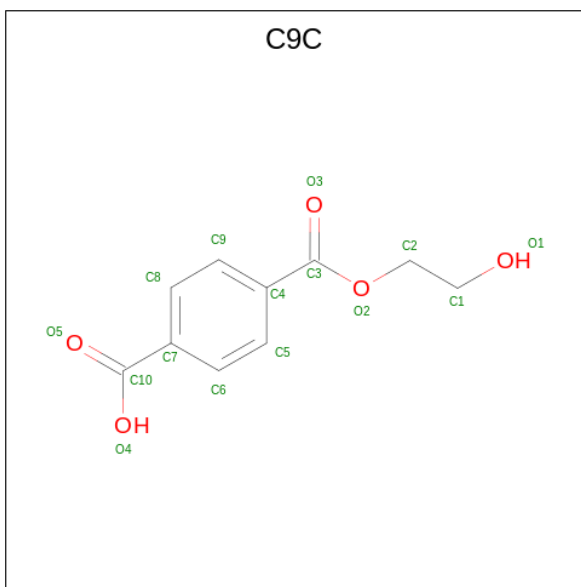
- Molecule 1 is a protein called Poly(ethylene terephthalate) hydrolase.

Mol	Chain	Residues	Atoms					ZeroOcc	AltConf	Trace
1	A	263	Total	C	N	O	S	0	3	0
			1922	1190	337	382	13			

There are 12 discrepancies between the modelled and reference sequences:

Chain	Residue	Modelled	Actual	Comment	Reference
A	28	GLY	-	expression tag	UNP A0A0K8P6T7
A	29	ALA	-	expression tag	UNP A0A0K8P6T7
A	121	GLU	SER	conflict	UNP A0A0K8P6T7
A	132	GLY	ARG	engineered mutation	UNP A0A0K8P6T7
A	140	ASP	THR	engineered mutation	UNP A0A0K8P6T7
A	160	ALA	SER	engineered mutation	UNP A0A0K8P6T7
A	186	HIS	ASP	conflict	UNP A0A0K8P6T7
A	212	ALA	ASN	conflict	UNP A0A0K8P6T7
A	224	GLN	ARG	conflict	UNP A0A0K8P6T7
A	233	CYS	ASN	conflict	UNP A0A0K8P6T7
A	280	ALA	ARG	conflict	UNP A0A0K8P6T7
A	282	CYS	SER	conflict	UNP A0A0K8P6T7

- Molecule 2 is 4-(2-hydroxyethoxycarbonyl)benzoic acid (CCD ID: C9C) (formula: C₁₀H₁₀O₅) (labeled as "Ligand of Interest" by depositor).



Mol	Chain	Residues	Atoms			ZeroOcc	AltConf
2	A	1	Total	C	O	0	0
			15	10	5		

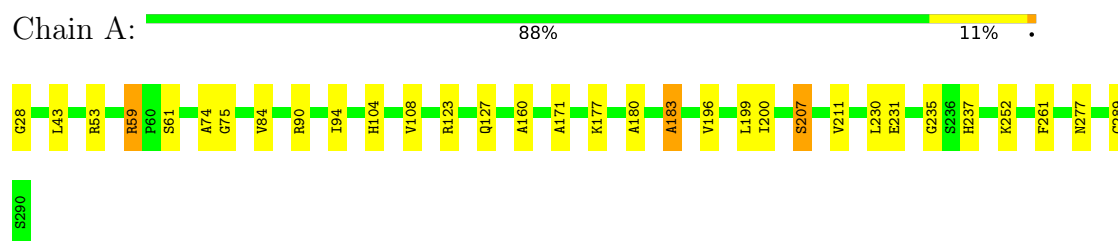
- Molecule 3 is water.

Mol	Chain	Residues	Atoms		ZeroOcc	AltConf
3	A	292	Total	O	0	0
			292	292		

3 Residue-property plots

These plots are drawn for all protein, RNA, DNA and oligosaccharide chains in the entry. The first graphic for a chain summarises the proportions of the various outlier classes displayed in the second graphic. The second graphic shows the sequence view annotated by issues in geometry and electron density. Residues are color-coded according to the number of geometric quality criteria for which they contain at least one outlier: green = 0, yellow = 1, orange = 2 and red = 3 or more. A red dot above a residue indicates a poor fit to the electron density ($RSRZ > 2$). Stretches of 2 or more consecutive residues without any outlier are shown as a green connector. Residues present in the sample, but not in the model, are shown in grey.

- Molecule 1: Poly(ethylene terephthalate) hydrolase



4 Data and refinement statistics

Property	Value	Source
Space group	P 21 21 21	Depositor
Cell constants a, b, c, α , β , γ	50.85Å 50.96Å 83.97Å 90.00° 90.00° 90.00°	Depositor
Resolution (Å)	24.54 – 1.57 24.54 – 1.57	Depositor EDS
% Data completeness (in resolution range)	95.9 (24.54-1.57) 95.9 (24.54-1.57)	Depositor EDS
R_{merge}	0.05	Depositor
R_{sym}	(Not available)	Depositor
$\langle I/\sigma(I) \rangle$ ¹	31.42 (at 1.57Å)	Xtriage
Refinement program	REFMAC 5.8.0238	Depositor
R, R_{free}	0.098 , 0.150 0.098 , 0.150	Depositor DCC
R_{free} test set	1492 reflections (4.76%)	wwPDB-VP
Wilson B-factor (Å ²)	7.6	Xtriage
Anisotropy	0.376	Xtriage
Bulk solvent k_{sol} (e/Å ³), B_{sol} (Å ²)	0.41 , 56.7	EDS
L-test for twinning ²	$\langle L \rangle = 0.49$, $\langle L^2 \rangle = 0.32$	Xtriage
Estimated twinning fraction	0.021 for k,h,-l	Xtriage
F_o, F_c correlation	0.97	EDS
Total number of atoms	2229	wwPDB-VP
Average B, all atoms (Å ²)	9.0	wwPDB-VP

Xtriage's analysis on translational NCS is as follows: *The largest off-origin peak in the Patterson function is 6.44% of the height of the origin peak. No significant pseudotranslation is detected.*

¹Intensities estimated from amplitudes.

²Theoretical values of $\langle |L| \rangle$, $\langle L^2 \rangle$ for acentric reflections are 0.5, 0.333 respectively for untwinned datasets, and 0.375, 0.2 for perfectly twinned datasets.

5 Model quality

5.1 Standard geometry

Bond lengths and bond angles in the following residue types are not validated in this section: C9C

The Z score for a bond length (or angle) is the number of standard deviations the observed value is removed from the expected value. A bond length (or angle) with $|Z| > 5$ is considered an outlier worth inspection. RMSZ is the root-mean-square of all Z scores of the bond lengths (or angles).

Mol	Chain	Bond lengths		Bond angles	
		RMSZ	$\# Z > 5$	RMSZ	$\# Z > 5$
1	A	1.60	18/1977 (0.9%)	1.34	10/2693 (0.4%)

Chiral center outliers are detected by calculating the chiral volume of a chiral center and verifying if the center is modelled as a planar moiety or with the opposite hand. A planarity outlier is detected by checking planarity of atoms in a peptide group, atoms in a mainchain group or atoms of a sidechain that are expected to be planar.

Mol	Chain	#Chirality outliers	#Planarity outliers
1	A	0	1

All (18) bond length outliers are listed below:

Mol	Chain	Res	Type	Atoms	Z	Observed(Å)	Ideal(Å)
1	A	237	HIS	CE1-NE2	10.80	1.43	1.32
1	A	74	ALA	C-O	8.23	1.34	1.24
1	A	289	CYS	C-O	-8.08	1.14	1.23
1	A	59	ARG	NE-CZ	8.07	1.42	1.33
1	A	277	ASN	C-O	-7.72	1.13	1.23
1	A	28	GLY	N-CA	7.69	1.57	1.45
1	A	200	ILE	CG1-CD1	-6.89	1.24	1.51
1	A	231	GLU	CD-OE2	-6.17	1.13	1.25
1	A	53	ARG	NE-CZ	5.94	1.39	1.33
1	A	104	HIS	ND1-CE1	5.84	1.38	1.32
1	A	90	ARG	NE-CZ	-5.62	1.26	1.33
1	A	108	VAL	C-O	-5.62	1.18	1.24
1	A	183	ALA	CA-C	-5.51	1.50	1.53
1	A	196	VAL	CA-C	5.46	1.57	1.53
1	A	230	LEU	CG-CD1	-5.36	1.34	1.52
1	A	211	VAL	CA-C	-5.21	1.46	1.52
1	A	252	LYS	N-CA	5.13	1.52	1.46
1	A	171	ALA	C-O	5.09	1.30	1.24

All (10) bond angle outliers are listed below:

Mol	Chain	Res	Type	Atoms	Z	Observed(°)	Ideal(°)
1	A	74	ALA	CA-C-N	-8.23	109.11	122.20
1	A	74	ALA	C-N-CA	-8.23	109.11	122.20
1	A	237	HIS	CE1-NE2-CD2	-7.00	102.00	109.00
1	A	207	SER	CA-CB-OG	-6.71	97.68	111.10
1	A	183	ALA	CB-CA-C	6.32	116.65	110.71
1	A	75	GLY	CA-C-O	5.63	125.24	119.10
1	A	230	LEU	CD1-CG-CD2	-5.49	98.72	110.80
1	A	43	LEU	CD1-CG-CD2	5.29	122.44	110.80
1	A	94	ILE	CG1-CB-CG2	5.13	126.09	110.70
1	A	235	GLY	CA-C-O	-5.05	117.04	121.58

There are no chirality outliers.

All (1) planarity outliers are listed below:

Mol	Chain	Res	Type	Group
1	A	123	ARG	Sidechain

5.2 Too-close contacts

In the following table, the Non-H and H(model) columns list the number of non-hydrogen atoms and hydrogen atoms in the chain respectively. The H(added) column lists the number of hydrogen atoms added and optimized by MolProbity. The Clashes column lists the number of clashes within the asymmetric unit, whereas Symm-Clashes lists symmetry-related clashes.

Mol	Chain	Non-H	H(model)	H(added)	Clashes	Symm-Clashes
1	A	1922	0	1842	6	0
2	A	15	0	0	0	0
3	A	292	0	0	2	0
All	All	2229	0	1842	6	0

The all-atom clashscore is defined as the number of clashes found per 1000 atoms (including hydrogen atoms). The all-atom clashscore for this structure is 2.

All (6) close contacts within the same asymmetric unit are listed below, sorted by their clash magnitude.

Atom-1	Atom-2	Interatomic distance (Å)	Clash overlap (Å)
1:A:59:ARG:NH1	3:A:401:HOH:O	2.07	0.86
1:A:61:SER:HA	3:A:401:HOH:O	2.07	0.53
1:A:177:LYS:HE2	1:A:261:PHE:O	2.12	0.50

Continued on next page...

Continued from previous page...

Atom-1	Atom-2	Interatomic distance (Å)	Clash overlap (Å)
1:A:180:ALA:HA	1:A:199:LEU:O	2.18	0.44
1:A:160:ALA:HA	1:A:183:ALA:O	2.19	0.41
1:A:84:VAL:HG21	1:A:127:GLN:HB2	2.03	0.41

There are no symmetry-related clashes.

5.3 Torsion angles [i](#)

5.3.1 Protein backbone [i](#)

In the following table, the Percentiles column shows the percent Ramachandran outliers of the chain as a percentile score with respect to all X-ray entries followed by that with respect to entries of similar resolution.

The Analysed column shows the number of residues for which the backbone conformation was analysed, and the total number of residues.

Mol	Chain	Analysed	Favoured	Allowed	Outliers	Percentiles	
1	A	264/263 (100%)	259 (98%)	5 (2%)	0	100	100

There are no Ramachandran outliers to report.

5.3.2 Protein sidechains [i](#)

In the following table, the Percentiles column shows the percent sidechain outliers of the chain as a percentile score with respect to all X-ray entries followed by that with respect to entries of similar resolution.

The Analysed column shows the number of residues for which the sidechain conformation was analysed, and the total number of residues.

Mol	Chain	Analysed	Rotameric	Outliers	Percentiles	
1	A	206/203 (102%)	205 (100%)	1 (0%)	86	78

All (1) residues with a non-rotameric sidechain are listed below:

Mol	Chain	Res	Type
1	A	207	SER

Sometimes sidechains can be flipped to improve hydrogen bonding and reduce clashes. All (3) such

sidechains are listed below:

Mol	Chain	Res	Type
1	A	91	GLN
1	A	247	GLN
1	A	277	ASN

5.3.3 RNA [i](#)

There are no RNA molecules in this entry.

5.4 Non-standard residues in protein, DNA, RNA chains [i](#)

There are no non-standard protein/DNA/RNA residues in this entry.

5.5 Carbohydrates [i](#)

There are no oligosaccharides in this entry.

5.6 Ligand geometry [i](#)

1 ligand is modelled in this entry.

In the following table, the Counts columns list the number of bonds (or angles) for which Mogul statistics could be retrieved, the number of bonds (or angles) that are observed in the model and the number of bonds (or angles) that are defined in the Chemical Component Dictionary. The Link column lists molecule types, if any, to which the group is linked. The Z score for a bond length (or angle) is the number of standard deviations the observed value is removed from the expected value. A bond length (or angle) with $|Z| > 2$ is considered an outlier worth inspection. RMSZ is the root-mean-square of all Z scores of the bond lengths (or angles).

Mol	Type	Chain	Res	Link	Bond lengths			Bond angles		
					Counts	RMSZ	# $ Z > 2$	Counts	RMSZ	# $ Z > 2$
2	C9C	A	301	-	15,15,15	3.32	10 (66%)	19,19,19	2.43	6 (31%)

In the following table, the Chirals column lists the number of chiral outliers, the number of chiral centers analysed, the number of these observed in the model and the number defined in the Chemical Component Dictionary. Similar counts are reported in the Torsion and Rings columns. '-' means no outliers of that kind were identified.

Mol	Type	Chain	Res	Link	Chirals	Torsions	Rings
2	C9C	A	301	-	-	4/12/12/12	0/1/1/1

All (10) bond length outliers are listed below:

Mol	Chain	Res	Type	Atoms	Z	Observed(Å)	Ideal(Å)
2	A	301	C9C	C6-C5	5.83	1.49	1.38
2	A	301	C9C	C7-C10	-5.20	1.38	1.49
2	A	301	C9C	O5-C10	4.70	1.36	1.22
2	A	301	C9C	C9-C8	4.23	1.46	1.38
2	A	301	C9C	C8-C7	-3.62	1.33	1.39
2	A	301	C9C	C6-C7	3.58	1.45	1.39
2	A	301	C9C	C4-C3	-3.47	1.41	1.50
2	A	301	C9C	C5-C4	-2.78	1.34	1.39
2	A	301	C9C	O4-C10	-2.70	1.22	1.30
2	A	301	C9C	O1-C1	-2.26	1.30	1.42

All (6) bond angle outliers are listed below:

Mol	Chain	Res	Type	Atoms	Z	Observed(°)	Ideal(°)
2	A	301	C9C	O4-C10-C7	5.32	128.64	114.85
2	A	301	C9C	O4-C10-O5	-5.29	111.61	123.35
2	A	301	C9C	C6-C5-C4	-3.94	116.20	120.78
2	A	301	C9C	O2-C3-C4	3.80	118.76	112.14
2	A	301	C9C	C8-C9-C4	2.15	123.28	120.78
2	A	301	C9C	C8-C7-C10	2.01	124.35	120.39

There are no chirality outliers.

All (4) torsion outliers are listed below:

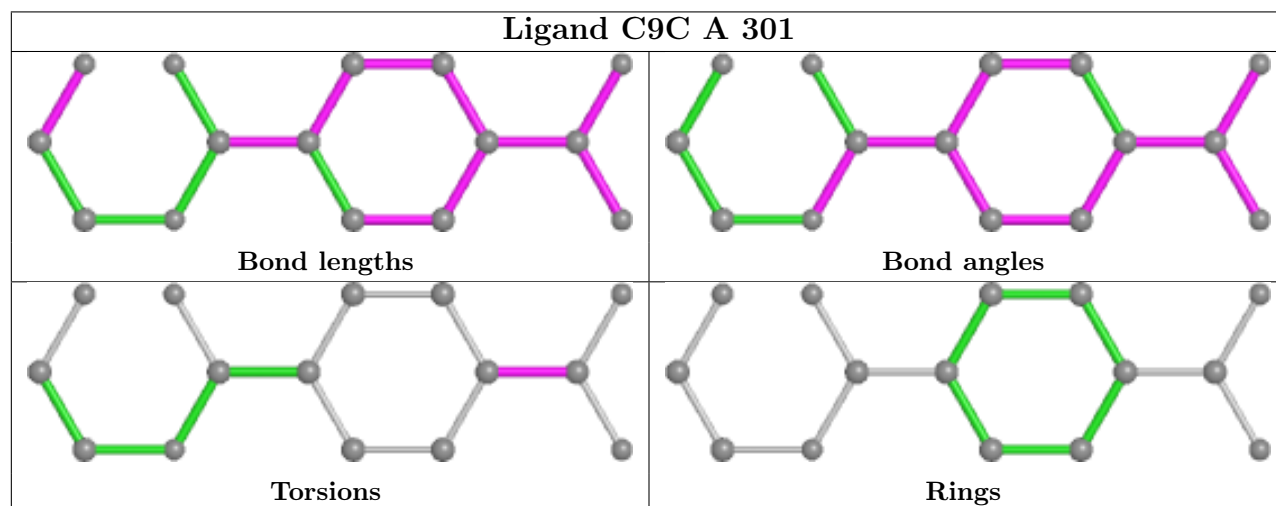
Mol	Chain	Res	Type	Atoms
2	A	301	C9C	O4-C10-C7-C6
2	A	301	C9C	O5-C10-C7-C6
2	A	301	C9C	O4-C10-C7-C8
2	A	301	C9C	O5-C10-C7-C8

There are no ring outliers.

No monomer is involved in short contacts.

The following is a two-dimensional graphical depiction of Mogul quality analysis of bond lengths, bond angles, torsion angles, and ring geometry for all instances of the Ligand of Interest. In addition, ligands with molecular weight > 250 and outliers as shown on the validation Tables will also be included. For torsion angles, if less than 5% of the Mogul distribution of torsion angles is within 10 degrees of the torsion angle in question, then that torsion angle is considered an outlier. Any bond that is central to one or more torsion angles identified as an outlier by Mogul will be highlighted in the graph. For rings, the root-mean-square deviation (RMSD) between the ring in question and similar rings identified by Mogul is calculated over all ring torsion angles. If the

average RMSD is greater than 60 degrees and the minimal RMSD between the ring in question and any Mogul-identified rings is also greater than 60 degrees, then that ring is considered an outlier. The outliers are highlighted in purple. The color gray indicates Mogul did not find sufficient equivalents in the CSD to analyse the geometry.



5.7 Other polymers [i](#)

There are no such residues in this entry.

5.8 Polymer linkage issues [i](#)

There are no chain breaks in this entry.

6 Fit of model and data [i](#)

6.1 Protein, DNA and RNA chains [i](#)

In the following table, the column labelled ‘#RSRZ> 2’ contains the number (and percentage) of RSRZ outliers, followed by percent RSRZ outliers for the chain as percentile scores relative to all X-ray entries and entries of similar resolution. The OWAB column contains the minimum, median, 95th percentile and maximum values of the occupancy-weighted average B-factor per residue. The column labelled ‘Q< 0.9’ lists the number of (and percentage) of residues with an average occupancy less than 0.9.

Mol	Chain	Analysed	<RSRZ>	#RSRZ>2	OWAB(Å ²)	Q<0.9
1	A	263/263 (100%)	-0.78	0 100 100	3, 7, 13, 42	3 (1%)

There are no RSRZ outliers to report.

6.2 Non-standard residues in protein, DNA, RNA chains [i](#)

There are no non-standard protein/DNA/RNA residues in this entry.

6.3 Carbohydrates [i](#)

There are no oligosaccharides in this entry.

6.4 Ligands [i](#)

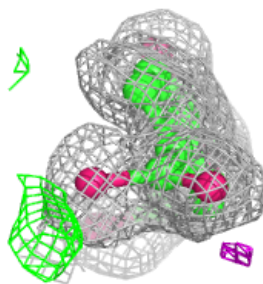
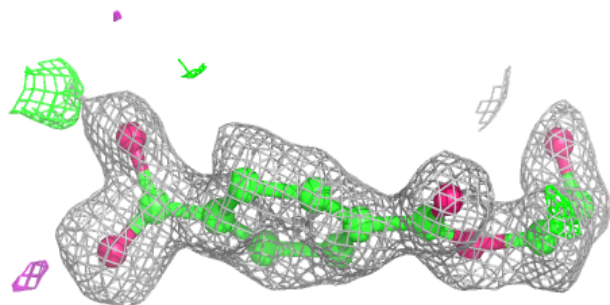
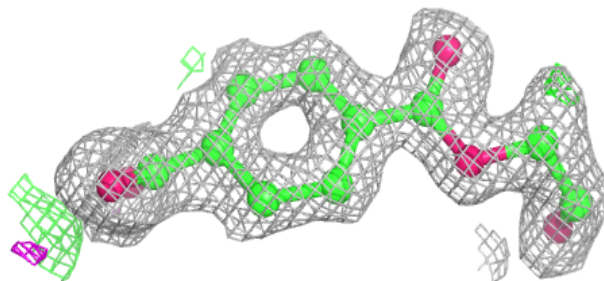
In the following table, the Atoms column lists the number of modelled atoms in the group and the number defined in the chemical component dictionary. The B-factors column lists the minimum, median, 95th percentile and maximum values of B factors of atoms in the group. The column labelled ‘Q< 0.9’ lists the number of atoms with occupancy less than 0.9.

Mol	Type	Chain	Res	Atoms	RSCC	RSR	B-factors(Å ²)	Q<0.9
2	C9C	A	301	15/15	0.96	0.06	6,15,23,25	0

The following is a graphical depiction of the model fit to experimental electron density of all instances of the Ligand of Interest. In addition, ligands with molecular weight > 250 and outliers as shown on the geometry validation Tables will also be included. Each fit is shown from different orientation to approximate a three-dimensional view.

Electron density around C9C A 301:

$2mF_o-DF_c$ (at 0.7 rmsd) in gray
 mF_o-DF_c (at 3 rmsd) in purple (negative)
and green (positive)



6.5 Other polymers [i](#)

There are no such residues in this entry.