



# Full wwPDB X-ray Structure Validation Report ⓘ

Nov 2, 2024 – 03:38 PM EDT

PDB ID : 3KX0  
Title : Crystal Structure of the PAS domain of Rv1364c  
Authors : Jaiswal, R.K.; Gopal, B.  
Deposited on : 2009-12-02  
Resolution : 2.30 Å(reported)

This is a Full wwPDB X-ray Structure Validation Report for a publicly released PDB entry.

We welcome your comments at [validation@mail.wwpdb.org](mailto:validation@mail.wwpdb.org)

A user guide is available at

<https://www.wwpdb.org/validation/2017/XrayValidationReportHelp>

with specific help available everywhere you see the ⓘ symbol.

The types of validation reports are described at

<http://www.wwpdb.org/validation/2017/FAQs#types>.

---

The following versions of software and data (see [references ⓘ](#)) were used in the production of this report:

MolProbity : 4.02b-467  
Mogul : 2022.3.0, CSD as543be (2022)  
Xtriage (Phenix) : 1.20.1  
EDS : 3.0  
Percentile statistics : 20231227.v01 (using entries in the PDB archive December 27th 2023)  
CCP4 : 9.0.003 (Gargrove)  
Density-Fitness : 1.0.11  
Ideal geometry (proteins) : Engh & Huber (2001)  
Ideal geometry (DNA, RNA) : Parkinson et al. (1996)  
Validation Pipeline (wwPDB-VP) : 2.39

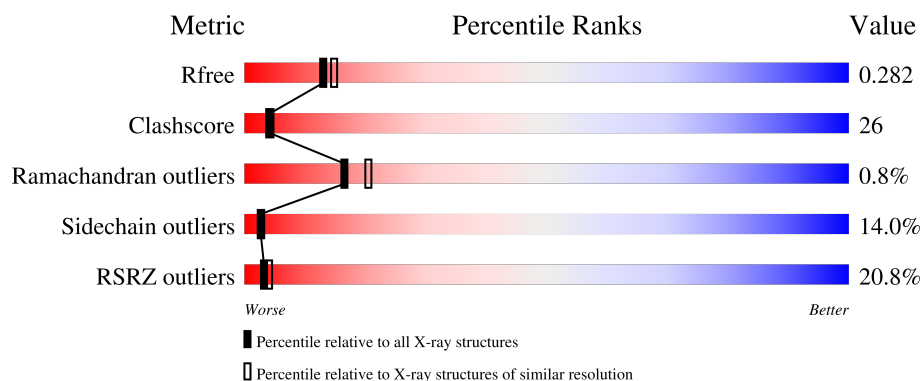
# 1 Overall quality at a glance

The following experimental techniques were used to determine the structure:

*X-RAY DIFFRACTION*

The reported resolution of this entry is 2.30 Å.

Percentile scores (ranging between 0-100) for global validation metrics of the entry are shown in the following graphic. The table shows the number of entries on which the scores are based.



Metric	Whole archive (#Entries)	Similar resolution (#Entries, resolution range(Å))
$R_{free}$	164625	5963 (2.30-2.30)
Clashscore	180529	6698 (2.30-2.30)
Ramachandran outliers	177936	6640 (2.30-2.30)
Sidechain outliers	177891	6640 (2.30-2.30)
RSRZ outliers	164620	5963 (2.30-2.30)

The table below summarises the geometric issues observed across the polymeric chains and their fit to the electron density. The red, orange, yellow and green segments of the lower bar indicate the fraction of residues that contain outliers for  $\geq 3$ , 2, 1 and 0 types of geometric quality criteria respectively. A grey segment represents the fraction of residues that are not modelled. The numeric value for each fraction is indicated below the corresponding segment, with a dot representing fractions  $\leq 5\%$ . The upper red bar (where present) indicates the fraction of residues that have poor fit to the electron density. The numeric value is given above the bar.

Mol	Chain	Length	Quality of chain
1	X	185	

## 2 Entry composition

There are 3 unique types of molecules in this entry. The entry contains 1003 atoms, of which 0 are hydrogens and 0 are deuteriums.

In the tables below, the ZeroOcc column contains the number of atoms modelled with zero occupancy, the AltConf column contains the number of residues with at least one atom in alternate conformation and the Trace column contains the number of residues modelled with at most 2 atoms.

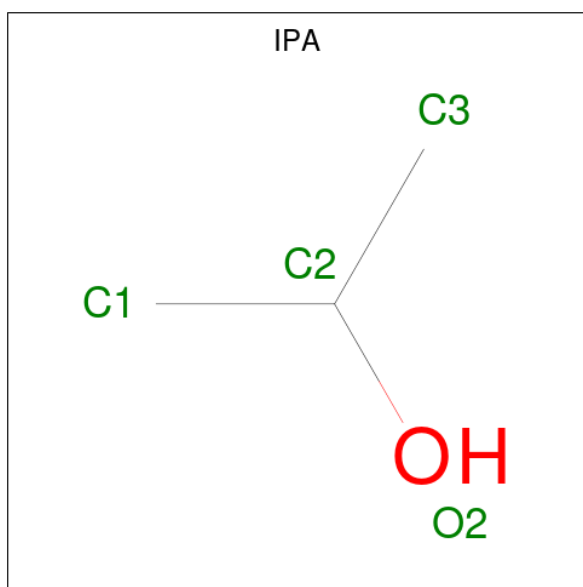
- Molecule 1 is a protein called Uncharacterized protein Rv1364c/MT1410.

Mol	Chain	Residues	Atoms					ZeroOcc	AltConf	Trace
1	X	127	Total	C	N	O	Se	0	0	0
			994	623	176	193	2			

There are 22 discrepancies between the modelled and reference sequences:

Chain	Residue	Modelled	Actual	Comment	Reference
X	-21	MSE	-	expression tag	UNP Q11034
X	-20	GLY	-	expression tag	UNP Q11034
X	-19	SER	-	expression tag	UNP Q11034
X	-18	SER	-	expression tag	UNP Q11034
X	-17	HIS	-	expression tag	UNP Q11034
X	-16	HIS	-	expression tag	UNP Q11034
X	-15	HIS	-	expression tag	UNP Q11034
X	-14	HIS	-	expression tag	UNP Q11034
X	-13	HIS	-	expression tag	UNP Q11034
X	-12	HIS	-	expression tag	UNP Q11034
X	-11	SER	-	expression tag	UNP Q11034
X	-10	SER	-	expression tag	UNP Q11034
X	-9	GLY	-	expression tag	UNP Q11034
X	-8	LEU	-	expression tag	UNP Q11034
X	-7	VAL	-	expression tag	UNP Q11034
X	-6	PRO	-	expression tag	UNP Q11034
X	-5	ARG	-	expression tag	UNP Q11034
X	-4	GLY	-	expression tag	UNP Q11034
X	-3	SER	-	expression tag	UNP Q11034
X	-2	HIS	-	expression tag	UNP Q11034
X	-1	ALA	-	expression tag	UNP Q11034
X	0	SER	-	expression tag	UNP Q11034

- Molecule 2 is ISOPROPYL ALCOHOL (three-letter code: IPA) (formula: C<sub>3</sub>H<sub>8</sub>O).



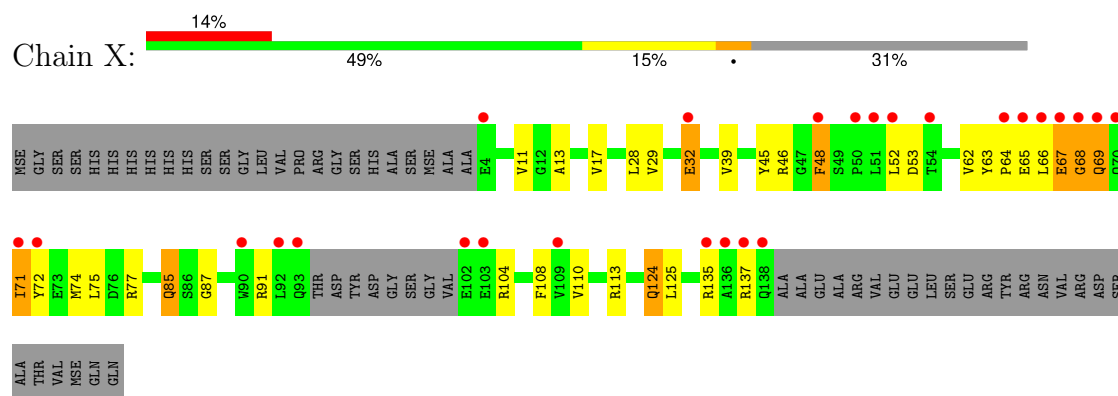
Mol	Chain	Residues	Atoms			ZeroOcc	AltConf
2	X	1	Total	C	O	0	0
			4	3	1		

- Molecule 3 is water.

Mol	Chain	Residues	Atoms		ZeroOcc	AltConf
3	X	5	Total	O	0	0
			5	5		



- Molecule 1: Uncharacterized protein Rv1364c/MT1410



## 4 Data and refinement statistics

Property	Value	Source
Space group	P 62 2 2	Depositor
Cell constants a, b, c, $\alpha$ , $\beta$ , $\gamma$	59.61Å 59.61Å 173.33Å 90.00° 90.00° 120.00°	Depositor
Resolution (Å)	49.48 – 2.30 49.48 – 2.30	Depositor EDS
% Data completeness (in resolution range)	96.4 (49.48-2.30) 96.5 (49.48-2.30)	Depositor EDS
$R_{merge}$	0.10	Depositor
$R_{sym}$	0.10	Depositor
$\langle I/\sigma(I) \rangle$ <sup>1</sup>	4.46 (at 2.29Å)	Xtriage
Refinement program	PHENIX (phenix.refine: 1.5_2)	Depositor
R, $R_{free}$	0.233 , 0.274 0.249 , 0.282	Depositor DCC
$R_{free}$ test set	415 reflections (4.72%)	wwPDB-VP
Wilson B-factor (Å <sup>2</sup> )	37.3	Xtriage
Anisotropy	0.712	Xtriage
Bulk solvent $k_{sol}$ (e/Å <sup>3</sup> ), $B_{sol}$ (Å <sup>2</sup> )	0.36 , 64.3	EDS
L-test for twinning <sup>2</sup>	$\langle  L  \rangle = 0.49$ , $\langle L^2 \rangle = 0.33$	Xtriage
Estimated twinning fraction	No twinning to report.	Xtriage
$F_o, F_c$ correlation	0.93	EDS
Total number of atoms	1003	wwPDB-VP
Average B, all atoms (Å <sup>2</sup> )	57.0	wwPDB-VP

Xtriage's analysis on translational NCS is as follows: *The largest off-origin peak in the Patterson function is 7.70% of the height of the origin peak. No significant pseudotranslation is detected.*

<sup>1</sup>Intensities estimated from amplitudes.

<sup>2</sup>Theoretical values of  $\langle |L| \rangle$ ,  $\langle L^2 \rangle$  for acentric reflections are 0.5, 0.333 respectively for untwinned datasets, and 0.375, 0.2 for perfectly twinned datasets.

## 5 Model quality

### 5.1 Standard geometry

Bond lengths and bond angles in the following residue types are not validated in this section: IPA

The Z score for a bond length (or angle) is the number of standard deviations the observed value is removed from the expected value. A bond length (or angle) with  $|Z| > 5$  is considered an outlier worth inspection. RMSZ is the root-mean-square of all Z scores of the bond lengths (or angles).

Mol	Chain	Bond lengths		Bond angles	
		RMSZ	$\# Z  > 5$	RMSZ	$\# Z  > 5$
1	X	0.48	0/1013	0.65	0/1374

There are no bond length outliers.

There are no bond angle outliers.

There are no chirality outliers.

There are no planarity outliers.

### 5.2 Too-close contacts

In the following table, the Non-H and H(model) columns list the number of non-hydrogen atoms and hydrogen atoms in the chain respectively. The H(added) column lists the number of hydrogen atoms added and optimized by MolProbity. The Clashes column lists the number of clashes within the asymmetric unit, whereas Symm-Clashes lists symmetry-related clashes.

Mol	Chain	Non-H	H(model)	H(added)	Clashes	Symm-Clashes
1	X	994	0	920	51	0
2	X	4	0	8	0	0
3	X	5	0	0	0	0
All	All	1003	0	928	51	0

The all-atom clashscore is defined as the number of clashes found per 1000 atoms (including hydrogen atoms). The all-atom clashscore for this structure is 26.

All (51) close contacts within the same asymmetric unit are listed below, sorted by their clash magnitude.

Atom-1	Atom-2	Interatomic distance (Å)	Clash overlap (Å)
1:X:74:MSE:CE	1:X:85:GLN:HG2	1.60	1.31

*Continued on next page...*

*Continued from previous page...*

Atom-1	Atom-2	Interatomic distance (Å)	Clash overlap (Å)
1:X:46:ARG:CD	1:X:52:LEU:HD11	1.60	1.29
1:X:71:ILE:HD12	1:X:71:ILE:C	1.49	1.23
1:X:46:ARG:HD2	1:X:52:LEU:CD1	1.70	1.21
1:X:71:ILE:HD12	1:X:71:ILE:O	1.39	1.18
1:X:74:MSE:HE1	1:X:85:GLN:HG2	1.14	1.12
1:X:74:MSE:HE2	1:X:85:GLN:HG2	1.47	0.96
1:X:71:ILE:C	1:X:71:ILE:CD1	2.30	0.96
1:X:68:GLY:HA2	1:X:72:TYR:HB2	1.47	0.95
1:X:46:ARG:HD2	1:X:52:LEU:HD11	0.96	0.94
1:X:74:MSE:CE	1:X:85:GLN:CG	2.50	0.88
1:X:74:MSE:HE1	1:X:85:GLN:CG	2.04	0.86
1:X:46:ARG:HD3	1:X:52:LEU:HD11	1.61	0.80
1:X:46:ARG:HD2	1:X:52:LEU:CG	2.11	0.80
1:X:71:ILE:O	1:X:71:ILE:CD1	2.30	0.76
1:X:68:GLY:H	1:X:72:TYR:HD2	1.32	0.74
1:X:68:GLY:N	1:X:72:TYR:HD2	1.89	0.71
1:X:46:ARG:HB3	1:X:52:LEU:HD21	1.71	0.71
1:X:71:ILE:HD11	1:X:75:LEU:HG	1.73	0.70
1:X:113:ARG:HB2	1:X:124:GLN:HE22	1.57	0.70
1:X:74:MSE:HE2	1:X:85:GLN:CG	2.18	0.68
1:X:113:ARG:HH11	1:X:124:GLN:NE2	1.91	0.68
1:X:67:GLU:H	1:X:69:GLN:NE2	1.99	0.60
1:X:32:GLU:HB3	1:X:39:VAL:HG21	1.84	0.60
1:X:46:ARG:CB	1:X:52:LEU:HD21	2.34	0.58
1:X:71:ILE:CD1	1:X:75:LEU:HG	2.33	0.57
1:X:46:ARG:CG	1:X:52:LEU:HD21	2.36	0.56
1:X:87:GLY:HA3	1:X:108:PHE:CE2	2.41	0.55
1:X:62:VAL:C	1:X:64:PRO:HD3	2.28	0.54
1:X:46:ARG:HD2	1:X:52:LEU:CD2	2.38	0.54
1:X:69:GLN:HG2	1:X:69:GLN:O	2.08	0.53
1:X:110:VAL:HG22	1:X:125:LEU:HG	1.91	0.53
1:X:71:ILE:O	1:X:74:MSE:HG3	2.07	0.53
1:X:46:ARG:HD2	1:X:52:LEU:HD21	1.91	0.52
1:X:63:TYR:O	1:X:72:TYR:OH	2.25	0.52
1:X:62:VAL:HG22	1:X:63:TYR:CD2	2.46	0.50
1:X:67:GLU:H	1:X:69:GLN:HE22	1.61	0.48
1:X:91:ARG:HA	1:X:104:ARG:O	2.15	0.47
1:X:74:MSE:HE2	1:X:85:GLN:CD	2.35	0.47
1:X:13:ALA:O	1:X:17:VAL:HG23	2.15	0.46
1:X:87:GLY:HA3	1:X:108:PHE:CZ	2.50	0.46
1:X:69:GLN:NE2	1:X:69:GLN:O	2.49	0.46

*Continued on next page...*

*Continued from previous page...*

Atom-1	Atom-2	Interatomic distance (Å)	Clash overlap (Å)
1:X:66:LEU:HA	1:X:69:GLN:HE22	1.81	0.46
1:X:63:TYR:N	1:X:64:PRO:HD3	2.31	0.46
1:X:29:VAL:HG22	1:X:45:TYR:CD1	2.51	0.45
1:X:48:PHE:CD2	1:X:48:PHE:C	2.90	0.45
1:X:69:GLN:O	1:X:69:GLN:CG	2.64	0.44
1:X:113:ARG:HH11	1:X:124:GLN:HE22	1.65	0.44
1:X:46:ARG:CD	1:X:52:LEU:HD21	2.48	0.43
1:X:71:ILE:HD11	1:X:75:LEU:CG	2.48	0.43
1:X:67:GLU:H	1:X:69:GLN:CD	2.22	0.42

There are no symmetry-related clashes.

## 5.3 Torsion angles [i](#)

### 5.3.1 Protein backbone [i](#)

In the following table, the Percentiles column shows the percent Ramachandran outliers of the chain as a percentile score with respect to all X-ray entries followed by that with respect to entries of similar resolution.

The Analysed column shows the number of residues for which the backbone conformation was analysed, and the total number of residues.

Mol	Chain	Analysed	Favoured	Allowed	Outliers	Percentiles
1	X	123/185 (66%)	117 (95%)	5 (4%)	1 (1%)	16 20

All (1) Ramachandran outliers are listed below:

Mol	Chain	Res	Type
1	X	68	GLY

### 5.3.2 Protein sidechains [i](#)

In the following table, the Percentiles column shows the percent sidechain outliers of the chain as a percentile score with respect to all X-ray entries followed by that with respect to entries of similar resolution.

The Analysed column shows the number of residues for which the sidechain conformation was analysed, and the total number of residues.

Mol	Chain	Analysed	Rotameric	Outliers	Percentiles
1	X	100/149 (67%)	86 (86%)	14 (14%)	<b>3</b> <b>3</b>

All (14) residues with a non-rotameric sidechain are listed below:

Mol	Chain	Res	Type
1	X	11	VAL
1	X	28	LEU
1	X	32	GLU
1	X	48	PHE
1	X	53	ASP
1	X	65	GLU
1	X	67	GLU
1	X	69	GLN
1	X	71	ILE
1	X	77	ARG
1	X	85	GLN
1	X	124	GLN
1	X	135	ARG
1	X	137	ARG

Sometimes sidechains can be flipped to improve hydrogen bonding and reduce clashes. All (3) such sidechains are listed below:

Mol	Chain	Res	Type
1	X	57	GLN
1	X	85	GLN
1	X	124	GLN

### 5.3.3 RNA ⓘ

There are no RNA molecules in this entry.

## 5.4 Non-standard residues in protein, DNA, RNA chains ⓘ

There are no non-standard protein/DNA/RNA residues in this entry.

## 5.5 Carbohydrates ⓘ

There are no oligosaccharides in this entry.

## 5.6 Ligand geometry

1 ligand is modelled in this entry.

In the following table, the Counts columns list the number of bonds (or angles) for which Mogul statistics could be retrieved, the number of bonds (or angles) that are observed in the model and the number of bonds (or angles) that are defined in the Chemical Component Dictionary. The Link column lists molecule types, if any, to which the group is linked. The Z score for a bond length (or angle) is the number of standard deviations the observed value is removed from the expected value. A bond length (or angle) with  $|Z| > 2$  is considered an outlier worth inspection. RMSZ is the root-mean-square of all Z scores of the bond lengths (or angles).

Mol	Type	Chain	Res	Link	Bond lengths			Bond angles		
					Counts	RMSZ	$\# Z  > 2$	Counts	RMSZ	$\# Z  > 2$
2	IPA	X	164	-	3,3,3	0.48	0	3,3,3	0.41	0

There are no bond length outliers.

There are no bond angle outliers.

There are no chirality outliers.

There are no torsion outliers.

There are no ring outliers.

No monomer is involved in short contacts.

## 5.7 Other polymers

There are no such residues in this entry.

## 5.8 Polymer linkage issues

There are no chain breaks in this entry.

## 6 Fit of model and data ⓘ

### 6.1 Protein, DNA and RNA chains ⓘ

In the following table, the column labelled ‘#RSRZ> 2’ contains the number (and percentage) of RSRZ outliers, followed by percent RSRZ outliers for the chain as percentile scores relative to all X-ray entries and entries of similar resolution. The OWAB column contains the minimum, median, 95<sup>th</sup> percentile and maximum values of the occupancy-weighted average B-factor per residue. The column labelled ‘Q< 0.9’ lists the number of (and percentage) of residues with an average occupancy less than 0.9.

Mol	Chain	Analysed	<RSRZ>	#RSRZ>2	OWAB(Å <sup>2</sup> )	Q<0.9
1	X	125/185 (67%)	0.82	26 (20%) 3 4	28, 46, 112, 134	0

All (26) RSRZ outliers are listed below:

Mol	Chain	Res	Type	RSRZ
1	X	138	GLN	6.4
1	X	52	LEU	6.1
1	X	51	LEU	5.8
1	X	93	GLN	5.3
1	X	66	LEU	4.9
1	X	71	ILE	4.8
1	X	68	GLY	4.0
1	X	102	GLU	3.9
1	X	72	TYR	3.7
1	X	48	PHE	3.7
1	X	32	GLU	3.4
1	X	137	ARG	3.4
1	X	67	GLU	2.9
1	X	69	GLN	2.9
1	X	50	PRO	2.8
1	X	90	TRP	2.7
1	X	103	GLU	2.7
1	X	136	ALA	2.7
1	X	135	ARG	2.6
1	X	65	GLU	2.6
1	X	70	GLN	2.6
1	X	54	THR	2.5
1	X	64	PRO	2.5
1	X	4	GLU	2.3
1	X	92	LEU	2.3
1	X	109	VAL	2.1

## 6.2 Non-standard residues in protein, DNA, RNA chains [i](#)

There are no non-standard protein/DNA/RNA residues in this entry.

## 6.3 Carbohydrates [i](#)

There are no monosaccharides in this entry.

## 6.4 Ligands [i](#)

In the following table, the Atoms column lists the number of modelled atoms in the group and the number defined in the chemical component dictionary. The B-factors column lists the minimum, median, 95<sup>th</sup> percentile and maximum values of B factors of atoms in the group. The column labelled 'Q< 0.9' lists the number of atoms with occupancy less than 0.9.

Mol	Type	Chain	Res	Atoms	RSCC	RSR	B-factors( $\text{\AA}^2$ )	Q<0.9
2	IPA	X	164	4/4	0.50	0.38	63,70,70,72	0

## 6.5 Other polymers [i](#)

There are no such residues in this entry.