



Full wwPDB X-ray Structure Validation Report ⓘ

Mar 24, 2025 – 02:13 PM JST

PDB ID : 9KSK
Title : Crystal structure of SARS-CoV-2 main protease in complex with compound 10
Authors : Zhong, Y.; Zhao, L.; Zhang, W.; Peng, W.
Deposited on : 2024-11-29
Resolution : 2.45 Å(reported)

This is a Full wwPDB X-ray Structure Validation Report for a publicly released PDB entry.

We welcome your comments at validation@mail.wwpdb.org

A user guide is available at

<https://www.wwpdb.org/validation/2017/XrayValidationReportHelp>

with specific help available everywhere you see the ⓘ symbol.

The types of validation reports are described at

<http://www.wwpdb.org/validation/2017/FAQs#types>.

The following versions of software and data (see [references ⓘ](#)) were used in the production of this report:

MolProbity	:	4.02b-467
Mogul	:	1.8.5 (274361), CSD as541be (2020)
Xtriage (Phenix)	:	1.21
EDS	:	3.0
buster-report	:	1.1.7 (2018)
Percentile statistics	:	20231227.v01 (using entries in the PDB archive December 27th 2023)
CCP4	:	9.0.004 (Gargrove)
Density-Fitness	:	1.0.11
Ideal geometry (proteins)	:	Engh & Huber (2001)
Ideal geometry (DNA, RNA)	:	Parkinson et al. (1996)
Validation Pipeline (wwPDB-VP)	:	2.41.2

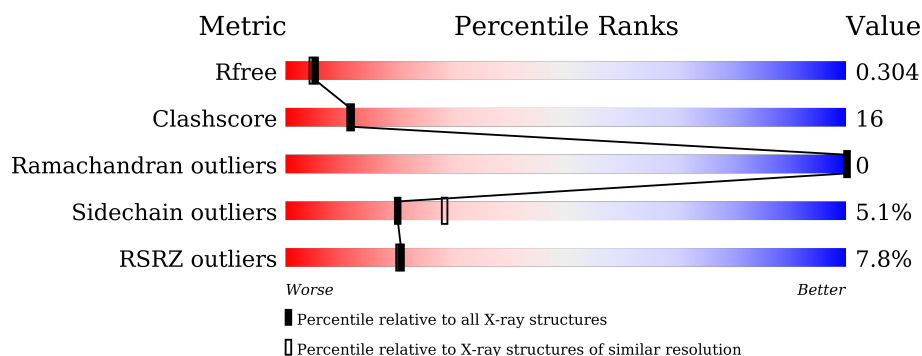
1 Overall quality at a glance

The following experimental techniques were used to determine the structure:

X-RAY DIFFRACTION

The reported resolution of this entry is 2.45 Å.

Percentile scores (ranging between 0-100) for global validation metrics of the entry are shown in the following graphic. The table shows the number of entries on which the scores are based.



Metric	Whole archive (#Entries)	Similar resolution (#Entries, resolution range(Å))
R_{free}	164625	1096 (2.46-2.46)
Clashscore	180529	1178 (2.46-2.46)
Ramachandran outliers	177936	1170 (2.46-2.46)
Sidechain outliers	177891	1170 (2.46-2.46)
RSRZ outliers	164620	1096 (2.46-2.46)

The table below summarises the geometric issues observed across the polymeric chains and their fit to the electron density. The red, orange, yellow and green segments of the lower bar indicate the fraction of residues that contain outliers for ≥ 3 , 2, 1 and 0 types of geometric quality criteria respectively. A grey segment represents the fraction of residues that are not modelled. The numeric value for each fraction is indicated below the corresponding segment, with a dot representing fractions $\leq 5\%$. The upper red bar (where present) indicates the fraction of residues that have poor fit to the electron density. The numeric value is given above the bar.

Mol	Chain	Length	Quality of chain
1	A	301	<div> <div>8%</div> <div>69%</div> <div>29%</div> <div>.</div> </div>
1	B	301	<div> <div>8%</div> <div>69%</div> <div>29%</div> <div>.</div> </div>

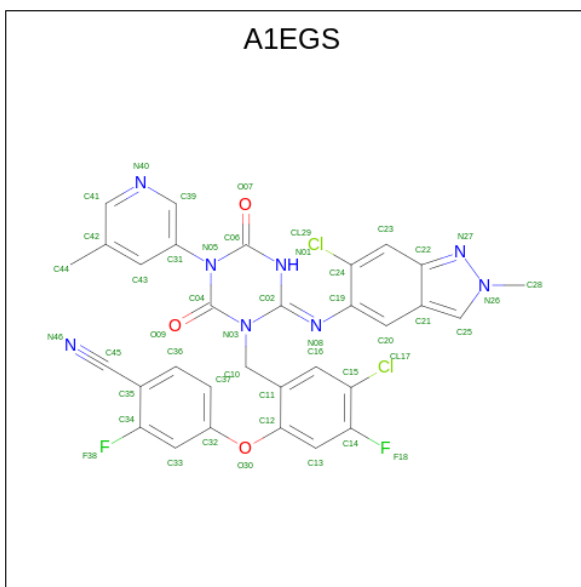
i

In the tables below, the ZeroOcc column contains the number of atoms modelled with zero occupancy, the AltConf column contains the number of residues with at least one atom in alternate conformation and the Trace column contains the number of residues modelled with at most 2 atoms.

- Molecule 1 is a protein called 3C-like proteinase.

Mol	Chain	Residues	Atoms					ZeroOcc	AltConf	Trace
1	A	300	Total 2320	C 1469	N 393	O 435	S 23	0	1	0
1	B	301	Total 2326	C 1472	N 394	O 437	S 23	0	1	0

- Molecule 2 is 4-[4-chloranyl-2-[[[(6E)-6-(6-chloranyl-2-methyl-indazol-5-yl)imino-3-(5-methylpyridin-3-yl)-2,4-bis(oxidanylidene)-1,3,5-triazinan-1-yl]methyl]-5-fluoranyl-phenoxy]-2-fluoranyl-benzenecarbonitrile (three-letter code: A1EGS) (formula: C₃₁H₂₀Cl₂F₂N₈O₃) (labeled as "Ligand of Interest" by depositor).



Mol	Chain	Residues	Atoms							ZeroOcc	AltConf
2	A	1	Total 68	C 31	Cl 2	F 2	H 22	N 8	O 3	0	0
2	B	1	Total 68	C 31	Cl 2	F 2	H 22	N 8	O 3	0	0

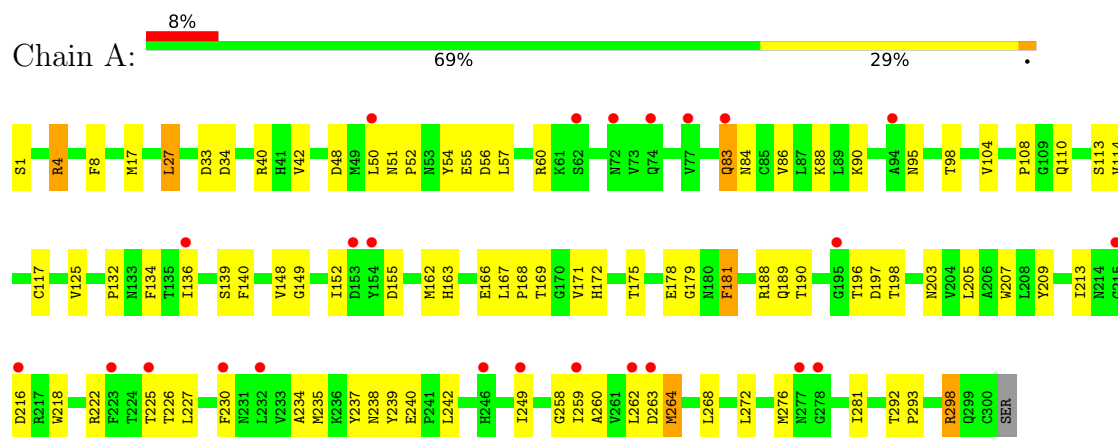
- Molecule 3 is water.

Mol	Chain	Residues	Atoms		ZeroOcc	AltConf
3	A	87	Total 87	O 87	0	0
3	B	80	Total 80	O 80	0	0

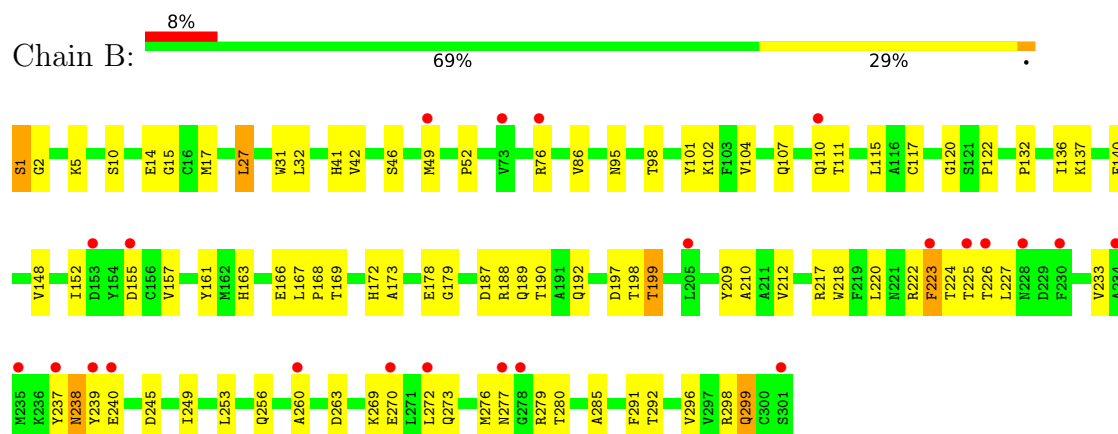
3 Residue-property plots [i](#)

These plots are drawn for all protein, RNA, DNA and oligosaccharide chains in the entry. The first graphic for a chain summarises the proportions of the various outlier classes displayed in the second graphic. The second graphic shows the sequence view annotated by issues in geometry and electron density. Residues are color-coded according to the number of geometric quality criteria for which they contain at least one outlier: green = 0, yellow = 1, orange = 2 and red = 3 or more. A red dot above a residue indicates a poor fit to the electron density ($RSRZ > 2$). Stretches of 2 or more consecutive residues without any outlier are shown as a green connector. Residues present in the sample, but not in the model, are shown in grey.

• Molecule 1: 3C-like proteinase



• Molecule 1: 3C-like proteinase



4 Data and refinement statistics

Property	Value	Source
Space group	P 1 21 1	Depositor
Cell constants a, b, c, α , β , γ	51.56Å 83.39Å 88.09Å 90.00° 96.64° 90.00°	Depositor
Resolution (Å)	20.12 – 2.45 20.12 – 2.45	Depositor EDS
% Data completeness (in resolution range)	97.6 (20.12-2.45) 97.3 (20.12-2.45)	Depositor EDS
R_{merge}	(Not available)	Depositor
R_{sym}	(Not available)	Depositor
$\langle I/\sigma(I) \rangle$ ¹	1.94 (at 2.44Å)	Xtriage
Refinement program	PHENIX (1.20.1_4487: ???)	Depositor
R, R_{free}	0.252 , 0.307 0.253 , 0.304	Depositor DCC
R_{free} test set	1376 reflections (5.03%)	wwPDB-VP
Wilson B-factor (Å ²)	20.8	Xtriage
Anisotropy	1.296	Xtriage
Bulk solvent k_{sol} (e/Å ³), B_{sol} (Å ²)	0.35 , 47.7	EDS
L-test for twinning ²	$\langle L \rangle = 0.52$, $\langle L^2 \rangle = 0.36$	Xtriage
Estimated twinning fraction	No twinning to report.	Xtriage
F_o, F_c correlation	0.90	EDS
Total number of atoms	4949	wwPDB-VP
Average B, all atoms (Å ²)	29.0	wwPDB-VP

Xtriage's analysis on translational NCS is as follows: *The analyses of the Patterson function reveals a significant off-origin peak that is 66.38 % of the origin peak, indicating pseudo-translational symmetry. The chance of finding a peak of this or larger height randomly in a structure without pseudo-translational symmetry is equal to 6.0981e-06. The detected translational NCS is most likely also responsible for the elevated intensity ratio.*

¹Intensities estimated from amplitudes.

²Theoretical values of $\langle |L| \rangle$, $\langle L^2 \rangle$ for acentric reflections are 0.5, 0.333 respectively for untwinned datasets, and 0.375, 0.2 for perfectly twinned datasets.

5 Model quality

5.1 Standard geometry

Bond lengths and bond angles in the following residue types are not validated in this section: A1EGS

The Z score for a bond length (or angle) is the number of standard deviations the observed value is removed from the expected value. A bond length (or angle) with $|Z| > 5$ is considered an outlier worth inspection. RMSZ is the root-mean-square of all Z scores of the bond lengths (or angles).

Mol	Chain	Bond lengths		Bond angles	
		RMSZ	$\# Z > 5$	RMSZ	$\# Z > 5$
1	A	0.37	0/2375	0.58	0/3228
1	B	0.42	0/2381	0.61	0/3236
All	All	0.40	0/4756	0.60	0/6464

There are no bond length outliers.

There are no bond angle outliers.

There are no chirality outliers.

There are no planarity outliers.

5.2 Too-close contacts

In the following table, the Non-H and H(model) columns list the number of non-hydrogen atoms and hydrogen atoms in the chain respectively. The H(added) column lists the number of hydrogen atoms added and optimized by MolProbity. The Clashes column lists the number of clashes within the asymmetric unit, whereas Symm-Clashes lists symmetry-related clashes.

Mol	Chain	Non-H	H(model)	H(added)	Clashes	Symm-Clashes
1	A	2320	0	2264	73	3
1	B	2326	0	2269	75	3
2	A	46	22	0	4	0
2	B	46	22	0	4	0
3	A	87	0	0	6	0
3	B	80	0	0	10	0
All	All	4905	44	4533	146	3

The all-atom clashscore is defined as the number of clashes found per 1000 atoms (including hydrogen atoms). The all-atom clashscore for this structure is 16.

All (146) close contacts within the same asymmetric unit are listed below, sorted by their clash

magnitude.

Atom-1	Atom-2	Interatomic distance (Å)	Clash overlap (Å)
1:B:233:VAL:HG21	1:B:269:LYS:HE2	1.49	0.91
1:A:86:VAL:HG22	1:A:162:MET:CE	2.08	0.84
1:A:52:PRO:HD2	1:A:188:ARG:HG3	1.63	0.79
1:A:209:TYR:O	1:A:213:ILE:HG13	1.83	0.79
1:B:233:VAL:HG21	1:B:269:LYS:CE	2.12	0.78
1:A:56:ASP:O	1:A:60:ARG:HD2	1.83	0.78
1:B:276:MET:SD	3:B:574:HOH:O	2.42	0.76
1:A:86:VAL:HG22	1:A:162:MET:HE1	1.65	0.76
1:A:17:MET:HG3	1:A:117[A]:CYS:SG	2.27	0.75
1:A:84:ASN:OD1	1:B:104:VAL:HG22	1.88	0.74
1:A:167:LEU:HD12	1:A:171:VAL:HG23	1.72	0.70
1:A:27:LEU:HD21	1:A:42:VAL:HB	1.74	0.70
1:B:41:HIS:NE2	1:B:49:MET:HG2	2.08	0.69
1:B:224:THR:HA	3:B:503:HOH:O	1.93	0.67
1:B:199:THR:O	1:B:240:GLU:HG3	1.97	0.64
1:A:230:PHE:HZ	1:A:268:LEU:HD23	1.61	0.64
1:B:31:TRP:CD2	1:B:95:ASN:HB2	2.34	0.63
1:A:238:ASN:HB3	3:A:551:HOH:O	1.97	0.63
1:A:34:ASP:OD2	1:A:90:LYS:NZ	2.32	0.62
1:B:31:TRP:CE2	1:B:95:ASN:HB2	2.35	0.62
1:B:276:MET:CE	1:B:285:ALA:HA	2.30	0.62
1:A:175:THR:HG22	1:A:181:PHE:HA	1.82	0.61
1:B:132:PRO:HG2	1:B:198:THR:HG23	1.81	0.61
1:B:249:ILE:H	1:B:249:ILE:HD12	1.65	0.61
1:B:263:ASP:HA	3:B:503:HOH:O	1.99	0.61
1:B:115:LEU:HD11	1:B:122:PRO:HB3	1.81	0.61
1:B:107:GLN:HB2	1:B:110:GLN:OE1	2.00	0.61
1:B:209:TYR:O	1:B:212:VAL:HG22	2.00	0.61
1:A:86:VAL:HG23	1:A:179:GLY:HA2	1.83	0.60
1:B:27:LEU:HD21	1:B:42:VAL:HB	1.82	0.60
1:B:52:PRO:HD2	1:B:188:ARG:HG3	1.82	0.60
1:B:210:ALA:HB2	1:B:296:VAL:HG13	1.83	0.59
1:B:238:ASN:O	1:B:238:ASN:ND2	2.36	0.59
1:B:245:ASP:O	1:B:249:ILE:HD12	2.03	0.59
1:B:189:GLN:HA	2:B:401:A1EGS:C32	2.33	0.58
1:B:169:THR:HA	3:B:542:HOH:O	2.03	0.58
1:A:50:LEU:O	1:A:188:ARG:HG2	2.04	0.58
1:B:168:PRO:HD3	2:B:401:A1EGS:N46	2.20	0.57
1:A:83:GLN:OE1	1:A:88:LYS:HE2	2.04	0.57
1:B:189:GLN:HG3	2:B:401:A1EGS:O30	2.05	0.57
1:A:234:ALA:HB1	1:A:239:TYR:HB2	1.87	0.56

Continued on next page...

Continued from previous page...

Atom-1	Atom-2	Interatomic distance (Å)	Clash overlap (Å)
1:B:269:LYS:O	1:B:273:GLN:HG3	2.06	0.55
1:B:260:ALA:HB3	1:B:263:ASP:CG	2.26	0.55
1:A:230:PHE:CZ	1:A:268:LEU:HD23	2.40	0.55
1:B:227:LEU:O	1:B:227:LEU:HG	2.06	0.55
1:B:276:MET:HE1	1:B:280:THR:HA	1.89	0.55
1:A:148:VAL:N	3:A:509:HOH:O	2.34	0.54
1:B:132:PRO:HB2	1:B:198:THR:HG22	1.89	0.54
1:B:238:ASN:C	1:B:238:ASN:HD22	2.10	0.54
1:A:33:ASP:OD1	1:A:98:THR:HG21	2.06	0.54
1:B:148:VAL:HA	1:B:161:TYR:O	2.08	0.54
1:B:52:PRO:CD	1:B:188:ARG:HG3	2.38	0.53
1:B:249:ILE:HD12	1:B:249:ILE:N	2.23	0.53
1:A:207:TRP:CH2	1:A:281:ILE:HB	2.43	0.53
1:A:50:LEU:C	1:A:50:LEU:HD13	2.28	0.53
1:A:86:VAL:HG22	1:A:162:MET:HE2	1.91	0.53
1:B:187:ASP:OD1	1:B:187:ASP:N	2.42	0.53
1:B:1:SER:OG	1:B:2:GLY:N	2.42	0.52
1:A:225:THR:O	1:A:262:LEU:HD13	2.09	0.52
1:A:167:LEU:HD12	1:A:171:VAL:CG2	2.38	0.52
1:B:137:LYS:HD2	3:B:509:HOH:O	2.09	0.52
1:A:178:GLU:HG2	1:B:178:GLU:OE2	2.10	0.52
1:B:41:HIS:CE1	1:B:49:MET:HG2	2.45	0.52
1:A:83:GLN:HB2	1:A:88:LYS:HE3	1.93	0.51
1:A:108:PRO:HG3	1:A:134:PHE:CE1	2.46	0.51
1:A:50:LEU:HD13	1:A:51:ASN:HB2	1.93	0.51
1:A:168:PRO:HD3	2:A:401:A1EGS:N46	2.26	0.51
1:A:198:THR:HG23	1:A:240:GLU:HG3	1.93	0.50
1:B:46:SER:N	3:B:501:HOH:O	2.25	0.50
1:B:117[A]:CYS:SG	1:B:122:PRO:HA	2.50	0.50
1:A:113:SER:O	1:A:149:GLY:HA2	2.13	0.49
1:B:163:HIS:CE1	1:B:172:HIS:HB3	2.48	0.49
1:A:95:ASN:HB3	1:A:98:THR:OG1	2.13	0.48
1:B:152:ILE:HG12	1:B:157:VAL:HG22	1.96	0.48
1:A:239:TYR:CE1	1:A:272:LEU:HD21	2.48	0.48
1:B:222:ARG:HH12	1:B:223:PHE:HE1	1.61	0.48
1:B:253:LEU:HG	3:B:519:HOH:O	2.12	0.48
1:A:148:VAL:HG22	3:A:509:HOH:O	2.13	0.47
1:B:217:ARG:CB	1:B:220:LEU:HD12	2.45	0.47
1:B:276:MET:HE1	1:B:285:ALA:HA	1.96	0.47
1:A:249:ILE:CG2	1:A:293:PRO:HG2	2.45	0.47
1:A:189:GLN:HG3	2:A:401:A1EGS:O30	2.15	0.47

Continued on next page...

Continued from previous page...

Atom-1	Atom-2	Interatomic distance (Å)	Clash overlap (Å)
1:B:31:TRP:O	1:B:32:LEU:HD23	2.15	0.47
1:A:40:ARG:HG3	1:A:54:TYR:CE1	2.50	0.47
1:B:102:LYS:HB2	1:B:102:LYS:HE2	1.74	0.47
1:A:110:GLN:HB3	3:A:555:HOH:O	2.14	0.47
1:A:132:PRO:HG2	1:A:198:THR:O	2.15	0.47
1:B:239:TYR:CZ	1:B:272:LEU:HD21	2.50	0.46
1:A:203:ASN:OD1	1:A:292:THR:HA	2.14	0.46
1:A:216:ASP:OD1	1:A:218:TRP:HD1	1.99	0.46
1:B:111:THR:HG23	1:B:292:THR:HG23	1.96	0.46
1:A:50:LEU:CD1	1:A:51:ASN:HB2	2.45	0.46
1:A:52:PRO:CD	1:A:188:ARG:HG3	2.39	0.46
1:B:163:HIS:HE1	1:B:172:HIS:HB3	1.81	0.46
1:A:167:LEU:HB3	1:A:168:PRO:CD	2.46	0.46
1:B:95:ASN:HB3	1:B:98:THR:OG1	2.15	0.46
1:B:167:LEU:HB3	1:B:168:PRO:CD	2.46	0.46
1:B:245:ASP:O	1:B:249:ILE:CD1	2.64	0.46
1:A:227:LEU:HD21	1:A:242:LEU:O	2.16	0.45
1:A:249:ILE:HG21	1:A:293:PRO:HG2	1.98	0.45
1:A:132:PRO:HD2	1:A:197:ASP:OD1	2.16	0.45
1:B:17:MET:HG3	1:B:117[A]:CYS:SG	2.56	0.45
1:A:8:PHE:HB3	1:A:152:ILE:HD12	1.99	0.45
1:A:225:THR:O	1:A:262:LEU:HD22	2.16	0.45
1:A:258:GLY:C	1:A:259:ILE:HD12	2.37	0.45
1:A:234:ALA:HB1	1:A:239:TYR:CB	2.46	0.45
1:B:10:SER:O	1:B:14:GLU:HG3	2.16	0.45
1:A:234:ALA:O	1:A:237:TYR:N	2.45	0.45
1:B:260:ALA:HB3	1:B:263:ASP:OD2	2.16	0.45
1:A:175:THR:HG22	1:A:181:PHE:CA	2.44	0.45
1:B:136:ILE:HG13	1:B:136:ILE:O	2.16	0.45
1:B:233:VAL:O	1:B:237:TYR:HD1	2.00	0.45
1:B:132:PRO:HD2	1:B:197:ASP:OD1	2.17	0.45
1:B:217:ARG:HB3	1:B:220:LEU:HD12	1.99	0.44
1:B:225:THR:HG22	1:B:226:THR:O	2.18	0.44
1:A:239:TYR:CZ	1:A:272:LEU:HD21	2.52	0.44
1:B:166:GLU:HB2	2:B:401:A1EGS:C41	2.48	0.43
1:A:163:HIS:CE1	1:A:172:HIS:HB3	2.53	0.43
1:A:163:HIS:NE2	2:A:401:A1EGS:N40	2.66	0.43
1:A:169:THR:OG1	1:A:171:VAL:HG22	2.18	0.43
1:A:259:ILE:HD12	1:A:259:ILE:N	2.34	0.43
1:B:15:GLY:HA3	3:B:517:HOH:O	2.18	0.43
1:A:198:THR:CG2	1:A:240:GLU:HG3	2.50	0.42

Continued on next page...

Continued from previous page...

Atom-1	Atom-2	Interatomic distance (Å)	Clash overlap (Å)
1:A:189:GLN:HA	2:A:401:A1EGS:C32	2.49	0.42
1:A:166:GLU:OE1	1:A:172:HIS:NE2	2.49	0.42
1:A:298:ARG:NH2	3:A:517:HOH:O	2.52	0.42
1:A:114:VAL:O	1:A:125:VAL:HA	2.20	0.42
1:A:276:MET:N	3:A:508:HOH:O	2.34	0.42
1:A:205:LEU:HD22	1:A:264:MET:HB3	2.01	0.41
1:A:262:LEU:HA	1:A:262:LEU:HD23	1.81	0.41
1:B:173:ALA:HA	3:B:525:HOH:O	2.20	0.41
1:A:237:TYR:CB	1:A:272:LEU:HD22	2.50	0.41
1:A:237:TYR:HB3	1:A:272:LEU:HD22	2.01	0.41
1:B:167:LEU:HB3	1:B:168:PRO:HD2	2.03	0.41
1:B:217:ARG:HG2	1:B:220:LEU:CD1	2.51	0.41
1:B:190:THR:O	1:B:192:GLN:HG3	2.21	0.41
1:B:218:TRP:CE3	1:B:279:ARG:HD2	2.56	0.41
1:B:101:TYR:HA	1:B:157:VAL:O	2.21	0.41
1:A:86:VAL:HG23	1:A:179:GLY:CA	2.47	0.41
1:A:260:ALA:O	1:A:263:ASP:HB2	2.21	0.40
1:A:136:ILE:HD11	1:A:140:PHE:HE2	1.86	0.40
1:B:86:VAL:HG23	1:B:179:GLY:HA2	2.03	0.40
1:B:233:VAL:HG13	1:B:237:TYR:HE1	1.85	0.40
1:B:5:LYS:HG2	1:B:291:PHE:CZ	2.57	0.40
1:A:48:ASP:HB3	1:A:57:LEU:HD11	2.02	0.40
1:B:120:GLY:HA3	3:B:554:HOH:O	2.22	0.40

All (3) symmetry-related close contacts are listed below. The label for Atom-2 includes the symmetry operator and encoded unit-cell translations to be applied.

Atom-1	Atom-2	Interatomic distance (Å)	Clash overlap (Å)
1:A:4:ARG:NH1	1:B:137:LYS:O[1_655]	2.13	0.07
1:A:1:SER:N	1:B:140:PHE:O[1_655]	2.18	0.02
1:A:139:SER:OG	1:B:299:GLN:OE1[1_655]	2.19	0.01

5.3 Torsion angles

5.3.1 Protein backbone

In the following table, the Percentiles column shows the percent Ramachandran outliers of the chain as a percentile score with respect to all X-ray entries followed by that with respect to entries of similar resolution.

The Analysed column shows the number of residues for which the backbone conformation was analysed, and the total number of residues.

Mol	Chain	Analysed	Favoured	Allowed	Outliers	Percentiles	
1	A	299/301 (99%)	293 (98%)	6 (2%)	0	100	100
1	B	300/301 (100%)	294 (98%)	6 (2%)	0	100	100
All	All	599/602 (100%)	587 (98%)	12 (2%)	0	100	100

There are no Ramachandran outliers to report.

5.3.2 Protein sidechains ⓘ

In the following table, the Percentiles column shows the percent sidechain outliers of the chain as a percentile score with respect to all X-ray entries followed by that with respect to entries of similar resolution.

The Analysed column shows the number of residues for which the sidechain conformation was analysed, and the total number of residues.

Mol	Chain	Analysed	Rotameric	Outliers	Percentiles	
1	A	257/259 (99%)	243 (95%)	14 (5%)	18	26
1	B	258/259 (100%)	246 (95%)	12 (5%)	22	32
All	All	515/518 (99%)	489 (95%)	26 (5%)	20	29

All (26) residues with a non-rotameric sidechain are listed below:

Mol	Chain	Res	Type
1	A	4	ARG
1	A	27	LEU
1	A	55	GLU
1	A	83	GLN
1	A	104	VAL
1	A	155	ASP
1	A	181	PHE
1	A	190	THR
1	A	196	THR
1	A	222	ARG
1	A	226	THR
1	A	235	MET
1	A	264	MET
1	A	298	ARG
1	B	1	SER

Continued on next page...

Continued from previous page...

Mol	Chain	Res	Type
1	B	27	LEU
1	B	76	ARG
1	B	155	ASP
1	B	199	THR
1	B	223	PHE
1	B	238	ASN
1	B	256	GLN
1	B	270	GLU
1	B	277	ASN
1	B	298	ARG
1	B	299	GLN

Sometimes sidechains can be flipped to improve hydrogen bonding and reduce clashes. All (1) such sidechains are listed below:

Mol	Chain	Res	Type
1	B	238	ASN

5.3.3 RNA [i](#)

There are no RNA molecules in this entry.

5.4 Non-standard residues in protein, DNA, RNA chains [i](#)

There are no non-standard protein/DNA/RNA residues in this entry.

5.5 Carbohydrates [i](#)

There are no oligosaccharides in this entry.

5.6 Ligand geometry [i](#)

2 ligands are modelled in this entry.

In the following table, the Counts columns list the number of bonds (or angles) for which Mogul statistics could be retrieved, the number of bonds (or angles) that are observed in the model and the number of bonds (or angles) that are defined in the Chemical Component Dictionary. The Link column lists molecule types, if any, to which the group is linked. The Z score for a bond length (or angle) is the number of standard deviations the observed value is removed from the expected value. A bond length (or angle) with $|Z| > 2$ is considered an outlier worth inspection. RMSZ is the root-mean-square of all Z scores of the bond lengths (or angles).

Mol	Type	Chain	Res	Link	Bond lengths			Bond angles		
					Counts	RMSZ	# Z > 2	Counts	RMSZ	# Z > 2
2	A1EGS	A	401	-	48,51,51	3.05	11 (22%)	64,75,75	1.55	12 (18%)
2	A1EGS	B	401	-	48,51,51	3.12	12 (25%)	64,75,75	1.39	8 (12%)

In the following table, the Chirals column lists the number of chiral outliers, the number of chiral centers analysed, the number of these observed in the model and the number defined in the Chemical Component Dictionary. Similar counts are reported in the Torsion and Rings columns. '-' means no outliers of that kind were identified.

Mol	Type	Chain	Res	Link	Chirals	Torsions	Rings
2	A1EGS	A	401	-	-	1/17/18/18	0/6/6/6
2	A1EGS	B	401	-	-	1/17/18/18	0/6/6/6

All (23) bond length outliers are listed below:

Mol	Chain	Res	Type	Atoms	Z	Observed(Å)	Ideal(Å)
2	B	401	A1EGS	O09-C04	9.74	1.40	1.22
2	A	401	A1EGS	O09-C04	9.58	1.40	1.22
2	B	401	A1EGS	O07-C06	9.47	1.40	1.23
2	B	401	A1EGS	C02-N03	-9.03	1.32	1.39
2	A	401	A1EGS	O07-C06	8.97	1.39	1.23
2	B	401	A1EGS	C02-N08	8.25	1.44	1.28
2	A	401	A1EGS	C02-N03	-8.22	1.32	1.39
2	A	401	A1EGS	C02-N08	8.03	1.43	1.28
2	B	401	A1EGS	C35-C45	6.03	1.53	1.44
2	A	401	A1EGS	C35-C45	6.03	1.53	1.44
2	A	401	A1EGS	C25-N26	-3.95	1.31	1.35
2	A	401	A1EGS	C06-N05	-3.93	1.31	1.39
2	A	401	A1EGS	C04-N05	-3.89	1.32	1.40
2	B	401	A1EGS	C25-N26	-3.81	1.31	1.35
2	B	401	A1EGS	C04-N05	-3.74	1.32	1.40
2	A	401	A1EGS	C06-N01	-3.52	1.31	1.38
2	A	401	A1EGS	C04-N03	-3.43	1.32	1.38
2	B	401	A1EGS	C04-N03	-3.40	1.32	1.38
2	B	401	A1EGS	C06-N05	-3.39	1.32	1.39
2	B	401	A1EGS	C06-N01	-3.26	1.32	1.38
2	A	401	A1EGS	C15-CL17	2.51	1.79	1.73
2	B	401	A1EGS	C15-CL17	2.10	1.78	1.73
2	B	401	A1EGS	C25-C21	2.00	1.45	1.40

All (20) bond angle outliers are listed below:

Mol	Chain	Res	Type	Atoms	Z	Observed(°)	Ideal(°)
2	A	401	A1EGS	C41-N40-C39	3.74	122.58	117.48
2	A	401	A1EGS	C28-N26-N27	3.67	124.81	120.50
2	A	401	A1EGS	C31-N05-C04	3.55	121.62	117.11
2	A	401	A1EGS	C31-C39-N40	-3.53	119.02	122.92
2	B	401	A1EGS	C41-N40-C39	3.39	122.10	117.48
2	B	401	A1EGS	N01-C02-N03	3.26	121.09	115.13
2	A	401	A1EGS	N01-C02-N03	3.23	121.05	115.13
2	B	401	A1EGS	C28-N26-N27	3.04	124.08	120.50
2	B	401	A1EGS	C31-C39-N40	-2.82	119.80	122.92
2	B	401	A1EGS	O30-C12-C11	2.59	121.89	117.35
2	A	401	A1EGS	C16-C15-CL17	2.58	122.65	118.49
2	A	401	A1EGS	C39-C31-N05	2.48	122.57	119.57
2	B	401	A1EGS	C39-C31-N05	2.35	122.42	119.57
2	A	401	A1EGS	C33-C34-C35	-2.31	120.18	122.89
2	B	401	A1EGS	C36-C35-C34	2.26	119.67	117.49
2	A	401	A1EGS	C36-C35-C34	2.20	119.61	117.49
2	A	401	A1EGS	F38-C34-C35	2.15	120.51	117.67
2	A	401	A1EGS	C14-C15-CL17	-2.12	117.22	119.78
2	A	401	A1EGS	N01-C06-N05	2.11	120.09	115.81
2	B	401	A1EGS	C33-C34-C35	-2.00	120.55	122.89

There are no chirality outliers.

All (2) torsion outliers are listed below:

Mol	Chain	Res	Type	Atoms
2	A	401	A1EGS	C24-C19-N08-C02
2	B	401	A1EGS	C24-C19-N08-C02

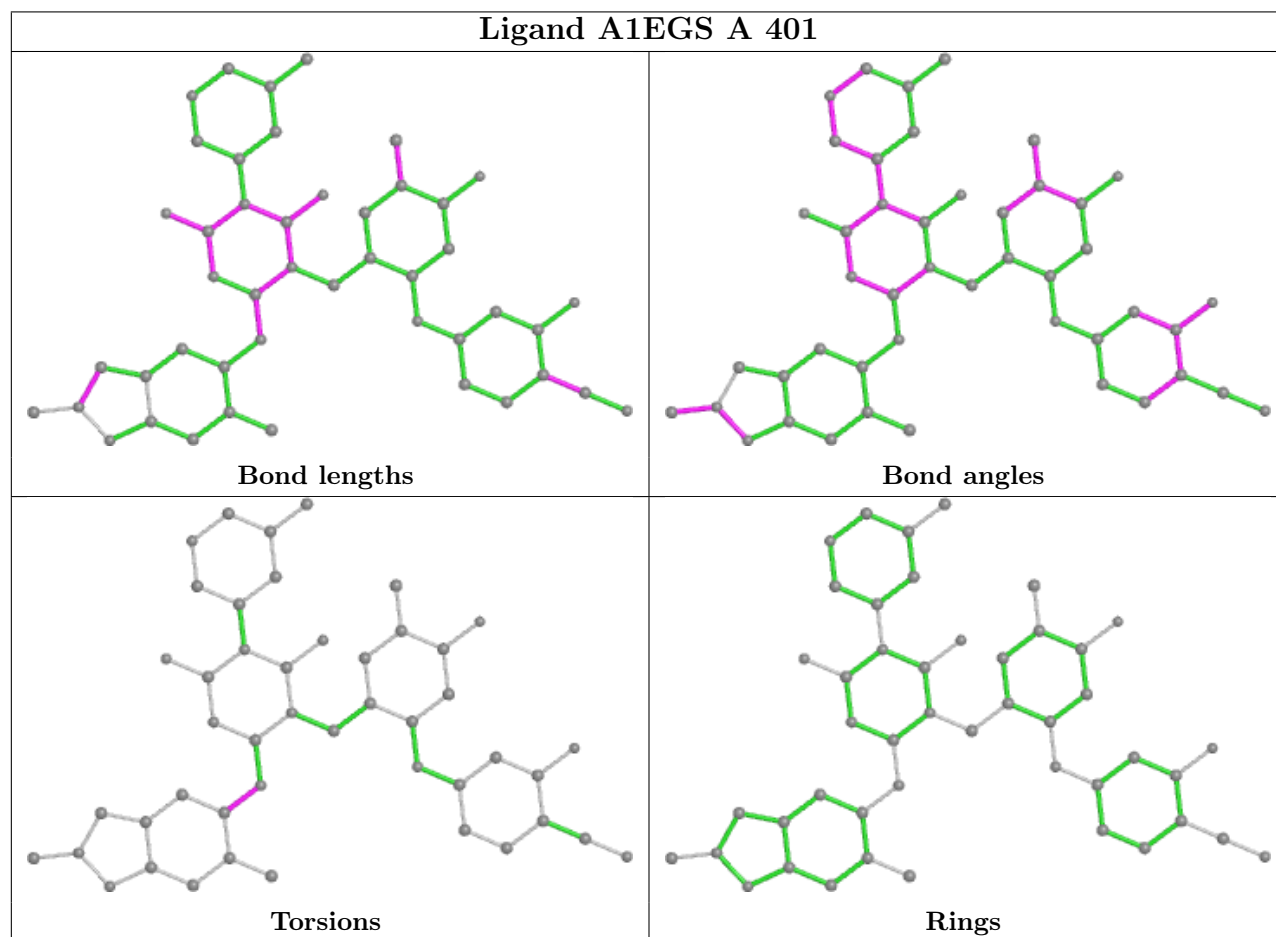
There are no ring outliers.

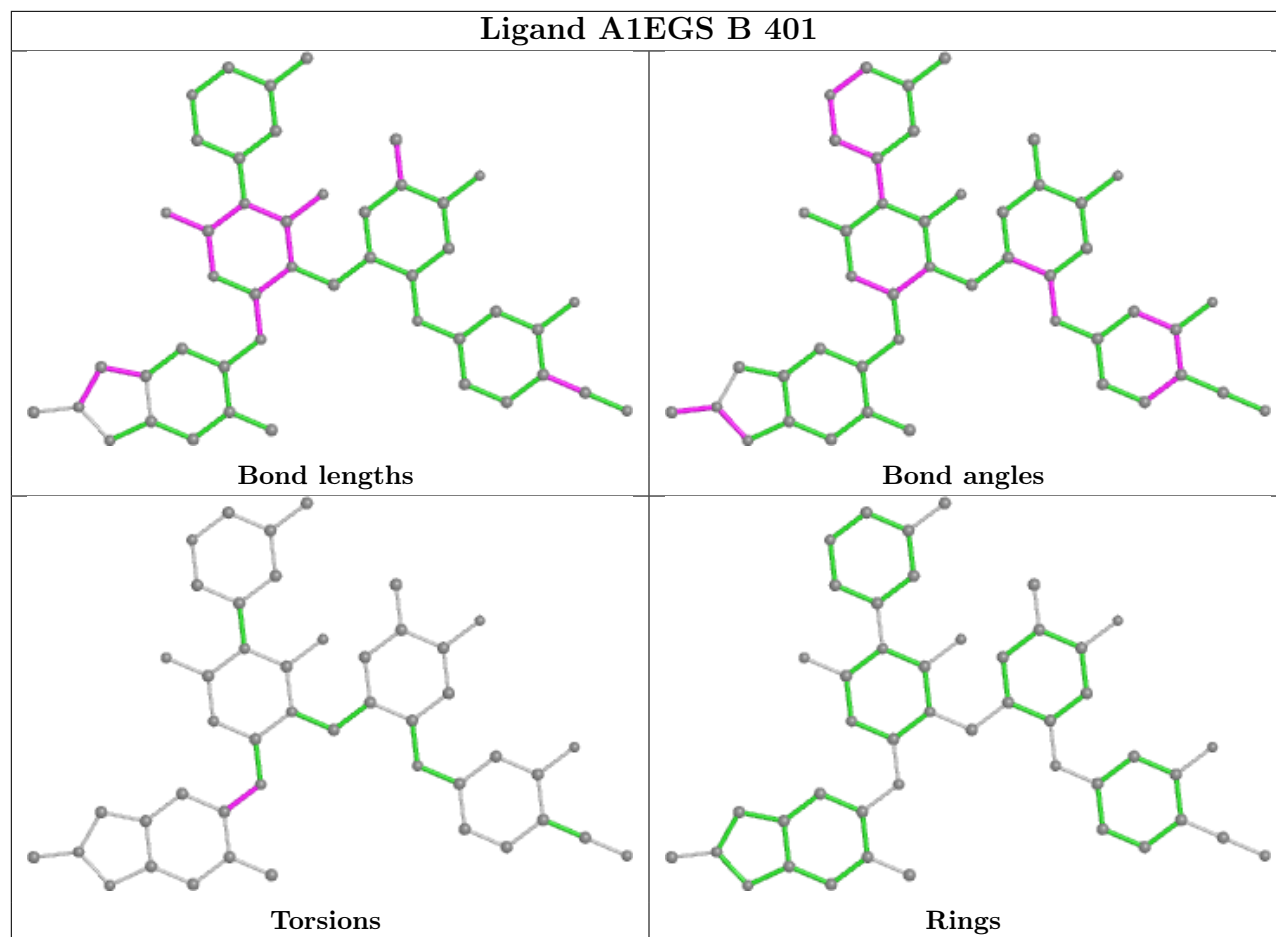
2 monomers are involved in 8 short contacts:

Mol	Chain	Res	Type	Clashes	Symm-Clashes
2	A	401	A1EGS	4	0
2	B	401	A1EGS	4	0

The following is a two-dimensional graphical depiction of Mogul quality analysis of bond lengths, bond angles, torsion angles, and ring geometry for all instances of the Ligand of Interest. In addition, ligands with molecular weight > 250 and outliers as shown on the validation Tables will also be included. For torsion angles, if less than 5% of the Mogul distribution of torsion angles is within 10 degrees of the torsion angle in question, then that torsion angle is considered an outlier. Any bond that is central to one or more torsion angles identified as an outlier by Mogul will be highlighted in the graph. For rings, the root-mean-square deviation (RMSD) between the ring in question and similar rings identified by Mogul is calculated over all ring torsion angles. If the

average RMSD is greater than 60 degrees and the minimal RMSD between the ring in question and any Mogul-identified rings is also greater than 60 degrees, then that ring is considered an outlier. The outliers are highlighted in purple. The color gray indicates Mogul did not find sufficient equivalents in the CSD to analyse the geometry.





5.7 Other polymers [i](#)

There are no such residues in this entry.

5.8 Polymer linkage issues [i](#)

There are no chain breaks in this entry.

6 Fit of model and data

6.1 Protein, DNA and RNA chains

In the following table, the column labelled ‘#RSRZ > 2’ contains the number (and percentage) of RSRZ outliers, followed by percent RSRZ outliers for the chain as percentile scores relative to all X-ray entries and entries of similar resolution. The OWAB column contains the minimum, median, 95th percentile and maximum values of the occupancy-weighted average B-factor per residue. The column labelled ‘Q < 0.9’ lists the number of (and percentage) of residues with an average occupancy less than 0.9.

Mol	Chain	Analysed	<RSRZ>	#RSRZ > 2		OWAB(Å ²)	Q < 0.9
1	A	300/301 (99%)	0.64	24 (8%)	20 20	13, 27, 52, 65	1 (0%)
1	B	301/301 (100%)	0.70	23 (7%)	21 21	13, 27, 52, 66	1 (0%)
All	All	601/602 (99%)	0.67	47 (7%)	20 20	13, 27, 52, 66	2 (0%)

All (47) RSRZ outliers are listed below:

Mol	Chain	Res	Type	RSRZ
1	B	110	GLN	5.8
1	A	278	GLY	5.2
1	B	230	PHE	4.0
1	A	230	PHE	3.5
1	B	301	SER	3.1
1	B	228	ASN	3.1
1	A	83	GLN	3.1
1	B	153	ASP	3.0
1	B	278	GLY	2.9
1	A	154	TYR	2.8
1	B	260	ALA	2.8
1	B	155	ASP	2.6
1	A	263	ASP	2.5
1	B	73	VAL	2.5
1	B	270	GLU	2.5
1	A	215	GLY	2.5
1	B	223	PHE	2.5
1	B	49	MET	2.4
1	A	195	GLY	2.4
1	B	237	TYR	2.4
1	A	232	LEU	2.3
1	A	223	PHE	2.3
1	B	235	MET	2.3
1	B	205	LEU	2.3

Continued on next page...

Continued from previous page...

Mol	Chain	Res	Type	RSRZ
1	B	272	LEU	2.3
1	A	225	THR	2.3
1	A	153	ASP	2.3
1	A	277	ASN	2.3
1	A	136	ILE	2.3
1	A	62	SER	2.2
1	B	226	THR	2.2
1	A	94	ALA	2.2
1	B	225	THR	2.2
1	B	76	ARG	2.2
1	B	277	ASN	2.2
1	B	240	GLU	2.2
1	A	216	ASP	2.2
1	A	77	VAL	2.1
1	A	249	ILE	2.1
1	B	234	ALA	2.1
1	B	239	TYR	2.1
1	A	262	LEU	2.1
1	A	74	GLN	2.1
1	A	72	ASN	2.1
1	A	246	HIS	2.1
1	A	259	ILE	2.0
1	A	50	LEU	2.0

6.2 Non-standard residues in protein, DNA, RNA chains [i](#)

There are no non-standard protein/DNA/RNA residues in this entry.

6.3 Carbohydrates [i](#)

There are no monosaccharides in this entry.

6.4 Ligands [i](#)

In the following table, the Atoms column lists the number of modelled atoms in the group and the number defined in the chemical component dictionary. The B-factors column lists the minimum, median, 95th percentile and maximum values of B factors of atoms in the group. The column labelled 'Q < 0.9' lists the number of atoms with occupancy less than 0.9.

Continued on next page...

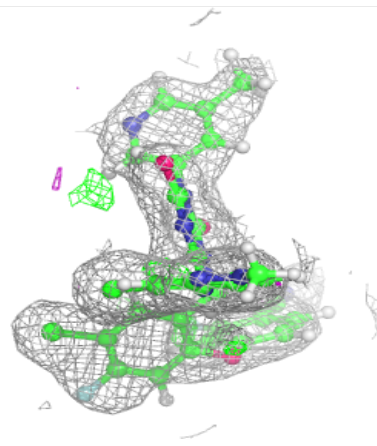
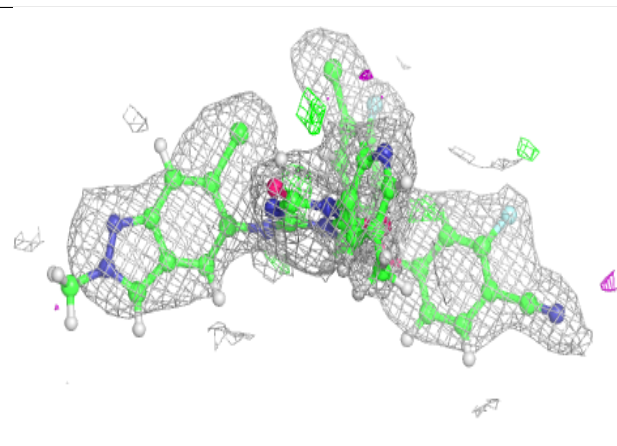
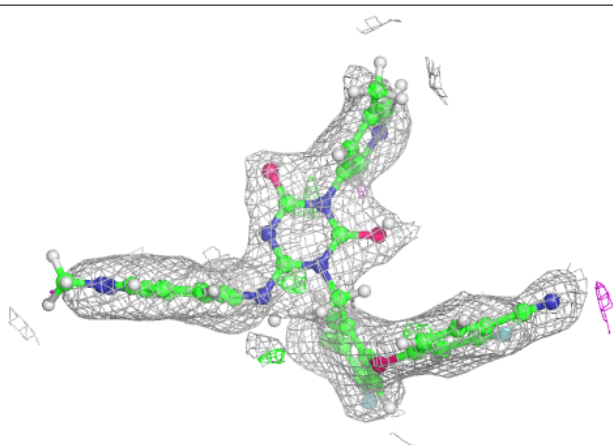
Continued from previous page...

Mol	Type	Chain	Res	Atoms	RSCC	RSR	B-factors(\AA^2)	Q<0.9
2	A1EGS	B	401	46/46	0.88	0.11	21,29,39,47	0
2	A1EGS	A	401	46/46	0.90	0.10	22,31,46,49	0

The following is a graphical depiction of the model fit to experimental electron density of all instances of the Ligand of Interest. In addition, ligands with molecular weight > 250 and outliers as shown on the geometry validation Tables will also be included. Each fit is shown from different orientation to approximate a three-dimensional view.

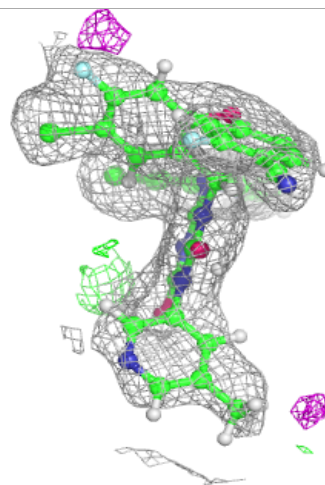
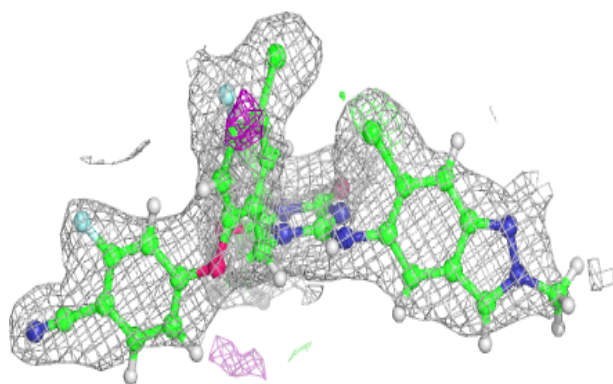
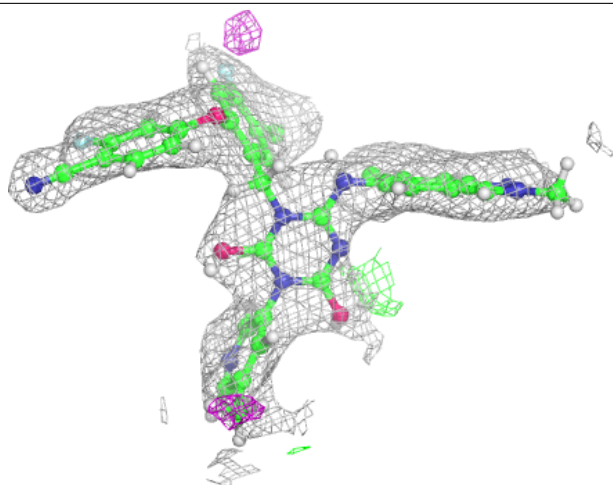
Electron density around A1EGS B 401:

2mF_o-DF_c (at 0.7 rmsd) in gray
mF_o-DF_c (at 3 rmsd) in purple (negative)
and green (positive)



Electron density around A1EGS A 401:

$2mF_o-DF_c$ (at 0.7 rmsd) in gray
 mF_o-DF_c (at 3 rmsd) in purple (negative)
and green (positive)



6.5 Other polymers ⓘ

There are no such residues in this entry.