



## Full wwPDB EM Validation Report ⓘ

Mar 31, 2025 – 04:56 PM JST

PDB ID : 6KLL / pdb\_00006kll  
EMDB ID : EMD-0711  
Title : F-actin of cardiac thin filament in low-calcium state  
Authors : Oda, T.; Yanagisawa, H.; Wakabayashi, T.  
Deposited on : 2019-07-30  
Resolution : 3.00 Å(reported)  
Based on initial model : 6DJO

This is a Full wwPDB EM Validation Report for a publicly released PDB entry.

We welcome your comments at [validation@mail.wwpdb.org](mailto:validation@mail.wwpdb.org)

A user guide is available at

<https://www.wwpdb.org/validation/2017/EMValidationReportHelp>  
with specific help available everywhere you see the ⓘ symbol.

The types of validation reports are described at

<http://www.wwpdb.org/validation/2017/FAQs#types>.

---

The following versions of software and data (see [references ⓘ](#)) were used in the production of this report:

EMDB validation analysis : 0.0.1.dev117  
Mogul : 1.8.5 (274361), CSD as541be (2020)  
MolProbity : 4.02b-467  
buster-report : 1.1.7 (2018)  
Percentile statistics : 20231227.v01 (using entries in the PDB archive December 27th 2023)  
MapQ : **FAILED**  
Ideal geometry (proteins) : Engh & Huber (2001)  
Ideal geometry (DNA, RNA) : Parkinson et al. (1996)  
Validation Pipeline (wwPDB-VP) : 2.42

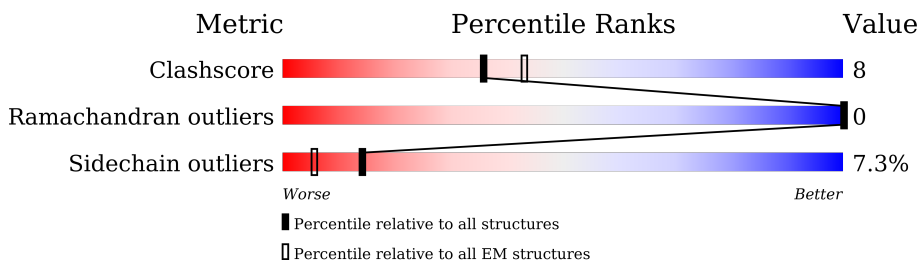
# 1 Overall quality at a glance

The following experimental techniques were used to determine the structure:

*ELECTRON MICROSCOPY*

The reported resolution of this entry is 3.00 Å.

Percentile scores (ranging between 0-100) for global validation metrics of the entry are shown in the following graphic. The table shows the number of entries on which the scores are based.



Metric	Whole archive (#Entries)	EM structures (#Entries)
Clashscore	210492	15764
Ramachandran outliers	207382	16835
Sidechain outliers	206894	16415

The table below summarises the geometric issues observed across the polymeric chains and their fit to the map. The red, orange, yellow and green segments of the bar indicate the fraction of residues that contain outliers for  $\geq 3$ , 2, 1 and 0 types of geometric quality criteria respectively. A grey segment represents the fraction of residues that are not modelled. The numeric value for each fraction is indicated below the corresponding segment, with a dot representing fractions  $\leq 5\%$ .

Mol	Chain	Length	Quality of chain
1	A	375	 74% 24% ..
1	B	375	 74% 23% ..
1	C	375	 74% 23% ..
1	D	375	 74% 23% ..

## 2 Entry composition

There are 3 unique types of molecules in this entry. The entry contains 11748 atoms, of which 0 are hydrogens and 0 are deuteriums.

In the tables below, the AltConf column contains the number of residues with at least one atom in alternate conformation and the Trace column contains the number of residues modelled with at most 2 atoms.

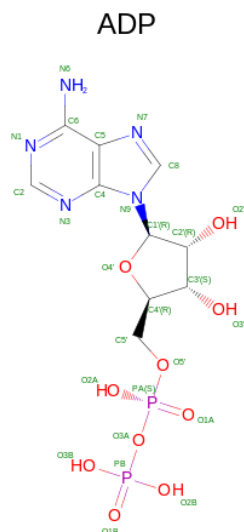
- Molecule 1 is a protein called Actin, alpha skeletal muscle.

Mol	Chain	Residues	Atoms					AltConf	Trace
1	A	372	Total	C	N	O	S	0	0
			2909	1842	490	556	21		
1	B	372	Total	C	N	O	S	0	0
			2909	1842	490	556	21		
1	C	372	Total	C	N	O	S	0	0
			2909	1842	490	556	21		
1	D	372	Total	C	N	O	S	0	0
			2909	1842	490	556	21		

- Molecule 2 is MAGNESIUM ION (CCD ID: MG) (formula: Mg).

Mol	Chain	Residues	Atoms		AltConf
2	A	1	Total	Mg	0
			1	1	
2	B	1	Total	Mg	0
			1	1	
2	C	1	Total	Mg	0
			1	1	
2	D	1	Total	Mg	0
			1	1	

- Molecule 3 is ADENOSINE-5'-DIPHOSPHATE (CCD ID: ADP) (formula: C<sub>10</sub>H<sub>15</sub>N<sub>5</sub>O<sub>10</sub>P<sub>2</sub>).



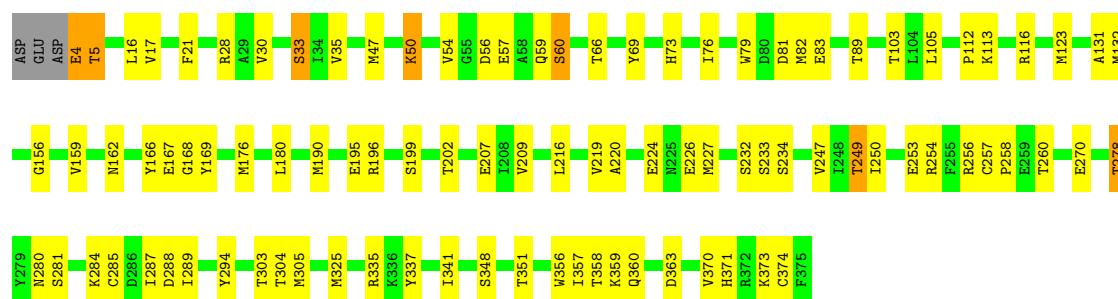
Mol	Chain	Residues	Atoms					AltConf
3	A	1	Total 27	C 10	N 5	O 10	P 2	0
3	B	1	Total 27	C 10	N 5	O 10	P 2	0
3	C	1	Total 27	C 10	N 5	O 10	P 2	0
3	D	1	Total 27	C 10	N 5	O 10	P 2	0

### 3 Residue-property plots

These plots are drawn for all protein, RNA, DNA and oligosaccharide chains in the entry. The first graphic for a chain summarises the proportions of the various outlier classes displayed in the second graphic. The second graphic shows the sequence view annotated by issues in geometry. Residues are color-coded according to the number of geometric quality criteria for which they contain at least one outlier: green = 0, yellow = 1, orange = 2 and red = 3 or more. Stretches of 2 or more consecutive residues without any outlier are shown as a green connector. Residues present in the sample, but not in the model, are shown in grey.

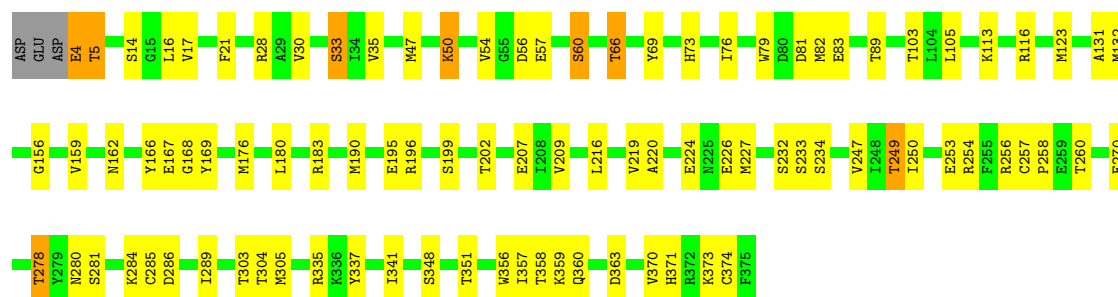
- Molecule 1: Actin, alpha skeletal muscle

Chain A: 



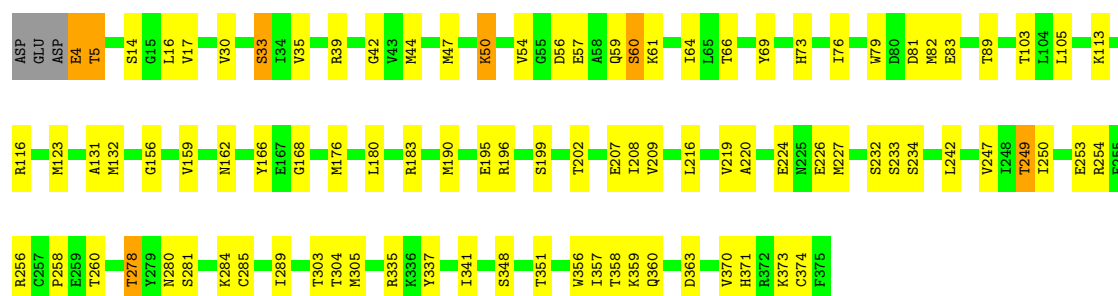
- Molecule 1: Actin, alpha skeletal muscle

Chain B: 

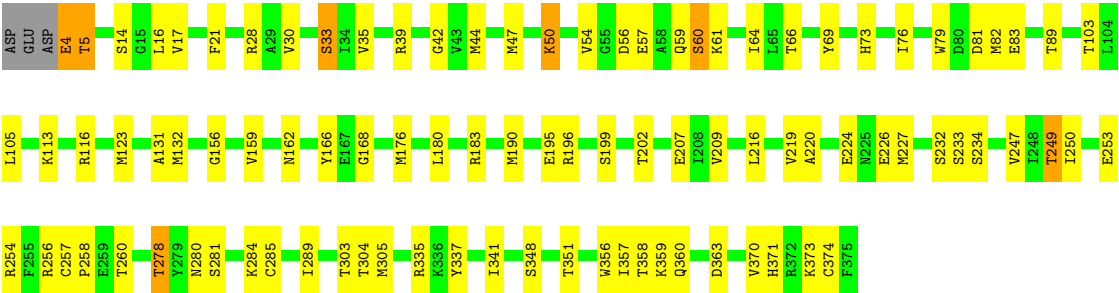


- Molecule 1: Actin, alpha skeletal muscle

Chain C: 



● Molecule 1: Actin, alpha skeletal muscle



## 4 Experimental information

Property	Value	Source
EM reconstruction method	SINGLE PARTICLE	Depositor
Imposed symmetry	POINT, C1	Depositor
Number of particles used	515775	Depositor
Resolution determination method	FSC 0.143 CUT-OFF	Depositor
CTF correction method	PHASE FLIPPING AND AMPLITUDE CORRECTION	Depositor
Microscope	FEI TITAN KRIOS	Depositor
Voltage (kV)	300	Depositor
Electron dose ( $e^-/\text{\AA}^2$ )	60	Depositor
Minimum defocus (nm)	100	Depositor
Maximum defocus (nm)	1100	Depositor
Magnification	81000	Depositor
Image detector	GATAN K3 (6k x 4k)	Depositor

## 5 Model quality [i](#)

### 5.1 Standard geometry [i](#)

Bond lengths and bond angles in the following residue types are not validated in this section: HIC, MG, ADP

The Z score for a bond length (or angle) is the number of standard deviations the observed value is removed from the expected value. A bond length (or angle) with  $|Z| > 5$  is considered an outlier worth inspection. RMSZ is the root-mean-square of all Z scores of the bond lengths (or angles).

Mol	Chain	Bond lengths		Bond angles	
		RMSZ	$\# Z  > 5$	RMSZ	$\# Z  > 5$
1	A	0.38	0/2959	0.48	0/4006
1	B	0.38	0/2959	0.48	0/4006
1	C	0.38	0/2959	0.48	0/4006
1	D	0.38	0/2959	0.48	0/4006
All	All	0.38	0/11836	0.48	0/16024

There are no bond length outliers.

There are no bond angle outliers.

There are no chirality outliers.

There are no planarity outliers.

### 5.2 Too-close contacts [i](#)

In the following table, the Non-H and H(model) columns list the number of non-hydrogen atoms and hydrogen atoms in the chain respectively. The H(added) column lists the number of hydrogen atoms added and optimized by MolProbity. The Clashes column lists the number of clashes within the asymmetric unit, whereas Symm-Clashes lists symmetry-related clashes.

Mol	Chain	Non-H	H(model)	H(added)	Clashes	Symm-Clashes
1	A	2909	0	2878	50	0
1	B	2909	0	2878	51	0
1	C	2909	0	2878	48	0
1	D	2909	0	2878	48	0
2	A	1	0	0	0	0
2	B	1	0	0	0	0
2	C	1	0	0	0	0
2	D	1	0	0	0	0
3	A	27	0	12	0	0

*Continued on next page...*

*Continued from previous page...*

Mol	Chain	Non-H	H(model)	H(added)	Clashes	Symm-Clashes
3	B	27	0	12	0	0
3	C	27	0	12	0	0
3	D	27	0	12	0	0
All	All	11748	0	11560	177	0

The all-atom clashscore is defined as the number of clashes found per 1000 atoms (including hydrogen atoms). The all-atom clashscore for this structure is 8.

All (177) close contacts within the same asymmetric unit are listed below, sorted by their clash magnitude.

Atom-1	Atom-2	Interatomic distance (Å)	Clash overlap (Å)
1:A:113:LYS:HG2	1:B:195:GLU:HB2	1.45	0.97
1:B:168:GLY:HA2	1:D:44:MET:HG3	1.65	0.77
1:B:169:TYR:HA	1:D:42:GLY:HA2	1.69	0.74
1:D:304:THR:O	1:D:335:ARG:NH1	2.23	0.72
1:A:304:THR:O	1:A:335:ARG:NH1	2.23	0.71
1:C:304:THR:O	1:C:335:ARG:NH1	2.23	0.71
1:D:56:ASP:O	1:D:60:SER:N	2.24	0.70
1:B:56:ASP:O	1:B:60:SER:N	2.24	0.70
1:B:304:THR:O	1:B:335:ARG:NH1	2.23	0.70
1:C:56:ASP:O	1:C:60:SER:N	2.24	0.70
1:A:56:ASP:O	1:A:60:SER:N	2.24	0.69
1:B:195:GLU:OE2	1:B:256:ARG:NH1	2.30	0.65
1:B:116:ARG:HD3	1:B:370:VAL:HG22	1.80	0.64
1:A:195:GLU:OE2	1:A:256:ARG:NH1	2.30	0.64
1:C:195:GLU:OE2	1:C:256:ARG:NH1	2.30	0.64
1:D:195:GLU:OE2	1:D:256:ARG:NH1	2.30	0.64
1:D:116:ARG:HD3	1:D:370:VAL:HG22	1.80	0.63
1:C:196:ARG:NH1	1:C:249:THR:O	2.32	0.63
1:A:116:ARG:HD3	1:A:370:VAL:HG22	1.80	0.63
1:A:196:ARG:NH1	1:A:249:THR:O	2.32	0.62
1:C:116:ARG:HD3	1:C:370:VAL:HG22	1.80	0.62
1:D:196:ARG:NH1	1:D:249:THR:O	2.32	0.62
1:B:196:ARG:NH1	1:B:249:THR:O	2.32	0.62
1:D:35:VAL:HG21	1:D:81:ASP:HB3	1.82	0.62
1:C:220:ALA:HB1	1:C:226:GLU:HG3	1.82	0.61
1:A:220:ALA:HB1	1:A:226:GLU:HG3	1.83	0.61
1:A:35:VAL:HG21	1:A:81:ASP:HB3	1.82	0.61
1:C:35:VAL:HG21	1:C:81:ASP:HB3	1.82	0.61
1:B:220:ALA:HB1	1:B:226:GLU:HG3	1.83	0.60
1:D:220:ALA:HB1	1:D:226:GLU:HG3	1.82	0.60

*Continued on next page...*

*Continued from previous page...*

Atom-1	Atom-2	Interatomic distance (Å)	Clash overlap (Å)
1:B:285:CYS:HB3	1:B:289:ILE:HD11	1.84	0.60
1:B:35:VAL:HG21	1:B:81:ASP:HB3	1.82	0.60
1:D:285:CYS:HB3	1:D:289:ILE:HD11	1.84	0.60
1:A:168:GLY:HA2	1:C:44:MET:HG3	1.84	0.60
1:B:166:TYR:O	1:B:168:GLY:N	2.36	0.59
1:A:285:CYS:HB3	1:A:289:ILE:HD11	1.84	0.59
1:C:285:CYS:HB3	1:C:289:ILE:HD11	1.84	0.59
1:C:166:TYR:O	1:C:168:GLY:N	2.36	0.59
1:A:156:GLY:O	1:A:303:THR:OG1	2.17	0.58
1:D:166:TYR:O	1:D:168:GLY:N	2.36	0.58
1:A:166:TYR:O	1:A:168:GLY:N	2.36	0.58
1:B:166:TYR:HD2	1:D:64:ILE:HD13	1.68	0.58
1:D:216:LEU:O	1:D:254:ARG:NH1	2.37	0.58
1:D:156:GLY:O	1:D:303:THR:OG1	2.17	0.58
1:B:33:SER:O	1:B:33:SER:OG	2.22	0.57
1:A:216:LEU:O	1:A:254:ARG:NH1	2.37	0.57
1:D:190:MET:HG2	1:D:209:VAL:HG21	1.86	0.57
1:C:216:LEU:O	1:C:254:ARG:NH1	2.37	0.57
1:B:216:LEU:O	1:B:254:ARG:NH1	2.37	0.57
1:B:357:ILE:HD11	1:B:373:LYS:HG3	1.86	0.57
1:A:357:ILE:HD11	1:A:373:LYS:HG3	1.86	0.57
1:A:190:MET:HG2	1:A:209:VAL:HG21	1.86	0.57
1:B:190:MET:HG2	1:B:209:VAL:HG21	1.86	0.57
1:D:357:ILE:HD11	1:D:373:LYS:HG3	1.86	0.57
1:A:287:ILE:HD11	1:C:242:LEU:HD23	1.87	0.57
1:B:156:GLY:O	1:B:303:THR:OG1	2.17	0.57
1:C:357:ILE:HD11	1:C:373:LYS:HG3	1.86	0.56
1:C:190:MET:HG2	1:C:209:VAL:HG21	1.86	0.56
1:C:359:LYS:NZ	1:C:363:ASP:OD1	2.39	0.56
1:A:169:TYR:CD2	1:C:64:ILE:HD12	2.41	0.56
1:C:69:TYR:OH	1:C:207:GLU:OE2	2.19	0.56
1:B:359:LYS:NZ	1:B:363:ASP:OD1	2.39	0.55
1:C:105:LEU:HD11	1:C:123:MET:HG3	1.89	0.55
1:A:105:LEU:HD11	1:A:123:MET:HG3	1.89	0.55
1:D:33:SER:O	1:D:33:SER:OG	2.22	0.55
1:A:359:LYS:NZ	1:A:363:ASP:OD1	2.39	0.55
1:D:359:LYS:NZ	1:D:363:ASP:OD1	2.39	0.55
1:D:69:TYR:OH	1:D:207:GLU:OE2	2.19	0.55
1:A:69:TYR:OH	1:A:207:GLU:OE2	2.19	0.54
1:A:33:SER:O	1:A:33:SER:OG	2.22	0.54
1:B:286:ASP:OD1	1:D:39:ARG:NH2	2.39	0.53

*Continued on next page...*

*Continued from previous page...*

Atom-1	Atom-2	Interatomic distance (Å)	Clash overlap (Å)
1:D:105:LEU:HD11	1:D:123:MET:HG3	1.89	0.53
1:B:105:LEU:HD11	1:B:123:MET:HG3	1.89	0.53
1:C:156:GLY:O	1:C:303:THR:OG1	2.17	0.52
1:B:167:GLU:OE1	1:D:61:LYS:NZ	2.36	0.52
1:A:270:GLU:OE2	1:B:66:THR:HG23	2.10	0.52
1:B:69:TYR:OH	1:B:207:GLU:OE2	2.19	0.52
1:C:131:ALA:HB1	1:C:356:TRP:HB3	1.91	0.52
1:A:131:ALA:HB1	1:A:356:TRP:HB3	1.91	0.51
1:B:131:ALA:HB1	1:B:356:TRP:HB3	1.91	0.51
1:D:131:ALA:HB1	1:D:356:TRP:HB3	1.91	0.51
1:A:112:PRO:HA	1:B:195:GLU:HA	1.91	0.51
1:A:103:THR:O	1:A:132:MET:HA	2.11	0.51
1:C:103:THR:O	1:C:132:MET:HA	2.11	0.50
1:B:113:LYS:HG2	1:C:195:GLU:HB2	1.92	0.50
1:B:103:THR:O	1:B:132:MET:HA	2.11	0.49
1:D:103:THR:O	1:D:132:MET:HA	2.11	0.49
1:B:270:GLU:HB2	1:C:39:ARG:NH1	2.27	0.49
1:A:227:MET:HB2	1:A:227:MET:HE2	1.68	0.48
1:D:79:TRP:O	1:D:83:GLU:HG3	2.15	0.47
1:B:79:TRP:O	1:B:83:GLU:HG3	2.14	0.47
1:B:337:TYR:O	1:B:341:ILE:HG12	2.14	0.47
1:C:337:TYR:O	1:C:341:ILE:HG12	2.14	0.47
1:C:113:LYS:HG2	1:D:195:GLU:HB2	1.96	0.47
1:C:162:ASN:ND2	1:C:278:THR:OG1	2.48	0.47
1:A:76:ILE:HD13	1:A:82:MET:HG2	1.97	0.47
1:A:79:TRP:O	1:A:83:GLU:HG3	2.14	0.47
1:B:162:ASN:ND2	1:B:278:THR:OG1	2.48	0.47
1:C:14:SER:O	1:C:183:ARG:NH2	2.42	0.47
1:A:167:GLU:OE1	1:C:61:LYS:HG2	2.15	0.47
1:C:79:TRP:O	1:C:83:GLU:HG3	2.15	0.47
1:D:337:TYR:O	1:D:341:ILE:HG12	2.14	0.47
1:A:337:TYR:O	1:A:341:ILE:HG12	2.14	0.47
1:A:162:ASN:ND2	1:A:278:THR:OG1	2.48	0.46
1:D:16:LEU:HD21	1:D:30:VAL:HG13	1.98	0.46
1:D:76:ILE:HD13	1:D:82:MET:HG2	1.97	0.46
1:C:16:LEU:HD21	1:C:30:VAL:HG13	1.98	0.46
1:A:169:TYR:HA	1:C:42:GLY:HA2	1.98	0.46
1:B:16:LEU:HD21	1:B:30:VAL:HG13	1.98	0.46
1:C:76:ILE:HD13	1:C:82:MET:HG2	1.97	0.46
1:D:162:ASN:ND2	1:D:278:THR:OG1	2.48	0.46
1:A:16:LEU:HD21	1:A:30:VAL:HG13	1.98	0.46

*Continued on next page...*

*Continued from previous page...*

Atom-1	Atom-2	Interatomic distance (Å)	Clash overlap (Å)
1:B:14:SER:O	1:B:183:ARG:NH2	2.42	0.46
1:C:50:LYS:HD3	1:C:50:LYS:HA	1.64	0.46
1:D:227:MET:HB2	1:D:227:MET:HE2	1.68	0.46
1:B:76:ILE:HD13	1:B:82:MET:HG2	1.97	0.46
1:C:227:MET:HB2	1:C:227:MET:HE2	1.68	0.45
1:B:169:TYR:HA	1:D:42:GLY:CA	2.43	0.45
1:A:176:MET:HG3	1:A:281:SER:HB2	1.99	0.45
1:B:168:GLY:HA2	1:D:44:MET:CG	2.42	0.44
1:B:176:MET:HG3	1:B:281:SER:HB2	1.99	0.44
1:C:176:MET:HG3	1:C:281:SER:HB2	1.99	0.44
1:B:227:MET:HB2	1:B:227:MET:HE2	1.68	0.44
1:D:176:MET:HG3	1:D:281:SER:HB2	1.99	0.44
1:B:358:THR:HG22	1:B:360:GLN:HG3	2.00	0.44
1:D:358:THR:HG22	1:D:360:GLN:HG3	2.00	0.44
1:A:17:VAL:HG23	1:A:33:SER:HB2	2.00	0.44
1:C:17:VAL:HG23	1:C:33:SER:HB2	2.00	0.44
1:D:17:VAL:HG23	1:D:33:SER:HB2	2.00	0.44
1:C:358:THR:HG22	1:C:360:GLN:HG3	2.00	0.43
1:B:17:VAL:HG23	1:B:33:SER:HB2	2.00	0.43
1:B:50:LYS:HD3	1:B:50:LYS:HA	1.64	0.43
1:C:33:SER:O	1:C:33:SER:OG	2.22	0.43
1:A:219:VAL:HG22	1:A:258:PRO:HB2	2.00	0.42
1:B:4:GLU:OE1	1:B:5:THR:N	2.52	0.42
1:C:219:VAL:HG22	1:C:258:PRO:HB2	2.00	0.42
1:C:4:GLU:OE1	1:C:5:THR:N	2.52	0.42
1:D:219:VAL:HG22	1:D:258:PRO:HB2	2.00	0.42
1:A:59:GLN:HE22	1:A:207:GLU:HB3	1.85	0.42
1:A:288:ASP:OD1	1:C:208:ILE:HD11	2.20	0.42
1:C:59:GLN:HE22	1:C:207:GLU:HB3	1.85	0.42
1:D:4:GLU:OE1	1:D:5:THR:N	2.52	0.42
1:A:50:LYS:HD3	1:A:50:LYS:HA	1.64	0.42
1:A:180:LEU:HD11	1:A:260:THR:HG22	2.02	0.42
1:B:219:VAL:HG22	1:B:258:PRO:HB2	2.00	0.42
1:A:4:GLU:OE1	1:A:5:THR:N	2.52	0.42
1:A:358:THR:HG22	1:A:360:GLN:HG3	2.00	0.42
1:D:14:SER:O	1:D:183:ARG:NH2	2.42	0.41
1:B:257:CYS:HB3	1:B:258:PRO:HD3	2.02	0.41
1:D:257:CYS:HB3	1:D:258:PRO:HD3	2.02	0.41
1:D:280:ASN:O	1:D:284:LYS:HG3	2.21	0.41
1:A:305:MET:HA	1:A:335:ARG:NH1	2.35	0.41
1:B:250:ILE:HG13	1:B:253:GLU:HB2	2.02	0.41

*Continued on next page...*

Continued from previous page...

Atom-1	Atom-2	Interatomic distance (Å)	Clash overlap (Å)
1:D:180:LEU:HD11	1:D:260:THR:HG22	2.02	0.41
1:D:305:MET:HA	1:D:335:ARG:NH1	2.35	0.41
1:B:280:ASN:O	1:B:284:LYS:HG3	2.21	0.41
1:C:305:MET:HA	1:C:335:ARG:NH1	2.35	0.41
1:D:113:LYS:HD2	1:D:371:HIS:CE1	2.56	0.41
1:B:113:LYS:HD2	1:B:371:HIS:CE1	2.56	0.41
1:A:166:TYR:HD2	1:C:64:ILE:HD13	1.86	0.41
1:C:113:LYS:HD2	1:C:371:HIS:CE1	2.56	0.41
1:C:250:ILE:HG13	1:C:253:GLU:HB2	2.02	0.41
1:C:280:ASN:O	1:C:284:LYS:HG3	2.21	0.41
1:A:250:ILE:HG13	1:A:253:GLU:HB2	2.02	0.41
1:C:180:LEU:HD11	1:C:260:THR:HG22	2.02	0.41
1:D:50:LYS:HD3	1:D:50:LYS:HA	1.64	0.41
1:A:280:ASN:O	1:A:284:LYS:HG3	2.20	0.41
1:B:180:LEU:HD11	1:B:260:THR:HG22	2.02	0.41
1:B:305:MET:HA	1:B:335:ARG:NH1	2.35	0.41
1:A:257:CYS:HB3	1:A:258:PRO:HD3	2.02	0.40
1:D:250:ILE:HG13	1:D:253:GLU:HB2	2.02	0.40
1:A:21:PHE:HD2	1:A:28:ARG:HD3	1.86	0.40
1:A:113:LYS:HD2	1:A:371:HIS:CE1	2.56	0.40
1:D:21:PHE:HD2	1:D:28:ARG:HD3	1.86	0.40
1:A:294:TYR:CD2	1:A:325:MET:HE3	2.57	0.40
1:D:59:GLN:HE22	1:D:207:GLU:HB3	1.85	0.40
1:B:21:PHE:HD2	1:B:28:ARG:HD3	1.86	0.40

There are no symmetry-related clashes.

## 5.3 Torsion angles [i](#)

### 5.3.1 Protein backbone [i](#)

In the following table, the Percentiles column shows the percent Ramachandran outliers of the chain as a percentile score with respect to all PDB entries followed by that with respect to all EM entries.

The Analysed column shows the number of residues for which the backbone conformation was analysed, and the total number of residues.

Mol	Chain	Analysed	Favoured	Allowed	Outliers	Percentiles
1	A	369/375 (98%)	349 (95%)	20 (5%)	0	<b>100</b> <b>100</b>

Continued on next page...

*Continued from previous page...*

Mol	Chain	Analysed	Favoured	Allowed	Outliers	Percentiles	
1	B	369/375 (98%)	349 (95%)	20 (5%)	0	100	100
1	C	369/375 (98%)	349 (95%)	20 (5%)	0	100	100
1	D	369/375 (98%)	349 (95%)	20 (5%)	0	100	100
All	All	1476/1500 (98%)	1396 (95%)	80 (5%)	0	100	100

There are no Ramachandran outliers to report.

### 5.3.2 Protein sidechains ⓘ

In the following table, the Percentiles column shows the percent sidechain outliers of the chain as a percentile score with respect to all PDB entries followed by that with respect to all EM entries.

The Analysed column shows the number of residues for which the sidechain conformation was analysed, and the total number of residues.

Mol	Chain	Analysed	Rotameric	Outliers	Percentiles	
1	A	314/317 (99%)	291 (93%)	23 (7%)	11	39
1	B	314/317 (99%)	291 (93%)	23 (7%)	11	39
1	C	314/317 (99%)	291 (93%)	23 (7%)	11	39
1	D	314/317 (99%)	291 (93%)	23 (7%)	11	39
All	All	1256/1268 (99%)	1164 (93%)	92 (7%)	14	39

All (92) residues with a non-rotameric sidechain are listed below:

Mol	Chain	Res	Type
1	A	4	GLU
1	A	5	THR
1	A	33	SER
1	A	47	MET
1	A	50	LYS
1	A	54	VAL
1	A	57	GLU
1	A	60	SER
1	A	66	THR
1	A	89	THR
1	A	159	VAL
1	A	199	SER
1	A	202	THR

*Continued on next page...*

*Continued from previous page...*

Mol	Chain	Res	Type
1	A	224	GLU
1	A	232	SER
1	A	233	SER
1	A	234	SER
1	A	247	VAL
1	A	249	THR
1	A	278	THR
1	A	348	SER
1	A	351	THR
1	A	374	CYS
1	B	4	GLU
1	B	5	THR
1	B	33	SER
1	B	47	MET
1	B	50	LYS
1	B	54	VAL
1	B	57	GLU
1	B	60	SER
1	B	66	THR
1	B	89	THR
1	B	159	VAL
1	B	199	SER
1	B	202	THR
1	B	224	GLU
1	B	232	SER
1	B	233	SER
1	B	234	SER
1	B	247	VAL
1	B	249	THR
1	B	278	THR
1	B	348	SER
1	B	351	THR
1	B	374	CYS
1	C	4	GLU
1	C	5	THR
1	C	33	SER
1	C	47	MET
1	C	50	LYS
1	C	54	VAL
1	C	57	GLU
1	C	60	SER
1	C	66	THR

*Continued on next page...*

*Continued from previous page...*

Mol	Chain	Res	Type
1	C	89	THR
1	C	159	VAL
1	C	199	SER
1	C	202	THR
1	C	224	GLU
1	C	232	SER
1	C	233	SER
1	C	234	SER
1	C	247	VAL
1	C	249	THR
1	C	278	THR
1	C	348	SER
1	C	351	THR
1	C	374	CYS
1	D	4	GLU
1	D	5	THR
1	D	33	SER
1	D	47	MET
1	D	50	LYS
1	D	54	VAL
1	D	57	GLU
1	D	60	SER
1	D	66	THR
1	D	89	THR
1	D	159	VAL
1	D	199	SER
1	D	202	THR
1	D	224	GLU
1	D	232	SER
1	D	233	SER
1	D	234	SER
1	D	247	VAL
1	D	249	THR
1	D	278	THR
1	D	348	SER
1	D	351	THR
1	D	374	CYS

Sometimes sidechains can be flipped to improve hydrogen bonding and reduce clashes. All (12) such sidechains are listed below:

Mol	Chain	Res	Type
1	A	59	GLN

*Continued on next page...*

*Continued from previous page...*

Mol	Chain	Res	Type
1	A	161	HIS
1	A	162	ASN
1	B	59	GLN
1	B	161	HIS
1	B	162	ASN
1	C	59	GLN
1	C	161	HIS
1	C	162	ASN
1	D	59	GLN
1	D	161	HIS
1	D	162	ASN

### 5.3.3 RNA ⓘ

There are no RNA molecules in this entry.

## 5.4 Non-standard residues in protein, DNA, RNA chains ⓘ

4 non-standard protein/DNA/RNA residues are modelled in this entry.

In the following table, the Counts columns list the number of bonds (or angles) for which Mogul statistics could be retrieved, the number of bonds (or angles) that are observed in the model and the number of bonds (or angles) that are defined in the Chemical Component Dictionary. The Link column lists molecule types, if any, to which the group is linked. The Z score for a bond length (or angle) is the number of standard deviations the observed value is removed from the expected value. A bond length (or angle) with  $|Z| > 2$  is considered an outlier worth inspection. RMSZ is the root-mean-square of all Z scores of the bond lengths (or angles).

Mol	Type	Chain	Res	Link	Bond lengths			Bond angles		
					Counts	RMSZ	$\# Z  > 2$	Counts	RMSZ	$\# Z  > 2$
1	HIC	C	73	1	8,11,12	1.59	2 (25%)	6,14,16	1.32	1 (16%)
1	HIC	D	73	1	8,11,12	1.59	2 (25%)	6,14,16	1.31	1 (16%)
1	HIC	B	73	1	8,11,12	1.59	2 (25%)	6,14,16	1.31	1 (16%)
1	HIC	A	73	1	8,11,12	1.58	2 (25%)	6,14,16	1.31	1 (16%)

In the following table, the Chirals column lists the number of chiral outliers, the number of chiral centers analysed, the number of these observed in the model and the number defined in the Chemical Component Dictionary. Similar counts are reported in the Torsion and Rings columns. '-' means no outliers of that kind were identified.

Mol	Type	Chain	Res	Link	Chirals	Torsions	Rings
1	HIC	C	73	1	-	0/5/6/8	0/1/1/1
1	HIC	D	73	1	-	0/5/6/8	0/1/1/1
1	HIC	B	73	1	-	0/5/6/8	0/1/1/1
1	HIC	A	73	1	-	0/5/6/8	0/1/1/1

All (8) bond length outliers are listed below:

Mol	Chain	Res	Type	Atoms	Z	Observed(Å)	Ideal(Å)
1	C	73	HIC	CD2-CG	3.37	1.41	1.36
1	B	73	HIC	CD2-CG	3.37	1.41	1.36
1	D	73	HIC	CD2-CG	3.36	1.41	1.36
1	A	73	HIC	CD2-CG	3.35	1.41	1.36
1	B	73	HIC	CZ-NE2	-2.15	1.42	1.48
1	C	73	HIC	CZ-NE2	-2.15	1.42	1.48
1	A	73	HIC	CZ-NE2	-2.14	1.42	1.48
1	D	73	HIC	CZ-NE2	-2.13	1.42	1.48

All (4) bond angle outliers are listed below:

Mol	Chain	Res	Type	Atoms	Z	Observed(°)	Ideal(°)
1	C	73	HIC	CB-CA-C	-2.48	106.81	111.47
1	A	73	HIC	CB-CA-C	-2.48	106.82	111.47
1	B	73	HIC	CB-CA-C	-2.48	106.83	111.47
1	D	73	HIC	CB-CA-C	-2.47	106.83	111.47

There are no chirality outliers.

There are no torsion outliers.

There are no ring outliers.

No monomer is involved in short contacts.

## 5.5 Carbohydrates

There are no oligosaccharides in this entry.

## 5.6 Ligand geometry

Of 8 ligands modelled in this entry, 4 are monoatomic - leaving 4 for Mogul analysis.

In the following table, the Counts columns list the number of bonds (or angles) for which Mogul statistics could be retrieved, the number of bonds (or angles) that are observed in the model and the number of bonds (or angles) that are defined in the Chemical Component Dictionary. The

Link column lists molecule types, if any, to which the group is linked. The Z score for a bond length (or angle) is the number of standard deviations the observed value is removed from the expected value. A bond length (or angle) with  $|Z| > 2$  is considered an outlier worth inspection. RMSZ is the root-mean-square of all Z scores of the bond lengths (or angles).

Mol	Type	Chain	Res	Link	Bond lengths			Bond angles		
					Counts	RMSZ	# Z  > 2	Counts	RMSZ	# Z  > 2
3	ADP	C	802	2	24,29,29	0.94	1 (4%)	29,45,45	1.47	4 (13%)
3	ADP	B	802	2	24,29,29	0.93	1 (4%)	29,45,45	1.48	4 (13%)
3	ADP	A	802	2	24,29,29	0.94	1 (4%)	29,45,45	1.48	4 (13%)
3	ADP	D	802	2	24,29,29	0.93	1 (4%)	29,45,45	1.47	4 (13%)

In the following table, the Chirals column lists the number of chiral outliers, the number of chiral centers analysed, the number of these observed in the model and the number defined in the Chemical Component Dictionary. Similar counts are reported in the Torsion and Rings columns. '-' means no outliers of that kind were identified.

Mol	Type	Chain	Res	Link	Chirals	Torsions	Rings
3	ADP	C	802	2	-	0/12/32/32	0/3/3/3
3	ADP	B	802	2	-	0/12/32/32	0/3/3/3
3	ADP	A	802	2	-	0/12/32/32	0/3/3/3
3	ADP	D	802	2	-	0/12/32/32	0/3/3/3

All (4) bond length outliers are listed below:

Mol	Chain	Res	Type	Atoms	Z	Observed(Å)	Ideal(Å)
3	A	802	ADP	C5-C4	2.20	1.46	1.40
3	B	802	ADP	C5-C4	2.19	1.46	1.40
3	C	802	ADP	C5-C4	2.19	1.46	1.40
3	D	802	ADP	C5-C4	2.18	1.46	1.40

All (16) bond angle outliers are listed below:

Mol	Chain	Res	Type	Atoms	Z	Observed(°)	Ideal(°)
3	B	802	ADP	C3'-C2'-C1'	3.38	106.07	100.98
3	A	802	ADP	C3'-C2'-C1'	3.37	106.05	100.98
3	C	802	ADP	C3'-C2'-C1'	3.36	106.03	100.98
3	D	802	ADP	C3'-C2'-C1'	3.33	106.00	100.98
3	B	802	ADP	PA-O3A-PB	-3.27	121.60	132.83
3	A	802	ADP	PA-O3A-PB	-3.27	121.61	132.83
3	D	802	ADP	PA-O3A-PB	-3.27	121.62	132.83
3	C	802	ADP	PA-O3A-PB	-3.26	121.63	132.83
3	A	802	ADP	N3-C2-N1	-3.16	123.73	128.68

*Continued on next page...*

*Continued from previous page...*

Mol	Chain	Res	Type	Atoms	Z	Observed(°)	Ideal(°)
3	D	802	ADP	N3-C2-N1	-3.16	123.74	128.68
3	C	802	ADP	N3-C2-N1	-3.14	123.77	128.68
3	B	802	ADP	N3-C2-N1	-3.13	123.78	128.68
3	B	802	ADP	C4-C5-N7	-2.47	106.83	109.40
3	A	802	ADP	C4-C5-N7	-2.45	106.84	109.40
3	D	802	ADP	C4-C5-N7	-2.44	106.86	109.40
3	C	802	ADP	C4-C5-N7	-2.42	106.88	109.40

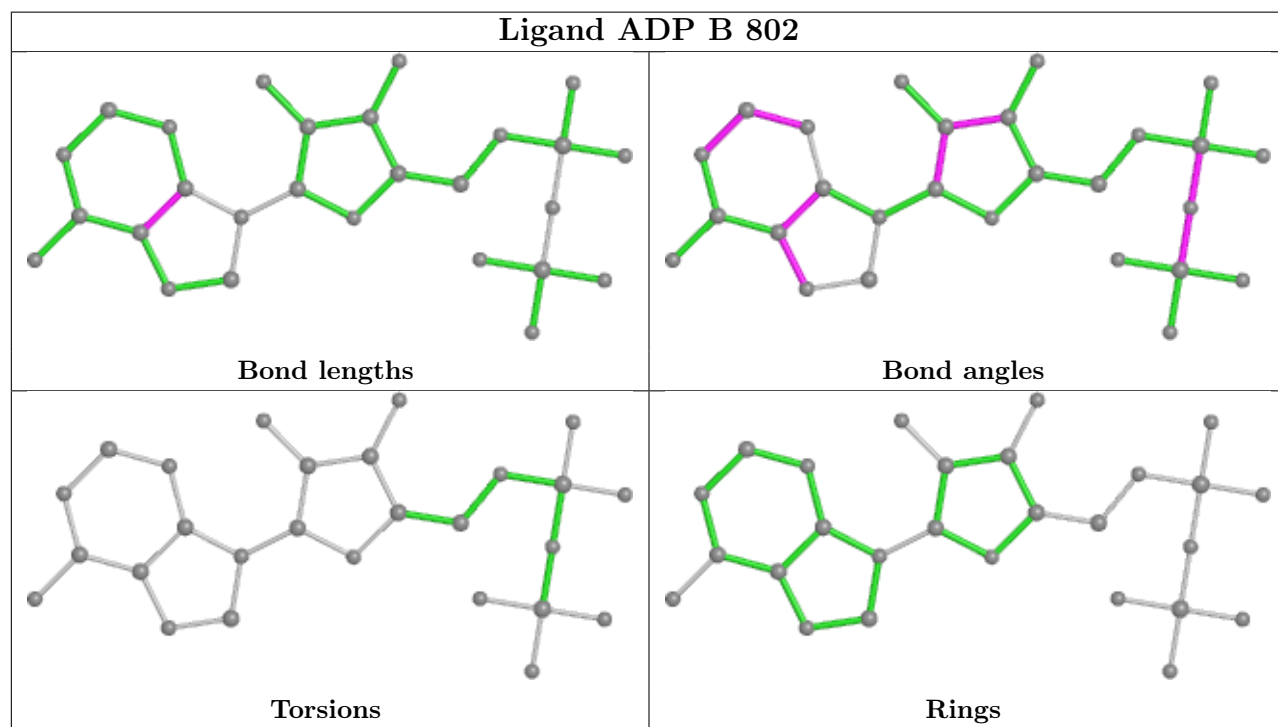
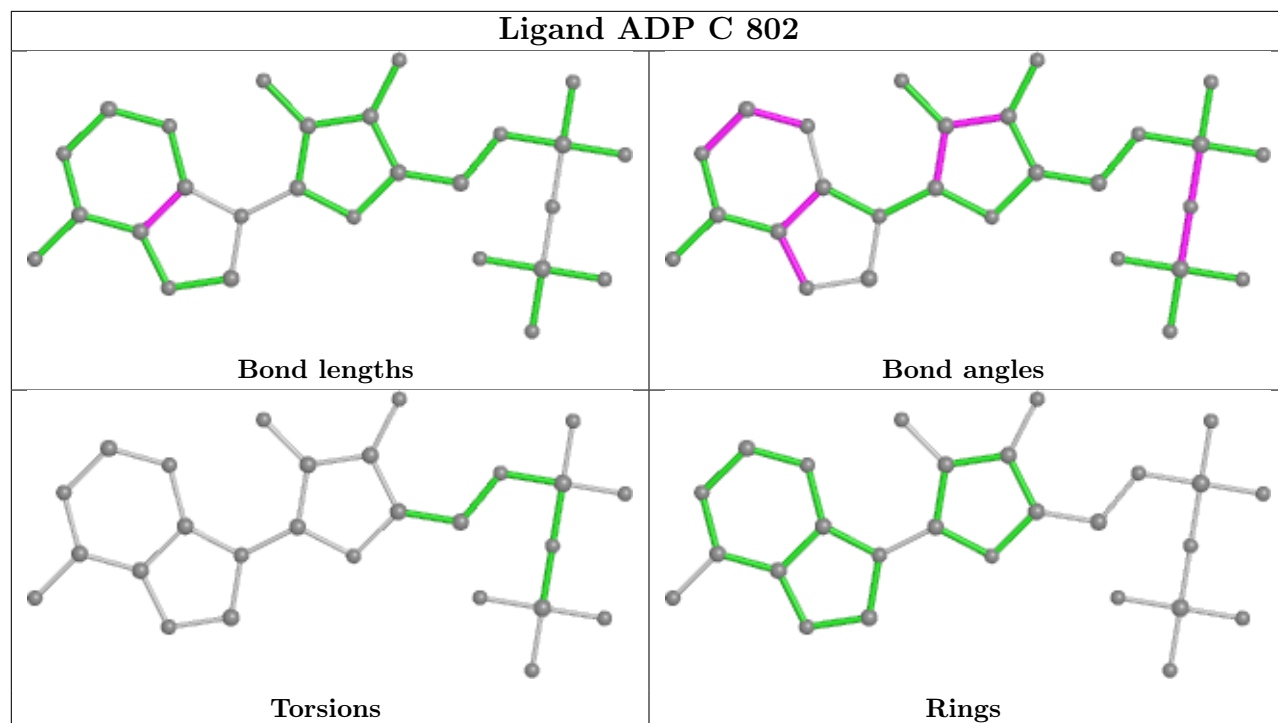
There are no chirality outliers.

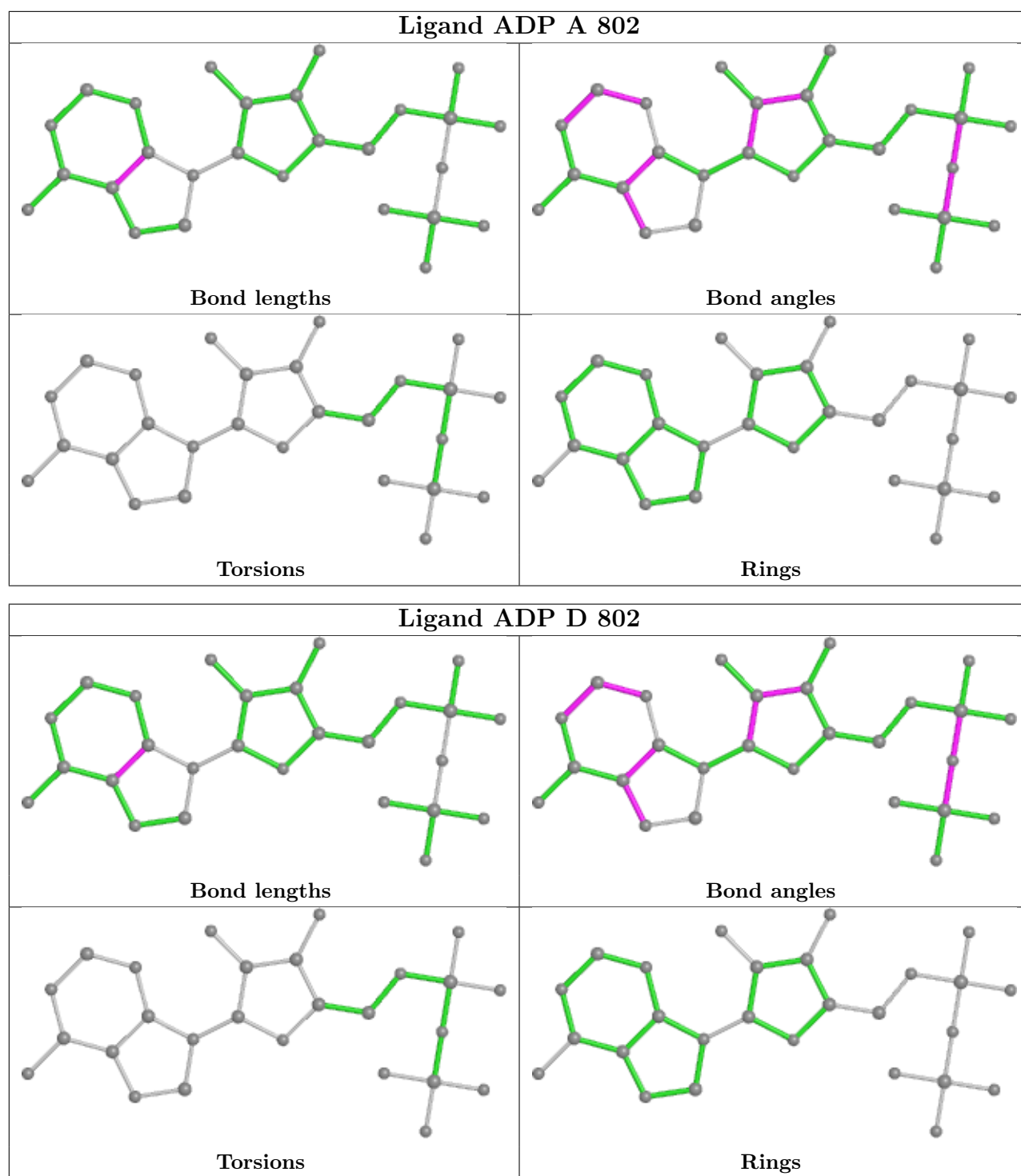
There are no torsion outliers.

There are no ring outliers.

No monomer is involved in short contacts.

The following is a two-dimensional graphical depiction of Mogul quality analysis of bond lengths, bond angles, torsion angles, and ring geometry for all instances of the Ligand of Interest. In addition, ligands with molecular weight > 250 and outliers as shown on the validation Tables will also be included. For torsion angles, if less than 5% of the Mogul distribution of torsion angles is within 10 degrees of the torsion angle in question, then that torsion angle is considered an outlier. Any bond that is central to one or more torsion angles identified as an outlier by Mogul will be highlighted in the graph. For rings, the root-mean-square deviation (RMSD) between the ring in question and similar rings identified by Mogul is calculated over all ring torsion angles. If the average RMSD is greater than 60 degrees and the minimal RMSD between the ring in question and any Mogul-identified rings is also greater than 60 degrees, then that ring is considered an outlier. The outliers are highlighted in purple. The color gray indicates Mogul did not find sufficient equivalents in the CSD to analyse the geometry.





## 5.7 Other polymers ⓘ

There are no such residues in this entry.

## 5.8 Polymer linkage issues ⓘ

There are no chain breaks in this entry.

## 6 Map visualisation

This section contains visualisations of the EMDB entry EMD-0711. These allow visual inspection of the internal detail of the map and identification of artifacts.

No raw map or half-maps were deposited for this entry and therefore no images, graphs, etc. pertaining to the raw map can be shown.

### 6.1 Orthogonal projections

This section was not generated.

### 6.2 Central slices

This section was not generated.

### 6.3 Largest variance slices

This section was not generated.

### 6.4 Orthogonal standard-deviation projections (False-color)

This section was not generated.

### 6.5 Orthogonal surface views

This section was not generated.

### 6.6 Mask visualisation

This section was not generated. No masks/segmentation were deposited.

## 7 Map analysis ⓘ

This section contains the results of statistical analysis of the map.

### 7.1 Map-value distribution ⓘ

This section was not generated.

### 7.2 Volume estimate versus contour level ⓘ

This section was not generated.

### 7.3 Rotationally averaged power spectrum ⓘ

This section was not generated. The rotationally averaged power spectrum had issues being displayed.

## 8 Fourier-Shell correlation ⓘ

This section was not generated. No FSC curve or half-maps provided.

## 9 Map-model fit

This section was not generated.