



wwPDB EM Validation Summary Report ⓘ

Mar 2, 2025 – 12:40 PM JST

PDB ID : 9KET
EMDB ID : EMD-62293
Title : Cryo-EM structure of Mycobacterium tuberculosis transcription activation complex with two PhoP molecules(composite map)
Authors : Lin, W.; Feng, Y.
Deposited on : 2024-11-05
Resolution : 3.46 Å(reported)

This is a wwPDB EM Validation Summary Report for a publicly released PDB entry.

We welcome your comments at validation@mail.wwpdb.org

A user guide is available at

<https://www.wwpdb.org/validation/2017/EMValidationReportHelp>
with specific help available everywhere you see the ⓘ symbol.

The types of validation reports are described at

<http://www.wwpdb.org/validation/2017/FAQs#types>.

The following versions of software and data (see [references ⓘ](#)) were used in the production of this report:

EMDB validation analysis : 0.0.1.dev117
MolProbity : 4.02b-467
Percentile statistics : 20231227.v01 (using entries in the PDB archive December 27th 2023)
MapQ : 1.9.13
Ideal geometry (proteins) : Engh & Huber (2001)
Ideal geometry (DNA, RNA) : Parkinson et al. (1996)
Validation Pipeline (wwPDB-VP) : 2.41.2

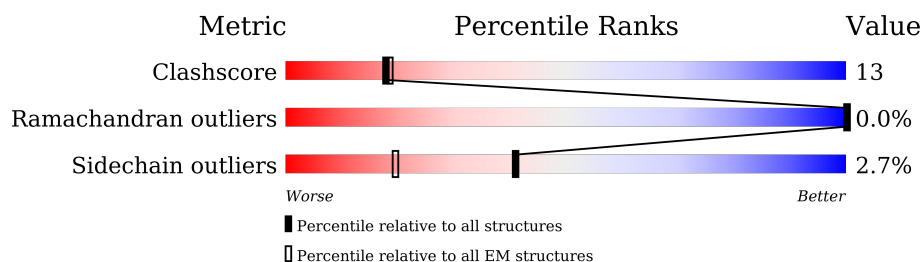
1 Overall quality at a glance

The following experimental techniques were used to determine the structure:

ELECTRON MICROSCOPY

The reported resolution of this entry is 3.46 Å.

Percentile scores (ranging between 0-100) for global validation metrics of the entry are shown in the following graphic. The table shows the number of entries on which the scores are based.



Metric	Whole archive (#Entries)	EM structures (#Entries)
Clashscore	210492	15764
Ramachandran outliers	207382	16835
Sidechain outliers	206894	16415

The table below summarises the geometric issues observed across the polymeric chains and their fit to the map. The red, orange, yellow and green segments of the bar indicate the fraction of residues that contain outliers for ≥ 3 , 2, 1 and 0 types of geometric quality criteria respectively. A grey segment represents the fraction of residues that are not modelled. The numeric value for each fraction is indicated below the corresponding segment, with a dot representing fractions $\leq 5\%$. The upper red bar (where present) indicates the fraction of residues that have poor fit to the EM map (all-atom inclusion $< 40\%$). The numeric value is given above the bar.

Mol	Chain	Length	Quality of chain
1	A	347	 48% 17% 35%
1	B	347	 46% 21% 32%
2	C	1178	 67% 27% 6%
3	D	1316	 70% 26% 4%
4	E	110	 54% 22% 25%
5	H	76	 37% 33% 30%
6	G	76	 22% 47% 30%
7	F	528	 37% 23% 39%

Continued on next page...

Continued from previous page...

Mol	Chain	Length	Quality of chain
8	J	270	<div><div><div></div><div></div><div></div></div><div>20%15%63%</div></div>
8	K	270	<div><div><div></div><div></div><div></div></div><div>11%24%13%63%</div></div>

2 Entry composition [i](#)

There are 10 unique types of molecules in this entry. The entry contains 28870 atoms, of which 0 are hydrogens and 0 are deuteriums.

In the tables below, the AltConf column contains the number of residues with at least one atom in alternate conformation and the Trace column contains the number of residues modelled with at most 2 atoms.

- Molecule 1 is a protein called DNA-directed RNA polymerase subunit alpha.

Mol	Chain	Residues	Atoms					AltConf	Trace
1	A	224	Total	C	N	O	S	0	0
			1708	1074	295	337	2		
1	B	237	Total	C	N	O	S	0	0
			1765	1115	301	346	3		

- Molecule 2 is a protein called DNA-directed RNA polymerase subunit beta.

Mol	Chain	Residues	Atoms					AltConf	Trace
2	C	1111	Total	C	N	O	S	0	0
			8551	5357	1500	1655	39		

- Molecule 3 is a protein called DNA-directed RNA polymerase subunit beta'.

Mol	Chain	Residues	Atoms					AltConf	Trace
3	D	1268	Total	C	N	O	S	0	0
			9877	6182	1795	1858	42		

- Molecule 4 is a protein called DNA-directed RNA polymerase subunit omega.

Mol	Chain	Residues	Atoms				AltConf	Trace
4	E	83	Total	C	N	O	0	0
			649	414	108	127		

- Molecule 5 is a DNA chain called Non-template strand DNA.

Mol	Chain	Residues	Atoms					AltConf	Trace
5	H	53	Total	C	N	O	P	0	0
			1078	513	189	323	53		

- Molecule 6 is a DNA chain called Template strand DNA.

Mol	Chain	Residues	Atoms					AltConf	Trace
6	G	53	Total	C	N	O	P	0	0
			1108	521	223	311	53		

- Molecule 7 is a protein called RNA polymerase sigma factor SigA.

Mol	Chain	Residues	Atoms					AltConf	Trace
7	F	322	Total	C	N	O	S	0	0
			2529	1577	454	489	9		

- Molecule 8 is a protein called Possible two component system response transcriptional positive regulator PhoP.

Mol	Chain	Residues	Atoms				AltConf	Trace
8	J	99	Total	C	N	O	0	0
			801	515	139	147		
8	K	99	Total	C	N	O	0	0
			801	515	139	147		

There are 46 discrepancies between the modelled and reference sequences:

Chain	Residue	Modelled	Actual	Comment	Reference
J	37	MET	-	insertion	UNP P71814
J	38	TYR	-	insertion	UNP P71814
J	39	CYS	-	insertion	UNP P71814
J	40	PYL	-	insertion	UNP P71814
J	41	ALA	-	insertion	UNP P71814
J	42	CYS	-	insertion	UNP P71814
J	43	THR	-	insertion	UNP P71814
J	44	GLU	-	insertion	UNP P71814
J	45	ARG	-	insertion	UNP P71814
J	46	ILE	-	insertion	UNP P71814
J	47	SEC	-	insertion	UNP P71814
J	48	MET	-	insertion	UNP P71814
J	49	THR	-	insertion	UNP P71814
J	50	SEC	-	insertion	UNP P71814
J	51	GLU	-	insertion	UNP P71814
J	52	ARG	-	insertion	UNP P71814
J	53	CYS	-	insertion	UNP P71814
J	54	SEC	-	insertion	UNP P71814
J	55	LEU	-	insertion	UNP P71814
J	56	PYL	-	insertion	UNP P71814
J	57	SER	-	insertion	UNP P71814
J	58	ILE	-	insertion	UNP P71814

Continued on next page...

Continued from previous page...

Chain	Residue	Modelled	Actual	Comment	Reference
J	59	SER	-	insertion	UNP P71814
K	37	MET	-	insertion	UNP P71814
K	38	TYR	-	insertion	UNP P71814
K	39	CYS	-	insertion	UNP P71814
K	40	PYL	-	insertion	UNP P71814
K	41	ALA	-	insertion	UNP P71814
K	42	CYS	-	insertion	UNP P71814
K	43	THR	-	insertion	UNP P71814
K	44	GLU	-	insertion	UNP P71814
K	45	ARG	-	insertion	UNP P71814
K	46	ILE	-	insertion	UNP P71814
K	47	SEC	-	insertion	UNP P71814
K	48	MET	-	insertion	UNP P71814
K	49	THR	-	insertion	UNP P71814
K	50	SEC	-	insertion	UNP P71814
K	51	GLU	-	insertion	UNP P71814
K	52	ARG	-	insertion	UNP P71814
K	53	CYS	-	insertion	UNP P71814
K	54	SEC	-	insertion	UNP P71814
K	55	LEU	-	insertion	UNP P71814
K	56	PYL	-	insertion	UNP P71814
K	57	SER	-	insertion	UNP P71814
K	58	ILE	-	insertion	UNP P71814
K	59	SER	-	insertion	UNP P71814

- Molecule 9 is ZINC ION (three-letter code: ZN) (formula: Zn) (labeled as "Ligand of Interest" by depositor).

Mol	Chain	Residues	Atoms		AltConf
9	D	2	Total	Zn	0
			2	2	

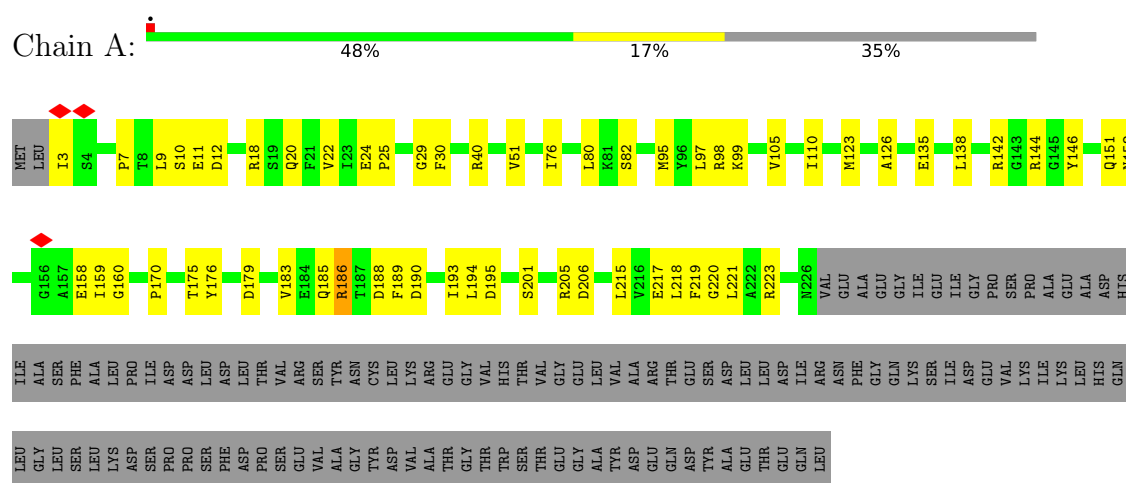
- Molecule 10 is MAGNESIUM ION (three-letter code: MG) (formula: Mg) (labeled as "Ligand of Interest" by depositor).

Mol	Chain	Residues	Atoms		AltConf
10	D	1	Total	Mg	0
			1	1	

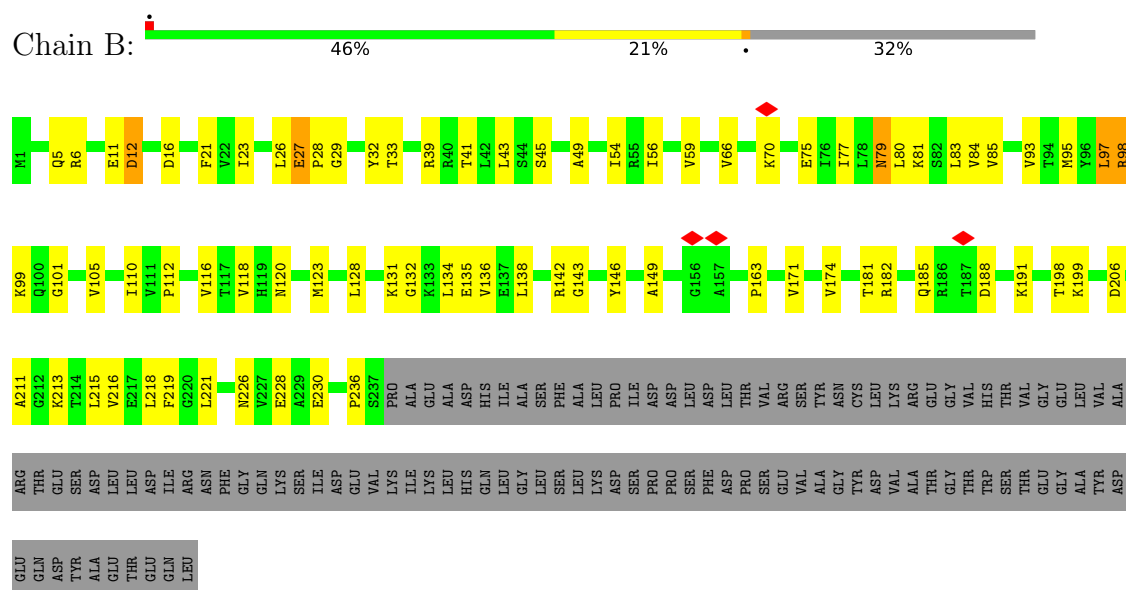
3 Residue-property plots

These plots are drawn for all protein, RNA, DNA and oligosaccharide chains in the entry. The first graphic for a chain summarises the proportions of the various outlier classes displayed in the second graphic. The second graphic shows the sequence view annotated by issues in geometry and atom inclusion in map density. Residues are color-coded according to the number of geometric quality criteria for which they contain at least one outlier: green = 0, yellow = 1, orange = 2 and red = 3 or more. A red diamond above a residue indicates a poor fit to the EM map for this residue (all-atom inclusion < 40%). Stretches of 2 or more consecutive residues without any outlier are shown as a green connector. Residues present in the sample, but not in the model, are shown in grey.

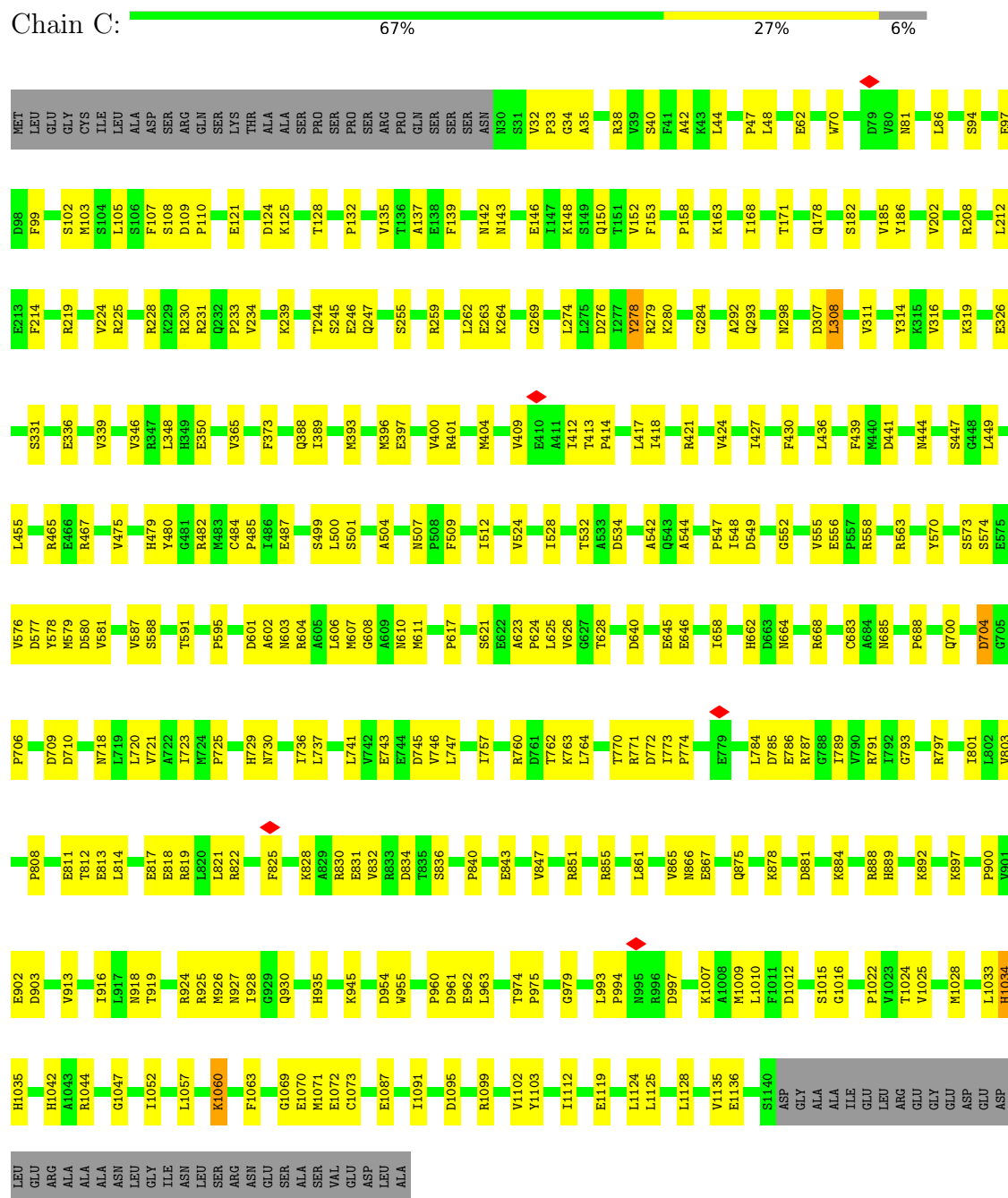
• Molecule 1: DNA-directed RNA polymerase subunit alpha

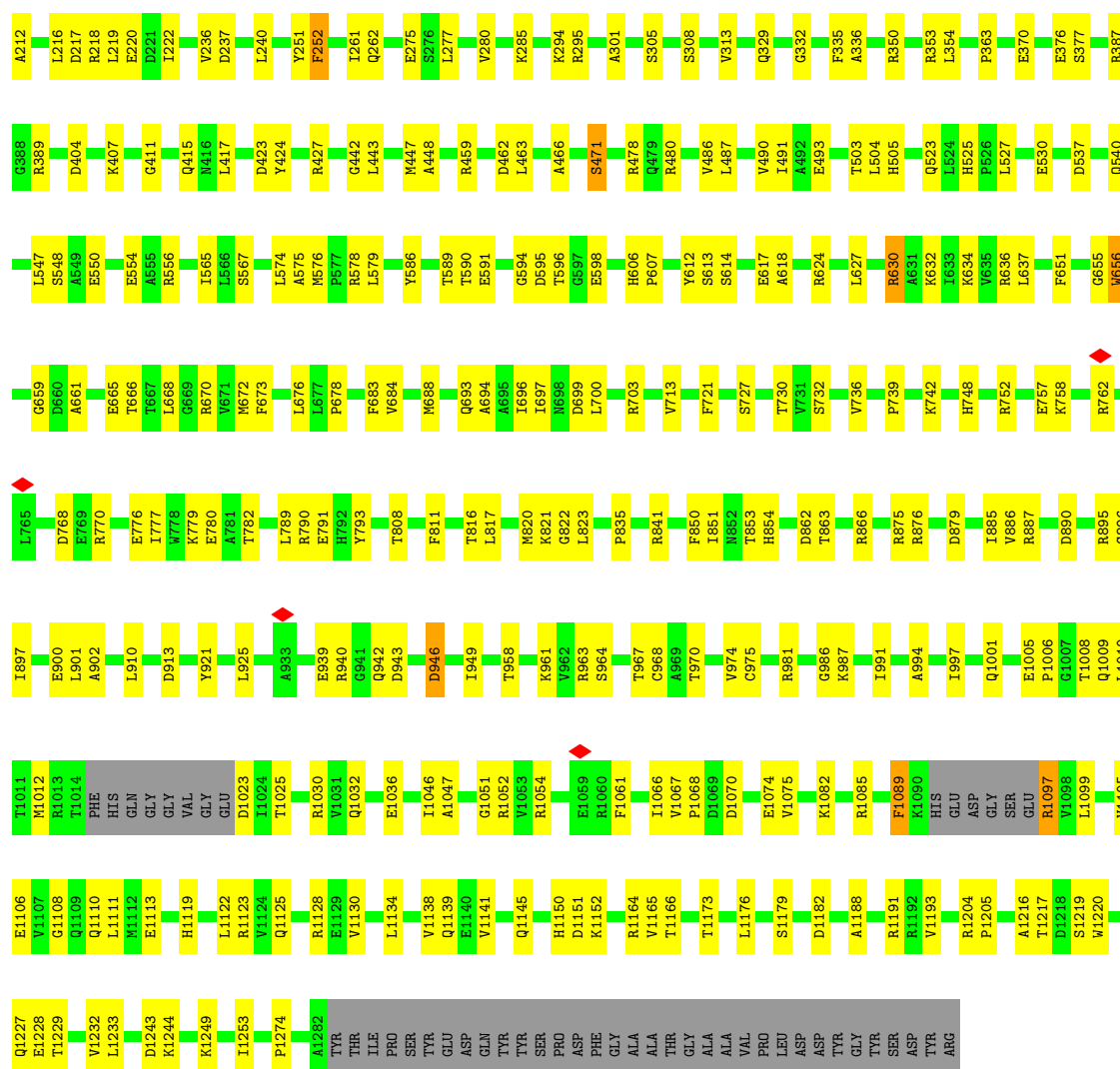


• Molecule 1: DNA-directed RNA polymerase subunit alpha

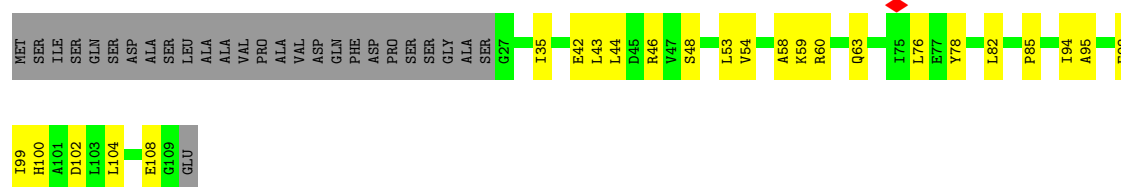


• Molecule 2: DNA-directed RNA polymerase subunit beta





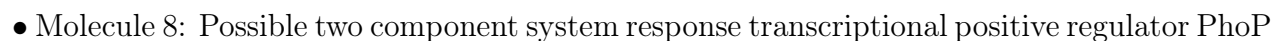
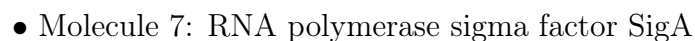
• Molecule 4: DNA-directed RNA polymerase subunit omega

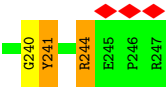


• Molecule 5: Non-template strand DNA

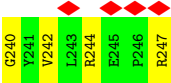
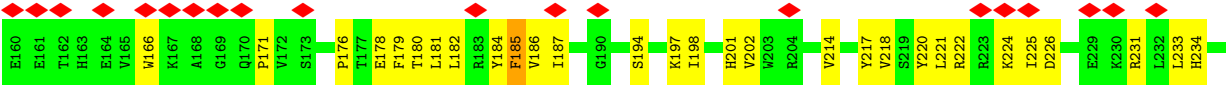
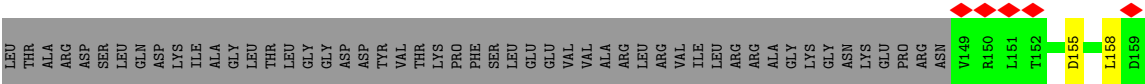
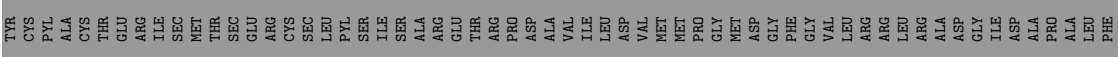
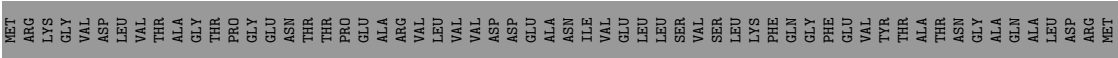


• Molecule 6: Template strand DNA





● Molecule 8: Possible two component system response transcriptional positive regulator PhoP



4 Experimental information

Property	Value	Source
EM reconstruction method	SINGLE PARTICLE	Depositor
Imposed symmetry	POINT, Not provided	
Number of particles used	32425	Depositor
Resolution determination method	FSC 0.143 CUT-OFF	Depositor
CTF correction method	NONE	Depositor
Microscope	TFS KRIOS	Depositor
Voltage (kV)	300	Depositor
Electron dose ($e^-/\text{\AA}^2$)	52	Depositor
Minimum defocus (nm)	1000	Depositor
Maximum defocus (nm)	2000	Depositor
Magnification	Not provided	
Image detector	GATAN K3 (6k x 4k)	Depositor
Maximum map value	0.495	Depositor
Minimum map value	-0.256	Depositor
Average map value	-0.002	Depositor
Map value standard deviation	0.020	Depositor
Recommended contour level	0.04	Depositor
Map size (\AA)	307.2, 307.2, 307.2	wwPDB
Map dimensions	256, 256, 256	wwPDB
Map angles ($^\circ$)	90.0, 90.0, 90.0	wwPDB
Pixel spacing (\AA)	1.2, 1.2, 1.2	Depositor

5 Model quality

5.1 Standard geometry

Bond lengths and bond angles in the following residue types are not validated in this section: ZN, MG

The Z score for a bond length (or angle) is the number of standard deviations the observed value is removed from the expected value. A bond length (or angle) with $|Z| > 5$ is considered an outlier worth inspection. RMSZ is the root-mean-square of all Z scores of the bond lengths (or angles).

Mol	Chain	Bond lengths		Bond angles	
		RMSZ	# Z >5	RMSZ	# Z >5
1	A	0.27	0/1734	0.54	0/2359
1	B	0.27	0/1792	0.57	0/2442
2	C	0.28	0/8706	0.54	0/11807
3	D	0.26	0/10040	0.53	0/13575
4	E	0.28	0/662	0.54	0/901
5	H	0.52	0/1205	0.94	0/1856
6	G	0.50	0/1249	0.86	0/1930
7	F	0.25	0/2559	0.56	0/3453
8	J	0.30	0/819	0.61	0/1111
8	K	0.26	0/819	0.56	0/1111
All	All	0.30	0/29585	0.59	0/40545

There are no bond length outliers.

There are no bond angle outliers.

There are no chirality outliers.

There are no planarity outliers.

5.2 Too-close contacts

In the following table, the Non-H and H(model) columns list the number of non-hydrogen atoms and hydrogen atoms in the chain respectively. The H(added) column lists the number of hydrogen atoms added and optimized by MolProbity. The Clashes column lists the number of clashes within the asymmetric unit, whereas Symm-Clashes lists symmetry-related clashes.

Mol	Chain	Non-H	H(model)	H(added)	Clashes	Symm-Clashes
1	A	1708	0	1745	45	0
1	B	1765	0	1794	56	0
2	C	8551	0	8448	236	0

Continued on next page...

Continued from previous page...

Mol	Chain	Non-H	H(model)	H(added)	Clashes	Symm-Clashes
3	D	9877	0	9921	233	0
4	E	649	0	645	17	0
5	H	1078	0	598	25	0
6	G	1108	0	592	33	0
7	F	2529	0	2536	101	0
8	J	801	0	799	44	0
8	K	801	0	799	26	0
9	D	2	0	0	0	0
10	D	1	0	0	0	0
All	All	28870	0	27877	739	0

The all-atom clashscore is defined as the number of clashes found per 1000 atoms (including hydrogen atoms). The all-atom clashscore for this structure is 13.

The worst 5 of 739 close contacts within the same asymmetric unit are listed below, sorted by their clash magnitude.

Atom-1	Atom-2	Interatomic distance (Å)	Clash overlap (Å)
2:C:811:GLU:HB3	8:J:197:LYS:HB3	1.53	0.90
2:C:625:LEU:HB2	2:C:718:ASN:HD21	1.46	0.80
7:F:500:ARG:HA	7:F:503:ILE:HD12	1.61	0.79
6:G:47:DG:H2''	6:G:48:DA:H5''	1.66	0.78
7:F:219:ALA:O	7:F:222:THR:HG23	1.82	0.78

There are no symmetry-related clashes.

5.3 Torsion angles ⓘ

5.3.1 Protein backbone ⓘ

In the following table, the Percentiles column shows the percent Ramachandran outliers of the chain as a percentile score with respect to all PDB entries followed by that with respect to all EM entries.

The Analysed column shows the number of residues for which the backbone conformation was analysed, and the total number of residues.

Mol	Chain	Analysed	Favoured	Allowed	Outliers	Percentiles	
1	A	222/347 (64%)	217 (98%)	5 (2%)	0	100	100
1	B	235/347 (68%)	222 (94%)	13 (6%)	0	100	100

Continued on next page...

Continued from previous page...

Mol	Chain	Analysed	Favoured	Allowed	Outliers	Percentiles	
2	C	1109/1178 (94%)	1041 (94%)	68 (6%)	0	100	100
3	D	1262/1316 (96%)	1208 (96%)	54 (4%)	0	100	100
4	E	81/110 (74%)	80 (99%)	1 (1%)	0	100	100
7	F	320/528 (61%)	311 (97%)	9 (3%)	0	100	100
8	J	97/270 (36%)	92 (95%)	4 (4%)	1 (1%)	13	46
8	K	97/270 (36%)	94 (97%)	3 (3%)	0	100	100
All	All	3423/4366 (78%)	3265 (95%)	157 (5%)	1 (0%)	100	100

All (1) Ramachandran outliers are listed below:

Mol	Chain	Res	Type
8	J	196	PRO

5.3.2 Protein sidechains ⓘ

In the following table, the Percentiles column shows the percent sidechain outliers of the chain as a percentile score with respect to all PDB entries followed by that with respect to all EM entries.

The Analysed column shows the number of residues for which the sidechain conformation was analysed, and the total number of residues.

Mol	Chain	Analysed	Rotameric	Outliers	Percentiles	
1	A	193/297 (65%)	191 (99%)	2 (1%)	73	84
1	B	195/297 (66%)	188 (96%)	7 (4%)	30	60
2	C	923/998 (92%)	903 (98%)	20 (2%)	47	71
3	D	1041/1095 (95%)	1010 (97%)	31 (3%)	36	65
4	E	69/90 (77%)	68 (99%)	1 (1%)	62	79
7	F	264/427 (62%)	255 (97%)	9 (3%)	32	61
8	J	87/225 (39%)	81 (93%)	6 (7%)	13	40
8	K	87/225 (39%)	85 (98%)	2 (2%)	45	71
All	All	2859/3654 (78%)	2781 (97%)	78 (3%)	41	67

5 of 78 residues with a non-rotameric sidechain are listed below:

Mol	Chain	Res	Type
3	D	1089	PHE

Continued on next page...

Continued from previous page...

Mol	Chain	Res	Type
8	J	174	LEU
3	D	1182	ASP
7	F	470	ARG
8	J	244	ARG

Sometimes sidechains can be flipped to improve hydrogen bonding and reduce clashes. 5 of 8 such sidechains are listed below:

Mol	Chain	Res	Type
8	J	201	HIS
8	J	188	ASN
3	D	854	HIS
3	D	304	GLN
3	D	1001	GLN

5.3.3 RNA [i](#)

There are no RNA molecules in this entry.

5.4 Non-standard residues in protein, DNA, RNA chains [i](#)

There are no non-standard protein/DNA/RNA residues in this entry.

5.5 Carbohydrates [i](#)

There are no oligosaccharides in this entry.

5.6 Ligand geometry [i](#)

Of 3 ligands modelled in this entry, 3 are monoatomic - leaving 0 for Mogul analysis.

There are no bond length outliers.

There are no bond angle outliers.

There are no chirality outliers.

There are no torsion outliers.

There are no ring outliers.

No monomer is involved in short contacts.

5.7 Other polymers [i](#)

There are no such residues in this entry.

5.8 Polymer linkage issues [i](#)

There are no chain breaks in this entry.

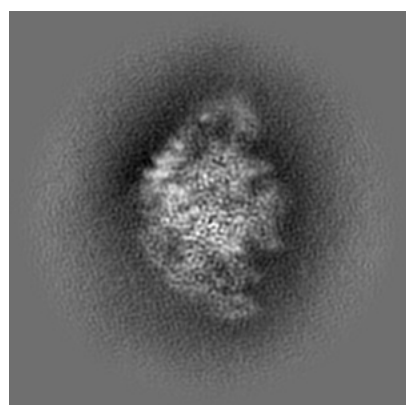
6 Map visualisation [i](#)

This section contains visualisations of the EMDB entry EMD-62293. These allow visual inspection of the internal detail of the map and identification of artifacts.

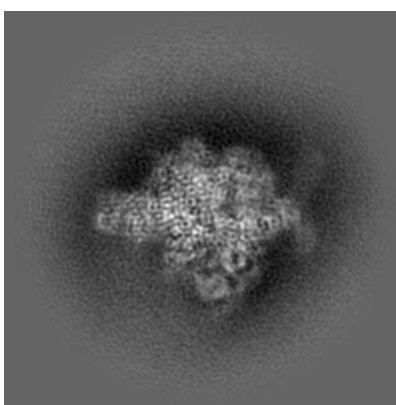
No raw map or half-maps were deposited for this entry and therefore no images, graphs, etc. pertaining to the raw map can be shown.

6.1 Orthogonal projections [i](#)

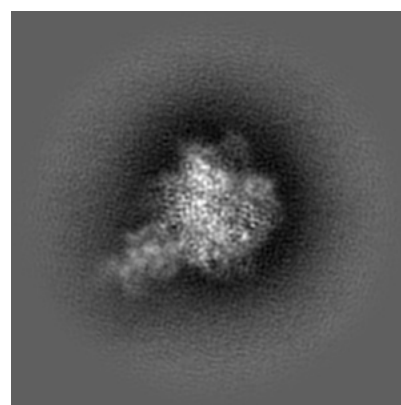
6.1.1 Primary map



X



Y

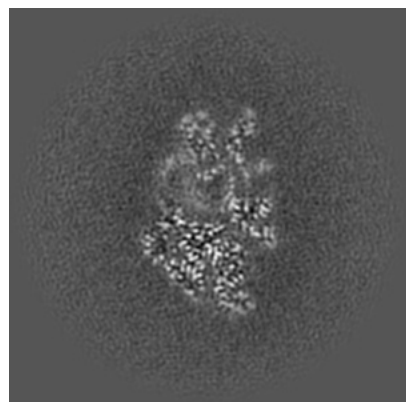


Z

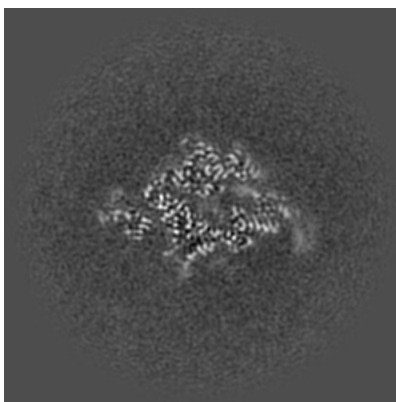
The images above show the map projected in three orthogonal directions.

6.2 Central slices [i](#)

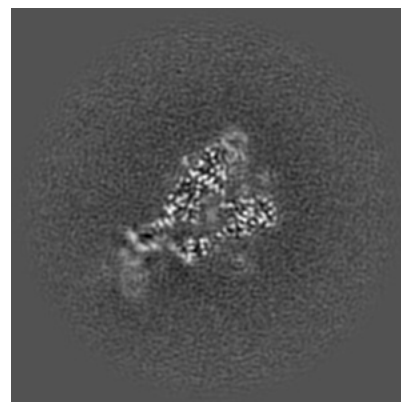
6.2.1 Primary map



X Index: 128



Y Index: 128

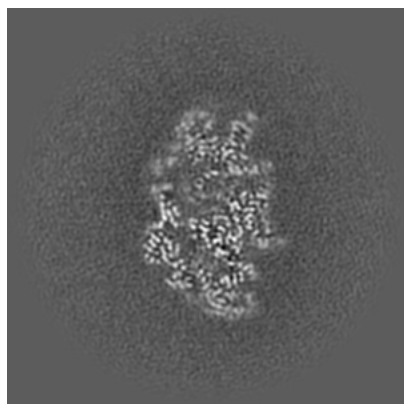


Z Index: 128

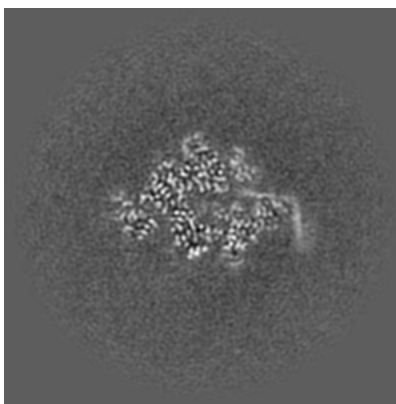
The images above show central slices of the map in three orthogonal directions.

6.3 Largest variance slices [i](#)

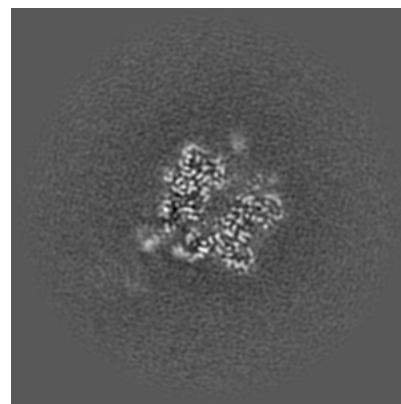
6.3.1 Primary map



X Index: 124



Y Index: 125

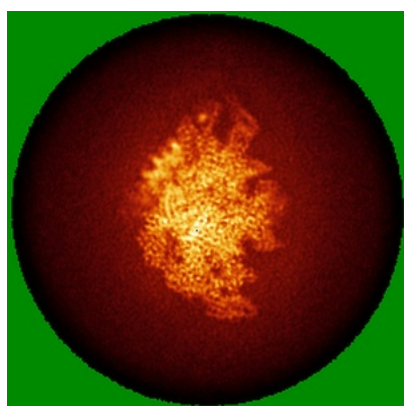


Z Index: 121

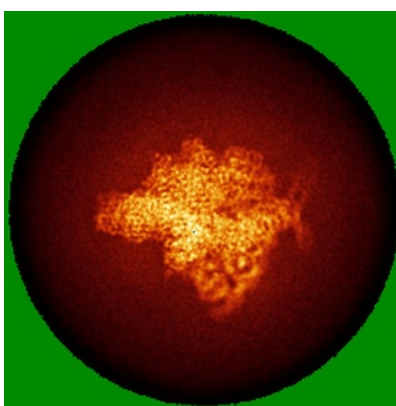
The images above show the largest variance slices of the map in three orthogonal directions.

6.4 Orthogonal standard-deviation projections (False-color) [i](#)

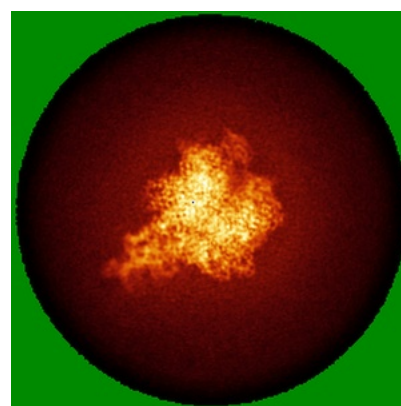
6.4.1 Primary map



X



Y

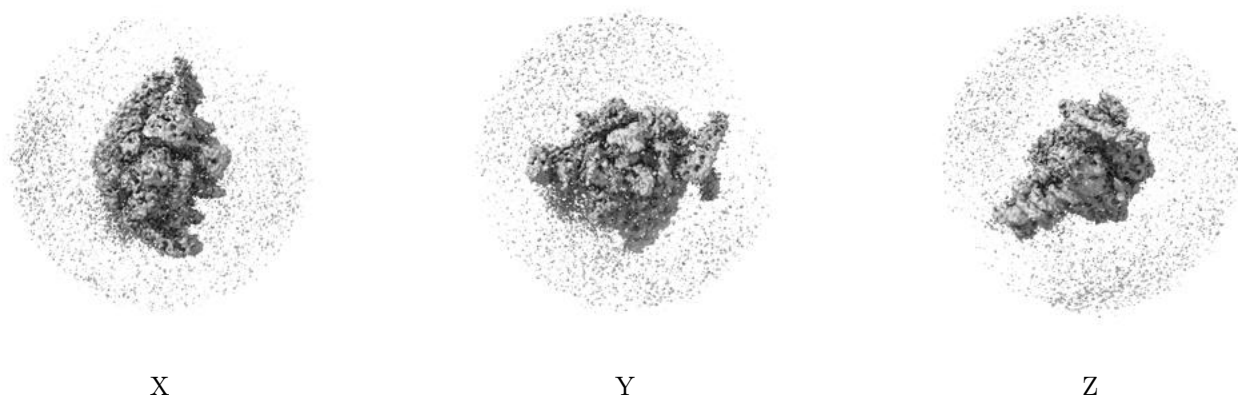


Z

The images above show the map standard deviation projections with false color in three orthogonal directions. Minimum values are shown in green, max in blue, and dark to light orange shades represent small to large values respectively.

6.5 Orthogonal surface views [i](#)

6.5.1 Primary map



The images above show the 3D surface view of the map at the recommended contour level 0.04. These images, in conjunction with the slice images, may facilitate assessment of whether an appropriate contour level has been provided.

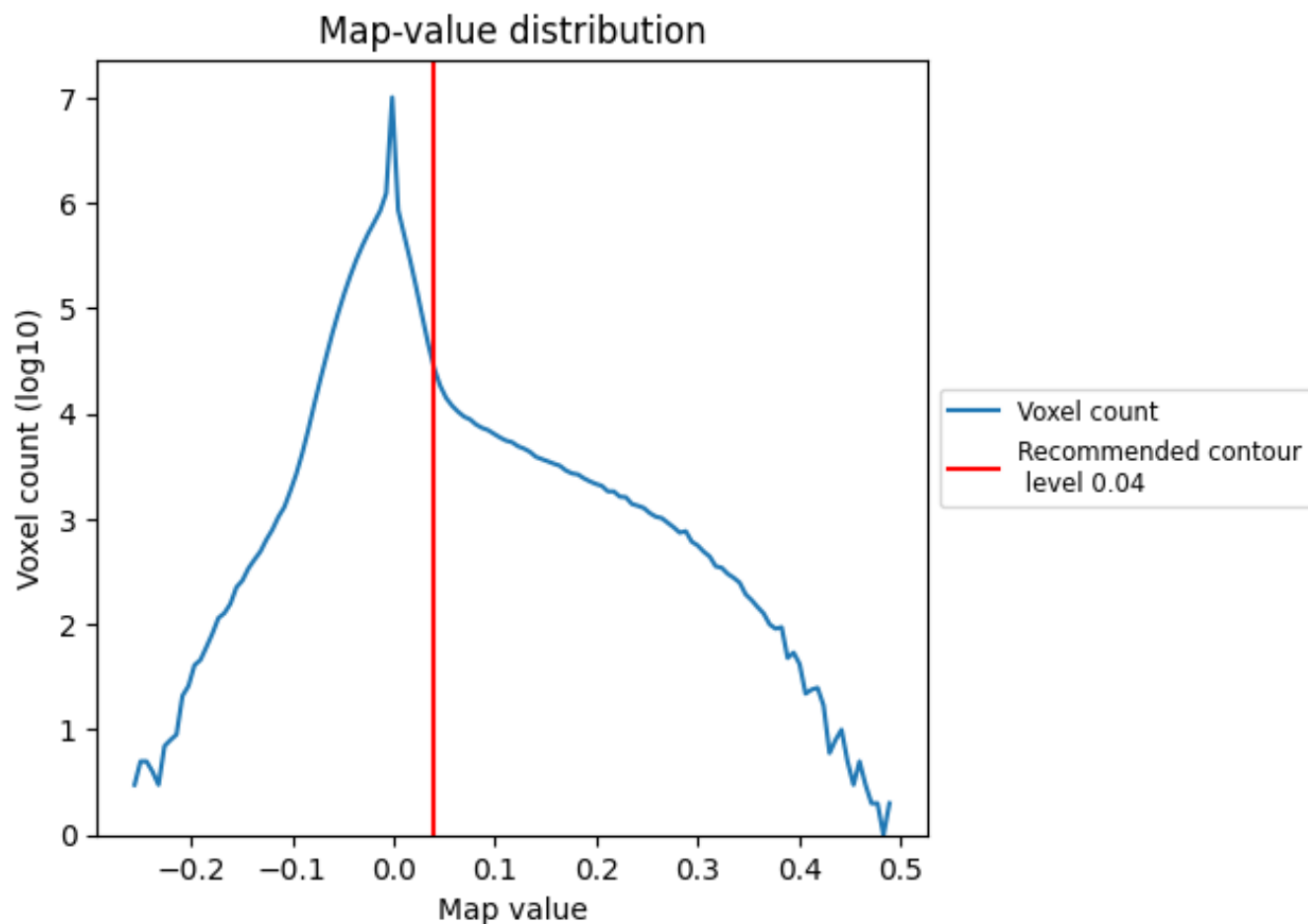
6.6 Mask visualisation [i](#)

This section was not generated. No masks/segmentation were deposited.

7 Map analysis [i](#)

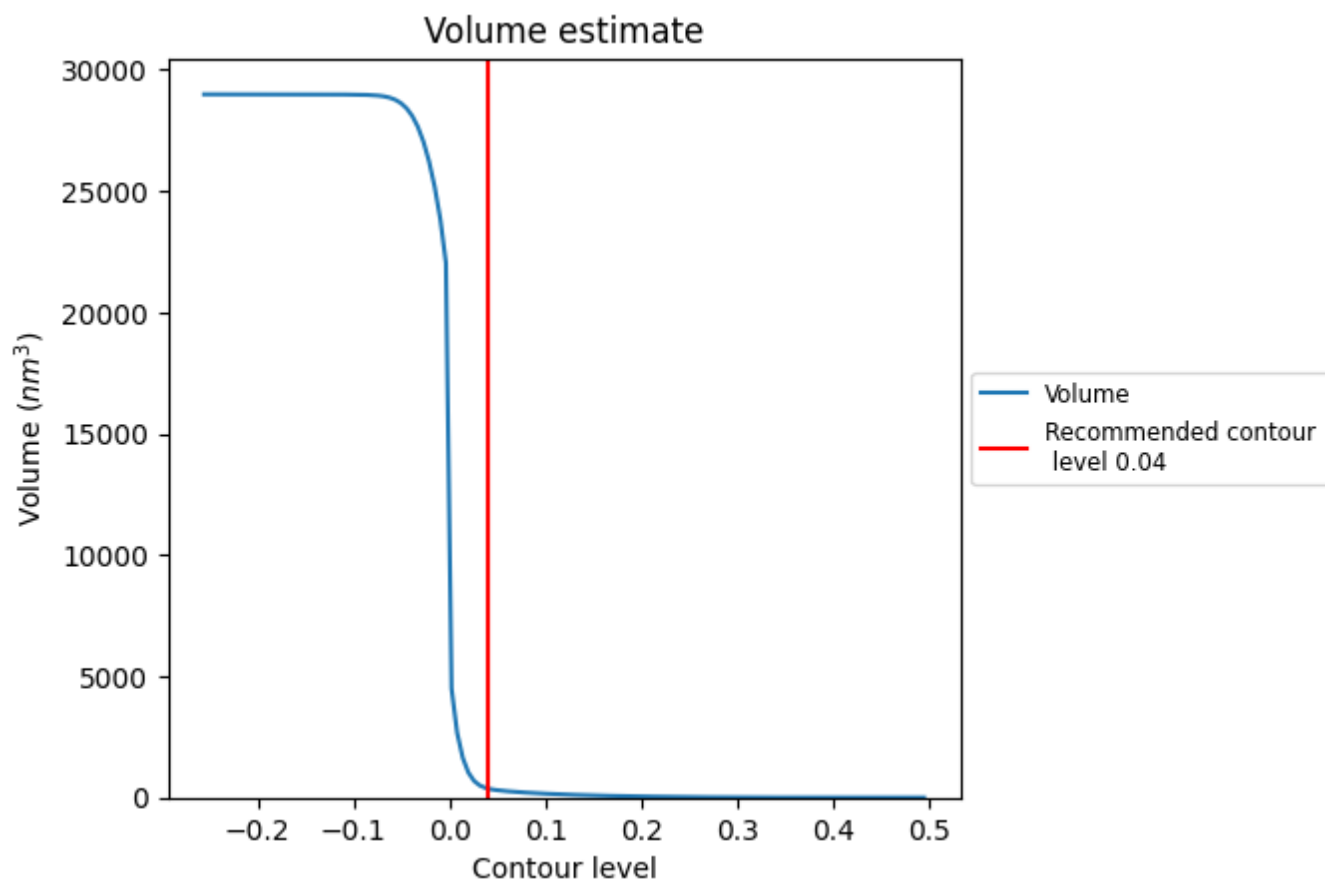
This section contains the results of statistical analysis of the map.

7.1 Map-value distribution [i](#)



The map-value distribution is plotted in 128 intervals along the x-axis. The y-axis is logarithmic. A spike in this graph at zero usually indicates that the volume has been masked.

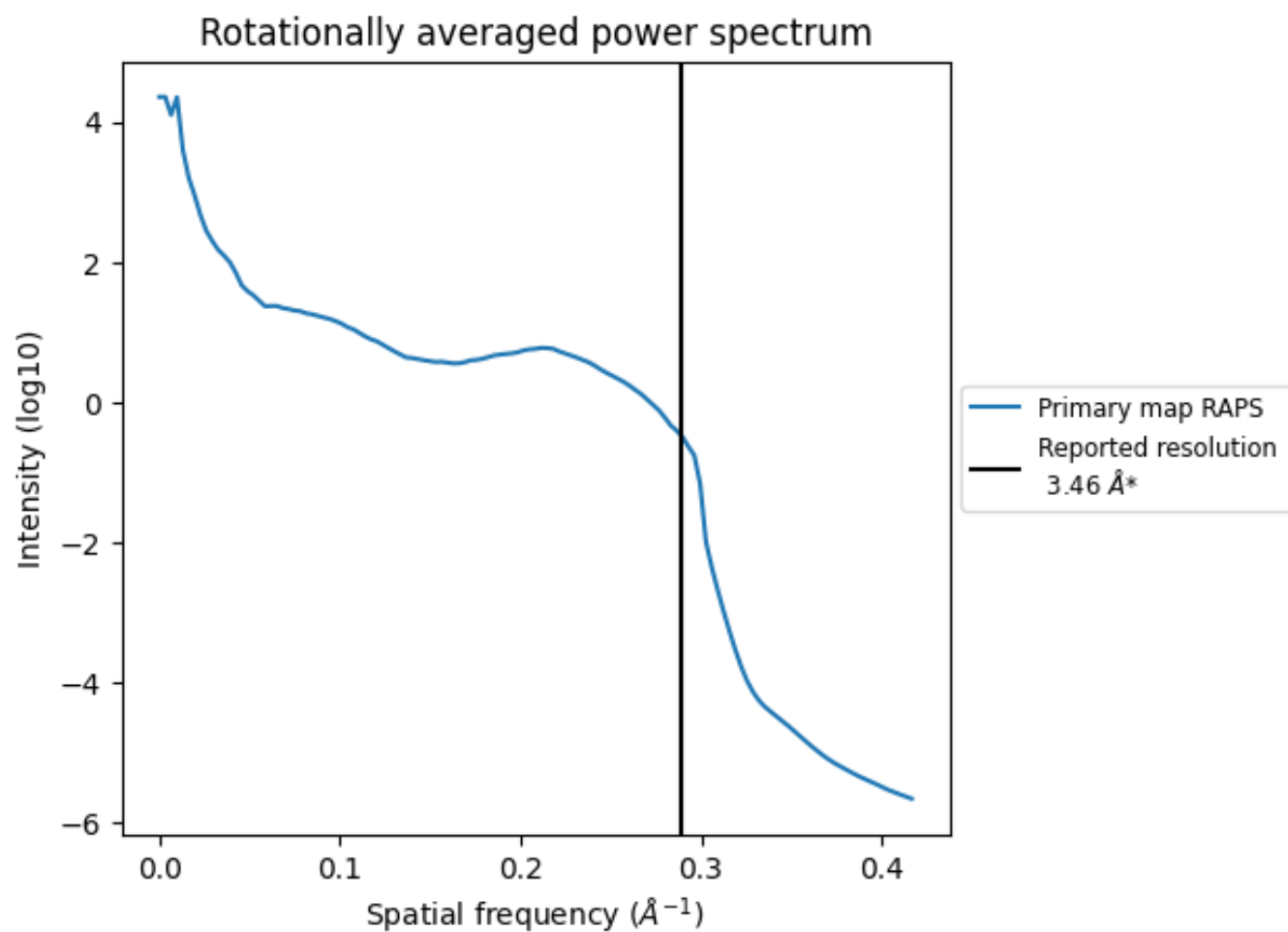
7.2 Volume estimate [i](#)



The volume at the recommended contour level is 378 nm³; this corresponds to an approximate mass of 342 kDa.

The volume estimate graph shows how the enclosed volume varies with the contour level. The recommended contour level is shown as a vertical line and the intersection between the line and the curve gives the volume of the enclosed surface at the given level.

7.3 Rotationally averaged power spectrum ⓘ



*Reported resolution corresponds to spatial frequency of 0.289 Å⁻¹

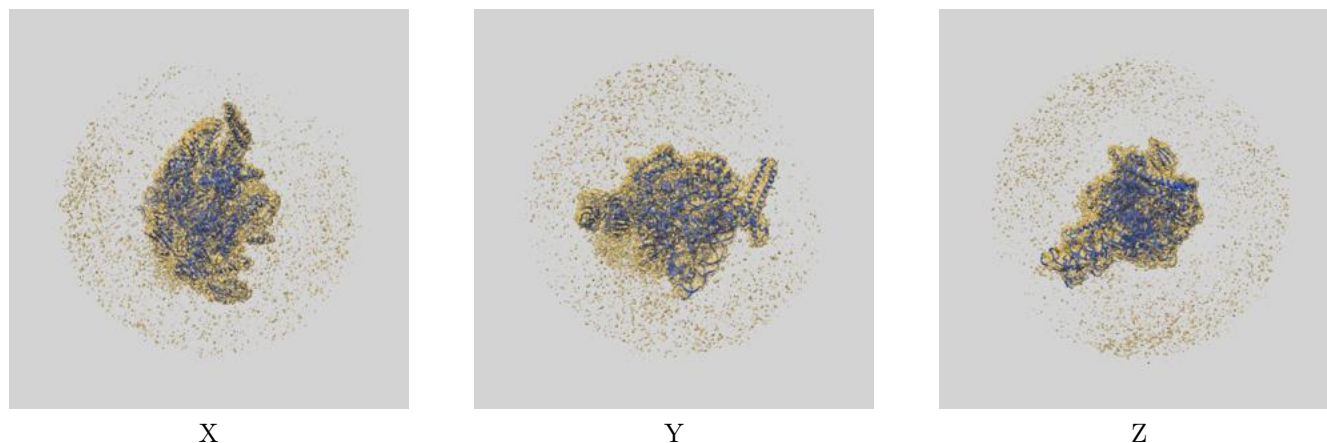
8 Fourier-Shell correlation

This section was not generated. No FSC curve or half-maps provided.

9 Map-model fit [i](#)

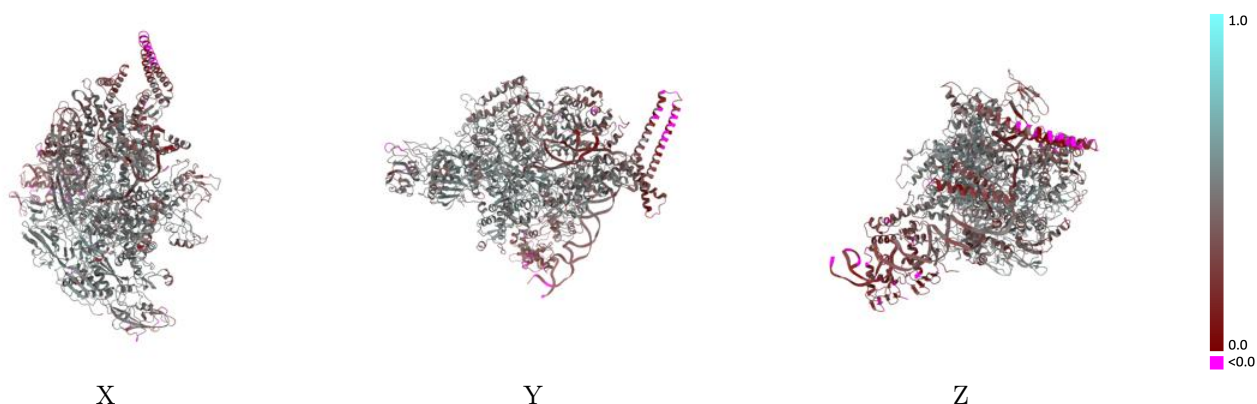
This section contains information regarding the fit between EMDB map EMD-62293 and PDB model 9KET. Per-residue inclusion information can be found in section [3](#) on page [7](#).

9.1 Map-model overlay [i](#)



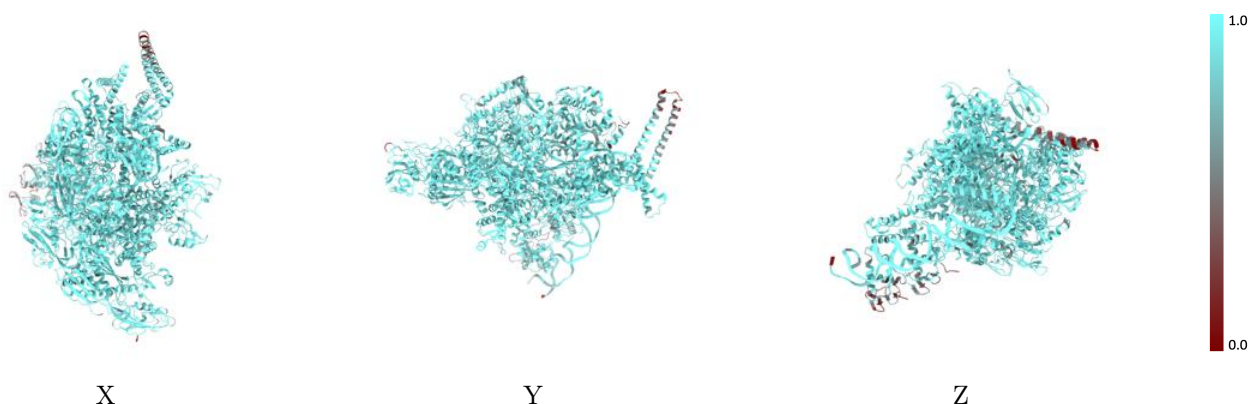
The images above show the 3D surface view of the map at the recommended contour level 0.04 at 50% transparency in yellow overlaid with a ribbon representation of the model coloured in blue. These images allow for the visual assessment of the quality of fit between the atomic model and the map.

9.2 Q-score mapped to coordinate model [i](#)



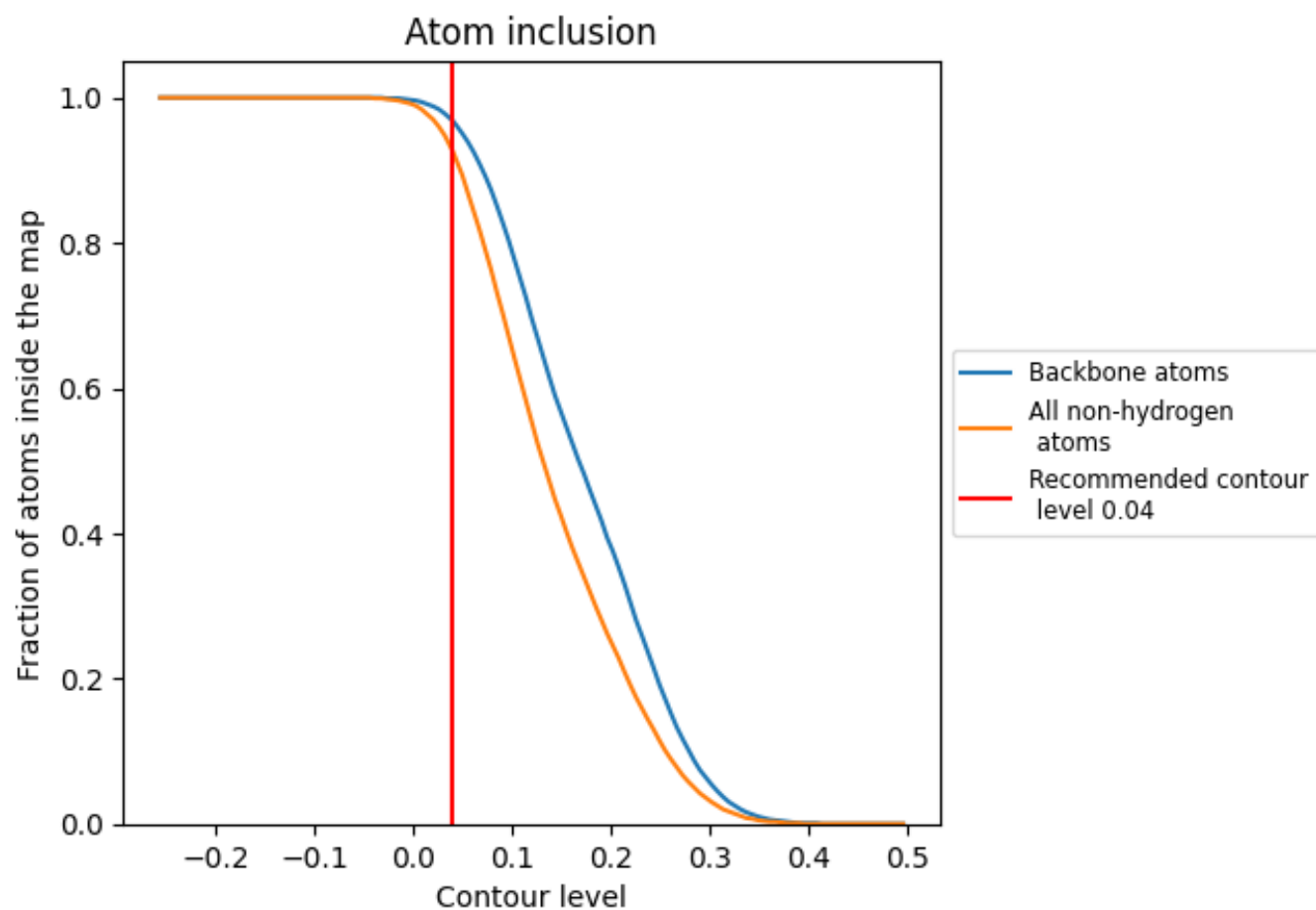
The images above show the model with each residue coloured according to its Q-score. This shows their resolvability in the map with higher Q-score values reflecting better resolvability. Please note: Q-score is calculating the resolvability of atoms, and thus high values are only expected at resolutions at which atoms can be resolved. Low Q-score values may therefore be expected for many entries.

9.3 Atom inclusion mapped to coordinate model [i](#)



The images above show the model with each residue coloured according to its atom inclusion. This shows to what extent they are inside the map at the recommended contour level (0.04).

9.4 Atom inclusion [i](#)



At the recommended contour level, 97% of all backbone atoms, 93% of all non-hydrogen atoms, are inside the map.

9.5 Map-model fit summary ⓘ

The table lists the average atom inclusion at the recommended contour level (0.04) and Q-score for the entire model and for each chain.

Chain	Atom inclusion	Q-score
All	<div></div> 0.9260	<div></div> 0.4190
A	<div></div> 0.9590	<div></div> 0.4900
B	<div></div> 0.9220	<div></div> 0.4290
C	<div></div> 0.9560	<div></div> 0.4630
D	<div></div> 0.9360	<div></div> 0.4490
E	<div></div> 0.9510	<div></div> 0.4710
F	<div></div> 0.9240	<div></div> 0.3470
G	<div></div> 0.8930	<div></div> 0.2730
H	<div></div> 0.9180	<div></div> 0.2600
J	<div></div> 0.7800	<div></div> 0.2710
K	<div></div> 0.5890	<div></div> 0.1610

1.0

0.0

<0.0