



# Full wwPDB X-ray Structure Validation Report ⓘ

Jun 17, 2024 – 04:28 AM EDT

PDB ID : 5KCW  
Title : Crystal Structure of the ER-alpha Ligand-binding Domain (Y537S) in Complex with an N-trifluoroethyl OBHS-N derivative  
Authors : Nwachukwu, J.C.; Srinivasan, S.; Bruno, N.E.; Dharmarajan, V.; Goswami, D.; Kastrati, I.; Novick, S.; Nowak, J.; Zhou, H.B.; Boonmuen, N.; Zhao, Y.; Min, J.; Frasor, J.; Katzenellenbogen, B.S.; Griffin, P.R.; Katzenellenbogen, J.A.; Nettles, K.W.  
Deposited on : 2016-06-07  
Resolution : 1.91 Å(reported)

This is a Full wwPDB X-ray Structure Validation Report for a publicly released PDB entry.

We welcome your comments at [validation@mail.wwpdb.org](mailto:validation@mail.wwpdb.org)

A user guide is available at

<https://www.wwpdb.org/validation/2017/XrayValidationReportHelp>

with specific help available everywhere you see the ⓘ symbol.

The types of validation reports are described at

<http://www.wwpdb.org/validation/2017/FAQs#types>.

---

The following versions of software and data (see [references ⓘ](#)) were used in the production of this report:

MolProbity	:	4.02b-467
Mogul	:	1.8.5 (274361), CSD as541be (2020)
Xtriage (Phenix)	:	1.13
EDS	:	2.37.1
buster-report	:	1.1.7 (2018)
Percentile statistics	:	20191225.v01 (using entries in the PDB archive December 25th 2019)
Refmac	:	5.8.0158
CCP4	:	7.0.044 (Gargrove)
Ideal geometry (proteins)	:	Engh & Huber (2001)

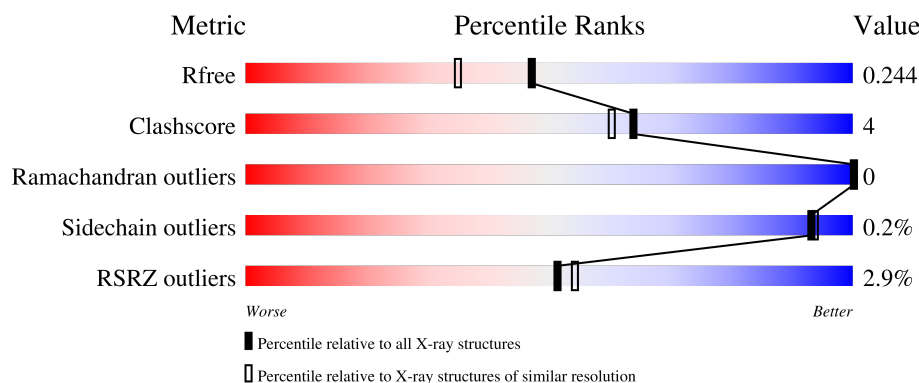
# 1 Overall quality at a glance

The following experimental techniques were used to determine the structure:

*X-RAY DIFFRACTION*

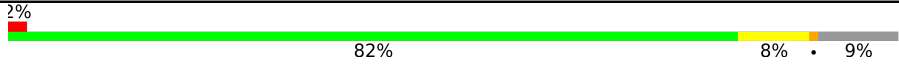


The reported resolution of this entry is 1.91 Å.

Percentile scores (ranging between 0-100) for global validation metrics of the entry are shown in the following graphic. The table shows the number of entries on which the scores are based.



Metric	Whole archive (#Entries)	Similar resolution (#Entries, resolution range(Å))
$R_{free}$	130704	6207 (1.90-1.90)
Clashscore	141614	6847 (1.90-1.90)
Ramachandran outliers	138981	6760 (1.90-1.90)
Sidechain outliers	138945	6760 (1.90-1.90)
RSRZ outliers	127900	6082 (1.90-1.90)

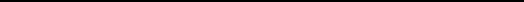
The table below summarises the geometric issues observed across the polymeric chains and their fit to the electron density. The red, orange, yellow and green segments of the lower bar indicate the fraction of residues that contain outliers for  $\geq 3$ , 2, 1 and 0 types of geometric quality criteria respectively. A grey segment represents the fraction of residues that are not modelled. The numeric value for each fraction is indicated below the corresponding segment, with a dot representing fractions  $\leq 5\%$ . The upper red bar (where present) indicates the fraction of residues that have poor fit to the electron density. The numeric value is given above the bar.

Mol	Chain	Length	Quality of chain
1	A	257	
1	B	257	
2	C	14	

*Continued on next page...*

Ideal geometry (DNA, RNA) : Parkinson et al. (1996)  
Validation Pipeline (wwPDB-VP) : 2.37.1

Continued from previous page...

Mol	Chain	Length	Quality of chain
2	D	14	 <p>7% 57% 7% 36%</p>

## 2 Entry composition

There are 4 unique types of molecules in this entry. The entry contains 3962 atoms, of which 0 are hydrogens and 0 are deuteriums.

In the tables below, the ZeroOcc column contains the number of atoms modelled with zero occupancy, the AltConf column contains the number of residues with at least one atom in alternate conformation and the Trace column contains the number of residues modelled with at most 2 atoms.

- Molecule 1 is a protein called Estrogen receptor.

Mol	Chain	Residues	Atoms					ZeroOcc	AltConf	Trace
1	A	233	Total	C	N	O	S	0	1	0
			1801	1154	307	323	17			
1	B	224	Total	C	N	O	S	0	1	0
			1763	1126	303	318	16			

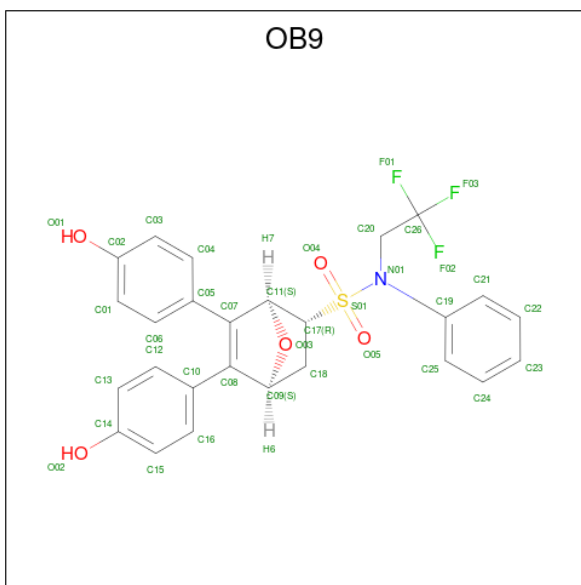
There are 2 discrepancies between the modelled and reference sequences:

Chain	Residue	Modelled	Actual	Comment	Reference
A	537	SER	TYR	engineered mutation	UNP P03372
B	537	SER	TYR	engineered mutation	UNP P03372

- Molecule 2 is a protein called NCOA2.

Mol	Chain	Residues	Atoms				ZeroOcc	AltConf	Trace
2	C	10	Total	C	N	O	0	0	0
			84	54	17	13			
2	D	9	Total	C	N	O	0	0	0
			76	50	16	10			

- Molecule 3 is (1S,2R,4S)-5,6-bis(4-hydroxyphenyl)-N-phenyl-N-(2,2,2-trifluoroethyl)-7-oxabicyclo[2.2.1]hept-5-ene-2-sulfonamide (three-letter code: OB9) (formula: C<sub>26</sub>H<sub>22</sub>F<sub>3</sub>NO<sub>5</sub>S).



Mol	Chain	Residues	Atoms					ZeroOcc	AltConf	
3	A	1	Total 27	C 20	N 1	O 5	S 1	0	0	
3	B	1	Total 36	C 26	F 3	N 1	O 5	S 1	0	1
3	B	1	Total 36	C 26	F 3	N 1	O 5	S 1	0	1

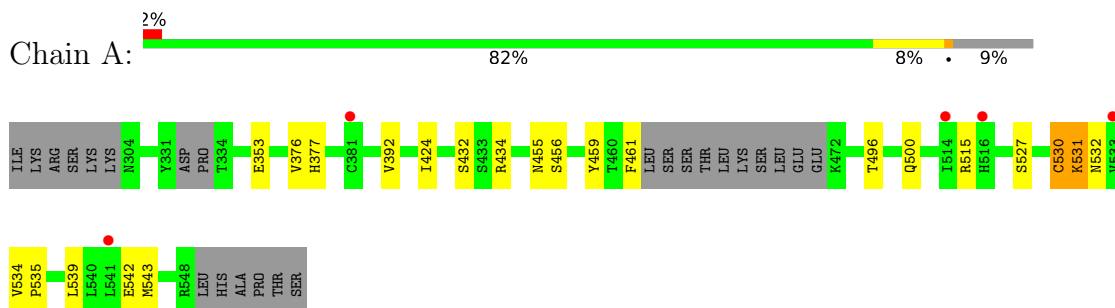
- Molecule 4 is water.

Mol	Chain	Residues	Atoms		ZeroOcc	AltConf
4	A	72	Total	O	0	0
			72	72		
4	B	64	Total	O	0	0
			64	64		
4	C	3	Total	O	0	0
			3	3		

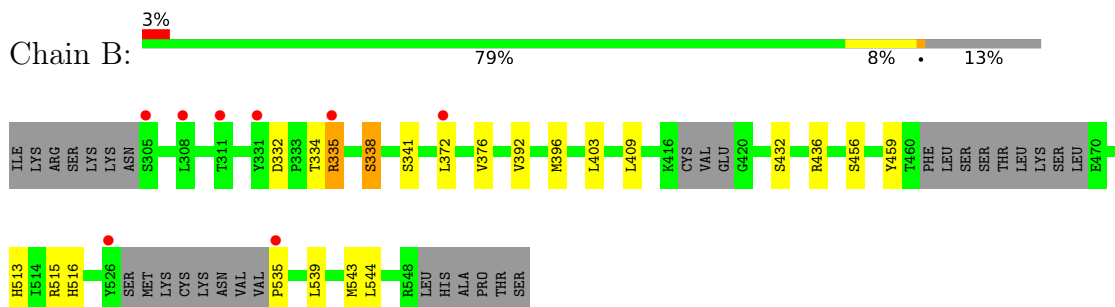
### 3 Residue-property plots [i](#)

These plots are drawn for all protein, RNA, DNA and oligosaccharide chains in the entry. The first graphic for a chain summarises the proportions of the various outlier classes displayed in the second graphic. The second graphic shows the sequence view annotated by issues in geometry and electron density. Residues are color-coded according to the number of geometric quality criteria for which they contain at least one outlier: green = 0, yellow = 1, orange = 2 and red = 3 or more. A red dot above a residue indicates a poor fit to the electron density ( $RSRZ > 2$ ). Stretches of 2 or more consecutive residues without any outlier are shown as a green connector. Residues present in the sample, but not in the model, are shown in grey.

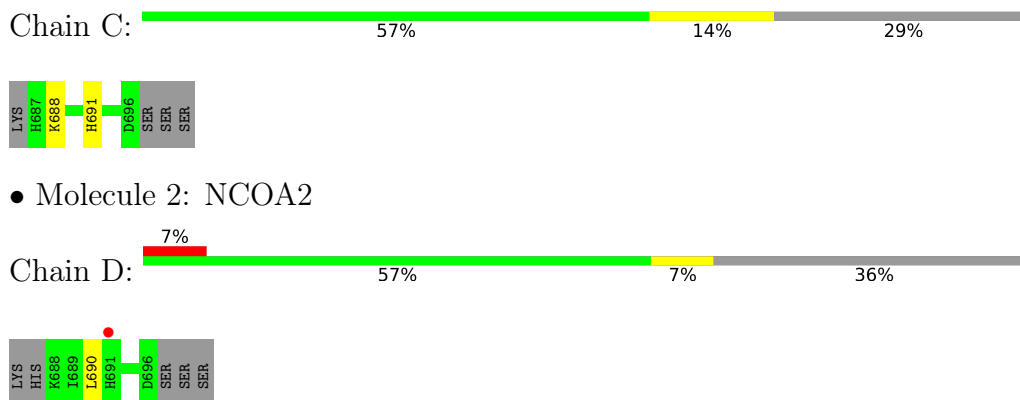
- Molecule 1: Estrogen receptor



- Molecule 1: Estrogen receptor



- Molecule 2: NCOA2



## 4 Data and refinement statistics

Property	Value	Source
Space group	P 1 21 1	Depositor
Cell constants a, b, c, $\alpha$ , $\beta$ , $\gamma$	55.63Å 81.53Å 58.98Å 90.00° 110.93° 90.00°	Depositor
Resolution (Å)	40.80 – 1.91 40.80 – 1.90	Depositor EDS
% Data completeness (in resolution range)	90.9 (40.80-1.91) 90.7 (40.80-1.90)	Depositor EDS
$R_{merge}$	0.06	Depositor
$R_{sym}$	(Not available)	Depositor
$\langle I/\sigma(I) \rangle$ <sup>1</sup>	2.35 (at 1.91Å)	Xtriage
Refinement program	PHENIX 1.9_1690	Depositor
R, $R_{free}$	0.190 , 0.245 0.202 , 0.244	Depositor DCC
$R_{free}$ test set	2010 reflections (5.38%)	wwPDB-VP
Wilson B-factor (Å <sup>2</sup> )	36.8	Xtriage
Anisotropy	0.548	Xtriage
Bulk solvent $k_{sol}$ (e/Å <sup>3</sup> ), $B_{sol}$ (Å <sup>2</sup> )	0.31 , 53.2	EDS
L-test for twinning <sup>2</sup>	$\langle  L  \rangle = 0.49$ , $\langle L^2 \rangle = 0.32$	Xtriage
Estimated twinning fraction	No twinning to report.	Xtriage
$F_o, F_c$ correlation	0.96	EDS
Total number of atoms	3962	wwPDB-VP
Average B, all atoms (Å <sup>2</sup> )	56.0	wwPDB-VP

Xtriage's analysis on translational NCS is as follows: *The largest off-origin peak in the Patterson function is 6.56% of the height of the origin peak. No significant pseudotranslation is detected.*

<sup>1</sup>Intensities estimated from amplitudes.

<sup>2</sup>Theoretical values of  $\langle |L| \rangle$ ,  $\langle L^2 \rangle$  for acentric reflections are 0.5, 0.333 respectively for untwinned datasets, and 0.375, 0.2 for perfectly twinned datasets.

## 5 Model quality

### 5.1 Standard geometry

Bond lengths and bond angles in the following residue types are not validated in this section: OB9

The Z score for a bond length (or angle) is the number of standard deviations the observed value is removed from the expected value. A bond length (or angle) with  $|Z| > 5$  is considered an outlier worth inspection. RMSZ is the root-mean-square of all Z scores of the bond lengths (or angles).

Mol	Chain	Bond lengths		Bond angles	
		RMSZ	$\# Z  > 5$	RMSZ	$\# Z  > 5$
1	A	0.46	0/1836	0.52	0/2487
1	B	0.56	0/1795	0.61	3/2429 (0.1%)
2	C	0.56	0/84	0.54	0/111
2	D	0.45	0/76	0.62	0/100
All	All	0.51	0/3791	0.56	3/5127 (0.1%)

Chiral center outliers are detected by calculating the chiral volume of a chiral center and verifying if the center is modelled as a planar moiety or with the opposite hand. A planarity outlier is detected by checking planarity of atoms in a peptide group, atoms in a mainchain group or atoms of a sidechain that are expected to be planar.

Mol	Chain	#Chirality outliers	#Planarity outliers
1	A	0	2
1	B	0	2
All	All	0	4

There are no bond length outliers.

All (3) bond angle outliers are listed below:

Mol	Chain	Res	Type	Atoms	Z	Observed(°)	Ideal(°)
1	B	372	LEU	CA-CB-CG	5.36	127.62	115.30
1	B	335	ARG	C-N-CD	5.12	139.14	128.40
1	B	332	ASP	C-N-CD	5.08	139.08	128.40

There are no chirality outliers.

All (4) planarity outliers are listed below:

Mol	Chain	Res	Type	Group
1	A	530	CYS	Peptide

*Continued on next page...*



*Continued from previous page...*

Mol	Chain	Res	Type	Group
1	A	531	LYS	Peptide
1	B	338	SER	Peptide
1	B	535	PRO	Peptide

## 5.2 Too-close contacts

In the following table, the Non-H and H(model) columns list the number of non-hydrogen atoms and hydrogen atoms in the chain respectively. The H(added) column lists the number of hydrogen atoms added and optimized by MolProbity. The Clashes column lists the number of clashes within the asymmetric unit, whereas Symm-Clashes lists symmetry-related clashes.

Mol	Chain	Non-H	H(model)	H(added)	Clashes	Symm-Clashes
1	A	1801	0	1792	18	0
1	B	1763	0	1759	16	0
2	C	84	0	90	4	0
2	D	76	0	86	1	0
3	A	27	0	0	2	0
3	B	72	0	0	0	0
4	A	72	0	0	0	1
4	B	64	0	0	0	1
4	C	3	0	0	0	0
All	All	3962	0	3727	32	1

The all-atom clashscore is defined as the number of clashes found per 1000 atoms (including hydrogen atoms). The all-atom clashscore for this structure is 4.

All (32) close contacts within the same asymmetric unit are listed below, sorted by their clash magnitude.

Atom-1	Atom-2	Interatomic distance (Å)	Clash overlap (Å)
1:B:338:SER:HB3	1:B:341:SER:H	1.49	0.76
1:A:496:THR:O	1:A:500:GLN:HG3	1.86	0.75
1:A:531:LYS:O	1:A:532:ASN:HB2	1.87	0.72
1:B:396:MET:O	1:B:436:ARG:NH2	2.22	0.67
1:B:376:VAL:HG13	2:D:690:LEU:HD23	1.88	0.56
1:A:376:VAL:HG21	2:C:691:HIS:CD2	2.41	0.55
1:A:456:SER:HA	1:A:515:ARG:NH2	2.23	0.53
1:A:434:ARG:HD3	1:B:459:TYR:HE1	1.74	0.53
1:A:542:GLU:OE2	2:C:688:LYS:HB2	2.10	0.51
1:A:424:ILE:HG21	3:A:601:OB9:O04	2.11	0.51
1:B:392:VAL:HG13	1:B:432:SER:HA	1.91	0.51

*Continued on next page...*

Continued from previous page...

Atom-1	Atom-2	Interatomic distance (Å)	Clash overlap (Å)
1:A:353:GLU:OE1	3:A:601:OB9:O02	2.29	0.51
1:B:513[A]:HIS:O	1:B:516:HIS:HB3	2.14	0.47
1:A:527:SER:O	1:A:530:CYS:C	2.53	0.47
1:B:335:ARG:NH1	1:B:341:SER:HB3	2.30	0.46
1:A:455:ASN:O	1:B:513[B]:HIS:HE1	1.98	0.46
1:A:456:SER:HA	1:A:515:ARG:HH22	1.80	0.46
1:A:534:VAL:HG22	1:A:535:PRO:N	2.31	0.46
1:A:539:LEU:O	1:A:543:MET:HG2	2.16	0.46
1:B:456:SER:HA	1:B:515:ARG:NH2	2.31	0.45
1:B:403:LEU:HD13	1:B:409:LEU:HD13	1.99	0.45
1:A:459:TYR:CD1	1:B:513[B]:HIS:HD2	2.35	0.43
1:A:459:TYR:CD1	1:B:513[B]:HIS:CD2	2.96	0.43
2:C:688:LYS:CG	2:C:691:HIS:CE1	3.02	0.43
1:A:377:HIS:CD2	1:A:461:PHE:CE1	3.07	0.42
1:A:392:VAL:HG13	1:A:432:SER:HA	2.01	0.42
1:B:539:LEU:O	1:B:543:MET:HG3	2.20	0.42
1:B:513[B]:HIS:O	1:B:516:HIS:HB3	2.19	0.42
1:B:396:MET:O	1:B:436:ARG:HD3	2.21	0.41
1:B:334:THR:O	1:B:335:ARG:C	2.58	0.40
2:C:688:LYS:HG3	2:C:691:HIS:ND1	2.36	0.40
1:A:534:VAL:CG2	1:A:535:PRO:N	2.84	0.40

All (1) symmetry-related close contacts are listed below. The label for Atom-2 includes the symmetry operator and encoded unit-cell translations to be applied.

Atom-1	Atom-2	Interatomic distance (Å)	Clash overlap (Å)
4:A:732:HOH:O	4:B:762:HOH:O[1_556]	2.18	0.02

## 5.3 Torsion angles [i](#)

### 5.3.1 Protein backbone [i](#)

In the following table, the Percentiles column shows the percent Ramachandran outliers of the chain as a percentile score with respect to all X-ray entries followed by that with respect to entries of similar resolution.

The Analysed column shows the number of residues for which the backbone conformation was analysed, and the total number of residues.

Mol	Chain	Analysed	Favoured	Allowed	Outliers	Percentiles	
1	A	228/257 (89%)	224 (98%)	4 (2%)	0	100	100
1	B	217/257 (84%)	216 (100%)	1 (0%)	0	100	100
2	C	8/14 (57%)	8 (100%)	0	0	100	100
2	D	7/14 (50%)	7 (100%)	0	0	100	100
All	All	460/542 (85%)	455 (99%)	5 (1%)	0	100	100

There are no Ramachandran outliers to report.

### 5.3.2 Protein sidechains ⓘ

In the following table, the Percentiles column shows the percent sidechain outliers of the chain as a percentile score with respect to all X-ray entries followed by that with respect to entries of similar resolution.

The Analysed column shows the number of residues for which the sidechain conformation was analysed, and the total number of residues.

Mol	Chain	Analysed	Rotameric	Outliers	Percentiles	
1	A	194/232 (84%)	194 (100%)	0	100	100
1	B	192/232 (83%)	191 (100%)	1 (0%)	88	89
2	C	9/14 (64%)	9 (100%)	0	100	100
2	D	8/14 (57%)	8 (100%)	0	100	100
All	All	403/492 (82%)	402 (100%)	1 (0%)	93	94

All (1) residues with a non-rotameric sidechain are listed below:

Mol	Chain	Res	Type
1	B	544	LEU

Sometimes sidechains can be flipped to improve hydrogen bonding and reduce clashes. There are no such sidechains identified.

### 5.3.3 RNA ⓘ

There are no RNA molecules in this entry.

## 5.4 Non-standard residues in protein, DNA, RNA chains [i](#)

There are no non-standard protein/DNA/RNA residues in this entry.

## 5.5 Carbohydrates [i](#)

There are no monosaccharides in this entry.

## 5.6 Ligand geometry [i](#)

3 ligands are modelled in this entry.

In the following table, the Counts columns list the number of bonds (or angles) for which Mogul statistics could be retrieved, the number of bonds (or angles) that are observed in the model and the number of bonds (or angles) that are defined in the Chemical Component Dictionary. The Link column lists molecule types, if any, to which the group is linked. The Z score for a bond length (or angle) is the number of standard deviations the observed value is removed from the expected value. A bond length (or angle) with  $|Z| > 2$  is considered an outlier worth inspection. RMSZ is the root-mean-square of all Z scores of the bond lengths (or angles).

Mol	Type	Chain	Res	Link	Bond lengths			Bond angles		
					Counts	RMSZ	# $ Z  > 2$	Counts	RMSZ	# $ Z  > 2$
3	OB9	A	601	-	27,30,40	4.17	19 (70%)	35,46,61	4.12	12 (34%)
3	OB9	B	601[A]	-	37,40,40	4.13	26 (70%)	48,61,61	2.84	22 (45%)
3	OB9	B	602[B]	-	37,40,40	4.09	26 (70%)	48,61,61	2.57	21 (43%)

In the following table, the Chirals column lists the number of chiral outliers, the number of chiral centers analysed, the number of these observed in the model and the number defined in the Chemical Component Dictionary. Similar counts are reported in the Torsion and Rings columns. '-' means no outliers of that kind were identified.

Mol	Type	Chain	Res	Link	Chirals	Torsions	Rings
3	OB9	A	601	-	-	6/18/44/53	0/5/4/5
3	OB9	B	601[A]	-	-	3/27/53/53	0/6/5/5
3	OB9	B	602[B]	-	-	2/27/53/53	0/6/5/5

All (71) bond length outliers are listed below:

Mol	Chain	Res	Type	Atoms	Z	Observed(Å)	Ideal(Å)
3	B	601[A]	OB9	C19-N01	-13.38	1.26	1.44
3	B	602[B]	OB9	C19-N01	-13.28	1.26	1.44
3	A	601	OB9	C19-N01	-13.19	1.27	1.47

*Continued on next page...*

*Continued from previous page...*

Mol	Chain	Res	Type	Atoms	Z	Observed(Å)	Ideal(Å)
3	B	601[A]	OB9	C05-C07	-8.05	1.33	1.48
3	A	601	OB9	C05-C07	-7.95	1.33	1.48
3	B	602[B]	OB9	C05-C07	-7.90	1.33	1.48
3	B	601[A]	OB9	O05-S01	-7.20	1.37	1.43
3	A	601	OB9	C10-C08	-7.03	1.35	1.48
3	B	602[B]	OB9	O05-S01	-7.02	1.37	1.43
3	B	601[A]	OB9	C10-C08	-6.97	1.35	1.48
3	B	602[B]	OB9	C10-C08	-6.91	1.35	1.48
3	B	602[B]	OB9	O04-S01	-5.56	1.39	1.43
3	B	601[A]	OB9	O04-S01	-5.35	1.39	1.43
3	B	602[B]	OB9	O03-C11	-4.87	1.37	1.43
3	B	601[A]	OB9	O03-C11	-4.71	1.37	1.43
3	A	601	OB9	O03-C11	-4.66	1.37	1.43
3	B	602[B]	OB9	C06-C05	-4.17	1.32	1.39
3	B	601[A]	OB9	C06-C05	-4.14	1.32	1.39
3	B	602[B]	OB9	C01-C02	-3.98	1.31	1.38
3	B	601[A]	OB9	C01-C02	-3.98	1.31	1.38
3	B	601[A]	OB9	C04-C05	-3.89	1.32	1.39
3	B	602[B]	OB9	C04-C05	-3.88	1.32	1.39
3	B	601[A]	OB9	C06-C01	-3.83	1.31	1.38
3	B	602[B]	OB9	C06-C01	-3.77	1.31	1.38
3	A	601	OB9	C06-C05	-3.75	1.32	1.39
3	B	601[A]	OB9	C21-C19	-3.74	1.31	1.39
3	A	601	OB9	C13-C14	-3.72	1.31	1.38
3	B	601[A]	OB9	C24-C25	-3.60	1.31	1.38
3	A	601	OB9	C16-C10	-3.54	1.33	1.39
3	B	602[B]	OB9	C03-C02	-3.51	1.32	1.38
3	A	601	OB9	C04-C05	-3.50	1.33	1.39
3	A	601	OB9	O05-S01	-3.50	1.40	1.43
3	B	601[A]	OB9	C03-C02	-3.47	1.32	1.38
3	A	601	OB9	C03-C02	-3.45	1.32	1.38
3	B	602[B]	OB9	C20-C26	-3.40	1.45	1.50
3	B	602[B]	OB9	C25-C19	-3.39	1.32	1.39
3	B	601[A]	OB9	C04-C03	-3.34	1.32	1.38
3	B	601[A]	OB9	C13-C14	-3.32	1.32	1.38
3	A	601	OB9	C04-C03	-3.31	1.32	1.38
3	B	602[B]	OB9	C04-C03	-3.31	1.32	1.38
3	B	601[A]	OB9	C22-C21	-3.30	1.32	1.38
3	B	601[A]	OB9	O03-C09	-3.29	1.37	1.44
3	A	601	OB9	C01-C02	-3.28	1.32	1.38
3	B	602[B]	OB9	C13-C14	-3.28	1.32	1.38
3	B	602[B]	OB9	O03-C09	-3.27	1.37	1.44

*Continued on next page...*

*Continued from previous page...*

Mol	Chain	Res	Type	Atoms	Z	Observed(Å)	Ideal(Å)
3	B	601[A]	OB9	C25-C19	-3.16	1.33	1.39
3	B	602[B]	OB9	C16-C10	-3.13	1.33	1.39
3	B	601[A]	OB9	C16-C10	-3.10	1.34	1.39
3	B	602[B]	OB9	C22-C21	-3.10	1.32	1.38
3	B	601[A]	OB9	C13-C12	-3.05	1.33	1.38
3	A	601	OB9	C06-C01	-3.00	1.33	1.38
3	B	601[A]	OB9	C15-C14	-2.99	1.33	1.38
3	B	602[B]	OB9	C15-C14	-2.98	1.33	1.38
3	A	601	OB9	C12-C10	-2.98	1.34	1.39
3	B	602[B]	OB9	C13-C12	-2.98	1.33	1.38
3	B	601[A]	OB9	C12-C10	-2.95	1.34	1.39
3	A	601	OB9	C16-C15	-2.93	1.33	1.38
3	B	602[B]	OB9	C12-C10	-2.89	1.34	1.39
3	B	601[A]	OB9	C16-C15	-2.84	1.33	1.38
3	B	602[B]	OB9	C21-C19	-2.80	1.33	1.39
3	B	602[B]	OB9	C16-C15	-2.78	1.33	1.38
3	B	602[B]	OB9	C24-C25	-2.72	1.33	1.38
3	B	601[A]	OB9	C20-C26	-2.71	1.46	1.50
3	B	601[A]	OB9	C23-C22	-2.67	1.30	1.38
3	B	601[A]	OB9	C24-C23	-2.61	1.31	1.38
3	A	601	OB9	C15-C14	-2.60	1.34	1.38
3	A	601	OB9	O03-C09	-2.58	1.38	1.44
3	A	601	OB9	C13-C12	-2.56	1.34	1.38
3	B	602[B]	OB9	C24-C23	-2.40	1.31	1.38
3	A	601	OB9	C20-N01	2.35	1.50	1.47
3	B	602[B]	OB9	C23-C22	-2.34	1.31	1.38

All (55) bond angle outliers are listed below:

Mol	Chain	Res	Type	Atoms	Z	Observed(°)	Ideal(°)
3	A	601	OB9	O04-S01-N01	17.77	117.08	107.17
3	A	601	OB9	O05-S01-N01	13.82	114.87	107.17
3	B	601[A]	OB9	O04-S01-N01	11.03	121.07	107.56
3	B	602[B]	OB9	O04-S01-N01	10.62	120.57	107.56
3	B	601[A]	OB9	C26-C20-N01	7.82	119.74	112.14
3	B	602[B]	OB9	O05-S01-N01	6.25	115.21	107.56
3	B	601[A]	OB9	C21-C19-N01	5.39	128.21	120.16
3	B	601[A]	OB9	O05-S01-O04	-4.97	116.02	119.22
3	B	601[A]	OB9	C05-C07-C08	3.42	137.67	128.81
3	B	602[B]	OB9	C21-C19-N01	3.38	125.21	120.16
3	B	602[B]	OB9	C16-C10-C12	-3.35	113.82	118.59
3	B	602[B]	OB9	C05-C07-C08	3.30	137.34	128.81

*Continued on next page...*

*Continued from previous page...*

Mol	Chain	Res	Type	Atoms	Z	Observed(°)	Ideal(°)
3	B	601[A]	OB9	O03-C09-C18	-3.28	98.18	104.64
3	B	601[A]	OB9	C16-C10-C12	-3.26	113.94	118.59
3	B	602[B]	OB9	C22-C21-C19	3.10	123.73	119.68
3	B	601[A]	OB9	C24-C25-C19	3.09	123.72	119.68
3	B	602[B]	OB9	O03-C09-C18	-3.09	98.56	104.64
3	B	602[B]	OB9	C01-C06-C05	2.93	124.19	120.78
3	B	602[B]	OB9	C06-C05-C04	-2.87	114.50	118.59
3	B	601[A]	OB9	C01-C06-C05	2.84	124.08	120.78
3	B	602[B]	OB9	C12-C10-C08	2.78	124.50	120.91
3	B	601[A]	OB9	C06-C05-C04	-2.74	114.68	118.59
3	A	601	OB9	C10-C08-C07	2.73	135.87	128.81
3	A	601	OB9	C16-C10-C12	-2.72	114.71	118.59
3	B	601[A]	OB9	C12-C10-C08	2.72	124.43	120.91
3	B	602[B]	OB9	C20-N01-C19	2.66	121.14	117.59
3	B	601[A]	OB9	C22-C21-C19	2.61	123.10	119.68
3	A	601	OB9	C05-C07-C08	2.59	135.50	128.81
3	B	601[A]	OB9	C09-C08-C07	-2.56	101.61	106.97
3	A	601	OB9	C13-C12-C10	2.51	123.70	120.78
3	B	602[B]	OB9	C25-C19-C21	-2.50	114.07	119.16
3	B	602[B]	OB9	C09-C08-C07	-2.45	101.83	106.97
3	B	601[A]	OB9	C10-C08-C07	2.45	135.14	128.81
3	B	601[A]	OB9	C25-C19-C21	-2.44	114.20	119.16
3	A	601	OB9	C16-C15-C14	2.42	122.53	119.88
3	B	602[B]	OB9	C10-C08-C07	2.42	135.07	128.81
3	B	601[A]	OB9	O03-C09-C08	2.40	105.33	101.99
3	B	602[B]	OB9	C04-C05-C07	2.37	123.97	120.91
3	B	602[B]	OB9	C24-C25-C19	2.34	122.75	119.68
3	B	602[B]	OB9	C15-C16-C10	2.32	123.48	120.78
3	B	601[A]	OB9	C04-C05-C07	2.32	123.91	120.91
3	A	601	OB9	C06-C05-C04	-2.30	115.31	118.59
3	A	601	OB9	C06-C05-C07	2.26	123.84	120.91
3	B	601[A]	OB9	C15-C16-C10	2.23	123.37	120.78
3	B	602[B]	OB9	O03-C09-C08	2.22	105.09	101.99
3	A	601	OB9	C12-C10-C08	2.22	123.78	120.91
3	B	601[A]	OB9	C05-C07-C11	-2.16	117.72	121.27
3	B	602[B]	OB9	C04-C03-C02	2.14	122.23	119.88
3	B	601[A]	OB9	C04-C03-C02	2.12	122.20	119.88
3	B	602[B]	OB9	C15-C14-C13	-2.09	116.24	119.77
3	A	601	OB9	O05-S01-O04	2.09	120.56	119.22
3	B	601[A]	OB9	O05-S01-N01	2.07	110.10	107.56
3	B	601[A]	OB9	C15-C14-C13	-2.07	116.28	119.77
3	A	601	OB9	O03-C09-C18	-2.07	100.57	104.64

*Continued on next page...*

*Continued from previous page...*

Mol	Chain	Res	Type	Atoms	Z	Observed(°)	Ideal(°)
3	B	602[B]	OB9	C13-C12-C10	2.03	123.14	120.78

There are no chirality outliers.

All (11) torsion outliers are listed below:

Mol	Chain	Res	Type	Atoms
3	A	601	OB9	C11-C17-S01-O04
3	A	601	OB9	C11-C17-S01-O05
3	A	601	OB9	C18-C17-S01-O04
3	A	601	OB9	C18-C17-S01-O05
3	A	601	OB9	C19-N01-S01-C17
3	A	601	OB9	C19-N01-S01-O04
3	B	602[B]	OB9	C20-N01-S01-O04
3	B	601[A]	OB9	C25-C19-N01-S01
3	B	601[A]	OB9	C21-C19-N01-S01
3	B	602[B]	OB9	C20-N01-S01-C17
3	B	601[A]	OB9	C19-N01-S01-C17

There are no ring outliers.

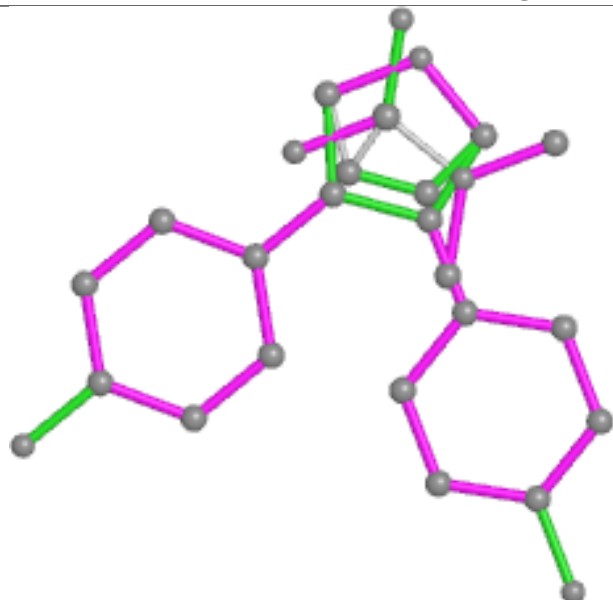
1 monomer is involved in 2 short contacts:

Mol	Chain	Res	Type	Clashes	Symm-Clashes
3	A	601	OB9	2	0

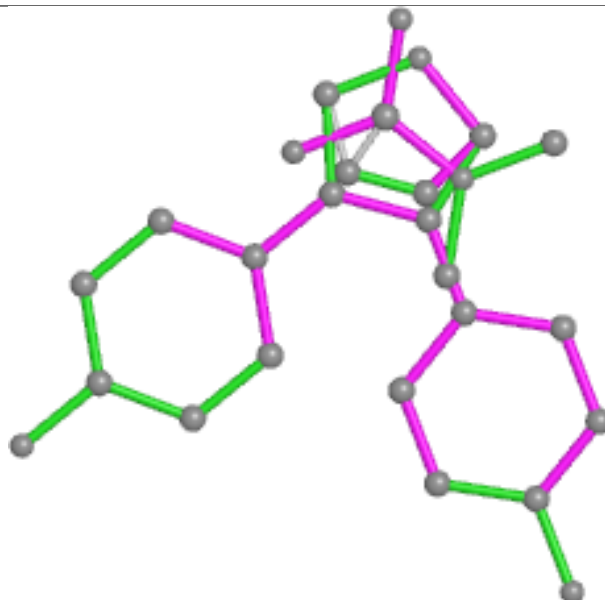
The following is a two-dimensional graphical depiction of Mogul quality analysis of bond lengths, bond angles, torsion angles, and ring geometry for all instances of the Ligand of Interest. In addition, ligands with molecular weight > 250 and outliers as shown on the validation Tables will also be included. For torsion angles, if less than 5% of the Mogul distribution of torsion angles is within 10 degrees of the torsion angle in question, then that torsion angle is considered an outlier. Any bond that is central to one or more torsion angles identified as an outlier by Mogul will be highlighted in the graph. For rings, the root-mean-square deviation (RMSD) between the ring in question and similar rings identified by Mogul is calculated over all ring torsion angles. If the average RMSD is greater than 60 degrees and the minimal RMSD between the ring in question and any Mogul-identified rings is also greater than 60 degrees, then that ring is considered an outlier. The outliers are highlighted in purple. The color gray indicates Mogul did not find sufficient equivalents in the CSD to analyse the geometry.



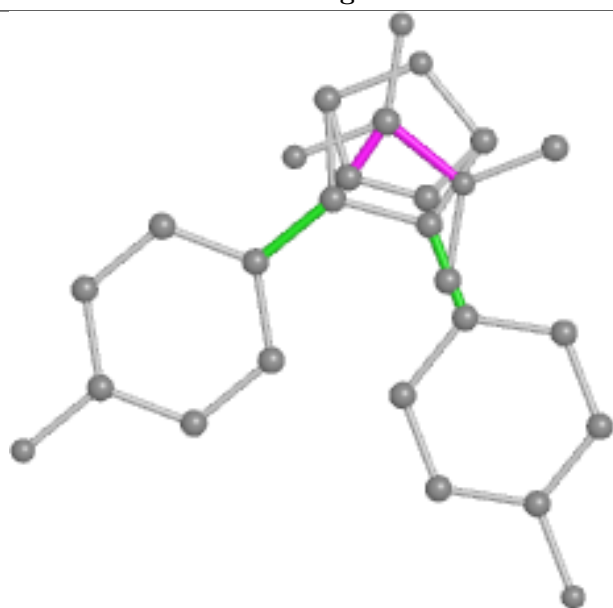
## Ligand OB9 A 601



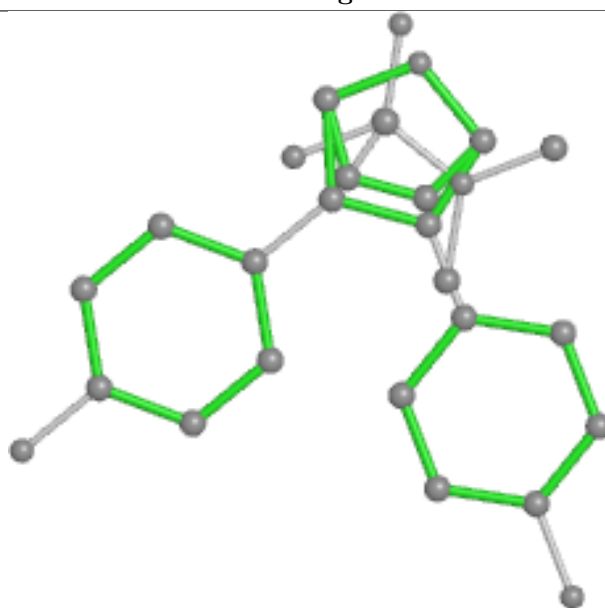
Bond lengths



Bond angles

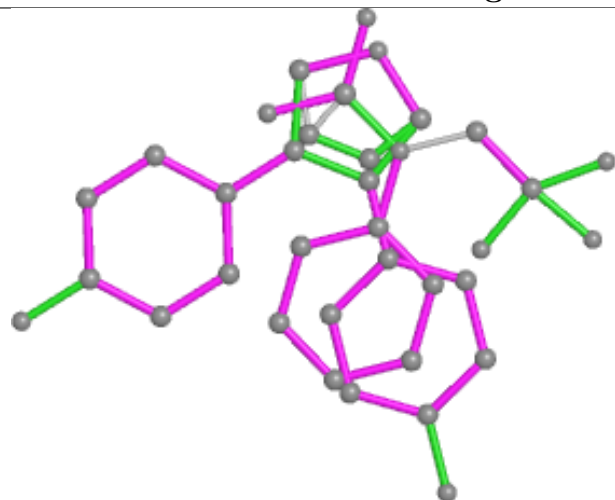


Torsions

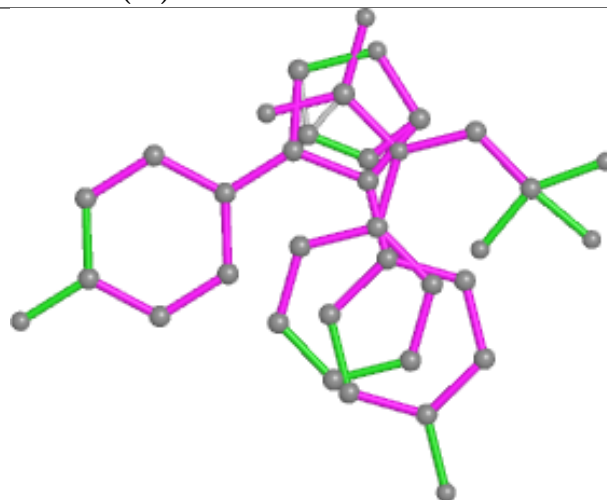


Rings

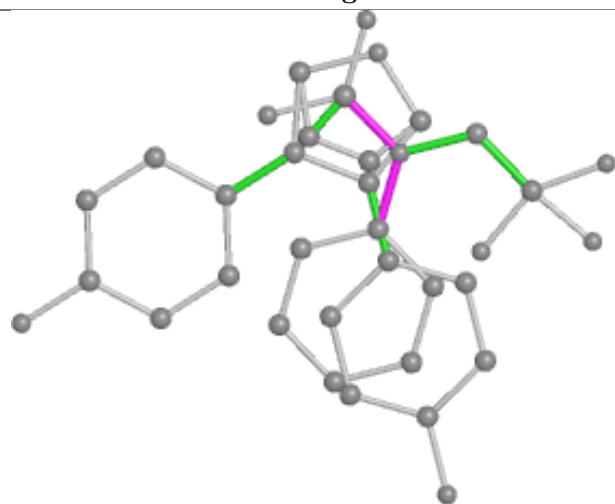
## Ligand OB9 B 601 (A)



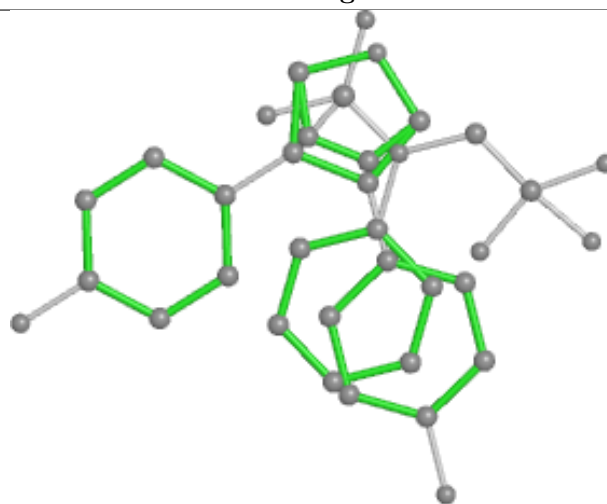
Bond lengths



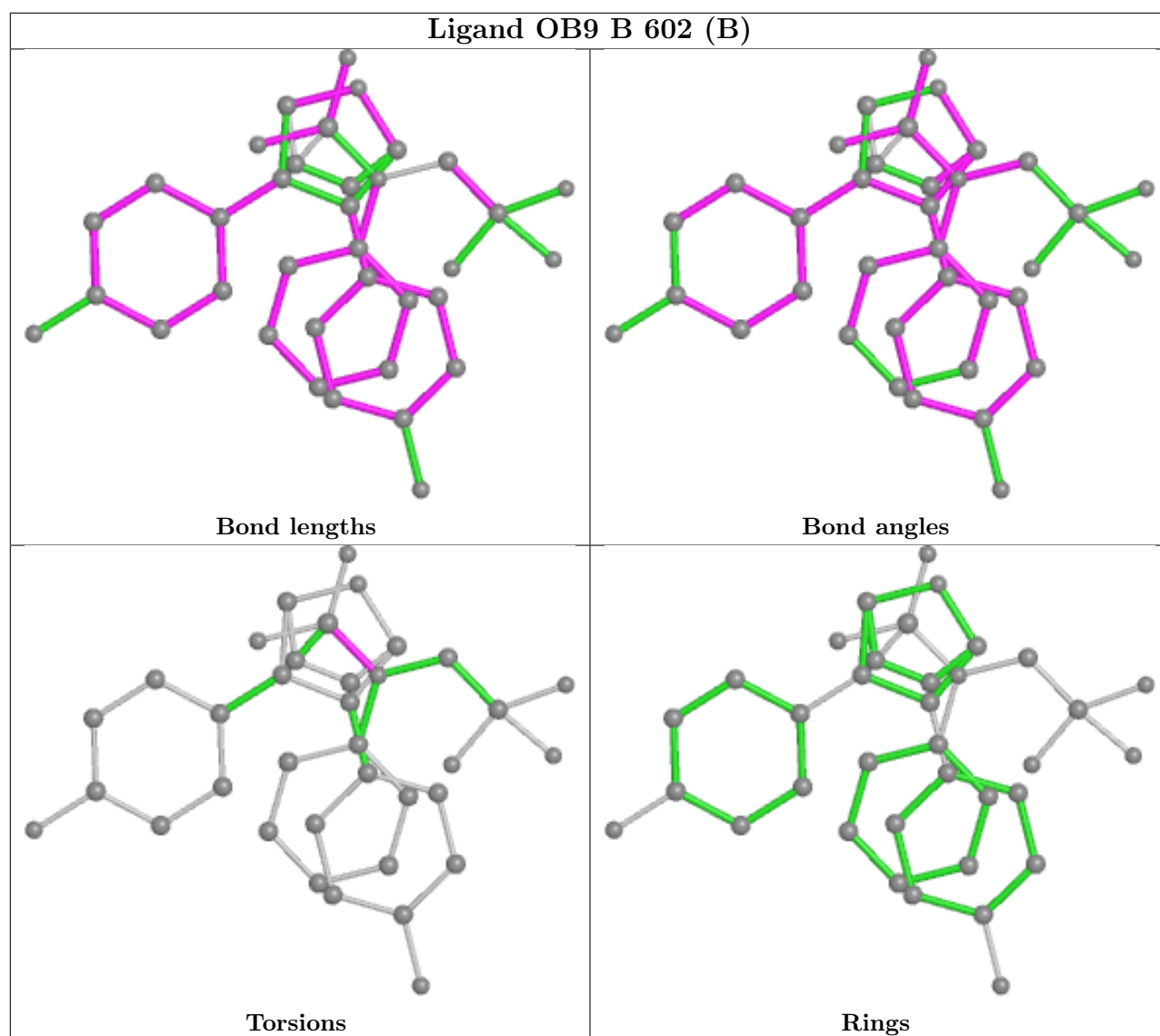
Bond angles



Torsions



Rings



## 5.7 Other polymers [i](#)

There are no such residues in this entry.

## 5.8 Polymer linkage issues [i](#)

There are no chain breaks in this entry.

## 6 Fit of model and data [i](#)

### 6.1 Protein, DNA and RNA chains [i](#)

In the following table, the column labelled ‘#RSRZ> 2’ contains the number (and percentage) of RSRZ outliers, followed by percent RSRZ outliers for the chain as percentile scores relative to all X-ray entries and entries of similar resolution. The OWAB column contains the minimum, median, 95<sup>th</sup> percentile and maximum values of the occupancy-weighted average B-factor per residue. The column labelled ‘Q< 0.9’ lists the number of (and percentage) of residues with an average occupancy less than 0.9.

Mol	Chain	Analysed	<RSRZ>	#RSRZ>2	OWAB(Å <sup>2</sup> )	Q<0.9
1	A	233/257 (90%)	0.10	5 (2%) 63 66	32, 51, 93, 116	0
1	B	224/257 (87%)	-0.01	8 (3%) 42 45	33, 52, 99, 131	0
2	C	10/14 (71%)	0.16	0 100 100	46, 69, 90, 92	0
2	D	9/14 (64%)	0.21	1 (11%) 5 6	57, 66, 85, 93	0
All	All	476/542 (87%)	0.05	14 (2%) 51 54	32, 53, 96, 131	0

All (14) RSRZ outliers are listed below:

Mol	Chain	Res	Type	RSRZ
1	B	331	TYR	3.0
1	B	335	ARG	3.0
1	B	526	TYR	2.9
1	A	541	LEU	2.8
1	B	305	SER	2.7
1	B	308	LEU	2.6
1	A	533	VAL	2.6
2	D	691	HIS	2.3
1	B	535	PRO	2.3
1	B	372	LEU	2.3
1	A	514	ILE	2.2
1	A	381	CYS	2.1
1	B	311	THR	2.1
1	A	516	HIS	2.0

### 6.2 Non-standard residues in protein, DNA, RNA chains [i](#)

There are no non-standard protein/DNA/RNA residues in this entry.

## 6.3 Carbohydrates [i](#)

There are no monosaccharides in this entry.

## 6.4 Ligands [i](#)

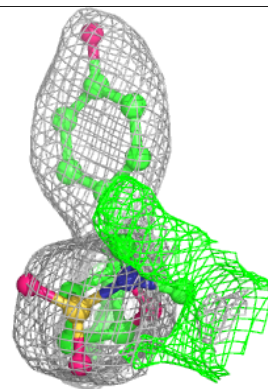
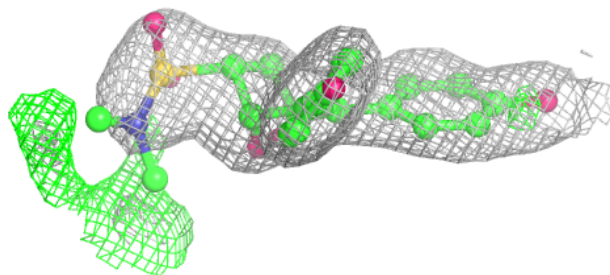
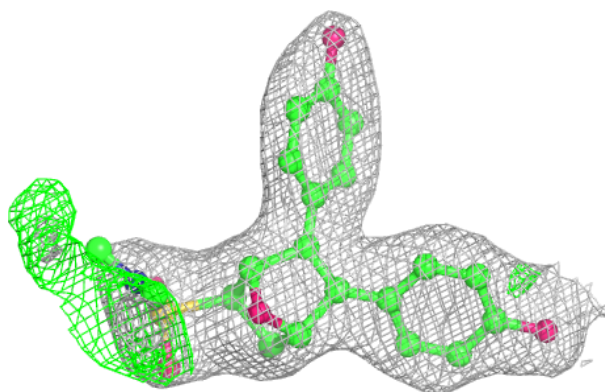
In the following table, the Atoms column lists the number of modelled atoms in the group and the number defined in the chemical component dictionary. The B-factors column lists the minimum, median, 95<sup>th</sup> percentile and maximum values of B factors of atoms in the group. The column labelled 'Q< 0.9' lists the number of atoms with occupancy less than 0.9.

Mol	Type	Chain	Res	Atoms	RSCC	RSR	B-factors( $\text{\AA}^2$ )	Q<0.9
3	OB9	A	601	27/36	0.93	0.17	30,40,106,110	27
3	OB9	B	601[A]	36/36	0.96	0.12	34,40,64,65	36
3	OB9	B	602[B]	36/36	0.96	0.11	33,41,64,67	36

The following is a graphical depiction of the model fit to experimental electron density of all instances of the Ligand of Interest. In addition, ligands with molecular weight > 250 and outliers as shown on the geometry validation Tables will also be included. Each fit is shown from different orientation to approximate a three-dimensional view.

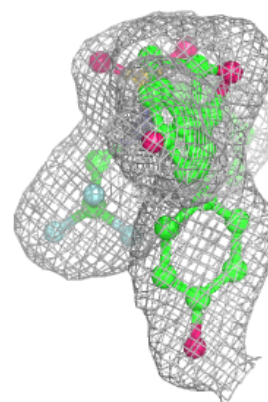
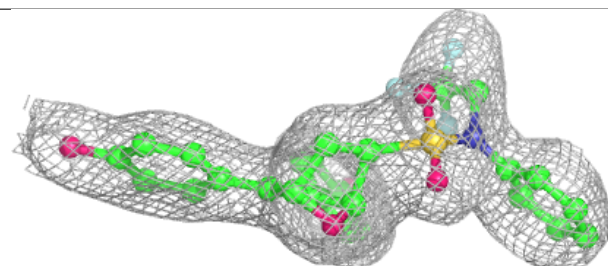
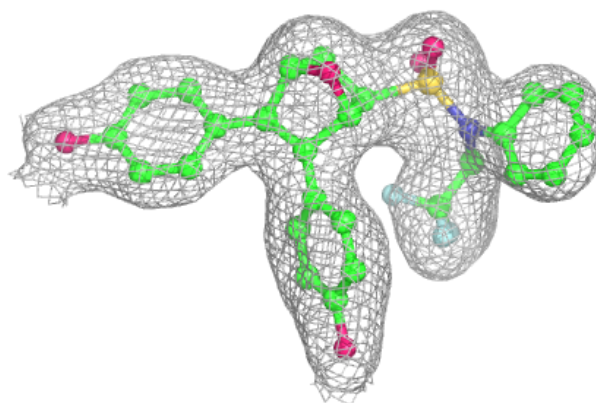
### Electron density around OB9 A 601:

2mF<sub>o</sub>-DF<sub>c</sub> (at 0.7 rmsd) in gray  
mF<sub>o</sub>-DF<sub>c</sub> (at 3 rmsd) in purple (negative)  
and green (positive)

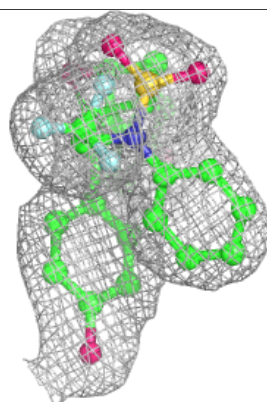
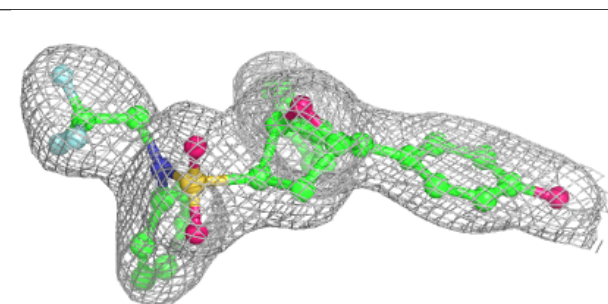
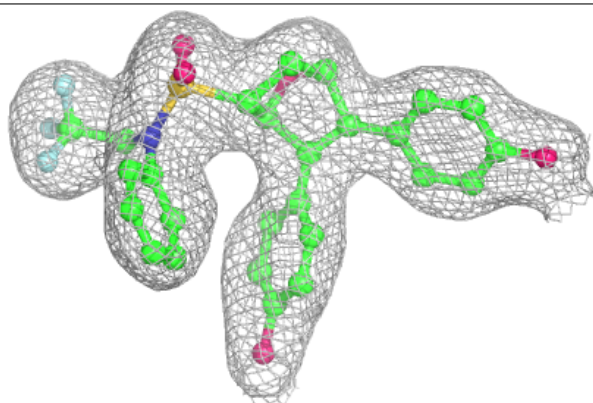


**Electron density around OB9 B 601 (A):**

$2mF_o-DF_c$  (at 0.7 rmsd) in gray  
 $mF_o-DF_c$  (at 3 rmsd) in purple (negative)  
and green (positive)

**Electron density around OB9 B 602 (B):**

$2mF_o-DF_c$  (at 0.7 rmsd) in gray  
 $mF_o-DF_c$  (at 3 rmsd) in purple (negative)  
and green (positive)



## 6.5 Other polymers [i](#)

There are no such residues in this entry.