



Full wwPDB EM Validation Report ⓘ

May 18, 2024 – 10:08 AM EDT

PDB ID : 7K0T
EMDB ID : EMD-22616
Title : Cryo-EM structure of rabbit RyR1 in the presence of AMP-PCP in nanodisc
Authors : Nayak, A.R.; Samso, M.
Deposited on : 2020-09-05
Resolution : 4.30 Å(reported)

This is a Full wwPDB EM Validation Report for a publicly released PDB entry.

We welcome your comments at validation@mail.wwpdb.org

A user guide is available at

<https://www.wwpdb.org/validation/2017/EMValidationReportHelp>

with specific help available everywhere you see the ⓘ symbol.

The types of validation reports are described at

<http://www.wwpdb.org/validation/2017/FAQs#types>.

The following versions of software and data (see [references ⓘ](#)) were used in the production of this report:

EMDB validation analysis : 0.0.1.dev92
Mogul : 1.8.5 (274361), CSD as541be (2020)
MolProbity : 4.02b-467
buster-report : 1.1.7 (2018)
Percentile statistics : 20191225.v01 (using entries in the PDB archive December 25th 2019)
MapQ : 1.9.13
Ideal geometry (proteins) : Engh & Huber (2001)
Ideal geometry (DNA, RNA) : Parkinson et al. (1996)
Validation Pipeline (wwPDB-VP) : 2.36.2

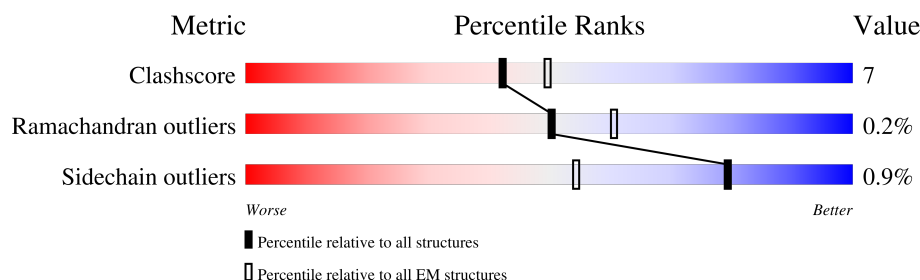
1 Overall quality at a glance

The following experimental techniques were used to determine the structure:

ELECTRON MICROSCOPY

The reported resolution of this entry is 4.30 Å.

Percentile scores (ranging between 0-100) for global validation metrics of the entry are shown in the following graphic. The table shows the number of entries on which the scores are based.



Metric	Whole archive (#Entries)	EM structures (#Entries)
Clashscore	158937	4297
Ramachandran outliers	154571	4023
Sidechain outliers	154315	3826

The table below summarises the geometric issues observed across the polymeric chains and their fit to the map. The red, orange, yellow and green segments of the bar indicate the fraction of residues that contain outliers for ≥ 3 , 2, 1 and 0 types of geometric quality criteria respectively. A grey segment represents the fraction of residues that are not modelled. The numeric value for each fraction is indicated below the corresponding segment, with a dot representing fractions $\leq 5\%$. The upper red bar (where present) indicates the fraction of residues that have poor fit to the EM map (all-atom inclusion $< 40\%$). The numeric value is given above the bar.

Mol	Chain	Length	Quality of chain
1	A	5037	
1	B	5037	
1	C	5037	
1	D	5037	

2 Entry composition [i](#)

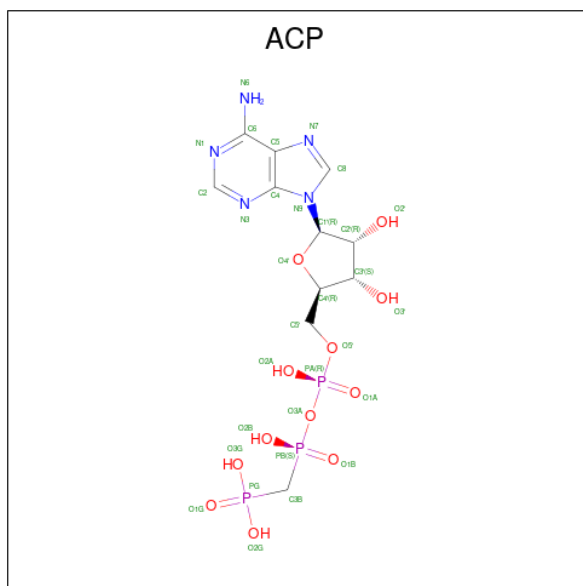
There are 3 unique types of molecules in this entry. The entry contains 115905 atoms, of which 0 are hydrogens and 0 are deuteriums.

In the tables below, the AltConf column contains the number of residues with at least one atom in alternate conformation and the Trace column contains the number of residues modelled with at most 2 atoms.

- Molecule 1 is a protein called RyR1.

Mol	Chain	Residues	Atoms					AltConf	Trace
1	A	4105	Total	C	N	O	S	0	0
			28962	18349	5127	5329	157		
1	B	4105	Total	C	N	O	S	0	0
			28934	18331	5126	5320	157		
1	D	4105	Total	C	N	O	S	0	0
			28933	18332	5125	5319	157		
1	C	4105	Total	C	N	O	S	0	0
			28948	18340	5129	5322	157		

- Molecule 2 is PHOSPHOMETHYLPHOSPHONIC ACID ADENYLATE ESTER (three-letter code: ACP) (formula: $C_{11}H_{18}N_5O_{12}P_3$) (labeled as "Ligand of Interest" by depositor).



Mol	Chain	Residues	Atoms					AltConf
2	A	1	Total	C	N	O	P	0
			31	11	5	12	3	
2	B	1	Total	C	N	O	P	0
			31	11	5	12	3	

Continued on next page...

Continued from previous page...

Mol	Chain	Residues	Atoms					AltConf
2	D	1	Total	C	N	O	P	0
			31	11	5	12	3	
2	C	1	Total	C	N	O	P	0
			31	11	5	12	3	

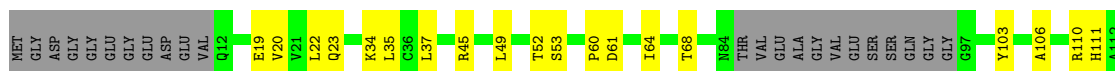
- Molecule 3 is ZINC ION (three-letter code: ZN) (formula: Zn).

Mol	Chain	Residues	Atoms		AltConf
3	A	1	Total	Zn	0
			1	1	
3	B	1	Total	Zn	0
			1	1	
3	D	1	Total	Zn	0
			1	1	
3	C	1	Total	Zn	0
			1	1	



















4 Experimental information

Property	Value	Source
EM reconstruction method	SINGLE PARTICLE	Depositor
Imposed symmetry	POINT, C4	Depositor
Number of particles used	21551	Depositor
Resolution determination method	FSC 0.143 CUT-OFF	Depositor
CTF correction method	PHASE FLIPPING AND AMPLITUDE CORRECTION	Depositor
Microscope	FEI TITAN KRIOS	Depositor
Voltage (kV)	300	Depositor
Electron dose ($e^-/\text{\AA}^2$)	70.3	Depositor
Minimum defocus (nm)	1200	Depositor
Maximum defocus (nm)	2200	Depositor
Magnification	130000	Depositor
Image detector	GATAN K2 SUMMIT (4k x 4k)	Depositor
Maximum map value	0.128	Depositor
Minimum map value	-0.059	Depositor
Average map value	0.001	Depositor
Map value standard deviation	0.006	Depositor
Recommended contour level	0.01	Depositor
Map size (Å)	462.24002, 462.24002, 462.24002	wwPDB
Map dimensions	432, 432, 432	wwPDB
Map angles (°)	90.0, 90.0, 90.0	wwPDB
Pixel spacing (Å)	1.07, 1.07, 1.07	Depositor

5 Model quality [i](#)

5.1 Standard geometry [i](#)

Bond lengths and bond angles in the following residue types are not validated in this section: ACP, ZN

The Z score for a bond length (or angle) is the number of standard deviations the observed value is removed from the expected value. A bond length (or angle) with $|Z| > 5$ is considered an outlier worth inspection. RMSZ is the root-mean-square of all Z scores of the bond lengths (or angles).

Mol	Chain	Bond lengths		Bond angles	
		RMSZ	# $ Z > 5$	RMSZ	# $ Z > 5$
1	A	0.25	0/25009	0.48	0/33951
1	B	0.26	1/24980 (0.0%)	0.49	4/33913 (0.0%)
1	C	0.25	0/24994	0.48	0/33929
1	D	0.25	1/24979 (0.0%)	0.48	2/33913 (0.0%)
All	All	0.25	2/99962 (0.0%)	0.48	6/135706 (0.0%)

Chiral center outliers are detected by calculating the chiral volume of a chiral center and verifying if the center is modelled as a planar moiety or with the opposite hand. A planarity outlier is detected by checking planarity of atoms in a peptide group, atoms in a mainchain group or atoms of a sidechain that are expected to be planar.

Mol	Chain	#Chirality outliers	#Planarity outliers
1	B	0	1
1	D	0	1
All	All	0	2

All (2) bond length outliers are listed below:

Mol	Chain	Res	Type	Atoms	Z	Observed(Å)	Ideal(Å)
1	D	889	GLN	C-N	7.23	1.46	1.33
1	B	967	PRO	C-N	6.46	1.49	1.34

All (6) bond angle outliers are listed below:

Mol	Chain	Res	Type	Atoms	Z	Observed(°)	Ideal(°)
1	B	967	PRO	O-C-N	8.89	136.92	122.70
1	B	967	PRO	CA-C-N	-8.58	98.31	117.20
1	B	967	PRO	C-N-CA	-7.14	103.86	121.70
1	D	889	GLN	CA-C-N	-5.35	105.50	116.20
1	D	889	GLN	C-N-CA	-5.13	111.53	122.30

Continued on next page...

Continued from previous page...

Mol	Chain	Res	Type	Atoms	Z	Observed(°)	Ideal(°)
1	B	4868	ASP	CB-CA-C	5.06	120.52	110.40

There are no chirality outliers.

All (2) planarity outliers are listed below:

Mol	Chain	Res	Type	Group
1	B	883	ALA	Peptide
1	D	889	GLN	Mainchain

5.2 Too-close contacts [i](#)

In the following table, the Non-H and H(model) columns list the number of non-hydrogen atoms and hydrogen atoms in the chain respectively. The H(added) column lists the number of hydrogen atoms added and optimized by MolProbity. The Clashes column lists the number of clashes within the asymmetric unit, whereas Symm-Clashes lists symmetry-related clashes.

Mol	Chain	Non-H	H(model)	H(added)	Clashes	Symm-Clashes
1	A	28962	0	24423	395	0
1	B	28934	0	24388	388	0
1	C	28948	0	24429	375	0
1	D	28933	0	24401	392	0
2	A	31	0	14	6	0
2	B	31	0	14	4	0
2	C	31	0	14	7	0
2	D	31	0	14	5	0
3	A	1	0	0	0	0
3	B	1	0	0	0	0
3	C	1	0	0	0	0
3	D	1	0	0	0	0
All	All	115905	0	97697	1534	0

The all-atom clashscore is defined as the number of clashes found per 1000 atoms (including hydrogen atoms). The all-atom clashscore for this structure is 7.

All (1534) close contacts within the same asymmetric unit are listed below, sorted by their clash magnitude.

Atom-1	Atom-2	Interatomic distance (Å)	Clash overlap (Å)
1:B:4662:ASN:O	1:B:4666:VAL:HG11	1.38	1.23
1:D:4662:ASN:O	1:D:4666:VAL:HG11	1.52	1.09

Continued on next page...

Continued from previous page...

Atom-1	Atom-2	Interatomic distance (Å)	Clash overlap (Å)
1:C:4865:LYS:HE2	1:C:4865:LYS:HA	1.37	1.06
1:D:3674:ILE:HB	1:D:3769:ARG:HH21	1.19	1.04
1:B:879:HIS:NE2	1:B:908:VAL:O	1.91	1.04
1:A:4867:GLU:CB	1:A:4871:GLU:CB	2.37	1.02
1:A:4867:GLU:CB	1:A:4871:GLU:HB2	1.89	1.02
1:B:880:GLU:OE2	1:B:965:TYR:CE2	2.12	1.00
1:A:3737:GLU:HA	1:A:3763:LEU:HD11	1.43	0.97
1:A:4874:MET:O	1:A:4875:LYS:HB2	1.64	0.95
1:A:3737:GLU:CA	1:A:3763:LEU:HD11	1.97	0.94
1:B:4666:VAL:HG13	1:B:4667:PRO:HD3	1.53	0.89
1:D:1707:LEU:HG	1:D:1708:ARG:H	1.34	0.89
1:B:880:GLU:OE2	1:B:965:TYR:HE2	1.54	0.87
1:B:3758:MET:HA	1:B:3758:MET:CE	2.06	0.86
1:B:3758:MET:HA	1:B:3758:MET:HE2	1.57	0.85
1:B:950:LEU:HD13	1:B:970:LEU:HD13	1.58	0.85
1:D:759:ILE:HG22	1:D:762:CYS:HB2	1.60	0.84
1:A:3737:GLU:N	1:A:3763:LEU:HD11	1.92	0.84
1:B:880:GLU:OE1	1:B:967:PRO:HA	1.76	0.84
1:C:3770:LEU:HD12	1:C:3770:LEU:O	1.77	0.83
1:D:4666:VAL:HG12	1:D:4667:PRO:HD3	1.60	0.82
1:B:4860:ARG:O	1:B:4876:CYS:SG	2.37	0.82
1:B:4662:ASN:O	1:B:4666:VAL:CG1	2.26	0.82
1:A:4867:GLU:CB	1:A:4871:GLU:HB3	2.09	0.81
1:B:4875:LYS:O	1:B:4877:ASP:N	2.13	0.81
1:B:759:ILE:HG22	1:B:762:CYS:HB2	1.62	0.80
1:D:4017:LEU:HD13	1:D:4020:GLN:HE21	1.46	0.80
1:D:4662:ASN:O	1:D:4666:VAL:CG1	2.29	0.79
1:B:4662:ASN:C	1:B:4666:VAL:HG11	2.05	0.78
1:C:759:ILE:HG22	1:C:762:CYS:HB2	1.67	0.76
1:B:880:GLU:OE2	1:B:965:TYR:CZ	2.39	0.76
1:D:879:HIS:NE2	1:D:908:VAL:O	2.15	0.76
1:A:759:ILE:HG22	1:A:762:CYS:HB2	1.68	0.76
1:B:173:SER:HB3	1:B:178:ARG:H	1.50	0.76
1:D:3674:ILE:HB	1:D:3769:ARG:NH2	1.99	0.76
1:C:670:GLU:HG3	1:C:788:LYS:H	1.51	0.75
1:C:4865:LYS:HD2	1:C:4865:LYS:N	2.01	0.75
1:D:4871:GLU:N	1:D:4872:PRO:HD3	2.01	0.75
1:D:880:GLU:OE2	1:D:965:TYR:OH	2.02	0.74
1:D:3762:ARG:HH21	1:D:4754:ASN:HA	1.50	0.74
1:A:652:ARG:HB2	1:A:750:LEU:HD23	1.70	0.74
1:A:4871:GLU:O	1:A:4871:GLU:HG2	1.88	0.73

Continued on next page...

Continued from previous page...

Atom-1	Atom-2	Interatomic distance (Å)	Clash overlap (Å)
1:C:4870:ASP:OD2	1:C:4872:PRO:CG	2.37	0.73
1:A:620:LEU:O	1:A:624:ASN:HB2	1.89	0.73
1:B:3761:GLN:HA	1:B:3761:GLN:OE1	1.89	0.73
1:A:670:GLU:HG3	1:A:788:LYS:H	1.54	0.72
1:B:670:GLU:HG3	1:B:788:LYS:H	1.54	0.72
1:A:4954:MET:SD	2:A:5101:ACP:H1'	2.29	0.72
1:C:4954:MET:SD	2:C:5101:ACP:H1'	2.30	0.72
1:B:880:GLU:OE2	1:B:965:TYR:OH	2.06	0.72
1:C:4104:THR:HG22	1:C:4106:PRO:HD2	1.71	0.72
1:C:652:ARG:HB2	1:C:750:LEU:HD23	1.72	0.72
1:D:293:LEU:HD13	1:D:298:GLY:H	1.54	0.72
1:D:5003:HIS:HB3	1:D:5008:SER:HB3	1.72	0.71
1:C:4865:LYS:HA	1:C:4865:LYS:CE	2.15	0.71
1:A:293:LEU:HD13	1:A:298:GLY:H	1.56	0.71
1:A:590:LEU:HD13	1:A:599:VAL:HG21	1.72	0.71
1:B:875:ALA:HB1	1:B:910:PHE:CZ	2.26	0.71
1:D:670:GLU:HG3	1:D:788:LYS:H	1.55	0.71
1:B:4791:TYR:HE1	1:B:4815:ASP:HB3	1.56	0.70
1:C:3761:GLN:OE1	1:C:3761:GLN:HA	1.91	0.70
1:C:4069:LYS:HD2	1:C:4133:GLN:HG2	1.74	0.70
1:B:3757:GLU:HA	1:B:3757:GLU:OE1	1.92	0.70
1:B:4995:LEU:HD11	1:B:5011:TRP:HB2	1.73	0.70
1:D:173:SER:HB3	1:D:178:ARG:H	1.57	0.69
1:C:560:ILE:HA	1:C:563:VAL:HG12	1.73	0.69
1:A:173:SER:HB3	1:A:178:ARG:H	1.55	0.69
1:C:293:LEU:HD13	1:C:298:GLY:H	1.57	0.69
1:B:2131:LEU:HB3	1:B:3662:ILE:HG21	1.74	0.69
1:B:875:ALA:HB1	1:B:910:PHE:CE1	2.28	0.69
1:C:3986:TRP:HA	1:C:3989:VAL:HG22	1.73	0.69
1:A:755:ILE:HB	1:A:768:PHE:HB2	1.74	0.69
2:B:5101:ACP:O1A	2:B:5101:ACP:H3B2	1.93	0.68
1:D:590:LEU:HD13	1:D:599:VAL:HG21	1.75	0.68
1:D:955:LEU:HD12	1:D:967:PRO:O	1.93	0.68
1:C:4985:LEU:HB2	2:C:5101:ACP:HN61	1.59	0.68
1:B:977:LEU:HB3	1:B:1044:ARG:HG3	1.77	0.67
1:A:1653:LEU:HD11	1:A:1659:LEU:HB3	1.76	0.67
1:A:1679:ASN:ND2	1:A:1797:ARG:O	2.28	0.67
1:B:652:ARG:HB2	1:B:750:LEU:HD23	1.77	0.67
1:B:3755:GLU:OE2	1:B:3755:GLU:HA	1.94	0.67
1:A:111:HIS:HD2	1:A:114:SER:H	1.41	0.67
1:A:4995:LEU:HD11	1:A:5011:TRP:HB2	1.76	0.67

Continued on next page...

Continued from previous page...

Atom-1	Atom-2	Interatomic distance (Å)	Clash overlap (Å)
1:A:3736:GLU:C	1:A:3763:LEU:HD11	2.15	0.67
1:B:3674:ILE:HB	1:B:3769:ARG:HH21	1.59	0.67
1:A:3737:GLU:HA	1:A:3763:LEU:CD1	2.21	0.66
1:A:197:GLN:NE2	1:A:198:THR:O	2.29	0.66
1:A:4866:SER:C	1:A:4871:GLU:OE2	2.33	0.66
1:A:4921:PHE:O	1:B:4892:ARG:NH2	2.29	0.66
1:B:615:ARG:NH2	1:B:1677:GLY:O	2.29	0.66
1:B:4843:LEU:HD22	1:B:4928:LEU:HD11	1.78	0.66
1:D:197:GLN:NE2	1:D:198:THR:O	2.28	0.66
1:D:615:ARG:NH2	1:D:1677:GLY:O	2.29	0.66
1:B:4662:ASN:C	1:B:4666:VAL:CG1	2.64	0.66
1:A:1705:GLY:HA2	1:A:1709:ALA:HB3	1.78	0.66
1:B:594:GLY:H	1:B:1594:ARG:HD2	1.61	0.66
1:B:3753:PHE:HZ	1:B:4719:PHE:CE1	2.14	0.65
1:A:3674:ILE:HB	1:A:3769:ARG:HH21	1.61	0.65
1:D:4666:VAL:CG1	1:D:4667:PRO:HD3	2.26	0.65
1:B:907:LEU:HB3	1:B:963:ASN:HD22	1.62	0.65
1:D:567:VAL:HG13	1:D:568:LEU:HD12	1.79	0.65
1:D:2291:GLN:NE2	1:D:2349:ASN:OD1	2.28	0.65
1:B:1232:ARG:NH1	1:B:1828:ASP:O	2.29	0.65
1:B:293:LEU:HD13	1:B:298:GLY:H	1.62	0.65
1:C:4017:LEU:HD13	1:C:4020:GLN:HE21	1.62	0.65
1:A:19:GLU:HA	1:A:68:THR:HA	1.78	0.65
1:A:3897:ASN:O	1:A:3897:ASN:ND2	2.22	0.65
1:D:907:LEU:HB3	1:D:963:ASN:HD22	1.62	0.65
1:D:4104:THR:HG22	1:D:4106:PRO:HD2	1.77	0.65
2:D:5101:ACP:O1A	2:D:5101:ACP:H3B2	1.95	0.65
1:A:907:LEU:HB3	1:A:963:ASN:HD22	1.61	0.65
1:C:1974:ARG:HH21	1:C:3642:TYR:HB2	1.62	0.65
1:B:4666:VAL:CG1	1:B:4667:PRO:HD3	2.23	0.64
1:D:719:LEU:O	1:D:720:HIS:ND1	2.30	0.64
1:C:1115:LEU:HB3	1:C:1123:VAL:HG11	1.79	0.64
1:C:182:LEU:HD11	1:C:189:LEU:HD23	1.79	0.64
1:C:594:GLY:H	1:C:1594:ARG:HD2	1.61	0.64
1:B:19:GLU:HA	1:B:68:THR:HA	1.79	0.64
1:A:4924:VAL:HG23	1:A:4925:ILE:HG12	1.80	0.64
1:D:652:ARG:HB2	1:D:750:LEU:HD23	1.80	0.64
1:B:4874:MET:SD	1:B:4876:CYS:HB2	2.38	0.63
1:C:1679:ASN:ND2	1:C:1797:ARG:O	2.31	0.63
1:C:2265:LEU:HD22	1:C:2330:ARG:HD3	1.80	0.63
1:B:1119:GLU:HG2	1:B:1134:LEU:HD21	1.80	0.63

Continued on next page...

Continued from previous page...

Atom-1	Atom-2	Interatomic distance (Å)	Clash overlap (Å)
1:D:322:LYS:HE3	1:D:322:LYS:HA	1.79	0.63
1:C:908:VAL:HG12	1:C:909:ASN:H	1.62	0.63
1:A:560:ILE:HA	1:A:563:VAL:HG12	1.80	0.63
1:A:606:LEU:O	1:A:617:ASN:ND2	2.32	0.63
1:A:1119:GLU:OE2	1:A:1133:HIS:NE2	2.30	0.63
1:B:606:LEU:O	1:B:617:ASN:ND2	2.32	0.63
1:C:606:LEU:O	1:C:617:ASN:ND2	2.32	0.63
1:A:3766:GLN:HA	1:A:3769:ARG:HB3	1.79	0.63
1:A:4864:ASN:O	1:A:4865:LYS:O	2.16	0.63
1:C:3773:ARG:HA	1:C:3815:LYS:HE3	1.79	0.62
1:D:3986:TRP:HA	1:D:3989:VAL:HG22	1.81	0.62
1:C:590:LEU:HD13	1:C:599:VAL:HG21	1.80	0.62
1:B:168:ASP:OD1	1:B:201:ASN:ND2	2.30	0.62
1:B:3761:GLN:NE2	1:B:4750:ILE:HD12	2.15	0.62
1:D:64:ILE:HG23	1:D:402:ARG:HH21	1.65	0.62
1:D:889:GLN:O	1:D:902:ARG:NH1	2.32	0.62
1:C:4738:ALA:HB1	1:C:4744:ASP:HA	1.80	0.62
1:C:4799:SER:HB2	1:C:4812:HIS:HE1	1.65	0.62
1:B:322:LYS:HE3	1:B:322:LYS:HA	1.81	0.62
1:C:22:LEU:HD11	1:C:37:LEU:HD12	1.82	0.62
1:C:3794:VAL:HG11	1:C:3835:LEU:HD21	1.82	0.62
1:A:2214:VAL:HG13	1:A:2215:LEU:HG	1.81	0.62
1:B:1229:ASN:HB3	1:B:1826:ALA:HB1	1.81	0.62
1:A:1931:LEU:HD22	1:A:1935:VAL:HG11	1.82	0.62
1:D:2248:ARG:HA	1:D:2286:LEU:HD21	1.82	0.62
1:A:4685:GLY:HA3	1:A:4689:THR:HB	1.81	0.62
1:B:491:ILE:O	1:B:495:ASN:N	2.33	0.62
1:B:883:ALA:HA	1:B:887:ILE:H	1.65	0.62
1:B:4920:PHE:O	1:B:4924:VAL:HG22	1.99	0.62
1:C:730:VAL:O	1:C:735:GLN:NE2	2.33	0.62
1:D:19:GLU:HA	1:D:68:THR:HA	1.81	0.61
1:D:606:LEU:O	1:D:617:ASN:ND2	2.34	0.61
1:D:3674:ILE:CG2	1:D:3769:ARG:HE	2.14	0.61
1:C:596:ASN:HD21	1:C:598:LYS:HB2	1.65	0.61
1:A:1215:ALA:HA	1:A:1219:LEU:HD13	1.83	0.61
1:B:4066:LEU:HD12	1:B:4133:GLN:HE22	1.66	0.61
1:A:2265:LEU:HD22	1:A:2330:ARG:HD3	1.81	0.61
1:D:3808:GLY:O	1:D:3813:GLN:NE2	2.34	0.61
1:B:2288:LEU:O	1:B:3849:ARG:NH1	2.34	0.61
1:A:4232:GLU:OE2	1:A:5017:ARG:NH2	2.34	0.60
1:B:22:LEU:HD11	1:B:37:LEU:HD12	1.83	0.60

Continued on next page...

Continued from previous page...

Atom-1	Atom-2	Interatomic distance (Å)	Clash overlap (Å)
1:C:615:ARG:NH2	1:C:1677:GLY:O	2.34	0.60
1:A:647:ASN:ND2	1:A:820:ARG:O	2.34	0.60
1:B:4875:LYS:C	1:B:4877:ASP:H	2.02	0.60
1:D:3675:ASP:N	1:D:3769:ARG:NH2	2.50	0.60
1:D:4871:GLU:C	1:D:4873:ASP:N	2.55	0.60
1:B:1703:LEU:HD12	1:B:1704:PRO:HD2	1.83	0.60
1:B:4666:VAL:HG13	1:B:4667:PRO:CD	2.29	0.60
1:A:1730:MET:O	1:A:1772:ARG:NH1	2.34	0.60
1:B:5003:HIS:HB3	1:B:5008:SER:HB2	1.83	0.60
1:D:2288:LEU:O	1:D:3849:ARG:NH1	2.35	0.60
1:B:4679:ARG:NH1	1:B:4715:TYR:OH	2.33	0.60
1:C:838:HIS:HA	1:C:1201:HIS:HB3	1.83	0.60
1:C:1730:MET:O	1:C:1772:ARG:NH1	2.35	0.60
1:A:748:LEU:HD22	1:A:755:ILE:HG12	1.83	0.60
1:A:2288:LEU:O	1:A:3849:ARG:NH1	2.34	0.60
1:D:4101:LYS:HG3	1:C:4731:ILE:HA	1.82	0.60
1:C:19:GLU:HA	1:C:68:THR:HA	1.83	0.60
1:A:4182:GLU:OE2	1:A:4983:HIS:ND1	2.35	0.60
1:C:4182:GLU:OE2	1:C:4983:HIS:ND1	2.34	0.60
1:D:3794:VAL:HG11	1:D:3835:LEU:HD11	1.84	0.60
1:A:4137:ARG:NH2	1:A:4196:GLU:OE2	2.35	0.59
1:D:176:SER:OG	1:D:178:ARG:NH1	2.35	0.59
1:A:418:LEU:HD22	1:A:493:ARG:HD3	1.84	0.59
1:B:730:VAL:O	1:B:735:GLN:NE2	2.35	0.59
1:B:4184:MET:HB3	1:B:4190:ILE:HD13	1.84	0.59
1:B:4867:GLU:OE1	1:B:4869:GLU:O	2.20	0.59
1:D:2005:GLN:HE22	1:D:3641:LEU:HD22	1.67	0.59
1:B:556:ALA:HB1	1:B:560:ILE:HG12	1.83	0.59
1:D:3698:LEU:HD22	1:D:3770:LEU:O	2.02	0.59
1:B:2005:GLN:HE22	1:B:3641:LEU:HD22	1.66	0.59
1:C:1229:ASN:HB3	1:C:1826:ALA:HB1	1.85	0.59
1:C:4874:MET:O	1:C:4876:CYS:N	2.36	0.59
1:C:2816:MET:SD	1:C:2882:TYR:OH	2.59	0.59
1:A:684:VAL:HG12	1:A:781:VAL:HG23	1.84	0.59
1:A:4820:VAL:HB	1:A:4823:LEU:HD23	1.85	0.59
1:C:869:ARG:NH2	1:C:941:MET:SD	2.75	0.59
1:A:719:LEU:HD13	1:A:735:GLN:HG2	1.85	0.59
1:B:719:LEU:HD13	1:B:735:GLN:HG2	1.84	0.59
1:D:4924:VAL:HA	1:D:4928:LEU:HD23	1.84	0.59
1:C:2288:LEU:O	1:C:3849:ARG:NH1	2.34	0.59
1:A:1196:PRO:O	1:A:1198:GLN:NE2	2.33	0.59

Continued on next page...

Continued from previous page...

Atom-1	Atom-2	Interatomic distance (Å)	Clash overlap (Å)
1:D:61:ASP:OD2	1:D:402:ARG:NH2	2.36	0.59
1:C:4046:ASP:OD1	1:C:4159:ARG:NH2	2.35	0.59
1:A:182:LEU:HD11	1:A:189:LEU:HD23	1.84	0.59
1:A:4162:ASN:O	1:A:4166:LEU:HB2	2.03	0.59
1:B:1730:MET:O	1:B:1772:ARG:NH1	2.36	0.59
1:D:1732:SER:OG	1:D:2140:ARG:NH2	2.35	0.59
1:C:4094:GLN:NE2	1:C:4109:GLN:OE1	2.36	0.59
2:C:5101:ACP:O2B	2:C:5101:ACP:H5'2	2.03	0.59
1:A:4058:ILE:HG22	1:A:4062:PHE:CE2	2.38	0.58
1:D:2208:MET:SD	1:D:2253:HIS:ND1	2.76	0.58
1:A:168:ASP:OD1	1:A:201:ASN:ND2	2.31	0.58
1:A:4003:LEU:HD21	1:A:4012:LEU:HD23	1.85	0.58
1:B:719:LEU:O	1:B:720:HIS:ND1	2.36	0.58
1:D:794:GLY:H	1:D:798:GLY:HA3	1.66	0.58
1:D:4791:TYR:HE1	1:D:4815:ASP:HB3	1.68	0.58
1:B:4666:VAL:N	1:B:4667:PRO:HD2	2.19	0.58
1:D:1703:LEU:HD11	1:D:1709:ALA:HB2	1.85	0.58
1:D:4871:GLU:N	1:D:4872:PRO:CD	2.65	0.58
1:B:560:ILE:HA	1:B:563:VAL:HG12	1.86	0.58
1:C:2742:THR:O	1:C:2814:LYS:NZ	2.34	0.58
1:A:730:VAL:O	1:A:735:GLN:NE2	2.35	0.58
1:A:1041:GLN:OE1	1:A:1044:ARG:NH1	2.36	0.58
1:B:4731:ILE:HA	1:C:4101:LYS:HG3	1.85	0.58
1:C:23:GLN:OE1	1:C:203:ASN:ND2	2.37	0.58
1:B:4661:TYR:OH	1:B:4786:ASP:OD2	2.22	0.58
1:C:719:LEU:O	1:C:720:HIS:ND1	2.36	0.58
1:C:1041:GLN:HA	1:C:1044:ARG:HD3	1.85	0.58
1:B:649:PHE:HB3	1:B:776:LEU:HD13	1.85	0.58
1:B:3986:TRP:HA	1:B:3989:VAL:HG22	1.84	0.58
1:D:1383:UNK:HA	1:D:1398:UNK:HA	1.85	0.58
1:C:1866:ILE:HD11	1:C:1926:LEU:HD23	1.84	0.58
1:A:289:ARG:NE	1:A:303:ASP:OD1	2.37	0.58
1:D:4666:VAL:CG2	1:D:4783:ILE:CD1	2.81	0.58
1:D:22:LEU:HD11	1:D:37:LEU:HD12	1.86	0.58
1:D:2096:GLU:O	1:D:2100:HIS:ND1	2.34	0.58
1:A:4973:HIS:ND1	1:D:4227:GLU:OE2	2.33	0.57
1:B:883:ALA:HB2	1:B:886:ARG:HB2	1.86	0.57
1:D:719:LEU:HD13	1:D:735:GLN:HG2	1.86	0.57
1:D:4666:VAL:N	1:D:4667:PRO:HD2	2.18	0.57
1:A:838:HIS:HA	1:A:1201:HIS:HB3	1.86	0.57
1:B:2740:VAL:HG11	1:B:2815:ALA:HB2	1.86	0.57

Continued on next page...

Continued from previous page...

Atom-1	Atom-2	Interatomic distance (Å)	Clash overlap (Å)
1:C:763:PRO:O	1:C:765:GLN:NE2	2.37	0.57
1:A:210:GLU:OE1	1:A:273:HIS:NE2	2.37	0.57
1:A:4849:TYR:HA	1:A:4883:TYR:HE1	1.69	0.57
1:B:1041:GLN:OE1	1:B:1044:ARG:NH1	2.37	0.57
1:A:1074:ILE:HD12	1:A:1115:LEU:HD12	1.87	0.57
1:B:1936:LYS:HB2	1:B:2116:LEU:HD11	1.85	0.57
1:C:1383:UNK:HA	1:C:1398:UNK:HA	1.86	0.57
1:A:323:LEU:HG	1:A:325:THR:H	1.69	0.57
1:A:4201:ASN:ND2	1:A:4993:MET:SD	2.78	0.57
1:D:2359:ARG:NH1	1:C:195:PHE:O	2.33	0.57
1:B:1383:UNK:HA	1:B:1398:UNK:HA	1.87	0.57
1:B:4849:TYR:HA	1:B:4883:TYR:HE1	1.69	0.57
1:D:182:LEU:HD11	1:D:189:LEU:HD23	1.85	0.57
1:C:1247:PRO:HA	1:C:1598:GLN:HG3	1.87	0.57
1:A:64:ILE:HG23	1:A:402:ARG:HH21	1.68	0.57
1:A:717:ASP:OD1	1:A:720:HIS:ND1	2.38	0.56
1:B:111:HIS:CD2	1:B:114:SER:H	2.23	0.56
1:D:103:TYR:HB3	1:D:152:PRO:HD3	1.87	0.56
1:D:560:ILE:HA	1:D:563:VAL:HG12	1.87	0.56
1:D:4871:GLU:C	1:D:4873:ASP:H	2.08	0.56
1:A:3737:GLU:N	1:A:3763:LEU:CD1	2.67	0.56
1:B:1703:LEU:HD21	1:B:1709:ALA:N	2.19	0.56
1:C:4004:ALA:HA	1:C:4013:LEU:HD11	1.87	0.56
1:A:4184:MET:HB2	1:A:4190:ILE:HD13	1.86	0.56
1:D:730:VAL:O	1:D:735:GLN:NE2	2.38	0.56
1:D:4046:ASP:OD1	1:D:4159:ARG:NH2	2.38	0.56
1:C:633:LEU:HB3	1:C:1639:LEU:HD11	1.88	0.56
1:C:755:ILE:HB	1:C:768:PHE:HB2	1.87	0.56
1:B:4874:MET:O	1:B:4876:CYS:N	2.38	0.56
1:D:1735:ILE:HG22	1:D:2142:TYR:HB3	1.87	0.56
1:B:243:ARG:NH1	1:B:301:VAL:O	2.39	0.56
1:A:23:GLN:HE21	1:A:34:LYS:HB3	1.70	0.56
1:A:2291:GLN:O	1:A:2292:GLU:HG3	2.06	0.56
1:B:733:PRO:HD2	1:B:763:PRO:HD2	1.87	0.56
1:B:1735:ILE:HG22	1:B:2142:TYR:HB3	1.87	0.56
1:C:4985:LEU:HB2	2:C:5101:ACP:N6	2.19	0.56
2:C:5101:ACP:O1A	2:C:5101:ACP:H3B1	2.05	0.56
1:B:4100:GLN:O	1:B:4101:LYS:HG2	2.06	0.56
1:D:1041:GLN:OE1	1:D:1044:ARG:NH1	2.39	0.56
1:D:4574:ASN:HA	1:D:4577:LEU:HD12	1.88	0.56
1:A:4151:SER:HB2	1:A:4164:LEU:HD21	1.86	0.55

Continued on next page...

Continued from previous page...

Atom-1	Atom-2	Interatomic distance (Å)	Clash overlap (Å)
1:B:120:CYS:HA	1:B:135:VAL:HA	1.88	0.55
1:B:3754:GLU:N	1:B:3754:GLU:OE1	2.39	0.55
1:B:4664:LEU:CD2	1:B:4665:LYS:HE3	2.36	0.55
1:D:221:ARG:NH2	1:D:255:HIS:O	2.39	0.55
1:D:880:GLU:OE2	1:D:965:TYR:CE2	2.59	0.55
1:D:4871:GLU:O	1:D:4874:MET:HE2	2.05	0.55
1:C:1702:HIS:O	1:C:1708:ARG:NH2	2.39	0.55
1:C:2291:GLN:O	1:C:2292:GLU:HG3	2.06	0.55
1:A:331:VAL:HG22	1:A:333:GLY:H	1.70	0.55
1:B:2291:GLN:O	1:B:2292:GLU:HG3	2.06	0.55
1:D:1155:LEU:HD23	1:D:1184:ILE:HG23	1.89	0.55
1:C:23:GLN:HE21	1:C:34:LYS:HB3	1.72	0.55
1:C:4865:LYS:HD2	1:C:4865:LYS:H	1.68	0.55
1:B:1105:ALA:HB1	1:B:1109:LEU:HD21	1.87	0.55
1:B:2265:LEU:HD22	1:B:2330:ARG:HD3	1.89	0.55
1:A:4046:ASP:OD1	1:A:4159:ARG:NH2	2.40	0.55
1:B:1866:ILE:HD11	1:B:1926:LEU:HD23	1.88	0.55
1:B:4191:GLU:OE1	1:B:5006:GLN:NE2	2.40	0.55
1:D:243:ARG:NH1	1:D:301:VAL:O	2.40	0.55
1:C:138:GLN:HG2	1:C:139:GLU:N	2.22	0.55
1:C:243:ARG:NH1	1:C:301:VAL:O	2.38	0.55
1:C:580:GLU:HG2	1:C:583:ILE:HD11	1.88	0.55
1:C:4875:LYS:N	1:C:4875:LYS:HD2	2.22	0.55
1:D:614:VAL:HG22	1:D:616:SER:H	1.72	0.55
1:D:4958:CYS:SG	1:D:4983:HIS:CD2	2.98	0.55
1:A:45:ARG:HG2	1:A:443:LEU:HD21	1.89	0.55
1:A:3753:PHE:HA	1:A:3756:LYS:HD2	1.87	0.55
1:B:590:LEU:HD13	1:B:599:VAL:HG21	1.88	0.55
1:B:1155:LEU:HD23	1:B:1184:ILE:HG23	1.89	0.55
1:D:1738:LEU:HB2	1:D:2146:PRO:HD3	1.89	0.55
1:A:4738:ALA:HB1	1:A:4744:ASP:HA	1.88	0.55
1:B:1384:UNK:O	1:B:1397:UNK:N	2.40	0.55
1:B:3842:LEU:O	1:B:3929:SER:OG	2.24	0.55
1:D:4567:LEU:HD12	1:D:4816:ILE:HG22	1.89	0.55
1:C:4875:LYS:HA	1:C:4875:LYS:CE	2.37	0.55
1:C:4958:CYS:SG	1:C:4978:HIS:CD2	3.00	0.55
1:A:284:HIS:HB3	1:A:287:THR:HB	1.89	0.55
1:B:2877:GLN:OE1	1:B:2939:ARG:NH2	2.40	0.55
1:B:3767:GLN:HG3	1:B:3809:ASN:OD1	2.07	0.55
1:B:4958:CYS:HA	2:B:5101:ACP:H2	1.88	0.55
1:C:4865:LYS:HE2	1:C:4865:LYS:CA	2.22	0.55

Continued on next page...

Continued from previous page...

Atom-1	Atom-2	Interatomic distance (Å)	Clash overlap (Å)
1:A:16:THR:OG1	1:A:97:GLY:O	2.25	0.54
1:A:3878:ASP:OD1	1:A:3879:GLU:N	2.40	0.54
1:B:4708:THR:OG1	1:B:4772:ASP:OD2	2.20	0.54
1:B:4966:ASP:OD1	1:B:4967:TYR:N	2.40	0.54
1:D:3674:ILE:HG22	1:D:3769:ARG:HE	1.72	0.54
1:A:1232:ARG:NH1	1:A:1828:ASP:O	2.31	0.54
1:A:2205:GLU:O	1:A:2209:GLU:HG2	2.06	0.54
1:B:121:LEU:HG	1:B:136:GLY:HA3	1.89	0.54
1:D:1703:LEU:HD22	1:D:1708:ARG:HB3	1.88	0.54
1:D:1866:ILE:HD11	1:D:1926:LEU:HD23	1.90	0.54
1:C:2305:CYS:O	1:C:2324:ASN:ND2	2.40	0.54
1:C:3198:UNK:O	1:C:3200:UNK:N	2.40	0.54
1:A:1735:ILE:HG22	1:A:2142:TYR:HB3	1.88	0.54
1:B:4170:ILE:HG23	1:B:4171:LEU:HD12	1.90	0.54
1:C:4874:MET:C	1:C:4876:CYS:H	2.09	0.54
2:C:5101:ACP:H3B1	2:C:5101:ACP:H5'1	1.88	0.54
1:A:664:PHE:HB2	1:A:746:CYS:H	1.72	0.54
1:D:4170:ILE:HG23	1:D:4171:LEU:HD12	1.88	0.54
1:C:13:PHE:HE1	1:C:164:ARG:HG3	1.71	0.54
1:C:647:ASN:ND2	1:C:820:ARG:O	2.35	0.54
1:B:4820:VAL:HB	1:B:4823:LEU:HD23	1.90	0.54
1:C:2005:GLN:HE22	1:C:3641:LEU:HD22	1.71	0.54
1:A:614:VAL:HG22	1:A:616:SER:H	1.72	0.54
1:A:4180:ARG:HH21	1:A:4981:GLU:HG3	1.72	0.54
1:B:4921:PHE:CZ	1:C:4892:ARG:HB2	2.42	0.54
1:D:23:GLN:HE21	1:D:34:LYS:HB3	1.72	0.54
1:D:1384:UNK:O	1:D:1397:UNK:N	2.41	0.54
1:D:4826:ILE:O	1:D:4829:SER:OG	2.25	0.54
1:C:1095:VAL:HB	1:C:1199:VAL:HG13	1.90	0.54
1:C:4563:ARG:HH22	1:C:4791:TYR:HE2	1.56	0.54
1:D:4184:MET:HB3	1:D:4190:ILE:HD13	1.89	0.54
1:C:1155:LEU:HD23	1:C:1184:ILE:HG23	1.89	0.54
1:C:3808:GLY:O	1:C:3813:GLN:NE2	2.38	0.54
1:A:111:HIS:CD2	1:A:114:SER:H	2.22	0.54
1:B:2131:LEU:HD13	1:B:3662:ILE:HG12	1.90	0.54
1:D:1730:MET:O	1:D:1772:ARG:NH1	2.40	0.54
1:D:3888:LEU:HD12	1:D:3891:LEU:HD12	1.90	0.54
1:D:4675:LYS:NZ	1:D:4715:TYR:OH	2.40	0.54
1:C:16:THR:OG1	1:C:97:GLY:O	2.24	0.54
1:C:61:ASP:OD2	1:C:402:ARG:NH2	2.41	0.54
1:C:221:ARG:NH2	1:C:255:HIS:O	2.38	0.54

Continued on next page...

Continued from previous page...

Atom-1	Atom-2	Interatomic distance (Å)	Clash overlap (Å)
1:D:5004:THR:HG22	1:D:5007:GLU:HG3	1.90	0.54
1:A:4104:THR:HG22	1:A:4106:PRO:HD2	1.89	0.54
1:B:210:GLU:OE1	1:B:273:HIS:NE2	2.41	0.54
1:B:3888:LEU:HD12	1:B:3891:LEU:HD12	1.90	0.54
1:B:4879:MET:SD	1:C:4578:LEU:HD12	2.48	0.54
1:D:2452:ARG:NH2	1:C:177:GLU:OE1	2.37	0.54
1:D:4697:VAL:HA	1:D:4700:GLN:HB3	1.89	0.54
1:C:4679:ARG:NH1	1:C:4715:TYR:OH	2.40	0.54
1:A:1041:GLN:HA	1:A:1044:ARG:HH11	1.73	0.53
1:A:3657:TYR:HD2	1:A:3661:TRP:CD1	2.25	0.53
1:D:4871:GLU:O	1:D:4874:MET:CE	2.55	0.53
1:A:1859:VAL:HA	1:A:1862:ILE:HG22	1.90	0.53
1:A:4921:PHE:CE1	1:A:4925:ILE:HG13	2.43	0.53
1:A:650:VAL:O	1:A:777:PHE:N	2.34	0.53
1:A:4799:SER:HB2	1:A:4812:HIS:HE1	1.72	0.53
1:B:1159:THR:HG23	1:B:1178:ALA:HA	1.90	0.53
1:C:206:CYS:HB2	1:C:271:GLY:HA3	1.91	0.53
1:C:3946:GLN:HA	1:C:3949:ARG:HG2	1.90	0.53
1:A:627:PRO:O	1:A:629:ARG:NH1	2.41	0.53
1:D:4995:LEU:HD11	1:D:5011:TRP:HB2	1.90	0.53
1:A:23:GLN:OE1	1:A:203:ASN:ND2	2.41	0.53
1:A:221:ARG:NH2	1:A:255:HIS:O	2.39	0.53
1:B:758:ARG:NH1	1:B:760:ASN:O	2.42	0.53
1:D:3762:ARG:NH2	1:D:4754:ASN:HA	2.23	0.53
1:C:664:PHE:HB2	1:C:746:CYS:H	1.73	0.53
1:C:2107:GLN:O	1:C:3694:LYS:NZ	2.32	0.53
1:C:3657:TYR:HD2	1:C:3661:TRP:CD1	2.26	0.53
1:B:1288:UNK:HA	1:B:1327:UNK:HA	1.90	0.53
1:B:5004:THR:HG22	1:B:5007:GLU:HG3	1.90	0.53
1:D:4666:VAL:HG23	1:D:4783:ILE:HD11	1.91	0.53
1:C:650:VAL:O	1:C:777:PHE:N	2.35	0.53
1:C:1196:PRO:O	1:C:1198:GLN:NE2	2.33	0.53
1:C:4875:LYS:HA	1:C:4875:LYS:HE2	1.90	0.53
1:B:794:GLY:H	1:B:798:GLY:HA3	1.73	0.53
1:A:591:ASP:O	1:A:1594:ARG:NH1	2.37	0.53
1:A:2005:GLN:HE22	1:A:3641:LEU:HD22	1.74	0.53
1:A:4687:TYR:OH	1:A:4699:GLY:O	2.27	0.53
1:A:4904:PRO:HB3	1:A:4913:ARG:HG2	1.90	0.53
1:B:3850:GLN:NE2	1:B:3870:ASN:O	2.42	0.53
1:D:1841:VAL:O	1:D:1845:VAL:HG23	2.09	0.53
1:D:4664:LEU:CD2	1:D:4665:LYS:HE3	2.39	0.53

Continued on next page...

Continued from previous page...

Atom-1	Atom-2	Interatomic distance (Å)	Clash overlap (Å)
1:C:695:TYR:OH	1:C:1073:ARG:NH2	2.42	0.53
1:C:2042:CYS:SG	1:C:2043:GLY:N	2.79	0.53
1:B:162:LYS:O	1:B:164:ARG:NH1	2.42	0.53
1:B:1293:UNK:N	1:B:1324:UNK:O	2.42	0.53
1:B:1936:LYS:HA	1:B:1939:MET:HE2	1.91	0.53
1:B:23:GLN:OE1	1:B:203:ASN:ND2	2.42	0.53
1:B:3761:GLN:NE2	1:B:4750:ILE:CD1	2.72	0.53
1:D:556:ALA:HB1	1:D:560:ILE:HG12	1.91	0.53
1:D:591:ASP:O	1:D:1594:ARG:NH1	2.37	0.53
1:A:4125:PHE:HA	1:A:4128:PHE:HB3	1.92	0.52
1:B:614:VAL:HG22	1:B:616:SER:H	1.73	0.52
1:B:2358:ILE:HA	1:B:2364:PHE:HZ	1.74	0.52
1:D:838:HIS:HA	1:D:1201:HIS:HB3	1.92	0.52
1:D:4690:GLU:HG2	1:D:4691:GLN:N	2.23	0.52
1:D:4820:VAL:HB	1:D:4823:LEU:HD23	1.90	0.52
1:D:4985:LEU:HB2	2:D:5101:ACP:N6	2.25	0.52
1:C:733:PRO:HD2	1:C:763:PRO:HD2	1.90	0.52
1:A:619:ASP:HA	1:A:622:THR:HG22	1.92	0.52
1:B:182:LEU:HD11	1:B:189:LEU:HD23	1.90	0.52
1:B:627:PRO:O	1:B:629:ARG:NH1	2.41	0.52
1:B:4720:VAL:HA	1:B:4723:LYS:HG2	1.90	0.52
1:D:169:LEU:HD21	1:D:202:MET:HG2	1.91	0.52
1:D:256:ALA:H	1:D:480:GLU:HG3	1.74	0.52
1:C:45:ARG:HG2	1:C:443:LEU:HD21	1.92	0.52
1:C:289:ARG:HG2	1:C:303:ASP:HA	1.90	0.52
1:C:1148:VAL:HB	1:C:1165:ASN:HA	1.90	0.52
1:C:1385:UNK:HA	1:C:1396:UNK:HA	1.90	0.52
1:B:1839:VAL:HG13	1:B:1841:VAL:H	1.74	0.52
1:D:500:ALA:HA	1:D:504:ALA:HB3	1.92	0.52
1:D:3946:GLN:HA	1:D:3949:ARG:HG2	1.90	0.52
1:D:4232:GLU:OE2	1:D:5017:ARG:NH2	2.43	0.52
1:C:1735:ILE:HG22	1:C:2142:TYR:HB3	1.90	0.52
1:C:4875:LYS:CE	1:C:4875:LYS:CA	2.85	0.52
1:A:637:LEU:HD23	1:A:1637:MET:HE3	1.91	0.52
1:A:1693:GLN:HG3	1:A:1708:ARG:HH22	1.74	0.52
1:B:3657:TYR:HD2	1:B:3661:TRP:CD1	2.28	0.52
1:D:23:GLN:OE1	1:D:203:ASN:ND2	2.41	0.52
1:C:3850:GLN:NE2	1:C:3870:ASN:O	2.42	0.52
1:A:3842:LEU:O	1:A:3929:SER:OG	2.26	0.52
1:D:4871:GLU:H	1:D:4872:PRO:HD3	1.71	0.52
1:C:908:VAL:HG12	1:C:909:ASN:N	2.25	0.52

Continued on next page...

Continued from previous page...

Atom-1	Atom-2	Interatomic distance (Å)	Clash overlap (Å)
1:C:1243:PRO:HB2	1:C:1600:LEU:HD13	1.92	0.52
1:A:4710:SER:O	1:A:4713:SER:OG	2.25	0.52
1:D:2742:THR:HG23	1:D:2814:LYS:HD2	1.91	0.52
1:D:4578:LEU:HD12	1:C:4879:MET:SD	2.50	0.52
1:C:4690:GLU:HG2	1:C:4691:GLN:H	1.75	0.52
1:A:22:LEU:HD11	1:A:37:LEU:HD12	1.90	0.52
1:A:1293:UNK:N	1:A:1324:UNK:O	2.43	0.52
1:A:3757:GLU:OE1	1:A:4719:PHE:CZ	2.63	0.52
1:B:580:GLU:HG2	1:B:583:ILE:HD11	1.91	0.52
1:B:1385:UNK:HA	1:B:1396:UNK:HA	1.90	0.52
1:B:1387:UNK:HA	1:B:1394:UNK:HA	1.92	0.52
1:B:4094:GLN:HG2	1:B:4108:ILE:HG21	1.91	0.52
1:D:1694:LEU:O	1:D:1698:LEU:HG	2.10	0.52
1:C:1677:GLY:HA3	1:C:1721:GLU:HG2	1.90	0.52
1:A:1148:VAL:HB	1:A:1165:ASN:HA	1.91	0.52
1:A:4874:MET:O	1:A:4875:LYS:CB	2.44	0.52
1:A:4966:ASP:OD1	1:A:4966:ASP:N	2.43	0.52
1:B:650:VAL:O	1:B:777:PHE:N	2.42	0.52
1:D:650:VAL:O	1:D:777:PHE:N	2.36	0.52
1:D:3658:LYS:HA	1:D:3661:TRP:CD2	2.45	0.52
1:D:3767:GLN:HE22	1:D:3809:ASN:HD21	1.57	0.52
1:D:4079:ASP:N	1:D:4079:ASP:OD1	2.42	0.52
1:C:3760:LYS:HE3	1:C:3764:LEU:HB2	1.91	0.52
1:A:3733:CYS:SG	1:A:3803:SER:HB3	2.50	0.52
1:B:3753:PHE:HZ	1:B:4719:PHE:CZ	2.28	0.52
1:B:3754:GLU:CD	1:B:3754:GLU:H	2.14	0.52
1:B:4826:ILE:O	1:B:4829:SER:OG	2.25	0.52
1:D:3935:TRP:O	1:D:3938:SER:OG	2.24	0.52
1:C:591:ASP:O	1:C:1594:ARG:NH1	2.38	0.52
1:A:1808:ARG:NH1	1:A:1858:ASP:OD2	2.43	0.51
1:A:3888:LEU:HD12	1:A:3891:LEU:HD12	1.92	0.51
1:B:647:ASN:ND2	1:B:820:ARG:O	2.33	0.51
1:D:3698:LEU:CD2	1:D:3770:LEU:O	2.59	0.51
1:D:3959:LYS:HB2	1:D:4019:LEU:HD12	1.92	0.51
1:C:4017:LEU:HD13	1:C:4020:GLN:NE2	2.25	0.51
1:C:4574:ASN:HA	1:C:4577:LEU:HD12	1.92	0.51
1:A:733:PRO:HD2	1:A:763:PRO:HD2	1.92	0.51
1:A:4060:LYS:O	1:A:4064:MET:HG2	2.10	0.51
1:B:181:HIS:CG	1:B:196:MET:HB2	2.45	0.51
1:B:1382:UNK:O	1:B:1399:UNK:N	2.43	0.51
1:B:4231:MET:HA	1:B:4234:PHE:HB3	1.93	0.51

Continued on next page...

Continued from previous page...

Atom-1	Atom-2	Interatomic distance (Å)	Clash overlap (Å)
1:D:1152:MET:HB3	1:D:1161:ILE:HB	1.92	0.51
1:D:3198:UNK:O	1:D:3200:UNK:N	2.44	0.51
1:C:169:LEU:HD21	1:C:202:MET:HG2	1.92	0.51
1:C:3771:HIS:O	1:C:3775:ALA:N	2.43	0.51
1:D:627:PRO:O	1:D:629:ARG:NH1	2.43	0.51
1:C:3658:LYS:HD2	1:C:3661:TRP:CZ3	2.46	0.51
1:A:556:ALA:HB1	1:A:560:ILE:HG23	1.92	0.51
1:A:1101:ARG:HB3	1:A:1123:VAL:HG21	1.91	0.51
1:A:1243:PRO:HB2	1:A:1600:LEU:HD13	1.92	0.51
1:A:3999:MET:O	1:A:4003:LEU:HB3	2.10	0.51
1:D:4690:GLU:HG2	1:D:4691:GLN:H	1.76	0.51
1:C:3888:LEU:HD12	1:C:3891:LEU:HD12	1.92	0.51
1:A:3737:GLU:CA	1:A:3763:LEU:CD1	2.79	0.51
1:A:3877:ASP:HB3	1:A:3881:THR:HG23	1.91	0.51
1:B:16:THR:OG1	1:B:97:GLY:O	2.27	0.51
1:B:35:LEU:HD13	1:B:49:LEU:HD13	1.92	0.51
1:B:1694:LEU:O	1:B:1698:LEU:HG	2.11	0.51
1:B:1721:GLU:OE1	1:B:1725:ARG:NH1	2.41	0.51
1:B:2096:GLU:O	1:B:2100:HIS:ND1	2.35	0.51
1:B:3766:GLN:OE1	1:B:3766:GLN:HA	2.10	0.51
1:D:759:ILE:HG13	1:D:760:ASN:H	1.76	0.51
1:D:1041:GLN:HA	1:D:1044:ARG:HH11	1.75	0.51
1:D:1196:PRO:O	1:D:1198:GLN:NE2	2.37	0.51
1:C:1664:SER:HB3	1:C:1706:PRO:HB3	1.93	0.51
1:A:3986:TRP:HA	1:A:3989:VAL:HG12	1.92	0.51
1:A:4914:VAL:HG23	1:B:4888:TYR:HD1	1.76	0.51
1:B:4867:GLU:O	1:B:4868:ASP:C	2.46	0.51
1:C:162:LYS:O	1:C:164:ARG:NH1	2.44	0.51
1:C:1931:LEU:HD22	1:C:1935:VAL:HG11	1.93	0.51
1:A:594:GLY:H	1:A:1594:ARG:HD2	1.75	0.51
1:A:3937:TYR:OH	1:A:3944:GLU:OE2	2.29	0.51
1:D:154:SER:OG	1:D:155:LYS:N	2.44	0.51
1:D:206:CYS:HB2	1:D:271:GLY:HA3	1.93	0.51
1:D:232:THR:HB	1:D:252:VAL:HG11	1.91	0.51
1:D:292:ALA:HB2	1:D:312:THR:HG22	1.93	0.51
1:D:4666:VAL:CG2	1:D:4783:ILE:HD11	2.39	0.51
1:C:1808:ARG:NH1	1:C:1858:ASP:OD2	2.43	0.51
1:C:1841:VAL:O	1:C:1845:VAL:HG23	2.11	0.51
1:C:4567:LEU:HD12	1:C:4816:ILE:HG22	1.92	0.51
1:A:61:ASP:OD2	1:A:402:ARG:NH2	2.42	0.51
1:A:292:ALA:HB2	1:A:312:THR:HG22	1.91	0.51

Continued on next page...

Continued from previous page...

Atom-1	Atom-2	Interatomic distance (Å)	Clash overlap (Å)
1:A:3198:UNK:O	1:A:3200:UNK:N	2.43	0.51
1:A:4944:ARG:NE	1:D:4942:GLU:OE2	2.44	0.51
1:C:977:LEU:HB3	1:C:1047:LEU:HD11	1.91	0.51
1:C:1936:LYS:HB2	1:C:2116:LEU:HD11	1.93	0.51
1:A:1101:ARG:NH2	1:A:1114:GLU:OE2	2.44	0.51
1:A:4865:LYS:CB	1:A:4873:ASP:OD2	2.59	0.51
1:B:4198:SER:OG	1:B:4199:GLU:N	2.44	0.51
1:D:3674:ILE:CB	1:D:3769:ARG:HH21	2.07	0.51
1:A:1383:UNK:HA	1:A:1398:UNK:HA	1.93	0.51
1:B:1384:UNK:N	1:B:1397:UNK:O	2.44	0.51
1:B:4786:ASP:OD2	1:B:4788:SER:OG	2.24	0.51
1:D:206:CYS:SG	1:D:207:SER:N	2.84	0.51
1:D:647:ASN:ND2	1:D:820:ARG:O	2.33	0.51
1:C:3733:CYS:SG	1:C:3803:SER:HB3	2.51	0.51
1:A:1829:PRO:HB2	1:A:1837:GLN:HB2	1.93	0.50
1:A:2207:VAL:O	1:A:2210:VAL:HG12	2.10	0.50
1:A:2305:CYS:O	1:A:2324:ASN:ND2	2.45	0.50
1:B:793:LEU:HD13	1:B:821:LEU:HD13	1.92	0.50
1:D:3726:ALA:HA	1:D:3729:MET:HE3	1.93	0.50
1:C:154:SER:OG	1:C:155:LYS:N	2.44	0.50
1:B:110:ARG:HA	1:B:117:TYR:HA	1.93	0.50
1:B:894:GLY:HA3	1:B:903:LEU:HB3	1.94	0.50
1:B:2736:ASP:N	1:B:2736:ASP:OD1	2.44	0.50
1:D:2740:VAL:HG11	1:D:2815:ALA:HB2	1.93	0.50
1:C:1717:SER:HA	1:C:1720:LEU:HD22	1.93	0.50
1:A:3946:GLN:HA	1:A:3949:ARG:HG2	1.93	0.50
1:D:210:GLU:OE1	1:D:273:HIS:NE2	2.32	0.50
1:D:880:GLU:OE2	1:D:965:TYR:CZ	2.64	0.50
1:D:4985:LEU:HB2	2:D:5101:ACP:HN61	1.75	0.50
1:A:4069:LYS:HD2	1:A:4133:GLN:HG2	1.94	0.50
1:B:154:SER:OG	1:B:155:LYS:N	2.45	0.50
1:B:3733:CYS:SG	1:B:3803:SER:HB3	2.50	0.50
1:D:1106:ARG:HD2	1:D:1120:LEU:HD13	1.93	0.50
1:A:793:LEU:HD13	1:A:821:LEU:HD13	1.94	0.50
1:A:3850:GLN:NE2	1:A:3870:ASN:O	2.44	0.50
1:B:4045:VAL:HG22	1:B:4160:LEU:HD21	1.93	0.50
1:C:330:ASP:OD1	1:C:330:ASP:N	2.43	0.50
1:C:1382:UNK:O	1:C:1399:UNK:N	2.44	0.50
1:A:1936:LYS:HB2	1:A:2116:LEU:HD11	1.93	0.50
1:B:1653:LEU:HD21	1:B:1660:GLN:HA	1.94	0.50
1:B:3761:GLN:HE22	1:B:4750:ILE:HD12	1.75	0.50

Continued on next page...

Continued from previous page...

Atom-1	Atom-2	Interatomic distance (Å)	Clash overlap (Å)
1:B:4060:LYS:O	1:B:4064:MET:HG2	2.12	0.50
1:D:284:HIS:HB3	1:D:287:THR:HB	1.94	0.50
1:D:745:SER:OG	1:D:758:ARG:O	2.21	0.50
1:D:4666:VAL:CG2	1:D:4783:ILE:HD12	2.40	0.50
1:C:100:THR:HB	1:C:162:LYS:HE2	1.92	0.50
1:C:1148:VAL:O	1:C:1165:ASN:N	2.43	0.50
1:C:1163:THR:HG22	1:C:1168:VAL:HA	1.94	0.50
1:A:638:ILE:HD12	1:A:1638:ALA:HB3	1.94	0.50
1:A:1838:PHE:HD2	1:A:1935:VAL:HG21	1.77	0.50
1:D:2207:VAL:HG13	1:D:2232:CYS:HB2	1.94	0.50
1:C:1115:LEU:HD12	1:C:1193:SER:HB3	1.94	0.50
1:C:4222:VAL:HG11	1:C:4950:VAL:HA	1.93	0.50
1:C:4870:ASP:OD2	1:C:4872:PRO:CD	2.59	0.50
1:A:3765:TYR:CZ	1:A:4751:THR:HG22	2.46	0.50
1:A:4059:LEU:HA	1:A:4062:PHE:HD2	1.77	0.50
1:A:4242:ILE:HD12	1:A:4993:MET:HB2	1.93	0.50
1:B:1115:LEU:HB3	1:B:1123:VAL:HG11	1.94	0.50
1:B:4921:PHE:CD1	1:B:4921:PHE:C	2.85	0.50
1:D:684:VAL:HG12	1:D:781:VAL:HG23	1.93	0.50
1:C:331:VAL:HG12	1:C:333:GLY:H	1.77	0.50
1:A:206:CYS:SG	1:A:207:SER:N	2.85	0.50
1:B:615:ARG:NH1	1:B:1676:LEU:O	2.41	0.50
1:B:3794:VAL:HG11	1:B:3835:LEU:HD11	1.93	0.50
1:D:649:PHE:HB3	1:D:776:LEU:HD13	1.94	0.50
1:D:1936:LYS:HB2	1:D:2116:LEU:HD11	1.93	0.50
1:D:4958:CYS:SG	1:D:4978:HIS:HD2	2.35	0.50
1:C:4985:LEU:CB	2:C:5101:ACP:HN61	2.24	0.50
1:B:533:ASN:ND2	1:B:536:ASN:OD1	2.45	0.49
1:B:883:ALA:H	1:B:886:ARG:H	1.60	0.49
1:B:1808:ARG:NH1	1:B:1858:ASP:OD2	2.45	0.49
1:B:3781:GLN:O	1:B:3784:SER:OG	2.29	0.49
1:B:4567:LEU:HD12	1:B:4816:ILE:HG22	1.94	0.49
1:D:894:GLY:HA3	1:D:903:LEU:HB3	1.94	0.49
1:D:1731:LEU:O	1:D:1772:ARG:NH2	2.43	0.49
1:A:894:GLY:HA3	1:A:903:LEU:HB3	1.94	0.49
1:A:2207:VAL:HG21	1:A:2235:PHE:HE2	1.75	0.49
1:B:1079:LYS:NZ	1:B:1107:PRO:O	2.46	0.49
1:D:977:LEU:HD12	1:D:978:THR:N	2.27	0.49
1:D:3711:THR:O	1:D:3713:LYS:NZ	2.39	0.49
1:D:3962:PHE:O	1:D:3966:THR:HG23	2.12	0.49
1:D:4182:GLU:O	1:D:4988:TYR:OH	2.26	0.49

Continued on next page...

Continued from previous page...

Atom-1	Atom-2	Interatomic distance (Å)	Clash overlap (Å)
1:C:1103:GLY:HA3	1:C:1123:VAL:HA	1.94	0.49
1:C:4138:ASP:O	1:C:4142:ASN:ND2	2.43	0.49
1:A:207:SER:OG	1:A:208:CYS:N	2.45	0.49
1:A:4873:ASP:O	1:A:4874:MET:HB2	2.11	0.49
1:B:1243:PRO:HB2	1:B:1600:LEU:HD13	1.92	0.49
1:D:106:ALA:HA	1:D:149:THR:HA	1.94	0.49
1:D:1229:ASN:HB3	1:D:1826:ALA:HB1	1.94	0.49
1:C:2280:VAL:HG11	1:C:2290:LEU:HD12	1.94	0.49
1:B:2280:VAL:HG11	1:B:2290:LEU:HD12	1.94	0.49
1:B:4828:SER:HA	1:B:4831:THR:HG22	1.93	0.49
1:D:275:ARG:NH2	1:D:327:PRO:O	2.44	0.49
1:D:2271:THR:HG22	1:D:2273:LEU:H	1.77	0.49
1:A:2208:MET:O	1:A:2212:VAL:HG13	2.12	0.49
1:A:4204:GLN:HB3	1:A:4245:MET:HE1	1.94	0.49
1:D:615:ARG:NH1	1:D:1676:LEU:O	2.34	0.49
1:D:4017:LEU:HD13	1:D:4020:GLN:NE2	2.22	0.49
1:A:1695:LEU:HA	1:A:1698:LEU:HD23	1.93	0.49
1:B:206:CYS:HB2	1:B:271:GLY:HA3	1.93	0.49
1:B:475:GLN:HG2	1:B:529:LEU:HD12	1.95	0.49
1:D:150:MET:HG2	1:D:169:LEU:HD13	1.95	0.49
1:D:4101:LYS:O	1:D:4102:GLN:HG2	2.12	0.49
1:D:4134:GLU:HB2	1:D:4135:PRO:HD3	1.95	0.49
1:D:4162:ASN:O	1:D:4166:LEU:HB2	2.13	0.49
1:C:255:HIS:HB3	1:C:480:GLU:HG3	1.94	0.49
1:C:615:ARG:NH1	1:C:1676:LEU:O	2.40	0.49
1:A:426:ARG:HA	1:A:431:PRO:HB3	1.95	0.49
1:A:1221:GLU:HB3	1:A:1223:PHE:HD1	1.77	0.49
1:B:317:ARG:HH12	1:B:323:LEU:HB3	1.77	0.49
1:D:491:ILE:O	1:D:495:ASN:HB2	2.13	0.49
1:D:4865:LYS:CB	1:D:4873:ASP:OD2	2.61	0.49
1:C:120:CYS:HA	1:C:136:GLY:H	1.77	0.49
1:C:719:LEU:HD13	1:C:735:GLN:HG2	1.95	0.49
1:C:1680:ARG:NH2	1:C:1785:ALA:O	2.45	0.49
1:C:1732:SER:OG	1:C:2140:ARG:NH2	2.45	0.49
1:C:4079:ASP:OD1	1:C:4079:ASP:N	2.46	0.49
1:A:953:THR:OG1	1:A:969:PRO:O	2.23	0.49
1:A:1095:VAL:HB	1:A:1199:VAL:HG13	1.93	0.49
1:B:34:LYS:H	1:B:53:SER:HG	1.55	0.49
1:B:759:ILE:HG13	1:B:760:ASN:H	1.78	0.49
1:D:3733:CYS:SG	1:D:3803:SER:HB3	2.52	0.49
1:C:206:CYS:SG	1:C:207:SER:N	2.84	0.49

Continued on next page...

Continued from previous page...

Atom-1	Atom-2	Interatomic distance (Å)	Clash overlap (Å)
1:C:315:CYS:SG	1:C:316:PHE:N	2.85	0.49
1:A:580:GLU:HG2	1:A:583:ILE:HD11	1.95	0.49
1:A:4079:ASP:OD1	1:A:4080:TYR:N	2.46	0.49
1:B:669:ASP:N	1:B:669:ASP:OD1	2.45	0.49
1:B:3986:TRP:HD1	1:B:4047:MET:HG3	1.78	0.49
1:B:4673:ARG:HH22	1:B:4698:LYS:HB2	1.78	0.49
1:D:957:LYS:HA	1:D:966:LYS:NZ	2.28	0.49
1:D:4703:ARG:HA	1:D:4706:LEU:HD12	1.94	0.49
1:C:2191:PHE:HZ	1:C:2239:PHE:HB2	1.76	0.49
1:A:891:TRP:HE3	1:A:904:HIS:HB2	1.78	0.49
1:A:1079:LYS:NZ	1:A:1107:PRO:O	2.45	0.49
1:A:3658:LYS:HD2	1:A:3661:TRP:CZ3	2.48	0.49
1:B:4853:VAL:O	1:B:4857:ASN:ND2	2.46	0.49
1:D:891:TRP:HE3	1:D:904:HIS:HB2	1.78	0.49
1:C:627:PRO:O	1:C:629:ARG:NH1	2.46	0.49
1:C:1365:UNK:HA	1:C:1403:UNK:HA	1.95	0.49
1:C:4184:MET:HB2	1:C:4190:ILE:HD13	1.94	0.49
1:C:4690:GLU:HG2	1:C:4691:GLN:N	2.27	0.49
1:A:3897:ASN:HD22	1:A:3897:ASN:C	1.99	0.48
1:A:3977:GLN:NE2	1:A:4030:LEU:O	2.45	0.48
1:B:315:CYS:SG	1:B:316:PHE:N	2.86	0.48
1:B:2214:VAL:HG13	1:B:2215:LEU:HD23	1.94	0.48
1:D:331:VAL:HG12	1:D:333:GLY:H	1.78	0.48
1:D:977:LEU:HD12	1:D:978:THR:HG22	1.94	0.48
1:C:556:ALA:HB1	1:C:560:ILE:HG12	1.95	0.48
1:C:2285:GLU:HG3	1:C:2286:LEU:HG	1.94	0.48
1:C:4240:ASP:OD1	1:C:4668:LEU:HD11	2.12	0.48
1:D:2291:GLN:O	1:D:2292:GLU:HG3	2.12	0.48
1:A:1288:UNK:HA	1:A:1327:UNK:HA	1.94	0.48
1:B:20:VAL:HG11	1:B:202:MET:HB3	1.94	0.48
1:B:2042:CYS:SG	1:B:2043:GLY:N	2.84	0.48
1:D:831:ARG:HD2	1:D:838:HIS:HB2	1.96	0.48
1:C:4198:SER:HB3	1:C:4201:ASN:HB2	1.94	0.48
1:A:3773:ARG:HA	1:A:3815:LYS:HE3	1.95	0.48
1:A:4892:ARG:HH22	1:D:4898:GLY:H	1.61	0.48
1:D:315:CYS:SG	1:D:316:PHE:N	2.86	0.48
1:D:594:GLY:H	1:D:1594:ARG:HD2	1.78	0.48
1:C:4870:ASP:OD2	1:C:4872:PRO:HD3	2.13	0.48
1:C:4904:PRO:HB3	1:C:4913:ARG:HG2	1.96	0.48
1:A:134:ASP:N	1:A:134:ASP:OD1	2.46	0.48
1:A:1229:ASN:HB3	1:A:1826:ALA:HB1	1.95	0.48

Continued on next page...

Continued from previous page...

Atom-1	Atom-2	Interatomic distance (Å)	Clash overlap (Å)
1:A:3941:ASP:N	1:A:3941:ASP:OD1	2.44	0.48
1:B:3773:ARG:HA	1:B:3815:LYS:HE3	1.96	0.48
1:D:289:ARG:HG2	1:D:303:ASP:HA	1.95	0.48
1:D:1340:UNK:HA	1:D:1353:UNK:HA	1.95	0.48
1:D:1717:SER:HA	1:D:1720:LEU:HD22	1.95	0.48
1:C:2198:MET:HA	1:C:2203:MET:HE1	1.95	0.48
1:C:4874:MET:C	1:C:4876:CYS:N	2.66	0.48
1:A:4794:TRP:HH2	1:A:4811:ALA:HB1	1.78	0.48
1:D:4666:VAL:CG1	1:D:4667:PRO:CD	2.91	0.48
1:D:4918:ILE:HG22	1:D:4922:PHE:CE1	2.49	0.48
1:C:4865:LYS:N	1:C:4873:ASP:OD2	2.46	0.48
1:B:4920:PHE:CD1	1:B:4920:PHE:C	2.85	0.48
1:D:755:ILE:HD13	1:D:768:PHE:HB2	1.96	0.48
1:C:567:VAL:HG13	1:C:568:LEU:HD12	1.96	0.48
1:C:1749:PRO:HB3	1:C:1760:HIS:HA	1.95	0.48
1:C:4017:LEU:HA	1:C:4020:GLN:HE21	1.78	0.48
1:A:192:ASP:N	1:A:192:ASP:OD1	2.47	0.48
1:A:686:TRP:CE3	1:A:777:PHE:HB3	2.48	0.48
1:A:4922:PHE:HD1	1:B:4892:ARG:HH12	1.62	0.48
1:D:2736:ASP:OD1	1:D:2736:ASP:N	2.46	0.48
1:C:758:ARG:HH22	1:C:804:PRO:HA	1.79	0.48
1:C:3941:ASP:N	1:C:3941:ASP:OD1	2.45	0.48
1:C:4688:ILE:HD11	1:C:4737:ILE:HD12	1.96	0.48
1:A:2280:VAL:HG11	1:A:2290:LEU:HD12	1.96	0.48
1:A:4732:PHE:HB3	1:A:4736:ARG:HH11	1.79	0.48
1:B:3809:ASN:HB3	1:B:3812:VAL:HG22	1.95	0.48
1:D:4909:TYR:HB3	1:D:4912:TYR:HB2	1.95	0.48
1:C:1288:UNK:HA	1:C:1327:UNK:HA	1.96	0.48
1:C:3766:GLN:HA	1:C:3769:ARG:NH1	2.29	0.48
1:B:891:TRP:HE3	1:B:904:HIS:HB2	1.78	0.48
1:B:2332:LEU:HD22	1:B:2432:LEU:HD22	1.96	0.48
1:B:4690:GLU:HG2	1:B:4691:GLN:H	1.79	0.48
1:D:20:VAL:HG11	1:D:202:MET:HB3	1.96	0.48
1:D:911:HIS:O	1:D:918:ARG:NH2	2.47	0.48
1:D:1115:LEU:HB3	1:D:1123:VAL:HG11	1.95	0.48
1:D:4006:ASP:OD2	1:D:4009:GLN:NE2	2.47	0.48
1:C:500:ALA:HA	1:C:504:ALA:HB3	1.96	0.48
1:C:695:TYR:HB3	1:C:1240:LYS:HZ2	1.79	0.48
1:C:3652:MET:HA	1:C:3655:GLU:HG2	1.96	0.48
1:A:2207:VAL:HG12	1:A:2211:MET:HE1	1.95	0.47
1:A:4985:LEU:HG	2:A:5101:ACP:HN61	1.79	0.47

Continued on next page...

Continued from previous page...

Atom-1	Atom-2	Interatomic distance (Å)	Clash overlap (Å)
1:B:207:SER:OG	1:B:208:CYS:N	2.46	0.47
1:B:4843:LEU:HA	1:B:4846:VAL:HG12	1.96	0.47
1:D:1677:GLY:N	1:D:1721:GLU:HG2	2.29	0.47
1:D:3874:VAL:HG12	1:D:3875:MET:HG2	1.95	0.47
1:D:4673:ARG:HH22	1:D:4698:LYS:HB2	1.79	0.47
1:C:138:GLN:HG2	1:C:139:GLU:H	1.79	0.47
1:C:173:SER:HB3	1:C:178:ARG:H	1.79	0.47
1:C:745:SER:OG	1:C:758:ARG:O	2.28	0.47
1:C:4703:ARG:HA	1:C:4706:LEU:HD12	1.95	0.47
1:C:4892:ARG:H	1:C:4892:ARG:HD3	1.79	0.47
1:A:911:HIS:O	1:A:918:ARG:NH2	2.47	0.47
1:A:913:LEU:O	1:A:918:ARG:NH2	2.48	0.47
1:A:3817:LEU:HD12	1:A:3899:PHE:HD1	1.78	0.47
1:A:4223:ASN:OD1	1:A:4224:GLU:N	2.48	0.47
1:B:911:HIS:O	1:B:918:ARG:NH2	2.47	0.47
1:B:1839:VAL:HG22	1:B:1840:PRO:HD2	1.95	0.47
1:B:3962:PHE:O	1:B:3966:THR:HG23	2.14	0.47
1:D:660:GLY:HA2	1:D:750:LEU:HB2	1.96	0.47
1:D:2182:ILE:O	1:D:2185:ILE:HG22	2.14	0.47
1:D:4661:TYR:HH	1:D:4788:SER:HG	1.48	0.47
1:C:52:THR:HA	1:C:60:PRO:HG3	1.96	0.47
1:C:4966:ASP:OD1	1:C:4966:ASP:N	2.46	0.47
1:A:131:LEU:HD22	1:A:178:ARG:HH22	1.79	0.47
1:A:3962:PHE:O	1:A:3966:THR:HG23	2.14	0.47
1:A:4909:TYR:HB3	1:A:4912:TYR:HB2	1.97	0.47
1:D:1679:ASN:ND2	1:D:1798:LEU:O	2.47	0.47
1:C:192:ASP:N	1:C:192:ASP:OD1	2.46	0.47
1:C:289:ARG:NE	1:C:303:ASP:OD1	2.38	0.47
1:C:894:GLY:HA3	1:C:903:LEU:HB3	1.96	0.47
1:C:2131:LEU:HD13	1:C:3662:ILE:HG21	1.95	0.47
1:B:206:CYS:SG	1:B:207:SER:N	2.86	0.47
1:B:1247:PRO:HA	1:B:1598:GLN:HG3	1.95	0.47
1:B:4134:GLU:HG2	1:B:4135:PRO:HD3	1.96	0.47
1:B:4703:ARG:HA	1:B:4706:LEU:HD12	1.97	0.47
1:D:192:ASP:OD1	1:D:192:ASP:N	2.47	0.47
1:D:348:VAL:HG13	1:D:357:LEU:HB2	1.96	0.47
1:D:1707:LEU:HG	1:D:1708:ARG:N	2.17	0.47
1:C:945:LYS:O	1:C:949:ASN:ND2	2.46	0.47
1:C:1166:GLY:HA2	1:C:1216:ILE:HD11	1.97	0.47
1:C:4863:TYR:N	1:C:4863:TYR:CD1	2.78	0.47
1:A:4170:ILE:HG23	1:A:4171:LEU:HD12	1.96	0.47

Continued on next page...

Continued from previous page...

Atom-1	Atom-2	Interatomic distance (Å)	Clash overlap (Å)
1:B:23:GLN:HE21	1:B:34:LYS:HB3	1.80	0.47
1:B:1150:GLY:O	1:B:1163:THR:OG1	2.29	0.47
1:B:3756:LYS:NZ	1:B:3760:LYS:HE3	2.30	0.47
1:D:111:HIS:CE1	1:D:113:HIS:HB3	2.50	0.47
1:D:1079:LYS:NZ	1:D:1107:PRO:O	2.48	0.47
1:C:1727:ARG:HH12	1:C:1773:PRO:HD2	1.80	0.47
1:C:4875:LYS:HE2	1:C:4875:LYS:CA	2.43	0.47
1:B:221:ARG:NH2	1:B:255:HIS:O	2.44	0.47
1:B:913:LEU:O	1:B:918:ARG:NH2	2.48	0.47
1:B:2182:ILE:O	1:B:2185:ILE:HG22	2.14	0.47
1:D:4222:VAL:HG11	1:D:4950:VAL:HA	1.97	0.47
1:C:348:VAL:HG13	1:C:357:LEU:HB2	1.96	0.47
1:C:2674:UNK:O	1:C:2676:UNK:N	2.47	0.47
1:C:4791:TYR:OH	1:C:4815:ASP:O	2.27	0.47
1:A:169:LEU:HD21	1:A:202:MET:HG2	1.95	0.47
1:A:707:VAL:HB	1:A:713:SER:HB2	1.95	0.47
1:A:1717:SER:HA	1:A:1720:LEU:HD22	1.97	0.47
1:A:3969:ILE:HG21	1:A:4030:LEU:HA	1.96	0.47
1:B:838:HIS:HA	1:B:1201:HIS:HB3	1.97	0.47
1:B:4006:ASP:OD2	1:B:4009:GLN:NE2	2.48	0.47
1:D:580:GLU:HG2	1:D:583:ILE:HD11	1.97	0.47
1:D:973:SER:HA	1:D:1044:ARG:HH21	1.80	0.47
1:D:1770:SER:OG	1:D:1956:GLU:OE2	2.24	0.47
1:D:3767:GLN:NE2	1:D:3809:ASN:HD21	2.11	0.47
1:D:3927:GLN:HB2	1:D:3992:PHE:CE2	2.49	0.47
1:D:3941:ASP:OD1	1:D:3941:ASP:N	2.46	0.47
1:D:4794:TRP:HA	1:D:4797:VAL:HG22	1.97	0.47
1:C:134:ASP:N	1:C:134:ASP:OD1	2.47	0.47
1:C:3962:PHE:O	1:C:3966:THR:HG23	2.15	0.47
1:A:1106:ARG:HD2	1:A:1120:LEU:HD13	1.97	0.47
1:A:1839:VAL:HG13	1:A:1841:VAL:HG23	1.95	0.47
1:B:348:VAL:HG13	1:B:357:LEU:HB2	1.95	0.47
1:B:4702:ASP:N	1:B:4702:ASP:OD1	2.48	0.47
1:D:626:LEU:HD12	1:D:627:PRO:HD2	1.96	0.47
1:D:1859:VAL:HA	1:D:1862:ILE:HG22	1.95	0.47
1:D:3845:ASN:O	1:D:3849:ARG:HG2	2.15	0.47
1:D:4582:VAL:HG12	1:C:4877:ASP:HA	1.96	0.47
1:C:4696:ASP:O	1:C:4699:GLY:N	2.43	0.47
1:A:950:LEU:HD13	1:A:970:LEU:HD13	1.96	0.47
1:A:1651:LEU:HD13	1:A:1702:HIS:HE1	1.80	0.47
1:A:1728:ARG:HA	1:A:1731:LEU:HG	1.97	0.47

Continued on next page...

Continued from previous page...

Atom-1	Atom-2	Interatomic distance (Å)	Clash overlap (Å)
1:A:2736:ASP:OD1	1:A:2736:ASP:N	2.47	0.47
1:B:668:VAL:HG22	1:B:789:VAL:HA	1.96	0.47
1:B:1707:LEU:O	1:B:1709:ALA:N	2.48	0.47
1:D:162:LYS:O	1:D:164:ARG:NH1	2.48	0.47
1:D:733:PRO:HD2	1:D:763:PRO:HD2	1.97	0.47
1:D:959:TYR:HB2	1:D:966:LYS:HD3	1.95	0.47
2:D:5101:ACP:H5'1	2:D:5101:ACP:O1B	2.15	0.47
1:C:292:ALA:HB2	1:C:312:THR:HG22	1.96	0.47
1:C:896:VAL:HG13	1:C:903:LEU:HD13	1.97	0.47
1:C:5013:MET:SD	1:C:5018:CYS:HB3	2.55	0.47
1:A:154:SER:OG	1:A:155:LYS:N	2.47	0.47
1:A:4034:ASN:HD22	1:A:4040:ILE:HB	1.80	0.47
1:A:4198:SER:HB3	1:A:4201:ASN:HB2	1.95	0.47
1:B:323:LEU:H	1:B:323:LEU:HD23	1.80	0.47
1:B:977:LEU:HD12	1:B:1043:VAL:HB	1.95	0.47
1:B:4887:MET:HA	1:B:4887:MET:HE2	1.97	0.47
1:D:118:LEU:HA	1:D:137:LEU:HB3	1.97	0.47
1:D:3969:ILE:HG21	1:D:4030:LEU:HA	1.96	0.47
1:C:4875:LYS:HD2	1:C:4875:LYS:H	1.79	0.47
1:A:138:GLN:HG2	1:A:139:GLU:H	1.79	0.46
1:B:755:ILE:HB	1:B:768:PHE:HB2	1.97	0.46
1:B:1041:GLN:HA	1:B:1044:ARG:HH11	1.80	0.46
1:D:888:GLU:C	1:D:890:GLY:H	2.17	0.46
1:D:4707:ASN:ND2	1:D:4740:LEU:O	2.48	0.46
1:D:5000:GLU:HA	1:D:5003:HIS:CD2	2.50	0.46
1:C:111:HIS:CE1	1:C:113:HIS:HB3	2.50	0.46
1:A:118:LEU:HA	1:A:137:LEU:HB3	1.96	0.46
1:A:315:CYS:SG	1:A:316:PHE:N	2.88	0.46
1:A:867:LEU:HD21	1:A:939:VAL:HG21	1.98	0.46
1:A:4879:MET:SD	1:B:4578:LEU:HD12	2.55	0.46
1:B:331:VAL:HG12	1:B:333:GLY:H	1.79	0.46
1:B:4155:PRO:HG3	1:B:5036:LEU:HD22	1.96	0.46
1:D:708:GLY:HA3	1:D:722:TRP:HB3	1.96	0.46
1:D:4138:ASP:OD1	1:D:4138:ASP:N	2.46	0.46
1:C:118:LEU:HA	1:C:137:LEU:HB3	1.96	0.46
1:C:1980:LEU:HD23	1:C:1980:LEU:H	1.80	0.46
1:A:206:CYS:HB2	1:A:271:GLY:HA3	1.96	0.46
1:A:1079:LYS:HA	1:A:1189:LEU:HD11	1.96	0.46
1:B:61:ASP:OD2	1:B:402:ARG:NH2	2.48	0.46
1:B:1717:SER:HA	1:B:1720:LEU:HD22	1.96	0.46
1:B:2447:LYS:HG3	1:B:2449:GLU:H	1.80	0.46

Continued on next page...

Continued from previous page...

Atom-1	Atom-2	Interatomic distance (Å)	Clash overlap (Å)
1:B:3883:ASP:OD1	1:B:3884:LEU:N	2.48	0.46
1:C:348:VAL:HG22	1:C:357:LEU:HD13	1.97	0.46
1:C:869:ARG:NH1	1:C:870:ILE:HB	2.30	0.46
1:C:1384:UNK:N	1:C:1397:UNK:O	2.48	0.46
1:C:2740:VAL:HG21	1:C:2815:ALA:HA	1.97	0.46
1:C:3977:GLN:NE2	1:C:4030:LEU:O	2.47	0.46
1:C:4892:ARG:HG2	1:C:4892:ARG:HH11	1.81	0.46
1:A:523:TYR:O	1:A:526:LEU:HG	2.15	0.46
1:A:1119:GLU:HG2	1:A:1134:LEU:HD21	1.96	0.46
1:A:5011:TRP:NE1	1:A:5015:GLN:OE1	2.49	0.46
1:B:1859:VAL:HA	1:B:1862:ILE:HG22	1.96	0.46
1:B:3780:LEU:HA	1:B:3783:ILE:HG22	1.97	0.46
1:B:4909:TYR:HB3	1:B:4912:TYR:HB2	1.97	0.46
1:D:340:LYS:O	1:D:344:SER:OG	2.30	0.46
1:D:533:ASN:ND2	1:D:536:ASN:OD1	2.49	0.46
1:C:3877:ASP:HB3	1:C:3881:THR:HG23	1.97	0.46
1:A:3737:GLU:HA	1:A:3763:LEU:HD21	1.98	0.46
1:A:5013:MET:SD	1:A:5018:CYS:HB3	2.56	0.46
1:D:2025:GLU:HA	1:D:2028:ARG:HE	1.81	0.46
1:D:4013:LEU:O	1:D:4017:LEU:HD23	2.15	0.46
1:D:4985:LEU:CB	2:D:5101:ACP:HN61	2.28	0.46
1:C:322:LYS:HE3	1:C:322:LYS:HA	1.97	0.46
1:C:895:PRO:HA	1:C:905:PRO:HG3	1.97	0.46
1:C:1159:THR:HG23	1:C:1178:ALA:HA	1.98	0.46
1:C:1211:LEU:HB3	1:C:1214:PHE:CD2	2.50	0.46
1:C:4227:GLU:HB2	1:C:4229:GLU:HG2	1.97	0.46
1:A:275:ARG:NH1	1:A:278:GLN:HB2	2.30	0.46
1:A:1866:ILE:HD11	1:A:1926:LEU:HD23	1.97	0.46
1:B:2203:MET:SD	1:B:2203:MET:N	2.86	0.46
1:B:2458:ARG:NH2	1:B:2509:UNK:O	2.43	0.46
1:B:4069:LYS:HB2	1:B:4133:GLN:HG3	1.98	0.46
1:B:5000:GLU:HA	1:B:5003:HIS:CD2	2.51	0.46
1:D:913:LEU:O	1:D:918:ARG:NH2	2.48	0.46
1:D:1697:ALA:HB1	1:D:1708:ARG:HD2	1.97	0.46
1:D:2740:VAL:HG21	1:D:2815:ALA:HA	1.96	0.46
1:D:2761:TYR:OH	1:D:2925:GLU:OE1	2.33	0.46
1:C:541:SER:HA	1:C:574:VAL:HG22	1.97	0.46
1:C:3883:ASP:OD1	1:C:3884:LEU:N	2.49	0.46
1:A:1384:UNK:O	1:A:1397:UNK:N	2.48	0.46
1:A:2107:GLN:HE22	1:A:3681:GLY:HA2	1.81	0.46
1:A:2740:VAL:HG11	1:A:2815:ALA:HB2	1.97	0.46

Continued on next page...

Continued from previous page...

Atom-1	Atom-2	Interatomic distance (Å)	Clash overlap (Å)
1:B:317:ARG:N	1:B:347:PHE:O	2.36	0.46
1:B:1980:LEU:H	1:B:1980:LEU:HD23	1.80	0.46
1:B:4034:ASN:HD22	1:B:4040:ILE:HB	1.81	0.46
1:D:4666:VAL:HG12	1:D:4667:PRO:CD	2.38	0.46
1:D:4938:ASP:O	1:D:4942:GLU:HG2	2.15	0.46
1:C:64:ILE:HG23	1:C:402:ARG:HH21	1.80	0.46
1:C:3963:ASN:O	1:C:3966:THR:OG1	2.26	0.46
1:C:4999:ASP:OD1	1:C:5001:THR:OG1	2.30	0.46
1:A:3757:GLU:OE1	1:A:4719:PHE:HZ	1.99	0.46
1:A:4759:ASP:OD1	1:A:4759:ASP:N	2.48	0.46
1:B:256:ALA:H	1:B:480:GLU:HG3	1.81	0.46
1:B:762:CYS:SG	1:B:764:VAL:HG23	2.56	0.46
1:B:1340:UNK:HA	1:B:1353:UNK:HA	1.98	0.46
1:B:1728:ARG:HA	1:B:1731:LEU:HG	1.98	0.46
1:D:2125:HIS:NE2	1:D:3724:ALA:HB1	2.31	0.46
1:D:2214:VAL:HG13	1:D:2215:LEU:HD23	1.97	0.46
1:A:4231:MET:HE2	1:A:4231:MET:HA	1.98	0.46
1:A:4843:LEU:HD22	1:A:4928:LEU:HD11	1.97	0.46
1:B:4190:ILE:HG21	1:B:5028:PHE:HB2	1.98	0.46
1:D:172:VAL:HG22	1:D:179:TYR:HD1	1.81	0.46
1:D:3955:MET:CE	1:D:4019:LEU:HD13	2.46	0.46
1:C:1639:LEU:N	1:C:1648:MET:O	2.44	0.46
1:C:4875:LYS:N	1:C:4875:LYS:CD	2.72	0.46
1:A:32:GLN:OE1	1:A:34:LYS:NZ	2.41	0.46
1:A:161:GLU:HB3	1:A:164:ARG:HH12	1.81	0.46
1:A:686:TRP:CD1	1:A:748:LEU:HD11	2.51	0.46
1:A:831:ARG:HD2	1:A:838:HIS:HB2	1.98	0.46
1:A:3808:GLY:O	1:A:3813:GLN:NE2	2.49	0.46
1:B:1679:ASN:ND2	1:B:1798:LEU:O	2.48	0.46
1:D:1980:LEU:H	1:D:1980:LEU:HD23	1.81	0.46
1:D:4901:ILE:HG21	1:D:4913:ARG:HH12	1.80	0.46
1:C:1866:ILE:HG12	1:C:1927:LEU:HD13	1.98	0.46
1:C:2272:PRO:HA	1:C:2275:VAL:HG12	1.97	0.46
1:C:4034:ASN:HD22	1:C:4040:ILE:HB	1.81	0.46
1:B:3877:ASP:HB3	1:B:3881:THR:HG23	1.98	0.45
1:B:4581:LYS:HD2	1:B:4632:LEU:HD22	1.97	0.45
1:B:4837:LEU:HD23	1:B:4935:LEU:HD12	1.97	0.45
1:D:132:ALA:HA	1:D:194:SER:HB3	1.97	0.45
1:D:139:GLU:O	1:D:141:ALA:N	2.48	0.45
1:D:541:SER:HA	1:D:574:VAL:HG22	1.98	0.45
1:D:4581:LYS:HD2	1:D:4632:LEU:HD22	1.98	0.45

Continued on next page...

Continued from previous page...

Atom-1	Atom-2	Interatomic distance (Å)	Clash overlap (Å)
1:D:4666:VAL:HG23	1:D:4783:ILE:CD1	2.46	0.45
1:C:1689:VAL:HG13	1:C:1690:ASP:N	2.31	0.45
1:C:4058:ILE:HG23	1:C:4062:PHE:HE2	1.81	0.45
1:A:4864:ASN:C	1:A:4865:LYS:O	2.54	0.45
1:B:195:PHE:HE1	1:C:2359:ARG:HA	1.81	0.45
1:B:541:SER:HA	1:B:574:VAL:HG22	1.98	0.45
1:B:1103:GLY:HA3	1:B:1123:VAL:HA	1.98	0.45
1:D:265:LEU:HD11	1:D:279:PRO:HG2	1.99	0.45
1:D:626:LEU:HG	1:D:628:GLY:H	1.80	0.45
1:D:1115:LEU:HD11	1:D:1191:VAL:HG21	1.98	0.45
1:D:2025:GLU:HA	1:D:2028:ARG:NE	2.30	0.45
1:A:162:LYS:O	1:A:164:ARG:NH1	2.48	0.45
1:A:220:LEU:HD12	1:A:390:LEU:HB3	1.98	0.45
1:A:1980:LEU:HD23	1:A:1980:LEU:H	1.82	0.45
1:A:3779:VAL:O	1:A:3783:ILE:HG12	2.16	0.45
1:B:484:LEU:O	1:B:488:LEU:HG	2.17	0.45
1:B:2207:VAL:HG13	1:B:2232:CYS:HB2	1.97	0.45
1:B:3561:UNK:O	1:B:3563:UNK:N	2.48	0.45
1:B:4928:LEU:HD13	1:B:4931:ILE:HD11	1.97	0.45
1:D:110:ARG:HA	1:D:117:TYR:HA	1.98	0.45
1:D:1243:PRO:HB2	1:D:1600:LEU:HD13	1.98	0.45
1:A:3771:HIS:O	1:A:3775:ALA:N	2.49	0.45
1:B:4874:MET:C	1:B:4876:CYS:N	2.70	0.45
1:C:1839:VAL:HG13	1:C:1841:VAL:HG23	1.98	0.45
1:C:2207:VAL:HG21	1:C:2235:PHE:HE2	1.82	0.45
1:B:686:TRP:CE3	1:B:777:PHE:HB3	2.51	0.45
1:B:3518:UNK:O	1:B:3520:UNK:N	2.49	0.45
1:D:664:PHE:CZ	1:D:779:PRO:HB3	2.52	0.45
1:D:2748:PRO:HD2	1:D:2751:LEU:HD12	1.99	0.45
1:C:649:PHE:HB3	1:C:776:LEU:HD13	1.97	0.45
1:C:867:LEU:HD21	1:C:939:VAL:HG21	1.99	0.45
1:C:3829:PHE:HD1	1:C:3915:ILE:HD11	1.81	0.45
1:C:3969:ILE:HD11	1:C:3980:LEU:HD12	1.99	0.45
1:C:4081:VAL:HG21	1:C:4088:ILE:HG22	1.97	0.45
1:C:4661:TYR:OH	1:C:4786:ASP:OD2	2.30	0.45
1:A:110:ARG:HA	1:A:117:TYR:HA	1.99	0.45
1:A:289:ARG:HG2	1:A:303:ASP:HA	1.98	0.45
1:A:1384:UNK:N	1:A:1397:UNK:O	2.49	0.45
1:B:275:ARG:NH1	1:B:278:GLN:HB2	2.32	0.45
1:D:2262:GLY:HA3	1:D:2301:TYR:CZ	2.52	0.45
1:C:1150:GLY:O	1:C:1163:THR:OG1	2.28	0.45

Continued on next page...

Continued from previous page...

Atom-1	Atom-2	Interatomic distance (Å)	Clash overlap (Å)
1:C:2101:MET:O	1:C:2104:ARG:HG2	2.17	0.45
1:C:4998:LYS:HD3	1:C:5003:HIS:HD2	1.82	0.45
1:A:355:LEU:HB3	1:A:378:LEU:HB3	1.98	0.45
1:A:541:SER:HA	1:A:574:VAL:HG22	1.99	0.45
1:A:2358:ILE:HA	1:A:2364:PHE:HZ	1.82	0.45
1:B:635:THR:HB	1:B:1639:LEU:HD23	1.99	0.45
1:B:1948:ASP:OD1	1:B:2126:ARG:NH2	2.44	0.45
1:B:4942:GLU:OE1	1:C:4944:ARG:NE	2.50	0.45
1:D:1653:LEU:HD21	1:D:1660:GLN:HA	1.99	0.45
1:D:4218:ILE:HD11	1:D:4985:LEU:HD21	1.98	0.45
1:C:1847:THR:O	1:C:1851:MET:HG2	2.17	0.45
1:C:3779:VAL:O	1:C:3783:ILE:HG12	2.16	0.45
1:C:4874:MET:CE	1:C:4877:ASP:OD1	2.65	0.45
1:A:2042:CYS:SG	1:A:2043:GLY:N	2.85	0.45
1:B:1689:VAL:HG13	1:B:1690:ASP:N	2.32	0.45
1:B:1866:ILE:HG22	1:B:1866:ILE:O	2.17	0.45
1:B:3927:GLN:HB2	1:B:3992:PHE:CE2	2.51	0.45
1:B:4920:PHE:O	1:B:4920:PHE:CD1	2.70	0.45
1:D:275:ARG:NH1	1:D:278:GLN:HB2	2.31	0.45
1:D:1365:UNK:HA	1:D:1403:UNK:HA	1.99	0.45
1:D:4696:ASP:O	1:D:4699:GLY:N	2.46	0.45
1:D:4944:ARG:NE	1:C:4942:GLU:OE1	2.50	0.45
1:D:5003:HIS:HD1	1:D:5007:GLU:CD	2.19	0.45
1:C:1217:CYS:O	1:C:1221:GLU:HB2	2.16	0.45
1:C:3874:VAL:HG12	1:C:3875:MET:HG2	1.98	0.45
1:A:2742:THR:HG23	1:A:2814:LYS:HD2	1.99	0.45
1:A:2751:LEU:O	1:A:2755:ILE:HG12	2.16	0.45
1:A:4581:LYS:HD2	1:A:4632:LEU:HD22	1.98	0.45
1:B:3941:ASP:OD1	1:B:3941:ASP:N	2.48	0.45
1:D:224:HIS:NE2	1:D:386:ASP:O	2.49	0.45
1:D:1110:ARG:HD3	1:D:1111:PRO:O	2.17	0.45
1:D:2267:MET:SD	1:D:2268:GLN:N	2.90	0.45
1:C:275:ARG:NH1	1:C:278:GLN:HB2	2.32	0.45
1:C:2212:VAL:HG12	1:C:2256:TYR:CZ	2.52	0.45
1:C:2802:LYS:HA	1:C:2802:LYS:HD3	1.80	0.45
1:C:4013:LEU:O	1:C:4017:LEU:HD23	2.16	0.45
1:C:4892:ARG:HG2	1:C:4892:ARG:NH1	2.32	0.45
1:A:2098:VAL:HG11	1:A:2127:GLN:HG3	1.99	0.45
1:B:4090:LYS:HE3	1:B:4090:LYS:HB2	1.81	0.45
1:D:886:ARG:O	1:D:891:TRP:N	2.43	0.45
1:D:2348:GLU:OE1	1:D:3849:ARG:NH2	2.50	0.45

Continued on next page...

Continued from previous page...

Atom-1	Atom-2	Interatomic distance (Å)	Clash overlap (Å)
1:D:4058:ILE:HG23	1:D:4062:PHE:HE2	1.82	0.45
1:C:533:ASN:ND2	1:C:536:ASN:OD1	2.49	0.45
1:C:3713:LYS:HD2	1:C:3716:LEU:HD23	1.98	0.45
1:A:867:LEU:HD11	1:A:933:LEU:HD22	2.00	0.44
1:A:2131:LEU:HD13	1:A:3662:ILE:HG21	1.99	0.44
1:B:3845:ASN:O	1:B:3849:ARG:HG2	2.17	0.44
1:D:344:SER:HB2	1:D:389:PHE:HA	1.98	0.44
1:D:888:GLU:C	1:D:890:GLY:N	2.71	0.44
1:D:1103:GLY:HA3	1:D:1123:VAL:HA	1.98	0.44
1:D:1689:VAL:HG13	1:D:1690:ASP:N	2.32	0.44
1:C:1384:UNK:O	1:C:1397:UNK:N	2.50	0.44
1:A:483:MET:HE2	1:A:486:LEU:HD21	1.98	0.44
1:A:2745:VAL:HB	1:A:2814:LYS:HD3	1.99	0.44
1:A:2807:TRP:N	1:A:2808:PRO:HD3	2.33	0.44
1:A:4202:ARG:HD2	1:A:4202:ARG:HA	1.76	0.44
1:A:4729:GLY:O	1:A:4734:ARG:NE	2.46	0.44
1:B:591:ASP:O	1:B:1594:ARG:NH1	2.45	0.44
1:B:742:ASP:HB3	1:B:759:ILE:HD11	1.99	0.44
1:B:1839:VAL:CG2	1:B:1840:PRO:HD2	2.47	0.44
1:B:4921:PHE:O	1:B:4921:PHE:CG	2.70	0.44
1:C:20:VAL:HG11	1:C:202:MET:HB3	1.99	0.44
1:C:264:PRO:HA	1:C:280:LEU:HG	1.99	0.44
1:C:835:ARG:NH2	1:C:1210:SER:O	2.50	0.44
1:C:3751:VAL:HG23	1:C:3756:LYS:HE2	1.99	0.44
1:C:4679:ARG:HE	1:C:5017:ARG:CZ	2.30	0.44
1:A:1704:PRO:HD2	1:A:1707:LEU:HD12	1.99	0.44
1:A:4691:GLN:NE2	1:A:4694:ASP:OD2	2.50	0.44
1:D:932:LEU:HD13	1:D:1046:LEU:HD22	1.98	0.44
1:D:3883:ASP:OD1	1:D:3884:LEU:N	2.50	0.44
1:C:614:VAL:HG22	1:C:616:SER:H	1.82	0.44
1:C:891:TRP:HE3	1:C:904:HIS:HB2	1.83	0.44
1:C:4034:ASN:ND2	1:C:4040:ILE:HB	2.33	0.44
1:C:4218:ILE:HD11	1:C:4985:LEU:HD21	2.00	0.44
1:A:1129:GLY:O	1:A:1139:PHE:N	2.40	0.44
1:A:1221:GLU:HB3	1:A:1223:PHE:CD1	2.52	0.44
1:A:3652:MET:HA	1:A:3655:GLU:HG2	2.00	0.44
1:A:4192:ARG:HG2	1:A:4194:TYR:CE1	2.53	0.44
1:A:4794:TRP:HA	1:A:4797:VAL:HG22	1.99	0.44
1:B:1691:GLN:HG2	1:B:1692:ALA:N	2.32	0.44
1:B:4920:PHE:O	1:B:4920:PHE:CG	2.70	0.44
1:D:134:ASP:OD1	1:D:134:ASP:N	2.50	0.44

Continued on next page...

Continued from previous page...

Atom-1	Atom-2	Interatomic distance (Å)	Clash overlap (Å)
1:C:117:TYR:HD2	1:C:141:ALA:HA	1.81	0.44
1:C:786:GLY:HA2	1:C:1631:GLN:HA	1.99	0.44
1:C:908:VAL:CG1	1:C:909:ASN:H	2.30	0.44
1:B:348:VAL:HG22	1:B:357:LEU:HD13	1.98	0.44
1:B:4002:LYS:HA	1:B:4002:LYS:HD3	1.80	0.44
1:B:4031:LEU:HD23	1:B:4031:LEU:H	1.83	0.44
1:B:4041:ALA:O	1:B:4045:VAL:HG23	2.18	0.44
1:B:4221:VAL:HG23	1:B:4233:LEU:HD11	1.98	0.44
1:B:4707:ASN:ND2	1:B:4740:LEU:O	2.49	0.44
1:B:4875:LYS:C	1:B:4877:ASP:N	2.65	0.44
1:D:2807:TRP:N	1:D:2808:PRO:HD3	2.32	0.44
1:A:194:SER:O	1:B:2359:ARG:NH1	2.38	0.44
1:A:1948:ASP:OD1	1:A:2126:ARG:NH2	2.42	0.44
1:A:4984:ASN:C	2:A:5101:ACP:HN61	2.21	0.44
1:D:597:HIS:HB3	1:D:1665:HIS:CE1	2.53	0.44
1:D:663:TYR:HH	1:D:758:ARG:HH21	1.66	0.44
1:D:1154:ASP:HB3	1:D:1157:GLU:HB2	1.99	0.44
1:D:2042:CYS:SG	1:D:2043:GLY:N	2.86	0.44
1:D:2310:CYS:N	1:D:2324:ASN:OD1	2.51	0.44
1:D:3986:TRP:HD1	1:D:4047:MET:HG3	1.82	0.44
1:C:913:LEU:O	1:C:918:ARG:NH2	2.51	0.44
1:C:1948:ASP:OD1	1:C:2126:ARG:NH2	2.44	0.44
1:A:360:ALA:HB2	1:A:377:ILE:HG12	2.00	0.44
1:A:578:ILE:HD11	1:A:617:ASN:HB3	2.00	0.44
1:A:4661:TYR:OH	1:A:4786:ASP:OD2	2.36	0.44
1:A:4938:ASP:O	1:A:4942:GLU:HG2	2.17	0.44
1:B:292:ALA:HB2	1:B:312:THR:HG22	1.99	0.44
1:B:4938:ASP:O	1:B:4942:GLU:HG2	2.18	0.44
1:D:488:LEU:HD22	1:D:546:TRP:CH2	2.53	0.44
1:D:498:THR:HG23	1:D:499:THR:H	1.83	0.44
1:D:758:ARG:NH1	1:D:760:ASN:O	2.51	0.44
1:D:1707:LEU:O	1:D:1709:ALA:N	2.51	0.44
1:D:3889:GLN:HG3	1:D:3967:GLU:HG2	2.00	0.44
1:D:4661:TYR:OH	1:D:4786:ASP:OD2	2.36	0.44
1:A:794:GLY:H	1:A:798:GLY:HA3	1.82	0.44
1:A:869:ARG:NH1	1:A:870:ILE:HB	2.32	0.44
1:A:2203:MET:SD	1:A:2203:MET:N	2.88	0.44
1:A:3674:ILE:HG23	1:A:3698:LEU:HD21	2.00	0.44
1:A:4730:ASP:OD1	1:A:4730:ASP:N	2.47	0.44
1:D:45:ARG:HG2	1:D:443:LEU:HD21	1.98	0.44
1:D:118:LEU:HD12	1:D:137:LEU:HB3	1.99	0.44

Continued on next page...

Continued from previous page...

Atom-1	Atom-2	Interatomic distance (Å)	Clash overlap (Å)
1:D:360:ALA:HB2	1:D:377:ILE:HG12	2.00	0.44
1:D:4198:SER:OG	1:D:4199:GLU:N	2.51	0.44
1:C:1689:VAL:HG13	1:C:1690:ASP:H	1.81	0.44
1:C:2116:LEU:HG	1:C:2120:MET:HE1	1.99	0.44
1:C:3710:LEU:HD21	1:C:3781:GLN:NE2	2.33	0.44
1:C:4673:ARG:HH22	1:C:4698:LYS:HE3	1.83	0.44
1:A:786:GLY:HA2	1:A:1631:GLN:HA	1.99	0.44
1:A:4236:SER:HA	1:A:4675:LYS:NZ	2.32	0.44
1:B:1716:ILE:HD11	1:B:1844:LEU:HG	1.99	0.44
1:D:1095:VAL:HG23	1:D:1200:GLY:HA2	2.00	0.44
1:D:2116:LEU:HG	1:D:2120:MET:HE1	2.00	0.44
1:C:426:ARG:HA	1:C:431:PRO:HB3	1.99	0.44
1:C:2107:GLN:HE22	1:C:3681:GLY:HA2	1.82	0.44
1:C:4780:PHE:HA	1:C:4783:ILE:HG12	1.99	0.44
1:A:42:PHE:HD2	1:A:447:ASP:HB3	1.83	0.43
1:A:745:SER:OG	1:A:758:ARG:O	2.26	0.43
1:A:4017:LEU:HD13	1:A:4135:PRO:HB2	2.00	0.43
1:B:42:PHE:HD2	1:B:447:ASP:HB3	1.83	0.43
1:B:1148:VAL:O	1:B:1165:ASN:N	2.45	0.43
1:D:4901:ILE:HG21	1:D:4913:ARG:NH1	2.33	0.43
1:C:4006:ASP:OD2	1:C:4009:GLN:NE2	2.51	0.43
1:A:1148:VAL:O	1:A:1165:ASN:N	2.39	0.43
1:A:2116:LEU:HG	1:A:2120:MET:HE1	2.01	0.43
1:A:2813:LEU:HD21	1:A:2930:LEU:HD11	2.00	0.43
1:A:3665:GLU:HG2	1:A:3667:HIS:HD2	1.83	0.43
1:B:710:ASP:OD1	1:B:710:ASP:N	2.50	0.43
1:B:2305:CYS:O	1:B:2324:ASN:ND2	2.52	0.43
1:B:4666:VAL:CG1	1:B:4667:PRO:CD	2.92	0.43
1:D:950:LEU:HD13	1:D:970:LEU:HD13	1.99	0.43
1:D:4666:VAL:N	1:D:4667:PRO:CD	2.81	0.43
1:C:3771:HIS:HB3	1:C:3773:ARG:NH1	2.33	0.43
1:C:4101:LYS:O	1:C:4102:GLN:HG2	2.18	0.43
1:C:4198:SER:OG	1:C:4199:GLU:N	2.51	0.43
1:A:52:THR:HA	1:A:60:PRO:HG3	2.00	0.43
1:A:1110:ARG:HD3	1:A:1111:PRO:O	2.18	0.43
1:A:3765:TYR:OH	1:A:4751:THR:HG22	2.17	0.43
1:A:4731:ILE:HD12	1:B:4101:LYS:HE3	2.01	0.43
1:B:4696:ASP:O	1:B:4699:GLY:N	2.46	0.43
1:D:1091:GLU:OE2	1:D:1212:ARG:HB2	2.18	0.43
1:D:4034:ASN:ND2	1:D:4040:ILE:HB	2.34	0.43
1:D:4060:LYS:NZ	1:D:4064:MET:HB3	2.34	0.43

Continued on next page...

Continued from previous page...

Atom-1	Atom-2	Interatomic distance (Å)	Clash overlap (Å)
1:D:4198:SER:HB3	1:D:4201:ASN:HB2	2.00	0.43
1:D:4577:LEU:HD23	1:D:4580:TYR:HE2	1.83	0.43
1:C:384:MET:SD	1:C:384:MET:N	2.91	0.43
1:C:1111:PRO:HD3	1:C:1605:TRP:HE1	1.83	0.43
1:C:4870:ASP:OD2	1:C:4872:PRO:HG2	2.18	0.43
1:A:734:GLY:O	1:A:736:HIS:ND1	2.41	0.43
1:A:1115:LEU:HD13	1:A:1193:SER:HB3	2.00	0.43
1:A:2188:ASN:O	1:A:2189:LYS:HG2	2.19	0.43
1:A:4892:ARG:NH1	1:D:4896:GLY:HA3	2.34	0.43
1:B:232:THR:HB	1:B:252:VAL:HG11	2.00	0.43
1:B:1089:TYR:HB3	1:B:1223:PHE:HB3	2.01	0.43
1:D:786:GLY:HA2	1:D:1631:GLN:HA	2.00	0.43
1:C:418:LEU:HB3	1:C:493:ARG:NH2	2.33	0.43
1:C:3959:LYS:HB2	1:C:4019:LEU:HD12	2.01	0.43
1:C:4680:LYS:HA	1:C:4680:LYS:HD2	1.80	0.43
1:A:20:VAL:HG11	1:A:202:MET:HB3	2.00	0.43
1:A:264:PRO:HA	1:A:280:LEU:HG	2.00	0.43
1:A:1794:ALA:HA	1:A:1795:PRO:HD3	1.92	0.43
1:A:2012:PHE:HB3	1:A:2021:CYS:HA	2.01	0.43
1:B:134:ASP:OD1	1:B:134:ASP:N	2.50	0.43
1:B:3937:TYR:OH	1:B:3944:GLU:OE2	2.36	0.43
1:D:247:TYR:HE2	1:D:359:TYR:HB3	1.84	0.43
1:D:319:SER:OG	1:D:320:LYS:N	2.51	0.43
1:D:1217:CYS:O	1:D:1221:GLU:HB2	2.19	0.43
1:C:4716:TRP:CH2	1:C:4996:ILE:HG13	2.54	0.43
1:A:3897:ASN:ND2	1:A:3897:ASN:C	2.66	0.43
1:A:4705:VAL:O	1:A:4708:THR:HG22	2.18	0.43
1:B:350:HIS:O	1:B:354:GLY:N	2.50	0.43
1:B:2770:LYS:HA	1:B:2770:LYS:HD3	1.73	0.43
1:B:4985:LEU:CB	2:B:5101:ACP:HN61	2.31	0.43
1:D:52:THR:HA	1:D:60:PRO:HG3	2.00	0.43
1:D:207:SER:OG	1:D:208:CYS:N	2.49	0.43
1:D:769:GLU:O	1:D:1383:UNK:N	2.52	0.43
1:D:2469:ILE:HA	1:D:2472:LEU:HG	2.00	0.43
1:D:3145:UNK:HA	1:D:3191:UNK:HA	2.00	0.43
1:C:4664:LEU:HG	1:C:4665:LYS:HG3	2.01	0.43
1:A:3815:LYS:HE2	1:A:3815:LYS:HB2	1.81	0.43
1:B:2792:ARG:NH2	1:B:2801:ASP:OD2	2.52	0.43
1:D:419:ASP:HB2	1:D:493:ARG:HH12	1.84	0.43
1:D:1808:ARG:NH1	1:D:1858:ASP:OD2	2.52	0.43
1:C:911:HIS:O	1:C:918:ARG:NH2	2.48	0.43

Continued on next page...

Continued from previous page...

Atom-1	Atom-2	Interatomic distance (Å)	Clash overlap (Å)
1:C:4892:ARG:HG2	1:C:4892:ARG:O	2.18	0.43
1:A:500:ALA:HA	1:A:504:ALA:HB3	2.00	0.43
1:B:4090:LYS:NZ	1:B:4120:ASN:OD1	2.42	0.43
1:D:426:ARG:HA	1:D:431:PRO:HB3	1.99	0.43
1:D:565:TYR:HB2	1:D:602:VAL:HG22	2.01	0.43
1:D:762:CYS:SG	1:D:764:VAL:HG23	2.59	0.43
1:A:973:SER:HA	1:A:1044:ARG:HH21	1.83	0.43
1:B:879:HIS:HE1	1:B:906:CYS:O	2.01	0.43
1:D:2142:TYR:HE1	1:D:2196:ASN:HB2	1.84	0.43
1:D:2297:LYS:HD2	1:D:2297:LYS:HA	1.86	0.43
1:D:3561:UNK:O	1:D:3563:UNK:N	2.52	0.43
1:D:4183:ILE:HG12	1:D:4193:ILE:HD11	2.00	0.43
1:C:523:TYR:O	1:C:526:LEU:HG	2.19	0.43
1:C:4010:ILE:HG22	1:C:4132:PHE:HZ	1.82	0.43
1:A:4848:VAL:HG11	1:A:4887:MET:HE1	2.00	0.43
1:B:69:LEU:HD21	1:B:107:ILE:HD12	2.00	0.43
1:B:4046:ASP:OD1	1:B:4159:ARG:NH2	2.43	0.43
1:B:4058:ILE:HG23	1:B:4062:PHE:HE2	1.84	0.43
1:B:4138:ASP:O	1:B:4142:ASN:ND2	2.46	0.43
1:B:4863:TYR:CD1	1:B:4901:ILE:HG12	2.54	0.43
1:D:523:TYR:O	1:D:526:LEU:HG	2.19	0.43
1:D:1718:ILE:HG13	1:D:1719:HIS:CD2	2.54	0.43
1:D:3762:ARG:O	1:D:3766:GLN:HG2	2.18	0.43
1:D:4051:SER:O	1:D:4051:SER:OG	2.34	0.43
1:D:4859:PHE:HE2	1:D:4913:ARG:HB2	1.84	0.43
1:D:5037:SER:O	1:D:5037:SER:OG	2.33	0.43
1:C:1072:VAL:HG12	1:C:1195:GLY:HA2	2.00	0.43
1:A:531:ARG:NH2	1:A:562:GLU:OE2	2.48	0.42
1:A:3845:ASN:O	1:A:3849:ARG:HG2	2.19	0.42
1:A:4151:SER:HA	1:A:4160:LEU:HD21	2.01	0.42
1:A:4762:PRO:O	1:A:4766:THR:OG1	2.37	0.42
1:B:1178:ALA:HB1	1:B:1180:ARG:HE	1.84	0.42
1:B:2267:MET:SD	1:B:2268:GLN:N	2.92	0.42
1:B:2358:ILE:HG13	1:B:2359:ARG:HE	1.83	0.42
1:D:561:LEU:HD21	1:D:596:ASN:ND2	2.34	0.42
1:D:1164:LEU:HB3	1:D:1169:LEU:HD21	2.01	0.42
1:D:3675:ASP:N	1:D:3675:ASP:OD1	2.52	0.42
1:D:4572:ALA:O	1:D:4576:ILE:HG12	2.19	0.42
1:C:222:LEU:HG	1:C:390:LEU:HD11	1.99	0.42
1:C:3770:LEU:HD12	1:C:3770:LEU:C	2.31	0.42
1:A:221:ARG:NE	1:A:253:CYS:O	2.52	0.42

Continued on next page...

Continued from previous page...

Atom-1	Atom-2	Interatomic distance (Å)	Clash overlap (Å)
1:A:1749:PRO:HB3	1:A:1760:HIS:HA	2.01	0.42
1:A:1839:VAL:O	1:A:1841:VAL:N	2.52	0.42
1:A:2101:MET:O	1:A:2104:ARG:HG2	2.19	0.42
1:A:4105:GLY:HA2	1:A:4108:ILE:HD12	2.01	0.42
1:A:4925:ILE:O	1:A:4929:LEU:HB2	2.18	0.42
1:B:498:THR:HG23	1:B:499:THR:N	2.35	0.42
1:B:578:ILE:HD11	1:B:617:ASN:HB3	2.01	0.42
1:B:638:ILE:HG21	1:B:703:GLY:HA3	2.01	0.42
1:B:786:GLY:HA2	1:B:1631:GLN:HA	2.01	0.42
1:B:4716:TRP:CH2	1:B:4996:ILE:HG13	2.54	0.42
1:B:4875:LYS:H	1:B:4875:LYS:HG2	1.74	0.42
1:D:686:TRP:CE3	1:D:777:PHE:HB3	2.54	0.42
1:D:4022:ASP:HA	1:D:4025:VAL:HG12	2.01	0.42
1:D:4182:GLU:OE2	1:D:4983:HIS:ND1	2.33	0.42
1:C:710:ASP:OD1	1:C:710:ASP:N	2.52	0.42
1:C:2785:LEU:O	1:C:2785:LEU:HD23	2.19	0.42
1:C:3845:ASN:O	1:C:3849:ARG:HG2	2.19	0.42
1:A:484:LEU:HD23	1:A:540:PHE:HE1	1.83	0.42
1:A:1833:SER:HB3	1:A:1836:PHE:HD2	1.85	0.42
1:B:247:TYR:HE2	1:B:359:TYR:HB3	1.84	0.42
1:B:1100:MET:HB2	1:B:1143:TRP:CH2	2.54	0.42
1:B:2116:LEU:HG	1:B:2120:MET:HE1	2.00	0.42
1:C:3878:ASP:OD1	1:C:3879:GLU:N	2.52	0.42
1:A:1703:LEU:HD11	1:A:1709:ALA:H	1.84	0.42
1:A:2211:MET:HA	1:A:2214:VAL:HG12	2.02	0.42
1:A:3887:PHE:CZ	1:A:3891:LEU:HD21	2.54	0.42
1:A:4865:LYS:C	1:A:4871:GLU:OE2	2.57	0.42
1:B:2149:VAL:O	1:B:2153:MET:HG2	2.19	0.42
1:B:2242:ILE:HG13	1:B:2242:ILE:O	2.20	0.42
1:B:3829:PHE:HD1	1:B:3915:ILE:HD11	1.84	0.42
1:D:34:LYS:N	1:D:53:SER:OG	2.48	0.42
1:D:1100:MET:H	1:D:1143:TRP:HH2	1.65	0.42
1:D:2474:LEU:HD23	1:D:2474:LEU:H	1.84	0.42
1:C:360:ALA:HB2	1:C:377:ILE:HG12	2.02	0.42
1:C:2310:CYS:N	1:C:2324:ASN:OD1	2.53	0.42
1:C:4855:ALA:HA	1:C:4859:PHE:HB2	2.01	0.42
1:A:719:LEU:O	1:A:720:HIS:ND1	2.53	0.42
1:A:2025:GLU:HA	1:A:2028:ARG:NE	2.35	0.42
1:A:3963:ASN:O	1:A:3966:THR:OG1	2.29	0.42
1:B:734:GLY:O	1:B:736:HIS:ND1	2.43	0.42
1:B:3878:ASP:OD1	1:B:3879:GLU:N	2.52	0.42

Continued on next page...

Continued from previous page...

Atom-1	Atom-2	Interatomic distance (Å)	Clash overlap (Å)
1:B:3887:PHE:CZ	1:B:3891:LEU:HD21	2.55	0.42
1:B:4141:PHE:HB2	1:B:4174:PHE:HE2	1.85	0.42
1:B:4874:MET:CE	1:B:4876:CYS:HB2	2.50	0.42
1:D:4034:ASN:HD22	1:D:4040:ILE:HB	1.84	0.42
1:C:664:PHE:CZ	1:C:779:PRO:HB3	2.53	0.42
1:C:1704:PRO:HD2	1:C:1707:LEU:HD12	2.02	0.42
1:C:2474:LEU:HD23	1:C:2474:LEU:H	1.84	0.42
1:A:342:GLY:N	1:A:390:LEU:O	2.39	0.42
1:A:1973:GLN:HG2	1:A:3641:LEU:HD11	2.01	0.42
1:A:4958:CYS:HA	2:A:5101:ACP:H2	2.00	0.42
1:B:384:MET:SD	1:B:384:MET:N	2.91	0.42
1:B:755:ILE:HB	1:B:768:PHE:HD2	1.84	0.42
1:D:3887:PHE:CZ	1:D:3891:LEU:HD21	2.54	0.42
1:D:4705:VAL:O	1:D:4708:THR:HG22	2.18	0.42
1:C:1698:LEU:HD22	1:C:1712:TYR:CZ	2.54	0.42
1:C:4065:PHE:CZ	1:C:4132:PHE:HB2	2.54	0.42
1:A:14:LEU:HB2	1:A:101:LEU:HD12	2.02	0.42
1:A:565:TYR:HB2	1:A:602:VAL:HG22	2.02	0.42
1:B:1175:SER:OG	1:B:1176:GLU:N	2.52	0.42
1:D:418:LEU:HD22	1:D:493:ARG:HD3	2.02	0.42
1:D:521:LEU:HD23	1:D:524:GLU:OE2	2.20	0.42
1:D:886:ARG:HB3	1:D:891:TRP:HB2	2.02	0.42
1:D:1794:ALA:HA	1:D:1795:PRO:HD3	1.92	0.42
1:D:4003:LEU:HD22	1:D:4013:LEU:HG	2.02	0.42
1:D:4138:ASP:O	1:D:4142:ASN:ND2	2.50	0.42
1:C:3403:UNK:O	1:C:3407:UNK:N	2.53	0.42
1:A:1727:ARG:HH12	1:A:1773:PRO:HD2	1.85	0.42
1:A:3779:VAL:HG23	1:A:3797:THR:HG22	2.01	0.42
1:A:4034:ASN:ND2	1:A:4040:ILE:HB	2.35	0.42
1:B:1101:ARG:HB3	1:B:1123:VAL:HG21	2.02	0.42
1:B:1118:ASP:N	1:B:1118:ASP:OD1	2.52	0.42
1:B:2025:GLU:HA	1:B:2028:ARG:NE	2.34	0.42
1:D:1866:ILE:HG22	1:D:1866:ILE:O	2.20	0.42
1:C:708:GLY:HA3	1:C:722:TRP:HB3	2.01	0.42
1:C:1047:LEU:HD23	1:C:1047:LEU:HA	1.87	0.42
1:C:2025:GLU:HA	1:C:2028:ARG:NE	2.35	0.42
1:C:3702:VAL:HG11	1:C:3775:ALA:HA	2.02	0.42
1:C:3760:LYS:CD	1:C:3760:LYS:C	2.88	0.42
1:A:4984:ASN:HA	2:A:5101:ACP:N6	2.35	0.42
1:B:111:HIS:HD2	1:B:114:SER:H	1.64	0.42
1:B:1867:GLU:N	1:B:1868:PRO:HD2	2.34	0.42

Continued on next page...

Continued from previous page...

Atom-1	Atom-2	Interatomic distance (Å)	Clash overlap (Å)
1:D:1095:VAL:HB	1:D:1199:VAL:HG13	2.01	0.42
1:D:4238:CYS:O	1:D:4242:ILE:HG12	2.20	0.42
1:C:243:ARG:HG2	1:C:301:VAL:HB	2.02	0.42
1:C:961:MET:HG2	1:C:962:SER:N	2.35	0.42
1:C:1698:LEU:HD22	1:C:1712:TYR:CE1	2.55	0.42
1:C:1724:CYS:SG	1:C:1728:ARG:NH1	2.93	0.42
1:C:1849:LEU:HG	1:C:1945:TYR:CE2	2.54	0.42
1:C:2267:MET:SD	1:C:2268:GLN:N	2.92	0.42
1:C:4238:CYS:O	1:C:4242:ILE:HG12	2.19	0.42
1:C:4705:VAL:O	1:C:4708:THR:HG22	2.20	0.42
1:C:4870:ASP:OD2	1:C:4872:PRO:HG3	2.15	0.42
1:A:2251:PHE:HZ	1:A:2290:LEU:HA	1.84	0.42
1:B:500:ALA:HA	1:B:504:ALA:HB3	2.02	0.42
1:B:4954:MET:SD	2:B:5101:ACP:H1'	2.60	0.42
1:D:1723:ALA:HB1	1:D:1851:MET:SD	2.60	0.42
1:D:2806:ARG:HA	1:D:2806:ARG:HD2	1.82	0.42
1:D:3877:ASP:HB3	1:D:3881:THR:HG23	2.02	0.42
1:D:4837:LEU:HA	1:D:4840:THR:HG22	2.02	0.42
1:C:1130:GLN:HA	1:C:1138:PRO:HA	2.00	0.42
1:C:4794:TRP:HA	1:C:4797:VAL:HG22	2.01	0.42
1:A:2773:ASN:HB3	1:A:2775:TRP:CD1	2.55	0.41
1:A:4134:GLU:HB2	1:A:4135:PRO:HD3	2.02	0.41
1:A:4795:TYR:HE1	1:A:4812:HIS:HA	1.84	0.41
1:D:2142:TYR:CD2	1:D:2197:LEU:HD12	2.55	0.41
1:A:2474:LEU:HD23	1:A:2474:LEU:H	1.84	0.41
2:A:5101:ACP:H3B1	2:A:5101:ACP:O1A	2.20	0.41
1:B:1749:PRO:HB3	1:B:1760:HIS:HA	2.02	0.41
1:B:4874:MET:SD	1:B:4874:MET:O	2.78	0.41
1:D:426:ARG:HG2	1:D:431:PRO:HB3	2.00	0.41
1:D:1867:GLU:N	1:D:1868:PRO:HD2	2.35	0.41
1:C:738:LEU:HD23	1:C:738:LEU:HA	1.92	0.41
1:A:488:LEU:HD22	1:A:546:TRP:CH2	2.55	0.41
1:A:2739:PRO:HB3	1:A:2888:ARG:HG2	2.02	0.41
1:B:1927:LEU:HD23	1:B:2101:MET:HG3	2.02	0.41
1:B:2474:LEU:H	1:B:2474:LEU:HD23	1.84	0.41
1:B:4863:TYR:HD1	1:B:4901:ILE:CG1	2.32	0.41
1:D:422:SER:OG	1:D:423:GLY:N	2.53	0.41
1:D:886:ARG:O	1:D:891:TRP:HB2	2.20	0.41
1:D:4702:ASP:OD1	1:D:4702:ASP:N	2.52	0.41
1:C:4666:VAL:N	1:C:4667:PRO:HD2	2.35	0.41
1:A:672:VAL:HB	1:A:680:THR:HG21	2.03	0.41

Continued on next page...

Continued from previous page...

Atom-1	Atom-2	Interatomic distance (Å)	Clash overlap (Å)
1:A:708:GLY:HA3	1:A:722:TRP:HB3	2.02	0.41
1:A:3702:VAL:HG21	1:A:3775:ALA:HB1	2.02	0.41
1:B:340:LYS:O	1:B:344:SER:OG	2.32	0.41
1:B:1794:ALA:HA	1:B:1795:PRO:HD3	1.92	0.41
1:B:4920:PHE:CZ	1:B:4924:VAL:HG21	2.56	0.41
1:D:475:GLN:HG2	1:D:529:LEU:HD12	2.02	0.41
1:D:1747:LEU:HB3	1:D:1760:HIS:HB3	2.02	0.41
1:C:110:ARG:HA	1:C:117:TYR:HA	2.03	0.41
1:A:330:ASP:OD1	1:A:330:ASP:N	2.43	0.41
1:A:3809:ASN:O	1:A:3812:VAL:HG22	2.20	0.41
1:A:3986:TRP:HD1	1:A:4047:MET:HG3	1.86	0.41
1:B:64:ILE:HG23	1:B:402:ARG:HH21	1.86	0.41
1:B:1148:VAL:HB	1:B:1165:ASN:HA	2.03	0.41
1:B:1237:TRP:CZ3	1:B:1652:GLU:HG2	2.56	0.41
1:D:986:ASP:HA	1:D:1039:LEU:HD12	2.03	0.41
1:D:4563:ARG:HD2	1:D:4563:ARG:HA	1.87	0.41
1:C:571:SER:OG	1:C:573:GLU:OE1	2.27	0.41
1:C:684:VAL:HG12	1:C:781:VAL:HG23	2.02	0.41
1:C:1747:LEU:HB3	1:C:1760:HIS:HB3	2.01	0.41
1:A:556:ALA:O	1:A:560:ILE:HG12	2.20	0.41
1:A:567:VAL:HG13	1:A:568:LEU:HD12	2.01	0.41
1:A:1687:SER:HB3	1:A:1782:PHE:HD1	1.85	0.41
1:A:1810:LYS:HB2	1:A:1810:LYS:HE3	1.79	0.41
1:B:2101:MET:O	1:B:2104:ARG:HG2	2.21	0.41
1:B:4921:PHE:CD1	1:B:4921:PHE:O	2.73	0.41
1:D:734:GLY:O	1:D:736:HIS:ND1	2.41	0.41
1:D:3401:UNK:O	1:D:3406:UNK:N	2.54	0.41
1:D:4919:THR:O	1:D:4923:PHE:HB3	2.21	0.41
1:C:137:LEU:HD23	1:C:137:LEU:H	1.85	0.41
1:C:4852:THR:HG22	1:C:4853:VAL:N	2.36	0.41
1:A:1689:VAL:HG13	1:A:1690:ASP:N	2.35	0.41
1:A:1727:ARG:NH1	1:A:1772:ARG:HB3	2.36	0.41
1:A:1765:VAL:HG22	1:A:1766:GLY:H	1.86	0.41
1:A:1867:GLU:N	1:A:1868:PRO:HD2	2.35	0.41
1:A:2248:ARG:HA	1:A:2286:LEU:HD21	2.01	0.41
1:A:2310:CYS:N	1:A:2324:ASN:OD1	2.53	0.41
1:A:4152:GLU:OE1	1:A:4194:TYR:OH	2.39	0.41
1:A:5026:ASP:OD1	1:A:5027:CYS:N	2.53	0.41
1:B:1118:ASP:HA	1:B:1134:LEU:HD23	2.02	0.41
1:B:2770:LYS:HD2	1:B:2775:TRP:CE2	2.55	0.41
1:B:3731:LYS:HD2	1:B:3731:LYS:HA	1.89	0.41

Continued on next page...

Continued from previous page...

Atom-1	Atom-2	Interatomic distance (Å)	Clash overlap (Å)
1:C:110:ARG:HH21	1:C:115:ARG:HB3	1.86	0.41
1:C:617:ASN:OD1	1:C:618:GLN:N	2.54	0.41
1:C:663:TYR:CE2	1:C:665:GLU:HG3	2.55	0.41
1:C:1093:GLU:HA	1:C:1147:ASP:O	2.21	0.41
1:C:3804:ILE:HG22	1:C:3805:LEU:HD12	2.03	0.41
1:A:117:TYR:HD2	1:A:141:ALA:HA	1.86	0.41
1:A:533:ASN:ND2	1:A:536:ASN:OD1	2.53	0.41
1:A:805:PRO:HA	1:A:806:PRO:HD3	1.92	0.41
1:A:2802:LYS:HA	1:A:2802:LYS:HD3	1.85	0.41
1:A:3662:ILE:O	1:A:3662:ILE:HG22	2.21	0.41
1:A:4922:PHE:HD1	1:B:4892:ARG:NH1	2.19	0.41
1:B:143:GLY:HA3	1:B:147:TRP:HE1	1.86	0.41
1:D:3997:ALA:HA	1:D:4058:ILE:HD11	2.03	0.41
1:D:4238:CYS:SG	1:D:4989:MET:HG2	2.61	0.41
1:C:953:THR:OG1	1:C:969:PRO:O	2.30	0.41
1:C:960:MET:SD	1:C:961:MET:N	2.94	0.41
1:C:2188:ASN:O	1:C:2189:LYS:HG2	2.21	0.41
1:C:4016:LEU:O	1:C:4020:GLN:HG2	2.21	0.41
1:C:4072:VAL:HG12	1:C:4077:PHE:CD2	2.56	0.41
1:C:4875:LYS:H	1:C:4875:LYS:CD	2.33	0.41
1:A:172:VAL:HG22	1:A:179:TYR:HD1	1.85	0.41
1:A:340:LYS:O	1:A:344:SER:OG	2.36	0.41
1:A:491:ILE:O	1:A:495:ASN:HB2	2.21	0.41
1:A:2251:PHE:HB2	1:A:2286:LEU:HD23	2.02	0.41
1:A:2785:LEU:O	1:A:2785:LEU:HD23	2.20	0.41
1:A:3489:UNK:O	1:A:3494:UNK:N	2.54	0.41
1:A:3731:LYS:HD2	1:A:3731:LYS:HA	1.88	0.41
1:A:3927:GLN:HB2	1:A:3992:PHE:CE2	2.55	0.41
1:A:4238:CYS:O	1:A:4242:ILE:HG12	2.21	0.41
1:B:132:ALA:HA	1:B:194:SER:HB3	2.03	0.41
1:B:427:GLY:H	1:B:431:PRO:HB3	1.86	0.41
1:B:684:VAL:HG12	1:B:781:VAL:HG23	2.03	0.41
1:B:1656:ARG:O	1:B:1657:LEU:HG	2.20	0.41
1:B:1707:LEU:HB3	1:B:1708:ARG:H	1.63	0.41
1:B:2012:PHE:HB3	1:B:2021:CYS:HA	2.03	0.41
1:B:2273:LEU:HD23	1:B:2273:LEU:HA	1.91	0.41
1:B:2310:CYS:N	1:B:2324:ASN:OD1	2.54	0.41
1:B:4794:TRP:HA	1:B:4797:VAL:HG22	2.02	0.41
1:B:4874:MET:HE1	1:B:4876:CYS:HB2	2.03	0.41
1:D:22:LEU:HD23	1:D:22:LEU:H	1.86	0.41
1:D:4160:LEU:O	1:D:4164:LEU:HD23	2.21	0.41

Continued on next page...

Continued from previous page...

Atom-1	Atom-2	Interatomic distance (Å)	Clash overlap (Å)
1:C:232:THR:HB	1:C:252:VAL:HG11	2.02	0.41
1:C:791:PHE:HE2	1:C:823:LEU:HD11	1.86	0.41
1:C:1118:ASP:HA	1:C:1134:LEU:HD23	2.03	0.41
1:C:1727:ARG:HH12	1:C:1772:ARG:HB3	1.85	0.41
1:C:1867:GLU:N	1:C:1868:PRO:HD2	2.35	0.41
1:C:2012:PHE:HB3	1:C:2022:PRO:HD3	2.03	0.41
1:C:2447:LYS:HG3	1:C:2449:GLU:H	1.86	0.41
1:C:3986:TRP:O	1:C:3990:VAL:HG22	2.21	0.41
1:C:4581:LYS:HD2	1:C:4632:LEU:HD22	2.03	0.41
1:C:4828:SER:HA	1:C:4831:THR:HG22	2.02	0.41
1:A:484:LEU:O	1:A:488:LEU:HG	2.21	0.41
1:A:1237:TRP:CZ3	1:A:1652:GLU:HG2	2.56	0.41
1:A:2207:VAL:HG12	1:A:2211:MET:CE	2.51	0.41
1:A:3995:VAL:HG23	1:A:3996:PHE:CD1	2.56	0.41
1:B:1119:GLU:OE2	1:B:1133:HIS:NE2	2.52	0.41
1:B:1217:CYS:O	1:B:1221:GLU:HB2	2.20	0.41
1:B:3754:GLU:N	1:B:3754:GLU:CD	2.73	0.41
1:B:4792:LEU:O	1:B:4796:MET:HG2	2.20	0.41
1:D:710:ASP:OD1	1:D:710:ASP:N	2.53	0.41
1:D:835:ARG:HH11	1:D:1212:ARG:HH11	1.68	0.41
1:D:3675:ASP:H	1:D:3769:ARG:NH2	2.16	0.41
1:C:645:ARG:O	1:C:824:GLU:N	2.49	0.41
1:C:867:LEU:HD11	1:C:933:LEU:HD22	2.02	0.41
1:C:1699:GLU:OE2	1:C:1813:ARG:NH1	2.54	0.41
1:C:1794:ALA:HA	1:C:1795:PRO:HD3	1.91	0.41
1:A:719:LEU:O	1:A:720:HIS:CG	2.73	0.40
1:B:360:ALA:HB2	1:B:377:ILE:HG12	2.03	0.40
1:B:1765:VAL:HG22	1:B:1766:GLY:H	1.86	0.40
1:B:1849:LEU:HG	1:B:1945:TYR:CE2	2.57	0.40
1:B:3817:LEU:HD12	1:B:3899:PHE:HD1	1.86	0.40
1:B:4892:ARG:CG	1:B:4892:ARG:O	2.70	0.40
1:D:619:ASP:HA	1:D:622:THR:HG22	2.02	0.40
1:D:1101:ARG:HB3	1:D:1123:VAL:HG21	2.03	0.40
1:D:1828:ASP:N	1:D:1829:PRO:HD2	2.36	0.40
1:D:4230:LYS:O	1:D:4233:LEU:HG	2.21	0.40
1:C:438:ILE:HD13	1:C:438:ILE:HA	1.94	0.40
1:C:3986:TRP:HD1	1:C:4047:MET:HG3	1.86	0.40
1:A:139:GLU:O	1:A:141:ALA:N	2.50	0.40
1:A:877:ASN:HD22	1:A:1045:THR:HG21	1.85	0.40
1:A:891:TRP:CG	1:A:902:ARG:HB3	2.57	0.40
1:A:977:LEU:HG	1:A:978:THR:HG22	2.03	0.40

Continued on next page...

Continued from previous page...

Atom-1	Atom-2	Interatomic distance (Å)	Clash overlap (Å)
1:A:2212:VAL:HG12	1:A:2256:TYR:OH	2.21	0.40
1:A:3674:ILE:HD11	1:A:3728:ILE:HG22	2.03	0.40
1:A:4578:LEU:HA	1:D:4879:MET:SD	2.61	0.40
1:A:4703:ARG:HA	1:A:4706:LEU:HD12	2.02	0.40
1:B:950:LEU:HB3	1:B:970:LEU:HD22	2.04	0.40
1:B:1111:PRO:HD3	1:B:1605:TRP:HE1	1.86	0.40
1:B:3658:LYS:HD2	1:B:3661:TRP:CZ3	2.56	0.40
1:D:35:LEU:HD13	1:D:49:LEU:HD13	2.03	0.40
1:D:763:PRO:O	1:D:765:GLN:NE2	2.55	0.40
1:D:4012:LEU:O	1:D:4015:GLU:HG3	2.20	0.40
1:C:139:GLU:O	1:C:141:ALA:N	2.53	0.40
1:C:350:HIS:O	1:C:354:GLY:N	2.51	0.40
1:C:488:LEU:HD22	1:C:546:TRP:CH2	2.57	0.40
1:C:869:ARG:HH11	1:C:870:ILE:HB	1.86	0.40
1:C:2116:LEU:HG	1:C:2120:MET:CE	2.51	0.40
1:C:4022:ASP:HA	1:C:4025:VAL:HG12	2.03	0.40
1:C:4716:TRP:HH2	1:C:4996:ILE:HG13	1.85	0.40
1:A:4180:ARG:HE	1:A:4981:GLU:HG3	1.85	0.40
1:B:181:HIS:NE2	1:B:182:LEU:O	2.54	0.40
1:B:445:LEU:HD23	1:B:521:LEU:HB3	2.02	0.40
1:B:1079:LYS:HA	1:B:1189:LEU:HD11	2.03	0.40
1:B:1221:GLU:HB3	1:B:1223:PHE:CD1	2.56	0.40
1:B:1810:LYS:HE3	1:B:1810:LYS:HB2	1.87	0.40
1:B:4081:VAL:HB	1:B:4088:ILE:HD13	2.04	0.40
1:D:498:THR:HG23	1:D:499:THR:N	2.37	0.40
1:D:2116:LEU:HG	1:D:2120:MET:CE	2.51	0.40
1:D:2802:LYS:HA	1:D:2802:LYS:HD2	1.83	0.40
1:D:2877:GLN:HE22	1:D:2939:ARG:HH22	1.68	0.40
1:D:4837:LEU:O	1:D:4841:VAL:HG23	2.21	0.40
1:A:1668:ARG:O	1:A:1671:ARG:HG2	2.22	0.40
1:A:2442:LEU:HD23	1:A:2442:LEU:H	1.85	0.40
1:A:2447:LYS:HG3	1:A:2449:GLU:H	1.87	0.40
1:A:4207:MET:HE1	1:A:4210:VAL:HG23	2.02	0.40
1:B:45:ARG:HG2	1:B:443:LEU:HD21	2.03	0.40
1:B:192:ASP:OD1	1:B:192:ASP:N	2.51	0.40
1:B:567:VAL:HG13	1:B:568:LEU:HD12	2.03	0.40
1:D:765:GLN:HG3	1:D:1388:UNK:C	2.52	0.40
1:D:966:LYS:HB2	1:D:966:LYS:HE3	1.36	0.40
1:D:1948:ASP:OD1	1:D:2126:ARG:NH2	2.52	0.40
1:C:758:ARG:HH22	1:C:805:PRO:HD3	1.86	0.40
1:C:1118:ASP:OD1	1:C:1118:ASP:N	2.55	0.40

Continued on next page...

Continued from previous page...

Atom-1	Atom-2	Interatomic distance (Å)	Clash overlap (Å)
1:C:1129:GLY:O	1:C:1139:PHE:N	2.39	0.40
1:C:1829:PRO:HB2	1:C:1837:GLN:HB2	2.03	0.40
1:C:3648:ARG:HG2	1:C:3652:MET:HE1	2.02	0.40
1:C:4875:LYS:O	1:C:4882:CYS:HB2	2.21	0.40
1:A:118:LEU:HD12	1:A:137:LEU:HB3	2.02	0.40
1:A:349:GLN:HB2	1:A:356:TRP:CD1	2.57	0.40
1:A:876:GLU:O	1:A:880:GLU:HG2	2.22	0.40
1:A:1252:HIS:ND1	1:A:1255:TYR:HB2	2.37	0.40
1:A:3737:GLU:HA	1:A:3763:LEU:CG	2.51	0.40
1:A:3999:MET:O	1:A:4003:LEU:CB	2.70	0.40
1:A:4933:GLN:O	1:A:4937:ILE:HG12	2.22	0.40
1:B:492:ASP:OD2	1:B:546:TRP:NE1	2.48	0.40
1:B:3763:LEU:O	1:B:3767:GLN:HG2	2.21	0.40
1:B:4572:ALA:O	1:B:4576:ILE:HG12	2.20	0.40
1:D:719:LEU:O	1:D:719:LEU:HG	2.22	0.40

There are no symmetry-related clashes.

5.3 Torsion angles

5.3.1 Protein backbone

In the following table, the Percentiles column shows the percent Ramachandran outliers of the chain as a percentile score with respect to all PDB entries followed by that with respect to all EM entries.

The Analysed column shows the number of residues for which the backbone conformation was analysed, and the total number of residues.

Mol	Chain	Analysed	Favoured	Allowed	Outliers	Percentiles	
1	A	3172/5037 (63%)	2945 (93%)	222 (7%)	5 (0%)	47	81
1	B	3172/5037 (63%)	2926 (92%)	240 (8%)	6 (0%)	47	81
1	C	3172/5037 (63%)	2921 (92%)	246 (8%)	5 (0%)	47	81
1	D	3172/5037 (63%)	2930 (92%)	238 (8%)	4 (0%)	51	85
All	All	12688/20148 (63%)	11722 (92%)	946 (8%)	20 (0%)	50	81

All (20) Ramachandran outliers are listed below:

Mol	Chain	Res	Type
1	A	4865	LYS
1	B	4875	LYS
1	B	4876	CYS
1	D	3771	HIS
1	B	1708	ARG
1	B	4865	LYS
1	D	1708	ARG
1	C	3771	HIS
1	C	4875	LYS
1	D	4867	GLU
1	A	1840	PRO
1	A	4867	GLU
1	A	4875	LYS
1	C	4867	GLU
1	B	4869	GLU
1	C	1840	PRO
1	A	4869	GLU
1	C	1708	ARG
1	B	1840	PRO
1	D	1840	PRO

5.3.2 Protein sidechains ⓘ

In the following table, the Percentiles column shows the percent sidechain outliers of the chain as a percentile score with respect to all PDB entries followed by that with respect to all EM entries.

The Analysed column shows the number of residues for which the sidechain conformation was analysed, and the total number of residues.

Mol	Chain	Analysed	Rotameric	Outliers	Percentiles	
1	A	2464/3264 (76%)	2444 (99%)	20 (1%)	81	89
1	B	2455/3264 (75%)	2430 (99%)	25 (1%)	76	86
1	C	2459/3264 (75%)	2433 (99%)	26 (1%)	73	85
1	D	2455/3264 (75%)	2440 (99%)	15 (1%)	86	92
All	All	9833/13056 (75%)	9747 (99%)	86 (1%)	79	88

All (86) residues with a non-rotameric sidechain are listed below:

Mol	Chain	Res	Type
1	A	275	ARG
1	A	495	ASN

Continued on next page...

Continued from previous page...

Mol	Chain	Res	Type
1	A	869	ARG
1	A	1110	ARG
1	A	1128	ARG
1	A	3751	VAL
1	A	3753	PHE
1	A	3755	GLU
1	A	3758	MET
1	A	3759	GLU
1	A	3760	LYS
1	A	3762	ARG
1	A	3763	LEU
1	A	3773	ARG
1	A	3897	ASN
1	A	4866	SER
1	A	4869	GLU
1	A	4871	GLU
1	A	4874	MET
1	A	4875	LYS
1	B	178	ARG
1	B	275	ARG
1	B	869	ARG
1	B	884	LEU
1	B	887	ILE
1	B	1128	ARG
1	B	2435	ARG
1	B	2881	ASN
1	B	3754	GLU
1	B	3756	LYS
1	B	3757	GLU
1	B	3760	LYS
1	B	3761	GLN
1	B	3762	ARG
1	B	3763	LEU
1	B	3764	LEU
1	B	3768	SER
1	B	3773	ARG
1	B	3809	ASN
1	B	4868	ASP
1	B	4871	GLU
1	B	4875	LYS
1	B	4921	PHE
1	B	4922	PHE

Continued on next page...

Continued from previous page...

Mol	Chain	Res	Type
1	B	4925	ILE
1	D	275	ARG
1	D	966	LYS
1	D	1035	ASN
1	D	1110	ARG
1	D	1128	ARG
1	D	3759	GLU
1	D	3762	ARG
1	D	3763	LEU
1	D	3767	GLN
1	D	3768	SER
1	D	3769	ARG
1	D	3773	ARG
1	D	4867	GLU
1	D	4868	ASP
1	D	4870	ASP
1	C	275	ARG
1	C	495	ASN
1	C	869	ARG
1	C	1128	ARG
1	C	3758	MET
1	C	3759	GLU
1	C	3760	LYS
1	C	3761	GLN
1	C	3762	ARG
1	C	3763	LEU
1	C	3767	GLN
1	C	3769	ARG
1	C	3770	LEU
1	C	3773	ARG
1	C	4852	THR
1	C	4865	LYS
1	C	4866	SER
1	C	4867	GLU
1	C	4868	ASP
1	C	4869	GLU
1	C	4874	MET
1	C	4875	LYS
1	C	4884	LEU
1	C	4885	PHE
1	C	4887	MET
1	C	4892	ARG

Sometimes sidechains can be flipped to improve hydrogen bonding and reduce clashes. All (25) such sidechains are listed below:

Mol	Chain	Res	Type
1	A	23	GLN
1	A	203	ASN
1	A	479	GLN
1	A	1254	HIS
1	A	3700	GLN
1	A	3897	ASN
1	B	23	GLN
1	B	203	ASN
1	B	479	GLN
1	B	1254	HIS
1	B	3761	GLN
1	D	23	GLN
1	D	203	ASN
1	D	1254	HIS
1	D	1702	HIS
1	D	3761	GLN
1	D	3771	HIS
1	D	3809	ASN
1	D	4020	GLN
1	C	23	GLN
1	C	203	ASN
1	C	479	GLN
1	C	3771	HIS
1	C	3781	GLN
1	C	4020	GLN

5.3.3 RNA [i](#)

There are no RNA molecules in this entry.

5.4 Non-standard residues in protein, DNA, RNA chains [i](#)

There are no non-standard protein/DNA/RNA residues in this entry.

5.5 Carbohydrates [i](#)

There are no monosaccharides in this entry.

5.6 Ligand geometry

Of 8 ligands modelled in this entry, 4 are monoatomic - leaving 4 for Mogul analysis.

In the following table, the Counts columns list the number of bonds (or angles) for which Mogul statistics could be retrieved, the number of bonds (or angles) that are observed in the model and the number of bonds (or angles) that are defined in the Chemical Component Dictionary. The Link column lists molecule types, if any, to which the group is linked. The Z score for a bond length (or angle) is the number of standard deviations the observed value is removed from the expected value. A bond length (or angle) with $|Z| > 2$ is considered an outlier worth inspection. RMSZ is the root-mean-square of all Z scores of the bond lengths (or angles).

Mol	Type	Chain	Res	Link	Bond lengths			Bond angles		
					Counts	RMSZ	# Z > 2	Counts	RMSZ	# Z > 2
2	ACP	B	5101	-	27,33,33	1.38	5 (18%)	32,52,52	1.44	4 (12%)
2	ACP	A	5101	-	27,33,33	1.38	5 (18%)	32,52,52	1.46	4 (12%)
2	ACP	C	5101	-	27,33,33	1.38	5 (18%)	32,52,52	1.42	4 (12%)
2	ACP	D	5101	-	27,33,33	1.38	5 (18%)	32,52,52	1.45	4 (12%)

In the following table, the Chirals column lists the number of chiral outliers, the number of chiral centers analysed, the number of these observed in the model and the number defined in the Chemical Component Dictionary. Similar counts are reported in the Torsion and Rings columns. '-' means no outliers of that kind were identified.

Mol	Type	Chain	Res	Link	Chirals	Torsions	Rings
2	ACP	B	5101	-	-	2/15/38/38	0/3/3/3
2	ACP	A	5101	-	-	3/15/38/38	0/3/3/3
2	ACP	C	5101	-	-	2/15/38/38	0/3/3/3
2	ACP	D	5101	-	-	2/15/38/38	0/3/3/3

All (20) bond length outliers are listed below:

Mol	Chain	Res	Type	Atoms	Z	Observed(Å)	Ideal(Å)
2	A	5101	ACP	PG-O2G	2.87	1.61	1.54
2	A	5101	ACP	PG-O3G	2.86	1.61	1.54
2	D	5101	ACP	PG-O3G	2.85	1.61	1.54
2	D	5101	ACP	PG-O2G	2.85	1.61	1.54
2	B	5101	ACP	PG-O2G	2.85	1.61	1.54
2	B	5101	ACP	PG-O3G	2.84	1.61	1.54
2	C	5101	ACP	PG-O2G	2.83	1.61	1.54
2	C	5101	ACP	PG-O3G	2.82	1.61	1.54
2	C	5101	ACP	PB-O3A	2.82	1.61	1.58
2	B	5101	ACP	PB-O3A	2.78	1.61	1.58

Continued on next page...

Continued from previous page...

Mol	Chain	Res	Type	Atoms	Z	Observed(Å)	Ideal(Å)
2	D	5101	ACP	PB-O3A	2.77	1.61	1.58
2	A	5101	ACP	PB-O3A	2.74	1.61	1.58
2	D	5101	ACP	C5-C4	2.50	1.47	1.40
2	A	5101	ACP	C5-C4	2.49	1.47	1.40
2	C	5101	ACP	C5-C4	2.48	1.47	1.40
2	B	5101	ACP	C5-C4	2.47	1.47	1.40
2	B	5101	ACP	PB-O2B	2.17	1.61	1.56
2	D	5101	ACP	PB-O2B	2.17	1.61	1.56
2	C	5101	ACP	PB-O2B	2.17	1.61	1.56
2	A	5101	ACP	PB-O2B	2.14	1.61	1.56

All (16) bond angle outliers are listed below:

Mol	Chain	Res	Type	Atoms	Z	Observed(°)	Ideal(°)
2	A	5101	ACP	PB-O3A-PA	-3.95	120.05	132.56
2	D	5101	ACP	PB-O3A-PA	-3.84	120.40	132.56
2	B	5101	ACP	PB-O3A-PA	-3.73	120.73	132.56
2	C	5101	ACP	PB-O3A-PA	-3.57	121.25	132.56
2	D	5101	ACP	C3'-C2'-C1'	3.45	106.17	100.98
2	B	5101	ACP	C3'-C2'-C1'	3.42	106.13	100.98
2	A	5101	ACP	C3'-C2'-C1'	3.42	106.12	100.98
2	C	5101	ACP	C3'-C2'-C1'	3.40	106.10	100.98
2	D	5101	ACP	N3-C2-N1	-3.19	123.70	128.68
2	B	5101	ACP	N3-C2-N1	-3.18	123.71	128.68
2	A	5101	ACP	N3-C2-N1	-3.15	123.75	128.68
2	C	5101	ACP	N3-C2-N1	-3.15	123.76	128.68
2	A	5101	ACP	C4-C5-N7	-2.73	106.56	109.40
2	C	5101	ACP	C4-C5-N7	-2.69	106.60	109.40
2	B	5101	ACP	C4-C5-N7	-2.68	106.60	109.40
2	D	5101	ACP	C4-C5-N7	-2.64	106.64	109.40

There are no chirality outliers.

All (9) torsion outliers are listed below:

Mol	Chain	Res	Type	Atoms
2	A	5101	ACP	C3'-C4'-C5'-O5'
2	A	5101	ACP	O4'-C4'-C5'-O5'
2	B	5101	ACP	C3'-C4'-C5'-O5'
2	C	5101	ACP	C3'-C4'-C5'-O5'
2	D	5101	ACP	C3'-C4'-C5'-O5'
2	C	5101	ACP	O4'-C4'-C5'-O5'
2	B	5101	ACP	O4'-C4'-C5'-O5'

Continued on next page...

Continued from previous page...

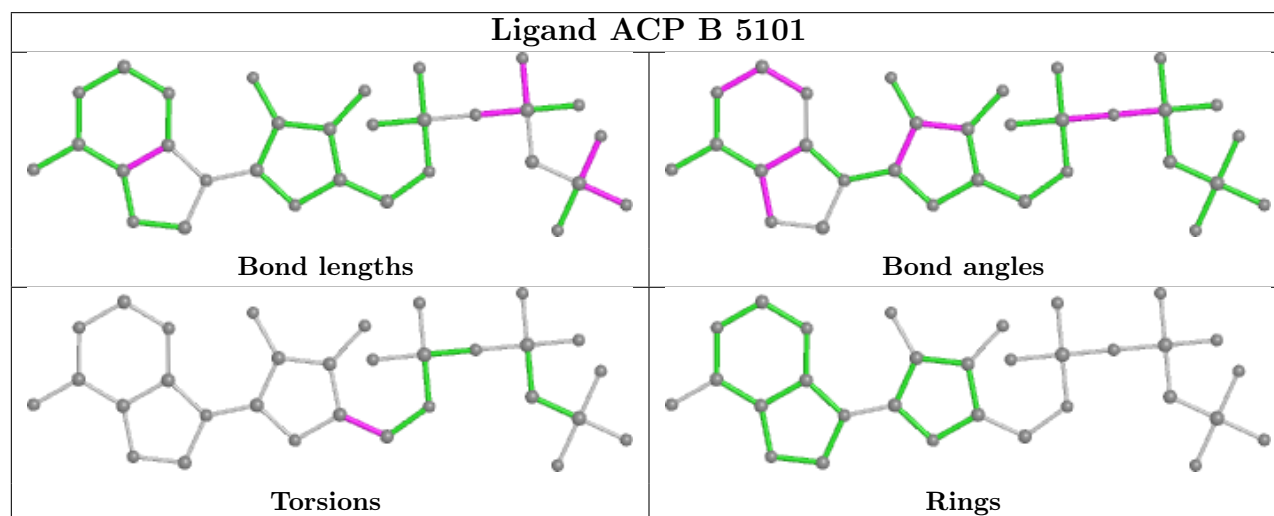
Mol	Chain	Res	Type	Atoms
2	D	5101	ACP	O4'-C4'-C5'-O5'
2	A	5101	ACP	PB-O3A-PA-O5'

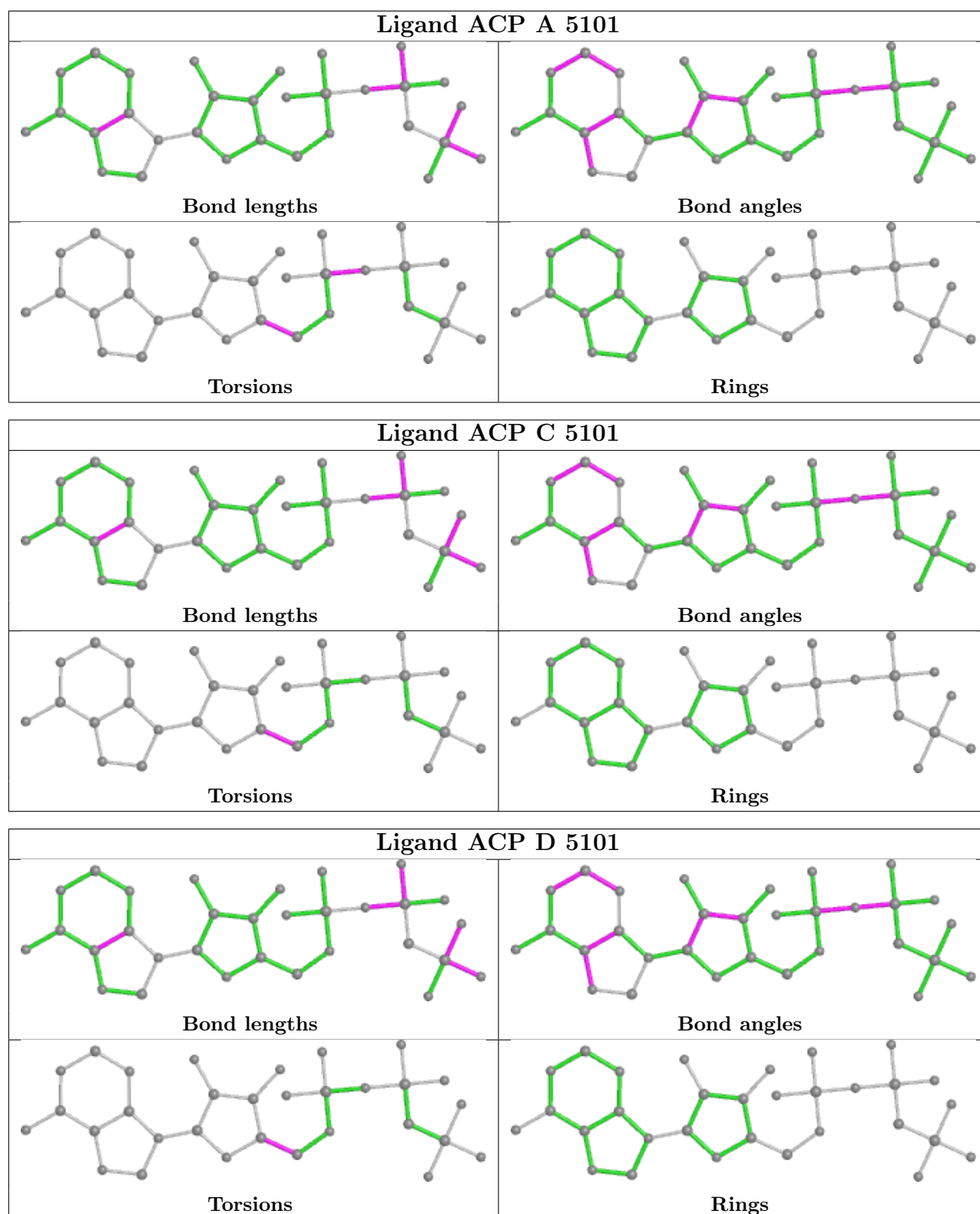
There are no ring outliers.

4 monomers are involved in 22 short contacts:

Mol	Chain	Res	Type	Clashes	Symm-Clashes
2	B	5101	ACP	4	0
2	A	5101	ACP	6	0
2	C	5101	ACP	7	0
2	D	5101	ACP	5	0

The following is a two-dimensional graphical depiction of Mogul quality analysis of bond lengths, bond angles, torsion angles, and ring geometry for all instances of the Ligand of Interest. In addition, ligands with molecular weight > 250 and outliers as shown on the validation Tables will also be included. For torsion angles, if less than 5% of the Mogul distribution of torsion angles is within 10 degrees of the torsion angle in question, then that torsion angle is considered an outlier. Any bond that is central to one or more torsion angles identified as an outlier by Mogul will be highlighted in the graph. For rings, the root-mean-square deviation (RMSD) between the ring in question and similar rings identified by Mogul is calculated over all ring torsion angles. If the average RMSD is greater than 60 degrees and the minimal RMSD between the ring in question and any Mogul-identified rings is also greater than 60 degrees, then that ring is considered an outlier. The outliers are highlighted in purple. The color gray indicates Mogul did not find sufficient equivalents in the CSD to analyse the geometry.





5.7 Other polymers ⓘ

There are no such residues in this entry.

5.8 Polymer linkage issues ⓘ

The following chains have linkage breaks:

Mol	Chain	Number of breaks
1	B	7
1	D	7
1	A	7
1	C	7

All chain breaks are listed below:

Model	Chain	Residue-1	Atom-1	Residue-2	Atom-2	Distance (Å)
1	B	3288:UNK	C	3289:UNK	N	19.38
1	B	3510:UNK	C	3511:UNK	N	17.00
1	D	3191:UNK	C	3192:UNK	N	16.39
1	D	3510:UNK	C	3511:UNK	N	15.09
1	D	3288:UNK	C	3289:UNK	N	14.70
1	A	3288:UNK	C	3289:UNK	N	14.08
1	C	3510:UNK	C	3511:UNK	N	13.93
1	A	3510:UNK	C	3511:UNK	N	13.83
1	A	3122:UNK	C	3123:UNK	N	13.57
1	C	3288:UNK	C	3289:UNK	N	13.56
1	B	3221:UNK	C	3222:UNK	N	13.41
1	B	3122:UNK	C	3123:UNK	N	12.73
1	C	3302:UNK	C	3303:UNK	N	12.41
1	C	3122:UNK	C	3123:UNK	N	12.11
1	B	3302:UNK	C	3303:UNK	N	11.72
1	D	3221:UNK	C	3222:UNK	N	11.53
1	A	3221:UNK	C	3222:UNK	N	11.22
1	D	3122:UNK	C	3123:UNK	N	9.79
1	A	3191:UNK	C	3192:UNK	N	9.57
1	A	3302:UNK	C	3303:UNK	N	9.25
1	D	3302:UNK	C	3303:UNK	N	8.00
1	B	3191:UNK	C	3192:UNK	N	7.85
1	C	3221:UNK	C	3222:UNK	N	7.69
1	C	3191:UNK	C	3192:UNK	N	6.76
1	A	1297:UNK	C	1298:UNK	N	5.81
1	D	1297:UNK	C	1298:UNK	N	5.36
1	C	1297:UNK	C	1298:UNK	N	5.21
1	B	1297:UNK	C	1298:UNK	N	4.61

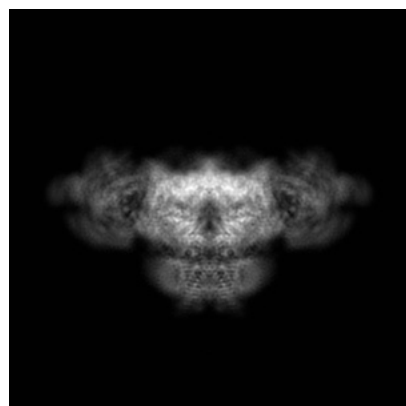
6 Map visualisation [i](#)

This section contains visualisations of the EMDB entry EMD-22616. These allow visual inspection of the internal detail of the map and identification of artifacts.

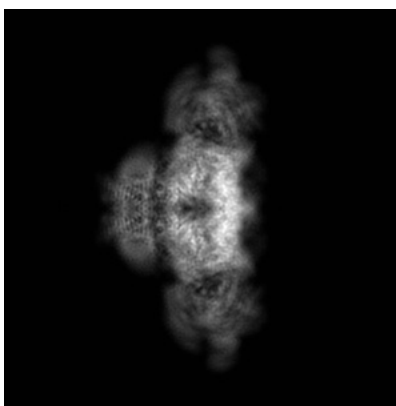
Images derived from a raw map, generated by summing the deposited half-maps, are presented below the corresponding image components of the primary map to allow further visual inspection and comparison with those of the primary map.

6.1 Orthogonal projections [i](#)

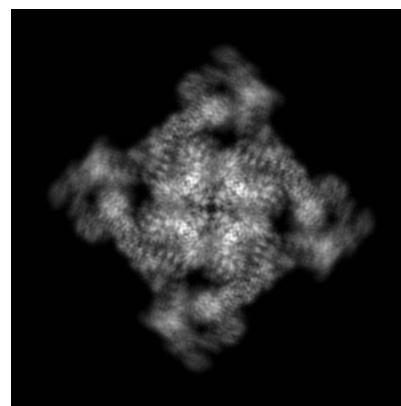
6.1.1 Primary map



X

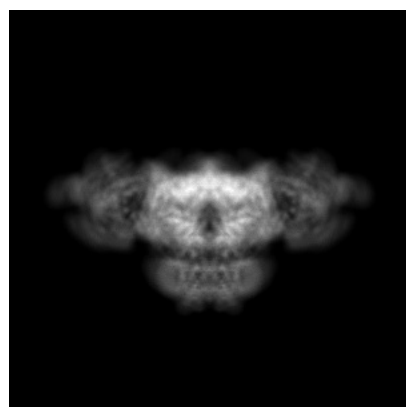


Y

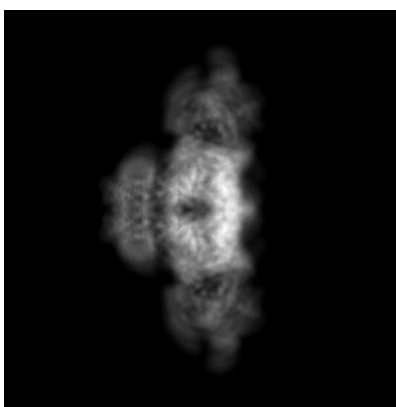


Z

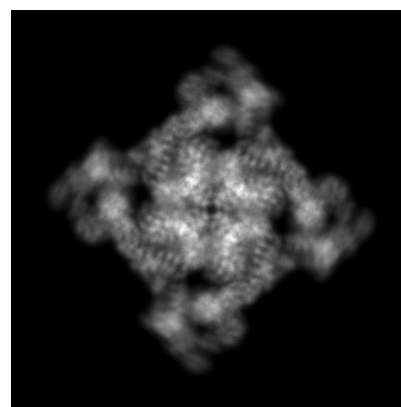
6.1.2 Raw map



X



Y

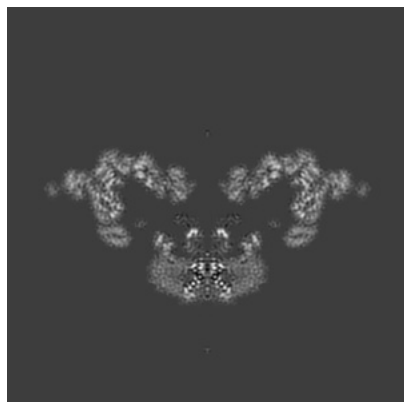


Z

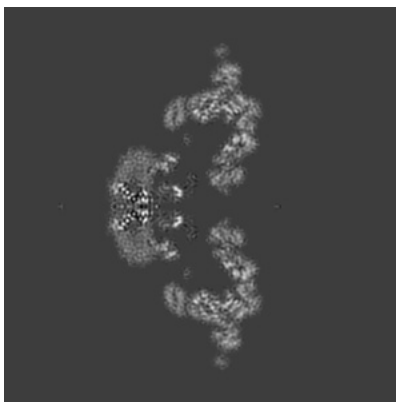
The images above show the map projected in three orthogonal directions.

6.2 Central slices [i](#)

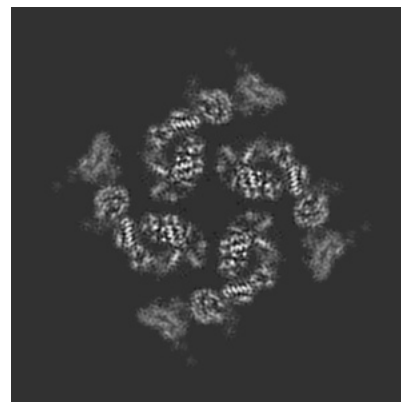
6.2.1 Primary map



X Index: 216

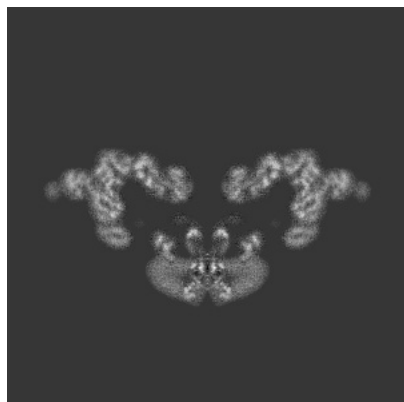


Y Index: 216

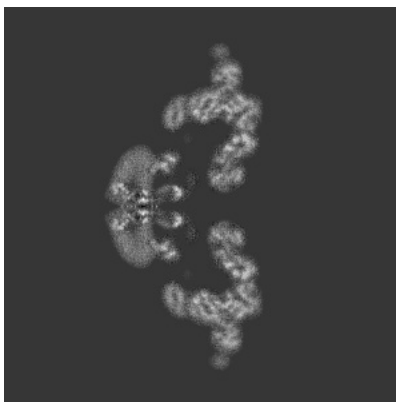


Z Index: 216

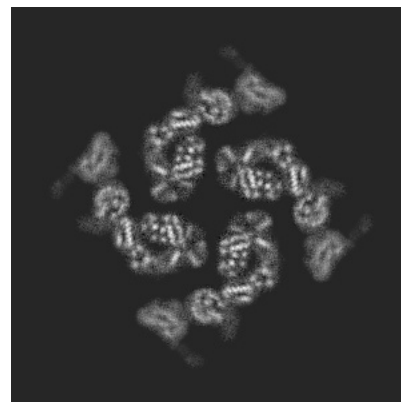
6.2.2 Raw map



X Index: 216



Y Index: 216

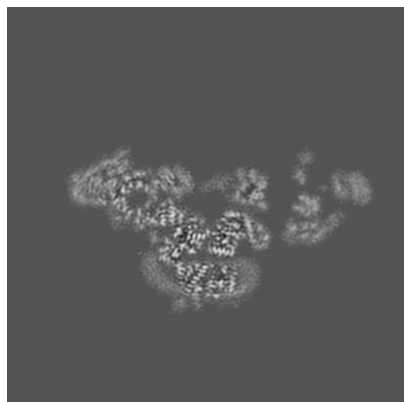


Z Index: 216

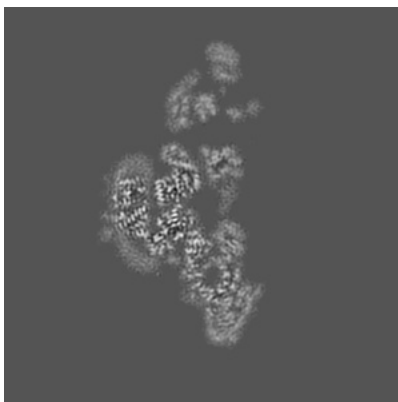
The images above show central slices of the map in three orthogonal directions.

6.3 Largest variance slices [i](#)

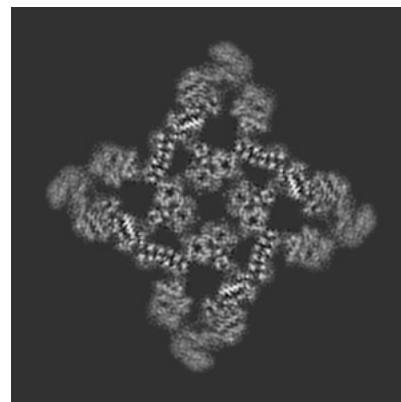
6.3.1 Primary map



X Index: 233

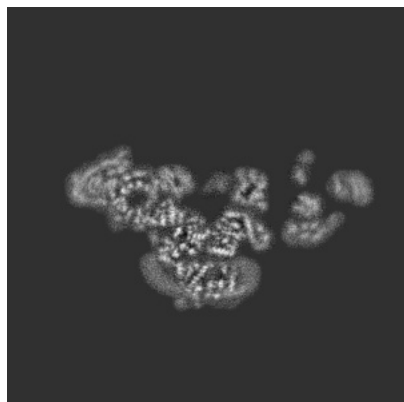


Y Index: 199

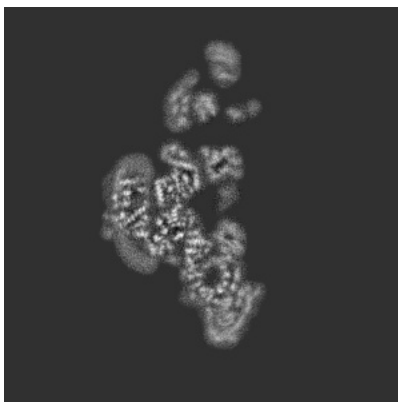


Z Index: 233

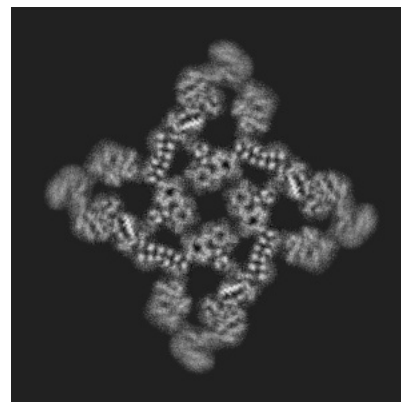
6.3.2 Raw map



X Index: 233



Y Index: 199

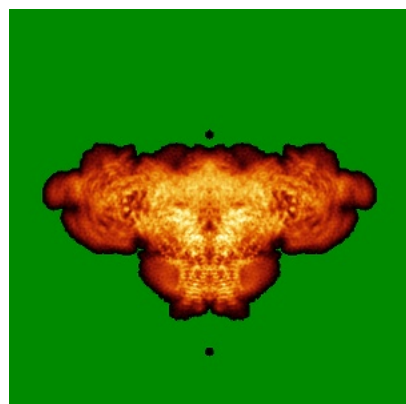


Z Index: 233

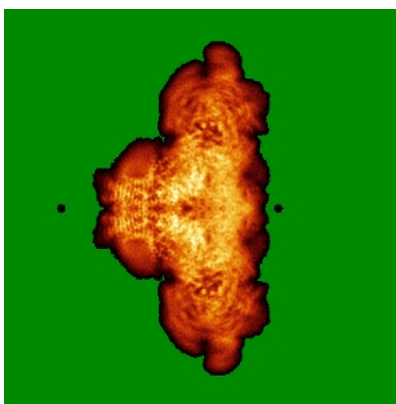
The images above show the largest variance slices of the map in three orthogonal directions.

6.4 Orthogonal standard-deviation projections (False-color) [i](#)

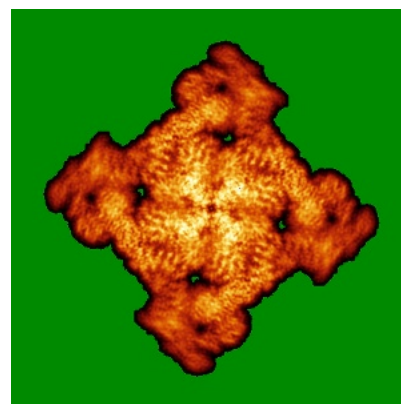
6.4.1 Primary map



X

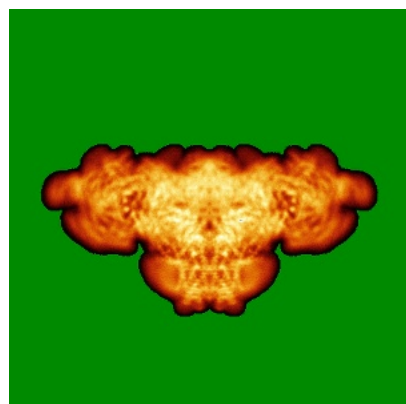


Y

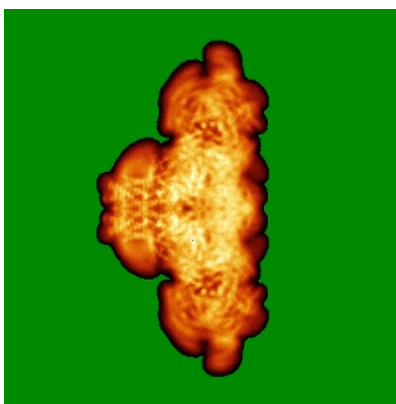


Z

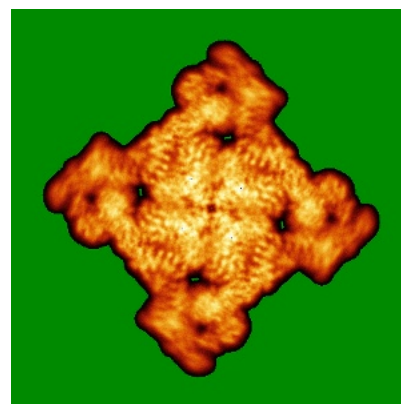
6.4.2 Raw map



X



Y

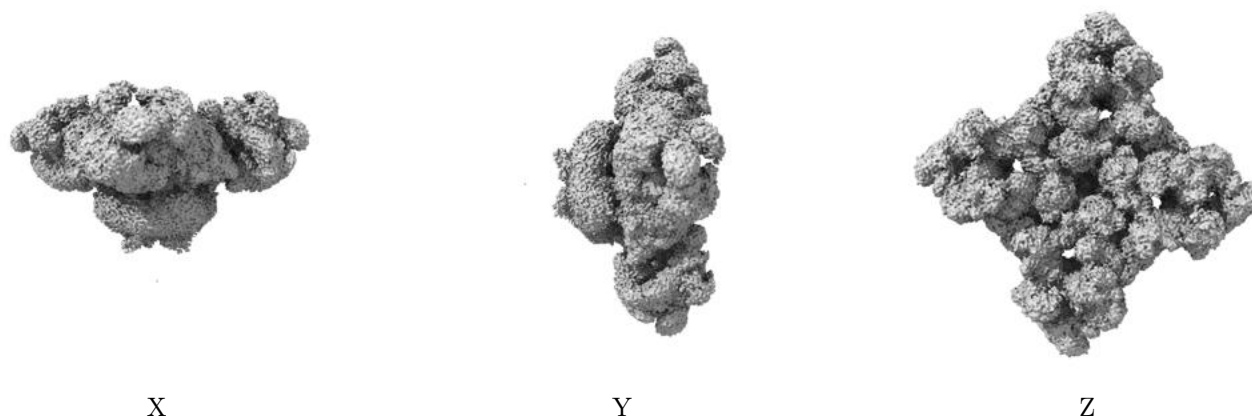


Z

The images above show the map standard deviation projections with false color in three orthogonal directions. Minimum values are shown in green, max in blue, and dark to light orange shades represent small to large values respectively.

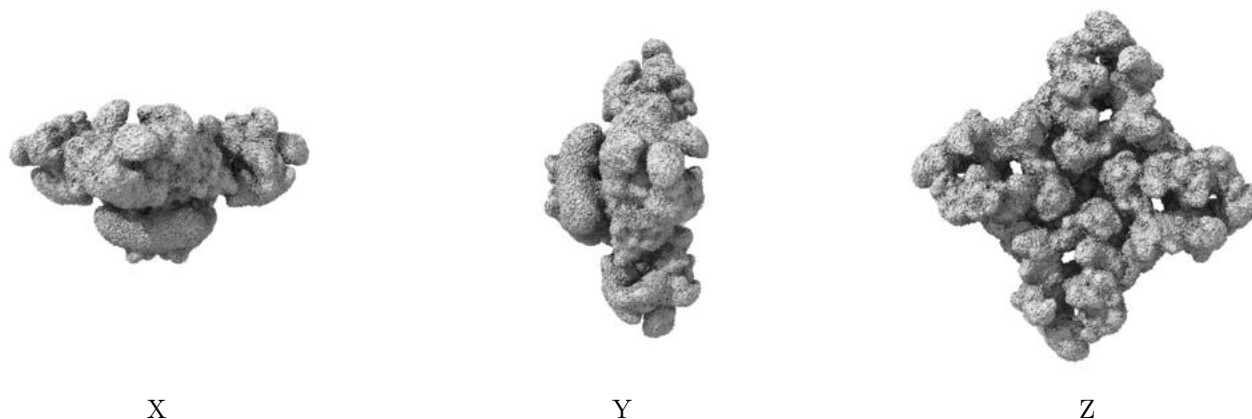
6.5 Orthogonal surface views [i](#)

6.5.1 Primary map



The images above show the 3D surface view of the map at the recommended contour level 0.01. These images, in conjunction with the slice images, may facilitate assessment of whether an appropriate contour level has been provided.

6.5.2 Raw map



These images show the 3D surface of the raw map. The raw map's contour level was selected so that its surface encloses the same volume as the primary map does at its recommended contour level.

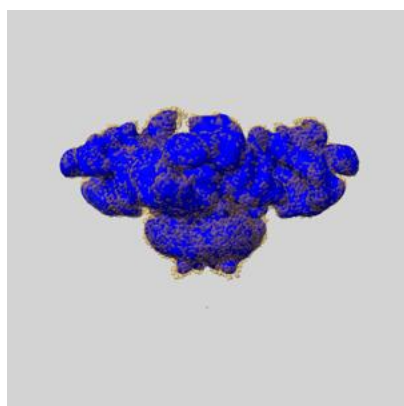
6.6 Mask visualisation [i](#)

This section shows the 3D surface view of the primary map at 50% transparency overlaid with the specified mask at 0% transparency

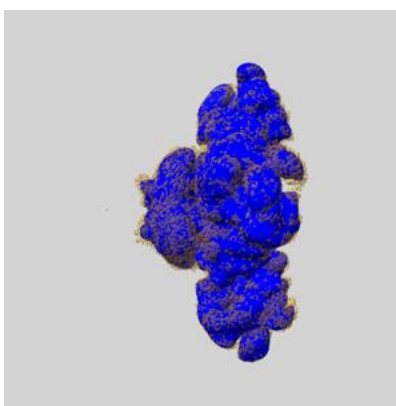
A mask typically either:

- Encompasses the whole structure
- Separates out a domain, a functional unit, a monomer or an area of interest from a larger structure

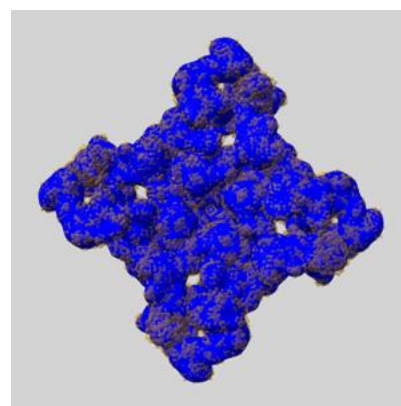
6.6.1 emd_22616_msk_1.map [i](#)



X



Y

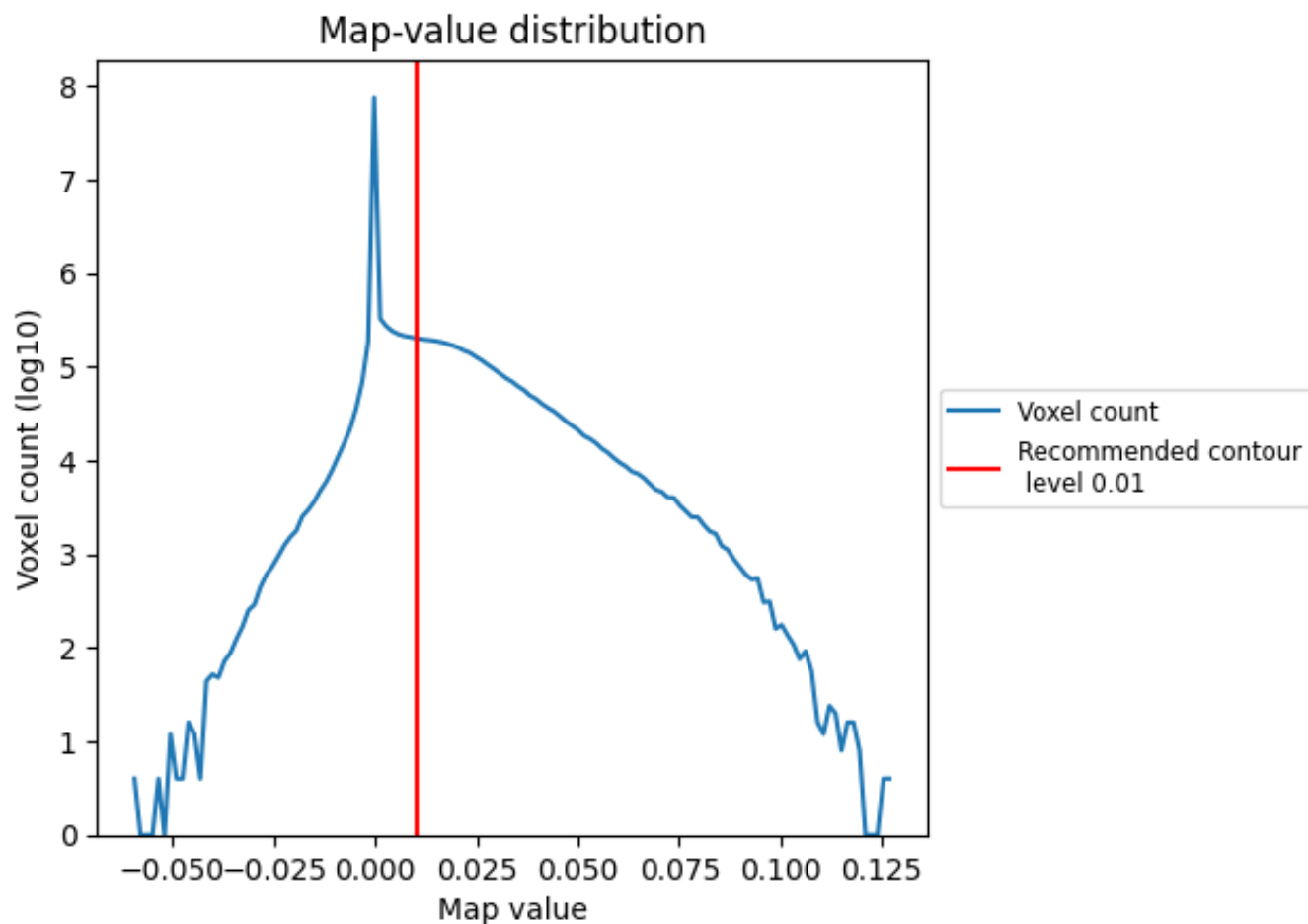


Z

7 Map analysis [i](#)

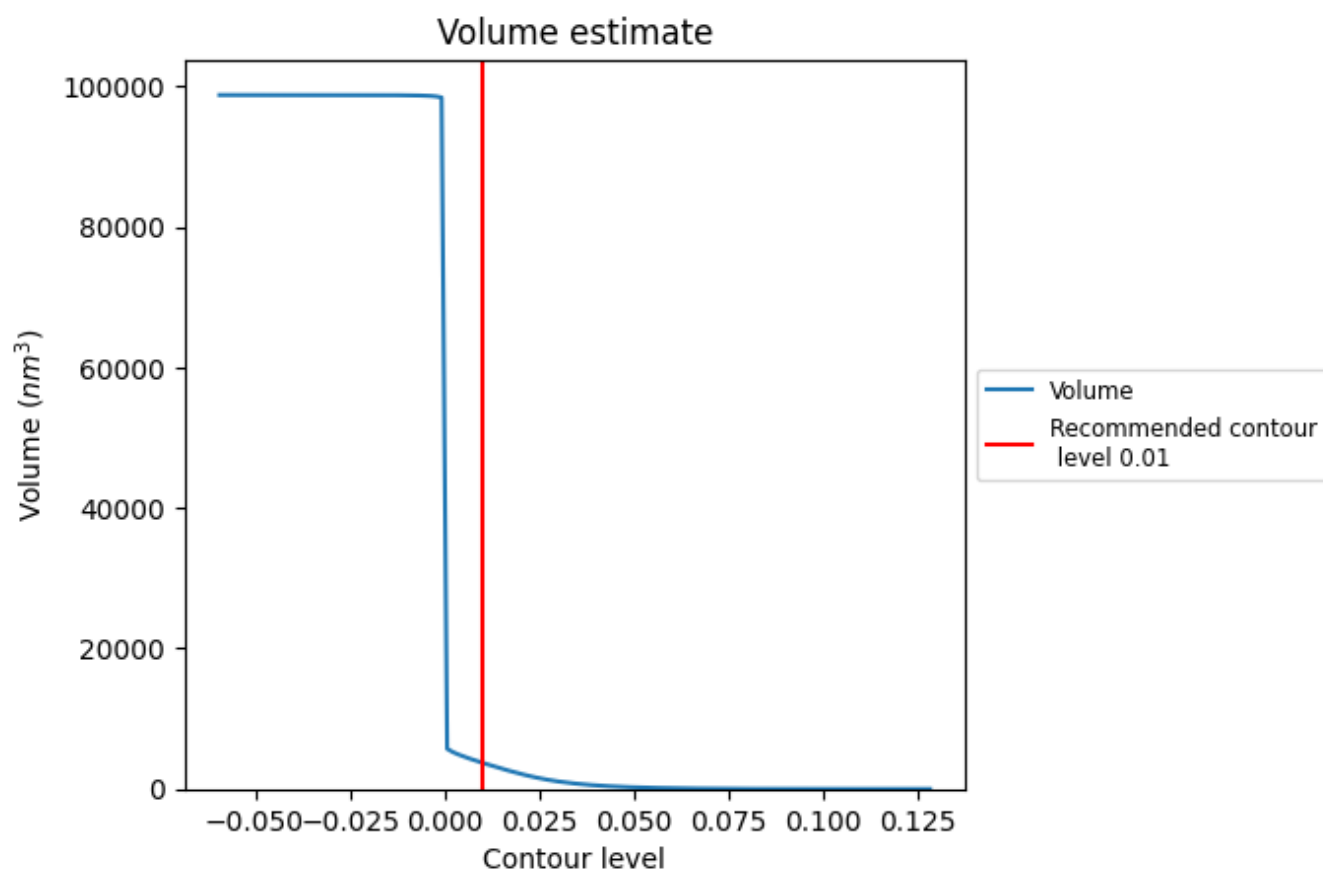
This section contains the results of statistical analysis of the map.

7.1 Map-value distribution [i](#)



The map-value distribution is plotted in 128 intervals along the x-axis. The y-axis is logarithmic. A spike in this graph at zero usually indicates that the volume has been masked.

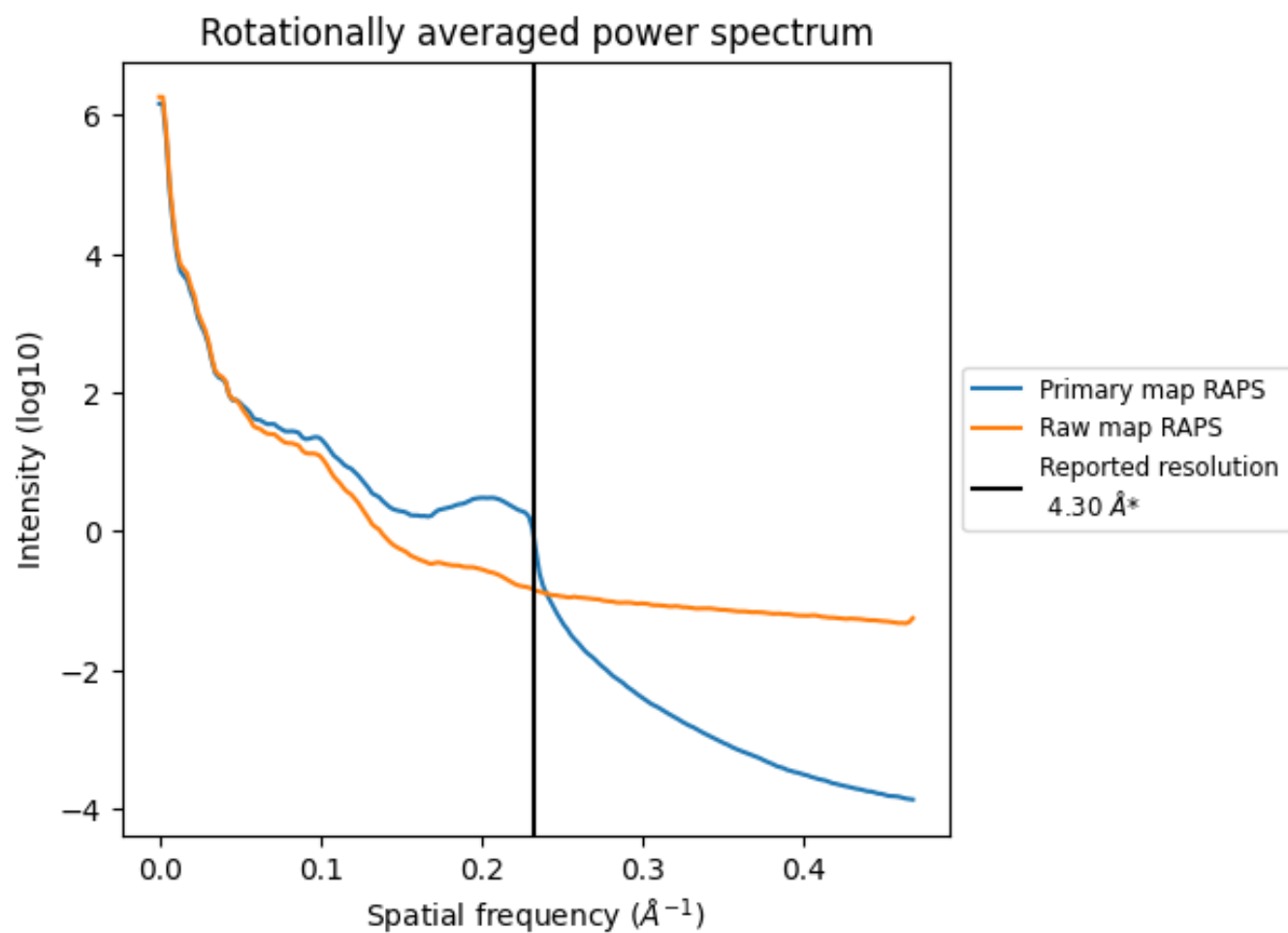
7.2 Volume estimate [i](#)



The volume at the recommended contour level is 3741 nm^3 ; this corresponds to an approximate mass of 3379 kDa.

The volume estimate graph shows how the enclosed volume varies with the contour level. The recommended contour level is shown as a vertical line and the intersection between the line and the curve gives the volume of the enclosed surface at the given level.

7.3 Rotationally averaged power spectrum ⓘ

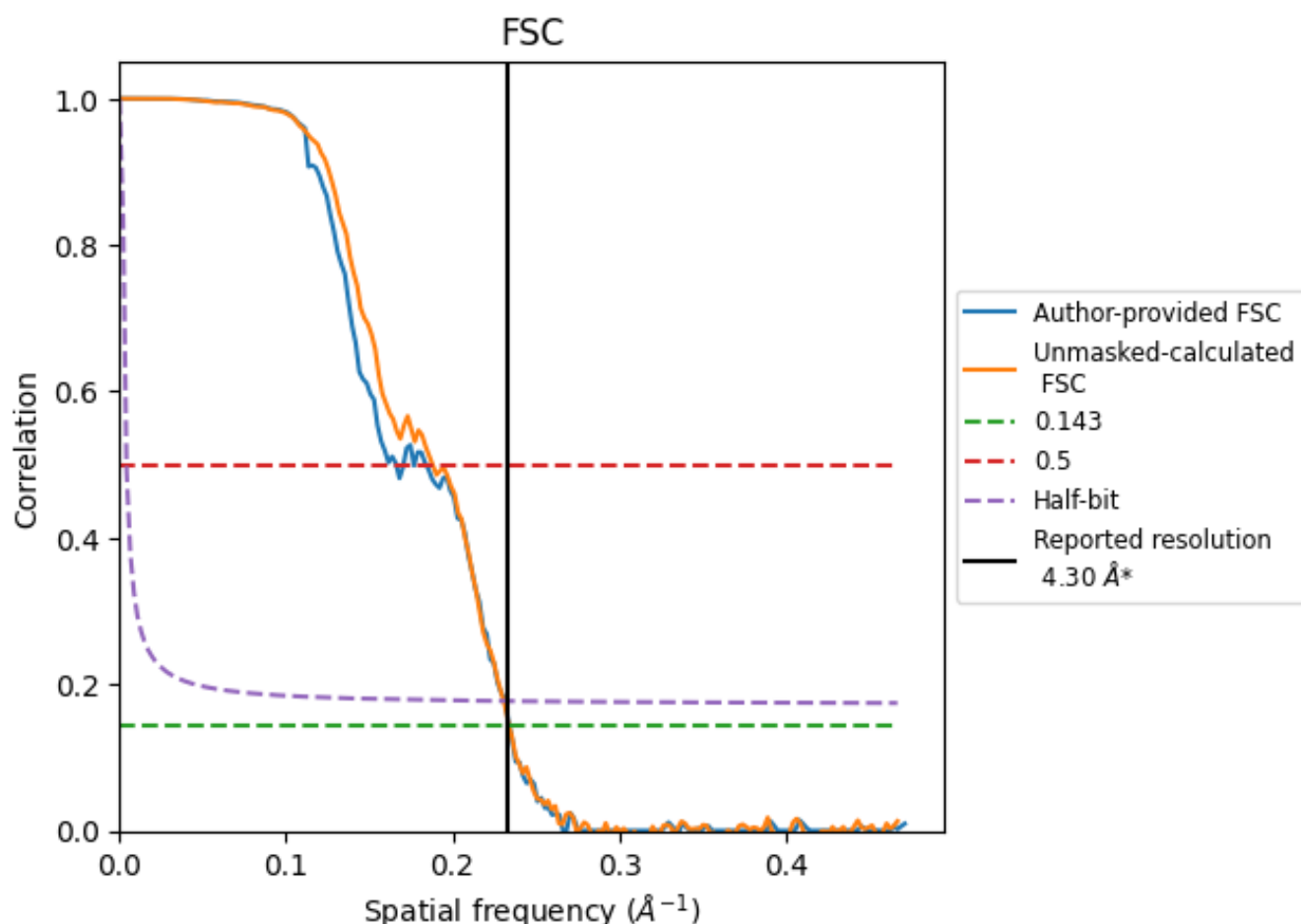


*Reported resolution corresponds to spatial frequency of 0.233 \AA^{-1}

8 Fourier-Shell correlation [i](#)

Fourier-Shell Correlation (FSC) is the most commonly used method to estimate the resolution of single-particle and subtomogram-averaged maps. The shape of the curve depends on the imposed symmetry, mask and whether or not the two 3D reconstructions used were processed from a common reference. The reported resolution is shown as a black line. A curve is displayed for the half-bit criterion in addition to lines showing the 0.143 gold standard cut-off and 0.5 cut-off.

8.1 FSC [i](#)



*Reported resolution corresponds to spatial frequency of 0.233 Å⁻¹

8.2 Resolution estimates [i](#)

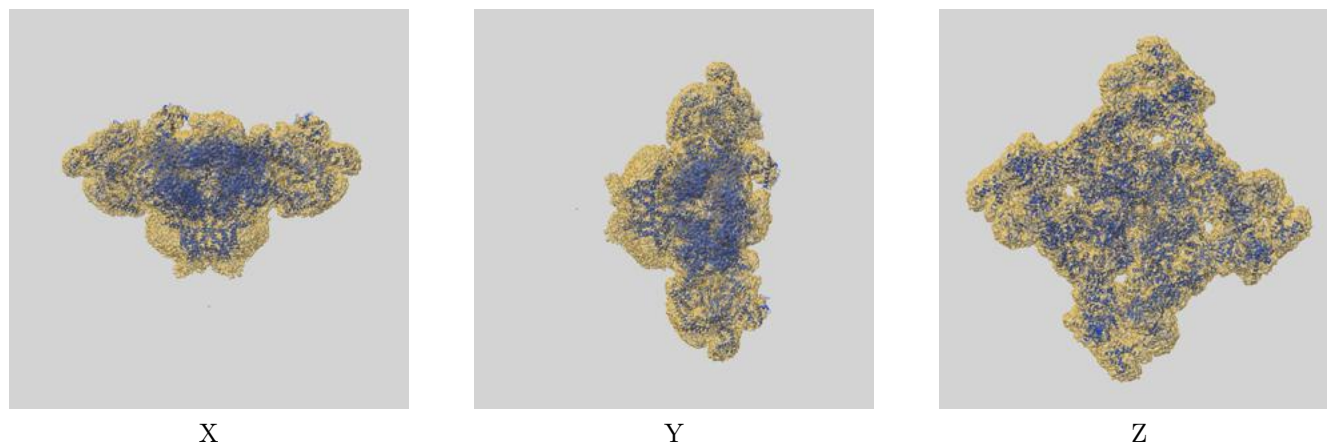
Resolution estimate (Å)	Estimation criterion (FSC cut-off)		
	0.143	0.5	Half-bit
Reported by author	4.30	-	-
Author-provided FSC curve	4.27	6.02	4.32
Unmasked-calculated*	4.27	5.31	4.33

*Resolution estimate based on FSC curve calculated by comparison of deposited half-maps.

9 Map-model fit [i](#)

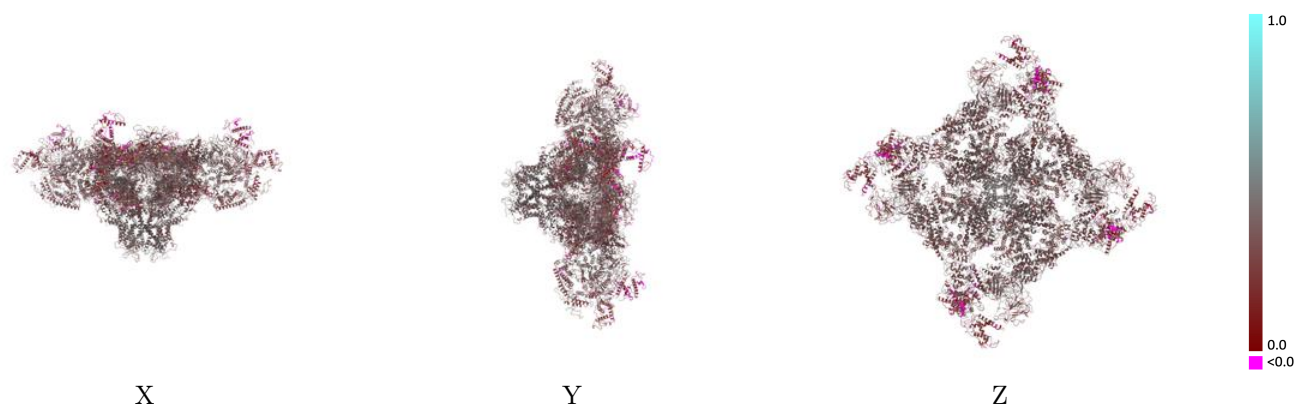
This section contains information regarding the fit between EMDB map EMD-22616 and PDB model 7K0T. Per-residue inclusion information can be found in section [3](#) on page [5](#).

9.1 Map-model overlay [i](#)



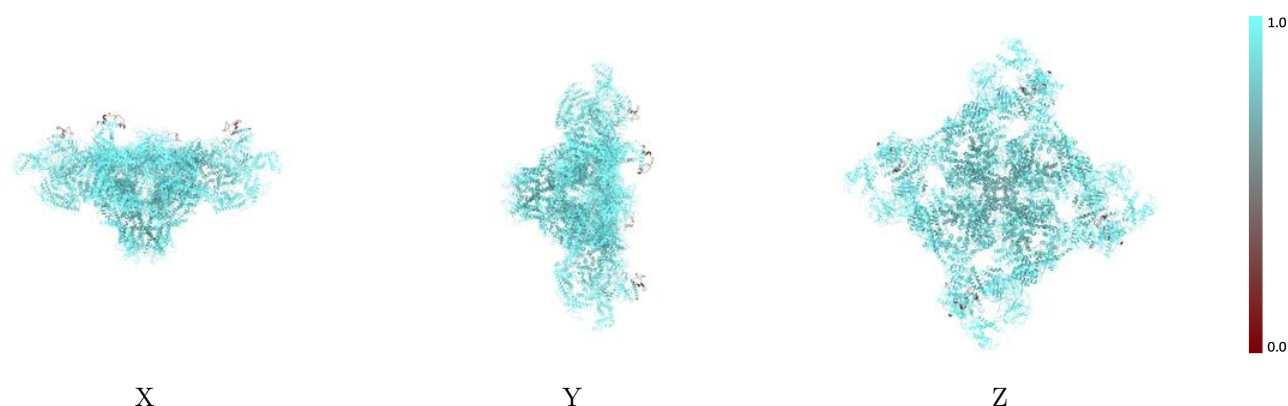
The images above show the 3D surface view of the map at the recommended contour level 0.01 at 50% transparency in yellow overlaid with a ribbon representation of the model coloured in blue. These images allow for the visual assessment of the quality of fit between the atomic model and the map.

9.2 Q-score mapped to coordinate model [i](#)



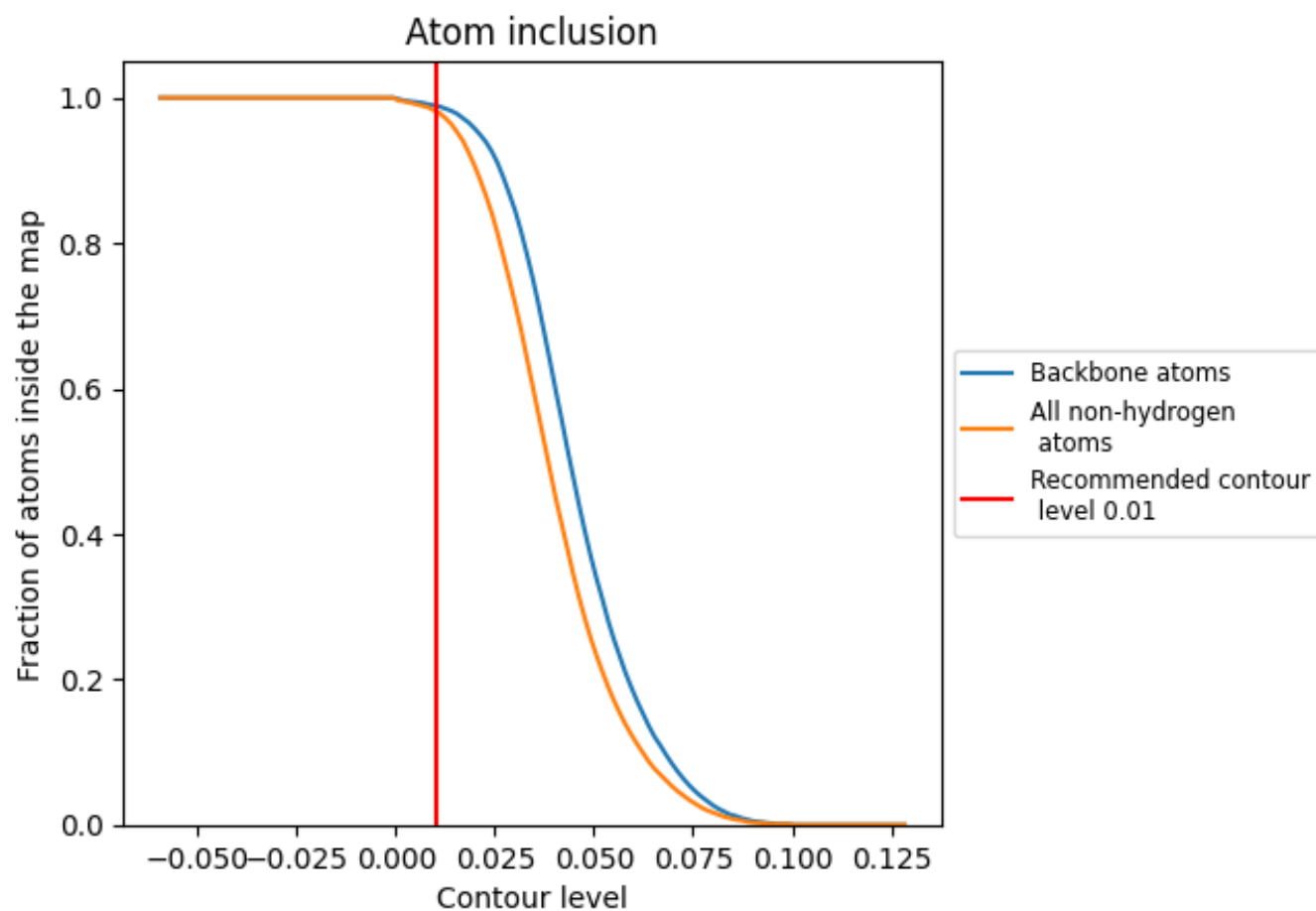
The images above show the model with each residue coloured according to its Q-score. This shows their resolvability in the map with higher Q-score values reflecting better resolvability. Please note: Q-score is calculating the resolvability of atoms, and thus high values are only expected at resolutions at which atoms can be resolved. Low Q-score values may therefore be expected for many entries.

9.3 Atom inclusion mapped to coordinate model [i](#)



The images above show the model with each residue coloured according to its atom inclusion. This shows to what extent they are inside the map at the recommended contour level (0.01).

9.4 Atom inclusion [i](#)



At the recommended contour level, 99% of all backbone atoms, 98% of all non-hydrogen atoms, are inside the map.

9.5 Map-model fit summary ⓘ

The table lists the average atom inclusion at the recommended contour level (0.01) and Q-score for the entire model and for each chain.

Chain	Atom inclusion	Q-score
All	<div></div> 0.9820	<div></div> 0.3320
A	<div></div> 0.9820	<div></div> 0.3320
B	<div></div> 0.9820	<div></div> 0.3310
C	<div></div> 0.9830	<div></div> 0.3320
D	<div></div> 0.9820	<div></div> 0.3320

