



# Full wwPDB X-ray Structure Validation Report ⓘ

Mar 19, 2025 – 01:05 PM EDT

PDB ID : 4JZZ  
Title : Crystal structure of CD4-mimetic miniprotein M48U1 in complex with HIV-1 YU2 gp120 in C2221 space group  
Authors : Acharya, P.; Kwong, P.D.  
Deposited on : 2013-04-03  
Resolution : 1.49 Å(reported)

This is a Full wwPDB X-ray Structure Validation Report for a publicly released PDB entry.

We welcome your comments at [validation@mail.wwpdb.org](mailto:validation@mail.wwpdb.org)

A user guide is available at

<https://www.wwpdb.org/validation/2017/XrayValidationReportHelp>

with specific help available everywhere you see the ⓘ symbol.

The types of validation reports are described at

<http://www.wwpdb.org/validation/2017/FAQs#types>.

---

The following versions of software and data (see [references ⓘ](#)) were used in the production of this report:

MolProbity	:	4.02b-467
Mogul	:	2022.3.0, CSD as543be (2022)
Xtriage (Phenix)	:	1.21
EDS	:	3.0
Percentile statistics	:	20231227.v01 (using entries in the PDB archive December 27th 2023)
CCP4	:	9.0.004 (Gargrove)
Density-Fitness	:	1.0.11
Ideal geometry (proteins)	:	Engh & Huber (2001)
Ideal geometry (DNA, RNA)	:	Parkinson et al. (1996)
Validation Pipeline (wwPDB-VP)	:	2.41.4

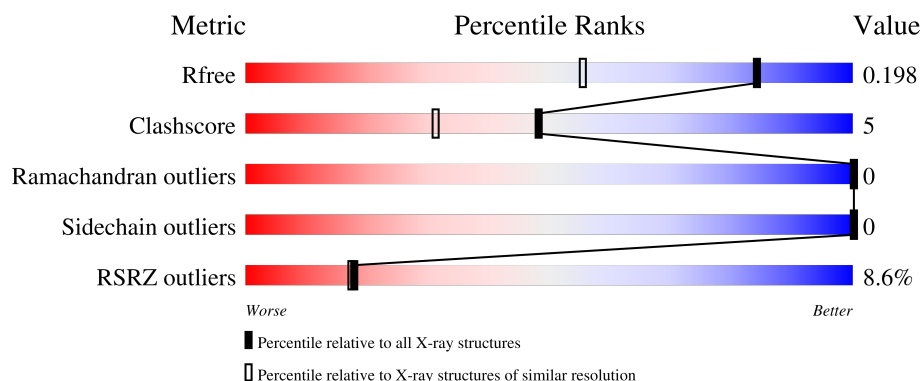
# 1 Overall quality at a glance

The following experimental techniques were used to determine the structure:

*X-RAY DIFFRACTION*

The reported resolution of this entry is 1.49 Å.

Percentile scores (ranging between 0-100) for global validation metrics of the entry are shown in the following graphic. The table shows the number of entries on which the scores are based.



Metric	Whole archive (#Entries)	Similar resolution (#Entries, resolution range(Å))
$R_{free}$	164625	3717 (1.50-1.50)
Clashscore	180529	4048 (1.50-1.50)
Ramachandran outliers	177936	3970 (1.50-1.50)
Sidechain outliers	177891	3967 (1.50-1.50)
RSRZ outliers	164620	3718 (1.50-1.50)

The table below summarises the geometric issues observed across the polymeric chains and their fit to the electron density. The red, orange, yellow and green segments of the lower bar indicate the fraction of residues that contain outliers for  $\geq 3$ , 2, 1 and 0 types of geometric quality criteria respectively. A grey segment represents the fraction of residues that are not modelled. The numeric value for each fraction is indicated below the corresponding segment, with a dot representing fractions  $\leq 5\%$ . The upper red bar (where present) indicates the fraction of residues that have poor fit to the electron density. The numeric value is given above the bar.

Mol	Chain	Length	Quality of chain
1	A	376	<div> <div>6%</div> <div> <div></div> <div>82%</div> <div>7%</div> <div>11%</div> </div> </div>
2	R	28	<div> <div>36%</div> <div> <div></div> <div>79%</div> <div>18%</div> <div>.</div> </div> </div>

## 2 Entry composition [i](#)

There are 7 unique types of molecules in this entry. The entry contains 3518 atoms, of which 0 are hydrogens and 0 are deuteriums.

In the tables below, the ZeroOcc column contains the number of atoms modelled with zero occupancy, the AltConf column contains the number of residues with at least one atom in alternate conformation and the Trace column contains the number of residues modelled with at most 2 atoms.

- Molecule 1 is a protein called HIV-1 YU2 gp120 glycoprotein.

Mol	Chain	Residues	Atoms					ZeroOcc	AltConf	Trace
1	A	336	Total	C	N	O	S	12	25	0
			2734	1723	465	516	30			

- Molecule 2 is a protein called CD4-MIMETIC MINIPROTEIN M48U1.

Mol	Chain	Residues	Atoms					ZeroOcc	AltConf	Trace
2	R	28	Total	C	N	O	S	0	4	1
			242	160	41	35	6			

- Molecule 3 is 2-acetamido-2-deoxy-beta-D-glucopyranose (three-letter code: NAG) (formula:  $C_8H_{15}NO_6$ ).



Mol	Chain	Residues	Atoms				ZeroOcc	AltConf
3	A	1	Total	C	N	O	0	0
			14	8	1	5		
3	A	1	Total	C	N	O	0	0
			14	8	1	5		

*Continued on next page...*

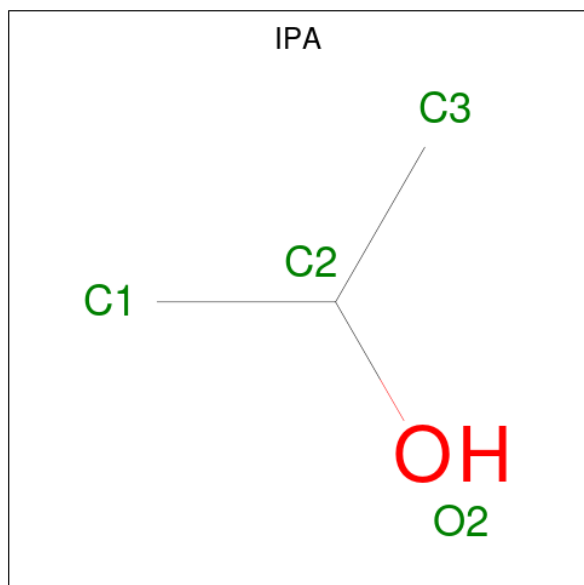
Continued from previous page...

Mol	Chain	Residues	Atoms				ZeroOcc	AltConf
3	A	1	Total	C	N	O	0	0
			14	8	1	5		
3	A	1	Total	C	N	O	0	0
			14	8	1	5		
3	A	1	Total	C	N	O	0	0
			14	8	1	5		
3	A	1	Total	C	N	O	0	0
			14	8	1	5		
3	A	1	Total	C	N	O	0	1
			28	16	2	10		
3	A	1	Total	C	N	O	0	0
			14	8	1	5		

- Molecule 4 is SODIUM ION (three-letter code: NA) (formula: Na).

Mol	Chain	Residues	Atoms		ZeroOcc	AltConf
4	A	6	Total	Na	0	0
			6	6		

- Molecule 5 is ISOPROPYL ALCOHOL (three-letter code: IPA) (formula: C<sub>3</sub>H<sub>8</sub>O).



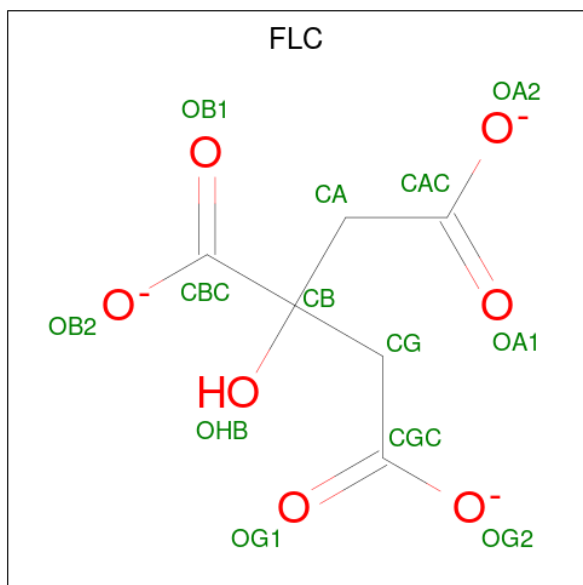
Mol	Chain	Residues	Atoms			ZeroOcc	AltConf
5	A	1	Total	C	O	0	0
			4	3	1		
5	A	1	Total	C	O	0	0
			4	3	1		

Continued on next page...

Continued from previous page...

Mol	Chain	Residues	Atoms			ZeroOcc	AltConf
5	A	1	Total	C	O	0	0
			4	3	1		
5	A	1	Total	C	O	0	0
			4	3	1		
5	A	1	Total	C	O	0	0
			4	3	1		

- Molecule 6 is CITRATE ANION (three-letter code: FLC) (formula:  $C_6H_5O_7$ ).



Mol	Chain	Residues	Atoms			ZeroOcc	AltConf
6	A	1	Total	C	O	0	0
			13	6	7		

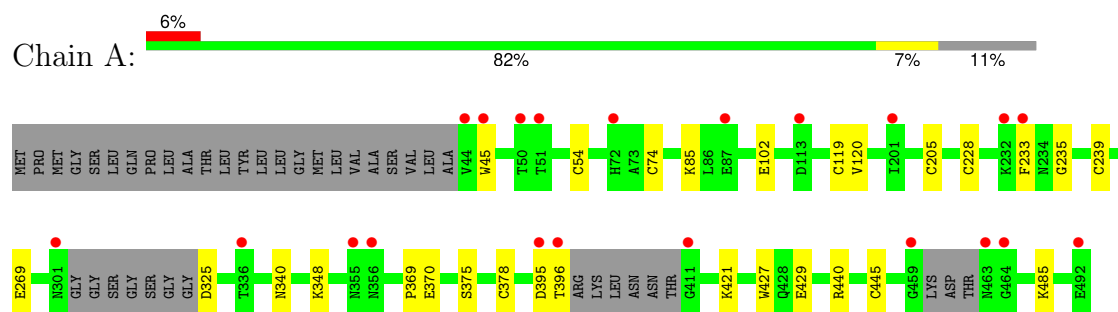
- Molecule 7 is water.

Mol	Chain	Residues	Atoms		ZeroOcc	AltConf
7	A	360	Total	O	0	0
			360	360		
7	R	17	Total	O	0	0
			17	17		

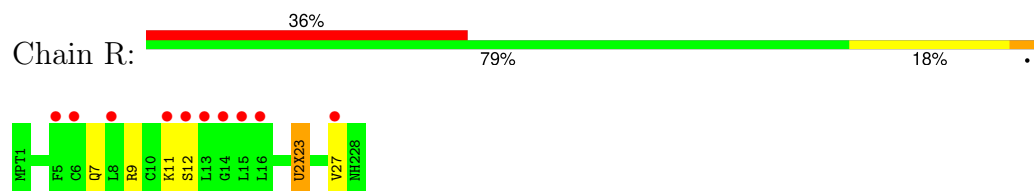
### 3 Residue-property plots [i](#)

These plots are drawn for all protein, RNA, DNA and oligosaccharide chains in the entry. The first graphic for a chain summarises the proportions of the various outlier classes displayed in the second graphic. The second graphic shows the sequence view annotated by issues in geometry and electron density. Residues are color-coded according to the number of geometric quality criteria for which they contain at least one outlier: green = 0, yellow = 1, orange = 2 and red = 3 or more. A red dot above a residue indicates a poor fit to the electron density ( $RSRZ > 2$ ). Stretches of 2 or more consecutive residues without any outlier are shown as a green connector. Residues present in the sample, but not in the model, are shown in grey.

- Molecule 1: HIV-1 YU2 gp120 glycoprotein



- Molecule 2: CD4-MIMETIC MINIPROTEIN M48U1



## 4 Data and refinement statistics

Property	Value	Source
Space group	C 2 2 21	Depositor
Cell constants a, b, c, $\alpha$ , $\beta$ , $\gamma$	65.09Å 164.72Å 78.03Å 90.00° 90.00° 90.00°	Depositor
Resolution (Å)	35.26 – 1.49 35.26 – 1.49	Depositor EDS
% Data completeness (in resolution range)	99.1 (35.26-1.49) 94.8 (35.26-1.49)	Depositor EDS
$R_{merge}$	(Not available)	Depositor
$R_{sym}$	0.12	Depositor
$\langle I/\sigma(I) \rangle$ <sup>1</sup>	2.13 (at 1.49Å)	Xtriage
Refinement program	PHENIX (phenix.refine: 1.8.2_1309)	Depositor
R, $R_{free}$	0.167 , 0.189 0.178 , 0.198	Depositor DCC
$R_{free}$ test set	3452 reflections (5.07%)	wwPDB-VP
Wilson B-factor (Å <sup>2</sup> )	20.6	Xtriage
Anisotropy	0.277	Xtriage
Bulk solvent $k_{sol}$ (e/Å <sup>3</sup> ), $B_{sol}$ (Å <sup>2</sup> )	0.37 , 44.4	EDS
L-test for twinning <sup>2</sup>	$\langle  L  \rangle = 0.49$ , $\langle L^2 \rangle = 0.32$	Xtriage
Estimated twinning fraction	No twinning to report.	Xtriage
$F_o, F_c$ correlation	0.97	EDS
Total number of atoms	3518	wwPDB-VP
Average B, all atoms (Å <sup>2</sup> )	30.0	wwPDB-VP

Xtriage's analysis on translational NCS is as follows: *The largest off-origin peak in the Patterson function is 6.78% of the height of the origin peak. No significant pseudotranslation is detected.*

<sup>1</sup>Intensities estimated from amplitudes.

<sup>2</sup>Theoretical values of  $\langle |L| \rangle$ ,  $\langle L^2 \rangle$  for acentric reflections are 0.5, 0.333 respectively for untwinned datasets, and 0.375, 0.2 for perfectly twinned datasets.

## 5 Model quality

### 5.1 Standard geometry

Bond lengths and bond angles in the following residue types are not validated in this section: DPR, NAG, NA, NH2, MPT, FLC, U2X, IPA

The Z score for a bond length (or angle) is the number of standard deviations the observed value is removed from the expected value. A bond length (or angle) with  $|Z| > 5$  is considered an outlier worth inspection. RMSZ is the root-mean-square of all Z scores of the bond lengths (or angles).

Mol	Chain	Bond lengths		Bond angles	
		RMSZ	$\# Z  > 5$	RMSZ	$\# Z  > 5$
1	A	0.33	0/2885	0.52	0/3909
2	R	0.31	0/201	0.57	0/264
All	All	0.32	0/3086	0.52	0/4173

There are no bond length outliers.

There are no bond angle outliers.

There are no chirality outliers.

There are no planarity outliers.

### 5.2 Too-close contacts

In the following table, the Non-H and H(model) columns list the number of non-hydrogen atoms and hydrogen atoms in the chain respectively. The H(added) column lists the number of hydrogen atoms added and optimized by MolProbity. The Clashes column lists the number of clashes within the asymmetric unit, whereas Symm-Clashes lists symmetry-related clashes.

Mol	Chain	Non-H	H(model)	H(added)	Clashes	Symm-Clashes
1	A	2734	0	2722	22	0
2	R	242	0	256	9	0
3	A	126	0	117	4	0
4	A	6	0	0	0	0
5	A	20	0	40	3	0
6	A	13	0	5	2	0
7	A	360	0	0	11	0
7	R	17	0	0	3	0
All	All	3518	0	3140	34	0

The all-atom clashscore is defined as the number of clashes found per 1000 atoms (including hydrogen atoms). The all-atom clashscore for this structure is 5.



All (34) close contacts within the same asymmetric unit are listed below, sorted by their clash magnitude.

Atom-1	Atom-2	Interatomic distance (Å)	Clash overlap (Å)
1:A:102:GLU:OE1	7:A:916:HOH:O	1.85	0.95
1:A:85:LYS:NZ	7:A:915:HOH:O	2.14	0.79
2:R:7:GLN:OE1	7:R:109:HOH:O	2.05	0.75
2:R:11[B]:LYS:NZ	7:R:113:HOH:O	2.12	0.74
2:R:27:VAL:O	7:R:116:HOH:O	2.06	0.73
6:A:520:FLC:HA2	7:A:850:HOH:O	1.89	0.72
1:A:119[B]:CYS:HB3	1:A:205:CYS:SG	2.29	0.72
1:A:429:GLU:OE1	7:A:910:HOH:O	2.09	0.71
1:A:375[B]:SER:OG	2:R:23[B]:U2X:H51	1.99	0.62
7:A:788:HOH:O	2:R:23[B]:U2X:H21	1.98	0.62
1:A:45:TRP:H	5:A:513:IPA:H31	1.64	0.62
5:A:519:IPA:O2	7:A:952:HOH:O	1.95	0.61
1:A:370:GLU:HG2	2:R:23[B]:U2X:H71	1.84	0.58
1:A:54[B]:CYS:HB2	1:A:74:CYS:SG	2.43	0.57
1:A:395:ASP:OD1	1:A:396:THR:N	2.40	0.54
3:A:503:NAG:H83	3:A:503:NAG:H3	1.89	0.53
1:A:369:PRO:HB3	5:A:519:IPA:H32	1.92	0.51
3:A:503:NAG:C1	3:A:503:NAG:H82	2.41	0.51
1:A:325:ASP:OD1	7:A:919:HOH:O	2.19	0.50
7:A:788:HOH:O	2:R:23[B]:U2X:H72	2.12	0.49
1:A:119[B]:CYS:SG	1:A:120:VAL:HG23	2.53	0.49
1:A:421:LYS:HG2	6:A:520:FLC:HG2	1.95	0.48
1:A:378:CYS:SG	1:A:445[B]:CYS:HB3	2.53	0.48
1:A:233:PHE:CE2	1:A:235:GLY:HA2	2.50	0.47
1:A:233:PHE:CE1	1:A:239[B]:CYS:SG	3.08	0.46
1:A:228[B]:CYS:SG	1:A:485:LYS:HA	2.56	0.46
2:R:9:ARG:O	2:R:12:SER:OG	2.27	0.44
1:A:440:ARG:NH1	7:A:883:HOH:O	2.30	0.43
3:A:503:NAG:C1	3:A:503:NAG:C8	2.97	0.42
1:A:269:GLU:OE1	1:A:348[A]:LYS:NZ	2.52	0.42
1:A:340[A]:ASN:ND2	7:A:926:HOH:O	2.53	0.42
3:A:502:NAG:H81	7:A:672:HOH:O	2.20	0.41
1:A:228[B]:CYS:HB2	1:A:239[B]:CYS:SG	2.60	0.40
1:A:427:TRP:HB3	2:R:23[B]:U2X:OH	2.20	0.40

There are no symmetry-related clashes.

## 5.3 Torsion angles

### 5.3.1 Protein backbone

In the following table, the Percentiles column shows the percent Ramachandran outliers of the chain as a percentile score with respect to all X-ray entries followed by that with respect to entries of similar resolution.

The Analysed column shows the number of residues for which the backbone conformation was analysed, and the total number of residues.

Mol	Chain	Analysed	Favoured	Allowed	Outliers	Percentiles	
1	A	356/376 (95%)	349 (98%)	7 (2%)	0	100	100
2	R	27/28 (96%)	27 (100%)	0	0	100	100
All	All	383/404 (95%)	376 (98%)	7 (2%)	0	100	100

There are no Ramachandran outliers to report.

### 5.3.2 Protein sidechains

In the following table, the Percentiles column shows the percent sidechain outliers of the chain as a percentile score with respect to all X-ray entries followed by that with respect to entries of similar resolution.

The Analysed column shows the number of residues for which the sidechain conformation was analysed, and the total number of residues.

Mol	Chain	Analysed	Rotameric	Outliers	Percentiles	
1	A	324/328 (99%)	324 (100%)	0	100	100
2	R	23/20 (115%)	23 (100%)	0	100	100
All	All	347/348 (100%)	347 (100%)	0	100	100

There are no protein residues with a non-rotameric sidechain to report.

Sometimes sidechains can be flipped to improve hydrogen bonding and reduce clashes. There are no such sidechains identified.

### 5.3.3 RNA

There are no RNA molecules in this entry.

## 5.4 Non-standard residues in protein, DNA, RNA chains ⓘ

3 non-standard protein/DNA/RNA residues are modelled in this entry.

In the following table, the Counts columns list the number of bonds (or angles) for which Mogul statistics could be retrieved, the number of bonds (or angles) that are observed in the model and the number of bonds (or angles) that are defined in the Chemical Component Dictionary. The Link column lists molecule types, if any, to which the group is linked. The Z score for a bond length (or angle) is the number of standard deviations the observed value is removed from the expected value. A bond length (or angle) with  $|Z| > 2$  is considered an outlier worth inspection. RMSZ is the root-mean-square of all Z scores of the bond lengths (or angles).

Mol	Type	Chain	Res	Link	Bond lengths			Bond angles		
					Counts	RMSZ	# $ Z  > 2$	Counts	RMSZ	# $ Z  > 2$
2	U2X	R	23[B]	-	19,20,21	2.47	5 (26%)	20,25,27	1.61	5 (25%)
2	U2X	R	23[A]	-	19,20,21	2.53	4 (21%)	20,25,27	1.42	5 (25%)

In the following table, the Chirals column lists the number of chiral outliers, the number of chiral centers analysed, the number of these observed in the model and the number defined in the Chemical Component Dictionary. Similar counts are reported in the Torsion and Rings columns. '-' means no outliers of that kind were identified.

Mol	Type	Chain	Res	Link	Chirals	Torsions	Rings
2	U2X	R	23[B]	-	-	5/10/19/21	0/2/2/2
2	U2X	R	23[A]	-	-	2/10/19/21	0/2/2/2

All (9) bond length outliers are listed below:

Mol	Chain	Res	Type	Atoms	Z	Observed(Å)	Ideal(Å)
2	R	23[B]	U2X	CE2-CD2	7.99	1.51	1.38
2	R	23[A]	U2X	CE2-CD2	7.95	1.51	1.38
2	R	23[A]	U2X	CE1-CD1	5.11	1.47	1.38
2	R	23[B]	U2X	CE1-CD1	4.65	1.46	1.38
2	R	23[A]	U2X	CE1-CZ	2.86	1.44	1.38
2	R	23[B]	U2X	CE1-CZ	2.71	1.43	1.38
2	R	23[A]	U2X	C4-C3	2.43	1.59	1.52
2	R	23[B]	U2X	C4-C3	2.17	1.58	1.52
2	R	23[B]	U2X	CB-CA	-2.15	1.49	1.53

All (10) bond angle outliers are listed below:

Mol	Chain	Res	Type	Atoms	Z	Observed(°)	Ideal(°)
2	R	23[B]	U2X	C2-C3-C7	3.84	121.65	111.42
2	R	23[A]	U2X	C1-C2-C3	-2.98	105.82	112.08

*Continued on next page...*

*Continued from previous page...*

Mol	Chain	Res	Type	Atoms	Z	Observed(°)	Ideal(°)
2	R	23[A]	U2X	C2-C3-C7	2.87	119.09	111.42
2	R	23[B]	U2X	C4-C3-C7	2.60	118.36	111.42
2	R	23[B]	U2X	C1-C2-C3	-2.43	106.97	112.08
2	R	23[B]	U2X	CD2-CG-CD1	2.28	121.62	118.23
2	R	23[A]	U2X	C6-C1-C2	-2.06	107.18	111.42
2	R	23[A]	U2X	C4-C3-C7	2.05	116.90	111.42
2	R	23[B]	U2X	C5-C4-C3	-2.03	107.82	112.08
2	R	23[A]	U2X	CD2-CG-CD1	2.01	121.22	118.23

There are no chirality outliers.

All (7) torsion outliers are listed below:

Mol	Chain	Res	Type	Atoms
2	R	23[B]	U2X	C2-C3-C7-OH
2	R	23[A]	U2X	CE1-CZ-OH-C7
2	R	23[A]	U2X	CE2-CZ-OH-C7
2	R	23[B]	U2X	C3-C7-OH-CZ
2	R	23[B]	U2X	CE2-CZ-OH-C7
2	R	23[B]	U2X	CE1-CZ-OH-C7
2	R	23[B]	U2X	C4-C3-C7-OH

There are no ring outliers.

1 monomer is involved in 5 short contacts:

Mol	Chain	Res	Type	Clashes	Symm-Clashes
2	R	23[B]	U2X	5	0

## 5.5 Carbohydrates [i](#)

There are no oligosaccharides in this entry.

## 5.6 Ligand geometry [i](#)

Of 21 ligands modelled in this entry, 6 are monoatomic - leaving 15 for Mogul analysis.

In the following table, the Counts columns list the number of bonds (or angles) for which Mogul statistics could be retrieved, the number of bonds (or angles) that are observed in the model and the number of bonds (or angles) that are defined in the Chemical Component Dictionary. The Link column lists molecule types, if any, to which the group is linked. The Z score for a bond length (or angle) is the number of standard deviations the observed value is removed from the

expected value. A bond length (or angle) with  $|Z| > 2$  is considered an outlier worth inspection. RMSZ is the root-mean-square of all Z scores of the bond lengths (or angles).

Mol	Type	Chain	Res	Link	Bond lengths			Bond angles		
					Counts	RMSZ	$\# Z  > 2$	Counts	RMSZ	$\# Z  > 2$
3	NAG	A	507[A]	1	14,14,15	0.22	0	17,19,21	0.46	0
3	NAG	A	502	1	14,14,15	0.40	0	17,19,21	0.46	0
3	NAG	A	504	4,1	14,14,15	0.29	0	17,19,21	0.71	0
3	NAG	A	508	1	14,14,15	0.29	0	17,19,21	0.44	0
5	IPA	A	512	-	3,3,3	0.57	0	3,3,3	0.18	0
3	NAG	A	505	1	14,14,15	0.30	0	17,19,21	0.45	0
3	NAG	A	503	1	14,14,15	0.23	0	17,19,21	1.00	1 (5%)
3	NAG	A	507[B]	1	14,14,15	0.40	0	17,19,21	0.52	0
5	IPA	A	511	-	3,3,3	0.59	0	3,3,3	0.23	0
5	IPA	A	513	-	3,3,3	0.54	0	3,3,3	0.15	0
3	NAG	A	501	1	14,14,15	0.38	0	17,19,21	0.70	0
6	FLC	A	520	-	12,12,12	1.16	0	17,17,17	1.14	1 (5%)
5	IPA	A	519	-	3,3,3	0.53	0	3,3,3	0.33	0
3	NAG	A	506	1	14,14,15	0.34	0	17,19,21	0.43	0
5	IPA	A	510	-	3,3,3	0.51	0	3,3,3	0.15	0

In the following table, the Chirals column lists the number of chiral outliers, the number of chiral centers analysed, the number of these observed in the model and the number defined in the Chemical Component Dictionary. Similar counts are reported in the Torsion and Rings columns. '-' means no outliers of that kind were identified.

Mol	Type	Chain	Res	Link	Chirals	Torsions	Rings
3	NAG	A	507[A]	1	-	0/6/23/26	0/1/1/1
3	NAG	A	502	1	-	4/6/23/26	0/1/1/1
3	NAG	A	504	4,1	-	0/6/23/26	0/1/1/1
3	NAG	A	508	1	-	1/6/23/26	0/1/1/1
3	NAG	A	505	1	-	0/6/23/26	0/1/1/1
3	NAG	A	503	1	-	4/6/23/26	0/1/1/1
3	NAG	A	507[B]	1	-	2/6/23/26	0/1/1/1
6	FLC	A	520	-	-	11/16/16/16	-
3	NAG	A	501	1	-	2/6/23/26	0/1/1/1
3	NAG	A	506	1	-	0/6/23/26	0/1/1/1

There are no bond length outliers.

All (2) bond angle outliers are listed below:

Mol	Chain	Res	Type	Atoms	Z	Observed(°)	Ideal(°)
3	A	503	NAG	C2-N2-C7	2.83	126.69	122.90
6	A	520	FLC	OB2-CBC-CB	2.45	117.84	113.14

There are no chirality outliers.

All (24) torsion outliers are listed below:

Mol	Chain	Res	Type	Atoms
3	A	503	NAG	C1-C2-N2-C7
6	A	520	FLC	CA-CB-CBC-OB1
6	A	520	FLC	CA-CB-CBC-OB2
6	A	520	FLC	OHB-CB-CBC-OB1
6	A	520	FLC	OHB-CB-CBC-OB2
3	A	502	NAG	O5-C5-C6-O6
3	A	502	NAG	C4-C5-C6-O6
3	A	501	NAG	C8-C7-N2-C2
3	A	501	NAG	O7-C7-N2-C2
3	A	502	NAG	C8-C7-N2-C2
3	A	502	NAG	O7-C7-N2-C2
3	A	503	NAG	C8-C7-N2-C2
3	A	503	NAG	O7-C7-N2-C2
3	A	507[B]	NAG	C8-C7-N2-C2
3	A	507[B]	NAG	O7-C7-N2-C2
6	A	520	FLC	CAC-CA-CB-CBC
6	A	520	FLC	CAC-CA-CB-OHB
3	A	508	NAG	O5-C5-C6-O6
6	A	520	FLC	CAC-CA-CB-CG
6	A	520	FLC	CG-CB-CBC-OB2
6	A	520	FLC	CG-CB-CBC-OB1
3	A	503	NAG	C3-C2-N2-C7
6	A	520	FLC	CB-CA-CAC-OA1
6	A	520	FLC	CB-CA-CAC-OA2

There are no ring outliers.

5 monomers are involved in 9 short contacts:

Mol	Chain	Res	Type	Clashes	Symm-Clashes
3	A	502	NAG	1	0
3	A	503	NAG	3	0
5	A	513	IPA	1	0
6	A	520	FLC	2	0
5	A	519	IPA	2	0

## 5.7 Other polymers [i](#)

There are no such residues in this entry.

## 5.8 Polymer linkage issues [i](#)

There are no chain breaks in this entry.

## 6 Fit of model and data

### 6.1 Protein, DNA and RNA chains

In the following table, the column labelled ‘#RSRZ > 2’ contains the number (and percentage) of RSRZ outliers, followed by percent RSRZ outliers for the chain as percentile scores relative to all X-ray entries and entries of similar resolution. The OWAB column contains the minimum, median, 95<sup>th</sup> percentile and maximum values of the occupancy-weighted average B-factor per residue. The column labelled ‘Q < 0.9’ lists the number of (and percentage) of residues with an average occupancy less than 0.9.

Mol	Chain	Analysed	<RSRZ>	#RSRZ>2	OWAB(Å <sup>2</sup> )	Q<0.9
1	A	336/376 (89%)	0.33	21 (6%) 27 28	8, 24, 49, 66	25 (7%)
2	R	24/28 (85%)	1.93	10 (41%) 1 0	21, 42, 60, 64	3 (12%)
All	All	360/404 (89%)	0.44	31 (8%) 18 17	8, 25, 52, 66	28 (7%)

All (31) RSRZ outliers are listed below:

Mol	Chain	Res	Type	RSRZ
2	R	5	PHE	5.5
2	R	11[A]	LYS	5.2
2	R	8	LEU	4.9
1	A	44	VAL	4.1
1	A	301	ASN	4.0
1	A	411	GLY	3.8
1	A	355	ASN	3.6
1	A	45	TRP	3.3
1	A	232	LYS	3.2
2	R	13	LEU	3.2
1	A	395	ASP	3.0
1	A	463	ASN	2.8
2	R	12	SER	2.8
1	A	459	GLY	2.7
2	R	16[A]	LEU	2.6
1	A	201	ILE	2.6
1	A	51	THR	2.6
1	A	87	GLU	2.5
1	A	396	THR	2.5
1	A	464	GLY	2.4
1	A	233	PHE	2.3
2	R	15	LEU	2.3
1	A	356	ASN	2.2
1	A	50	THR	2.2

*Continued on next page...*



*Continued from previous page...*

Mol	Chain	Res	Type	RSRZ
2	R	14	GLY	2.2
1	A	492	GLU	2.2
1	A	113	ASP	2.1
2	R	6	CYS	2.1
1	A	72	HIS	2.1
1	A	336	THR	2.0
2	R	27	VAL	2.0

## 6.2 Non-standard residues in protein, DNA, RNA chains [i](#)

In the following table, the Atoms column lists the number of modelled atoms in the group and the number defined in the chemical component dictionary. The B-factors column lists the minimum, median, 95<sup>th</sup> percentile and maximum values of B factors of atoms in the group. The column labelled 'Q< 0.9' lists the number of atoms with occupancy less than 0.9.

Mol	Type	Chain	Res	Atoms	RSCC	RSR	B-factors(Å <sup>2</sup> )	Q<0.9
2	U2X	R	23[A]	19/20	0.95	0.08	13,19,24,24	16
2	U2X	R	23[B]	19/20	0.95	0.08	15,20,28,40	16
2	DPR	R	21	7/8	0.98	0.07	19,19,24,25	0

## 6.3 Carbohydrates [i](#)

There are no monosaccharides in this entry.

## 6.4 Ligands [i](#)

In the following table, the Atoms column lists the number of modelled atoms in the group and the number defined in the chemical component dictionary. The B-factors column lists the minimum, median, 95<sup>th</sup> percentile and maximum values of B factors of atoms in the group. The column labelled 'Q< 0.9' lists the number of atoms with occupancy less than 0.9.

Mol	Type	Chain	Res	Atoms	RSCC	RSR	B-factors(Å <sup>2</sup> )	Q<0.9
5	IPA	A	519	4/4	0.61	0.22	52,54,58,59	0
3	NAG	A	503	14/15	0.64	0.14	49,56,64,66	0
5	IPA	A	512	4/4	0.66	0.24	44,52,57,61	0
3	NAG	A	508	14/15	0.73	0.15	32,40,59,61	0
5	IPA	A	513	4/4	0.74	0.23	43,50,55,63	0
6	FLC	A	520	13/13	0.75	0.19	32,63,74,80	0
3	NAG	A	507[A]	14/15	0.79	0.14	34,41,46,47	14
4	NA	A	518	1/1	0.79	0.19	52,52,52,52	0

*Continued on next page...*

*Continued from previous page...*

Mol	Type	Chain	Res	Atoms	RSCC	RSR	B-factors( $\text{\AA}^2$ )	Q<0.9
3	NAG	A	507[B]	14/15	0.79	0.14	33,42,49,51	14
3	NAG	A	502	14/15	0.81	0.14	40,46,58,64	0
5	IPA	A	511	4/4	0.85	0.14	27,38,38,53	0
3	NAG	A	505	14/15	0.87	0.10	32,39,51,55	0
3	NAG	A	506	14/15	0.88	0.11	38,42,51,55	0
5	IPA	A	510	4/4	0.89	0.12	33,36,41,42	0
4	NA	A	515	1/1	0.92	0.11	43,43,43,43	0
3	NAG	A	501	14/15	0.92	0.10	25,27,46,48	0
3	NAG	A	504	14/15	0.96	0.06	18,22,31,35	0
4	NA	A	517	1/1	0.99	0.05	26,26,26,26	0
4	NA	A	514	1/1	0.99	0.05	24,24,24,24	0
4	NA	A	509	1/1	0.99	0.08	28,28,28,28	0
4	NA	A	516	1/1	0.99	0.06	23,23,23,23	0

## 6.5 Other polymers [i](#)

There are no such residues in this entry.