



# wwPDB X-ray Structure Validation Summary Report ⓘ

Jun 16, 2024 – 06:52 PM EDT

PDB ID : 5JWQ  
Title : Crystal structure of KaiC S431E in complex with foldswitch-stabilized KaiB from *Thermosynechococcus elongatus*  
Authors : Tseng, R.; Goularte, N.F.; Chavan, A.; Luu, J.; Chang, Y.; Heilser, J.; Tripathi, S.; LiWang, A.; Partch, C.L.  
Deposited on : 2016-05-12  
Resolution : 3.87 Å(reported)

This is a wwPDB X-ray Structure Validation Summary Report for a publicly released PDB entry.

We welcome your comments at [validation@mail.wwpdb.org](mailto:validation@mail.wwpdb.org)

A user guide is available at

<https://www.wwpdb.org/validation/2017/XrayValidationReportHelp>

with specific help available everywhere you see the ⓘ symbol.

The types of validation reports are described at

<http://www.wwpdb.org/validation/2017/FAQs#types>.

---

The following versions of software and data (see [references ⓘ](#)) were used in the production of this report:

MolProbity	:	4.02b-467
Mogul	:	1.8.5 (274361), CSD as541be (2020)
Xtriage (Phenix)	:	1.13
EDS	:	2.37.1
buster-report	:	1.1.7 (2018)
Percentile statistics	:	20191225.v01 (using entries in the PDB archive December 25th 2019)
Refmac	:	5.8.0158
CCP4	:	7.0.044 (Gargrove)
Ideal geometry (proteins)	:	Engh & Huber (2001)
Ideal geometry (DNA, RNA)	:	Parkinson et al. (1996)
Validation Pipeline (wwPDB-VP)	:	2.37.1

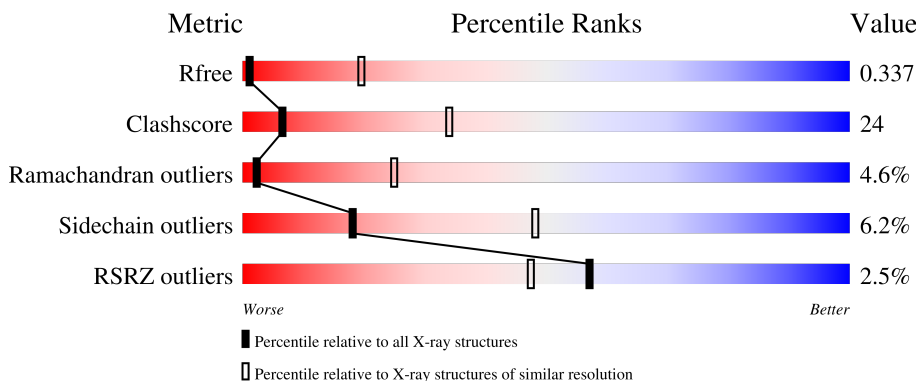
# 1 Overall quality at a glance

The following experimental techniques were used to determine the structure:

*X-RAY DIFFRACTION*

The reported resolution of this entry is 3.87 Å.

Percentile scores (ranging between 0-100) for global validation metrics of the entry are shown in the following graphic. The table shows the number of entries on which the scores are based.



Metric	Whole archive (#Entries)	Similar resolution (#Entries, resolution range(Å))
$R_{free}$	130704	1026 (4.12-3.64)
Clashscore	141614	1045 (4.10-3.66)
Ramachandran outliers	138981	1008 (4.10-3.66)
Sidechain outliers	138945	1001 (4.10-3.66)
RSRZ outliers	127900	1213 (4.16-3.60)

The table below summarises the geometric issues observed across the polymeric chains and their fit to the electron density. The red, orange, yellow and green segments of the lower bar indicate the fraction of residues that contain outliers for  $\geq 3$ , 2, 1 and 0 types of geometric quality criteria respectively. A grey segment represents the fraction of residues that are not modelled. The numeric value for each fraction is indicated below the corresponding segment, with a dot representing fractions  $\leq 5\%$ . The upper red bar (where present) indicates the fraction of residues that have poor fit to the electron density. The numeric value is given above the bar.

Mol	Chain	Length	Quality of chain
1	A	526	
1	C	526	
2	B	99	
2	D	99	

## 2 Entry composition

There are 3 unique types of molecules in this entry. The entry contains 7357 atoms, of which 0 are hydrogens and 0 are deuteriums.

In the tables below, the ZeroOcc column contains the number of atoms modelled with zero occupancy, the AltConf column contains the number of residues with at least one atom in alternate conformation and the Trace column contains the number of residues modelled with at most 2 atoms.

- Molecule 1 is a protein called Circadian clock protein kinase KaiC.

Mol	Chain	Residues	Atoms					ZeroOcc	AltConf	Trace
1	A	413	Total	C	N	O	S	0	0	0
			3012	1890	518	595	9			
1	C	408	Total	C	N	O	S	0	0	0
			3031	1906	520	596	9			

There are 18 discrepancies between the modelled and reference sequences:

Chain	Residue	Modelled	Actual	Comment	Reference
A	-7	ASP	-	expression tag	UNP Q79V60
A	-6	TYR	-	expression tag	UNP Q79V60
A	-5	LYS	-	expression tag	UNP Q79V60
A	-4	ASP	-	expression tag	UNP Q79V60
A	-3	ASP	-	expression tag	UNP Q79V60
A	-2	ASP	-	expression tag	UNP Q79V60
A	-1	ASP	-	expression tag	UNP Q79V60
A	0	LYS	-	expression tag	UNP Q79V60
A	431	GLU	SER	engineered mutation	UNP Q79V60
C	-7	ASP	-	expression tag	UNP Q79V60
C	-6	TYR	-	expression tag	UNP Q79V60
C	-5	LYS	-	expression tag	UNP Q79V60
C	-4	ASP	-	expression tag	UNP Q79V60
C	-3	ASP	-	expression tag	UNP Q79V60
C	-2	ASP	-	expression tag	UNP Q79V60
C	-1	ASP	-	expression tag	UNP Q79V60
C	0	LYS	-	expression tag	UNP Q79V60
C	431	GLU	SER	engineered mutation	UNP Q79V60

- Molecule 2 is a protein called Circadian clock protein KaiB.

Mol	Chain	Residues	Atoms				ZeroOcc	AltConf	Trace
2	B	88	Total	C	N	O	0	0	0
			590	377	99	114			

*Continued on next page...*

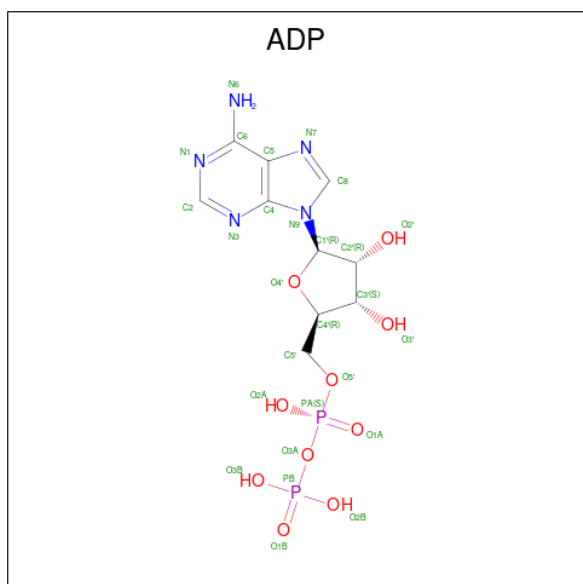
Continued from previous page...

Mol	Chain	Residues	Atoms				ZeroOcc	AltConf	Trace
2	D	89	Total	C	N	O	0	0	0
			670	433	115	122			

There are 6 discrepancies between the modelled and reference sequences:

Chain	Residue	Modelled	Actual	Comment	Reference
B	8	ALA	TYR	engineered mutation	UNP Q79V61
B	88	ALA	ILE	engineered mutation	UNP Q79V61
B	94	ALA	TYR	engineered mutation	UNP Q79V61
D	8	ALA	TYR	engineered mutation	UNP Q79V61
D	88	ALA	ILE	engineered mutation	UNP Q79V61
D	94	ALA	TYR	engineered mutation	UNP Q79V61

- Molecule 3 is ADENOSINE-5'-DIPHOSPHATE (three-letter code: ADP) (formula:  $C_{10}H_{15}N_5O_{10}P_2$ ).



Mol	Chain	Residues	Atoms					ZeroOcc	AltConf
3	A	1	Total	C	N	O	P	0	0
			27	10	5	10	2		
3	C	1	Total	C	N	O	P	0	0
			27	10	5	10	2		





## 4 Data and refinement statistics

Property	Value	Source
Space group	P 21 3	Depositor
Cell constants a, b, c, $\alpha$ , $\beta$ , $\gamma$	155.92Å 155.92Å 155.92Å 90.00° 90.00° 90.00°	Depositor
Resolution (Å)	90.02 – 3.87 90.02 – 3.87	Depositor EDS
% Data completeness (in resolution range)	99.5 (90.02-3.87) 99.5 (90.02-3.87)	Depositor EDS
$R_{merge}$	0.27	Depositor
$R_{sym}$	(Not available)	Depositor
$\langle I/\sigma(I) \rangle$ <sup>1</sup>	2.44 (at 3.89Å)	Xtriage
Refinement program	PHENIX 1.9_1692	Depositor
R, $R_{free}$	0.327 , 0.345 0.334 , 0.337	Depositor DCC
$R_{free}$ test set	1179 reflections (9.83%)	wwPDB-VP
Wilson B-factor (Å <sup>2</sup> )	96.1	Xtriage
Anisotropy	0.000	Xtriage
Bulk solvent $k_{sol}$ (e/Å <sup>3</sup> ), $B_{sol}$ (Å <sup>2</sup> )	0.30 , 103.5	EDS
L-test for twinning <sup>2</sup>	$\langle  L  \rangle = 0.45$ , $\langle L^2 \rangle = 0.27$	Xtriage
Estimated twinning fraction	0.068 for l,-k,h	Xtriage
$F_o, F_c$ correlation	0.78	EDS
Total number of atoms	7357	wwPDB-VP
Average B, all atoms (Å <sup>2</sup> )	96.0	wwPDB-VP

Xtriage's analysis on translational NCS is as follows: *The largest off-origin peak in the Patterson function is 2.04% of the height of the origin peak. No significant pseudotranslation is detected.*

<sup>1</sup>Intensities estimated from amplitudes.

<sup>2</sup>Theoretical values of  $\langle |L| \rangle$ ,  $\langle L^2 \rangle$  for acentric reflections are 0.5, 0.333 respectively for untwinned datasets, and 0.375, 0.2 for perfectly twinned datasets.

## 5 Model quality [i](#)

### 5.1 Standard geometry [i](#)

Bond lengths and bond angles in the following residue types are not validated in this section: ADP

The Z score for a bond length (or angle) is the number of standard deviations the observed value is removed from the expected value. A bond length (or angle) with  $|Z| > 5$  is considered an outlier worth inspection. RMSZ is the root-mean-square of all Z scores of the bond lengths (or angles).

Mol	Chain	Bond lengths		Bond angles	
		RMSZ	$\# Z  > 5$	RMSZ	$\# Z  > 5$
1	A	0.32	0/3049	0.70	2/4133 (0.0%)
1	C	0.32	0/3071	0.70	3/4156 (0.1%)
2	B	0.27	0/596	0.64	0/823
2	D	0.34	0/678	0.85	4/924 (0.4%)
All	All	0.32	0/7394	0.71	9/10036 (0.1%)

Chiral center outliers are detected by calculating the chiral volume of a chiral center and verifying if the center is modelled as a planar moiety or with the opposite hand. A planarity outlier is detected by checking planarity of atoms in a peptide group, atoms in a mainchain group or atoms of a sidechain that are expected to be planar.

Mol	Chain	#Chirality outliers	#Planarity outliers
1	A	0	2
2	D	0	3
All	All	0	5

There are no bond length outliers.

The worst 5 of 9 bond angle outliers are listed below:

Mol	Chain	Res	Type	Atoms	Z	Observed( $^{\circ}$ )	Ideal( $^{\circ}$ )
2	D	92	LEU	CA-CB-CG	7.88	133.42	115.30
1	C	296	LEU	CA-CB-CG	6.91	131.20	115.30
2	D	90	LEU	CA-CB-CG	6.45	130.13	115.30
1	A	324	LEU	CA-CB-CG	5.99	129.08	115.30
1	A	61	LEU	CB-CG-CD1	-5.53	101.60	111.00

There are no chirality outliers.

All (5) planarity outliers are listed below:



Mol	Chain	Res	Type	Group
1	A	245	ASN	Peptide
1	A	405	GLN	Peptide
2	D	65	LEU	Peptide
2	D	74	ARG	Peptide
2	D	75	ARG	Peptide

## 5.2 Too-close contacts

In the following table, the Non-H and H(model) columns list the number of non-hydrogen atoms and hydrogen atoms in the chain respectively. The H(added) column lists the number of hydrogen atoms added and optimized by MolProbity. The Clashes column lists the number of clashes within the asymmetric unit, whereas Symm-Clashes lists symmetry-related clashes.

Mol	Chain	Non-H	H(model)	H(added)	Clashes	Symm-Clashes
1	A	3012	0	2863	158	0
1	C	3031	0	2919	147	0
2	B	590	0	564	24	0
2	D	670	0	716	41	0
3	A	27	0	12	1	0
3	C	27	0	12	3	0
All	All	7357	0	7086	342	0

The all-atom clashscore is defined as the number of clashes found per 1000 atoms (including hydrogen atoms). The all-atom clashscore for this structure is 24.

The worst 5 of 342 close contacts within the same asymmetric unit are listed below, sorted by their clash magnitude.

Atom-1	Atom-2	Interatomic distance (Å)	Clash overlap (Å)
2:D:68:VAL:HB	2:D:73:VAL:HA	1.45	0.95
1:A:99:ILE:HA	1:A:103:LYS:HB2	1.48	0.94
1:A:321:ARG:HA	1:A:324:LEU:HB2	1.56	0.87
2:D:67:LYS:HD2	2:D:68:VAL:H	1.40	0.87
1:C:143:VAL:HB	1:C:179:THR:HG22	1.58	0.86

There are no symmetry-related clashes.

## 5.3 Torsion angles ⓘ

### 5.3.1 Protein backbone ⓘ

In the following table, the Percentiles column shows the percent Ramachandran outliers of the chain as a percentile score with respect to all X-ray entries followed by that with respect to entries of similar resolution.

The Analysed column shows the number of residues for which the backbone conformation was analysed, and the total number of residues.

Mol	Chain	Analysed	Favoured	Allowed	Outliers	Percentiles	
1	A	401/526 (76%)	342 (85%)	39 (10%)	20 (5%)	2	24
1	C	394/526 (75%)	333 (84%)	40 (10%)	21 (5%)	2	23
2	B	86/99 (87%)	72 (84%)	12 (14%)	2 (2%)	6	38
2	D	87/99 (88%)	70 (80%)	15 (17%)	2 (2%)	6	38
All	All	968/1250 (77%)	817 (84%)	106 (11%)	45 (5%)	2	25

5 of 45 Ramachandran outliers are listed below:

Mol	Chain	Res	Type
1	A	103	LYS
1	A	191	PRO
1	A	194	ARG
1	A	201	VAL
1	A	270	LEU

### 5.3.2 Protein sidechains ⓘ

In the following table, the Percentiles column shows the percent sidechain outliers of the chain as a percentile score with respect to all X-ray entries followed by that with respect to entries of similar resolution.

The Analysed column shows the number of residues for which the sidechain conformation was analysed, and the total number of residues.

Mol	Chain	Analysed	Rotameric	Outliers	Percentiles	
1	A	301/449 (67%)	281 (93%)	20 (7%)	16	46
1	C	315/449 (70%)	296 (94%)	19 (6%)	19	49
2	B	54/84 (64%)	52 (96%)	2 (4%)	34	60
2	D	72/84 (86%)	67 (93%)	5 (7%)	15	45
All	All	742/1066 (70%)	696 (94%)	46 (6%)	18	48

5 of 46 residues with a non-rotameric sidechain are listed below:

Mol	Chain	Res	Type
1	C	212	LEU
1	C	287	THR
1	C	232	MET
1	C	260	ASN
1	C	334	ASP

Sometimes sidechains can be flipped to improve hydrogen bonding and reduce clashes. 5 of 7 such sidechains are listed below:

Mol	Chain	Res	Type
1	A	231	HIS
1	C	59	GLN
1	C	359	HIS
1	C	241	ASN
1	A	210	ASN

### 5.3.3 RNA [i](#)

There are no RNA molecules in this entry.

## 5.4 Non-standard residues in protein, DNA, RNA chains [i](#)

There are no non-standard protein/DNA/RNA residues in this entry.

## 5.5 Carbohydrates [i](#)

There are no monosaccharides in this entry.

## 5.6 Ligand geometry [i](#)

2 ligands are modelled in this entry.

In the following table, the Counts columns list the number of bonds (or angles) for which Mogul statistics could be retrieved, the number of bonds (or angles) that are observed in the model and the number of bonds (or angles) that are defined in the Chemical Component Dictionary. The Link column lists molecule types, if any, to which the group is linked. The Z score for a bond length (or angle) is the number of standard deviations the observed value is removed from the expected value. A bond length (or angle) with  $|Z| > 2$  is considered an outlier worth inspection. RMSZ is the root-mean-square of all Z scores of the bond lengths (or angles).

Mol	Type	Chain	Res	Link	Bond lengths			Bond angles		
					Counts	RMSZ	# Z  > 2	Counts	RMSZ	# Z  > 2
3	ADP	C	601	-	24,29,29	1.08	2 (8%)	29,45,45	1.62	5 (17%)
3	ADP	A	601	-	24,29,29	0.93	1 (4%)	29,45,45	1.53	6 (20%)

In the following table, the Chirals column lists the number of chiral outliers, the number of chiral centers analysed, the number of these observed in the model and the number defined in the Chemical Component Dictionary. Similar counts are reported in the Torsion and Rings columns. '-' means no outliers of that kind were identified.

Mol	Type	Chain	Res	Link	Chirals	Torsions	Rings
3	ADP	C	601	-	-	4/12/32/32	0/3/3/3
3	ADP	A	601	-	-	3/12/32/32	0/3/3/3

All (3) bond length outliers are listed below:

Mol	Chain	Res	Type	Atoms	Z	Observed(Å)	Ideal(Å)
3	C	601	ADP	C5-C4	2.54	1.47	1.40
3	C	601	ADP	O4'-C1'	2.43	1.44	1.41
3	A	601	ADP	C5-C4	2.35	1.47	1.40

The worst 5 of 11 bond angle outliers are listed below:

Mol	Chain	Res	Type	Atoms	Z	Observed(°)	Ideal(°)
3	C	601	ADP	PA-O3A-PB	-3.90	119.46	132.83
3	A	601	ADP	PA-O3A-PB	-3.73	120.02	132.83
3	A	601	ADP	N3-C2-N1	-3.63	123.00	128.68
3	C	601	ADP	C3'-C2'-C1'	3.51	106.26	100.98
3	C	601	ADP	N3-C2-N1	-3.16	123.74	128.68

There are no chirality outliers.

5 of 7 torsion outliers are listed below:

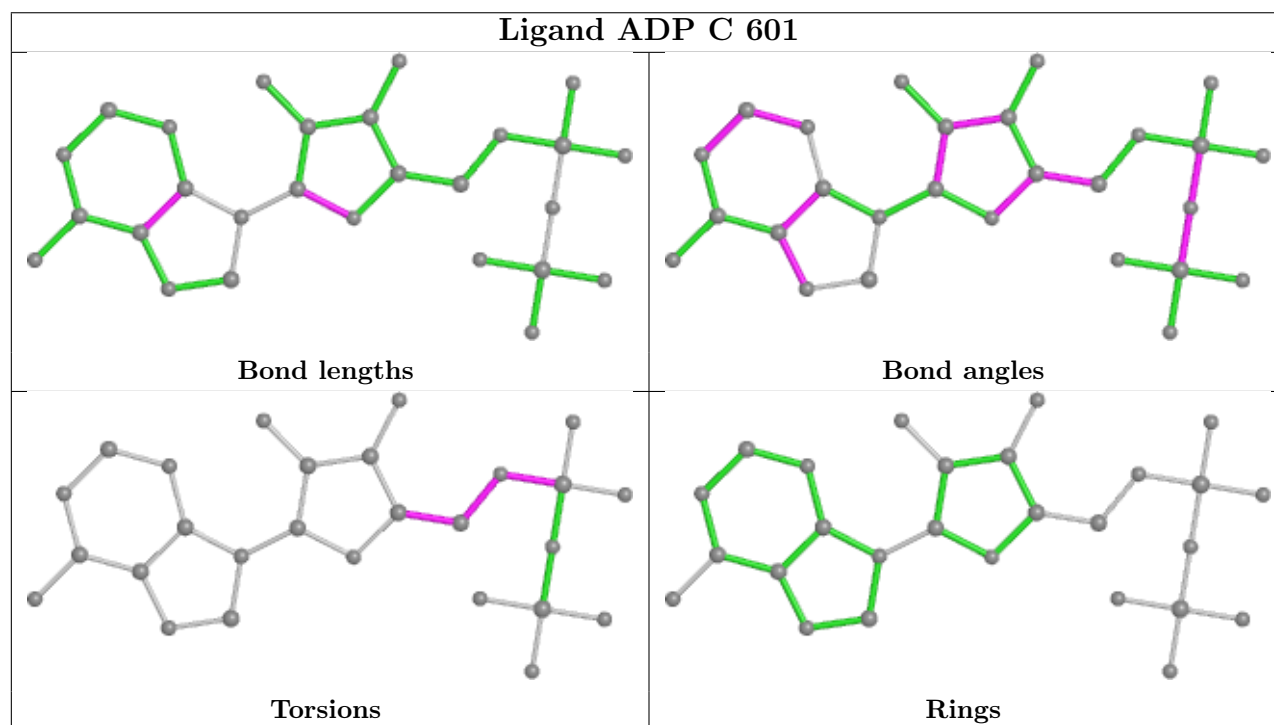
Mol	Chain	Res	Type	Atoms
3	A	601	ADP	O4'-C4'-C5'-O5'
3	A	601	ADP	C3'-C4'-C5'-O5'
3	C	601	ADP	C5'-O5'-PA-O3A
3	A	601	ADP	C4'-C5'-O5'-PA
3	C	601	ADP	C5'-O5'-PA-O2A

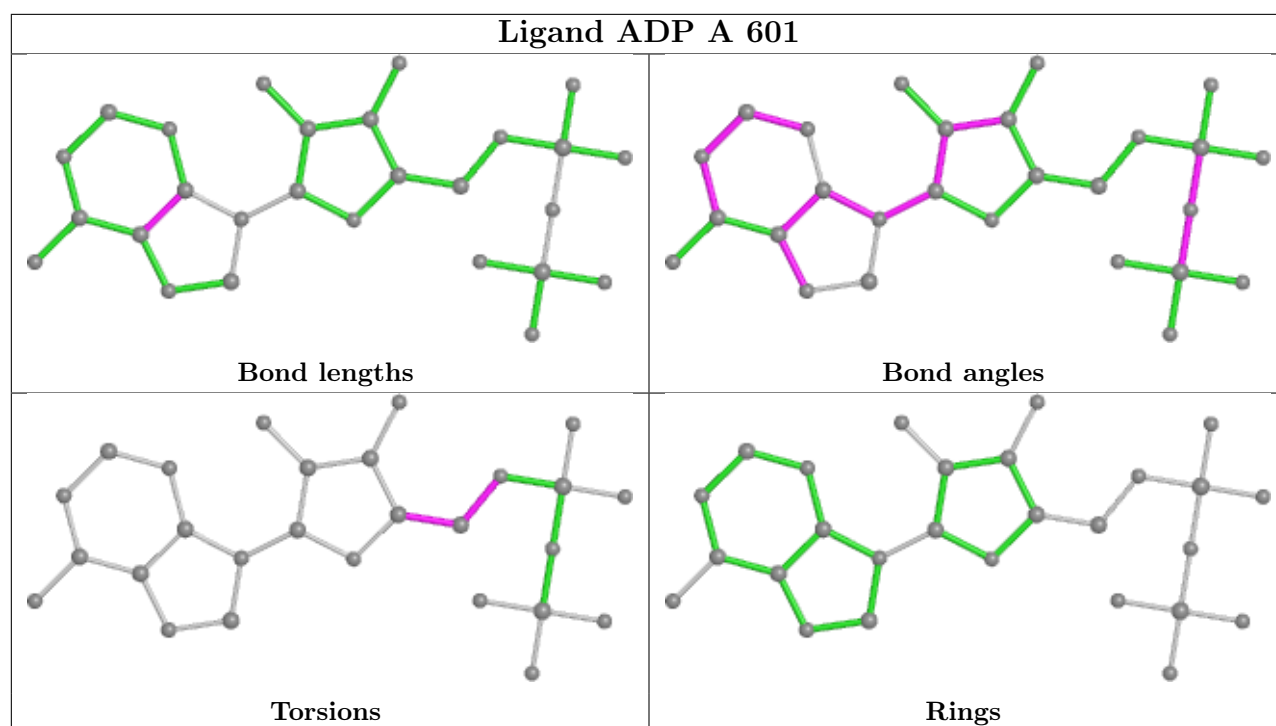
There are no ring outliers.

2 monomers are involved in 4 short contacts:

Mol	Chain	Res	Type	Clashes	Symm-Clashes
3	C	601	ADP	3	0
3	A	601	ADP	1	0

The following is a two-dimensional graphical depiction of Mogul quality analysis of bond lengths, bond angles, torsion angles, and ring geometry for all instances of the Ligand of Interest. In addition, ligands with molecular weight > 250 and outliers as shown on the validation Tables will also be included. For torsion angles, if less than 5% of the Mogul distribution of torsion angles is within 10 degrees of the torsion angle in question, then that torsion angle is considered an outlier. Any bond that is central to one or more torsion angles identified as an outlier by Mogul will be highlighted in the graph. For rings, the root-mean-square deviation (RMSD) between the ring in question and similar rings identified by Mogul is calculated over all ring torsion angles. If the average RMSD is greater than 60 degrees and the minimal RMSD between the ring in question and any Mogul-identified rings is also greater than 60 degrees, then that ring is considered an outlier. The outliers are highlighted in purple. The color gray indicates Mogul did not find sufficient equivalents in the CSD to analyse the geometry.





## 5.7 Other polymers [i](#)

There are no such residues in this entry.

## 5.8 Polymer linkage issues [i](#)

There are no chain breaks in this entry.

## 6 Fit of model and data [i](#)

### 6.1 Protein, DNA and RNA chains [i](#)

In the following table, the column labelled ‘#RSRZ> 2’ contains the number (and percentage) of RSRZ outliers, followed by percent RSRZ outliers for the chain as percentile scores relative to all X-ray entries and entries of similar resolution. The OWAB column contains the minimum, median, 95<sup>th</sup> percentile and maximum values of the occupancy-weighted average B-factor per residue. The column labelled ‘Q< 0.9’ lists the number of (and percentage) of residues with an average occupancy less than 0.9.

Mol	Chain	Analysed	<RSRZ>	#RSRZ>2	OWAB(Å <sup>2</sup> )	Q<0.9
1	A	413/526 (78%)	0.29	10 (2%) 59 49	72, 90, 119, 121	0
1	C	408/526 (77%)	0.20	10 (2%) 57 47	71, 93, 117, 120	0
2	B	88/99 (88%)	0.04	2 (2%) 60 51	86, 96, 105, 107	0
2	D	89/99 (89%)	0.15	3 (3%) 45 36	83, 90, 97, 101	0
All	All	998/1250 (79%)	0.22	25 (2%) 57 47	71, 92, 117, 121	0

The worst 5 of 25 RSRZ outliers are listed below:

Mol	Chain	Res	Type	RSRZ
1	A	287	THR	4.2
1	A	454	ASN	3.7
1	A	453	ILE	3.6
1	C	274	CYS	3.4
1	A	349	ALA	2.6

### 6.2 Non-standard residues in protein, DNA, RNA chains [i](#)

There are no non-standard protein/DNA/RNA residues in this entry.

### 6.3 Carbohydrates [i](#)

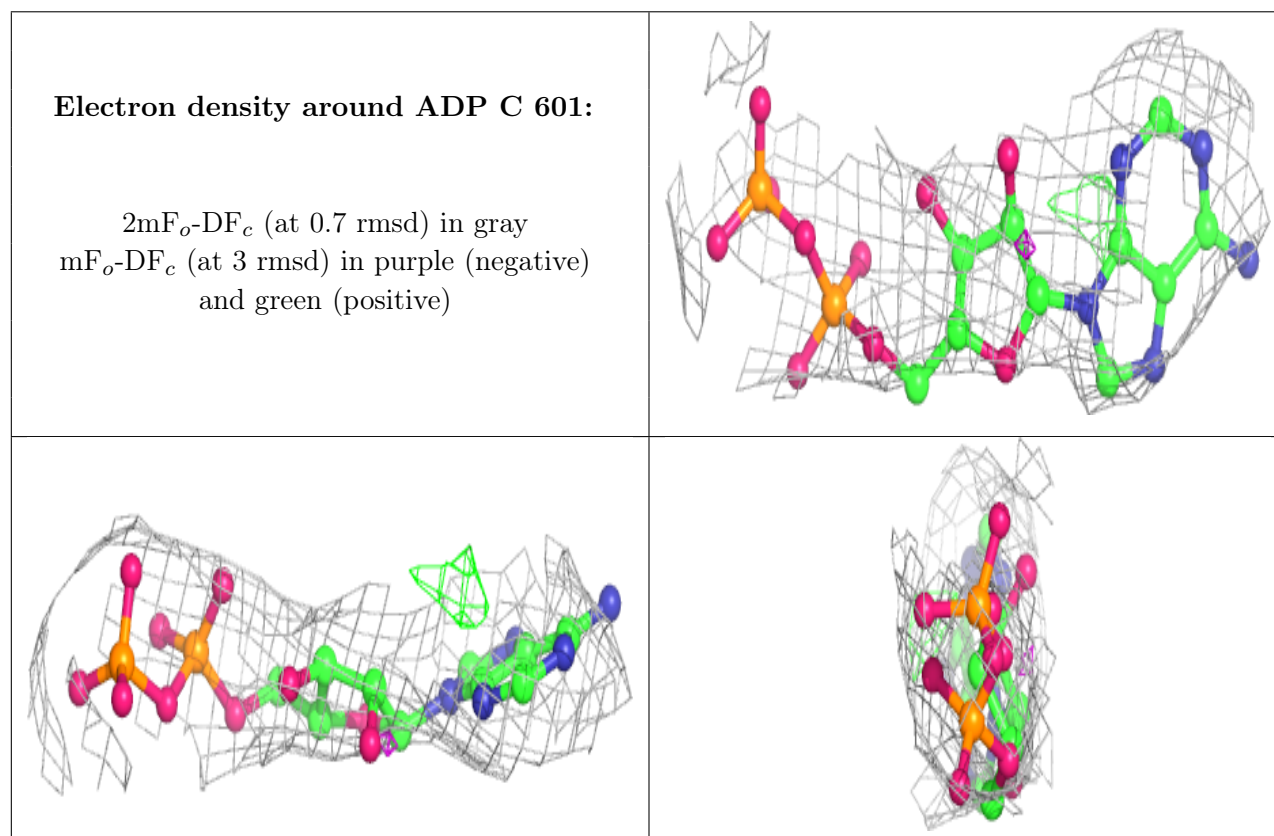
There are no monosaccharides in this entry.

### 6.4 Ligands [i](#)

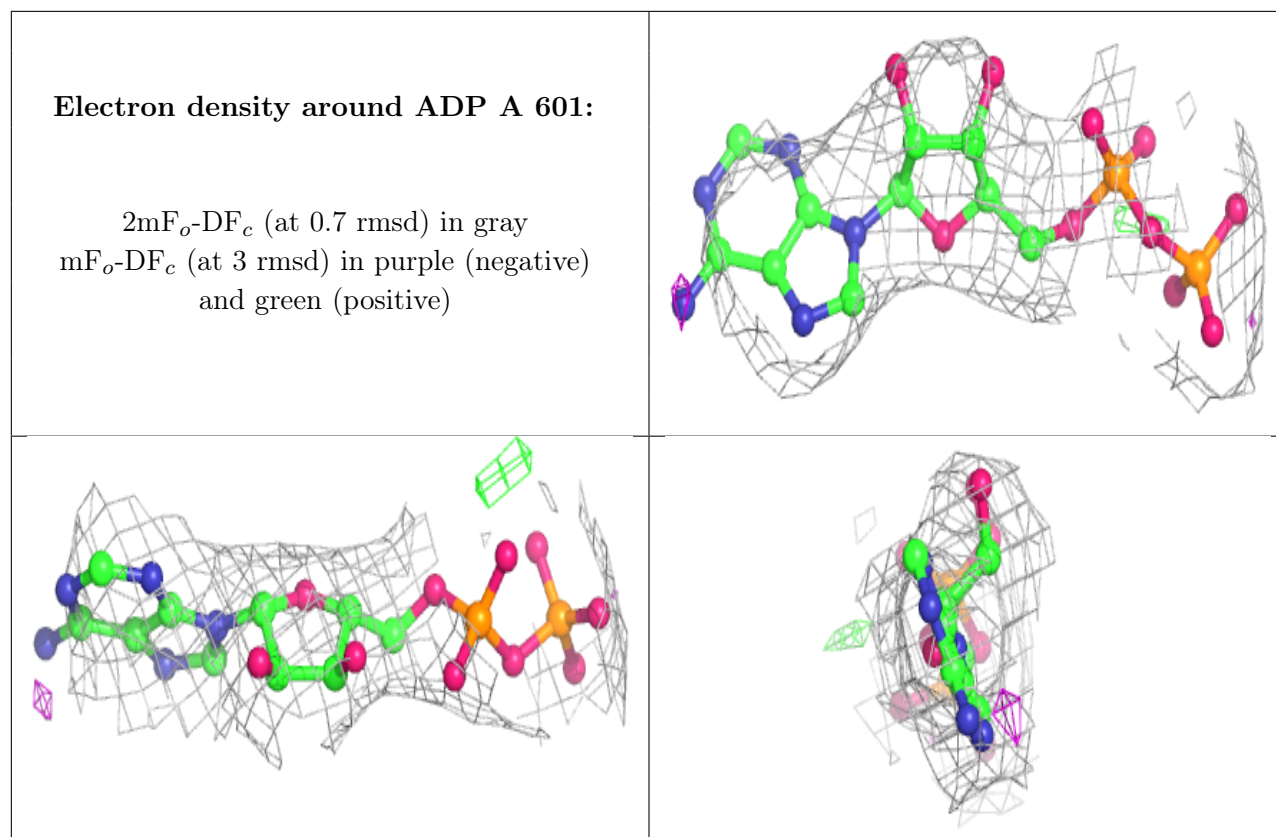
In the following table, the Atoms column lists the number of modelled atoms in the group and the number defined in the chemical component dictionary. The B-factors column lists the minimum, median, 95<sup>th</sup> percentile and maximum values of B factors of atoms in the group. The column labelled ‘Q< 0.9’ lists the number of atoms with occupancy less than 0.9.

Mol	Type	Chain	Res	Atoms	RSCC	RSR	B-factors( $\text{\AA}^2$ )	Q<0.9
3	ADP	C	601	27/27	0.81	0.39	88,88,88,88	0
3	ADP	A	601	27/27	0.88	0.28	85,85,85,85	0

The following is a graphical depiction of the model fit to experimental electron density of all instances of the Ligand of Interest. In addition, ligands with molecular weight > 250 and outliers as shown on the geometry validation Tables will also be included. Each fit is shown from different orientation to approximate a three-dimensional view.







## 6.5 Other polymers [i](#)

There are no such residues in this entry.