



wwPDB EM Validation Summary Report ⓘ

Oct 16, 2024 – 12:27 AM JST

PDB ID : 8JIT
EMDB ID : EMD-36327
Title : Cryo-EM structure of the GLP-1R/GCGR dual agonist MEDI0382-bound human GCGR-Gs complex
Authors : Yang, L.; Zhou, Q.T.; Dai, A.T.; Zhao, F.H.; Chang, R.L.; Ying, T.L.; Wu, B.L.; Yang, D.H.; Wang, M.W.; Cong, Z.T.
Deposited on : 2023-05-27
Resolution : 2.91 Å(reported)

This is a wwPDB EM Validation Summary Report for a publicly released PDB entry.

We welcome your comments at validation@mail.wwpdb.org

A user guide is available at

<https://www.wwpdb.org/validation/2017/EMValidationReportHelp>
with specific help available everywhere you see the ⓘ symbol.

The types of validation reports are described at

<http://www.wwpdb.org/validation/2017/FAQs#types>.

The following versions of software and data (see [references ⓘ](#)) were used in the production of this report:

EMDB validation analysis : **FAILED**
Mogul : 1.8.5 (274361), CSD as541be (2020)
MolProbity : 4.02b-467
buster-report : 1.1.7 (2018)
Percentile statistics : 20231227.v01 (using entries in the PDB archive December 27th 2023)
MapQ : **FAILED**
Ideal geometry (proteins) : Engh & Huber (2001)
Ideal geometry (DNA, RNA) : Parkinson et al. (1996)
Validation Pipeline (wwPDB-VP) : 2.39

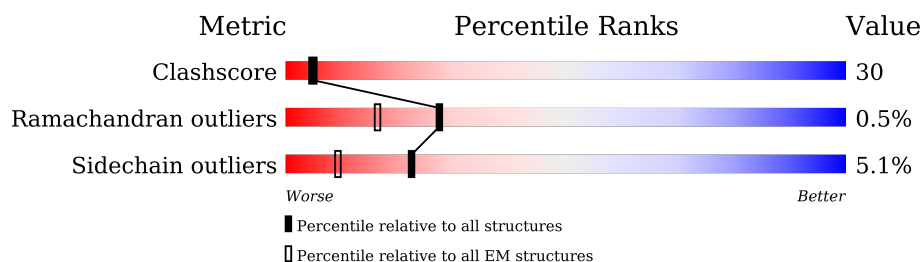
1 Overall quality at a glance

The following experimental techniques were used to determine the structure:

ELECTRON MICROSCOPY

The reported resolution of this entry is 2.91 Å.

Percentile scores (ranging between 0-100) for global validation metrics of the entry are shown in the following graphic. The table shows the number of entries on which the scores are based.



Metric	Whole archive (#Entries)	EM structures (#Entries)
Clashscore	210492	15764
Ramachandran outliers	207382	16835
Sidechain outliers	206894	16415

The table below summarises the geometric issues observed across the polymeric chains and their fit to the map. The red, orange, yellow and green segments of the bar indicate the fraction of residues that contain outliers for ≥ 3 , 2, 1 and 0 types of geometric quality criteria respectively. A grey segment represents the fraction of residues that are not modelled. The numeric value for each fraction is indicated below the corresponding segment, with a dot representing fractions $\leq 5\%$.

Mol	Chain	Length	Quality of chain
1	A	394	
2	P	29	
3	B	345	
4	C	70	
5	N	140	
6	R	405	

2 Entry composition [i](#)

There are 7 unique types of molecules in this entry. The entry contains 9227 atoms, of which 34 are hydrogens and 0 are deuteriums.

In the tables below, the AltConf column contains the number of residues with at least one atom in alternate conformation and the Trace column contains the number of residues modelled with at most 2 atoms.

- Molecule 1 is a protein called Guanine nucleotide-binding protein G(s) subunit alpha isoforms short.

Mol	Chain	Residues	Atoms					AltConf	Trace
1	A	229	Total	C	N	O	S	0	0
			1868	1179	341	342	6		

There are 8 discrepancies between the modelled and reference sequences:

Chain	Residue	Modelled	Actual	Comment	Reference
A	48	ASN	SER	conflict	UNP P63092
A	210	ALA	GLY	conflict	UNP P63092
A	252	ALA	GLU	conflict	UNP P63092
A	255	LYS	ASN	conflict	UNP P63092
A	258	ASP	LYS	conflict	UNP P63092
A	264	LYS	ARG	conflict	UNP P63092
A	268	ASP	THR	conflict	UNP P63092
A	269	THR	ILE	conflict	UNP P63092

- Molecule 2 is a protein called MEDI0382.

Mol	Chain	Residues	Atoms				AltConf	Trace
2	P	29	Total	C	N	O	0	0
			233	144	40	49		

- Molecule 3 is a protein called Guanine nucleotide-binding protein G(I)/G(S)/G(T) subunit beta-1.

Mol	Chain	Residues	Atoms					AltConf	Trace
3	B	339	Total	C	N	O	S	0	0
			2574	1589	461	503	21		

There are 6 discrepancies between the modelled and reference sequences:

Chain	Residue	Modelled	Actual	Comment	Reference
B	-4	MET	-	initiating methionine	UNP P54311

Continued on next page...

Continued from previous page...

Chain	Residue	Modelled	Actual	Comment	Reference
B	-3	GLY	-	expression tag	UNP P54311
B	-2	SER	-	expression tag	UNP P54311
B	-1	LEU	-	expression tag	UNP P54311
B	0	LEU	-	expression tag	UNP P54311
B	1	GLN	-	expression tag	UNP P54311

- Molecule 4 is a protein called Guanine nucleotide-binding protein G(I)/G(S)/G(O) subunit gamma-2.

Mol	Chain	Residues	Atoms					AltConf	Trace
4	C	56	Total	C	N	O	S	0	0
			420	263	73	81	3		

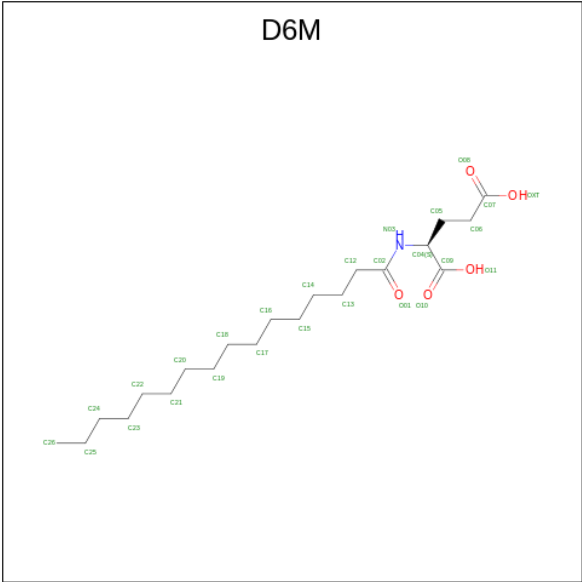
- Molecule 5 is a protein called Nanobody 35.

Mol	Chain	Residues	Atoms					AltConf	Trace
5	N	128	Total	C	N	O	S	0	0
			964	601	169	188	6		

- Molecule 6 is a protein called Glucagon receptor.

Mol	Chain	Residues	Atoms					AltConf	Trace
6	R	395	Total	C	N	O	S	0	0
			3108	2039	532	517	20		

- Molecule 7 is N-hexadecanoyl-L-glutamic acid (three-letter code: D6M) (formula: C₂₁H₃₉NO₅) (labeled as "Ligand of Interest" by depositor).

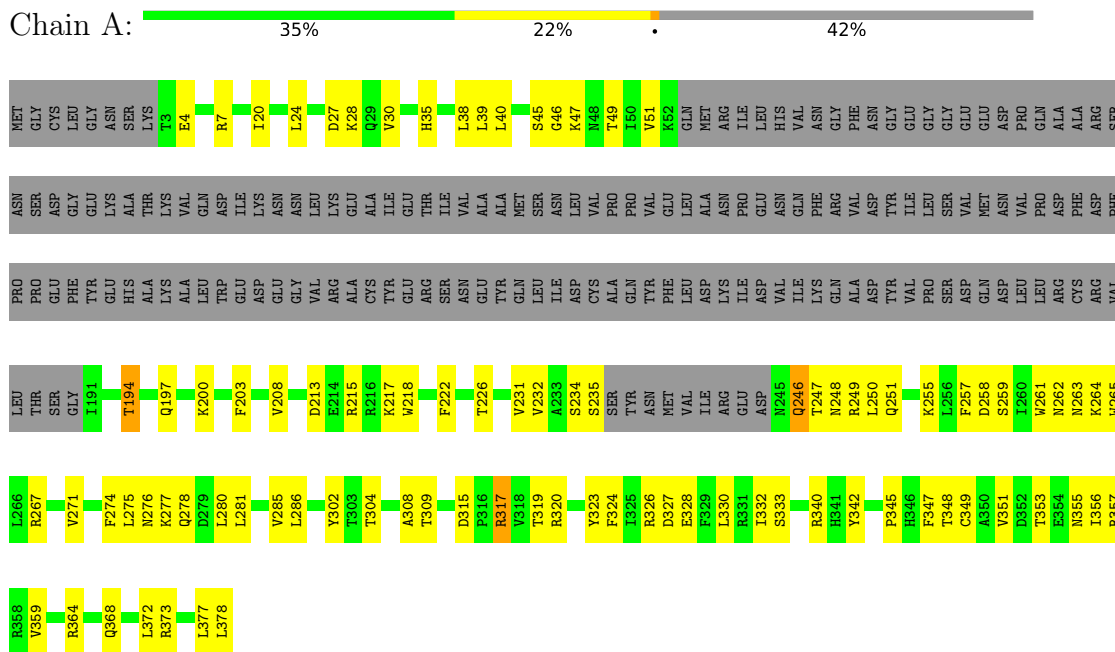


Mol	Chain	Residues	Atoms					AltConf
7	P	1	Total	C	H	N	O	0
			60	21	34	1	4	

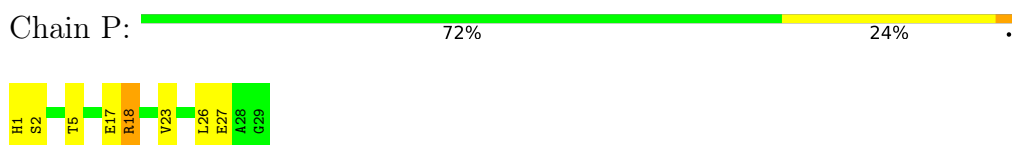
3 Residue-property plots

These plots are drawn for all protein, RNA, DNA and oligosaccharide chains in the entry. The first graphic for a chain summarises the proportions of the various outlier classes displayed in the second graphic. The second graphic shows the sequence view annotated by issues in geometry. Residues are color-coded according to the number of geometric quality criteria for which they contain at least one outlier: green = 0, yellow = 1, orange = 2 and red = 3 or more. Stretches of 2 or more consecutive residues without any outlier are shown as a green connector. Residues present in the sample, but not in the model, are shown in grey.

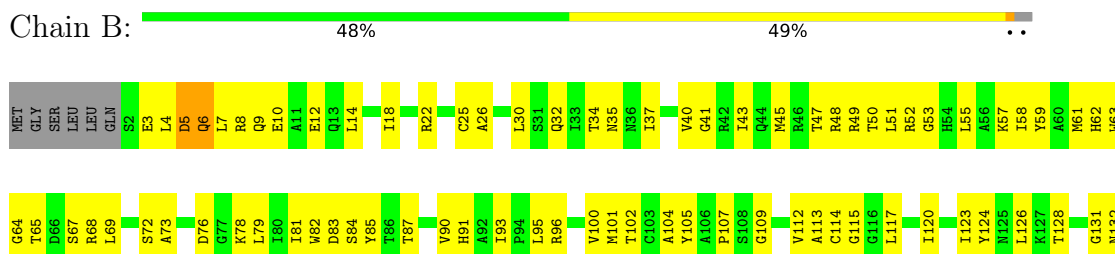
- Molecule 1: Guanine nucleotide-binding protein G(s) subunit alpha isoforms short

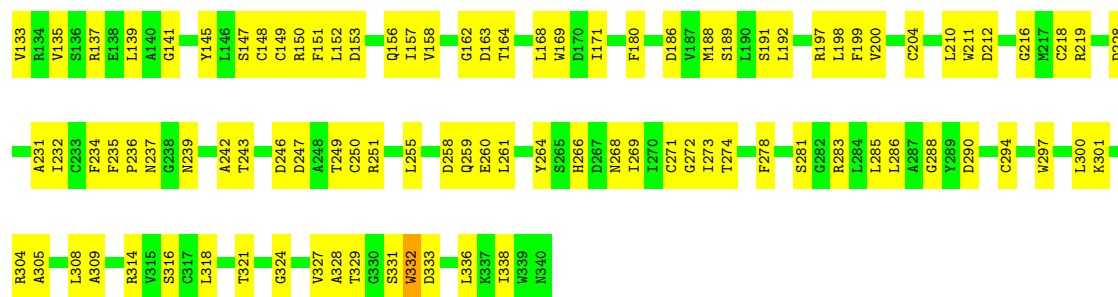


- Molecule 2: MEDI0382



- Molecule 3: Guanine nucleotide-binding protein G(I)/G(S)/G(T) subunit beta-1





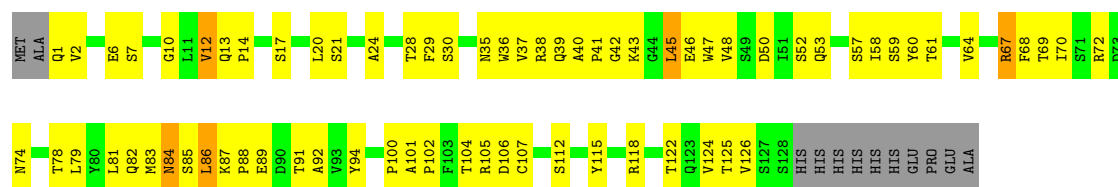
- Molecule 4: Guanine nucleotide-binding protein G(I)/G(S)/G(O) subunit gamma-2

Chain C: 51% 27% 20%



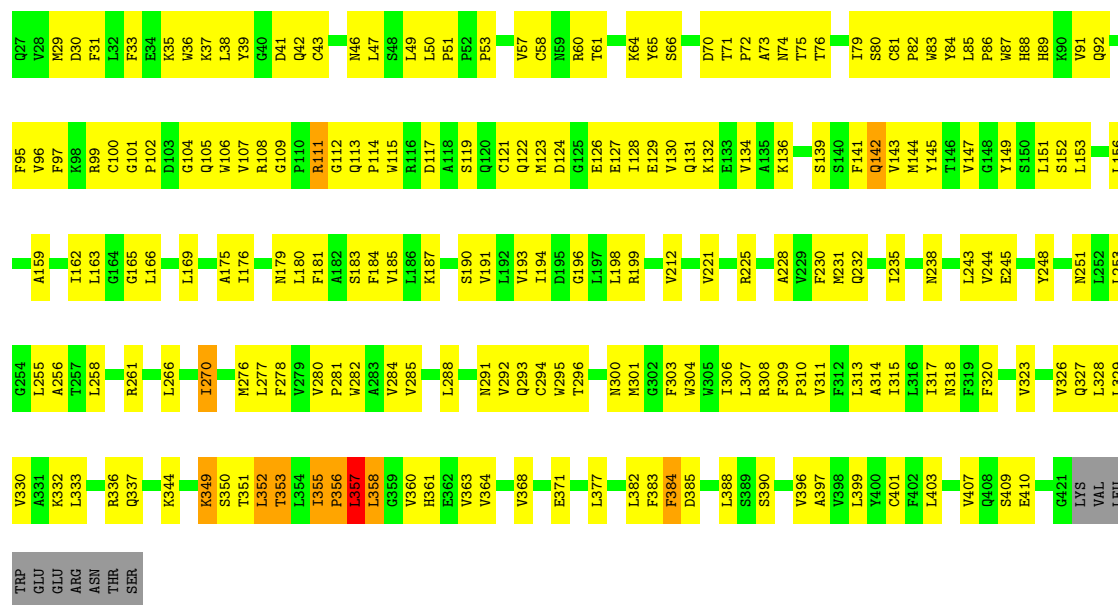
- Molecule 5: Nanobody 35

Chain N: 41% 47% 9%



- Molecule 6: Glucagon receptor

Chain R: 47% 48%



4 Experimental information

Property	Value	Source
EM reconstruction method	SINGLE PARTICLE	Depositor
Imposed symmetry	POINT, Not provided	
Number of particles used	657161	Depositor
Resolution determination method	FSC 0.143 CUT-OFF	Depositor
CTF correction method	PHASE FLIPPING AND AMPLITUDE CORRECTION	Depositor
Microscope	FEI TITAN KRIOS	Depositor
Voltage (kV)	300	Depositor
Electron dose ($e^-/\text{\AA}^2$)	80	Depositor
Minimum defocus (nm)	1200	Depositor
Maximum defocus (nm)	2200	Depositor
Magnification	Not provided	
Image detector	GATAN K3 (6k x 4k)	Depositor

5 Model quality [i](#)

5.1 Standard geometry [i](#)

Bond lengths and bond angles in the following residue types are not validated in this section: D6M

The Z score for a bond length (or angle) is the number of standard deviations the observed value is removed from the expected value. A bond length (or angle) with $|Z| > 5$ is considered an outlier worth inspection. RMSZ is the root-mean-square of all Z scores of the bond lengths (or angles).

Mol	Chain	Bond lengths		Bond angles	
		RMSZ	$\# Z > 5$	RMSZ	$\# Z > 5$
1	A	0.30	0/1903	0.42	0/2565
2	P	0.41	0/238	0.43	0/320
3	B	0.32	0/2621	0.46	0/3556
4	C	0.29	0/426	0.49	0/576
5	N	0.41	0/984	0.57	0/1333
6	R	0.31	0/3200	0.43	0/4362
All	All	0.32	0/9372	0.46	0/12712

There are no bond length outliers.

There are no bond angle outliers.

There are no chirality outliers.

There are no planarity outliers.

5.2 Too-close contacts [i](#)

In the following table, the Non-H and H(model) columns list the number of non-hydrogen atoms and hydrogen atoms in the chain respectively. The H(added) column lists the number of hydrogen atoms added and optimized by MolProbity. The Clashes column lists the number of clashes within the asymmetric unit, whereas Symm-Clashes lists symmetry-related clashes.

Mol	Chain	Non-H	H(model)	H(added)	Clashes	Symm-Clashes
1	A	1868	0	1822	76	0
2	P	233	0	206	11	0
3	B	2574	0	2456	172	0
4	C	420	0	421	28	0
5	N	964	0	925	60	0
6	R	3108	0	3039	229	0
7	P	26	34	37	0	0
All	All	9193	34	8906	539	0

The all-atom clashscore is defined as the number of clashes found per 1000 atoms (including hydrogen atoms). The all-atom clashscore for this structure is 30.

The worst 5 of 539 close contacts within the same asymmetric unit are listed below, sorted by their clash magnitude.

Atom-1	Atom-2	Interatomic distance (Å)	Clash overlap (Å)
3:B:259:GLN:HE22	4:C:30:VAL:HG22	1.17	1.04
3:B:198:LEU:HD23	3:B:210:LEU:HD21	1.43	0.99
3:B:281:SER:HB3	4:C:48:ASP:HB2	1.49	0.94
3:B:34:THR:HG21	3:B:300:LEU:HB3	1.49	0.91
5:N:17:SER:HB3	5:N:82:GLN:HE22	1.36	0.90

There are no symmetry-related clashes.

5.3 Torsion angles [i](#)

5.3.1 Protein backbone [i](#)

In the following table, the Percentiles column shows the percent Ramachandran outliers of the chain as a percentile score with respect to all PDB entries followed by that with respect to all EM entries.

The Analysed column shows the number of residues for which the backbone conformation was analysed, and the total number of residues.

Mol	Chain	Analysed	Favoured	Allowed	Outliers	Percentiles	
1	A	223/394 (57%)	212 (95%)	10 (4%)	1 (0%)	30	59
2	P	27/29 (93%)	26 (96%)	1 (4%)	0	100	100
3	B	337/345 (98%)	320 (95%)	15 (4%)	2 (1%)	22	51
4	C	54/70 (77%)	52 (96%)	2 (4%)	0	100	100
5	N	126/140 (90%)	112 (89%)	14 (11%)	0	100	100
6	R	393/405 (97%)	368 (94%)	22 (6%)	3 (1%)	16	44
All	All	1160/1383 (84%)	1090 (94%)	64 (6%)	6 (0%)	27	55

5 of 6 Ramachandran outliers are listed below:

Mol	Chain	Res	Type
1	A	246	GLN
6	R	384	PHE
3	B	332	TRP

Continued on next page...

Continued from previous page...

Mol	Chain	Res	Type
3	B	309	ALA
6	R	356	PRO

5.3.2 Protein sidechains ⓘ

In the following table, the Percentiles column shows the percent sidechain outliers of the chain as a percentile score with respect to all PDB entries followed by that with respect to all EM entries.

The Analysed column shows the number of residues for which the sidechain conformation was analysed, and the total number of residues.

Mol	Chain	Analysed	Rotameric	Outliers	Percentiles	
1	A	196/349 (56%)	188 (96%)	8 (4%)	26	58
2	P	24/24 (100%)	22 (92%)	2 (8%)	9	27
3	B	274/287 (96%)	262 (96%)	12 (4%)	24	55
4	C	43/57 (75%)	42 (98%)	1 (2%)	45	75
5	N	103/116 (89%)	92 (89%)	11 (11%)	5	16
6	R	319/353 (90%)	304 (95%)	15 (5%)	22	53
All	All	959/1186 (81%)	910 (95%)	49 (5%)	22	50

5 of 49 residues with a non-rotameric sidechain are listed below:

Mol	Chain	Res	Type
5	N	46	GLU
6	R	142	GLN
5	N	67	ARG
5	N	112	SER
6	R	261	ARG

Sometimes sidechains can be flipped to improve hydrogen bonding and reduce clashes. 5 of 9 such sidechains are listed below:

Mol	Chain	Res	Type
6	R	392	GLN
6	R	408	GLN
5	N	82	GLN
5	N	84	ASN
6	R	113	GLN

5.3.3 RNA ⓘ

There are no RNA molecules in this entry.

5.4 Non-standard residues in protein, DNA, RNA chains ⓘ

There are no non-standard protein/DNA/RNA residues in this entry.

5.5 Carbohydrates ⓘ

There are no oligosaccharides in this entry.

5.6 Ligand geometry ⓘ

1 ligand is modelled in this entry.

In the following table, the Counts columns list the number of bonds (or angles) for which Mogul statistics could be retrieved, the number of bonds (or angles) that are observed in the model and the number of bonds (or angles) that are defined in the Chemical Component Dictionary. The Link column lists molecule types, if any, to which the group is linked. The Z score for a bond length (or angle) is the number of standard deviations the observed value is removed from the expected value. A bond length (or angle) with $|Z| > 2$ is considered an outlier worth inspection. RMSZ is the root-mean-square of all Z scores of the bond lengths (or angles).

Mol	Type	Chain	Res	Link	Bond lengths			Bond angles		
					Counts	RMSZ	# $ Z > 2$	Counts	RMSZ	# $ Z > 2$
7	D6M	P	101	2	25,25,26	0.78	1 (4%)	27,27,29	1.20	2 (7%)

In the following table, the Chirals column lists the number of chiral outliers, the number of chiral centers analysed, the number of these observed in the model and the number defined in the Chemical Component Dictionary. Similar counts are reported in the Torsion and Rings columns. '-' means no outliers of that kind were identified.

Mol	Type	Chain	Res	Link	Chirals	Torsions	Rings
7	D6M	P	101	2	-	9/26/27/28	-

All (1) bond length outliers are listed below:

Mol	Chain	Res	Type	Atoms	Z	Observed(Å)	Ideal(Å)
7	P	101	D6M	O08-C07	2.59	1.34	1.19

All (2) bond angle outliers are listed below:

Mol	Chain	Res	Type	Atoms	Z	Observed(°)	Ideal(°)
7	P	101	D6M	O08-C07-C06	-4.57	96.92	126.89
7	P	101	D6M	C05-C04-N03	2.35	115.62	110.88

There are no chirality outliers.

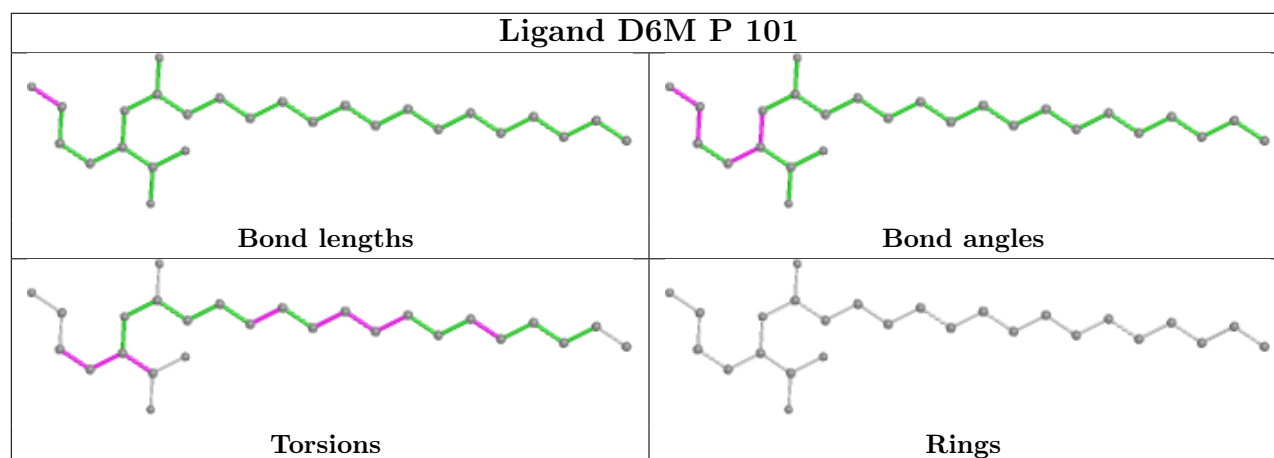
5 of 9 torsion outliers are listed below:

Mol	Chain	Res	Type	Atoms
7	P	101	D6M	C04-C05-C06-C07
7	P	101	D6M	C20-C21-C22-C23
7	P	101	D6M	C16-C17-C18-C19
7	P	101	D6M	C13-C14-C15-C16
7	P	101	D6M	C17-C18-C19-C20

There are no ring outliers.

No monomer is involved in short contacts.

The following is a two-dimensional graphical depiction of Mogul quality analysis of bond lengths, bond angles, torsion angles, and ring geometry for all instances of the Ligand of Interest. In addition, ligands with molecular weight > 250 and outliers as shown on the validation Tables will also be included. For torsion angles, if less than 5% of the Mogul distribution of torsion angles is within 10 degrees of the torsion angle in question, then that torsion angle is considered an outlier. Any bond that is central to one or more torsion angles identified as an outlier by Mogul will be highlighted in the graph. For rings, the root-mean-square deviation (RMSD) between the ring in question and similar rings identified by Mogul is calculated over all ring torsion angles. If the average RMSD is greater than 60 degrees and the minimal RMSD between the ring in question and any Mogul-identified rings is also greater than 60 degrees, then that ring is considered an outlier. The outliers are highlighted in purple. The color gray indicates Mogul did not find sufficient equivalents in the CSD to analyse the geometry.



5.7 Other polymers [i](#)

There are no such residues in this entry.

5.8 Polymer linkage issues [i](#)

There are no chain breaks in this entry.