



Full wwPDB EM Validation Report ⓘ

Oct 6, 2024 – 05:32 PM JST

PDB ID : 3JA9
EMDB ID : EMD-6339
Title : Structure of native human PCNA
Authors : Lau, W.C.Y.; Li, Y.; Zhang, Q.; Huen, M.S.Y.
Deposited on : 2015-05-19
Resolution : 22.00 Å(reported)
Based on initial model : 1VYM

This is a Full wwPDB EM Validation Report for a publicly released PDB entry.

We welcome your comments at validation@mail.wwpdb.org

A user guide is available at

<https://www.wwpdb.org/validation/2017/EMValidationReportHelp>
with specific help available everywhere you see the ⓘ symbol.

The types of validation reports are described at

<http://www.wwpdb.org/validation/2017/FAQs#types>.

The following versions of software and data (see [references ⓘ](#)) were used in the production of this report:

EMDB validation analysis : 0.0.1.dev113
MolProbity : 4.02b-467
Percentile statistics : 20231227.v01 (using entries in the PDB archive December 27th 2023)
MapQ : 1.9.13
Ideal geometry (proteins) : Engh & Huber (2001)
Ideal geometry (DNA, RNA) : Parkinson et al. (1996)
Validation Pipeline (wwPDB-VP) : 2.39

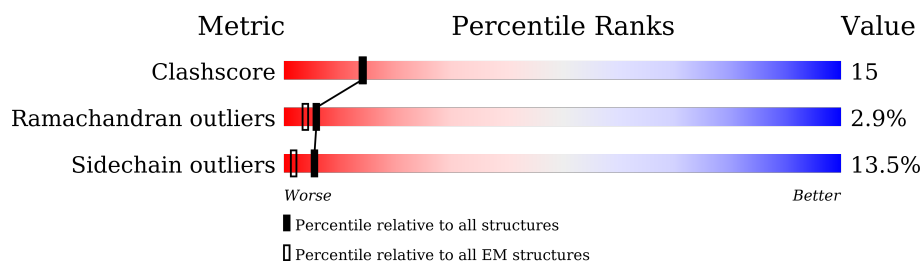
1 Overall quality at a glance

The following experimental techniques were used to determine the structure:

ELECTRON MICROSCOPY

The reported resolution of this entry is 22.00 Å.

Percentile scores (ranging between 0-100) for global validation metrics of the entry are shown in the following graphic. The table shows the number of entries on which the scores are based.



Metric	Whole archive (#Entries)	EM structures (#Entries)
Clashscore	210492	15764
Ramachandran outliers	207382	16835
Sidechain outliers	206894	16415

The table below summarises the geometric issues observed across the polymeric chains and their fit to the map. The red, orange, yellow and green segments of the bar indicate the fraction of residues that contain outliers for ≥ 3 , 2, 1 and 0 types of geometric quality criteria respectively. A grey segment represents the fraction of residues that are not modelled. The numeric value for each fraction is indicated below the corresponding segment, with a dot representing fractions $\leq 5\%$. The upper red bar (where present) indicates the fraction of residues that have poor fit to the EM map (all-atom inclusion $< 40\%$). The numeric value is given above the bar.

Mol	Chain	Length	Quality of chain
1	A	261	<div> <div>27%</div> <div>69%</div> <div>22%</div> <div>6%</div> <div>••</div> </div>
1	B	261	<div> <div>42%</div> <div>63%</div> <div>26%</div> <div>7%</div> <div>••</div> </div>
1	C	261	<div> <div>11%</div> <div>68%</div> <div>24%</div> <div>5%</div> <div>••</div> </div>

2 Entry composition

There are 2 unique types of molecules in this entry. The entry contains 6033 atoms, of which 0 are hydrogens and 0 are deuteriums.

In the tables below, the AltConf column contains the number of residues with at least one atom in alternate conformation and the Trace column contains the number of residues modelled with at most 2 atoms.

- Molecule 1 is a protein called Proliferating cell nuclear antigen.

Mol	Chain	Residues	Atoms					AltConf	Trace
1	A	256	Total 1964	C 1233	N 323	O 392	S 16	0	1
1	B	256	Total 1964	C 1233	N 323	O 392	S 16	0	1
1	C	256	Total 1964	C 1233	N 323	O 392	S 16	0	1

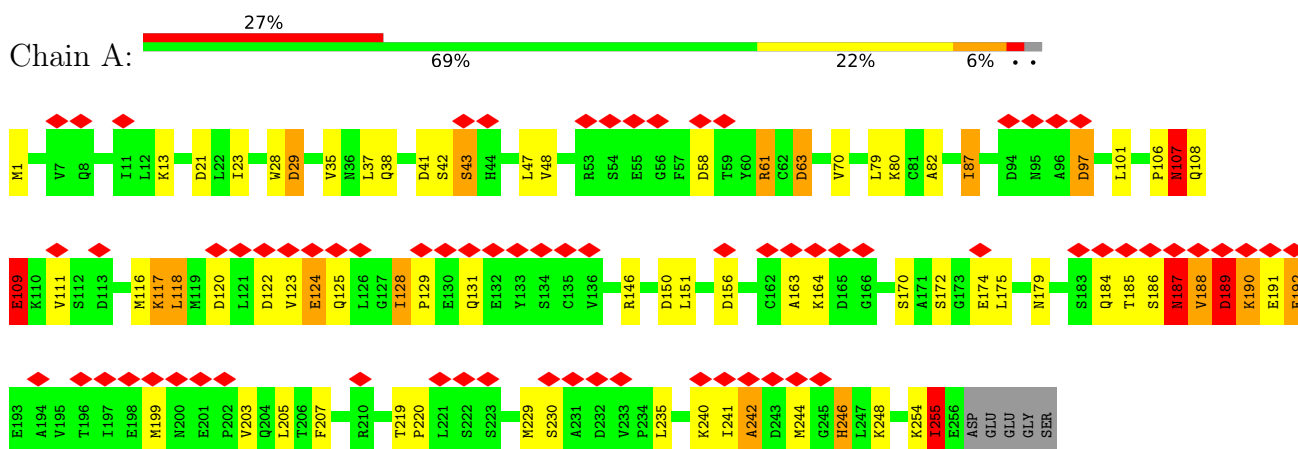
- Molecule 2 is water.

Mol	Chain	Residues	Atoms		AltConf
2	A	39	Total 39	O 39	0
2	B	44	Total 44	O 44	0
2	C	58	Total 58	O 58	0

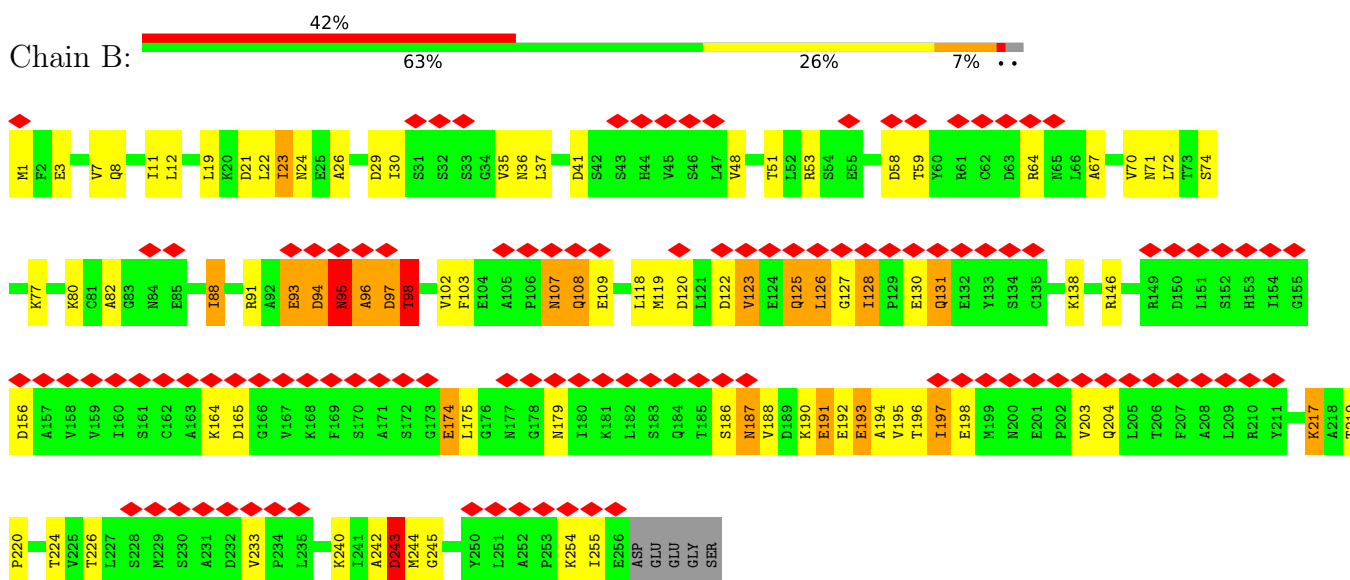
3 Residue-property plots

These plots are drawn for all protein, RNA, DNA and oligosaccharide chains in the entry. The first graphic for a chain summarises the proportions of the various outlier classes displayed in the second graphic. The second graphic shows the sequence view annotated by issues in geometry and atom inclusion in map density. Residues are color-coded according to the number of geometric quality criteria for which they contain at least one outlier: green = 0, yellow = 1, orange = 2 and red = 3 or more. A red diamond above a residue indicates a poor fit to the EM map for this residue (all-atom inclusion < 40%). Stretches of 2 or more consecutive residues without any outlier are shown as a green connector. Residues present in the sample, but not in the model, are shown in grey.

• Molecule 1: Proliferating cell nuclear antigen

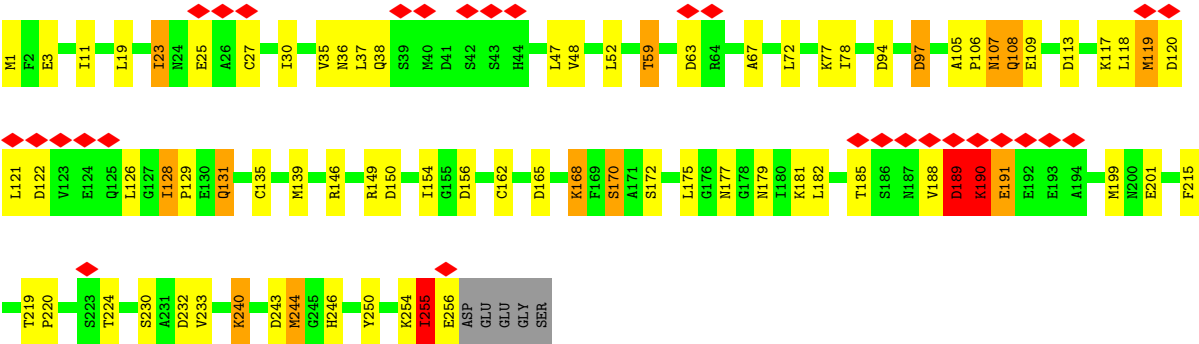


• Molecule 1: Proliferating cell nuclear antigen



• Molecule 1: Proliferating cell nuclear antigen





4 Experimental information

Property	Value	Source
EM reconstruction method	SINGLE PARTICLE	Depositor
Imposed symmetry	POINT, C1	Depositor
Number of particles used	7330	Depositor
Resolution determination method	FSC 0.143 CUT-OFF	Depositor
CTF correction method	Particles	Depositor
Microscope	JEOL 2010	Depositor
Voltage (kV)	200	Depositor
Electron dose ($e^-/\text{\AA}^2$)	18	Depositor
Minimum defocus (nm)	Not provided	
Maximum defocus (nm)	Not provided	
Magnification	50000	Depositor
Image detector	GATAN ULTRASCAN 4000 (4k x 4k)	Depositor
Maximum map value	2.774	Depositor
Minimum map value	-0.311	Depositor
Average map value	0.000	Depositor
Map value standard deviation	0.313	Depositor
Recommended contour level	1.27	Depositor
Map size (\AA)	222.56001, 222.56001, 222.56001	wwPDB
Map dimensions	104, 104, 104	wwPDB
Map angles ($^\circ$)	90.0, 90.0, 90.0	wwPDB
Pixel spacing (\AA)	2.14, 2.14, 2.14	Depositor

5 Model quality

5.1 Standard geometry

The Z score for a bond length (or angle) is the number of standard deviations the observed value is removed from the expected value. A bond length (or angle) with $|Z| > 5$ is considered an outlier worth inspection. RMSZ is the root-mean-square of all Z scores of the bond lengths (or angles).

Mol	Chain	Bond lengths		Bond angles	
		RMSZ	# Z >5	RMSZ	# Z >5
1	A	0.57	0/1990	0.95	10/2689 (0.4%)
1	B	0.61	0/1990	1.00	10/2689 (0.4%)
1	C	0.67	0/1990	1.01	12/2689 (0.4%)
All	All	0.62	0/5970	0.99	32/8067 (0.4%)

Chiral center outliers are detected by calculating the chiral volume of a chiral center and verifying if the center is modelled as a planar moiety or with the opposite hand. A planarity outlier is detected by checking planarity of atoms in a peptide group, atoms in a mainchain group or atoms of a sidechain that are expected to be planar.

Mol	Chain	#Chirality outliers	#Planarity outliers
1	A	0	3
1	B	0	2
All	All	0	5

There are no bond length outliers.

All (32) bond angle outliers are listed below:

Mol	Chain	Res	Type	Atoms	Z	Observed(°)	Ideal(°)
1	C	63	ASP	CB-CG-OD2	8.31	125.78	118.30
1	B	243	ASP	CB-CG-OD2	7.21	124.79	118.30
1	C	150	ASP	CB-CG-OD2	7.14	124.73	118.30
1	C	156	ASP	CB-CG-OD2	6.96	124.57	118.30
1	B	156	ASP	CB-CG-OD2	6.68	124.31	118.30
1	A	41	ASP	CB-CG-OD2	6.51	124.16	118.30
1	C	97	ASP	CB-CG-OD2	6.46	124.12	118.30
1	A	63	ASP	CB-CG-OD2	6.40	124.06	118.30
1	A	29	ASP	CB-CG-OD2	6.35	124.02	118.30
1	B	97	ASP	CB-CG-OD2	6.35	124.02	118.30
1	B	120	ASP	CB-CG-OD2	6.26	123.94	118.30
1	C	94	ASP	CB-CG-OD2	6.10	123.79	118.30
1	A	120	ASP	CB-CG-OD2	6.01	123.71	118.30

Continued on next page...

Continued from previous page...

Mol	Chain	Res	Type	Atoms	Z	Observed(°)	Ideal(°)
1	C	139	MET	CG-SD-CE	-6.01	90.59	100.20
1	A	122	ASP	CB-CG-OD2	5.84	123.56	118.30
1	A	150	ASP	CB-CG-OD1	5.57	123.32	118.30
1	A	21	ASP	CB-CG-OD2	5.54	123.29	118.30
1	C	120	ASP	CB-CG-OD2	5.49	123.24	118.30
1	C	113	ASP	CB-CG-OD2	5.43	123.18	118.30
1	B	58	ASP	CB-CG-OD2	5.42	123.18	118.30
1	B	217	LYS	CG-CD-CE	5.40	128.09	111.90
1	B	122	ASP	CB-CG-OD2	5.39	123.15	118.30
1	B	217	LYS	CD-CE-NZ	5.37	124.04	111.70
1	A	189	ASP	CB-CG-OD2	5.34	123.10	118.30
1	C	189	ASP	CB-CG-OD2	5.29	123.06	118.30
1	B	165	ASP	CB-CG-OD2	5.24	123.01	118.30
1	A	97	ASP	CB-CG-OD2	5.18	122.97	118.30
1	A	156	ASP	CB-CG-OD2	5.11	122.90	118.30
1	C	243	ASP	CB-CG-OD2	5.09	122.88	118.30
1	C	122	ASP	CB-CG-OD2	5.08	122.88	118.30
1	B	70	VAL	CB-CA-C	-5.04	101.83	111.40
1	C	232	ASP	CB-CG-OD2	5.02	122.82	118.30

There are no chirality outliers.

All (5) planarity outliers are listed below:

Mol	Chain	Res	Type	Group
1	A	107	ASN	Peptide
1	A	109	GLU	Peptide
1	A	192	GLU	Peptide
1	B	95	ASN	Mainchain
1	B	98	THR	Peptide

5.2 Too-close contacts

In the following table, the Non-H and H(model) columns list the number of non-hydrogen atoms and hydrogen atoms in the chain respectively. The H(added) column lists the number of hydrogen atoms added and optimized by MolProbity. The Clashes column lists the number of clashes within the asymmetric unit, whereas Symm-Clashes lists symmetry-related clashes.

Mol	Chain	Non-H	H(model)	H(added)	Clashes	Symm-Clashes
1	A	1964	0	1973	57	0
1	B	1964	0	1973	67	0
1	C	1964	0	1973	63	0

Continued on next page...

Continued from previous page...

Mol	Chain	Non-H	H(model)	H(added)	Clashes	Symm-Clashes
2	A	39	0	0	3	0
2	B	44	0	0	11	0
2	C	58	0	0	7	0
All	All	6033	0	5919	181	0

The all-atom clashscore is defined as the number of clashes found per 1000 atoms (including hydrogen atoms). The all-atom clashscore for this structure is 15.

All (181) close contacts within the same asymmetric unit are listed below, sorted by their clash magnitude.

Atom-1	Atom-2	Interatomic distance (Å)	Clash overlap (Å)
1:C:254:LYS:O	1:C:255:ILE:HB	1.28	1.07
1:C:128:ILE:HD13	1:C:129:PRO:HD2	1.36	1.02
1:B:187:ASN:ND2	1:B:188:VAL:HG23	1.75	1.00
1:B:187:ASN:HD22	1:B:188:VAL:HG23	1.28	0.98
1:A:187:ASN:HB3	1:A:190:LYS:NZ	1.81	0.96
1:A:37:LEU:HD23	1:A:38:GLN:N	1.80	0.96
1:C:128:ILE:CD1	1:C:129:PRO:HD2	2.00	0.91
1:A:254:LYS:O	1:A:255:ILE:O	1.88	0.90
1:A:188:VAL:O	1:A:189:ASP:HB2	1.70	0.89
1:B:226:THR:HB	2:B:2039:HOH:O	1.72	0.88
1:A:107:ASN:O	1:A:109:GLU:HG3	1.73	0.88
1:A:37:LEU:HD23	1:A:37:LEU:C	1.95	0.86
1:C:185:THR:HB	1:C:188:VAL:HG22	1.62	0.82
1:B:29:ASP:OD1	1:B:123:VAL:HG22	1.79	0.82
1:C:189:ASP:OD2	1:C:189:ASP:O	1.99	0.80
1:A:174:GLU:HG2	2:A:2029:HOH:O	1.82	0.79
1:B:29:ASP:OD1	1:B:123:VAL:CG2	2.30	0.79
1:C:254:LYS:O	1:C:255:ILE:CB	2.19	0.75
1:C:117:LYS:HA	2:C:2030:HOH:O	1.86	0.75
1:B:36:ASN:HB3	2:B:2008:HOH:O	1.87	0.73
1:B:125:GLN:O	1:B:126:LEU:HB2	1.86	0.73
1:A:106:PRO:HA	2:A:2017:HOH:O	1.87	0.73
1:C:128:ILE:CG1	1:C:129:PRO:HD2	2.19	0.72
1:A:117:LYS:O	1:A:118:LEU:HB2	1.88	0.71
1:A:187:ASN:HB3	1:A:190:LYS:HZ1	1.55	0.71
1:C:25:GLU:HG2	1:C:119:MET:SD	2.31	0.69
1:B:97:ASP:OD2	1:B:98:THR:HG23	1.93	0.69
1:C:52:LEU:HD22	1:C:244:MET:HE3	1.75	0.68
1:C:128:ILE:HD13	1:C:129:PRO:CD	2.20	0.68
1:C:126:LEU:HG	1:C:128:ILE:H	1.57	0.68

Continued on next page...

Continued from previous page...

Atom-1	Atom-2	Interatomic distance (Å)	Clash overlap (Å)
1:B:188:VAL:HG12	1:B:188:VAL:O	1.94	0.68
1:C:106:PRO:HD2	2:C:2024:HOH:O	1.92	0.68
1:A:246:HIS:CE1	1:A:248:LYS:HE3	2.30	0.67
1:C:59:THR:HG22	2:C:2001:HOH:O	1.95	0.67
1:B:174:GLU:H	1:B:174:GLU:CD	1.99	0.66
1:A:186:SER:O	1:A:188:VAL:HG23	1.96	0.66
1:C:190:LYS:O	1:C:191:GLU:HB3	1.96	0.65
1:A:123:VAL:HG13	1:A:124:GLU:N	2.11	0.65
1:C:255:ILE:HG23	1:C:256:GLU:N	2.12	0.64
1:C:59:THR:CG2	2:C:2001:HOH:O	2.46	0.63
1:A:187:ASN:HB3	1:A:190:LYS:HZ2	1.60	0.63
1:B:226:THR:CB	2:B:2039:HOH:O	2.38	0.63
1:B:67:ALA:HB1	1:B:123:VAL:HG23	1.79	0.62
1:B:93:GLU:O	1:B:94:ASP:CB	2.47	0.62
1:B:59:THR:HG22	2:B:2001:HOH:O	1.99	0.62
1:C:154:ILE:HD13	1:C:175:LEU:HD11	1.82	0.62
1:A:1:MET:SD	1:A:61:ARG:NH1	2.73	0.61
1:B:23:ILE:HD11	1:B:26:ALA:HB2	1.82	0.61
1:C:255:ILE:CG2	1:C:256:GLU:N	2.64	0.61
1:B:107:ASN:C	1:B:108:GLN:HG2	2.20	0.61
1:A:203:VAL:HG11	1:A:205:LEU:HD11	1.83	0.61
1:C:107:ASN:C	1:C:107:ASN:HD22	2.03	0.60
1:A:117:LYS:O	1:A:118:LEU:CB	2.49	0.60
1:B:94:ASP:O	1:B:95:ASN:HB2	2.02	0.59
1:B:21:ASP:OD2	1:B:217:LYS:CE	2.51	0.59
1:B:191:GLU:O	1:B:191:GLU:HG2	2.03	0.58
1:B:71:ASN:HB3	1:B:74:SER:OG	2.03	0.58
1:C:11:ILE:HG21	1:C:244:MET:HE2	1.86	0.58
1:C:189:ASP:O	1:C:189:ASP:CG	2.42	0.57
1:B:21:ASP:OD2	1:B:217:LYS:NZ	2.37	0.57
1:A:87:ILE:HD13	1:A:87:ILE:N	2.20	0.57
1:B:21:ASP:OD2	1:B:217:LYS:HE2	2.05	0.57
1:C:190:LYS:O	1:C:191:GLU:CB	2.54	0.56
1:B:67:ALA:CB	1:B:123:VAL:HG23	2.36	0.56
1:B:242:ALA:O	1:B:244:MET:N	2.34	0.56
1:B:97:ASP:HA	1:B:118:LEU:H	1.71	0.56
1:B:77:LYS:O	1:B:80:LYS:HB2	2.06	0.55
1:A:187:ASN:CB	1:A:190:LYS:HZ2	2.19	0.55
1:A:37:LEU:C	1:A:37:LEU:CD2	2.68	0.55
1:A:123:VAL:HG22	1:A:124:GLU:H	1.71	0.55
1:B:93:GLU:O	1:B:94:ASP:HB2	2.06	0.55

Continued on next page...

Continued from previous page...

Atom-1	Atom-2	Interatomic distance (Å)	Clash overlap (Å)
1:A:175:LEU:CD1	1:C:78:ILE:HD11	2.37	0.54
1:C:189:ASP:O	1:C:190:LYS:HB2	2.08	0.54
1:B:187:ASN:HD22	1:B:188:VAL:CG2	2.12	0.54
1:C:185:THR:CB	1:C:188:VAL:HG22	2.37	0.54
1:C:240:LYS:NZ	2:C:2056:HOH:O	2.37	0.54
1:A:175:LEU:HD13	1:C:78:ILE:HD11	1.90	0.53
1:C:27:CYS:SG	1:C:67:ALA:HB1	2.49	0.53
1:C:105:ALA:HB1	1:C:106:PRO:CD	2.38	0.53
1:A:61:ARG:NE	1:A:63:ASP:OD1	2.42	0.52
1:A:23:ILE:HD11	1:A:48:VAL:CG2	2.39	0.52
1:B:26:ALA:HB1	1:B:37:LEU:HD11	1.91	0.52
1:B:226:THR:CG2	2:B:2038:HOH:O	2.58	0.52
1:B:108:GLN:HA	2:B:2018:HOH:O	2.10	0.51
1:B:197:ILE:HD12	1:B:198:GLU:N	2.25	0.51
1:B:59:THR:CG2	2:B:2001:HOH:O	2.57	0.51
1:C:240:LYS:HE2	1:C:246:HIS:HB3	1.92	0.51
1:C:185:THR:HB	1:C:188:VAL:CG2	2.38	0.51
1:B:41:ASP:OD1	1:B:41:ASP:C	2.49	0.51
1:A:37:LEU:CD2	1:A:38:GLN:N	2.67	0.51
1:C:118:LEU:HD23	2:C:2028:HOH:O	2.12	0.50
1:C:154:ILE:HG21	1:C:177:ASN:HA	1.92	0.49
1:C:219:THR:N	1:C:220:PRO:CD	2.74	0.49
1:A:13:LYS:NZ	1:A:82:ALA:O	2.38	0.49
1:A:185:THR:HG21	1:C:109:GLU:HG2	1.93	0.49
1:A:87:ILE:N	1:A:87:ILE:CD1	2.76	0.49
1:B:174:GLU:CD	1:B:174:GLU:N	2.65	0.49
1:B:226:THR:C	2:B:2039:HOH:O	2.51	0.49
1:B:82:ALA:HB2	1:B:103:PHE:CG	2.48	0.48
1:B:88:ILE:HD13	1:B:103:PHE:CE1	2.48	0.48
1:A:187:ASN:CG	1:A:190:LYS:HZ2	2.17	0.48
1:B:30:ILE:HD13	1:B:35:VAL:HG22	1.94	0.48
1:C:19:LEU:HD21	1:C:48:VAL:HG11	1.96	0.48
1:B:187:ASN:ND2	1:B:188:VAL:CG2	2.64	0.47
1:B:123:VAL:HG12	1:B:123:VAL:O	2.13	0.47
1:C:52:LEU:HD22	1:C:244:MET:CE	2.45	0.47
1:A:109:GLU:OE1	1:B:193:GLU:OE2	2.32	0.47
1:B:29:ASP:OD1	1:B:123:VAL:HG21	2.11	0.47
1:C:107:ASN:O	1:C:108:GLN:HG2	2.14	0.47
1:A:101:LEU:HD12	1:A:101:LEU:N	2.30	0.47
1:A:123:VAL:HG13	1:A:124:GLU:H	1.79	0.47
1:A:254:LYS:O	1:A:255:ILE:C	2.53	0.47

Continued on next page...

Continued from previous page...

Atom-1	Atom-2	Interatomic distance (Å)	Clash overlap (Å)
1:A:175:LEU:C	1:A:175:LEU:HD12	2.35	0.47
1:C:185:THR:CB	1:C:188:VAL:CG2	2.93	0.46
1:A:241:ILE:HG22	1:A:241:ILE:O	2.14	0.46
1:A:219:THR:HB	1:A:220:PRO:HD3	1.97	0.46
1:B:82:ALA:HB2	1:B:103:PHE:CD2	2.51	0.46
1:C:25:GLU:OE2	1:C:119:MET:SD	2.74	0.46
1:C:128:ILE:HG12	1:C:129:PRO:HD2	1.98	0.46
1:A:229:MET:HG3	1:A:235:LEU:HD13	1.98	0.46
1:B:8:GLN:HA	2:B:2002:HOH:O	2.16	0.46
1:B:19:LEU:CD2	1:B:48:VAL:HG11	2.46	0.46
1:B:125:GLN:O	1:B:126:LEU:CB	2.58	0.46
1:A:205:LEU:HB2	1:A:207:PHE:CE2	2.50	0.45
1:A:246:HIS:HD2	1:A:246:HIS:O	1.99	0.45
1:A:203:VAL:CG1	1:A:205:LEU:HD11	2.46	0.45
1:C:107:ASN:ND2	1:C:109:GLU:H	2.15	0.45
1:C:219:THR:HB	1:C:220:PRO:HD3	1.98	0.45
1:A:255:ILE:O	1:A:255:ILE:HG22	2.15	0.45
1:C:37:LEU:HD23	1:C:38:GLN:N	2.32	0.45
1:B:53:ARG:NH1	1:B:243:ASP:O	2.50	0.45
1:B:11:ILE:HD13	1:B:244:MET:CE	2.46	0.45
1:A:128:ILE:HG13	1:A:129:PRO:HD2	2.00	0.45
1:A:174:GLU:O	1:C:117:LYS:HD2	2.17	0.44
1:A:246:HIS:C	1:A:246:HIS:CD2	2.90	0.44
1:A:70:VAL:HG13	1:A:116:MET:CE	2.47	0.44
1:C:25:GLU:CG	1:C:119:MET:SD	3.04	0.44
1:C:131:GLN:HE22	1:C:233:VAL:HG21	1.83	0.44
1:C:126:LEU:HG	1:C:128:ILE:N	2.30	0.44
1:A:111:VAL:HG22	2:A:2018:HOH:O	2.16	0.44
1:C:19:LEU:CD2	1:C:48:VAL:HG11	2.48	0.44
1:A:37:LEU:HD23	1:A:38:GLN:CA	2.45	0.44
1:C:47:LEU:HB3	1:C:250:TYR:HB2	2.00	0.44
1:A:203:VAL:HG12	1:A:205:LEU:HG	1.98	0.44
1:B:226:THR:HG23	2:B:2038:HOH:O	2.17	0.44
1:A:241:ILE:O	1:A:242:ALA:C	2.55	0.44
1:B:88:ILE:HD13	1:B:103:PHE:CD1	2.53	0.43
1:C:105:ALA:HB1	1:C:106:PRO:HD2	2.00	0.43
1:C:135:CYS:SG	1:C:162:CYS:HB2	2.58	0.43
1:C:215:PHE:N	1:C:215:PHE:CD1	2.83	0.43
1:A:61:ARG:NH2	1:A:63:ASP:OD2	2.51	0.43
1:C:37:LEU:HD23	1:C:37:LEU:C	2.38	0.43
1:B:244:MET:N	2:B:2044:HOH:O	2.50	0.43

Continued on next page...

Continued from previous page...

Atom-1	Atom-2	Interatomic distance (Å)	Clash overlap (Å)
1:B:219:THR:HB	1:B:220:PRO:HD3	2.00	0.43
1:A:97:ASP:O	1:A:117:LYS:O	2.37	0.43
1:B:51:THR:O	1:B:245:GLY:HA3	2.18	0.43
1:A:255:ILE:O	1:A:255:ILE:CG2	2.65	0.43
1:B:3:GLU:OE2	1:B:91:ARG:NH1	2.51	0.43
1:A:28:TRP:CZ3	1:A:35:VAL:HG11	2.54	0.42
1:B:127:GLY:O	1:B:128:ILE:C	2.58	0.42
1:A:185:THR:CG2	1:C:109:GLU:HG2	2.48	0.42
1:B:23:ILE:HG13	1:B:24:ASN:N	2.35	0.42
1:B:12:LEU:HD12	1:B:12:LEU:HA	1.84	0.42
1:B:88:ILE:HA	1:B:102:VAL:O	2.19	0.42
1:B:95:ASN:O	1:B:96:ALA:C	2.57	0.42
1:C:131:GLN:HE22	1:C:233:VAL:HG11	1.85	0.42
1:A:163:ALA:HA	1:A:199:MET:HE2	2.01	0.41
1:B:93:GLU:O	1:B:94:ASP:CG	2.59	0.41
1:C:1:MET:SD	1:C:3:GLU:HB2	2.60	0.41
1:B:130:GLU:C	1:B:131:GLN:HG2	2.41	0.41
1:C:23:ILE:HG12	1:C:72:LEU:HD12	2.03	0.41
1:B:23:ILE:HG12	1:B:72:LEU:HD12	2.02	0.41
1:B:53:ARG:NH2	1:B:243:ASP:O	2.54	0.41
1:B:194:ALA:O	1:B:196:THR:CG2	2.68	0.41
1:B:194:ALA:O	1:B:196:THR:HG23	2.21	0.41
1:C:168:LYS:CE	1:C:170:SER:OG	2.69	0.41
1:C:30:ILE:HD13	1:C:35:VAL:HG13	2.02	0.41
1:C:224:THR:HG22	2:C:2044:HOH:O	2.21	0.41
1:C:11:ILE:HG21	1:C:244:MET:CE	2.49	0.40
1:A:151:LEU:HD23	1:A:151:LEU:HA	1.94	0.40
1:B:93:GLU:O	1:B:94:ASP:OD2	2.39	0.40

There are no symmetry-related clashes.

5.3 Torsion angles [i](#)

5.3.1 Protein backbone [i](#)

In the following table, the Percentiles column shows the percent Ramachandran outliers of the chain as a percentile score with respect to all PDB entries followed by that with respect to all EM entries.

The Analysed column shows the number of residues for which the backbone conformation was analysed, and the total number of residues.

Mol	Chain	Analysed	Favoured	Allowed	Outliers	Percentiles	
1	A	254/261 (97%)	223 (88%)	20 (8%)	11 (4%)	2	17
1	B	254/261 (97%)	229 (90%)	17 (7%)	8 (3%)	3	22
1	C	254/261 (97%)	238 (94%)	13 (5%)	3 (1%)	11	44
All	All	762/783 (97%)	690 (91%)	50 (7%)	22 (3%)	6	23

All (22) Ramachandran outliers are listed below:

Mol	Chain	Res	Type
1	A	43	SER
1	A	108	GLN
1	A	118	LEU
1	A	187	ASN
1	A	188	VAL
1	A	189	ASP
1	A	255	ILE
1	B	94	ASP
1	B	95	ASN
1	B	98	THR
1	B	243	ASP
1	C	190	LYS
1	C	255	ILE
1	B	126	LEU
1	B	186	SER
1	B	195	VAL
1	C	191	GLU
1	A	128	ILE
1	A	125	GLN
1	A	242	ALA
1	B	96	ALA
1	A	117	LYS

5.3.2 Protein sidechains ⓘ

In the following table, the Percentiles column shows the percent sidechain outliers of the chain as a percentile score with respect to all PDB entries followed by that with respect to all EM entries.

The Analysed column shows the number of residues for which the sidechain conformation was analysed, and the total number of residues.

Mol	Chain	Analysed	Rotameric	Outliers	Percentiles	
1	A	223/228 (98%)	195 (87%)	28 (13%)	3	14

Continued on next page...

Continued from previous page...

Mol	Chain	Analysed	Rotameric	Outliers	Percentiles	
1	B	223/228 (98%)	189 (85%)	34 (15%)	2	11
1	C	223/228 (98%)	195 (87%)	28 (13%)	3	14
All	All	669/684 (98%)	579 (86%)	90 (14%)	5	13

All (90) residues with a non-rotameric sidechain are listed below:

Mol	Chain	Res	Type
1	A	29	ASP
1	A	42	SER
1	A	43	SER
1	A	47	LEU
1	A	58	ASP
1	A	61	ARG
1	A	79	LEU
1	A	80	LYS
1	A	87	ILE
1	A	107	ASN
1	A	109	GLU
1	A	124	GLU
1	A	131	GLN
1	A	146	ARG
1	A	164	LYS
1	A	170	SER
1	A	172	SER
1	A	179	ASN
1	A	184	GLN
1	A	187	ASN
1	A	190	LYS
1	A	191	GLU
1	A	192	GLU
1	A	230	SER
1	A	240	LYS
1	A	244	MET
1	A	246	HIS
1	A	255	ILE
1	B	1	MET
1	B	7	VAL
1	B	22	LEU
1	B	23	ILE
1	B	64	ARG
1	B	88	ILE

Continued on next page...

Continued from previous page...

Mol	Chain	Res	Type
1	B	93	GLU
1	B	107	ASN
1	B	108	GLN
1	B	109	GLU
1	B	119	MET
1	B	123	VAL
1	B	125	GLN
1	B	128	ILE
1	B	131	GLN
1	B	138	LYS
1	B	146	ARG
1	B	164	LYS
1	B	174	GLU
1	B	175	LEU
1	B	179	ASN
1	B	187	ASN
1	B	190	LYS
1	B	191	GLU
1	B	192	GLU
1	B	193	GLU
1	B	197	ILE
1	B	203	VAL
1	B	204	GLN
1	B	224	THR
1	B	233	VAL
1	B	240	LYS
1	B	254	LYS
1	B	255	ILE
1	C	23	ILE
1	C	36	ASN
1	C	59	THR
1	C	77	LYS
1	C	97	ASP
1	C	107	ASN
1	C	108	GLN
1	C	119	MET
1	C	121	LEU
1	C	128	ILE
1	C	131	GLN
1	C	146	ARG
1	C	149	ARG
1	C	165	ASP

Continued on next page...

Continued from previous page...

Mol	Chain	Res	Type
1	C	168	LYS
1	C	170	SER
1	C	172	SER
1	C	179	ASN
1	C	181	LYS
1	C	182	LEU
1	C	189	ASP
1	C	190	LYS
1	C	199	MET
1	C	201	GLU
1	C	230	SER
1	C	240	LYS
1	C	244	MET
1	C	255	ILE

Sometimes sidechains can be flipped to improve hydrogen bonding and reduce clashes. All (9) such sidechains are listed below:

Mol	Chain	Res	Type
1	A	184	GLN
1	A	246	HIS
1	B	65	ASN
1	B	108	GLN
1	B	187	ASN
1	C	49	GLN
1	C	107	ASN
1	C	108	GLN
1	C	131	GLN

5.3.3 RNA [i](#)

There are no RNA molecules in this entry.

5.4 Non-standard residues in protein, DNA, RNA chains [i](#)

There are no non-standard protein/DNA/RNA residues in this entry.

5.5 Carbohydrates [i](#)

There are no oligosaccharides in this entry.

5.6 Ligand geometry [i](#)

There are no ligands in this entry.

5.7 Other polymers [i](#)

There are no such residues in this entry.

5.8 Polymer linkage issues [i](#)

There are no chain breaks in this entry.

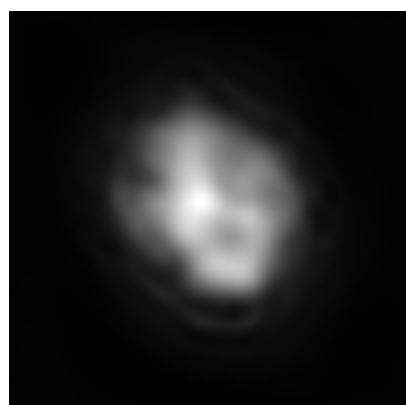
6 Map visualisation [i](#)

This section contains visualisations of the EMDB entry EMD-6339. These allow visual inspection of the internal detail of the map and identification of artifacts.

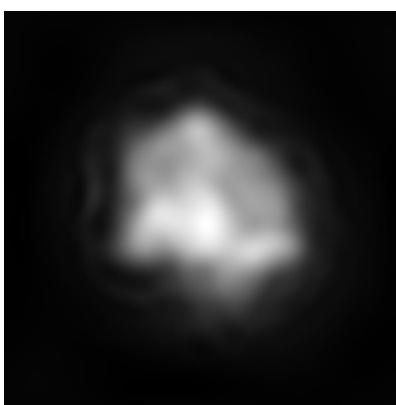
No raw map or half-maps were deposited for this entry and therefore no images, graphs, etc. pertaining to the raw map can be shown.

6.1 Orthogonal projections [i](#)

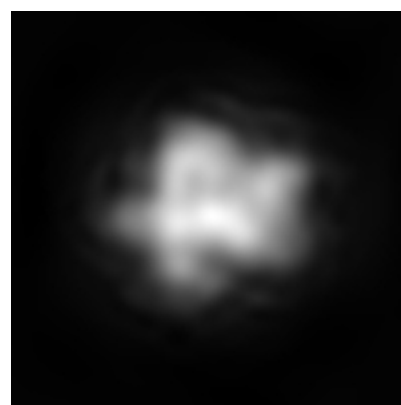
6.1.1 Primary map



X



Y

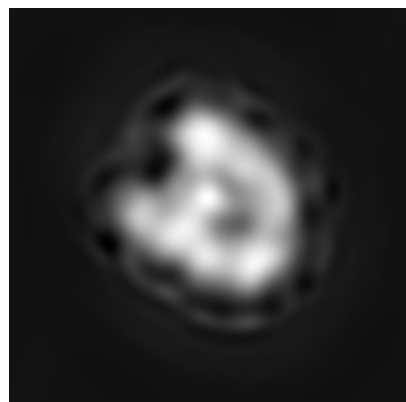


Z

The images above show the map projected in three orthogonal directions.

6.2 Central slices [i](#)

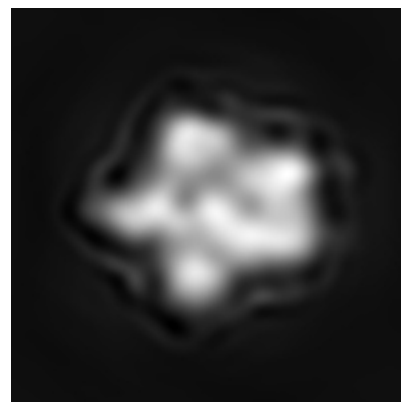
6.2.1 Primary map



X Index: 52



Y Index: 52

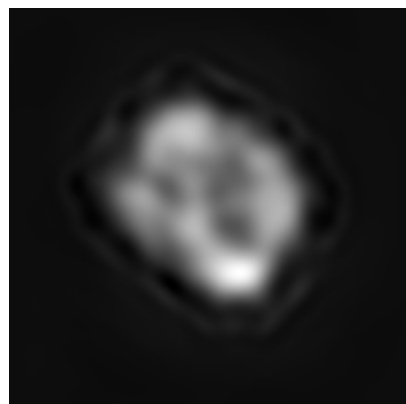


Z Index: 52

The images above show central slices of the map in three orthogonal directions.

6.3 Largest variance slices [i](#)

6.3.1 Primary map



X Index: 44



Y Index: 50

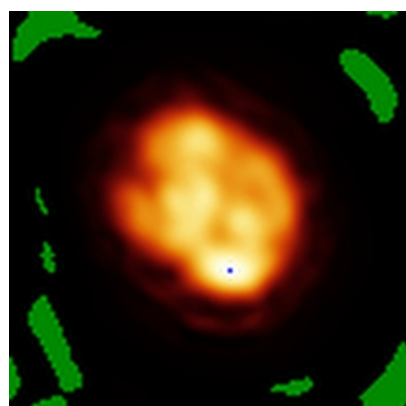


Z Index: 51

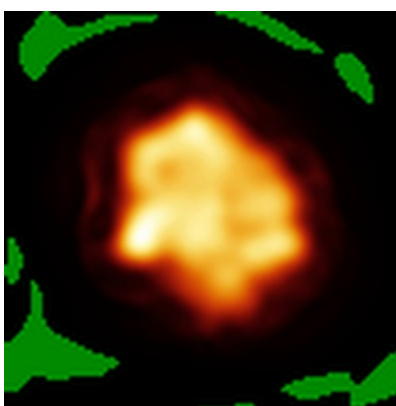
The images above show the largest variance slices of the map in three orthogonal directions.

6.4 Orthogonal standard-deviation projections (False-color) [i](#)

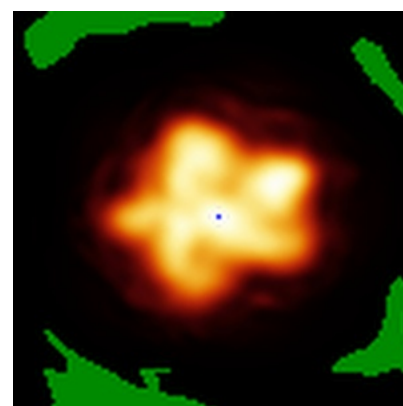
6.4.1 Primary map



X



Y

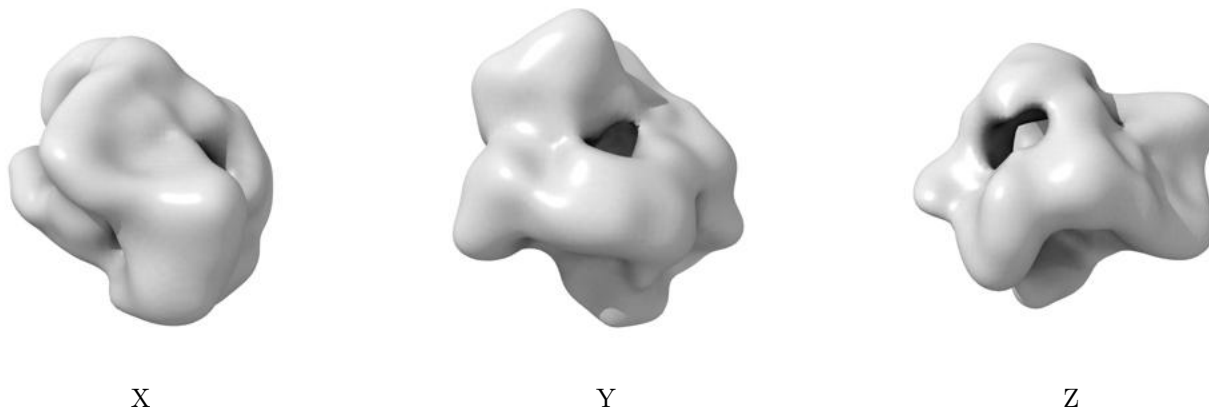


Z

The images above show the map standard deviation projections with false color in three orthogonal directions. Minimum values are shown in green, max in blue, and dark to light orange shades represent small to large values respectively.

6.5 Orthogonal surface views [i](#)

6.5.1 Primary map



The images above show the 3D surface view of the map at the recommended contour level 1.27. These images, in conjunction with the slice images, may facilitate assessment of whether an appropriate contour level has been provided.

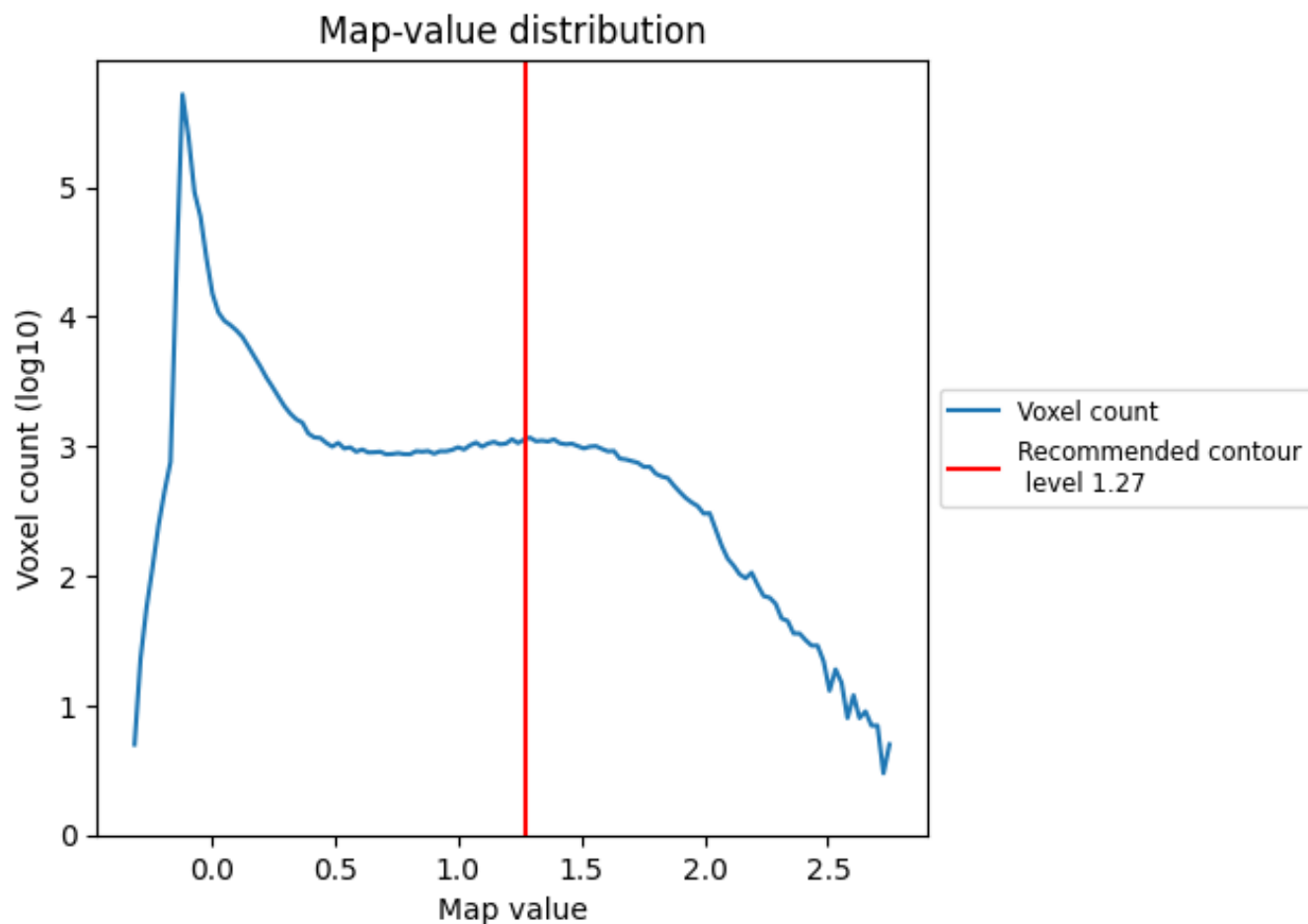
6.6 Mask visualisation [i](#)

This section was not generated. No masks/segmentation were deposited.

7 Map analysis [i](#)

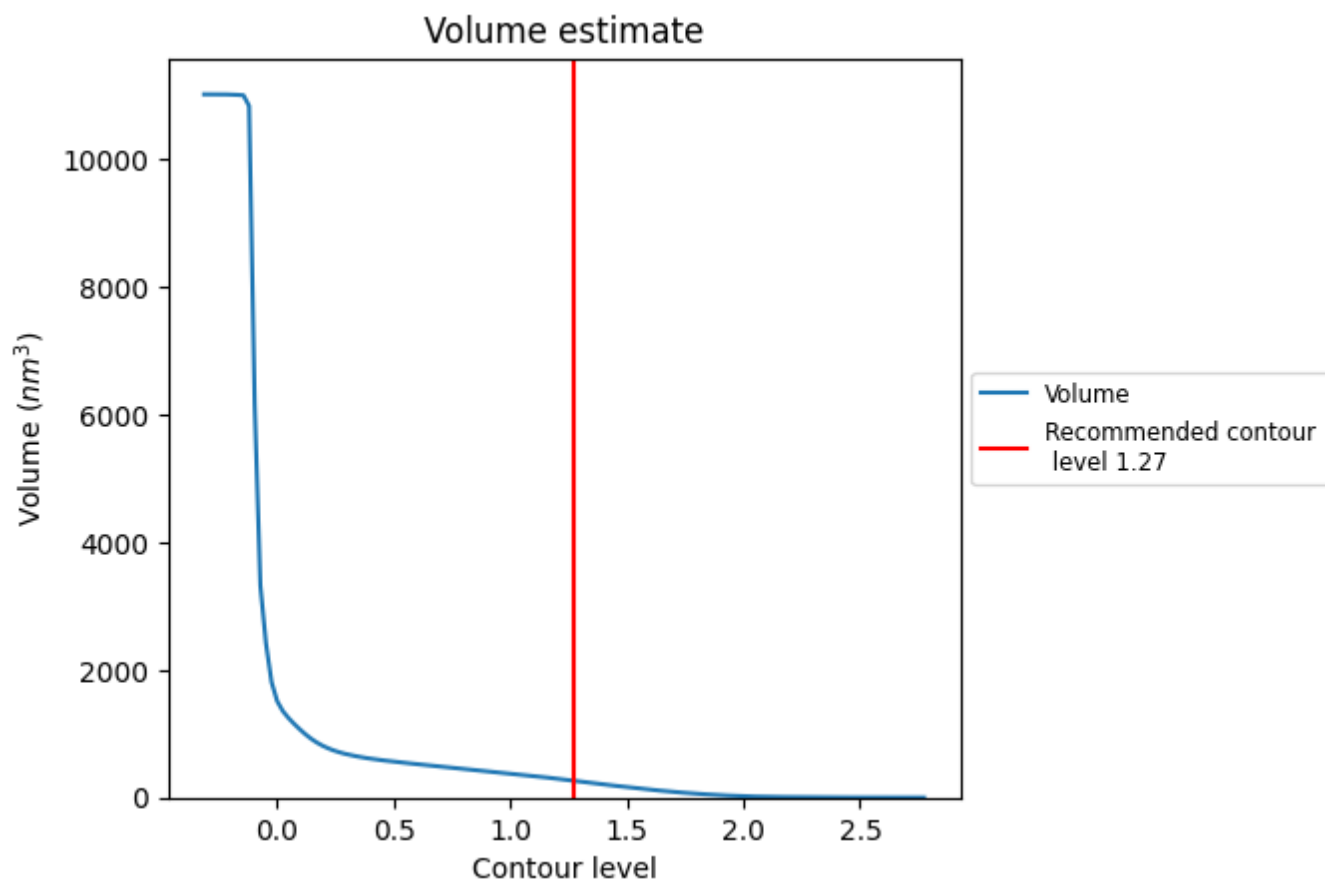
This section contains the results of statistical analysis of the map.

7.1 Map-value distribution [i](#)



The map-value distribution is plotted in 128 intervals along the x-axis. The y-axis is logarithmic. A spike in this graph at zero usually indicates that the volume has been masked.

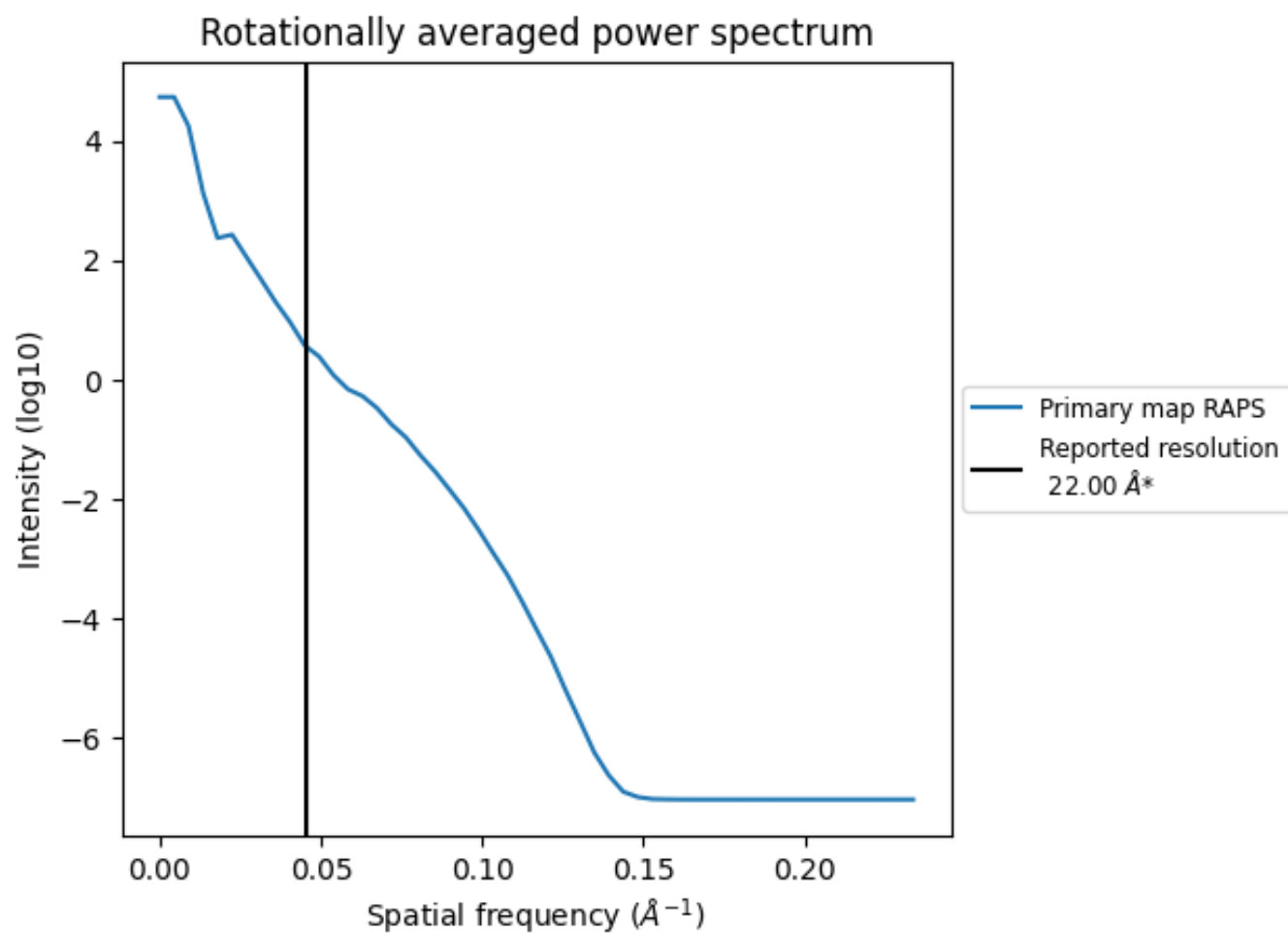
7.2 Volume estimate [i](#)



The volume at the recommended contour level is 265 nm³; this corresponds to an approximate mass of 240 kDa.

The volume estimate graph shows how the enclosed volume varies with the contour level. The recommended contour level is shown as a vertical line and the intersection between the line and the curve gives the volume of the enclosed surface at the given level.

7.3 Rotationally averaged power spectrum ⓘ



*Reported resolution corresponds to spatial frequency of 0.045 Å⁻¹

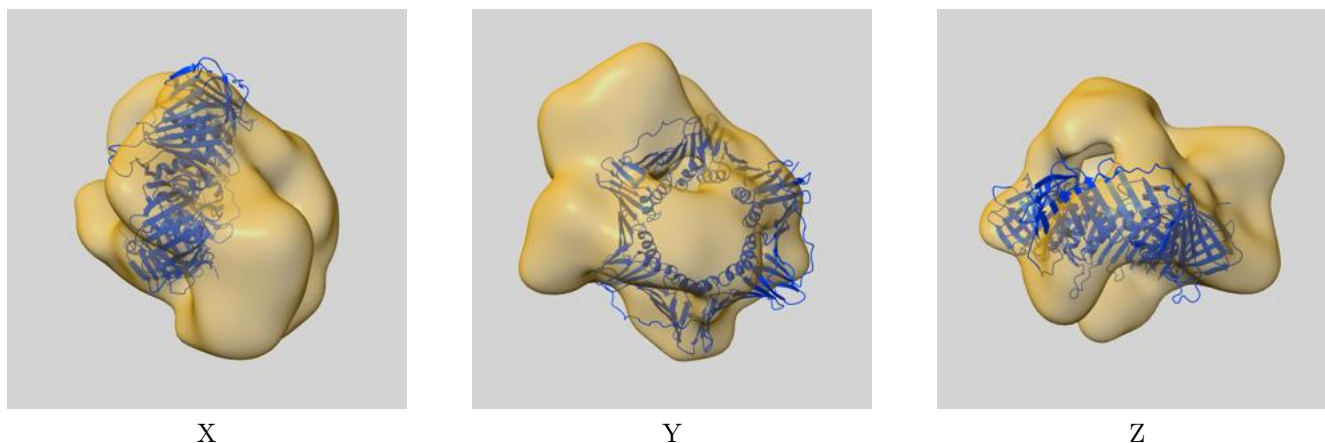
8 Fourier-Shell correlation

This section was not generated. No FSC curve or half-maps provided.

9 Map-model fit [i](#)

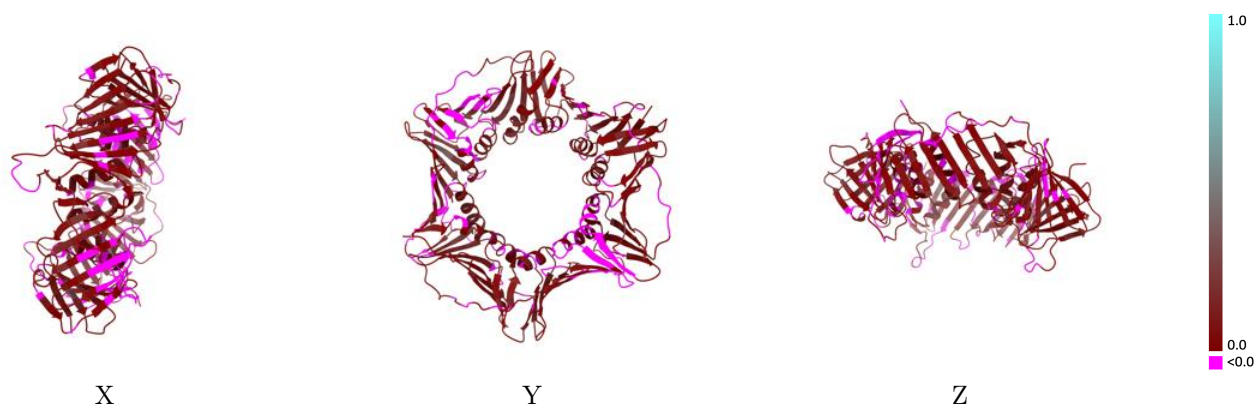
This section contains information regarding the fit between EMDB map EMD-6339 and PDB model 3JA9. Per-residue inclusion information can be found in [section 3](#) on [page 4](#).

9.1 Map-model overlay [i](#)



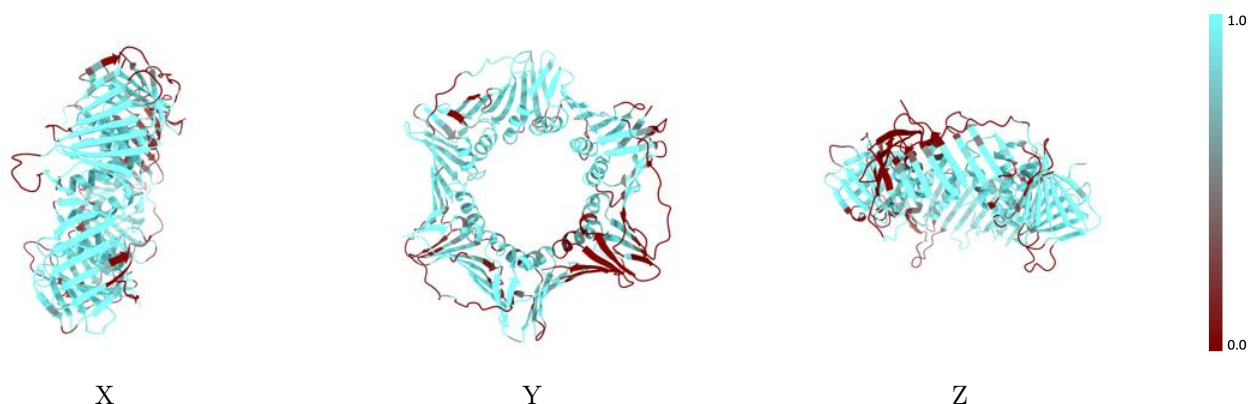
The images above show the 3D surface view of the map at the recommended contour level 1.27 at 50% transparency in yellow overlaid with a ribbon representation of the model coloured in blue. These images allow for the visual assessment of the quality of fit between the atomic model and the map.

9.2 Q-score mapped to coordinate model [i](#)



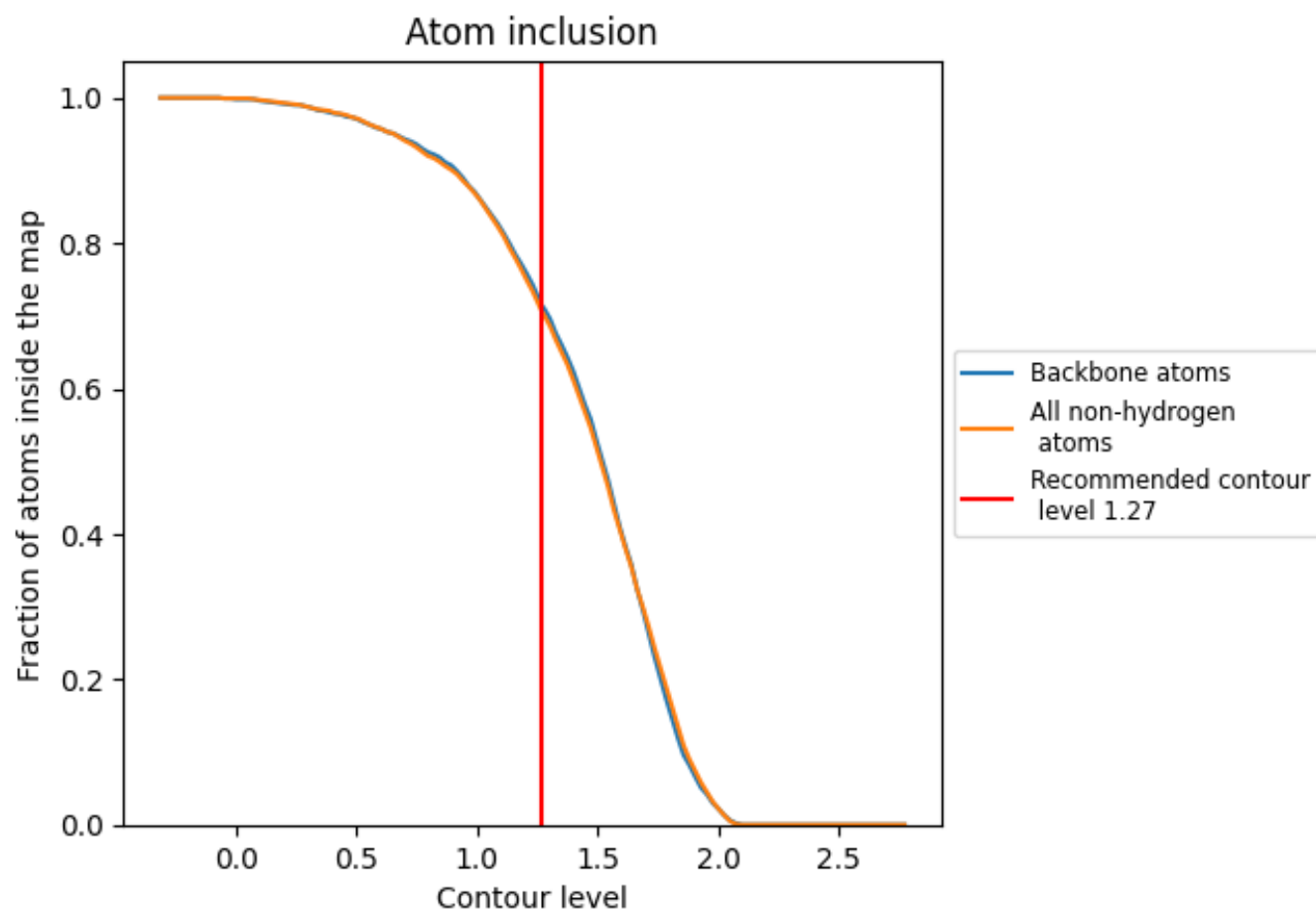
The images above show the model with each residue coloured according to its Q-score. This shows their resolvability in the map with higher Q-score values reflecting better resolvability. Please note: Q-score is calculating the resolvability of atoms, and thus high values are only expected at resolutions at which atoms can be resolved. Low Q-score values may therefore be expected for many entries.

9.3 Atom inclusion mapped to coordinate model [i](#)



The images above show the model with each residue coloured according to its atom inclusion. This shows to what extent they are inside the map at the recommended contour level (1.27).

9.4 Atom inclusion [i](#)



At the recommended contour level, 71% of all backbone atoms, 71% of all non-hydrogen atoms, are inside the map.

9.5 Map-model fit summary ⓘ

The table lists the average atom inclusion at the recommended contour level (1.27) and Q-score for the entire model and for each chain.

Chain	Atom inclusion	Q-score
All	<div></div> 0.7060	<div></div> 0.0450
A	<div></div> 0.6970	<div></div> 0.0500
B	<div></div> 0.5530	<div></div> 0.0430
C	<div></div> 0.8690	<div></div> 0.0430

