



Full wwPDB EM Validation Report ⓘ

Oct 23, 2024 – 12:02 AM EDT

PDB ID : 3J1S
EMDB ID : EMD-5424
Title : Structure of adeno-associated virus-2 in complex with neutralizing monoclonal antibody A20
Authors : Chapman, M.S.; McCraw, D.M.
Deposited on : 2012-05-23
Resolution : 8.50 Å(reported)
Based on initial model : 1LP3

This is a Full wwPDB EM Validation Report for a publicly released PDB entry.

We welcome your comments at validation@mail.wwpdb.org

A user guide is available at

<https://www.wwpdb.org/validation/2017/EMValidationReportHelp>
with specific help available everywhere you see the ⓘ symbol.

The types of validation reports are described at

<http://www.wwpdb.org/validation/2017/FAQs#types>.

The following versions of software and data (see [references ⓘ](#)) were used in the production of this report:

EMDB validation analysis : 0.0.1.dev113
MolProbity : 4.02b-467
Percentile statistics : 20231227.v01 (using entries in the PDB archive December 27th 2023)
MapQ : 1.9.13
Ideal geometry (proteins) : Engh & Huber (2001)
Ideal geometry (DNA, RNA) : Parkinson et al. (1996)
Validation Pipeline (wwPDB-VP) : 2.39

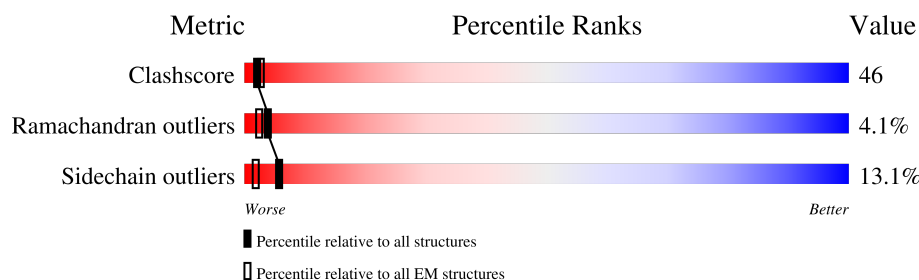
1 Overall quality at a glance

The following experimental techniques were used to determine the structure:

ELECTRON MICROSCOPY

The reported resolution of this entry is 8.50 Å.

Percentile scores (ranging between 0-100) for global validation metrics of the entry are shown in the following graphic. The table shows the number of entries on which the scores are based.



Metric	Whole archive (#Entries)	EM structures (#Entries)
Clashscore	210492	15764
Ramachandran outliers	207382	16835
Sidechain outliers	206894	16415

The table below summarises the geometric issues observed across the polymeric chains and their fit to the map. The red, orange, yellow and green segments of the bar indicate the fraction of residues that contain outliers for ≥ 3 , 2, 1 and 0 types of geometric quality criteria respectively. A grey segment represents the fraction of residues that are not modelled. The numeric value for each fraction is indicated below the corresponding segment, with a dot representing fractions $\leq 5\%$. The upper red bar (where present) indicates the fraction of residues that have poor fit to the EM map (all-atom inclusion $< 40\%$). The numeric value is given above the bar.

Mol	Chain	Length	Quality of chain
1	L	214	<div> <div>6%</div> <div>55%</div> <div>41%</div> <div>.</div> </div>
2	H	218	<div> <div>.</div> <div>56%</div> <div>38%</div> <div>6%</div> </div>
3	A	519	<div> <div>8%</div> <div>37%</div> <div>47%</div> <div>15%</div> <div>.</div> </div>

2 Entry composition

There are 3 unique types of molecules in this entry. The entry contains 7485 atoms, of which 0 are hydrogens and 0 are deuteriums.

In the tables below, the AltConf column contains the number of residues with at least one atom in alternate conformation and the Trace column contains the number of residues modelled with at most 2 atoms.

- Molecule 1 is a protein called A20 light chain.

Mol	Chain	Residues	Atoms					AltConf	Trace
1	L	214	Total	C	N	O	S	0	0
			1657	1028	281	341	7		

- Molecule 2 is a protein called A20 heavy chain.

Mol	Chain	Residues	Atoms					AltConf	Trace
2	H	218	Total	C	N	O	S	0	0
			1676	1063	270	336	7		

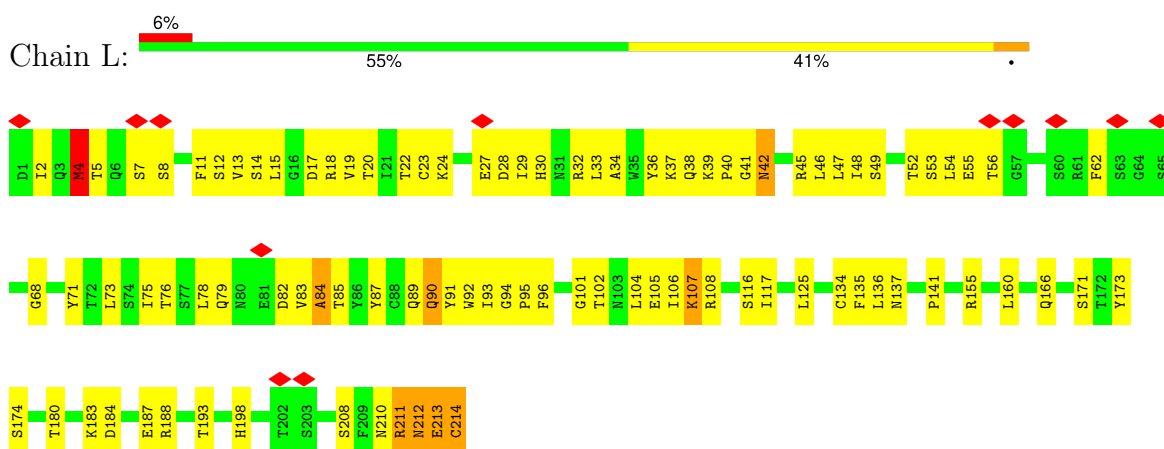
- Molecule 3 is a protein called Capsid protein VP1.

Mol	Chain	Residues	Atoms					AltConf	Trace
3	A	519	Total	C	N	O	S	0	0
			4152	2612	725	802	13		

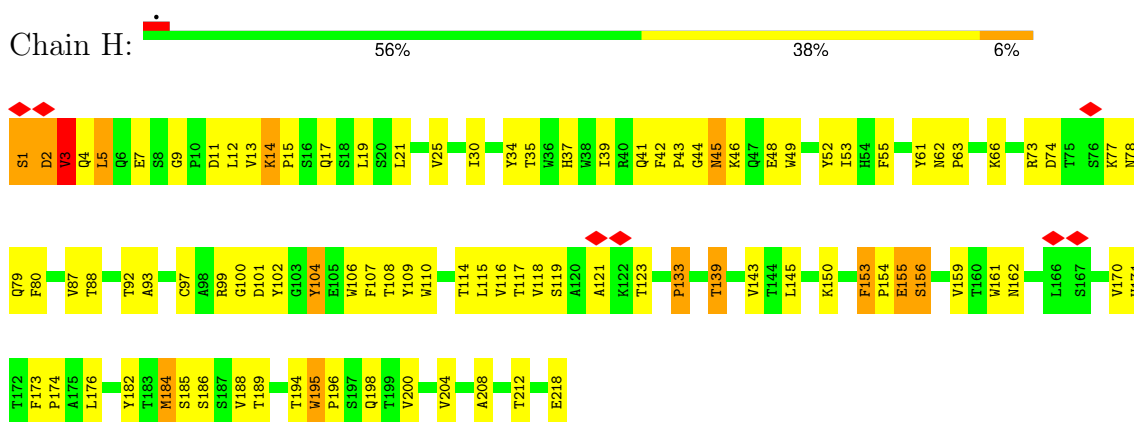
3 Residue-property plots

These plots are drawn for all protein, RNA, DNA and oligosaccharide chains in the entry. The first graphic for a chain summarises the proportions of the various outlier classes displayed in the second graphic. The second graphic shows the sequence view annotated by issues in geometry and atom inclusion in map density. Residues are color-coded according to the number of geometric quality criteria for which they contain at least one outlier: green = 0, yellow = 1, orange = 2 and red = 3 or more. A red diamond above a residue indicates a poor fit to the EM map for this residue (all-atom inclusion < 40%). Stretches of 2 or more consecutive residues without any outlier are shown as a green connector. Residues present in the sample, but not in the model, are shown in grey.

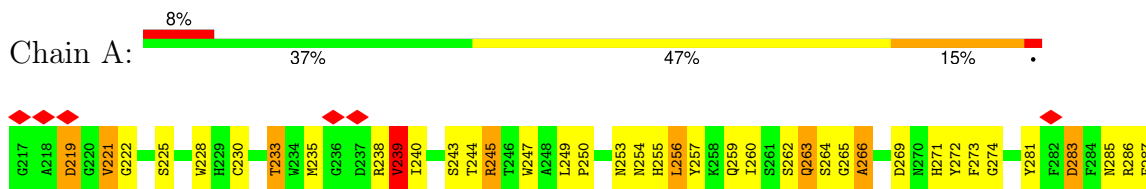
• Molecule 1: A20 light chain

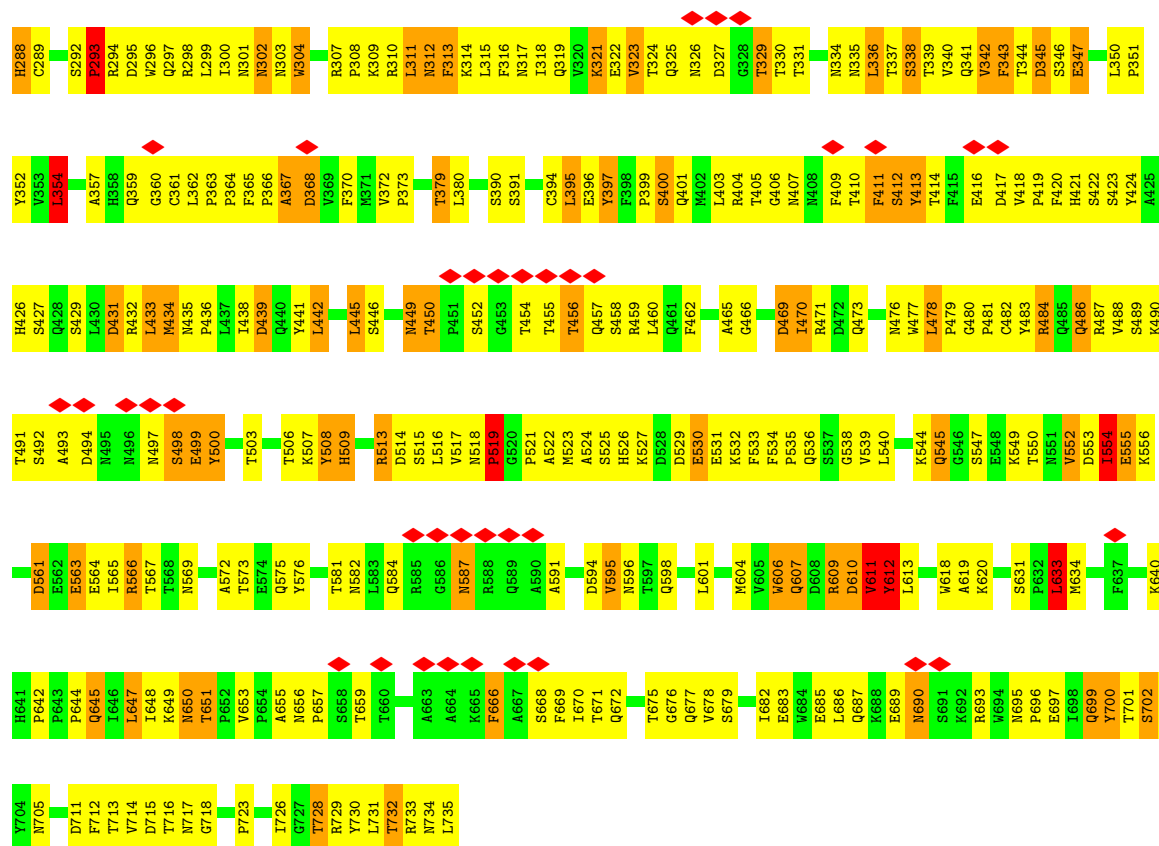


• Molecule 2: A20 heavy chain



• Molecule 3: Capsid protein VP1





4 Experimental information

Property	Value	Source
EM reconstruction method	SINGLE PARTICLE	Depositor
Imposed symmetry	POINT, I	Depositor
Number of particles used	11898	Depositor
Resolution determination method	FSC 0.5 CUT-OFF	Depositor
CTF correction method	Whole image	Depositor
Microscope	FEI TITAN KRIOS	Depositor
Voltage (kV)	120	Depositor
Electron dose ($e^-/\text{\AA}^2$)	15	Depositor
Minimum defocus (nm)	-500	Depositor
Maximum defocus (nm)	-4000	Depositor
Magnification	39775	Depositor
Image detector	GENERIC GATAN	Depositor
Maximum map value	9.860	Depositor
Minimum map value	-8.442	Depositor
Average map value	0.011	Depositor
Map value standard deviation	0.998	Depositor
Recommended contour level	1.34	Depositor
Map size (\AA)	588.0, 588.0, 588.0	wwPDB
Map dimensions	240, 240, 240	wwPDB
Map angles ($^\circ$)	90.0, 90.0, 90.0	wwPDB
Pixel spacing (\AA)	2.45, 2.45, 2.45	Depositor

5 Model quality

5.1 Standard geometry

The Z score for a bond length (or angle) is the number of standard deviations the observed value is removed from the expected value. A bond length (or angle) with $|Z| > 5$ is considered an outlier worth inspection. RMSZ is the root-mean-square of all Z scores of the bond lengths (or angles).

Mol	Chain	Bond lengths		Bond angles	
		RMSZ	# Z >5	RMSZ	# Z >5
1	L	0.85	3/1692 (0.2%)	0.96	4/2295 (0.2%)
2	H	0.95	8/1726 (0.5%)	1.18	11/2364 (0.5%)
3	A	0.94	3/4275 (0.1%)	1.06	7/5827 (0.1%)
All	All	0.92	14/7693 (0.2%)	1.07	22/10486 (0.2%)

Chiral center outliers are detected by calculating the chiral volume of a chiral center and verifying if the center is modelled as a planar moiety or with the opposite hand. A planarity outlier is detected by checking planarity of atoms in a peptide group, atoms in a mainchain group or atoms of a sidechain that are expected to be planar.

Mol	Chain	#Chirality outliers	#Planarity outliers
1	L	0	2
3	A	0	3
All	All	0	5

All (14) bond length outliers are listed below:

Mol	Chain	Res	Type	Atoms	Z	Observed(Å)	Ideal(Å)
1	L	213	GLU	C-N	14.56	1.67	1.34
2	H	133	PRO	C-N	14.54	1.59	1.33
1	L	211	ARG	C-N	-8.26	1.15	1.34
1	L	212	ASN	C-N	-7.96	1.15	1.34
2	H	2	ASP	N-CA	7.54	1.61	1.46
2	H	1	SER	C-N	7.39	1.51	1.34
2	H	2	ASP	C-N	6.67	1.49	1.34
2	H	2	ASP	CA-C	6.62	1.70	1.52
2	H	3	VAL	N-CA	6.62	1.59	1.46
3	A	606	TRP	CB-CG	-5.94	1.39	1.50
3	A	700	TYR	CD2-CE2	5.54	1.47	1.39
2	H	1	SER	CA-C	5.34	1.66	1.52
3	A	483	TYR	CD1-CE1	5.30	1.47	1.39
2	H	1	SER	N-CA	5.21	1.56	1.46

All (22) bond angle outliers are listed below:

Mol	Chain	Res	Type	Atoms	Z	Observed(°)	Ideal(°)
2	H	133	PRO	O-C-N	15.73	149.94	123.20
2	H	133	PRO	CA-C-N	-13.60	89.01	116.20
1	L	211	ARG	O-C-N	-10.85	105.34	122.70
3	A	633	LEU	CA-CB-CG	-8.48	95.79	115.30
1	L	4	MET	CG-SD-CE	-6.52	89.76	100.20
2	H	133	PRO	C-N-CA	-6.17	109.35	122.30
2	H	2	ASP	C-N-CA	5.96	136.60	121.70
3	A	342	VAL	CB-CA-C	-5.95	100.10	111.40
2	H	1	SER	CA-C-N	5.89	130.16	117.20
2	H	2	ASP	N-CA-C	5.82	126.72	111.00
3	A	611	VAL	N-CA-C	5.77	126.58	111.00
3	A	647	LEU	CA-CB-CG	-5.76	102.05	115.30
1	L	211	ARG	CA-C-N	5.72	129.79	117.20
2	H	3	VAL	CB-CA-C	-5.54	100.88	111.40
2	H	1	SER	CA-C-O	-5.49	108.57	120.10
2	H	1	SER	C-N-CA	5.31	134.97	121.70
3	A	490	LYS	CD-CE-NZ	5.27	123.82	111.70
1	L	212	ASN	O-C-N	-5.23	114.33	122.70
2	H	1	SER	N-CA-CB	-5.18	102.73	110.50
2	H	104	TYR	CA-CB-CG	-5.09	103.73	113.40
3	A	519	PRO	CA-N-CD	-5.05	104.43	111.50
3	A	539	VAL	CB-CA-C	-5.04	101.83	111.40

There are no chirality outliers.

All (5) planarity outliers are listed below:

Mol	Chain	Res	Type	Group
3	A	413	TYR	Sidechain
3	A	612	TYR	Sidechain
3	A	730	TYR	Sidechain
1	L	211	ARG	Mainchain
1	L	212	ASN	Mainchain

5.2 Too-close contacts

In the following table, the Non-H and H(model) columns list the number of non-hydrogen atoms and hydrogen atoms in the chain respectively. The H(added) column lists the number of hydrogen atoms added and optimized by MolProbity. The Clashes column lists the number of clashes within the asymmetric unit, whereas Symm-Clashes lists symmetry-related clashes.

Mol	Chain	Non-H	H(model)	H(added)	Clashes	Symm-Clashes
1	L	1657	0	1581	145	0
2	H	1676	0	1594	161	0
3	A	4152	0	3904	385	0
All	All	7485	0	7079	674	0

The all-atom clashscore is defined as the number of clashes found per 1000 atoms (including hydrogen atoms). The all-atom clashscore for this structure is 46.

All (674) close contacts within the same asymmetric unit are listed below, sorted by their clash magnitude.

Atom-1	Atom-2	Interatomic distance (Å)	Clash overlap (Å)
1:L:213:GLU:C	1:L:214:CYS:N	1.67	1.45
1:L:107:LYS:CE	1:L:108:ARG:HB3	1.66	1.25
2:H:5:LEU:HD22	2:H:25:VAL:HG12	1.18	1.16
1:L:107:LYS:HE2	1:L:108:ARG:CB	1.76	1.15
2:H:139:THR:CG2	2:H:143:VAL:HG12	1.77	1.14
2:H:61:TYR:HB2	2:H:66:LYS:HD3	1.20	1.06
2:H:139:THR:HG21	2:H:143:VAL:HG12	1.06	1.06
2:H:35:THR:HG21	2:H:106:TRP:CH2	1.92	1.03
1:L:107:LYS:NZ	1:L:108:ARG:HG2	1.74	1.02
2:H:170:VAL:HG22	2:H:188:VAL:HG22	1.40	1.02
3:A:484:ARG:NH1	3:A:575:GLN:H	1.56	1.02
2:H:139:THR:HG21	2:H:143:VAL:CG1	1.90	1.01
3:A:341:GLN:HE22	3:A:651:THR:HG23	1.29	0.98
3:A:509:HIS:HB3	3:A:514:ASP:OD1	1.64	0.97
3:A:513:ARG:HG2	3:A:513:ARG:HH11	1.28	0.96
2:H:37:HIS:NE2	2:H:106:TRP:CZ3	2.33	0.95
3:A:689:GLU:HG2	3:A:690:ASN:H	1.31	0.94
3:A:335:ASN:ND2	3:A:338:SER:HB2	1.83	0.94
2:H:35:THR:HG21	2:H:106:TRP:HH2	1.27	0.94
1:L:4:MET:HE2	1:L:90:GLN:HB2	1.48	0.93
1:L:107:LYS:HE2	1:L:108:ARG:HB3	0.94	0.90
1:L:39:LYS:HB2	2:H:1:SER:CB	2.01	0.90
1:L:15:LEU:HD12	1:L:79:GLN:HA	1.53	0.90
1:L:15:LEU:CD1	1:L:79:GLN:HA	2.02	0.89
3:A:432:ARG:HA	3:A:434:MET:HE1	1.55	0.89
1:L:75:ILE:HG21	1:L:78:LEU:HD23	1.54	0.89
1:L:107:LYS:HZ2	1:L:107:LYS:HA	1.37	0.89
3:A:316:PHE:HD1	3:A:317:ASN:HD22	1.18	0.89
3:A:403:LEU:HD23	3:A:407:ASN:HB3	1.54	0.89
3:A:582:ASN:H	3:A:591:ALA:HB3	1.37	0.88
1:L:83:VAL:HG12	1:L:106:ILE:H	1.40	0.87

Continued on next page...

Continued from previous page...

Atom-1	Atom-2	Interatomic distance (Å)	Clash overlap (Å)
2:H:37:HIS:CD2	2:H:107:PHE:HE1	1.92	0.87
3:A:449:ASN:C	3:A:449:ASN:HD22	1.78	0.86
3:A:609:ARG:HH11	3:A:609:ARG:HB3	1.40	0.86
3:A:526:HIS:NE2	3:A:563:GLU:OE1	2.09	0.86
2:H:34:TYR:CE1	2:H:101:ASP:HA	2.10	0.86
3:A:311:LEU:C	3:A:311:LEU:HD12	1.96	0.86
3:A:711:ASP:HB3	3:A:723:PRO:HG2	1.58	0.85
3:A:319:GLN:HG3	3:A:675:THR:HG23	1.59	0.85
2:H:37:HIS:CD2	2:H:107:PHE:CE1	2.65	0.85
2:H:100:GLY:HA3	2:H:106:TRP:CZ3	2.10	0.85
3:A:507:LYS:HA	3:A:517:VAL:HG23	1.58	0.85
3:A:518:ASN:CB	3:A:519:PRO:HD2	2.06	0.85
3:A:609:ARG:HD3	3:A:633:LEU:O	1.75	0.85
2:H:35:THR:CG2	2:H:106:TRP:CH2	2.60	0.84
3:A:240:ILE:HD12	3:A:240:ILE:N	1.92	0.84
1:L:4:MET:CE	1:L:90:GLN:HB2	2.06	0.84
3:A:701:THR:CG2	3:A:702:SER:N	2.40	0.84
2:H:119:SER:CB	2:H:153:PHE:HE2	1.91	0.84
3:A:365:PHE:CE2	3:A:367:ALA:HB3	2.13	0.84
3:A:335:ASN:HD21	3:A:338:SER:HB2	1.43	0.84
1:L:83:VAL:CG1	1:L:106:ILE:HB	2.08	0.83
2:H:12:LEU:CD2	2:H:208:ALA:HB1	2.09	0.82
3:A:563:GLU:O	3:A:566:ARG:HG3	1.79	0.82
2:H:37:HIS:CG	2:H:107:PHE:HE1	1.96	0.82
3:A:526:HIS:CE1	3:A:561:ASP:OD2	2.32	0.82
1:L:107:LYS:CE	1:L:108:ARG:CB	2.48	0.81
3:A:245:ARG:HG3	3:A:245:ARG:HH11	1.44	0.81
3:A:701:THR:HG22	3:A:702:SER:N	1.95	0.81
3:A:518:ASN:CG	3:A:519:PRO:HD2	2.01	0.81
2:H:5:LEU:CD2	2:H:25:VAL:HG12	2.08	0.81
2:H:7:GLU:CG	2:H:114:THR:HG23	2.11	0.81
3:A:508:TYR:CD1	3:A:508:TYR:C	2.55	0.80
1:L:107:LYS:HZ1	1:L:108:ARG:HG2	1.46	0.80
3:A:484:ARG:HH11	3:A:575:GLN:H	1.27	0.80
3:A:609:ARG:HB3	3:A:609:ARG:NH1	1.97	0.79
1:L:32:ARG:HD3	1:L:92:TRP:CE3	2.18	0.79
3:A:335:ASN:ND2	3:A:338:SER:CB	2.46	0.79
3:A:484:ARG:HH11	3:A:575:GLN:N	1.81	0.79
3:A:508:TYR:C	3:A:508:TYR:HD1	1.86	0.78
1:L:32:ARG:HD3	1:L:92:TRP:HE3	1.45	0.78
3:A:689:GLU:HG2	3:A:690:ASN:N	1.97	0.78

Continued on next page...

Continued from previous page...

Atom-1	Atom-2	Interatomic distance (Å)	Clash overlap (Å)
3:A:245:ARG:HH11	3:A:245:ARG:CG	1.96	0.77
3:A:379:THR:HG21	3:A:391:SER:H	1.46	0.77
2:H:35:THR:CG2	2:H:106:TRP:CZ3	2.67	0.77
3:A:286:ARG:HD2	3:A:361:CYS:SG	2.23	0.77
1:L:13:VAL:HG21	1:L:104:LEU:HD11	1.65	0.77
3:A:499:GLU:HA	3:A:499:GLU:OE1	1.85	0.77
2:H:12:LEU:HD21	2:H:208:ALA:HB1	1.67	0.77
3:A:522:ALA:HB2	3:A:609:ARG:HG2	1.66	0.77
3:A:531:GLU:OE1	3:A:563:GLU:OE1	2.03	0.77
1:L:107:LYS:NZ	1:L:107:LYS:HA	2.00	0.77
1:L:39:LYS:HB2	2:H:1:SER:HB2	1.66	0.76
2:H:139:THR:CB	2:H:143:VAL:HG12	2.15	0.76
3:A:620:LYS:HB2	3:A:642:PRO:HG2	1.66	0.76
1:L:29:ILE:HD11	1:L:71:TYR:CE1	2.19	0.76
2:H:12:LEU:CD2	2:H:208:ALA:CB	2.63	0.76
3:A:426:HIS:HB2	3:A:567:THR:HG21	1.67	0.76
3:A:713:THR:HG22	3:A:714:VAL:N	1.99	0.76
3:A:521:PRO:HA	3:A:633:LEU:HD21	1.68	0.76
1:L:4:MET:HE1	1:L:29:ILE:HG21	1.68	0.75
2:H:100:GLY:HA3	2:H:106:TRP:HZ3	1.46	0.75
2:H:195:TRP:HZ2	2:H:218:GLU:HB2	1.52	0.75
3:A:434:MET:HG2	3:A:473:GLN:OE1	1.86	0.75
3:A:565:ILE:O	3:A:567:THR:N	2.20	0.75
1:L:29:ILE:HD12	1:L:33:LEU:HB2	1.69	0.74
2:H:34:TYR:N	2:H:102:TYR:CE2	2.55	0.74
2:H:30:ILE:HD11	2:H:78:ASN:C	2.06	0.74
2:H:115:LEU:HD13	2:H:116:VAL:N	2.03	0.74
3:A:513:ARG:HG2	3:A:513:ARG:NH1	1.91	0.74
2:H:12:LEU:HD21	2:H:208:ALA:CB	2.18	0.73
3:A:292:SER:O	3:A:293:PRO:C	2.27	0.73
3:A:470:ILE:HG22	3:A:471:ARG:N	2.02	0.73
2:H:87:VAL:CG1	2:H:118:VAL:HG21	2.19	0.73
2:H:99:ARG:HD2	2:H:108:THR:CG2	2.17	0.73
2:H:37:HIS:CG	2:H:107:PHE:CE1	2.77	0.73
1:L:8:SER:HB3	1:L:11:PHE:CE2	2.24	0.73
2:H:30:ILE:HG21	2:H:73:ARG:HD2	1.69	0.73
1:L:83:VAL:HG13	1:L:106:ILE:HB	1.70	0.72
3:A:513:ARG:HH11	3:A:513:ARG:CG	2.01	0.72
3:A:341:GLN:NE2	3:A:651:THR:HG23	2.02	0.72
3:A:518:ASN:HB3	3:A:519:PRO:HD2	1.71	0.72
1:L:91:TYR:HB3	2:H:106:TRP:HD1	1.53	0.72

Continued on next page...

Continued from previous page...

Atom-1	Atom-2	Interatomic distance (Å)	Clash overlap (Å)
1:L:15:LEU:HD12	1:L:78:LEU:O	1.89	0.71
1:L:107:LYS:HE3	1:L:171:SER:HB2	1.72	0.71
2:H:34:TYR:CD2	2:H:99:ARG:HD3	2.25	0.71
3:A:484:ARG:NH1	3:A:575:GLN:N	2.33	0.71
2:H:17:GLN:O	2:H:87:VAL:HG23	1.90	0.71
3:A:379:THR:HG21	3:A:391:SER:N	2.06	0.71
3:A:609:ARG:CD	3:A:633:LEU:O	2.38	0.71
3:A:509:HIS:HB2	3:A:514:ASP:HA	1.73	0.71
1:L:37:LYS:HE3	1:L:45:ARG:HD3	1.71	0.70
2:H:99:ARG:HD2	2:H:108:THR:HG21	1.73	0.70
2:H:12:LEU:HD11	2:H:154:PRO:HB3	1.73	0.70
3:A:466:GLY:H	3:A:469:ASP:HB2	1.57	0.70
1:L:32:ARG:HB3	1:L:91:TYR:CD1	2.27	0.70
3:A:339:THR:HG22	3:A:404:ARG:HA	1.75	0.69
3:A:713:THR:CG2	3:A:714:VAL:N	2.55	0.69
1:L:17:ASP:OD1	1:L:78:LEU:HD12	1.92	0.69
3:A:287:PHE:HB2	3:A:613:LEU:O	1.91	0.69
2:H:61:TYR:HB2	2:H:66:LYS:CD	2.11	0.69
3:A:379:THR:HB	3:A:390:SER:HB2	1.75	0.69
3:A:561:ASP:OD2	3:A:563:GLU:OE1	2.10	0.69
3:A:323:VAL:HG13	3:A:671:THR:HG22	1.74	0.68
2:H:30:ILE:CG2	2:H:73:ARG:HD2	2.23	0.68
2:H:34:TYR:CD1	2:H:101:ASP:HA	2.27	0.68
2:H:61:TYR:O	2:H:66:LYS:HE3	1.92	0.68
3:A:411:PHE:C	3:A:411:PHE:CD2	2.65	0.68
3:A:699:GLN:HE21	3:A:699:GLN:HA	1.58	0.68
3:A:432:ARG:HA	3:A:434:MET:CE	2.23	0.67
2:H:7:GLU:HG2	2:H:114:THR:HG23	1.76	0.67
1:L:19:VAL:HG21	1:L:78:LEU:HD11	1.76	0.67
2:H:34:TYR:HA	2:H:102:TYR:CD2	2.29	0.67
3:A:311:LEU:HG	3:A:413:TYR:HB3	1.75	0.67
3:A:452:SER:HB3	3:A:455:THR:O	1.94	0.67
3:A:247:TRP:HB3	3:A:370:PHE:CE2	2.29	0.67
3:A:526:HIS:CE1	3:A:531:GLU:HA	2.30	0.67
2:H:11:ASP:OD2	2:H:208:ALA:HB2	1.96	0.66
1:L:107:LYS:HE3	1:L:171:SER:CB	2.24	0.66
1:L:96:PHE:CZ	2:H:106:TRP:NE1	2.63	0.66
2:H:119:SER:OG	2:H:121:ALA:O	2.09	0.66
2:H:12:LEU:HD23	2:H:208:ALA:CB	2.26	0.66
1:L:13:VAL:O	1:L:106:ILE:HA	1.96	0.66
3:A:531:GLU:OE2	3:A:561:ASP:OD2	2.14	0.66

Continued on next page...

Continued from previous page...

Atom-1	Atom-2	Interatomic distance (Å)	Clash overlap (Å)
3:A:647:LEU:HD12	3:A:647:LEU:N	2.11	0.66
2:H:11:ASP:OD2	2:H:208:ALA:CA	2.43	0.66
1:L:83:VAL:HG12	1:L:106:ILE:N	2.08	0.65
3:A:449:ASN:C	3:A:449:ASN:ND2	2.50	0.65
2:H:37:HIS:CE1	2:H:107:PHE:HE1	2.14	0.65
2:H:42:PHE:HB3	2:H:43:PRO:HD2	1.79	0.65
3:A:405:THR:HG22	3:A:406:GLY:N	2.12	0.65
3:A:565:ILE:HG21	3:A:569:ASN:HB2	1.78	0.65
3:A:610:ASP:OD1	3:A:728:THR:HG22	1.97	0.65
1:L:33:LEU:HD23	1:L:34:ALA:N	2.12	0.65
3:A:421:HIS:NE2	3:A:728:THR:HG21	2.11	0.65
1:L:41:GLY:C	1:L:42:ASN:HD22	2.00	0.65
3:A:449:ASN:HA	3:A:458:SER:HA	1.78	0.65
1:L:48:ILE:HG12	1:L:54:LEU:HD23	1.79	0.64
3:A:322:GLU:OE1	3:A:335:ASN:HB2	1.97	0.64
2:H:11:ASP:OD2	2:H:208:ALA:HA	1.97	0.64
2:H:195:TRP:CZ2	2:H:218:GLU:HB2	2.32	0.64
3:A:531:GLU:OE2	3:A:561:ASP:CG	2.35	0.64
1:L:107:LYS:HZ3	1:L:108:ARG:HG2	1.60	0.64
2:H:139:THR:CB	2:H:143:VAL:CG1	2.75	0.64
3:A:302:ASN:HA	3:A:731:LEU:HD11	1.79	0.64
3:A:352:TYR:CZ	3:A:354:LEU:HD12	2.31	0.64
2:H:30:ILE:HG21	2:H:73:ARG:CD	2.27	0.64
2:H:139:THR:CG2	2:H:143:VAL:CG1	2.65	0.64
3:A:321:LYS:HE2	3:A:334:ASN:CG	2.18	0.64
3:A:526:HIS:HE1	3:A:561:ASP:OD2	1.81	0.64
2:H:119:SER:CB	2:H:153:PHE:CE2	2.79	0.64
3:A:245:ARG:HD2	3:A:363:PRO:HD2	1.81	0.63
1:L:91:TYR:CB	2:H:106:TRP:HD1	2.12	0.63
2:H:7:GLU:HG3	2:H:114:THR:HG23	1.80	0.63
3:A:260:ILE:HG12	3:A:274:GLY:O	1.98	0.63
3:A:281:TYR:O	3:A:372:VAL:HG13	1.98	0.63
3:A:477:TRP:C	3:A:478:LEU:HD12	2.17	0.63
3:A:530:GLU:HB3	3:A:533:PHE:HD1	1.62	0.63
3:A:535:PRO:HB2	3:A:538:GLY:H	1.62	0.63
3:A:650:ASN:N	3:A:650:ASN:HD22	1.96	0.63
3:A:283:ASP:OD2	3:A:283:ASP:C	2.36	0.63
3:A:509:HIS:CB	3:A:514:ASP:HA	2.28	0.63
3:A:711:ASP:CB	3:A:723:PRO:HG2	2.27	0.63
3:A:321:LYS:O	3:A:672:GLN:HB2	1.98	0.63
3:A:418:VAL:HG22	3:A:419:PRO:CD	2.29	0.63

Continued on next page...

Continued from previous page...

Atom-1	Atom-2	Interatomic distance (Å)	Clash overlap (Å)
3:A:531:GLU:OE1	3:A:563:GLU:CD	2.36	0.63
3:A:342:VAL:HG12	3:A:343:PHE:N	2.14	0.63
2:H:5:LEU:HD22	2:H:25:VAL:CG1	2.12	0.62
3:A:433:LEU:H	3:A:434:MET:HE3	1.63	0.62
3:A:531:GLU:OE1	3:A:563:GLU:OE2	2.17	0.62
1:L:83:VAL:HG12	1:L:106:ILE:HB	1.79	0.62
1:L:39:LYS:HE3	1:L:83:VAL:HG23	1.82	0.62
1:L:93:ILE:HA	3:A:717:ASN:ND2	2.14	0.62
1:L:105:GLU:OE1	1:L:173:TYR:OH	2.17	0.62
1:L:160:LEU:HD11	2:H:176:LEU:HB2	1.81	0.62
1:L:91:TYR:HA	1:L:96:PHE:HD1	1.65	0.62
2:H:12:LEU:HD21	2:H:154:PRO:CB	2.29	0.62
3:A:526:HIS:NE2	3:A:531:GLU:OE1	2.32	0.61
2:H:106:TRP:HA	2:H:106:TRP:CE3	2.35	0.61
3:A:711:ASP:O	3:A:712:PHE:HB2	2.00	0.61
3:A:732:THR:O	3:A:732:THR:HG22	1.99	0.61
3:A:294:ARG:NH1	3:A:298:ARG:HG2	2.16	0.61
3:A:405:THR:HG22	3:A:406:GLY:H	1.66	0.61
2:H:12:LEU:HD23	2:H:208:ALA:HB1	1.81	0.60
3:A:411:PHE:HD2	3:A:412:SER:N	2.00	0.60
3:A:421:HIS:CD2	3:A:728:THR:HG21	2.36	0.60
1:L:32:ARG:HB3	1:L:91:TYR:CE1	2.36	0.60
2:H:34:TYR:CG	2:H:99:ARG:HD3	2.35	0.60
2:H:35:THR:HG22	2:H:106:TRP:CZ3	2.36	0.60
3:A:359:GLN:HG3	3:A:359:GLN:O	2.01	0.60
1:L:13:VAL:CG2	1:L:104:LEU:HD11	2.29	0.60
2:H:92:THR:HG23	2:H:117:THR:HA	1.82	0.60
3:A:491:THR:O	3:A:491:THR:HG22	2.01	0.60
3:A:531:GLU:CD	3:A:563:GLU:OE1	2.40	0.60
2:H:34:TYR:N	2:H:102:TYR:HE2	2.00	0.60
3:A:365:PHE:HE2	3:A:367:ALA:HB3	1.66	0.60
1:L:75:ILE:CG2	1:L:78:LEU:HD23	2.30	0.60
3:A:311:LEU:C	3:A:311:LEU:CD1	2.65	0.60
1:L:39:LYS:HE3	1:L:83:VAL:CG2	2.32	0.59
2:H:4:GLN:O	2:H:5:LEU:HG	2.02	0.59
3:A:365:PHE:HD2	3:A:368:ASP:OD1	1.85	0.59
3:A:470:ILE:HA	3:A:473:GLN:HG3	1.83	0.59
3:A:478:LEU:CD1	3:A:478:LEU:N	2.65	0.59
2:H:100:GLY:HA3	2:H:106:TRP:CE3	2.37	0.59
3:A:500:TYR:CD1	3:A:500:TYR:N	2.69	0.59
3:A:404:ARG:H	3:A:407:ASN:HD22	1.49	0.59

Continued on next page...

Continued from previous page...

Atom-1	Atom-2	Interatomic distance (Å)	Clash overlap (Å)
3:A:650:ASN:N	3:A:650:ASN:ND2	2.49	0.59
3:A:289:CYS:SG	3:A:362:LEU:HB2	2.43	0.59
3:A:316:PHE:HD1	3:A:317:ASN:ND2	1.94	0.59
1:L:107:LYS:CE	1:L:108:ARG:HG2	2.32	0.58
3:A:581:THR:HB	3:A:591:ALA:HB1	1.85	0.58
2:H:99:ARG:HH11	2:H:108:THR:HG21	1.67	0.58
3:A:263:GLN:HE21	3:A:263:GLN:CA	2.16	0.58
3:A:518:ASN:CB	3:A:519:PRO:CD	2.80	0.58
3:A:598:GLN:OE1	3:A:598:GLN:HA	2.03	0.58
2:H:30:ILE:HD11	2:H:79:GLN:N	2.18	0.58
2:H:87:VAL:HG11	2:H:118:VAL:HG21	1.85	0.58
3:A:240:ILE:N	3:A:240:ILE:CD1	2.63	0.58
3:A:565:ILE:CG2	3:A:569:ASN:HB2	2.33	0.58
3:A:395:LEU:HD11	3:A:647:LEU:HD22	1.86	0.58
3:A:507:LYS:HB2	3:A:515:SER:O	2.04	0.58
1:L:91:TYR:HA	1:L:96:PHE:CD1	2.38	0.58
3:A:421:HIS:NE2	3:A:611:VAL:HG22	2.19	0.58
1:L:28:ASP:OD1	1:L:68:GLY:HA2	2.04	0.57
2:H:35:THR:CG2	2:H:106:TRP:HH2	2.04	0.57
3:A:581:THR:HB	3:A:591:ALA:CB	2.34	0.57
1:L:91:TYR:HB3	2:H:106:TRP:CD1	2.38	0.57
3:A:547:SER:OG	3:A:556:LYS:HB3	2.04	0.57
3:A:612:TYR:HA	3:A:726:ILE:O	2.03	0.57
2:H:35:THR:HG23	2:H:37:HIS:NE2	2.19	0.57
2:H:119:SER:HB2	2:H:153:PHE:HE2	1.67	0.57
3:A:449:ASN:HB2	3:A:456:THR:OG1	2.04	0.57
3:A:529:ASP:C	3:A:530:GLU:HG2	2.25	0.57
2:H:87:VAL:HG12	2:H:118:VAL:HG21	1.87	0.57
3:A:257:TYR:OH	3:A:395:LEU:HB2	2.04	0.57
3:A:325:GLN:HG2	3:A:330:THR:HG22	1.87	0.57
3:A:609:ARG:HH11	3:A:609:ARG:CB	2.15	0.57
1:L:33:LEU:HD23	1:L:33:LEU:C	2.24	0.57
2:H:11:ASP:OD2	2:H:208:ALA:CB	2.52	0.57
3:A:245:ARG:HG3	3:A:245:ARG:NH1	2.16	0.57
3:A:311:LEU:HD12	3:A:312:ASN:N	2.19	0.57
3:A:508:TYR:HD1	3:A:508:TYR:O	1.87	0.57
3:A:508:TYR:CD1	3:A:508:TYR:O	2.58	0.56
3:A:607:GLN:HE21	3:A:607:GLN:CA	2.18	0.56
1:L:213:GLU:CA	1:L:214:CYS:N	2.64	0.56
3:A:601:LEU:O	3:A:604:MET:HG3	2.06	0.56
1:L:107:LYS:CE	1:L:108:ARG:CG	2.83	0.56

Continued on next page...

Continued from previous page...

Atom-1	Atom-2	Interatomic distance (Å)	Clash overlap (Å)
3:A:321:LYS:HE2	3:A:334:ASN:OD1	2.04	0.56
3:A:323:VAL:CG1	3:A:671:THR:HG22	2.34	0.56
3:A:345:ASP:CG	3:A:345:ASP:O	2.43	0.56
3:A:352:TYR:HA	3:A:645:GLN:OE1	2.05	0.56
2:H:44:GLY:O	2:H:45:ASN:HB2	2.04	0.56
3:A:433:LEU:HD23	3:A:433:LEU:O	2.05	0.56
3:A:462:PHE:N	3:A:462:PHE:CD2	2.72	0.56
1:L:39:LYS:HB2	2:H:1:SER:OG	2.06	0.56
1:L:79:GLN:O	1:L:82:ASP:HB2	2.06	0.56
3:A:518:ASN:HB3	3:A:519:PRO:CD	2.34	0.56
1:L:117:ILE:HG13	1:L:134:CYS:SG	2.46	0.56
3:A:302:ASN:C	3:A:303:ASN:ND2	2.59	0.56
3:A:413:TYR:CD2	3:A:414:THR:N	2.74	0.56
3:A:650:ASN:HD22	3:A:650:ASN:H	1.54	0.56
1:L:193:THR:OG1	1:L:208:SER:HB3	2.05	0.56
3:A:304:TRP:HE3	3:A:304:TRP:HA	1.71	0.56
3:A:418:VAL:HG22	3:A:419:PRO:HD2	1.87	0.55
3:A:521:PRO:O	3:A:523:MET:HG2	2.06	0.55
3:A:531:GLU:OE2	3:A:563:GLU:OE1	2.23	0.55
3:A:714:VAL:HB	3:A:718:GLY:HA2	1.87	0.55
2:H:87:VAL:HG11	2:H:118:VAL:CG2	2.37	0.55
2:H:115:LEU:CD1	2:H:117:THR:HG23	2.35	0.55
3:A:297:GLN:O	3:A:300:ILE:HG22	2.05	0.55
3:A:411:PHE:CD2	3:A:412:SER:N	2.74	0.55
3:A:480:GLY:O	3:A:576:TYR:HE1	1.89	0.55
1:L:83:VAL:HG23	1:L:83:VAL:O	2.05	0.55
3:A:339:THR:HG22	3:A:404:ARG:CA	2.36	0.55
3:A:470:ILE:O	3:A:471:ARG:C	2.45	0.55
3:A:481:PRO:HB3	3:A:604:MET:HE1	1.88	0.55
1:L:141:PRO:O	1:L:198:HIS:HE1	1.89	0.55
3:A:733:ARG:HG2	3:A:734:ASN:N	2.21	0.55
3:A:313:PHE:CD2	3:A:314:LYS:N	2.75	0.55
3:A:518:ASN:OD1	3:A:519:PRO:HD2	2.07	0.55
1:L:22:THR:HG22	1:L:23:CYS:N	2.20	0.55
1:L:52:THR:HG22	1:L:52:THR:O	2.06	0.55
3:A:342:VAL:HG23	3:A:403:LEU:HD12	1.88	0.55
1:L:39:LYS:HD2	1:L:40:PRO:HD2	1.89	0.55
2:H:34:TYR:HA	2:H:102:TYR:HD2	1.69	0.54
2:H:37:HIS:CD2	2:H:107:PHE:CD1	2.94	0.54
3:A:379:THR:HG21	3:A:390:SER:HA	1.88	0.54
1:L:29:ILE:CD1	1:L:33:LEU:HB2	2.37	0.54

Continued on next page...

Continued from previous page...

Atom-1	Atom-2	Interatomic distance (Å)	Clash overlap (Å)
3:A:431:ASP:O	3:A:434:MET:HE3	2.06	0.54
3:A:518:ASN:O	3:A:519:PRO:C	2.43	0.54
2:H:35:THR:CG2	2:H:106:TRP:HZ3	2.19	0.54
2:H:108:THR:HG23	2:H:109:TYR:N	2.22	0.54
1:L:107:LYS:NZ	1:L:108:ARG:CG	2.60	0.54
2:H:3:VAL:HG21	2:H:110:TRP:HB2	1.89	0.54
2:H:34:TYR:HE1	2:H:101:ASP:HA	1.65	0.54
2:H:12:LEU:HD13	2:H:117:THR:OG1	2.08	0.54
2:H:37:HIS:CE1	2:H:106:TRP:CZ3	2.94	0.54
1:L:91:TYR:CB	2:H:106:TRP:CD1	2.91	0.54
3:A:307:ARG:HD2	3:A:418:VAL:HG12	1.90	0.54
3:A:549:LYS:O	3:A:549:LYS:HG2	2.08	0.54
3:A:313:PHE:CD2	3:A:313:PHE:C	2.81	0.54
3:A:339:THR:HG22	3:A:403:LEU:O	2.08	0.53
3:A:254:ASN:O	3:A:255:HIS:HB2	2.07	0.53
2:H:195:TRP:HB3	2:H:196:PRO:HD3	1.89	0.53
3:A:424:TYR:CD1	3:A:733:ARG:HB3	2.42	0.53
3:A:689:GLU:O	3:A:690:ASN:HB2	2.08	0.53
1:L:18:ARG:NH2	1:L:76:THR:HG23	2.24	0.53
2:H:80:PHE:CZ	2:H:97:CYS:HB2	2.43	0.53
2:H:99:ARG:O	2:H:107:PHE:HA	2.08	0.53
3:A:285:ASN:ND2	3:A:618:TRP:CE2	2.76	0.53
3:A:311:LEU:CD1	3:A:312:ASN:N	2.72	0.53
3:A:263:GLN:O	3:A:265:GLY:N	2.41	0.53
1:L:125:LEU:HD22	1:L:183:LYS:HG3	1.91	0.53
3:A:526:HIS:CE1	3:A:563:GLU:OE1	2.61	0.53
1:L:116:SER:O	1:L:134:CYS:HA	2.08	0.53
3:A:323:VAL:HG13	3:A:671:THR:CG2	2.38	0.53
3:A:575:GLN:HB2	3:A:595:VAL:O	2.07	0.53
2:H:53:ILE:HG23	2:H:53:ILE:O	2.09	0.53
3:A:438:ILE:HG22	3:A:439:ASP:O	2.09	0.53
2:H:119:SER:HB2	2:H:153:PHE:CE2	2.43	0.53
3:A:379:THR:CG2	3:A:390:SER:HA	2.39	0.53
3:A:307:ARG:HB2	3:A:308:PRO:HD2	1.91	0.53
1:L:83:VAL:HG12	1:L:106:ILE:CB	2.39	0.52
2:H:37:HIS:HE2	2:H:106:TRP:HZ3	1.43	0.52
3:A:587:ASN:H	3:A:587:ASN:ND2	2.07	0.52
3:A:259:GLN:NE2	3:A:273:PHE:CE1	2.77	0.52
3:A:491:THR:HB	3:A:494:ASP:OD2	2.09	0.52
3:A:526:HIS:CE1	3:A:531:GLU:CD	2.82	0.52
1:L:13:VAL:HG23	1:L:106:ILE:HG12	1.91	0.52

Continued on next page...

Continued from previous page...

Atom-1	Atom-2	Interatomic distance (Å)	Clash overlap (Å)
1:L:180:THR:HG21	2:H:150:LYS:NZ	2.24	0.52
2:H:12:LEU:CD2	2:H:208:ALA:HB2	2.38	0.52
3:A:269:ASP:HA	3:A:513:ARG:HB3	1.90	0.52
3:A:530:GLU:HB3	3:A:533:PHE:CD1	2.43	0.52
1:L:13:VAL:HB	1:L:78:LEU:HD12	1.92	0.52
2:H:35:THR:HG22	2:H:106:TRP:HZ3	1.73	0.52
2:H:37:HIS:CE1	2:H:106:TRP:CH2	2.98	0.52
2:H:161:TRP:CG	2:H:188:VAL:HG21	2.44	0.52
2:H:162:ASN:O	2:H:200:VAL:HA	2.10	0.52
3:A:304:TRP:HA	3:A:304:TRP:CE3	2.43	0.52
3:A:441:TYR:CD2	3:A:442:LEU:HD13	2.44	0.52
1:L:5:THR:HG22	1:L:24:LYS:HG3	1.92	0.52
3:A:263:GLN:HE21	3:A:263:GLN:HA	1.75	0.52
3:A:478:LEU:HD12	3:A:478:LEU:N	2.24	0.52
2:H:13:VAL:HG23	2:H:118:VAL:HG22	1.92	0.52
3:A:420:PHE:CD1	3:A:687:GLN:HB2	2.45	0.52
3:A:424:TYR:O	3:A:729:ARG:HG2	2.10	0.52
2:H:123:THR:HG23	2:H:154:PRO:HG2	1.92	0.51
3:A:701:THR:HG23	3:A:702:SER:H	1.75	0.51
3:A:325:GLN:CG	3:A:330:THR:HG22	2.40	0.51
3:A:352:TYR:OH	3:A:642:PRO:HB2	2.10	0.51
3:A:262:SER:CB	3:A:271:HIS:HA	2.40	0.51
1:L:106:ILE:HG22	1:L:107:LYS:HG2	1.92	0.51
1:L:8:SER:O	1:L:102:THR:HG23	2.11	0.51
1:L:42:ASN:HD22	1:L:42:ASN:N	2.09	0.51
2:H:34:TYR:CA	2:H:102:TYR:CD2	2.93	0.51
3:A:433:LEU:H	3:A:434:MET:CE	2.22	0.51
3:A:423:SER:HA	3:A:728:THR:CG2	2.40	0.51
1:L:210:ASN:HB2	1:L:213:GLU:CG	2.41	0.51
1:L:19:VAL:CG2	1:L:78:LEU:HD11	2.39	0.51
1:L:38:GLN:HB3	1:L:85:THR:HG22	1.91	0.51
3:A:292:SER:O	3:A:295:ASP:N	2.44	0.51
3:A:690:ASN:O	3:A:690:ASN:CG	2.47	0.51
3:A:701:THR:CG2	3:A:702:SER:H	2.23	0.51
3:A:283:ASP:O	3:A:361:CYS:HA	2.10	0.50
3:A:379:THR:HG22	3:A:380:LEU:HD12	1.93	0.50
3:A:294:ARG:HH12	3:A:298:ARG:HG2	1.76	0.50
3:A:343:PHE:CD1	3:A:343:PHE:C	2.84	0.50
3:A:465:ALA:HB1	3:A:473:GLN:HG2	1.93	0.50
3:A:565:ILE:O	3:A:566:ARG:C	2.49	0.50
2:H:49:TRP:HZ2	2:H:52:TYR:CD2	2.30	0.50

Continued on next page...

Continued from previous page...

Atom-1	Atom-2	Interatomic distance (Å)	Clash overlap (Å)
1:L:12:SER:O	1:L:13:VAL:HG13	2.11	0.50
1:L:95:PRO:HG3	2:H:63:PRO:HD2	1.93	0.50
3:A:404:ARG:O	3:A:407:ASN:HB2	2.12	0.50
3:A:693:ARG:HH21	3:A:695:ASN:HD21	1.59	0.50
3:A:701:THR:HG23	3:A:702:SER:N	2.26	0.50
2:H:194:THR:O	2:H:198:GLN:HB2	2.12	0.50
3:A:484:ARG:HD3	3:A:596:ASN:OD1	2.11	0.50
1:L:13:VAL:HB	1:L:17:ASP:OD2	2.12	0.50
1:L:45:ARG:HD2	2:H:2:ASP:N	2.27	0.50
3:A:508:TYR:CE1	3:A:515:SER:HB2	2.46	0.50
2:H:99:ARG:NH1	2:H:108:THR:HG21	2.27	0.50
2:H:133:PRO:HD3	2:H:145:LEU:HD23	1.93	0.50
1:L:48:ILE:HG22	1:L:49:SER:N	2.26	0.50
2:H:204:VAL:O	2:H:212:THR:HA	2.12	0.50
1:L:8:SER:CB	1:L:11:PHE:CZ	2.95	0.49
1:L:83:VAL:O	1:L:84:ALA:HB2	2.11	0.49
3:A:685:GLU:HG2	3:A:686:LEU:N	2.27	0.49
2:H:13:VAL:CG2	2:H:118:VAL:HG22	2.42	0.49
3:A:669:PHE:N	3:A:669:PHE:CD1	2.80	0.49
3:A:713:THR:CG2	3:A:714:VAL:H	2.23	0.49
3:A:379:THR:HG21	3:A:390:SER:CA	2.41	0.49
3:A:732:THR:O	3:A:732:THR:CG2	2.59	0.49
3:A:701:THR:HG22	3:A:702:SER:O	2.12	0.49
1:L:13:VAL:HG11	1:L:19:VAL:HG22	1.93	0.49
3:A:326:ASN:O	3:A:329:THR:HG23	2.11	0.49
3:A:379:THR:CB	3:A:390:SER:HB2	2.42	0.49
3:A:281:TYR:CE2	3:A:373:PRO:HB2	2.48	0.49
3:A:309:LYS:HB2	3:A:683:GLU:HG2	1.94	0.49
1:L:37:LYS:HE2	1:L:47:LEU:HD21	1.95	0.49
2:H:37:HIS:CE1	2:H:107:PHE:CE1	2.99	0.48
3:A:650:ASN:O	3:A:651:THR:C	2.51	0.48
1:L:107:LYS:HE3	1:L:108:ARG:HB3	1.79	0.48
2:H:37:HIS:NE2	2:H:107:PHE:HE1	2.09	0.48
2:H:161:TRP:CE2	2:H:188:VAL:HG23	2.48	0.48
1:L:107:LYS:HE2	1:L:108:ARG:CA	2.40	0.48
3:A:311:LEU:HD12	3:A:311:LEU:O	2.11	0.48
3:A:343:PHE:HB3	3:A:400:SER:HA	1.96	0.48
3:A:689:GLU:CG	3:A:690:ASN:N	2.73	0.48
2:H:12:LEU:HD21	2:H:154:PRO:HB3	1.95	0.48
3:A:711:ASP:O	3:A:712:PHE:CB	2.61	0.48
1:L:30:HIS:O	1:L:32:ARG:HD2	2.13	0.48

Continued on next page...

Continued from previous page...

Atom-1	Atom-2	Interatomic distance (Å)	Clash overlap (Å)
2:H:80:PHE:HZ	2:H:97:CYS:HB2	1.79	0.48
3:A:324:THR:O	3:A:330:THR:HA	2.14	0.48
3:A:653:VAL:HG12	3:A:670:ILE:HG13	1.94	0.48
3:A:302:ASN:C	3:A:303:ASN:HD22	2.16	0.48
3:A:354:LEU:H	3:A:354:LEU:HG	1.40	0.48
3:A:535:PRO:HB2	3:A:538:GLY:N	2.29	0.48
2:H:12:LEU:HD11	2:H:154:PRO:CB	2.41	0.48
3:A:345:ASP:O	3:A:347:GLU:N	2.46	0.48
2:H:37:HIS:ND1	2:H:107:PHE:HE1	2.10	0.48
2:H:55:PHE:CE2	2:H:102:TYR:OH	2.66	0.48
3:A:423:SER:CB	3:A:728:THR:HG23	2.43	0.48
1:L:13:VAL:HG21	1:L:78:LEU:CD1	2.43	0.48
3:A:420:PHE:CE1	3:A:687:GLN:HB2	2.49	0.47
3:A:582:ASN:C	3:A:582:ASN:OD1	2.53	0.47
3:A:675:THR:OG1	3:A:676:GLY:N	2.47	0.47
2:H:74:ASP:OD2	2:H:77:LYS:HD2	2.14	0.47
2:H:37:HIS:NE2	2:H:107:PHE:CE1	2.83	0.47
1:L:107:LYS:HZ1	1:L:171:SER:HB3	1.79	0.47
2:H:119:SER:OG	2:H:153:PHE:CE2	2.68	0.47
3:A:221:VAL:HG12	3:A:222:GLY:N	2.29	0.47
3:A:607:GLN:CA	3:A:607:GLN:NE2	2.78	0.47
3:A:618:TRP:CD1	3:A:619:ALA:N	2.83	0.47
3:A:295:ASP:HA	3:A:298:ARG:HG3	1.97	0.47
2:H:115:LEU:HD13	2:H:115:LEU:C	2.35	0.47
3:A:259:GLN:NE2	3:A:273:PHE:HE1	2.13	0.47
3:A:337:THR:O	3:A:338:SER:C	2.53	0.47
3:A:265:GLY:O	3:A:266:ALA:O	2.33	0.47
3:A:544:LYS:O	3:A:545:GLN:C	2.53	0.47
3:A:655:ALA:H	3:A:669:PHE:HA	1.80	0.47
1:L:39:LYS:HG3	1:L:40:PRO:N	2.30	0.46
2:H:41:GLN:O	2:H:93:ALA:HB1	2.15	0.46
2:H:101:ASP:CG	2:H:108:THR:HB	2.36	0.46
3:A:335:ASN:ND2	3:A:338:SER:HB3	2.27	0.46
3:A:362:LEU:HD23	3:A:362:LEU:HA	1.74	0.46
1:L:38:GLN:O	1:L:84:ALA:HB1	2.16	0.46
3:A:286:ARG:HD2	3:A:361:CYS:HB2	1.97	0.46
1:L:15:LEU:HD12	1:L:79:GLN:CA	2.37	0.46
3:A:486:GLN:CB	3:A:536:GLN:OE1	2.63	0.46
3:A:486:GLN:HA	3:A:486:GLN:OE1	2.15	0.46
1:L:37:LYS:CE	1:L:45:ARG:HD3	2.41	0.46
1:L:137:ASN:HD22	1:L:174:SER:HB3	1.81	0.46

Continued on next page...

Continued from previous page...

Atom-1	Atom-2	Interatomic distance (Å)	Clash overlap (Å)
3:A:263:GLN:HA	3:A:263:GLN:NE2	2.30	0.46
1:L:36:TYR:CE1	1:L:46:LEU:HD13	2.50	0.46
2:H:99:ARG:HG2	2:H:100:GLY:N	2.31	0.46
3:A:335:ASN:HD22	3:A:338:SER:CB	2.27	0.46
3:A:693:ARG:NH1	3:A:697:GLU:OE1	2.40	0.46
1:L:13:VAL:CG2	1:L:78:LEU:CD1	2.93	0.46
2:H:159:VAL:HG23	2:H:184:MET:HE1	1.96	0.46
3:A:300:ILE:HD11	3:A:728:THR:HA	1.97	0.46
3:A:395:LEU:CD1	3:A:647:LEU:HD22	2.46	0.46
3:A:262:SER:HB3	3:A:272:TYR:N	2.31	0.45
3:A:315:LEU:HD23	3:A:678:VAL:HG23	1.98	0.45
3:A:416:GLU:OE2	3:A:640:LYS:HB3	2.17	0.45
1:L:39:LYS:CD	1:L:40:PRO:HD2	2.45	0.45
3:A:497:ASN:O	3:A:498:SER:HB3	2.16	0.45
3:A:611:VAL:O	3:A:612:TYR:HB2	2.15	0.45
3:A:682:ILE:HG22	3:A:683:GLU:N	2.31	0.45
3:A:712:PHE:CZ	3:A:723:PRO:HD2	2.50	0.45
3:A:569:ASN:OD1	3:A:569:ASN:N	2.49	0.45
1:L:8:SER:HB3	1:L:11:PHE:CZ	2.52	0.45
2:H:3:VAL:HB	2:H:4:GLN:H	1.48	0.45
2:H:155:GLU:O	2:H:156:SER:HB2	2.17	0.45
3:A:326:ASN:O	3:A:329:THR:CG2	2.64	0.45
3:A:380:LEU:HD12	3:A:390:SER:HA	1.99	0.45
3:A:649:LYS:HG2	3:A:650:ASN:N	2.32	0.45
1:L:89:GLN:HG2	1:L:90:GLN:N	2.32	0.45
1:L:125:LEU:O	1:L:183:LYS:HD2	2.16	0.45
2:H:37:HIS:NE2	2:H:106:TRP:CE3	2.80	0.45
3:A:322:GLU:O	3:A:322:GLU:HG3	2.17	0.45
2:H:161:TRP:CD2	2:H:188:VAL:HG21	2.52	0.45
3:A:259:GLN:HE21	3:A:273:PHE:HZ	1.65	0.45
3:A:450:THR:HB	3:A:459:ARG:HB3	1.98	0.45
3:A:293:PRO:O	3:A:294:ARG:C	2.54	0.45
3:A:380:LEU:HD13	3:A:390:SER:N	2.31	0.45
3:A:260:ILE:O	3:A:260:ILE:CG1	2.65	0.45
3:A:286:ARG:HD2	3:A:361:CYS:CB	2.46	0.45
3:A:343:PHE:CB	3:A:400:SER:HA	2.47	0.45
3:A:595:VAL:O	3:A:595:VAL:HG22	2.17	0.45
1:L:55:GLU:OE1	1:L:55:GLU:HA	2.16	0.45
3:A:319:GLN:HG3	3:A:675:THR:CG2	2.40	0.44
1:L:2:ILE:HG12	1:L:27:GLU:HG2	1.99	0.44
1:L:48:ILE:HG23	1:L:53:SER:O	2.18	0.44

Continued on next page...

Continued from previous page...

Atom-1	Atom-2	Interatomic distance (Å)	Clash overlap (Å)
3:A:324:THR:HG22	3:A:326:ASN:ND2	2.33	0.44
3:A:337:THR:O	3:A:338:SER:O	2.35	0.44
3:A:523:MET:SD	3:A:572:ALA:HA	2.58	0.44
1:L:105:GLU:HB2	1:L:166:GLN:OE1	2.18	0.44
3:A:240:ILE:HD12	3:A:240:ILE:H	1.75	0.44
3:A:307:ARG:HB3	3:A:420:PHE:HD2	1.82	0.44
3:A:239:VAL:O	3:A:239:VAL:HG13	2.18	0.44
3:A:295:ASP:O	3:A:296:TRP:C	2.56	0.44
3:A:521:PRO:CA	3:A:633:LEU:HD21	2.45	0.44
3:A:554:ILE:HG23	3:A:555:GLU:N	2.32	0.44
3:A:607:GLN:NE2	3:A:607:GLN:HA	2.32	0.44
1:L:13:VAL:HG21	1:L:78:LEU:HD11	1.99	0.44
1:L:213:GLU:N	1:L:214:CYS:N	2.66	0.44
3:A:253:ASN:HB3	3:A:256:LEU:O	2.18	0.44
3:A:532:LYS:HE2	3:A:533:PHE:CZ	2.52	0.44
3:A:610:ASP:OD1	3:A:728:THR:CG2	2.64	0.44
1:L:107:LYS:CE	1:L:171:SER:CB	2.95	0.44
3:A:244:THR:HG23	3:A:678:VAL:O	2.17	0.44
3:A:285:ASN:ND2	3:A:618:TRP:CD2	2.85	0.44
3:A:487:ARG:HB2	3:A:573:THR:HG21	2.00	0.44
3:A:575:GLN:HG3	3:A:594:ASP:HB3	1.99	0.44
1:L:55:GLU:HG3	1:L:56:THR:N	2.33	0.44
3:A:244:THR:HG23	3:A:679:SER:HB2	2.00	0.44
3:A:379:THR:HB	3:A:390:SER:CB	2.47	0.44
3:A:397:TYR:HD1	3:A:397:TYR:O	2.01	0.44
1:L:45:ARG:HD3	2:H:1:SER:HA	2.00	0.44
3:A:245:ARG:CG	3:A:245:ARG:NH1	2.66	0.44
3:A:357:ALA:HB2	3:A:634:MET:SD	2.58	0.44
3:A:429:SER:HA	3:A:567:THR:OG1	2.18	0.44
2:H:184:MET:HG2	2:H:185:SER:N	2.33	0.43
3:A:249:LEU:HA	3:A:250:PRO:HD3	1.66	0.43
3:A:281:TYR:O	3:A:373:PRO:HD2	2.16	0.43
3:A:525:SER:O	3:A:526:HIS:HB3	2.18	0.43
3:A:497:ASN:O	3:A:498:SER:CB	2.65	0.43
3:A:565:ILE:HG21	3:A:565:ILE:HD13	1.79	0.43
1:L:180:THR:HG21	2:H:150:LYS:HZ3	1.82	0.43
3:A:288:HIS:CE1	3:A:364:PRO:HG3	2.54	0.43
3:A:497:ASN:OD1	3:A:497:ASN:C	2.57	0.43
1:L:107:LYS:NZ	1:L:171:SER:HB3	2.32	0.43
2:H:39:ILE:HG23	2:H:48:GLU:O	2.18	0.43
2:H:53:ILE:HD13	2:H:73:ARG:HB2	2.00	0.43

Continued on next page...

Continued from previous page...

Atom-1	Atom-2	Interatomic distance (Å)	Clash overlap (Å)
3:A:713:THR:HG22	3:A:714:VAL:O	2.19	0.43
1:L:93:ILE:HG13	3:A:717:ASN:HB3	2.00	0.43
2:H:35:THR:CG2	2:H:37:HIS:NE2	2.82	0.43
1:L:14:SER:HA	1:L:106:ILE:HG23	2.00	0.43
3:A:610:ASP:OD2	3:A:728:THR:N	2.46	0.43
3:A:689:GLU:O	3:A:690:ASN:CB	2.66	0.43
2:H:153:PHE:O	2:H:182:TYR:CD2	2.72	0.43
3:A:648:ILE:O	3:A:648:ILE:HG23	2.17	0.43
1:L:48:ILE:CG2	1:L:49:SER:N	2.82	0.42
3:A:487:ARG:HD2	3:A:533:PHE:CG	2.54	0.42
1:L:155:ARG:HG3	1:L:155:ARG:HH11	1.84	0.42
1:L:183:LYS:O	1:L:187:GLU:HG3	2.18	0.42
2:H:106:TRP:CE3	2:H:106:TRP:CA	3.02	0.42
1:L:32:ARG:CB	1:L:91:TYR:CE1	3.01	0.42
1:L:87:TYR:CE1	1:L:101:GLY:HA3	2.55	0.42
3:A:228:TRP:CD1	3:A:228:TRP:C	2.92	0.42
3:A:238:ARG:C	3:A:239:VAL:HG12	2.38	0.42
1:L:39:LYS:HG3	1:L:40:PRO:HD2	2.00	0.42
2:H:173:PHE:HA	2:H:174:PRO:HD3	1.91	0.42
1:L:90:GLN:HE21	1:L:90:GLN:HB3	1.52	0.42
2:H:62:ASN:O	2:H:66:LYS:HG2	2.20	0.42
3:A:307:ARG:HG2	3:A:420:PHE:HE2	1.84	0.42
3:A:445:LEU:HD23	3:A:445:LEU:HA	1.80	0.42
3:A:479:PRO:HD2	3:A:576:TYR:OH	2.20	0.42
3:A:233:THR:O	3:A:239:VAL:HA	2.20	0.42
3:A:312:ASN:HD22	3:A:313:PHE:N	2.17	0.42
3:A:318:ILE:O	3:A:405:THR:HG23	2.20	0.42
3:A:435:ASN:HA	3:A:436:PRO:HD3	1.76	0.42
3:A:486:GLN:HB2	3:A:536:GLN:OE1	2.20	0.42
3:A:516:LEU:HD12	3:A:517:VAL:H	1.84	0.42
3:A:682:ILE:CG2	3:A:683:GLU:N	2.79	0.42
1:L:75:ILE:HG21	1:L:78:LEU:CD2	2.38	0.42
2:H:87:VAL:HG12	2:H:88:THR:N	2.33	0.42
2:H:153:PHE:O	2:H:154:PRO:C	2.58	0.42
2:H:171:HIS:O	2:H:186:SER:HA	2.19	0.42
2:H:14:LYS:HB2	2:H:17:GLN:HG3	2.02	0.42
3:A:228:TRP:NE1	3:A:230:CYS:HB2	2.34	0.42
3:A:350:LEU:HD23	3:A:350:LEU:HA	1.85	0.42
3:A:534:PHE:HB2	3:A:535:PRO:CD	2.49	0.42
1:L:32:ARG:NE	1:L:92:TRP:HZ3	2.18	0.42
1:L:184:ASP:O	1:L:188:ARG:HG3	2.19	0.42

Continued on next page...

Continued from previous page...

Atom-1	Atom-2	Interatomic distance (Å)	Clash overlap (Å)
2:H:34:TYR:CA	2:H:102:TYR:HD2	2.33	0.42
3:A:335:ASN:O	3:A:336:LEU:C	2.58	0.42
1:L:13:VAL:CG2	1:L:104:LEU:CD1	2.98	0.42
1:L:93:ILE:HG12	1:L:94:GLY:N	2.35	0.42
3:A:262:SER:OG	3:A:271:HIS:ND1	2.30	0.42
3:A:488:VAL:HG22	3:A:534:PHE:O	2.20	0.42
3:A:530:GLU:C	3:A:532:LYS:N	2.73	0.42
1:L:91:TYR:HH	2:H:104:TYR:HE2	1.65	0.41
3:A:259:GLN:HG2	3:A:260:ILE:N	2.35	0.41
3:A:315:LEU:HD23	3:A:315:LEU:HA	1.92	0.41
3:A:657:PRO:HB3	3:A:666:PHE:HZ	1.85	0.41
3:A:700:TYR:CD2	3:A:700:TYR:C	2.93	0.41
1:L:135:PHE:C	1:L:136:LEU:HD12	2.40	0.41
3:A:247:TRP:CD1	3:A:676:GLY:O	2.73	0.41
3:A:372:VAL:HA	3:A:373:PRO:HD3	1.82	0.41
3:A:584:GLN:C	3:A:584:GLN:OE1	2.59	0.41
3:A:297:GLN:HA	3:A:300:ILE:HG22	2.02	0.41
3:A:380:LEU:HB2	3:A:390:SER:HB3	2.01	0.41
3:A:565:ILE:C	3:A:567:THR:N	2.74	0.41
3:A:606:TRP:CD1	3:A:606:TRP:C	2.93	0.41
3:A:609:ARG:HD2	3:A:633:LEU:O	2.19	0.41
1:L:5:THR:O	1:L:5:THR:HG23	2.19	0.41
2:H:115:LEU:HD11	2:H:117:THR:HG23	2.00	0.41
3:A:313:PHE:CE2	3:A:315:LEU:HG	2.55	0.41
3:A:352:TYR:CE1	3:A:354:LEU:HD12	2.55	0.41
3:A:413:TYR:CG	3:A:414:THR:N	2.89	0.41
1:L:19:VAL:HG12	1:L:20:THR:N	2.34	0.41
2:H:37:HIS:ND1	2:H:52:TYR:HB3	2.36	0.41
3:A:265:GLY:O	3:A:266:ALA:C	2.58	0.41
3:A:452:SER:CB	3:A:455:THR:O	2.66	0.41
3:A:552:VAL:HG22	3:A:556:LYS:CG	2.50	0.41
1:L:22:THR:CG2	1:L:23:CYS:N	2.84	0.41
1:L:83:VAL:HG12	1:L:106:ILE:CA	2.50	0.41
3:A:731:LEU:HD23	3:A:731:LEU:HA	1.77	0.41
1:L:13:VAL:O	1:L:106:ILE:HG23	2.20	0.41
3:A:272:TYR:C	3:A:272:TYR:CD1	2.94	0.41
3:A:405:THR:CG2	3:A:406:GLY:N	2.82	0.41
3:A:416:GLU:O	3:A:417:ASP:C	2.58	0.41
3:A:422:SER:HB2	3:A:424:TYR:CE2	2.55	0.41
3:A:484:ARG:NH1	3:A:575:GLN:HB3	2.35	0.41
3:A:426:HIS:HA	3:A:733:ARG:O	2.20	0.41

Continued on next page...

Continued from previous page...

Atom-1	Atom-2	Interatomic distance (Å)	Clash overlap (Å)
3:A:565:ILE:HG21	3:A:569:ASN:CB	2.47	0.41
2:H:9:GLY:HA3	2:H:21:LEU:HD23	2.03	0.41
2:H:12:LEU:HD11	2:H:154:PRO:CG	2.51	0.41
2:H:19:LEU:HD13	2:H:116:VAL:HG11	2.03	0.41
2:H:143:VAL:O	2:H:189:THR:HA	2.20	0.41
3:A:300:ILE:CD1	3:A:728:THR:HA	2.51	0.41
3:A:300:ILE:HG13	3:A:728:THR:HA	2.02	0.41
3:A:423:SER:HA	3:A:728:THR:HG23	2.03	0.41
2:H:46:LYS:HD3	2:H:46:LYS:H	1.86	0.41
3:A:342:VAL:CG1	3:A:343:PHE:N	2.83	0.41
3:A:701:THR:HG22	3:A:702:SER:C	2.41	0.41
3:A:257:TYR:OH	3:A:396:GLU:OE1	2.35	0.40
3:A:478:LEU:O	3:A:604:MET:HA	2.21	0.40
3:A:526:HIS:NE2	3:A:531:GLU:CD	2.74	0.40
3:A:598:GLN:OE1	3:A:598:GLN:CA	2.69	0.40
1:L:32:ARG:CD	1:L:92:TRP:CE3	2.98	0.40
2:H:153:PHE:HB3	2:H:154:PRO:HD3	2.04	0.40
3:A:314:LYS:HA	3:A:409:PHE:O	2.21	0.40
3:A:509:HIS:HB2	3:A:514:ASP:CA	2.48	0.40
3:A:522:ALA:CB	3:A:609:ARG:HG2	2.43	0.40
1:L:62:PHE:CD1	1:L:75:ILE:HG12	2.57	0.40
3:A:365:PHE:HA	3:A:366:PRO:HD3	1.96	0.40
3:A:486:GLN:HB3	3:A:536:GLN:OE1	2.21	0.40
1:L:48:ILE:HD12	1:L:73:LEU:HD13	2.02	0.40
3:A:254:ASN:O	3:A:255:HIS:CB	2.70	0.40
3:A:262:SER:HB3	3:A:272:TYR:H	1.86	0.40
3:A:301:ASN:CG	3:A:699:GLN:NE2	2.75	0.40
3:A:304:TRP:HB3	3:A:687:GLN:HE21	1.87	0.40

There are no symmetry-related clashes.

5.3 Torsion angles [i](#)

5.3.1 Protein backbone [i](#)

In the following table, the Percentiles column shows the percent Ramachandran outliers of the chain as a percentile score with respect to all PDB entries followed by that with respect to all EM entries.

The Analysed column shows the number of residues for which the backbone conformation was analysed, and the total number of residues.

Mol	Chain	Analysed	Favoured	Allowed	Outliers	Percentiles	
1	L	210/214 (98%)	199 (95%)	9 (4%)	2 (1%)	13	49
2	H	214/218 (98%)	197 (92%)	10 (5%)	7 (3%)	3	21
3	A	517/519 (100%)	402 (78%)	85 (16%)	30 (6%)	1	14
All	All	941/951 (99%)	798 (85%)	104 (11%)	39 (4%)	4	18

All (39) Ramachandran outliers are listed below:

Mol	Chain	Res	Type
1	L	7	SER
2	H	3	VAL
2	H	5	LEU
2	H	45	ASN
3	A	264	SER
3	A	266	ALA
3	A	293	PRO
3	A	336	LEU
3	A	346	SER
3	A	470	ILE
3	A	493	ALA
3	A	519	PRO
3	A	566	ARG
3	A	690	ASN
3	A	219	ASP
3	A	329	THR
3	A	338	SER
3	A	610	ASP
3	A	656	ASN
3	A	715	ASP
2	H	153	PHE
3	A	239	VAL
3	A	354	LEU
3	A	360	GLY
3	A	484	ARG
3	A	498	SER
3	A	554	ILE
3	A	564	GLU
1	L	84	ALA
2	H	156	SER
3	A	431	ASP
3	A	492	SER
3	A	524	ALA
3	A	367	ALA

Continued on next page...

Continued from previous page...

Mol	Chain	Res	Type
3	A	612	TYR
2	H	15	PRO
2	H	195	TRP
3	A	351	PRO
3	A	399	PRO

5.3.2 Protein sidechains ⓘ

In the following table, the Percentiles column shows the percent sidechain outliers of the chain as a percentile score with respect to all PDB entries followed by that with respect to all EM entries.

The Analysed column shows the number of residues for which the sidechain conformation was analysed, and the total number of residues.

Mol	Chain	Analysed	Rotameric	Outliers	Percentiles	
1	L	190/190 (100%)	185 (97%)	5 (3%)	41	59
2	H	193/193 (100%)	189 (98%)	4 (2%)	48	66
3	A	459/459 (100%)	358 (78%)	101 (22%)	1	5
All	All	842/842 (100%)	732 (87%)	110 (13%)	6	14

All (110) residues with a non-rotameric sidechain are listed below:

Mol	Chain	Res	Type
1	L	4	MET
1	L	42	ASN
1	L	90	GLN
1	L	107	LYS
1	L	214	CYS
2	H	14	LYS
2	H	139	THR
2	H	155	GLU
2	H	184	MET
3	A	219	ASP
3	A	221	VAL
3	A	225	SER
3	A	233	THR
3	A	235	MET
3	A	239	VAL
3	A	243	SER
3	A	245	ARG

Continued on next page...

Continued from previous page...

Mol	Chain	Res	Type
3	A	256	LEU
3	A	263	GLN
3	A	283	ASP
3	A	288	HIS
3	A	293	PRO
3	A	299	LEU
3	A	302	ASN
3	A	304	TRP
3	A	310	ARG
3	A	311	LEU
3	A	312	ASN
3	A	313	PHE
3	A	321	LYS
3	A	323	VAL
3	A	327	ASP
3	A	331	THR
3	A	340	VAL
3	A	343	PHE
3	A	344	THR
3	A	345	ASP
3	A	347	GLU
3	A	354	LEU
3	A	368	ASP
3	A	379	THR
3	A	394	CYS
3	A	395	LEU
3	A	397	TYR
3	A	400	SER
3	A	401	GLN
3	A	410	THR
3	A	411	PHE
3	A	412	SER
3	A	427	SER
3	A	433	LEU
3	A	434	MET
3	A	439	ASP
3	A	442	LEU
3	A	445	LEU
3	A	446	SER
3	A	449	ASN
3	A	450	THR
3	A	454	THR

Continued on next page...

Continued from previous page...

Mol	Chain	Res	Type
3	A	456	THR
3	A	457	GLN
3	A	460	LEU
3	A	469	ASP
3	A	476	ASN
3	A	478	LEU
3	A	482	CYS
3	A	486	GLN
3	A	489	SER
3	A	499	GLU
3	A	500	TYR
3	A	503	THR
3	A	506	THR
3	A	508	TYR
3	A	509	HIS
3	A	513	ARG
3	A	527	LYS
3	A	530	GLU
3	A	540	LEU
3	A	545	GLN
3	A	550	THR
3	A	552	VAL
3	A	553	ASP
3	A	554	ILE
3	A	555	GLU
3	A	561	ASP
3	A	563	GLU
3	A	587	ASN
3	A	595	VAL
3	A	607	GLN
3	A	609	ARG
3	A	611	VAL
3	A	631	SER
3	A	633	LEU
3	A	644	PRO
3	A	645	GLN
3	A	650	ASN
3	A	651	THR
3	A	659	THR
3	A	666	PHE
3	A	668	SER
3	A	677	GLN

Continued on next page...

Continued from previous page...

Mol	Chain	Res	Type
3	A	696	PRO
3	A	699	GLN
3	A	702	SER
3	A	703	ASN
3	A	705	ASN
3	A	716	THR
3	A	728	THR
3	A	732	THR
3	A	735	LEU

Sometimes sidechains can be flipped to improve hydrogen bonding and reduce clashes. All (21) such sidechains are listed below:

Mol	Chain	Res	Type
1	L	3	GLN
1	L	30	HIS
1	L	42	ASN
1	L	137	ASN
1	L	166	GLN
1	L	198	HIS
2	H	112	GLN
3	A	263	GLN
3	A	297	GLN
3	A	312	ASN
3	A	326	ASN
3	A	335	ASN
3	A	341	GLN
3	A	385	GLN
3	A	407	ASN
3	A	449	ASN
3	A	607	GLN
3	A	650	ASN
3	A	672	GLN
3	A	695	ASN
3	A	699	GLN

5.3.3 RNA ⓘ

There are no RNA molecules in this entry.

5.4 Non-standard residues in protein, DNA, RNA chains [i](#)

There are no non-standard protein/DNA/RNA residues in this entry.

5.5 Carbohydrates [i](#)

There are no oligosaccharides in this entry.

5.6 Ligand geometry [i](#)

There are no ligands in this entry.

5.7 Other polymers [i](#)

There are no such residues in this entry.

5.8 Polymer linkage issues [i](#)

The following chains have linkage breaks:

Mol	Chain	Number of breaks
1	L	4
2	H	1

All chain breaks are listed below:

Model	Chain	Residue-1	Atom-1	Residue-2	Atom-2	Distance (Å)
1	L	107:LYS	C	108:ARG	N	6.89
1	H	120:ALA	C	121:ALA	N	4.06
1	L	213:GLU	C	214:CYS	N	1.67
1	L	211:ARG	C	212:ASN	N	1.15
1	L	212:ASN	C	213:GLU	N	1.15

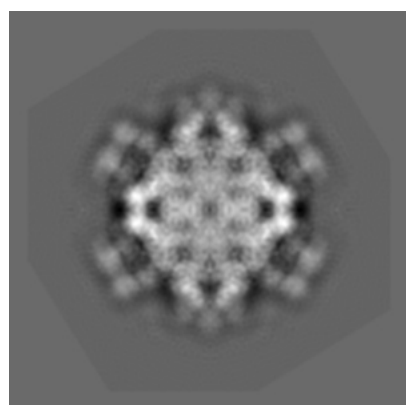
6 Map visualisation [i](#)

This section contains visualisations of the EMDB entry EMD-5424. These allow visual inspection of the internal detail of the map and identification of artifacts.

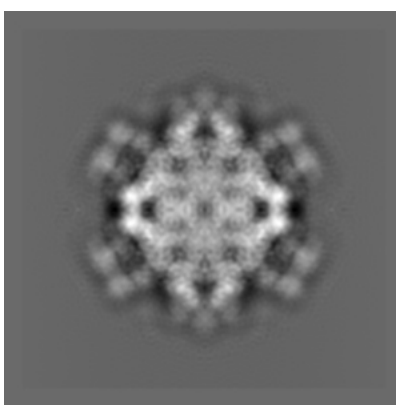
No raw map or half-maps were deposited for this entry and therefore no images, graphs, etc. pertaining to the raw map can be shown.

6.1 Orthogonal projections [i](#)

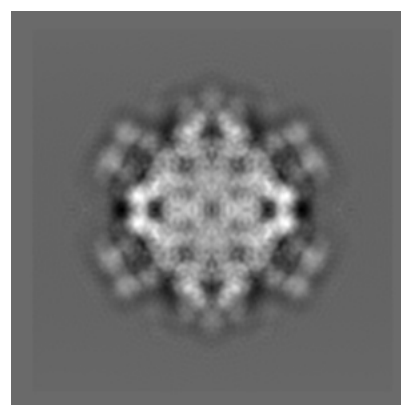
6.1.1 Primary map



X



Y

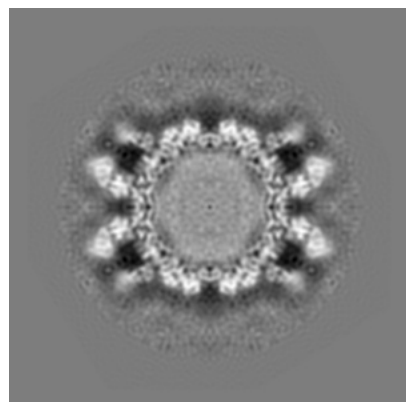


Z

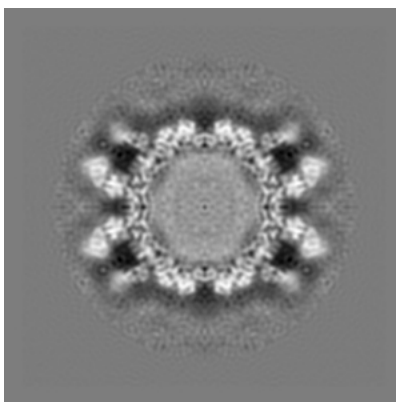
The images above show the map projected in three orthogonal directions.

6.2 Central slices [i](#)

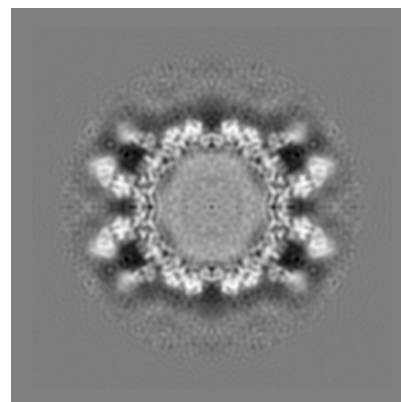
6.2.1 Primary map



X Index: 120



Y Index: 120

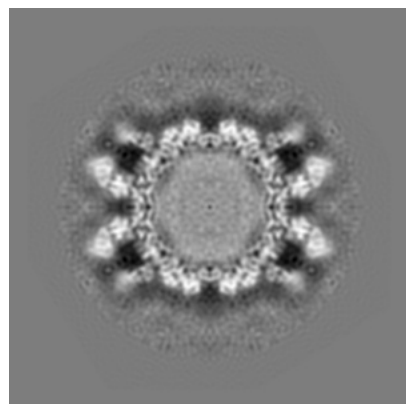


Z Index: 120

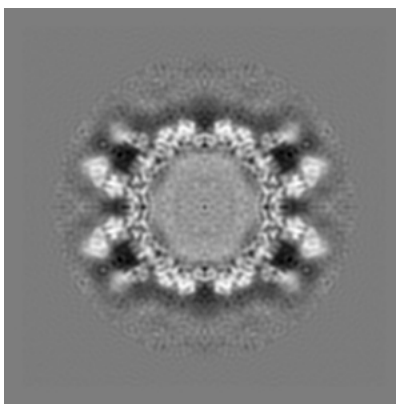
The images above show central slices of the map in three orthogonal directions.

6.3 Largest variance slices [i](#)

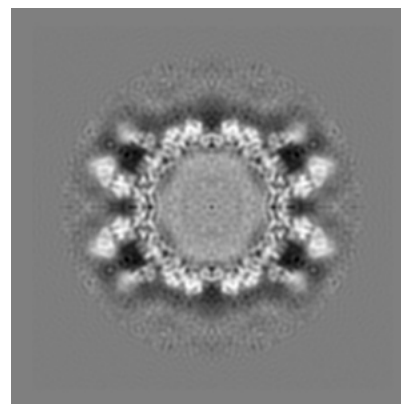
6.3.1 Primary map



X Index: 120



Y Index: 120

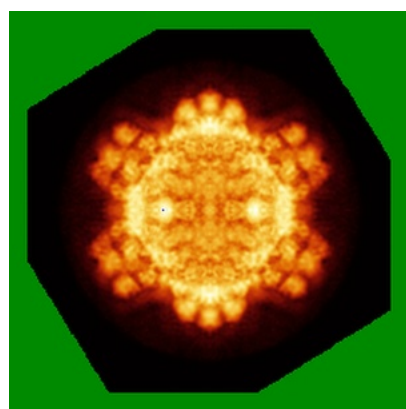


Z Index: 120

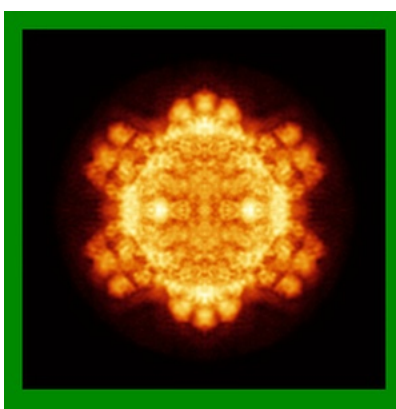
The images above show the largest variance slices of the map in three orthogonal directions.

6.4 Orthogonal standard-deviation projections (False-color) [i](#)

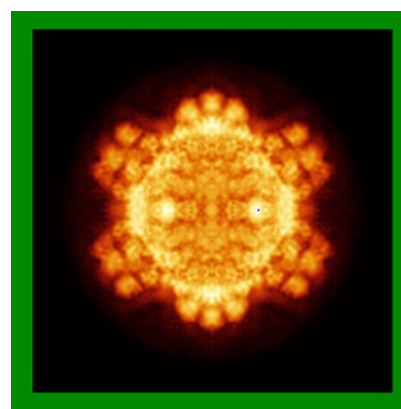
6.4.1 Primary map



X



Y

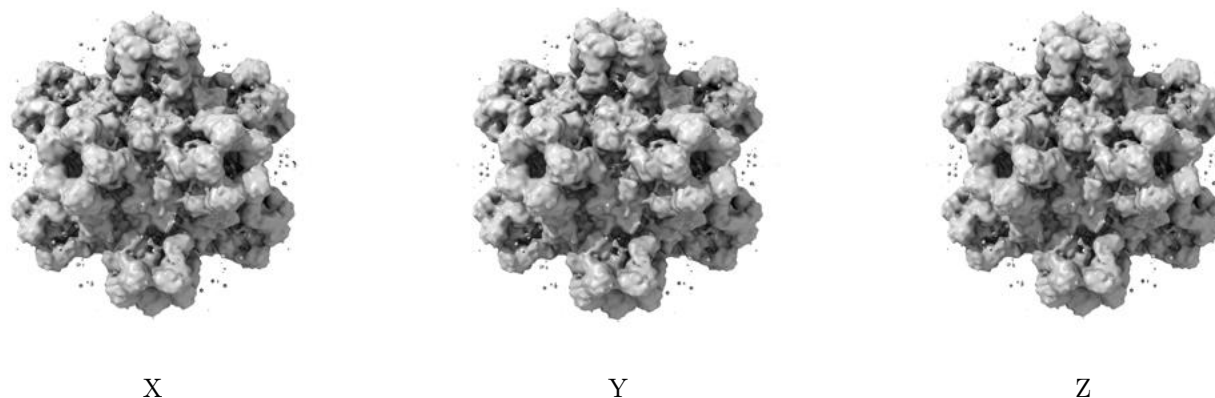


Z

The images above show the map standard deviation projections with false color in three orthogonal directions. Minimum values are shown in green, max in blue, and dark to light orange shades represent small to large values respectively.

6.5 Orthogonal surface views [i](#)

6.5.1 Primary map



The images above show the 3D surface view of the map at the recommended contour level 1.34. These images, in conjunction with the slice images, may facilitate assessment of whether an appropriate contour level has been provided.

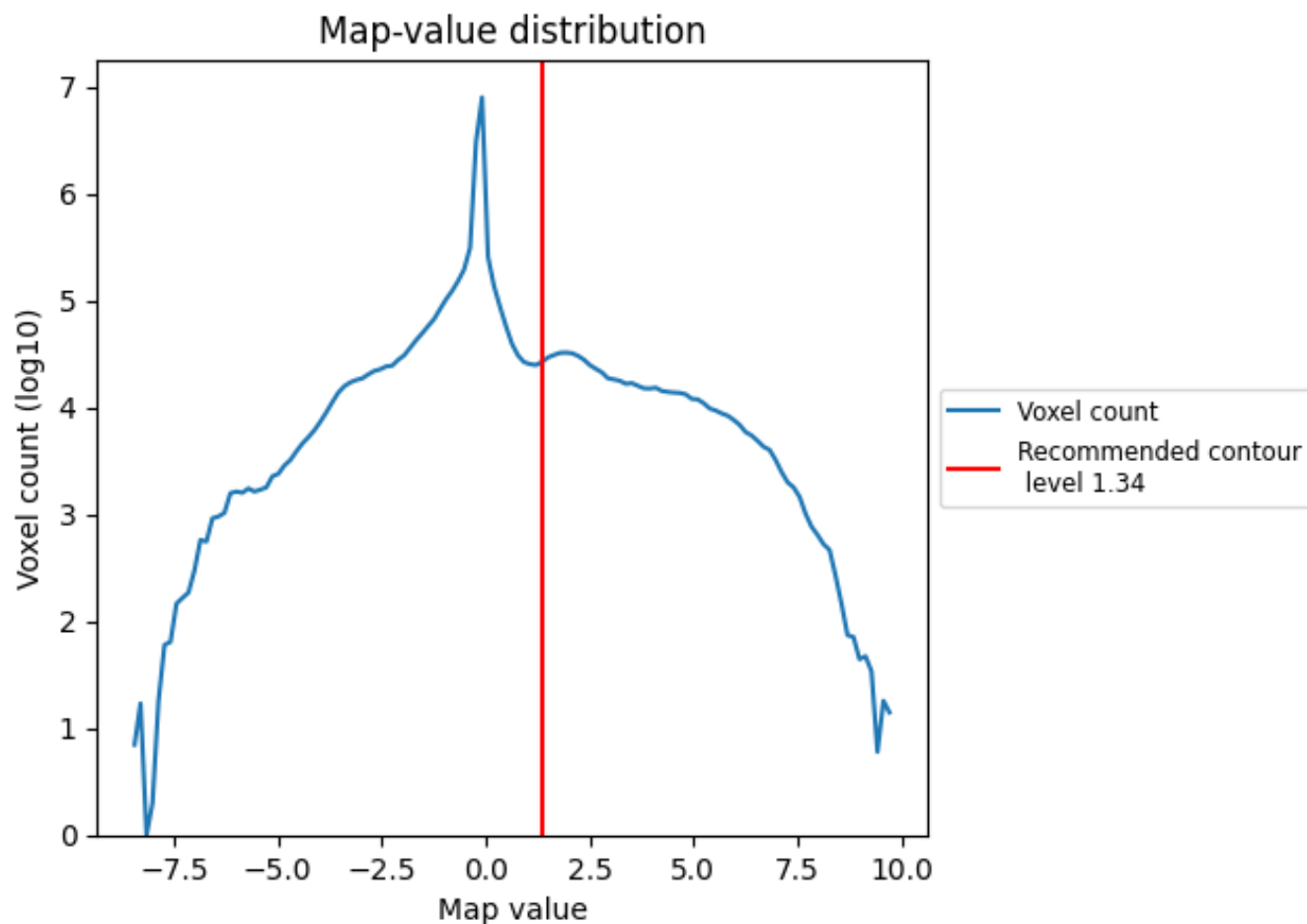
6.6 Mask visualisation [i](#)

This section was not generated. No masks/segmentation were deposited.

7 Map analysis [i](#)

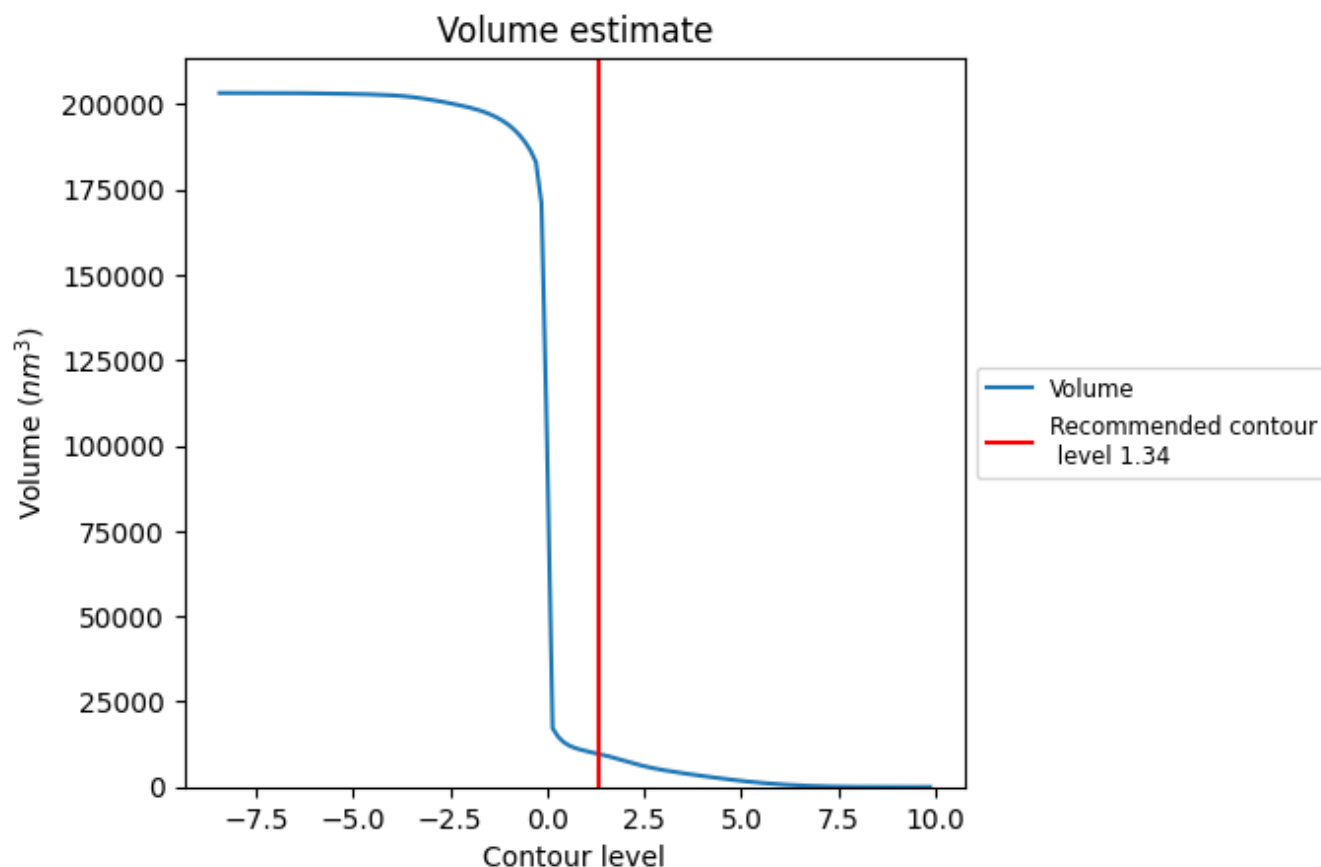
This section contains the results of statistical analysis of the map.

7.1 Map-value distribution [i](#)



The map-value distribution is plotted in 128 intervals along the x-axis. The y-axis is logarithmic. A spike in this graph at zero usually indicates that the volume has been masked.

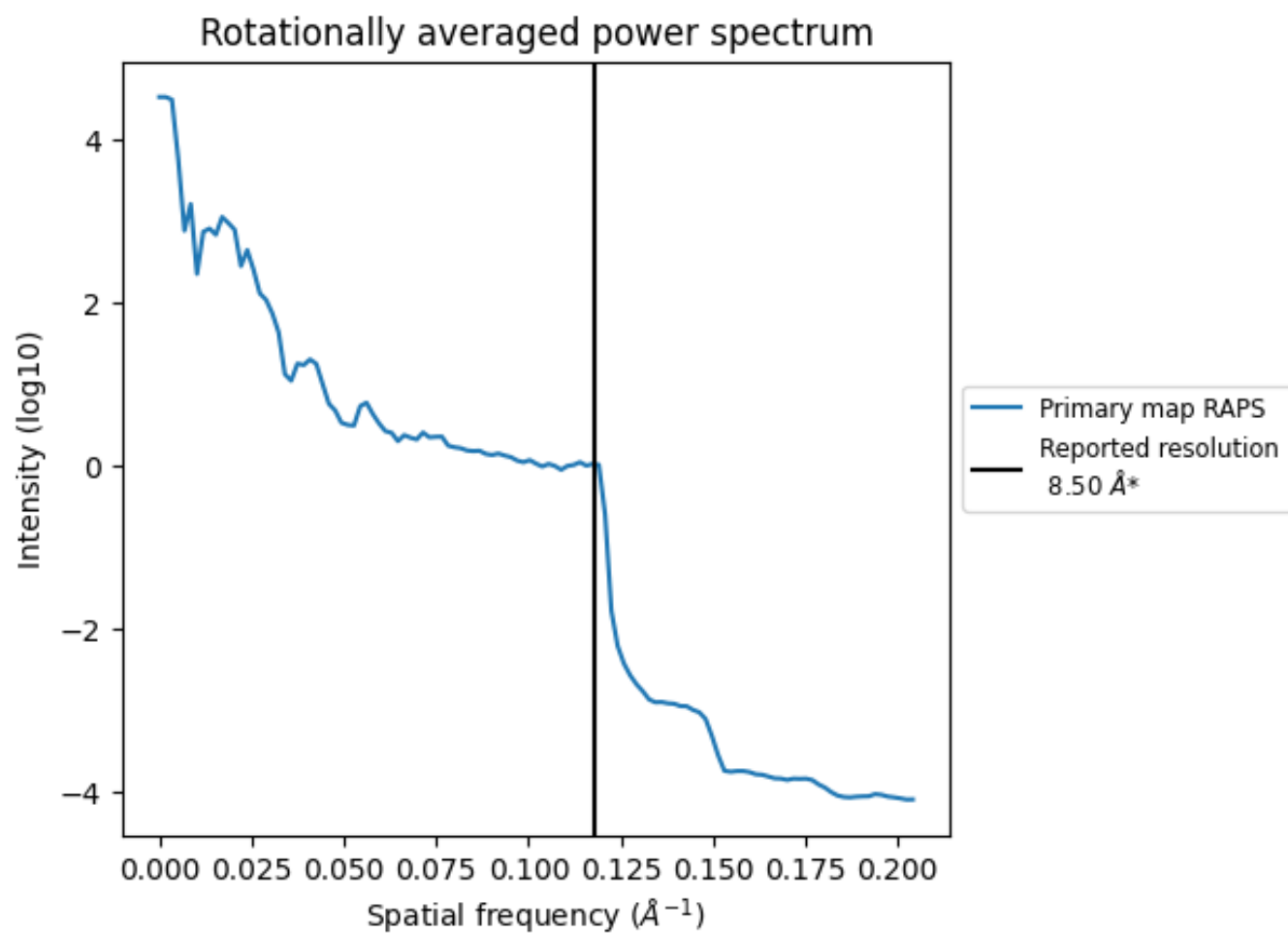
7.2 Volume estimate [i](#)



The volume at the recommended contour level is 9636 nm³; this corresponds to an approximate mass of 8705 kDa.

The volume estimate graph shows how the enclosed volume varies with the contour level. The recommended contour level is shown as a vertical line and the intersection between the line and the curve gives the volume of the enclosed surface at the given level.

7.3 Rotationally averaged power spectrum ⓘ



*Reported resolution corresponds to spatial frequency of 0.118 Å⁻¹

8 Fourier-Shell correlation

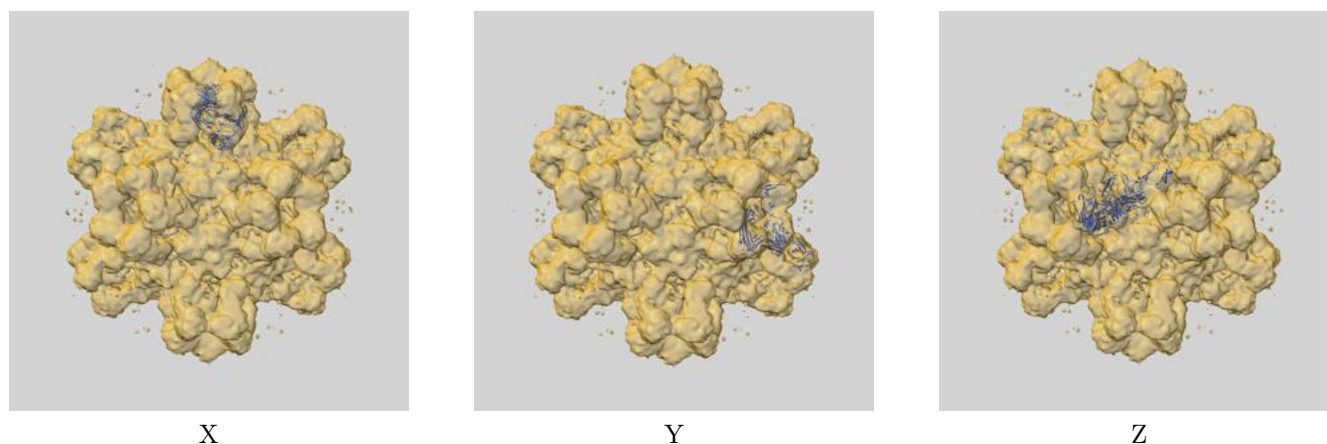
This section was not generated. No FSC curve or half-maps provided.

9 Map-model fit [i](#)

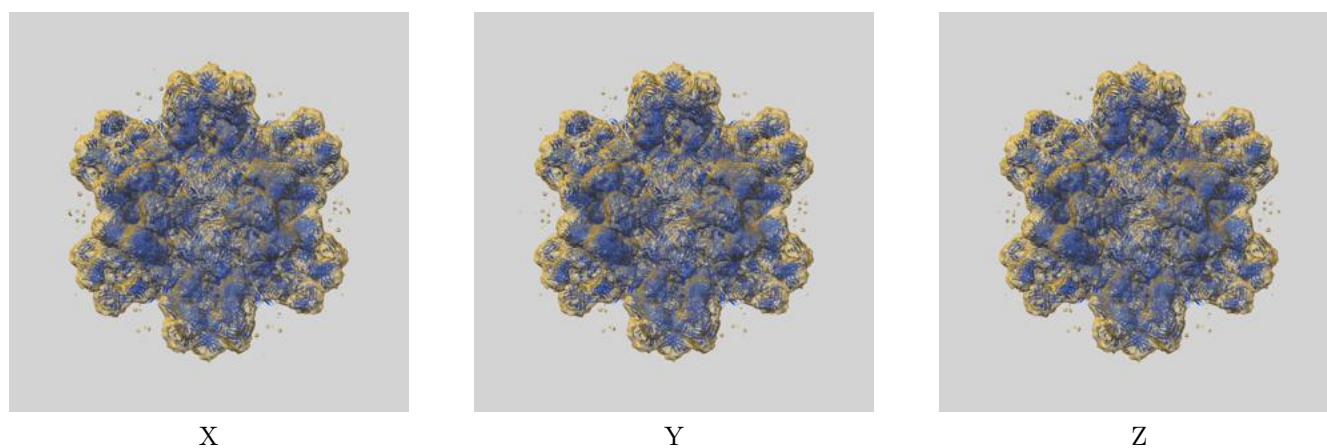
This section contains information regarding the fit between EMDB map EMD-5424 and PDB model 3J1S. Per-residue inclusion information can be found in section 3 on page 4.

9.1 Map-model overlays

9.1.1 Map-model overlay [i](#)

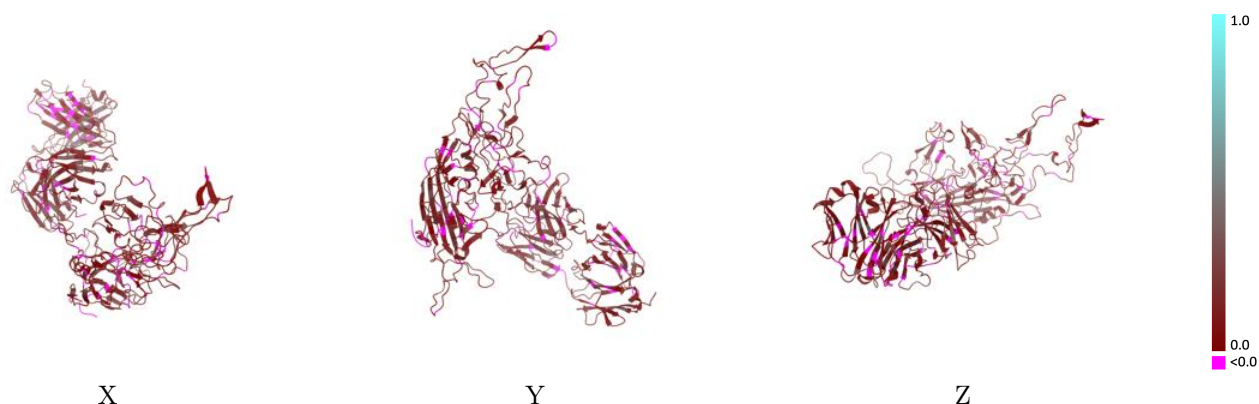


9.1.2 Map-model assembly overlay [i](#)



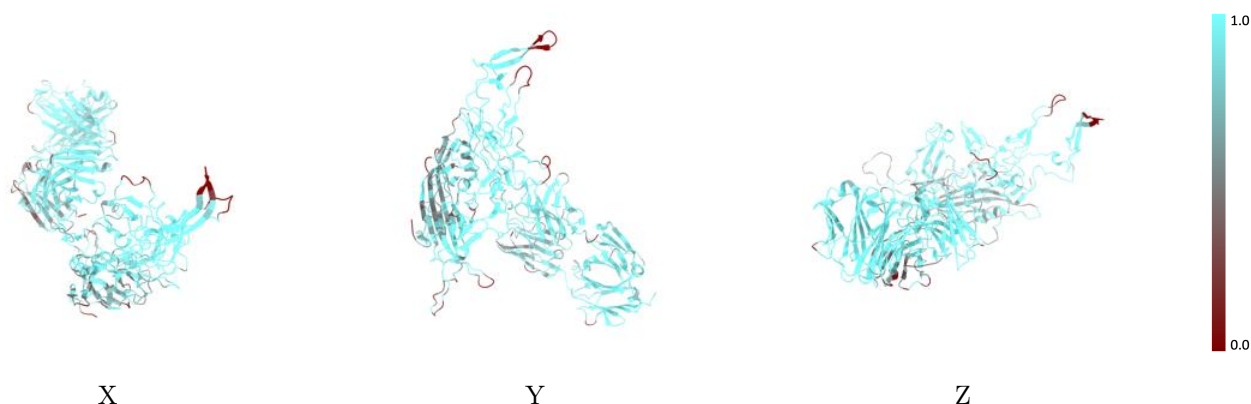
The images above show the 3D surface view of the map at the recommended contour level 1.34 at 50% transparency in yellow overlaid with a ribbon representation of the model coloured in blue. These images allow for the visual assessment of the quality of fit between the atomic model and the map.

9.2 Q-score mapped to coordinate model [i](#)



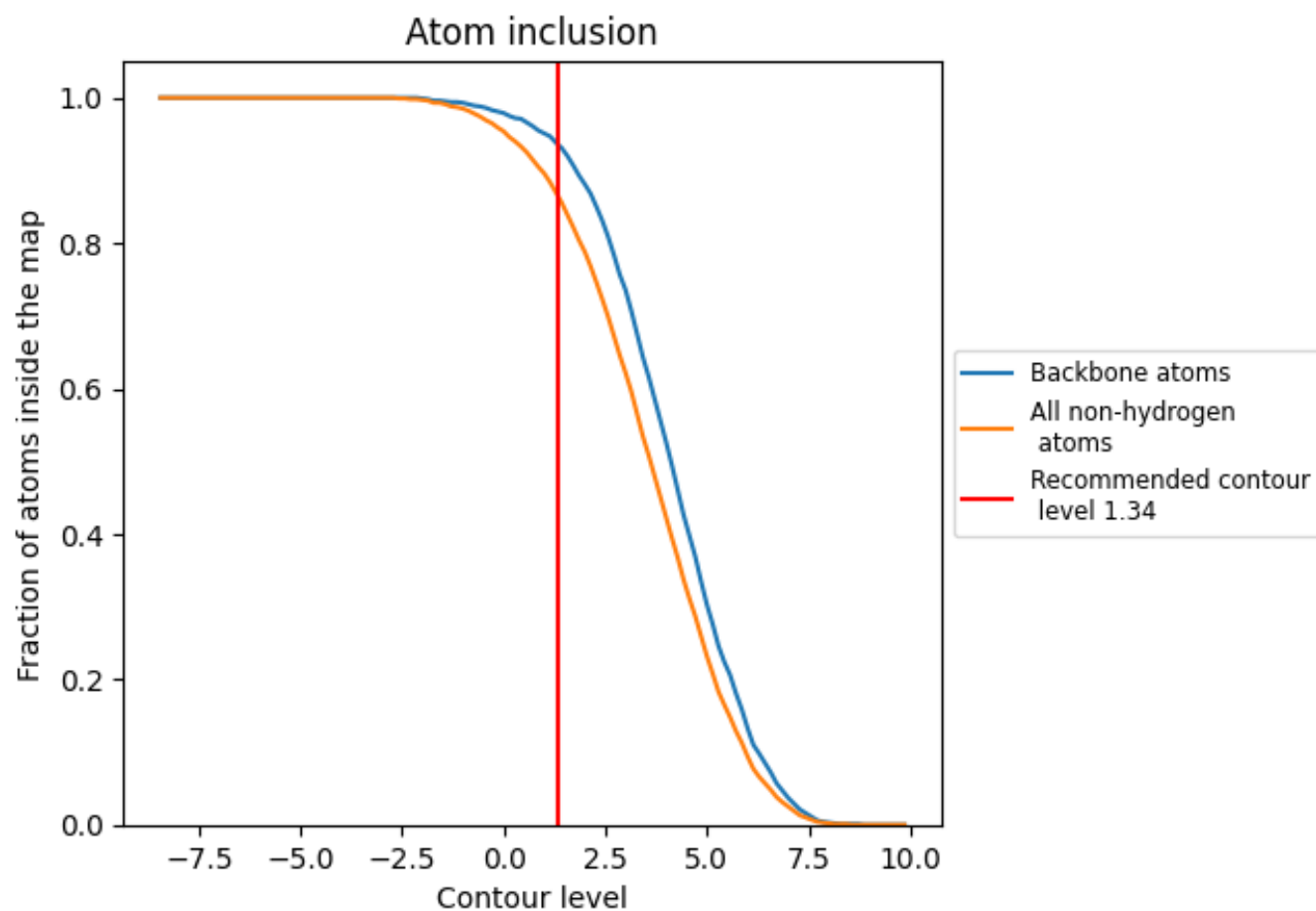
The images above show the model with each residue coloured according to its Q-score. This shows their resolvability in the map with higher Q-score values reflecting better resolvability. Please note: Q-score is calculating the resolvability of atoms, and thus high values are only expected at resolutions at which atoms can be resolved. Low Q-score values may therefore be expected for many entries.

9.3 Atom inclusion mapped to coordinate model [i](#)



The images above show the model with each residue coloured according to its atom inclusion. This shows to what extent they are inside the map at the recommended contour level (1.34).

9.4 Atom inclusion [i](#)



At the recommended contour level, 94% of all backbone atoms, 86% of all non-hydrogen atoms, are inside the map.

9.5 Map-model fit summary ⓘ

The table lists the average atom inclusion at the recommended contour level (1.34) and Q-score for the entire model and for each chain.

Chain	Atom inclusion	Q-score
All	<div></div> 0.8640	<div></div> 0.1170
A	<div></div> 0.8260	<div></div> 0.1190
H	<div></div> 0.9440	<div></div> 0.1090
L	<div></div> 0.8800	<div></div> 0.1210

