



wwPDB EM Validation Summary Report ⓘ

Jul 28, 2025 – 12:15 PM JST

PDB ID : 9J05 / pdb_00009j05
EMDB ID : EMD-61049
Title : Apo state purinergic receptor P2Y14-BRIL/PPTN/1B3 Fab-4/9Glue
Authors : Wang, T.X.; Tang, W.Q.
Deposited on : 2024-08-02
Resolution : 3.20 Å(reported)

This is a wwPDB EM Validation Summary Report for a publicly released PDB entry.

We welcome your comments at validation@mail.wwpdb.org

A user guide is available at

<https://www.wwpdb.org/validation/2017/EMValidationReportHelp>

with specific help available everywhere you see the ⓘ symbol.

The types of validation reports are described at

<http://www.wwpdb.org/validation/2017/FAQs#types>.

The following versions of software and data (see [references ⓘ](#)) were used in the production of this report:

EMDB validation analysis : 0.0.1.dev126
MolProbity : 4-5-2 with Phenix2.0rc1
Percentile statistics : 20231227.v01 (using entries in the PDB archive December 27th 2023)
MapQ : 1.9.13
Ideal geometry (proteins) : Engh & Huber (2001)
Ideal geometry (DNA, RNA) : Parkinson et al. (1996)
Validation Pipeline (wwPDB-VP) : 2.45.1

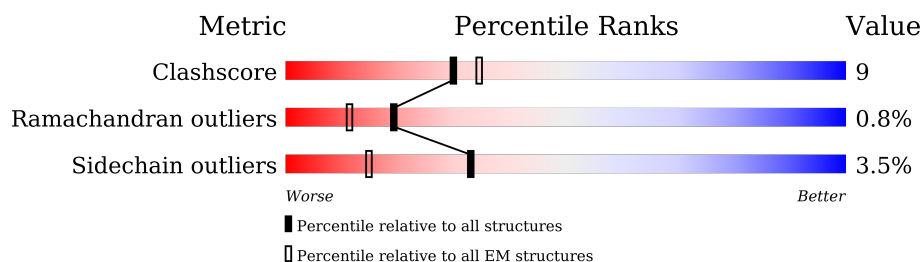
1 Overall quality at a glance

The following experimental techniques were used to determine the structure:

ELECTRON MICROSCOPY

The reported resolution of this entry is 3.20 Å.

Percentile scores (ranging between 0-100) for global validation metrics of the entry are shown in the following graphic. The table shows the number of entries on which the scores are based.



Metric	Whole archive (#Entries)	EM structures (#Entries)
Clashscore	210492	15764
Ramachandran outliers	207382	16835
Sidechain outliers	206894	16415

The table below summarises the geometric issues observed across the polymeric chains and their fit to the map. The red, orange, yellow and green segments of the bar indicate the fraction of residues that contain outliers for ≥ 3 , 2, 1 and 0 types of geometric quality criteria respectively. A grey segment represents the fraction of residues that are not modelled. The numeric value for each fraction is indicated below the corresponding segment, with a dot representing fractions $\leq 5\%$. The upper red bar (where present) indicates the fraction of residues that have poor fit to the EM map (all-atom inclusion $< 40\%$). The numeric value is given above the bar.

Mol	Chain	Length	Quality of chain
1	A	506	
2	B	284	
3	C	256	

2 Entry composition

There are 3 unique types of molecules in this entry. The entry contains 5911 atoms, of which 0 are hydrogens and 0 are deuteriums.

In the tables below, the AltConf column contains the number of residues with at least one atom in alternate conformation and the Trace column contains the number of residues modelled with at most 2 atoms.

- Molecule 1 is a protein called P2Y purinoceptor 14,Soluble cytochrome b562.

Mol	Chain	Residues	Atoms					AltConf	Trace
1	A	381	Total	C	N	O	S	0	0
			2754	1784	463	496	11		

There are 119 discrepancies between the modelled and reference sequences:

Chain	Residue	Modelled	Actual	Comment	Reference
A	-64	SER	-	expression tag	UNP Q15391
A	-63	PHE	-	expression tag	UNP Q15391
A	-62	VAL	-	expression tag	UNP Q15391
A	-61	ILE	-	expression tag	UNP Q15391
A	-60	LYS	-	expression tag	UNP Q15391
A	-59	LYS	-	expression tag	UNP Q15391
A	-58	PRO	-	expression tag	UNP Q15391
A	-57	ILE	-	expression tag	UNP Q15391
A	-56	ASN	-	expression tag	UNP Q15391
A	-55	ILE	-	expression tag	UNP Q15391
A	-54	PRO	-	expression tag	UNP Q15391
A	-53	ASP	-	expression tag	UNP Q15391
A	-52	TYR	-	expression tag	UNP Q15391
A	-51	SER	-	expression tag	UNP Q15391
A	-50	TYR	-	expression tag	UNP Q15391
A	-49	ARG	-	expression tag	UNP Q15391
A	-48	PRO	-	expression tag	UNP Q15391
A	-47	THR	-	expression tag	UNP Q15391
A	-46	ILE	-	expression tag	UNP Q15391
A	-45	GLY	-	expression tag	UNP Q15391
A	-44	ARG	-	expression tag	UNP Q15391
A	-43	GLY	-	expression tag	UNP Q15391
A	-42	SER	-	expression tag	UNP Q15391
A	-41	MET	-	expression tag	UNP Q15391
A	-40	LYS	-	expression tag	UNP Q15391
A	-39	THR	-	expression tag	UNP Q15391
A	-38	ILE	-	expression tag	UNP Q15391
A	-37	ILE	-	expression tag	UNP Q15391

Continued on next page...

Continued from previous page...

Chain	Residue	Modelled	Actual	Comment	Reference
A	-36	ALA	-	expression tag	UNP Q15391
A	-35	LEU	-	expression tag	UNP Q15391
A	-34	SER	-	expression tag	UNP Q15391
A	-33	TYR	-	expression tag	UNP Q15391
A	-32	ILE	-	expression tag	UNP Q15391
A	-31	PHE	-	expression tag	UNP Q15391
A	-30	CYS	-	expression tag	UNP Q15391
A	-29	LEU	-	expression tag	UNP Q15391
A	-28	VAL	-	expression tag	UNP Q15391
A	-27	PHE	-	expression tag	UNP Q15391
A	-26	ALA	-	expression tag	UNP Q15391
A	-25	HIS	-	expression tag	UNP Q15391
A	-24	HIS	-	expression tag	UNP Q15391
A	-23	HIS	-	expression tag	UNP Q15391
A	-22	HIS	-	expression tag	UNP Q15391
A	-21	HIS	-	expression tag	UNP Q15391
A	-20	HIS	-	expression tag	UNP Q15391
A	-19	HIS	-	expression tag	UNP Q15391
A	-18	HIS	-	expression tag	UNP Q15391
A	-17	HIS	-	expression tag	UNP Q15391
A	-16	HIS	-	expression tag	UNP Q15391
A	-15	ASP	-	expression tag	UNP Q15391
A	-14	TYR	-	expression tag	UNP Q15391
A	-13	LYS	-	expression tag	UNP Q15391
A	-12	ASP	-	expression tag	UNP Q15391
A	-11	ASP	-	expression tag	UNP Q15391
A	-10	ASP	-	expression tag	UNP Q15391
A	-9	ASP	-	expression tag	UNP Q15391
A	-8	LYS	-	expression tag	UNP Q15391
A	-7	LEU	-	expression tag	UNP Q15391
A	-6	GLU	-	expression tag	UNP Q15391
A	-5	VAL	-	expression tag	UNP Q15391
A	-4	LEU	-	expression tag	UNP Q15391
A	-3	PHE	-	expression tag	UNP Q15391
A	-2	GLN	-	expression tag	UNP Q15391
A	-1	GLY	-	expression tag	UNP Q15391
A	0	PRO	-	expression tag	UNP Q15391
A	1	ALA	-	expression tag	UNP Q15391
A	224	TRP	MET	conflict	UNP P0ABE7
A	?	-	THR	deletion	UNP P0ABE7
A	?	-	PRO	deletion	UNP P0ABE7
A	?	-	PRO	deletion	UNP P0ABE7

Continued on next page...

Continued from previous page...

Chain	Residue	Modelled	Actual	Comment	Reference
A	?	-	LYS	deletion	UNP P0ABE7
A	?	-	LEU	deletion	UNP P0ABE7
A	?	-	GLU	deletion	UNP P0ABE7
A	?	-	ASP	deletion	UNP P0ABE7
A	?	-	LYS	deletion	UNP P0ABE7
A	262	GLY	-	insertion	UNP P0ABE7
A	263	SER	PRO	conflict	UNP P0ABE7
A	264	GLY	ASP	conflict	UNP P0ABE7
A	312	ILE	HIS	conflict	UNP P0ABE7
A	316	LEU	-	linker	UNP P0ABE7
A	402	LYS	HIS	conflict	UNP Q15391
A	404	ALA	-	expression tag	UNP Q15391
A	405	ALA	-	expression tag	UNP Q15391
A	406	LEU	-	expression tag	UNP Q15391
A	407	LYS	-	expression tag	UNP Q15391
A	408	GLU	-	expression tag	UNP Q15391
A	409	LYS	-	expression tag	UNP Q15391
A	410	ILE	-	expression tag	UNP Q15391
A	411	ALA	-	expression tag	UNP Q15391
A	412	ALA	-	expression tag	UNP Q15391
A	413	LEU	-	expression tag	UNP Q15391
A	414	LYS	-	expression tag	UNP Q15391
A	415	GLU	-	expression tag	UNP Q15391
A	416	LYS	-	expression tag	UNP Q15391
A	417	ILE	-	expression tag	UNP Q15391
A	418	ALA	-	expression tag	UNP Q15391
A	419	ALA	-	expression tag	UNP Q15391
A	420	LEU	-	expression tag	UNP Q15391
A	421	LYS	-	expression tag	UNP Q15391
A	422	GLU	-	expression tag	UNP Q15391
A	423	ALA	-	expression tag	UNP Q15391
A	424	GLU	-	expression tag	UNP Q15391
A	425	GLU	-	expression tag	UNP Q15391
A	426	LYS	-	expression tag	UNP Q15391
A	427	ARG	-	expression tag	UNP Q15391
A	428	ALA	-	expression tag	UNP Q15391
A	429	SER	-	expression tag	UNP Q15391
A	430	ARG	-	expression tag	UNP Q15391
A	431	LEU	-	expression tag	UNP Q15391
A	432	GLU	-	expression tag	UNP Q15391
A	433	GLU	-	expression tag	UNP Q15391
A	434	GLU	-	expression tag	UNP Q15391

Continued on next page...

Continued from previous page...

Chain	Residue	Modelled	Actual	Comment	Reference
A	435	LEU	-	expression tag	UNP Q15391
A	436	ARG	-	expression tag	UNP Q15391
A	437	ARG	-	expression tag	UNP Q15391
A	438	ARG	-	expression tag	UNP Q15391
A	439	LEU	-	expression tag	UNP Q15391
A	440	THR	-	expression tag	UNP Q15391
A	441	GLU	-	expression tag	UNP Q15391

- Molecule 2 is a protein called Antibody 1b3 Fab Heavy chain.

Mol	Chain	Residues	Atoms					AltConf	Trace
2	B	222	Total	C	N	O	S	0	0
			1653	1047	274	326	6		

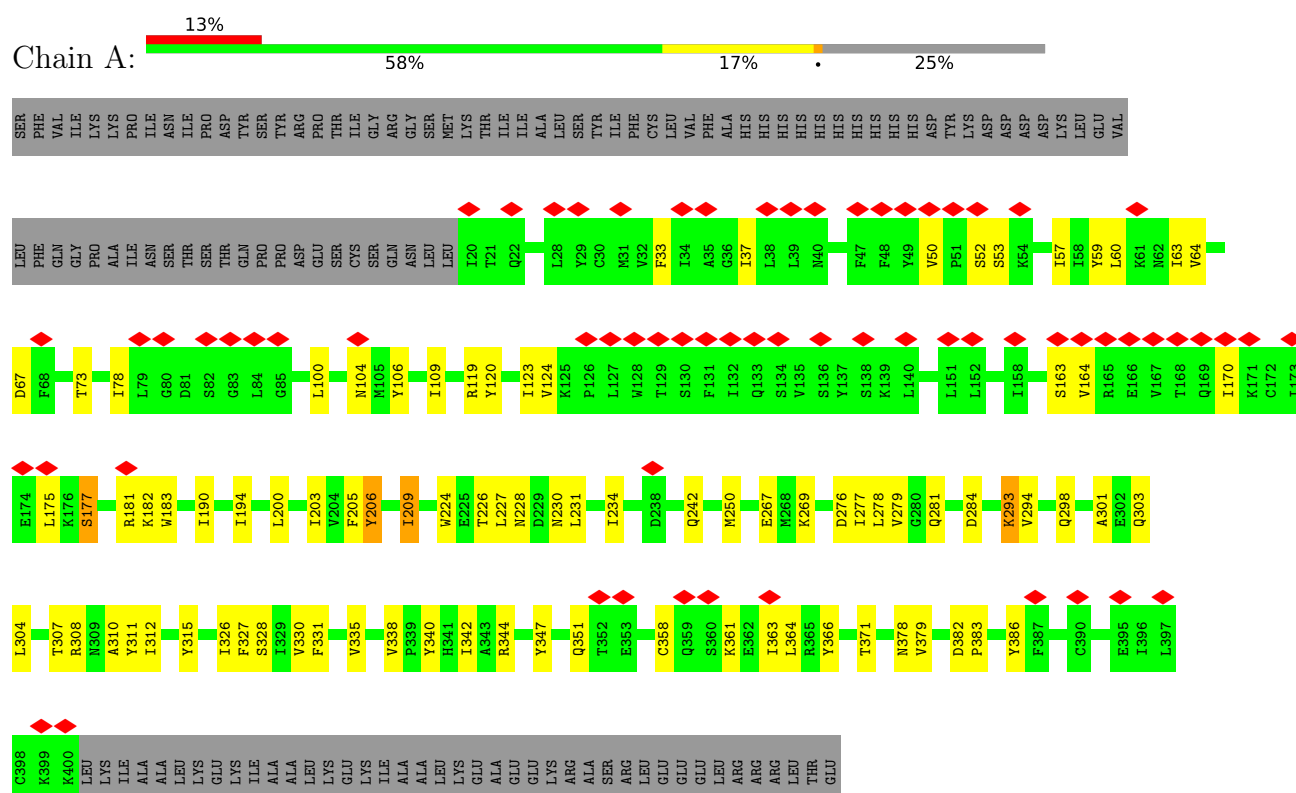
- Molecule 3 is a protein called Antibody 1b3 Fab Light chain.

Mol	Chain	Residues	Atoms					AltConf	Trace
3	C	196	Total	C	N	O	S	0	0
			1504	941	256	302	5		

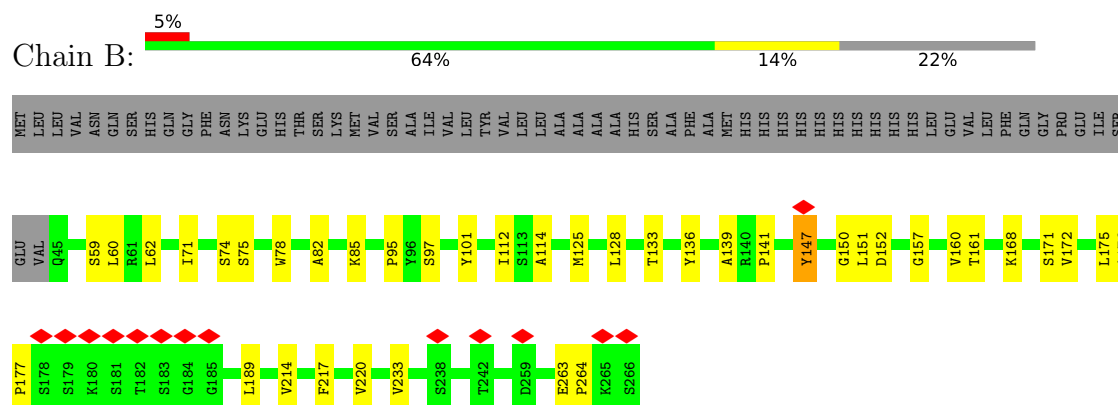
3 Residue-property plots

These plots are drawn for all protein, RNA, DNA and oligosaccharide chains in the entry. The first graphic for a chain summarises the proportions of the various outlier classes displayed in the second graphic. The second graphic shows the sequence view annotated by issues in geometry and atom inclusion in map density. Residues are color-coded according to the number of geometric quality criteria for which they contain at least one outlier: green = 0, yellow = 1, orange = 2 and red = 3 or more. A red diamond above a residue indicates a poor fit to the EM map for this residue (all-atom inclusion < 40%). Stretches of 2 or more consecutive residues without any outlier are shown as a green connector. Residues present in the sample, but not in the model, are shown in grey.

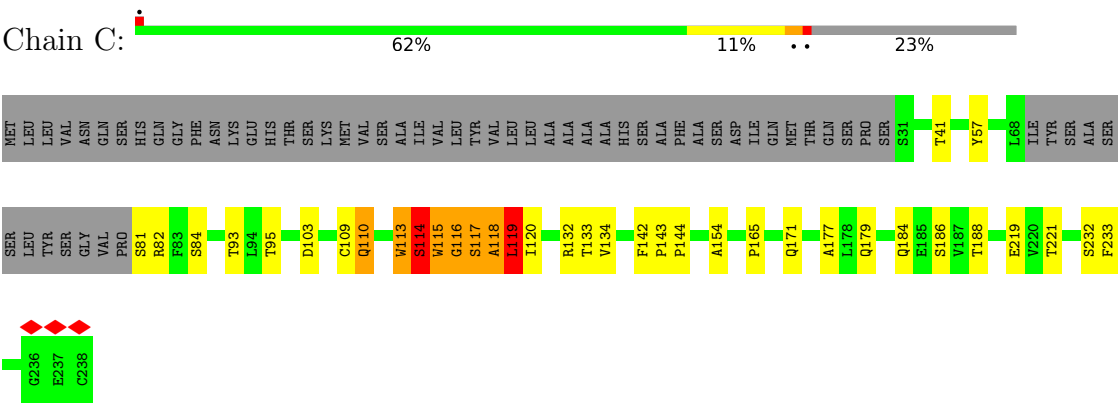
- Molecule 1: P2Y purinoceptor 14,Soluble cytochrome b562



- Molecule 2: Antibody 1b3 Fab Heavy chain



● Molecule 3: Antibody 1b3 Fab Light chain



4 Experimental information

Property	Value	Source
EM reconstruction method	SINGLE PARTICLE	Depositor
Imposed symmetry	POINT, Not provided	
Number of particles used	88888	Depositor
Resolution determination method	FSC 0.143 CUT-OFF	Depositor
CTF correction method	PHASE FLIPPING AND AMPLITUDE CORRECTION	Depositor
Microscope	FEI TITAN KRIOS	Depositor
Voltage (kV)	300	Depositor
Electron dose ($e^-/\text{\AA}^2$)	60	Depositor
Minimum defocus (nm)	1200	Depositor
Maximum defocus (nm)	1600	Depositor
Magnification	Not provided	
Image detector	GATAN K3 (6k x 4k)	Depositor
Maximum map value	6.272	Depositor
Minimum map value	-4.547	Depositor
Average map value	-0.002	Depositor
Map value standard deviation	0.071	Depositor
Recommended contour level	0.32	Depositor
Map size (\AA)	266.24, 266.24, 266.24	wwPDB
Map dimensions	320, 320, 320	wwPDB
Map angles ($^\circ$)	90.0, 90.0, 90.0	wwPDB
Pixel spacing (\AA)	0.83199996, 0.83199996, 0.83199996	Depositor

5 Model quality [i](#)

5.1 Standard geometry [i](#)

The Z score for a bond length (or angle) is the number of standard deviations the observed value is removed from the expected value. A bond length (or angle) with $|Z| > 5$ is considered an outlier worth inspection. RMSZ is the root-mean-square of all Z scores of the bond lengths (or angles).

Mol	Chain	Bond lengths		Bond angles	
		RMSZ	$\# Z > 5$	RMSZ	$\# Z > 5$
1	A	0.33	0/2810	0.57	2/3831 (0.1%)
2	B	0.22	0/1699	0.43	1/2320 (0.0%)
3	C	0.40	0/1536	0.74	13/2082 (0.6%)
All	All	0.33	0/6045	0.58	16/8233 (0.2%)

There are no bond length outliers.

The worst 5 of 16 bond angle outliers are listed below:

Mol	Chain	Res	Type	Atoms	Z	Observed($^{\circ}$)	Ideal($^{\circ}$)
3	C	116	GLY	N-CA-C	-10.03	99.11	115.46
3	C	113	TRP	N-CA-C	-8.32	100.62	111.02
3	C	119	LEU	N-CA-CB	7.45	123.09	110.49
3	C	110	GLN	CB-CA-C	-7.42	98.79	111.41
2	B	172	VAL	N-CA-CB	-7.17	103.07	111.39

There are no chirality outliers.

There are no planarity outliers.

5.2 Too-close contacts [i](#)

In the following table, the Non-H and H(model) columns list the number of non-hydrogen atoms and hydrogen atoms in the chain respectively. The H(added) column lists the number of hydrogen atoms added and optimized by MolProbity. The Clashes column lists the number of clashes within the asymmetric unit, whereas Symm-Clashes lists symmetry-related clashes.

Mol	Chain	Non-H	H(model)	H(added)	Clashes	Symm-Clashes
1	A	2754	0	2549	57	0
2	B	1653	0	1596	28	0
3	C	1504	0	1464	33	0
All	All	5911	0	5609	103	0

The all-atom clashscore is defined as the number of clashes found per 1000 atoms (including hydrogen atoms). The all-atom clashscore for this structure is 9.

The worst 5 of 103 close contacts within the same asymmetric unit are listed below, sorted by their clash magnitude.

Atom-1	Atom-2	Interatomic distance (Å)	Clash overlap (Å)
2:B:150:GLY:HA2	3:C:115:TRP:HZ2	1.32	0.93
3:C:57:TYR:HE2	3:C:110:GLN:HG3	1.40	0.84
1:A:227:LEU:HG	1:A:250:MET:HG2	1.67	0.76
2:B:150:GLY:HA2	3:C:115:TRP:CZ2	2.17	0.76
3:C:119:LEU:C	3:C:120:ILE:HD13	2.16	0.70

There are no symmetry-related clashes.

5.3 Torsion angles [i](#)

5.3.1 Protein backbone [i](#)

In the following table, the Percentiles column shows the percent Ramachandran outliers of the chain as a percentile score with respect to all PDB entries followed by that with respect to all EM entries.

The Analysed column shows the number of residues for which the backbone conformation was analysed, and the total number of residues.

Mol	Chain	Analysed	Favoured	Allowed	Outliers	Percentiles	
1	A	379/506 (75%)	349 (92%)	28 (7%)	2 (0%)	25	60
2	B	220/284 (78%)	211 (96%)	8 (4%)	1 (0%)	25	60
3	C	192/256 (75%)	179 (93%)	10 (5%)	3 (2%)	8	37
All	All	791/1046 (76%)	739 (93%)	46 (6%)	6 (1%)	19	51

5 of 6 Ramachandran outliers are listed below:

Mol	Chain	Res	Type
3	C	119	LEU
3	C	117	SER
3	C	115	TRP
1	A	170	ILE
2	B	147	TYR

5.3.2 Protein sidechains ⓘ

In the following table, the Percentiles column shows the percent sidechain outliers of the chain as a percentile score with respect to all PDB entries followed by that with respect to all EM entries.

The Analysed column shows the number of residues for which the sidechain conformation was analysed, and the total number of residues.

Mol	Chain	Analysed	Rotameric	Outliers	Percentiles	
1	A	253/451 (56%)	241 (95%)	12 (5%)	22	55
2	B	183/238 (77%)	181 (99%)	2 (1%)	70	86
3	C	171/221 (77%)	164 (96%)	7 (4%)	26	59
All	All	607/910 (67%)	586 (96%)	21 (4%)	33	63

5 of 21 residues with a non-rotameric sidechain are listed below:

Mol	Chain	Res	Type
3	C	81	SER
3	C	119	LEU
3	C	232	SER
3	C	186	SER
3	C	114	SER

Sometimes sidechains can be flipped to improve hydrogen bonding and reduce clashes. All (4) such sidechains are listed below:

Mol	Chain	Res	Type
1	A	217	HIS
1	A	223	ASN
1	A	258	GLN
3	C	110	GLN

5.3.3 RNA ⓘ

There are no RNA molecules in this entry.

5.4 Non-standard residues in protein, DNA, RNA chains ⓘ

There are no non-standard protein/DNA/RNA residues in this entry.

5.5 Carbohydrates [i](#)

There are no oligosaccharides in this entry.

5.6 Ligand geometry [i](#)

There are no ligands in this entry.

5.7 Other polymers [i](#)

There are no such residues in this entry.

5.8 Polymer linkage issues [i](#)

There are no chain breaks in this entry.

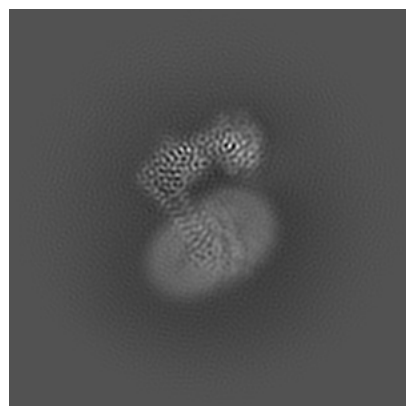
6 Map visualisation [i](#)

This section contains visualisations of the EMDB entry EMD-61049. These allow visual inspection of the internal detail of the map and identification of artifacts.

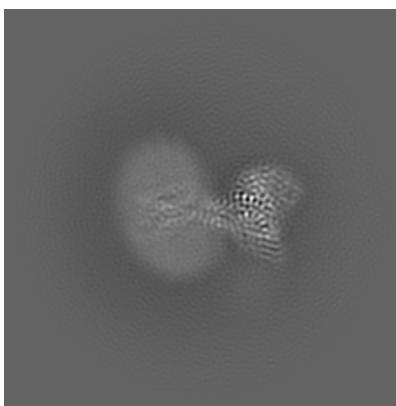
Images derived from a raw map, generated by summing the deposited half-maps, are presented below the corresponding image components of the primary map to allow further visual inspection and comparison with those of the primary map.

6.1 Orthogonal projections [i](#)

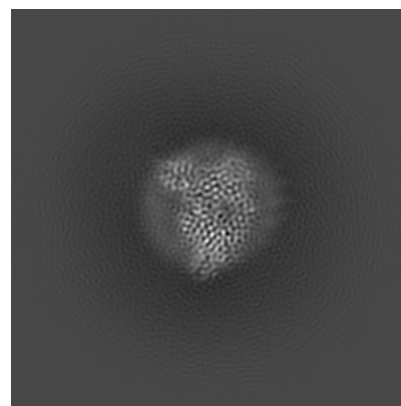
6.1.1 Primary map



X

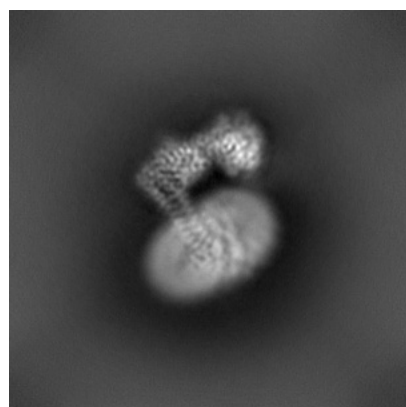


Y

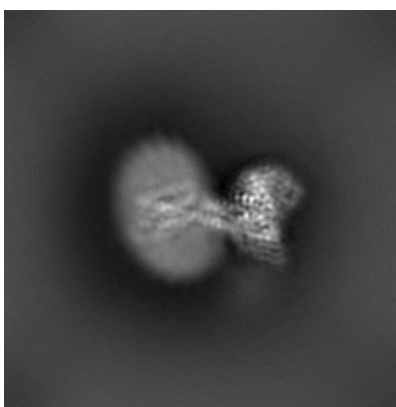


Z

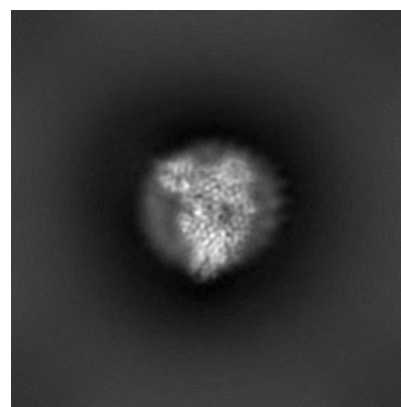
6.1.2 Raw map



X



Y

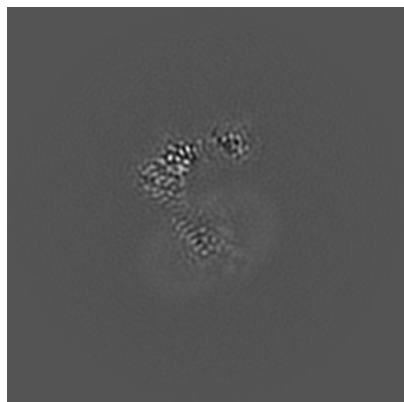


Z

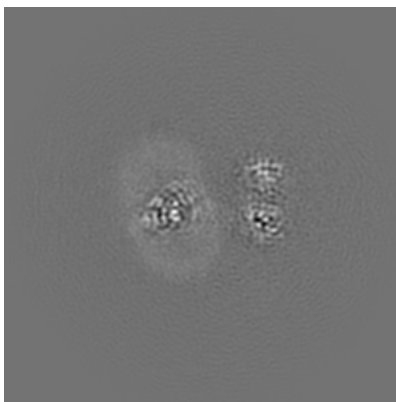
The images above show the map projected in three orthogonal directions.

6.2 Central slices [i](#)

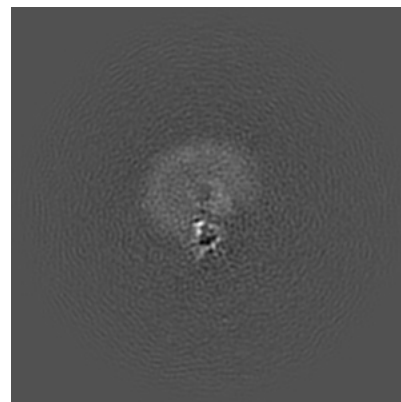
6.2.1 Primary map



X Index: 160

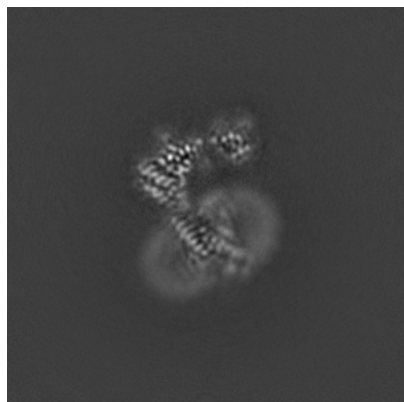


Y Index: 160

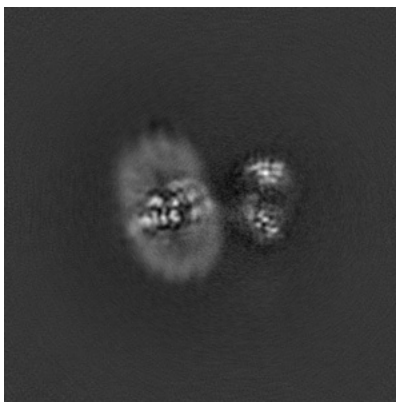


Z Index: 160

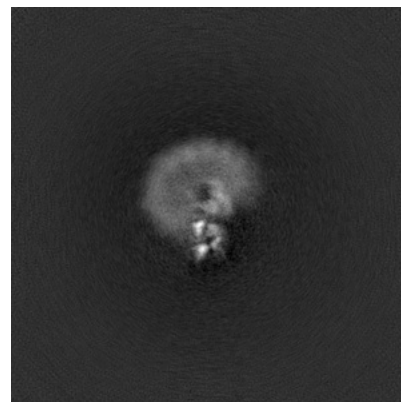
6.2.2 Raw map



X Index: 160



Y Index: 160

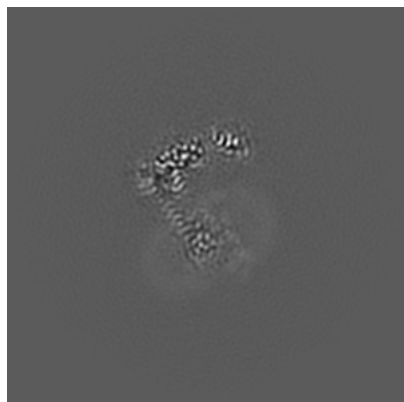


Z Index: 160

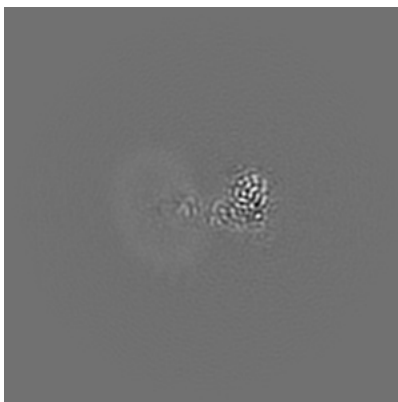
The images above show central slices of the map in three orthogonal directions.

6.3 Largest variance slices [i](#)

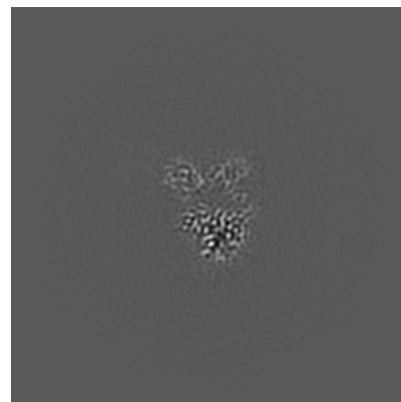
6.3.1 Primary map



X Index: 156

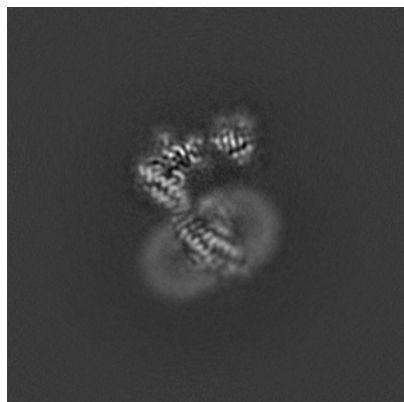


Y Index: 137

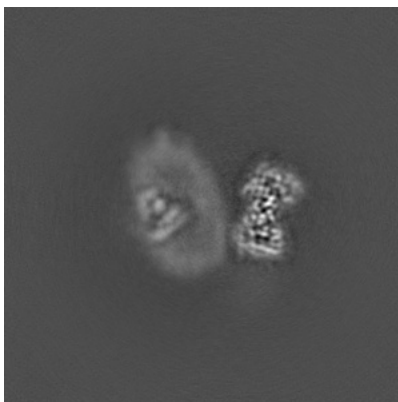


Z Index: 199

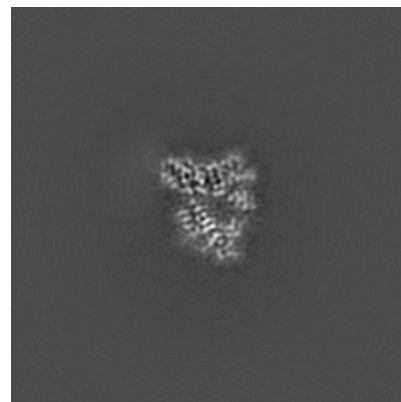
6.3.2 Raw map



X Index: 162



Y Index: 181

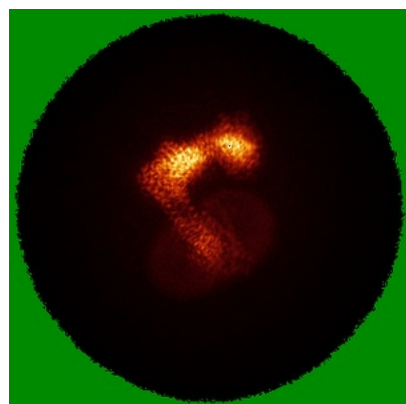


Z Index: 207

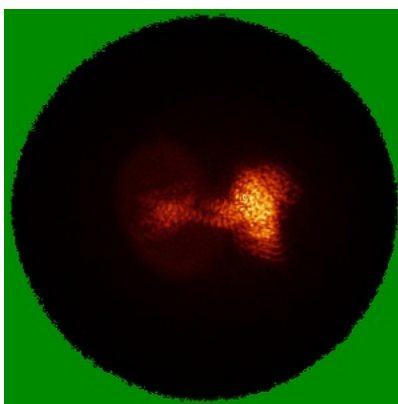
The images above show the largest variance slices of the map in three orthogonal directions.

6.4 Orthogonal standard-deviation projections (False-color) [i](#)

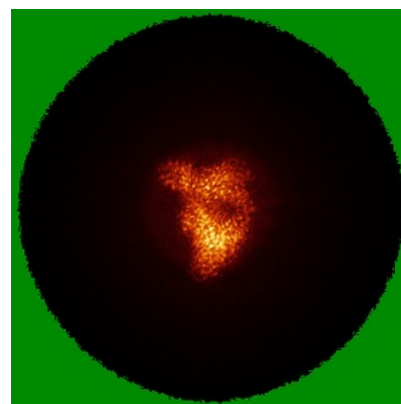
6.4.1 Primary map



X

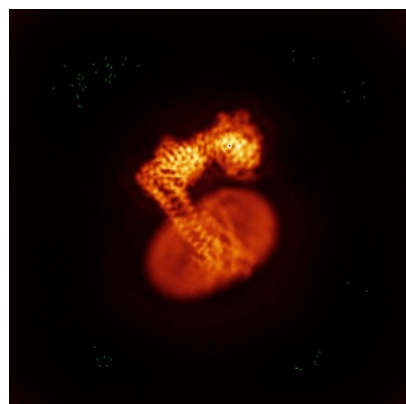


Y

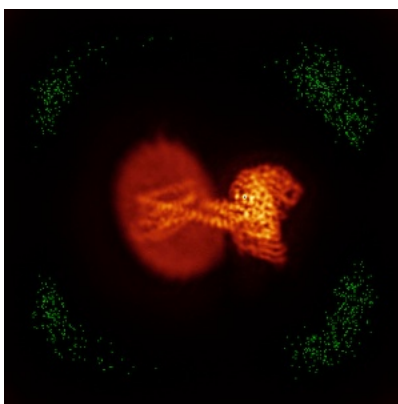


Z

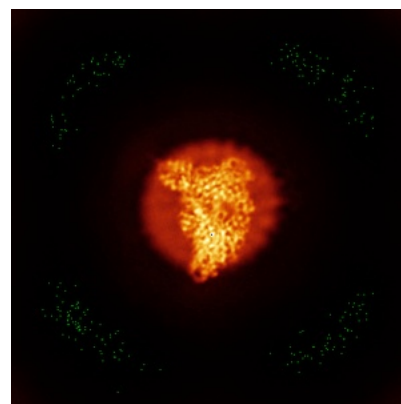
6.4.2 Raw map



X



Y

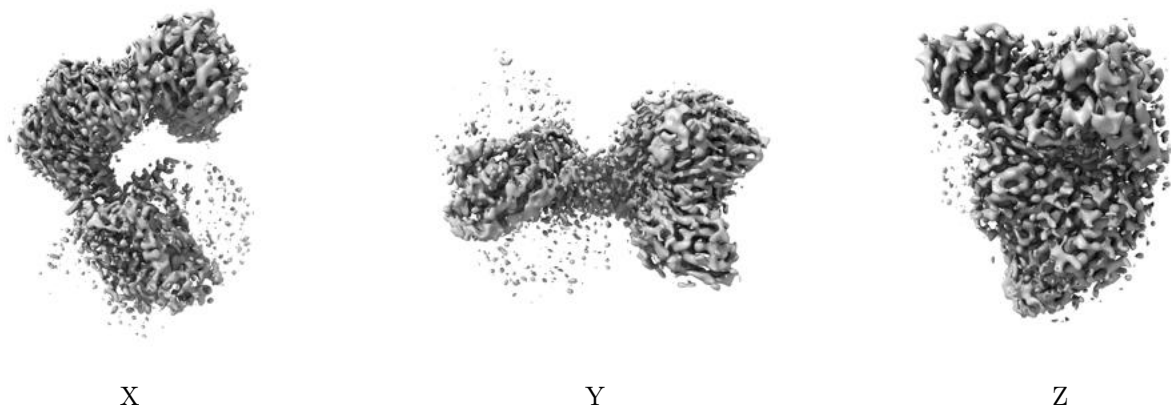


Z

The images above show the map standard deviation projections with false color in three orthogonal directions. Minimum values are shown in green, max in blue, and dark to light orange shades represent small to large values respectively.

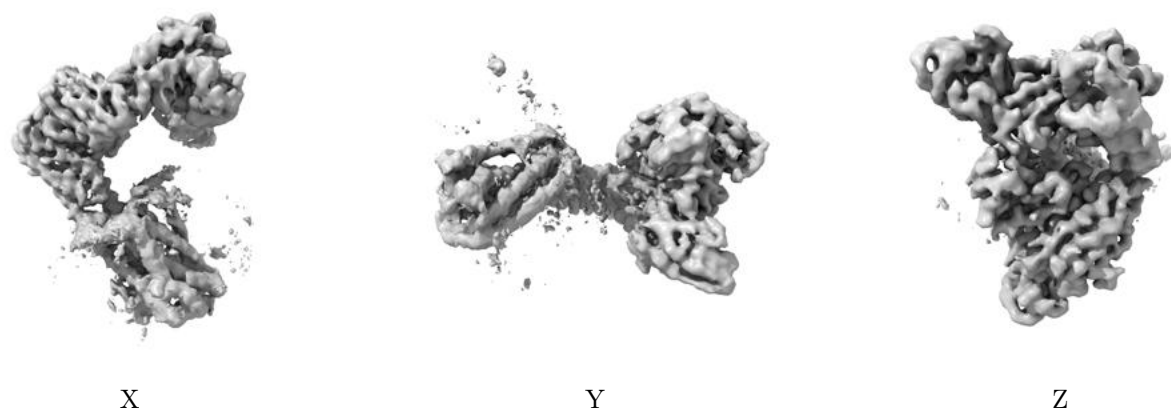
6.5 Orthogonal surface views [i](#)

6.5.1 Primary map



The images above show the 3D surface view of the map at the recommended contour level 0.32. These images, in conjunction with the slice images, may facilitate assessment of whether an appropriate contour level has been provided.

6.5.2 Raw map



These images show the 3D surface of the raw map. The raw map's contour level was selected so that its surface encloses the same volume as the primary map does at its recommended contour level.

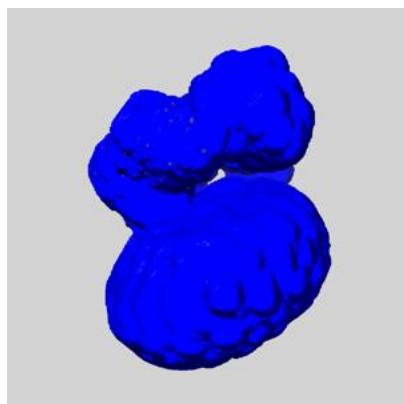
6.6 Mask visualisation [i](#)

This section shows the 3D surface view of the primary map at 50% transparency overlaid with the specified mask at 0% transparency

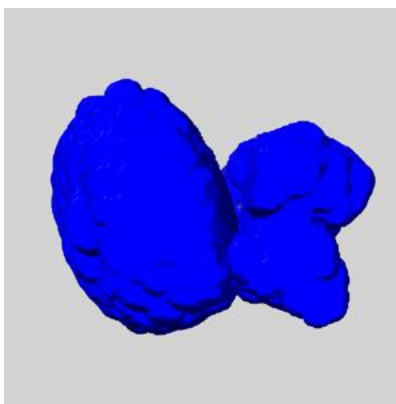
A mask typically either:

- Encompasses the whole structure
- Separates out a domain, a functional unit, a monomer or an area of interest from a larger structure

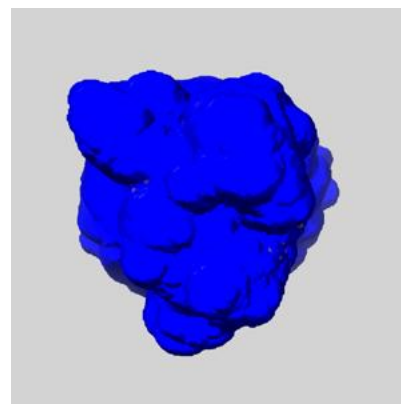
6.6.1 emd_61049_msk_1.map [i](#)



X



Y

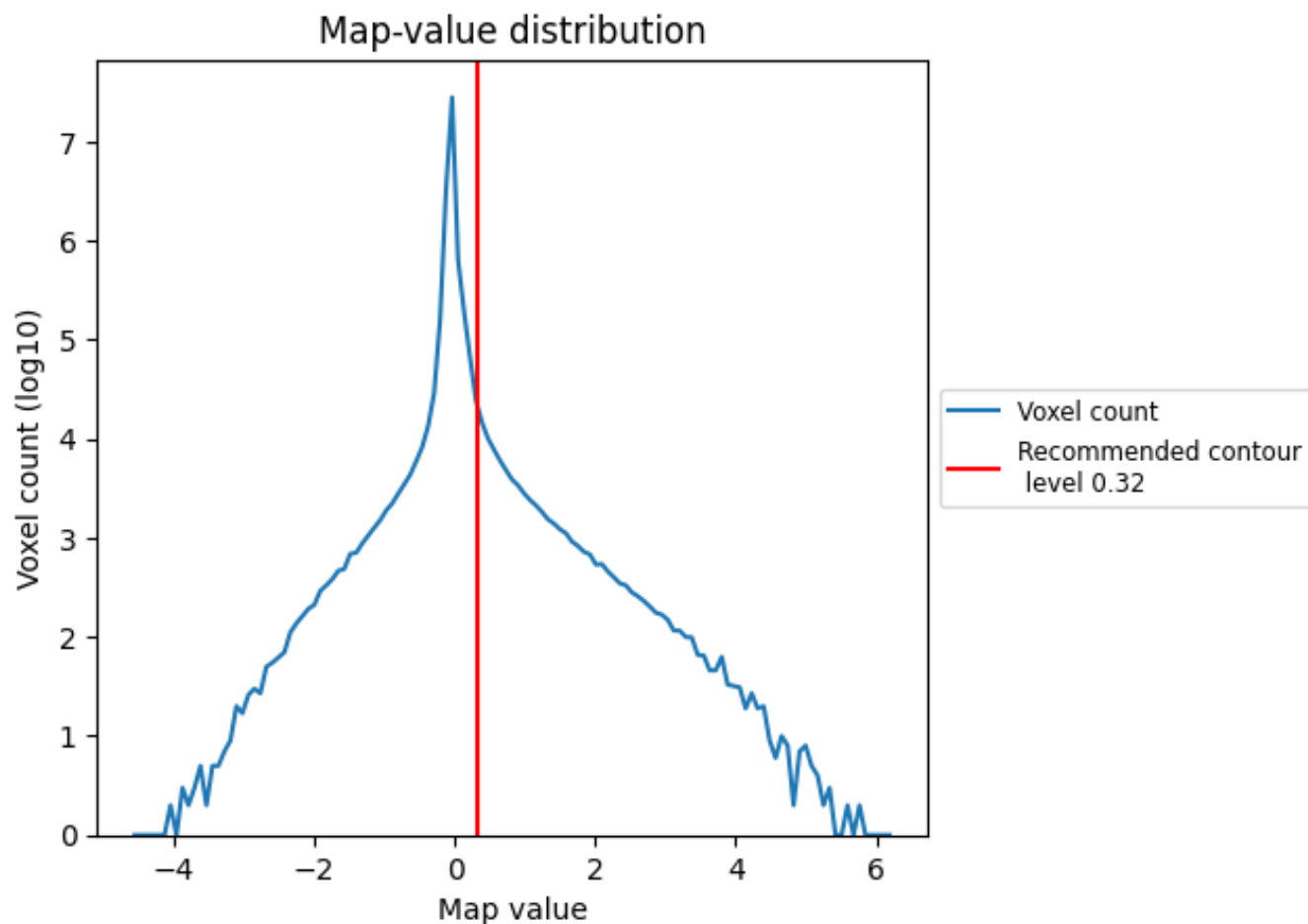


Z

7 Map analysis [i](#)

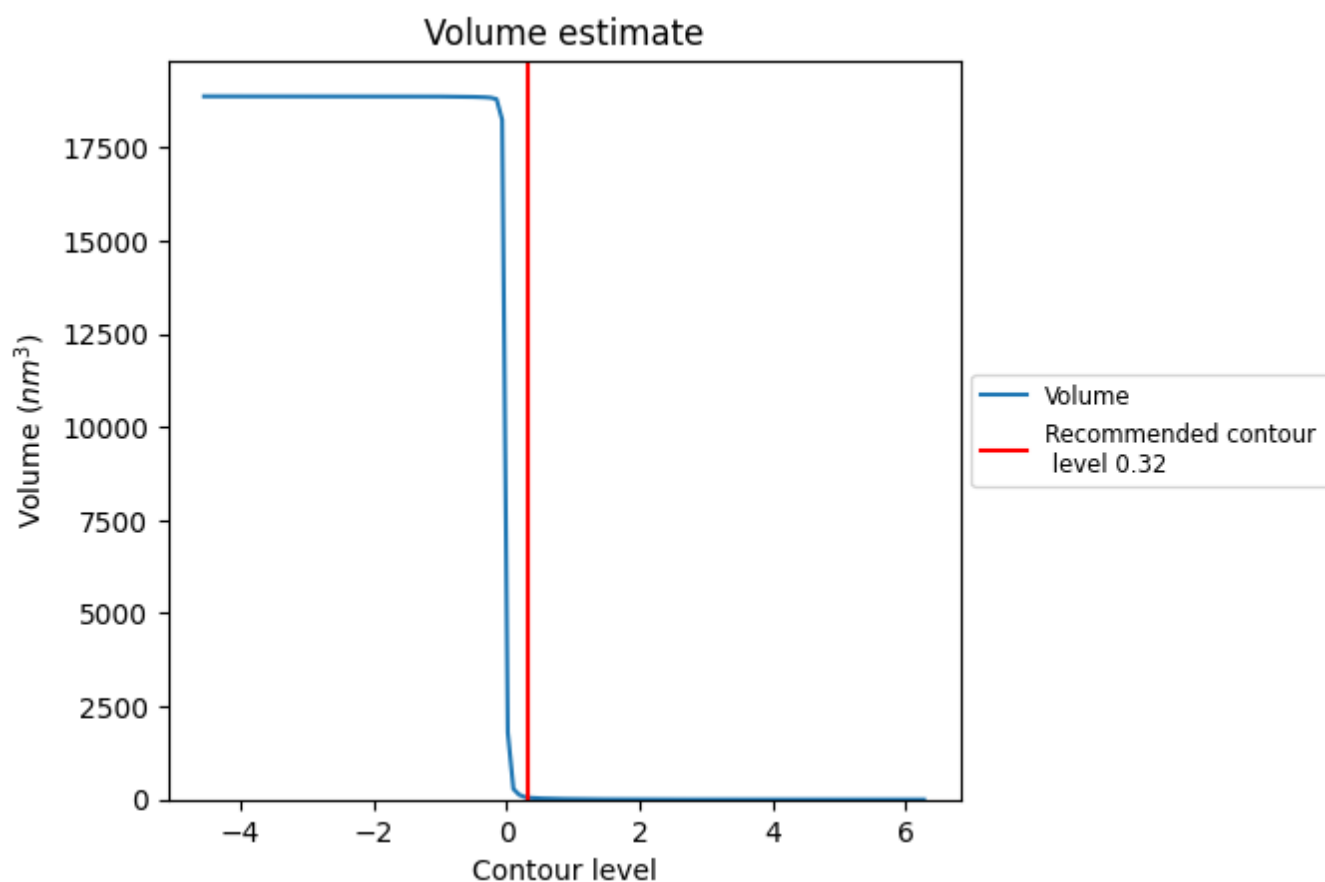
This section contains the results of statistical analysis of the map.

7.1 Map-value distribution [i](#)



The map-value distribution is plotted in 128 intervals along the x-axis. The y-axis is logarithmic. A spike in this graph at zero usually indicates that the volume has been masked.

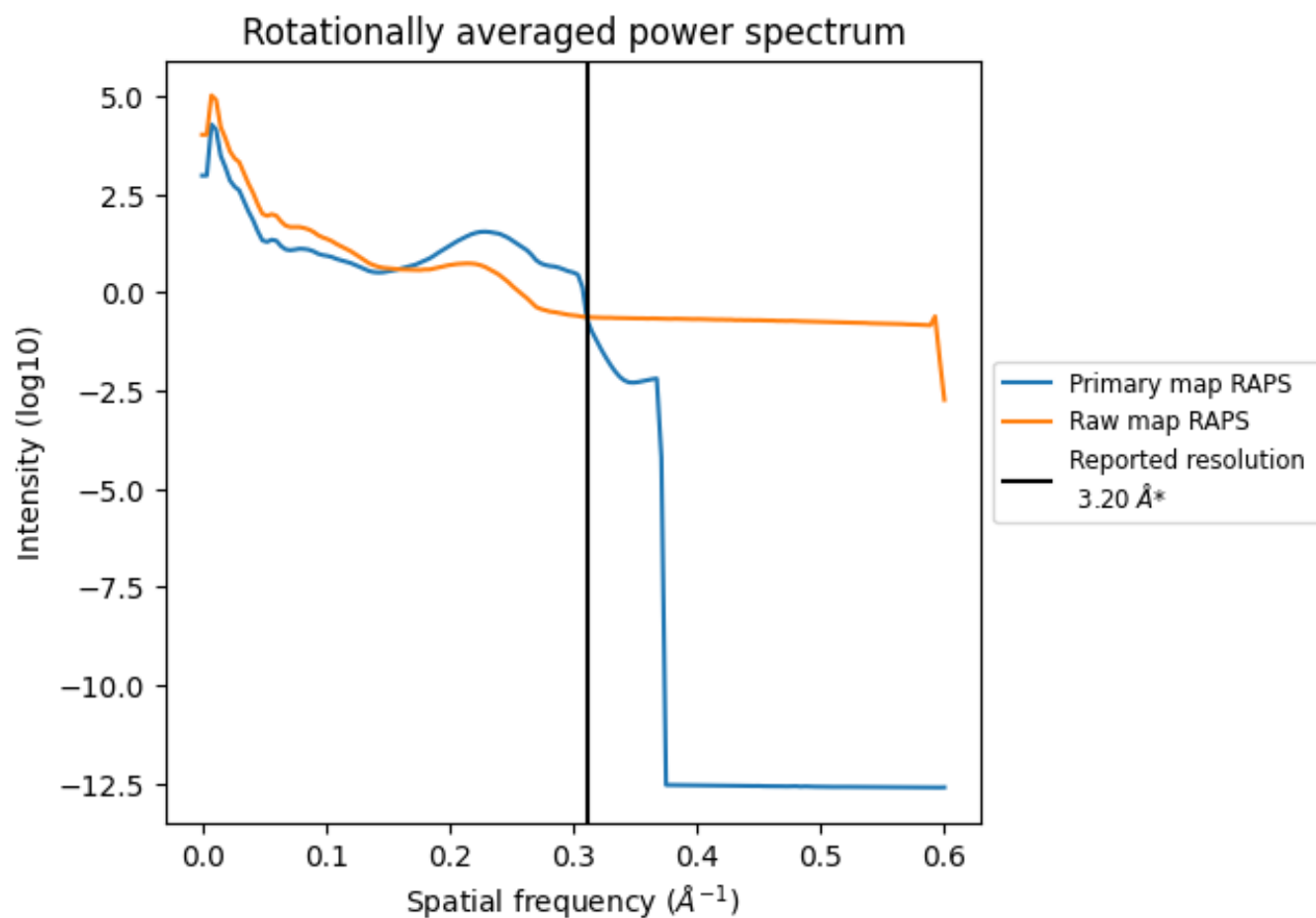
7.2 Volume estimate [i](#)



The volume at the recommended contour level is 56 nm^3 ; this corresponds to an approximate mass of 50 kDa.

The volume estimate graph shows how the enclosed volume varies with the contour level. The recommended contour level is shown as a vertical line and the intersection between the line and the curve gives the volume of the enclosed surface at the given level.

7.3 Rotationally averaged power spectrum ⓘ

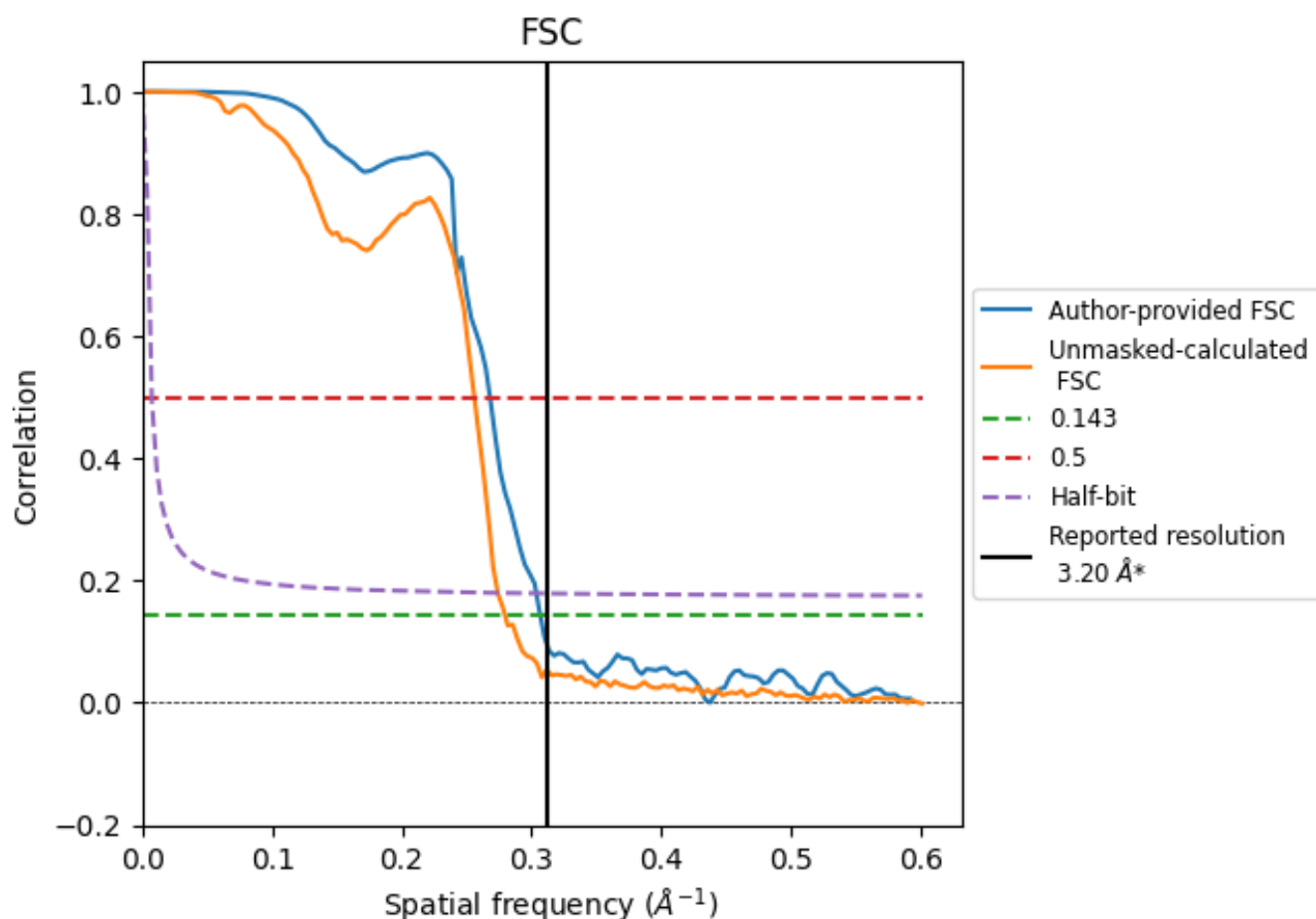


*Reported resolution corresponds to spatial frequency of 0.312 \AA^{-1}

8 Fourier-Shell correlation [i](#)

Fourier-Shell Correlation (FSC) is the most commonly used method to estimate the resolution of single-particle and subtomogram-averaged maps. The shape of the curve depends on the imposed symmetry, mask and whether or not the two 3D reconstructions used were processed from a common reference. The reported resolution is shown as a black line. A curve is displayed for the half-bit criterion in addition to lines showing the 0.143 gold standard cut-off and 0.5 cut-off.

8.1 FSC [i](#)



*Reported resolution corresponds to spatial frequency of 0.312 Å⁻¹

8.2 Resolution estimates [i](#)

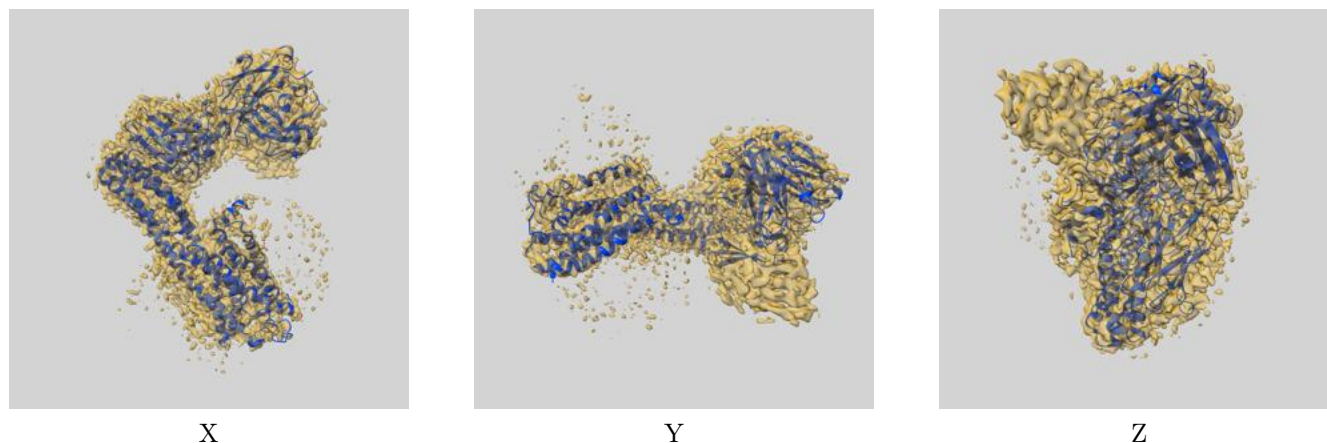
Resolution estimate (Å)	Estimation criterion (FSC cut-off)		
	0.143	0.5	Half-bit
Reported by author	3.20	-	-
Author-provided FSC curve	3.26	3.73	3.29
Unmasked-calculated*	3.58	3.91	3.65

*Resolution estimate based on FSC curve calculated by comparison of deposited half-maps. The value from deposited half-maps intersecting FSC 0.143 CUT-OFF 3.58 differs from the reported value 3.2 by more than 10 %

9 Map-model fit [i](#)

This section contains information regarding the fit between EMDB map EMD-61049 and PDB model 9J05. Per-residue inclusion information can be found in section [3](#) on page [7](#).

9.1 Map-model overlay [i](#)



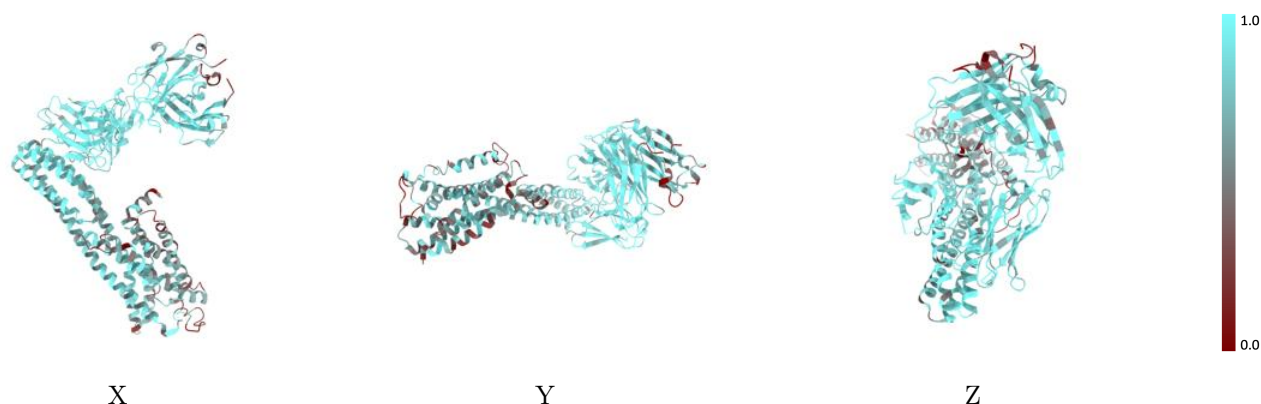
The images above show the 3D surface view of the map at the recommended contour level 0.32 at 50% transparency in yellow overlaid with a ribbon representation of the model coloured in blue. These images allow for the visual assessment of the quality of fit between the atomic model and the map.

9.2 Q-score mapped to coordinate model [i](#)



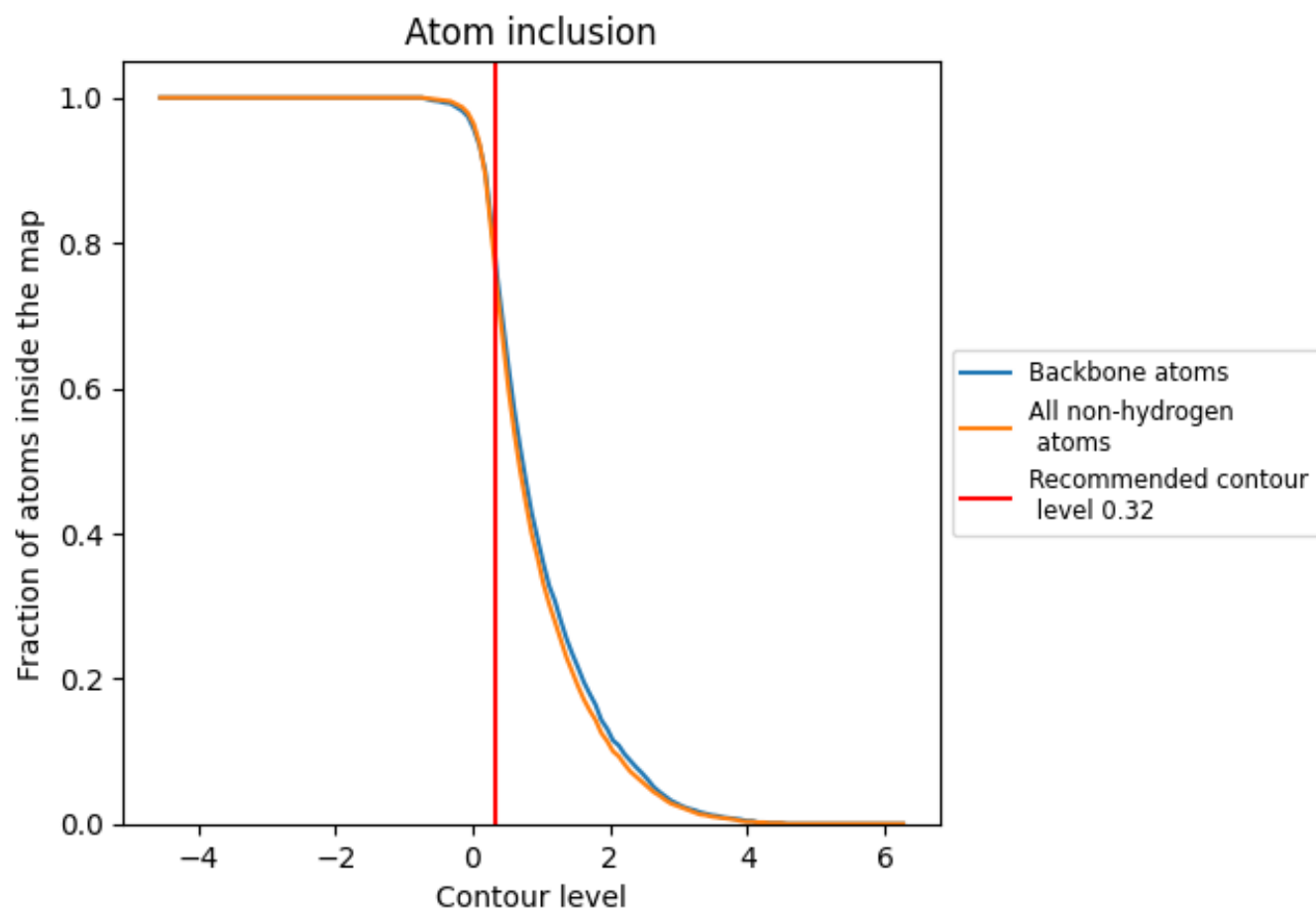
The images above show the model with each residue coloured according to its Q-score. This shows their resolvability in the map with higher Q-score values reflecting better resolvability. Please note: Q-score is calculating the resolvability of atoms, and thus high values are only expected at resolutions at which atoms can be resolved. Low Q-score values may therefore be expected for many entries.

9.3 Atom inclusion mapped to coordinate model [i](#)



The images above show the model with each residue coloured according to its atom inclusion. This shows to what extent they are inside the map at the recommended contour level (0.32).

9.4 Atom inclusion [i](#)



At the recommended contour level, 79% of all backbone atoms, 77% of all non-hydrogen atoms, are inside the map.

9.5 Map-model fit summary ⓘ

The table lists the average atom inclusion at the recommended contour level (0.32) and Q-score for the entire model and for each chain.

Chain	Atom inclusion	Q-score
All	<div></div> 0.7740	<div></div> 0.4470
A	<div></div> 0.6980	<div></div> 0.3940
B	<div></div> 0.8180	<div></div> 0.4870
C	<div></div> 0.8650	<div></div> 0.4980

