



Full wwPDB X-ray Structure Validation Report ⓘ

Jul 14, 2025 – 02:29 PM JST

PDB ID : 9IUI / pdb_00009iui
Title : Crystal structure of PSD-95 GK domain in complex with GK_FingR
Authors : Zhu, S.; Cai, Q.; Zhang, M.
Deposited on : 2024-07-21
Resolution : 1.93 Å(reported)

This is a Full wwPDB X-ray Structure Validation Report for a publicly released PDB entry.

We welcome your comments at validation@mail.wwpdb.org

A user guide is available at

<https://www.wwpdb.org/validation/2017/XrayValidationReportHelp>

with specific help available everywhere you see the ⓘ symbol.

The types of validation reports are described at

<http://www.wwpdb.org/validation/2017/FAQs#types>.

The following versions of software and data (see [references ⓘ](#)) were used in the production of this report:

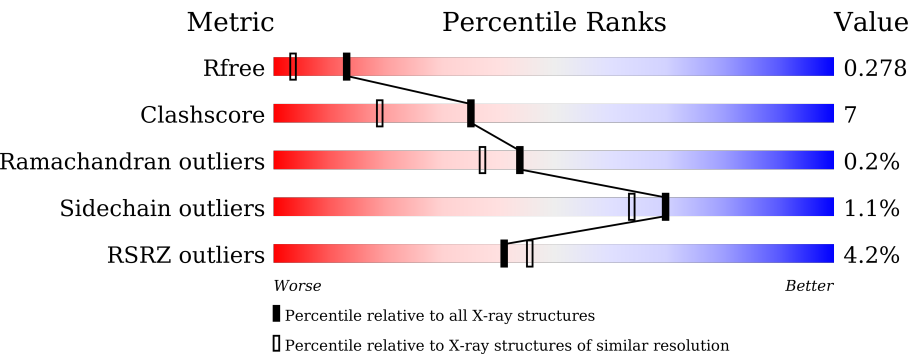
MolProbity : 4-5-2 with Phenix2.0rc1
Mogul : 1.8.5 (274361), CSD as541be (2020)
Xtriage (Phenix) : 2.0rc1
EDS : 3.0
Percentile statistics : 20231227.v01 (using entries in the PDB archive December 27th 2023)
CCP4 : 9.0.006 (Gargrove)
Density-Fitness : 1.0.12
Ideal geometry (proteins) : Engh & Huber (2001)
Ideal geometry (DNA, RNA) : Parkinson et al. (1996)
Validation Pipeline (wwPDB-VP) : 2.44

1 Overall quality at a glance i

The following experimental techniques were used to determine the structure:
X-RAY DIFFRACTION

The reported resolution of this entry is 1.93 Å.

Percentile scores (ranging between 0-100) for global validation metrics of the entry are shown in the following graphic. The table shows the number of entries on which the scores are based.



Metric	Whole archive (#Entries)	Similar resolution (#Entries, resolution range(Å))
R_{free}	164625	1306 (1.94-1.94)
Clashscore	180529	1400 (1.94-1.94)
Ramachandran outliers	177936	1387 (1.94-1.94)
Sidechain outliers	177891	1387 (1.94-1.94)
RSRZ outliers	164620	1306 (1.94-1.94)

The table below summarises the geometric issues observed across the polymeric chains and their fit to the electron density. The red, orange, yellow and green segments of the lower bar indicate the fraction of residues that contain outliers for ≥ 3 , 2, 1 and 0 types of geometric quality criteria respectively. A grey segment represents the fraction of residues that are not modelled. The numeric value for each fraction is indicated below the corresponding segment, with a dot representing fractions $\leq 5\%$. The upper red bar (where present) indicates the fraction of residues that have poor fit to the electron density. The numeric value is given above the bar.

Mol	Chain	Length	Quality of chain
1	A	189	<div><div>2%</div><div>84%</div><div>12%</div><div>••</div></div>
1	C	189	<div><div>2%</div><div>79%</div><div>17%</div><div>•</div></div>
2	B	96	<div><div>10%</div><div>73%</div><div>22%</div><div>5%</div></div>
2	D	96	<div><div>6%</div><div>78%</div><div>17%</div><div>5%</div></div>

2 Entry composition

There are 6 unique types of molecules in this entry. The entry contains 4667 atoms, of which 0 are hydrogens and 0 are deuteriums.

In the tables below, the ZeroOcc column contains the number of atoms modelled with zero occupancy, the AltConf column contains the number of residues with at least one atom in alternate conformation and the Trace column contains the number of residues modelled with at most 2 atoms.

- Molecule 1 is a protein called Disks large homolog 4.

Mol	Chain	Residues	Atoms					ZeroOcc	AltConf	Trace
1	A	181	Total	C	N	O	S	0	1	0
			1472	923	266	278	5			
1	C	181	Total	C	N	O	S	0	3	0
			1486	931	268	282	5			

There are 12 discrepancies between the modelled and reference sequences:

Chain	Residue	Modelled	Actual	Comment	Reference
A	525	GLY	-	expression tag	UNP P31016
A	526	PRO	-	expression tag	UNP P31016
A	527	GLY	-	expression tag	UNP P31016
A	528	SER	-	expression tag	UNP P31016
A	529	GLU	-	expression tag	UNP P31016
A	530	PHE	-	expression tag	UNP P31016
C	525	GLY	-	expression tag	UNP P31016
C	526	PRO	-	expression tag	UNP P31016
C	527	GLY	-	expression tag	UNP P31016
C	528	SER	-	expression tag	UNP P31016
C	529	GLU	-	expression tag	UNP P31016
C	530	PHE	-	expression tag	UNP P31016

- Molecule 2 is a protein called FingR targeting PSD-95.

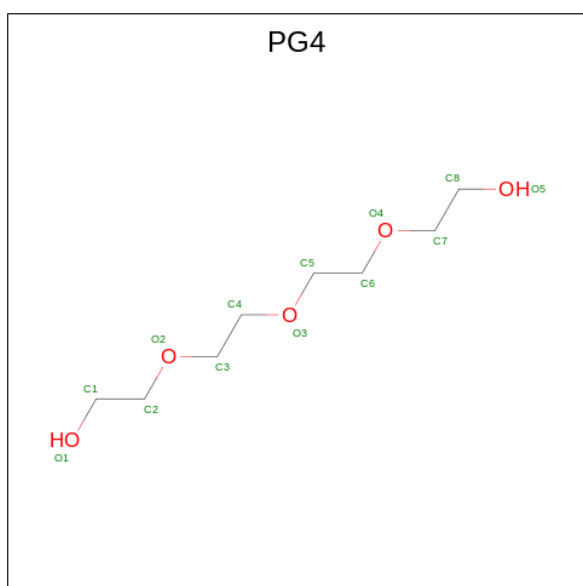
Mol	Chain	Residues	Atoms					ZeroOcc	AltConf	Trace
2	B	91	Total	C	N	O	S	0	0	0
			716	463	119	133	1			
2	D	91	Total	C	N	O	S	0	1	0
			722	466	120	135	1			

- Molecule 3 is GLYCEROL (CCD ID: GOL) (formula: C₃H₈O₃).



Mol	Chain	Residues	Atoms			ZeroOcc	AltConf
3	C	1	Total	C	O	0	0
			6	3	3		
3	D	1	Total	C	O	0	0
			6	3	3		

- Molecule 4 is TETRAETHYLENE GLYCOL (CCD ID: PG4) (formula: $C_8H_{18}O_5$).



Mol	Chain	Residues	Atoms			ZeroOcc	AltConf
4	D	1	Total	C	O	0	0
			13	8	5		

- Molecule 5 is DI(HYDROXYETHYL)ETHER (CCD ID: PEG) (formula: $C_4H_{10}O_3$).



Mol	Chain	Residues	Atoms			ZeroOcc	AltConf
5	D	1	Total	C	O	0	0
			7	4	3		

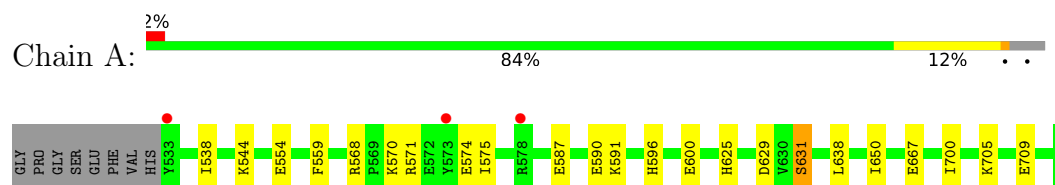
- Molecule 6 is water.

Mol	Chain	Residues	Atoms		ZeroOcc	AltConf
6	A	93	Total	O	0	0
			93	93		
6	B	27	Total	O	0	0
			27	27		
6	C	84	Total	O	0	0
			84	84		
6	D	35	Total	O	0	0
			35	35		

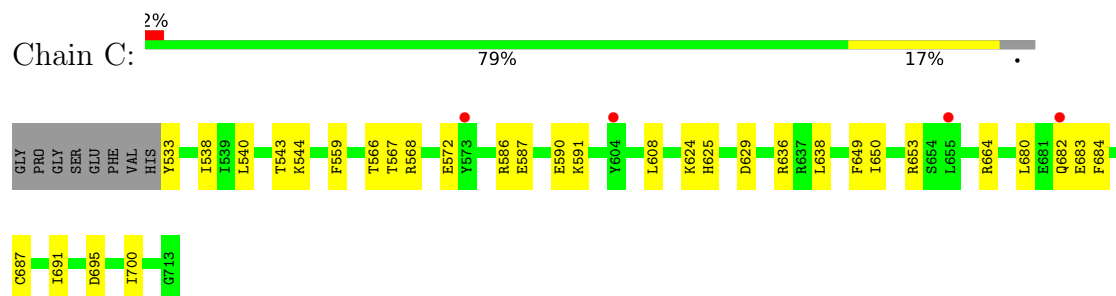
3 Residue-property plots [i](#)

These plots are drawn for all protein, RNA, DNA and oligosaccharide chains in the entry. The first graphic for a chain summarises the proportions of the various outlier classes displayed in the second graphic. The second graphic shows the sequence view annotated by issues in geometry and electron density. Residues are color-coded according to the number of geometric quality criteria for which they contain at least one outlier: green = 0, yellow = 1, orange = 2 and red = 3 or more. A red dot above a residue indicates a poor fit to the electron density ($RSRZ > 2$). Stretches of 2 or more consecutive residues without any outlier are shown as a green connector. Residues present in the sample, but not in the model, are shown in grey.

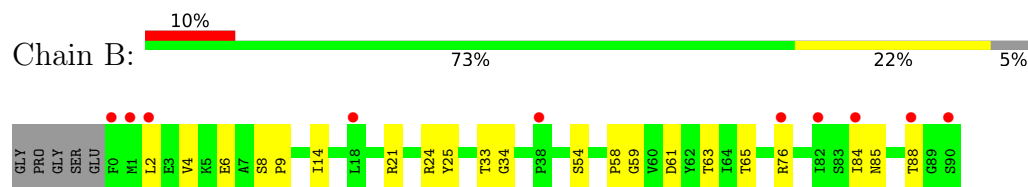
- Molecule 1: Disks large homolog 4



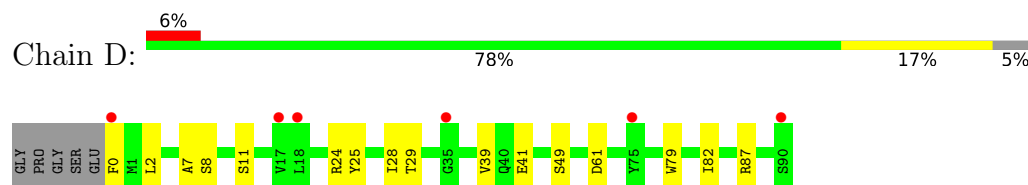
- Molecule 1: Disks large homolog 4



- Molecule 2: FingR targeting PSD-95



- Molecule 2: FingR targeting PSD-95



4 Data and refinement statistics

Property	Value	Source
Space group	P 21 21 21	Depositor
Cell constants a, b, c, α , β , γ	66.43Å 74.99Å 136.57Å 90.00° 90.00° 90.00°	Depositor
Resolution (Å)	49.72 – 1.93 49.72 – 1.93	Depositor EDS
% Data completeness (in resolution range)	98.3 (49.72-1.93) 98.9 (49.72-1.93)	Depositor EDS
R_{merge}	0.14	Depositor
R_{sym}	(Not available)	Depositor
$\langle I/\sigma(I) \rangle$ ¹	1.27 (at 1.92Å)	Xtriage
Refinement program	PHENIX (1.20.1_4487: ???)	Depositor
R, R_{free}	0.239 , 0.278 0.239 , 0.278	Depositor DCC
R_{free} test set	2575 reflections (5.00%)	wwPDB-VP
Wilson B-factor (Å ²)	34.6	Xtriage
Anisotropy	0.663	Xtriage
Bulk solvent k_{sol} (e/Å ³), B_{sol} (Å ²)	0.34 , 44.3	EDS
L-test for twinning ²	$\langle L \rangle = 0.57$, $\langle L^2 \rangle = 0.42$	Xtriage
Estimated twinning fraction	No twinning to report.	Xtriage
F_o, F_c correlation	0.96	EDS
Total number of atoms	4667	wwPDB-VP
Average B, all atoms (Å ²)	53.0	wwPDB-VP

Xtriage's analysis on translational NCS is as follows: *The analyses of the Patterson function reveals a significant off-origin peak that is 46.98 % of the origin peak, indicating pseudo-translational symmetry. The chance of finding a peak of this or larger height randomly in a structure without pseudo-translational symmetry is equal to 1.0595e-04. The detected translational NCS is most likely also responsible for the elevated intensity ratio.*

¹Intensities estimated from amplitudes.

²Theoretical values of $\langle |L| \rangle$, $\langle L^2 \rangle$ for acentric reflections are 0.5, 0.333 respectively for untwinned datasets, and 0.375, 0.2 for perfectly twinned datasets.

5 Model quality [i](#)

5.1 Standard geometry [i](#)

Bond lengths and bond angles in the following residue types are not validated in this section: PG4, GOL, PEG

The Z score for a bond length (or angle) is the number of standard deviations the observed value is removed from the expected value. A bond length (or angle) with $|Z| > 5$ is considered an outlier worth inspection. RMSZ is the root-mean-square of all Z scores of the bond lengths (or angles).

Mol	Chain	Bond lengths		Bond angles	
		RMSZ	# Z >5	RMSZ	# Z >5
1	A	0.22	0/1504	0.41	0/2025
1	C	0.23	0/1521	0.43	0/2048
2	B	0.21	0/737	0.43	0/1007
2	D	0.25	0/743	0.52	0/1015
All	All	0.23	0/4505	0.44	0/6095

There are no bond length outliers.

There are no bond angle outliers.

There are no chirality outliers.

There are no planarity outliers.

5.2 Too-close contacts [i](#)

In the following table, the Non-H and H(model) columns list the number of non-hydrogen atoms and hydrogen atoms in the chain respectively. The H(added) column lists the number of hydrogen atoms added and optimized by MolProbity. The Clashes column lists the number of clashes within the asymmetric unit, whereas Symm-Clashes lists symmetry-related clashes.

Mol	Chain	Non-H	H(model)	H(added)	Clashes	Symm-Clashes
1	A	1472	0	1451	14	0
1	C	1486	0	1462	23	0
2	B	716	0	712	14	0
2	D	722	0	716	12	0
3	C	6	0	8	3	0
3	D	6	0	8	0	0
4	D	13	0	18	2	0
5	D	7	0	10	1	0
6	A	93	0	0	5	0

Continued on next page...

Continued from previous page...

Mol	Chain	Non-H	H(model)	H(added)	Clashes	Symm-Clashes
6	B	27	0	0	2	0
6	C	84	0	0	6	0
6	D	35	0	0	1	0
All	All	4667	0	4385	64	0

The all-atom clashscore is defined as the number of clashes found per 1000 atoms (including hydrogen atoms). The all-atom clashscore for this structure is 7.

All (64) close contacts within the same asymmetric unit are listed below, sorted by their clash magnitude.

Atom-1	Atom-2	Interatomic distance (Å)	Clash overlap (Å)
1:C:543:THR:H	3:C:801:GOL:H2	1.33	0.93
2:D:7:ALA:O	2:D:11:SER:OG	2.05	0.73
1:A:590:GLU:OE1	6:A:801:HOH:O	2.08	0.71
1:A:667:GLU:OE2	6:A:802:HOH:O	2.09	0.70
6:A:801:HOH:O	2:D:49:SER:OG	2.09	0.70
2:B:6:GLU:OE1	2:B:88:THR:OG1	2.10	0.69
1:C:636:ARG:NH2	6:C:901:HOH:O	2.04	0.69
1:C:544:LYS:NZ	1:C:629:ASP:OD1	2.26	0.68
1:C:572:GLU:OE2	6:C:902:HOH:O	2.13	0.66
2:D:61:ASP:OD2	2:D:87:ARG:NH2	2.29	0.65
3:C:801:GOL:H12	2:D:79:TRP:CZ3	2.32	0.64
1:C:587:GLU:OE1	1:C:587:GLU:N	2.31	0.64
2:B:65:THR:HG23	6:B:105:HOH:O	2.00	0.61
1:C:624:LYS:NZ	6:C:905:HOH:O	2.33	0.60
2:B:54:SER:O	6:B:101:HOH:O	2.17	0.60
2:B:4:VAL:HG22	2:B:14:ILE:HG22	1.84	0.59
1:A:705:LYS:O	1:A:709:GLU:HG3	2.04	0.58
1:A:544:LYS:NZ	1:A:629:ASP:OD1	2.35	0.58
2:D:29:THR:HG23	2:D:39:VAL:HG21	1.85	0.58
2:D:29:THR:HG22	6:D:911:HOH:O	2.04	0.57
1:C:587:GLU:O	1:C:591:LYS:HG2	2.05	0.56
2:B:9:PRO:O	2:B:88:THR:HG21	2.04	0.56
2:B:2:LEU:HD23	2:B:84:ILE:HG13	1.88	0.55
1:C:567:THR:HG21	1:C:586:ARG:HA	1.88	0.55
1:A:554:GLU:HG2	6:A:803:HOH:O	2.08	0.54
2:B:76:ARG:HH11	2:B:76:ARG:HG2	1.73	0.53
1:C:680:LEU:HD12	1:C:684:PHE:HD2	1.74	0.52
1:A:600:GLU:OE1	1:A:631:SER:HB3	2.10	0.51
1:A:596:HIS:CE1	5:D:802:PEG:H32	2.46	0.51
2:B:33:THR:HB	2:B:61:ASP:HB3	1.93	0.50

Continued on next page...

Continued from previous page...

Atom-1	Atom-2	Interatomic distance (Å)	Clash overlap (Å)
1:C:650:ILE:HG23	1:C:700:ILE:HD12	1.94	0.49
1:A:650:ILE:HG23	1:A:700:ILE:HD12	1.93	0.49
2:D:24:ARG:HD2	2:D:25:TYR:CE1	2.48	0.49
1:C:653:ARG:HH12	1:C:695[A]:ASP:CG	2.20	0.49
1:C:683:GLU:HG2	1:C:684:PHE:CE2	2.46	0.49
6:A:807:HOH:O	4:D:801:PG4:H71	2.13	0.48
2:B:63:THR:OG1	2:B:85:ASN:ND2	2.46	0.48
1:C:533:TYR:N	6:C:910:HOH:O	2.47	0.48
2:B:58:PRO:HA	2:B:88:THR:CG2	2.46	0.46
1:A:559:PHE:CD2	1:A:625:HIS:HB2	2.51	0.46
1:C:590:GLU:HB3	1:C:591:LYS:HE2	1.98	0.46
2:B:59:GLY:H	2:B:88:THR:HG23	1.80	0.46
1:C:636:ARG:NE	1:C:687[B]:CYS:SG	2.71	0.46
1:C:682[A]:GLN:HA	6:C:903:HOH:O	2.16	0.45
1:C:682[B]:GLN:HA	6:C:903:HOH:O	2.16	0.45
2:D:2:LEU:HB2	2:D:82:ILE:HG12	1.99	0.44
4:D:801:PG4:H71	4:D:801:PG4:H52	1.68	0.44
1:A:587:GLU:O	1:A:591:LYS:HD3	2.18	0.44
1:C:538:ILE:HD11	1:C:638:LEU:CD1	2.47	0.44
2:B:21:ARG:HE	2:B:21:ARG:HB3	1.53	0.43
2:B:84:ILE:HD12	2:B:84:ILE:C	2.44	0.42
1:C:649:PHE:HB3	1:C:691:ILE:HD13	2.01	0.42
1:C:566:THR:HA	1:C:608:LEU:O	2.19	0.42
1:A:574:GLU:O	1:A:575:ILE:HD13	2.19	0.42
1:A:538:ILE:HD11	1:A:638:LEU:CD1	2.49	0.42
2:B:24:ARG:HD2	2:B:25:TYR:CE1	2.54	0.42
1:C:540:LEU:HB3	1:C:680:LEU:HD21	2.02	0.41
2:D:28:ILE:O	2:D:41:GLU:HA	2.20	0.41
1:A:570:LYS:HG2	1:A:571:ARG:O	2.20	0.41
1:C:664:ARG:HB3	2:D:0:PHE:HD2	1.85	0.41
1:A:538:ILE:HD11	1:A:638:LEU:HD12	2.03	0.41
2:D:24:ARG:HG2	2:D:25:TYR:HD1	1.86	0.40
1:C:559:PHE:CD2	1:C:625:HIS:HB2	2.56	0.40
3:C:801:GOL:H12	2:D:79:TRP:CE3	2.55	0.40

There are no symmetry-related clashes.

5.3 Torsion angles

5.3.1 Protein backbone

In the following table, the Percentiles column shows the percent Ramachandran outliers of the chain as a percentile score with respect to all X-ray entries followed by that with respect to entries of similar resolution.

The Analysed column shows the number of residues for which the backbone conformation was analysed, and the total number of residues.

Mol	Chain	Analysed	Favoured	Allowed	Outliers	Percentiles	
1	A	180/189 (95%)	179 (99%)	1 (1%)	0	100	100
1	C	182/189 (96%)	180 (99%)	2 (1%)	0	100	100
2	B	89/96 (93%)	83 (93%)	5 (6%)	1 (1%)	12	4
2	D	90/96 (94%)	87 (97%)	3 (3%)	0	100	100
All	All	541/570 (95%)	529 (98%)	11 (2%)	1 (0%)	44	37

All (1) Ramachandran outliers are listed below:

Mol	Chain	Res	Type
2	B	34	GLY

5.3.2 Protein sidechains

In the following table, the Percentiles column shows the percent sidechain outliers of the chain as a percentile score with respect to all X-ray entries followed by that with respect to entries of similar resolution.

The Analysed column shows the number of residues for which the sidechain conformation was analysed, and the total number of residues.

Mol	Chain	Analysed	Rotameric	Outliers	Percentiles	
1	A	160/165 (97%)	158 (99%)	2 (1%)	65	58
1	C	162/165 (98%)	161 (99%)	1 (1%)	84	83
2	B	79/82 (96%)	78 (99%)	1 (1%)	65	58
2	D	80/82 (98%)	79 (99%)	1 (1%)	65	58
All	All	481/494 (97%)	476 (99%)	5 (1%)	70	68

All (5) residues with a non-rotameric sidechain are listed below:

Mol	Chain	Res	Type
1	A	568	ARG
1	A	631	SER
2	B	8	SER
1	C	568	ARG
2	D	8	SER

Sometimes sidechains can be flipped to improve hydrogen bonding and reduce clashes. All (8) such sidechains are listed below:

Mol	Chain	Res	Type
1	A	581	HIS
1	A	596	HIS
1	A	605	ASN
1	A	644	HIS
2	B	85	ASN
1	C	596	HIS
1	C	607	HIS
2	D	13	GLN

5.3.3 RNA [i](#)

There are no RNA molecules in this entry.

5.4 Non-standard residues in protein, DNA, RNA chains [i](#)

There are no non-standard protein/DNA/RNA residues in this entry.

5.5 Carbohydrates [i](#)

There are no oligosaccharides in this entry.

5.6 Ligand geometry [i](#)

4 ligands are modelled in this entry.

In the following table, the Counts columns list the number of bonds (or angles) for which Mogul statistics could be retrieved, the number of bonds (or angles) that are observed in the model and the number of bonds (or angles) that are defined in the Chemical Component Dictionary. The Link column lists molecule types, if any, to which the group is linked. The Z score for a bond length (or angle) is the number of standard deviations the observed value is removed from the

expected value. A bond length (or angle) with $|Z| > 2$ is considered an outlier worth inspection. RMSZ is the root-mean-square of all Z scores of the bond lengths (or angles).

Mol	Type	Chain	Res	Link	Bond lengths			Bond angles		
					Counts	RMSZ	# Z > 2	Counts	RMSZ	# Z > 2
5	PEG	D	802	-	6,6,6	0.13	0	5,5,5	0.11	0
3	GOL	D	803	-	5,5,5	0.96	0	5,5,5	0.97	0
4	PG4	D	801	-	12,12,12	0.17	0	11,11,11	0.56	0
3	GOL	C	801	-	5,5,5	1.15	0	5,5,5	0.67	0

In the following table, the Chirals column lists the number of chiral outliers, the number of chiral centers analysed, the number of these observed in the model and the number defined in the Chemical Component Dictionary. Similar counts are reported in the Torsion and Rings columns. '-' means no outliers of that kind were identified.

Mol	Type	Chain	Res	Link	Chirals	Torsions	Rings
5	PEG	D	802	-	-	2/4/4/4	-
3	GOL	D	803	-	-	1/4/4/4	-
4	PG4	D	801	-	-	5/10/10/10	-
3	GOL	C	801	-	-	2/4/4/4	-

There are no bond length outliers.

There are no bond angle outliers.

There are no chirality outliers.

All (10) torsion outliers are listed below:

Mol	Chain	Res	Type	Atoms
4	D	801	PG4	O2-C3-C4-O3
4	D	801	PG4	O3-C5-C6-O4
3	C	801	GOL	O1-C1-C2-C3
4	D	801	PG4	C5-C6-O4-C7
4	D	801	PG4	C4-C3-O2-C2
3	C	801	GOL	O1-C1-C2-O2
3	D	803	GOL	O1-C1-C2-O2
5	D	802	PEG	O1-C1-C2-O2
4	D	801	PG4	C1-C2-O2-C3
5	D	802	PEG	C1-C2-O2-C3

There are no ring outliers.

3 monomers are involved in 6 short contacts:

Mol	Chain	Res	Type	Clashes	Symm-Clashes
5	D	802	PEG	1	0
4	D	801	PG4	2	0
3	C	801	GOL	3	0

5.7 Other polymers [i](#)

There are no such residues in this entry.

5.8 Polymer linkage issues [i](#)

There are no chain breaks in this entry.

6 Fit of model and data

6.1 Protein, DNA and RNA chains

In the following table, the column labelled ‘#RSRZ> 2’ contains the number (and percentage) of RSRZ outliers, followed by percent RSRZ outliers for the chain as percentile scores relative to all X-ray entries and entries of similar resolution. The OWAB column contains the minimum, median, 95th percentile and maximum values of the occupancy-weighted average B-factor per residue. The column labelled ‘Q< 0.9’ lists the number of (and percentage) of residues with an average occupancy less than 0.9.

Mol	Chain	Analysed	<RSRZ>	#RSRZ>2	OWAB(Å ²)	Q<0.9
1	A	181/189 (95%)	0.34	3 (1%) 69 74	30, 47, 64, 69	1 (0%)
1	C	181/189 (95%)	0.52	4 (2%) 62 68	26, 49, 74, 84	3 (1%)
2	B	91/96 (94%)	0.89	10 (10%) 12 14	38, 61, 97, 115	0
2	D	91/96 (94%)	0.69	6 (6%) 26 28	24, 51, 88, 102	1 (1%)
All	All	544/570 (95%)	0.55	23 (4%) 41 46	24, 50, 79, 115	5 (0%)

All (23) RSRZ outliers are listed below:

Mol	Chain	Res	Type	RSRZ
2	D	0	PHE	5.3
2	B	0	PHE	4.3
1	C	573	TYR	4.0
2	B	84	ILE	2.9
2	B	90	SER	2.9
2	B	88	THR	2.8
2	B	76	ARG	2.6
2	D	17	VAL	2.6
2	B	18	LEU	2.6
2	B	82	ILE	2.6
2	D	18	LEU	2.6
2	D	75	TYR	2.4
2	B	2	LEU	2.4
1	A	578	ARG	2.4
1	C	604	TYR	2.4
2	D	35	GLY	2.4
1	A	533	TYR	2.4
1	A	573	TYR	2.3
2	D	90	SER	2.3
2	B	1	MET	2.3
1	C	655	LEU	2.2

Continued on next page...

Continued from previous page...

Mol	Chain	Res	Type	RSRZ
1	C	682[A]	GLN	2.1
2	B	38	PRO	2.1

6.2 Non-standard residues in protein, DNA, RNA chains [i](#)

There are no non-standard protein/DNA/RNA residues in this entry.

6.3 Carbohydrates [i](#)

There are no oligosaccharides in this entry.

6.4 Ligands [i](#)

In the following table, the Atoms column lists the number of modelled atoms in the group and the number defined in the chemical component dictionary. The B-factors column lists the minimum, median, 95th percentile and maximum values of B factors of atoms in the group. The column labelled 'Q< 0.9' lists the number of atoms with occupancy less than 0.9.

Mol	Type	Chain	Res	Atoms	RSCC	RSR	B-factors(\AA^2)	Q<0.9
4	PG4	D	801	13/13	0.74	0.17	55,59,68,71	0
5	PEG	D	802	7/7	0.77	0.15	57,69,77,81	0
3	GOL	D	803	6/6	0.86	0.14	48,51,56,57	0
3	GOL	C	801	6/6	0.89	0.11	31,36,46,55	0

6.5 Other polymers [i](#)

There are no such residues in this entry.