



Full wwPDB EM Validation Report ⓘ

Jul 16, 2025 – 12:47 AM JST

PDB ID : 8IM7 / pdb_00008im7
EMDB ID : EMD-35572
Title : Human gamma-secretase treated with ganglioside GM1
Authors : Zhou, R.; Yang, G.; Shi, Y.
Deposited on : 2023-03-06
Resolution : 3.40 Å(reported)

This is a Full wwPDB EM Validation Report for a publicly released PDB entry.

We welcome your comments at validation@mail.wwpdb.org

A user guide is available at

<https://www.wwpdb.org/validation/2017/EMValidationReportHelp>

with specific help available everywhere you see the ⓘ symbol.

The types of validation reports are described at

<http://www.wwpdb.org/validation/2017/FAQs#types>.

The following versions of software and data (see [references ⓘ](#)) were used in the production of this report:

EMDB validation analysis : **FAILED**
Mogul : 1.8.5 (274361), CSD as541be (2020)
MolProbity : 4-5-2 with Phenix2.0rc1
buster-report : 1.1.7 (2018)
Percentile statistics : 20231227.v01 (using entries in the PDB archive December 27th 2023)
MapQ : **FAILED**
Ideal geometry (proteins) : Engh & Huber (2001)
Ideal geometry (DNA, RNA) : Parkinson et al. (1996)
Validation Pipeline (wwPDB-VP) : 2.44

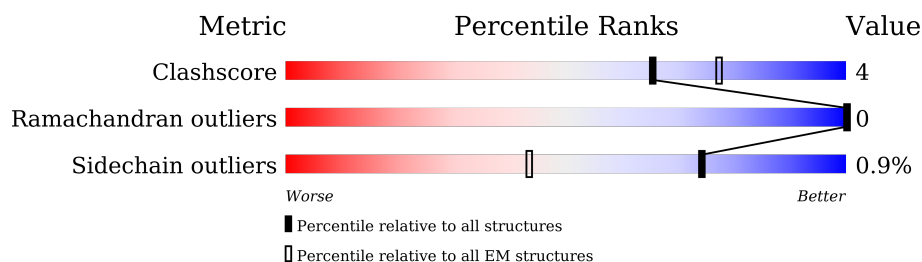
1 Overall quality at a glance

The following experimental techniques were used to determine the structure:

ELECTRON MICROSCOPY

The reported resolution of this entry is 3.40 Å.

Percentile scores (ranging between 0-100) for global validation metrics of the entry are shown in the following graphic. The table shows the number of entries on which the scores are based.



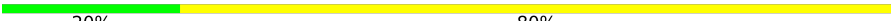
Metric	Whole archive (#Entries)	EM structures (#Entries)
Clashscore	210492	15764
Ramachandran outliers	207382	16835
Sidechain outliers	206894	16415

The table below summarises the geometric issues observed across the polymeric chains and their fit to the map. The red, orange, yellow and green segments of the bar indicate the fraction of residues that contain outliers for ≥ 3 , 2, 1 and 0 types of geometric quality criteria respectively. A grey segment represents the fraction of residues that are not modelled. The numeric value for each fraction is indicated below the corresponding segment, with a dot representing fractions $\leq 5\%$

Mol	Chain	Length	Quality of chain
1	A	709	85% 9% 6%
2	B	467	53% 7% 39%
3	C	265	85% 7% 8%
4	D	101	88% 7% 5%
5	E	2	50% 50%
5	G	2	50% 50%
5	H	2	100%
5	I	2	50% 50%
5	J	2	50% 50%

Continued on next page...

Continued from previous page...

Mol	Chain	Length	Quality of chain
6	F	5	 A horizontal bar chart showing the quality of chain F. The bar is divided into two segments: a green segment on the left representing 20% and a yellow segment on the right representing 80%. The labels '20%' and '80%' are positioned below their respective segments.

2 Entry composition [i](#)

There are 9 unique types of molecules in this entry. The entry contains 10587 atoms, of which 0 are hydrogens and 0 are deuteriums.

In the tables below, the AltConf column contains the number of residues with at least one atom in alternate conformation and the Trace column contains the number of residues modelled with at most 2 atoms.

- Molecule 1 is a protein called Nicastrin.

Mol	Chain	Residues	Atoms					AltConf	Trace
1	A	667	Total	C	N	O	S	0	0
			5235	3321	890	1003	21		

- Molecule 2 is a protein called Presenilin-1 CTF12.

Mol	Chain	Residues	Atoms					AltConf	Trace
2	B	283	Total	C	N	O	S	0	0
			2247	1533	334	368	12		

- Molecule 3 is a protein called Gamma-secretase subunit APH-1A.

Mol	Chain	Residues	Atoms					AltConf	Trace
3	C	243	Total	C	N	O	S	0	0
			1872	1254	299	315	4		

- Molecule 4 is a protein called Gamma-secretase subunit PEN-2.

Mol	Chain	Residues	Atoms					AltConf	Trace
4	D	96	Total	C	N	O	S	0	0
			814	559	126	128	1		

- Molecule 5 is an oligosaccharide called 2-acetamido-2-deoxy-beta-D-glucopyranose-(1-4)-2-acetamido-2-deoxy-beta-D-glucopyranose.



Mol	Chain	Residues	Atoms				AltConf	Trace
5	E	2	Total	C	N	O	0	0
			28	16	2	10		
5	G	2	Total	C	N	O	0	0
			28	16	2	10		

Continued on next page...

Continued from previous page...

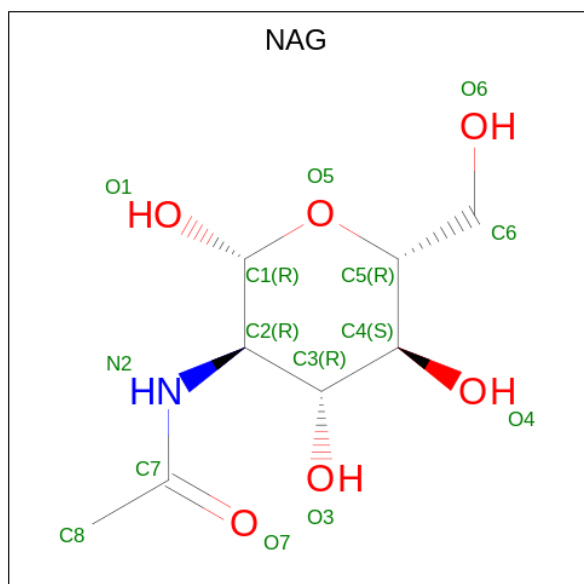
Mol	Chain	Residues	Atoms				AltConf	Trace
5	H	2	Total	C	N	O	0	0
			28	16	2	10		
5	I	2	Total	C	N	O	0	0
			28	16	2	10		
5	J	2	Total	C	N	O	0	0
			28	16	2	10		

- Molecule 6 is an oligosaccharide called beta-D-mannopyranose-(1-3)-[beta-D-mannopyranos e-(1-6)]beta-D-mannopyranose-(1-4)-2-acetamido-2-deoxy-beta-D-glucopyranose-(1-4)-2-acetamido-2-deoxy-beta-D-glucopyranose.



Mol	Chain	Residues	Atoms				AltConf	Trace
6	F	5	Total	C	N	O	0	0
			61	34	2	25		

- Molecule 7 is 2-acetamido-2-deoxy-beta-D-glucopyranose (CCD ID: NAG) (formula: C₈H₁₅NO₆).



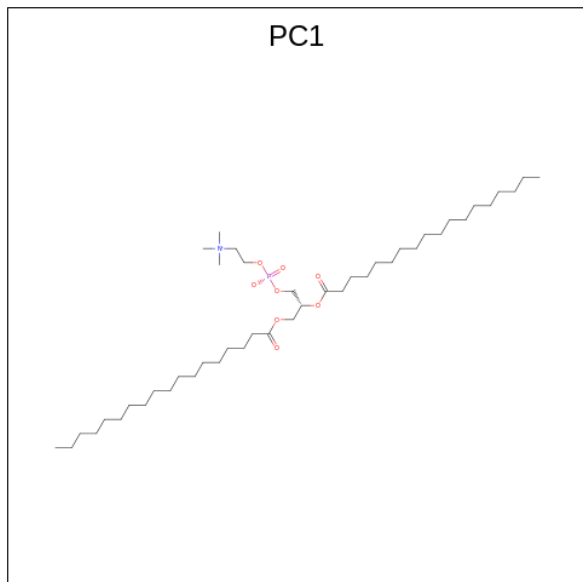
Mol	Chain	Residues	Atoms				AltConf
7	A	1	Total	C	N	O	0
			14	8	1	5	

Continued on next page...

Continued from previous page...

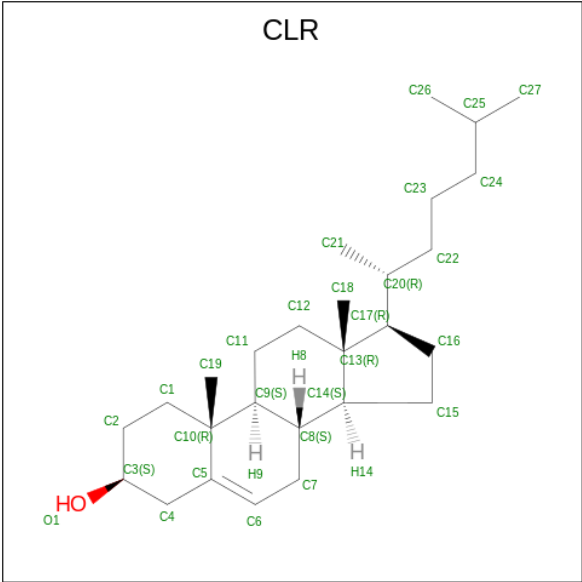
Mol	Chain	Residues	Atoms				AltConf
7	A	1	Total	C	N	O	0
			14	8	1	5	
7	A	1	Total	C	N	O	0
			14	8	1	5	
7	A	1	Total	C	N	O	0
			14	8	1	5	
7	A	1	Total	C	N	O	0
			14	8	1	5	
7	A	1	Total	C	N	O	0
			14	8	1	5	

- Molecule 8 is 1,2-DIACYL-SN-GLYCERO-3-PHOSPHOCHOLINE (CCD ID: PC1) (formula: $C_{44}H_{88}NO_8P$).



Mol	Chain	Residues	Atoms					AltConf
8	B	1	Total	C	N	O	P	0
			37	27	1	8	1	
8	C	1	Total	C	N	O	P	0
			41	31	1	8	1	

- Molecule 9 is CHOLESTEROL (CCD ID: CLR) (formula: $C_{27}H_{46}O$).




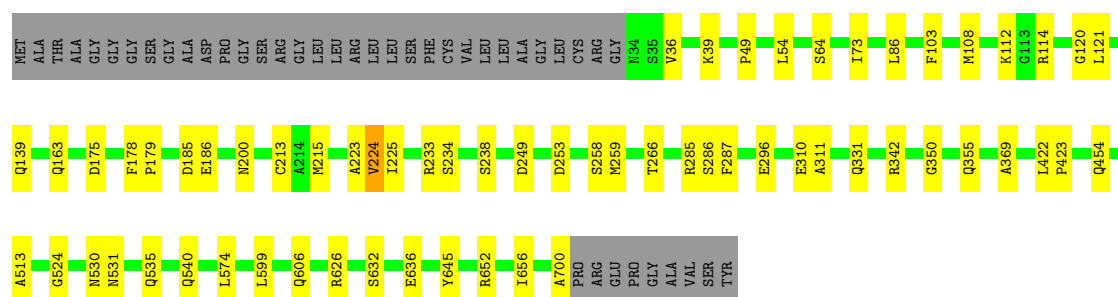
Mol	Chain	Residues	Atoms			AltConf
9	C	1	Total	C	O	0
			28	27	1	
9	C	1	Total	C	O	0
			28	27	1	

3 Residue-property plots

These plots are drawn for all protein, RNA, DNA and oligosaccharide chains in the entry. The first graphic for a chain summarises the proportions of the various outlier classes displayed in the second graphic. The second graphic shows the sequence view annotated by issues in geometry. Residues are color-coded according to the number of geometric quality criteria for which they contain at least one outlier: green = 0, yellow = 1, orange = 2 and red = 3 or more. Stretches of 2 or more consecutive residues without any outlier are shown as a green connector. Residues present in the sample, but not in the model, are shown in grey.

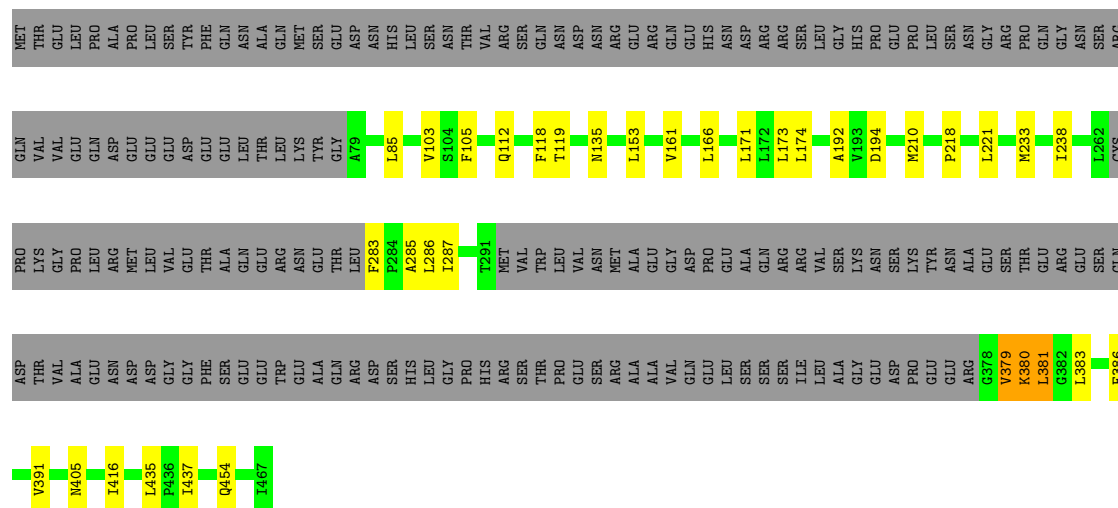
• Molecule 1: Nicastrin

Chain A: 




• Molecule 2: Presenilin-1 CTF12

Chain B: 




• Molecule 3: Gamma-secretase subunit APH-1A

Chain C: 



• Molecule 4: Gamma-secretase subunit PEN-2

Chain D:  88% 7% 5%



- Molecule 5: 2-acetamido-2-deoxy-beta-D-glucopyranose-(1-4)-2-acetamido-2-deoxy-beta-D-glucopyranose

Chain E:  50% 50%



- Molecule 5: 2-acetamido-2-deoxy-beta-D-glucopyranose-(1-4)-2-acetamido-2-deoxy-beta-D-glucopyranose

Chain G:  50% 50%



- Molecule 5: 2-acetamido-2-deoxy-beta-D-glucopyranose-(1-4)-2-acetamido-2-deoxy-beta-D-glucopyranose

Chain H:  100%



- Molecule 5: 2-acetamido-2-deoxy-beta-D-glucopyranose-(1-4)-2-acetamido-2-deoxy-beta-D-glucopyranose

Chain I:  50% 50%



- Molecule 5: 2-acetamido-2-deoxy-beta-D-glucopyranose-(1-4)-2-acetamido-2-deoxy-beta-D-glucopyranose

Chain J:  50% 50%



- Molecule 6: beta-D-mannopyranose-(1-3)-[beta-D-mannopyranose-(1-6)]beta-D-mannopyranose-(1-4)-2-acetamido-2-deoxy-beta-D-glucopyranose-(1-4)-2-acetamido-2-deoxy-beta-D-glucopyranose

Chain F:  20% 80%

MAG1	MAG2	BMA3	BMA4	BMA5
------	------	------	------	------

4 Experimental information

Property	Value	Source
EM reconstruction method	SINGLE PARTICLE	Depositor
Imposed symmetry	POINT, Not provided	
Number of particles used	134908	Depositor
Resolution determination method	FSC 0.143 CUT-OFF	Depositor
CTF correction method	PHASE FLIPPING AND AMPLITUDE CORRECTION	Depositor
Microscope	FEI TITAN KRIOS	Depositor
Voltage (kV)	300	Depositor
Electron dose ($e^-/\text{\AA}^2$)	50	Depositor
Minimum defocus (nm)	1500	Depositor
Maximum defocus (nm)	1800	Depositor
Magnification	Not provided	
Image detector	GATAN K3 (6k x 4k)	Depositor

5 Model quality [i](#)

5.1 Standard geometry [i](#)

Bond lengths and bond angles in the following residue types are not validated in this section: NAG, CLR, PC1, BMA

The Z score for a bond length (or angle) is the number of standard deviations the observed value is removed from the expected value. A bond length (or angle) with $|Z| > 5$ is considered an outlier worth inspection. RMSZ is the root-mean-square of all Z scores of the bond lengths (or angles).

Mol	Chain	Bond lengths		Bond angles	
		RMSZ	$\# Z > 5$	RMSZ	$\# Z > 5$
1	A	0.44	0/5358	0.61	0/7302
2	B	0.38	0/2306	0.58	0/3148
3	C	0.45	0/1924	0.62	0/2624
4	D	0.30	0/847	0.51	0/1157
All	All	0.42	0/10435	0.60	0/14231

There are no bond length outliers.

There are no bond angle outliers.

There are no chirality outliers.

There are no planarity outliers.

5.2 Too-close contacts [i](#)

In the following table, the Non-H and H(model) columns list the number of non-hydrogen atoms and hydrogen atoms in the chain respectively. The H(added) column lists the number of hydrogen atoms added and optimized by MolProbity. The Clashes column lists the number of clashes within the asymmetric unit, whereas Symm-Clashes lists symmetry-related clashes.

Mol	Chain	Non-H	H(model)	H(added)	Clashes	Symm-Clashes
1	A	5235	0	5126	36	0
2	B	2247	0	2367	31	0
3	C	1872	0	1911	13	0
4	D	814	0	804	6	0
5	E	28	0	25	0	0
5	G	28	0	25	0	0
5	H	28	0	25	0	0
5	I	28	0	25	0	0
5	J	28	0	25	0	0

Continued on next page...

Continued from previous page...

Mol	Chain	Non-H	H(model)	H(added)	Clashes	Symm-Clashes
6	F	61	0	52	0	0
7	A	84	0	78	1	0
8	B	37	0	48	2	0
8	C	41	0	56	0	0
9	C	56	0	92	3	0
All	All	10587	0	10659	80	0

The all-atom clashscore is defined as the number of clashes found per 1000 atoms (including hydrogen atoms). The all-atom clashscore for this structure is 4.

All (80) close contacts within the same asymmetric unit are listed below, sorted by their clash magnitude.

Atom-1	Atom-2	Interatomic distance (Å)	Clash overlap (Å)
2:B:381:LEU:CD2	2:B:386:PHE:CE2	2.31	1.14
2:B:381:LEU:HD23	2:B:386:PHE:CE2	1.86	1.10
2:B:381:LEU:HD23	2:B:386:PHE:HE2	1.24	0.96
2:B:381:LEU:HD21	2:B:386:PHE:CE2	2.14	0.82
2:B:405:ASN:HD22	2:B:454:GLN:HE22	1.36	0.73
2:B:287:ILE:HD11	2:B:380:LYS:HG2	1.72	0.71
2:B:381:LEU:CD2	2:B:386:PHE:CZ	2.74	0.70
1:A:224:VAL:HG11	1:A:233:ARG:HH12	1.62	0.65
1:A:108:MET:HE1	1:A:121:LEU:HD21	1.80	0.63
2:B:405:ASN:HD21	3:C:136:ASN:HD21	1.46	0.63
2:B:85:LEU:HD11	2:B:379:VAL:HG11	1.82	0.62
1:A:54:LEU:HD11	1:A:223:ALA:HB1	1.81	0.62
1:A:285:ARG:HG2	1:A:454:GLN:HE21	1.68	0.58
1:A:530:ASN:OD1	1:A:535:GLN:NE2	2.36	0.58
2:B:416:ILE:HG13	3:C:40:PHE:HB2	1.86	0.58
2:B:283:PHE:O	2:B:287:ILE:HG21	2.03	0.58
2:B:85:LEU:HD21	2:B:379:VAL:CG1	2.35	0.57
1:A:599:LEU:O	1:A:626:ARG:NH2	2.38	0.55
1:A:632:SER:OG	1:A:645:TYR:O	2.24	0.55
2:B:194:ASP:OD2	4:D:74:TRP:NE1	2.39	0.55
4:D:39:ARG:HA	4:D:43:LEU:HD13	1.87	0.55
2:B:118:PHE:O	2:B:135:ASN:ND2	2.40	0.55
1:A:524:GLY:HA2	1:A:531:ASN:HD21	1.73	0.54
1:A:86:LEU:HD22	1:A:114:ARG:HD2	1.91	0.53
2:B:283:PHE:O	2:B:287:ILE:CG2	2.57	0.52
3:C:174:TRP:HE1	3:C:224:MET:HE3	1.72	0.52
1:A:253:ASP:HB3	1:A:331:GLN:HG2	1.91	0.52
1:A:258:SER:OG	1:A:259:MET:N	2.43	0.52

Continued on next page...

Continued from previous page...

Atom-1	Atom-2	Interatomic distance (Å)	Clash overlap (Å)
3:C:80:VAL:HG13	3:C:197:HIS:CD2	2.46	0.51
1:A:286:SER:OG	1:A:287:PHE:N	2.42	0.51
1:A:296:GLU:HG2	1:A:369:ALA:HB3	1.92	0.51
1:A:39:LYS:HB3	3:C:147:VAL:HG13	1.92	0.50
4:D:39:ARG:HG3	4:D:43:LEU:HD22	1.94	0.50
2:B:192:ALA:O	4:D:79:GLN:NE2	2.40	0.49
2:B:174:LEU:HD12	2:B:210:MET:HE2	1.95	0.49
2:B:194:ASP:OD1	2:B:194:ASP:N	2.44	0.49
1:A:224:VAL:HG11	1:A:233:ARG:NH1	2.26	0.48
9:C:302:CLR:H121	9:C:302:CLR:H221	1.95	0.48
1:A:36:VAL:HG21	3:C:137:ILE:HG22	1.95	0.48
1:A:64:SER:HB2	1:A:179:PRO:HG3	1.95	0.48
1:A:249:ASP:OD2	1:A:652:ARG:NH1	2.47	0.47
2:B:166:LEU:HD21	2:B:285:ALA:HB3	1.97	0.47
1:A:120:GLY:H	1:A:178:PHE:HB2	1.79	0.47
1:A:234:SER:O	1:A:238:SER:OG	2.30	0.46
2:B:103:VAL:HG12	2:B:105:PHE:H	1.81	0.46
2:B:173:LEU:HD21	2:B:233:MET:HE3	1.98	0.45
4:D:7:SER:OG	4:D:9:GLU:OE1	2.32	0.45
1:A:49:PRO:HG3	1:A:656:ILE:HD13	1.99	0.45
3:C:235:SER:H	3:C:238:SER:HB2	1.82	0.44
1:A:540:GLN:HA	1:A:606:GLN:HE21	1.81	0.44
1:A:310:GLU:HB2	1:A:574:LEU:HD23	1.99	0.44
2:B:218:PRO:HG2	2:B:221:LEU:HB3	2.00	0.43
3:C:211:GLU:HB3	9:C:302:CLR:H193	2.00	0.43
2:B:238:ILE:HD11	2:B:391:VAL:HA	2.00	0.43
2:B:112:GLN:HE22	2:B:119:THR:HA	1.83	0.43
1:A:73:ILE:HD11	1:A:215:MET:HB2	2.01	0.43
8:B:501:PC1:H331	3:C:135:ILE:HD11	2.01	0.43
8:B:501:PC1:H351	3:C:135:ILE:HD11	2.00	0.43
1:A:266:THR:HB	7:A:804:NAG:HN2	1.83	0.43
1:A:139:GLN:HG2	1:A:163:GLN:HE21	1.84	0.42
1:A:311:ALA:HB2	1:A:513:ALA:HB2	2.00	0.42
2:B:171:LEU:HD23	2:B:210:MET:HE3	2.02	0.42
2:B:153:LEU:HD13	2:B:161:VAL:HG11	2.01	0.42
2:B:381:LEU:HD22	2:B:386:PHE:CZ	2.54	0.42
1:A:700:ALA:O	3:C:115:ARG:NH1	2.52	0.42
9:C:301:CLR:H213	9:C:301:CLR:H231	1.93	0.42
2:B:383:LEU:HA	2:B:386:PHE:HD2	1.83	0.42
1:A:350:GLY:HA2	1:A:355:GLN:HE22	1.85	0.41
1:A:285:ARG:HG2	1:A:454:GLN:NE2	2.35	0.41

Continued on next page...

Continued from previous page...

Atom-1	Atom-2	Interatomic distance (Å)	Clash overlap (Å)
1:A:103:PHE:CE1	1:A:108:MET:HE3	2.55	0.41
2:B:285:ALA:O	2:B:287:ILE:HG22	2.21	0.41
1:A:185:ASP:OD1	1:A:186:GLU:N	2.53	0.41
1:A:342:ARG:HH12	1:A:636:GLU:HG3	1.85	0.41
3:C:159:THR:HG21	3:C:210:TYR:CD1	2.56	0.41
1:A:112:LYS:NZ	1:A:175:ASP:O	2.51	0.41
2:B:416:ILE:HD13	2:B:416:ILE:HA	1.90	0.41
2:B:192:ALA:HB2	4:D:97:PRO:HD3	2.02	0.41
3:C:203:LEU:HD13	3:C:216:PRO:HB2	2.03	0.40
1:A:200:ASN:HD21	1:A:213:CYS:HB3	1.85	0.40
1:A:422:LEU:HD12	1:A:423:PRO:HD2	2.04	0.40

There are no symmetry-related clashes.

5.3 Torsion angles [i](#)

5.3.1 Protein backbone [i](#)

In the following table, the Percentiles column shows the percent Ramachandran outliers of the chain as a percentile score with respect to all PDB entries followed by that with respect to all EM entries.

The Analysed column shows the number of residues for which the backbone conformation was analysed, and the total number of residues.

Mol	Chain	Analysed	Favoured	Allowed	Outliers	Percentiles	
1	A	665/709 (94%)	606 (91%)	59 (9%)	0	100	100
2	B	277/467 (59%)	265 (96%)	12 (4%)	0	100	100
3	C	241/265 (91%)	232 (96%)	9 (4%)	0	100	100
4	D	94/101 (93%)	89 (95%)	5 (5%)	0	100	100
All	All	1277/1542 (83%)	1192 (93%)	85 (7%)	0	100	100

There are no Ramachandran outliers to report.

5.3.2 Protein sidechains [i](#)

In the following table, the Percentiles column shows the percent sidechain outliers of the chain as a percentile score with respect to all PDB entries followed by that with respect to all EM entries.

The Analysed column shows the number of residues for which the sidechain conformation was analysed, and the total number of residues.

Mol	Chain	Analysed	Rotameric	Outliers	Percentiles	
1	A	584/612 (95%)	582 (100%)	2 (0%)	91	95
2	B	245/408 (60%)	239 (98%)	6 (2%)	44	66
3	C	193/214 (90%)	191 (99%)	2 (1%)	73	83
4	D	84/89 (94%)	84 (100%)	0	100	100
All	All	1106/1323 (84%)	1096 (99%)	10 (1%)	74	86

All (10) residues with a non-rotameric sidechain are listed below:

Mol	Chain	Res	Type
1	A	224	VAL
1	A	225	ILE
2	B	286	LEU
2	B	379	VAL
2	B	380	LYS
2	B	381	LEU
2	B	435	LEU
2	B	437	ILE
3	C	149	ILE
3	C	152	ASP

Sometimes sidechains can be flipped to improve hydrogen bonding and reduce clashes. All (21) such sidechains are listed below:

Mol	Chain	Res	Type
1	A	34	ASN
1	A	74	HIS
1	A	102	HIS
1	A	158	HIS
1	A	163	GLN
1	A	194	GLN
1	A	313	GLN
1	A	355	GLN
1	A	454	GLN
1	A	516	GLN
1	A	531	ASN
1	A	553	HIS
1	A	585	GLN
1	A	606	GLN
1	A	610	HIS

Continued on next page...

Continued from previous page...

Mol	Chain	Res	Type
2	B	112	GLN
2	B	131	HIS
2	B	405	ASN
2	B	454	GLN
2	B	463	HIS
3	C	150	HIS

5.3.3 RNA ⓘ

There are no RNA molecules in this entry.

5.4 Non-standard residues in protein, DNA, RNA chains ⓘ

There are no non-standard protein/DNA/RNA residues in this entry.

5.5 Carbohydrates ⓘ

15 monosaccharides are modelled in this entry.

In the following table, the Counts columns list the number of bonds (or angles) for which Mogul statistics could be retrieved, the number of bonds (or angles) that are observed in the model and the number of bonds (or angles) that are defined in the Chemical Component Dictionary. The Link column lists molecule types, if any, to which the group is linked. The Z score for a bond length (or angle) is the number of standard deviations the observed value is removed from the expected value. A bond length (or angle) with $|Z| > 2$ is considered an outlier worth inspection. RMSZ is the root-mean-square of all Z scores of the bond lengths (or angles).

Mol	Type	Chain	Res	Link	Bond lengths			Bond angles		
					Counts	RMSZ	# $ Z > 2$	Counts	RMSZ	# $ Z > 2$
5	NAG	E	1	1,5	14,14,15	0.37	0	17,19,21	0.41	0
5	NAG	E	2	5	14,14,15	0.23	0	17,19,21	0.66	1 (5%)
6	NAG	F	1	6,1	14,14,15	0.59	1 (7%)	17,19,21	0.57	0
6	NAG	F	2	6	14,14,15	0.45	0	17,19,21	0.64	1 (5%)
6	BMA	F	3	6	11,11,12	0.73	0	15,15,17	0.85	1 (6%)
6	BMA	F	4	6	11,11,12	0.63	0	15,15,17	0.82	0
6	BMA	F	5	6	11,11,12	1.47	4 (36%)	15,15,17	1.83	4 (26%)
5	NAG	G	1	1,5	14,14,15	0.50	0	17,19,21	1.14	2 (11%)
5	NAG	G	2	5	14,14,15	0.41	0	17,19,21	0.63	0
5	NAG	H	1	1,5	14,14,15	0.23	0	17,19,21	0.42	0
5	NAG	H	2	5	14,14,15	0.17	0	17,19,21	0.59	0

Mol	Type	Chain	Res	Link	Bond lengths			Bond angles		
					Counts	RMSZ	# Z > 2	Counts	RMSZ	# Z > 2
5	NAG	I	1	1,5	14,14,15	0.31	0	17,19,21	0.52	0
5	NAG	I	2	5	14,14,15	0.73	1 (7%)	17,19,21	2.22	3 (17%)
5	NAG	J	1	1,5	14,14,15	0.46	0	17,19,21	0.55	0
5	NAG	J	2	5	14,14,15	0.26	0	17,19,21	0.69	1 (5%)

In the following table, the Chirals column lists the number of chiral outliers, the number of chiral centers analysed, the number of these observed in the model and the number defined in the Chemical Component Dictionary. Similar counts are reported in the Torsion and Rings columns. '-' means no outliers of that kind were identified.

Mol	Type	Chain	Res	Link	Chirals	Torsions	Rings
5	NAG	E	1	1,5	-	0/6/23/26	0/1/1/1
5	NAG	E	2	5	-	2/6/23/26	0/1/1/1
6	NAG	F	1	6,1	-	4/6/23/26	0/1/1/1
6	NAG	F	2	6	-	1/6/23/26	0/1/1/1
6	BMA	F	3	6	-	2/2/19/22	0/1/1/1
6	BMA	F	4	6	-	1/2/19/22	0/1/1/1
6	BMA	F	5	6	-	2/2/19/22	0/1/1/1
5	NAG	G	1	1,5	-	1/6/23/26	0/1/1/1
5	NAG	G	2	5	-	4/6/23/26	0/1/1/1
5	NAG	H	1	1,5	-	2/6/23/26	0/1/1/1
5	NAG	H	2	5	-	2/6/23/26	0/1/1/1
5	NAG	I	1	1,5	-	2/6/23/26	0/1/1/1
5	NAG	I	2	5	-	5/6/23/26	0/1/1/1
5	NAG	J	1	1,5	-	2/6/23/26	0/1/1/1
5	NAG	J	2	5	-	0/6/23/26	0/1/1/1

All (6) bond length outliers are listed below:

Mol	Chain	Res	Type	Atoms	Z	Observed(Å)	Ideal(Å)
6	F	5	BMA	O5-C5	2.41	1.48	1.43
6	F	5	BMA	C2-C3	2.37	1.56	1.52
6	F	5	BMA	C1-C2	2.22	1.57	1.52
5	I	2	NAG	C1-C2	2.10	1.55	1.52
6	F	5	BMA	O5-C1	2.08	1.47	1.43
6	F	1	NAG	O5-C1	-2.07	1.40	1.43

All (13) bond angle outliers are listed below:

Mol	Chain	Res	Type	Atoms	Z	Observed(°)	Ideal(°)
5	I	2	NAG	C2-N2-C7	7.85	134.08	122.90
6	F	5	BMA	C1-O5-C5	5.27	119.33	112.19
5	I	2	NAG	C1-C2-N2	3.51	116.48	110.49
5	G	1	NAG	C2-N2-C7	3.08	127.28	122.90
5	J	2	NAG	C1-O5-C5	2.48	115.56	112.19
6	F	5	BMA	C2-C3-C4	2.43	115.11	110.89
5	G	1	NAG	C1-O5-C5	2.43	115.49	112.19
6	F	5	BMA	C1-C2-C3	2.31	112.51	109.67
6	F	5	BMA	O5-C1-C2	2.21	114.19	110.77
6	F	2	NAG	C1-O5-C5	2.16	115.12	112.19
5	I	2	NAG	C8-C7-N2	2.13	119.70	116.10
6	F	3	BMA	O2-C2-C3	-2.05	106.03	110.14
5	E	2	NAG	C1-O5-C5	2.05	114.97	112.19

There are no chirality outliers.

All (30) torsion outliers are listed below:

Mol	Chain	Res	Type	Atoms
6	F	5	BMA	C4-C5-C6-O6
5	J	1	NAG	O5-C5-C6-O6
5	I	2	NAG	C4-C5-C6-O6
5	I	1	NAG	O5-C5-C6-O6
6	F	5	BMA	O5-C5-C6-O6
6	F	1	NAG	C4-C5-C6-O6
5	J	1	NAG	C4-C5-C6-O6
5	E	2	NAG	C8-C7-N2-C2
5	E	2	NAG	O7-C7-N2-C2
5	G	2	NAG	C8-C7-N2-C2
5	G	2	NAG	O7-C7-N2-C2
5	H	2	NAG	C8-C7-N2-C2
5	H	2	NAG	O7-C7-N2-C2
5	I	2	NAG	C8-C7-N2-C2
5	I	2	NAG	O7-C7-N2-C2
6	F	1	NAG	C8-C7-N2-C2
6	F	1	NAG	O7-C7-N2-C2
5	I	1	NAG	C4-C5-C6-O6
5	I	2	NAG	O5-C5-C6-O6
5	G	2	NAG	O5-C5-C6-O6
5	G	2	NAG	C4-C5-C6-O6
5	H	1	NAG	C4-C5-C6-O6
6	F	1	NAG	O5-C5-C6-O6
6	F	3	BMA	C4-C5-C6-O6
5	H	1	NAG	O5-C5-C6-O6

Continued on next page...

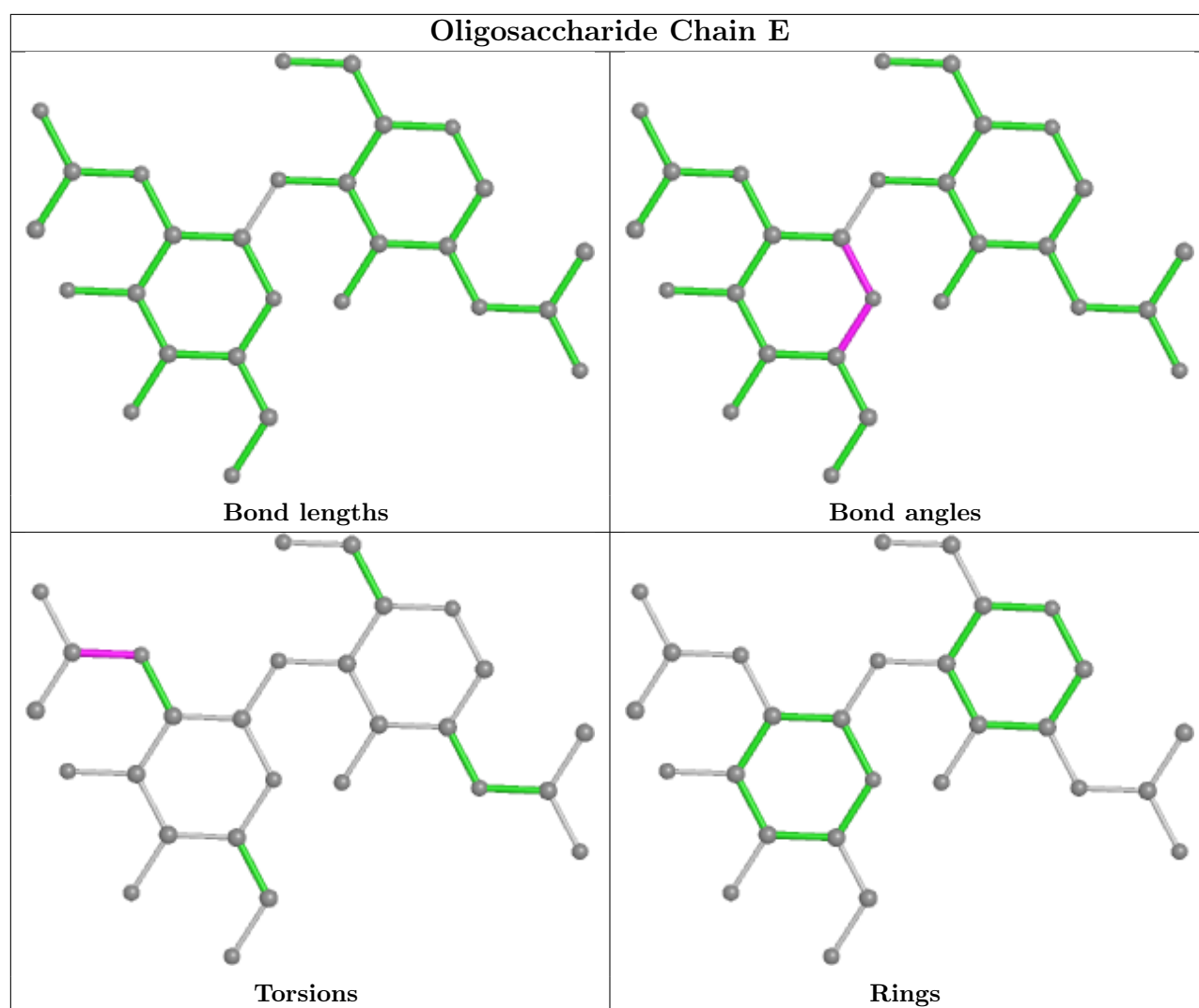
Continued from previous page...

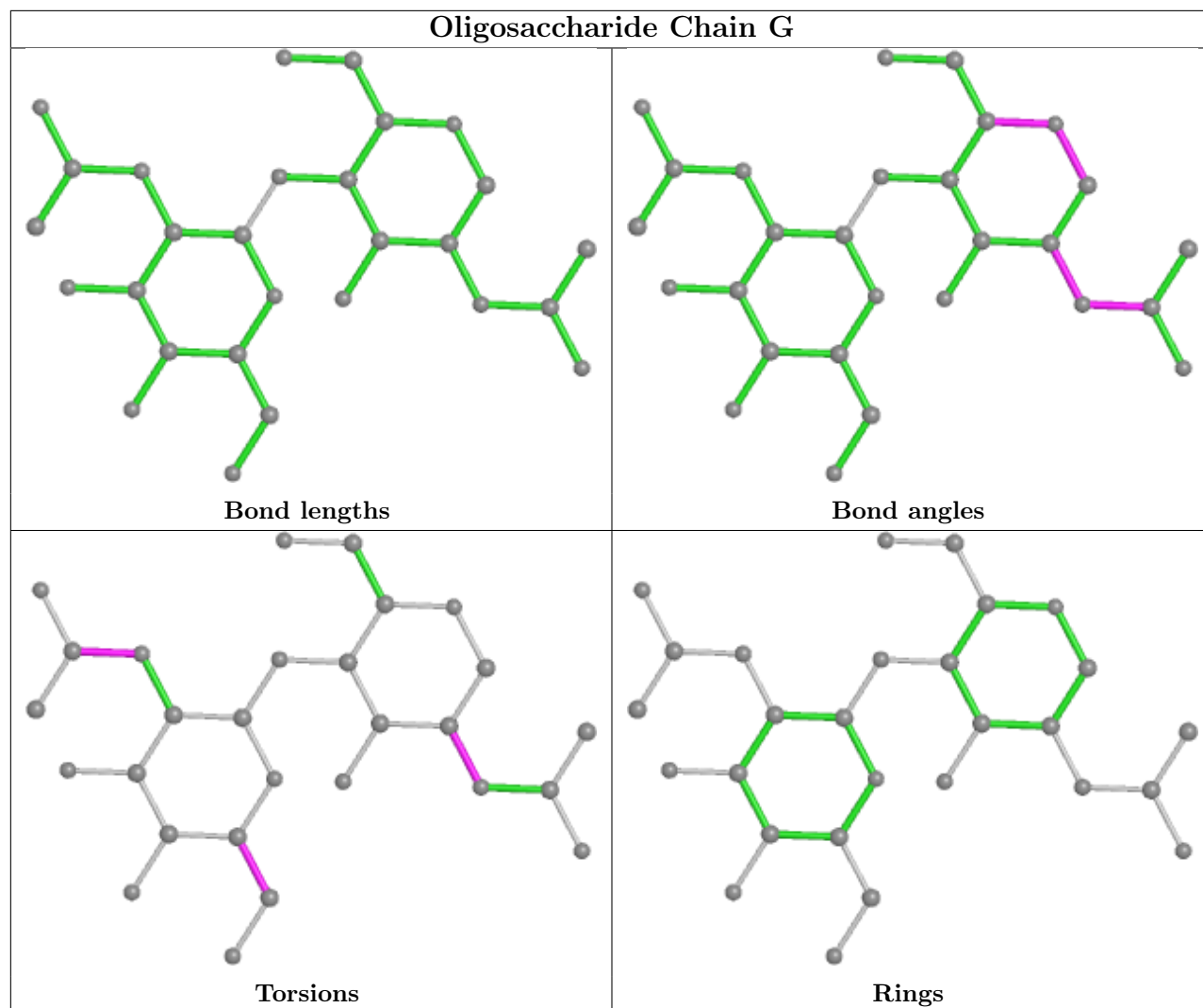
Mol	Chain	Res	Type	Atoms
6	F	2	NAG	O5-C5-C6-O6
6	F	4	BMA	O5-C5-C6-O6
6	F	3	BMA	O5-C5-C6-O6
5	G	1	NAG	C3-C2-N2-C7
5	I	2	NAG	C3-C2-N2-C7

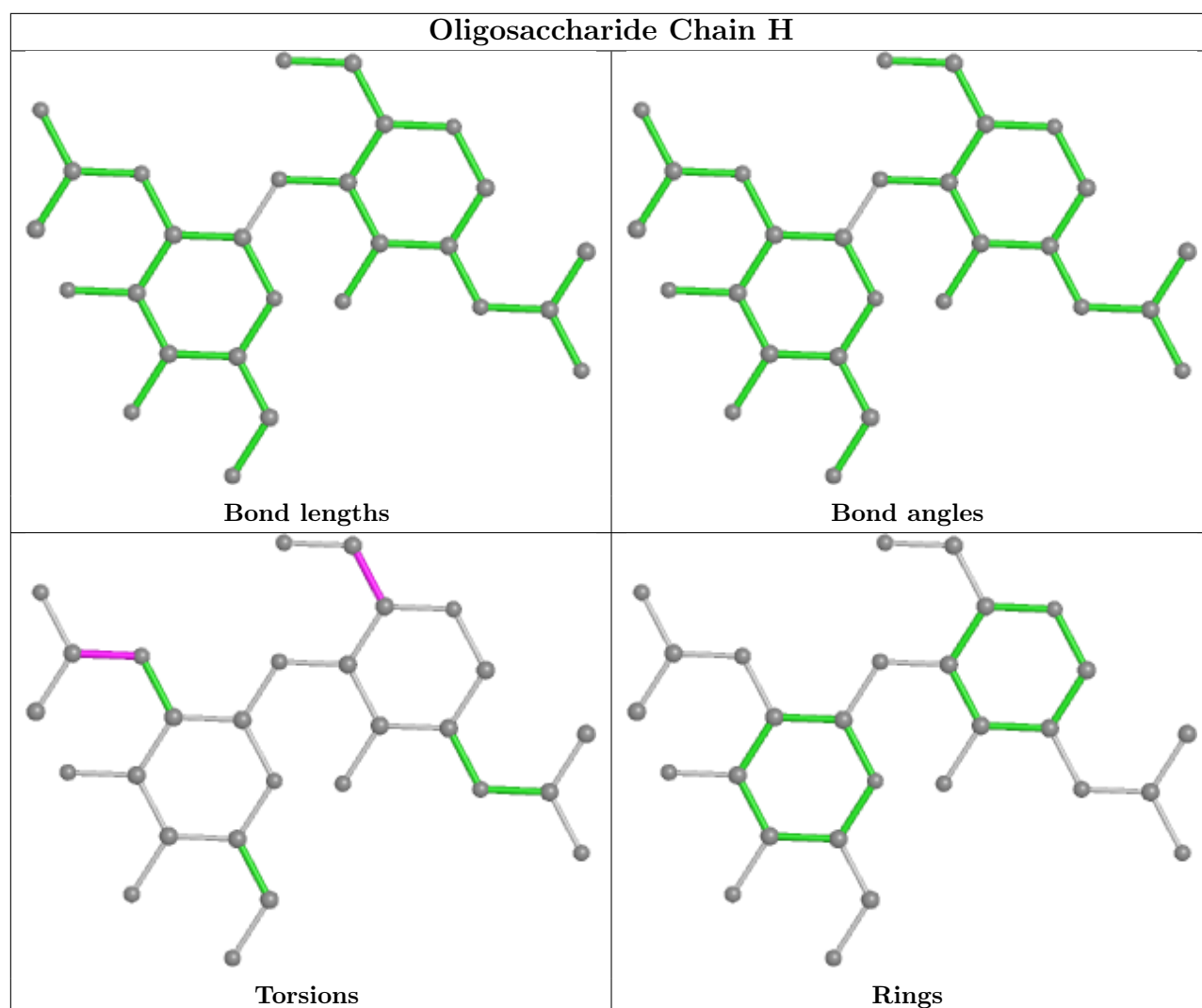
There are no ring outliers.

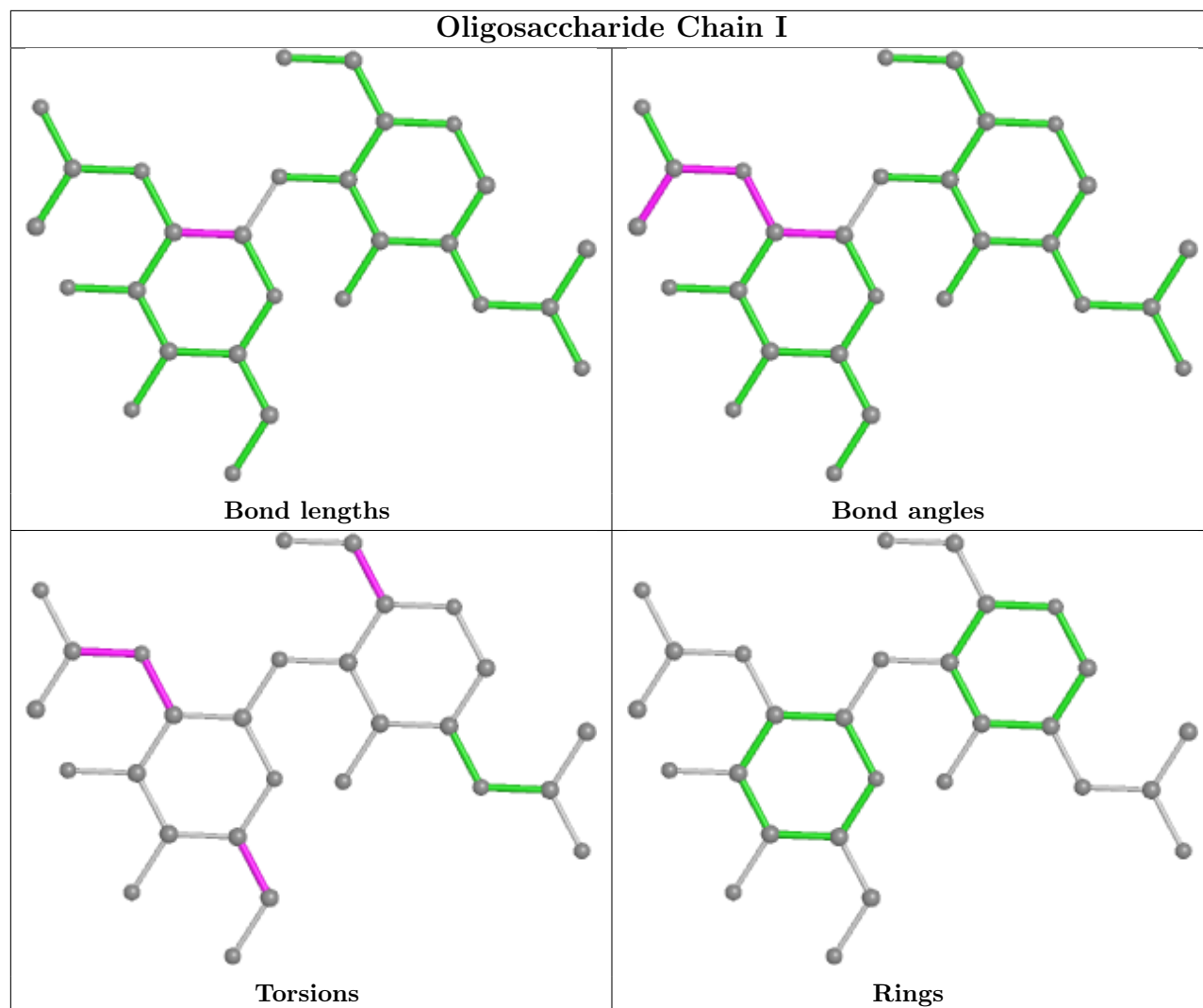
No monomer is involved in short contacts.

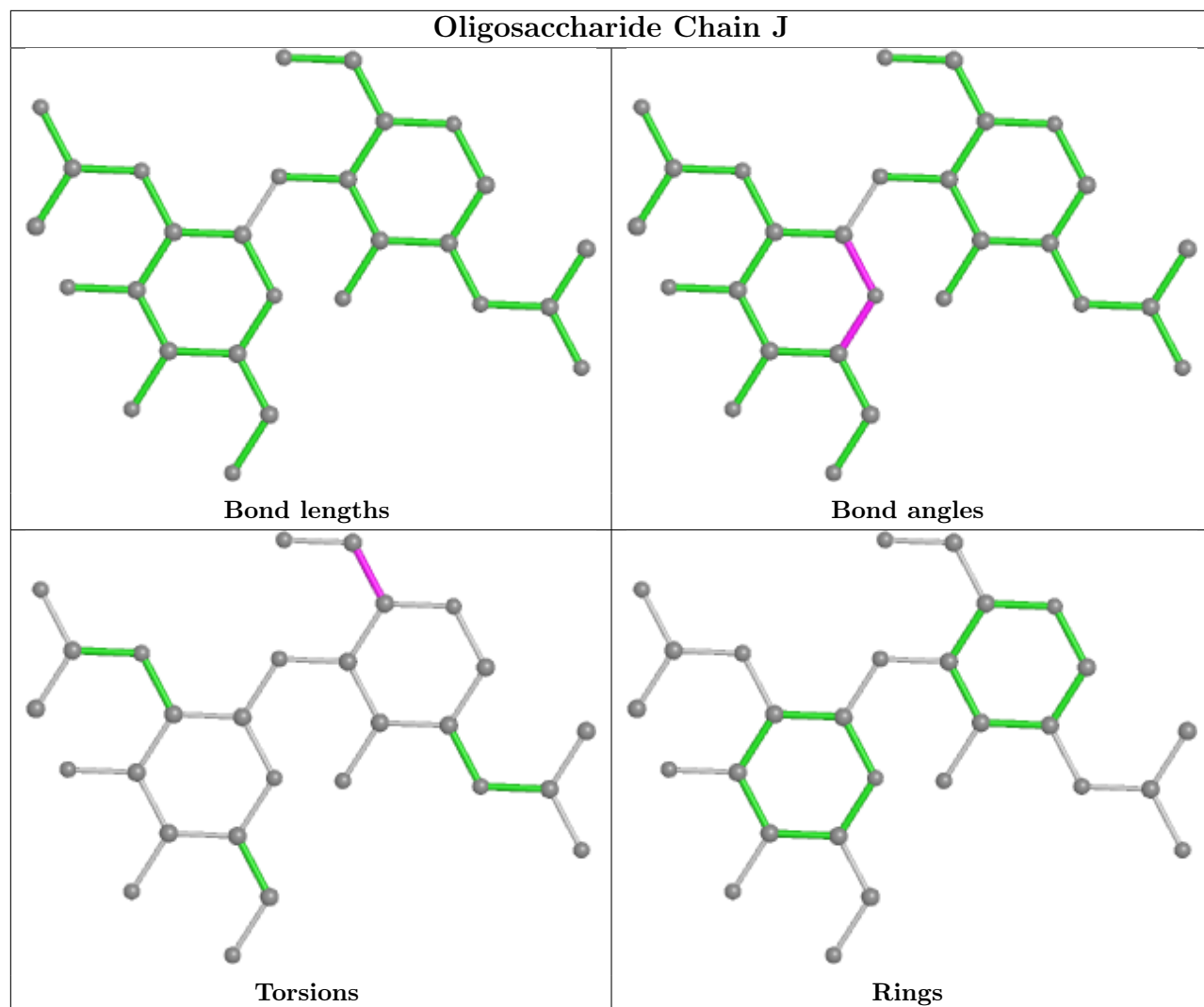
The following is a two-dimensional graphical depiction of Mogul quality analysis of bond lengths, bond angles, torsion angles, and ring geometry for oligosaccharide.

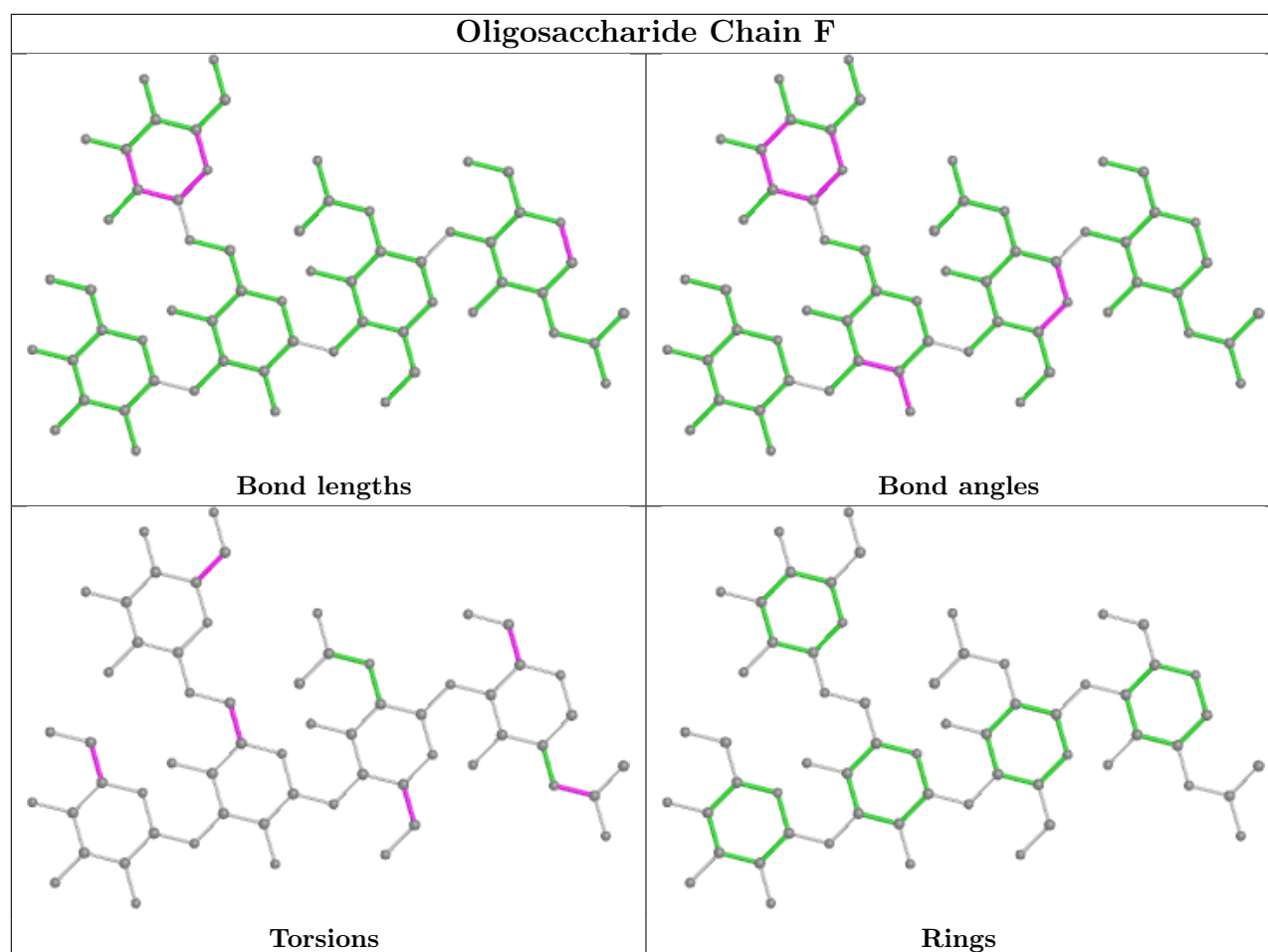












5.6 Ligand geometry [i](#)

10 ligands are modelled in this entry.

In the following table, the Counts columns list the number of bonds (or angles) for which Mogul statistics could be retrieved, the number of bonds (or angles) that are observed in the model and the number of bonds (or angles) that are defined in the Chemical Component Dictionary. The Link column lists molecule types, if any, to which the group is linked. The Z score for a bond length (or angle) is the number of standard deviations the observed value is removed from the expected value. A bond length (or angle) with $|Z| > 2$ is considered an outlier worth inspection. RMSZ is the root-mean-square of all Z scores of the bond lengths (or angles).

Mol	Type	Chain	Res	Link	Bond lengths			Bond angles		
					Counts	RMSZ	$\# Z > 2$	Counts	RMSZ	$\# Z > 2$
7	NAG	A	801	1	14,14,15	0.45	0	17,19,21	0.54	0
7	NAG	A	804	1	14,14,15	1.13	1 (7%)	17,19,21	2.24	4 (23%)
9	CLR	C	302	-	31,31,31	0.34	0	48,48,48	0.87	1 (2%)
7	NAG	A	806	1	14,14,15	0.37	0	17,19,21	0.71	1 (5%)
7	NAG	A	803	1	14,14,15	0.35	0	17,19,21	0.42	0
7	NAG	A	802	1	14,14,15	0.65	1 (7%)	17,19,21	1.01	1 (5%)

Mol	Type	Chain	Res	Link	Bond lengths			Bond angles		
					Counts	RMSZ	# Z > 2	Counts	RMSZ	# Z > 2
9	CLR	C	301	-	31,31,31	0.31	0	48,48,48	0.66	0
7	NAG	A	805	1	14,14,15	0.30	0	17,19,21	0.52	0
8	PC1	C	303	-	40,40,53	0.31	0	46,48,61	0.47	0
8	PC1	B	501	-	36,36,53	0.34	0	42,44,61	0.43	0

In the following table, the Chirals column lists the number of chiral outliers, the number of chiral centers analysed, the number of these observed in the model and the number defined in the Chemical Component Dictionary. Similar counts are reported in the Torsion and Rings columns. '-' means no outliers of that kind were identified.

Mol	Type	Chain	Res	Link	Chirals	Torsions	Rings
7	NAG	A	801	1	-	2/6/23/26	0/1/1/1
7	NAG	A	804	1	-	5/6/23/26	0/1/1/1
9	CLR	C	302	-	-	7/10/68/68	0/4/4/4
7	NAG	A	806	1	-	2/6/23/26	0/1/1/1
7	NAG	A	803	1	-	0/6/23/26	0/1/1/1
7	NAG	A	802	1	-	3/6/23/26	0/1/1/1
9	CLR	C	301	-	-	2/10/68/68	0/4/4/4
7	NAG	A	805	1	-	2/6/23/26	0/1/1/1
8	PC1	C	303	-	-	10/44/44/57	-
8	PC1	B	501	-	-	5/40/40/57	-

All (2) bond length outliers are listed below:

Mol	Chain	Res	Type	Atoms	Z	Observed(Å)	Ideal(Å)
7	A	804	NAG	C1-C2	3.73	1.57	1.52
7	A	802	NAG	C1-C2	2.20	1.55	1.52

All (7) bond angle outliers are listed below:

Mol	Chain	Res	Type	Atoms	Z	Observed(°)	Ideal(°)
7	A	804	NAG	C2-N2-C7	7.70	133.87	122.90
9	C	302	CLR	C13-C17-C20	4.34	126.29	119.49
7	A	804	NAG	C1-C2-N2	3.53	116.52	110.49
7	A	802	NAG	C2-N2-C7	2.93	127.07	122.90
7	A	806	NAG	C1-O5-C5	2.54	115.63	112.19
7	A	804	NAG	C1-O5-C5	2.23	115.22	112.19
7	A	804	NAG	C8-C7-N2	2.14	119.72	116.10

There are no chirality outliers.

All (38) torsion outliers are listed below:

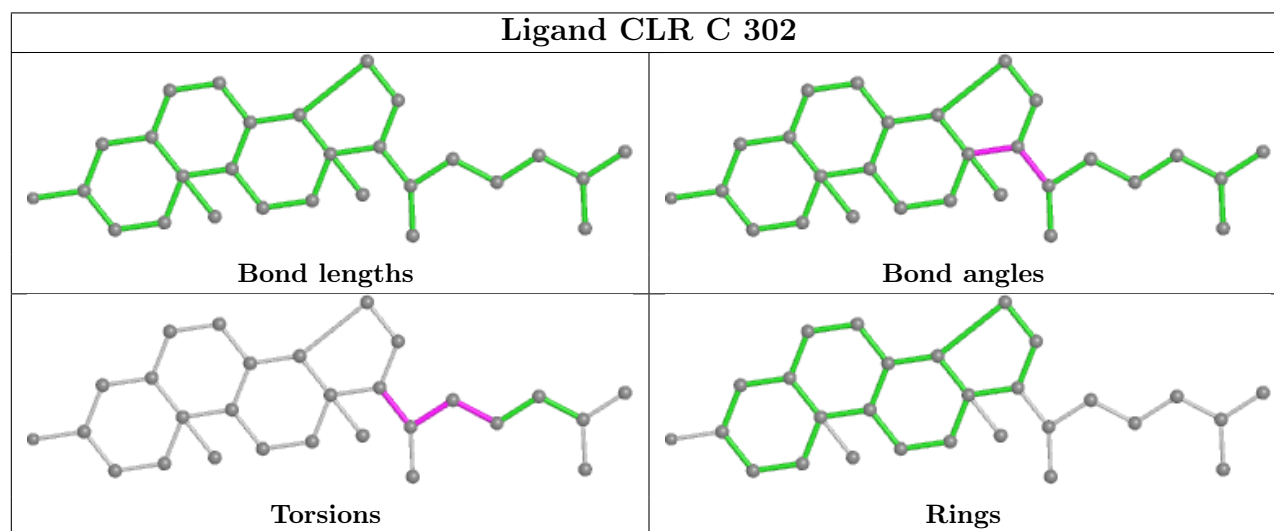
Mol	Chain	Res	Type	Atoms
8	B	501	PC1	C32-C31-O31-C3
8	C	303	PC1	C11-O13-P-O14
8	C	303	PC1	O22-C21-O21-C2
9	C	302	CLR	C13-C17-C20-C22
9	C	302	CLR	C16-C17-C20-C21
8	B	501	PC1	O32-C31-O31-C3
9	C	302	CLR	C13-C17-C20-C21
9	C	302	CLR	C16-C17-C20-C22
7	A	802	NAG	O5-C5-C6-O6
8	C	303	PC1	C22-C21-O21-C2
9	C	302	CLR	C21-C20-C22-C23
7	A	801	NAG	O5-C5-C6-O6
7	A	805	NAG	O5-C5-C6-O6
7	A	801	NAG	C4-C5-C6-O6
9	C	302	CLR	C17-C20-C22-C23
7	A	806	NAG	O5-C5-C6-O6
7	A	802	NAG	C4-C5-C6-O6
7	A	806	NAG	C4-C5-C6-O6
7	A	805	NAG	C4-C5-C6-O6
7	A	804	NAG	C8-C7-N2-C2
7	A	804	NAG	O7-C7-N2-C2
9	C	302	CLR	C20-C22-C23-C24
7	A	804	NAG	O5-C5-C6-O6
8	C	303	PC1	C11-O13-P-O11
8	C	303	PC1	C21-C22-C23-C24
7	A	804	NAG	C4-C5-C6-O6
8	C	303	PC1	C12-C11-O13-P
8	C	303	PC1	C35-C36-C37-C38
8	C	303	PC1	O13-C11-C12-N
8	C	303	PC1	C1-C2-O21-C21
8	C	303	PC1	C3-C2-O21-C21
9	C	301	CLR	C17-C20-C22-C23
8	B	501	PC1	O21-C21-C22-C23
7	A	802	NAG	C3-C2-N2-C7
7	A	804	NAG	C3-C2-N2-C7
9	C	301	CLR	C20-C22-C23-C24
8	B	501	PC1	C12-C11-O13-P
8	B	501	PC1	O22-C21-C22-C23

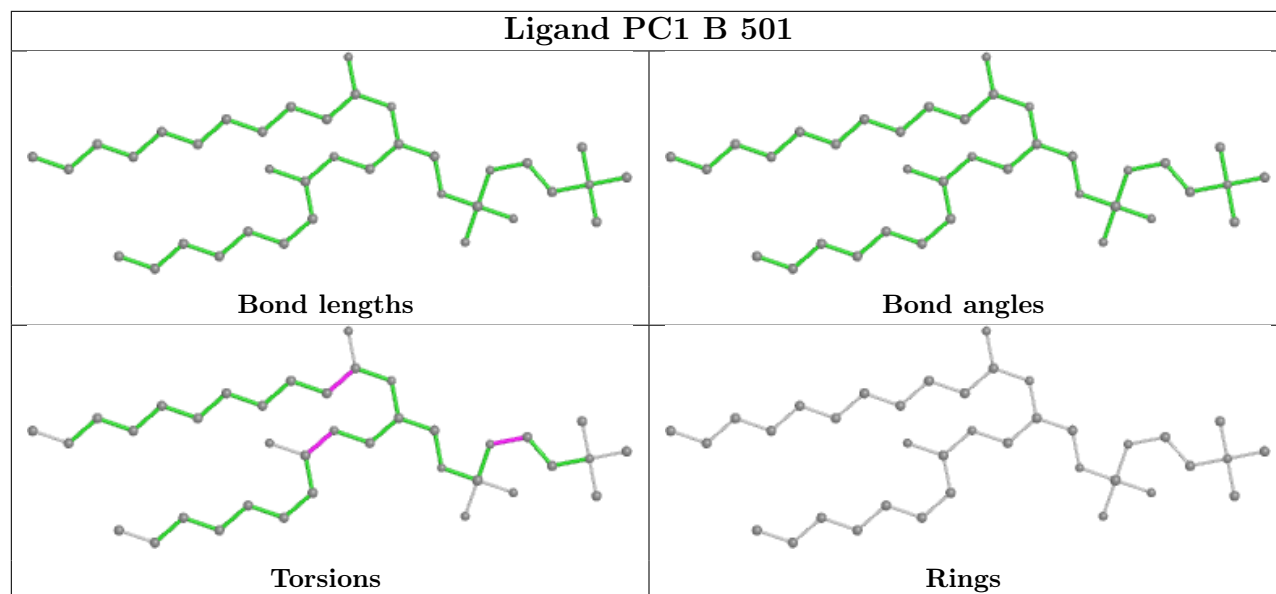
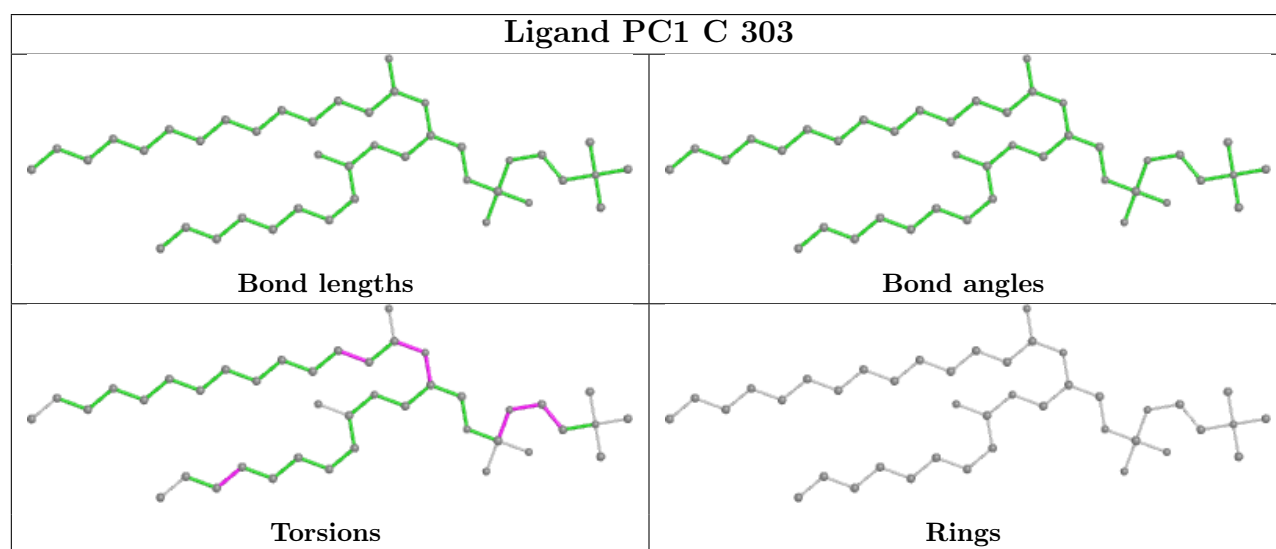
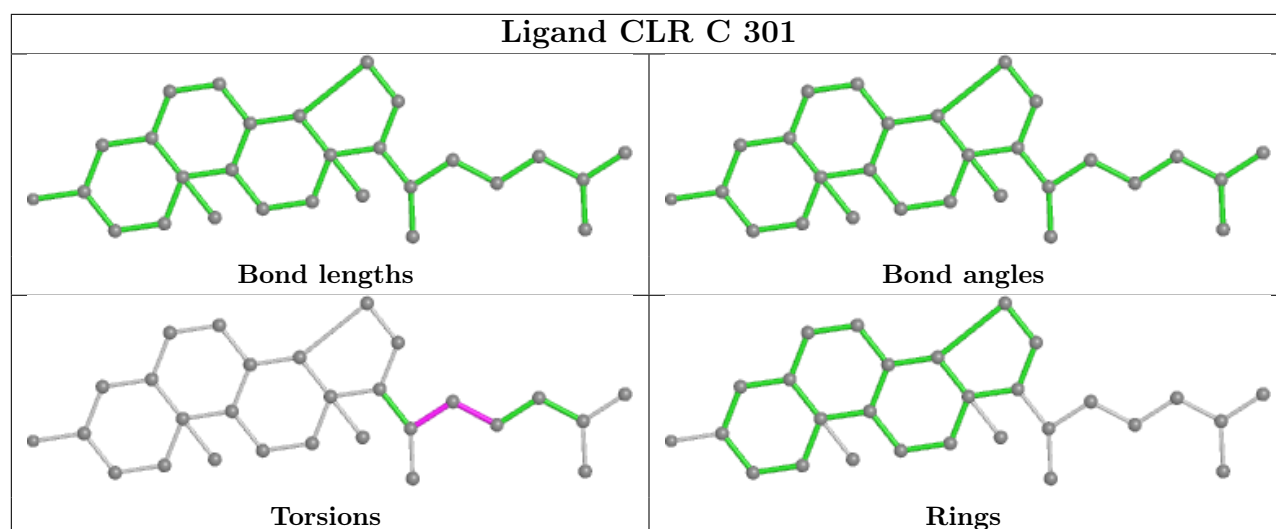
There are no ring outliers.

4 monomers are involved in 6 short contacts:

Mol	Chain	Res	Type	Clashes	Symm-Clashes
7	A	804	NAG	1	0
9	C	302	CLR	2	0
9	C	301	CLR	1	0
8	B	501	PC1	2	0

The following is a two-dimensional graphical depiction of Mogul quality analysis of bond lengths, bond angles, torsion angles, and ring geometry for all instances of the Ligand of Interest. In addition, ligands with molecular weight > 250 and outliers as shown on the validation Tables will also be included. For torsion angles, if less than 5% of the Mogul distribution of torsion angles is within 10 degrees of the torsion angle in question, then that torsion angle is considered an outlier. Any bond that is central to one or more torsion angles identified as an outlier by Mogul will be highlighted in the graph. For rings, the root-mean-square deviation (RMSD) between the ring in question and similar rings identified by Mogul is calculated over all ring torsion angles. If the average RMSD is greater than 60 degrees and the minimal RMSD between the ring in question and any Mogul-identified rings is also greater than 60 degrees, then that ring is considered an outlier. The outliers are highlighted in purple. The color gray indicates Mogul did not find sufficient equivalents in the CSD to analyse the geometry.





5.7 Other polymers

There are no such residues in this entry.

5.8 Polymer linkage issues

There are no chain breaks in this entry.