



Full wwPDB X-ray Structure Validation Report ⓘ

Jun 22, 2024 – 01:33 PM EDT

PDB ID : 5I7H
Title : Mycobacterium tuberculosis CysM in complex with the Urea-scaffold inhibitor
6 [3-(3-(4-Bromophenyl)ureido)benzoic acid]
Authors : Schnell, R.; Maric, S.; Schneider, G.
Deposited on : 2016-02-17
Resolution : 2.57 Å(reported)

This is a Full wwPDB X-ray Structure Validation Report for a publicly released PDB entry.

We welcome your comments at validation@mail.wwpdb.org

A user guide is available at

<https://www.wwpdb.org/validation/2017/XrayValidationReportHelp>

with specific help available everywhere you see the ⓘ symbol.

The types of validation reports are described at

<http://www.wwpdb.org/validation/2017/FAQs#types>.

The following versions of software and data (see [references ⓘ](#)) were used in the production of this report:

MolProbity	:	4.02b-467
Mogul	:	1.8.5 (274361), CSD as541be (2020)
Xtriage (Phenix)	:	1.13
EDS	:	2.37.1
buster-report	:	1.1.7 (2018)
Percentile statistics	:	20191225.v01 (using entries in the PDB archive December 25th 2019)
Refmac	:	5.8.0158
CCP4	:	7.0.044 (Gargrove)
Ideal geometry (proteins)	:	Engh & Huber (2001)
Ideal geometry (DNA, RNA)	:	Parkinson et al. (1996)
Validation Pipeline (wwPDB-VP)	:	2.37.1

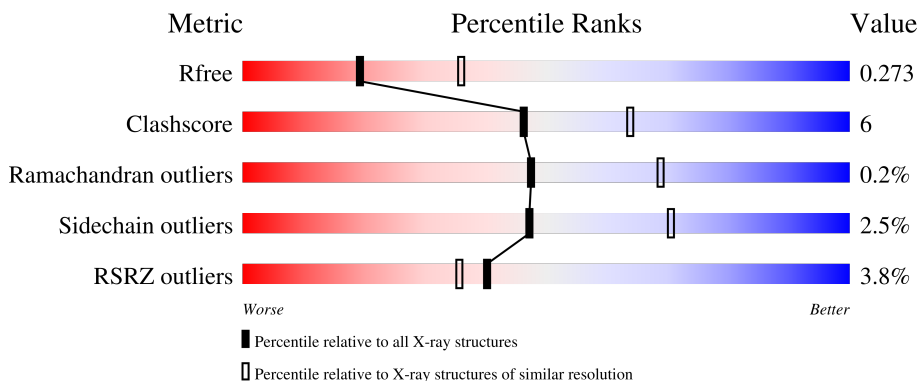
1 Overall quality at a glance

The following experimental techniques were used to determine the structure:

X-RAY DIFFRACTION

The reported resolution of this entry is 2.57 Å.

Percentile scores (ranging between 0-100) for global validation metrics of the entry are shown in the following graphic. The table shows the number of entries on which the scores are based.



Metric	Whole archive (#Entries)	Similar resolution (#Entries, resolution range(Å))
R_{free}	130704	3676 (2.60-2.56)
Clashscore	141614	4049 (2.60-2.56)
Ramachandran outliers	138981	3979 (2.60-2.56)
Sidechain outliers	138945	3979 (2.60-2.56)
RSRZ outliers	127900	3614 (2.60-2.56)

The table below summarises the geometric issues observed across the polymeric chains and their fit to the electron density. The red, orange, yellow and green segments of the lower bar indicate the fraction of residues that contain outliers for ≥ 3 , 2, 1 and 0 types of geometric quality criteria respectively. A grey segment represents the fraction of residues that are not modelled. The numeric value for each fraction is indicated below the corresponding segment, with a dot representing fractions $\leq 5\%$. The upper red bar (where present) indicates the fraction of residues that have poor fit to the electron density. The numeric value is given above the bar.

Mol	Chain	Length	Quality of chain
1	A	326	 2% 75% 11% 14%
1	B	326	 % 75% 14% 11%
1	C	326	 9% 73% 13% 13%
1	D	326	 2% 78% 14% 7%

2 Entry composition

There are 5 unique types of molecules in this entry. The entry contains 9115 atoms, of which 0 are hydrogens and 0 are deuteriums.

In the tables below, the ZeroOcc column contains the number of atoms modelled with zero occupancy, the AltConf column contains the number of residues with at least one atom in alternate conformation and the Trace column contains the number of residues modelled with at most 2 atoms.

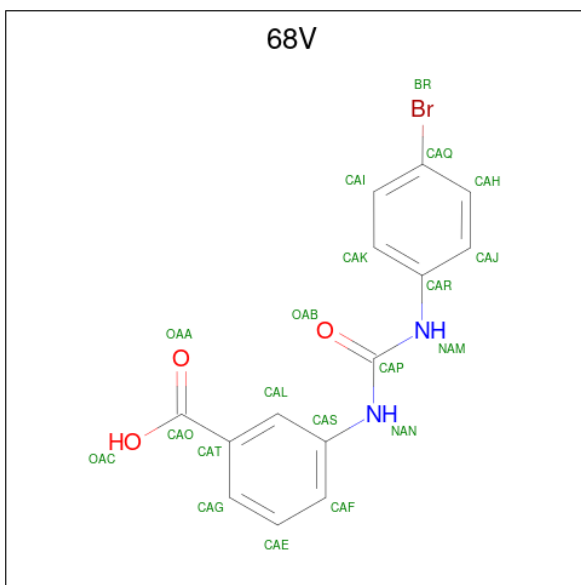
- Molecule 1 is a protein called O-phosphoserine sulfhydrylase.

Mol	Chain	Residues	Atoms					ZeroOcc	AltConf	Trace
1	A	280	Total	C	N	O	S	0	0	0
			2112	1331	379	395	7			
1	B	291	Total	C	N	O	S	0	0	0
			2176	1369	388	412	7			
1	C	284	Total	C	N	O	S	0	0	0
			2130	1339	381	403	7			
1	D	304	Total	C	N	O	S	0	0	0
			2293	1445	407	433	8			

There are 16 discrepancies between the modelled and reference sequences:

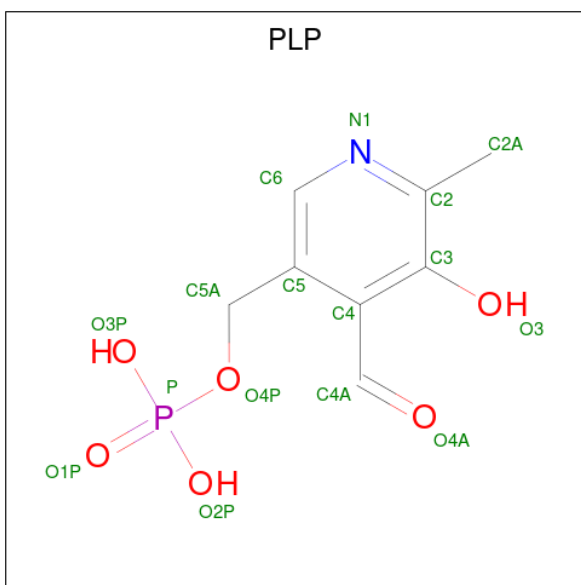
Chain	Residue	Modelled	Actual	Comment	Reference
A	-2	GLY	-	expression tag	UNP P9WP53
A	-1	SER	-	expression tag	UNP P9WP53
A	0	HIS	-	expression tag	UNP P9WP53
A	2	ALA	THR	engineered mutation	UNP P9WP53
B	-2	GLY	-	expression tag	UNP P9WP53
B	-1	SER	-	expression tag	UNP P9WP53
B	0	HIS	-	expression tag	UNP P9WP53
B	2	ALA	THR	engineered mutation	UNP P9WP53
C	-2	GLY	-	expression tag	UNP P9WP53
C	-1	SER	-	expression tag	UNP P9WP53
C	0	HIS	-	expression tag	UNP P9WP53
C	2	ALA	THR	engineered mutation	UNP P9WP53
D	-2	GLY	-	expression tag	UNP P9WP53
D	-1	SER	-	expression tag	UNP P9WP53
D	0	HIS	-	expression tag	UNP P9WP53
D	2	ALA	THR	engineered mutation	UNP P9WP53

- Molecule 2 is 3-[[4-bromophenyl]carbamoyl]amino}benzoic acid (three-letter code: 68V) (formula: C₁₄H₁₁BrN₂O₃).



Mol	Chain	Residues	Atoms					ZeroOcc	AltConf
2	A	1	Total	Br	C	N	O	0	0
			20	1	14	2	3		
2	B	1	Total	Br	C	N	O	0	0
			20	1	14	2	3		
2	C	1	Total	Br	C	N	O	0	0
			20	1	14	2	3		
2	D	1	Total	Br	C	N	O	0	0
			20	1	14	2	3		

- Molecule 3 is PYRIDOXAL-5'-PHOSPHATE (three-letter code: PLP) (formula: $C_8H_{10}NO_6P$).



Mol	Chain	Residues	Atoms					ZeroOcc	AltConf
3	A	1	Total	C	N	O	P	0	0
			15	8	1	5	1		
3	B	1	Total	C	N	O	P	0	0
			15	8	1	5	1		
3	C	1	Total	C	N	O	P	0	0
			15	8	1	5	1		
3	D	1	Total	C	N	O	P	0	0
			15	8	1	5	1		

- Molecule 4 is CHLORIDE ION (three-letter code: CL) (formula: Cl).

Mol	Chain	Residues	Atoms		ZeroOcc	AltConf
4	D	1	Total	Cl	0	0
			1	1		

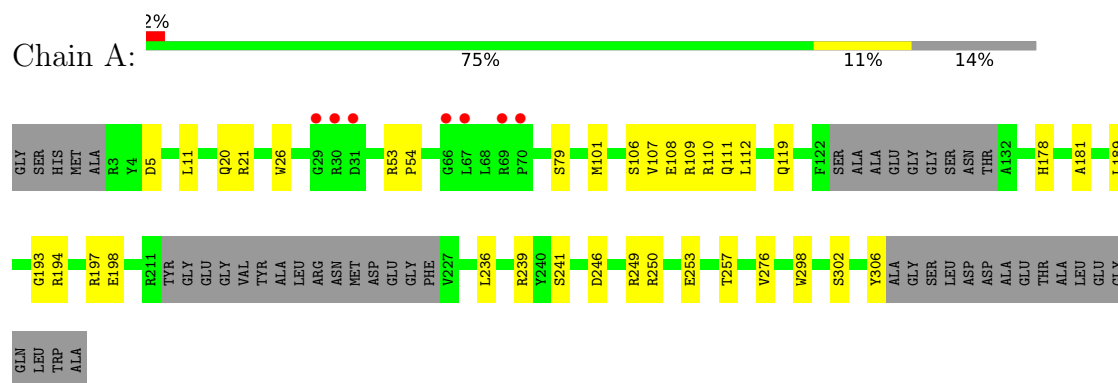
- Molecule 5 is water.

Mol	Chain	Residues	Atoms		ZeroOcc	AltConf
5	A	70	Total	O	0	0
			70	70		
5	B	67	Total	O	0	0
			67	67		
5	C	53	Total	O	0	0
			53	53		
5	D	73	Total	O	0	0
			73	73		

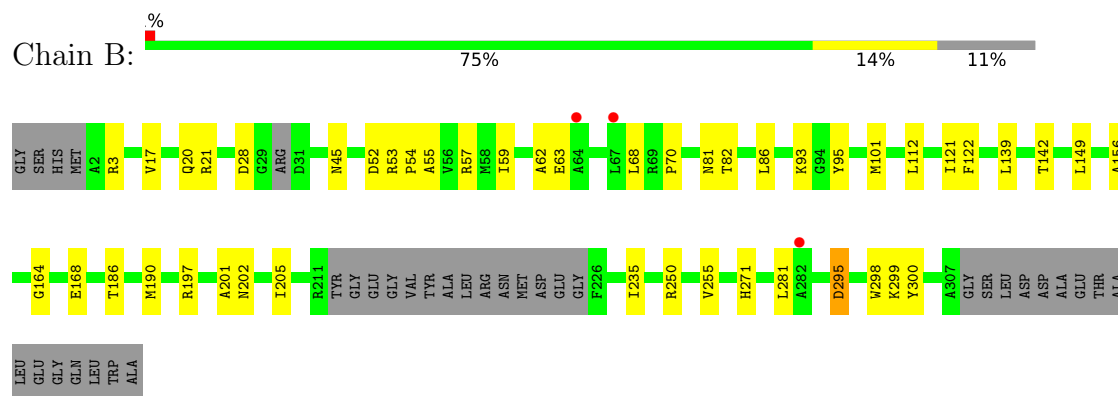
3 Residue-property plots [i](#)

These plots are drawn for all protein, RNA, DNA and oligosaccharide chains in the entry. The first graphic for a chain summarises the proportions of the various outlier classes displayed in the second graphic. The second graphic shows the sequence view annotated by issues in geometry and electron density. Residues are color-coded according to the number of geometric quality criteria for which they contain at least one outlier: green = 0, yellow = 1, orange = 2 and red = 3 or more. A red dot above a residue indicates a poor fit to the electron density ($RSRZ > 2$). Stretches of 2 or more consecutive residues without any outlier are shown as a green connector. Residues present in the sample, but not in the model, are shown in grey.

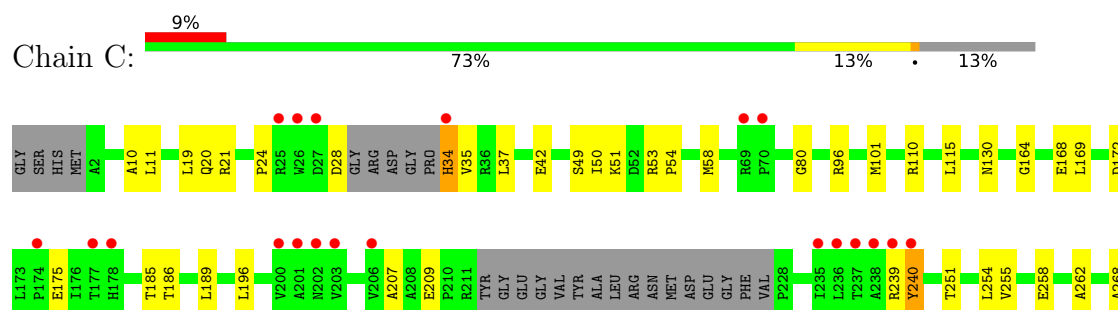
- Molecule 1: O-phosphoserine sulfhydrylase

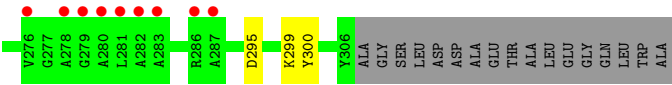


- Molecule 1: O-phosphoserine sulfhydrylase

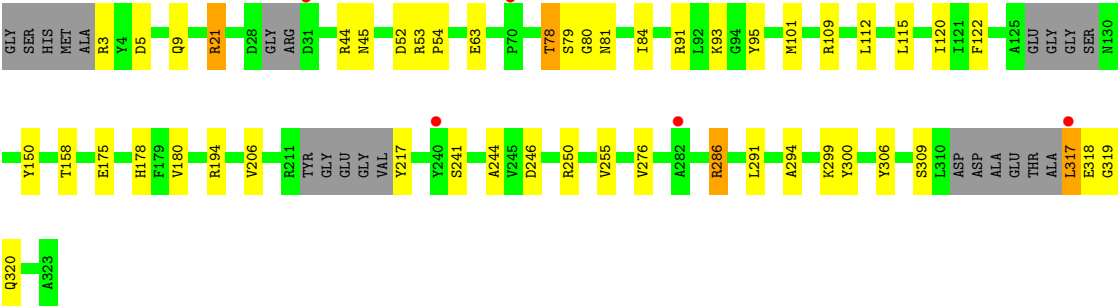
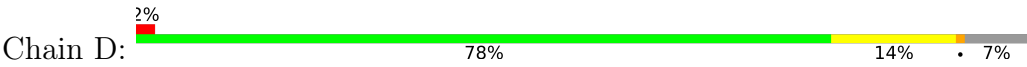


- Molecule 1: O-phosphoserine sulfhydrylase





● Molecule 1: O-phosphoserine sulfhydrylase



4 Data and refinement statistics

Property	Value	Source
Space group	P 1	Depositor
Cell constants a, b, c, α , β , γ	64.59Å 76.09Å 80.72Å 94.33° 108.32° 107.66°	Depositor
Resolution (Å)	75.25 – 2.57 49.16 – 2.57	Depositor EDS
% Data completeness (in resolution range)	98.3 (75.25-2.57) 97.8 (49.16-2.57)	Depositor EDS
R_{merge}	0.16	Depositor
R_{sym}	(Not available)	Depositor
$\langle I/\sigma(I) \rangle$ ¹	1.75 (at 2.58Å)	Xtriage
Refinement program	REFMAC 5.8.0049	Depositor
R, R_{free}	0.201 , 0.265 0.208 , 0.273	Depositor DCC
R_{free} test set	2177 reflections (5.09%)	wwPDB-VP
Wilson B-factor (Å ²)	31.7	Xtriage
Anisotropy	0.507	Xtriage
Bulk solvent k_{sol} (e/Å ³), B_{sol} (Å ²)	0.39 , 48.5	EDS
L-test for twinning ²	$\langle L \rangle = 0.47$, $\langle L^2 \rangle = 0.30$	Xtriage
Estimated twinning fraction	No twinning to report.	Xtriage
F_o, F_c correlation	0.92	EDS
Total number of atoms	9115	wwPDB-VP
Average B, all atoms (Å ²)	32.0	wwPDB-VP

Xtriage's analysis on translational NCS is as follows: *The largest off-origin peak in the Patterson function is 8.09% of the height of the origin peak. No significant pseudotranslation is detected.*

¹Intensities estimated from amplitudes.

²Theoretical values of $\langle |L| \rangle$, $\langle L^2 \rangle$ for acentric reflections are 0.5, 0.333 respectively for untwinned datasets, and 0.375, 0.2 for perfectly twinned datasets.

5 Model quality [i](#)

5.1 Standard geometry [i](#)

Bond lengths and bond angles in the following residue types are not validated in this section: CL, PLP, 68V

The Z score for a bond length (or angle) is the number of standard deviations the observed value is removed from the expected value. A bond length (or angle) with $|Z| > 5$ is considered an outlier worth inspection. RMSZ is the root-mean-square of all Z scores of the bond lengths (or angles).

Mol	Chain	Bond lengths		Bond angles	
		RMSZ	# Z >5	RMSZ	# Z >5
1	A	0.58	0/2152	0.73	1/2928 (0.0%)
1	B	0.57	0/2217	0.77	1/3017 (0.0%)
1	C	0.50	0/2169	0.70	0/2950
1	D	0.56	0/2335	0.76	0/3173
All	All	0.55	0/8873	0.74	2/12068 (0.0%)

There are no bond length outliers.

All (2) bond angle outliers are listed below:

Mol	Chain	Res	Type	Atoms	Z	Observed(°)	Ideal(°)
1	B	295	ASP	CB-CG-OD1	5.26	123.04	118.30
1	A	11	LEU	CA-CB-CG	5.15	127.15	115.30

There are no chirality outliers.

There are no planarity outliers.

5.2 Too-close contacts [i](#)

In the following table, the Non-H and H(model) columns list the number of non-hydrogen atoms and hydrogen atoms in the chain respectively. The H(added) column lists the number of hydrogen atoms added and optimized by MolProbity. The Clashes column lists the number of clashes within the asymmetric unit, whereas Symm-Clashes lists symmetry-related clashes.

Mol	Chain	Non-H	H(model)	H(added)	Clashes	Symm-Clashes
1	A	2112	0	2117	24	0
1	B	2176	0	2168	29	0
1	C	2130	0	2129	33	0
1	D	2293	0	2280	32	0
2	A	20	0	0	0	0

Continued on next page...

Continued from previous page...

Mol	Chain	Non-H	H(model)	H(added)	Clashes	Symm-Clashes
2	B	20	0	0	0	0
2	C	20	0	0	2	0
2	D	20	0	0	1	0
3	A	15	0	6	0	0
3	B	15	0	6	1	0
3	C	15	0	6	1	0
3	D	15	0	6	2	0
4	D	1	0	0	0	0
5	A	70	0	0	3	0
5	B	67	0	0	0	0
5	C	53	0	0	3	0
5	D	73	0	0	4	0
All	All	9115	0	8718	110	0

The all-atom clashscore is defined as the number of clashes found per 1000 atoms (including hydrogen atoms). The all-atom clashscore for this structure is 6.

All (110) close contacts within the same asymmetric unit are listed below, sorted by their clash magnitude.

Atom-1	Atom-2	Interatomic distance (Å)	Clash overlap (Å)
1:C:168:GLU:O	1:C:172:ASP:OD1	1.78	1.01
1:D:21:ARG:NH1	5:D:501:HOH:O	2.00	0.93
1:B:197:ARG:NH1	1:B:235:ILE:O	2.20	0.75
1:A:5:ASP:HB3	1:B:20:GLN:HE21	1.51	0.74
1:A:306:TYR:O	5:A:501:HOH:O	2.10	0.69
1:C:268:ALA:HB1	2:C:401:68V:BR	2.51	0.65
1:C:54:PRO:O	1:C:58:MET:HG3	1.96	0.64
1:C:175:GLU:OE2	1:D:3:ARG:NH2	2.30	0.64
1:D:244:ALA:HB1	1:D:317:LEU:HD21	1.80	0.63
1:C:268:ALA:CB	2:C:401:68V:BR	3.01	0.63
1:C:110:ARG:HD3	5:C:511:HOH:O	1.99	0.62
1:C:115:LEU:HD11	1:D:255:VAL:HG11	1.82	0.61
1:D:319:GLY:O	1:D:320:GLN:HB2	2.01	0.61
1:B:81:ASN:OD1	1:B:299:LYS:NZ	2.24	0.61
1:A:110:ARG:HB2	5:A:549:HOH:O	2.01	0.60
1:D:299:LYS:NZ	5:D:503:HOH:O	2.32	0.60
1:A:112:LEU:HD11	1:B:298:TRP:CH2	2.38	0.59
1:B:295:ASP:OD2	1:B:300:TYR:OH	2.20	0.59
1:A:298:TRP:CZ3	1:B:112:LEU:HD11	2.39	0.58
1:A:21:ARG:NE	1:A:257:THR:O	2.37	0.57
1:A:246:ASP:OD1	1:A:249:ARG:NH1	2.37	0.57

Continued on next page...

Continued from previous page...

Atom-1	Atom-2	Interatomic distance (Å)	Clash overlap (Å)
1:B:139:LEU:O	1:B:142:THR:O	2.21	0.57
1:C:185:THR:O	1:C:186:THR:OG1	2.22	0.56
1:B:250:ARG:HG3	1:B:271:HIS:HB2	1.87	0.56
1:B:62:ALA:HB3	1:B:68:LEU:HD12	1.88	0.55
1:C:209:GLU:CD	1:C:239:ARG:HH21	2.10	0.55
1:B:164:GLY:O	1:B:168:GLU:HG3	2.07	0.55
1:B:81:ASN:ND2	3:B:402:PLP:H2A1	2.21	0.55
1:D:63:GLU:OE2	1:D:95:TYR:OH	2.17	0.55
1:A:250:ARG:NH2	1:A:253:GLU:OE1	2.38	0.54
1:C:53:ARG:HB2	1:C:54:PRO:HD3	1.90	0.54
1:B:59:ILE:HD13	1:B:149:LEU:HD11	1.89	0.53
1:B:101:MET:O	1:B:122:PHE:HA	2.09	0.52
1:A:79:SER:O	1:A:109:ARG:NH1	2.41	0.52
1:C:53:ARG:HB2	1:C:54:PRO:CD	2.39	0.52
1:D:112:LEU:HD12	1:D:115:LEU:HD23	1.92	0.52
1:A:5:ASP:HB3	1:B:20:GLN:NE2	2.21	0.52
1:C:19:LEU:HD12	1:C:37:LEU:HB3	1.92	0.52
1:A:106:SER:HA	5:A:530:HOH:O	2.11	0.51
1:B:53:ARG:HB2	1:B:54:PRO:CD	2.40	0.51
1:B:53:ARG:HB2	1:B:54:PRO:HD3	1.93	0.50
1:A:181:ALA:HB3	1:A:189:LEU:HD21	1.92	0.50
1:D:217:TYR:CE1	1:D:318:GLU:HG2	2.47	0.50
1:A:107:VAL:O	1:A:111:GLN:HG3	2.12	0.50
1:C:240:TYR:N	1:C:240:TYR:CD2	2.79	0.50
1:A:181:ALA:HB3	1:A:189:LEU:CD2	2.42	0.50
1:B:82:THR:HG22	1:B:86:LEU:HD12	1.94	0.49
1:C:175:GLU:OE1	1:C:175:GLU:N	2.40	0.49
1:A:194:ARG:O	1:A:198:GLU:HG3	2.12	0.49
1:C:240:TYR:N	1:C:240:TYR:HD2	2.11	0.49
1:D:53:ARG:HB2	1:D:54:PRO:HD3	1.94	0.49
1:C:51:LYS:HA	1:C:54:PRO:HD2	1.95	0.49
1:C:24:PRO:HD2	1:C:37:LEU:HD13	1.94	0.49
1:A:53:ARG:HB2	1:A:54:PRO:CD	2.43	0.49
1:A:112:LEU:CD1	1:B:298:TRP:CH2	2.96	0.48
1:A:178:HIS:CD2	1:A:276:VAL:HG11	2.48	0.48
1:C:254:LEU:HD23	1:C:262:ALA:HB3	1.96	0.47
1:C:80:GLY:HA2	1:C:101:MET:CE	2.44	0.47
1:C:80:GLY:HA2	1:C:101:MET:HE1	1.96	0.47
1:C:96:ARG:NH1	5:C:503:HOH:O	2.47	0.47
1:D:63:GLU:OE1	1:D:93:LYS:NZ	2.47	0.47
1:D:45:ASN:HB3	1:D:52:ASP:OD2	2.15	0.47

Continued on next page...

Continued from previous page...

Atom-1	Atom-2	Interatomic distance (Å)	Clash overlap (Å)
1:D:109:ARG:NH2	1:D:300:TYR:OH	2.49	0.46
1:D:120:ILE:HG21	1:D:122:PHE:CZ	2.50	0.46
1:B:63:GLU:OE2	1:B:93:LYS:HD3	2.17	0.45
1:D:78:THR:O	1:D:101:MET:HG2	2.16	0.45
1:D:246:ASP:O	1:D:250:ARG:HG2	2.17	0.45
1:C:51:LYS:NZ	3:C:402:PLP:O3	2.50	0.45
1:C:189:LEU:HD13	1:C:207:ALA:HB2	1.99	0.45
1:C:295:ASP:OD2	1:C:300:TYR:OH	2.24	0.45
1:D:5:ASP:N	1:D:9:GLN:OE1	2.42	0.45
1:B:186:THR:O	1:B:190:MET:HG2	2.17	0.45
1:B:197:ARG:NH1	1:B:205:ILE:HG12	2.32	0.45
1:B:70:PRO:HA	1:B:95:TYR:CE1	2.52	0.44
1:D:81:ASN:ND2	3:D:403:PLP:H2A1	2.32	0.44
1:A:106:SER:OG	1:A:109:ARG:HG3	2.17	0.44
1:A:108:GLU:OE1	1:A:302:SER:OG	2.33	0.44
1:D:294:ALA:HB3	3:D:403:PLP:H2A2	2.00	0.44
1:B:57:ARG:HG2	1:B:156:ALA:HB1	2.00	0.44
1:C:299:LYS:NZ	5:C:502:HOH:O	2.43	0.44
1:D:80:GLY:O	1:D:84:ILE:HD12	2.17	0.44
1:C:20:GLN:NE2	1:D:5:ASP:HB3	2.32	0.43
1:C:19:LEU:HB3	1:C:258:GLU:OE2	2.19	0.43
1:B:201:ALA:O	1:B:202:ASN:CB	2.67	0.43
1:C:24:PRO:HB2	1:C:35:VAL:HB	2.00	0.43
1:D:79:SER:O	1:D:109:ARG:NH1	2.45	0.43
1:D:3:ARG:N	5:D:509:HOH:O	2.51	0.43
1:C:42:GLU:HG3	1:C:50:ILE:HD12	2.01	0.42
1:D:180:VAL:HG22	1:D:206:VAL:HB	2.01	0.42
1:A:20:GLN:HG2	1:A:26:TRP:CE2	2.55	0.42
1:C:10:ALA:O	1:D:44:ARG:NH2	2.53	0.42
2:D:401:68V:OAB	2:D:401:68V:CAF	2.66	0.42
1:B:70:PRO:HA	1:B:95:TYR:CD1	2.54	0.42
1:B:121:ILE:HD12	1:B:121:ILE:N	2.35	0.42
1:A:236:LEU:HD13	1:A:239:ARG:HG2	2.01	0.42
1:B:55:ALA:O	1:B:59:ILE:HG12	2.20	0.42
1:D:53:ARG:HB2	1:D:54:PRO:CD	2.50	0.42
1:D:180:VAL:O	1:D:291:LEU:HA	2.20	0.41
1:C:251:THR:O	1:C:255:VAL:HG23	2.20	0.41
1:C:169:LEU:HD23	1:C:196:LEU:HD11	2.02	0.41
1:B:201:ALA:O	1:B:202:ASN:HB3	2.21	0.41
1:B:45:ASN:HB3	1:B:52:ASP:OD2	2.21	0.41
1:D:158:THR:HG21	1:D:194:ARG:HH21	1.86	0.41

Continued on next page...

Continued from previous page...

Atom-1	Atom-2	Interatomic distance (Å)	Clash overlap (Å)
1:D:175:GLU:O	1:D:286:ARG:NH2	2.54	0.41
1:D:178:HIS:CD2	1:D:276:VAL:HG11	2.56	0.41
1:A:193:GLY:O	1:A:197:ARG:HG3	2.20	0.40
1:A:246:ASP:O	1:A:250:ARG:HG2	2.22	0.40
1:D:300:TYR:HB2	1:D:306:TYR:CE1	2.55	0.40
1:D:299:LYS:HE2	5:D:529:HOH:O	2.21	0.40
1:C:28:ASP:OD1	1:C:34:HIS:CD2	2.75	0.40

There are no symmetry-related clashes.

5.3 Torsion angles [i](#)

5.3.1 Protein backbone [i](#)

In the following table, the Percentiles column shows the percent Ramachandran outliers of the chain as a percentile score with respect to all X-ray entries followed by that with respect to entries of similar resolution.

The Analysed column shows the number of residues for which the backbone conformation was analysed, and the total number of residues.

Mol	Chain	Analysed	Favoured	Allowed	Outliers	Percentiles	
1	A	274/326 (84%)	262 (96%)	12 (4%)	0	100	100
1	B	285/326 (87%)	274 (96%)	11 (4%)	0	100	100
1	C	278/326 (85%)	261 (94%)	16 (6%)	1 (0%)	34	55
1	D	294/326 (90%)	280 (95%)	13 (4%)	1 (0%)	41	62
All	All	1131/1304 (87%)	1077 (95%)	52 (5%)	2 (0%)	47	69

All (2) Ramachandran outliers are listed below:

Mol	Chain	Res	Type
1	D	150	TYR
1	C	164	GLY

5.3.2 Protein sidechains [i](#)

In the following table, the Percentiles column shows the percent sidechain outliers of the chain as a percentile score with respect to all X-ray entries followed by that with respect to entries of similar resolution.

The Analysed column shows the number of residues for which the sidechain conformation was analysed, and the total number of residues.

Mol	Chain	Analysed	Rotameric	Outliers	Percentiles	
1	A	214/244 (88%)	211 (99%)	3 (1%)	67	84
1	B	219/244 (90%)	213 (97%)	6 (3%)	44	68
1	C	215/244 (88%)	209 (97%)	6 (3%)	43	67
1	D	231/244 (95%)	224 (97%)	7 (3%)	41	65
All	All	879/976 (90%)	857 (98%)	22 (2%)	47	70

All (22) residues with a non-rotameric sidechain are listed below:

Mol	Chain	Res	Type
1	A	101	MET
1	A	119	GLN
1	A	241	SER
1	B	3	ARG
1	B	17	VAL
1	B	21	ARG
1	B	28	ASP
1	B	255	VAL
1	B	281	LEU
1	C	11	LEU
1	C	21	ARG
1	C	34	HIS
1	C	49	SER
1	C	130	ASN
1	C	240	TYR
1	D	21	ARG
1	D	78	THR
1	D	91	ARG
1	D	241	SER
1	D	286	ARG
1	D	309	SER
1	D	317	LEU

Sometimes sidechains can be flipped to improve hydrogen bonding and reduce clashes. All (3) such sidechains are listed below:

Mol	Chain	Res	Type
1	B	20	GLN
1	D	20	GLN
1	D	320	GLN

5.3.3 RNA ⓘ

There are no RNA molecules in this entry.

5.4 Non-standard residues in protein, DNA, RNA chains ⓘ

There are no non-standard protein/DNA/RNA residues in this entry.

5.5 Carbohydrates ⓘ

There are no monosaccharides in this entry.

5.6 Ligand geometry ⓘ

Of 9 ligands modelled in this entry, 1 is monoatomic - leaving 8 for Mogul analysis.

In the following table, the Counts columns list the number of bonds (or angles) for which Mogul statistics could be retrieved, the number of bonds (or angles) that are observed in the model and the number of bonds (or angles) that are defined in the Chemical Component Dictionary. The Link column lists molecule types, if any, to which the group is linked. The Z score for a bond length (or angle) is the number of standard deviations the observed value is removed from the expected value. A bond length (or angle) with $|Z| > 2$ is considered an outlier worth inspection. RMSZ is the root-mean-square of all Z scores of the bond lengths (or angles).

Mol	Type	Chain	Res	Link	Bond lengths			Bond angles		
					Counts	RMSZ	# $ Z > 2$	Counts	RMSZ	# $ Z > 2$
3	PLP	D	403	1	15,15,16	2.52	3 (20%)	20,22,23	1.55	3 (15%)
2	68V	C	401	-	21,21,21	1.49	3 (14%)	28,28,28	1.14	1 (3%)
2	68V	D	401	-	21,21,21	1.82	3 (14%)	28,28,28	1.35	5 (17%)
2	68V	B	401	-	21,21,21	1.61	4 (19%)	28,28,28	1.12	1 (3%)
3	PLP	B	402	1	15,15,16	2.44	3 (20%)	20,22,23	1.57	3 (15%)
3	PLP	C	402	1	15,15,16	2.30	3 (20%)	20,22,23	1.16	1 (5%)
2	68V	A	401	-	21,21,21	1.62	4 (19%)	28,28,28	1.10	2 (7%)
3	PLP	A	402	1	15,15,16	2.82	3 (20%)	20,22,23	1.37	2 (10%)

In the following table, the Chirals column lists the number of chiral outliers, the number of chiral centers analysed, the number of these observed in the model and the number defined in the Chemical Component Dictionary. Similar counts are reported in the Torsion and Rings columns. '-' means no outliers of that kind were identified.

Mol	Type	Chain	Res	Link	Chirals	Torsions	Rings
3	PLP	D	403	1	-	0/6/6/8	0/1/1/1
2	68V	C	401	-	-	6/12/12/12	0/2/2/2
2	68V	D	401	-	-	2/12/12/12	0/2/2/2
2	68V	B	401	-	-	0/12/12/12	0/2/2/2
3	PLP	B	402	1	-	0/6/6/8	0/1/1/1
3	PLP	C	402	1	-	3/6/6/8	0/1/1/1
2	68V	A	401	-	-	0/12/12/12	0/2/2/2
3	PLP	A	402	1	-	0/6/6/8	0/1/1/1

All (26) bond length outliers are listed below:

Mol	Chain	Res	Type	Atoms	Z	Observed(Å)	Ideal(Å)
3	A	402	PLP	C3-C2	7.09	1.48	1.40
3	A	402	PLP	C5-C4	7.08	1.48	1.40
3	B	402	PLP	C5-C4	6.60	1.47	1.40
3	D	403	PLP	C3-C2	6.49	1.47	1.40
3	C	402	PLP	C5-C4	5.97	1.47	1.40
3	D	403	PLP	C5-C4	5.86	1.47	1.40
3	B	402	PLP	C3-C2	5.67	1.46	1.40
3	C	402	PLP	C3-C2	5.02	1.45	1.40
2	D	401	68V	CAS-NAN	-4.82	1.31	1.41
2	D	401	68V	CAR-NAM	-4.29	1.33	1.41
2	B	401	68V	CAT-CAO	-4.21	1.40	1.49
2	A	401	68V	CAT-CAO	-4.13	1.40	1.49
2	C	401	68V	CAR-NAM	-4.03	1.33	1.41
2	A	401	68V	CAR-NAM	-3.99	1.33	1.41
2	D	401	68V	CAT-CAO	-3.93	1.41	1.49
3	D	403	PLP	C3-C4	3.82	1.48	1.40
3	A	402	PLP	C3-C4	3.31	1.47	1.40
2	C	401	68V	CAT-CAO	-3.14	1.42	1.49
2	B	401	68V	CAR-NAM	-3.13	1.35	1.41
3	C	402	PLP	C3-C4	3.04	1.46	1.40
3	B	402	PLP	C3-C4	3.03	1.46	1.40
2	B	401	68V	CAS-NAN	-2.80	1.36	1.41
2	A	401	68V	CAS-NAN	-2.74	1.36	1.41
2	C	401	68V	CAS-NAN	-2.69	1.36	1.41
2	B	401	68V	BR-CAQ	2.57	1.95	1.90
2	A	401	68V	BR-CAQ	2.20	1.94	1.90

All (18) bond angle outliers are listed below:

Mol	Chain	Res	Type	Atoms	Z	Observed(°)	Ideal(°)
3	B	402	PLP	O4P-P-O1P	-3.37	97.02	106.47
3	D	403	PLP	O2P-P-O4P	-3.20	98.21	106.73
3	B	402	PLP	O4P-C5A-C5	3.17	115.39	109.35
2	C	401	68V	OAC-CAO-OAA	-2.71	117.32	123.35
2	D	401	68V	OAC-CAO-CAT	2.63	121.68	114.85
2	D	401	68V	BR-CAQ-CAI	2.50	122.94	119.30
3	D	403	PLP	O3P-P-O2P	2.50	117.18	107.64
2	A	401	68V	CAF-CAS-CAL	-2.45	116.75	119.65
3	B	402	PLP	C6-N1-C2	2.38	123.58	119.17
3	A	402	PLP	O3-C3-C2	2.32	122.55	117.49
2	D	401	68V	OAC-CAO-OAA	-2.30	118.24	123.35
3	D	403	PLP	C4A-C4-C3	2.27	124.35	120.50
3	C	402	PLP	C6-N1-C2	2.16	123.17	119.17
2	D	401	68V	CAJ-CAR-NAM	-2.14	113.21	120.40
2	A	401	68V	OAC-CAO-OAA	-2.13	118.62	123.35
2	D	401	68V	CAR-NAM-CAP	-2.12	122.27	126.61
2	B	401	68V	OAC-CAO-CAT	2.05	120.17	114.85
3	A	402	PLP	C4A-C4-C5	-2.01	118.86	120.94

There are no chirality outliers.

All (11) torsion outliers are listed below:

Mol	Chain	Res	Type	Atoms
3	C	402	PLP	C4-C5-C5A-O4P
3	C	402	PLP	C6-C5-C5A-O4P
2	C	401	68V	OAC-CAO-CAT-CAL
2	C	401	68V	OAC-CAO-CAT-CAG
2	C	401	68V	OAA-CAO-CAT-CAL
2	C	401	68V	CAK-CAR-NAM-CAP
2	C	401	68V	CAJ-CAR-NAM-CAP
2	C	401	68V	OAA-CAO-CAT-CAG
3	C	402	PLP	C5A-O4P-P-O2P
2	D	401	68V	CAJ-CAR-NAM-CAP
2	D	401	68V	CAK-CAR-NAM-CAP

There are no ring outliers.

5 monomers are involved in 7 short contacts:

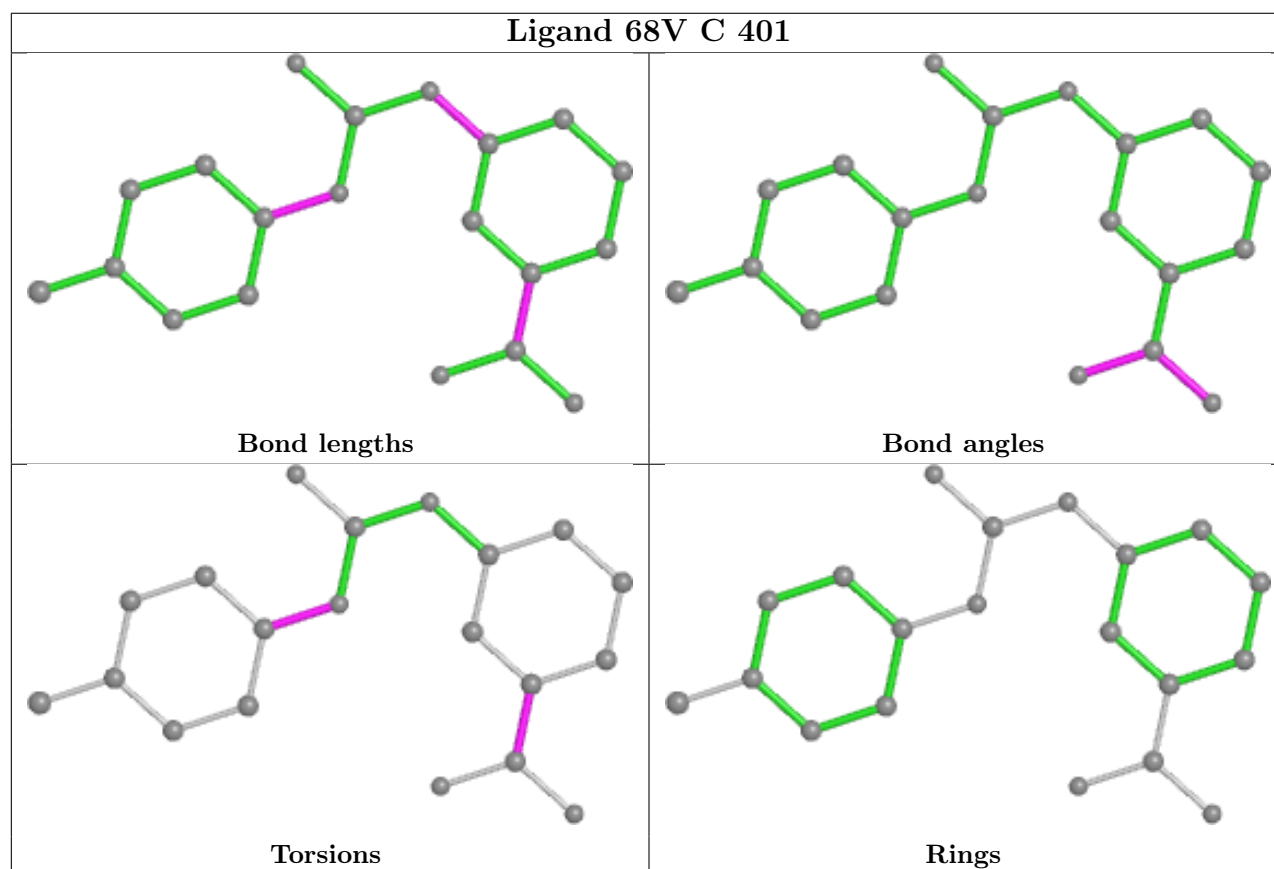
Mol	Chain	Res	Type	Clashes	Symm-Clashes
3	D	403	PLP	2	0
2	C	401	68V	2	0
2	D	401	68V	1	0

Continued on next page...

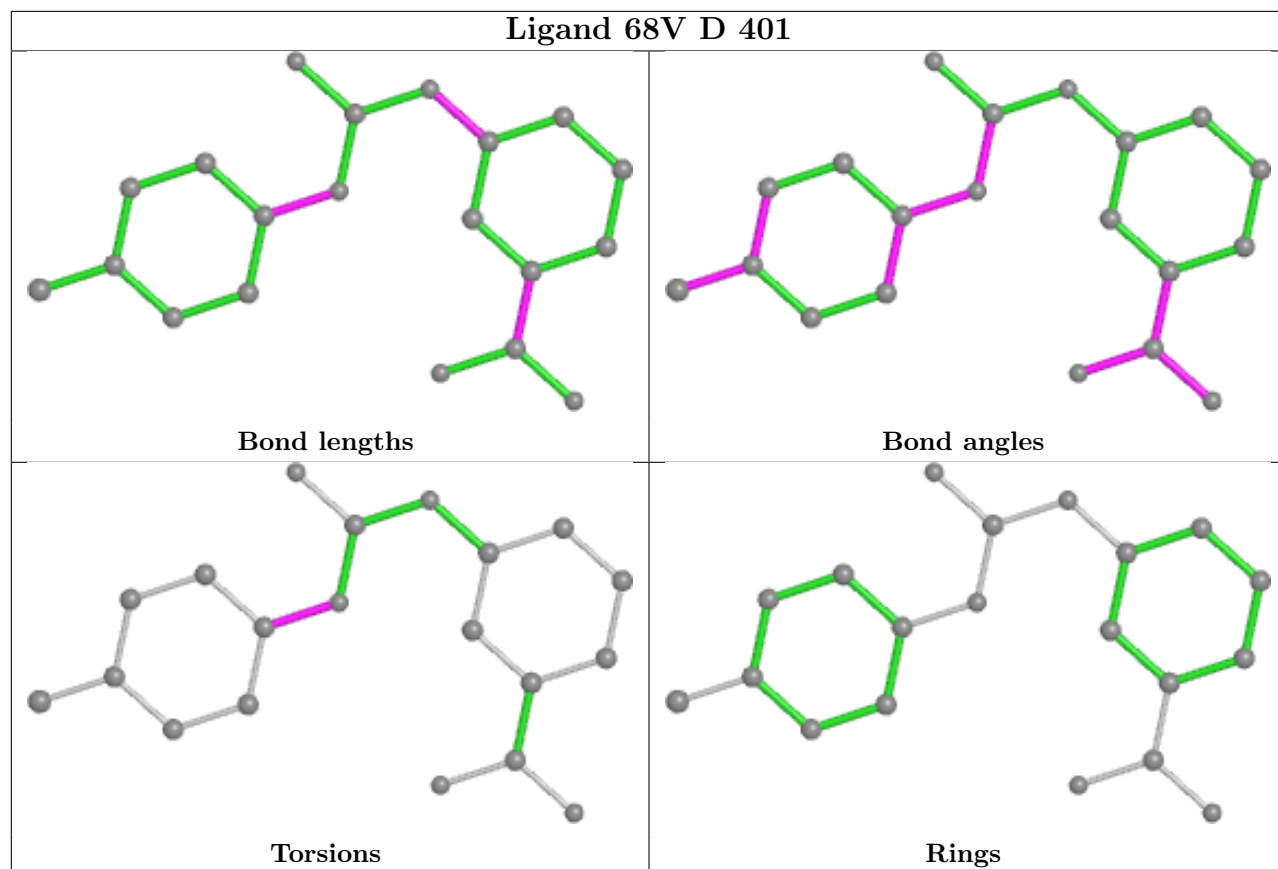
Continued from previous page...

Mol	Chain	Res	Type	Clashes	Symm-Clashes
3	B	402	PLP	1	0
3	C	402	PLP	1	0

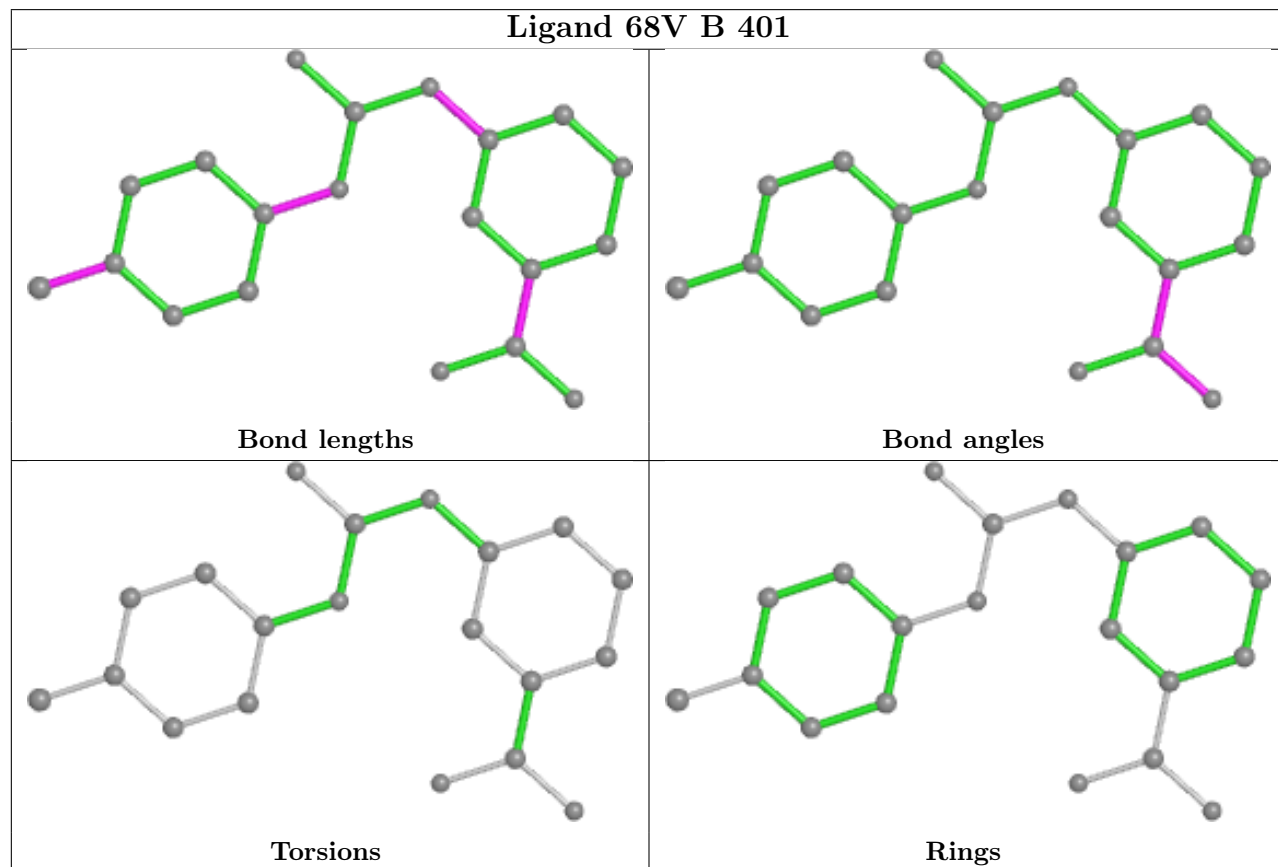
The following is a two-dimensional graphical depiction of Mogul quality analysis of bond lengths, bond angles, torsion angles, and ring geometry for all instances of the Ligand of Interest. In addition, ligands with molecular weight > 250 and outliers as shown on the validation Tables will also be included. For torsion angles, if less than 5% of the Mogul distribution of torsion angles is within 10 degrees of the torsion angle in question, then that torsion angle is considered an outlier. Any bond that is central to one or more torsion angles identified as an outlier by Mogul will be highlighted in the graph. For rings, the root-mean-square deviation (RMSD) between the ring in question and similar rings identified by Mogul is calculated over all ring torsion angles. If the average RMSD is greater than 60 degrees and the minimal RMSD between the ring in question and any Mogul-identified rings is also greater than 60 degrees, then that ring is considered an outlier. The outliers are highlighted in purple. The color gray indicates Mogul did not find sufficient equivalents in the CSD to analyse the geometry.

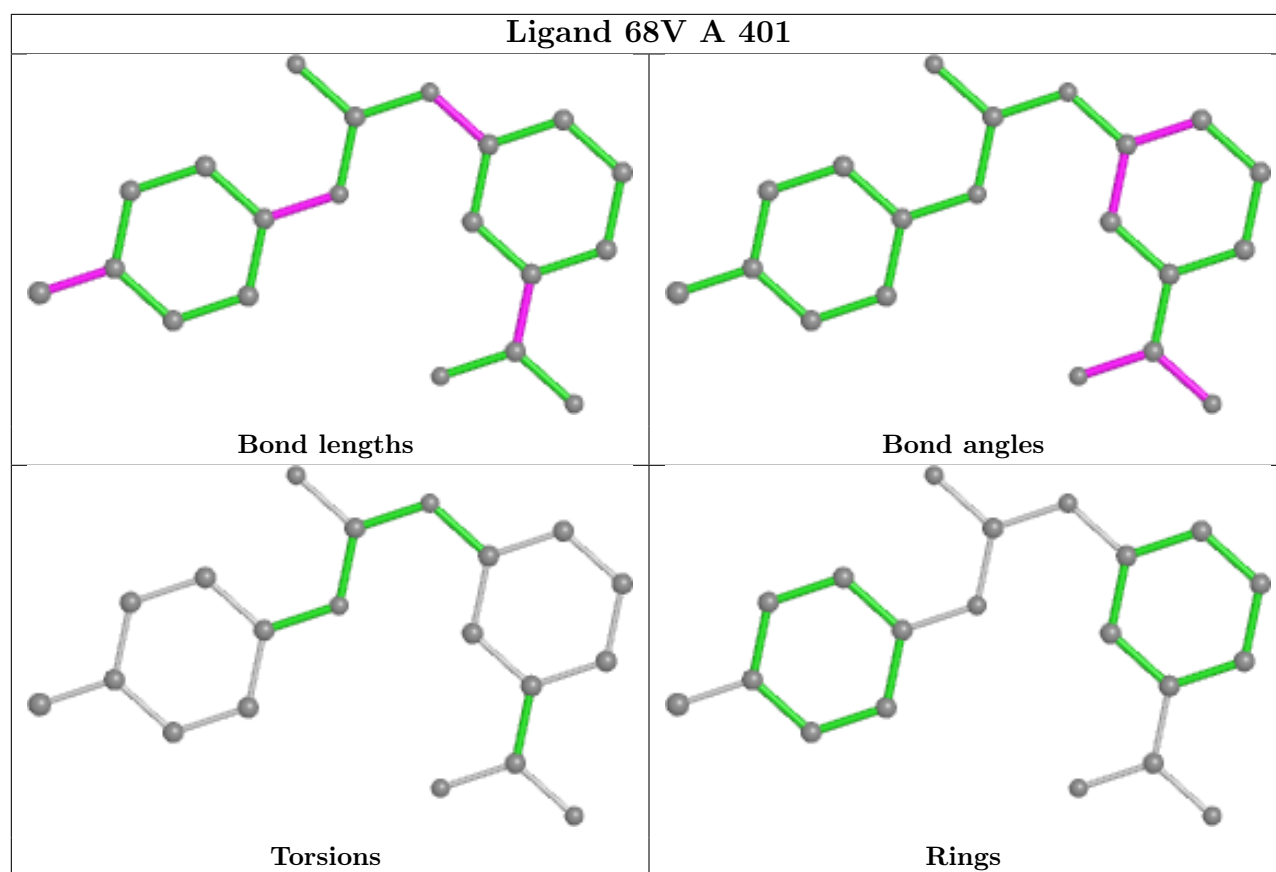


Ligand 68V D 401



Ligand 68V B 401





5.7 Other polymers [i](#)

There are no such residues in this entry.

5.8 Polymer linkage issues [i](#)

There are no chain breaks in this entry.

6 Fit of model and data ⓘ

6.1 Protein, DNA and RNA chains ⓘ

In the following table, the column labelled ‘#RSRZ > 2’ contains the number (and percentage) of RSRZ outliers, followed by percent RSRZ outliers for the chain as percentile scores relative to all X-ray entries and entries of similar resolution. The OWAB column contains the minimum, median, 95th percentile and maximum values of the occupancy-weighted average B-factor per residue. The column labelled ‘Q < 0.9’ lists the number of (and percentage) of residues with an average occupancy less than 0.9.

Mol	Chain	Analysed	<RSRZ>	#RSRZ>2	OWAB(Å ²)	Q<0.9
1	A	280/326 (85%)	-0.17	7 (2%) 57 53	17, 26, 42, 64	0
1	B	291/326 (89%)	-0.21	3 (1%) 82 81	18, 29, 45, 63	0
1	C	284/326 (87%)	0.35	29 (10%) 6 5	22, 39, 64, 80	0
1	D	304/326 (93%)	-0.10	5 (1%) 72 69	17, 29, 49, 77	0
All	All	1159/1304 (88%)	-0.04	44 (3%) 40 36	17, 30, 55, 80	0

All (44) RSRZ outliers are listed below:

Mol	Chain	Res	Type	RSRZ
1	C	281	LEU	8.6
1	C	238	ALA	5.5
1	C	280	ALA	5.3
1	C	282	ALA	4.2
1	A	66	GLY	3.9
1	A	31	ASP	3.7
1	B	282	ALA	3.5
1	C	276	VAL	3.4
1	C	237	THR	3.3
1	C	200	VAL	3.2
1	C	27	ASP	3.1
1	C	177	THR	3.1
1	B	67	LEU	3.0
1	A	30	ARG	3.0
1	C	178	HIS	2.9
1	C	278	ALA	2.9
1	C	206	VAL	2.9
1	C	279	GLY	2.7
1	C	203	VAL	2.7
1	C	34	HIS	2.6
1	C	283	ALA	2.6

Continued on next page...

Continued from previous page...

Mol	Chain	Res	Type	RSRZ
1	C	26	TRP	2.6
1	D	31	ASP	2.6
1	A	70	PRO	2.6
1	A	67	LEU	2.5
1	C	286	ARG	2.5
1	C	25	ARG	2.5
1	C	239	ARG	2.4
1	C	236	LEU	2.4
1	C	202	ASN	2.4
1	C	201	ALA	2.3
1	C	240	TYR	2.3
1	D	317	LEU	2.2
1	C	69	ARG	2.2
1	D	70	PRO	2.2
1	A	69	ARG	2.2
1	D	240	TYR	2.2
1	D	282	ALA	2.2
1	C	287	ALA	2.1
1	B	64	ALA	2.1
1	C	174	PRO	2.1
1	C	235	ILE	2.1
1	C	70	PRO	2.0
1	A	29	GLY	2.0

6.2 Non-standard residues in protein, DNA, RNA chains [i](#)

There are no non-standard protein/DNA/RNA residues in this entry.

6.3 Carbohydrates [i](#)

There are no monosaccharides in this entry.

6.4 Ligands [i](#)

In the following table, the Atoms column lists the number of modelled atoms in the group and the number defined in the chemical component dictionary. The B-factors column lists the minimum, median, 95th percentile and maximum values of B factors of atoms in the group. The column labelled 'Q < 0.9' lists the number of atoms with occupancy less than 0.9.

Continued on next page...

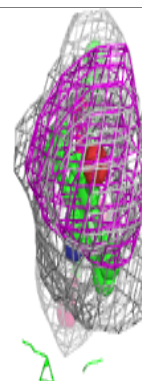
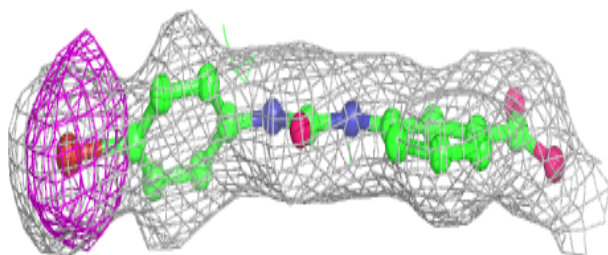
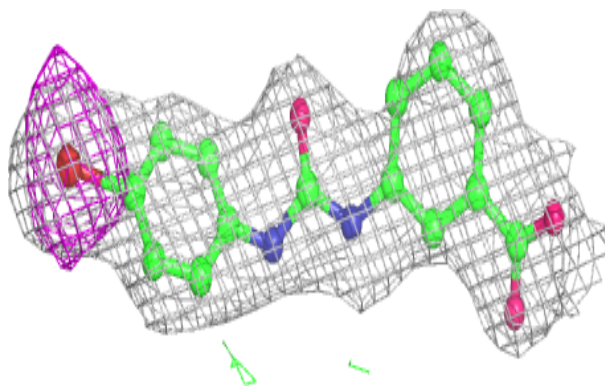
Continued from previous page...

Mol	Type	Chain	Res	Atoms	RSCC	RSR	B-factors(\AA^2)	Q<0.9
2	68V	A	401	20/20	0.92	0.13	23,26,33,45	0
2	68V	C	401	20/20	0.92	0.12	30,32,44,61	0
2	68V	D	401	20/20	0.92	0.15	19,21,35,46	0
2	68V	B	401	20/20	0.93	0.13	24,27,37,46	0
3	PLP	B	402	15/16	0.96	0.14	18,19,20,20	0
3	PLP	C	402	15/16	0.97	0.12	32,33,36,38	0
4	CL	D	402	1/1	0.98	0.12	34,34,34,34	0
3	PLP	D	403	15/16	0.99	0.14	17,19,19,21	0
3	PLP	A	402	15/16	0.99	0.11	17,19,21,22	0

The following is a graphical depiction of the model fit to experimental electron density of all instances of the Ligand of Interest. In addition, ligands with molecular weight > 250 and outliers as shown on the geometry validation Tables will also be included. Each fit is shown from different orientation to approximate a three-dimensional view.

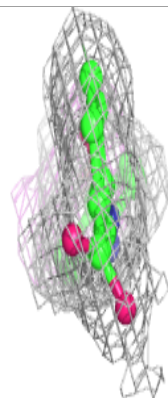
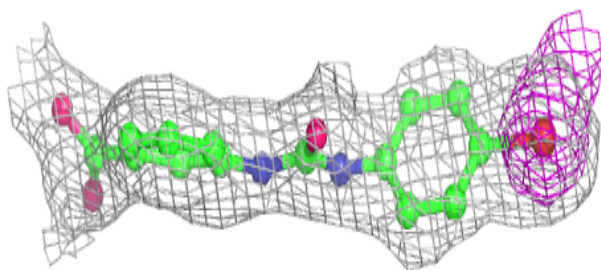
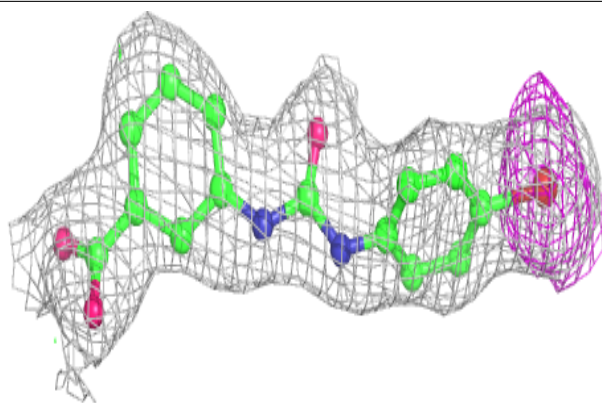
Electron density around 68V A 401:

2mF_o-DF_c (at 0.7 rmsd) in gray
mF_o-DF_c (at 3 rmsd) in purple (negative)
and green (positive)

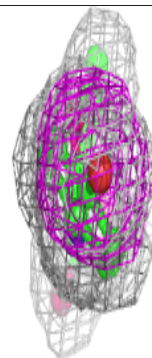
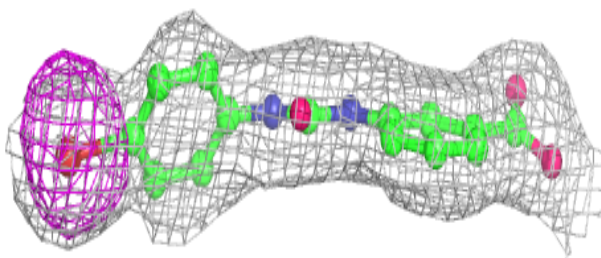
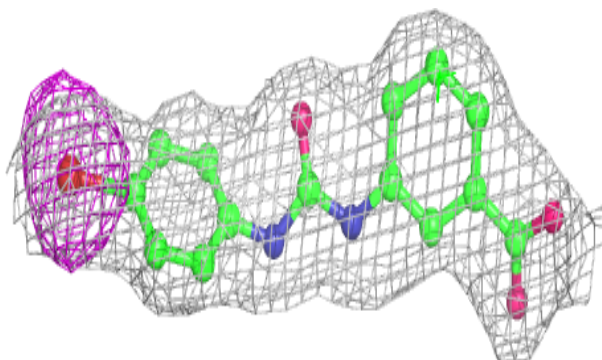


Electron density around 68V C 401:

$2mF_o-DF_c$ (at 0.7 rmsd) in gray
 mF_o-DF_c (at 3 rmsd) in purple (negative)
and green (positive)

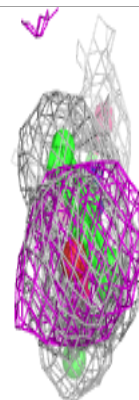
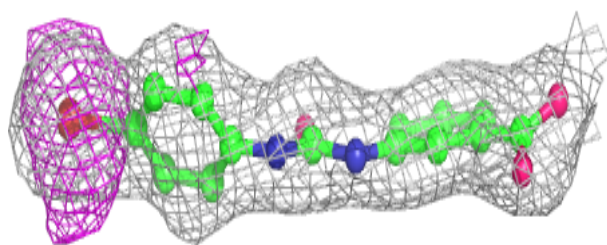
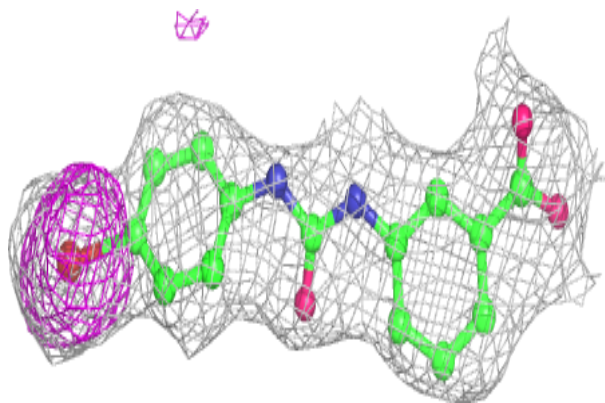
**Electron density around 68V D 401:**

$2mF_o-DF_c$ (at 0.7 rmsd) in gray
 mF_o-DF_c (at 3 rmsd) in purple (negative)
and green (positive)



Electron density around 68V B 401:

$2mF_o-DF_c$ (at 0.7 rmsd) in gray
 mF_o-DF_c (at 3 rmsd) in purple (negative)
and green (positive)



6.5 Other polymers [i](#)

There are no such residues in this entry.