



# Full wwPDB X-ray Structure Validation Report ⓘ

Jul 14, 2025 – 07:08 pm BST

PDB ID : 9I53 / pdb\_00009i53  
Title : Crystal structure of the SARS-CoV-2 helicase NSP13 in complex with ATP  
Authors : Kloskowski, P.; Neumann, P.; Ficner, R.  
Deposited on : 2025-01-27  
Resolution : 1.92 Å(reported)

This is a Full wwPDB X-ray Structure Validation Report for a publicly released PDB entry.

We welcome your comments at [validation@mail.wwpdb.org](mailto:validation@mail.wwpdb.org)

A user guide is available at

<https://www.wwpdb.org/validation/2017/XrayValidationReportHelp>

with specific help available everywhere you see the ⓘ symbol.

The types of validation reports are described at

<http://www.wwpdb.org/validation/2017/FAQs#types>.

---

The following versions of software and data (see [references ⓘ](#)) were used in the production of this report:

MolProbity : 4-5-2 with Phenix2.0rc1  
Mogul : 1.8.4, CSD as541be (2020)  
Xtriage (Phenix) : 2.0rc1  
EDS : 3.0  
buster-report : 1.1.7 (2018)  
Percentile statistics : 20231227.v01 (using entries in the PDB archive December 27th 2023)  
CCP4 : 9.0.006 (Gargrove)  
Density-Fitness : 1.0.12  
Ideal geometry (proteins) : Engh & Huber (2001)  
Ideal geometry (DNA, RNA) : Parkinson et al. (1996)  
Validation Pipeline (wwPDB-VP) : 2.44

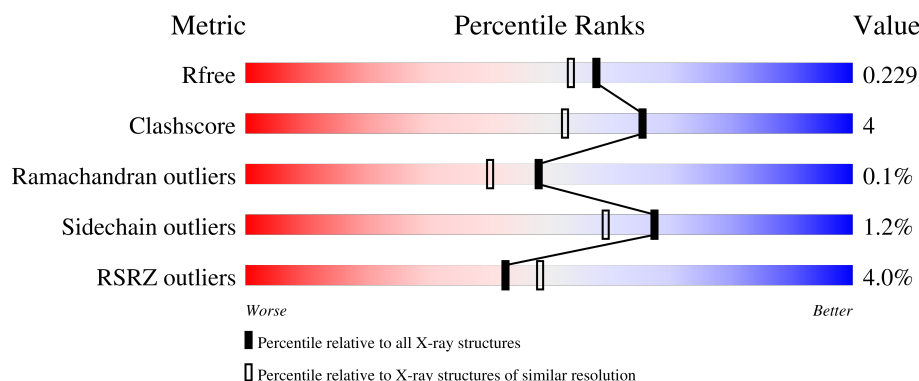
# 1 Overall quality at a glance

The following experimental techniques were used to determine the structure:

*X-RAY DIFFRACTION*

The reported resolution of this entry is 1.92 Å.

Percentile scores (ranging between 0-100) for global validation metrics of the entry are shown in the following graphic. The table shows the number of entries on which the scores are based.



Metric	Whole archive (#Entries)	Similar resolution (#Entries, resolution range(Å))
$R_{free}$	164625	1028 (1.92-1.92)
Clashscore	180529	1100 (1.92-1.92)
Ramachandran outliers	177936	1087 (1.92-1.92)
Sidechain outliers	177891	1087 (1.92-1.92)
RSRZ outliers	164620	1028 (1.92-1.92)

The table below summarises the geometric issues observed across the polymeric chains and their fit to the electron density. The red, orange, yellow and green segments of the lower bar indicate the fraction of residues that contain outliers for  $\geq 3$ , 2, 1 and 0 types of geometric quality criteria respectively. A grey segment represents the fraction of residues that are not modelled. The numeric value for each fraction is indicated below the corresponding segment, with a dot representing fractions  $\leq 5\%$ . The upper red bar (where present) indicates the fraction of residues that have poor fit to the electron density. The numeric value is given above the bar.

Mol	Chain	Length	Quality of chain
1	A	603	<div> <div>6%</div> <div> <div></div> <div>84%</div> <div>12%</div> <div>.</div> </div> </div>
1	B	603	<div> <div>2%</div> <div> <div></div> <div>90%</div> <div>8%</div> <div>.</div> </div> </div>

## 2 Entry composition

There are 6 unique types of molecules in this entry. The entry contains 9595 atoms, of which 0 are hydrogens and 0 are deuteriums.

In the tables below, the ZeroOcc column contains the number of atoms modelled with zero occupancy, the AltConf column contains the number of residues with at least one atom in alternate conformation and the Trace column contains the number of residues modelled with at most 2 atoms.

- Molecule 1 is a protein called SARS-CoV-2 helicase NSP13.

Mol	Chain	Residues	Atoms					ZeroOcc	AltConf	Trace
1	A	580	Total	C	N	O	S	0	1	0
			4464	2841	746	843	34			
1	B	588	Total	C	N	O	S	0	1	0
			4527	2886	753	852	36			

There are 4 discrepancies between the modelled and reference sequences:

Chain	Residue	Modelled	Actual	Comment	Reference
A	-1	SER	-	expression tag	UNP P0DTD1
A	0	MET	-	expression tag	UNP P0DTD1
B	-1	SER	-	expression tag	UNP P0DTD1
B	0	MET	-	expression tag	UNP P0DTD1

- Molecule 2 is ZINC ION (CCD ID: ZN) (formula: Zn).

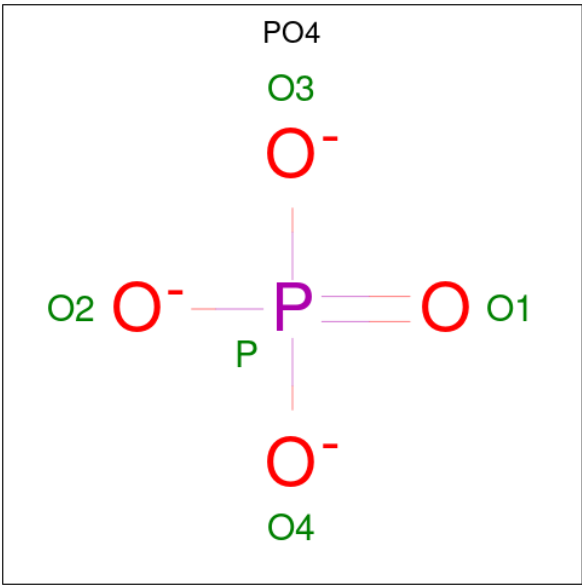
Mol	Chain	Residues	Atoms		ZeroOcc	AltConf
2	A	3	Total	Zn	0	0
			3	3		
2	B	3	Total	Zn	0	0
			3	3		

- Molecule 3 is ADENOSINE-5'-TRIPHOSPHATE (CCD ID: ATP) (formula: C<sub>10</sub>H<sub>16</sub>N<sub>5</sub>O<sub>13</sub>P<sub>3</sub>) (labeled as "Ligand of Interest" by depositor).



Mol	Chain	Residues	Atoms					ZeroOcc	AltConf
3	A	1	Total	C	N	O	P	0	0
			31	10	5	13	3		
3	A	1	Total	C	N	O	P	0	0
			31	10	5	13	3		
3	B	1	Total	C	N	O	P	0	1
			31	10	5	13	3		

- Molecule 4 is PHOSPHATE ION (CCD ID: PO4) (formula: O<sub>4</sub>P).



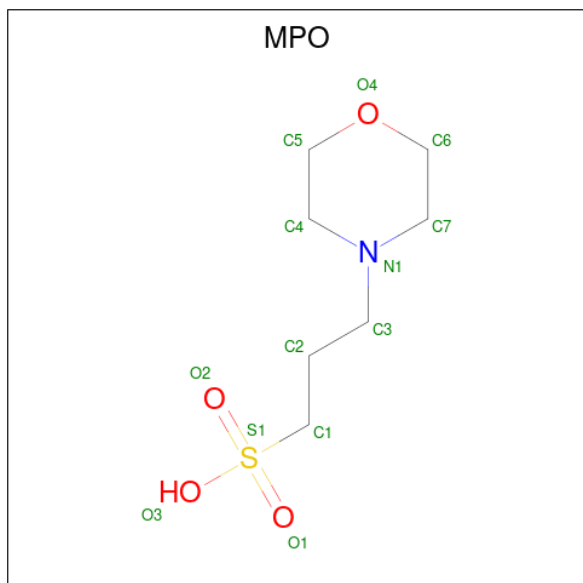
Mol	Chain	Residues	Atoms			ZeroOcc	AltConf
4	A	1	Total	O	P	0	0
			5	4	1		

Continued on next page...

Continued from previous page...

Mol	Chain	Residues	Atoms			ZeroOcc	AltConf
4	B	1	Total	O	P	0	0
			5	4	1		
4	B	1	Total	O	P	0	1
			5	4	1		

- Molecule 5 is 3[N-MORPHOLINO]PROPANE SULFONIC ACID (CCD ID: MPO) (formula:  $C_7H_{15}NO_4S$ ).



Mol	Chain	Residues	Atoms					ZeroOcc	AltConf
5	A	1	Total	C	N	O	S	0	0
			13	7	1	4	1		
5	B	1	Total	C	N	O	S	0	0
			13	7	1	4	1		

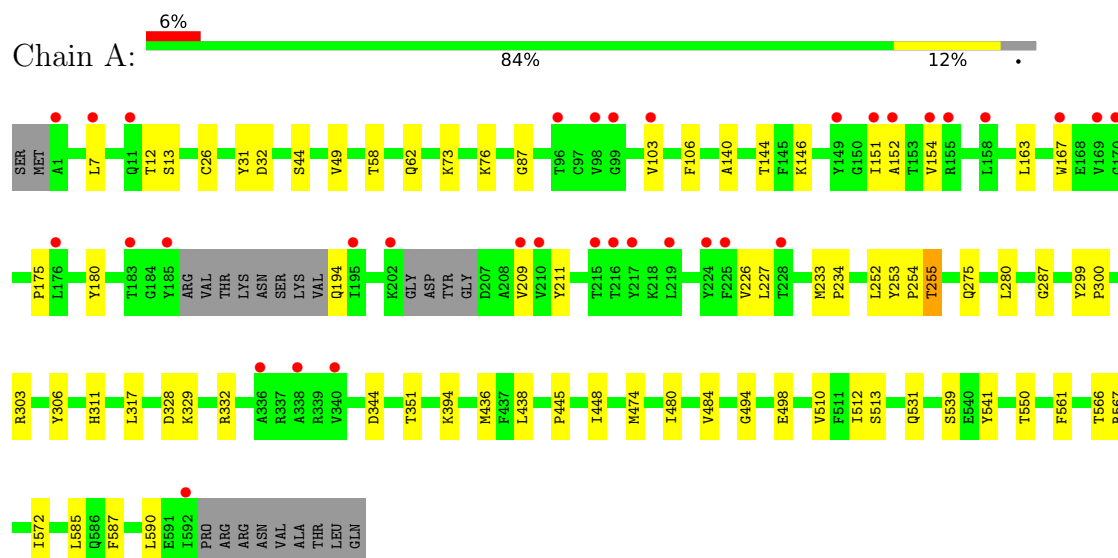
- Molecule 6 is water.

Mol	Chain	Residues	Atoms		ZeroOcc	AltConf
6	A	197	Total	O	0	0
			197	197		
6	B	267	Total	O	0	0
			267	267		

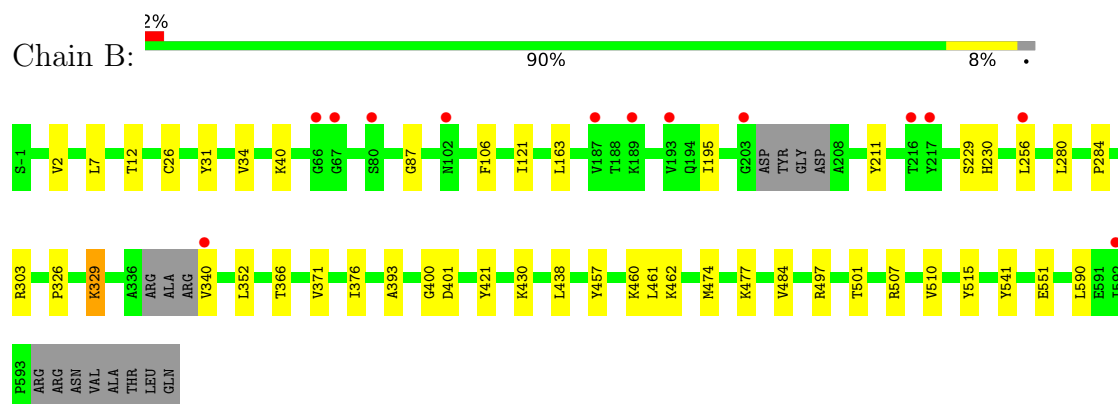
### 3 Residue-property plots [i](#)

These plots are drawn for all protein, RNA, DNA and oligosaccharide chains in the entry. The first graphic for a chain summarises the proportions of the various outlier classes displayed in the second graphic. The second graphic shows the sequence view annotated by issues in geometry and electron density. Residues are color-coded according to the number of geometric quality criteria for which they contain at least one outlier: green = 0, yellow = 1, orange = 2 and red = 3 or more. A red dot above a residue indicates a poor fit to the electron density ( $RSRZ > 2$ ). Stretches of 2 or more consecutive residues without any outlier are shown as a green connector. Residues present in the sample, but not in the model, are shown in grey.

#### • Molecule 1: SARS-CoV-2 helicase NSP13



#### • Molecule 1: SARS-CoV-2 helicase NSP13



## 4 Data and refinement statistics

Property	Value	Source
Space group	P 1	Depositor
Cell constants a, b, c, $\alpha$ , $\beta$ , $\gamma$	59.58Å 70.64Å 85.89Å 102.99° 95.29° 112.53°	Depositor
Resolution (Å)	31.81 – 1.92 31.81 – 1.92	Depositor EDS
% Data completeness (in resolution range)	90.3 (31.81-1.92) 90.3 (31.81-1.92)	Depositor EDS
$R_{merge}$	0.07	Depositor
$R_{sym}$	(Not available)	Depositor
$\langle I/\sigma(I) \rangle$ <sup>1</sup>	2.42 (at 1.92Å)	Xtriage
Refinement program	PHENIX (1.20.1_4487: ???)	Depositor
R, $R_{free}$	0.187 , 0.229 0.187 , 0.229	Depositor DCC
$R_{free}$ test set	4709 reflections (5.01%)	wwPDB-VP
Wilson B-factor (Å <sup>2</sup> )	29.8	Xtriage
Anisotropy	0.128	Xtriage
Bulk solvent $k_{sol}$ (e/Å <sup>3</sup> ), $B_{sol}$ (Å <sup>2</sup> )	0.33 , 48.1	EDS
L-test for twinning <sup>2</sup>	$\langle  L  \rangle = 0.50$ , $\langle L^2 \rangle = 0.33$	Xtriage
Estimated twinning fraction	No twinning to report.	Xtriage
$F_o, F_c$ correlation	0.96	EDS
Total number of atoms	9595	wwPDB-VP
Average B, all atoms (Å <sup>2</sup> )	42.0	wwPDB-VP

Xtriage's analysis on translational NCS is as follows: *The largest off-origin peak in the Patterson function is 6.29% of the height of the origin peak. No significant pseudotranslation is detected.*

<sup>1</sup>Intensities estimated from amplitudes.

<sup>2</sup>Theoretical values of  $\langle |L| \rangle$ ,  $\langle L^2 \rangle$  for acentric reflections are 0.5, 0.333 respectively for untwinned datasets, and 0.375, 0.2 for perfectly twinned datasets.

## 5 Model quality

### 5.1 Standard geometry

Bond lengths and bond angles in the following residue types are not validated in this section: PO4, MPO, ZN, ATP

The Z score for a bond length (or angle) is the number of standard deviations the observed value is removed from the expected value. A bond length (or angle) with  $|Z| > 5$  is considered an outlier worth inspection. RMSZ is the root-mean-square of all Z scores of the bond lengths (or angles).

Mol	Chain	Bond lengths		Bond angles	
		RMSZ	# Z  >5	RMSZ	# Z  >5
1	A	0.26	0/4567	0.50	0/6226
1	B	0.25	0/4629	0.50	0/6308
All	All	0.25	0/9196	0.50	0/12534

There are no bond length outliers.

There are no bond angle outliers.

There are no chirality outliers.

There are no planarity outliers.

### 5.2 Too-close contacts

In the following table, the Non-H and H(model) columns list the number of non-hydrogen atoms and hydrogen atoms in the chain respectively. The H(added) column lists the number of hydrogen atoms added and optimized by MolProbity. The Clashes column lists the number of clashes within the asymmetric unit, whereas Symm-Clashes lists symmetry-related clashes.

Mol	Chain	Non-H	H(model)	H(added)	Clashes	Symm-Clashes
1	A	4464	0	4363	42	0
1	B	4527	0	4445	24	0
2	A	3	0	0	0	0
2	B	3	0	0	0	0
3	A	62	0	24	3	0
3	B	31	0	12	1	0
4	A	5	0	0	0	0
4	B	10	0	0	0	0
5	A	13	0	15	0	0
5	B	13	0	15	1	0
6	A	197	0	0	4	0

*Continued on next page...*



*Continued from previous page...*

Mol	Chain	Non-H	H(model)	H(added)	Clashes	Symm-Clashes
6	B	267	0	0	4	0
All	All	9595	0	8874	67	0

The all-atom clashscore is defined as the number of clashes found per 1000 atoms (including hydrogen atoms). The all-atom clashscore for this structure is 4.

All (67) close contacts within the same asymmetric unit are listed below, sorted by their clash magnitude.

Atom-1	Atom-2	Interatomic distance (Å)	Clash overlap (Å)
1:B:326:PRO:HG2	1:B:329:LYS:HG3	1.60	0.84
1:A:394:LYS:NZ	3:A:707:ATP:O2B	2.26	0.69
1:A:474[B]:MET:HG2	1:A:590:LEU:HB2	1.76	0.68
1:B:474[B]:MET:HG2	1:B:590:LEU:HB2	1.80	0.63
1:A:146:LYS:HG2	1:A:227:LEU:HD13	1.83	0.60
1:A:194:GLN:N	6:A:805:HOH:O	2.34	0.60
1:A:510:VAL:HG21	1:A:541:TYR:CD2	2.37	0.59
1:B:477:LYS:NZ	1:B:551:GLU:OE2	2.30	0.58
1:A:154:VAL:HG13	1:A:163:LEU:HD13	1.86	0.57
1:A:275:GLN:NE2	6:A:803:HOH:O	2.30	0.57
1:A:163:LEU:HD23	1:A:211:TYR:CD1	2.40	0.57
1:B:507:ARG:HD2	6:B:1016:HOH:O	2.04	0.56
1:A:303:ARG:NH2	1:A:351:THR:O	2.39	0.56
1:B:7:LEU:HD21	1:B:106:PHE:HB2	1.87	0.55
1:A:255:THR:HG23	1:A:300:PRO:HG2	1.87	0.55
1:B:340:VAL:N	6:B:808:HOH:O	2.41	0.52
1:B:515:TYR:CD1	5:B:706:MPO:H11	2.45	0.52
1:A:311:HIS:HD1	1:A:332:ARG:HH22	1.58	0.51
1:A:585:LEU:HD22	1:A:587:PHE:CE2	2.46	0.51
1:A:140:ALA:O	1:A:144:THR:HG23	2.11	0.50
1:B:430:LYS:NZ	6:B:812:HOH:O	2.45	0.50
1:A:32:ASP:HB2	1:A:103:VAL:HG21	1.94	0.50
1:B:34:VAL:O	1:B:40:LYS:NZ	2.35	0.49
1:A:7:LEU:HD21	1:A:106:PHE:HB2	1.94	0.49
1:A:306:TYR:HB3	1:A:317:LEU:HD13	1.94	0.49
1:A:287:GLY:HA2	3:A:704:ATP:O2A	2.14	0.48
3:B:704[A]:ATP:O1G	6:B:801:HOH:O	2.20	0.48
1:A:49:VAL:HG23	1:A:58:THR:HG22	1.95	0.47
1:A:151:ILE:HD12	1:A:226:VAL:HG22	1.97	0.47
1:A:227:LEU:HD23	1:A:227:LEU:HA	1.74	0.47
1:B:371:VAL:HG23	1:B:393:ALA:HB2	1.97	0.47
1:B:121:ILE:HG23	1:B:421:TYR:CE1	2.50	0.47

*Continued on next page...*

*Continued from previous page...*

Atom-1	Atom-2	Interatomic distance (Å)	Clash overlap (Å)
1:A:445:PRO:HD2	1:A:448:ILE:HD12	1.97	0.46
1:B:510:VAL:HG21	1:B:541:TYR:CD1	2.51	0.46
1:A:13:SER:O	1:A:44:SER:HA	2.16	0.46
1:A:280:LEU:HB2	1:A:436:MET:HE3	1.98	0.46
1:B:12:THR:HB	1:B:26:CYS:HA	1.98	0.45
1:B:280:LEU:HD11	1:B:438:LEU:HG	1.97	0.45
1:B:303:ARG:NH2	1:B:366:THR:OG1	2.49	0.45
1:A:539:SER:O	1:A:567:ARG:HD3	2.17	0.45
1:A:512:ILE:HA	1:A:531:GLN:O	2.16	0.45
1:A:566:THR:OG1	1:A:567:ARG:NH2	2.37	0.45
1:A:252:LEU:HB3	1:A:299:TYR:CD1	2.52	0.44
1:A:328:ASP:OD1	1:A:328:ASP:N	2.49	0.44
1:A:73:LYS:HA	1:A:76:LYS:HD3	2.00	0.44
1:A:474[B]:MET:HE2	1:A:474[B]:MET:HB3	1.79	0.43
1:B:460:LYS:HB2	1:B:460:LYS:HE2	1.67	0.43
1:B:163:LEU:HG	1:B:211:TYR:CE1	2.53	0.43
1:B:401:ASP:OD2	1:B:457:TYR:OH	2.34	0.43
1:A:62:GLN:NE2	6:A:813:HOH:O	2.52	0.42
1:B:31:TYR:CE1	1:B:87:GLY:HA2	2.55	0.42
1:A:329:LYS:HE2	6:A:868:HOH:O	2.20	0.42
3:A:707:ATP:H5'1	1:B:2:VAL:HG11	2.02	0.42
1:A:280:LEU:HD11	1:A:438:LEU:HG	2.02	0.42
1:B:376:ILE:HG22	1:B:400:GLY:HA3	2.00	0.42
1:A:175:PRO:HG2	1:A:180:TYR:CE1	2.55	0.42
1:A:494:GLY:O	1:A:498:GLU:HG2	2.20	0.41
1:A:561:PHE:CZ	1:A:585:LEU:HD21	2.55	0.41
1:B:497:ARG:O	1:B:501:THR:HG23	2.21	0.41
1:A:12:THR:HB	1:A:26:CYS:HA	2.02	0.41
1:A:152:ALA:HB2	1:A:167:TRP:CZ3	2.55	0.41
1:A:480:ILE:HG12	1:A:550:THR:HG22	2.02	0.40
1:B:461:LEU:C	1:B:462:LYS:HD2	2.46	0.40
1:B:284:PRO:HD3	1:B:457:TYR:OH	2.22	0.40
1:A:31:TYR:CE2	1:A:87:GLY:HA2	2.57	0.40
1:A:253:TYR:HA	1:A:254:PRO:HD3	1.92	0.40
1:A:233:MET:HE3	1:A:234:PRO:HD2	2.04	0.40

There are no symmetry-related clashes.

## 5.3 Torsion angles

### 5.3.1 Protein backbone

In the following table, the Percentiles column shows the percent Ramachandran outliers of the chain as a percentile score with respect to all X-ray entries followed by that with respect to entries of similar resolution.

The Analysed column shows the number of residues for which the backbone conformation was analysed, and the total number of residues.

Mol	Chain	Analysed	Favoured	Allowed	Outliers	Percentiles	
1	A	575/603 (95%)	555 (96%)	19 (3%)	1 (0%)	44	34
1	B	583/603 (97%)	559 (96%)	24 (4%)	0	100	100
All	All	1158/1206 (96%)	1114 (96%)	43 (4%)	1 (0%)	48	40

All (1) Ramachandran outliers are listed below:

Mol	Chain	Res	Type
1	A	484	VAL

### 5.3.2 Protein sidechains

In the following table, the Percentiles column shows the percent sidechain outliers of the chain as a percentile score with respect to all X-ray entries followed by that with respect to entries of similar resolution.

The Analysed column shows the number of residues for which the sidechain conformation was analysed, and the total number of residues.

Mol	Chain	Analysed	Rotameric	Outliers	Percentiles	
1	A	490/525 (93%)	485 (99%)	5 (1%)	73	67
1	B	500/525 (95%)	493 (99%)	7 (1%)	62	51
All	All	990/1050 (94%)	978 (99%)	12 (1%)	67	59

All (12) residues with a non-rotameric sidechain are listed below:

Mol	Chain	Res	Type
1	A	209	VAL
1	A	255	THR
1	A	344	ASP
1	A	513	SER
1	A	572	ILE

*Continued on next page...*

*Continued from previous page...*

Mol	Chain	Res	Type
1	B	195	ILE
1	B	229	SER
1	B	230	HIS
1	B	256	LEU
1	B	329	LYS
1	B	352	LEU
1	B	484	VAL

Sometimes sidechains can be flipped to improve hydrogen bonding and reduce clashes. All (9) such sidechains are listed below:

Mol	Chain	Res	Type
1	A	62	GLN
1	A	88	GLN
1	A	275	GLN
1	A	459	ASN
1	B	88	GLN
1	B	459	ASN
1	B	470	GLN
1	B	531	GLN
1	B	586	GLN

### 5.3.3 RNA [i](#)

There are no RNA molecules in this entry.

## 5.4 Non-standard residues in protein, DNA, RNA chains [i](#)

There are no non-standard protein/DNA/RNA residues in this entry.

## 5.5 Carbohydrates [i](#)

There are no oligosaccharides in this entry.

## 5.6 Ligand geometry [i](#)

Of 14 ligands modelled in this entry, 6 are monoatomic - leaving 8 for Mogul analysis.

In the following table, the Counts columns list the number of bonds (or angles) for which Mogul statistics could be retrieved, the number of bonds (or angles) that are observed in the model and

the number of bonds (or angles) that are defined in the Chemical Component Dictionary. The Link column lists molecule types, if any, to which the group is linked. The Z score for a bond length (or angle) is the number of standard deviations the observed value is removed from the expected value. A bond length (or angle) with  $|Z| > 2$  is considered an outlier worth inspection. RMSZ is the root-mean-square of all Z scores of the bond lengths (or angles).

Mol	Type	Chain	Res	Link	Bond lengths			Bond angles		
					Counts	RMSZ	# Z  > 2	Counts	RMSZ	# Z  > 2
3	ATP	A	704	-	26,33,33	0.65	0	31,52,52	0.79	1 (3%)
4	PO4	A	705	-	4,4,4	0.99	0	6,6,6	0.58	0
4	PO4	B	707[B]	-	4,4,4	0.95	0	6,6,6	0.42	0
5	MPO	A	706	-	13,13,13	0.16	0	17,17,17	0.23	0
3	ATP	B	704[A]	-	26,33,33	0.59	0	31,52,52	0.77	2 (6%)
3	ATP	A	707	-	26,33,33	0.60	0	31,52,52	0.74	1 (3%)
4	PO4	B	705	-	4,4,4	0.80	0	6,6,6	0.36	0
5	MPO	B	706	-	13,13,13	0.21	0	17,17,17	0.30	0

In the following table, the Chirals column lists the number of chiral outliers, the number of chiral centers analysed, the number of these observed in the model and the number defined in the Chemical Component Dictionary. Similar counts are reported in the Torsion and Rings columns. '-' means no outliers of that kind were identified.

Mol	Type	Chain	Res	Link	Chirals	Torsions	Rings
3	ATP	A	704	-	-	1/18/38/38	0/3/3/3
5	MPO	A	706	-	-	2/7/15/15	0/1/1/1
3	ATP	B	704[A]	-	-	6/18/38/38	0/3/3/3
3	ATP	A	707	-	-	1/18/38/38	0/3/3/3
5	MPO	B	706	-	-	4/7/15/15	0/1/1/1

There are no bond length outliers.

All (4) bond angle outliers are listed below:

Mol	Chain	Res	Type	Atoms	Z	Observed(°)	Ideal(°)
3	A	707	ATP	C5-C6-N6	2.33	123.89	120.35
3	A	704	ATP	C5-C6-N6	2.28	123.82	120.35
3	B	704[A]	ATP	C5-C6-N6	2.28	123.82	120.35
3	B	704[A]	ATP	PB-O3B-PG	2.04	139.82	132.83

There are no chirality outliers.

All (14) torsion outliers are listed below:

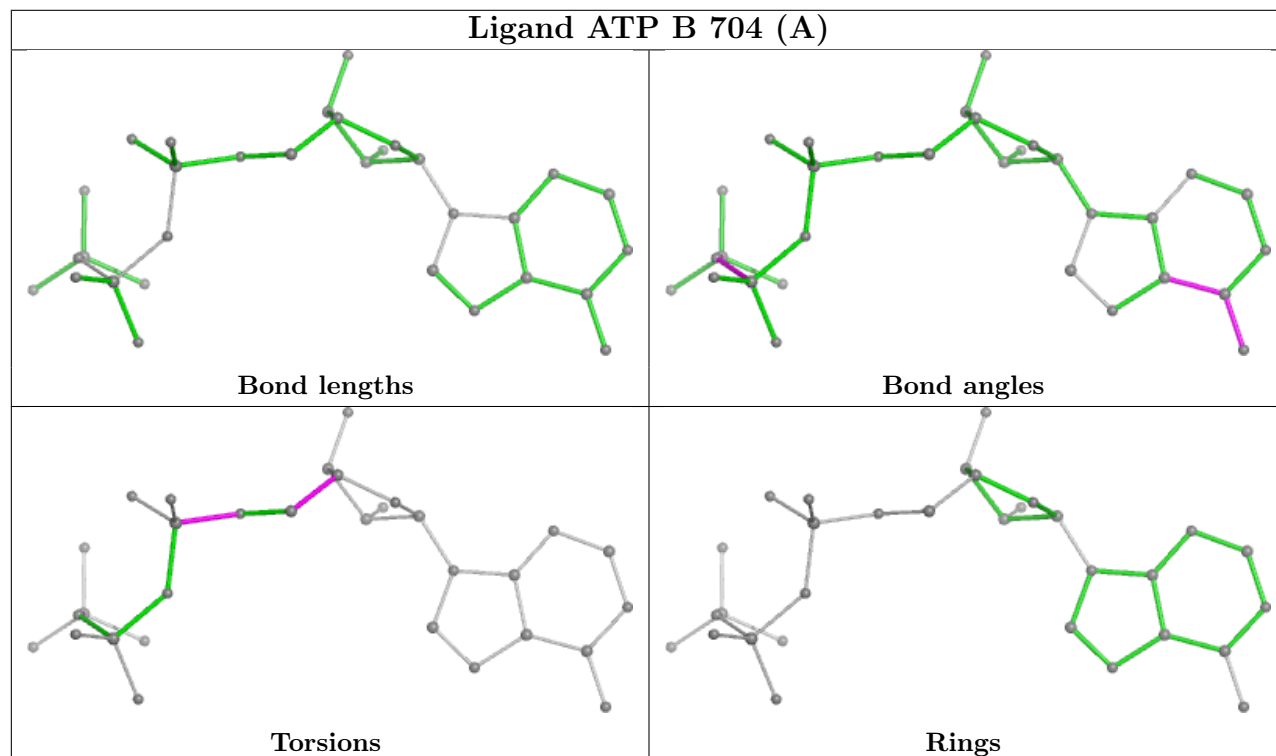
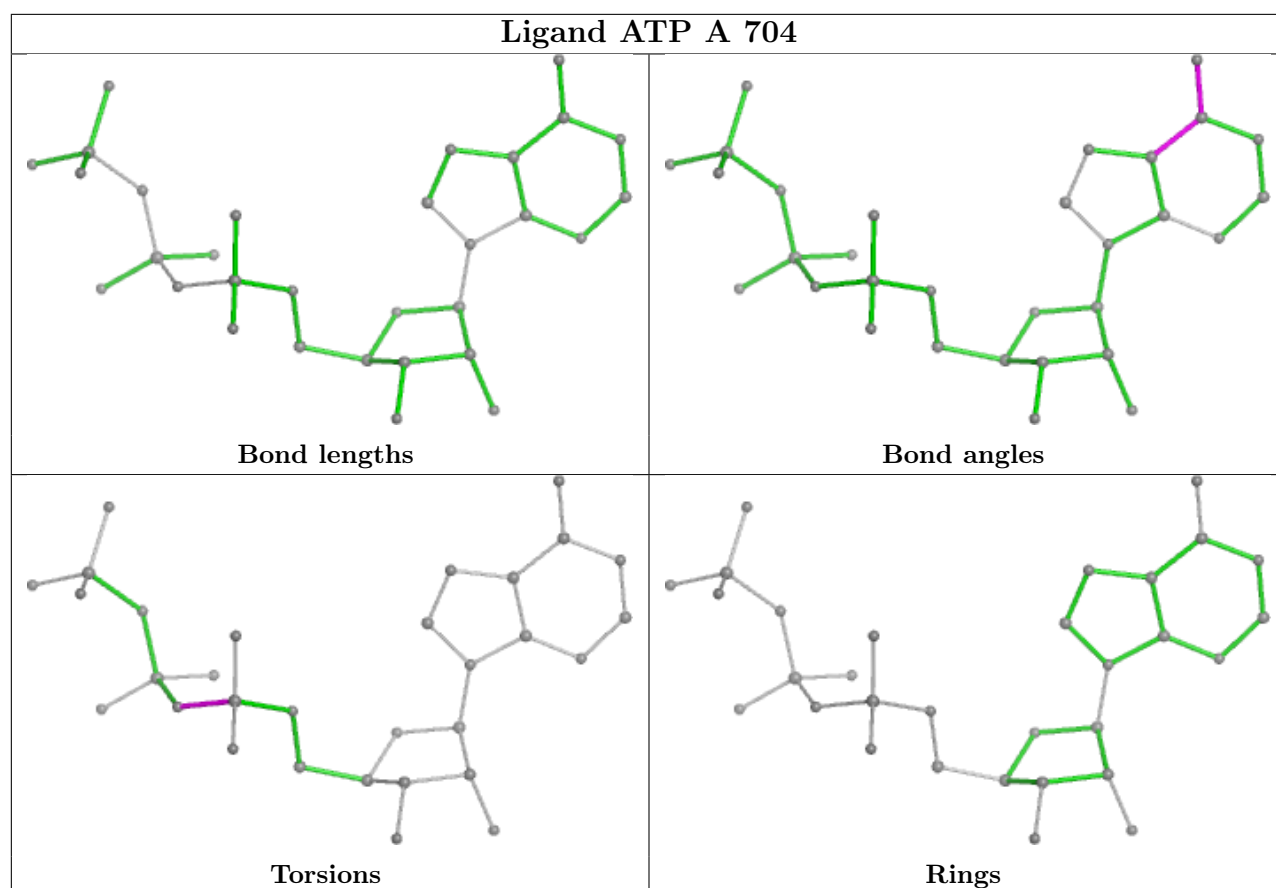
Mol	Chain	Res	Type	Atoms
3	A	704	ATP	PB-O3A-PA-O5'
3	B	704[A]	ATP	PB-O3B-PG-O2G
5	B	706	MPO	C2-C1-S1-O2
3	B	704[A]	ATP	O4'-C4'-C5'-O5'
3	B	704[A]	ATP	C3'-C4'-C5'-O5'
5	B	706	MPO	S1-C1-C2-C3
5	B	706	MPO	C2-C1-S1-O3
5	A	706	MPO	C2-C1-S1-O2
5	B	706	MPO	C2-C1-S1-O1
3	A	707	ATP	PB-O3A-PA-O1A
5	A	706	MPO	C2-C1-S1-O3
3	B	704[A]	ATP	PB-O3B-PG-O3G
3	B	704[A]	ATP	C5'-O5'-PA-O3A
3	B	704[A]	ATP	PB-O3B-PG-O1G

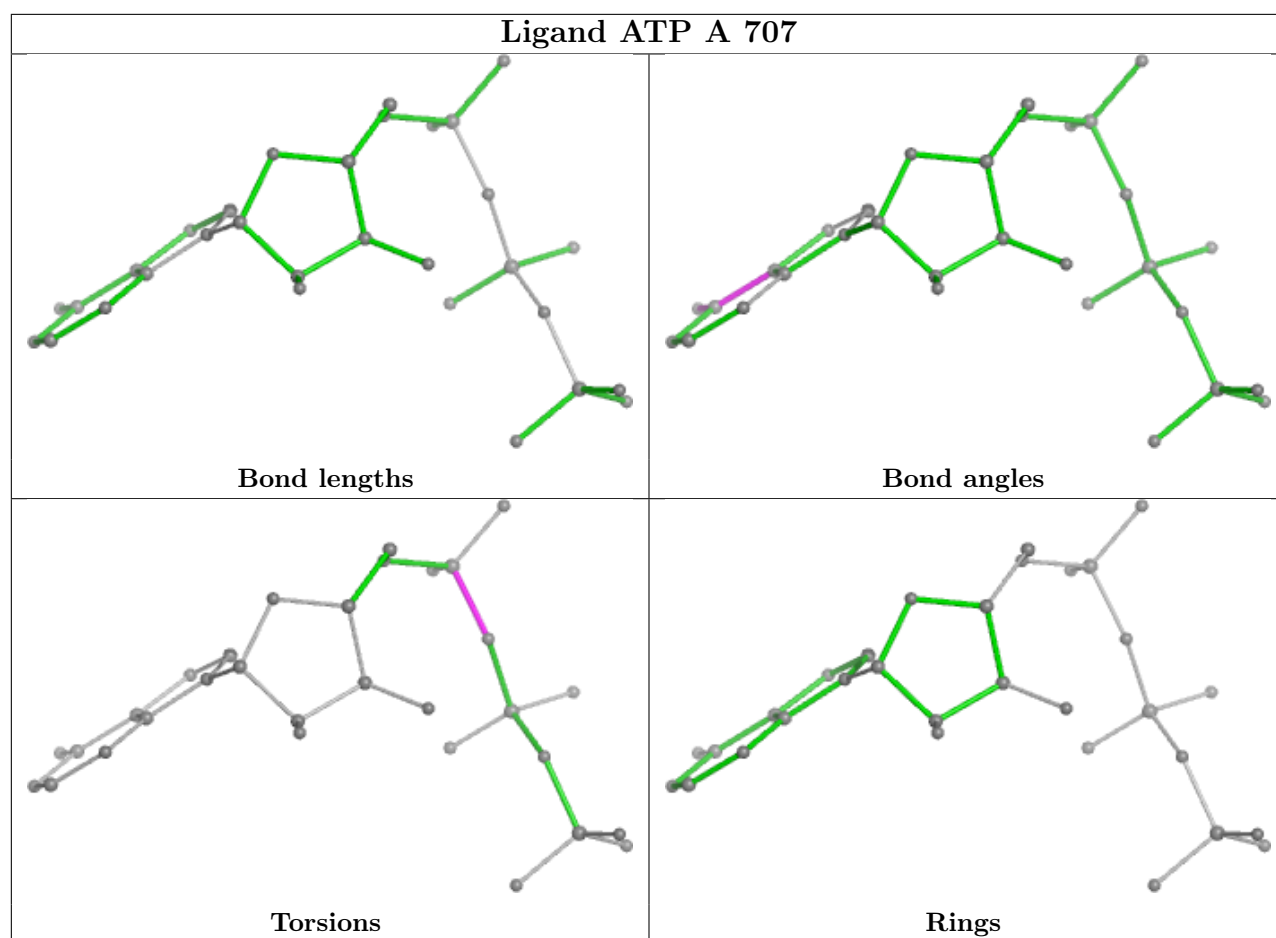
There are no ring outliers.

4 monomers are involved in 5 short contacts:

Mol	Chain	Res	Type	Clashes	Symm-Clashes
3	A	704	ATP	1	0
3	B	704[A]	ATP	1	0
3	A	707	ATP	2	0
5	B	706	MPO	1	0

The following is a two-dimensional graphical depiction of Mogul quality analysis of bond lengths, bond angles, torsion angles, and ring geometry for all instances of the Ligand of Interest. In addition, ligands with molecular weight > 250 and outliers as shown on the validation Tables will also be included. For torsion angles, if less than 5% of the Mogul distribution of torsion angles is within 10 degrees of the torsion angle in question, then that torsion angle is considered an outlier. Any bond that is central to one or more torsion angles identified as an outlier by Mogul will be highlighted in the graph. For rings, the root-mean-square deviation (RMSD) between the ring in question and similar rings identified by Mogul is calculated over all ring torsion angles. If the average RMSD is greater than 60 degrees and the minimal RMSD between the ring in question and any Mogul-identified rings is also greater than 60 degrees, then that ring is considered an outlier. The outliers are highlighted in purple. The color gray indicates Mogul did not find sufficient equivalents in the CSD to analyse the geometry.





## 5.7 Other polymers [i](#)

There are no such residues in this entry.

## 5.8 Polymer linkage issues [i](#)

There are no chain breaks in this entry.



## 6 Fit of model and data

### 6.1 Protein, DNA and RNA chains

In the following table, the column labelled ‘#RSRZ > 2’ contains the number (and percentage) of RSRZ outliers, followed by percent RSRZ outliers for the chain as percentile scores relative to all X-ray entries and entries of similar resolution. The OWAB column contains the minimum, median, 95<sup>th</sup> percentile and maximum values of the occupancy-weighted average B-factor per residue. The column labelled ‘Q < 0.9’ lists the number of (and percentage) of residues with an average occupancy less than 0.9.

Mol	Chain	Analysed	<RSRZ>	#RSRZ>2		OWAB(Å <sup>2</sup> )	Q<0.9
1	A	580/603 (96%)	0.35	34 (5%)	29 35	17, 40, 88, 103	1 (0%)
1	B	588/603 (97%)	0.16	13 (2%)	62 67	15, 35, 68, 90	1 (0%)
All	All	1168/1206 (96%)	0.26	47 (4%)	43 48	15, 38, 81, 103	2 (0%)

All (47) RSRZ outliers are listed below:

Mol	Chain	Res	Type	RSRZ
1	A	592	ILE	4.8
1	A	228	THR	3.7
1	B	217	TYR	3.7
1	A	176	LEU	3.5
1	A	336	ALA	3.5
1	B	340	VAL	3.5
1	A	340	VAL	3.4
1	A	219	LEU	3.3
1	A	169	VAL	3.2
1	B	189	LYS	3.2
1	B	203	GLY	3.1
1	A	99	GLY	3.1
1	A	151	ILE	2.8
1	B	102	ASN	2.8
1	A	224	TYR	2.8
1	A	152	ALA	2.8
1	A	98	VAL	2.7
1	A	183	THR	2.7
1	A	209	VAL	2.6
1	A	338	ALA	2.6
1	A	185	TYR	2.6
1	A	210	VAL	2.6
1	A	202	LYS	2.6
1	A	195	ILE	2.6

*Continued on next page...*

*Continued from previous page...*

Mol	Chain	Res	Type	RSRZ
1	A	158	LEU	2.5
1	B	256	LEU	2.5
1	A	155	ARG	2.5
1	B	187	VAL	2.4
1	A	96	THR	2.4
1	A	225	PHE	2.4
1	B	193	VAL	2.3
1	A	216	THR	2.3
1	A	149	TYR	2.3
1	A	7	LEU	2.3
1	A	1	ALA	2.2
1	A	217	TYR	2.2
1	B	592	ILE	2.2
1	A	103	VAL	2.1
1	B	66	GLY	2.1
1	A	11	GLN	2.1
1	A	170	GLY	2.1
1	A	154	VAL	2.1
1	A	167	TRP	2.1
1	A	215	THR	2.1
1	B	216	THR	2.0
1	B	67	GLY	2.0
1	B	80	SER	2.0

## 6.2 Non-standard residues in protein, DNA, RNA chains [i](#)

There are no non-standard protein/DNA/RNA residues in this entry.

## 6.3 Carbohydrates [i](#)

There are no oligosaccharides in this entry.

## 6.4 Ligands [i](#)

In the following table, the Atoms column lists the number of modelled atoms in the group and the number defined in the chemical component dictionary. The B-factors column lists the minimum, median, 95<sup>th</sup> percentile and maximum values of B factors of atoms in the group. The column labelled 'Q < 0.9' lists the number of atoms with occupancy less than 0.9.

*Continued on next page...*

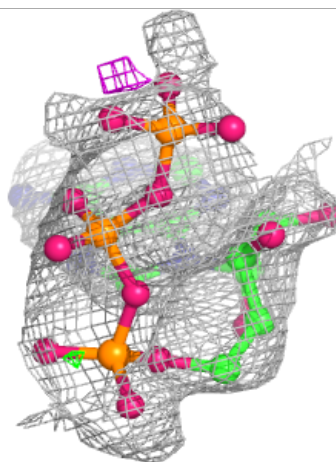
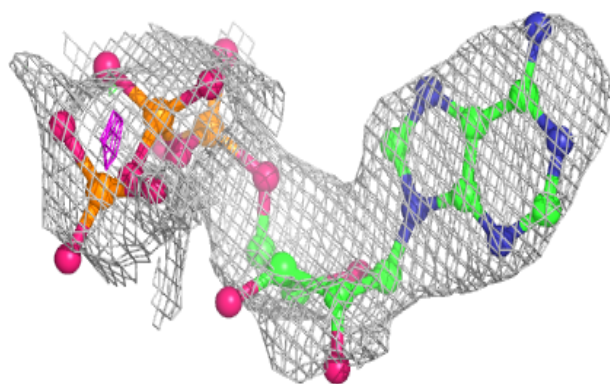
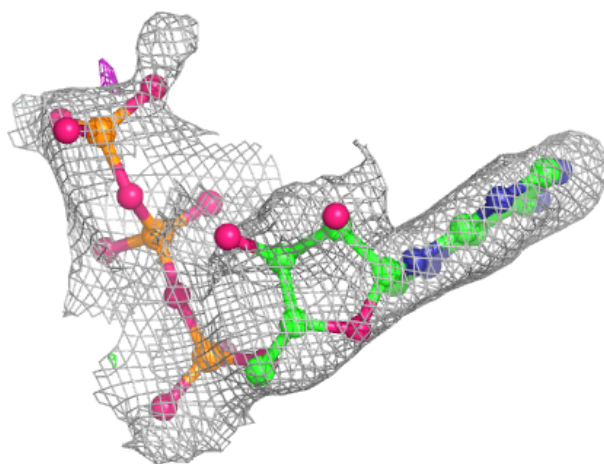
*Continued from previous page...*

Mol	Type	Chain	Res	Atoms	RSCC	RSR	B-factors( $\text{\AA}^2$ )	Q<0.9
5	MPO	A	706	13/13	0.79	0.17	39,47,56,58	13
3	ATP	A	707	31/31	0.82	0.11	48,70,96,98	31
3	ATP	B	704[A]	31/31	0.87	0.15	34,52,66,70	31
5	MPO	B	706	13/13	0.89	0.14	40,44,55,57	13
4	PO4	B	705	5/5	0.95	0.08	27,31,34,41	5
3	ATP	A	704	31/31	0.96	0.07	23,42,48,49	31
4	PO4	B	707[B]	5/5	0.96	0.07	34,38,46,47	5
2	ZN	A	701	1/1	0.97	0.04	38,38,38,38	0
4	PO4	A	705	5/5	0.97	0.06	27,31,36,36	0
2	ZN	A	702	1/1	0.98	0.05	36,36,36,36	0
2	ZN	A	703	1/1	0.98	0.04	52,52,52,52	0
2	ZN	B	701	1/1	0.98	0.03	32,32,32,32	0
2	ZN	B	702	1/1	0.98	0.03	44,44,44,44	0
2	ZN	B	703	1/1	0.99	0.04	52,52,52,52	0

The following is a graphical depiction of the model fit to experimental electron density of all instances of the Ligand of Interest. In addition, ligands with molecular weight > 250 and outliers as shown on the geometry validation Tables will also be included. Each fit is shown from different orientation to approximate a three-dimensional view.

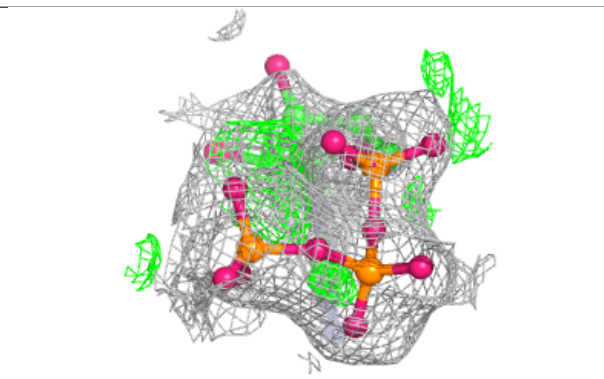
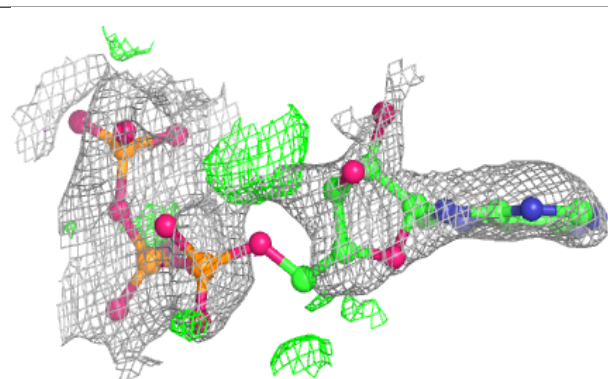
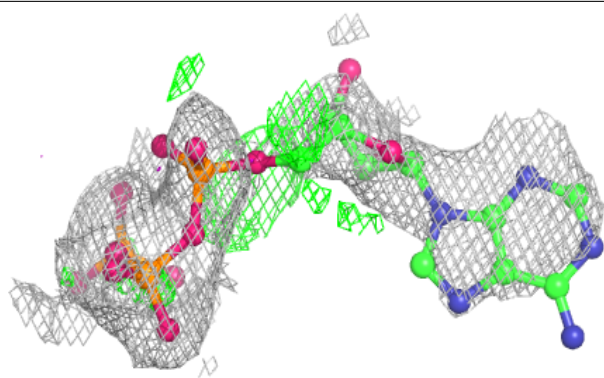
**Electron density around ATP A 707:**

$2mF_o-DF_c$  (at 0.7 rmsd) in gray  
 $mF_o-DF_c$  (at 3 rmsd) in purple (negative)  
and green (positive)

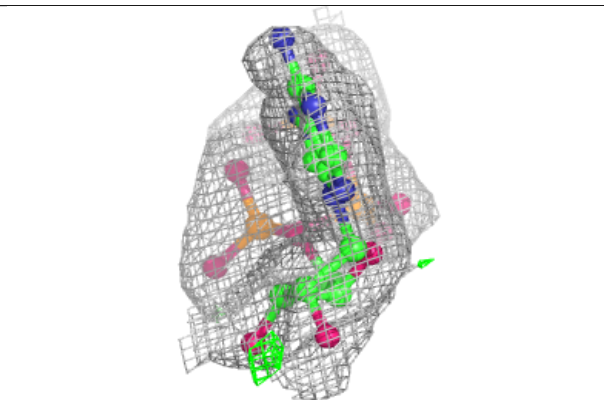
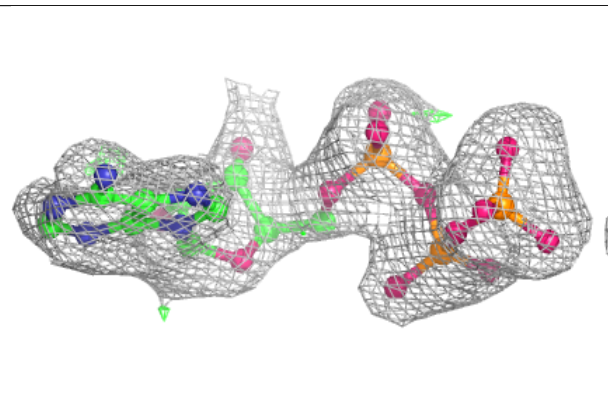
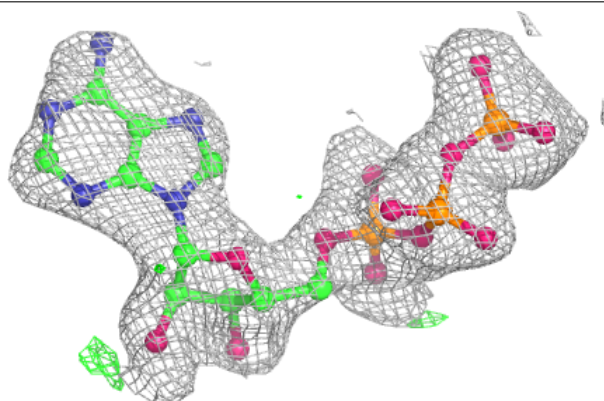


**Electron density around ATP B 704 (A):**

$2mF_o-DF_c$  (at 0.7 rmsd) in gray  
 $mF_o-DF_c$  (at 3 rmsd) in purple (negative)  
and green (positive)

**Electron density around ATP A 704:**

$2mF_o-DF_c$  (at 0.7 rmsd) in gray  
 $mF_o-DF_c$  (at 3 rmsd) in purple (negative)  
and green (positive)



## 6.5 Other polymers [i](#)

There are no such residues in this entry.