



Full wwPDB X-ray Structure Validation Report ⓘ

Mar 26, 2025 – 01:40 PM EDT

PDB ID : 7I4H
Title : Group deposition of Cocksackievirus A16 (G-10) 2A protease in complex with inhibitors from the ASAP AViDD centre – Crystal structure of Cocksackievirus A16 (G-10) 2A protease in complex with ASAP-0036609-001 (A71EV2A-x4707)
Authors : Lithgo, R.M.; Fairhead, M.; Koekemoer, L.; Balcomb, B.H.; Capkin, E.; Chandran, A.V.; Golding, M.; Godoy, A.S.; Aschenbrenner, J.C.; Marples, P.G.; Ni, X.; Thompson, W.; Tomlinson, C.W.E.; Wild, C.; Winokan, M.; Xavier, M.-A.E.; Kenton, N.; Tucker, J.; DiPoto, M.; Lee, A.; Fearon, D.; von Delft, F.
Deposited on : 2025-03-12
Resolution : 1.15 Å(reported)

This is a Full wwPDB X-ray Structure Validation Report for a publicly released PDB entry.

We welcome your comments at validation@mail.wwpdb.org

A user guide is available at

<https://www.wwpdb.org/validation/2017/XrayValidationReportHelp>

with specific help available everywhere you see the ⓘ symbol.

The types of validation reports are described at

<http://www.wwpdb.org/validation/2017/FAQs#types>.

The following versions of software and data (see [references ⓘ](#)) were used in the production of this report:

MolProbity	:	4.02b-467
Mogul	:	2022.3.0, CSD as543be (2022)
Xtriage (Phenix)	:	1.21
EDS	:	3.0
buster-report	:	1.1.7 (2018)
Percentile statistics	:	20231227.v01 (using entries in the PDB archive December 27th 2023)

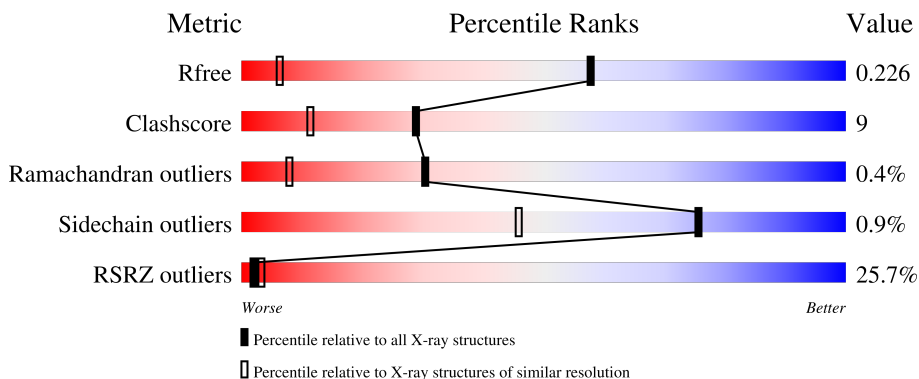
1 Overall quality at a glance

The following experimental techniques were used to determine the structure:

X-RAY DIFFRACTION

The reported resolution of this entry is 1.15 Å.

Percentile scores (ranging between 0-100) for global validation metrics of the entry are shown in the following graphic. The table shows the number of entries on which the scores are based.



Metric	Whole archive (#Entries)	Similar resolution (#Entries, resolution range(Å))
R_{free}	164625	1049 (1.18-1.14)
Clashscore	180529	1146 (1.18-1.14)
Ramachandran outliers	177936	1120 (1.18-1.14)
Sidechain outliers	177891	1120 (1.18-1.14)
RSRZ outliers	164620	1049 (1.18-1.14)

The table below summarises the geometric issues observed across the polymeric chains and their fit to the electron density. The red, orange, yellow and green segments of the lower bar indicate the fraction of residues that contain outliers for ≥ 3 , 2, 1 and 0 types of geometric quality criteria respectively. A grey segment represents the fraction of residues that are not modelled. The numeric value for each fraction is indicated below the corresponding segment, with a dot representing fractions $\leq 5\%$. The upper red bar (where present) indicates the fraction of residues that have poor fit to the electron density. The numeric value is given above the bar.

Mol	Chain	Length	Quality of chain
1	A	144	
1	C	144	

CCP4 : 9.0.004 (Gargrove)
 Density-Fitness : 1.0.11
 Ideal geometry (proteins) : Engh & Huber (2001)
 Ideal geometry (DNA, RNA) : Parkinson et al. (1996)
 Validation Pipeline (wwPDB-VP) : 2.41.4

2 Entry composition [i](#)

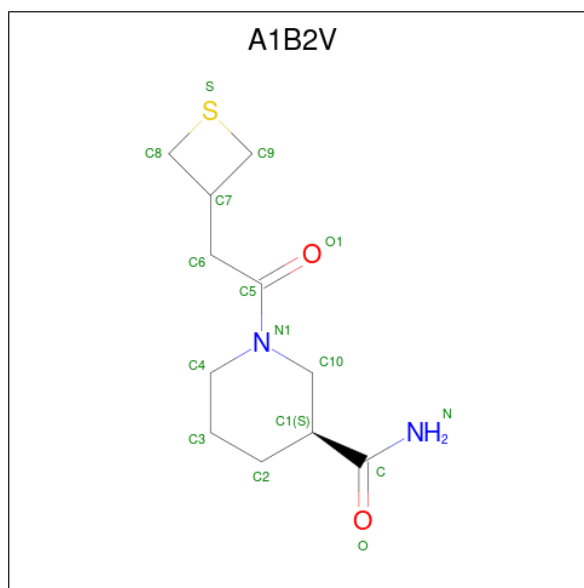
There are 5 unique types of molecules in this entry. The entry contains 2554 atoms, of which 0 are hydrogens and 0 are deuteriums.

In the tables below, the ZeroOcc column contains the number of atoms modelled with zero occupancy, the AltConf column contains the number of residues with at least one atom in alternate conformation and the Trace column contains the number of residues modelled with at most 2 atoms.

- Molecule 1 is a protein called Protease 2A.

Mol	Chain	Residues	Atoms					ZeroOcc	AltConf	Trace
1	A	140	Total	C	N	O	S	0	2	0
			1090	682	193	208	7			
1	C	140	Total	C	N	O	S	0	2	0
			1090	682	193	208	7			

- Molecule 2 is (3S)-1-[(thietan-3-yl)acetyl]piperidine-3-carboxamide (three-letter code: A1B2V) (formula: C₁₁H₁₈N₂O₂S) (labeled as "Ligand of Interest" by depositor).



Mol	Chain	Residues	Atoms					ZeroOcc	AltConf
2	A	1	Total	C	N	O	S	0	0
			16	11	2	2	1		

- Molecule 3 is ZINC ION (three-letter code: ZN) (formula: Zn).

Mol	Chain	Residues	Atoms		ZeroOcc	AltConf
3	A	1	Total	Zn	0	0
			1	1		

Continued on next page...

Continued from previous page...

Mol	Chain	Residues	Atoms		ZeroOcc	AltConf
3	C	1	Total	Zn	0	0
			1	1		

- Molecule 4 is DIMETHYL SULFOXIDE (three-letter code: DMS) (formula: C_2H_6OS).



Mol	Chain	Residues	Atoms				ZeroOcc	AltConf
4	C	1	Total	C	O	S	0	0
			4	2	1	1		
4	C	1	Total	C	O	S	0	0
			4	2	1	1		

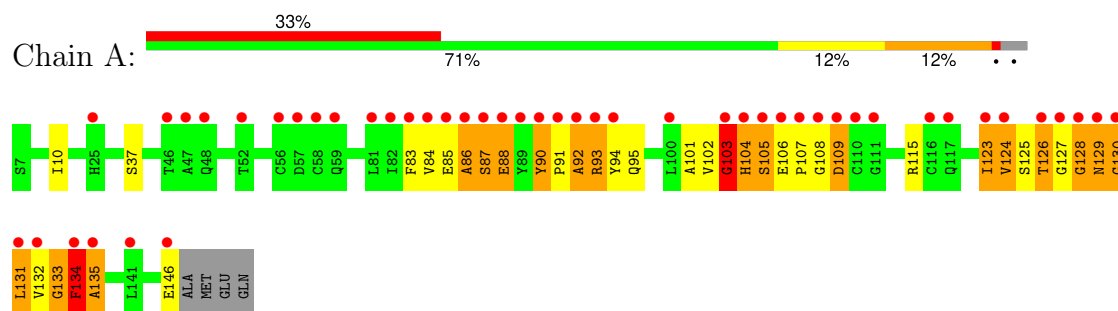
- Molecule 5 is water.

Mol	Chain	Residues	Atoms		ZeroOcc	AltConf
5	A	160	Total	O	0	0
			160	160		
5	C	188	Total	O	0	0
			188	188		

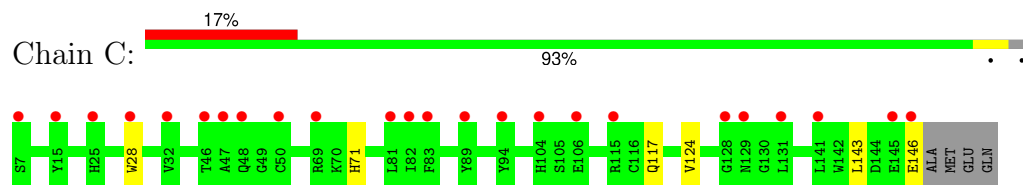
3 Residue-property plots [i](#)

These plots are drawn for all protein, RNA, DNA and oligosaccharide chains in the entry. The first graphic for a chain summarises the proportions of the various outlier classes displayed in the second graphic. The second graphic shows the sequence view annotated by issues in geometry and electron density. Residues are color-coded according to the number of geometric quality criteria for which they contain at least one outlier: green = 0, yellow = 1, orange = 2 and red = 3 or more. A red dot above a residue indicates a poor fit to the electron density ($RSRZ > 2$). Stretches of 2 or more consecutive residues without any outlier are shown as a green connector. Residues present in the sample, but not in the model, are shown in grey.

• Molecule 1: Protease 2A



• Molecule 1: Protease 2A



4 Data and refinement statistics

Property	Value	Source
Space group	C 1 2 1	Depositor
Cell constants a, b, c, α , β , γ	86.54Å 57.20Å 64.77Å 90.00° 94.77° 90.00°	Depositor
Resolution (Å)	37.53 – 1.15 37.53 – 1.15	Depositor EDS
% Data completeness (in resolution range)	76.1 (37.53-1.15) 76.1 (37.53-1.15)	Depositor EDS
R_{merge}	0.04	Depositor
R_{sym}	(Not available)	Depositor
$\langle I/\sigma(I) \rangle$ ¹	1.04 (at 1.15Å)	Xtriage
Refinement program	BUSTER 2.10.4 (23-JAN-2024)	Depositor
R, R_{free}	0.198 , 0.217 0.216 , 0.226	Depositor DCC
R_{free} test set	4261 reflections (5.03%)	wwPDB-VP
Wilson B-factor (Å ²)	15.5	Xtriage
Anisotropy	0.094	Xtriage
Bulk solvent k_{sol} (e/Å ³), B_{sol} (Å ²)	0.36 , 36.2	EDS
L-test for twinning ²	$\langle L \rangle = 0.50$, $\langle L^2 \rangle = 0.34$	Xtriage
Estimated twinning fraction	No twinning to report.	Xtriage
F_o, F_c correlation	0.96	EDS
Total number of atoms	2554	wwPDB-VP
Average B, all atoms (Å ²)	23.0	wwPDB-VP

Xtriage's analysis on translational NCS is as follows: *The analyses of the Patterson function reveals a significant off-origin peak that is 60.84 % of the origin peak, indicating pseudo-translational symmetry. The chance of finding a peak of this or larger height randomly in a structure without pseudo-translational symmetry is equal to 1.4319e-05. The detected translational NCS is most likely also responsible for the elevated intensity ratio.*

¹Intensities estimated from amplitudes.

²Theoretical values of $\langle |L| \rangle$, $\langle L^2 \rangle$ for acentric reflections are 0.5, 0.333 respectively for untwinned datasets, and 0.375, 0.2 for perfectly twinned datasets.

5 Model quality

5.1 Standard geometry

Bond lengths and bond angles in the following residue types are not validated in this section: A1B2V, ZN, DMS

The Z score for a bond length (or angle) is the number of standard deviations the observed value is removed from the expected value. A bond length (or angle) with $|Z| > 5$ is considered an outlier worth inspection. RMSZ is the root-mean-square of all Z scores of the bond lengths (or angles).

Mol	Chain	Bond lengths		Bond angles	
		RMSZ	$\# Z > 5$	RMSZ	$\# Z > 5$
1	A	1.67	23/1122 (2.0%)	1.43	23/1526 (1.5%)
1	C	0.70	0/1122	0.70	0/1526
All	All	1.28	23/2244 (1.0%)	1.13	23/3052 (0.8%)

Chiral center outliers are detected by calculating the chiral volume of a chiral center and verifying if the center is modelled as a planar moiety or with the opposite hand. A planarity outlier is detected by checking planarity of atoms in a peptide group, atoms in a mainchain group or atoms of a sidechain that are expected to be planar.

Mol	Chain	#Chirality outliers	#Planarity outliers
1	A	0	5

All (23) bond length outliers are listed below:

Mol	Chain	Res	Type	Atoms	Z	Observed(Å)	Ideal(Å)
1	A	87	SER	C-O	-15.21	0.94	1.23
1	A	92	ALA	C-O	-15.02	0.94	1.23
1	A	107	PRO	C-O	-14.94	0.93	1.23
1	A	84	VAL	C-O	-13.79	0.97	1.23
1	A	87	SER	CA-CB	11.81	1.70	1.52
1	A	90	TYR	C-O	-10.03	1.04	1.23
1	A	105	SER	CA-CB	9.94	1.67	1.52
1	A	125	SER	CA-CB	9.21	1.66	1.52
1	A	105	SER	C-O	-8.38	1.07	1.23
1	A	126	THR	C-O	-8.33	1.07	1.23
1	A	88	GLU	CD-OE1	-7.99	1.16	1.25
1	A	135	ALA	C-O	-7.33	1.09	1.23
1	A	128	GLY	C-O	-7.15	1.12	1.23
1	A	125	SER	C-O	-6.86	1.10	1.23
1	A	86	ALA	C-O	-6.79	1.10	1.23
1	A	88	GLU	C-O	-6.52	1.10	1.23

Continued on next page...

Continued from previous page...

Mol	Chain	Res	Type	Atoms	Z	Observed(Å)	Ideal(Å)
1	A	108	GLY	C-O	-6.20	1.13	1.23
1	A	133	GLY	C-O	-6.11	1.13	1.23
1	A	103	GLY	C-O	5.93	1.33	1.23
1	A	123	ILE	C-O	5.81	1.34	1.23
1	A	92	ALA	N-CA	5.58	1.57	1.46
1	A	129	ASN	C-O	-5.43	1.13	1.23
1	A	93	ARG	C-O	-5.17	1.13	1.23

All (23) bond angle outliers are listed below:

Mol	Chain	Res	Type	Atoms	Z	Observed(°)	Ideal(°)
1	A	103	GLY	O-C-N	-12.38	102.90	122.70
1	A	90	TYR	CB-CG-CD1	-10.21	114.88	121.00
1	A	90	TYR	CB-CG-CD2	9.23	126.54	121.00
1	A	105	SER	O-C-N	8.71	136.63	122.70
1	A	93	ARG	CB-CG-CD	8.05	132.52	111.60
1	A	92	ALA	N-CA-CB	7.48	120.57	110.10
1	A	84	VAL	CA-C-N	-7.05	101.68	117.20
1	A	109	ASP	N-CA-CB	-6.65	98.63	110.60
1	A	102	VAL	C-N-CA	-6.55	108.55	122.30
1	A	84	VAL	O-C-N	6.54	133.16	122.70
1	A	87	SER	CA-C-N	-6.48	102.95	117.20
1	A	135	ALA	CA-C-O	-6.38	106.70	120.10
1	A	86	ALA	CA-C-N	-6.10	103.78	117.20
1	A	109	ASP	N-CA-C	6.05	127.33	111.00
1	A	87	SER	O-C-N	6.03	132.35	122.70
1	A	104	HIS	C-N-CA	5.96	136.61	121.70
1	A	103	GLY	C-N-CA	-5.79	107.23	121.70
1	A	130	GLY	C-N-CA	-5.70	107.45	121.70
1	A	93	ARG	CG-CD-NE	5.63	123.62	111.80
1	A	84	VAL	CA-CB-CG1	5.51	119.17	110.90
1	A	107	PRO	CA-C-N	-5.46	105.28	116.20
1	A	134	PHE	O-C-N	5.39	131.33	122.70
1	A	126	THR	CA-C-N	-5.22	105.76	116.20

There are no chirality outliers.

All (5) planarity outliers are listed below:

Mol	Chain	Res	Type	Group
1	A	103	GLY	Mainchain
1	A	104	HIS	Mainchain
1	A	129	ASN	Mainchain

Continued on next page...

Continued from previous page...

Mol	Chain	Res	Type	Group
1	A	131	LEU	Mainchain
1	A	135	ALA	Mainchain

5.2 Too-close contacts

In the following table, the Non-H and H(model) columns list the number of non-hydrogen atoms and hydrogen atoms in the chain respectively. The H(added) column lists the number of hydrogen atoms added and optimized by MolProbity. The Clashes column lists the number of clashes within the asymmetric unit, whereas Symm-Clashes lists symmetry-related clashes.

Mol	Chain	Non-H	H(model)	H(added)	Clashes	Symm-Clashes
1	A	1090	0	1037	32	0
1	C	1090	0	1037	6	0
2	A	16	0	0	1	0
3	A	1	0	0	0	0
3	C	1	0	0	0	0
4	C	8	0	12	0	0
5	A	160	0	0	8	0
5	C	188	0	0	4	0
All	All	2554	0	2086	37	0

The all-atom clashscore is defined as the number of clashes found per 1000 atoms (including hydrogen atoms). The all-atom clashscore for this structure is 9.

All (37) close contacts within the same asymmetric unit are listed below, sorted by their clash magnitude.

Atom-1	Atom-2	Interatomic distance (Å)	Clash overlap (Å)
1:A:92:ALA:O	5:A:301:HOH:O	1.89	0.90
1:A:123:ILE:O	1:A:124:VAL:C	2.15	0.82
1:A:128:GLY:O	1:A:131:LEU:N	2.14	0.77
1:C:143:LEU:HD12	5:C:301:HOH:O	1.88	0.73
1:A:105:SER:HA	1:A:109:ASP:OD2	1.92	0.70
1:A:88:GLU:OE1	5:A:302:HOH:O	2.10	0.69
1:A:106:GLU:O	1:A:109:ASP:HB2	1.94	0.68
1:A:86:ALA:HB2	5:A:385:HOH:O	1.92	0.68
1:A:123:ILE:O	1:A:123:ILE:HG13	1.97	0.64
1:A:146:GLU:O	1:A:146:GLU:HG3	2.00	0.62
1:A:109:ASP:HB2	2:A:201:A1B2V:S	2.41	0.61
1:C:146:GLU:HG3	1:C:146:GLU:O	2.02	0.58
1:A:90:TYR:HB3	1:A:91:PRO:HD2	1.86	0.58

Continued on next page...

Continued from previous page...

Atom-1	Atom-2	Interatomic distance (Å)	Clash overlap (Å)
1:A:126:THR:OG1	1:A:133:GLY:HA3	2.05	0.57
1:A:128:GLY:C	1:A:130:GLY:H	2.07	0.57
1:C:117:GLN:HG2	5:C:387:HOH:O	2.06	0.56
1:A:103:GLY:HA2	5:A:400:HOH:O	2.06	0.56
1:A:83:PHE:HB2	1:A:94:TYR:CE1	2.42	0.54
1:A:103:GLY:O	5:A:303:HOH:O	2.18	0.52
1:A:128:GLY:C	1:A:130:GLY:N	2.65	0.50
1:A:105:SER:OG	1:A:127:GLY:HA3	2.12	0.50
1:A:128:GLY:O	1:A:130:GLY:N	2.45	0.49
1:A:87:SER:HB3	5:A:310:HOH:O	2.15	0.47
1:A:127:GLY:HA2	1:A:131:LEU:C	2.35	0.46
1:C:71:HIS:HD2	5:C:450:HOH:O	1.99	0.45
1:A:128:GLY:N	1:A:131:LEU:O	2.43	0.45
1:A:126:THR:HB	5:A:402:HOH:O	2.15	0.45
1:A:132:VAL:HG22	1:A:134:PHE:CE1	2.52	0.44
1:A:37:SER:O	1:A:95:GLN:HG3	2.17	0.43
1:C:124:VAL:HG21	5:C:307:HOH:O	2.17	0.43
1:A:123:ILE:O	1:A:124:VAL:O	2.34	0.42
1:A:146:GLU:O	1:A:146:GLU:CG	2.67	0.42
1:A:101:ALA:HB3	1:A:134:PHE:HZ	1.84	0.42
1:A:10:ILE:HD11	1:A:123:ILE:HG23	2.02	0.42
1:A:87:SER:O	5:A:304:HOH:O	2.22	0.41
1:A:115:ARG:HD2	1:C:28:TRP:CD2	2.56	0.41
1:A:83:PHE:HE2	1:A:85:GLU:HG2	1.85	0.41

There are no symmetry-related clashes.

5.3 Torsion angles [i](#)

5.3.1 Protein backbone [i](#)

In the following table, the Percentiles column shows the percent Ramachandran outliers of the chain as a percentile score with respect to all X-ray entries followed by that with respect to entries of similar resolution.

The Analysed column shows the number of residues for which the backbone conformation was analysed, and the total number of residues.

Mol	Chain	Analysed	Favoured	Allowed	Outliers	Percentiles
1	A	140/144 (97%)	133 (95%)	6 (4%)	1 (1%)	19 2

Continued on next page...

Continued from previous page...

Mol	Chain	Analysed	Favoured	Allowed	Outliers	Percentiles	
1	C	140/144 (97%)	138 (99%)	2 (1%)	0	100	100
All	All	280/288 (97%)	271 (97%)	8 (3%)	1 (0%)	30	8

All (1) Ramachandran outliers are listed below:

Mol	Chain	Res	Type
1	A	124	VAL

5.3.2 Protein sidechains ⓘ

In the following table, the Percentiles column shows the percent sidechain outliers of the chain as a percentile score with respect to all X-ray entries followed by that with respect to entries of similar resolution.

The Analysed column shows the number of residues for which the sidechain conformation was analysed, and the total number of residues.

Mol	Chain	Analysed	Rotameric	Outliers	Percentiles	
1	A	119/120 (99%)	117 (98%)	2 (2%)	56	19
1	C	119/120 (99%)	119 (100%)	0	100	100
All	All	238/240 (99%)	236 (99%)	2 (1%)	75	51

All (2) residues with a non-rotameric sidechain are listed below:

Mol	Chain	Res	Type
1	A	93	ARG
1	A	134	PHE

Sometimes sidechains can be flipped to improve hydrogen bonding and reduce clashes. All (3) such sidechains are listed below:

Mol	Chain	Res	Type
1	A	14	ASN
1	A	71	HIS
1	C	71	HIS

5.3.3 RNA ⓘ

There are no RNA molecules in this entry.

5.4 Non-standard residues in protein, DNA, RNA chains [i](#)

There are no non-standard protein/DNA/RNA residues in this entry.

5.5 Carbohydrates [i](#)

There are no oligosaccharides in this entry.

5.6 Ligand geometry [i](#)

Of 5 ligands modelled in this entry, 2 are monoatomic - leaving 3 for Mogul analysis.

In the following table, the Counts columns list the number of bonds (or angles) for which Mogul statistics could be retrieved, the number of bonds (or angles) that are observed in the model and the number of bonds (or angles) that are defined in the Chemical Component Dictionary. The Link column lists molecule types, if any, to which the group is linked. The Z score for a bond length (or angle) is the number of standard deviations the observed value is removed from the expected value. A bond length (or angle) with $|Z| > 2$ is considered an outlier worth inspection. RMSZ is the root-mean-square of all Z scores of the bond lengths (or angles).

Mol	Type	Chain	Res	Link	Bond lengths			Bond angles		
					Counts	RMSZ	$\# Z > 2$	Counts	RMSZ	$\# Z > 2$
4	DMS	C	202	-	3,3,3	0.79	0	3,3,3	0.46	0
2	A1B2V	A	201	-	15,17,17	1.03	1 (6%)	19,23,23	1.52	4 (21%)
4	DMS	C	203	-	3,3,3	0.69	0	3,3,3	0.39	0

In the following table, the Chirals column lists the number of chiral outliers, the number of chiral centers analysed, the number of these observed in the model and the number defined in the Chemical Component Dictionary. Similar counts are reported in the Torsion and Rings columns. '-' means no outliers of that kind were identified.

Mol	Type	Chain	Res	Link	Chirals	Torsions	Rings
2	A1B2V	A	201	-	-	0/12/28/28	0/2/2/2

All (1) bond length outliers are listed below:

Mol	Chain	Res	Type	Atoms	Z	Observed(Å)	Ideal(Å)
2	A	201	A1B2V	O-C	-2.72	1.18	1.23

All (4) bond angle outliers are listed below:

Mol	Chain	Res	Type	Atoms	Z	Observed(°)	Ideal(°)
2	A	201	A1B2V	C1-C-N	-3.07	111.36	116.45

Continued on next page...

Continued from previous page...

Mol	Chain	Res	Type	Atoms	Z	Observed(°)	Ideal(°)
2	A	201	A1B2V	C9-S-C8	-2.51	74.27	77.58
2	A	201	A1B2V	C10-C1-C	2.43	114.64	110.07
2	A	201	A1B2V	C2-C3-C4	2.27	113.74	110.75

There are no chirality outliers.

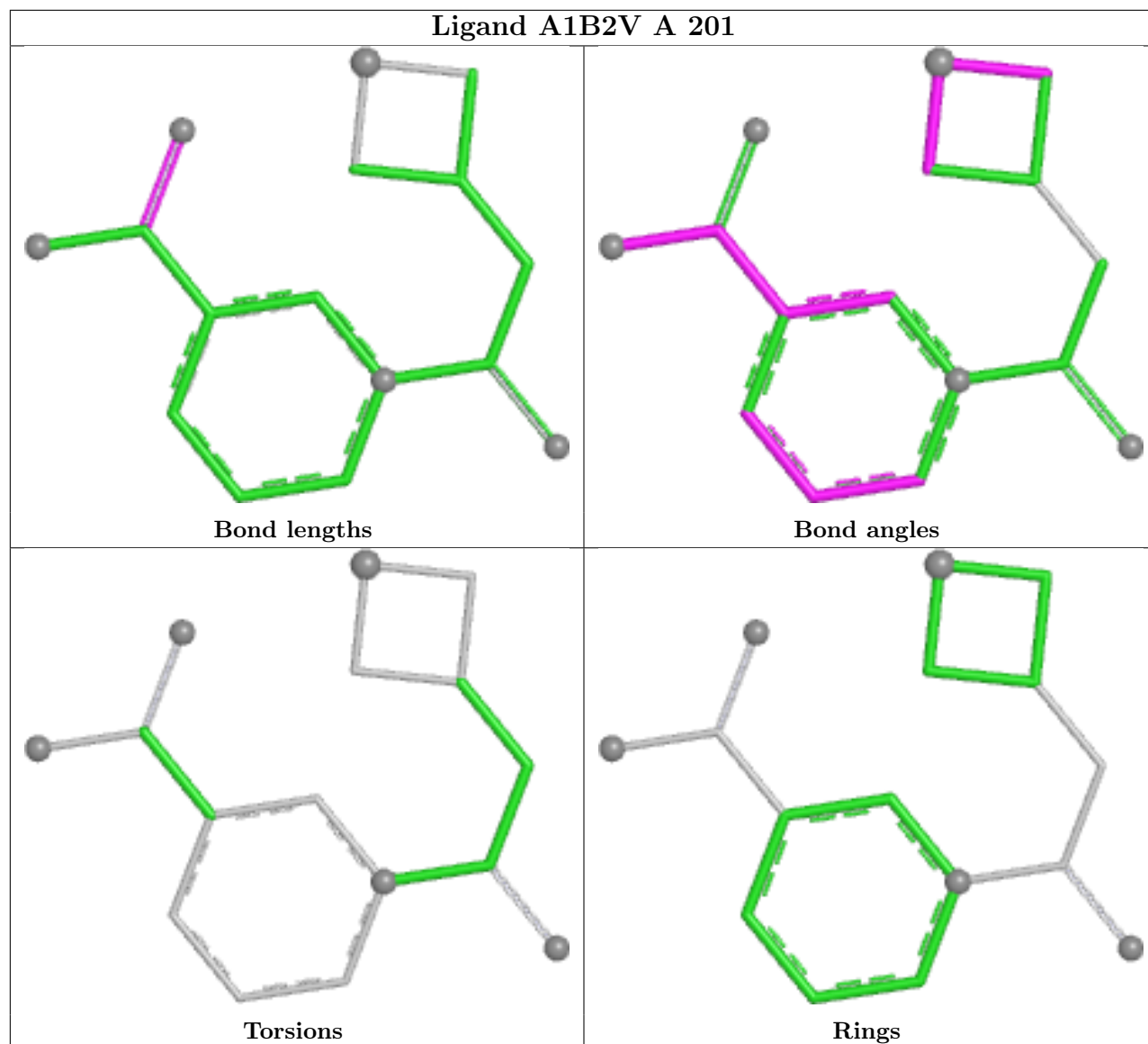
There are no torsion outliers.

There are no ring outliers.

1 monomer is involved in 1 short contact:

Mol	Chain	Res	Type	Clashes	Symm-Clashes
2	A	201	A1B2V	1	0

The following is a two-dimensional graphical depiction of Mogul quality analysis of bond lengths, bond angles, torsion angles, and ring geometry for all instances of the Ligand of Interest. In addition, ligands with molecular weight > 250 and outliers as shown on the validation Tables will also be included. For torsion angles, if less than 5% of the Mogul distribution of torsion angles is within 10 degrees of the torsion angle in question, then that torsion angle is considered an outlier. Any bond that is central to one or more torsion angles identified as an outlier by Mogul will be highlighted in the graph. For rings, the root-mean-square deviation (RMSD) between the ring in question and similar rings identified by Mogul is calculated over all ring torsion angles. If the average RMSD is greater than 60 degrees and the minimal RMSD between the ring in question and any Mogul-identified rings is also greater than 60 degrees, then that ring is considered an outlier. The outliers are highlighted in purple. The color gray indicates Mogul did not find sufficient equivalents in the CSD to analyse the geometry.



5.7 Other polymers [i](#)

There are no such residues in this entry.

5.8 Polymer linkage issues [i](#)

There are no chain breaks in this entry.

6 Fit of model and data

6.1 Protein, DNA and RNA chains

In the following table, the column labelled ‘#RSRZ> 2’ contains the number (and percentage) of RSRZ outliers, followed by percent RSRZ outliers for the chain as percentile scores relative to all X-ray entries and entries of similar resolution. The OWAB column contains the minimum, median, 95th percentile and maximum values of the occupancy-weighted average B-factor per residue. The column labelled ‘Q< 0.9’ lists the number of (and percentage) of residues with an average occupancy less than 0.9.

Mol	Chain	Analysed	<RSRZ>	#RSRZ>2	OWAB(Å ²)	Q<0.9
1	A	140/144 (97%)	2.28	48 (34%) 1 2	9, 18, 35, 51	2 (1%)
1	C	140/144 (97%)	0.95	24 (17%) 5 7	10, 18, 30, 49	2 (1%)
All	All	280/288 (97%)	1.62	72 (25%) 2 3	9, 18, 33, 51	4 (1%)

All (72) RSRZ outliers are listed below:

Mol	Chain	Res	Type	RSRZ
1	A	92	ALA	11.5
1	A	107	PRO	10.8
1	A	134	PHE	10.5
1	A	91	PRO	9.9
1	A	84	VAL	8.9
1	A	127	GLY	8.7
1	A	126	THR	8.7
1	A	108	GLY	8.5
1	A	87	SER	8.5
1	A	103	GLY	8.4
1	A	109	ASP	8.0
1	A	130	GLY	7.0
1	A	105	SER	7.0
1	A	132	VAL	7.0
1	A	86	ALA	6.9
1	A	128	GLY	6.7
1	A	89	TYR	6.4
1	A	123	ILE	6.4
1	A	131	LEU	5.8
1	A	85	GLU	5.7
1	A	88	GLU	5.5
1	A	90	TYR	5.0
1	A	110	CYS	4.9
1	A	111	GLY	4.8

Continued on next page...

Continued from previous page...

Mol	Chain	Res	Type	RSRZ
1	A	124	VAL	4.7
1	A	83	PHE	4.7
1	C	50	CYS	4.4
1	A	117	GLN	4.3
1	A	47	ALA	4.0
1	C	48	GLN	3.7
1	A	104	HIS	3.6
1	A	146	GLU	3.6
1	A	93	ARG	3.5
1	A	57	ASP	3.3
1	A	46	THR	3.3
1	C	94	TYR	3.3
1	A	82	ILE	3.2
1	A	129	ASN	3.2
1	C	46	THR	3.2
1	A	52	THR	3.1
1	A	94	TYR	3.0
1	A	81	LEU	3.0
1	A	135	ALA	2.9
1	C	128	GLY	2.9
1	C	104	HIS	2.9
1	C	82	ILE	2.9
1	A	58	CYS	2.9
1	C	7	SER	2.8
1	C	89	TYR	2.7
1	C	69	ARG	2.7
1	C	47	ALA	2.7
1	C	145	GLU	2.6
1	A	56	CYS	2.6
1	C	146	GLU	2.6
1	A	25	HIS	2.4
1	C	129	ASN	2.4
1	C	25	HIS	2.4
1	C	81	LEU	2.4
1	C	131	LEU	2.4
1	C	106	GLU	2.4
1	C	15	TYR	2.3
1	A	141	LEU	2.2
1	C	115	ARG	2.2
1	A	48	GLN	2.1
1	A	59	GLN	2.1
1	A	106	GLU	2.1

Continued on next page...

Continued from previous page...

Mol	Chain	Res	Type	RSRZ
1	C	32	VAL	2.1
1	A	100	LEU	2.1
1	C	83	PHE	2.0
1	C	28	TRP	2.0
1	C	141	LEU	2.0
1	A	116	CYS	2.0

6.2 Non-standard residues in protein, DNA, RNA chains [i](#)

There are no non-standard protein/DNA/RNA residues in this entry.

6.3 Carbohydrates [i](#)

There are no monosaccharides in this entry.

6.4 Ligands [i](#)

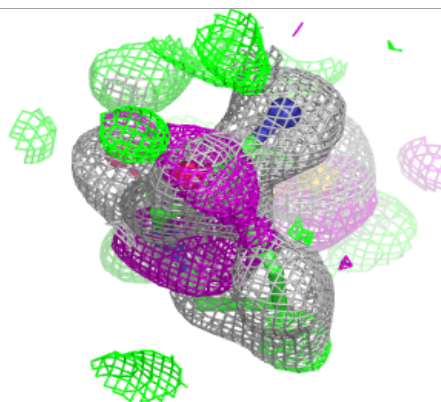
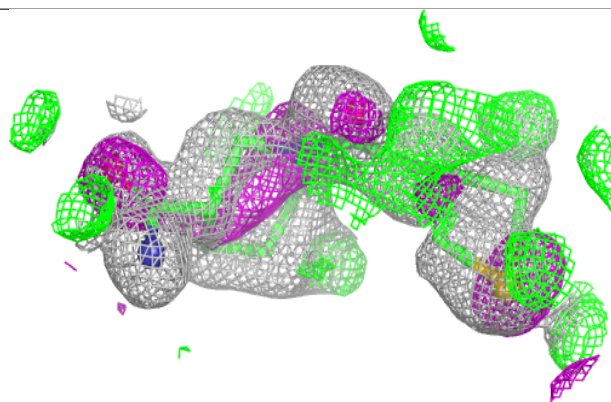
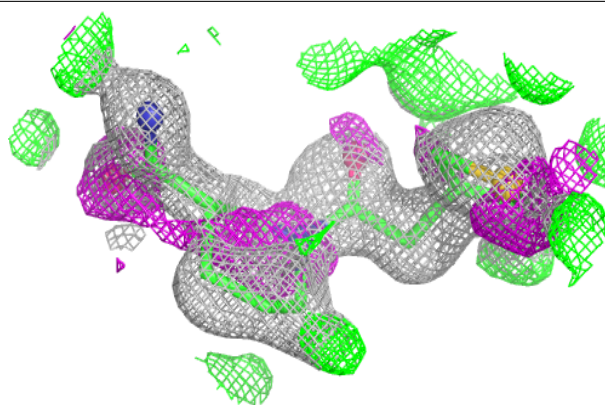
In the following table, the Atoms column lists the number of modelled atoms in the group and the number defined in the chemical component dictionary. The B-factors column lists the minimum, median, 95th percentile and maximum values of B factors of atoms in the group. The column labelled 'Q<0.9' lists the number of atoms with occupancy less than 0.9.

Mol	Type	Chain	Res	Atoms	RSCC	RSR	B-factors(\AA^2)	Q<0.9
4	DMS	C	203	4/4	0.49	0.36	93,93,93,93	0
4	DMS	C	202	4/4	0.69	0.26	54,54,54,54	0
2	A1B2V	A	201	16/16	0.78	0.18	23,29,30,31	0
3	ZN	A	202	1/1	0.91	0.10	21,21,21,21	0
3	ZN	C	201	1/1	1.00	0.02	15,15,15,15	0

The following is a graphical depiction of the model fit to experimental electron density of all instances of the Ligand of Interest. In addition, ligands with molecular weight > 250 and outliers as shown on the geometry validation Tables will also be included. Each fit is shown from different orientation to approximate a three-dimensional view.

Electron density around A1B2V A 201:

$2mF_o-DF_c$ (at 0.7 rmsd) in gray
 mF_o-DF_c (at 3 rmsd) in purple (negative)
and green (positive)



6.5 Other polymers [i](#)

There are no such residues in this entry.