



Full wwPDB X-ray Structure Validation Report ⓘ

Feb 24, 2025 – 12:14 pm GMT

PDB ID : 9I2L
Title : BtuJ2 - DUF4465 domain containing protein
Authors : Clarke, C.; Banasik, M.; Pickersgill, R.
Deposited on : 2025-01-21
Resolution : 2.73 Å(reported)

This is a Full wwPDB X-ray Structure Validation Report for a publicly released PDB entry.

We welcome your comments at validation@mail.wwpdb.org

A user guide is available at

<https://www.wwpdb.org/validation/2017/XrayValidationReportHelp>

with specific help available everywhere you see the ⓘ symbol.

The types of validation reports are described at

<http://www.wwpdb.org/validation/2017/FAQs#types>.

The following versions of software and data (see [references ⓘ](#)) were used in the production of this report:

MolProbity : 4.02b-467
Mogul : 1.8.4, CSD as541be (2020)
Xtriage (Phenix) : 1.13
EDS : 3.0
buster-report : 1.1.7 (2018)
Percentile statistics : 20231227.v01 (using entries in the PDB archive December 27th 2023)
CCP4 : 9.0.003 (Gargrove)
Density-Fitness : 1.0.11
Ideal geometry (proteins) : Engh & Huber (2001)
Ideal geometry (DNA, RNA) : Parkinson et al. (1996)
Validation Pipeline (wwPDB-VP) : 2.41

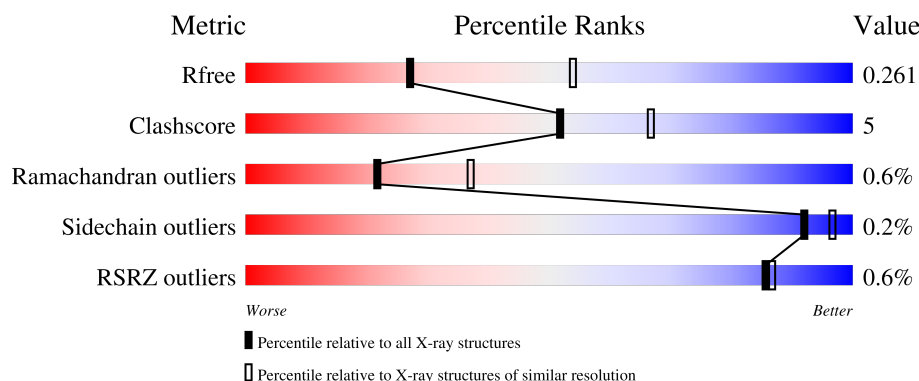
1 Overall quality at a glance

The following experimental techniques were used to determine the structure:

X-RAY DIFFRACTION



The reported resolution of this entry is 2.73 Å.

Percentile scores (ranging between 0-100) for global validation metrics of the entry are shown in the following graphic. The table shows the number of entries on which the scores are based.



Metric	Whole archive (#Entries)	Similar resolution (#Entries, resolution range(Å))
R_{free}	164625	1649 (2.76-2.72)
Clashscore	180529	1744 (2.76-2.72)
Ramachandran outliers	177936	1710 (2.76-2.72)
Sidechain outliers	177891	1711 (2.76-2.72)
RSRZ outliers	164620	1649 (2.76-2.72)

The table below summarises the geometric issues observed across the polymeric chains and their fit to the electron density. The red, orange, yellow and green segments of the lower bar indicate the fraction of residues that contain outliers for ≥ 3 , 2, 1 and 0 types of geometric quality criteria respectively. A grey segment represents the fraction of residues that are not modelled. The numeric value for each fraction is indicated below the corresponding segment, with a dot representing fractions $\leq 5\%$. The upper red bar (where present) indicates the fraction of residues that have poor fit to the electron density. The numeric value is given above the bar.

Mol	Chain	Length	Quality of chain
1	A	305	 77% 8% 15%
1	B	305	 75% 7% 16%

The following table lists non-polymeric compounds, carbohydrate monomers and non-standard residues in protein, DNA, RNA chains that are outliers for geometric or electron-density-fit criteria:

Mol	Type	Chain	Res	Chirality	Geometry	Clashes	Electron density
2	CNC	A	401	X	-	-	-
2	CNC	B	401	X	-	-	-

2 Entry composition [i](#)

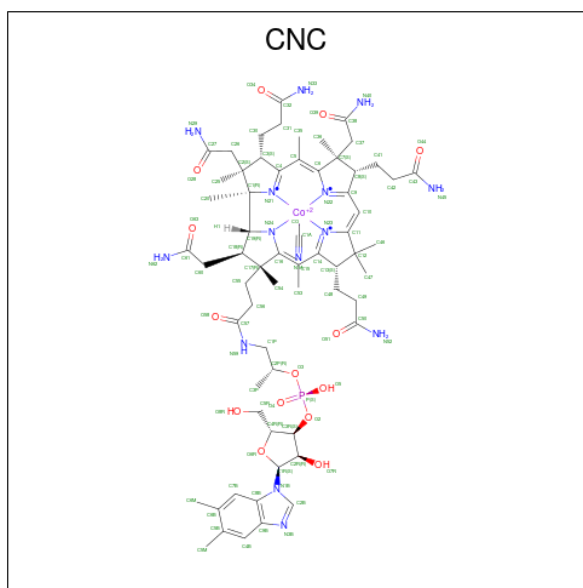
There are 4 unique types of molecules in this entry. The entry contains 8088 atoms, of which 3778 are hydrogens and 0 are deuteriums.

In the tables below, the ZeroOcc column contains the number of atoms modelled with zero occupancy, the AltConf column contains the number of residues with at least one atom in alternate conformation and the Trace column contains the number of residues modelled with at most 2 atoms.

- Molecule 1 is a protein called DUF4465 domain-containing protein.

Mol	Chain	Residues	Atoms						ZeroOcc	AltConf	Trace
1	B	256	Total	C	H	N	O	S	0	0	0
			3815	1288	1794	321	404	8			
1	A	260	Total	C	H	N	O	S	0	0	0
			3862	1303	1814	326	411	8			

- Molecule 2 is CYANOCOBALAMIN (three-letter code: CNC) (formula: $C_{63}H_{89}CoN_{14}O_{14}P$) (labeled as "Ligand of Interest" by depositor).



Mol	Chain	Residues	Atoms						ZeroOcc	AltConf
2	B	1	Total	C	Co	H	N	O	P	0
			178	63	1	85	14	14	1	
2	A	1	Total	C	Co	H	N	O	P	0
			178	63	1	85	14	14	1	

- Molecule 3 is CALCIUM ION (three-letter code: CA) (formula: Ca).

Mol	Chain	Residues	Atoms		ZeroOcc	AltConf
3	B	1	Total 1	Ca 1	0	0
3	A	1	Total 1	Ca 1	0	0

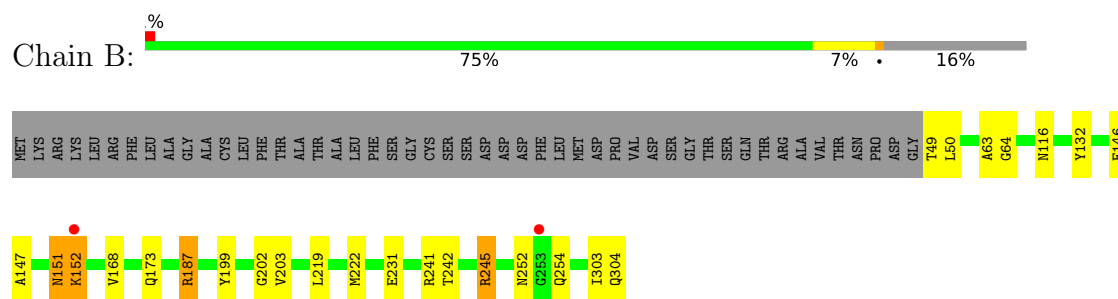
- Molecule 4 is water.

Mol	Chain	Residues	Atoms		ZeroOcc	AltConf
4	B	27	Total 27	O 27	0	0
4	A	26	Total 26	O 26	0	0

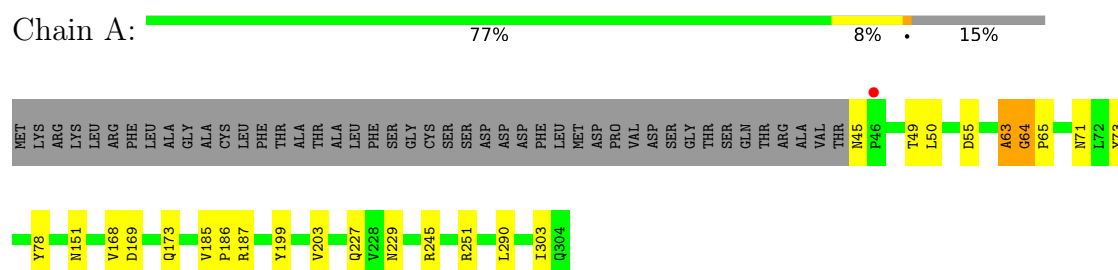
3 Residue-property plots

These plots are drawn for all protein, RNA, DNA and oligosaccharide chains in the entry. The first graphic for a chain summarises the proportions of the various outlier classes displayed in the second graphic. The second graphic shows the sequence view annotated by issues in geometry and electron density. Residues are color-coded according to the number of geometric quality criteria for which they contain at least one outlier: green = 0, yellow = 1, orange = 2 and red = 3 or more. A red dot above a residue indicates a poor fit to the electron density ($RSRZ > 2$). Stretches of 2 or more consecutive residues without any outlier are shown as a green connector. Residues present in the sample, but not in the model, are shown in grey.

- Molecule 1: DUF4465 domain-containing protein



- Molecule 1: DUF4465 domain-containing protein



4 Data and refinement statistics

Property	Value	Source
Space group	P 21 21 2	Depositor
Cell constants a, b, c, α , β , γ	83.75Å 97.98Å 70.47Å 90.00° 90.00° 90.00°	Depositor
Resolution (Å)	70.47 – 2.73 70.47 – 2.73	Depositor EDS
% Data completeness (in resolution range)	97.9 (70.47-2.73) 97.9 (70.47-2.73)	Depositor EDS
R_{merge}	0.20	Depositor
R_{sym}	(Not available)	Depositor
$\langle I/\sigma(I) \rangle$ ¹	1.56 (at 2.73Å)	Xtriage
Refinement program	REFMAC 5.8.0430 (refmacat 0.4.88)	Depositor
R, R_{free}	0.185 , 0.261 0.185 , 0.261	Depositor DCC
R_{free} test set	754 reflections (4.82%)	wwPDB-VP
Wilson B-factor (Å ²)	37.7	Xtriage
Anisotropy	0.180	Xtriage
Bulk solvent k_{sol} (e/Å ³), B_{sol} (Å ²)	0.40 , 30.0	EDS
L-test for twinning ²	$\langle L \rangle = 0.50$, $\langle L^2 \rangle = 0.33$	Xtriage
Estimated twinning fraction	No twinning to report.	Xtriage
F_o, F_c correlation	0.94	EDS
Total number of atoms	8088	wwPDB-VP
Average B, all atoms (Å ²)	39.0	wwPDB-VP

Xtriage's analysis on translational NCS is as follows: *The largest off-origin peak in the Patterson function is 5.20% of the height of the origin peak. No significant pseudotranslation is detected.*

¹Intensities estimated from amplitudes.

²Theoretical values of $\langle |L| \rangle$, $\langle L^2 \rangle$ for acentric reflections are 0.5, 0.333 respectively for untwinned datasets, and 0.375, 0.2 for perfectly twinned datasets.

5 Model quality

5.1 Standard geometry

Bond lengths and bond angles in the following residue types are not validated in this section: CNC, CA

The Z score for a bond length (or angle) is the number of standard deviations the observed value is removed from the expected value. A bond length (or angle) with $|Z| > 5$ is considered an outlier worth inspection. RMSZ is the root-mean-square of all Z scores of the bond lengths (or angles).

Mol	Chain	Bond lengths		Bond angles	
		RMSZ	# Z >5	RMSZ	# Z >5
1	A	0.59	0/2106	1.12	6/2875 (0.2%)
1	B	0.57	0/2076	1.13	9/2830 (0.3%)
All	All	0.58	0/4182	1.12	15/5705 (0.3%)

Chiral center outliers are detected by calculating the chiral volume of a chiral center and verifying if the center is modelled as a planar moiety or with the opposite hand. A planarity outlier is detected by checking planarity of atoms in a peptide group, atoms in a mainchain group or atoms of a sidechain that are expected to be planar.

Mol	Chain	#Chirality outliers	#Planarity outliers
1	A	0	1
1	B	0	2
All	All	0	3

There are no bond length outliers.

All (15) bond angle outliers are listed below:

Mol	Chain	Res	Type	Atoms	Z	Observed(°)	Ideal(°)
1	A	55	ASP	CB-CA-C	7.55	125.50	110.40
1	B	63	ALA	C-N-CA	7.27	137.56	122.30
1	A	251	ARG	NE-CZ-NH1	6.90	123.75	120.30
1	B	49	THR	CA-CB-OG1	-6.74	94.84	109.00
1	A	63	ALA	C-N-CA	6.69	136.36	122.30
1	A	251	ARG	NE-CZ-NH2	-6.63	116.99	120.30
1	B	245	ARG	NE-CZ-NH1	6.38	123.49	120.30
1	B	152	LYS	CB-CA-C	6.35	123.10	110.40
1	B	146	GLU	CB-CA-C	6.07	122.55	110.40
1	B	304	GLN	N-CA-CB	-5.81	100.15	110.60
1	A	169	ASP	CB-CG-OD2	-5.74	113.14	118.30
1	B	222	MET	CG-SD-CE	5.55	109.08	100.20

Continued on next page...

Continued from previous page...

Mol	Chain	Res	Type	Atoms	Z	Observed(°)	Ideal(°)
1	B	219	LEU	CB-CG-CD2	5.39	120.16	111.00
1	B	187	ARG	NE-CZ-NH1	5.28	122.94	120.30
1	A	50	LEU	CB-CG-CD1	5.06	119.61	111.00

There are no chirality outliers.

All (3) planarity outliers are listed below:

Mol	Chain	Res	Type	Group
1	A	245	ARG	Sidechain
1	B	241	ARG	Sidechain
1	B	245	ARG	Sidechain

5.2 Too-close contacts

In the following table, the Non-H and H(model) columns list the number of non-hydrogen atoms and hydrogen atoms in the chain respectively. The H(added) column lists the number of hydrogen atoms added and optimized by MolProbity. The Clashes column lists the number of clashes within the asymmetric unit, whereas Symm-Clashes lists symmetry-related clashes.

Mol	Chain	Non-H	H(model)	H(added)	Clashes	Symm-Clashes
1	A	2048	1814	1879	11	0
1	B	2021	1794	1857	11	0
2	A	93	85	86	11	0
2	B	93	85	87	10	0
3	A	1	0	0	0	0
3	B	1	0	0	0	0
4	A	26	0	0	0	0
4	B	27	0	0	0	0
All	All	4310	3778	3909	41	0

The all-atom clashscore is defined as the number of clashes found per 1000 atoms (including hydrogen atoms). The all-atom clashscore for this structure is 5.

All (41) close contacts within the same asymmetric unit are listed below, sorted by their clash magnitude.

Atom-1	Atom-2	Interatomic distance (Å)	Clash overlap (Å)
2:A:401:CNC:H362	2:A:401:CNC:H351	1.48	0.95
2:B:401:CNC:H351	2:B:401:CNC:H362	1.52	0.90
2:A:401:CNC:H531	2:A:401:CNC:H552	1.63	0.80

Continued on next page...

Continued from previous page...

Atom-1	Atom-2	Interatomic distance (Å)	Clash overlap (Å)
2:B:401:CNC:H1P2	2:B:401:CNC:O4	1.83	0.77
1:A:227:GLN:HE21	1:A:229:ASN:HD21	1.44	0.65
2:B:401:CNC:H2B	2:B:401:CNC:H482	1.80	0.63
2:B:401:CNC:H533	2:B:401:CNC:H492	1.82	0.60
1:A:185:VAL:HB	1:A:186:PRO:HD2	1.84	0.59
2:B:401:CNC:H552	2:B:401:CNC:H531	1.85	0.58
1:B:147:ALA:HB3	1:B:152:LYS:HE2	1.85	0.57
1:A:187:ARG:HD3	1:A:303:ILE:HD12	1.87	0.56
1:B:199:TYR:O	1:B:203:VAL:HG23	2.06	0.56
1:B:168:VAL:HG13	1:B:173:GLN:HA	1.88	0.56
2:A:401:CNC:H492	2:A:401:CNC:H533	1.88	0.55
1:A:45:ASN:HB2	1:A:49:THR:OG1	2.06	0.55
2:A:401:CNC:H351	2:A:401:CNC:C36	2.27	0.54
2:B:401:CNC:O4	2:B:401:CNC:C1P	2.55	0.54
1:B:187:ARG:HD3	1:B:303:ILE:HD12	1.90	0.52
2:A:401:CNC:H203	2:A:401:CNC:H301	1.92	0.52
1:A:290:LEU:O	2:A:401:CNC:N29	2.41	0.51
2:A:401:CNC:H531	2:A:401:CNC:C55	2.38	0.51
1:A:65:PRO:HG3	1:A:78:TYR:CE2	2.47	0.50
1:A:73:TYR:OH	2:A:401:CNC:N40	2.45	0.50
2:B:401:CNC:H533	2:B:401:CNC:C49	2.43	0.49
2:B:401:CNC:O7R	2:B:401:CNC:H3P2	2.13	0.48
1:A:168:VAL:HG13	1:A:173:GLN:HA	1.96	0.48
2:A:401:CNC:H353	2:A:401:CNC:H302	1.95	0.47
1:A:199:TYR:O	1:A:203:VAL:HG23	2.15	0.46
1:B:147:ALA:HB3	1:B:152:LYS:CE	2.46	0.46
2:B:401:CNC:H351	2:B:401:CNC:C36	2.30	0.45
2:A:401:CNC:H202	2:A:401:CNC:N3B	2.32	0.45
2:A:401:CNC:H463	2:A:401:CNC:H481	1.87	0.44
1:A:64:GLY:N	1:A:71:ASN:OD1	2.44	0.43
2:B:401:CNC:H531	2:B:401:CNC:C55	2.48	0.42
1:B:152:LYS:HA	1:B:152:LYS:HD2	1.83	0.42
1:A:63:ALA:O	1:A:64:GLY:O	2.37	0.42
1:B:132:TYR:CB	1:B:202:GLY:HA3	2.50	0.41
1:B:231:GLU:HG2	1:B:242:THR:HG23	2.02	0.41
1:B:252:ASN:O	1:B:254:GLN:N	2.54	0.41
1:B:116:ASN:ND2	1:B:151:ASN:HD22	2.17	0.41
1:B:50:LEU:HB2	1:B:303:ILE:HG13	2.02	0.41

There are no symmetry-related clashes.

5.3 Torsion angles

5.3.1 Protein backbone

In the following table, the Percentiles column shows the percent Ramachandran outliers of the chain as a percentile score with respect to all X-ray entries followed by that with respect to entries of similar resolution.

The Analysed column shows the number of residues for which the backbone conformation was analysed, and the total number of residues.

Mol	Chain	Analysed	Favoured	Allowed	Outliers	Percentiles	
1	A	258/305 (85%)	243 (94%)	14 (5%)	1 (0%)	30	48
1	B	251/305 (82%)	238 (95%)	11 (4%)	2 (1%)	16	30
All	All	509/610 (83%)	481 (94%)	25 (5%)	3 (1%)	22	37

All (3) Ramachandran outliers are listed below:

Mol	Chain	Res	Type
1	B	64	GLY
1	A	64	GLY
1	B	151	ASN

5.3.2 Protein sidechains

In the following table, the Percentiles column shows the percent sidechain outliers of the chain as a percentile score with respect to all X-ray entries followed by that with respect to entries of similar resolution.

The Analysed column shows the number of residues for which the sidechain conformation was analysed, and the total number of residues.

Mol	Chain	Analysed	Rotameric	Outliers	Percentiles	
1	A	217/254 (85%)	216 (100%)	1 (0%)	86	92
1	B	214/254 (84%)	214 (100%)	0	100	100
All	All	431/508 (85%)	430 (100%)	1 (0%)	92	96

All (1) residues with a non-rotameric sidechain are listed below:

Mol	Chain	Res	Type
1	A	151	ASN

Sometimes sidechains can be flipped to improve hydrogen bonding and reduce clashes. All (8) such

sidechains are listed below:

Mol	Chain	Res	Type
1	B	99	ASN
1	B	151	ASN
1	B	227	GLN
1	B	229	ASN
1	A	99	ASN
1	A	150	GLN
1	A	229	ASN
1	A	291	ASN

5.3.3 RNA [i](#)

There are no RNA molecules in this entry.

5.4 Non-standard residues in protein, DNA, RNA chains [i](#)

There are no non-standard protein/DNA/RNA residues in this entry.

5.5 Carbohydrates [i](#)

There are no oligosaccharides in this entry.

5.6 Ligand geometry [i](#)

Of 4 ligands modelled in this entry, 2 are monoatomic - leaving 2 for Mogul analysis.

In the following table, the Counts columns list the number of bonds (or angles) for which Mogul statistics could be retrieved, the number of bonds (or angles) that are observed in the model and the number of bonds (or angles) that are defined in the Chemical Component Dictionary. The Link column lists molecule types, if any, to which the group is linked. The Z score for a bond length (or angle) is the number of standard deviations the observed value is removed from the expected value. A bond length (or angle) with $|Z| > 2$ is considered an outlier worth inspection. RMSZ is the root-mean-square of all Z scores of the bond lengths (or angles).

Mol	Type	Chain	Res	Link	Bond lengths			Bond angles		
					Counts	RMSZ	$\# Z > 2$	Counts	RMSZ	$\# Z > 2$
2	CNC	A	401	-	90,103,103	1.59	10 (11%)	139,171,171	1.89	28 (20%)
2	CNC	B	401	-	90,103,103	1.81	13 (14%)	139,171,171	1.83	27 (19%)

In the following table, the Chirals column lists the number of chiral outliers, the number of chiral centers analysed, the number of these observed in the model and the number defined in the

Chemical Component Dictionary. Similar counts are reported in the Torsion and Rings columns.
'-' means no outliers of that kind were identified.

Mol	Type	Chain	Res	Link	Chirals	Torsions	Rings
2	CNC	A	401	-	1/1/38/38	8/52/235/235	0/3/11/11
2	CNC	B	401	-	1/1/38/38	17/52/235/235	0/3/11/11

All (23) bond length outliers are listed below:

Mol	Chain	Res	Type	Atoms	Z	Observed(Å)	Ideal(Å)
2	B	401	CNC	C19-N24	-11.28	1.25	1.49
2	A	401	CNC	C19-N24	-8.84	1.30	1.49
2	B	401	CNC	C1P-C2P	5.37	1.65	1.51
2	A	401	CNC	C4B-C9B	-4.83	1.34	1.41
2	B	401	CNC	C6B-C5B	4.32	1.51	1.40
2	B	401	CNC	C8B-C9B	3.73	1.48	1.40
2	A	401	CNC	C7B-C8B	-3.07	1.34	1.40
2	B	401	CNC	C7B-C6B	2.95	1.45	1.37
2	A	401	CNC	C18-C19	-2.83	1.48	1.54
2	A	401	CNC	C8B-C9B	2.72	1.46	1.40
2	A	401	CNC	C43-N45	2.70	1.41	1.32
2	B	401	CNC	C30-C3	2.63	1.60	1.54
2	A	401	CNC	C1-C2	-2.51	1.53	1.58
2	A	401	CNC	C10-C9	2.50	1.46	1.39
2	B	401	CNC	C4B-C9B	-2.44	1.38	1.41
2	A	401	CNC	C6B-C5B	2.43	1.47	1.40
2	A	401	CNC	C25-C2	2.35	1.58	1.54
2	B	401	CNC	O34-C32	-2.25	1.17	1.24
2	B	401	CNC	O58-C57	-2.13	1.18	1.23
2	B	401	CNC	C61-N62	2.10	1.39	1.32
2	B	401	CNC	C1-C19	-2.04	1.49	1.54
2	B	401	CNC	C9-N22	-2.02	1.24	1.30
2	B	401	CNC	C2-C3	-2.01	1.51	1.57

All (55) bond angle outliers are listed below:

Mol	Chain	Res	Type	Atoms	Z	Observed(°)	Ideal(°)
2	B	401	CNC	C18-C19-N24	7.56	113.89	101.88
2	A	401	CNC	C1-C19-N24	7.41	118.06	106.33
2	B	401	CNC	O3-C2P-C1P	6.89	120.66	106.92
2	B	401	CNC	C20-C1-C19	-6.55	97.09	110.23
2	A	401	CNC	C2-C1-C19	5.57	128.28	118.72
2	B	401	CNC	C2-C1-C19	5.48	128.11	118.72
2	A	401	CNC	C18-C19-N24	5.42	110.49	101.88

Continued on next page...

Continued from previous page...

Mol	Chain	Res	Type	Atoms	Z	Observed(°)	Ideal(°)
2	A	401	CNC	C56-C55-C17	5.27	125.68	115.52
2	B	401	CNC	C1-C19-C18	4.95	129.13	121.81
2	A	401	CNC	C4B-C9B-C8B	-4.74	116.25	121.10
2	A	401	CNC	C47-C12-C46	-4.47	101.80	109.35
2	A	401	CNC	C1-C19-C18	4.33	128.21	121.81
2	B	401	CNC	C1-C19-N24	4.28	113.11	106.33
2	B	401	CNC	C3P-C2P-C1P	3.94	119.04	111.39
2	A	401	CNC	C20-C1-C19	-3.60	103.02	110.23
2	B	401	CNC	C48-C13-C14	-3.44	101.61	109.63
2	A	401	CNC	C13-C12-C11	-3.43	96.23	100.90
2	B	401	CNC	C4B-C9B-C8B	-3.41	117.61	121.10
2	A	401	CNC	O63-C61-C60	3.35	127.93	120.87
2	B	401	CNC	C12-C11-N23	3.06	114.80	111.48
2	A	401	CNC	C37-C7-C8	3.01	116.47	108.39
2	A	401	CNC	O44-C43-C42	-2.93	112.45	121.07
2	A	401	CNC	C8-C9-N22	2.90	116.55	110.77
2	A	401	CNC	C36-C7-C37	-2.83	106.14	110.80
2	B	401	CNC	C13-C12-C11	-2.77	97.12	100.90
2	B	401	CNC	C8-C9-N22	2.77	116.29	110.77
2	B	401	CNC	C56-C55-C17	2.70	120.71	115.52
2	A	401	CNC	O7R-C2R-C3R	-2.69	103.53	111.17
2	B	401	CNC	O5-P-O4	2.65	125.32	112.24
2	A	401	CNC	C60-C18-C19	2.61	120.31	114.09
2	A	401	CNC	C25-C2-C26	2.57	114.91	109.71
2	A	401	CNC	C7B-C6B-C5B	-2.57	115.58	119.91
2	B	401	CNC	C8-C9-C10	-2.49	117.95	123.32
2	B	401	CNC	C41-C8-C7	2.46	120.92	114.14
2	B	401	CNC	C5B-C4B-C9B	2.42	124.64	121.22
2	B	401	CNC	C60-C18-C19	2.42	119.85	114.09
2	B	401	CNC	C26-C2-C1	2.41	113.75	110.01
2	A	401	CNC	C30-C3-C4	2.40	115.22	109.63
2	A	401	CNC	C12-C11-C10	-2.39	121.36	123.54
2	A	401	CNC	C12-C11-N23	2.37	114.05	111.48
2	A	401	CNC	C8-C9-C10	-2.37	118.21	123.32
2	B	401	CNC	O63-C61-C60	-2.34	115.93	120.87
2	A	401	CNC	C7-C8-C9	-2.32	97.94	100.90
2	A	401	CNC	O5-P-O4	2.32	123.69	112.24
2	A	401	CNC	O51-C50-C49	-2.31	114.27	121.07
2	B	401	CNC	C7-C6-C5	-2.29	124.46	128.07
2	B	401	CNC	O51-C50-C49	-2.28	114.38	121.07
2	B	401	CNC	C49-C50-N52	2.25	123.53	116.51
2	B	401	CNC	C3R-C2R-C1R	2.25	104.88	99.89

Continued on next page...

Continued from previous page...

Mol	Chain	Res	Type	Atoms	Z	Observed(°)	Ideal(°)
2	B	401	CNC	P-O2-C3R	2.20	127.40	119.41
2	A	401	CNC	C8-C7-C6	-2.19	97.17	100.92
2	A	401	CNC	C3P-C2P-C1P	2.12	115.50	111.39
2	B	401	CNC	C19-C1-N21	2.06	104.29	101.67
2	B	401	CNC	C7B-C6B-C5B	-2.04	116.47	119.91
2	A	401	CNC	C7-C6-N22	2.04	111.66	107.94

All (2) chirality outliers are listed below:

Mol	Chain	Res	Type	Atom
2	B	401	CNC	N24
2	A	401	CNC	N24

All (25) torsion outliers are listed below:

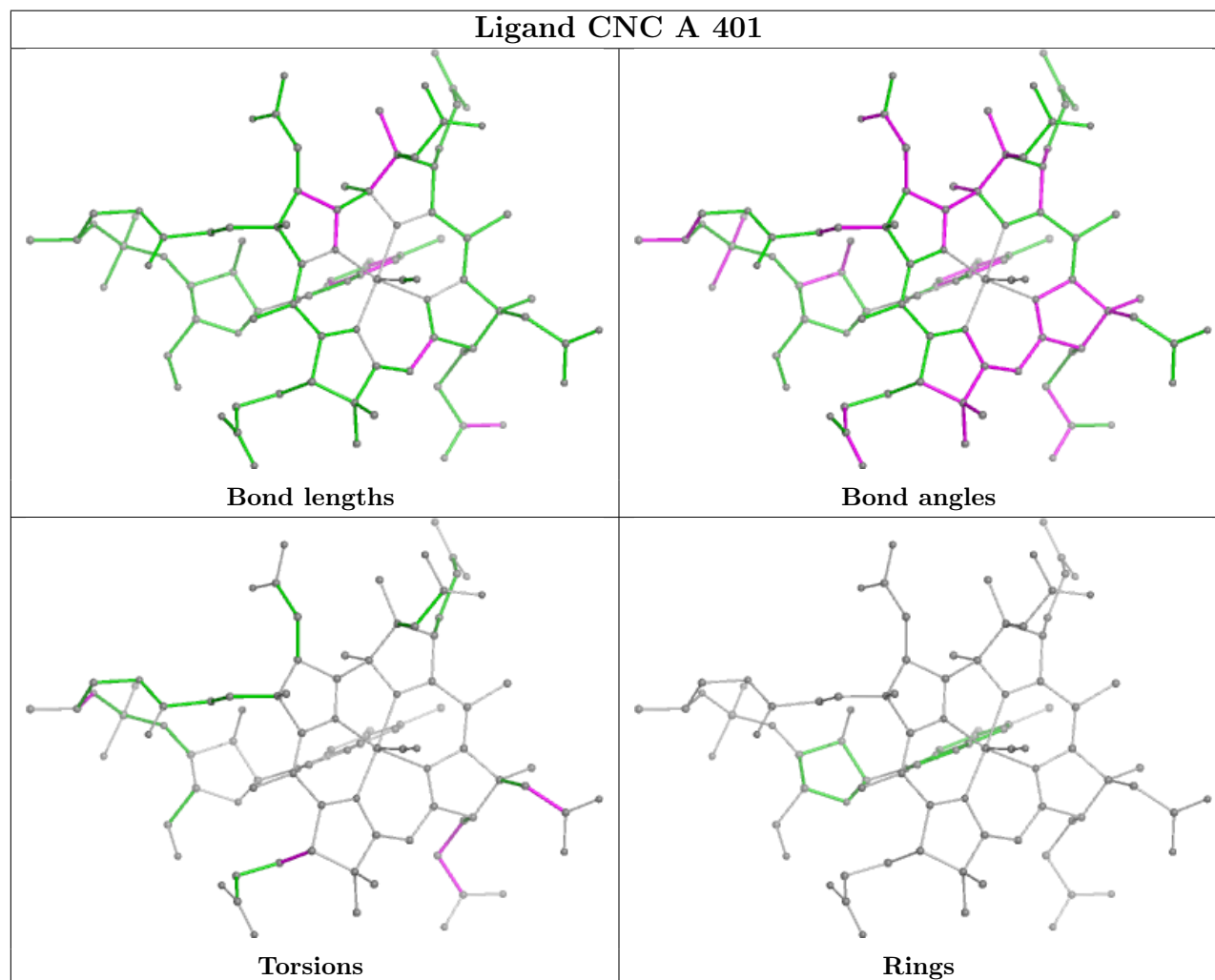
Mol	Chain	Res	Type	Atoms
2	B	401	CNC	C12-C13-C48-C49
2	B	401	CNC	C14-C13-C48-C49
2	B	401	CNC	C56-C57-N59-C1P
2	B	401	CNC	N59-C1P-C2P-C3P
2	B	401	CNC	N59-C1P-C2P-O3
2	B	401	CNC	C1P-C2P-O3-P
2	B	401	CNC	C3P-C2P-O3-P
2	B	401	CNC	C3R-O2-P-O5
2	A	401	CNC	C12-C13-C48-C49
2	A	401	CNC	C14-C13-C48-C49
2	B	401	CNC	O58-C57-N59-C1P
2	A	401	CNC	C7-C37-C38-O39
2	A	401	CNC	C7-C37-C38-N40
2	B	401	CNC	C13-C48-C49-C50
2	B	401	CNC	C3R-O2-P-O3
2	A	401	CNC	C41-C42-C43-O44
2	A	401	CNC	C41-C42-C43-N45
2	B	401	CNC	C3R-O2-P-O4
2	B	401	CNC	C17-C18-C60-C61
2	B	401	CNC	C42-C41-C8-C9
2	A	401	CNC	C8-C41-C42-C43
2	A	401	CNC	C1P-C2P-O3-P
2	B	401	CNC	C48-C49-C50-N52
2	B	401	CNC	C48-C49-C50-O51
2	B	401	CNC	C19-C18-C60-C61

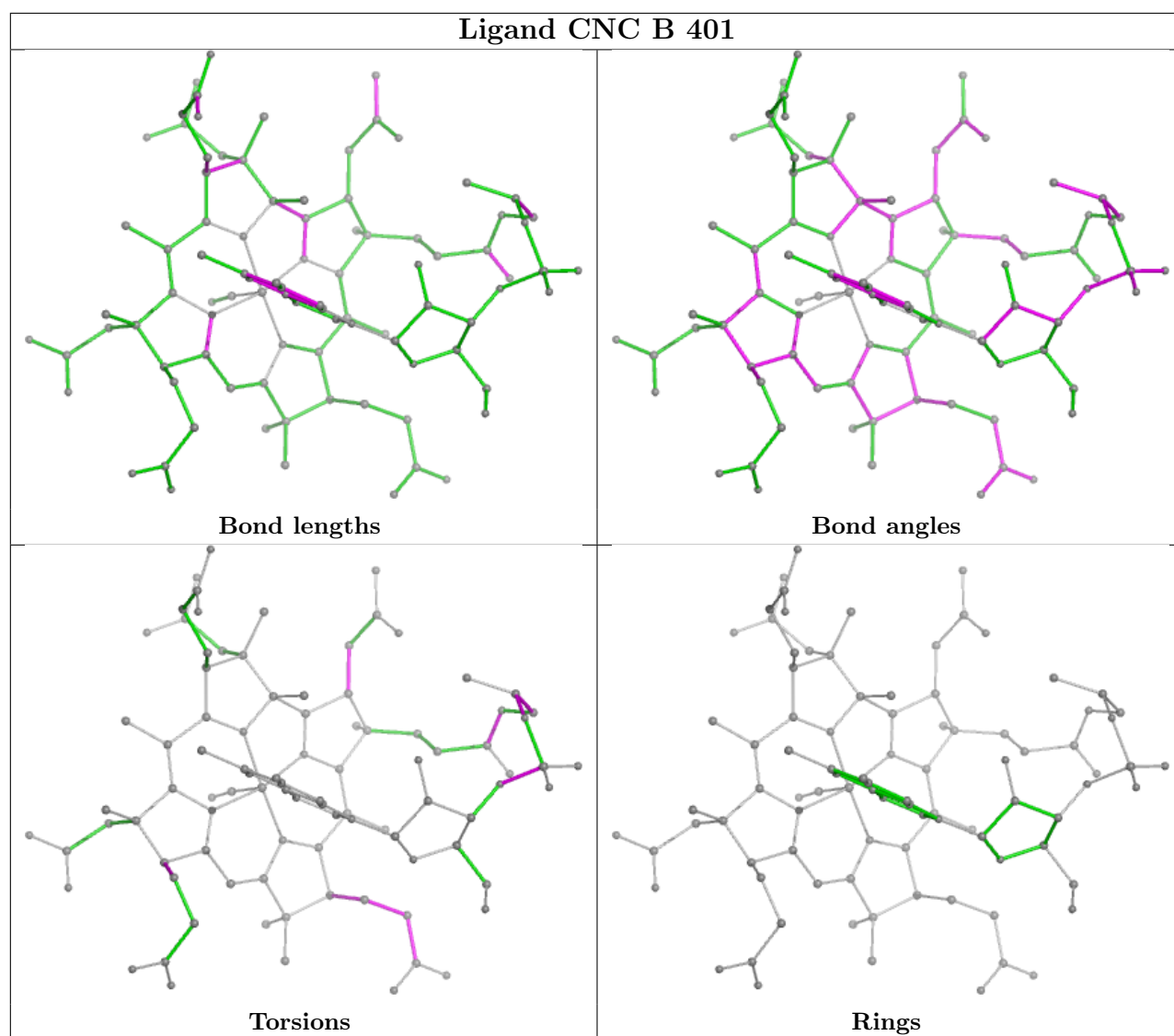
There are no ring outliers.

2 monomers are involved in 21 short contacts:

Mol	Chain	Res	Type	Clashes	Symm-Clashes
2	A	401	CNC	11	0
2	B	401	CNC	10	0

The following is a two-dimensional graphical depiction of Mogul quality analysis of bond lengths, bond angles, torsion angles, and ring geometry for all instances of the Ligand of Interest. In addition, ligands with molecular weight > 250 and outliers as shown on the validation Tables will also be included. For torsion angles, if less than 5% of the Mogul distribution of torsion angles is within 10 degrees of the torsion angle in question, then that torsion angle is considered an outlier. Any bond that is central to one or more torsion angles identified as an outlier by Mogul will be highlighted in the graph. For rings, the root-mean-square deviation (RMSD) between the ring in question and similar rings identified by Mogul is calculated over all ring torsion angles. If the average RMSD is greater than 60 degrees and the minimal RMSD between the ring in question and any Mogul-identified rings is also greater than 60 degrees, then that ring is considered an outlier. The outliers are highlighted in purple. The color gray indicates Mogul did not find sufficient equivalents in the CSD to analyse the geometry.





5.7 Other polymers [i](#)

There are no such residues in this entry.

5.8 Polymer linkage issues [i](#)

The following chains have linkage breaks:

Mol	Chain	Number of breaks
1	B	2

All chain breaks are listed below:

Model	Chain	Residue-1	Atom-1	Residue-2	Atom-2	Distance (Å)
1	B	252:ASN	C	253:GLY	N	5.43
1	B	253:GLY	C	254:GLN	N	4.66

6 Fit of model and data [i](#)

6.1 Protein, DNA and RNA chains [i](#)

In the following table, the column labelled ‘#RSRZ > 2’ contains the number (and percentage) of RSRZ outliers, followed by percent RSRZ outliers for the chain as percentile scores relative to all X-ray entries and entries of similar resolution. The OWAB column contains the minimum, median, 95th percentile and maximum values of the occupancy-weighted average B-factor per residue. The column labelled ‘Q < 0.9’ lists the number of (and percentage) of residues with an average occupancy less than 0.9.

Mol	Chain	Analysed	<RSRZ>	#RSRZ>2	OWAB(Å ²)	Q<0.9
1	A	260/305 (85%)	-0.64	1 (0%) 89 90	23, 34, 63, 111	0
1	B	256/305 (83%)	-0.51	2 (0%) 82 84	22, 38, 61, 91	0
All	All	516/610 (84%)	-0.57	3 (0%) 85 87	22, 36, 62, 111	0

All (3) RSRZ outliers are listed below:

Mol	Chain	Res	Type	RSRZ
1	B	253	GLY	5.1
1	A	46	PRO	3.0
1	B	152	LYS	2.5

6.2 Non-standard residues in protein, DNA, RNA chains [i](#)

There are no non-standard protein/DNA/RNA residues in this entry.

6.3 Carbohydrates [i](#)

There are no monosaccharides in this entry.

6.4 Ligands [i](#)

In the following table, the Atoms column lists the number of modelled atoms in the group and the number defined in the chemical component dictionary. The B-factors column lists the minimum, median, 95th percentile and maximum values of B factors of atoms in the group. The column labelled ‘Q < 0.9’ lists the number of atoms with occupancy less than 0.9.

Mol	Type	Chain	Res	Atoms	RSCC	RSR	B-factors(Å ²)	Q<0.9
3	CA	A	402	1/1	0.94	0.06	54,54,54,54	0
2	CNC	B	401	93/93	0.96	0.08	24,39,69,85	0

Continued on next page...

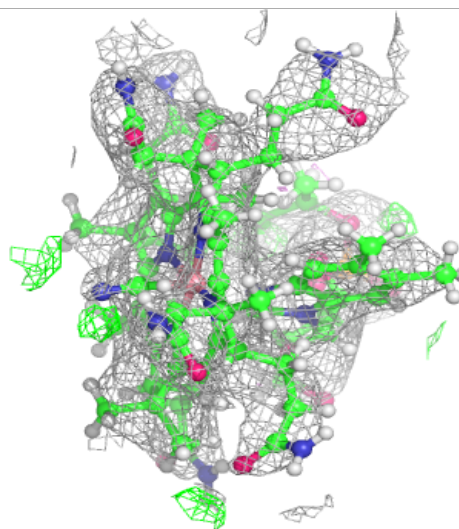
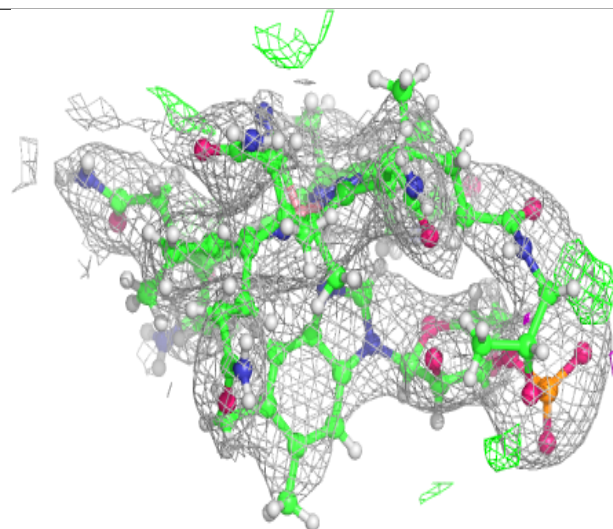
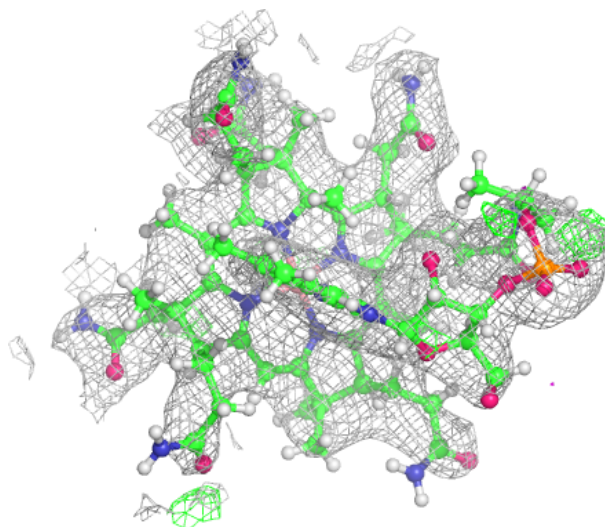
Continued from previous page...

Mol	Type	Chain	Res	Atoms	RSCC	RSR	B-factors(\AA^2)	Q<0.9
2	CNC	A	401	93/93	0.98	0.06	24,30,51,72	0
3	CA	B	402	1/1	0.99	0.02	34,34,34,34	0

The following is a graphical depiction of the model fit to experimental electron density of all instances of the Ligand of Interest. In addition, ligands with molecular weight > 250 and outliers as shown on the geometry validation Tables will also be included. Each fit is shown from different orientation to approximate a three-dimensional view.

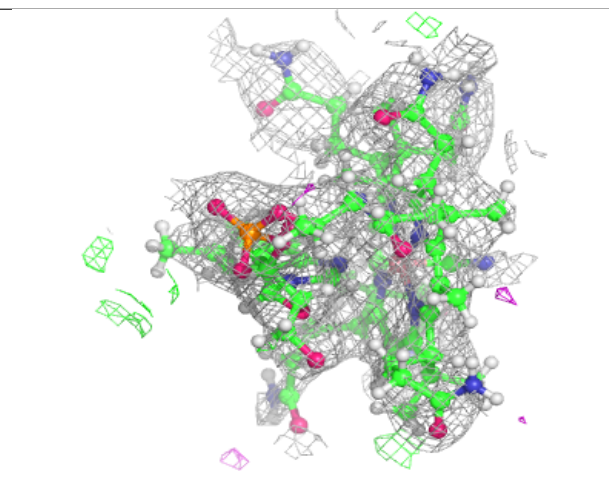
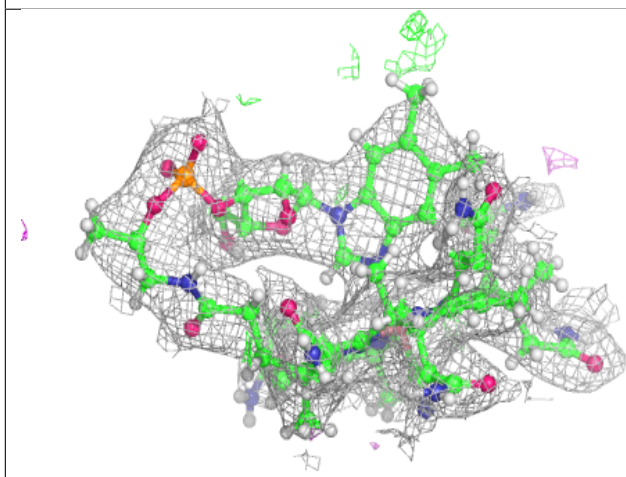
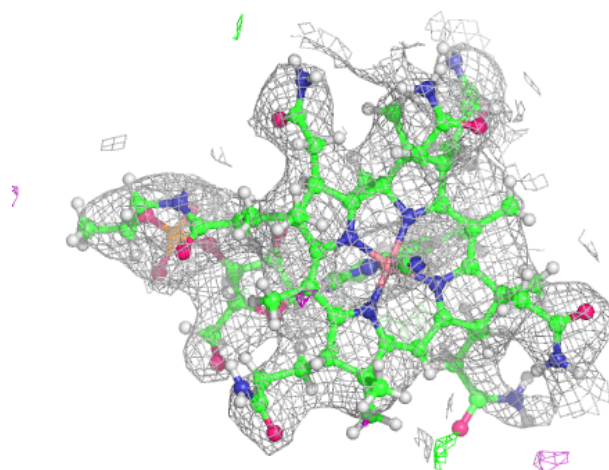
Electron density around CNC B 401:

2mF_o-DF_c (at 0.7 rmsd) in gray
mF_o-DF_c (at 3 rmsd) in purple (negative)
and green (positive)



Electron density around CNC A 401:

$2mF_o-DF_c$ (at 0.7 rmsd) in gray
 mF_o-DF_c (at 3 rmsd) in purple (negative)
and green (positive)



6.5 Other polymers [i](#)

There are no such residues in this entry.