



# wwPDB X-ray Structure Validation Summary Report ⓘ

Jun 22, 2024 – 07:31 PM EDT

PDB ID : 6HYT  
Title : Crystal structure of DHX8 helicase domain bound to ADP at 2.3 Angstrom  
Authors : Felisberto-Rodrigues, C.; Thomas, J.C.; McAndrew, P.C.; Le Bihan, Y.V.;  
Burke, R.; Workman, P.; van Montfort, R.L.M.  
Deposited on : 2018-10-22  
Resolution : 2.33 Å(reported)

This is a wwPDB X-ray Structure Validation Summary Report for a publicly released PDB entry.

We welcome your comments at [validation@mail.wwpdb.org](mailto:validation@mail.wwpdb.org)

A user guide is available at

<https://www.wwpdb.org/validation/2017/XrayValidationReportHelp>

with specific help available everywhere you see the ⓘ symbol.

The types of validation reports are described at

<http://www.wwpdb.org/validation/2017/FAQs#types>.

---

The following versions of software and data (see [references ⓘ](#)) were used in the production of this report:

MolProbity	:	4.02b-467
Mogul	:	2022.3.0, CSD as543be (2022)
Xtriage (Phenix)	:	1.20.1
EDS	:	2.37.1
buster-report	:	1.1.7 (2018)
Percentile statistics	:	20191225.v01 (using entries in the PDB archive December 25th 2019)
Refmac	:	5.8.0158
CCP4	:	7.0.044 (Gargrove)
Ideal geometry (proteins)	:	Engh & Huber (2001)
Ideal geometry (DNA, RNA)	:	Parkinson et al. (1996)
Validation Pipeline (wwPDB-VP)	:	2.37.1

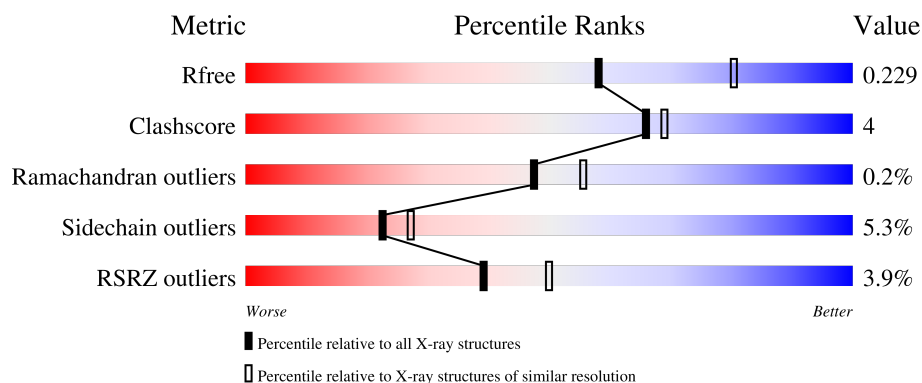
# 1 Overall quality at a glance

The following experimental techniques were used to determine the structure:

*X-RAY DIFFRACTION*

The reported resolution of this entry is 2.33 Å.

Percentile scores (ranging between 0-100) for global validation metrics of the entry are shown in the following graphic. The table shows the number of entries on which the scores are based.



Metric	Whole archive (#Entries)	Similar resolution (#Entries, resolution range(Å))
$R_{free}$	130704	2096 (2.36-2.32)
Clashscore	141614	2193 (2.36-2.32)
Ramachandran outliers	138981	2159 (2.36-2.32)
Sidechain outliers	138945	2160 (2.36-2.32)
RSRZ outliers	127900	2067 (2.36-2.32)

The table below summarises the geometric issues observed across the polymeric chains and their fit to the electron density. The red, orange, yellow and green segments of the lower bar indicate the fraction of residues that contain outliers for  $\geq 3$ , 2, 1 and 0 types of geometric quality criteria respectively. A grey segment represents the fraction of residues that are not modelled. The numeric value for each fraction is indicated below the corresponding segment, with a dot representing fractions  $\leq 5\%$ . The upper red bar (where present) indicates the fraction of residues that have poor fit to the electron density. The numeric value is given above the bar.

Mol	Chain	Length	Quality of chain
1	A	673	<div> <div>3%</div> <div>80% 13% 6%</div> </div>
1	B	673	<div> <div>3%</div> <div>82% 10% 6%</div> </div>
1	C	673	<div> <div>5%</div> <div>83% 10% 6%</div> </div>
1	D	673	<div> <div>3%</div> <div>84% 9% 6%</div> </div>

## 2 Entry composition [i](#)

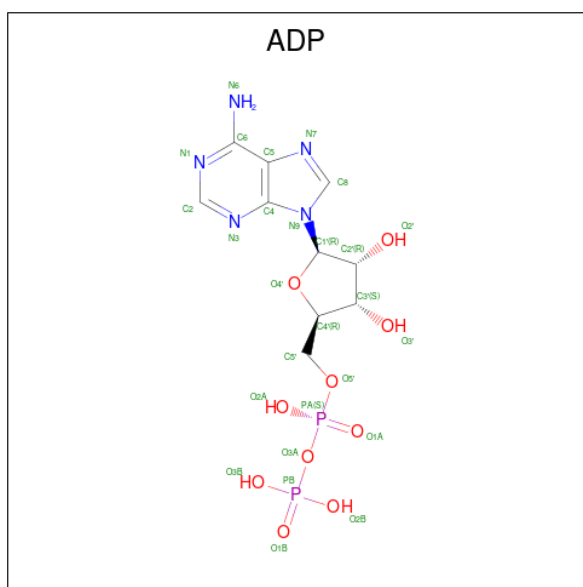
There are 8 unique types of molecules in this entry. The entry contains 20220 atoms, of which 0 are hydrogens and 0 are deuteriums.

In the tables below, the ZeroOcc column contains the number of atoms modelled with zero occupancy, the AltConf column contains the number of residues with at least one atom in alternate conformation and the Trace column contains the number of residues modelled with at most 2 atoms.

- Molecule 1 is a protein called ATP-dependent RNA helicase DHX8.

Mol	Chain	Residues	Atoms					ZeroOcc	AltConf	Trace
1	A	632	Total	C	N	O	S	0	4	0
			4914	3146	821	912	35			
1	B	634	Total	C	N	O	S	0	4	0
			4858	3113	817	893	35			
1	C	633	Total	C	N	O	S	0	1	1
			4779	3064	789	893	33			
1	D	631	Total	C	N	O	S	0	2	1
			4808	3078	791	905	34			

- Molecule 2 is ADENOSINE-5'-DIPHOSPHATE (three-letter code: ADP) (formula:  $C_{10}H_{15}N_5O_{10}P_2$ ).



Mol	Chain	Residues	Atoms					ZeroOcc	AltConf
2	A	1	Total	C	N	O	P	0	0
			27	10	5	10	2		
2	B	1	Total	C	N	O	P	0	0
			27	10	5	10	2		

*Continued on next page...*

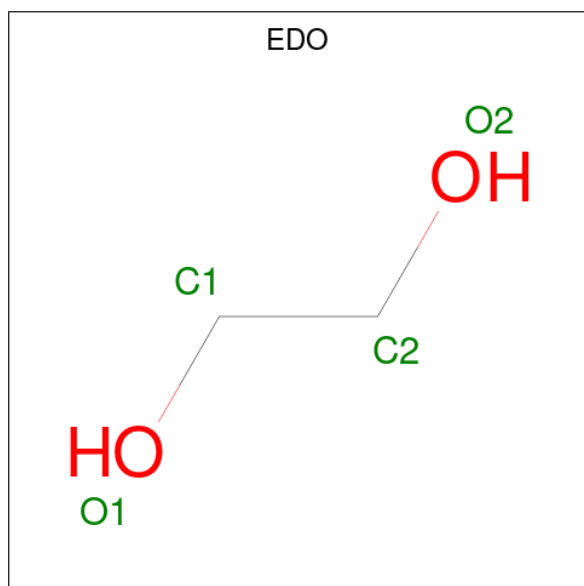
Continued from previous page...

Mol	Chain	Residues	Atoms					ZeroOcc	AltConf
2	C	1	Total	C	N	O	P	0	0
			27	10	5	10	2		
2	D	1	Total	C	N	O	P	0	1
			46	20	10	14	2		

- Molecule 3 is MAGNESIUM ION (three-letter code: MG) (formula: Mg).

Mol	Chain	Residues	Atoms		ZeroOcc	AltConf
3	A	1	Total	Mg	0	0
			1	1		
3	B	1	Total	Mg	0	0
			1	1		
3	C	1	Total	Mg	0	0
			1	1		
3	D	1	Total	Mg	0	0
			1	1		

- Molecule 4 is 1,2-ETHANEDIOL (three-letter code: EDO) (formula: C<sub>2</sub>H<sub>6</sub>O<sub>2</sub>).



Mol	Chain	Residues	Atoms			ZeroOcc	AltConf
4	A	1	Total	C	O	0	0
			4	2	2		
4	A	1	Total	C	O	0	0
			4	2	2		
4	A	1	Total	C	O	0	0
			4	2	2		

Continued on next page...

*Continued from previous page...*

Mol	Chain	Residues	Atoms			ZeroOcc	AltConf
4	B	1	Total	C	O	0	0
			4	2	2		
4	B	1	Total	C	O	0	0
			4	2	2		
4	B	1	Total	C	O	0	0
			4	2	2		
4	C	1	Total	C	O	0	0
			4	2	2		
4	C	1	Total	C	O	0	0
			4	2	2		
4	D	1	Total	C	O	0	0
			4	2	2		
4	D	1	Total	C	O	0	0
			4	2	2		

- Molecule 5 is DIMETHYL SULFOXIDE (three-letter code: DMS) (formula: C<sub>2</sub>H<sub>6</sub>OS).



Mol	Chain	Residues	Atoms				ZeroOcc	AltConf
5	A	1	Total	C	O	S	0	0
			4	2	1	1		
5	A	1	Total	C	O	S	0	0
			4	2	1	1		
5	A	1	Total	C	O	S	0	0
			4	2	1	1		
5	B	1	Total	C	O	S	0	0
			4	2	1	1		

*Continued on next page...*

*Continued from previous page...*

Mol	Chain	Residues	Atoms				ZeroOcc	AltConf
5	B	1	Total 4	C 2	O 1	S 1	0	0
5	B	1	Total 4	C 2	O 1	S 1	0	0
5	B	1	Total 4	C 2	O 1	S 1	0	0
5	B	1	Total 4	C 2	O 1	S 1	0	0
5	B	1	Total 4	C 2	O 1	S 1	0	0
5	B	1	Total 4	C 2	O 1	S 1	0	0
5	C	1	Total 4	C 2	O 1	S 1	0	0
5	C	1	Total 4	C 2	O 1	S 1	0	0
5	C	1	Total 4	C 2	O 1	S 1	0	0
5	C	1	Total 4	C 2	O 1	S 1	0	0
5	D	1	Total 4	C 2	O 1	S 1	0	0
5	D	1	Total 4	C 2	O 1	S 1	0	0
5	D	1	Total 4	C 2	O 1	S 1	0	0
5	D	1	Total 4	C 2	O 1	S 1	0	0

- Molecule 6 is ACETATE ION (three-letter code: ACT) (formula: C<sub>2</sub>H<sub>3</sub>O<sub>2</sub>).



Mol	Chain	Residues	Atoms			ZeroOcc	AltConf
6	A	1	Total	C	O	0	0
			4	2	2		
6	B	1	Total	C	O	0	0
			4	2	2		

- Molecule 7 is CHLORIDE ION (three-letter code: CL) (formula: Cl).

Mol	Chain	Residues	Atoms		ZeroOcc	AltConf
7	A	1	Total	Cl	0	0
			1	1		
7	B	1	Total	Cl	0	0
			1	1		
7	C	1	Total	Cl	0	0
			1	1		
7	D	1	Total	Cl	0	0
			1	1		

- Molecule 8 is water.

Mol	Chain	Residues	Atoms		ZeroOcc	AltConf
8	A	196	Total	O	0	0
			196	196		
8	B	161	Total	O	0	0
			161	161		
8	C	121	Total	O	0	0
			121	121		

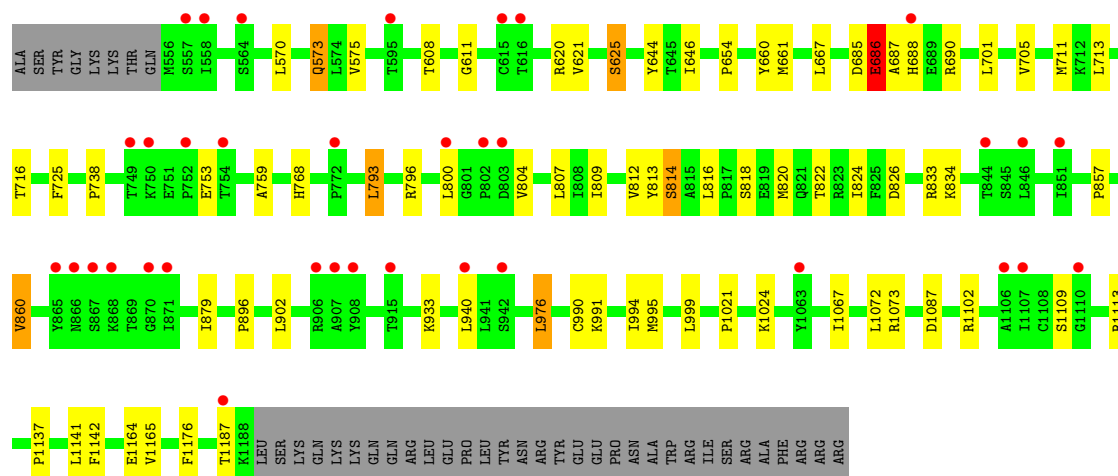
*Continued on next page...*

*Continued from previous page...*

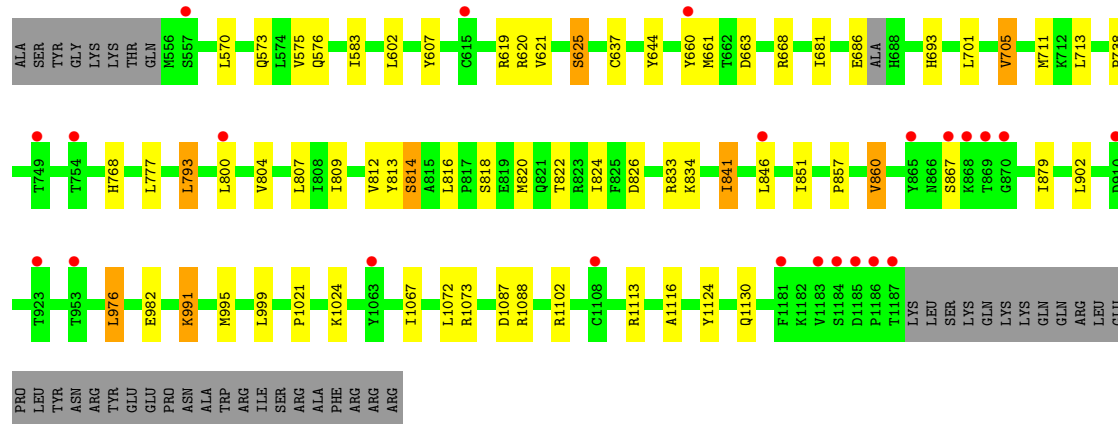
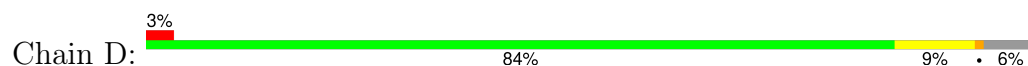
Mol	Chain	Residues	Atoms		ZeroOcc	AltConf
8	D	128	Total 128	O 128	0	0







- Molecule 1: ATP-dependent RNA helicase DHX8



## 4 Data and refinement statistics

Property	Value	Source
Space group	P 1 21 1	Depositor
Cell constants a, b, c, $\alpha$ , $\beta$ , $\gamma$	66.95Å 167.58Å 137.23Å 90.00° 92.68° 90.00°	Depositor
Resolution (Å)	33.80 – 2.33 33.79 – 2.33	Depositor EDS
% Data completeness (in resolution range)	99.4 (33.80-2.33) 99.4 (33.79-2.33)	Depositor EDS
$R_{merge}$	0.09	Depositor
$R_{sym}$	(Not available)	Depositor
$\langle I/\sigma(I) \rangle$ <sup>1</sup>	1.41 (at 2.34Å)	Xtriage
Refinement program	BUSTER 2.10.3	Depositor
R, $R_{free}$	0.187 , 0.222 0.196 , 0.229	Depositor DCC
$R_{free}$ test set	6422 reflections (5.02%)	wwPDB-VP
Wilson B-factor (Å <sup>2</sup> )	54.1	Xtriage
Anisotropy	0.248	Xtriage
Bulk solvent $k_{sol}$ (e/Å <sup>3</sup> ), $B_{sol}$ (Å <sup>2</sup> )	0.31 , 57.0	EDS
L-test for twinning <sup>2</sup>	$\langle  L  \rangle = 0.51$ , $\langle L^2 \rangle = 0.34$	Xtriage
Estimated twinning fraction	0.116 for h,-k,-l	Xtriage
$F_o, F_c$ correlation	0.96	EDS
Total number of atoms	20220	wwPDB-VP
Average B, all atoms (Å <sup>2</sup> )	66.0	wwPDB-VP

Xtriage's analysis on translational NCS is as follows: *The largest off-origin peak in the Patterson function is 5.95% of the height of the origin peak. No significant pseudotranslation is detected.*

<sup>1</sup>Intensities estimated from amplitudes.

<sup>2</sup>Theoretical values of  $\langle |L| \rangle$ ,  $\langle L^2 \rangle$  for acentric reflections are 0.5, 0.333 respectively for untwinned datasets, and 0.375, 0.2 for perfectly twinned datasets.

## 5 Model quality [i](#)

### 5.1 Standard geometry [i](#)

Bond lengths and bond angles in the following residue types are not validated in this section: ADP, MG, CL, DMS, ACT, EDO

The Z score for a bond length (or angle) is the number of standard deviations the observed value is removed from the expected value. A bond length (or angle) with  $|Z| > 5$  is considered an outlier worth inspection. RMSZ is the root-mean-square of all Z scores of the bond lengths (or angles).

Mol	Chain	Bond lengths		Bond angles	
		RMSZ	$\# Z  > 5$	RMSZ	$\# Z  > 5$
1	A	0.51	0/5012	0.71	3/6809 (0.0%)
1	B	0.50	0/4958	0.70	0/6742
1	C	0.49	0/4878	0.68	1/6645 (0.0%)
1	D	0.50	0/4906	0.68	0/6676
All	All	0.50	0/19754	0.69	4/26872 (0.0%)

There are no bond length outliers.

All (4) bond angle outliers are listed below:

Mol	Chain	Res	Type	Atoms	Z	Observed(°)	Ideal(°)
1	C	685	ASP	C-N-CA	5.52	135.49	121.70
1	A	685	ASP	C-N-CA	5.24	134.79	121.70
1	A	686	GLU	C-N-CA	5.10	134.46	121.70
1	A	689	GLU	N-CA-C	-5.10	97.22	111.00

There are no chirality outliers.

There are no planarity outliers.

### 5.2 Too-close contacts [i](#)

In the following table, the Non-H and H(model) columns list the number of non-hydrogen atoms and hydrogen atoms in the chain respectively. The H(added) column lists the number of hydrogen atoms added and optimized by MolProbity. The Clashes column lists the number of clashes within the asymmetric unit, whereas Symm-Clashes lists symmetry-related clashes.

Mol	Chain	Non-H	H(model)	H(added)	Clashes	Symm-Clashes
1	A	4914	0	4805	46	0
1	B	4858	0	4686	46	0
1	C	4779	0	4534	36	0

*Continued on next page...*

*Continued from previous page...*

Mol	Chain	Non-H	H(model)	H(added)	Clashes	Symm-Clashes
1	D	4808	0	4567	29	0
2	A	27	0	12	0	0
2	B	27	0	12	1	0
2	C	27	0	12	0	0
2	D	46	0	24	0	0
3	A	1	0	0	0	0
3	B	1	0	0	0	0
3	C	1	0	0	0	0
3	D	1	0	0	0	0
4	A	12	0	18	1	0
4	B	12	0	18	4	0
4	C	8	0	12	1	0
4	D	8	0	12	0	0
5	A	12	0	18	0	0
5	B	28	0	42	0	0
5	C	16	0	24	0	0
5	D	16	0	24	0	0
6	A	4	0	3	0	0
6	B	4	0	3	0	0
7	A	1	0	0	0	0
7	B	1	0	0	0	0
7	C	1	0	0	0	0
7	D	1	0	0	0	0
8	A	196	0	0	0	0
8	B	161	0	0	0	0
8	C	121	0	0	0	0
8	D	128	0	0	0	0
All	All	20220	0	18826	153	0

The all-atom clashscore is defined as the number of clashes found per 1000 atoms (including hydrogen atoms). The all-atom clashscore for this structure is 4.

The worst 5 of 153 close contacts within the same asymmetric unit are listed below, sorted by their clash magnitude.

Atom-1	Atom-2	Interatomic distance (Å)	Clash overlap (Å)
1:A:1185:ASP:HB3	1:A:1186:PRO:HD2	1.44	0.97
1:B:687:ALA:HB1	1:B:725:PHE:HZ	1.35	0.91
1:A:583:ILE:HD11	1:A:705:VAL:HG11	1.66	0.77
1:B:687:ALA:HB1	1:B:725:PHE:CZ	2.19	0.77
1:D:583:ILE:HD11	1:D:705:VAL:HG11	1.70	0.73

There are no symmetry-related clashes.

## 5.3 Torsion angles [i](#)

### 5.3.1 Protein backbone [i](#)

In the following table, the Percentiles column shows the percent Ramachandran outliers of the chain as a percentile score with respect to all X-ray entries followed by that with respect to entries of similar resolution.

The Analysed column shows the number of residues for which the backbone conformation was analysed, and the total number of residues.

Mol	Chain	Analysed	Favoured	Allowed	Outliers	Percentiles	
1	A	634/673 (94%)	612 (96%)	20 (3%)	2 (0%)	41	47
1	B	635/673 (94%)	611 (96%)	21 (3%)	3 (0%)	29	31
1	C	632/673 (94%)	614 (97%)	17 (3%)	1 (0%)	47	55
1	D	629/673 (94%)	612 (97%)	17 (3%)	0	100	100
All	All	2530/2692 (94%)	2449 (97%)	75 (3%)	6 (0%)	47	55

5 of 6 Ramachandran outliers are listed below:

Mol	Chain	Res	Type
1	B	687	ALA
1	A	1185	ASP
1	B	686	GLU
1	A	1182	LYS
1	B	1188	LYS

### 5.3.2 Protein sidechains [i](#)

In the following table, the Percentiles column shows the percent sidechain outliers of the chain as a percentile score with respect to all X-ray entries followed by that with respect to entries of similar resolution.

The Analysed column shows the number of residues for which the sidechain conformation was analysed, and the total number of residues.

Mol	Chain	Analysed	Rotameric	Outliers	Percentiles	
1	A	505/596 (85%)	477 (94%)	28 (6%)	21	25
1	B	479/596 (80%)	453 (95%)	26 (5%)	22	26
1	C	469/596 (79%)	448 (96%)	21 (4%)	27	34

*Continued on next page...*

*Continued from previous page...*

Mol	Chain	Analysed	Rotameric	Outliers	Percentiles	
1	D	475/596 (80%)	448 (94%)	27 (6%)	20	24
All	All	1928/2384 (81%)	1826 (95%)	102 (5%)	22	27

5 of 102 residues with a non-rotameric sidechain are listed below:

Mol	Chain	Res	Type
1	C	661	MET
1	C	995	MET
1	D	1088	ARG
1	C	686	GLU
1	C	793	LEU

Sometimes sidechains can be flipped to improve hydrogen bonding and reduce clashes. All (5) such sidechains are listed below:

Mol	Chain	Res	Type
1	A	862	GLN
1	B	678	GLN
1	C	688	HIS
1	D	576	GLN
1	D	1015	GLN

### 5.3.3 RNA [i](#)

There are no RNA molecules in this entry.

## 5.4 Non-standard residues in protein, DNA, RNA chains [i](#)

There are no non-standard protein/DNA/RNA residues in this entry.

## 5.5 Carbohydrates [i](#)

There are no monosaccharides in this entry.

## 5.6 Ligand geometry [i](#)

Of 43 ligands modelled in this entry, 8 are monoatomic - leaving 35 for Mogul analysis.

In the following table, the Counts columns list the number of bonds (or angles) for which Mogul statistics could be retrieved, the number of bonds (or angles) that are observed in the model and

the number of bonds (or angles) that are defined in the Chemical Component Dictionary. The Link column lists molecule types, if any, to which the group is linked. The Z score for a bond length (or angle) is the number of standard deviations the observed value is removed from the expected value. A bond length (or angle) with  $|Z| > 2$  is considered an outlier worth inspection. RMSZ is the root-mean-square of all Z scores of the bond lengths (or angles).

Mol	Type	Chain	Res	Link	Bond lengths			Bond angles		
					Counts	RMSZ	# Z  > 2	Counts	RMSZ	# Z  > 2
2	ADP	C	1301	3	24,29,29	0.78	0	29,45,45	1.55	4 (13%)
2	ADP	D	1301[B]	-	24,29,29	0.67	0	29,45,45	1.22	3 (10%)
5	DMS	D	1306	-	3,3,3	0.31	0	3,3,3	0.26	0
2	ADP	A	1301	3	24,29,29	0.89	1 (4%)	29,45,45	1.02	1 (3%)
5	DMS	B	1308	-	3,3,3	0.30	0	3,3,3	0.21	0
5	DMS	D	1308	-	3,3,3	0.34	0	3,3,3	0.65	0
2	ADP	D	1301[A]	-	24,29,29	0.64	0	29,45,45	1.07	4 (13%)
5	DMS	B	1306	-	3,3,3	0.25	0	3,3,3	0.31	0
5	DMS	B	1307	-	3,3,3	0.24	0	3,3,3	0.23	0
4	EDO	C	1303	-	3,3,3	0.69	0	2,2,2	0.26	0
5	DMS	B	1310	-	3,3,3	0.31	0	3,3,3	0.33	0
6	ACT	B	1313	-	3,3,3	1.20	0	3,3,3	1.08	0
5	DMS	C	1306	-	3,3,3	0.49	0	3,3,3	0.33	0
5	DMS	C	1308	-	3,3,3	0.43	0	3,3,3	0.56	0
4	EDO	A	1305	-	3,3,3	0.38	0	2,2,2	0.59	0
5	DMS	A	1306	-	3,3,3	0.27	0	3,3,3	0.35	0
2	ADP	B	1301	3	24,29,29	0.99	1 (4%)	29,45,45	0.92	1 (3%)
5	DMS	A	1308	-	3,3,3	0.33	0	3,3,3	0.30	0
4	EDO	B	1304	-	3,3,3	0.41	0	2,2,2	0.56	0
5	DMS	C	1305	-	3,3,3	0.32	0	3,3,3	0.36	0
4	EDO	D	1303	-	3,3,3	0.43	0	2,2,2	0.70	0
4	EDO	A	1303	-	3,3,3	0.38	0	2,2,2	0.33	0
5	DMS	C	1307	-	3,3,3	0.33	0	3,3,3	0.29	0
4	EDO	B	1305	-	3,3,3	0.53	0	2,2,2	0.45	0
5	DMS	A	1307	-	3,3,3	0.27	0	3,3,3	0.11	0
4	EDO	C	1304	-	3,3,3	0.53	0	2,2,2	0.23	0
5	DMS	B	1311	-	3,3,3	0.25	0	3,3,3	0.15	0
6	ACT	A	1309	-	3,3,3	1.32	0	3,3,3	0.88	0
4	EDO	A	1304	-	3,3,3	0.42	0	2,2,2	0.49	0
5	DMS	D	1305	-	3,3,3	0.39	0	3,3,3	0.31	0
5	DMS	B	1312	-	3,3,3	0.30	0	3,3,3	0.18	0
4	EDO	B	1303	-	3,3,3	0.75	0	2,2,2	0.53	0
5	DMS	D	1307	-	3,3,3	0.29	0	3,3,3	0.07	0
4	EDO	D	1304	-	3,3,3	0.48	0	2,2,2	0.41	0
5	DMS	B	1309	-	3,3,3	0.31	0	3,3,3	0.23	0



In the following table, the Chirals column lists the number of chiral outliers, the number of chiral centers analysed, the number of these observed in the model and the number defined in the Chemical Component Dictionary. Similar counts are reported in the Torsion and Rings columns. '-' means no outliers of that kind were identified.

Mol	Type	Chain	Res	Link	Chirals	Torsions	Rings
4	EDO	A	1305	-	-	0/1/1/1	-
2	ADP	B	1301	3	-	3/12/32/32	0/3/3/3
4	EDO	A	1304	-	-	0/1/1/1	-
2	ADP	D	1301[A]	-	-	0/12/32/32	0/3/3/3
4	EDO	B	1304	-	-	0/1/1/1	-
4	EDO	B	1303	-	-	1/1/1/1	-
4	EDO	D	1303	-	-	0/1/1/1	-
2	ADP	C	1301	3	-	3/12/32/32	0/3/3/3
2	ADP	D	1301[B]	-	-	5/12/32/32	0/3/3/3
4	EDO	C	1303	-	-	0/1/1/1	-
4	EDO	A	1303	-	-	0/1/1/1	-
4	EDO	D	1304	-	-	0/1/1/1	-
2	ADP	A	1301	3	-	0/12/32/32	0/3/3/3
4	EDO	B	1305	-	-	0/1/1/1	-
4	EDO	C	1304	-	-	1/1/1/1	-

All (2) bond length outliers are listed below:

Mol	Chain	Res	Type	Atoms	Z	Observed(Å)	Ideal(Å)
2	B	1301	ADP	PB-O3B	-3.32	1.42	1.54
2	A	1301	ADP	PB-O3B	-3.20	1.42	1.54

The worst 5 of 13 bond angle outliers are listed below:

Mol	Chain	Res	Type	Atoms	Z	Observed(°)	Ideal(°)
2	C	1301	ADP	C4'-O4'-C1'	-6.16	104.28	109.92
2	D	1301[B]	ADP	C4'-O4'-C1'	-4.24	106.04	109.92
2	A	1301	ADP	C5-C6-N6	2.58	124.24	120.31
2	D	1301[A]	ADP	C4'-O4'-C1'	-2.49	107.64	109.92
2	B	1301	ADP	C5-C6-N6	2.48	124.08	120.31

There are no chirality outliers.

5 of 13 torsion outliers are listed below:

Mol	Chain	Res	Type	Atoms
2	C	1301	ADP	C5'-O5'-PA-O2A
2	D	1301[B]	ADP	C5'-O5'-PA-O1A

*Continued on next page...*

*Continued from previous page...*

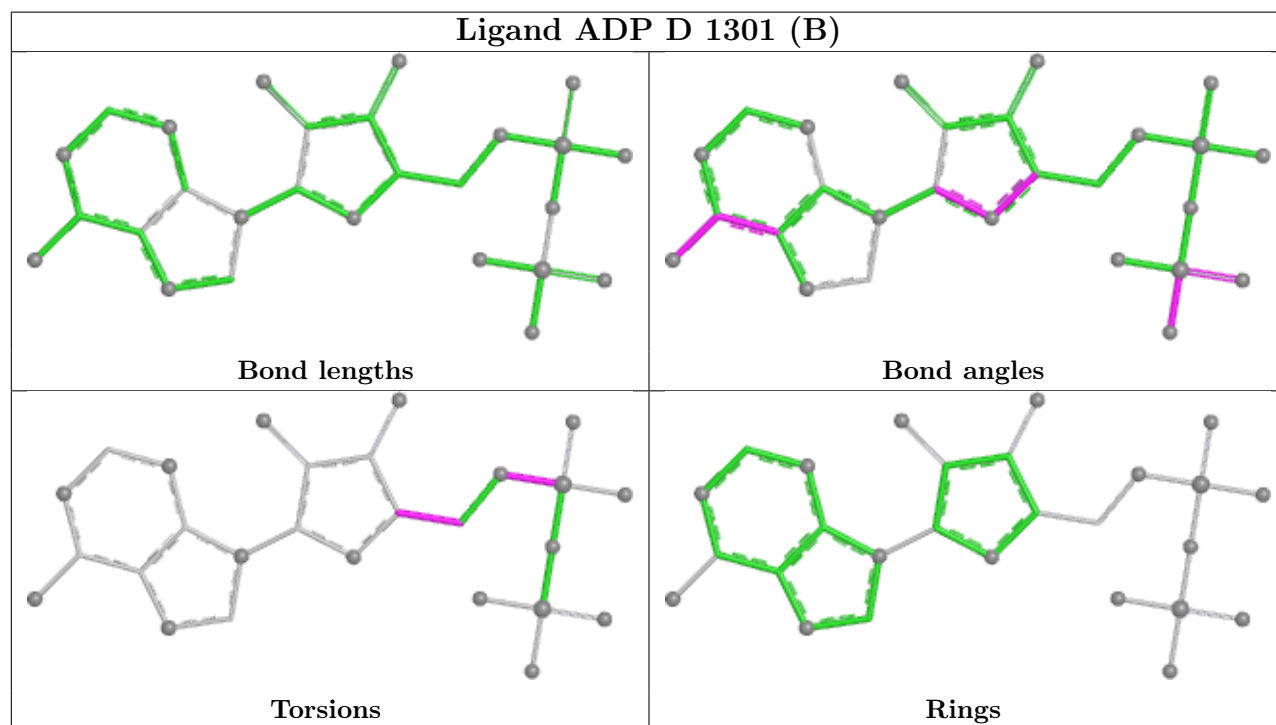
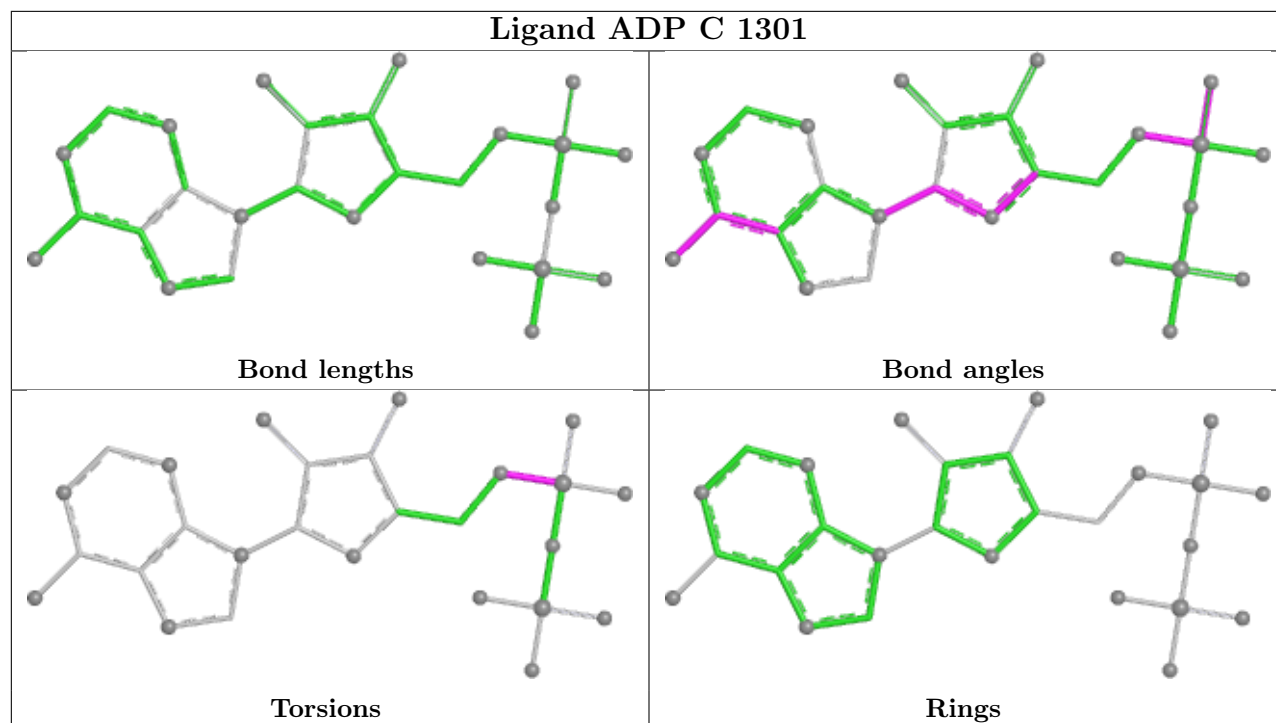
Mol	Chain	Res	Type	Atoms
2	D	1301[B]	ADP	C5'-O5'-PA-O2A
2	D	1301[B]	ADP	C5'-O5'-PA-O3A
2	B	1301	ADP	C3'-C4'-C5'-O5'

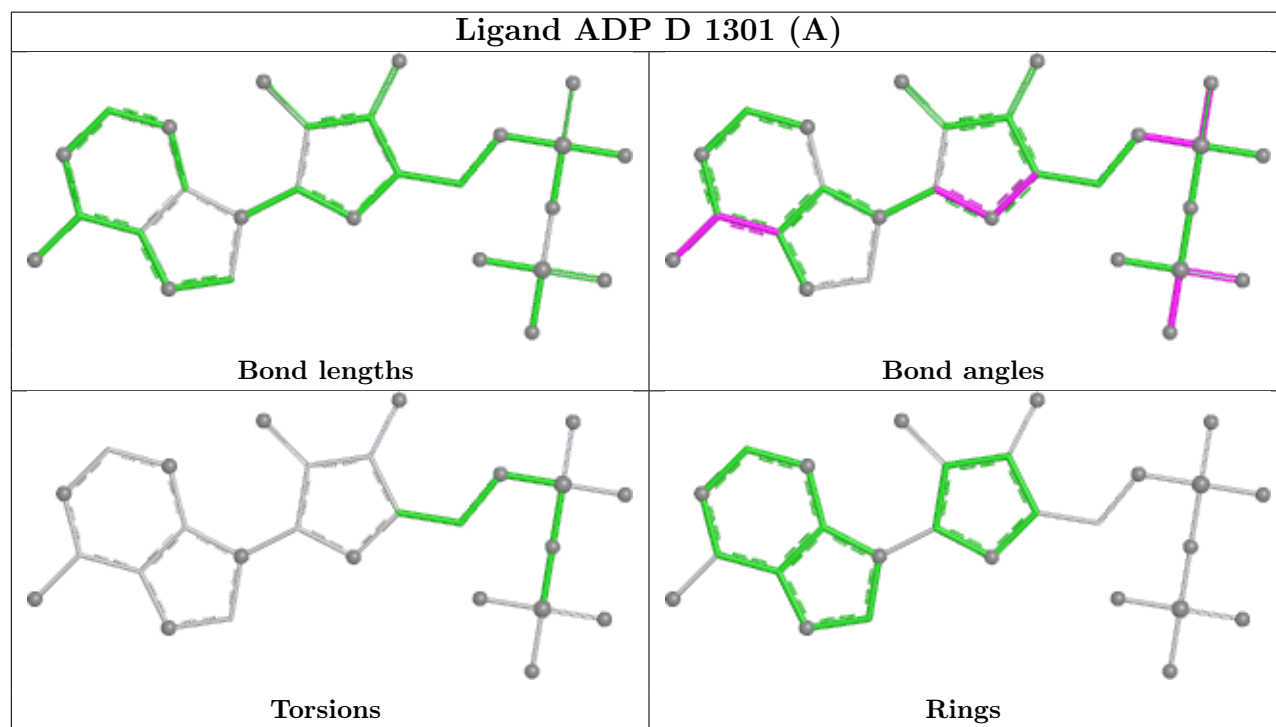
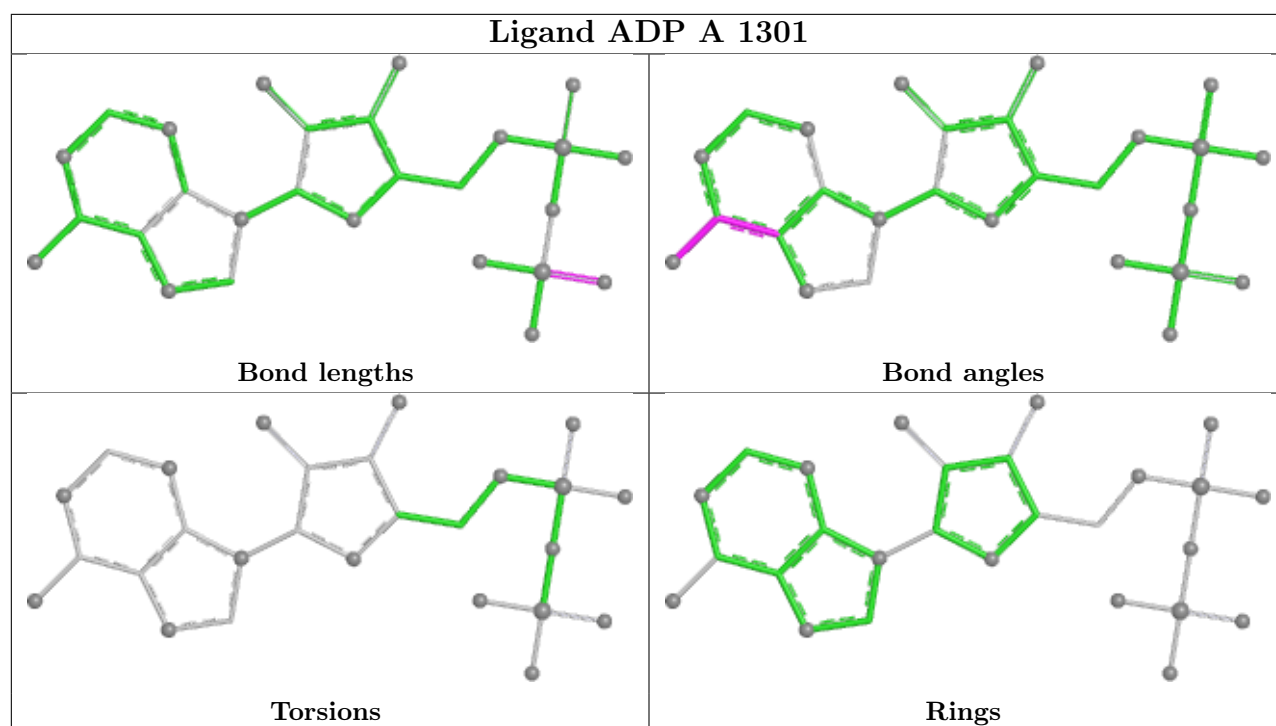
There are no ring outliers.

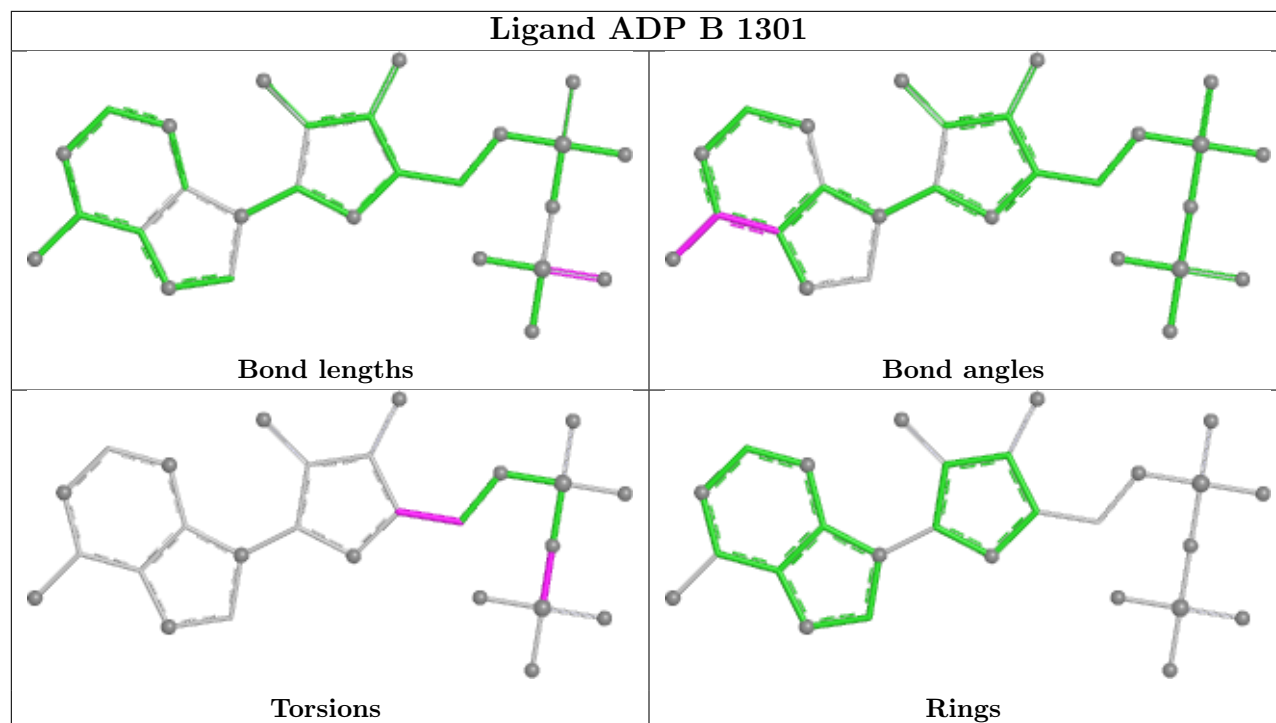
6 monomers are involved in 7 short contacts:

Mol	Chain	Res	Type	Clashes	Symm-Clashes
2	B	1301	ADP	1	0
4	B	1304	EDO	1	0
4	B	1305	EDO	1	0
4	C	1304	EDO	1	0
4	A	1304	EDO	1	0
4	B	1303	EDO	2	0

The following is a two-dimensional graphical depiction of Mogul quality analysis of bond lengths, bond angles, torsion angles, and ring geometry for all instances of the Ligand of Interest. In addition, ligands with molecular weight > 250 and outliers as shown on the validation Tables will also be included. For torsion angles, if less than 5% of the Mogul distribution of torsion angles is within 10 degrees of the torsion angle in question, then that torsion angle is considered an outlier. Any bond that is central to one or more torsion angles identified as an outlier by Mogul will be highlighted in the graph. For rings, the root-mean-square deviation (RMSD) between the ring in question and similar rings identified by Mogul is calculated over all ring torsion angles. If the average RMSD is greater than 60 degrees and the minimal RMSD between the ring in question and any Mogul-identified rings is also greater than 60 degrees, then that ring is considered an outlier. The outliers are highlighted in purple. The color gray indicates Mogul did not find sufficient equivalents in the CSD to analyse the geometry.







## 5.7 Other polymers [i](#)

There are no such residues in this entry.

## 5.8 Polymer linkage issues [i](#)

There are no chain breaks in this entry.

## 6 Fit of model and data [i](#)

### 6.1 Protein, DNA and RNA chains [i](#)

In the following table, the column labelled ‘#RSRZ > 2’ contains the number (and percentage) of RSRZ outliers, followed by percent RSRZ outliers for the chain as percentile scores relative to all X-ray entries and entries of similar resolution. The OWAB column contains the minimum, median, 95<sup>th</sup> percentile and maximum values of the occupancy-weighted average B-factor per residue. The column labelled ‘Q < 0.9’ lists the number of (and percentage) of residues with an average occupancy less than 0.9.

Mol	Chain	Analysed	<RSRZ>	#RSRZ>2	OWAB(Å <sup>2</sup> )	Q<0.9
1	A	632/673 (93%)	0.12	21 (3%) 46 57	39, 59, 89, 110	0
1	B	634/673 (94%)	0.11	19 (2%) 50 60	38, 64, 93, 128	0
1	C	633/673 (94%)	0.24	35 (5%) 25 34	44, 68, 99, 121	0
1	D	631/673 (93%)	0.15	23 (3%) 42 53	45, 66, 94, 120	0
All	All	2530/2692 (93%)	0.15	98 (3%) 39 50	38, 64, 94, 128	0

The worst 5 of 98 RSRZ outliers are listed below:

Mol	Chain	Res	Type	RSRZ
1	A	556	MET	7.5
1	C	870	GLY	6.9
1	C	868	LYS	5.5
1	A	555	GLN	5.3
1	C	867	SER	4.4

### 6.2 Non-standard residues in protein, DNA, RNA chains [i](#)

There are no non-standard protein/DNA/RNA residues in this entry.

### 6.3 Carbohydrates [i](#)

There are no monosaccharides in this entry.

### 6.4 Ligands [i](#)

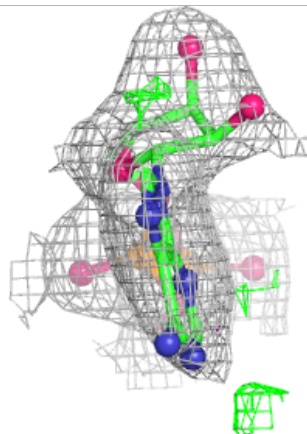
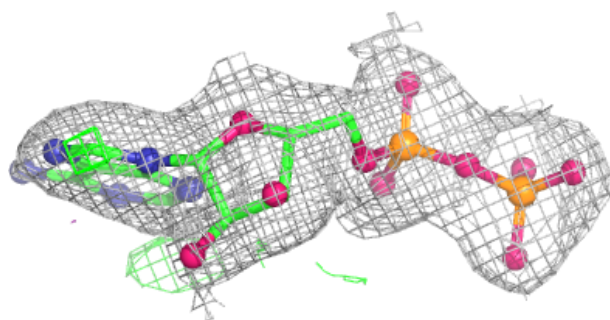
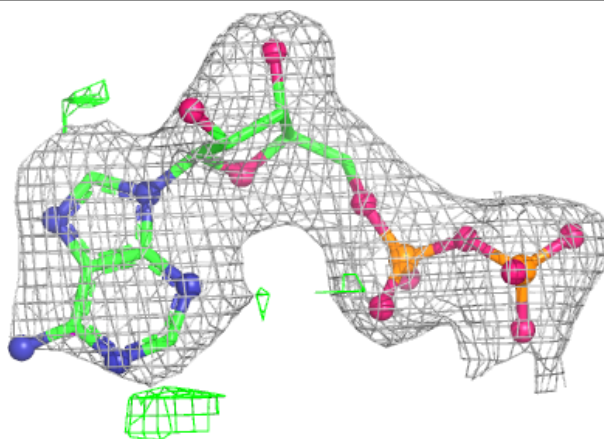
In the following table, the Atoms column lists the number of modelled atoms in the group and the number defined in the chemical component dictionary. The B-factors column lists the minimum, median, 95<sup>th</sup> percentile and maximum values of B factors of atoms in the group. The column labelled ‘Q < 0.9’ lists the number of atoms with occupancy less than 0.9.

Mol	Type	Chain	Res	Atoms	RSCC	RSR	B-factors( $\text{\AA}^2$ )	Q<0.9
4	EDO	B	1303	4/4	0.69	0.28	63,64,65,66	0
5	DMS	B	1310	4/4	0.74	0.19	131,132,132,132	0
5	DMS	D	1306	4/4	0.74	0.32	124,125,125,126	0
6	ACT	A	1309	4/4	0.74	0.21	76,77,77,77	0
5	DMS	B	1309	4/4	0.79	0.36	136,137,137,138	0
5	DMS	B	1311	4/4	0.81	0.27	116,117,117,117	0
3	MG	C	1302	1/1	0.84	0.15	72,72,72,72	0
7	CL	A	1310	1/1	0.85	0.10	91,91,91,91	0
4	EDO	C	1303	4/4	0.87	0.23	59,63,65,65	0
7	CL	B	1314	1/1	0.87	0.14	107,107,107,107	0
7	CL	D	1309	1/1	0.87	0.09	101,101,101,101	0
5	DMS	C	1308	4/4	0.88	0.28	109,110,111,111	0
5	DMS	A	1306	4/4	0.88	0.27	97,99,99,100	0
7	CL	C	1309	1/1	0.88	0.19	91,91,91,91	0
4	EDO	D	1304	4/4	0.88	0.26	83,84,86,88	0
4	EDO	B	1304	4/4	0.89	0.28	74,74,76,78	0
5	DMS	A	1308	4/4	0.89	0.22	108,109,110,110	0
5	DMS	B	1312	4/4	0.90	0.20	104,105,105,106	0
3	MG	A	1302	1/1	0.90	0.14	63,63,63,63	0
4	EDO	A	1303	4/4	0.91	0.23	55,58,59,61	0
6	ACT	B	1313	4/4	0.91	0.14	76,77,78,78	0
5	DMS	B	1307	4/4	0.91	0.18	113,113,114,114	0
4	EDO	B	1305	4/4	0.92	0.22	71,71,72,75	0
5	DMS	C	1305	4/4	0.92	0.15	116,116,116,116	0
5	DMS	D	1308	4/4	0.92	0.18	124,125,125,125	0
5	DMS	D	1307	4/4	0.93	0.18	99,102,102,102	0
5	DMS	C	1306	4/4	0.93	0.52	93,94,95,96	0
5	DMS	A	1307	4/4	0.93	0.29	116,116,117,118	0
5	DMS	B	1306	4/4	0.93	0.15	111,112,113,113	0
5	DMS	D	1305	4/4	0.94	0.20	106,107,108,108	0
4	EDO	A	1305	4/4	0.94	0.15	78,78,79,80	0
4	EDO	C	1304	4/4	0.94	0.16	72,72,72,74	0
4	EDO	D	1303	4/4	0.94	0.16	69,69,70,71	0
3	MG	B	1302	1/1	0.94	0.12	64,64,64,64	0
5	DMS	C	1307	4/4	0.95	0.14	99,100,100,100	0
4	EDO	A	1304	4/4	0.95	0.26	78,78,78,79	0
2	ADP	C	1301	27/27	0.95	0.21	49,62,67,68	27
2	ADP	A	1301	27/27	0.96	0.20	45,54,61,66	27
5	DMS	B	1308	4/4	0.96	0.35	101,101,101,102	0
2	ADP	D	1301[B]	27/27	0.97	0.14	57,73,74,76	19
3	MG	D	1302	1/1	0.97	0.18	65,65,65,65	0
2	ADP	B	1301	27/27	0.97	0.20	50,66,72,75	27
2	ADP	D	1301[A]	27/27	0.97	0.14	53,58,61,62	19

The following is a graphical depiction of the model fit to experimental electron density of all instances of the Ligand of Interest. In addition, ligands with molecular weight > 250 and outliers as shown on the geometry validation Tables will also be included. Each fit is shown from different orientation to approximate a three-dimensional view.

**Electron density around ADP C 1301:**

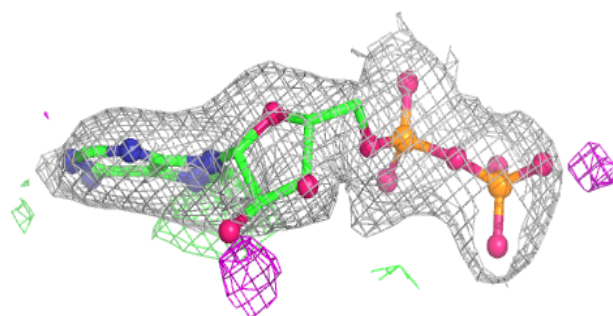
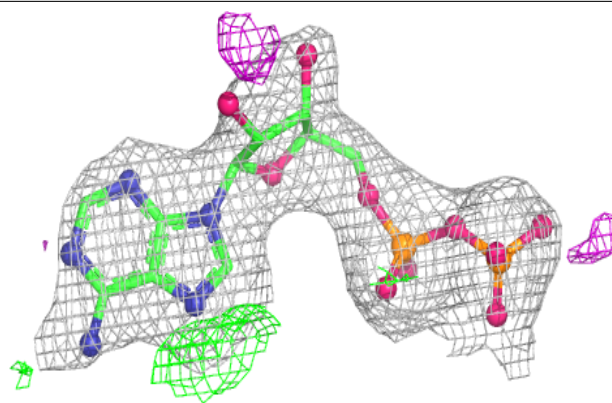
$2mF_o-DF_c$  (at 0.7 rmsd) in gray  
 $mF_o-DF_c$  (at 3 rmsd) in purple (negative)  
and green (positive)



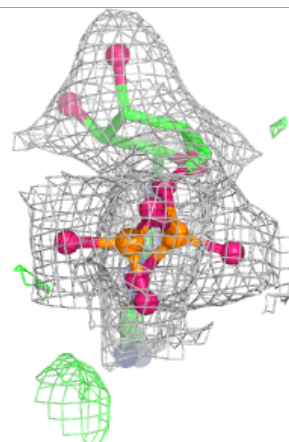
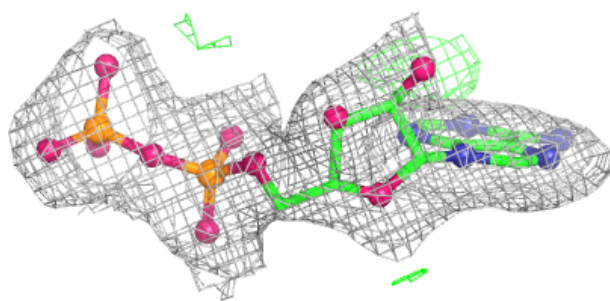
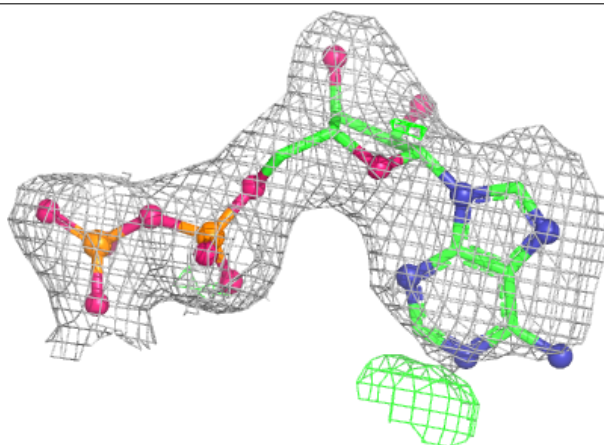


**Electron density around ADP A 1301:**

$2mF_o-DF_c$  (at 0.7 rmsd) in gray  
 $mF_o-DF_c$  (at 3 rmsd) in purple (negative)  
and green (positive)

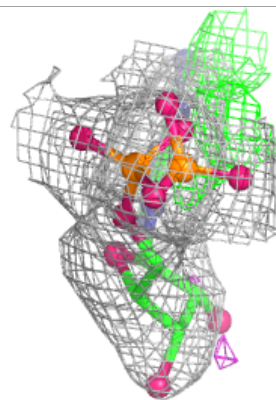
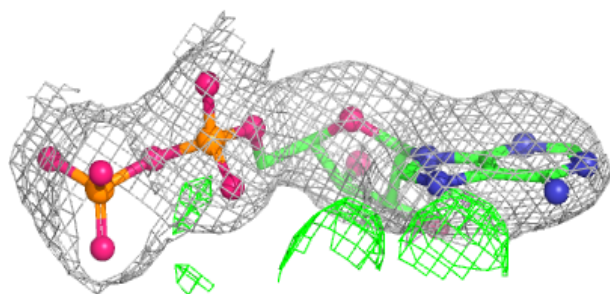
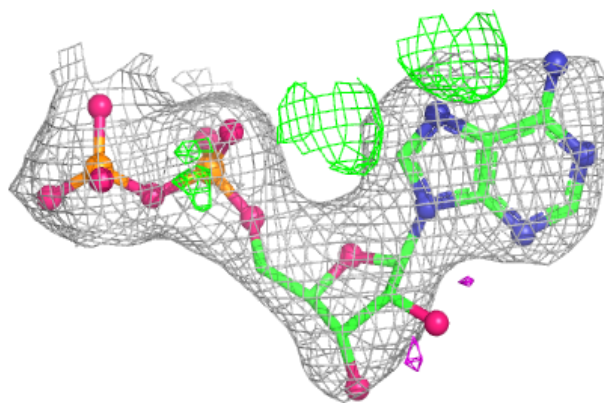
**Electron density around ADP D 1301 (B):**

$2mF_o-DF_c$  (at 0.7 rmsd) in gray  
 $mF_o-DF_c$  (at 3 rmsd) in purple (negative)  
and green (positive)

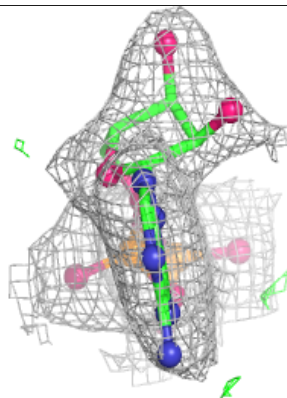
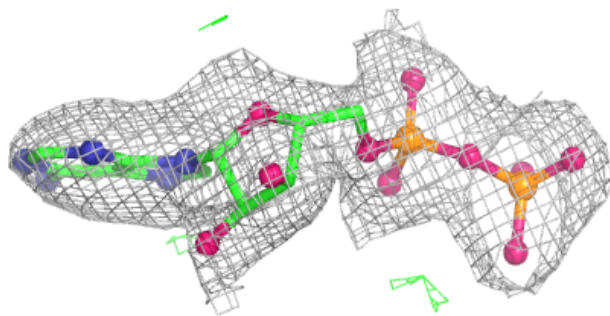
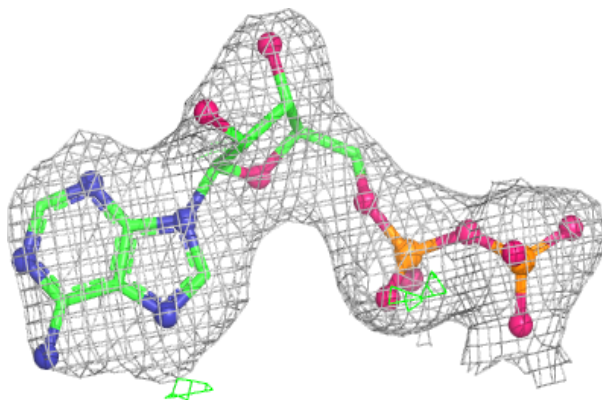


**Electron density around ADP B 1301:**

$2mF_o-DF_c$  (at 0.7 rmsd) in gray  
 $mF_o-DF_c$  (at 3 rmsd) in purple (negative)  
and green (positive)

**Electron density around ADP D 1301 (A):**

$2mF_o-DF_c$  (at 0.7 rmsd) in gray  
 $mF_o-DF_c$  (at 3 rmsd) in purple (negative)  
and green (positive)



## 6.5 Other polymers [i](#)

There are no such residues in this entry.