



# wwPDB X-ray Structure Validation Summary Report ⓘ

Oct 7, 2024 – 03:07 PM EDT

PDB ID : 4HWT  
Title : Crystal structure of human Threonyl-tRNA synthetase bound to a novel inhibitor  
Authors : Hilgers, M.T.  
Deposited on : 2012-11-08  
Resolution : 2.30 Å(reported)

This is a wwPDB X-ray Structure Validation Summary Report for a publicly released PDB entry.

We welcome your comments at [validation@mail.wwpdb.org](mailto:validation@mail.wwpdb.org)

A user guide is available at

<https://www.wwpdb.org/validation/2017/XrayValidationReportHelp>

with specific help available everywhere you see the ⓘ symbol.

The types of validation reports are described at

<http://www.wwpdb.org/validation/2017/FAQs#types>.

---

The following versions of software and data (see [references ⓘ](#)) were used in the production of this report:

MolProbity	:	4.02b-467
Mogul	:	2022.3.0, CSD as543be (2022)
Xtriage (Phenix)	:	1.20.1
EDS	:	3.0
buster-report	:	1.1.7 (2018)
Percentile statistics	:	20231227.v01 (using entries in the PDB archive December 27th 2023)
CCP4	:	9.0.003 (Gargrove)
Density-Fitness	:	1.0.11
Ideal geometry (proteins)	:	Engh & Huber (2001)
Ideal geometry (DNA, RNA)	:	Parkinson et al. (1996)
Validation Pipeline (wwPDB-VP)	:	2.39

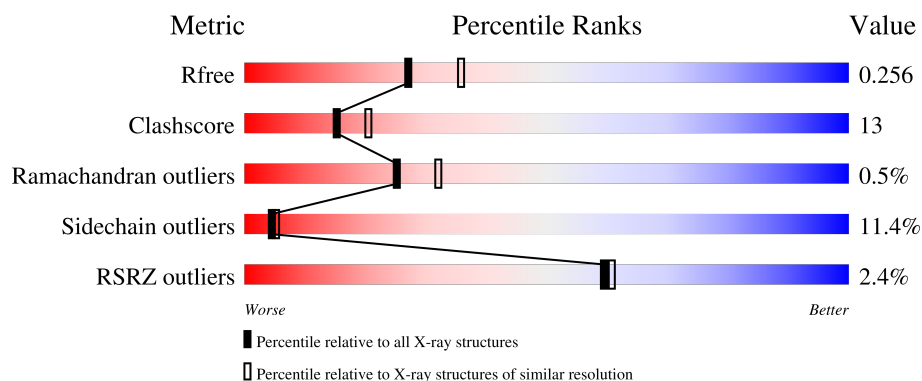
# 1 Overall quality at a glance

The following experimental techniques were used to determine the structure:

*X-RAY DIFFRACTION*

The reported resolution of this entry is 2.30 Å.

Percentile scores (ranging between 0-100) for global validation metrics of the entry are shown in the following graphic. The table shows the number of entries on which the scores are based.



Metric	Whole archive (#Entries)	Similar resolution (#Entries, resolution range(Å))
$R_{free}$	164625	5963 (2.30-2.30)
Clashscore	180529	6698 (2.30-2.30)
Ramachandran outliers	177936	6640 (2.30-2.30)
Sidechain outliers	177891	6640 (2.30-2.30)
RSRZ outliers	164620	5963 (2.30-2.30)

The table below summarises the geometric issues observed across the polymeric chains and their fit to the electron density. The red, orange, yellow and green segments of the lower bar indicate the fraction of residues that contain outliers for  $\geq 3$ , 2, 1 and 0 types of geometric quality criteria respectively. A grey segment represents the fraction of residues that are not modelled. The numeric value for each fraction is indicated below the corresponding segment, with a dot representing fractions  $\leq 5\%$ . The upper red bar (where present) indicates the fraction of residues that have poor fit to the electron density. The numeric value is given above the bar.

Mol	Chain	Length	Quality of chain
1	A	413	<div> <div>3%</div> <div> <div></div> <div>70%</div> <div>20%</div> <div>...</div> </div> </div>
1	B	413	<div> <div>2%</div> <div> <div></div> <div>71%</div> <div>21%</div> <div>...</div> </div> </div>

## 2 Entry composition

There are 4 unique types of molecules in this entry. The entry contains 6972 atoms, of which 0 are hydrogens and 0 are deuteriums.

In the tables below, the ZeroOcc column contains the number of atoms modelled with zero occupancy, the AltConf column contains the number of residues with at least one atom in alternate conformation and the Trace column contains the number of residues modelled with at most 2 atoms.

- Molecule 1 is a protein called Threonine-tRNA ligase, cytoplasmic.

Mol	Chain	Residues	Atoms					ZeroOcc	AltConf	Trace
1	A	395	Total	C	N	O	S	0	0	0
			3258	2082	578	582	16			
1	B	402	Total	C	N	O	S	0	0	0
			3315	2113	587	599	16			

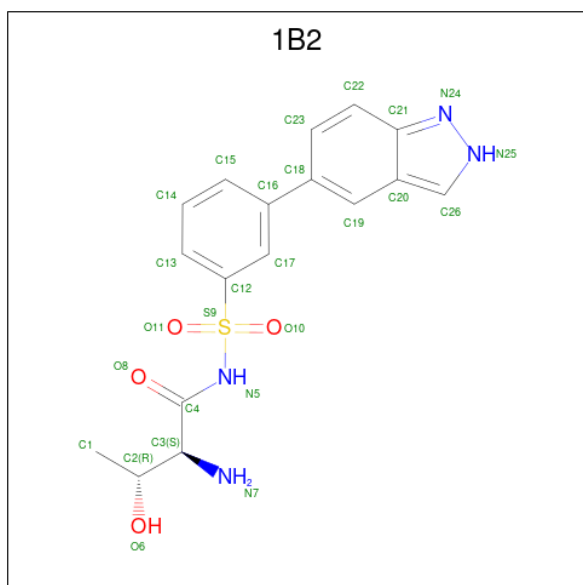
There are 20 discrepancies between the modelled and reference sequences:

Chain	Residue	Modelled	Actual	Comment	Reference
A	352	MET	-	expression tag	UNP P26639
A	353	ALA	-	expression tag	UNP P26639
A	757	LEU	-	expression tag	UNP P26639
A	758	GLU	-	expression tag	UNP P26639
A	759	HIS	-	expression tag	UNP P26639
A	760	HIS	-	expression tag	UNP P26639
A	761	HIS	-	expression tag	UNP P26639
A	762	HIS	-	expression tag	UNP P26639
A	763	HIS	-	expression tag	UNP P26639
A	764	HIS	-	expression tag	UNP P26639
B	352	MET	-	expression tag	UNP P26639
B	353	ALA	-	expression tag	UNP P26639
B	757	LEU	-	expression tag	UNP P26639
B	758	GLU	-	expression tag	UNP P26639
B	759	HIS	-	expression tag	UNP P26639
B	760	HIS	-	expression tag	UNP P26639
B	761	HIS	-	expression tag	UNP P26639
B	762	HIS	-	expression tag	UNP P26639
B	763	HIS	-	expression tag	UNP P26639
B	764	HIS	-	expression tag	UNP P26639

- Molecule 2 is ZINC ION (three-letter code: ZN) (formula: Zn).

Mol	Chain	Residues	Atoms		ZeroOcc	AltConf
2	A	1	Total	Zn	0	0
			1	1		
2	B	1	Total	Zn	0	0
			1	1		

- Molecule 3 is N-{[3-(2H-indazol-5-yl)phenyl]sulfonyl}-L-threoninamide (three-letter code: 1B2) (formula: C<sub>17</sub>H<sub>18</sub>N<sub>4</sub>O<sub>4</sub>S).



Mol	Chain	Residues	Atoms					ZeroOcc	AltConf
3	A	1	Total	C	N	O	S	0	0
			26	17	4	4	1		
3	B	1	Total	C	N	O	S	0	0
			26	17	4	4	1		

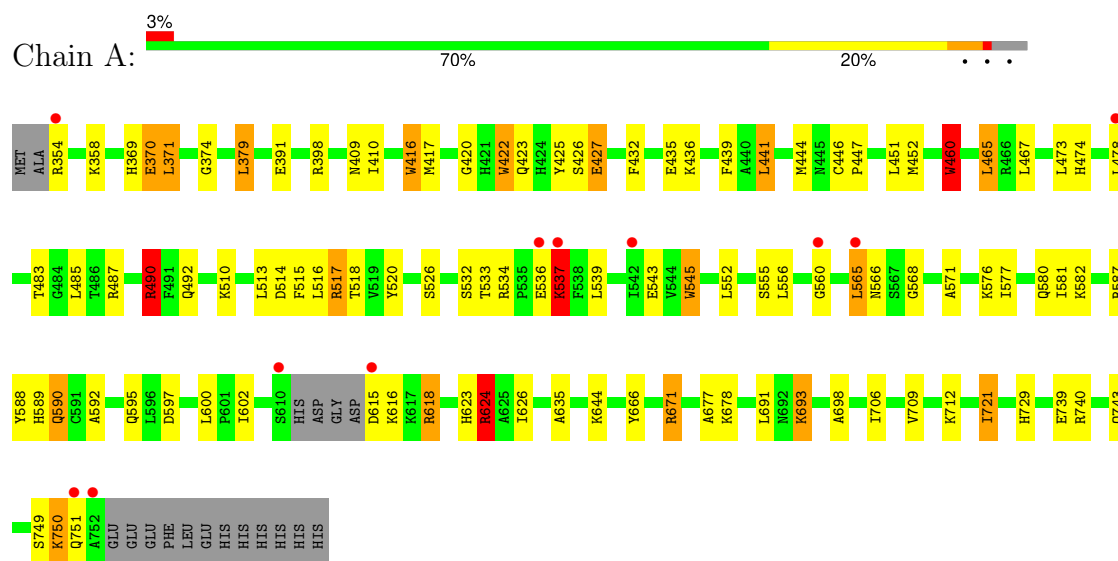
- Molecule 4 is water.

Mol	Chain	Residues	Atoms		ZeroOcc	AltConf
4	A	162	Total	O	0	0
			162	162		
4	B	183	Total	O	0	0
			183	183		

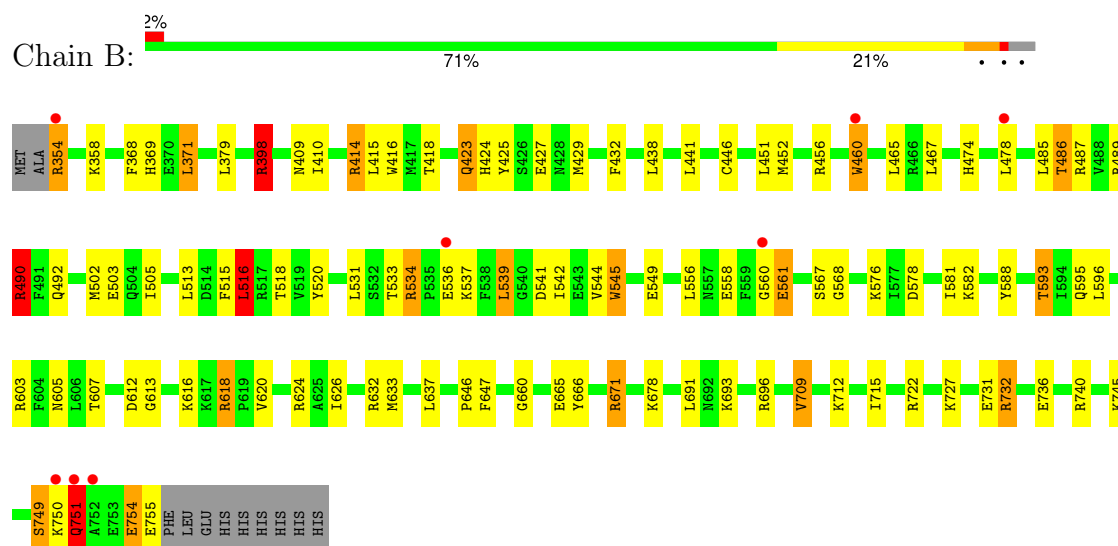
### 3 Residue-property plots [i](#)

These plots are drawn for all protein, RNA, DNA and oligosaccharide chains in the entry. The first graphic for a chain summarises the proportions of the various outlier classes displayed in the second graphic. The second graphic shows the sequence view annotated by issues in geometry and electron density. Residues are color-coded according to the number of geometric quality criteria for which they contain at least one outlier: green = 0, yellow = 1, orange = 2 and red = 3 or more. A red dot above a residue indicates a poor fit to the electron density ( $RSRZ > 2$ ). Stretches of 2 or more consecutive residues without any outlier are shown as a green connector. Residues present in the sample, but not in the model, are shown in grey.

- Molecule 1: Threonine-tRNA ligase, cytoplasmic



- Molecule 1: Threonine-tRNA ligase, cytoplasmic



## 4 Data and refinement statistics

Property	Value	Source
Space group	P 41 21 2	Depositor
Cell constants a, b, c, $\alpha$ , $\beta$ , $\gamma$	73.90Å 73.90Å 357.59Å 90.00° 90.00° 90.00°	Depositor
Resolution (Å)	42.19 – 2.30 42.19 – 2.30	Depositor EDS
% Data completeness (in resolution range)	97.8 (42.19-2.30) 97.8 (42.19-2.30)	Depositor EDS
$R_{merge}$	0.09	Depositor
$R_{sym}$	(Not available)	Depositor
$\langle I/\sigma(I) \rangle$ <sup>1</sup>	4.94 (at 2.29Å)	Xtriage
Refinement program	REFMAC 5.6.0117	Depositor
R, $R_{free}$	0.207 , 0.257 0.207 , 0.256	Depositor DCC
$R_{free}$ test set	2241 reflections (5.04%)	wwPDB-VP
Wilson B-factor (Å <sup>2</sup> )	37.6	Xtriage
Anisotropy	0.018	Xtriage
Bulk solvent $k_{sol}$ (e/Å <sup>3</sup> ), $B_{sol}$ (Å <sup>2</sup> )	0.31 , 20.9	EDS
L-test for twinning <sup>2</sup>	$\langle  L  \rangle = 0.50$ , $\langle L^2 \rangle = 0.34$	Xtriage
Estimated twinning fraction	No twinning to report.	Xtriage
$F_o, F_c$ correlation	0.95	EDS
Total number of atoms	6972	wwPDB-VP
Average B, all atoms (Å <sup>2</sup> )	44.0	wwPDB-VP

Xtriage's analysis on translational NCS is as follows: *The largest off-origin peak in the Patterson function is 2.98% of the height of the origin peak. No significant pseudotranslation is detected.*

<sup>1</sup>Intensities estimated from amplitudes.

<sup>2</sup>Theoretical values of  $\langle |L| \rangle$ ,  $\langle L^2 \rangle$  for acentric reflections are 0.5, 0.333 respectively for untwinned datasets, and 0.375, 0.2 for perfectly twinned datasets.

## 5 Model quality

### 5.1 Standard geometry

Bond lengths and bond angles in the following residue types are not validated in this section: 1B2, ZN

The Z score for a bond length (or angle) is the number of standard deviations the observed value is removed from the expected value. A bond length (or angle) with  $|Z| > 5$  is considered an outlier worth inspection. RMSZ is the root-mean-square of all Z scores of the bond lengths (or angles).

Mol	Chain	Bond lengths		Bond angles	
		RMSZ	$\# Z  > 5$	RMSZ	$\# Z  > 5$
1	A	0.65	5/3338 (0.1%)	0.76	7/4498 (0.2%)
1	B	0.68	3/3397 (0.1%)	0.82	8/4579 (0.2%)
All	All	0.66	8/6735 (0.1%)	0.79	15/9077 (0.2%)

Chiral center outliers are detected by calculating the chiral volume of a chiral center and verifying if the center is modelled as a planar moiety or with the opposite hand. A planarity outlier is detected by checking planarity of atoms in a peptide group, atoms in a mainchain group or atoms of a sidechain that are expected to be planar.

Mol	Chain	#Chirality outliers	#Planarity outliers
1	B	0	1

The worst 5 of 8 bond length outliers are listed below:

Mol	Chain	Res	Type	Atoms	Z	Observed(Å)	Ideal(Å)
1	B	460	TRP	CD2-CE2	7.15	1.50	1.41
1	A	416	TRP	CD2-CE2	5.56	1.48	1.41
1	B	545	TRP	CD2-CE2	5.46	1.47	1.41
1	A	391	GLU	CD-OE1	5.32	1.31	1.25
1	A	545	TRP	CD2-CE2	5.28	1.47	1.41

The worst 5 of 15 bond angle outliers are listed below:

Mol	Chain	Res	Type	Atoms	Z	Observed(°)	Ideal(°)
1	A	624	ARG	NE-CZ-NH2	-7.56	116.52	120.30
1	B	539	LEU	CA-CB-CG	7.28	132.04	115.30
1	B	516	LEU	CA-CB-CG	6.98	131.36	115.30
1	B	490	ARG	NE-CZ-NH2	-6.83	116.88	120.30
1	B	398	ARG	NE-CZ-NH1	6.74	123.67	120.30

There are no chirality outliers.

All (1) planarity outliers are listed below:

Mol	Chain	Res	Type	Group
1	B	560	GLY	Peptide

## 5.2 Too-close contacts ⓘ

In the following table, the Non-H and H(model) columns list the number of non-hydrogen atoms and hydrogen atoms in the chain respectively. The H(added) column lists the number of hydrogen atoms added and optimized by MolProbity. The Clashes column lists the number of clashes within the asymmetric unit, whereas Symm-Clashes lists symmetry-related clashes.

Mol	Chain	Non-H	H(model)	H(added)	Clashes	Symm-Clashes
1	A	3258	0	3206	91	0
1	B	3315	0	3243	95	0
2	A	1	0	0	0	0
2	B	1	0	0	0	0
3	A	26	0	18	5	0
3	B	26	0	17	0	0
4	A	162	0	0	35	0
4	B	183	0	0	35	0
All	All	6972	0	6484	175	0

The all-atom clashscore is defined as the number of clashes found per 1000 atoms (including hydrogen atoms). The all-atom clashscore for this structure is 13.

The worst 5 of 175 close contacts within the same asymmetric unit are listed below, sorted by their clash magnitude.

Atom-1	Atom-2	Interatomic distance (Å)	Clash overlap (Å)
1:A:721:ILE:HG21	4:A:971:HOH:O	1.23	1.26
1:A:410:ILE:HB	4:A:1032:HOH:O	1.46	1.15
1:B:503:GLU:HB2	4:B:1047:HOH:O	1.47	1.09
1:B:722:ARG:HB2	4:B:1061:HOH:O	1.55	1.07
1:A:526:SER:HB2	4:A:1019:HOH:O	1.62	1.00

There are no symmetry-related clashes.



## 5.3 Torsion angles

### 5.3.1 Protein backbone

In the following table, the Percentiles column shows the percent Ramachandran outliers of the chain as a percentile score with respect to all X-ray entries followed by that with respect to entries of similar resolution.

The Analysed column shows the number of residues for which the backbone conformation was analysed, and the total number of residues.

Mol	Chain	Analysed	Favoured	Allowed	Outliers	Percentiles	
1	A	391/413 (95%)	377 (96%)	11 (3%)	3 (1%)	16	20
1	B	400/413 (97%)	384 (96%)	15 (4%)	1 (0%)	37	47
All	All	791/826 (96%)	761 (96%)	26 (3%)	4 (0%)	25	32

All (4) Ramachandran outliers are listed below:

Mol	Chain	Res	Type
1	B	751	GLN
1	A	560	GLY
1	A	537	LYS
1	A	750	LYS

### 5.3.2 Protein sidechains

In the following table, the Percentiles column shows the percent sidechain outliers of the chain as a percentile score with respect to all X-ray entries followed by that with respect to entries of similar resolution.

The Analysed column shows the number of residues for which the sidechain conformation was analysed, and the total number of residues.

Mol	Chain	Analysed	Rotameric	Outliers	Percentiles	
1	A	351/367 (96%)	315 (90%)	36 (10%)	6	7
1	B	357/367 (97%)	312 (87%)	45 (13%)	3	4
All	All	708/734 (96%)	627 (89%)	81 (11%)	4	5

5 of 81 residues with a non-rotameric sidechain are listed below:

Mol	Chain	Res	Type
1	B	518	THR
1	B	691	LEU

*Continued on next page...*

*Continued from previous page...*

Mol	Chain	Res	Type
1	B	534	ARG
1	B	593	THR
1	B	715	ILE

Sometimes sidechains can be flipped to improve hydrogen bonding and reduce clashes. 5 of 9 such sidechains are listed below:

Mol	Chain	Res	Type
1	B	557	ASN
1	B	673	GLN
1	A	673	GLN
1	B	409	ASN
1	B	492	GLN

### 5.3.3 RNA ⓘ

There are no RNA molecules in this entry.

## 5.4 Non-standard residues in protein, DNA, RNA chains ⓘ

There are no non-standard protein/DNA/RNA residues in this entry.

## 5.5 Carbohydrates ⓘ

There are no oligosaccharides in this entry.

## 5.6 Ligand geometry ⓘ

Of 4 ligands modelled in this entry, 2 are monoatomic - leaving 2 for Mogul analysis.

In the following table, the Counts columns list the number of bonds (or angles) for which Mogul statistics could be retrieved, the number of bonds (or angles) that are observed in the model and the number of bonds (or angles) that are defined in the Chemical Component Dictionary. The Link column lists molecule types, if any, to which the group is linked. The Z score for a bond length (or angle) is the number of standard deviations the observed value is removed from the expected value. A bond length (or angle) with  $|Z| > 2$  is considered an outlier worth inspection. RMSZ is the root-mean-square of all Z scores of the bond lengths (or angles).

Mol	Type	Chain	Res	Link	Bond lengths			Bond angles		
					Counts	RMSZ	$\# Z  > 2$	Counts	RMSZ	$\# Z  > 2$
3	1B2	A	802	2	26,28,28	2.38	3 (11%)	36,41,41	2.25	7 (19%)

Mol	Type	Chain	Res	Link	Bond lengths			Bond angles		
					Counts	RMSZ	# Z  > 2	Counts	RMSZ	# Z  > 2
3	1B2	B	802	2	26,28,28	2.20	2 (7%)	36,41,41	2.50	9 (25%)

In the following table, the Chirals column lists the number of chiral outliers, the number of chiral centers analysed, the number of these observed in the model and the number defined in the Chemical Component Dictionary. Similar counts are reported in the Torsion and Rings columns. '-' means no outliers of that kind were identified.

Mol	Type	Chain	Res	Link	Chirals	Torsions	Rings
3	1B2	A	802	2	-	6/23/23/23	0/3/3/3
3	1B2	B	802	2	-	6/23/23/23	0/3/3/3

All (5) bond length outliers are listed below:

Mol	Chain	Res	Type	Atoms	Z	Observed(Å)	Ideal(Å)
3	A	802	1B2	C12-S9	-10.57	1.60	1.76
3	B	802	1B2	C12-S9	-10.02	1.61	1.76
3	A	802	1B2	N25-N24	2.76	1.43	1.37
3	A	802	1B2	C3-C4	-2.60	1.50	1.53
3	B	802	1B2	N25-N24	2.57	1.42	1.37

The worst 5 of 16 bond angle outliers are listed below:

Mol	Chain	Res	Type	Atoms	Z	Observed(°)	Ideal(°)
3	B	802	1B2	O11-S9-O10	-11.37	105.72	119.52
3	A	802	1B2	O11-S9-O10	-10.05	107.31	119.52
3	B	802	1B2	C22-C21-N24	3.98	136.67	130.19
3	A	802	1B2	C22-C21-N24	3.87	136.49	130.19
3	B	802	1B2	C26-C20-C21	3.20	111.73	104.74

There are no chirality outliers.

5 of 12 torsion outliers are listed below:

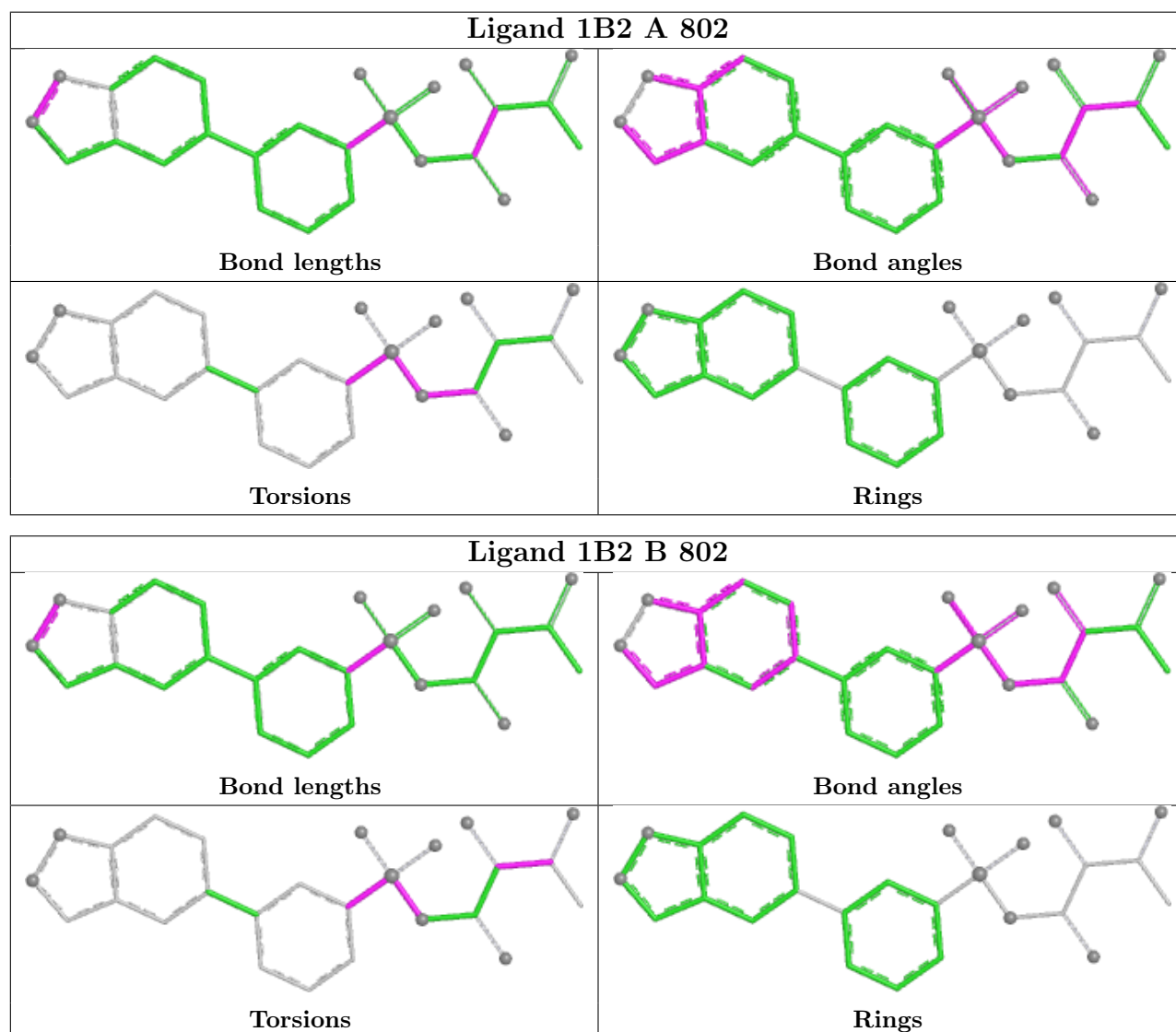
Mol	Chain	Res	Type	Atoms
3	A	802	1B2	C4-N5-S9-O10
3	A	802	1B2	C4-N5-S9-O11
3	A	802	1B2	C4-N5-S9-C12
3	B	802	1B2	C4-N5-S9-O10
3	B	802	1B2	C4-N5-S9-O11

There are no ring outliers.

1 monomer is involved in 5 short contacts:

Mol	Chain	Res	Type	Clashes	Symm-Clashes
3	A	802	1B2	5	0

The following is a two-dimensional graphical depiction of Mogul quality analysis of bond lengths, bond angles, torsion angles, and ring geometry for all instances of the Ligand of Interest. In addition, ligands with molecular weight > 250 and outliers as shown on the validation Tables will also be included. For torsion angles, if less than 5% of the Mogul distribution of torsion angles is within 10 degrees of the torsion angle in question, then that torsion angle is considered an outlier. Any bond that is central to one or more torsion angles identified as an outlier by Mogul will be highlighted in the graph. For rings, the root-mean-square deviation (RMSD) between the ring in question and similar rings identified by Mogul is calculated over all ring torsion angles. If the average RMSD is greater than 60 degrees and the minimal RMSD between the ring in question and any Mogul-identified rings is also greater than 60 degrees, then that ring is considered an outlier. The outliers are highlighted in purple. The color gray indicates Mogul did not find sufficient equivalents in the CSD to analyse the geometry.



## 5.7 Other polymers [i](#)

There are no such residues in this entry.

## 5.8 Polymer linkage issues [i](#)

There are no chain breaks in this entry.

## 6 Fit of model and data [i](#)

### 6.1 Protein, DNA and RNA chains [i](#)

In the following table, the column labelled ‘#RSRZ> 2’ contains the number (and percentage) of RSRZ outliers, followed by percent RSRZ outliers for the chain as percentile scores relative to all X-ray entries and entries of similar resolution. The OWAB column contains the minimum, median, 95<sup>th</sup> percentile and maximum values of the occupancy-weighted average B-factor per residue. The column labelled ‘Q< 0.9’ lists the number of (and percentage) of residues with an average occupancy less than 0.9.

Mol	Chain	Analysed	<RSRZ>	#RSRZ>2	OWAB(Å <sup>2</sup> )	Q<0.9
1	A	395/413 (95%)	-0.02	11 (2%) 55 56	28, 43, 79, 109	0
1	B	402/413 (97%)	-0.17	8 (1%) 64 66	29, 39, 64, 93	0
All	All	797/826 (96%)	-0.10	19 (2%) 59 61	28, 41, 73, 109	0

The worst 5 of 19 RSRZ outliers are listed below:

Mol	Chain	Res	Type	RSRZ
1	A	610	SER	4.4
1	A	752	ALA	4.4
1	B	751	GLN	4.2
1	B	752	ALA	4.0
1	A	478	LEU	3.5

### 6.2 Non-standard residues in protein, DNA, RNA chains [i](#)

There are no non-standard protein/DNA/RNA residues in this entry.

### 6.3 Carbohydrates [i](#)

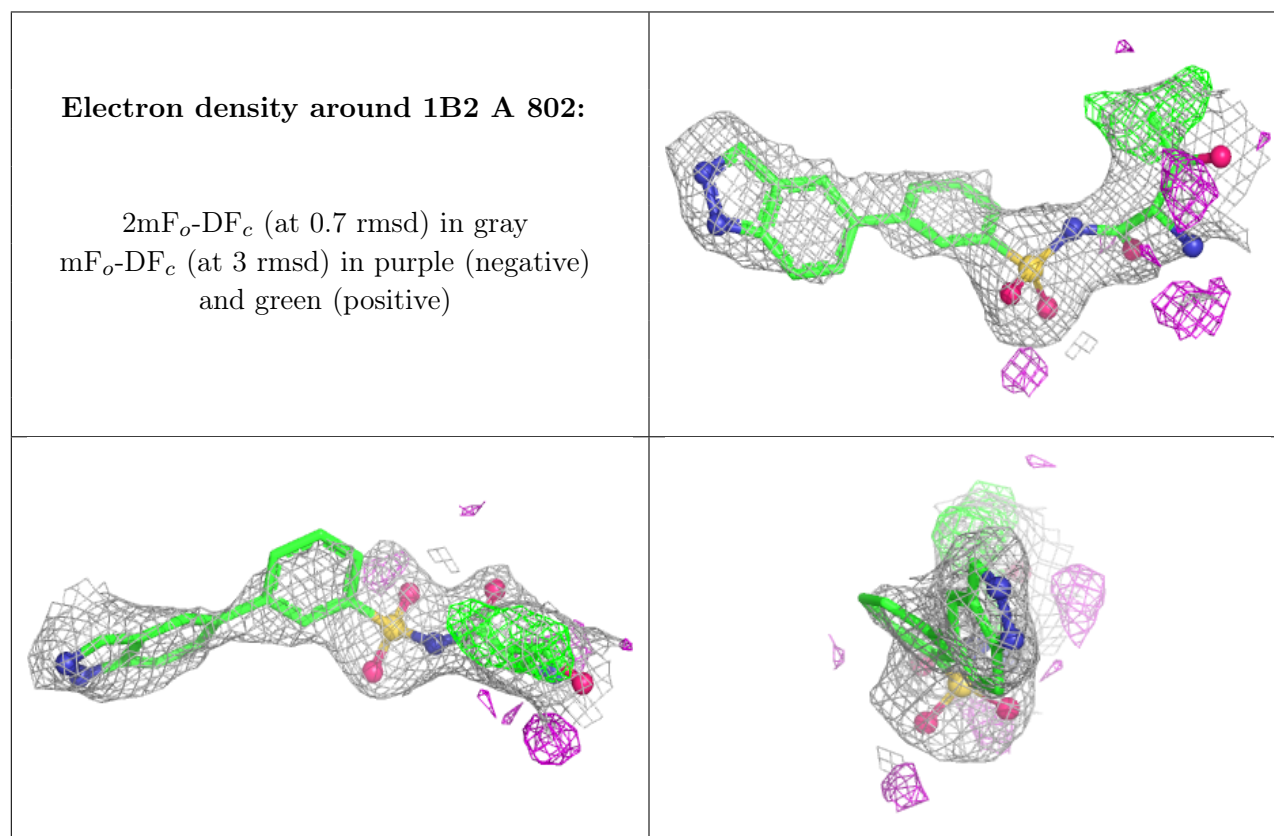
There are no monosaccharides in this entry.

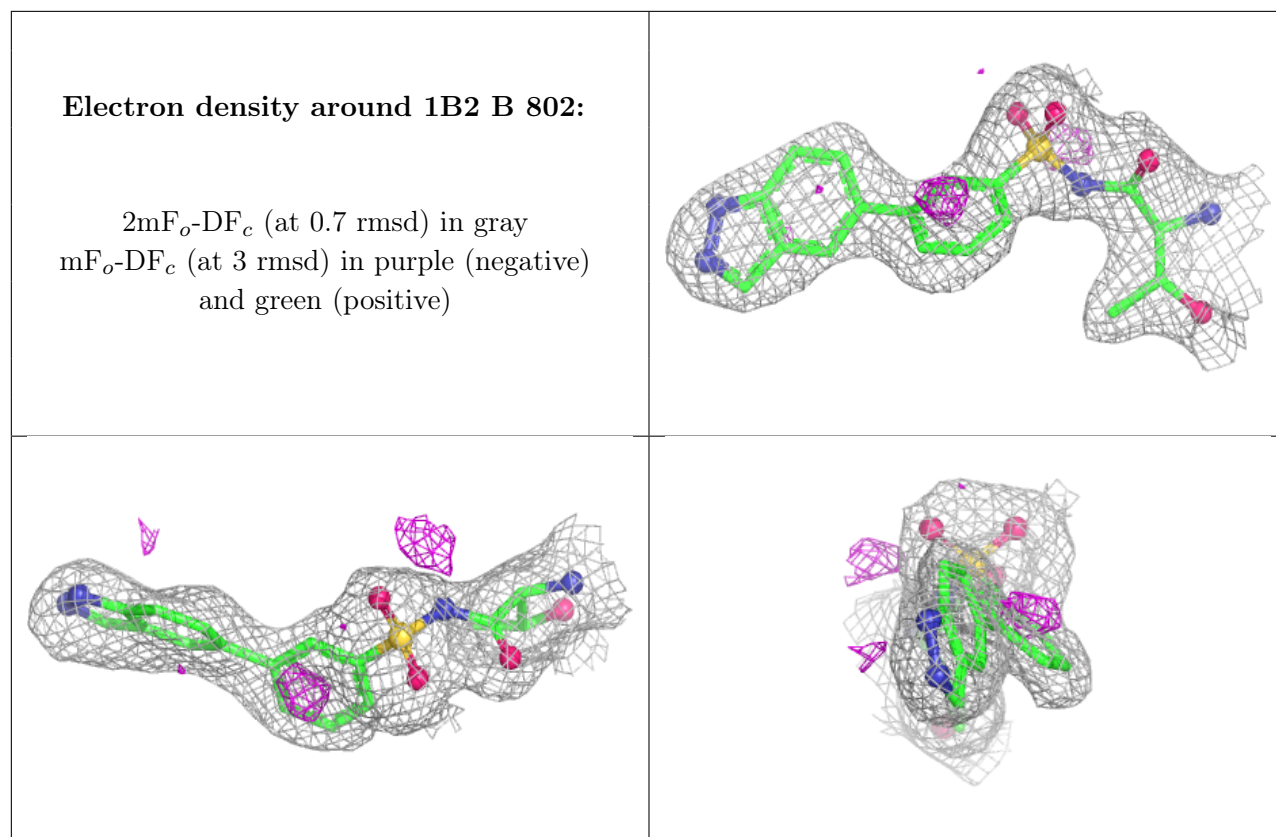
### 6.4 Ligands [i](#)

In the following table, the Atoms column lists the number of modelled atoms in the group and the number defined in the chemical component dictionary. The B-factors column lists the minimum, median, 95<sup>th</sup> percentile and maximum values of B factors of atoms in the group. The column labelled ‘Q< 0.9’ lists the number of atoms with occupancy less than 0.9.

Mol	Type	Chain	Res	Atoms	RSCC	RSR	B-factors( $\text{\AA}^2$ )	Q<0.9
3	1B2	A	802	26/26	0.86	0.15	59,68,98,103	0
3	1B2	B	802	26/26	0.92	0.12	46,54,60,62	0
2	ZN	A	801	1/1	0.99	0.04	49,49,49,49	0
2	ZN	B	801	1/1	0.99	0.02	40,40,40,40	0

The following is a graphical depiction of the model fit to experimental electron density of all instances of the Ligand of Interest. In addition, ligands with molecular weight > 250 and outliers as shown on the geometry validation Tables will also be included. Each fit is shown from different orientation to approximate a three-dimensional view.





## 6.5 Other polymers [i](#)

There are no such residues in this entry.