



wwPDB X-ray Structure Validation Summary Report ⓘ

Jun 22, 2024 – 01:04 PM EDT

PDB ID : 6HUR
Title : 2'-fucosyllactose and 3-fucosyllactose binding protein from Bifidobacterium longum infantis, bound with 2'-fucosyllactose
Authors : Ejby, M.; Abou Hachem, M.; Lo Leggio, L.; Katayama, T.; Sakanaka, M.
Deposited on : 2018-10-09
Resolution : 1.30 Å(reported)

This is a wwPDB X-ray Structure Validation Summary Report for a publicly released PDB entry.

We welcome your comments at validation@mail.wwpdb.org

A user guide is available at

<https://www.wwpdb.org/validation/2017/XrayValidationReportHelp>

with specific help available everywhere you see the ⓘ symbol.

The types of validation reports are described at

<http://www.wwpdb.org/validation/2017/FAQs#types>.

The following versions of software and data (see [references ⓘ](#)) were used in the production of this report:

MolProbity	:	4.02b-467
Mogul	:	2022.3.0, CSD as543be (2022)
Xtriage (Phenix)	:	1.20.1
EDS	:	2.37.1
Percentile statistics	:	20191225.v01 (using entries in the PDB archive December 25th 2019)
Refmac	:	5.8.0158
CCP4	:	7.0.044 (Gargrove)
Ideal geometry (proteins)	:	Engh & Huber (2001)
Ideal geometry (DNA, RNA)	:	Parkinson et al. (1996)
Validation Pipeline (wwPDB-VP)	:	2.37.1

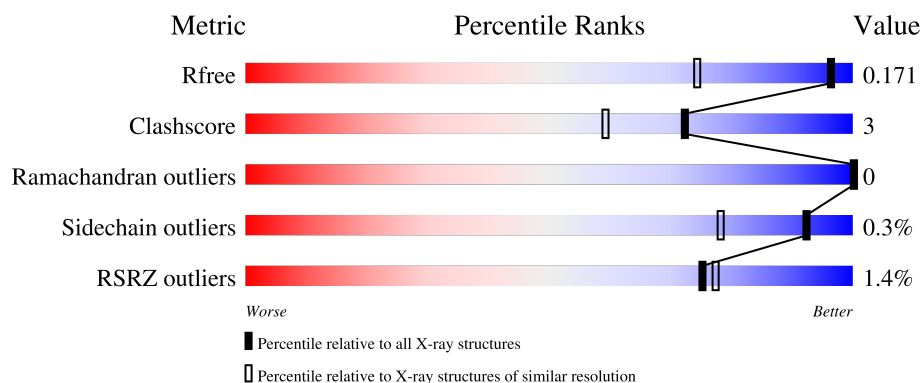
1 Overall quality at a glance

The following experimental techniques were used to determine the structure:

X-RAY DIFFRACTION

The reported resolution of this entry is 1.30 Å.

Percentile scores (ranging between 0-100) for global validation metrics of the entry are shown in the following graphic. The table shows the number of entries on which the scores are based.



Metric	Whole archive (#Entries)	Similar resolution (#Entries, resolution range(Å))
R_{free}	130704	1058 (1.30-1.30)
Clashscore	141614	1101 (1.30-1.30)
Ramachandran outliers	138981	1058 (1.30-1.30)
Sidechain outliers	138945	1058 (1.30-1.30)
RSRZ outliers	127900	1029 (1.30-1.30)

The table below summarises the geometric issues observed across the polymeric chains and their fit to the electron density. The red, orange, yellow and green segments of the lower bar indicate the fraction of residues that contain outliers for ≥ 3 , 2, 1 and 0 types of geometric quality criteria respectively. A grey segment represents the fraction of residues that are not modelled. The numeric value for each fraction is indicated below the corresponding segment, with a dot representing fractions $\leq 5\%$. The upper red bar (where present) indicates the fraction of residues that have poor fit to the electron density. The numeric value is given above the bar.

Mol	Chain	Length	Quality of chain
1	A	428	<div> <div style="width: 100%; height: 10px; background: linear-gradient(to right, red 5%, orange 15%, yellow 35%, green 60%);"></div> <div style="display: flex; justify-content: space-between; width: 100%;"> 5% 95% </div> </div>
2	B	3	<div> <div style="width: 100%; height: 10px; background: linear-gradient(to right, yellow 67%, orange 33%);"></div> <div style="display: flex; justify-content: space-between; width: 100%;"> 67% 33% </div> </div>

The following table lists non-polymeric compounds, carbohydrate monomers and non-standard residues in protein, DNA, RNA chains that are outliers for geometric or electron-density-fit criteria:

Mol	Type	Chain	Res	Chirality	Geometry	Clashes	Electron density
3	PG0	A	501	-	-	X	-
5	ZN	A	510	-	-	-	X

2 Entry composition [i](#)

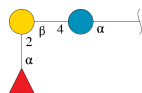
There are 7 unique types of molecules in this entry. The entry contains 7337 atoms, of which 3345 are hydrogens and 0 are deuteriums.

In the tables below, the ZeroOcc column contains the number of atoms modelled with zero occupancy, the AltConf column contains the number of residues with at least one atom in alternate conformation and the Trace column contains the number of residues modelled with at most 2 atoms.

- Molecule 1 is a protein called ABC transporter substrate-binding protein.

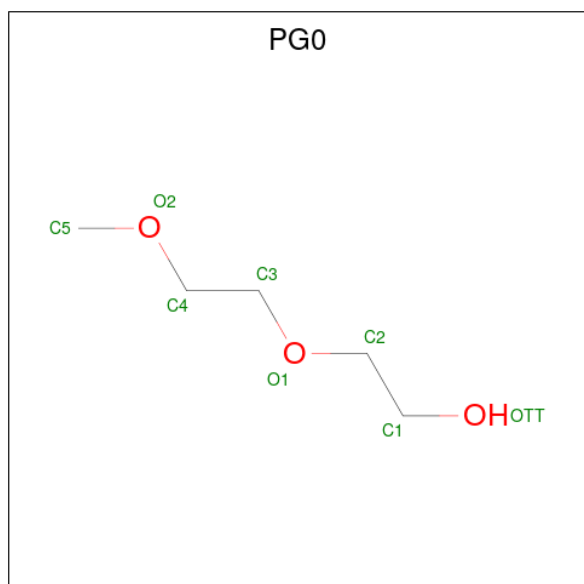
Mol	Chain	Residues	Atoms						ZeroOcc	AltConf	Trace
			Total	C	H	N	O	S			
1	A	428	6681	2161	3262	563	680	15	0	6	0

- Molecule 2 is an oligosaccharide called alpha-L-fucopyranose-(1-2)-beta-D-galactopyranose-(1-4)-alpha-D-glucopyranose.



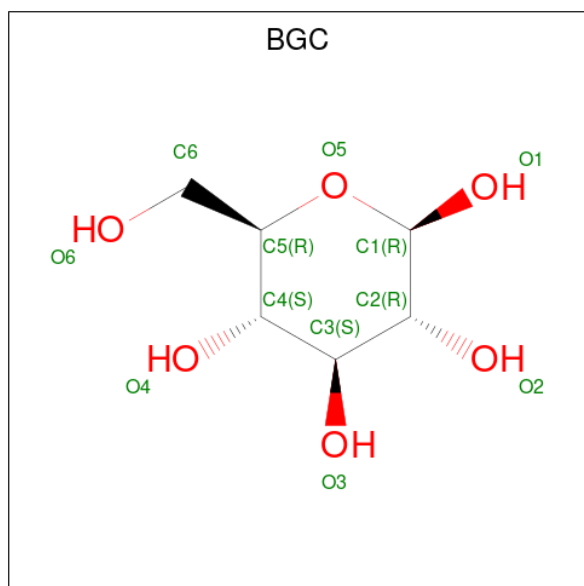
Mol	Chain	Residues	Atoms				ZeroOcc	AltConf	Trace
			Total	C	H	O			
2	B	3	67	18	34	15	0	1	0

- Molecule 3 is 2-(2-METHOXYETHOXY)ETHANOL (three-letter code: PG0) (formula: C₅H₁₂O₃).



Mol	Chain	Residues	Atoms				ZeroOcc	AltConf
3	A	1	Total	C	H	O	0	0
			19	5	11	3		

- Molecule 4 is beta-D-glucopyranose (three-letter code: BGC) (formula: $C_6H_{12}O_6$).

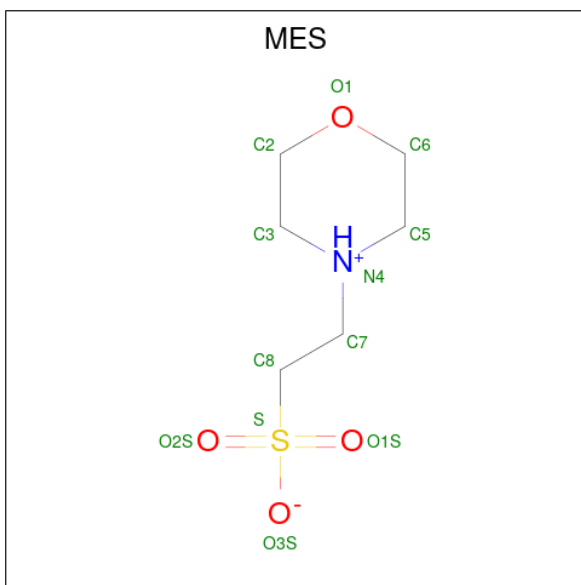


Mol	Chain	Residues	Atoms				ZeroOcc	AltConf
4	A	1	Total	C	H	O	0	1
			24	6	12	6		

- Molecule 5 is ZINC ION (three-letter code: ZN) (formula: Zn).

Mol	Chain	Residues	Atoms		ZeroOcc	AltConf
5	A	5	Total	Zn	0	0
			5	5		

- Molecule 6 is 2-(N-MORPHOLINO)-ETHANESULFONIC ACID (three-letter code: MES) (formula: $C_6H_{13}NO_4S$).



Mol	Chain	Residues	Atoms						ZeroOcc	AltConf
6	A	1	Total	C	H	N	O	S	0	0
			25	6	13	1	4	1		
6	A	1	Total	C	H	N	O	S	0	0
			25	6	13	1	4	1		

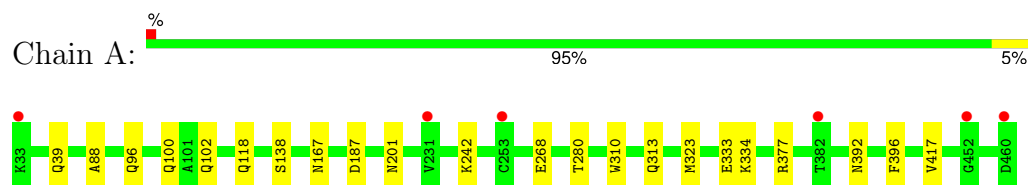
- Molecule 7 is water.

Mol	Chain	Residues	Atoms		ZeroOcc	AltConf
7	A	491	Total	O	0	0
			491	491		

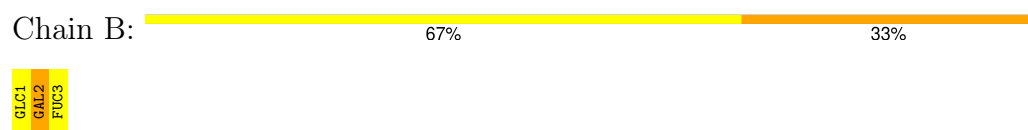
3 Residue-property plots [i](#)

These plots are drawn for all protein, RNA, DNA and oligosaccharide chains in the entry. The first graphic for a chain summarises the proportions of the various outlier classes displayed in the second graphic. The second graphic shows the sequence view annotated by issues in geometry and electron density. Residues are color-coded according to the number of geometric quality criteria for which they contain at least one outlier: green = 0, yellow = 1, orange = 2 and red = 3 or more. A red dot above a residue indicates a poor fit to the electron density ($RSRZ > 2$). Stretches of 2 or more consecutive residues without any outlier are shown as a green connector. Residues present in the sample, but not in the model, are shown in grey.

- Molecule 1: ABC transporter substrate-binding protein



- Molecule 2: alpha-L-fucopyranose-(1-2)-beta-D-galactopyranose-(1-4)-alpha-D-glucopyranose



4 Data and refinement statistics

Property	Value	Source
Space group	H 3	Depositor
Cell constants a, b, c, α , β , γ	134.00Å 134.00Å 59.70Å 90.00° 90.00° 120.00°	Depositor
Resolution (Å)	41.61 – 1.30 41.61 – 1.30	Depositor EDS
% Data completeness (in resolution range)	99.4 (41.61-1.30) 99.4 (41.61-1.30)	Depositor EDS
R_{merge}	0.07	Depositor
R_{sym}	(Not available)	Depositor
$\langle I/\sigma(I) \rangle$ ¹	0.97 (at 1.30Å)	Xtriage
Refinement program	PHENIX	Depositor
R, R_{free}	0.151 , 0.171 0.153 , 0.171	Depositor DCC
R_{free} test set	4923 reflections (5.00%)	wwPDB-VP
Wilson B-factor (Å ²)	17.8	Xtriage
Anisotropy	0.045	Xtriage
Bulk solvent k_{sol} (e/Å ³), B_{sol} (Å ²)	0.41 , 41.2	EDS
L-test for twinning ²	$\langle L \rangle = 0.50$, $\langle L^2 \rangle = 0.33$	Xtriage
Estimated twinning fraction	0.017 for h,-h-k,-l	Xtriage
F_o, F_c correlation	0.98	EDS
Total number of atoms	7337	wwPDB-VP
Average B, all atoms (Å ²)	21.0	wwPDB-VP

Xtriage's analysis on translational NCS is as follows: *The largest off-origin peak in the Patterson function is 4.41% of the height of the origin peak. No significant pseudotranslation is detected.*

¹Intensities estimated from amplitudes.

²Theoretical values of $\langle |L| \rangle$, $\langle L^2 \rangle$ for acentric reflections are 0.5, 0.333 respectively for untwinned datasets, and 0.375, 0.2 for perfectly twinned datasets.

5 Model quality [i](#)

5.1 Standard geometry [i](#)

Bond lengths and bond angles in the following residue types are not validated in this section: BGC, ZN, FUC, PG0, GLC, GAL, MES

The Z score for a bond length (or angle) is the number of standard deviations the observed value is removed from the expected value. A bond length (or angle) with $|Z| > 5$ is considered an outlier worth inspection. RMSZ is the root-mean-square of all Z scores of the bond lengths (or angles).

Mol	Chain	Bond lengths		Bond angles	
		RMSZ	$\# Z > 5$	RMSZ	$\# Z > 5$
1	A	0.45	0/3513	0.68	2/4761 (0.0%)

There are no bond length outliers.

All (2) bond angle outliers are listed below:

Mol	Chain	Res	Type	Atoms	Z	Observed(°)	Ideal(°)
1	A	323	MET	CG-SD-CE	-7.36	88.43	100.20
1	A	268	GLU	OE1-CD-OE2	-5.59	116.59	123.30

There are no chirality outliers.

There are no planarity outliers.

5.2 Too-close contacts [i](#)

In the following table, the Non-H and H(model) columns list the number of non-hydrogen atoms and hydrogen atoms in the chain respectively. The H(added) column lists the number of hydrogen atoms added and optimized by MolProbity. The Clashes column lists the number of clashes within the asymmetric unit, whereas Symm-Clashes lists symmetry-related clashes.

Mol	Chain	Non-H	H(model)	H(added)	Clashes	Symm-Clashes
1	A	3419	3262	3271	20	2
2	B	33	34	25	4	0
3	A	8	11	12	6	0
4	A	12	12	6	3	0
5	A	5	0	0	0	0
6	A	24	26	24	1	0
7	A	491	0	0	6	5
All	All	3992	3345	3338	23	6

The all-atom clashscore is defined as the number of clashes found per 1000 atoms (including hydrogen atoms). The all-atom clashscore for this structure is 3.

The worst 5 of 23 close contacts within the same asymmetric unit are listed below, sorted by their clash magnitude.

Atom-1	Atom-2	Interatomic distance (Å)	Clash overlap (Å)
4:A:505[B]:BGC:O4	2:B:2:GAL:C1	1.70	1.38
1:A:201[B]:ASN:ND2	7:A:601:HOH:O	2.05	0.86
1:A:417:VAL:HG13	6:A:511:MES:H81	1.78	0.66
1:A:334:LYS:NZ	7:A:604:HOH:O	2.28	0.66
1:A:118:GLN:HG2	3:A:501:PG0:C4	2.29	0.63

The worst 5 of 6 symmetry-related close contacts are listed below. The label for Atom-2 includes the symmetry operator and encoded unit-cell translations to be applied.

Atom-1	Atom-2	Interatomic distance (Å)	Clash overlap (Å)
7:A:680:HOH:O	7:A:925:HOH:O[6_564]	1.87	0.33
7:A:766:HOH:O	7:A:829:HOH:O[8_654]	1.91	0.29
1:A:39:GLN:HE21	7:A:602:HOH:O[5_555]	1.49	0.11
1:A:187:ASP:OD2	1:A:333:GLU:OE2[1_554]	2.14	0.06
7:A:861:HOH:O	7:A:936:HOH:O[9_554]	2.15	0.05

5.3 Torsion angles [i](#)

5.3.1 Protein backbone [i](#)

In the following table, the Percentiles column shows the percent Ramachandran outliers of the chain as a percentile score with respect to all X-ray entries followed by that with respect to entries of similar resolution.

The Analysed column shows the number of residues for which the backbone conformation was analysed, and the total number of residues.

Mol	Chain	Analysed	Favoured	Allowed	Outliers	Percentiles	
1	A	432/428 (101%)	423 (98%)	9 (2%)	0	100	100

There are no Ramachandran outliers to report.

5.3.2 Protein sidechains [i](#)

In the following table, the Percentiles column shows the percent sidechain outliers of the chain as a percentile score with respect to all X-ray entries followed by that with respect to entries of similar resolution.

The Analysed column shows the number of residues for which the sidechain conformation was analysed, and the total number of residues.

Mol	Chain	Analysed	Rotameric	Outliers	Percentiles	
1	A	370/364 (102%)	369 (100%)	1 (0%)	92	78

All (1) residues with a non-rotameric sidechain are listed below:

Mol	Chain	Res	Type
1	A	392	ASN

Sometimes sidechains can be flipped to improve hydrogen bonding and reduce clashes. There are no such sidechains identified.

5.3.3 RNA [i](#)

There are no RNA molecules in this entry.

5.4 Non-standard residues in protein, DNA, RNA chains [i](#)

There are no non-standard protein/DNA/RNA residues in this entry.

5.5 Carbohydrates [i](#)

3 monosaccharides are modelled in this entry.

In the following table, the Counts columns list the number of bonds (or angles) for which Mogul statistics could be retrieved, the number of bonds (or angles) that are observed in the model and the number of bonds (or angles) that are defined in the Chemical Component Dictionary. The Link column lists molecule types, if any, to which the group is linked. The Z score for a bond length (or angle) is the number of standard deviations the observed value is removed from the expected value. A bond length (or angle) with $|Z| > 2$ is considered an outlier worth inspection. RMSZ is the root-mean-square of all Z scores of the bond lengths (or angles).

Mol	Type	Chain	Res	Link	Bond lengths			Bond angles		
					Counts	RMSZ	$\# Z > 2$	Counts	RMSZ	$\# Z > 2$
2	GLC	B	1[A]	2	12,12,12	0.46	0	17,17,17	0.49	0

Mol	Type	Chain	Res	Link	Bond lengths			Bond angles		
					Counts	RMSZ	# Z > 2	Counts	RMSZ	# Z > 2
2	GAL	B	2	2	11,11,12	1.07	0	15,15,17	0.95	1 (6%)
2	FUC	B	3	2	10,10,11	0.74	1 (10%)	14,14,16	1.02	0

In the following table, the Chirals column lists the number of chiral outliers, the number of chiral centers analysed, the number of these observed in the model and the number defined in the Chemical Component Dictionary. Similar counts are reported in the Torsion and Rings columns. '-' means no outliers of that kind were identified.

Mol	Type	Chain	Res	Link	Chirals	Torsions	Rings
2	GLC	B	1[A]	2	-	2/2/22/22	0/1/1/1
2	GAL	B	2	2	-	0/2/19/22	0/1/1/1
2	FUC	B	3	2	-	-	0/1/1/1

All (1) bond length outliers are listed below:

Mol	Chain	Res	Type	Atoms	Z	Observed(Å)	Ideal(Å)
2	B	3	FUC	O5-C5	2.13	1.47	1.43

All (1) bond angle outliers are listed below:

Mol	Chain	Res	Type	Atoms	Z	Observed(°)	Ideal(°)
2	B	2	GAL	O5-C5-C4	-2.02	105.91	110.83

There are no chirality outliers.

All (2) torsion outliers are listed below:

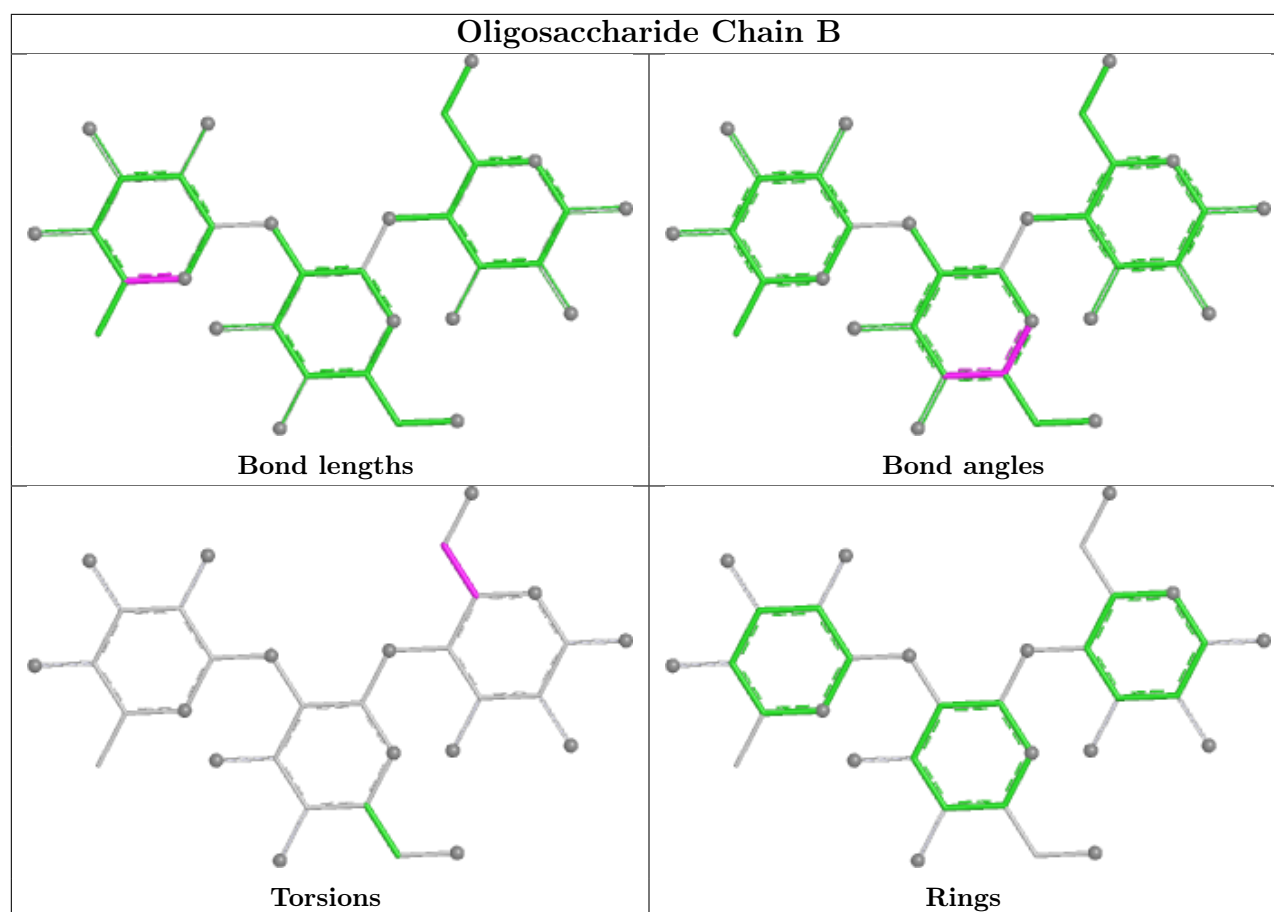
Mol	Chain	Res	Type	Atoms
2	B	1[A]	GLC	C4-C5-C6-O6
2	B	1[A]	GLC	O5-C5-C6-O6

There are no ring outliers.

2 monomers are involved in 4 short contacts:

Mol	Chain	Res	Type	Clashes	Symm-Clashes
2	B	1[A]	GLC	1	0
2	B	2	GAL	3	0

The following is a two-dimensional graphical depiction of Mogul quality analysis of bond lengths, bond angles, torsion angles, and ring geometry for oligosaccharide.



5.6 Ligand geometry [i](#)

Of 9 ligands modelled in this entry, 5 are monoatomic - leaving 4 for Mogul analysis.

In the following table, the Counts columns list the number of bonds (or angles) for which Mogul statistics could be retrieved, the number of bonds (or angles) that are observed in the model and the number of bonds (or angles) that are defined in the Chemical Component Dictionary. The Link column lists molecule types, if any, to which the group is linked. The Z score for a bond length (or angle) is the number of standard deviations the observed value is removed from the expected value. A bond length (or angle) with $|Z| > 2$ is considered an outlier worth inspection. RMSZ is the root-mean-square of all Z scores of the bond lengths (or angles).

Mol	Type	Chain	Res	Link	Bond lengths			Bond angles		
					Counts	RMSZ	# $ Z > 2$	Counts	RMSZ	# $ Z > 2$
6	MES	A	512	-	12,12,12	2.02	2 (16%)	15,16,16	2.01	5 (33%)
6	MES	A	511	-	12,12,12	1.96	1 (8%)	15,16,16	1.53	4 (26%)
4	BGC	A	505[B]	-	12,12,12	0.74	0	17,17,17	2.41	6 (35%)
3	PG0	A	501	-	7,7,7	0.39	0	6,6,6	0.54	0

In the following table, the Chirals column lists the number of chiral outliers, the number of chiral centers analysed, the number of these observed in the model and the number defined in the

Chemical Component Dictionary. Similar counts are reported in the Torsion and Rings columns. '-' means no outliers of that kind were identified.

Mol	Type	Chain	Res	Link	Chirals	Torsions	Rings
6	MES	A	512	-	-	1/6/14/14	0/1/1/1
6	MES	A	511	-	-	1/6/14/14	0/1/1/1
4	BGC	A	505[B]	-	-	1/2/22/22	0/1/1/1
3	PG0	A	501	-	-	1/5/5/5	-

All (3) bond length outliers are listed below:

Mol	Chain	Res	Type	Atoms	Z	Observed(Å)	Ideal(Å)
6	A	511	MES	C8-S	-6.40	1.68	1.77
6	A	512	MES	C8-S	-5.67	1.69	1.77
6	A	512	MES	C7-N4	3.39	1.55	1.47

The worst 5 of 15 bond angle outliers are listed below:

Mol	Chain	Res	Type	Atoms	Z	Observed(°)	Ideal(°)
4	A	505[B]	BGC	C3-C4-C5	5.05	119.39	110.23
6	A	512	MES	C7-N4-C3	5.04	124.67	111.24
4	A	505[B]	BGC	O4-C4-C3	-4.53	99.70	110.38
4	A	505[B]	BGC	O5-C1-C2	4.26	117.79	110.30
4	A	505[B]	BGC	O4-C4-C5	-3.27	101.27	109.32

There are no chirality outliers.

All (4) torsion outliers are listed below:

Mol	Chain	Res	Type	Atoms
6	A	512	MES	C8-C7-N4-C3
3	A	501	PG0	O1-C3-C4-O2
4	A	505[B]	BGC	C4-C5-C6-O6
6	A	511	MES	C8-C7-N4-C3

There are no ring outliers.

3 monomers are involved in 10 short contacts:

Mol	Chain	Res	Type	Clashes	Symm-Clashes
6	A	511	MES	1	0
4	A	505[B]	BGC	3	0
3	A	501	PG0	6	0

5.7 Other polymers [i](#)

There are no such residues in this entry.

5.8 Polymer linkage issues [i](#)

There are no chain breaks in this entry.

6 Fit of model and data [i](#)

6.1 Protein, DNA and RNA chains [i](#)

In the following table, the column labelled ‘#RSRZ > 2’ contains the number (and percentage) of RSRZ outliers, followed by percent RSRZ outliers for the chain as percentile scores relative to all X-ray entries and entries of similar resolution. The OWAB column contains the minimum, median, 95th percentile and maximum values of the occupancy-weighted average B-factor per residue. The column labelled ‘Q < 0.9’ lists the number of (and percentage) of residues with an average occupancy less than 0.9.

Mol	Chain	Analysed	<RSRZ>	#RSRZ>2	OWAB(Å ²)	Q<0.9
1	A	428/428 (100%)	-0.06	6 (1%) 75 77	13, 17, 29, 49	0

The worst 5 of 6 RSRZ outliers are listed below:

Mol	Chain	Res	Type	RSRZ
1	A	33	LYS	4.9
1	A	253	CYS	4.5
1	A	382	THR	3.2
1	A	452	GLY	3.1
1	A	231	VAL	3.0

6.2 Non-standard residues in protein, DNA, RNA chains [i](#)

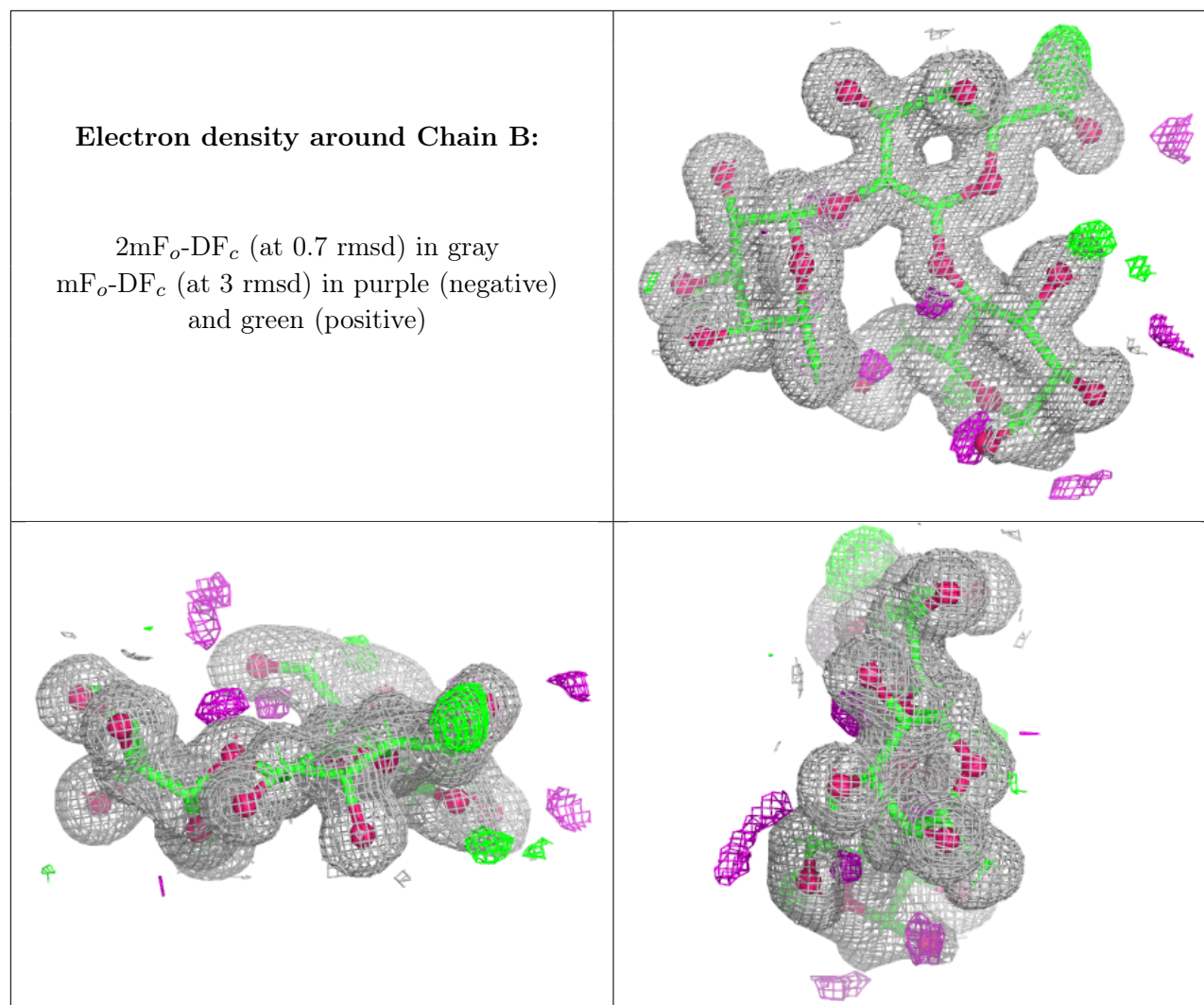
There are no non-standard protein/DNA/RNA residues in this entry.

6.3 Carbohydrates [i](#)

In the following table, the Atoms column lists the number of modelled atoms in the group and the number defined in the chemical component dictionary. The B-factors column lists the minimum, median, 95th percentile and maximum values of B factors of atoms in the group. The column labelled ‘Q < 0.9’ lists the number of atoms with occupancy less than 0.9.

Mol	Type	Chain	Res	Atoms	RSCC	RSR	B-factors(Å ²)	Q<0.9
2	GLC	B	1[A]	12/12	0.95	0.09	12,26,33,37	24
2	GAL	B	2	11/12	0.98	0.07	11,14,17,28	0
2	FUC	B	3	10/11	0.99	0.08	12,15,18,18	0

The following is a graphical depiction of the model fit to experimental electron density for oligosaccharide. Each fit is shown from different orientation to approximate a three-dimensional view.



6.4 Ligands ⓘ

In the following table, the Atoms column lists the number of modelled atoms in the group and the number defined in the chemical component dictionary. The B-factors column lists the minimum, median, 95th percentile and maximum values of B factors of atoms in the group. The column labelled 'Q< 0.9' lists the number of atoms with occupancy less than 0.9.

Mol	Type	Chain	Res	Atoms	RSCC	RSR	B-factors(Å ²)	Q<0.9
5	ZN	A	510	1/1	0.58	0.43	105,105,105,105	1
3	PG0	A	501	8/8	0.78	0.19	35,42,51,59	0
6	MES	A	512	12/12	0.83	0.34	27,44,53,60	0
6	MES	A	511	12/12	0.93	0.12	22,31,36,36	25
4	BGC	A	505[B]	12/12	0.94	0.09	20,28,34,37	24
5	ZN	A	506	1/1	0.97	0.06	25,25,25,25	1
5	ZN	A	507	1/1	0.99	0.07	16,16,16,16	1
5	ZN	A	508	1/1	0.99	0.05	18,18,18,18	1
5	ZN	A	509	1/1	0.99	0.08	17,17,17,17	1

6.5 Other polymers [i](#)

There are no such residues in this entry.