



Full wwPDB X-ray Structure Validation Report ⓘ

Jun 10, 2025 – 01:37 pm BST

PDB ID : 9HRT / pdb_00009hrt
Title : Structure of human PD-L1 in complex with clinically evaluated inhibitor
Authors : Slota, A.; Golebiowska-Mendroch, K.; Plewka, J.; Magiera-Mularz, K.
Deposited on : 2024-12-18
Resolution : 2.30 Å(reported)

This is a Full wwPDB X-ray Structure Validation Report for a publicly released PDB entry.

We welcome your comments at validation@mail.wwpdb.org

A user guide is available at

<https://www.wwpdb.org/validation/2017/XrayValidationReportHelp>

with specific help available everywhere you see the ⓘ symbol.

The types of validation reports are described at

<http://www.wwpdb.org/validation/2017/FAQs#types>.

The following versions of software and data (see [references ⓘ](#)) were used in the production of this report:

MolProbity : 4-5-2 with Phenix2.0rc1
Mogul : 1.8.4, CSD as541be (2020)
Xtriage (Phenix) : 2.0rc1
EDS : 3.0
buster-report : 1.1.7 (2018)
Percentile statistics : 20231227.v01 (using entries in the PDB archive December 27th 2023)
CCP4 : 9.0.003 (Gargrove)
Density-Fitness : 1.0.11
Ideal geometry (proteins) : Engh & Huber (2001)
Ideal geometry (DNA, RNA) : Parkinson et al. (1996)
Validation Pipeline (wwPDB-VP) : 2.43.1

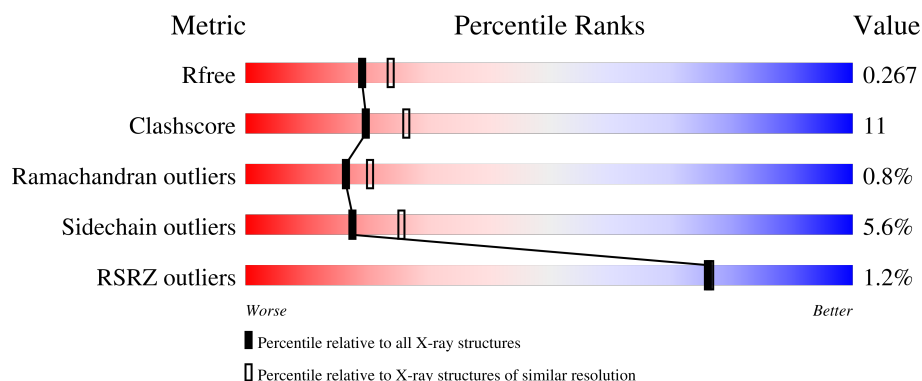
1 Overall quality at a glance

The following experimental techniques were used to determine the structure:

X-RAY DIFFRACTION

The reported resolution of this entry is 2.30 Å.

Percentile scores (ranging between 0-100) for global validation metrics of the entry are shown in the following graphic. The table shows the number of entries on which the scores are based.



Metric	Whole archive (#Entries)	Similar resolution (#Entries, resolution range(Å))
R_{free}	164625	5963 (2.30-2.30)
Clashscore	180529	6698 (2.30-2.30)
Ramachandran outliers	177936	6640 (2.30-2.30)
Sidechain outliers	177891	6640 (2.30-2.30)
RSRZ outliers	164620	5963 (2.30-2.30)

The table below summarises the geometric issues observed across the polymeric chains and their fit to the electron density. The red, orange, yellow and green segments of the lower bar indicate the fraction of residues that contain outliers for ≥ 3 , 2, 1 and 0 types of geometric quality criteria respectively. A grey segment represents the fraction of residues that are not modelled. The numeric value for each fraction is indicated below the corresponding segment, with a dot representing fractions $\leq 5\%$. The upper red bar (where present) indicates the fraction of residues that have poor fit to the electron density. The numeric value is given above the bar.

Mol	Chain	Length	Quality of chain
1	A	131	<div> <div>2%</div> <div> <div></div> <div>66%</div> <div>24%</div> <div>• • •</div> </div> </div>
1	B	131	<div> <div>%</div> <div> <div></div> <div>69%</div> <div>22%</div> <div>• • •</div> </div> </div>

2 Entry composition

There are 3 unique types of molecules in this entry. The entry contains 2100 atoms, of which 0 are hydrogens and 0 are deuteriums.

In the tables below, the ZeroOcc column contains the number of atoms modelled with zero occupancy, the AltConf column contains the number of residues with at least one atom in alternate conformation and the Trace column contains the number of residues modelled with at most 2 atoms.

- Molecule 1 is a protein called Programmed cell death 1 ligand 1.

Mol	Chain	Residues	Atoms					ZeroOcc	AltConf	Trace
1	A	126	Total	C	N	O	S	0	0	0
			1012	646	174	187	5			
1	B	126	Total	C	N	O	S	0	0	0
			1012	646	174	187	5			

There are 28 discrepancies between the modelled and reference sequences:

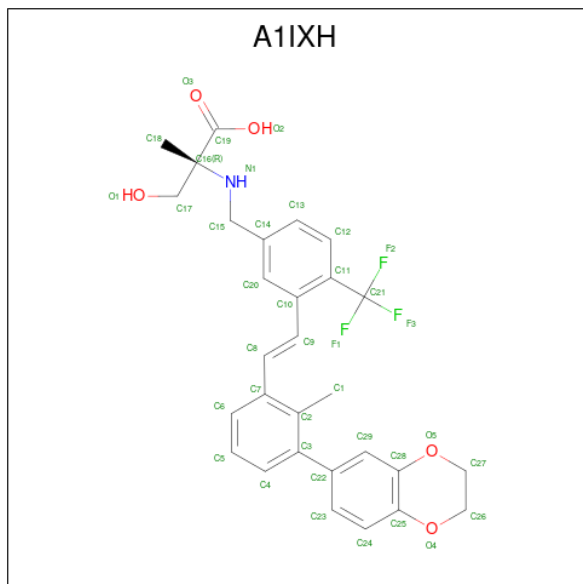
Chain	Residue	Modelled	Actual	Comment	Reference
A	1	MET	-	initiating methionine	UNP Q9NZQ7
A	2	GLY	-	expression tag	UNP Q9NZQ7
A	3	SER	-	expression tag	UNP Q9NZQ7
A	121	ALA	-	expression tag	UNP Q9NZQ7
A	122	ALA	-	expression tag	UNP Q9NZQ7
A	123	ALA	-	expression tag	UNP Q9NZQ7
A	124	LEU	-	expression tag	UNP Q9NZQ7
A	125	GLU	-	expression tag	UNP Q9NZQ7
A	126	HIS	-	expression tag	UNP Q9NZQ7
A	127	HIS	-	expression tag	UNP Q9NZQ7
A	128	HIS	-	expression tag	UNP Q9NZQ7
A	129	HIS	-	expression tag	UNP Q9NZQ7
A	130	HIS	-	expression tag	UNP Q9NZQ7
A	131	HIS	-	expression tag	UNP Q9NZQ7
B	1	MET	-	initiating methionine	UNP Q9NZQ7
B	2	GLY	-	expression tag	UNP Q9NZQ7
B	3	SER	-	expression tag	UNP Q9NZQ7
B	121	ALA	-	expression tag	UNP Q9NZQ7
B	122	ALA	-	expression tag	UNP Q9NZQ7
B	123	ALA	-	expression tag	UNP Q9NZQ7
B	124	LEU	-	expression tag	UNP Q9NZQ7
B	125	GLU	-	expression tag	UNP Q9NZQ7
B	126	HIS	-	expression tag	UNP Q9NZQ7
B	127	HIS	-	expression tag	UNP Q9NZQ7
B	128	HIS	-	expression tag	UNP Q9NZQ7

Continued on next page...

Continued from previous page...

Chain	Residue	Modelled	Actual	Comment	Reference
B	129	HIS	-	expression tag	UNP Q9NZQ7
B	130	HIS	-	expression tag	UNP Q9NZQ7
B	131	HIS	-	expression tag	UNP Q9NZQ7

- Molecule 2 is (2 {R})-2-[[3-[({E})-2-[3-(2,3-dihydro-1,4-benzodioxin-6-yl)-2-methyl-phenyl]ethenyl]-4-(trifluoromethyl)phenyl]methylamino]-2-methyl-3-oxidanyl-propanoic acid (CCD ID: A1IXH) (formula: C₂₉H₂₈F₃NO₅) (labeled as "Ligand of Interest" by depositor).



Mol	Chain	Residues	Atoms				ZeroOcc	AltConf
2	B	1	Total	C	F	N	O	
			38	29	3	1	5	0

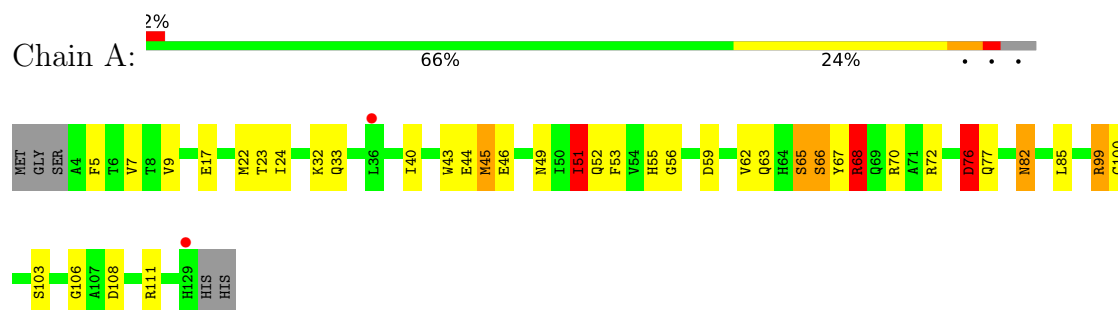
- Molecule 3 is water.

Mol	Chain	Residues	Atoms		ZeroOcc	AltConf
3	A	24	Total	O		
			24	24	0	0
3	B	14	Total	O		
			14	14	0	0

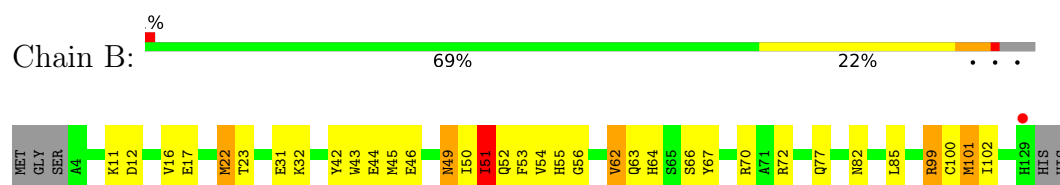
3 Residue-property plots [i](#)

These plots are drawn for all protein, RNA, DNA and oligosaccharide chains in the entry. The first graphic for a chain summarises the proportions of the various outlier classes displayed in the second graphic. The second graphic shows the sequence view annotated by issues in geometry and electron density. Residues are color-coded according to the number of geometric quality criteria for which they contain at least one outlier: green = 0, yellow = 1, orange = 2 and red = 3 or more. A red dot above a residue indicates a poor fit to the electron density ($RSRZ > 2$). Stretches of 2 or more consecutive residues without any outlier are shown as a green connector. Residues present in the sample, but not in the model, are shown in grey.

- Molecule 1: Programmed cell death 1 ligand 1



- Molecule 1: Programmed cell death 1 ligand 1



4 Data and refinement statistics

Property	Value	Source
Space group	P 21 2 21	Depositor
Cell constants a, b, c, α , β , γ	50.86Å 52.03Å 111.32Å 90.00° 90.00° 90.00°	Depositor
Resolution (Å)	47.18 – 2.30 47.18 – 2.30	Depositor EDS
% Data completeness (in resolution range)	96.9 (47.18-2.30) 96.9 (47.18-2.30)	Depositor EDS
R_{merge}	0.16	Depositor
R_{sym}	(Not available)	Depositor
$\langle I/\sigma(I) \rangle$ ¹	1.73 (at 2.29Å)	Xtriage
Refinement program	REFMAC v5.5.0110	Depositor
R, R_{free}	0.207 , 0.263 0.216 , 0.267	Depositor DCC
R_{free} test set	631 reflections (4.75%)	wwPDB-VP
Wilson B-factor (Å ²)	42.6	Xtriage
Anisotropy	0.691	Xtriage
Bulk solvent k_{sol} (e/Å ³), B_{sol} (Å ²)	0.34 , 43.6	EDS
L-test for twinning ²	$\langle L \rangle = 0.49$, $\langle L^2 \rangle = 0.32$	Xtriage
Estimated twinning fraction	0.037 for k,h,-l	Xtriage
F_o, F_c correlation	0.95	EDS
Total number of atoms	2100	wwPDB-VP
Average B, all atoms (Å ²)	54.0	wwPDB-VP

Xtriage's analysis on translational NCS is as follows: *The largest off-origin peak in the Patterson function is 6.91% of the height of the origin peak. No significant pseudotranslation is detected.*

¹Intensities estimated from amplitudes.

²Theoretical values of $\langle |L| \rangle$, $\langle L^2 \rangle$ for acentric reflections are 0.5, 0.333 respectively for untwinned datasets, and 0.375, 0.2 for perfectly twinned datasets.

5 Model quality

5.1 Standard geometry

Bond lengths and bond angles in the following residue types are not validated in this section: A1IXH

The Z score for a bond length (or angle) is the number of standard deviations the observed value is removed from the expected value. A bond length (or angle) with $|Z| > 5$ is considered an outlier worth inspection. RMSZ is the root-mean-square of all Z scores of the bond lengths (or angles).

Mol	Chain	Bond lengths		Bond angles	
		RMSZ	$\# Z > 5$	RMSZ	$\# Z > 5$
1	A	0.94	2/1033 (0.2%)	1.31	9/1398 (0.6%)
1	B	1.04	4/1033 (0.4%)	1.29	5/1398 (0.4%)
All	All	0.99	6/2066 (0.3%)	1.30	14/2796 (0.5%)

Chiral center outliers are detected by calculating the chiral volume of a chiral center and verifying if the center is modelled as a planar moiety or with the opposite hand. A planarity outlier is detected by checking planarity of atoms in a peptide group, atoms in a mainchain group or atoms of a sidechain that are expected to be planar.

Mol	Chain	#Chirality outliers	#Planarity outliers
1	A	1	4
1	B	0	3
All	All	1	7

All (6) bond length outliers are listed below:

Mol	Chain	Res	Type	Atoms	Z	Observed(Å)	Ideal(Å)
1	B	101	MET	SD-CE	-11.15	1.51	1.79
1	A	45	MET	SD-CE	-6.82	1.62	1.79
1	B	22	MET	SD-CE	-6.61	1.63	1.79
1	B	102	ILE	CG1-CD1	-6.13	1.27	1.51
1	B	51	ILE	CG1-CD1	-6.00	1.28	1.51
1	A	51	ILE	CG1-CD1	-5.39	1.30	1.51

All (14) bond angle outliers are listed below:

Mol	Chain	Res	Type	Atoms	Z	Observed(°)	Ideal(°)
1	A	76	ASP	CA-CB-CG	6.96	119.56	112.60
1	A	46	GLU	CB-CG-CD	6.89	124.32	112.60
1	B	49	ASN	OD1-CG-ND2	-6.72	115.88	122.60

Continued on next page...

Continued from previous page...

Mol	Chain	Res	Type	Atoms	Z	Observed(°)	Ideal(°)
1	A	49	ASN	CA-CB-CG	6.14	118.74	112.60
1	A	52	GLN	OE1-CD-NE2	-5.92	116.68	122.60
1	B	62	VAL	N-CA-CB	-5.56	102.73	112.08
1	B	55	HIS	CB-CA-C	-5.52	103.67	111.95
1	A	9	VAL	CA-C-O	5.50	122.92	119.51
1	A	17	GLU	CB-CG-CD	5.45	121.87	112.60
1	B	46	GLU	CB-CG-CD	5.40	121.78	112.60
1	A	33	GLN	N-CA-C	5.29	117.99	108.48
1	B	17	GLU	CB-CG-CD	5.22	121.48	112.60
1	A	82	ASN	OD1-CG-ND2	-5.17	117.43	122.60
1	A	55	HIS	CB-CA-C	-5.01	104.77	111.89

All (1) chirality outliers are listed below:

Mol	Chain	Res	Type	Atom
1	A	65	SER	CA

All (7) planarity outliers are listed below:

Mol	Chain	Res	Type	Group
1	A	111	ARG	Sidechain
1	A	68	ARG	Sidechain
1	A	72	ARG	Sidechain
1	A	99	ARG	Sidechain
1	B	70	ARG	Sidechain
1	B	72	ARG	Sidechain
1	B	99	ARG	Sidechain

5.2 Too-close contacts [i](#)

In the following table, the Non-H and H(model) columns list the number of non-hydrogen atoms and hydrogen atoms in the chain respectively. The H(added) column lists the number of hydrogen atoms added and optimized by MolProbity. The Clashes column lists the number of clashes within the asymmetric unit, whereas Symm-Clashes lists symmetry-related clashes.

Mol	Chain	Non-H	H(model)	H(added)	Clashes	Symm-Clashes
1	A	1012	0	1003	24	0
1	B	1012	0	1003	21	0
2	B	38	0	0	2	0
3	A	24	0	0	3	0
3	B	14	0	0	0	0

Continued on next page...

Continued from previous page...

Mol	Chain	Non-H	H(model)	H(added)	Clashes	Symm-Clashes
All	All	2100	0	2006	46	0

The all-atom clashscore is defined as the number of clashes found per 1000 atoms (including hydrogen atoms). The all-atom clashscore for this structure is 11.

All (46) close contacts within the same asymmetric unit are listed below, sorted by their clash magnitude.

Atom-1	Atom-2	Interatomic distance (Å)	Clash overlap (Å)
1:A:76:ASP:OD1	3:A:201:HOH:O	1.81	0.97
1:B:49:ASN:HD22	1:B:63:GLN:HA	1.51	0.73
1:A:45:MET:HE3	1:A:67:TYR:OH	1.92	0.70
1:A:66:SER:O	1:A:70:ARG:HD3	1.94	0.68
1:A:43:TRP:CD1	1:A:51:ILE:HD11	2.33	0.64
1:A:63:GLN:NE2	1:A:68:ARG:HA	2.14	0.63
1:A:32:LYS:NZ	3:A:203:HOH:O	2.33	0.61
1:A:45:MET:CE	1:A:67:TYR:OH	2.53	0.56
1:A:66:SER:O	1:A:70:ARG:CD	2.54	0.55
1:B:49:ASN:ND2	1:B:63:GLN:HA	2.21	0.54
1:A:100:CYS:SG	1:A:100:CYS:O	2.66	0.53
1:B:43:TRP:CD1	1:B:51:ILE:HD11	2.43	0.53
1:A:51:ILE:HD13	1:A:51:ILE:N	2.23	0.53
1:B:16:VAL:HG11	1:B:22:MET:HE3	1.93	0.51
1:B:45:MET:CE	1:B:67:TYR:OH	2.59	0.50
1:A:23:THR:HA	1:A:85:LEU:O	2.11	0.50
1:B:42:TYR:CD2	1:B:101:MET:HE3	2.46	0.50
1:B:100:CYS:SG	1:B:100:CYS:O	2.70	0.49
1:B:23:THR:HA	1:B:85:LEU:O	2.12	0.48
1:B:50:ILE:O	1:B:51:ILE:HG23	2.13	0.48
1:B:64:HIS:CD2	1:B:66:SER:H	2.33	0.47
1:A:5:PHE:HA	3:A:205:HOH:O	2.14	0.47
1:A:44:GLU:OE2	1:A:99:ARG:HD2	2.15	0.47
1:B:45:MET:HE3	1:B:67:TYR:OH	2.16	0.46
1:B:64:HIS:HD2	1:B:66:SER:HB3	1.79	0.46
1:B:44:GLU:OE2	1:B:99:ARG:HD2	2.16	0.45
1:B:64:HIS:HD2	1:B:66:SER:CB	2.30	0.45
1:B:43:TRP:HD1	1:B:51:ILE:HD11	1.80	0.45
2:B:201:A1IXH:F3	2:B:201:A1IXH:C8	2.55	0.45
1:B:77:GLN:HB3	1:B:82:ASN:HB3	2.00	0.45
1:A:43:TRP:HB2	1:A:51:ILE:HD13	1.99	0.44
1:B:53:PHE:CE1	1:B:56:GLY:HA2	2.53	0.44
1:A:53:PHE:CZ	1:A:56:GLY:HA2	2.54	0.43

Continued on next page...

Continued from previous page...

Atom-1	Atom-2	Interatomic distance (Å)	Clash overlap (Å)
1:A:65:SER:O	1:A:67:TYR:N	2.52	0.43
1:B:64:HIS:CD2	1:B:66:SER:HB3	2.54	0.42
1:A:53:PHE:CE1	1:A:56:GLY:HA2	2.54	0.42
1:A:68:ARG:HA	1:A:68:ARG:HD3	1.77	0.42
1:A:77:GLN:HB3	1:A:82:ASN:HB3	2.02	0.42
1:B:53:PHE:CZ	1:B:56:GLY:HA2	2.54	0.42
1:A:65:SER:O	1:A:66:SER:C	2.62	0.42
1:A:51:ILE:N	1:A:51:ILE:CD1	2.83	0.41
1:A:7:VAL:HG23	1:A:108:ASP:HB3	2.03	0.41
1:A:62:VAL:HG12	1:A:62:VAL:O	2.21	0.41
1:A:40:ILE:HB	1:A:103:SER:HB3	2.02	0.41
1:B:31:GLU:O	1:B:32:LYS:C	2.63	0.41
1:B:52:GLN:NE2	2:B:201:A1IXH:C12	2.85	0.40

There are no symmetry-related clashes.

5.3 Torsion angles

5.3.1 Protein backbone

In the following table, the Percentiles column shows the percent Ramachandran outliers of the chain as a percentile score with respect to all X-ray entries followed by that with respect to entries of similar resolution.

The Analysed column shows the number of residues for which the backbone conformation was analysed, and the total number of residues.

Mol	Chain	Analysed	Favoured	Allowed	Outliers	Percentiles	
1	A	124/131 (95%)	115 (93%)	7 (6%)	2 (2%)	8	7
1	B	124/131 (95%)	117 (94%)	7 (6%)	0	100	100
All	All	248/262 (95%)	232 (94%)	14 (6%)	2 (1%)	16	20

All (2) Ramachandran outliers are listed below:

Mol	Chain	Res	Type
1	A	66	SER
1	A	106	GLY

5.3.2 Protein sidechains ⓘ

In the following table, the Percentiles column shows the percent sidechain outliers of the chain as a percentile score with respect to all X-ray entries followed by that with respect to entries of similar resolution.

The Analysed column shows the number of residues for which the sidechain conformation was analysed, and the total number of residues.

Mol	Chain	Analysed	Rotameric	Outliers	Percentiles	
1	A	108/112 (96%)	101 (94%)	7 (6%)	14	20
1	B	108/112 (96%)	103 (95%)	5 (5%)	23	33
All	All	216/224 (96%)	204 (94%)	12 (6%)	17	26

All (12) residues with a non-rotameric sidechain are listed below:

Mol	Chain	Res	Type
1	A	22	MET
1	A	24	ILE
1	A	51	ILE
1	A	59	ASP
1	A	65	SER
1	A	68	ARG
1	A	76	ASP
1	B	11	LYS
1	B	12	ASP
1	B	51	ILE
1	B	54	VAL
1	B	62	VAL

Sometimes sidechains can be flipped to improve hydrogen bonding and reduce clashes. All (6) such sidechains are listed below:

Mol	Chain	Res	Type
1	A	52	GLN
1	A	63	GLN
1	A	77	GLN
1	B	49	ASN
1	B	52	GLN
1	B	64	HIS

5.3.3 RNA ⓘ

There are no RNA molecules in this entry.

5.4 Non-standard residues in protein, DNA, RNA chains [i](#)

There are no non-standard protein/DNA/RNA residues in this entry.

5.5 Carbohydrates [i](#)

There are no oligosaccharides in this entry.

5.6 Ligand geometry [i](#)

1 ligand is modelled in this entry.

In the following table, the Counts columns list the number of bonds (or angles) for which Mogul statistics could be retrieved, the number of bonds (or angles) that are observed in the model and the number of bonds (or angles) that are defined in the Chemical Component Dictionary. The Link column lists molecule types, if any, to which the group is linked. The Z score for a bond length (or angle) is the number of standard deviations the observed value is removed from the expected value. A bond length (or angle) with $|Z| > 2$ is considered an outlier worth inspection. RMSZ is the root-mean-square of all Z scores of the bond lengths (or angles).

Mol	Type	Chain	Res	Link	Bond lengths			Bond angles		
					Counts	RMSZ	# $ Z > 2$	Counts	RMSZ	# $ Z > 2$
2	A1IXH	B	201	-	40,41,41	0.73	1 (2%)	51,60,60	1.40	8 (15%)

In the following table, the Chirals column lists the number of chiral outliers, the number of chiral centers analysed, the number of these observed in the model and the number defined in the Chemical Component Dictionary. Similar counts are reported in the Torsion and Rings columns. '-' means no outliers of that kind were identified.

Mol	Type	Chain	Res	Link	Chirals	Torsions	Rings
2	A1IXH	B	201	-	-	13/30/37/37	0/4/4/4

All (1) bond length outliers are listed below:

Mol	Chain	Res	Type	Atoms	Z	Observed(Å)	Ideal(Å)
2	B	201	A1IXH	C7-C8	-2.20	1.43	1.47

All (8) bond angle outliers are listed below:

Mol	Chain	Res	Type	Atoms	Z	Observed(°)	Ideal(°)
2	B	201	A1IXH	C11-C10-C9	5.36	125.50	122.24
2	B	201	A1IXH	F1-C21-C11	2.56	117.15	112.70
2	B	201	A1IXH	C4-C3-C22	-2.48	113.79	118.68

Continued on next page...

Continued from previous page...

Mol	Chain	Res	Type	Atoms	Z	Observed(°)	Ideal(°)
2	B	201	A1IXH	C20-C10-C9	-2.44	114.94	120.70
2	B	201	A1IXH	C19-C16-N1	2.42	113.74	107.63
2	B	201	A1IXH	C22-C3-C2	2.28	126.52	122.42
2	B	201	A1IXH	O4-C25-C28	-2.18	120.08	122.03
2	B	201	A1IXH	C21-C11-C10	-2.12	119.69	120.84

There are no chirality outliers.

All (13) torsion outliers are listed below:

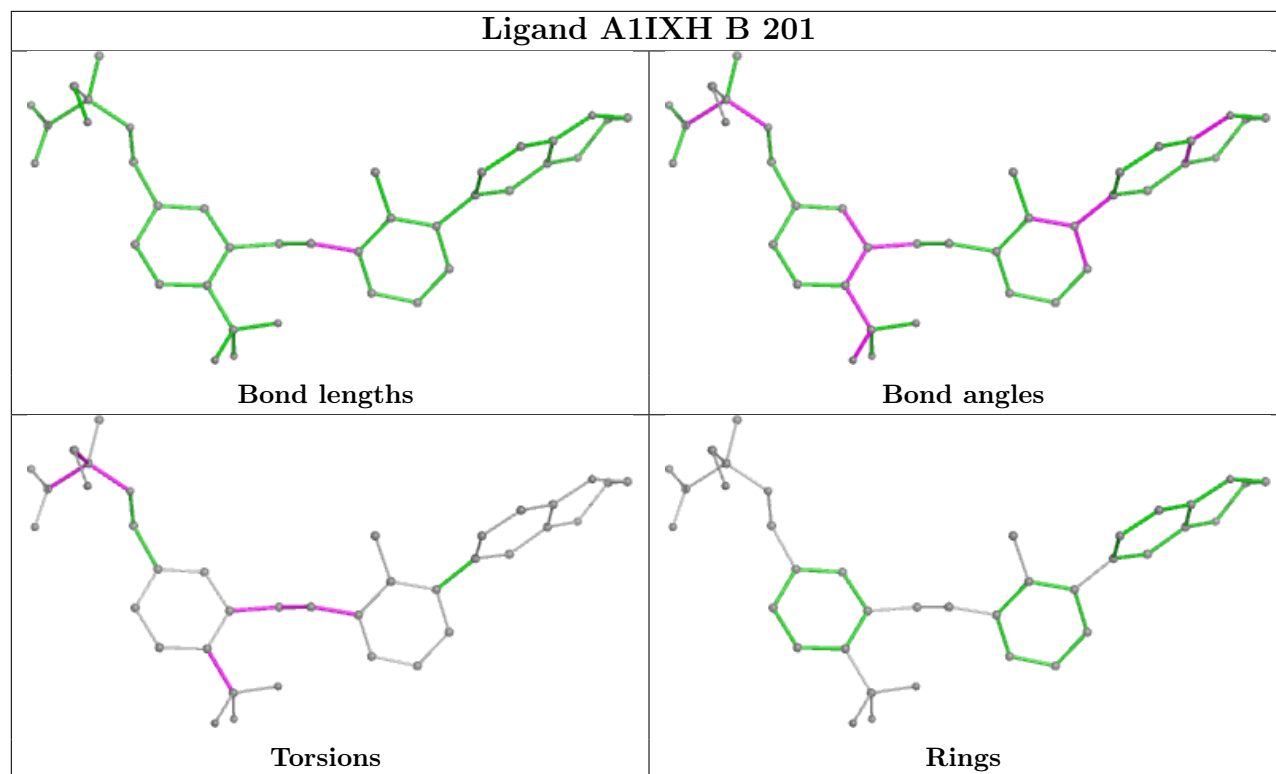
Mol	Chain	Res	Type	Atoms
2	B	201	A1IXH	C18-C16-C17-O1
2	B	201	A1IXH	C19-C16-C17-O1
2	B	201	A1IXH	N1-C16-C17-O1
2	B	201	A1IXH	C17-C16-N1-C15
2	B	201	A1IXH	C18-C16-N1-C15
2	B	201	A1IXH	C19-C16-N1-C15
2	B	201	A1IXH	C18-C16-C19-O3
2	B	201	A1IXH	C20-C10-C9-C8
2	B	201	A1IXH	C11-C10-C9-C8
2	B	201	A1IXH	C12-C11-C21-F3
2	B	201	A1IXH	C6-C7-C8-C9
2	B	201	A1IXH	C7-C8-C9-C10
2	B	201	A1IXH	C12-C11-C21-F2

There are no ring outliers.

1 monomer is involved in 2 short contacts:

Mol	Chain	Res	Type	Clashes	Symm-Clashes
2	B	201	A1IXH	2	0

The following is a two-dimensional graphical depiction of Mogul quality analysis of bond lengths, bond angles, torsion angles, and ring geometry for all instances of the Ligand of Interest. In addition, ligands with molecular weight > 250 and outliers as shown on the validation Tables will also be included. For torsion angles, if less than 5% of the Mogul distribution of torsion angles is within 10 degrees of the torsion angle in question, then that torsion angle is considered an outlier. Any bond that is central to one or more torsion angles identified as an outlier by Mogul will be highlighted in the graph. For rings, the root-mean-square deviation (RMSD) between the ring in question and similar rings identified by Mogul is calculated over all ring torsion angles. If the average RMSD is greater than 60 degrees and the minimal RMSD between the ring in question and any Mogul-identified rings is also greater than 60 degrees, then that ring is considered an outlier. The outliers are highlighted in purple. The color gray indicates Mogul did not find sufficient equivalents in the CSD to analyse the geometry.



5.7 Other polymers [i](#)

There are no such residues in this entry.

5.8 Polymer linkage issues [i](#)

There are no chain breaks in this entry.

6 Fit of model and data [i](#)

6.1 Protein, DNA and RNA chains [i](#)

In the following table, the column labelled ‘#RSRZ> 2’ contains the number (and percentage) of RSRZ outliers, followed by percent RSRZ outliers for the chain as percentile scores relative to all X-ray entries and entries of similar resolution. The OWAB column contains the minimum, median, 95th percentile and maximum values of the occupancy-weighted average B-factor per residue. The column labelled ‘Q< 0.9’ lists the number of (and percentage) of residues with an average occupancy less than 0.9.

Mol	Chain	Analysed	<RSRZ>	#RSRZ>2	OWAB(Å ²)	Q<0.9
1	A	126/131 (96%)	0.13	2 (1%) 70 71	34, 52, 83, 113	0
1	B	126/131 (96%)	-0.03	1 (0%) 82 83	34, 50, 78, 106	0
All	All	252/262 (96%)	0.05	3 (1%) 76 76	34, 50, 83, 113	0

All (3) RSRZ outliers are listed below:

Mol	Chain	Res	Type	RSRZ
1	A	129	HIS	2.9
1	A	36	LEU	2.5
1	B	129	HIS	2.2

6.2 Non-standard residues in protein, DNA, RNA chains [i](#)

There are no non-standard protein/DNA/RNA residues in this entry.

6.3 Carbohydrates [i](#)

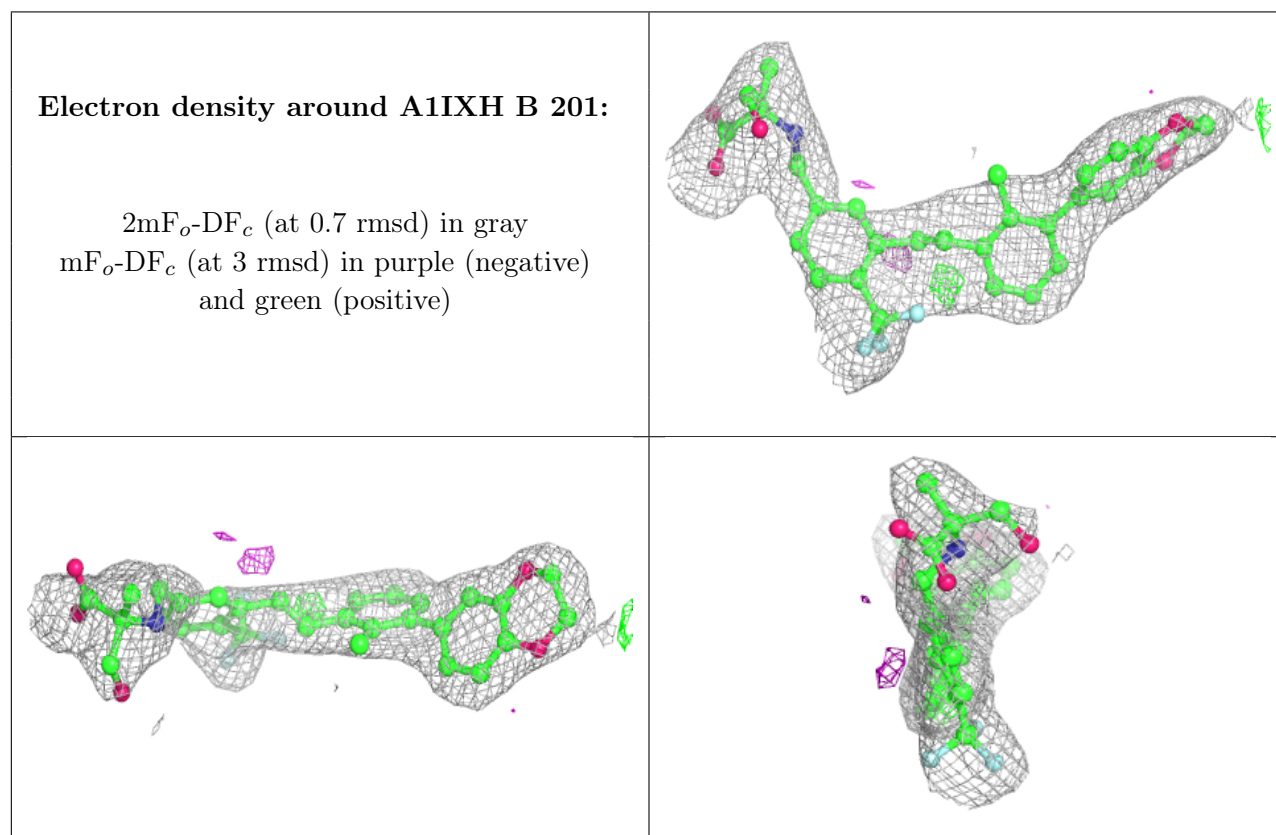
There are no monosaccharides in this entry.

6.4 Ligands [i](#)

In the following table, the Atoms column lists the number of modelled atoms in the group and the number defined in the chemical component dictionary. The B-factors column lists the minimum, median, 95th percentile and maximum values of B factors of atoms in the group. The column labelled ‘Q< 0.9’ lists the number of atoms with occupancy less than 0.9.

Mol	Type	Chain	Res	Atoms	RSCC	RSR	B-factors(Å ²)	Q<0.9
2	A1IXH	B	201	38/38	0.90	0.12	40,59,104,122	0

The following is a graphical depiction of the model fit to experimental electron density of all instances of the Ligand of Interest. In addition, ligands with molecular weight > 250 and outliers as shown on the geometry validation Tables will also be included. Each fit is shown from different orientation to approximate a three-dimensional view.



6.5 Other polymers [i](#)

There are no such residues in this entry.