



# Full wwPDB X-ray Structure Validation Report ⓘ

Oct 22, 2024 – 03:42 AM EDT

PDB ID : 3HKL  
Title : Crystal Structure of the Frizzled-like Cysteine-rich Domain of MuSK  
Authors : Stiegler, A.L.; Hubbard, S.R.  
Deposited on : 2009-05-24  
Resolution : 2.10 Å(reported)

This is a Full wwPDB X-ray Structure Validation Report for a publicly released PDB entry.

We welcome your comments at [validation@mail.wwpdb.org](mailto:validation@mail.wwpdb.org)

A user guide is available at

<https://www.wwpdb.org/validation/2017/XrayValidationReportHelp>

with specific help available everywhere you see the ⓘ symbol.

The types of validation reports are described at

<http://www.wwpdb.org/validation/2017/FAQs#types>.

---

The following versions of software and data (see [references ⓘ](#)) were used in the production of this report:

MolProbity : 4.02b-467  
Mogul : 2022.3.0, CSD as543be (2022)  
Xtriage (Phenix) : 1.20.1  
EDS : 3.0  
Percentile statistics : 20231227.v01 (using entries in the PDB archive December 27th 2023)  
CCP4 : 9.0.003 (Gargrove)  
Density-Fitness : 1.0.11  
Ideal geometry (proteins) : Engh & Huber (2001)  
Ideal geometry (DNA, RNA) : Parkinson et al. (1996)  
Validation Pipeline (wwPDB-VP) : 2.39

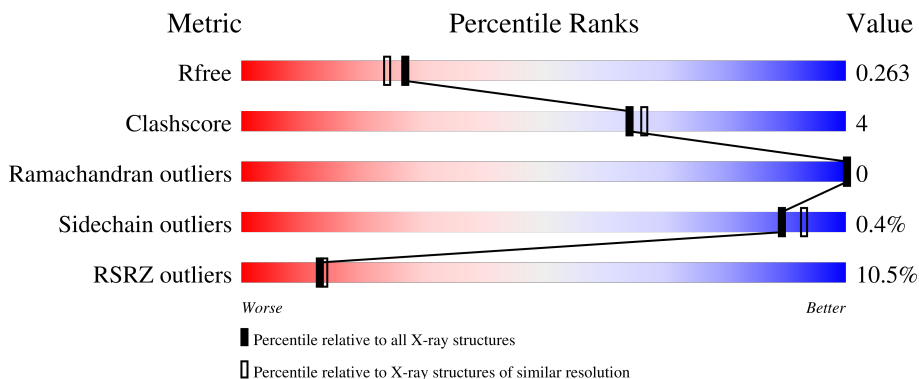
# 1 Overall quality at a glance

The following experimental techniques were used to determine the structure:

*X-RAY DIFFRACTION*

The reported resolution of this entry is 2.10 Å.

Percentile scores (ranging between 0-100) for global validation metrics of the entry are shown in the following graphic. The table shows the number of entries on which the scores are based.



Metric	Whole archive (#Entries)	Similar resolution (#Entries, resolution range(Å))
$R_{free}$	164625	6234 (2.10-2.10)
Clashscore	180529	6893 (2.10-2.10)
Ramachandran outliers	177936	6839 (2.10-2.10)
Sidechain outliers	177891	6840 (2.10-2.10)
RSRZ outliers	164620	6234 (2.10-2.10)

The table below summarises the geometric issues observed across the polymeric chains and their fit to the electron density. The red, orange, yellow and green segments of the lower bar indicate the fraction of residues that contain outliers for  $\geq 3$ , 2, 1 and 0 types of geometric quality criteria respectively. A grey segment represents the fraction of residues that are not modelled. The numeric value for each fraction is indicated below the corresponding segment, with a dot representing fractions  $\leq 5\%$ . The upper red bar (where present) indicates the fraction of residues that have poor fit to the electron density. The numeric value is given above the bar.

Mol	Chain	Length	Quality of chain
1	A	197	<div> <div>6%</div> <div> <div></div> <div>62%</div> <div>9%</div> <div>28%</div> </div> </div>
1	B	197	<div> <div>10%</div> <div> <div></div> <div>72%</div> <div>6%</div> <div>22%</div> </div> </div>
2	C	2	<div> <div></div> <div> <div>50%</div> <div>50%</div> </div> </div>
2	D	2	<div> <div></div> <div> <div>50%</div> <div>50%</div> </div> </div>

## 2 Entry composition [i](#)

There are 3 unique types of molecules in this entry. The entry contains 2349 atoms, of which 0 are hydrogens and 0 are deuteriums.

In the tables below, the ZeroOcc column contains the number of atoms modelled with zero occupancy, the AltConf column contains the number of residues with at least one atom in alternate conformation and the Trace column contains the number of residues modelled with at most 2 atoms.

- Molecule 1 is a protein called Muscle, skeletal receptor tyrosine protein kinase.

Mol	Chain	Residues	Atoms					ZeroOcc	AltConf	Trace
1	A	141	Total	C	N	O	S	0	0	0
			1087	697	181	195	14			
1	B	153	Total	C	N	O	S	0	0	0
			1143	732	187	210	14			

There are 30 discrepancies between the modelled and reference sequences:

Chain	Residue	Modelled	Actual	Comment	Reference
A	298	ALA	-	expression tag	UNP Q62838
A	299	ASP	-	expression tag	UNP Q62838
A	300	LEU	-	expression tag	UNP Q62838
A	301	GLY	-	expression tag	UNP Q62838
A	302	SER	-	expression tag	UNP Q62838
A	303	HIS	-	expression tag	UNP Q62838
A	304	HIS	-	expression tag	UNP Q62838
A	305	HIS	-	expression tag	UNP Q62838
A	306	HIS	-	expression tag	UNP Q62838
A	307	HIS	-	expression tag	UNP Q62838
A	308	HIS	-	expression tag	UNP Q62838
A	309	GLY	-	expression tag	UNP Q62838
A	310	PRO	-	expression tag	UNP Q62838
A	311	ARG	-	expression tag	UNP Q62838
A	312	GLY	-	expression tag	UNP Q62838
B	298	ALA	-	expression tag	UNP Q62838
B	299	ASP	-	expression tag	UNP Q62838
B	300	LEU	-	expression tag	UNP Q62838
B	301	GLY	-	expression tag	UNP Q62838
B	302	SER	-	expression tag	UNP Q62838
B	303	HIS	-	expression tag	UNP Q62838
B	304	HIS	-	expression tag	UNP Q62838
B	305	HIS	-	expression tag	UNP Q62838
B	306	HIS	-	expression tag	UNP Q62838
B	307	HIS	-	expression tag	UNP Q62838

*Continued on next page...*

*Continued from previous page...*

Chain	Residue	Modelled	Actual	Comment	Reference
B	308	HIS	-	expression tag	UNP Q62838
B	309	GLY	-	expression tag	UNP Q62838
B	310	PRO	-	expression tag	UNP Q62838
B	311	ARG	-	expression tag	UNP Q62838
B	312	GLY	-	expression tag	UNP Q62838

- Molecule 2 is an oligosaccharide called 2-acetamido-2-deoxy-beta-D-glucopyranose-(1-4)-2-acetamido-2-deoxy-beta-D-glucopyranose.



Mol	Chain	Residues	Atoms				ZeroOcc	AltConf	Trace
2	C	2	Total	C	N	O	0	0	0
			28	16	2	10			
2	D	2	Total	C	N	O	0	0	0
			28	16	2	10			

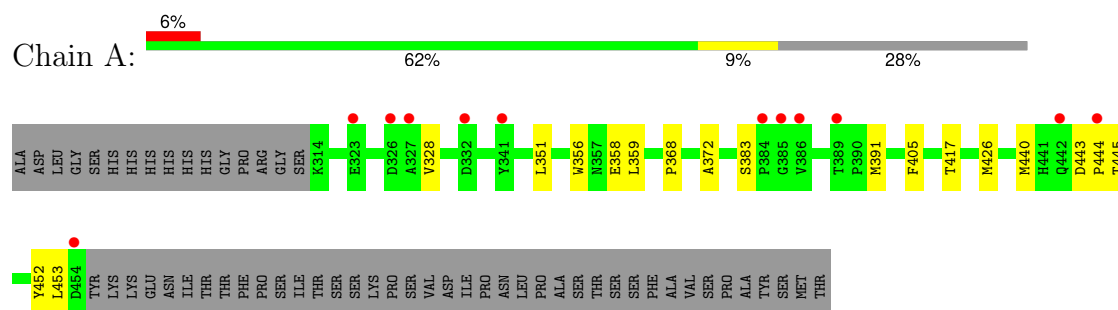
- Molecule 3 is water.

Mol	Chain	Residues	Atoms		ZeroOcc	AltConf
3	A	22	Total	O	0	0
			22	22		
3	B	41	Total	O	0	0
			41	41		

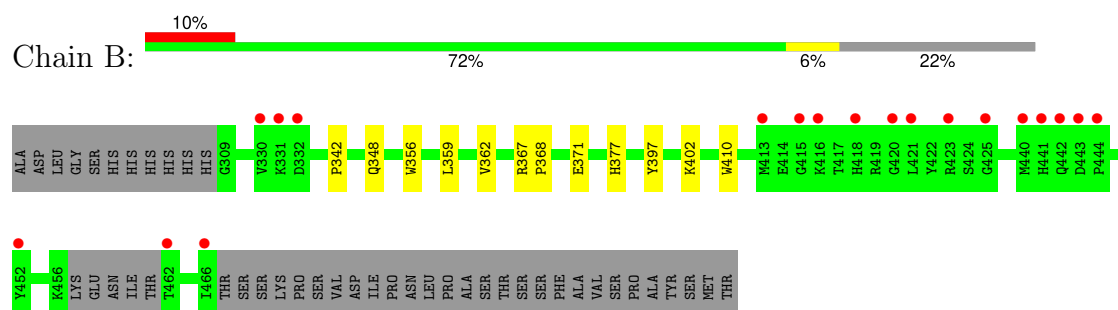
### 3 Residue-property plots [i](#)

These plots are drawn for all protein, RNA, DNA and oligosaccharide chains in the entry. The first graphic for a chain summarises the proportions of the various outlier classes displayed in the second graphic. The second graphic shows the sequence view annotated by issues in geometry and electron density. Residues are color-coded according to the number of geometric quality criteria for which they contain at least one outlier: green = 0, yellow = 1, orange = 2 and red = 3 or more. A red dot above a residue indicates a poor fit to the electron density ( $RSRZ > 2$ ). Stretches of 2 or more consecutive residues without any outlier are shown as a green connector. Residues present in the sample, but not in the model, are shown in grey.

- Molecule 1: Muscle, skeletal receptor tyrosine protein kinase



- Molecule 1: Muscle, skeletal receptor tyrosine protein kinase



- Molecule 2: 2-acetamido-2-deoxy-beta-D-glucopyranose-(1-4)-2-acetamido-2-deoxy-beta-D-glucopyranose



- Molecule 2: 2-acetamido-2-deoxy-beta-D-glucopyranose-(1-4)-2-acetamido-2-deoxy-beta-D-glucopyranose



## 4 Data and refinement statistics

Property	Value	Source
Space group	P 1 21 1	Depositor
Cell constants a, b, c, $\alpha$ , $\beta$ , $\gamma$	65.59Å 44.42Å 69.53Å 90.00° 108.27° 90.00°	Depositor
Resolution (Å)	34.47 – 2.10 34.47 – 2.10	Depositor EDS
% Data completeness (in resolution range)	97.7 (34.47-2.10) 97.7 (34.47-2.10)	Depositor EDS
$R_{merge}$	(Not available)	Depositor
$R_{sym}$	(Not available)	Depositor
$\langle I/\sigma(I) \rangle$ <sup>1</sup>	2.50 (at 2.08Å)	Xtriage
Refinement program	REFMAC 5.2.0019	Depositor
R, $R_{free}$	0.226 , 0.264 0.225 , 0.263	Depositor DCC
$R_{free}$ test set	1129 reflections (5.13%)	wwPDB-VP
Wilson B-factor (Å <sup>2</sup> )	34.8	Xtriage
Anisotropy	0.253	Xtriage
Bulk solvent $k_{sol}$ (e/Å <sup>3</sup> ), $B_{sol}$ (Å <sup>2</sup> )	0.40 , 37.9	EDS
L-test for twinning <sup>2</sup>	$\langle  L  \rangle = 0.48$ , $\langle L^2 \rangle = 0.32$	Xtriage
Estimated twinning fraction	No twinning to report.	Xtriage
$F_o, F_c$ correlation	0.94	EDS
Total number of atoms	2349	wwPDB-VP
Average B, all atoms (Å <sup>2</sup> )	38.0	wwPDB-VP

Xtriage's analysis on translational NCS is as follows: *The largest off-origin peak in the Patterson function is 7.20% of the height of the origin peak. No significant pseudotranslation is detected.*

<sup>1</sup>Intensities estimated from amplitudes.

<sup>2</sup>Theoretical values of  $\langle |L| \rangle$ ,  $\langle L^2 \rangle$  for acentric reflections are 0.5, 0.333 respectively for untwinned datasets, and 0.375, 0.2 for perfectly twinned datasets.

## 5 Model quality

### 5.1 Standard geometry

Bond lengths and bond angles in the following residue types are not validated in this section: NAG

The Z score for a bond length (or angle) is the number of standard deviations the observed value is removed from the expected value. A bond length (or angle) with  $|Z| > 5$  is considered an outlier worth inspection. RMSZ is the root-mean-square of all Z scores of the bond lengths (or angles).

Mol	Chain	Bond lengths		Bond angles	
		RMSZ	$\# Z  > 5$	RMSZ	$\# Z  > 5$
1	A	0.38	0/1119	0.51	0/1527
1	B	0.39	0/1177	0.50	0/1610
All	All	0.39	0/2296	0.51	0/3137

There are no bond length outliers.

There are no bond angle outliers.

There are no chirality outliers.

There are no planarity outliers.

### 5.2 Too-close contacts

In the following table, the Non-H and H(model) columns list the number of non-hydrogen atoms and hydrogen atoms in the chain respectively. The H(added) column lists the number of hydrogen atoms added and optimized by MolProbity. The Clashes column lists the number of clashes within the asymmetric unit, whereas Symm-Clashes lists symmetry-related clashes.

Mol	Chain	Non-H	H(model)	H(added)	Clashes	Symm-Clashes
1	A	1087	0	1040	10	0
1	B	1143	0	1053	8	0
2	C	28	0	25	0	0
2	D	28	0	25	0	0
3	A	22	0	0	0	0
3	B	41	0	0	3	0
All	All	2349	0	2143	17	0

The all-atom clashscore is defined as the number of clashes found per 1000 atoms (including hydrogen atoms). The all-atom clashscore for this structure is 4.

All (17) close contacts within the same asymmetric unit are listed below, sorted by their clash

magnitude.

Atom-1	Atom-2	Interatomic distance (Å)	Clash overlap (Å)
1:B:348:GLN:HG3	3:B:21:HOH:O	1.68	0.92
1:A:328:VAL:CG1	1:A:372:ALA:HA	2.29	0.62
1:A:368:PRO:HB2	1:A:452:TYR:CE1	2.39	0.57
1:B:348:GLN:HG2	3:B:57:HOH:O	2.04	0.56
1:A:351:LEU:HD23	1:A:426:MET:HE2	1.95	0.49
1:B:367:ARG:HB3	1:B:368:PRO:HD3	1.95	0.47
1:A:383:SER:HA	1:A:391:MET:CE	2.47	0.45
1:B:359:LEU:O	1:B:362:VAL:HG22	2.17	0.44
1:A:443:ASP:HA	1:A:444:PRO:HD2	1.87	0.44
1:B:377:HIS:HD2	3:B:18:HOH:O	2.00	0.43
1:A:358:GLU:HG3	1:A:417:THR:HG23	2.01	0.43
1:A:391:MET:HE2	1:A:445:THR:O	2.20	0.42
1:A:356:TRP:HA	1:A:359:LEU:HB2	2.02	0.41
1:A:405:PHE:CE2	1:A:453:LEU:HD21	2.56	0.41
1:B:402:LYS:HA	1:B:410:TRP:CE3	2.55	0.41
1:B:356:TRP:CZ2	1:B:371:GLU:HB3	2.56	0.40
1:A:440:MET:SD	1:B:342:PRO:HB3	2.61	0.40

There are no symmetry-related clashes.

## 5.3 Torsion angles ⓘ

### 5.3.1 Protein backbone ⓘ

In the following table, the Percentiles column shows the percent Ramachandran outliers of the chain as a percentile score with respect to all X-ray entries followed by that with respect to entries of similar resolution.

The Analysed column shows the number of residues for which the backbone conformation was analysed, and the total number of residues.

Mol	Chain	Analysed	Favoured	Allowed	Outliers	Percentiles	
1	A	139/197 (71%)	136 (98%)	3 (2%)	0	100	100
1	B	149/197 (76%)	142 (95%)	7 (5%)	0	100	100
All	All	288/394 (73%)	278 (96%)	10 (4%)	0	100	100

There are no Ramachandran outliers to report.

### 5.3.2 Protein sidechains [i](#)

In the following table, the Percentiles column shows the percent sidechain outliers of the chain as a percentile score with respect to all X-ray entries followed by that with respect to entries of similar resolution.

The Analysed column shows the number of residues for which the sidechain conformation was analysed, and the total number of residues.

Mol	Chain	Analysed	Rotameric	Outliers	Percentiles	
1	A	117/172 (68%)	117 (100%)	0	100	100
1	B	119/172 (69%)	118 (99%)	1 (1%)	79	84
All	All	236/344 (69%)	235 (100%)	1 (0%)	89	93

All (1) residues with a non-rotameric sidechain are listed below:

Mol	Chain	Res	Type
1	B	397	TYR

Sometimes sidechains can be flipped to improve hydrogen bonding and reduce clashes. All (2) such sidechains are listed below:

Mol	Chain	Res	Type
1	B	376	ASN
1	B	377	HIS

### 5.3.3 RNA [i](#)

There are no RNA molecules in this entry.

## 5.4 Non-standard residues in protein, DNA, RNA chains [i](#)

There are no non-standard protein/DNA/RNA residues in this entry.

## 5.5 Carbohydrates [i](#)

4 monosaccharides are modelled in this entry.

In the following table, the Counts columns list the number of bonds (or angles) for which Mogul statistics could be retrieved, the number of bonds (or angles) that are observed in the model and the number of bonds (or angles) that are defined in the Chemical Component Dictionary. The Link column lists molecule types, if any, to which the group is linked. The Z score for a bond length (or angle) is the number of standard deviations the observed value is removed from the

expected value. A bond length (or angle) with  $|Z| > 2$  is considered an outlier worth inspection. RMSZ is the root-mean-square of all Z scores of the bond lengths (or angles).

Mol	Type	Chain	Res	Link	Bond lengths			Bond angles		
					Counts	RMSZ	$\# Z  > 2$	Counts	RMSZ	$\# Z  > 2$
2	NAG	C	1	1,2	14,14,15	0.50	0	17,19,21	0.67	0
2	NAG	C	2	2	14,14,15	0.49	0	17,19,21	0.96	1 (5%)
2	NAG	D	1	1,2	14,14,15	0.55	0	17,19,21	0.90	1 (5%)
2	NAG	D	2	2	14,14,15	0.53	0	17,19,21	0.69	0

In the following table, the Chirals column lists the number of chiral outliers, the number of chiral centers analysed, the number of these observed in the model and the number defined in the Chemical Component Dictionary. Similar counts are reported in the Torsion and Rings columns. '-' means no outliers of that kind were identified.

Mol	Type	Chain	Res	Link	Chirals	Torsions	Rings
2	NAG	C	1	1,2	-	0/6/23/26	0/1/1/1
2	NAG	C	2	2	-	4/6/23/26	0/1/1/1
2	NAG	D	1	1,2	-	0/6/23/26	0/1/1/1
2	NAG	D	2	2	-	2/6/23/26	0/1/1/1

There are no bond length outliers.

All (2) bond angle outliers are listed below:

Mol	Chain	Res	Type	Atoms	Z	Observed(°)	Ideal(°)
2	C	2	NAG	C1-O5-C5	3.00	116.21	112.19
2	D	1	NAG	O5-C1-C2	-2.44	107.52	111.29

There are no chirality outliers.

All (6) torsion outliers are listed below:

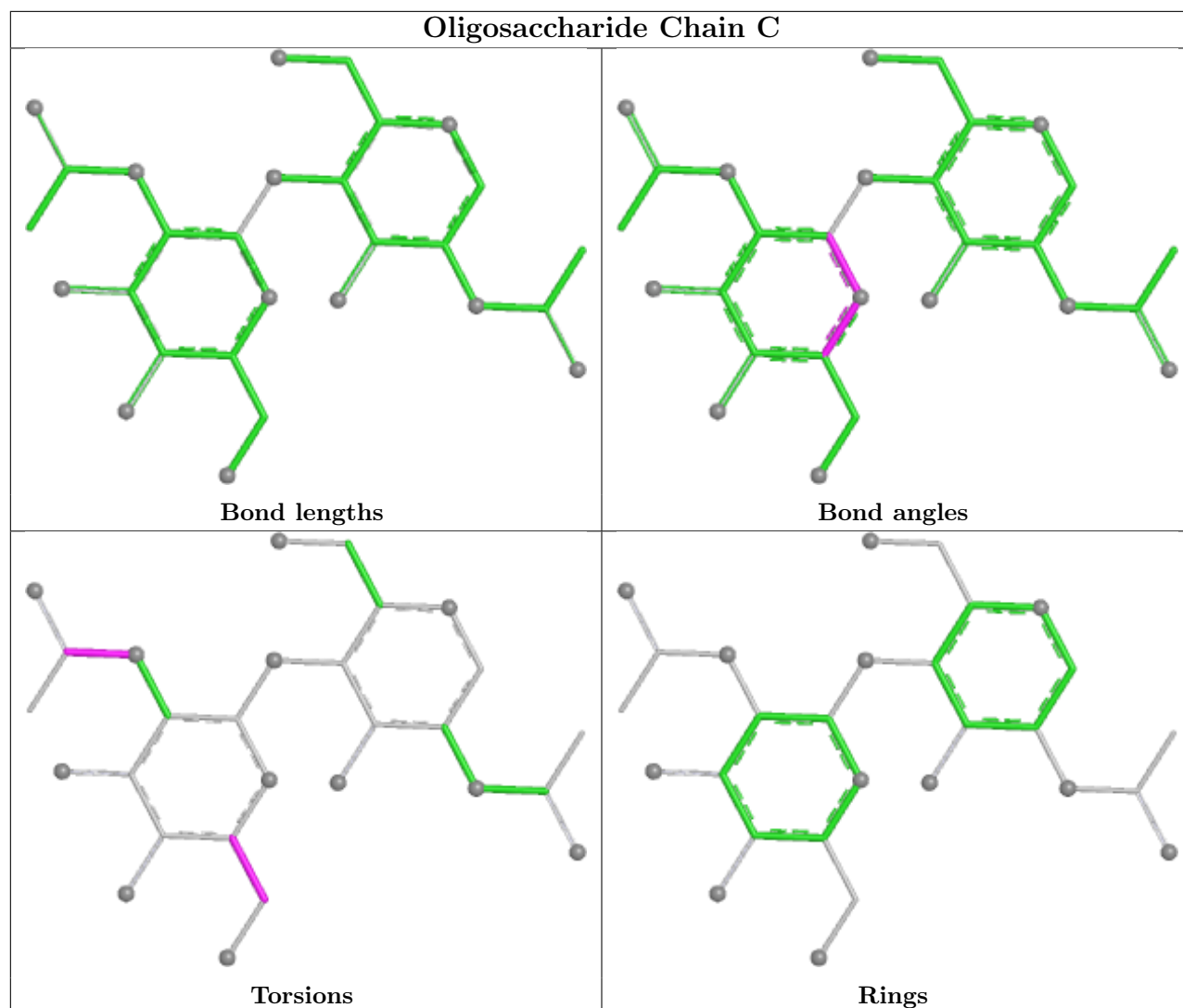
Mol	Chain	Res	Type	Atoms
2	D	2	NAG	C4-C5-C6-O6
2	C	2	NAG	O5-C5-C6-O6
2	D	2	NAG	O5-C5-C6-O6
2	C	2	NAG	C4-C5-C6-O6
2	C	2	NAG	C8-C7-N2-C2
2	C	2	NAG	O7-C7-N2-C2

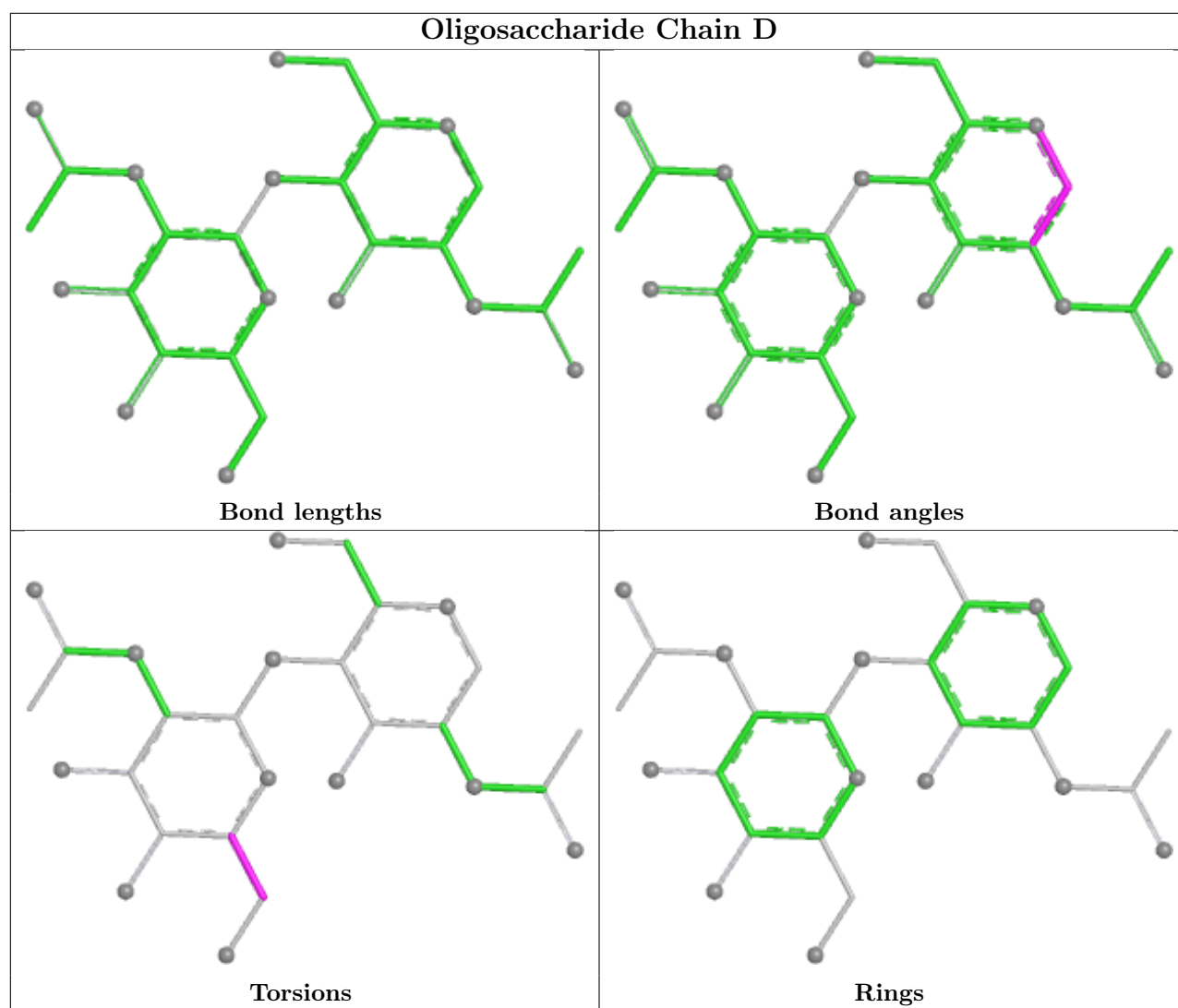
There are no ring outliers.

No monomer is involved in short contacts.

The following is a two-dimensional graphical depiction of Mogul quality analysis of bond lengths,

bond angles, torsion angles, and ring geometry for oligosaccharide.





## 5.6 Ligand geometry [i](#)

There are no ligands in this entry.

## 5.7 Other polymers [i](#)

There are no such residues in this entry.

## 5.8 Polymer linkage issues [i](#)

There are no chain breaks in this entry.

## 6 Fit of model and data

### 6.1 Protein, DNA and RNA chains

In the following table, the column labelled ‘#RSRZ > 2’ contains the number (and percentage) of RSRZ outliers, followed by percent RSRZ outliers for the chain as percentile scores relative to all X-ray entries and entries of similar resolution. The OWAB column contains the minimum, median, 95<sup>th</sup> percentile and maximum values of the occupancy-weighted average B-factor per residue. The column labelled ‘Q < 0.9’ lists the number of (and percentage) of residues with an average occupancy less than 0.9.

Mol	Chain	Analysed	<RSRZ>	#RSRZ>2	OWAB(Å <sup>2</sup> )	Q<0.9
1	A	141/197 (71%)	0.56	12 (8%) 18 19	22, 38, 47, 52	0
1	B	153/197 (77%)	0.67	19 (12%) 9 10	23, 38, 59, 61	0
All	All	294/394 (74%)	0.62	31 (10%) 13 14	22, 38, 57, 61	0

All (31) RSRZ outliers are listed below:

Mol	Chain	Res	Type	RSRZ
1	B	462	THR	5.1
1	A	442	GLN	3.5
1	B	441	HIS	3.3
1	B	452	TYR	3.3
1	B	442	GLN	3.2
1	A	444	PRO	3.2
1	B	444	PRO	3.1
1	B	416	LYS	3.0
1	A	327	ALA	3.0
1	B	330	VAL	2.9
1	B	418	HIS	2.7
1	A	454	ASP	2.7
1	A	384	PRO	2.6
1	B	440	MET	2.6
1	A	386	VAL	2.5
1	A	341	TYR	2.4
1	B	420	GLY	2.4
1	A	326	ASP	2.4
1	B	443	ASP	2.4
1	A	323	GLU	2.3
1	B	466	ILE	2.3
1	B	332	ASP	2.3
1	B	421	LEU	2.2
1	A	385	GLY	2.2

*Continued on next page...*

*Continued from previous page...*

Mol	Chain	Res	Type	RSRZ
1	A	332	ASP	2.1
1	B	423	ARG	2.1
1	B	425	GLY	2.1
1	B	413	MET	2.1
1	B	415	GLY	2.1
1	B	331	LYS	2.1
1	A	389	THR	2.1

## 6.2 Non-standard residues in protein, DNA, RNA chains [i](#)

There are no non-standard protein/DNA/RNA residues in this entry.

## 6.3 Carbohydrates [i](#)

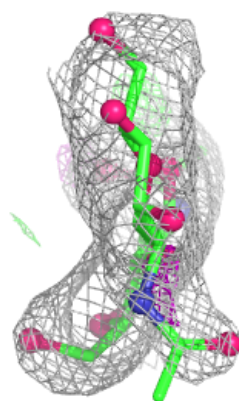
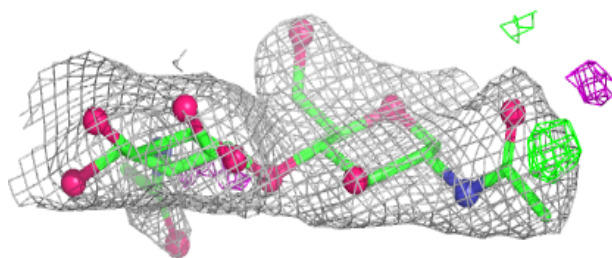
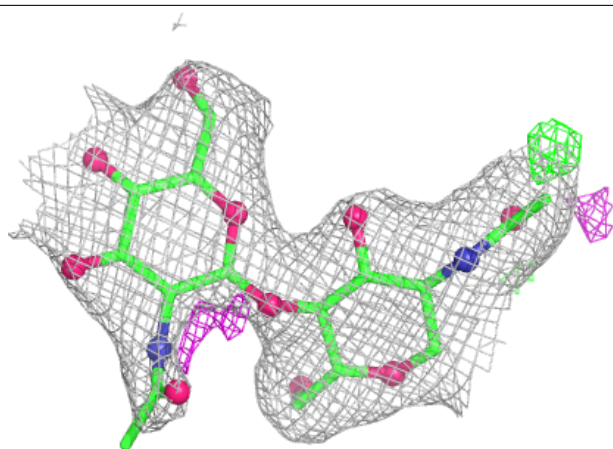
In the following table, the Atoms column lists the number of modelled atoms in the group and the number defined in the chemical component dictionary. The B-factors column lists the minimum, median, 95<sup>th</sup> percentile and maximum values of B factors of atoms in the group. The column labelled 'Q< 0.9' lists the number of atoms with occupancy less than 0.9.

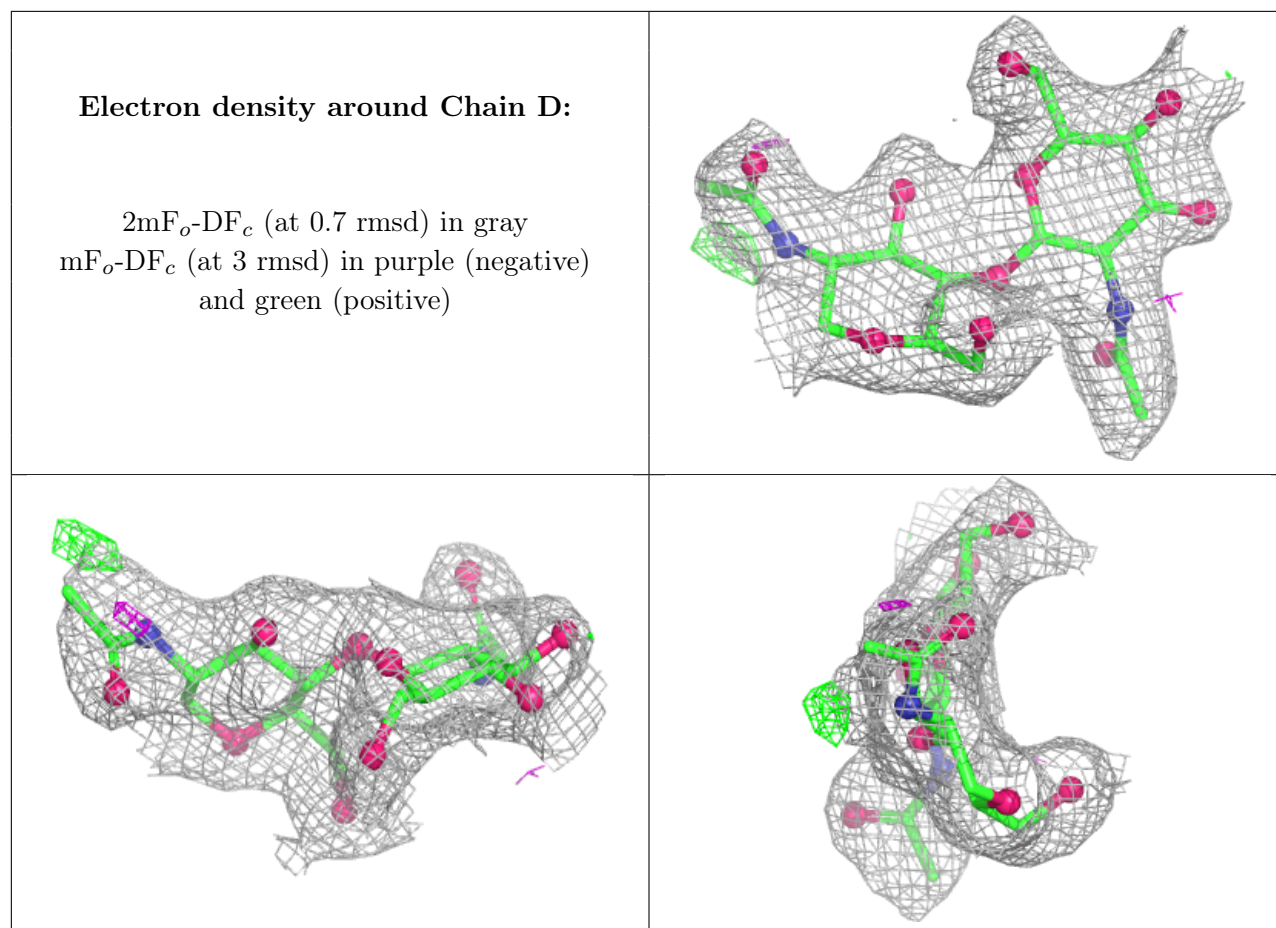
Mol	Type	Chain	Res	Atoms	RSCC	RSR	B-factors(Å <sup>2</sup> )	Q<0.9
2	NAG	C	2	14/15	0.72	0.14	59,61,63,63	0
2	NAG	D	2	14/15	0.80	0.12	44,46,49,50	0
2	NAG	C	1	14/15	0.86	0.13	48,50,53,57	0
2	NAG	D	1	14/15	0.93	0.07	28,35,39,40	0

The following is a graphical depiction of the model fit to experimental electron density for oligosaccharide. Each fit is shown from different orientation to approximate a three-dimensional view.

**Electron density around Chain C:**

$2mF_o-DF_c$  (at 0.7 rmsd) in gray  
 $mF_o-DF_c$  (at 3 rmsd) in purple (negative)  
and green (positive)





## 6.4 Ligands [i](#)

There are no ligands in this entry.

## 6.5 Other polymers [i](#)

There are no such residues in this entry.