



## Full wwPDB EM Validation Report ⓘ

May 27, 2025 – 02:06 pm BST

PDB ID : 9HJ8 / pdb\_00009hj8  
EMDB ID : EMD-52211  
Title : TRPML1 in complex with compound 5  
Authors : Reeks, J.; Mahajan, P.; Clark, M.; Cowan, S.R.; Di Daniel, E.; Earl, C.P.; Fisher, S.; Holvey, R.S.; Jackson, S.M.; Lloyd-Evans, E.; Morgillo, C.M.; Mortenson, P.N.; O'Reilly, M.; Richardson, C.J.; Schopf, P.; Tams, D.M.; Waller-Evans, H.; Ward, S.E.; Whibley, S.; Williams, P.A.; Johnson, C.N.  
Deposited on : 2024-11-28  
Resolution : 2.10 Å(reported)  
Based on initial model : .

This is a Full wwPDB EM Validation Report for a publicly released PDB entry.

We welcome your comments at [validation@mail.wwpdb.org](mailto:validation@mail.wwpdb.org)

A user guide is available at

<https://www.wwpdb.org/validation/2017/EMValidationReportHelp>

with specific help available everywhere you see the ⓘ symbol.

The types of validation reports are described at

<http://www.wwpdb.org/validation/2017/FAQs#types>.

---

The following versions of software and data (see [references ⓘ](#)) were used in the production of this report:

EMDB validation analysis : 0.0.1.dev118  
Mogul : 1.8.4, CSD as541be (2020)  
MolProbity : **FAILED**  
buster-report : 1.1.7 (2018)  
Percentile statistics : 20231227.v01 (using entries in the PDB archive December 27th 2023)  
MapQ : 1.9.13  
Ideal geometry (proteins) : Engh & Huber (2001)  
Ideal geometry (DNA, RNA) : Parkinson et al. (1996)  
Validation Pipeline (wwPDB-VP) : 2.43.1

# 1 Overall quality at a glance

The following experimental techniques were used to determine the structure:

*ELECTRON MICROSCOPY*

The reported resolution of this entry is 2.10 Å.

There are no overall percentile quality scores available for this entry.

MolProbity failed to run properly - the sequence quality summary graphics cannot be shown.

## 2 Entry composition

There are 7 unique types of molecules in this entry. The entry contains 15988 atoms, of which 104 are hydrogens and 0 are deuteriums.

In the tables below, the AltConf column contains the number of residues with at least one atom in alternate conformation and the Trace column contains the number of residues modelled with at most 2 atoms.

- Molecule 1 is a protein called Mucolipin-1.

Mol	Chain	Residues	Atoms					AltConf	Trace
1	A	459	Total	C	N	O	S	1	0
			3712	2434	614	639	25		
1	B	459	Total	C	N	O	S	1	0
			3712	2434	614	639	25		
1	C	459	Total	C	N	O	S	1	0
			3712	2434	614	639	25		
1	D	459	Total	C	N	O	S	1	0
			3712	2434	614	639	25		

There are 196 discrepancies between the modelled and reference sequences:

Chain	Residue	Modelled	Actual	Comment	Reference
A	-47	MET	-	initiating methionine	UNP Q9GZU1
A	-46	HIS	-	expression tag	UNP Q9GZU1
A	-45	HIS	-	expression tag	UNP Q9GZU1
A	-44	HIS	-	expression tag	UNP Q9GZU1
A	-43	HIS	-	expression tag	UNP Q9GZU1
A	-42	HIS	-	expression tag	UNP Q9GZU1
A	-41	HIS	-	expression tag	UNP Q9GZU1
A	-40	HIS	-	expression tag	UNP Q9GZU1
A	-39	HIS	-	expression tag	UNP Q9GZU1
A	-38	GLY	-	expression tag	UNP Q9GZU1
A	-37	GLY	-	expression tag	UNP Q9GZU1
A	-36	SER	-	expression tag	UNP Q9GZU1
A	-35	ASP	-	expression tag	UNP Q9GZU1
A	-34	TYR	-	expression tag	UNP Q9GZU1
A	-33	LYS	-	expression tag	UNP Q9GZU1
A	-32	ASP	-	expression tag	UNP Q9GZU1
A	-31	HIS	-	expression tag	UNP Q9GZU1
A	-30	ASP	-	expression tag	UNP Q9GZU1
A	-29	GLY	-	expression tag	UNP Q9GZU1
A	-28	ASP	-	expression tag	UNP Q9GZU1
A	-27	TYR	-	expression tag	UNP Q9GZU1
A	-26	LYS	-	expression tag	UNP Q9GZU1

*Continued on next page...*

*Continued from previous page...*

Chain	Residue	Modelled	Actual	Comment	Reference
A	-25	ASP	-	expression tag	UNP Q9GZU1
A	-24	HIS	-	expression tag	UNP Q9GZU1
A	-23	ASP	-	expression tag	UNP Q9GZU1
A	-22	ILE	-	expression tag	UNP Q9GZU1
A	-21	ASP	-	expression tag	UNP Q9GZU1
A	-20	TYR	-	expression tag	UNP Q9GZU1
A	-19	LYS	-	expression tag	UNP Q9GZU1
A	-18	ASP	-	expression tag	UNP Q9GZU1
A	-17	ASP	-	expression tag	UNP Q9GZU1
A	-16	ASP	-	expression tag	UNP Q9GZU1
A	-15	ASP	-	expression tag	UNP Q9GZU1
A	-14	LYS	-	expression tag	UNP Q9GZU1
A	-13	GLY	-	expression tag	UNP Q9GZU1
A	-12	GLY	-	expression tag	UNP Q9GZU1
A	-11	SER	-	expression tag	UNP Q9GZU1
A	-10	GLY	-	expression tag	UNP Q9GZU1
A	-9	GLY	-	expression tag	UNP Q9GZU1
A	-8	SER	-	expression tag	UNP Q9GZU1
A	-7	GLU	-	expression tag	UNP Q9GZU1
A	-6	ASN	-	expression tag	UNP Q9GZU1
A	-5	LEU	-	expression tag	UNP Q9GZU1
A	-4	TYR	-	expression tag	UNP Q9GZU1
A	-3	PHE	-	expression tag	UNP Q9GZU1
A	-2	GLN	-	expression tag	UNP Q9GZU1
A	-1	GLY	-	expression tag	UNP Q9GZU1
A	0	PRO	-	expression tag	UNP Q9GZU1
A	1	GLY	-	expression tag	UNP Q9GZU1
B	-47	MET	-	initiating methionine	UNP Q9GZU1
B	-46	HIS	-	expression tag	UNP Q9GZU1
B	-45	HIS	-	expression tag	UNP Q9GZU1
B	-44	HIS	-	expression tag	UNP Q9GZU1
B	-43	HIS	-	expression tag	UNP Q9GZU1
B	-42	HIS	-	expression tag	UNP Q9GZU1
B	-41	HIS	-	expression tag	UNP Q9GZU1
B	-40	HIS	-	expression tag	UNP Q9GZU1
B	-39	HIS	-	expression tag	UNP Q9GZU1
B	-38	GLY	-	expression tag	UNP Q9GZU1
B	-37	GLY	-	expression tag	UNP Q9GZU1
B	-36	SER	-	expression tag	UNP Q9GZU1
B	-35	ASP	-	expression tag	UNP Q9GZU1
B	-34	TYR	-	expression tag	UNP Q9GZU1
B	-33	LYS	-	expression tag	UNP Q9GZU1

*Continued on next page...*

*Continued from previous page...*

Chain	Residue	Modelled	Actual	Comment	Reference
B	-32	ASP	-	expression tag	UNP Q9GZU1
B	-31	HIS	-	expression tag	UNP Q9GZU1
B	-30	ASP	-	expression tag	UNP Q9GZU1
B	-29	GLY	-	expression tag	UNP Q9GZU1
B	-28	ASP	-	expression tag	UNP Q9GZU1
B	-27	TYR	-	expression tag	UNP Q9GZU1
B	-26	LYS	-	expression tag	UNP Q9GZU1
B	-25	ASP	-	expression tag	UNP Q9GZU1
B	-24	HIS	-	expression tag	UNP Q9GZU1
B	-23	ASP	-	expression tag	UNP Q9GZU1
B	-22	ILE	-	expression tag	UNP Q9GZU1
B	-21	ASP	-	expression tag	UNP Q9GZU1
B	-20	TYR	-	expression tag	UNP Q9GZU1
B	-19	LYS	-	expression tag	UNP Q9GZU1
B	-18	ASP	-	expression tag	UNP Q9GZU1
B	-17	ASP	-	expression tag	UNP Q9GZU1
B	-16	ASP	-	expression tag	UNP Q9GZU1
B	-15	ASP	-	expression tag	UNP Q9GZU1
B	-14	LYS	-	expression tag	UNP Q9GZU1
B	-13	GLY	-	expression tag	UNP Q9GZU1
B	-12	GLY	-	expression tag	UNP Q9GZU1
B	-11	SER	-	expression tag	UNP Q9GZU1
B	-10	GLY	-	expression tag	UNP Q9GZU1
B	-9	GLY	-	expression tag	UNP Q9GZU1
B	-8	SER	-	expression tag	UNP Q9GZU1
B	-7	GLU	-	expression tag	UNP Q9GZU1
B	-6	ASN	-	expression tag	UNP Q9GZU1
B	-5	LEU	-	expression tag	UNP Q9GZU1
B	-4	TYR	-	expression tag	UNP Q9GZU1
B	-3	PHE	-	expression tag	UNP Q9GZU1
B	-2	GLN	-	expression tag	UNP Q9GZU1
B	-1	GLY	-	expression tag	UNP Q9GZU1
B	0	PRO	-	expression tag	UNP Q9GZU1
B	1	GLY	-	expression tag	UNP Q9GZU1
C	-47	MET	-	initiating methionine	UNP Q9GZU1
C	-46	HIS	-	expression tag	UNP Q9GZU1
C	-45	HIS	-	expression tag	UNP Q9GZU1
C	-44	HIS	-	expression tag	UNP Q9GZU1
C	-43	HIS	-	expression tag	UNP Q9GZU1
C	-42	HIS	-	expression tag	UNP Q9GZU1
C	-41	HIS	-	expression tag	UNP Q9GZU1
C	-40	HIS	-	expression tag	UNP Q9GZU1

*Continued on next page...*

*Continued from previous page...*

Chain	Residue	Modelled	Actual	Comment	Reference
C	-39	HIS	-	expression tag	UNP Q9GZU1
C	-38	GLY	-	expression tag	UNP Q9GZU1
C	-37	GLY	-	expression tag	UNP Q9GZU1
C	-36	SER	-	expression tag	UNP Q9GZU1
C	-35	ASP	-	expression tag	UNP Q9GZU1
C	-34	TYR	-	expression tag	UNP Q9GZU1
C	-33	LYS	-	expression tag	UNP Q9GZU1
C	-32	ASP	-	expression tag	UNP Q9GZU1
C	-31	HIS	-	expression tag	UNP Q9GZU1
C	-30	ASP	-	expression tag	UNP Q9GZU1
C	-29	GLY	-	expression tag	UNP Q9GZU1
C	-28	ASP	-	expression tag	UNP Q9GZU1
C	-27	TYR	-	expression tag	UNP Q9GZU1
C	-26	LYS	-	expression tag	UNP Q9GZU1
C	-25	ASP	-	expression tag	UNP Q9GZU1
C	-24	HIS	-	expression tag	UNP Q9GZU1
C	-23	ASP	-	expression tag	UNP Q9GZU1
C	-22	ILE	-	expression tag	UNP Q9GZU1
C	-21	ASP	-	expression tag	UNP Q9GZU1
C	-20	TYR	-	expression tag	UNP Q9GZU1
C	-19	LYS	-	expression tag	UNP Q9GZU1
C	-18	ASP	-	expression tag	UNP Q9GZU1
C	-17	ASP	-	expression tag	UNP Q9GZU1
C	-16	ASP	-	expression tag	UNP Q9GZU1
C	-15	ASP	-	expression tag	UNP Q9GZU1
C	-14	LYS	-	expression tag	UNP Q9GZU1
C	-13	GLY	-	expression tag	UNP Q9GZU1
C	-12	GLY	-	expression tag	UNP Q9GZU1
C	-11	SER	-	expression tag	UNP Q9GZU1
C	-10	GLY	-	expression tag	UNP Q9GZU1
C	-9	GLY	-	expression tag	UNP Q9GZU1
C	-8	SER	-	expression tag	UNP Q9GZU1
C	-7	GLU	-	expression tag	UNP Q9GZU1
C	-6	ASN	-	expression tag	UNP Q9GZU1
C	-5	LEU	-	expression tag	UNP Q9GZU1
C	-4	TYR	-	expression tag	UNP Q9GZU1
C	-3	PHE	-	expression tag	UNP Q9GZU1
C	-2	GLN	-	expression tag	UNP Q9GZU1
C	-1	GLY	-	expression tag	UNP Q9GZU1
C	0	PRO	-	expression tag	UNP Q9GZU1
C	1	GLY	-	expression tag	UNP Q9GZU1
D	-47	MET	-	initiating methionine	UNP Q9GZU1

*Continued on next page...*

*Continued from previous page...*

Chain	Residue	Modelled	Actual	Comment	Reference
D	-46	HIS	-	expression tag	UNP Q9GZU1
D	-45	HIS	-	expression tag	UNP Q9GZU1
D	-44	HIS	-	expression tag	UNP Q9GZU1
D	-43	HIS	-	expression tag	UNP Q9GZU1
D	-42	HIS	-	expression tag	UNP Q9GZU1
D	-41	HIS	-	expression tag	UNP Q9GZU1
D	-40	HIS	-	expression tag	UNP Q9GZU1
D	-39	HIS	-	expression tag	UNP Q9GZU1
D	-38	GLY	-	expression tag	UNP Q9GZU1
D	-37	GLY	-	expression tag	UNP Q9GZU1
D	-36	SER	-	expression tag	UNP Q9GZU1
D	-35	ASP	-	expression tag	UNP Q9GZU1
D	-34	TYR	-	expression tag	UNP Q9GZU1
D	-33	LYS	-	expression tag	UNP Q9GZU1
D	-32	ASP	-	expression tag	UNP Q9GZU1
D	-31	HIS	-	expression tag	UNP Q9GZU1
D	-30	ASP	-	expression tag	UNP Q9GZU1
D	-29	GLY	-	expression tag	UNP Q9GZU1
D	-28	ASP	-	expression tag	UNP Q9GZU1
D	-27	TYR	-	expression tag	UNP Q9GZU1
D	-26	LYS	-	expression tag	UNP Q9GZU1
D	-25	ASP	-	expression tag	UNP Q9GZU1
D	-24	HIS	-	expression tag	UNP Q9GZU1
D	-23	ASP	-	expression tag	UNP Q9GZU1
D	-22	ILE	-	expression tag	UNP Q9GZU1
D	-21	ASP	-	expression tag	UNP Q9GZU1
D	-20	TYR	-	expression tag	UNP Q9GZU1
D	-19	LYS	-	expression tag	UNP Q9GZU1
D	-18	ASP	-	expression tag	UNP Q9GZU1
D	-17	ASP	-	expression tag	UNP Q9GZU1
D	-16	ASP	-	expression tag	UNP Q9GZU1
D	-15	ASP	-	expression tag	UNP Q9GZU1
D	-14	LYS	-	expression tag	UNP Q9GZU1
D	-13	GLY	-	expression tag	UNP Q9GZU1
D	-12	GLY	-	expression tag	UNP Q9GZU1
D	-11	SER	-	expression tag	UNP Q9GZU1
D	-10	GLY	-	expression tag	UNP Q9GZU1
D	-9	GLY	-	expression tag	UNP Q9GZU1
D	-8	SER	-	expression tag	UNP Q9GZU1
D	-7	GLU	-	expression tag	UNP Q9GZU1
D	-6	ASN	-	expression tag	UNP Q9GZU1
D	-5	LEU	-	expression tag	UNP Q9GZU1

*Continued on next page...*

Continued from previous page...

Chain	Residue	Modelled	Actual	Comment	Reference
D	-4	TYR	-	expression tag	UNP Q9GZU1
D	-3	PHE	-	expression tag	UNP Q9GZU1
D	-2	GLN	-	expression tag	UNP Q9GZU1
D	-1	GLY	-	expression tag	UNP Q9GZU1
D	0	PRO	-	expression tag	UNP Q9GZU1
D	1	GLY	-	expression tag	UNP Q9GZU1

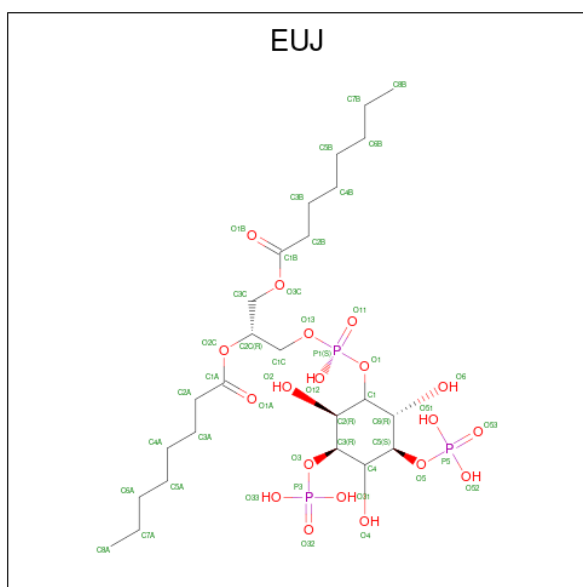
- Molecule 2 is an oligosaccharide called 2-acetamido-2-deoxy-beta-D-glucopyranose-(1-4)-2-acetamido-2-deoxy-beta-D-glucopyranose.



Mol	Chain	Residues	Atoms				AltConf	Trace
2	E	2	Total	C	N	O	0	0
			28	16	2	10		
2	F	2	Total	C	N	O	0	0
			28	16	2	10		
2	G	2	Total	C	N	O	0	0
			28	16	2	10		
2	H	2	Total	C	N	O	0	0
			28	16	2	10		

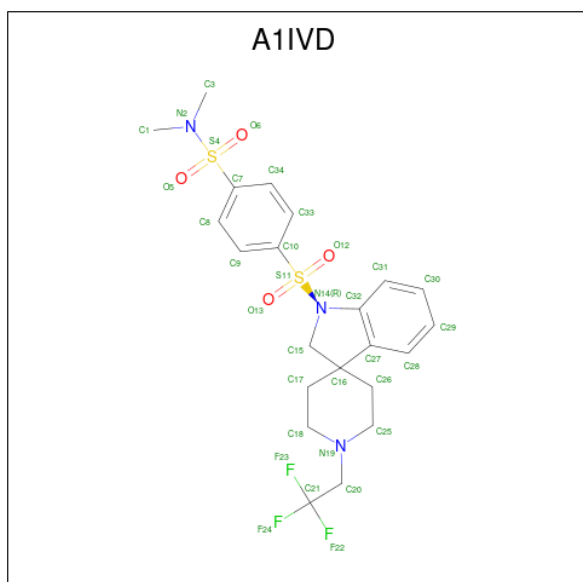
- Molecule 3 is (2R)-3-{[(S)-hydroxy{[(1S,2R,3R,4S,5S,6R)-2,4,6-trihydroxy-3,5-bis(phosphonooxy)cyclohexyl]oxy}phosphoryl]oxy}propane-1,2-diyl dioctanoate (CCD ID: EUJ) (formula: C<sub>25</sub>H<sub>49</sub>O<sub>19</sub>P<sub>3</sub>).





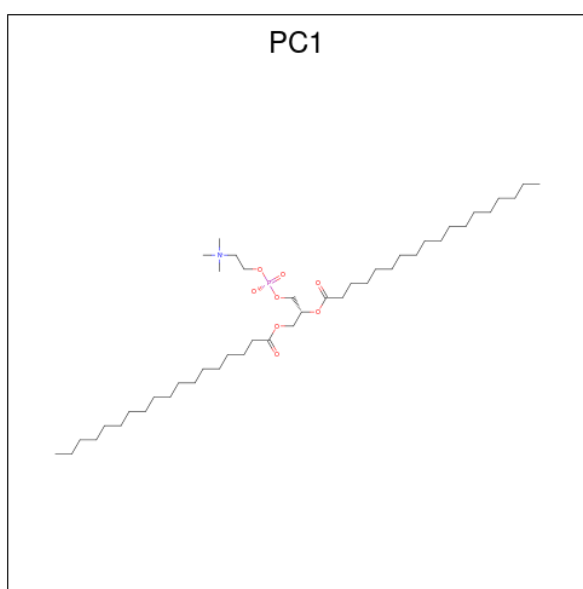
Mol	Chain	Residues	Atoms				AltConf
3	A	1	Total	C	O	P	0
			47	25	19	3	
3	B	1	Total	C	O	P	0
			47	25	19	3	
3	C	1	Total	C	O	P	0
			47	25	19	3	
3	D	1	Total	C	O	P	0
			47	25	19	3	

- Molecule 4 is N,N-dimethyl-4-[1'-[2,2,2-tris(fluoranyl)ethyl]spiro[2H-indole-3,4'-piperidine]-1-yl]sulfonyl-benzenesulfonamide (CCD ID: A1IVD) (formula:  $C_{22}H_{26}F_3N_3O_4S_2$ ) (labeled as "Ligand of Interest" by depositor).



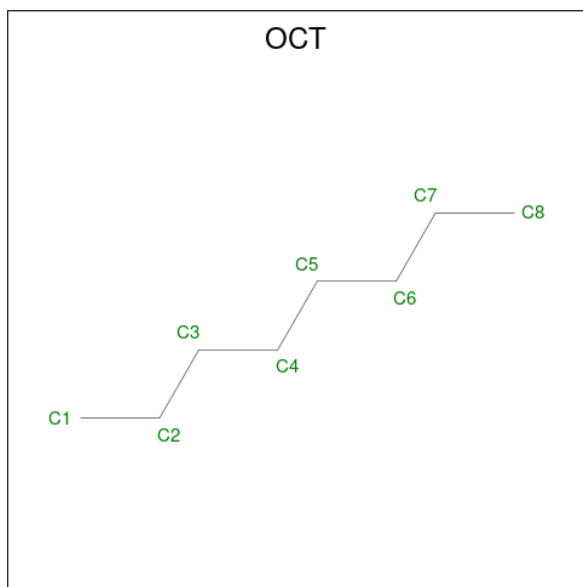
Mol	Chain	Residues	Atoms							AltConf
4	A	1	Total	C	F	H	N	O	S	0
			60	22	3	26	3	4	2	
4	B	1	Total	C	F	H	N	O	S	0
			60	22	3	26	3	4	2	
4	C	1	Total	C	F	H	N	O	S	0
			60	22	3	26	3	4	2	
4	D	1	Total	C	F	H	N	O	S	0
			60	22	3	26	3	4	2	

- Molecule 5 is 1,2-DIACYL-SN-GLYCERO-3-PHOSPHOCHOLINE (CCD ID: PC1) (formula:  $C_{44}H_{88}NO_8P$ ).



Mol	Chain	Residues	Atoms					AltConf
5	A	1	Total	C	N	O	P	0
			54	44	1	8	1	
5	B	1	Total	C	N	O	P	0
			54	44	1	8	1	
5	C	1	Total	C	N	O	P	0
			54	44	1	8	1	
5	D	1	Total	C	N	O	P	0
			54	44	1	8	1	

- Molecule 6 is N-OCTANE (CCD ID: OCT) (formula:  $C_8H_{18}$ ).



Mol	Chain	Residues	Atoms	AltConf
6	A	1	Total C 8 8	0
6	A	1	Total C 8 8	0
6	B	1	Total C 8 8	0
6	B	1	Total C 8 8	0
6	C	1	Total C 8 8	0
6	C	1	Total C 8 8	0
6	D	1	Total C 8 8	0
6	D	1	Total C 8 8	0

- Molecule 7 is water.

Mol	Chain	Residues	Atoms	AltConf
7	A	80	Total O 80 80	0
7	B	79	Total O 79 79	0
7	C	81	Total O 81 81	0
7	D	80	Total O 80 80	0

MolProbity failed to run properly - this section is therefore empty.

### 3 Experimental information

Property	Value	Source
EM reconstruction method	SINGLE PARTICLE	Depositor
Imposed symmetry	POINT, C4	Depositor
Number of particles used	210699	Depositor
Resolution determination method	FSC 0.143 CUT-OFF	Depositor
CTF correction method	PHASE FLIPPING AND AMPLITUDE CORRECTION	Depositor
Microscope	TFS KRIOS	Depositor
Voltage (kV)	300	Depositor
Electron dose ( $e^-/\text{\AA}^2$ )	42.95	Depositor
Minimum defocus (nm)	800	Depositor
Maximum defocus (nm)	2000	Depositor
Magnification	120000	Depositor
Image detector	TFS FALCON 4i (4k x 4k)	Depositor
Maximum map value	2.604	Depositor
Minimum map value	-1.216	Depositor
Average map value	0.003	Depositor
Map value standard deviation	0.040	Depositor
Recommended contour level	0.422	Depositor
Map size (Å)	379.42902, 379.42902, 379.42902	wwPDB
Map dimensions	590, 590, 590	wwPDB
Map angles (°)	90.0, 90.0, 90.0	wwPDB
Pixel spacing (Å)	0.6431, 0.6431, 0.6431	Depositor

## 4 Model quality [i](#)

### 4.1 Standard geometry [i](#)

MolProbity failed to run properly - this section is therefore empty.

### 4.2 Too-close contacts [i](#)

MolProbity failed to run properly - this section is therefore empty.

### 4.3 Torsion angles [i](#)

#### 4.3.1 Protein backbone [i](#)

MolProbity failed to run properly - this section is therefore empty.

#### 4.3.2 Protein sidechains [i](#)

MolProbity failed to run properly - this section is therefore empty.

#### 4.3.3 RNA [i](#)

MolProbity failed to run properly - this section is therefore empty.

### 4.4 Non-standard residues in protein, DNA, RNA chains [i](#)

There are no non-standard protein/DNA/RNA residues in this entry.

### 4.5 Carbohydrates [i](#)

8 monosaccharides are modelled in this entry.

In the following table, the Counts columns list the number of bonds (or angles) for which Mogul statistics could be retrieved, the number of bonds (or angles) that are observed in the model and the number of bonds (or angles) that are defined in the Chemical Component Dictionary. The Link column lists molecule types, if any, to which the group is linked. The Z score for a bond length (or angle) is the number of standard deviations the observed value is removed from the expected value. A bond length (or angle) with  $|Z| > 2$  is considered an outlier worth inspection. RMSZ is the root-mean-square of all Z scores of the bond lengths (or angles).

Mol	Type	Chain	Res	Link	Bond lengths			Bond angles		
					Counts	RMSZ	# Z  > 2	Counts	RMSZ	# Z  > 2
2	NAG	E	1	2,1	14,14,15	0.82	0	17,19,21	1.51	3 (17%)
2	NAG	E	2	2	14,14,15	0.80	0	17,19,21	0.97	0
2	NAG	F	1	2,1	14,14,15	0.82	0	17,19,21	1.52	3 (17%)
2	NAG	F	2	2	14,14,15	0.81	0	17,19,21	0.97	0
2	NAG	G	1	2,1	14,14,15	0.82	0	17,19,21	1.52	3 (17%)
2	NAG	G	2	2	14,14,15	0.80	0	17,19,21	0.97	0
2	NAG	H	1	2,1	14,14,15	0.82	0	17,19,21	1.52	3 (17%)
2	NAG	H	2	2	14,14,15	0.80	0	17,19,21	0.97	0

In the following table, the Chirals column lists the number of chiral outliers, the number of chiral centers analysed, the number of these observed in the model and the number defined in the Chemical Component Dictionary. Similar counts are reported in the Torsion and Rings columns. '-' means no outliers of that kind were identified.

Mol	Type	Chain	Res	Link	Chirals	Torsions	Rings
2	NAG	E	1	2,1	-	2/6/23/26	0/1/1/1
2	NAG	E	2	2	-	0/6/23/26	0/1/1/1
2	NAG	F	1	2,1	-	2/6/23/26	0/1/1/1
2	NAG	F	2	2	-	0/6/23/26	0/1/1/1
2	NAG	G	1	2,1	-	2/6/23/26	0/1/1/1
2	NAG	G	2	2	-	0/6/23/26	0/1/1/1
2	NAG	H	1	2,1	-	2/6/23/26	0/1/1/1
2	NAG	H	2	2	-	0/6/23/26	0/1/1/1

There are no bond length outliers.

All (12) bond angle outliers are listed below:

Mol	Chain	Res	Type	Atoms	Z	Observed(°)	Ideal(°)
2	H	1	NAG	C1-O5-C5	3.67	117.17	112.19
2	F	1	NAG	C1-O5-C5	3.67	117.16	112.19
2	E	1	NAG	C1-O5-C5	3.66	117.14	112.19
2	G	1	NAG	C1-O5-C5	3.66	117.14	112.19
2	H	1	NAG	C2-N2-C7	3.51	127.90	122.90
2	G	1	NAG	C2-N2-C7	3.48	127.86	122.90
2	E	1	NAG	C2-N2-C7	3.47	127.84	122.90
2	F	1	NAG	C2-N2-C7	3.46	127.83	122.90
2	H	1	NAG	O4-C4-C5	2.04	114.36	109.30
2	G	1	NAG	O4-C4-C5	2.02	114.32	109.30
2	E	1	NAG	O4-C4-C5	2.01	114.29	109.30
2	F	1	NAG	O4-C4-C5	2.01	114.29	109.30

There are no chirality outliers.

All (8) torsion outliers are listed below:

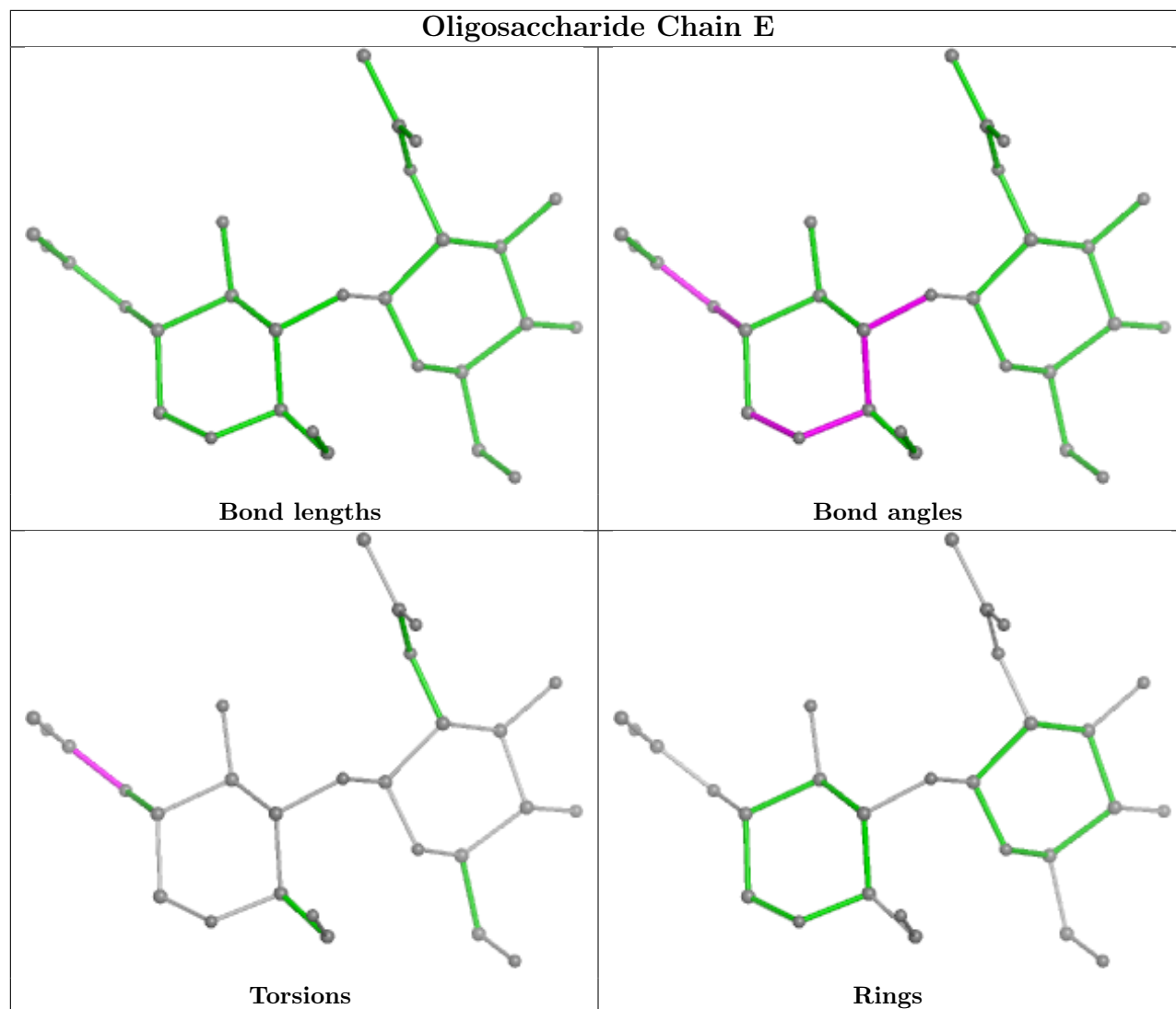
Mol	Chain	Res	Type	Atoms
2	E	1	NAG	C8-C7-N2-C2
2	E	1	NAG	O7-C7-N2-C2
2	F	1	NAG	C8-C7-N2-C2
2	F	1	NAG	O7-C7-N2-C2
2	G	1	NAG	C8-C7-N2-C2
2	G	1	NAG	O7-C7-N2-C2
2	H	1	NAG	C8-C7-N2-C2
2	H	1	NAG	O7-C7-N2-C2

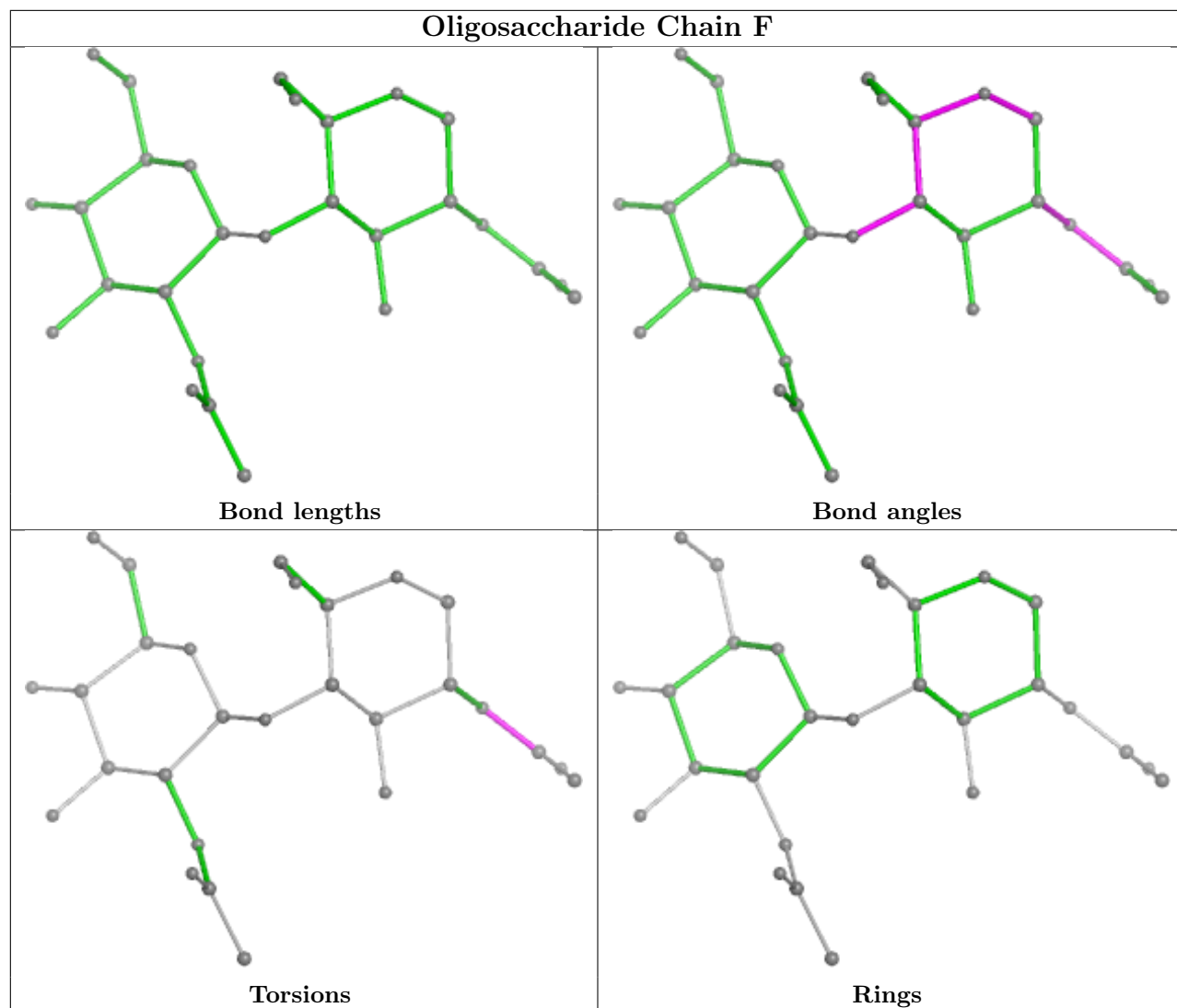
There are no ring outliers.

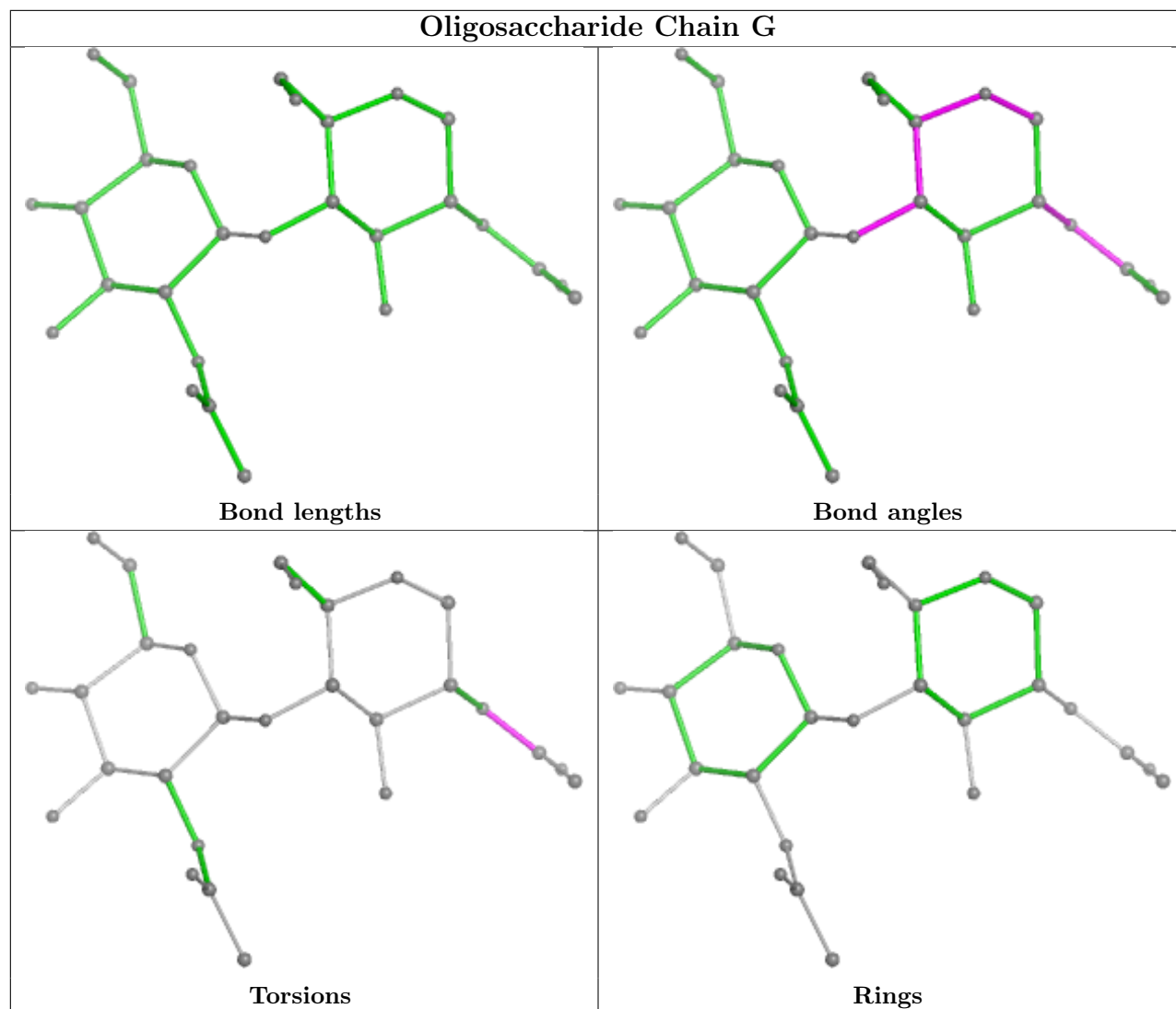
No monomer is involved in short contacts.

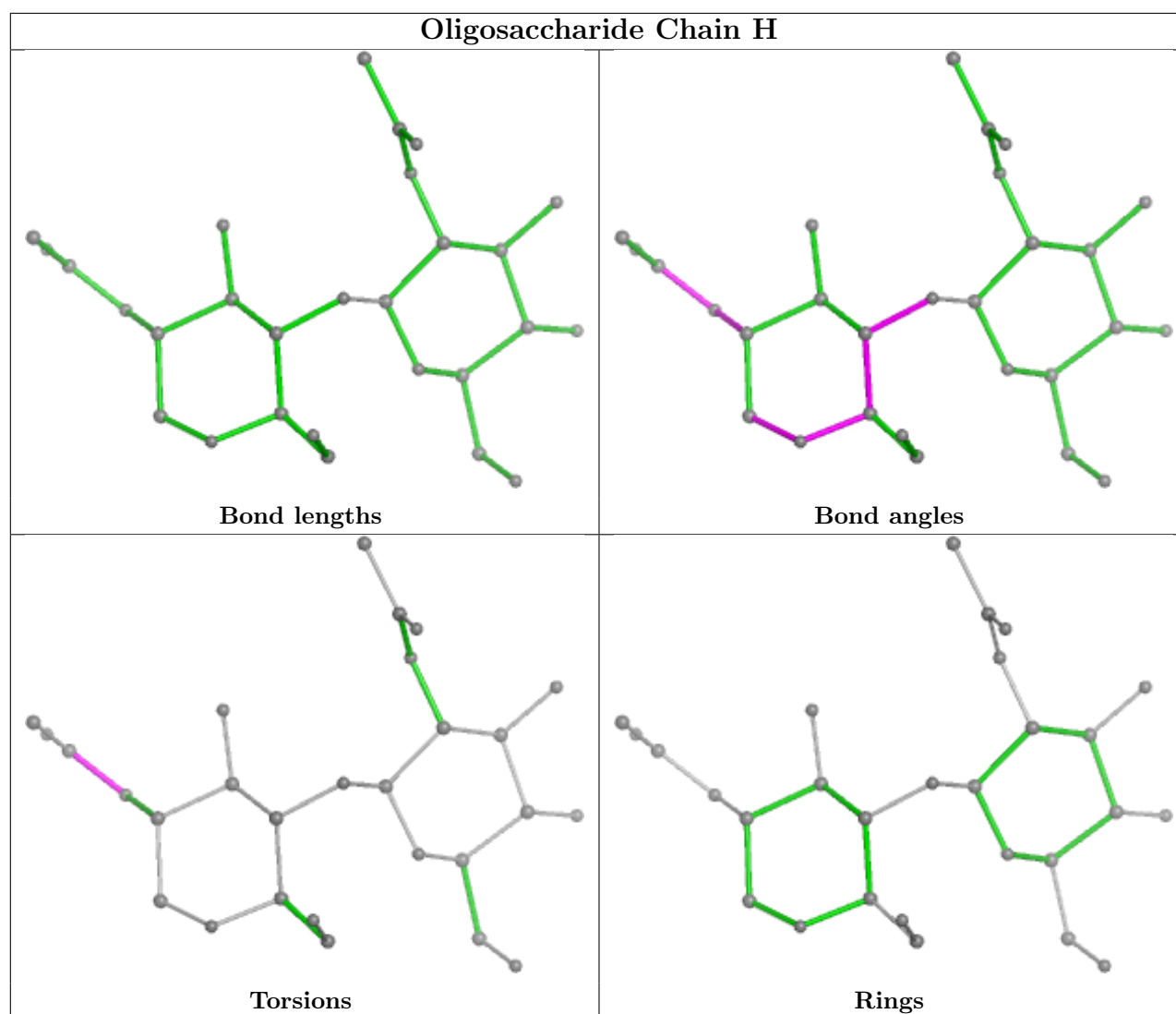
The following is a two-dimensional graphical depiction of Mogul quality analysis of bond lengths, bond angles, torsion angles, and ring geometry for oligosaccharide.











## 4.6 Ligand geometry [i](#)

20 ligands are modelled in this entry.

In the following table, the Counts columns list the number of bonds (or angles) for which Mogul statistics could be retrieved, the number of bonds (or angles) that are observed in the model and the number of bonds (or angles) that are defined in the Chemical Component Dictionary. The Link column lists molecule types, if any, to which the group is linked. The Z score for a bond length (or angle) is the number of standard deviations the observed value is removed from the expected value. A bond length (or angle) with  $|Z| > 2$  is considered an outlier worth inspection. RMSZ is the root-mean-square of all Z scores of the bond lengths (or angles).

Mol	Type	Chain	Res	Link	Bond lengths			Bond angles		
					Counts	RMSZ	$\# Z  > 2$	Counts	RMSZ	$\# Z  > 2$
3	EUJ	D	601	-	47,47,47	0.48	0	61,65,65	0.47	0
4	A1IVD	A	602	-	36,37,37	0.51	1 (2%)	52,59,59	0.81	2 (3%)
6	OCT	A	604	-	7,7,7	0.24	0	6,6,6	0.16	0

Mol	Type	Chain	Res	Link	Bond lengths			Bond angles		
					Counts	RMSZ	# Z  > 2	Counts	RMSZ	# Z  > 2
3	EUJ	C	601	-	47,47,47	0.48	0	61,65,65	0.47	0
6	OCT	B	605	-	7,7,7	0.24	0	6,6,6	0.19	0
4	A1IVD	D	602	-	36,37,37	0.52	1 (2%)	52,59,59	0.81	3 (5%)
3	EUJ	A	601	-	47,47,47	0.48	0	61,65,65	0.47	0
6	OCT	D	604	-	7,7,7	0.25	0	6,6,6	0.17	0
6	OCT	C	605	-	7,7,7	0.24	0	6,6,6	0.19	0
6	OCT	C	604	-	7,7,7	0.24	0	6,6,6	0.17	0
5	PC1	B	603	-	53,53,53	0.50	0	59,61,61	0.44	1 (1%)
6	OCT	A	605	-	7,7,7	0.24	0	6,6,6	0.19	0
5	PC1	D	603	-	53,53,53	0.50	0	59,61,61	0.44	1 (1%)
5	PC1	A	603	-	53,53,53	0.50	0	59,61,61	0.44	1 (1%)
6	OCT	B	604	-	7,7,7	0.24	0	6,6,6	0.17	0
3	EUJ	B	601	-	47,47,47	0.48	0	61,65,65	0.47	0
6	OCT	D	605	-	7,7,7	0.24	0	6,6,6	0.19	0
4	A1IVD	B	602	-	36,37,37	0.51	1 (2%)	52,59,59	0.81	3 (5%)
4	A1IVD	C	602	-	36,37,37	0.52	1 (2%)	52,59,59	0.81	2 (3%)
5	PC1	C	603	-	53,53,53	0.50	0	59,61,61	0.44	1 (1%)

In the following table, the Chirals column lists the number of chiral outliers, the number of chiral centers analysed, the number of these observed in the model and the number defined in the Chemical Component Dictionary. Similar counts are reported in the Torsion and Rings columns. '-' means no outliers of that kind were identified.

Mol	Type	Chain	Res	Link	Chirals	Torsions	Rings
3	EUJ	D	601	-	-	8/44/68/68	0/1/1/1
4	A1IVD	A	602	-	-	0/29/56/56	0/4/4/4
6	OCT	A	604	-	-	3/5/5/5	-
3	EUJ	C	601	-	-	8/44/68/68	0/1/1/1
6	OCT	B	605	-	-	1/5/5/5	-
4	A1IVD	D	602	-	-	0/29/56/56	0/4/4/4
3	EUJ	A	601	-	-	8/44/68/68	0/1/1/1
6	OCT	D	604	-	-	3/5/5/5	-
6	OCT	C	605	-	-	1/5/5/5	-
6	OCT	C	604	-	-	3/5/5/5	-
5	PC1	B	603	-	-	30/57/57/57	-
6	OCT	A	605	-	-	1/5/5/5	-
5	PC1	D	603	-	-	30/57/57/57	-
5	PC1	A	603	-	-	30/57/57/57	-
6	OCT	B	604	-	-	3/5/5/5	-

Continued on next page...

*Continued from previous page...*

Mol	Type	Chain	Res	Link	Chirals	Torsions	Rings
3	EUJ	B	601	-	-	8/44/68/68	0/1/1/1
6	OCT	D	605	-	-	1/5/5/5	-
4	A1IVD	B	602	-	-	0/29/56/56	0/4/4/4
4	A1IVD	C	602	-	-	0/29/56/56	0/4/4/4
5	PC1	C	603	-	-	30/57/57/57	-

All (4) bond length outliers are listed below:

Mol	Chain	Res	Type	Atoms	Z	Observed(Å)	Ideal(Å)
4	D	602	A1IVD	C20-C21	2.51	1.53	1.50
4	B	602	A1IVD	C20-C21	2.49	1.53	1.50
4	C	602	A1IVD	C20-C21	2.49	1.53	1.50
4	A	602	A1IVD	C20-C21	2.44	1.53	1.50

All (14) bond angle outliers are listed below:

Mol	Chain	Res	Type	Atoms	Z	Observed(°)	Ideal(°)
4	A	602	A1IVD	C25-C26-C16	-2.33	110.82	112.93
4	C	602	A1IVD	C25-C26-C16	-2.33	110.82	112.93
4	D	602	A1IVD	C25-C26-C16	-2.33	110.83	112.93
4	B	602	A1IVD	C25-C26-C16	-2.29	110.86	112.93
5	C	603	PC1	O12-P-O14	2.21	123.18	112.24
5	B	603	PC1	O12-P-O14	2.21	123.18	112.24
5	A	603	PC1	O12-P-O14	2.21	123.18	112.24
5	D	603	PC1	O12-P-O14	2.21	123.16	112.24
4	A	602	A1IVD	C31-C32-N14	2.14	130.21	127.66
4	C	602	A1IVD	C31-C32-N14	2.14	130.21	127.66
4	B	602	A1IVD	C31-C32-N14	2.13	130.20	127.66
4	D	602	A1IVD	C31-C32-N14	2.09	130.15	127.66
4	B	602	A1IVD	C18-N19-C20	-2.03	108.19	111.81
4	D	602	A1IVD	C18-N19-C20	-2.01	108.23	111.81

There are no chirality outliers.

All (168) torsion outliers are listed below:

Mol	Chain	Res	Type	Atoms
3	A	601	EUJ	C1-O1-P1-O12
3	A	601	EUJ	C2B-C1B-O3C-C3C
3	A	601	EUJ	O1B-C1B-O3C-C3C
3	B	601	EUJ	C1-O1-P1-O12
3	B	601	EUJ	C2B-C1B-O3C-C3C

*Continued on next page...*

*Continued from previous page...*

Mol	Chain	Res	Type	Atoms
3	B	601	EUJ	O1B-C1B-O3C-C3C
3	C	601	EUJ	C1-O1-P1-O12
3	C	601	EUJ	C2B-C1B-O3C-C3C
3	C	601	EUJ	O1B-C1B-O3C-C3C
3	D	601	EUJ	C1-O1-P1-O12
3	D	601	EUJ	C2B-C1B-O3C-C3C
3	D	601	EUJ	O1B-C1B-O3C-C3C
5	A	603	PC1	C11-O13-P-O14
5	A	603	PC1	C1-O11-P-O12
5	A	603	PC1	C1-O11-P-O14
5	A	603	PC1	C1-O11-P-O13
5	A	603	PC1	C22-C21-O21-C2
5	B	603	PC1	C11-O13-P-O14
5	B	603	PC1	C1-O11-P-O12
5	B	603	PC1	C1-O11-P-O14
5	B	603	PC1	C1-O11-P-O13
5	B	603	PC1	C22-C21-O21-C2
5	C	603	PC1	C11-O13-P-O14
5	C	603	PC1	C1-O11-P-O12
5	C	603	PC1	C1-O11-P-O14
5	C	603	PC1	C1-O11-P-O13
5	C	603	PC1	C22-C21-O21-C2
5	D	603	PC1	C11-O13-P-O14
5	D	603	PC1	C1-O11-P-O12
5	D	603	PC1	C1-O11-P-O14
5	D	603	PC1	C1-O11-P-O13
5	D	603	PC1	C22-C21-O21-C2
5	A	603	PC1	O22-C21-O21-C2
5	B	603	PC1	O22-C21-O21-C2
5	C	603	PC1	O22-C21-O21-C2
5	D	603	PC1	O22-C21-O21-C2
5	B	603	PC1	C32-C33-C34-C35
5	D	603	PC1	C32-C33-C34-C35
5	A	603	PC1	C32-C33-C34-C35
5	C	603	PC1	C32-C33-C34-C35
5	B	603	PC1	C29-C2A-C2B-C2C
5	C	603	PC1	C25-C26-C27-C28
5	C	603	PC1	C29-C2A-C2B-C2C
5	D	603	PC1	C29-C2A-C2B-C2C
5	A	603	PC1	C25-C26-C27-C28
5	A	603	PC1	C29-C2A-C2B-C2C
5	B	603	PC1	C25-C26-C27-C28

*Continued on next page...*

*Continued from previous page...*

Mol	Chain	Res	Type	Atoms
5	D	603	PC1	C25-C26-C27-C28
5	A	603	PC1	C32-C31-O31-C3
5	B	603	PC1	C32-C31-O31-C3
5	D	603	PC1	C32-C31-O31-C3
5	A	603	PC1	C2D-C2E-C2F-C2G
5	B	603	PC1	C2D-C2E-C2F-C2G
5	C	603	PC1	C2D-C2E-C2F-C2G
5	C	603	PC1	C35-C36-C37-C38
5	D	603	PC1	C2D-C2E-C2F-C2G
5	D	603	PC1	C35-C36-C37-C38
5	A	603	PC1	C35-C36-C37-C38
5	A	603	PC1	C3D-C3E-C3F-C3G
5	B	603	PC1	C35-C36-C37-C38
5	C	603	PC1	C24-C25-C26-C27
5	C	603	PC1	C3D-C3E-C3F-C3G
5	D	603	PC1	C3D-C3E-C3F-C3G
6	A	604	OCT	C3-C4-C5-C6
6	B	604	OCT	C3-C4-C5-C6
6	C	604	OCT	C3-C4-C5-C6
6	D	604	OCT	C3-C4-C5-C6
5	A	603	PC1	C24-C25-C26-C27
5	B	603	PC1	C24-C25-C26-C27
5	B	603	PC1	C3D-C3E-C3F-C3G
5	D	603	PC1	C24-C25-C26-C27
5	C	603	PC1	C32-C31-O31-C3
5	C	603	PC1	O32-C31-O31-C3
5	A	603	PC1	C2A-C2B-C2C-C2D
5	B	603	PC1	C2A-C2B-C2C-C2D
5	C	603	PC1	C2A-C2B-C2C-C2D
5	D	603	PC1	C2A-C2B-C2C-C2D
5	A	603	PC1	O32-C31-O31-C3
5	B	603	PC1	O32-C31-O31-C3
5	D	603	PC1	O32-C31-O31-C3
5	C	603	PC1	C33-C34-C35-C36
5	D	603	PC1	C33-C34-C35-C36
5	A	603	PC1	C33-C34-C35-C36
5	B	603	PC1	C33-C34-C35-C36
6	A	604	OCT	C2-C3-C4-C5
6	D	604	OCT	C2-C3-C4-C5
6	C	604	OCT	C2-C3-C4-C5
5	A	603	PC1	C11-O13-P-O11
5	B	603	PC1	C11-O13-P-O11

*Continued on next page...*



*Continued from previous page...*

Mol	Chain	Res	Type	Atoms
5	C	603	PC1	C11-O13-P-O11
5	D	603	PC1	C11-O13-P-O11
5	C	603	PC1	C2E-C2F-C2G-C2H
5	A	603	PC1	C2E-C2F-C2G-C2H
6	B	604	OCT	C2-C3-C4-C5
5	B	603	PC1	C2E-C2F-C2G-C2H
5	D	603	PC1	C2E-C2F-C2G-C2H
3	A	601	EUJ	C1-O1-P1-O13
3	B	601	EUJ	C1-O1-P1-O13
3	C	601	EUJ	C1-O1-P1-O13
3	D	601	EUJ	C1-O1-P1-O13
5	C	603	PC1	C3B-C3C-C3D-C3E
5	B	603	PC1	C3A-C3B-C3C-C3D
5	D	603	PC1	C3A-C3B-C3C-C3D
5	A	603	PC1	C3A-C3B-C3C-C3D
3	A	601	EUJ	C4-C3-O3-P3
3	D	601	EUJ	C4-C3-O3-P3
5	C	603	PC1	C3A-C3B-C3C-C3D
5	A	603	PC1	C3B-C3C-C3D-C3E
5	D	603	PC1	C3B-C3C-C3D-C3E
5	B	603	PC1	C3B-C3C-C3D-C3E
3	A	601	EUJ	C1-O1-P1-O11
3	B	601	EUJ	C1-O1-P1-O11
3	C	601	EUJ	C1-O1-P1-O11
3	D	601	EUJ	C1-O1-P1-O11
5	B	603	PC1	C38-C39-C3A-C3B
3	A	601	EUJ	O2C-C1A-C2A-C3A
3	A	601	EUJ	C2-C3-O3-P3
3	B	601	EUJ	C2-C3-O3-P3
3	B	601	EUJ	C4-C3-O3-P3
3	C	601	EUJ	C2-C3-O3-P3
3	C	601	EUJ	C4-C3-O3-P3
3	D	601	EUJ	C2-C3-O3-P3
5	A	603	PC1	C38-C39-C3A-C3B
5	D	603	PC1	C38-C39-C3A-C3B
3	C	601	EUJ	O2C-C1A-C2A-C3A
3	D	601	EUJ	O2C-C1A-C2A-C3A
5	D	603	PC1	C11-O13-P-O12
5	A	603	PC1	O11-C1-C2-C3
5	C	603	PC1	O11-C1-C2-C3
5	A	603	PC1	O11-C1-C2-O21
5	B	603	PC1	O11-C1-C2-O21

*Continued on next page...*

*Continued from previous page...*

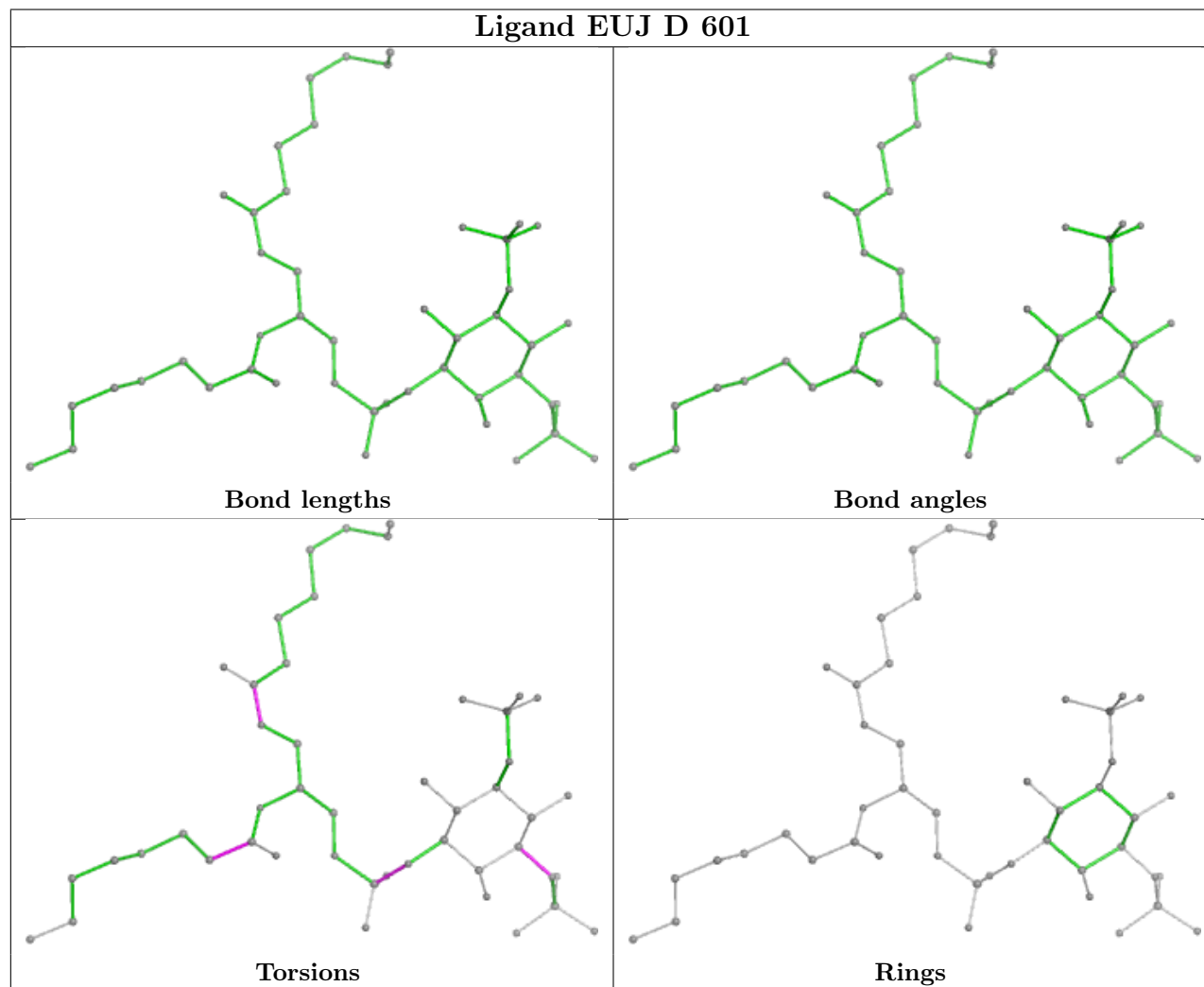
Mol	Chain	Res	Type	Atoms
5	C	603	PC1	O11-C1-C2-O21
5	D	603	PC1	O11-C1-C2-O21
5	C	603	PC1	C38-C39-C3A-C3B
3	B	601	EUJ	O2C-C1A-C2A-C3A
5	B	603	PC1	O11-C1-C2-C3
5	D	603	PC1	O11-C1-C2-C3
6	C	605	OCT	C4-C5-C6-C7
5	D	603	PC1	C27-C28-C29-C2A
5	A	603	PC1	C27-C28-C29-C2A
5	B	603	PC1	C27-C28-C29-C2A
6	D	605	OCT	C4-C5-C6-C7
6	A	605	OCT	C4-C5-C6-C7
6	B	605	OCT	C4-C5-C6-C7
5	C	603	PC1	C27-C28-C29-C2A
6	B	604	OCT	C1-C2-C3-C4
6	C	604	OCT	C1-C2-C3-C4
6	D	604	OCT	C1-C2-C3-C4
6	A	604	OCT	C1-C2-C3-C4
5	C	603	PC1	C23-C24-C25-C26
5	D	603	PC1	C23-C24-C25-C26
5	A	603	PC1	C23-C24-C25-C26
5	B	603	PC1	C23-C24-C25-C26
5	B	603	PC1	C22-C23-C24-C25
5	A	603	PC1	C22-C23-C24-C25
5	D	603	PC1	C22-C23-C24-C25
5	C	603	PC1	C22-C23-C24-C25
5	C	603	PC1	O21-C21-C22-C23
5	A	603	PC1	O21-C21-C22-C23
5	B	603	PC1	O21-C21-C22-C23
5	D	603	PC1	O21-C21-C22-C23
5	B	603	PC1	O22-C21-C22-C23
5	D	603	PC1	O22-C21-C22-C23
5	A	603	PC1	O22-C21-C22-C23
5	C	603	PC1	O22-C21-C22-C23
5	A	603	PC1	C11-O13-P-O12
5	B	603	PC1	C11-O13-P-O12
5	C	603	PC1	C11-O13-P-O12

There are no ring outliers.

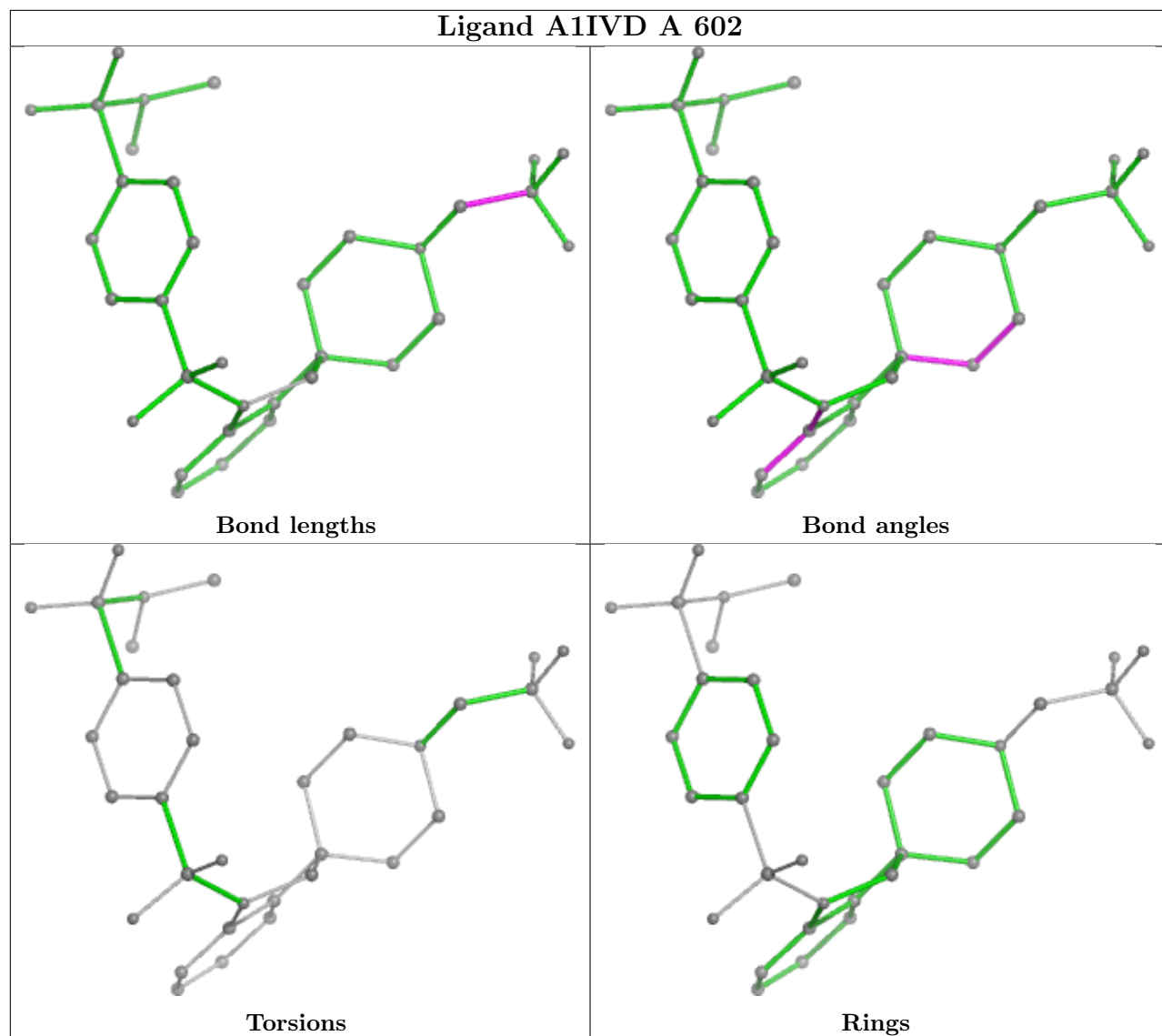
No monomer is involved in short contacts.

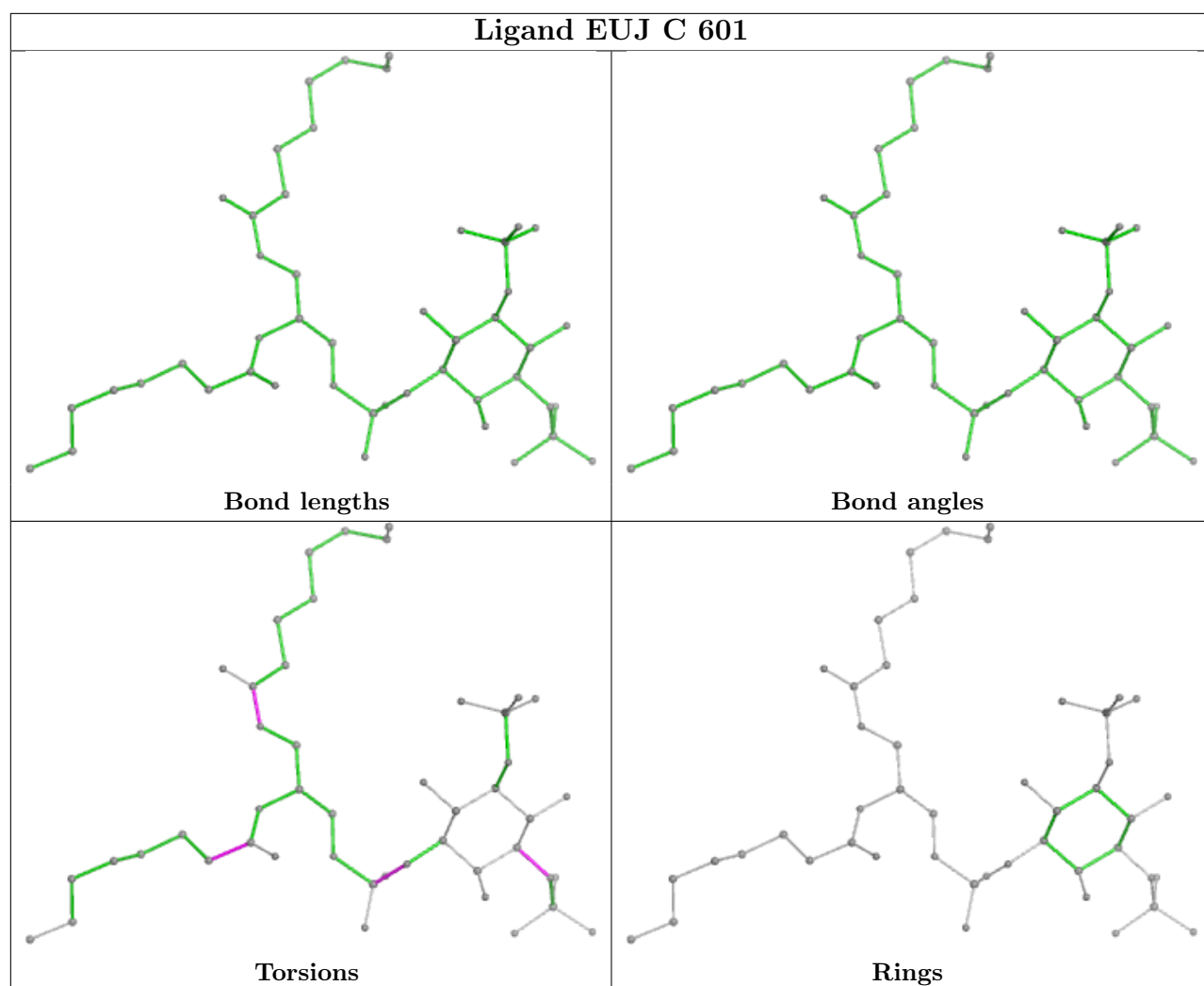
The following is a two-dimensional graphical depiction of Mogul quality analysis of bond lengths, bond angles, torsion angles, and ring geometry for all instances of the Ligand of Interest. In

addition, ligands with molecular weight > 250 and outliers as shown on the validation Tables will also be included. For torsion angles, if less than 5% of the Mogul distribution of torsion angles is within 10 degrees of the torsion angle in question, then that torsion angle is considered an outlier. Any bond that is central to one or more torsion angles identified as an outlier by Mogul will be highlighted in the graph. For rings, the root-mean-square deviation (RMSD) between the ring in question and similar rings identified by Mogul is calculated over all ring torsion angles. If the average RMSD is greater than 60 degrees and the minimal RMSD between the ring in question and any Mogul-identified rings is also greater than 60 degrees, then that ring is considered an outlier. The outliers are highlighted in purple. The color gray indicates Mogul did not find sufficient equivalents in the CSD to analyse the geometry.

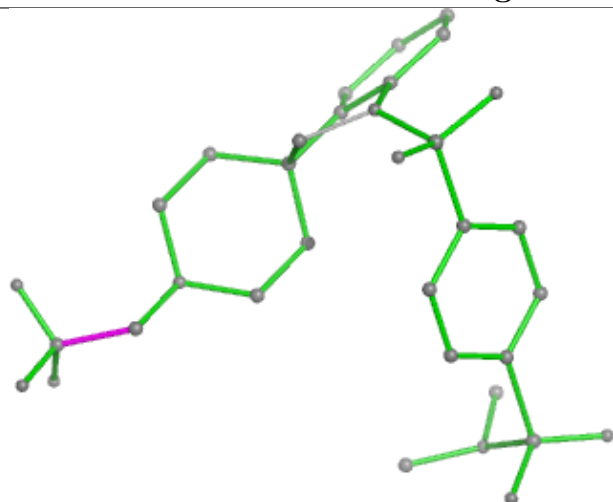


## Ligand A1IVD A 602

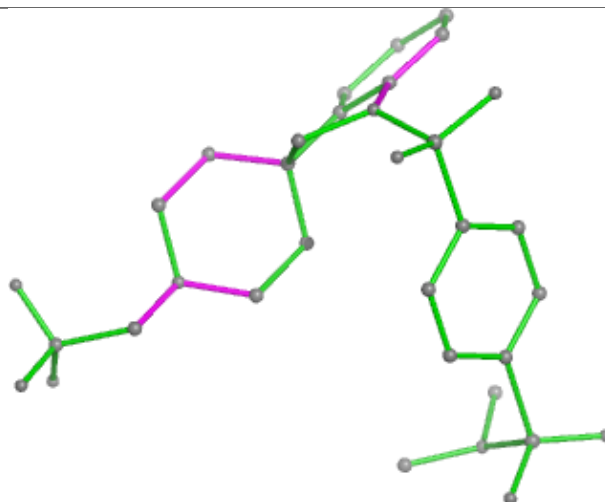




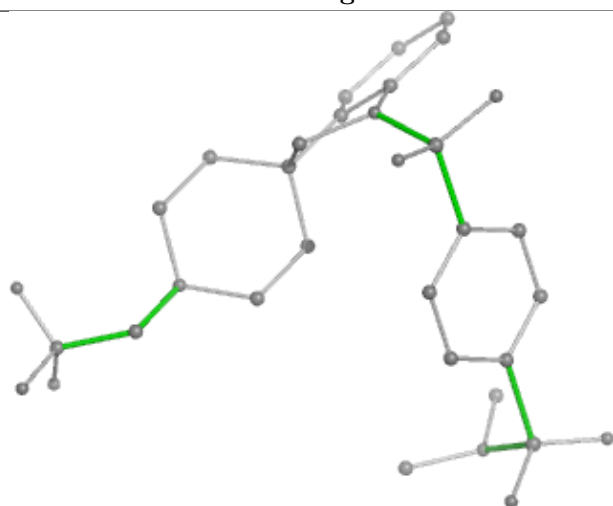
## Ligand A1IVD D 602



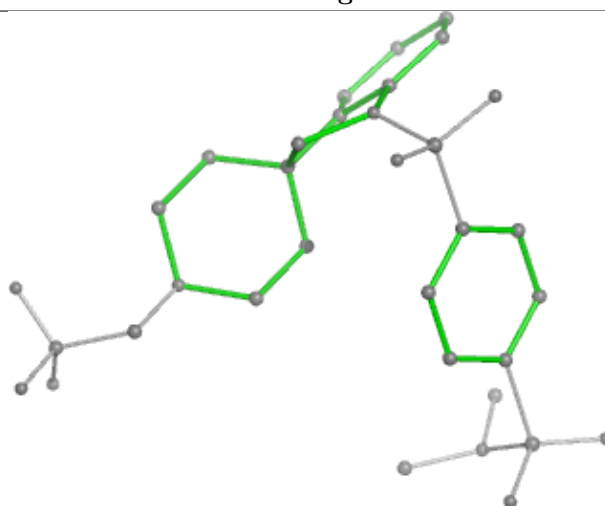
Bond lengths



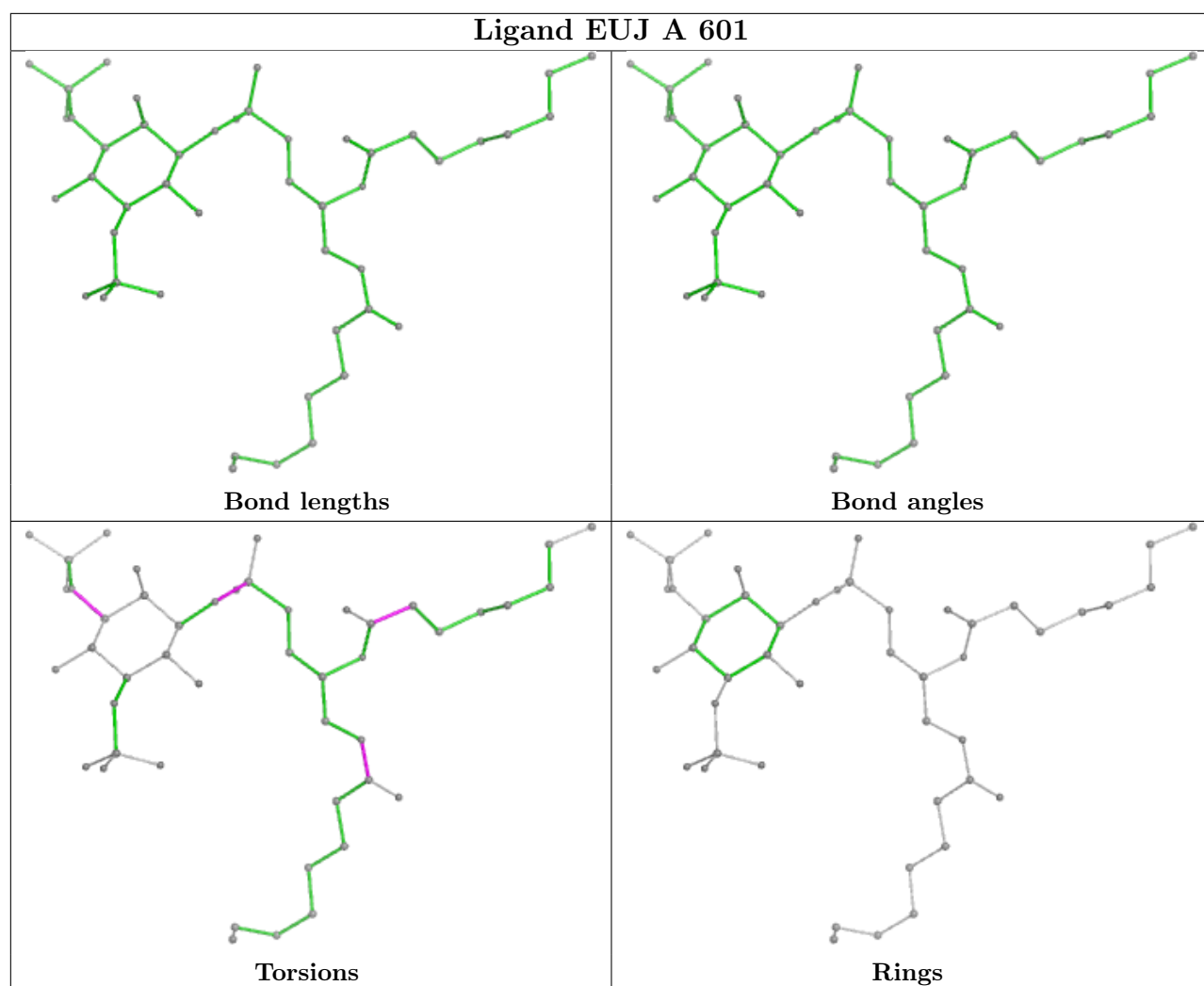
Bond angles

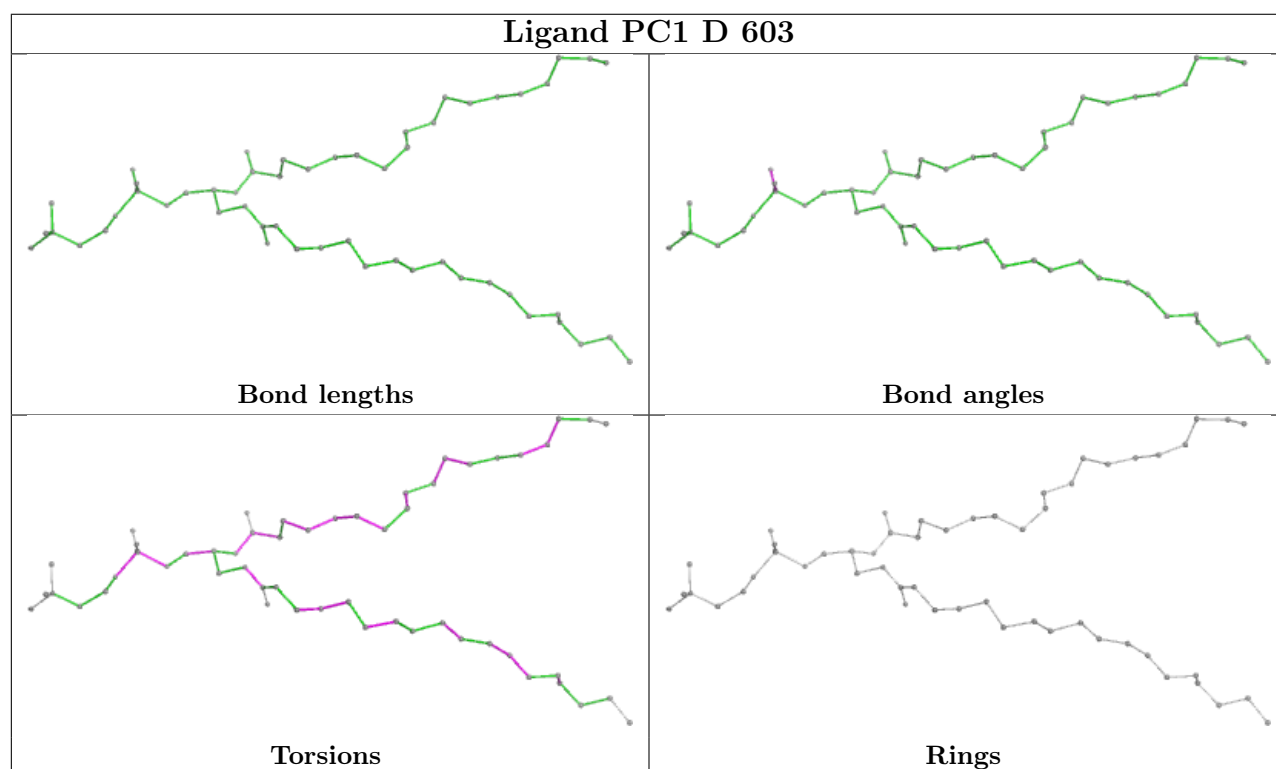
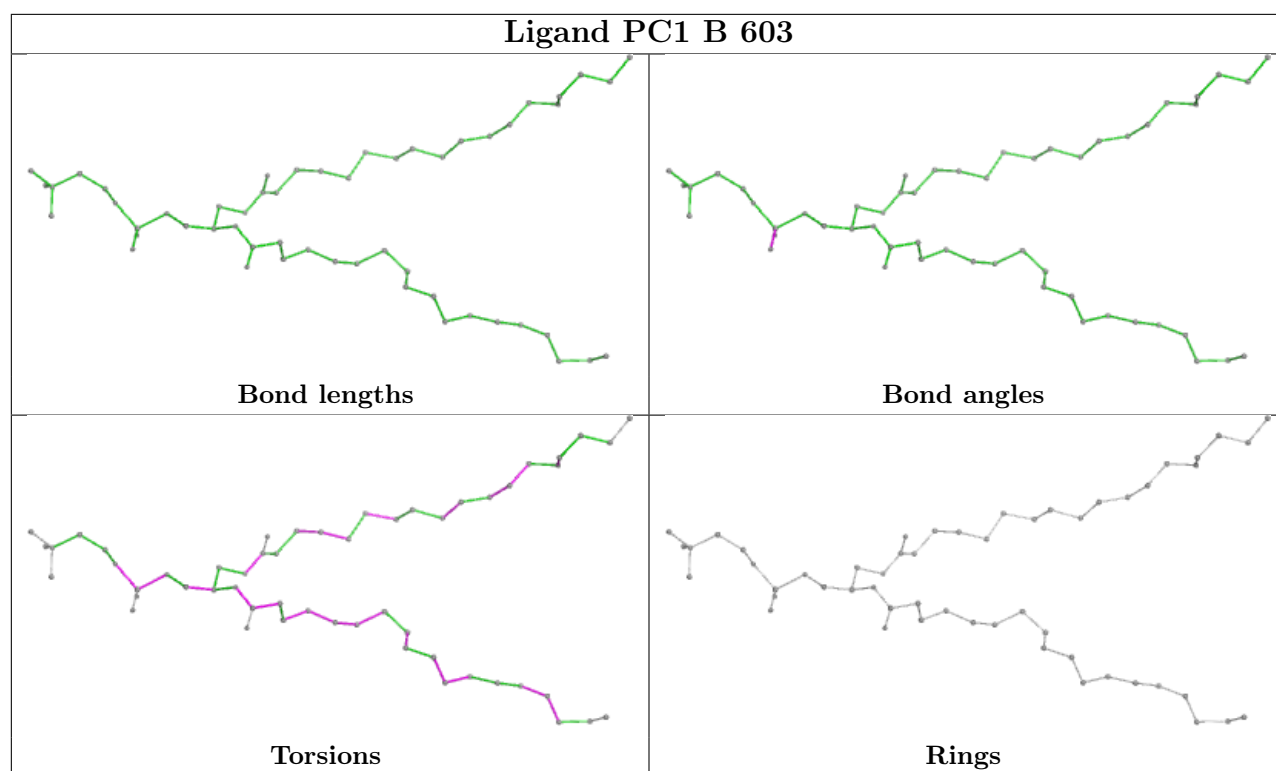


Torsions

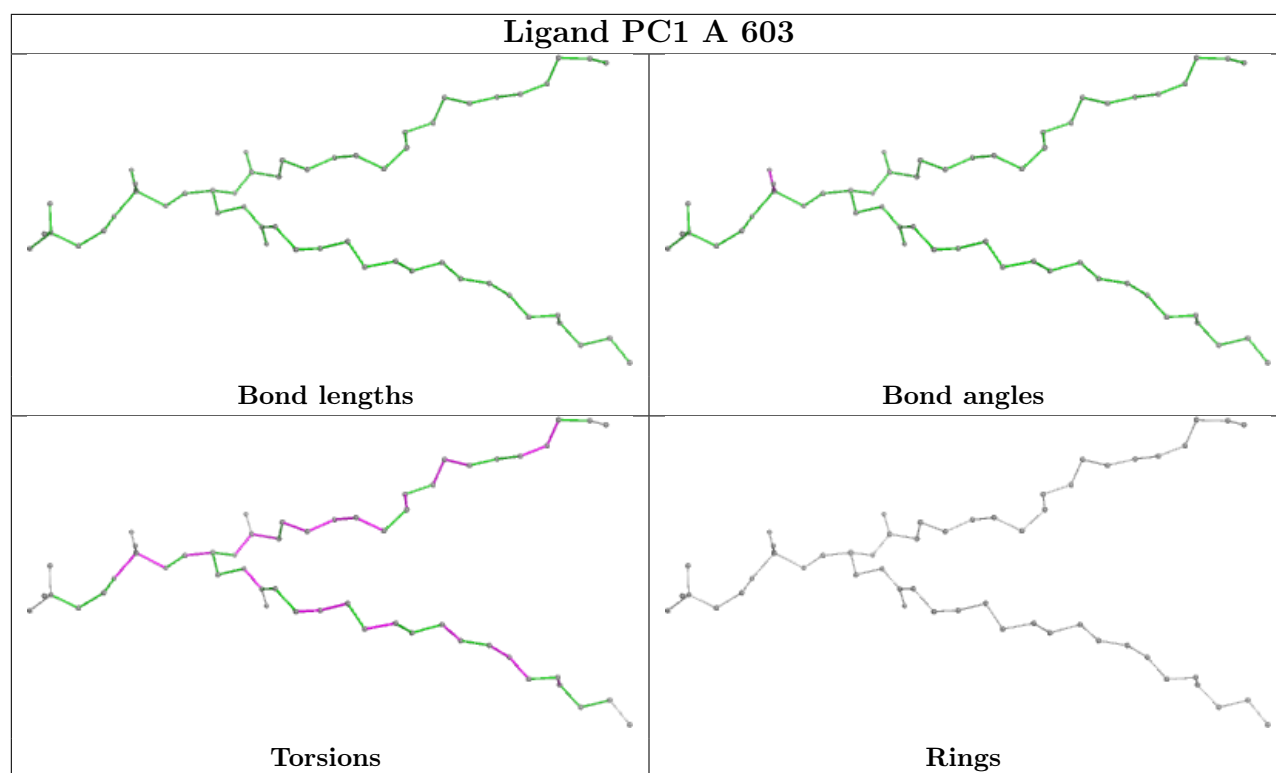


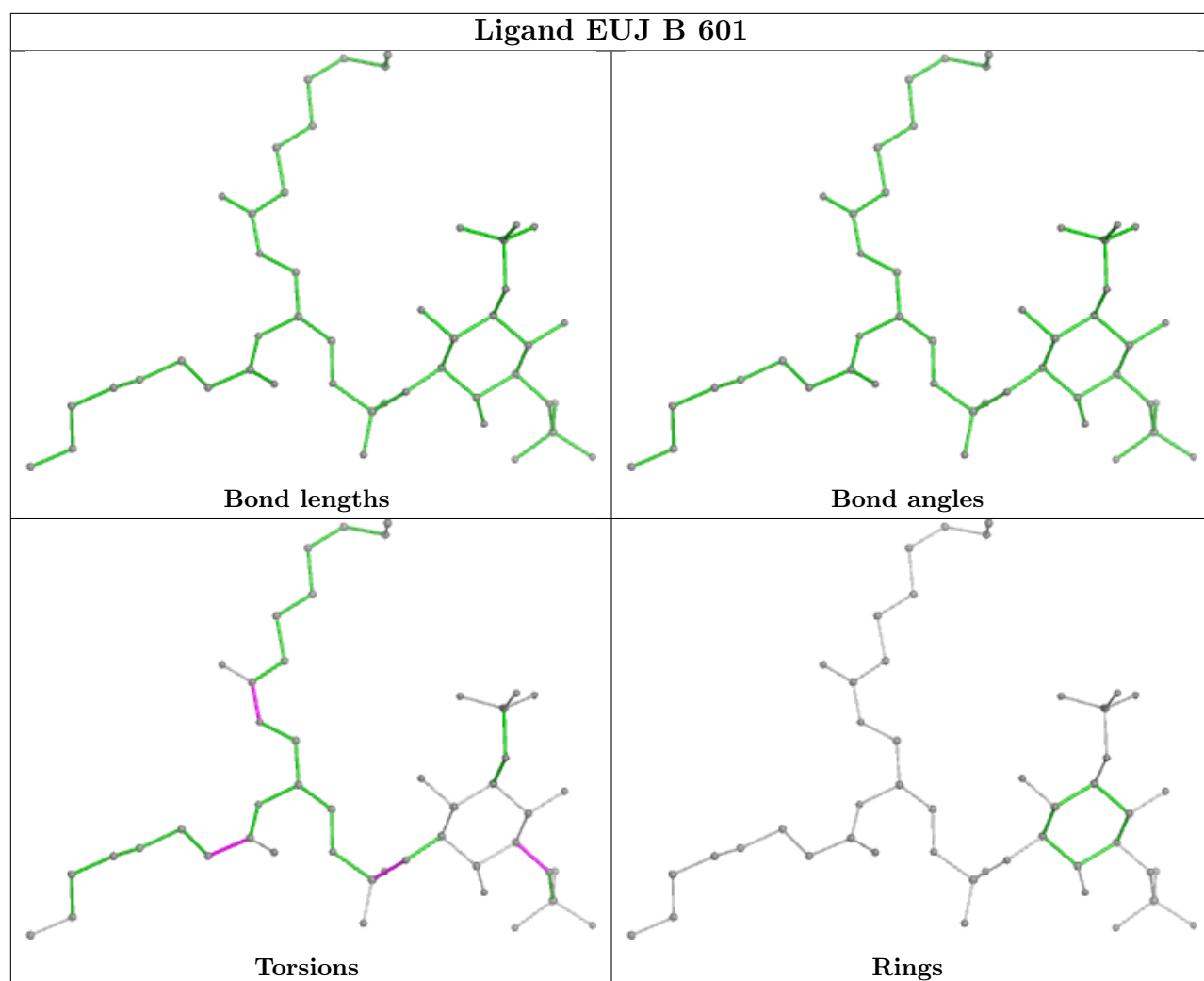
Rings



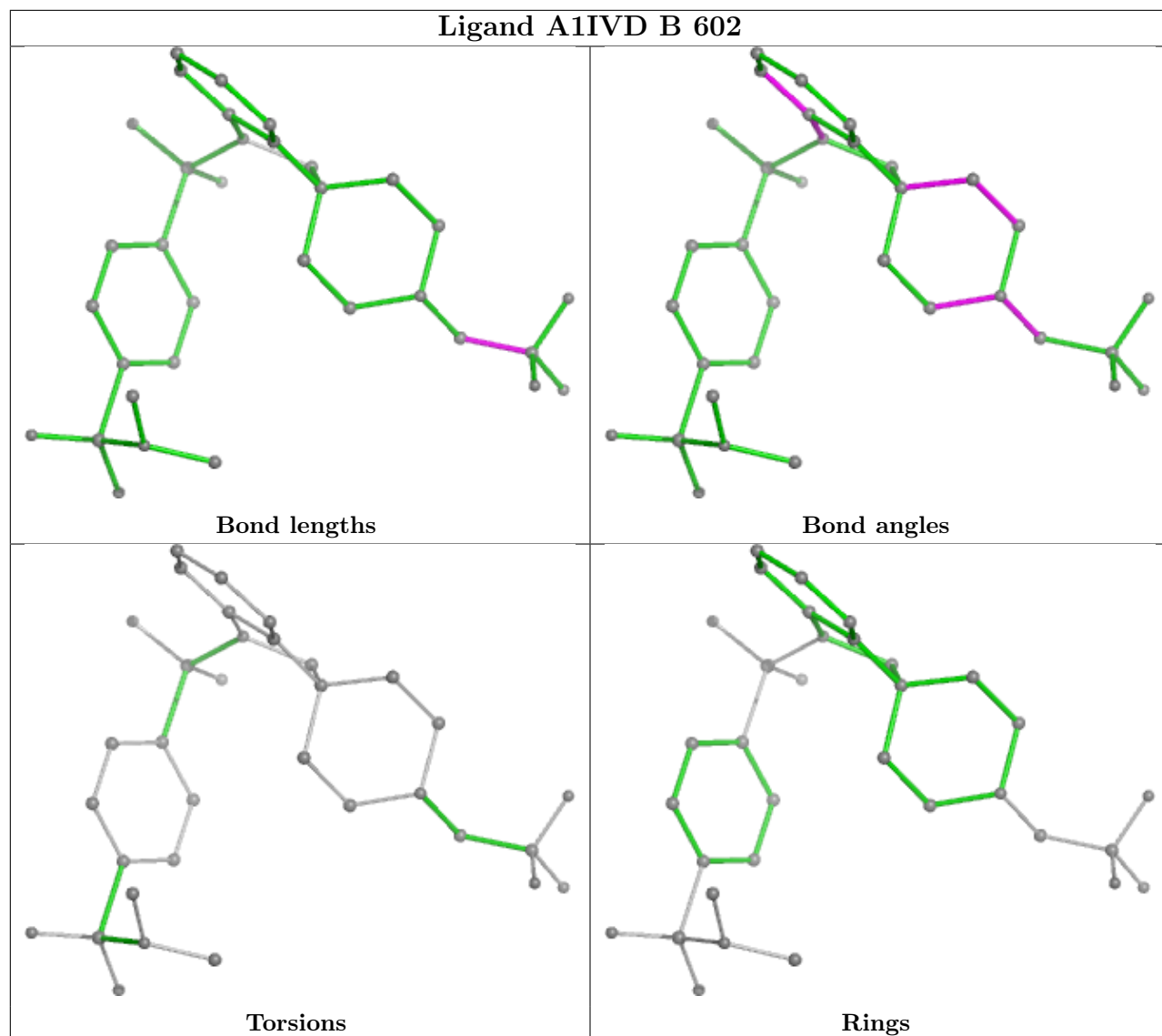




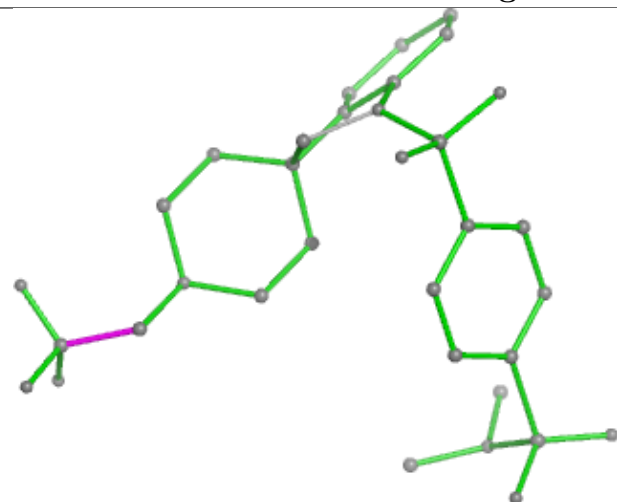




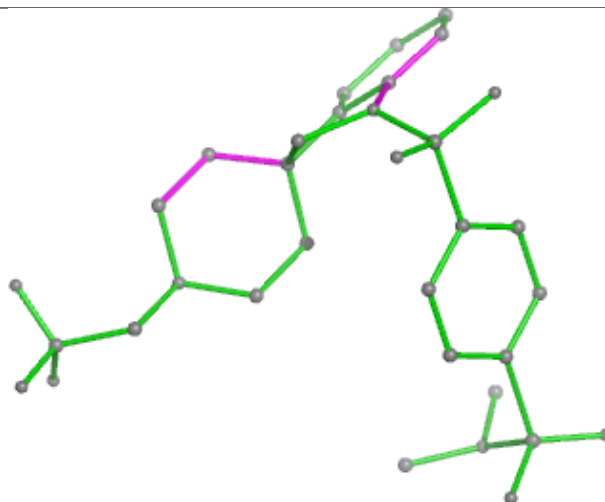
## Ligand A1IVD B 602



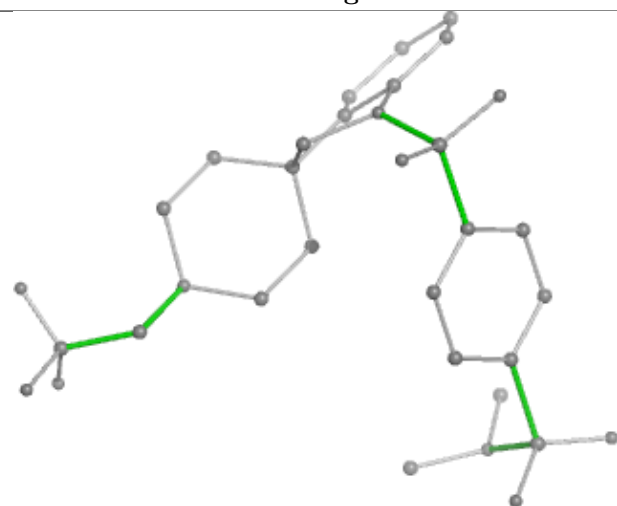
## Ligand A1IVD C 602



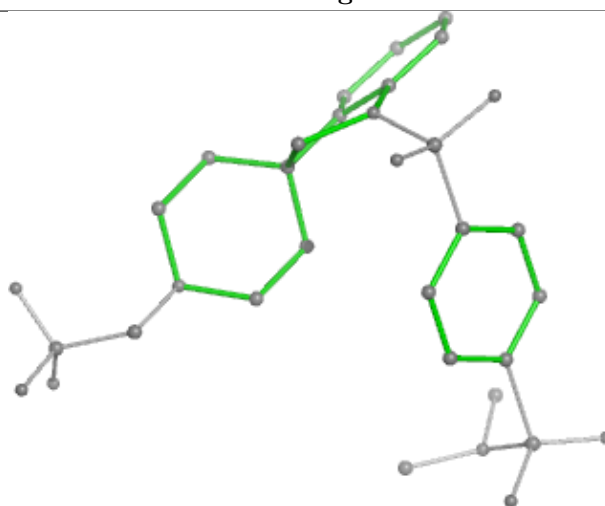
Bond lengths



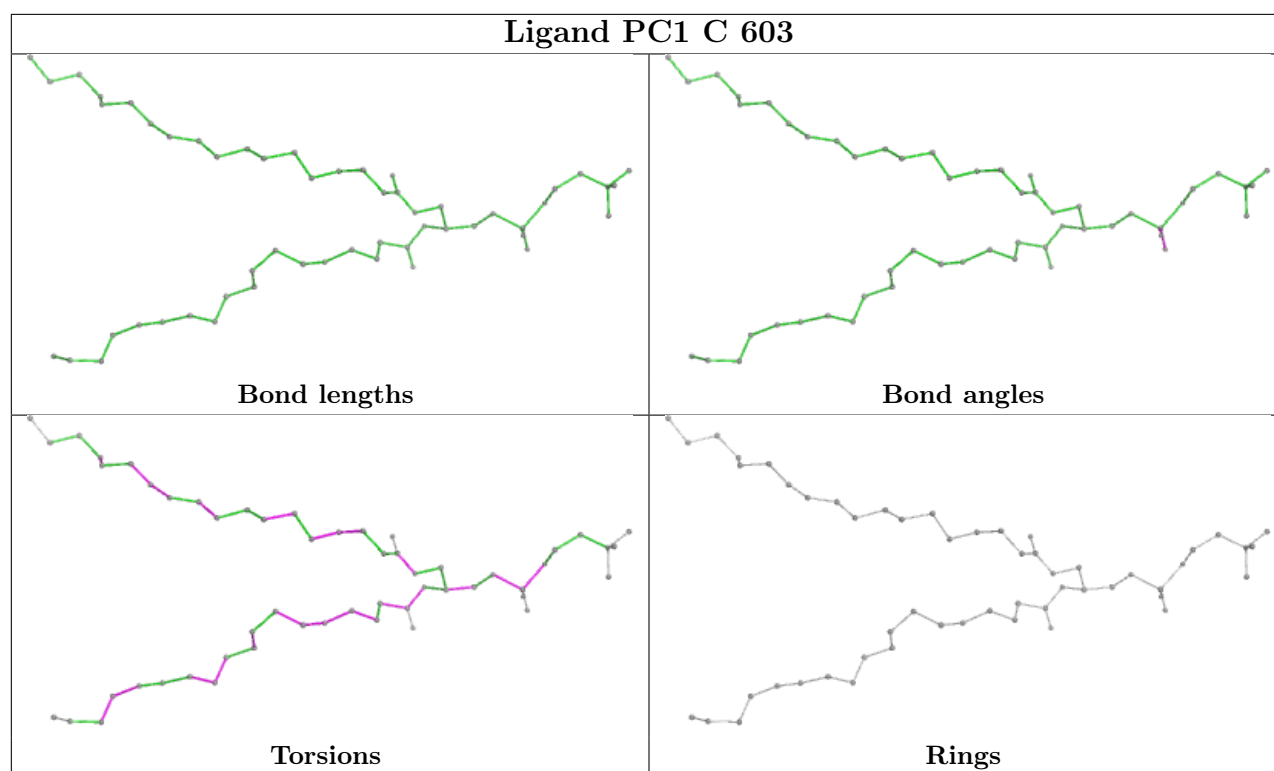
Bond angles



Torsions



Rings



#### 4.7 Other polymers [i](#)

There are no such residues in this entry.

#### 4.8 Polymer linkage issues [i](#)

There are no chain breaks in this entry.

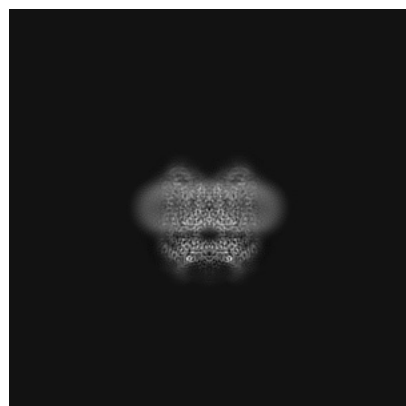
## 5 Map visualisation [i](#)

This section contains visualisations of the EMDB entry EMD-52211. These allow visual inspection of the internal detail of the map and identification of artifacts.

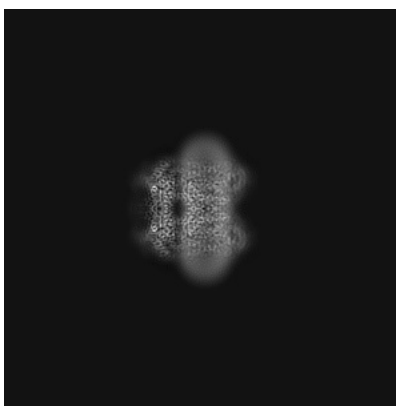
Images derived from a raw map, generated by summing the deposited half-maps, are presented below the corresponding image components of the primary map to allow further visual inspection and comparison with those of the primary map.

### 5.1 Orthogonal projections [i](#)

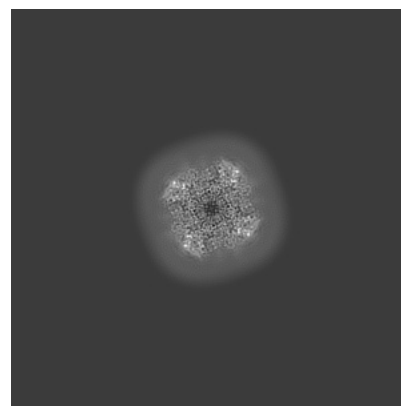
#### 5.1.1 Primary map



X

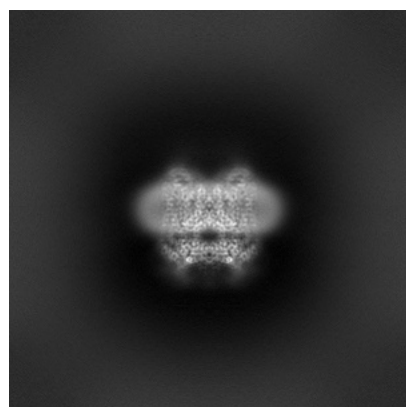


Y

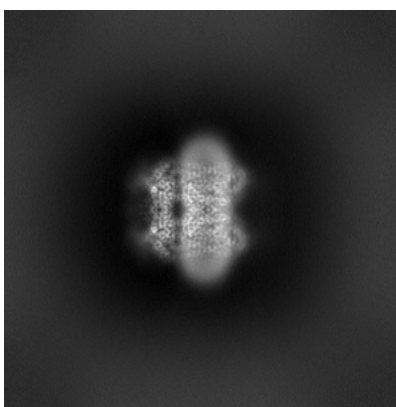


Z

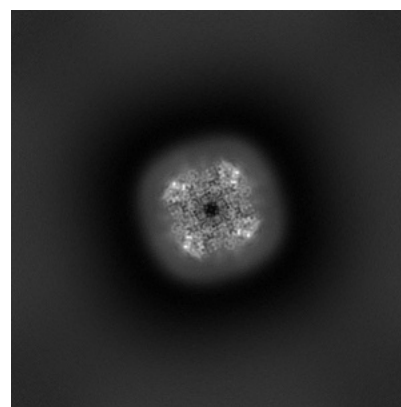
#### 5.1.2 Raw map



X



Y

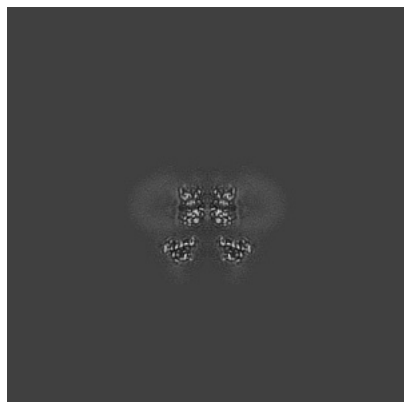


Z

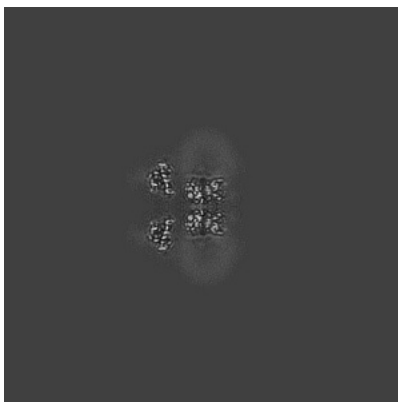
The images above show the map projected in three orthogonal directions.

## 5.2 Central slices [i](#)

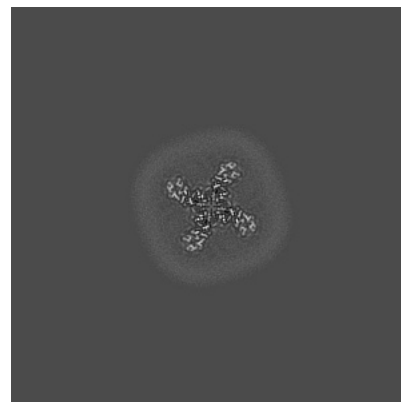
### 5.2.1 Primary map



X Index: 295

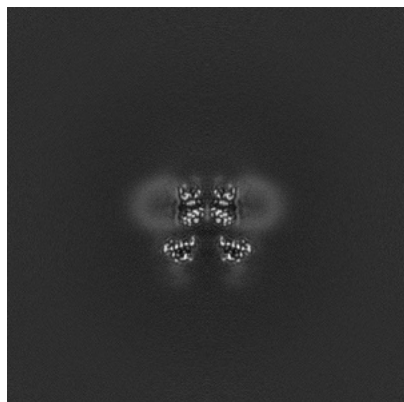


Y Index: 295

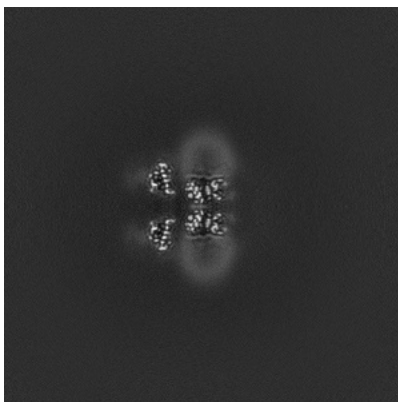


Z Index: 295

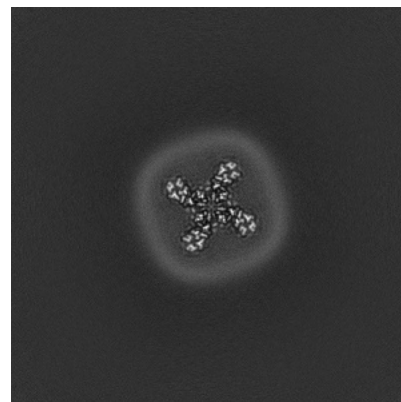
### 5.2.2 Raw map



X Index: 295



Y Index: 295

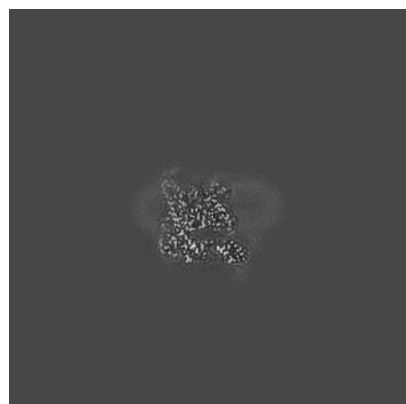


Z Index: 295

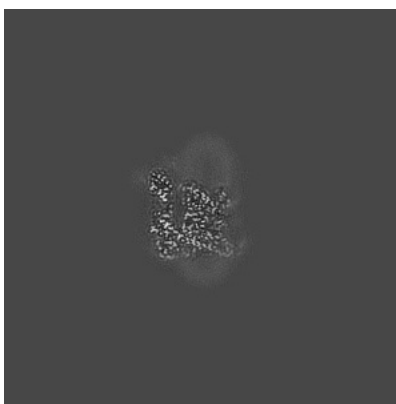
The images above show central slices of the map in three orthogonal directions.

## 5.3 Largest variance slices [i](#)

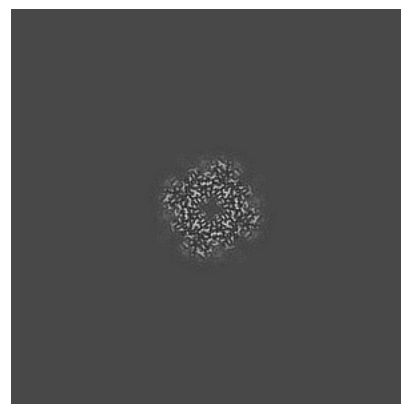
### 5.3.1 Primary map



X Index: 277

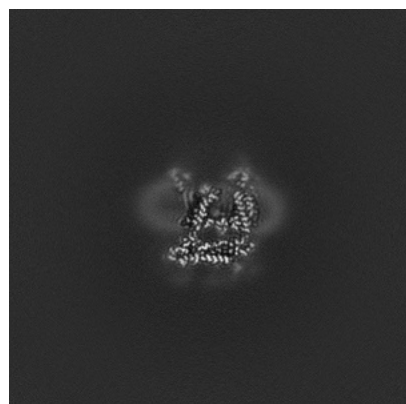


Y Index: 313

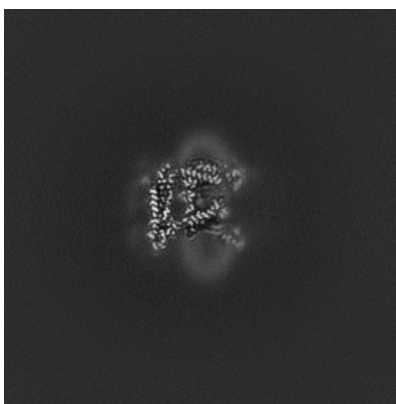


Z Index: 237

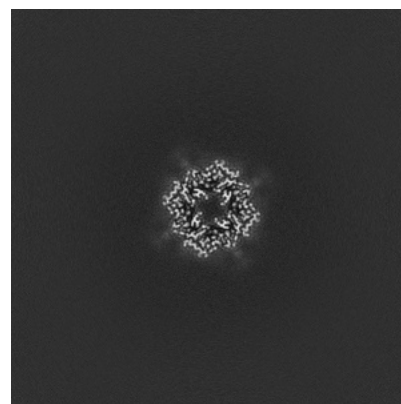
### 5.3.2 Raw map



X Index: 327



Y Index: 263



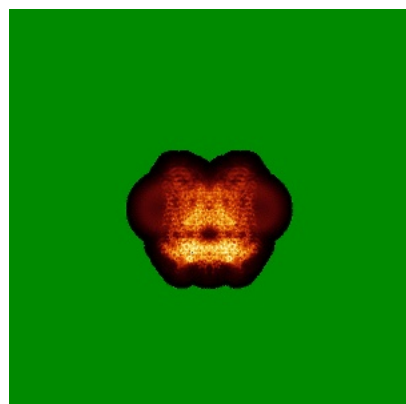
Z Index: 230

The images above show the largest variance slices of the map in three orthogonal directions.

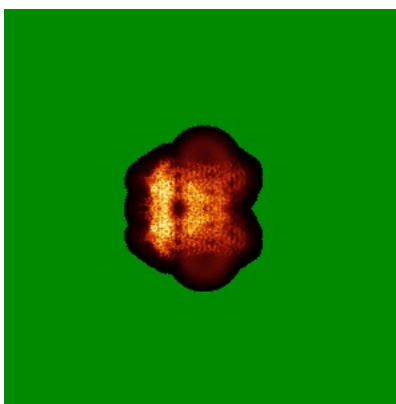


## 5.4 Orthogonal standard-deviation projections (False-color) ⓘ

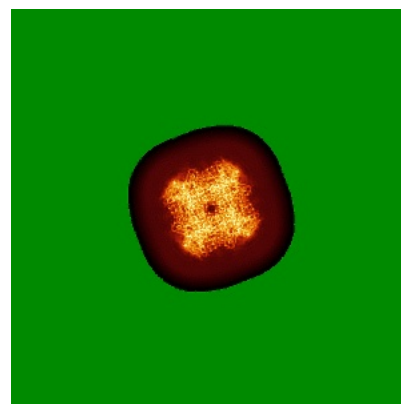
### 5.4.1 Primary map



X

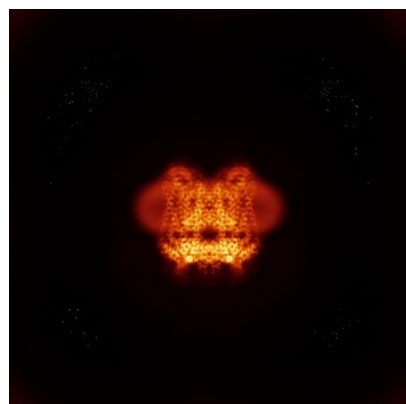


Y

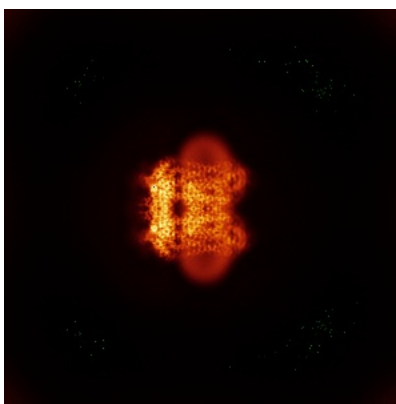


Z

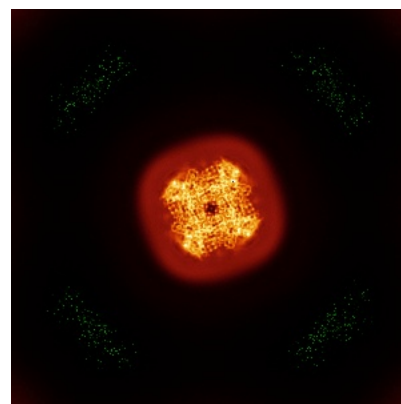
### 5.4.2 Raw map



X



Y

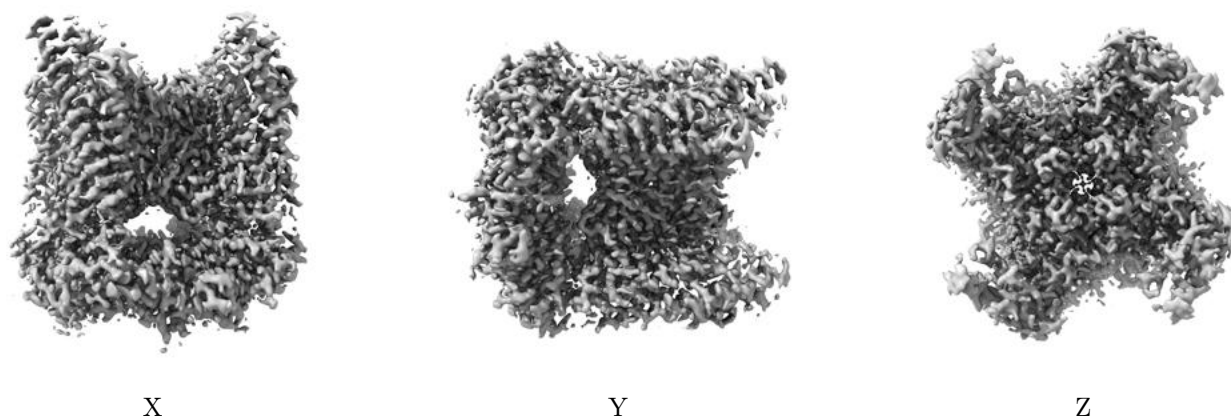


Z

The images above show the map standard deviation projections with false color in three orthogonal directions. Minimum values are shown in green, max in blue, and dark to light orange shades represent small to large values respectively.

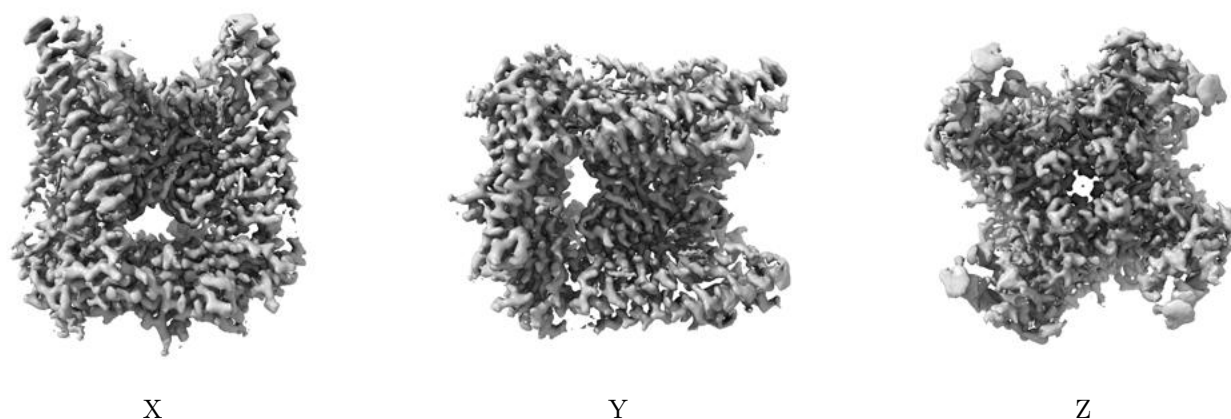
## 5.5 Orthogonal surface views [i](#)

### 5.5.1 Primary map



The images above show the 3D surface view of the map at the recommended contour level 0.422. These images, in conjunction with the slice images, may facilitate assessment of whether an appropriate contour level has been provided.

### 5.5.2 Raw map



These images show the 3D surface of the raw map. The raw map's contour level was selected so that its surface encloses the same volume as the primary map does at its recommended contour level.

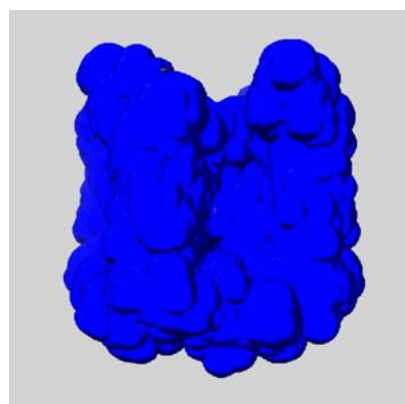
## 5.6 Mask visualisation [i](#)

This section shows the 3D surface view of the primary map at 50% transparency overlaid with the specified mask at 0% transparency

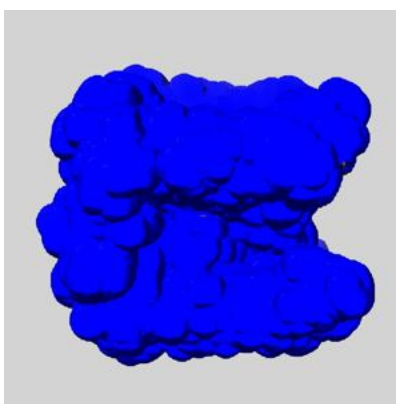
A mask typically either:

- Encompasses the whole structure
- Separates out a domain, a functional unit, a monomer or an area of interest from a larger structure

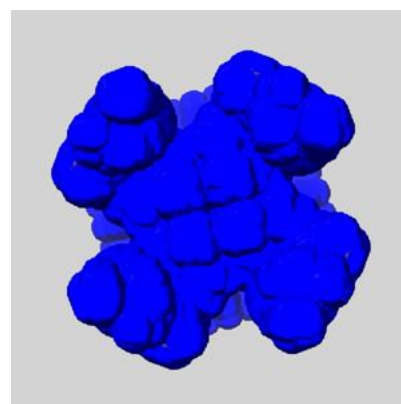
### 5.6.1 emd\_52211\_msk\_1.map [i](#)



X



Y

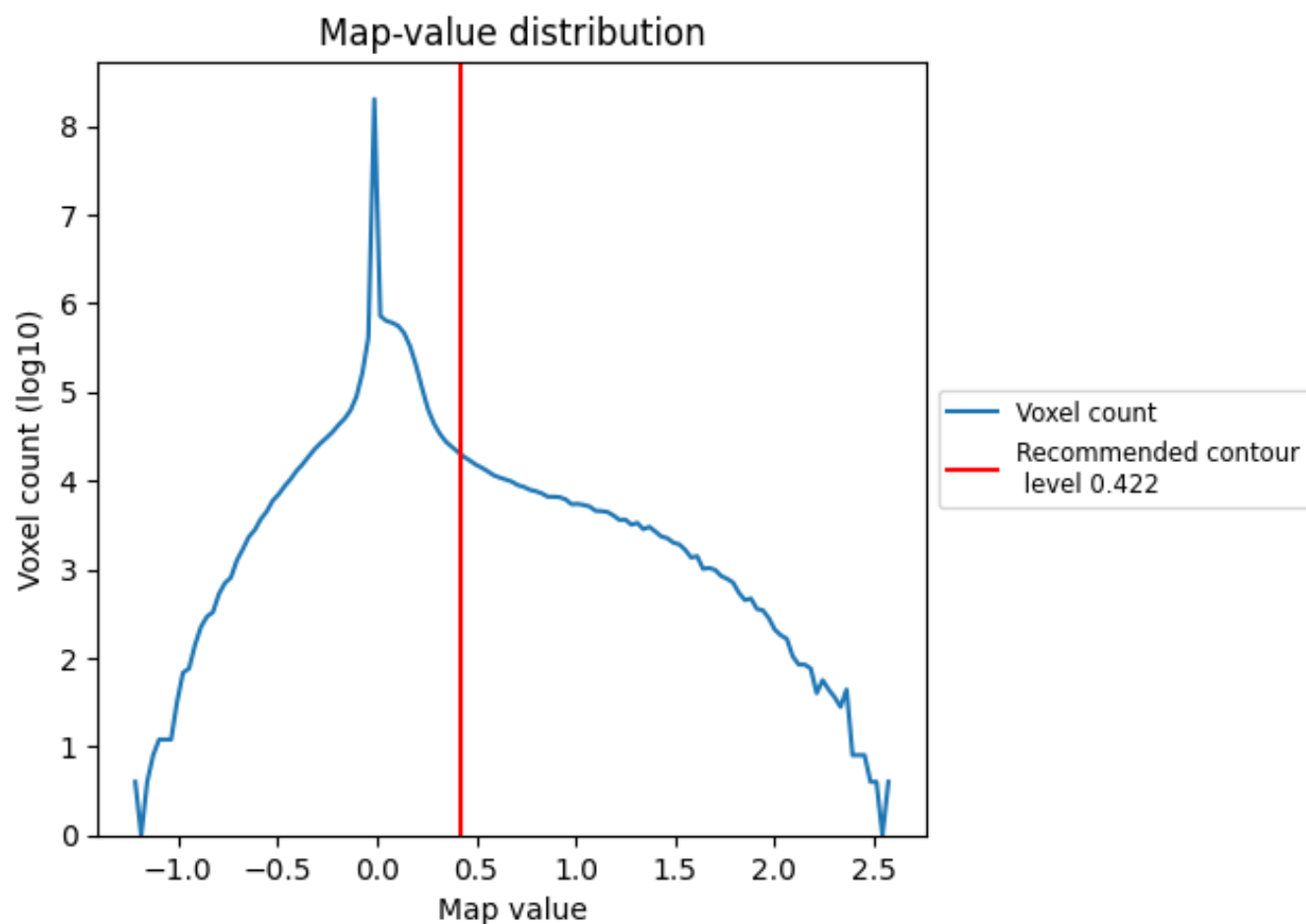


Z

## 6 Map analysis [i](#)

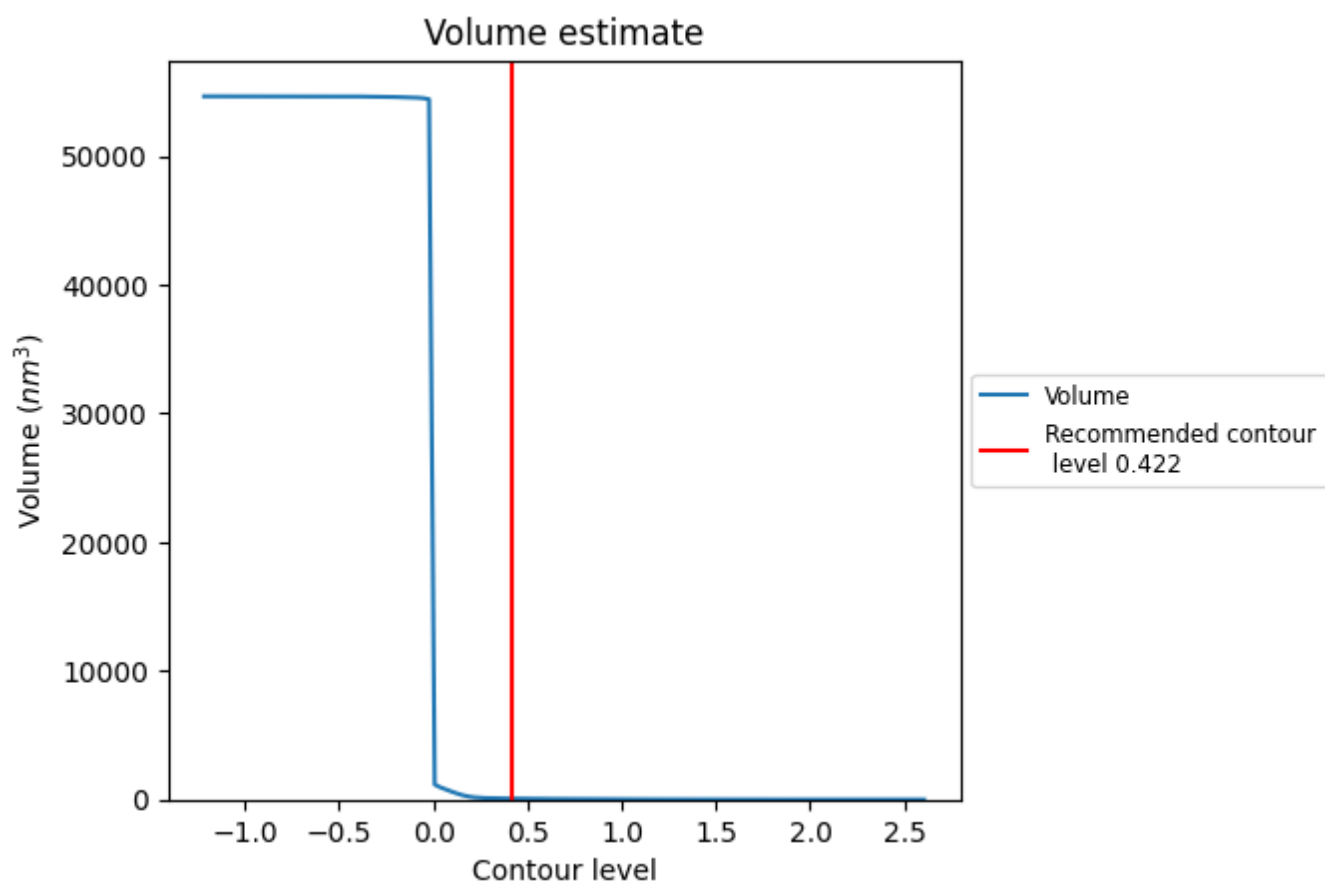
This section contains the results of statistical analysis of the map.

### 6.1 Map-value distribution [i](#)



The map-value distribution is plotted in 128 intervals along the x-axis. The y-axis is logarithmic. A spike in this graph at zero usually indicates that the volume has been masked.

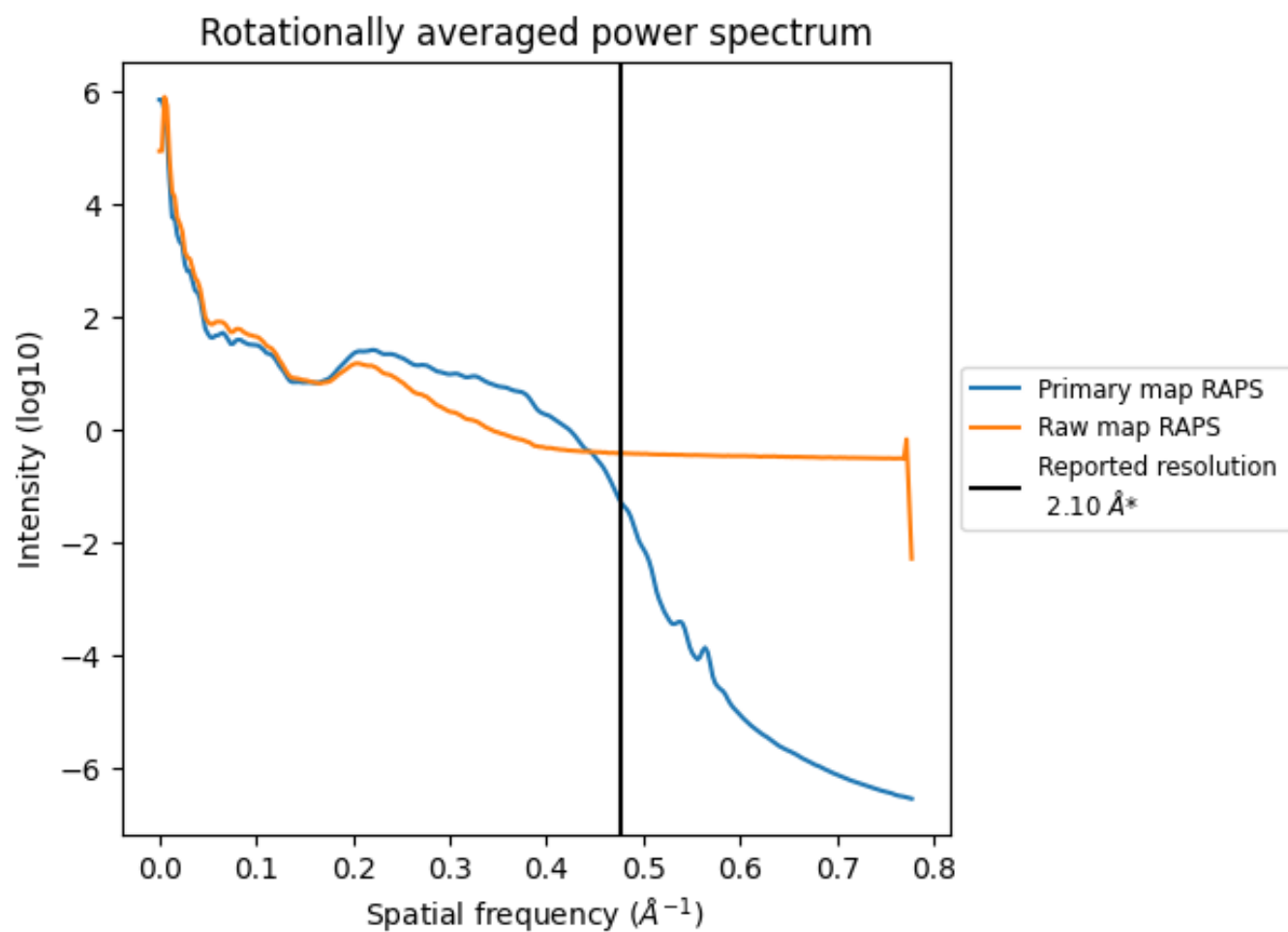
## 6.2 Volume estimate [i](#)



The volume at the recommended contour level is 74  $\text{nm}^3$ ; this corresponds to an approximate mass of 67 kDa.

The volume estimate graph shows how the enclosed volume varies with the contour level. The recommended contour level is shown as a vertical line and the intersection between the line and the curve gives the volume of the enclosed surface at the given level.

### 6.3 Rotationally averaged power spectrum ⓘ

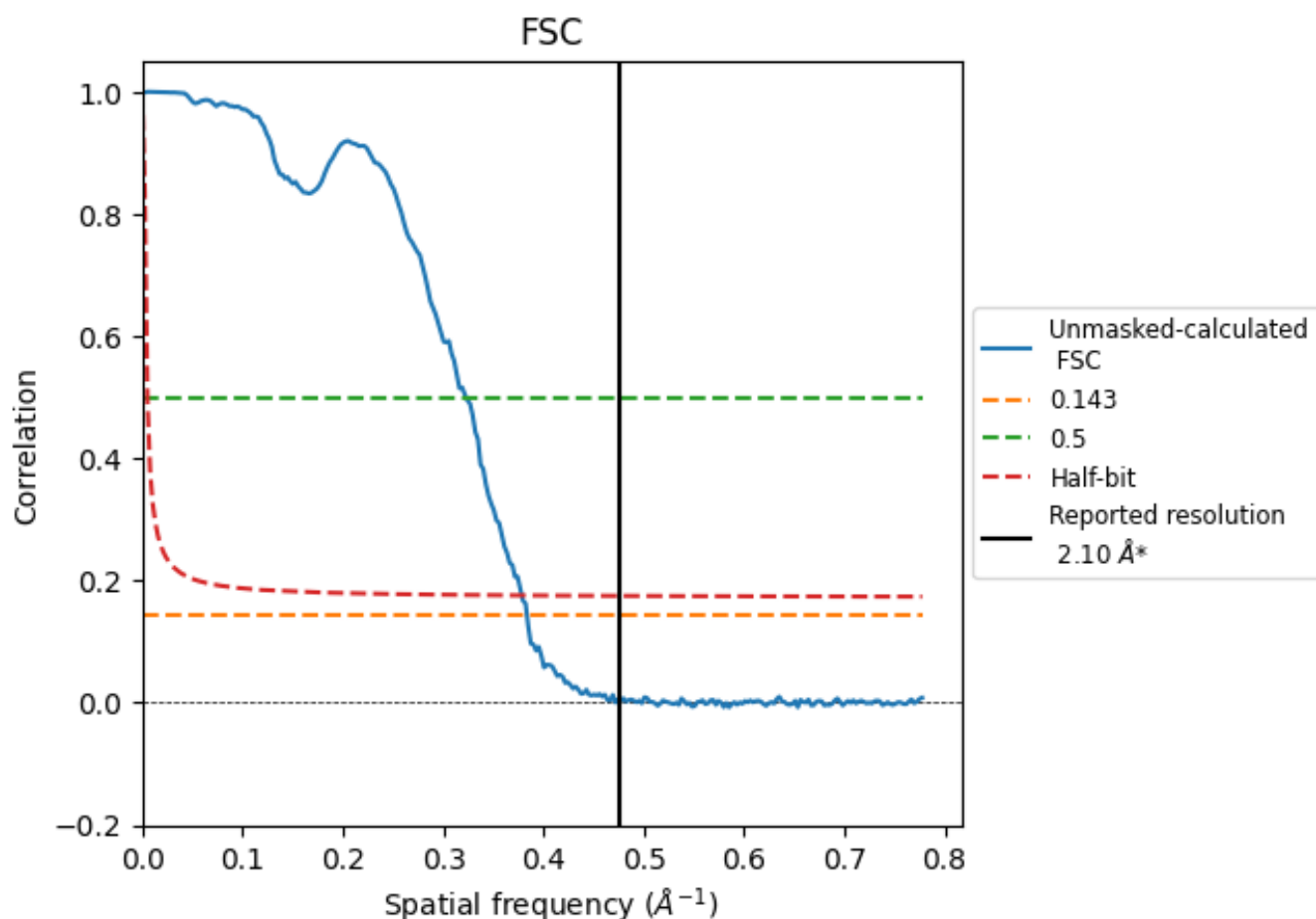


\*Reported resolution corresponds to spatial frequency of 0.476 Å<sup>-1</sup>

## 7 Fourier-Shell correlation [i](#)

Fourier-Shell Correlation (FSC) is the most commonly used method to estimate the resolution of single-particle and subtomogram-averaged maps. The shape of the curve depends on the imposed symmetry, mask and whether or not the two 3D reconstructions used were processed from a common reference. The reported resolution is shown as a black line. A curve is displayed for the half-bit criterion in addition to lines showing the 0.143 gold standard cut-off and 0.5 cut-off.

### 7.1 FSC [i](#)



\*Reported resolution corresponds to spatial frequency of 0.476  $\text{\AA}^{-1}$

## 7.2 Resolution estimates [i](#)

Resolution estimate (Å)	Estimation criterion (FSC cut-off)		
	0.143	0.5	Half-bit
Reported by author	2.10	-	-
Author-provided FSC curve	-	-	-
Unmasked-calculated*	2.61	3.10	2.64

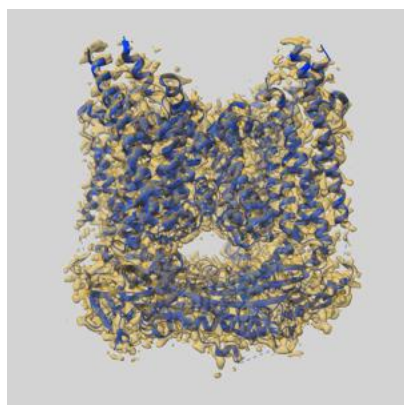
\*Resolution estimate based on FSC curve calculated by comparison of deposited half-maps. The value from deposited half-maps intersecting FSC 0.143 CUT-OFF 2.61 differs from the reported value 2.1 by more than 10 %



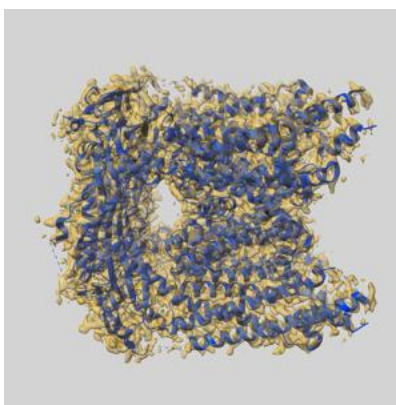
## 8 Map-model fit [i](#)

This section contains information regarding the fit between EMDB map EMD-52211 and PDB model 9HJ8. Per-residue inclusion information can be found in section ?? on page ??.

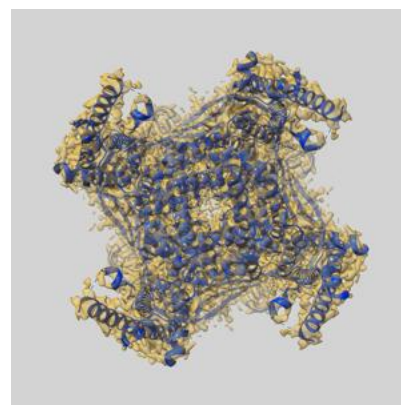
### 8.1 Map-model overlay [i](#)



X



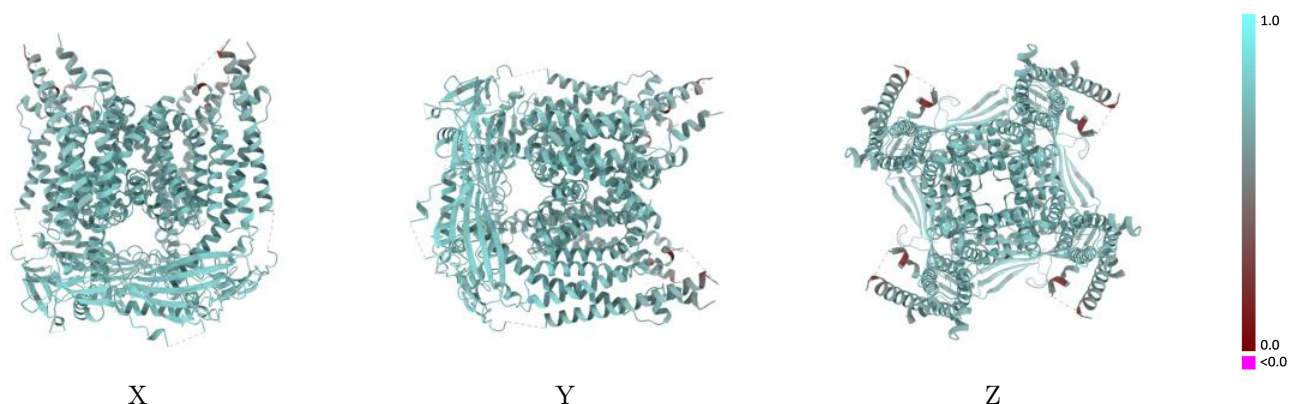
Y



Z

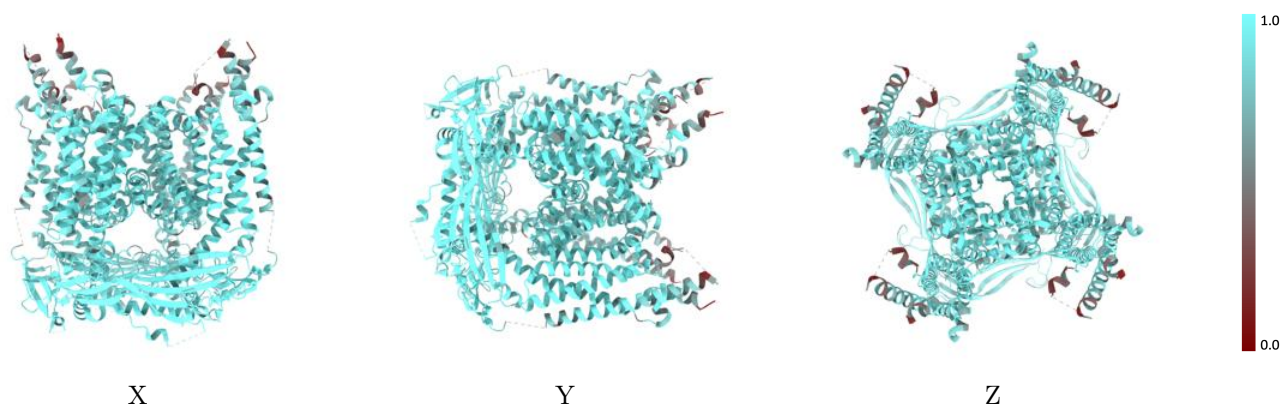
The images above show the 3D surface view of the map at the recommended contour level 0.422 at 50% transparency in yellow overlaid with a ribbon representation of the model coloured in blue. These images allow for the visual assessment of the quality of fit between the atomic model and the map.

## 8.2 Q-score mapped to coordinate model [i](#)



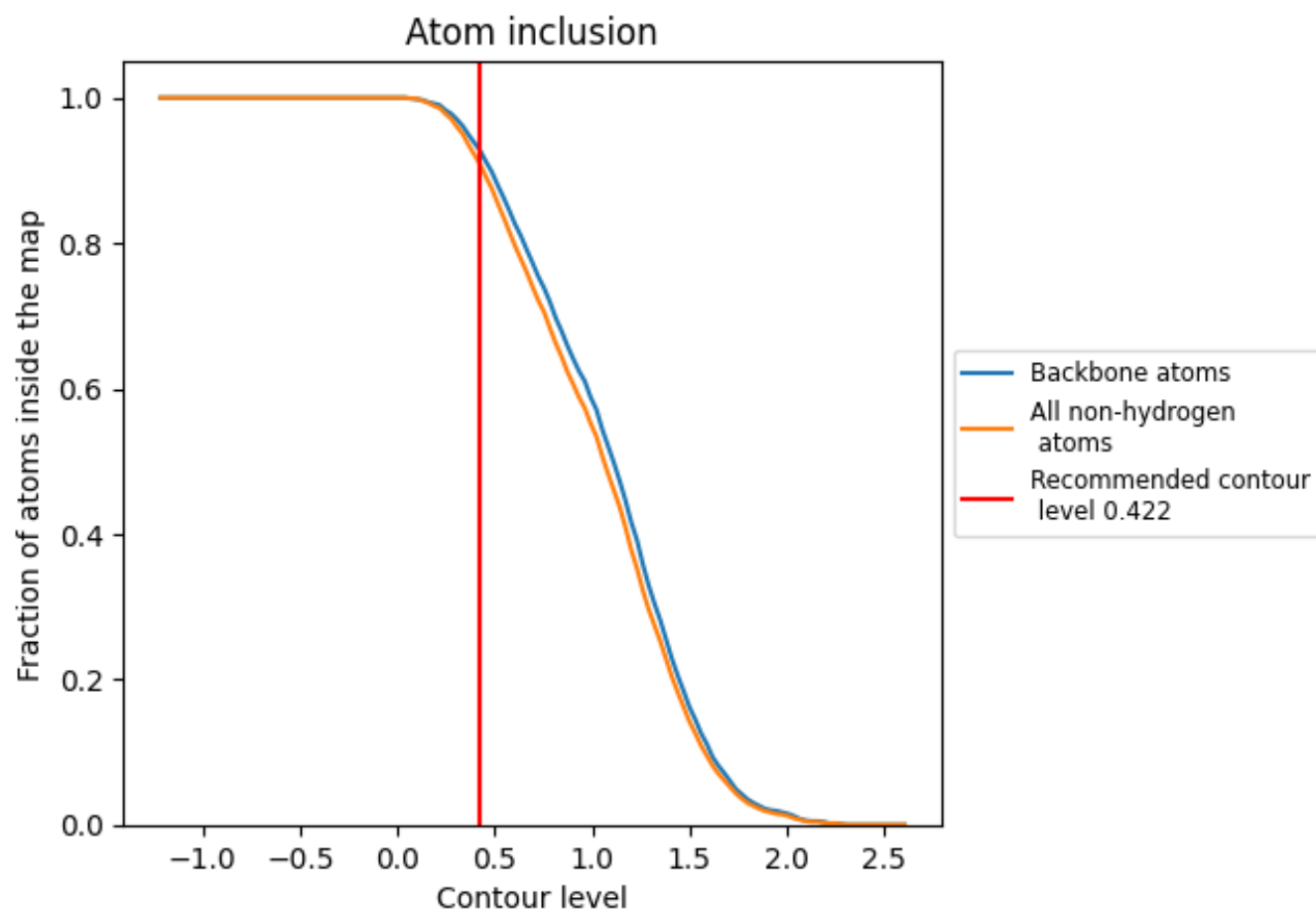
The images above show the model with each residue coloured according to its Q-score. This shows their resolvability in the map with higher Q-score values reflecting better resolvability. Please note: Q-score is calculating the resolvability of atoms, and thus high values are only expected at resolutions at which atoms can be resolved. Low Q-score values may therefore be expected for many entries.

## 8.3 Atom inclusion mapped to coordinate model [i](#)



The images above show the model with each residue coloured according to its atom inclusion. This shows to what extent they are inside the map at the recommended contour level (0.422).

## 8.4 Atom inclusion [i](#)



At the recommended contour level, 93% of all backbone atoms, 91% of all non-hydrogen atoms, are inside the map.

8.5 Map-model fit summary ⓘ

The table lists the average atom inclusion at the recommended contour level (0.422) and Q-score for the entire model and for each chain.

Chain	Atom inclusion	Q-score
All	<div><div></div>0.9090</div>	<div><div></div>0.7030</div>
A	<div><div></div>0.9130</div>	<div><div></div>0.7030</div>
B	<div><div></div>0.9120</div>	<div><div></div>0.7020</div>
C	<div><div></div>0.9120</div>	<div><div></div>0.7040</div>
D	<div><div></div>0.9120</div>	<div><div></div>0.7030</div>
E	<div><div></div>0.9290</div>	<div><div></div>0.6780</div>
F	<div><div></div>0.9290</div>	<div><div></div>0.6800</div>
G	<div><div></div>0.9290</div>	<div><div></div>0.6800</div>
H	<div><div></div>0.9290</div>	<div><div></div>0.6810</div>

1.0

0.0

<0.0