



# Full wwPDB X-ray Structure Validation Report ⓘ

Aug 18, 2025 – 04:11 pm BST

PDB ID : 9HJ7 / pdb\_00009hj7  
Title : Structure of Chitinase 35 from Metschnikowia pulcherrima (MpChit35)  
Authors : Fernandez-Garcia, A.; Sanz-Aparicio, J.  
Deposited on : 2024-11-28  
Resolution : 2.55 Å(reported)

This is a Full wwPDB X-ray Structure Validation Report for a publicly released PDB entry.

We welcome your comments at [validation@mail.wwpdb.org](mailto:validation@mail.wwpdb.org)

A user guide is available at

<https://www.wwpdb.org/validation/2017/XrayValidationReportHelp>

with specific help available everywhere you see the ⓘ symbol.

The types of validation reports are described at

<http://www.wwpdb.org/validation/2017/FAQs#types>.

---

The following versions of software and data (see [references ⓘ](#)) were used in the production of this report:

MolProbity	:	4-5-2 with Phenix2.0rc1
Mogul	:	1.8.4, CSD as541be (2020)
Xtriage (Phenix)	:	2.0rc1
EDS	:	3.0
Percentile statistics	:	20231227.v01 (using entries in the PDB archive December 27th 2023)
CCP4	:	9.0.006 (Gargrove)
Density-Fitness	:	1.0.12
Ideal geometry (proteins)	:	Engh & Huber (2001)
Ideal geometry (DNA, RNA)	:	Parkinson et al. (1996)
Validation Pipeline (wwPDB-VP)	:	2.45.1

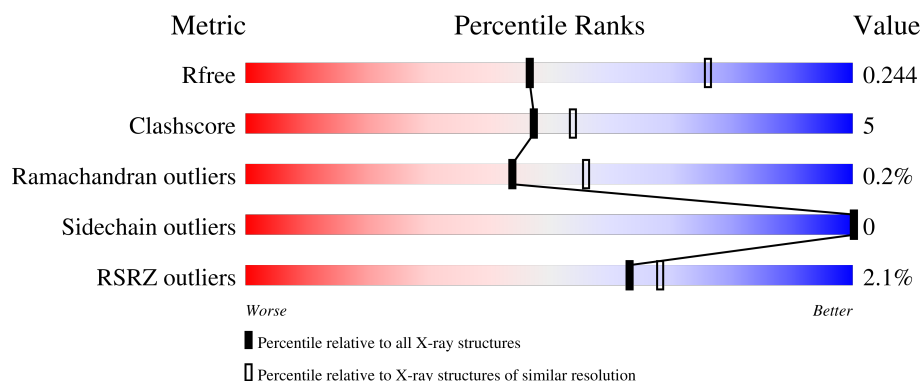
# 1 Overall quality at a glance

The following experimental techniques were used to determine the structure:

*X-RAY DIFFRACTION*

The reported resolution of this entry is 2.55 Å.

Percentile scores (ranging between 0-100) for global validation metrics of the entry are shown in the following graphic. The table shows the number of entries on which the scores are based.



Metric	Whole archive (#Entries)	Similar resolution (#Entries, resolution range(Å))
$R_{free}$	164625	1004 (2.54-2.54)
Clashscore	180529	1055 (2.54-2.54)
Ramachandran outliers	177936	1048 (2.54-2.54)
Sidechain outliers	177891	1048 (2.54-2.54)
RSRZ outliers	164620	1004 (2.54-2.54)

The table below summarises the geometric issues observed across the polymeric chains and their fit to the electron density. The red, orange, yellow and green segments of the lower bar indicate the fraction of residues that contain outliers for  $\geq 3$ , 2, 1 and 0 types of geometric quality criteria respectively. A grey segment represents the fraction of residues that are not modelled. The numeric value for each fraction is indicated below the corresponding segment, with a dot representing fractions  $\leq 5\%$ . The upper red bar (where present) indicates the fraction of residues that have poor fit to the electron density. The numeric value is given above the bar.

Mol	Chain	Length	Quality of chain
1	A	291	 2% 90% 9%
1	B	291	 2% 88% 11%

The following table lists non-polymeric compounds, carbohydrate monomers and non-standard residues in protein, DNA, RNA chains that are outliers for geometric or electron-density-fit criteria:

Mol	Type	Chain	Res	Chirality	Geometry	Clashes	Electron density
3	GOL	A	402	-	-	X	-

## 2 Entry composition [i](#)

There are 6 unique types of molecules in this entry. The entry contains 4767 atoms, of which 0 are hydrogens and 0 are deuteriums.

In the tables below, the ZeroOcc column contains the number of atoms modelled with zero occupancy, the AltConf column contains the number of residues with at least one atom in alternate conformation and the Trace column contains the number of residues modelled with at most 2 atoms.

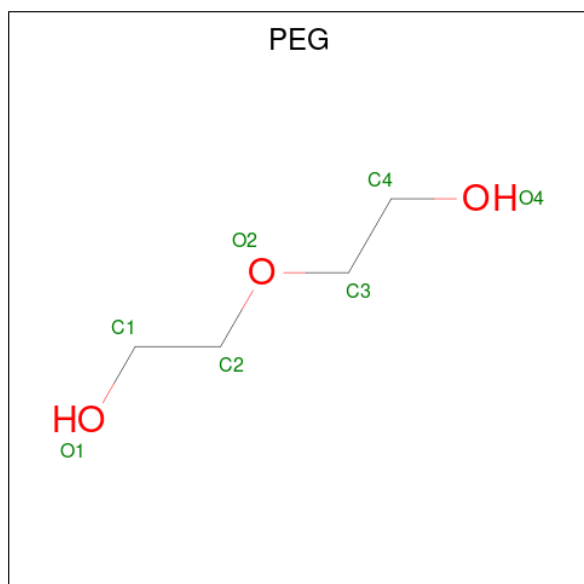
- Molecule 1 is a protein called Chitinase.

Mol	Chain	Residues	Atoms					ZeroOcc	AltConf	Trace
1	A	291	Total	C	N	O	S	0	4	0
			2275	1442	380	439	14			
1	B	291	Total	C	N	O	S	0	2	0
			2266	1435	380	437	14			

There are 4 discrepancies between the modelled and reference sequences:

Chain	Residue	Modelled	Actual	Comment	Reference
A	110	THR	SER	conflict	UNP A0A4P6XUI5
A	310	VAL	MET	conflict	UNP A0A4P6XUI5
B	110	THR	SER	conflict	UNP A0A4P6XUI5
B	310	VAL	MET	conflict	UNP A0A4P6XUI5

- Molecule 2 is DI(HYDROXYETHYL)ETHER (CCD ID: PEG) (formula: C<sub>4</sub>H<sub>10</sub>O<sub>3</sub>).



Mol	Chain	Residues	Atoms			ZeroOcc	AltConf
2	A	1	Total	C	O	0	0
			7	4	3		
2	B	1	Total	C	O	0	0
			7	4	3		
2	B	1	Total	C	O	0	0
			7	4	3		
2	B	1	Total	C	O	0	0
			7	4	3		

- Molecule 3 is GLYCEROL (CCD ID: GOL) (formula:  $C_3H_8O_3$ ).



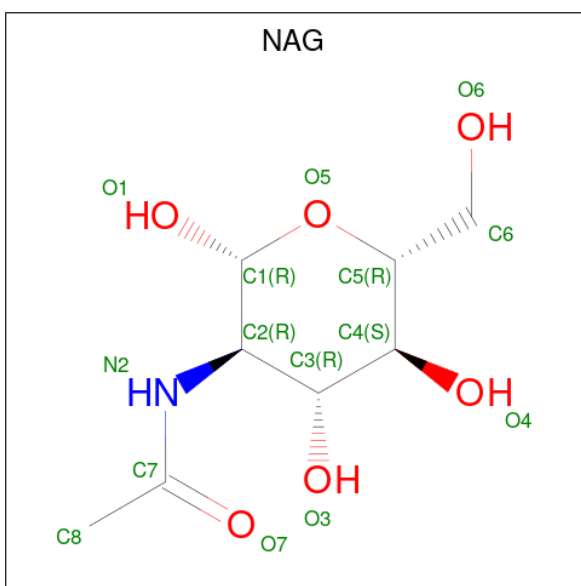
Mol	Chain	Residues	Atoms			ZeroOcc	AltConf
3	A	1	Total	C	O	0	0
			6	3	3		
3	A	1	Total	C	O	0	0
			6	3	3		
3	A	1	Total	C	O	0	0
			6	3	3		

- Molecule 4 is SULFATE ION (CCD ID: SO4) (formula:  $O_4S$ ).



Mol	Chain	Residues	Atoms			ZeroOcc	AltConf
4	A	1	Total	O	S	0	0
			5	4	1		
4	B	1	Total	O	S	0	0
			5	4	1		
4	B	1	Total	O	S	0	0
			5	4	1		

- Molecule 5 is 2-acetamido-2-deoxy-beta-D-glucopyranose (CCD ID: NAG) (formula:  $C_8H_{15}NO_6$ ).



Mol	Chain	Residues	Atoms				ZeroOcc	AltConf
5	B	1	Total	C	N	O	0	0
			14	8	1	5		

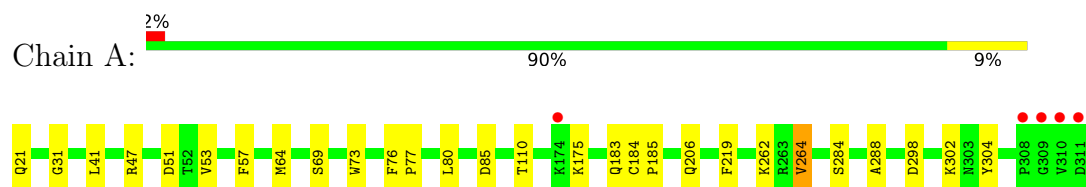
- Molecule 6 is water.

Mol	Chain	Residues	Atoms		ZeroOcc	AltConf
6	A	78	Total	O	0	0
			78	78		
6	B	73	Total	O	0	0
			73	73		

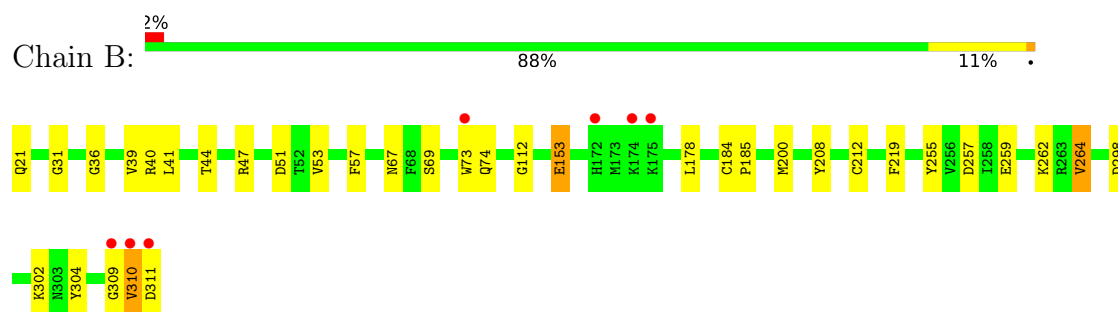
### 3 Residue-property plots [i](#)

These plots are drawn for all protein, RNA, DNA and oligosaccharide chains in the entry. The first graphic for a chain summarises the proportions of the various outlier classes displayed in the second graphic. The second graphic shows the sequence view annotated by issues in geometry and electron density. Residues are color-coded according to the number of geometric quality criteria for which they contain at least one outlier: green = 0, yellow = 1, orange = 2 and red = 3 or more. A red dot above a residue indicates a poor fit to the electron density ( $RSRZ > 2$ ). Stretches of 2 or more consecutive residues without any outlier are shown as a green connector. Residues present in the sample, but not in the model, are shown in grey.

#### • Molecule 1: Chitinase



#### • Molecule 1: Chitinase





## 4 Data and refinement statistics

Property	Value	Source
Space group	P 1 21 1	Depositor
Cell constants a, b, c, $\alpha$ , $\beta$ , $\gamma$	60.58Å 54.85Å 97.78Å 90.00° 107.72° 90.00°	Depositor
Resolution (Å)	47.31 – 2.55 47.31 – 2.55	Depositor EDS
% Data completeness (in resolution range)	98.8 (47.31-2.55) 99.1 (47.31-2.55)	Depositor EDS
$R_{merge}$	0.18	Depositor
$R_{sym}$	(Not available)	Depositor
$\langle I/\sigma(I) \rangle$ <sup>1</sup>	4.31 (at 2.54Å)	Xtriage
Refinement program	REFMAC 5.8.0419	Depositor
R, $R_{free}$	0.181 , 0.238 0.188 , 0.244	Depositor DCC
$R_{free}$ test set	982 reflections (4.83%)	wwPDB-VP
Wilson B-factor (Å <sup>2</sup> )	26.6	Xtriage
Anisotropy	0.262	Xtriage
Bulk solvent $k_{sol}$ (e/Å <sup>3</sup> ), $B_{sol}$ (Å <sup>2</sup> )	0.36 , 35.1	EDS
L-test for twinning <sup>2</sup>	$\langle  L  \rangle = 0.50$ , $\langle L^2 \rangle = 0.33$	Xtriage
Estimated twinning fraction	0.017 for h,-k,-h-l	Xtriage
$F_o, F_c$ correlation	0.94	EDS
Total number of atoms	4767	wwPDB-VP
Average B, all atoms (Å <sup>2</sup> )	25.0	wwPDB-VP

Xtriage's analysis on translational NCS is as follows: *The largest off-origin peak in the Patterson function is 5.15% of the height of the origin peak. No significant pseudotranslation is detected.*

<sup>1</sup>Intensities estimated from amplitudes.

<sup>2</sup>Theoretical values of  $\langle |L| \rangle$ ,  $\langle L^2 \rangle$  for acentric reflections are 0.5, 0.333 respectively for untwinned datasets, and 0.375, 0.2 for perfectly twinned datasets.

## 5 Model quality

### 5.1 Standard geometry

Bond lengths and bond angles in the following residue types are not validated in this section: PEG, SO4, NAG, GOL

The Z score for a bond length (or angle) is the number of standard deviations the observed value is removed from the expected value. A bond length (or angle) with  $|Z| > 5$  is considered an outlier worth inspection. RMSZ is the root-mean-square of all Z scores of the bond lengths (or angles).

Mol	Chain	Bond lengths		Bond angles	
		RMSZ	# Z  >5	RMSZ	# Z  >5
1	A	0.56	0/2346	0.99	5/3184 (0.2%)
1	B	0.54	0/2331	0.98	5/3163 (0.2%)
All	All	0.55	0/4677	0.98	10/6347 (0.2%)

Chiral center outliers are detected by calculating the chiral volume of a chiral center and verifying if the center is modelled as a planar moiety or with the opposite hand. A planarity outlier is detected by checking planarity of atoms in a peptide group, atoms in a mainchain group or atoms of a sidechain that are expected to be planar.

Mol	Chain	#Chirality outliers	#Planarity outliers
1	A	0	1

There are no bond length outliers.

All (10) bond angle outliers are listed below:

Mol	Chain	Res	Type	Atoms	Z	Observed(°)	Ideal(°)
1	B	264	VAL	N-CA-CB	-6.47	104.63	112.33
1	B	44	THR	CA-CB-OG1	-5.90	100.75	109.60
1	A	110	THR	CA-CB-OG1	-5.75	100.98	109.60
1	A	175	LYS	CB-CA-C	5.46	119.53	110.74
1	A	264	VAL	N-CA-CB	-5.42	105.89	112.33
1	B	153	GLU	CB-CG-CD	5.24	121.51	112.60
1	B	57	PHE	CB-CA-C	-5.22	100.17	110.10
1	B	255	TYR	N-CA-CB	5.15	117.58	109.69
1	A	85	ASP	CA-CB-CG	5.07	117.67	112.60
1	A	175	LYS	N-CA-CB	-5.04	102.68	110.65

There are no chirality outliers.

All (1) planarity outliers are listed below:

Mol	Chain	Res	Type	Group
1	A	57	PHE	Peptide

## 5.2 Too-close contacts ⓘ

In the following table, the Non-H and H(model) columns list the number of non-hydrogen atoms and hydrogen atoms in the chain respectively. The H(added) column lists the number of hydrogen atoms added and optimized by MolProbity. The Clashes column lists the number of clashes within the asymmetric unit, whereas Symm-Clashes lists symmetry-related clashes.

Mol	Chain	Non-H	H(model)	H(added)	Clashes	Symm-Clashes
1	A	2275	0	2157	20	0
1	B	2266	0	2146	25	0
2	A	7	0	10	2	0
2	B	21	0	30	5	0
3	A	18	0	24	6	0
4	A	5	0	0	0	0
4	B	10	0	0	0	0
5	B	14	0	13	2	0
6	A	78	0	0	1	0
6	B	73	0	0	3	0
All	All	4767	0	4380	46	0

The all-atom clashscore is defined as the number of clashes found per 1000 atoms (including hydrogen atoms). The all-atom clashscore for this structure is 5.

All (46) close contacts within the same asymmetric unit are listed below, sorted by their clash magnitude.

Atom-1	Atom-2	Interatomic distance (Å)	Clash overlap (Å)
1:B:67:ASN:HD21	5:B:401:NAG:C1	1.11	1.57
1:B:67:ASN:ND2	5:B:401:NAG:C1	1.97	1.24
1:B:40:ARG:HG3	6:B:555:HOH:O	1.91	0.70
1:A:284:SER:HA	2:A:401:PEG:H12	1.74	0.68
1:B:208:TYR:OH	2:B:402:PEG:H22	1.98	0.63
1:A:64:MET:HE3	3:A:402:GOL:H2	1.79	0.63
1:A:31:GLY:O	1:A:69:SER:HB3	2.00	0.61
1:B:310:VAL:O	1:B:311:ASP:C	2.44	0.60
1:B:36:GLY:HA3	2:B:406:PEG:H11	1.84	0.58
1:A:41:LEU:HD11	1:A:53[A]:VAL:HG11	1.84	0.57
1:B:219:PHE:CD2	1:B:264:VAL:CG1	2.87	0.57
1:B:31:GLY:O	1:B:69:SER:HB3	2.05	0.57
1:B:41:LEU:HD11	1:B:53:VAL:HG11	1.86	0.56

*Continued on next page...*

*Continued from previous page...*

Atom-1	Atom-2	Interatomic distance (Å)	Clash overlap (Å)
1:A:64:MET:H	3:A:402:GOL:H11	1.72	0.55
1:A:73:TRP:CD2	3:A:404:GOL:H11	2.43	0.54
1:B:309:GLY:O	1:B:310:VAL:C	2.51	0.54
1:B:112:GLY:HA2	6:B:562:HOH:O	2.07	0.53
1:B:262:LYS:HG2	1:B:304:TYR:CE1	2.45	0.52
1:A:41:LEU:CD1	1:A:53[A]:VAL:HG11	2.40	0.52
1:A:219:PHE:CD2	1:A:264:VAL:CG1	2.94	0.50
1:B:41:LEU:CD1	1:B:53:VAL:HG11	2.41	0.49
1:A:73:TRP:CE3	3:A:404:GOL:H11	2.48	0.49
1:B:184:CYS:CB	1:B:212:CYS:SG	3.01	0.48
2:B:402:PEG:H31	2:B:402:PEG:H11	1.70	0.48
1:B:73:TRP:CZ3	1:B:74:GLN:HG3	2.49	0.48
1:A:64:MET:CE	3:A:402:GOL:H2	2.44	0.47
1:A:184:CYS:N	1:A:185:PRO:CD	2.77	0.47
1:A:21:GLN:N	6:A:505:HOH:O	2.47	0.47
1:B:21:GLN:N	6:B:508:HOH:O	2.48	0.47
1:A:76:PHE:HB3	1:A:77:PRO:HD2	1.97	0.47
1:A:288:ALA:HB2	2:A:401:PEG:H42	1.97	0.47
1:B:39:VAL:HG22	2:B:405:PEG:H12	1.98	0.46
1:B:219:PHE:CD2	1:B:264:VAL:HG12	2.50	0.46
1:B:178:LEU:HD23	1:B:200:MET:HE1	1.98	0.46
1:B:184:CYS:N	1:B:185:PRO:CD	2.79	0.46
1:A:51:ASP:OD2	1:A:302:LYS:NZ	2.50	0.45
1:A:262:LYS:HG2	1:A:304:TYR:CE1	2.52	0.45
1:B:257:ASP:OD1	1:B:259[B]:GLU:HG2	2.16	0.45
1:B:153:GLU:OE1	2:B:402:PEG:H42	2.16	0.44
1:B:51:ASP:OD2	1:B:302:LYS:NZ	2.50	0.44
1:A:219:PHE:CD2	1:A:264:VAL:HG12	2.53	0.44
1:A:80:LEU:HD13	3:A:402:GOL:H32	2.01	0.42
1:A:183:GLN:HA	1:A:206:GLN:HB2	2.01	0.42
1:B:309:GLY:O	1:B:310:VAL:O	2.36	0.42
1:B:47:ARG:HH21	1:B:298:ASP:CG	2.28	0.42
1:A:47:ARG:HH21	1:A:298:ASP:CG	2.27	0.42

There are no symmetry-related clashes.

## 5.3 Torsion angles

### 5.3.1 Protein backbone

In the following table, the Percentiles column shows the percent Ramachandran outliers of the chain as a percentile score with respect to all X-ray entries followed by that with respect to entries of similar resolution.

The Analysed column shows the number of residues for which the backbone conformation was analysed, and the total number of residues.

Mol	Chain	Analysed	Favoured	Allowed	Outliers	Percentiles	
1	A	293/291 (101%)	282 (96%)	11 (4%)	0	100	100
1	B	291/291 (100%)	282 (97%)	8 (3%)	1 (0%)	37	46
All	All	584/582 (100%)	564 (97%)	19 (3%)	1 (0%)	44	56

All (1) Ramachandran outliers are listed below:

Mol	Chain	Res	Type
1	B	310	VAL

### 5.3.2 Protein sidechains

In the following table, the Percentiles column shows the percent sidechain outliers of the chain as a percentile score with respect to all X-ray entries followed by that with respect to entries of similar resolution.

The Analysed column shows the number of residues for which the sidechain conformation was analysed, and the total number of residues.

Mol	Chain	Analysed	Rotameric	Outliers	Percentiles	
1	A	244/240 (102%)	244 (100%)	0	100	100
1	B	242/240 (101%)	242 (100%)	0	100	100
All	All	486/480 (101%)	486 (100%)	0	100	100

There are no protein residues with a non-rotameric sidechain to report.

Sometimes sidechains can be flipped to improve hydrogen bonding and reduce clashes. All (6) such sidechains are listed below:

Mol	Chain	Res	Type
1	A	32	GLN
1	A	134	HIS
1	B	32	GLN

*Continued on next page...*

*Continued from previous page...*

Mol	Chain	Res	Type
1	B	67	ASN
1	B	134	HIS
1	B	293	HIS

### 5.3.3 RNA ⓘ

There are no RNA molecules in this entry.

## 5.4 Non-standard residues in protein, DNA, RNA chains ⓘ

There are no non-standard protein/DNA/RNA residues in this entry.

## 5.5 Carbohydrates ⓘ

There are no oligosaccharides in this entry.

## 5.6 Ligand geometry ⓘ

11 ligands are modelled in this entry.

In the following table, the Counts columns list the number of bonds (or angles) for which Mogul statistics could be retrieved, the number of bonds (or angles) that are observed in the model and the number of bonds (or angles) that are defined in the Chemical Component Dictionary. The Link column lists molecule types, if any, to which the group is linked. The Z score for a bond length (or angle) is the number of standard deviations the observed value is removed from the expected value. A bond length (or angle) with  $|Z| > 2$  is considered an outlier worth inspection. RMSZ is the root-mean-square of all Z scores of the bond lengths (or angles).

Mol	Type	Chain	Res	Link	Bond lengths			Bond angles		
					Counts	RMSZ	$\# Z  > 2$	Counts	RMSZ	$\# Z  > 2$
5	NAG	B	401	-	14,14,15	0.37	0	17,19,21	1.01	1 (5%)
3	GOL	A	402	-	5,5,5	0.15	0	5,5,5	0.40	0
4	SO4	B	403	-	4,4,4	0.34	0	6,6,6	0.08	0
2	PEG	B	406	-	6,6,6	0.30	0	5,5,5	0.12	0
4	SO4	B	404	-	4,4,4	0.32	0	6,6,6	0.09	0
3	GOL	A	403	-	5,5,5	0.14	0	5,5,5	0.43	0
2	PEG	B	405	-	6,6,6	0.34	0	5,5,5	0.42	0
4	SO4	A	405	-	4,4,4	0.34	0	6,6,6	0.13	0
3	GOL	A	404	-	5,5,5	0.17	0	5,5,5	0.40	0
2	PEG	B	402	-	6,6,6	0.23	0	5,5,5	0.45	0
2	PEG	A	401	-	6,6,6	0.30	0	5,5,5	0.25	0

In the following table, the Chirals column lists the number of chiral outliers, the number of chiral centers analysed, the number of these observed in the model and the number defined in the Chemical Component Dictionary. Similar counts are reported in the Torsion and Rings columns. '-' means no outliers of that kind were identified.

Mol	Type	Chain	Res	Link	Chirals	Torsions	Rings
5	NAG	B	401	-	-	0/6/23/26	0/1/1/1
3	GOL	A	402	-	-	2/4/4/4	-
2	PEG	B	406	-	-	3/4/4/4	-
3	GOL	A	403	-	-	0/4/4/4	-
2	PEG	B	405	-	-	2/4/4/4	-
3	GOL	A	404	-	-	4/4/4/4	-
2	PEG	B	402	-	-	3/4/4/4	-
2	PEG	A	401	-	-	2/4/4/4	-

There are no bond length outliers.

All (1) bond angle outliers are listed below:

Mol	Chain	Res	Type	Atoms	Z	Observed(°)	Ideal(°)
5	B	401	NAG	C1-O5-C5	-2.78	108.42	112.19

There are no chirality outliers.

All (16) torsion outliers are listed below:

Mol	Chain	Res	Type	Atoms
2	B	402	PEG	C1-C2-O2-C3
2	B	402	PEG	O2-C3-C4-O4
2	A	401	PEG	O1-C1-C2-O2
2	B	405	PEG	O2-C3-C4-O4
3	A	402	GOL	C1-C2-C3-O3
2	B	406	PEG	O1-C1-C2-O2
2	A	401	PEG	O2-C3-C4-O4
2	B	402	PEG	O1-C1-C2-O2
2	B	406	PEG	O2-C3-C4-O4
3	A	404	GOL	O1-C1-C2-O2
3	A	402	GOL	O2-C2-C3-O3
3	A	404	GOL	C1-C2-C3-O3
2	B	406	PEG	C4-C3-O2-C2
2	B	405	PEG	C4-C3-O2-C2
3	A	404	GOL	O2-C2-C3-O3
3	A	404	GOL	O1-C1-C2-C3

There are no ring outliers.

7 monomers are involved in 15 short contacts:

Mol	Chain	Res	Type	Clashes	Symm-Clashes
5	B	401	NAG	2	0
3	A	402	GOL	4	0
2	B	406	PEG	1	0
2	B	405	PEG	1	0
3	A	404	GOL	2	0
2	B	402	PEG	3	0
2	A	401	PEG	2	0

## 5.7 Other polymers [i](#)

There are no such residues in this entry.

## 5.8 Polymer linkage issues [i](#)

There are no chain breaks in this entry.



## 6 Fit of model and data [i](#)

### 6.1 Protein, DNA and RNA chains [i](#)

In the following table, the column labelled ‘#RSRZ> 2’ contains the number (and percentage) of RSRZ outliers, followed by percent RSRZ outliers for the chain as percentile scores relative to all X-ray entries and entries of similar resolution. The OWAB column contains the minimum, median, 95<sup>th</sup> percentile and maximum values of the occupancy-weighted average B-factor per residue. The column labelled ‘Q< 0.9’ lists the number of (and percentage) of residues with an average occupancy less than 0.9.

Mol	Chain	Analysed	<RSRZ>	#RSRZ>2	OWAB(Å <sup>2</sup> )	Q<0.9
1	A	291/291 (100%)	-0.27	5 (1%) 69 72	10, 20, 37, 102	4 (1%)
1	B	291/291 (100%)	-0.09	7 (2%) 59 64	13, 26, 47, 82	2 (0%)
All	All	582/582 (100%)	-0.18	12 (2%) 63 68	10, 23, 42, 102	6 (1%)

All (12) RSRZ outliers are listed below:

Mol	Chain	Res	Type	RSRZ
1	B	310	VAL	6.3
1	A	310	VAL	5.7
1	B	311	ASP	3.7
1	B	309	GLY	3.4
1	B	174	LYS	3.3
1	B	73	TRP	2.8
1	B	175	LYS	2.6
1	A	308	PRO	2.5
1	A	311	ASP	2.3
1	A	309	GLY	2.3
1	B	172	HIS	2.3
1	A	174	LYS	2.2

### 6.2 Non-standard residues in protein, DNA, RNA chains [i](#)

There are no non-standard protein/DNA/RNA residues in this entry.

### 6.3 Carbohydrates [i](#)

There are no oligosaccharides in this entry.

## 6.4 Ligands [i](#)

In the following table, the Atoms column lists the number of modelled atoms in the group and the number defined in the chemical component dictionary. The B-factors column lists the minimum, median, 95<sup>th</sup> percentile and maximum values of B factors of atoms in the group. The column labelled 'Q<0.9' lists the number of atoms with occupancy less than 0.9.

Mol	Type	Chain	Res	Atoms	RSCC	RSR	B-factors(Å <sup>2</sup> )	Q<0.9
2	PEG	B	405	7/7	0.81	0.21	35,44,49,50	0
3	GOL	A	402	6/6	0.81	0.20	55,60,60,68	0
3	GOL	A	404	6/6	0.83	0.16	50,51,51,53	0
5	NAG	B	401	14/15	0.83	0.15	42,57,69,69	0
4	SO4	A	405	5/5	0.84	0.27	87,87,93,95	0
3	GOL	A	403	6/6	0.85	0.14	31,34,41,42	0
2	PEG	B	406	7/7	0.86	0.15	42,54,57,57	0
4	SO4	B	403	5/5	0.86	0.25	73,75,81,89	0
4	SO4	B	404	5/5	0.86	0.25	85,86,93,96	0
2	PEG	A	401	7/7	0.86	0.16	36,43,48,48	0
2	PEG	B	402	7/7	0.90	0.12	33,36,40,40	0

## 6.5 Other polymers [i](#)

There are no such residues in this entry.