



Full wwPDB X-ray Structure Validation Report ⓘ

Aug 6, 2025 – 11:26 am BST

PDB ID : 9HGK / pdb_00009hgk
Title : Crystal Structure of the Coxiella burnetii 2-methylisocitrate lyase
Authors : Stuart, W.; Isupov, M.; Harmer, N.J.
Deposited on : 2024-11-19
Resolution : 1.60 Å(reported)

This is a Full wwPDB X-ray Structure Validation Report for a publicly released PDB entry.

We welcome your comments at validation@mail.wwpdb.org

A user guide is available at

<https://www.wwpdb.org/validation/2017/XrayValidationReportHelp>

with specific help available everywhere you see the ⓘ symbol.

The types of validation reports are described at

<http://www.wwpdb.org/validation/2017/FAQs#types>.

The following versions of software and data (see [references ⓘ](#)) were used in the production of this report:

MolProbity : 4-5-2 with Phenix2.0rc1
Mogul : 1.8.4, CSD as541be (2020)
Xtriage (Phenix) : 2.0rc1
EDS : 3.0
Percentile statistics : 20231227.v01 (using entries in the PDB archive December 27th 2023)
CCP4 : 9.0.006 (Gargrove)
Density-Fitness : 1.0.12
Ideal geometry (proteins) : Engh & Huber (2001)
Ideal geometry (DNA, RNA) : Parkinson et al. (1996)
Validation Pipeline (wwPDB-VP) : 2.45.1

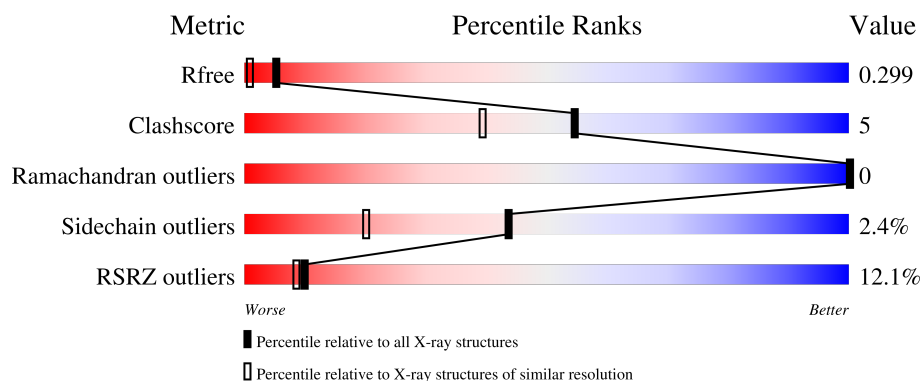
1 Overall quality at a glance

The following experimental techniques were used to determine the structure:

X-RAY DIFFRACTION

The reported resolution of this entry is 1.60 Å.

Percentile scores (ranging between 0-100) for global validation metrics of the entry are shown in the following graphic. The table shows the number of entries on which the scores are based.



Metric	Whole archive (#Entries)	Similar resolution (#Entries, resolution range(Å))
R_{free}	164625	4274 (1.60-1.60)
Clashscore	180529	4682 (1.60-1.60)
Ramachandran outliers	177936	4583 (1.60-1.60)
Sidechain outliers	177891	4582 (1.60-1.60)
RSRZ outliers	164620	4272 (1.60-1.60)

The table below summarises the geometric issues observed across the polymeric chains and their fit to the electron density. The red, orange, yellow and green segments of the lower bar indicate the fraction of residues that contain outliers for ≥ 3 , 2, 1 and 0 types of geometric quality criteria respectively. A grey segment represents the fraction of residues that are not modelled. The numeric value for each fraction is indicated below the corresponding segment, with a dot representing fractions $\leq 5\%$. The upper red bar (where present) indicates the fraction of residues that have poor fit to the electron density. The numeric value is given above the bar.

Mol	Chain	Length	Quality of chain
1	A	312	
1	B	312	

The following table lists non-polymeric compounds, carbohydrate monomers and non-standard residues in protein, DNA, RNA chains that are outliers for geometric or electron-density-fit criteria:

Mol	Type	Chain	Res	Chirality	Geometry	Clashes	Electron density
2	EPE	A	301	-	X	-	-
2	EPE	B	301	-	X	-	-

2 Entry composition

There are 6 unique types of molecules in this entry. The entry contains 4820 atoms, of which 0 are hydrogens and 0 are deuteriums.

In the tables below, the ZeroOcc column contains the number of atoms modelled with zero occupancy, the AltConf column contains the number of residues with at least one atom in alternate conformation and the Trace column contains the number of residues modelled with at most 2 atoms.

- Molecule 1 is a protein called 2-methylisocitrate lyase.

Mol	Chain	Residues	Atoms					ZeroOcc	AltConf	Trace
1	A	300	Total	C	N	O	S	0	2	0
			2313	1464	399	437	13			
1	B	287	Total	C	N	O	S	0	2	0
			2212	1400	383	416	13			

There are 44 discrepancies between the modelled and reference sequences:

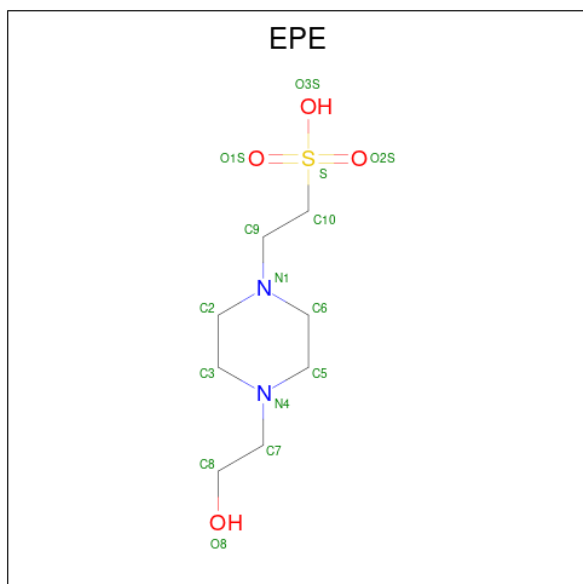
Chain	Residue	Modelled	Actual	Comment	Reference
A	-21	MET	-	initiating methionine	UNP Q83DG5
A	-20	HIS	-	expression tag	UNP Q83DG5
A	-19	HIS	-	expression tag	UNP Q83DG5
A	-18	HIS	-	expression tag	UNP Q83DG5
A	-17	HIS	-	expression tag	UNP Q83DG5
A	-16	HIS	-	expression tag	UNP Q83DG5
A	-15	HIS	-	expression tag	UNP Q83DG5
A	-14	SER	-	expression tag	UNP Q83DG5
A	-13	SER	-	expression tag	UNP Q83DG5
A	-12	GLY	-	expression tag	UNP Q83DG5
A	-11	VAL	-	expression tag	UNP Q83DG5
A	-10	ASP	-	expression tag	UNP Q83DG5
A	-9	LEU	-	expression tag	UNP Q83DG5
A	-8	GLY	-	expression tag	UNP Q83DG5
A	-7	THR	-	expression tag	UNP Q83DG5
A	-6	GLU	-	expression tag	UNP Q83DG5
A	-5	ASN	-	expression tag	UNP Q83DG5
A	-4	LEU	-	expression tag	UNP Q83DG5
A	-3	TYR	-	expression tag	UNP Q83DG5
A	-2	PHE	-	expression tag	UNP Q83DG5
A	-1	GLN	-	expression tag	UNP Q83DG5
A	0	SER	-	expression tag	UNP Q83DG5
B	-21	MET	-	initiating methionine	UNP Q83DG5
B	-20	HIS	-	expression tag	UNP Q83DG5
B	-19	HIS	-	expression tag	UNP Q83DG5

Continued on next page...

Continued from previous page...

Chain	Residue	Modelled	Actual	Comment	Reference
B	-18	HIS	-	expression tag	UNP Q83DG5
B	-17	HIS	-	expression tag	UNP Q83DG5
B	-16	HIS	-	expression tag	UNP Q83DG5
B	-15	HIS	-	expression tag	UNP Q83DG5
B	-14	SER	-	expression tag	UNP Q83DG5
B	-13	SER	-	expression tag	UNP Q83DG5
B	-12	GLY	-	expression tag	UNP Q83DG5
B	-11	VAL	-	expression tag	UNP Q83DG5
B	-10	ASP	-	expression tag	UNP Q83DG5
B	-9	LEU	-	expression tag	UNP Q83DG5
B	-8	GLY	-	expression tag	UNP Q83DG5
B	-7	THR	-	expression tag	UNP Q83DG5
B	-6	GLU	-	expression tag	UNP Q83DG5
B	-5	ASN	-	expression tag	UNP Q83DG5
B	-4	LEU	-	expression tag	UNP Q83DG5
B	-3	TYR	-	expression tag	UNP Q83DG5
B	-2	PHE	-	expression tag	UNP Q83DG5
B	-1	GLN	-	expression tag	UNP Q83DG5
B	0	SER	-	expression tag	UNP Q83DG5

- Molecule 2 is 4-(2-HYDROXYETHYL)-1-PIPERAZINE ETHANESULFONIC ACID (CCD ID: EPE) (formula: $C_8H_{18}N_2O_4S$).



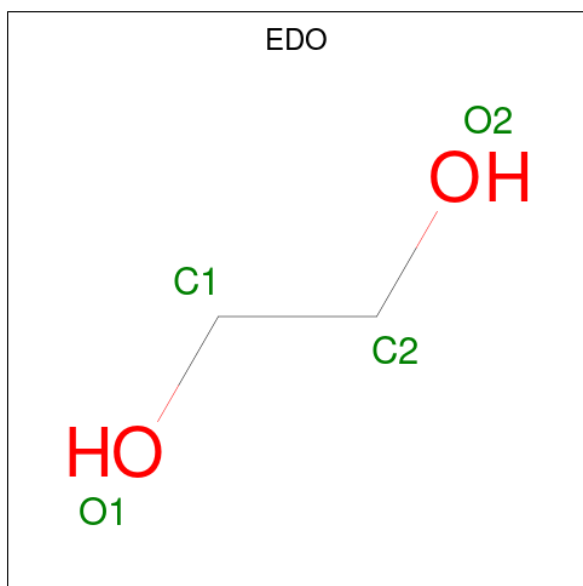
Mol	Chain	Residues	Atoms				ZeroOcc	AltConf
2	A	1	Total	C	O	S	0	0
			6	2	3	1		

Continued on next page...

Continued from previous page...

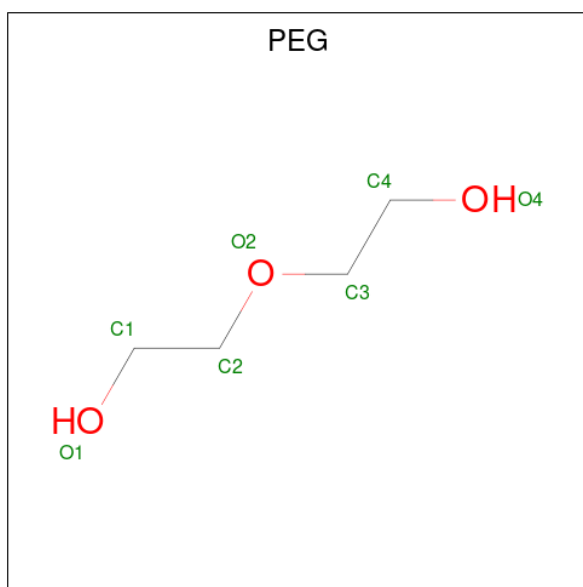
Mol	Chain	Residues	Atoms				ZeroOcc	AltConf
2	B	1	Total	C	O	S	0	0
			6	2	3	1		

- Molecule 3 is 1,2-ETHANEDIOL (CCD ID: EDO) (formula: $C_2H_6O_2$).



Mol	Chain	Residues	Atoms			ZeroOcc	AltConf
3	A	1	Total	C	O	0	0
			4	2	2		
3	A	1	Total	C	O	0	0
			4	2	2		
3	B	1	Total	C	O	0	0
			4	2	2		
3	B	1	Total	C	O	0	0
			4	2	2		
3	B	1	Total	C	O	0	0
			4	2	2		

- Molecule 4 is DI(HYDROXYETHYL)ETHER (CCD ID: PEG) (formula: $C_4H_{10}O_3$).



Mol	Chain	Residues	Atoms			ZeroOcc	AltConf
4	A	1	Total	C	O	0	0
			7	4	3		

- Molecule 5 is CHLORIDE ION (CCD ID: CL) (formula: Cl).

Mol	Chain	Residues	Atoms		ZeroOcc	AltConf
5	A	1	Total	Cl	0	0
			1	1		

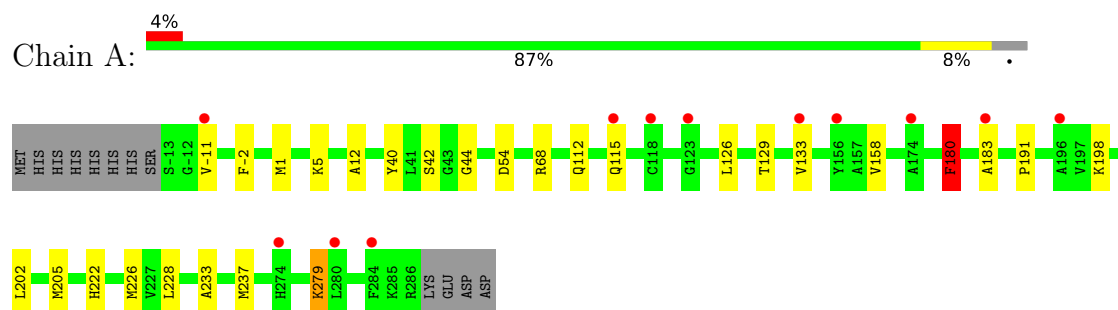
- Molecule 6 is water.

Mol	Chain	Residues	Atoms		ZeroOcc	AltConf
6	A	162	Total	O	0	0
			162	162		
6	B	93	Total	O	0	0
			93	93		

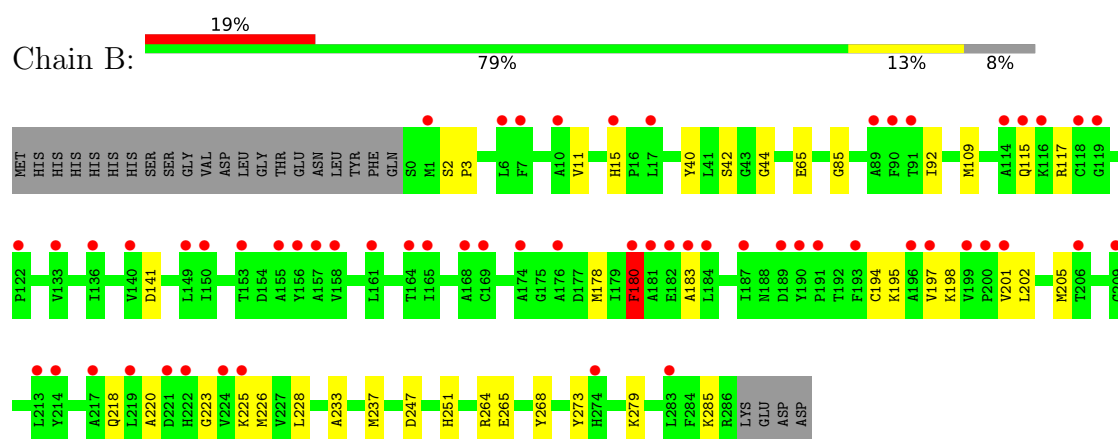
3 Residue-property plots [i](#)

These plots are drawn for all protein, RNA, DNA and oligosaccharide chains in the entry. The first graphic for a chain summarises the proportions of the various outlier classes displayed in the second graphic. The second graphic shows the sequence view annotated by issues in geometry and electron density. Residues are color-coded according to the number of geometric quality criteria for which they contain at least one outlier: green = 0, yellow = 1, orange = 2 and red = 3 or more. A red dot above a residue indicates a poor fit to the electron density ($RSRZ > 2$). Stretches of 2 or more consecutive residues without any outlier are shown as a green connector. Residues present in the sample, but not in the model, are shown in grey.

• Molecule 1: 2-methylisocitrate lyase



• Molecule 1: 2-methylisocitrate lyase



4 Data and refinement statistics

Property	Value	Source
Space group	P 31 2 1	Depositor
Cell constants a, b, c, α , β , γ	74.96Å 74.96Å 183.99Å 90.00° 90.00° 120.00°	Depositor
Resolution (Å)	53.04 – 1.60 53.04 – 1.60	Depositor EDS
% Data completeness (in resolution range)	97.3 (53.04-1.60) 97.3 (53.04-1.60)	Depositor EDS
R_{merge}	(Not available)	Depositor
R_{sym}	(Not available)	Depositor
$\langle I/\sigma(I) \rangle$ ¹	1.02 (at 1.60Å)	Xtriage
Refinement program	REFMAC 5.8.0267	Depositor
R, R_{free}	0.235 , 0.299 0.235 , 0.299	Depositor DCC
R_{free} test set	3945 reflections (4.93%)	wwPDB-VP
Wilson B-factor (Å ²)	36.6	Xtriage
Anisotropy	0.396	Xtriage
Bulk solvent k_{sol} (e/Å ³), B_{sol} (Å ²)	0.34 , 44.0	EDS
L-test for twinning ²	$\langle L \rangle = 0.51$, $\langle L^2 \rangle = 0.34$	Xtriage
Estimated twinning fraction	0.018 for -h,-k,l	Xtriage
F_o, F_c correlation	0.97	EDS
Total number of atoms	4820	wwPDB-VP
Average B, all atoms (Å ²)	57.0	wwPDB-VP

Xtriage's analysis on translational NCS is as follows: *The largest off-origin peak in the Patterson function is 7.17% of the height of the origin peak. No significant pseudotranslation is detected.*

¹Intensities estimated from amplitudes.

²Theoretical values of $\langle |L| \rangle$, $\langle L^2 \rangle$ for acentric reflections are 0.5, 0.333 respectively for untwinned datasets, and 0.375, 0.2 for perfectly twinned datasets.

5 Model quality

5.1 Standard geometry

Bond lengths and bond angles in the following residue types are not validated in this section: EDO, EPE, CL, PEG

The Z score for a bond length (or angle) is the number of standard deviations the observed value is removed from the expected value. A bond length (or angle) with $|Z| > 5$ is considered an outlier worth inspection. RMSZ is the root-mean-square of all Z scores of the bond lengths (or angles).

Mol	Chain	Bond lengths		Bond angles	
		RMSZ	$\# Z > 5$	RMSZ	$\# Z > 5$
1	A	0.54	0/2359	0.99	1/3196 (0.0%)
1	B	0.53	0/2256	0.99	1/3056 (0.0%)
All	All	0.54	0/4615	0.99	2/6252 (0.0%)

There are no bond length outliers.

All (2) bond angle outliers are listed below:

Mol	Chain	Res	Type	Atoms	Z	Observed(°)	Ideal(°)
1	A	180	PHE	CA-CB-CG	5.68	119.48	113.80
1	B	180	PHE	CA-CB-CG	5.60	119.40	113.80

There are no chirality outliers.

There are no planarity outliers.

5.2 Too-close contacts

In the following table, the Non-H and H(model) columns list the number of non-hydrogen atoms and hydrogen atoms in the chain respectively. The H(added) column lists the number of hydrogen atoms added and optimized by MolProbity. The Clashes column lists the number of clashes within the asymmetric unit, whereas Symm-Clashes lists symmetry-related clashes.

Mol	Chain	Non-H	H(model)	H(added)	Clashes	Symm-Clashes
1	A	2313	0	2320	20	0
1	B	2212	0	2227	23	0
2	A	6	0	3	5	0
2	B	6	0	3	2	0
3	A	8	0	12	0	0
3	B	12	0	18	3	0
4	A	7	0	10	0	0

Continued on next page...

Continued from previous page...

Mol	Chain	Non-H	H(model)	H(added)	Clashes	Symm-Clashes
5	A	1	0	0	0	0
6	A	162	0	0	3	0
6	B	93	0	0	1	0
All	All	4820	0	4593	43	0

The all-atom clashscore is defined as the number of clashes found per 1000 atoms (including hydrogen atoms). The all-atom clashscore for this structure is 5.

All (43) close contacts within the same asymmetric unit are listed below, sorted by their clash magnitude.

Atom-1	Atom-2	Interatomic distance (Å)	Clash overlap (Å)
1:A:12:ALA:HA	6:A:435:HOH:O	1.72	0.87
1:A:44:GLY:H	2:A:301:EPE:H101	1.42	0.84
1:B:44:GLY:H	2:B:301:EPE:H101	1.51	0.74
1:B:65:GLU:OE2	3:B:304:EDO:H21	1.87	0.72
2:A:301:EPE:H102	6:A:525:HOH:O	1.95	0.67
1:B:15:HIS:CE1	1:B:220:ALA:HB1	2.31	0.65
1:A:202:LEU:HB2	1:A:226:MET:HE3	1.79	0.65
1:A:54:ASP:OD2	2:A:301:EPE:O1S	2.14	0.65
1:B:202:LEU:HB2	1:B:226:MET:HE3	1.81	0.62
1:B:218:GLN:HG3	6:B:421:HOH:O	2.01	0.59
1:B:247:ASP:OD1	1:B:251:HIS:HD2	1.88	0.56
1:A:1:MET:HG2	1:A:5:LYS:CG	2.37	0.54
1:A:68:ARG:NH2	6:A:403:HOH:O	2.32	0.52
1:B:85:GLY:HA3	1:B:109:MET:HE3	1.92	0.52
1:A:1:MET:HG2	1:A:5:LYS:HG2	1.91	0.51
1:B:264:ARG:NH2	1:B:268:TYR:CE2	2.77	0.51
1:B:92:ILE:HG12	1:B:109:MET:HE1	1.93	0.51
1:B:194:CYS:SG	1:B:223:GLY:O	2.69	0.50
1:B:65:GLU:OE2	3:B:304:EDO:C2	2.56	0.50
1:A:115:GLN:O	1:A:115:GLN:HG2	2.15	0.47
1:B:202:LEU:C	1:B:202:LEU:HD23	2.40	0.46
1:A:202:LEU:C	1:A:202:LEU:HD23	2.41	0.46
1:B:201:VAL:H	1:B:225:LYS:HE3	1.80	0.46
1:A:44:GLY:H	2:A:301:EPE:C10	2.21	0.44
1:A:279:LYS:HD3	1:B:141:ASP:OD2	2.18	0.43
1:A:40:TYR:CG	1:A:228:LEU:HD11	2.54	0.43
1:B:42:SER:OG	2:B:301:EPE:C9	2.67	0.43
1:A:126:LEU:HD11	1:A:158:VAL:CG2	2.49	0.42
1:B:273:TYR:CD1	3:B:302:EDO:O2	2.68	0.42
1:A:180:PHE:CD1	1:A:180:PHE:C	2.98	0.42

Continued on next page...

Continued from previous page...

Atom-1	Atom-2	Interatomic distance (Å)	Clash overlap (Å)
1:A:183:ALA:HB2	1:A:205:MET:HE2	2.01	0.42
1:A:129:THR:O	1:A:133:VAL:HG23	2.20	0.42
1:B:40:TYR:CG	1:B:228:LEU:HD11	2.55	0.42
1:A:191:PRO:HD3	1:A:222:HIS:HB3	2.02	0.42
1:B:2:SER:O	1:B:3:PRO:C	2.63	0.41
1:B:183:ALA:HB2	1:B:205:MET:HE2	2.02	0.41
1:B:180:PHE:C	1:B:180:PHE:CD1	2.98	0.41
1:B:197:VAL:C	1:B:198:LYS:HG3	2.45	0.41
1:B:233:ALA:O	1:B:237:MET:HG3	2.20	0.41
1:A:-11:VAL:HG23	1:A:-2:PHE:HB3	2.02	0.40
1:A:42:SER:OG	2:A:301:EPE:C9	2.69	0.40
1:B:11:VAL:HG21	1:B:178:MET:HE1	2.02	0.40
1:A:233:ALA:O	1:A:237:MET:HG3	2.22	0.40

There are no symmetry-related clashes.

5.3 Torsion angles [i](#)

5.3.1 Protein backbone [i](#)

In the following table, the Percentiles column shows the percent Ramachandran outliers of the chain as a percentile score with respect to all X-ray entries followed by that with respect to entries of similar resolution.

The Analysed column shows the number of residues for which the backbone conformation was analysed, and the total number of residues.

Mol	Chain	Analysed	Favoured	Allowed	Outliers	Percentiles	
1	A	300/312 (96%)	294 (98%)	6 (2%)	0	100	100
1	B	287/312 (92%)	278 (97%)	9 (3%)	0	100	100
All	All	587/624 (94%)	572 (97%)	15 (3%)	0	100	100

There are no Ramachandran outliers to report.

5.3.2 Protein sidechains [i](#)

In the following table, the Percentiles column shows the percent sidechain outliers of the chain as a percentile score with respect to all X-ray entries followed by that with respect to entries of similar resolution.

The Analysed column shows the number of residues for which the sidechain conformation was analysed, and the total number of residues.

Mol	Chain	Analysed	Rotameric	Outliers	Percentiles	
1	A	240/250 (96%)	236 (98%)	4 (2%)	56	33
1	B	229/250 (92%)	222 (97%)	7 (3%)	35	13
All	All	469/500 (94%)	458 (98%)	11 (2%)	44	21

All (11) residues with a non-rotameric sidechain are listed below:

Mol	Chain	Res	Type
1	A	112	GLN
1	A	180	PHE
1	A	198	LYS
1	A	279	LYS
1	B	115	GLN
1	B	117	ARG
1	B	180	PHE
1	B	195	LYS
1	B	265	GLU
1	B	279	LYS
1	B	285	LYS

Sometimes sidechains can be flipped to improve hydrogen bonding and reduce clashes. All (12) such sidechains are listed below:

Mol	Chain	Res	Type
1	A	-5	ASN
1	A	18	GLN
1	A	112	GLN
1	A	145	ASN
1	A	282	GLN
1	B	9	GLN
1	B	15	HIS
1	B	18	GLN
1	B	120	HIS
1	B	222	HIS
1	B	251	HIS
1	B	282	GLN

5.3.3 RNA ⓘ

There are no RNA molecules in this entry.

5.4 Non-standard residues in protein, DNA, RNA chains [i](#)

There are no non-standard protein/DNA/RNA residues in this entry.

5.5 Carbohydrates [i](#)

There are no oligosaccharides in this entry.

5.6 Ligand geometry [i](#)

Of 9 ligands modelled in this entry, 1 is monoatomic - leaving 8 for Mogul analysis.

In the following table, the Counts columns list the number of bonds (or angles) for which Mogul statistics could be retrieved, the number of bonds (or angles) that are observed in the model and the number of bonds (or angles) that are defined in the Chemical Component Dictionary. The Link column lists molecule types, if any, to which the group is linked. The Z score for a bond length (or angle) is the number of standard deviations the observed value is removed from the expected value. A bond length (or angle) with $|Z| > 2$ is considered an outlier worth inspection. RMSZ is the root-mean-square of all Z scores of the bond lengths (or angles).

Mol	Type	Chain	Res	Link	Bond lengths			Bond angles		
					Counts	RMSZ	$\# Z > 2$	Counts	RMSZ	$\# Z > 2$
3	EDO	B	303	-	3,3,3	0.05	0	2,2,2	0.17	0
3	EDO	B	304	-	3,3,3	0.23	0	2,2,2	0.64	0
3	EDO	A	302	-	3,3,3	0.23	0	2,2,2	0.26	0
3	EDO	A	303	-	3,3,3	0.27	0	2,2,2	0.26	0
2	EPE	B	301	-	5,5,15	1.19	1 (20%)	7,7,20	1.21	2 (28%)
4	PEG	A	304	-	6,6,6	0.29	0	5,5,5	0.21	0
3	EDO	B	302	-	3,3,3	0.46	0	2,2,2	0.57	0
2	EPE	A	301	-	5,5,15	1.78	2 (40%)	7,7,20	2.05	4 (57%)

In the following table, the Chirals column lists the number of chiral outliers, the number of chiral centers analysed, the number of these observed in the model and the number defined in the Chemical Component Dictionary. Similar counts are reported in the Torsion and Rings columns. '-' means no outliers of that kind were identified.

Mol	Type	Chain	Res	Link	Chirals	Torsions	Rings
3	EDO	B	303	-	-	1/1/1/1	-
3	EDO	B	304	-	-	0/1/1/1	-
3	EDO	A	302	-	-	1/1/1/1	-
3	EDO	A	303	-	-	1/1/1/1	-
2	EPE	B	301	-	-	3/3/3/19	-
4	PEG	A	304	-	-	4/4/4/4	-

Continued on next page...

Continued from previous page...

Mol	Type	Chain	Res	Link	Chirals	Torsions	Rings
3	EDO	B	302	-	-	1/1/1/1	-
2	EPE	A	301	-	-	3/3/3/19	-

All (3) bond length outliers are listed below:

Mol	Chain	Res	Type	Atoms	Z	Observed(Å)	Ideal(Å)
2	A	301	EPE	O3S-S	3.08	1.58	1.47
2	B	301	EPE	O3S-S	2.49	1.56	1.47
2	A	301	EPE	C9-C10	2.47	1.59	1.51

All (6) bond angle outliers are listed below:

Mol	Chain	Res	Type	Atoms	Z	Observed(°)	Ideal(°)
2	A	301	EPE	O3S-S-C10	2.65	110.06	105.77
2	A	301	EPE	O1S-S-C10	2.45	109.86	106.92
2	A	301	EPE	O3S-S-O1S	-2.29	105.69	111.27
2	A	301	EPE	C9-C10-S	2.18	118.33	113.00
2	B	301	EPE	C9-C10-S	2.11	118.15	113.00
2	B	301	EPE	O3S-S-C10	-2.06	102.43	105.77

There are no chirality outliers.

All (14) torsion outliers are listed below:

Mol	Chain	Res	Type	Atoms
2	B	301	EPE	C9-C10-S-O1S
2	B	301	EPE	C9-C10-S-O2S
2	B	301	EPE	C9-C10-S-O3S
4	A	304	PEG	O1-C1-C2-O2
3	A	302	EDO	O1-C1-C2-O2
2	A	301	EPE	C9-C10-S-O2S
4	A	304	PEG	O2-C3-C4-O4
3	B	303	EDO	O1-C1-C2-O2
4	A	304	PEG	C4-C3-O2-C2
2	A	301	EPE	C9-C10-S-O3S
2	A	301	EPE	C9-C10-S-O1S
4	A	304	PEG	C1-C2-O2-C3
3	B	302	EDO	O1-C1-C2-O2
3	A	303	EDO	O1-C1-C2-O2

There are no ring outliers.

4 monomers are involved in 10 short contacts:

Mol	Chain	Res	Type	Clashes	Symm-Clashes
3	B	304	EDO	2	0
2	B	301	EPE	2	0
3	B	302	EDO	1	0
2	A	301	EPE	5	0

5.7 Other polymers [i](#)

There are no such residues in this entry.

5.8 Polymer linkage issues [i](#)

There are no chain breaks in this entry.

6 Fit of model and data

6.1 Protein, DNA and RNA chains

In the following table, the column labelled ‘#RSRZ > 2’ contains the number (and percentage) of RSRZ outliers, followed by percent RSRZ outliers for the chain as percentile scores relative to all X-ray entries and entries of similar resolution. The OWAB column contains the minimum, median, 95th percentile and maximum values of the occupancy-weighted average B-factor per residue. The column labelled ‘Q < 0.9’ lists the number of (and percentage) of residues with an average occupancy less than 0.9.

Mol	Chain	Analysed	<RSRZ>	#RSRZ>2	OWAB(Å ²)	Q<0.9
1	A	300/312 (96%)	0.50	12 (4%) 43 43	23, 46, 87, 140	2 (0%)
1	B	287/312 (91%)	1.12	59 (20%) 3 2	33, 59, 110, 139	2 (0%)
All	All	587/624 (94%)	0.80	71 (12%) 10 8	23, 52, 106, 140	4 (0%)

All (71) RSRZ outliers are listed below:

Mol	Chain	Res	Type	RSRZ
1	B	157	ALA	4.0
1	B	196	ALA	4.0
1	B	193	PHE	3.8
1	B	183	ALA	3.7
1	A	284	PHE	3.6
1	B	184	LEU	3.6
1	B	118	CYS	3.4
1	B	199	VAL	3.3
1	B	181	ALA	3.3
1	B	122	PRO	3.3
1	B	191	PRO	3.3
1	B	115	GLN	3.2
1	B	274	HIS	3.2
1	B	190	TYR	3.1
1	B	214	TYR	3.1
1	B	90	PHE	3.1
1	B	165	ILE	3.1
1	B	133	VAL	3.0
1	A	156	TYR	2.9
1	A	123	GLY	2.9
1	B	180	PHE	2.9
1	B	156	TYR	2.8
1	B	219	LEU	2.8
1	B	174	ALA	2.7

Continued on next page...

Continued from previous page...

Mol	Chain	Res	Type	RSRZ
1	B	176	ALA	2.7
1	B	17	LEU	2.7
1	B	164	THR	2.7
1	A	115	GLN	2.7
1	A	274	HIS	2.7
1	B	149	LEU	2.6
1	B	182[A]	GLU	2.6
1	B	283	LEU	2.5
1	B	161	LEU	2.5
1	B	213	LEU	2.5
1	B	201	VAL	2.5
1	B	155	ALA	2.5
1	B	187	ILE	2.5
1	B	200	PRO	2.4
1	B	168	ALA	2.4
1	B	119	GLY	2.4
1	B	7	PHE	2.4
1	B	150	ILE	2.4
1	B	158	VAL	2.4
1	B	222	HIS	2.3
1	B	6	LEU	2.3
1	B	1	MET	2.3
1	B	189	ASP	2.3
1	B	225	LYS	2.2
1	B	10	ALA	2.2
1	B	114	ALA	2.2
1	B	197	VAL	2.2
1	A	280	LEU	2.2
1	A	183	ALA	2.2
1	B	206	THR	2.2
1	A	-11	VAL	2.2
1	B	224	VAL	2.2
1	B	15	HIS	2.2
1	A	196	ALA	2.1
1	B	169	CYS	2.1
1	B	217	ALA	2.1
1	B	136	ILE	2.1
1	A	118	CYS	2.1
1	B	221	ASP	2.1
1	A	174	ALA	2.1
1	B	89	ALA	2.1
1	B	209	GLY	2.1

Continued on next page...

Continued from previous page...

Mol	Chain	Res	Type	RSRZ
1	A	133	VAL	2.1
1	B	140	VAL	2.0
1	B	91	THR	2.0
1	B	153	THR	2.0
1	B	116	LYS	2.0

6.2 Non-standard residues in protein, DNA, RNA chains [i](#)

There are no non-standard protein/DNA/RNA residues in this entry.

6.3 Carbohydrates [i](#)

There are no oligosaccharides in this entry.

6.4 Ligands [i](#)

In the following table, the Atoms column lists the number of modelled atoms in the group and the number defined in the chemical component dictionary. The B-factors column lists the minimum, median, 95th percentile and maximum values of B factors of atoms in the group. The column labelled 'Q< 0.9' lists the number of atoms with occupancy less than 0.9.

Mol	Type	Chain	Res	Atoms	RSCC	RSR	B-factors(Å ²)	Q<0.9
3	EDO	A	302	4/4	0.74	0.20	56,69,74,82	0
3	EDO	A	303	4/4	0.77	0.18	66,68,70,102	0
2	EPE	B	301	6/15	0.79	0.12	46,79,104,111	0
4	PEG	A	304	7/7	0.79	0.18	58,64,83,91	0
2	EPE	A	301	6/15	0.86	0.11	30,49,63,68	0
5	CL	A	305	1/1	0.88	0.10	66,66,66,66	0
3	EDO	B	304	4/4	0.91	0.12	35,44,60,67	0
3	EDO	B	302	4/4	0.91	0.16	29,37,62,66	0
3	EDO	B	303	4/4	0.91	0.13	62,69,71,72	0

6.5 Other polymers [i](#)

There are no such residues in this entry.