



Full wwPDB X-ray Structure Validation Report ⓘ

Oct 29, 2024 – 02:00 PM EDT

PDB ID : 4HB4
Title : Crystal structure of CRM1 inhibitor Leptomycin B in complex with CRM1(537DLTVK541/GLCEQ)-Ran-RanBP1
Authors : Sun, Q.; Chook, Y.M.
Deposited on : 2012-09-27
Resolution : 2.05 Å(reported)

This is a Full wwPDB X-ray Structure Validation Report for a publicly released PDB entry.

We welcome your comments at validation@mail.wwpdb.org

A user guide is available at

<https://www.wwpdb.org/validation/2017/XrayValidationReportHelp>

with specific help available everywhere you see the ⓘ symbol.

The types of validation reports are described at

<http://www.wwpdb.org/validation/2017/FAQs#types>.

The following versions of software and data (see [references ⓘ](#)) were used in the production of this report:

MolProbity	:	4.02b-467
Mogul	:	2022.3.0, CSD as543be (2022)
Xtriage (Phenix)	:	1.20.1
EDS	:	3.0
buster-report	:	1.1.7 (2018)
Percentile statistics	:	20231227.v01 (using entries in the PDB archive December 27th 2023)
CCP4	:	9.0.003 (Gargrove)
Density-Fitness	:	1.0.11
Ideal geometry (proteins)	:	Engh & Huber (2001)
Ideal geometry (DNA, RNA)	:	Parkinson et al. (1996)
Validation Pipeline (wwPDB-VP)	:	2.39

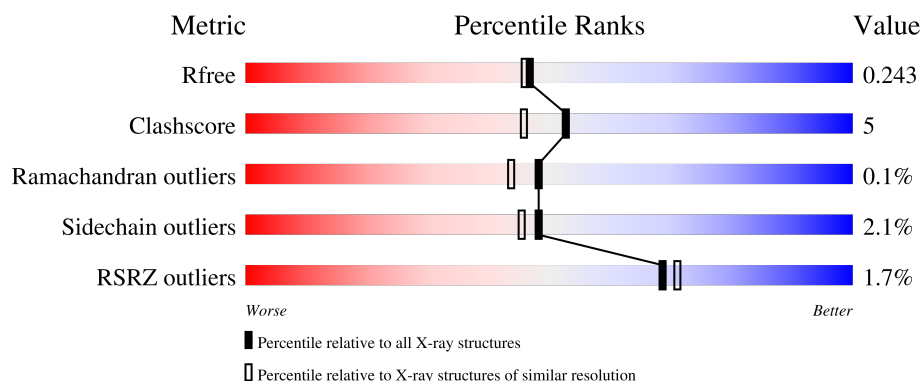
1 Overall quality at a glance

The following experimental techniques were used to determine the structure:

X-RAY DIFFRACTION

The reported resolution of this entry is 2.05 Å.

Percentile scores (ranging between 0-100) for global validation metrics of the entry are shown in the following graphic. The table shows the number of entries on which the scores are based.



Metric	Whole archive (#Entries)	Similar resolution (#Entries, resolution range(Å))
R_{free}	164625	2096 (2.04-2.04)
Clashscore	180529	2229 (2.04-2.04)
Ramachandran outliers	177936	2217 (2.04-2.04)
Sidechain outliers	177891	2217 (2.04-2.04)
RSRZ outliers	164620	2096 (2.04-2.04)

The table below summarises the geometric issues observed across the polymeric chains and their fit to the electron density. The red, orange, yellow and green segments of the lower bar indicate the fraction of residues that contain outliers for ≥ 3 , 2, 1 and 0 types of geometric quality criteria respectively. A grey segment represents the fraction of residues that are not modelled. The numeric value for each fraction is indicated below the corresponding segment, with a dot representing fractions $\leq 5\%$. The upper red bar (where present) indicates the fraction of residues that have poor fit to the electron density. The numeric value is given above the bar.

Mol	Chain	Length	Quality of chain
1	A	216	<div> <div>5%</div> <div> <div></div> <div>87%</div> <div>10%</div> <div>.</div> </div> </div>
2	B	140	<div> <div>77%</div> <div>9%</div> <div>14%</div> </div>
3	C	1023	<div> <div>%</div> <div>87%</div> <div>11%</div> <div>..</div> </div>

2 Entry composition

There are 10 unique types of molecules in this entry. The entry contains 12016 atoms, of which 0 are hydrogens and 0 are deuteriums.

In the tables below, the ZeroOcc column contains the number of atoms modelled with zero occupancy, the AltConf column contains the number of residues with at least one atom in alternate conformation and the Trace column contains the number of residues modelled with at most 2 atoms.

- Molecule 1 is a protein called GTP-binding nuclear protein Ran.

Mol	Chain	Residues	Atoms					ZeroOcc	AltConf	Trace
1	A	209	Total	C	N	O	S	0	6	0
			1723	1113	294	309	7			

- Molecule 2 is a protein called Ran-specific GTPase-activating protein 1.

Mol	Chain	Residues	Atoms					ZeroOcc	AltConf	Trace
2	B	121	Total	C	N	O	S	0	1	0
			1005	636	176	189	4			

There is a discrepancy between the modelled and reference sequences:

Chain	Residue	Modelled	Actual	Comment	Reference
B	98	LYS	ALA	conflict	UNP P41920

- Molecule 3 is a protein called Exportin-1.

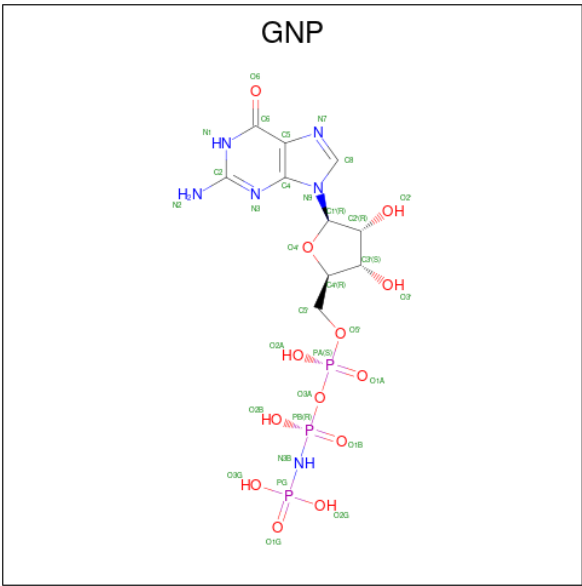
Mol	Chain	Residues	Atoms					ZeroOcc	AltConf	Trace
3	C	1017	Total	C	N	O	S	0	25	0
			8342	5373	1359	1567	43			

There are 7 discrepancies between the modelled and reference sequences:

Chain	Residue	Modelled	Actual	Comment	Reference
C	-1	GLY	-	expression tag	UNP P30822
C	0	ALA	-	expression tag	UNP P30822
C	537	GLY	ASP	engineered mutation	UNP P30822
C	539	CYS	THR	engineered mutation	UNP P30822
C	540	GLU	VAL	engineered mutation	UNP P30822
C	541	GLN	LYS	engineered mutation	UNP P30822
C	1022	CYS	TYR	engineered mutation	UNP P30822

- Molecule 4 is PHOSPHOAMINOPHOSPHONIC ACID-GUANYLATE ESTER (three-letter

code: GNP) (formula: C₁₀H₁₇N₆O₁₃P₃).

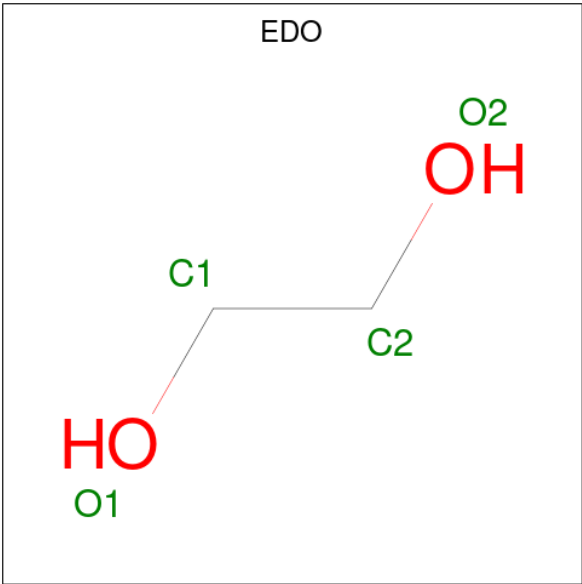


Mol	Chain	Residues	Atoms					ZeroOcc	AltConf
4	A	1	Total	C	N	O	P	0	0
			32	10	6	13	3		

- Molecule 5 is MAGNESIUM ION (three-letter code: MG) (formula: Mg).

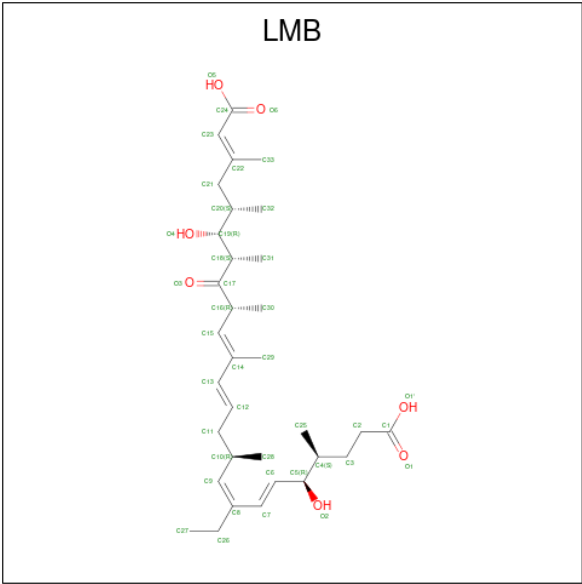
Mol	Chain	Residues	Atoms		ZeroOcc	AltConf
5	A	1	Total	Mg	0	0
			1	1		

- Molecule 6 is 1,2-ETHANEDIOL (three-letter code: EDO) (formula: C₂H₆O₂).



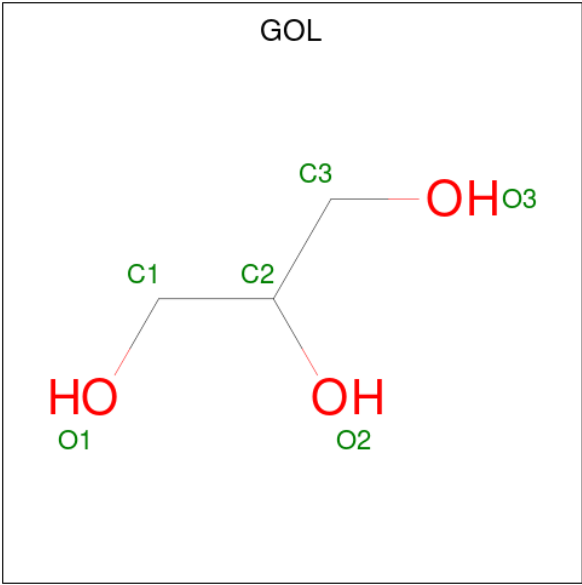
Mol	Chain	Residues	Atoms			ZeroOcc	AltConf
6	A	1	Total	C	O	0	0
			4	2	2		
6	C	1	Total	C	O	0	0
			4	2	2		

- Molecule 7 is Leptomycin B, bound form (three-letter code: LMB) (formula: C₃₃H₅₂O₇).



Mol	Chain	Residues	Atoms			ZeroOcc	AltConf
7	C	1	Total	C	O	0	0
			40	33	7		

- Molecule 8 is GLYCEROL (three-letter code: GOL) (formula: C₃H₈O₃).



Mol	Chain	Residues	Atoms			ZeroOcc	AltConf
8	C	1	Total	C	O	0	0
			6	3	3		

- Molecule 9 is CHLORIDE ION (three-letter code: CL) (formula: Cl).

Mol	Chain	Residues	Atoms		ZeroOcc	AltConf
9	C	4	Total	Cl	0	0
			4	4		

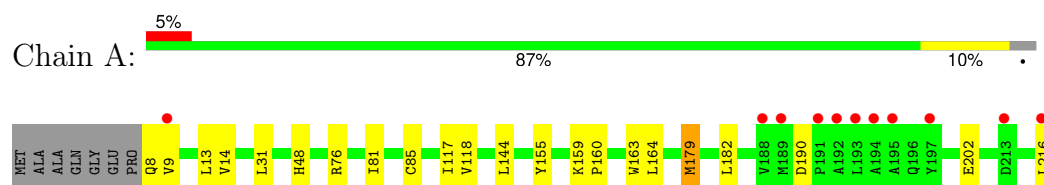
- Molecule 10 is water.

Mol	Chain	Residues	Atoms		ZeroOcc	AltConf
10	A	145	Total	O	0	0
			145	145		
10	B	40	Total	O	0	0
			40	40		
10	C	670	Total	O	0	0
			670	670		

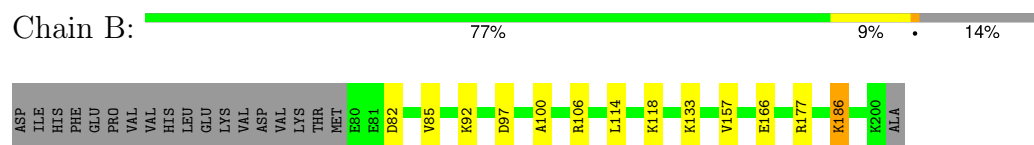
3 Residue-property plots [i](#)

These plots are drawn for all protein, RNA, DNA and oligosaccharide chains in the entry. The first graphic for a chain summarises the proportions of the various outlier classes displayed in the second graphic. The second graphic shows the sequence view annotated by issues in geometry and electron density. Residues are color-coded according to the number of geometric quality criteria for which they contain at least one outlier: green = 0, yellow = 1, orange = 2 and red = 3 or more. A red dot above a residue indicates a poor fit to the electron density ($RSRZ > 2$). Stretches of 2 or more consecutive residues without any outlier are shown as a green connector. Residues present in the sample, but not in the model, are shown in grey.

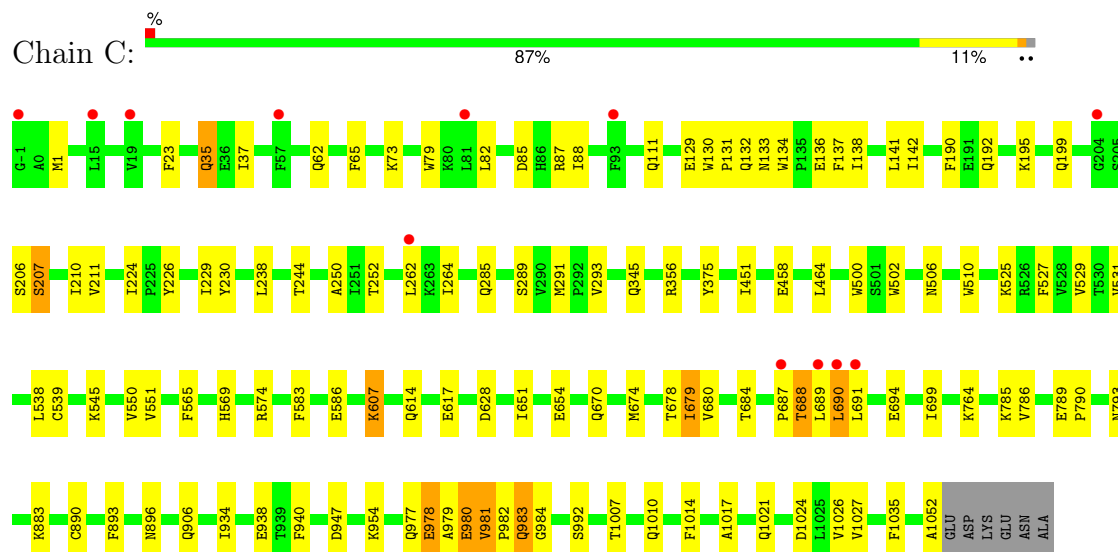
- Molecule 1: GTP-binding nuclear protein Ran



- Molecule 2: Ran-specific GTPase-activating protein 1



- Molecule 3: Exportin-1



4 Data and refinement statistics

Property	Value	Source
Space group	P 43 21 2	Depositor
Cell constants a, b, c, α , β , γ	105.97Å 105.97Å 304.93Å 90.00° 90.00° 90.00°	Depositor
Resolution (Å)	50.00 – 2.05 50.00 – 2.05	Depositor EDS
% Data completeness (in resolution range)	99.8 (50.00-2.05) 99.8 (50.00-2.05)	Depositor EDS
R_{merge}	(Not available)	Depositor
R_{sym}	(Not available)	Depositor
$\langle I/\sigma(I) \rangle$ ¹	1.69 (at 2.05Å)	Xtriage
Refinement program	REFMAC 5.6.0117	Depositor
R, R_{free}	0.188 , 0.218 0.217 , 0.243	Depositor DCC
R_{free} test set	5472 reflections (5.00%)	wwPDB-VP
Wilson B-factor (Å ²)	33.1	Xtriage
Anisotropy	0.197	Xtriage
Bulk solvent k_{sol} (e/Å ³), B_{sol} (Å ²)	0.33 , 45.2	EDS
L-test for twinning ²	$\langle L \rangle = 0.46$, $\langle L^2 \rangle = 0.28$	Xtriage
Estimated twinning fraction	No twinning to report.	Xtriage
F_o, F_c correlation	0.95	EDS
Total number of atoms	12016	wwPDB-VP
Average B, all atoms (Å ²)	32.0	wwPDB-VP

Xtriage's analysis on translational NCS is as follows: *The largest off-origin peak in the Patterson function is 4.02% of the height of the origin peak. No significant pseudotranslation is detected.*

¹Intensities estimated from amplitudes.

²Theoretical values of $\langle |L| \rangle$, $\langle L^2 \rangle$ for acentric reflections are 0.5, 0.333 respectively for untwinned datasets, and 0.375, 0.2 for perfectly twinned datasets.

5 Model quality [i](#)

5.1 Standard geometry [i](#)

Bond lengths and bond angles in the following residue types are not validated in this section: CL, MG, GNP, GOL, EDO, LMB

The Z score for a bond length (or angle) is the number of standard deviations the observed value is removed from the expected value. A bond length (or angle) with $|Z| > 5$ is considered an outlier worth inspection. RMSZ is the root-mean-square of all Z scores of the bond lengths (or angles).

Mol	Chain	Bond lengths		Bond angles	
		RMSZ	$\# Z > 5$	RMSZ	$\# Z > 5$
1	A	0.58	0/1777	0.65	0/2406
2	B	0.53	0/1022	0.66	0/1363
3	C	0.57	1/8568 (0.0%)	0.62	0/11610
All	All	0.57	1/11367 (0.0%)	0.63	0/15379

All (1) bond length outliers are listed below:

Mol	Chain	Res	Type	Atoms	Z	Observed(Å)	Ideal(Å)
3	C	502	TRP	CD2-CE2	5.20	1.47	1.41

There are no bond angle outliers.

There are no chirality outliers.

There are no planarity outliers.

5.2 Too-close contacts [i](#)

In the following table, the Non-H and H(model) columns list the number of non-hydrogen atoms and hydrogen atoms in the chain respectively. The H(added) column lists the number of hydrogen atoms added and optimized by MolProbity. The Clashes column lists the number of clashes within the asymmetric unit, whereas Symm-Clashes lists symmetry-related clashes.

Mol	Chain	Non-H	H(model)	H(added)	Clashes	Symm-Clashes
1	A	1723	0	1733	20	0
2	B	1005	0	1005	14	0
3	C	8342	0	8466	90	0
4	A	32	0	13	0	0
5	A	1	0	0	0	0
6	A	4	0	6	0	0
6	C	4	0	6	0	0

Continued on next page...

Continued from previous page...

Mol	Chain	Non-H	H(model)	H(added)	Clashes	Symm-Clashes
7	C	40	0	49	0	0
8	C	6	0	8	0	0
9	C	4	0	0	0	0
10	A	145	0	0	0	0
10	B	40	0	0	0	0
10	C	670	0	0	10	0
All	All	12016	0	11286	111	0

The all-atom clashscore is defined as the number of clashes found per 1000 atoms (including hydrogen atoms). The all-atom clashscore for this structure is 5.

All (111) close contacts within the same asymmetric unit are listed below, sorted by their clash magnitude.

Atom-1	Atom-2	Interatomic distance (Å)	Clash overlap (Å)
3:C:688:THR:HA	3:C:691:LEU:CD2	1.71	1.19
3:C:688:THR:CA	3:C:691:LEU:HD23	1.73	1.19
1:A:216:LEU:CD2	2:B:177:ARG:HE	1.68	1.06
3:C:688:THR:HA	3:C:691:LEU:HD23	1.07	1.05
1:A:216:LEU:HD22	2:B:177:ARG:HE	1.26	0.99
3:C:79:TRP:NE1	3:C:129:GLU:OE2	2.04	0.90
3:C:688:THR:C	3:C:691:LEU:HD23	1.96	0.86
3:C:688:THR:O	3:C:691:LEU:HB2	1.81	0.81
1:A:216:LEU:HD21	2:B:177:ARG:HE	1.49	0.76
3:C:679:ILE:HD12	3:C:699:ILE:HG13	1.68	0.74
3:C:674:MET:O	3:C:678:THR:HG23	1.88	0.73
3:C:688:THR:O	3:C:691:LEU:HD23	1.86	0.72
3:C:688:THR:CA	3:C:691:LEU:CD2	2.49	0.70
1:A:216:LEU:HD22	2:B:177:ARG:NE	2.05	0.68
3:C:688:THR:O	3:C:691:LEU:CD2	2.44	0.66
3:C:688:THR:C	3:C:691:LEU:CD2	2.67	0.63
3:C:1052:ALA:HB2	10:C:1762:HOH:O	2.01	0.61
3:C:977:GLN:O	3:C:980:GLU:HB2	2.01	0.61
3:C:375:TYR:CE2	10:C:1352:HOH:O	2.51	0.60
3:C:981:VAL:HG13	3:C:982:PRO:N	2.16	0.60
3:C:500:TRP:CZ3	3:C:538:LEU:HD11	2.39	0.58
3:C:978:GLU:HA	3:C:978:GLU:OE1	2.03	0.58
3:C:789[B]:GLU:HB2	3:C:790:PRO:HD3	1.85	0.58
3:C:680:VAL:O	3:C:684:THR:HG23	2.04	0.57
3:C:375:TYR:CD2	10:C:1352:HOH:O	2.57	0.56
3:C:226:TYR:HB3	10:C:1473:HOH:O	2.04	0.56
3:C:896:ASN:ND2	3:C:947:ASP:O	2.33	0.56

Continued on next page...

Continued from previous page...

Atom-1	Atom-2	Interatomic distance (Å)	Clash overlap (Å)
3:C:1052:ALA:CB	10:C:1762:HOH:O	2.53	0.56
3:C:451:ILE:HG13	3:C:550:VAL:HG23	1.87	0.55
3:C:978:GLU:O	3:C:979:ALA:HB3	2.07	0.55
3:C:679:ILE:HD12	3:C:699:ILE:CG1	2.34	0.54
3:C:690:LEU:HD13	3:C:690:LEU:O	2.08	0.54
3:C:983:GLN:HG3	3:C:984:GLY:N	2.22	0.54
3:C:690:LEU:HD21	3:C:699:ILE:CD1	2.38	0.54
3:C:244:THR:HG22	3:C:285:GLN:OE1	2.08	0.53
3:C:687:PRO:O	3:C:691:LEU:HD22	2.09	0.53
2:B:82:ASP:OD2	2:B:118:LYS:NZ	2.42	0.53
3:C:229:ILE:HG13	3:C:262:LEU:HD11	1.91	0.53
3:C:230:TYR:CE2	3:C:264:ILE:HD11	2.44	0.52
3:C:238:LEU:O	3:C:252:THR:HG21	2.10	0.52
3:C:244:THR:CG2	3:C:285:GLN:OE1	2.57	0.52
3:C:130:TRP:CD1	3:C:131:PRO:HA	2.45	0.52
1:A:216:LEU:HD23	2:B:92:LYS:HB3	1.92	0.51
3:C:134:TRP:CD1	3:C:137:PHE:HB2	2.45	0.51
3:C:85:ASP:HA	3:C:88:ILE:HD12	1.92	0.51
3:C:607:LYS:HG3	3:C:654:GLU:CG	2.41	0.51
3:C:1017:ALA:O	3:C:1021:GLN:HG3	2.11	0.51
1:A:13:LEU:C	1:A:13:LEU:HD23	2.31	0.51
1:A:179:MET:HE2	2:B:133:LYS:HG2	1.93	0.51
3:C:111:GLN:HA	3:C:111:GLN:OE1	2.11	0.50
3:C:688:THR:O	3:C:691:LEU:CB	2.57	0.50
3:C:981:VAL:CG1	3:C:982:PRO:N	2.75	0.49
3:C:293[A]:VAL:HG23	10:C:1323:HOH:O	2.12	0.49
1:A:216:LEU:HD21	2:B:177:ARG:NE	2.23	0.49
3:C:190:PHE:CZ	3:C:224:ILE:HG21	2.47	0.48
3:C:614:GLN:HB2	3:C:617:GLU:HG3	1.95	0.48
3:C:793:ASN:HB3	10:C:1671:HOH:O	2.13	0.48
3:C:285:GLN:O	3:C:289:SER:HB2	2.13	0.48
3:C:506:ASN:HB3	3:C:510:TRP:CZ2	2.48	0.48
3:C:525:LYS:O	3:C:529:VAL:HG23	2.14	0.48
3:C:82:LEU:O	3:C:87:ARG:NH1	2.47	0.47
3:C:141:LEU:C	3:C:141:LEU:HD23	2.34	0.47
1:A:13:LEU:HD23	1:A:14:VAL:N	2.29	0.47
3:C:207:SER:HB3	3:C:210:ILE:H	1.80	0.47
3:C:688:THR:HA	3:C:691:LEU:HD21	1.80	0.47
3:C:764:LYS:HD3	10:C:1405:HOH:O	2.14	0.47
3:C:525:LYS:NZ	3:C:569:HIS:HE1	2.12	0.46
3:C:690:LEU:HD21	3:C:699:ILE:HD13	1.96	0.46

Continued on next page...

Continued from previous page...

Atom-1	Atom-2	Interatomic distance (Å)	Clash overlap (Å)
1:A:81:ILE:HD13	3:C:62:GLN:HG3	1.98	0.46
3:C:527:PHE:O	3:C:531:VAL:HG23	2.15	0.46
3:C:670:GLN:O	3:C:674:MET:HG3	2.16	0.46
3:C:565:PHE:O	3:C:569:HIS:HD2	1.98	0.46
3:C:207:SER:O	3:C:211:VAL:HG23	2.16	0.45
3:C:132:GLN:HG2	3:C:133:ASN:N	2.31	0.45
1:A:179:MET:CE	2:B:133:LYS:HG2	2.46	0.45
3:C:983:GLN:HE21	3:C:983:GLN:HB2	1.56	0.45
1:A:159:LYS:HB2	1:A:160:PRO:HD3	2.00	0.44
3:C:1007:THR:H	3:C:1010:GLN:HE21	1.64	0.44
3:C:142:ILE:CD1	3:C:192[B]:GLN:HB3	2.48	0.44
3:C:250:ALA:HB3	10:C:1675:HOH:O	2.18	0.44
3:C:539:CYS:HB2	3:C:551:VAL:HG11	2.00	0.43
3:C:583:PHE:O	3:C:586:GLU:HB2	2.18	0.43
1:A:76[A]:ARG:NH2	3:C:73:LYS:HD3	2.34	0.43
3:C:651:ILE:O	3:C:654:GLU:HB2	2.18	0.43
1:A:216:LEU:CD2	2:B:177:ARG:NE	2.54	0.43
3:C:1024:ASP:OD1	3:C:1026:VAL:HG12	2.18	0.43
1:A:118:VAL:HG22	1:A:163:TRP:CE3	2.54	0.43
3:C:195:LYS:HG2	3:C:199:GLN:HE21	1.83	0.43
2:B:85:VAL:HG22	2:B:114:LEU:CD2	2.49	0.43
3:C:1021:GLN:CD	3:C:1027:VAL:HG12	2.39	0.43
2:B:106:ARG:NH2	2:B:166:GLU:HG2	2.34	0.42
3:C:136:GLU:OE1	3:C:136:GLU:HA	2.19	0.42
3:C:1014:PHE:CE1	3:C:1035:PHE:HB2	2.54	0.42
1:A:155:TYR:OH	3:C:458:GLU:OE2	2.25	0.42
3:C:785[A]:LYS:HD2	3:C:786:VAL:HG23	2.01	0.42
3:C:890:CYS:O	3:C:893:PHE:HB2	2.18	0.42
3:C:356:ARG:HD3	3:C:464:LEU:HD22	2.02	0.41
1:A:31:LEU:HD11	1:A:48:HIS:CG	2.55	0.41
1:A:117:ILE:HB	1:A:144:LEU:HD22	2.02	0.41
2:B:97:ASP:O	2:B:100:ALA:O	2.38	0.41
3:C:1:MET:HB3	3:C:37:ILE:HD13	2.02	0.41
3:C:23:PHE:CE1	3:C:35:GLN:HG2	2.55	0.41
3:C:906:GLN:HB2	3:C:954:LYS:HZ1	1.86	0.41
3:C:934:ILE:O	3:C:938:GLU:HG2	2.20	0.41
2:B:186:LYS:HA	2:B:186:LYS:HD3	1.90	0.41
1:A:85:CYS:HB2	1:A:164:LEU:HD22	2.04	0.40
3:C:138:ILE:HD13	3:C:138:ILE:HA	1.95	0.40
3:C:293[A]:VAL:HG11	3:C:345:GLN:HB3	2.03	0.40
1:A:81:ILE:HD11	3:C:65:PHE:CG	2.56	0.40

Continued on next page...

Continued from previous page...

Atom-1	Atom-2	Interatomic distance (Å)	Clash overlap (Å)
3:C:978:GLU:OE1	3:C:978:GLU:CA	2.69	0.40
3:C:574:ARG:HD2	10:C:1855:HOH:O	2.20	0.40

There are no symmetry-related clashes.

5.3 Torsion angles [i](#)

5.3.1 Protein backbone [i](#)

In the following table, the Percentiles column shows the percent Ramachandran outliers of the chain as a percentile score with respect to all X-ray entries followed by that with respect to entries of similar resolution.

The Analysed column shows the number of residues for which the backbone conformation was analysed, and the total number of residues.

Mol	Chain	Analysed	Favoured	Allowed	Outliers	Percentiles	
1	A	213/216 (99%)	206 (97%)	6 (3%)	1 (0%)	25	17
2	B	120/140 (86%)	114 (95%)	6 (5%)	0	100	100
3	C	1040/1023 (102%)	1023 (98%)	17 (2%)	0	100	100
All	All	1373/1379 (100%)	1343 (98%)	29 (2%)	1 (0%)	48	44

All (1) Ramachandran outliers are listed below:

Mol	Chain	Res	Type
1	A	9	VAL

5.3.2 Protein sidechains [i](#)

In the following table, the Percentiles column shows the percent sidechain outliers of the chain as a percentile score with respect to all X-ray entries followed by that with respect to entries of similar resolution.

The Analysed column shows the number of residues for which the sidechain conformation was analysed, and the total number of residues.

Mol	Chain	Analysed	Rotameric	Outliers	Percentiles	
1	A	187/185 (101%)	182 (97%)	5 (3%)	40	35
2	B	105/122 (86%)	103 (98%)	2 (2%)	52	50

Continued on next page...

Continued from previous page...

Mol	Chain	Analysed	Rotameric	Outliers	Percentiles	
3	C	951/932 (102%)	932 (98%)	19 (2%)	50	47
All	All	1243/1239 (100%)	1217 (98%)	26 (2%)	48	45

All (26) residues with a non-rotameric sidechain are listed below:

Mol	Chain	Res	Type
1	A	8	GLN
1	A	179	MET
1	A	182	LEU
1	A	190	ASP
1	A	202	GLU
2	B	157	VAL
2	B	186	LYS
3	C	35	GLN
3	C	206	SER
3	C	207	SER
3	C	291	MET
3	C	545	LYS
3	C	607	LYS
3	C	628	ASP
3	C	679	ILE
3	C	688	THR
3	C	689	LEU
3	C	690	LEU
3	C	694	GLU
3	C	883	LYS
3	C	940	PHE
3	C	978	GLU
3	C	980	GLU
3	C	981	VAL
3	C	983	GLN
3	C	992	SER

Sometimes sidechains can be flipped to improve hydrogen bonding and reduce clashes. All (13) such sidechains are listed below:

Mol	Chain	Res	Type
1	A	48	HIS
1	A	62	ASN
3	C	30	GLN
3	C	56	GLN
3	C	84	ASN

Continued on next page...

Continued from previous page...

Mol	Chain	Res	Type
3	C	173	GLN
3	C	199	GLN
3	C	494	GLN
3	C	541	GLN
3	C	569	HIS
3	C	813	ASN
3	C	983	GLN
3	C	1010	GLN

5.3.3 RNA [i](#)

There are no RNA molecules in this entry.

5.4 Non-standard residues in protein, DNA, RNA chains [i](#)

There are no non-standard protein/DNA/RNA residues in this entry.

5.5 Carbohydrates [i](#)

There are no oligosaccharides in this entry.

5.6 Ligand geometry [i](#)

Of 10 ligands modelled in this entry, 5 are monoatomic - leaving 5 for Mogul analysis.

In the following table, the Counts columns list the number of bonds (or angles) for which Mogul statistics could be retrieved, the number of bonds (or angles) that are observed in the model and the number of bonds (or angles) that are defined in the Chemical Component Dictionary. The Link column lists molecule types, if any, to which the group is linked. The Z score for a bond length (or angle) is the number of standard deviations the observed value is removed from the expected value. A bond length (or angle) with $|Z| > 2$ is considered an outlier worth inspection. RMSZ is the root-mean-square of all Z scores of the bond lengths (or angles).

Mol	Type	Chain	Res	Link	Bond lengths			Bond angles		
					Counts	RMSZ	$\# Z > 2$	Counts	RMSZ	$\# Z > 2$
6	EDO	A	303	-	3,3,3	0.45	0	2,2,2	0.28	0
8	GOL	C	1102	-	5,5,5	0.38	0	5,5,5	0.38	0
6	EDO	C	1103	-	3,3,3	0.52	0	2,2,2	0.07	0
4	GNP	A	301	5	29,34,34	1.49	4 (13%)	33,54,54	1.92	8 (24%)
7	LMB	C	1101	3	37,39,39	0.97	3 (8%)	43,51,51	1.19	5 (11%)

In the following table, the Chirals column lists the number of chiral outliers, the number of chiral centers analysed, the number of these observed in the model and the number defined in the Chemical Component Dictionary. Similar counts are reported in the Torsion and Rings columns. '-' means no outliers of that kind were identified.

Mol	Type	Chain	Res	Link	Chirals	Torsions	Rings
6	EDO	A	303	-	-	0/1/1/1	-
8	GOL	C	1102	-	-	2/4/4/4	-
6	EDO	C	1103	-	-	1/1/1/1	-
4	GNP	A	301	5	-	2/14/38/38	0/3/3/3
7	LMB	C	1101	3	-	5/54/54/54	-

All (7) bond length outliers are listed below:

Mol	Chain	Res	Type	Atoms	Z	Observed(Å)	Ideal(Å)
4	A	301	GNP	C5-C6	3.51	1.47	1.41
4	A	301	GNP	PG-N3B	3.46	1.72	1.63
4	A	301	GNP	PB-N3B	3.40	1.72	1.63
7	C	1101	LMB	C16-C17	-2.46	1.50	1.53
7	C	1101	LMB	C7-C8	2.25	1.49	1.45
4	A	301	GNP	O4'-C1'	2.13	1.43	1.40
7	C	1101	LMB	O5-C24	-2.05	1.25	1.30

All (13) bond angle outliers are listed below:

Mol	Chain	Res	Type	Atoms	Z	Observed(°)	Ideal(°)
4	A	301	GNP	C2-N1-C6	5.31	123.34	115.96
4	A	301	GNP	N3-C2-N1	-3.95	122.19	127.21
4	A	301	GNP	C5-C6-N1	-3.85	118.27	123.42
4	A	301	GNP	C2-N3-C4	3.77	119.55	115.48
4	A	301	GNP	C4-C5-C6	-3.64	115.67	121.23
4	A	301	GNP	O1G-PG-N3B	-3.48	106.65	111.77
7	C	1101	LMB	C11-C12-C13	-2.91	119.63	125.93
7	C	1101	LMB	C6-C7-C8	-2.45	121.11	126.12
4	A	301	GNP	C1'-N9-C4	-2.09	122.97	126.64
7	C	1101	LMB	C22-C23-C24	-2.05	123.33	126.94
7	C	1101	LMB	C5-C6-C7	-2.04	121.93	125.39
4	A	301	GNP	O2A-PA-O1A	2.01	121.79	112.44
7	C	1101	LMB	C7-C8-C9	2.01	124.20	118.82

There are no chirality outliers.

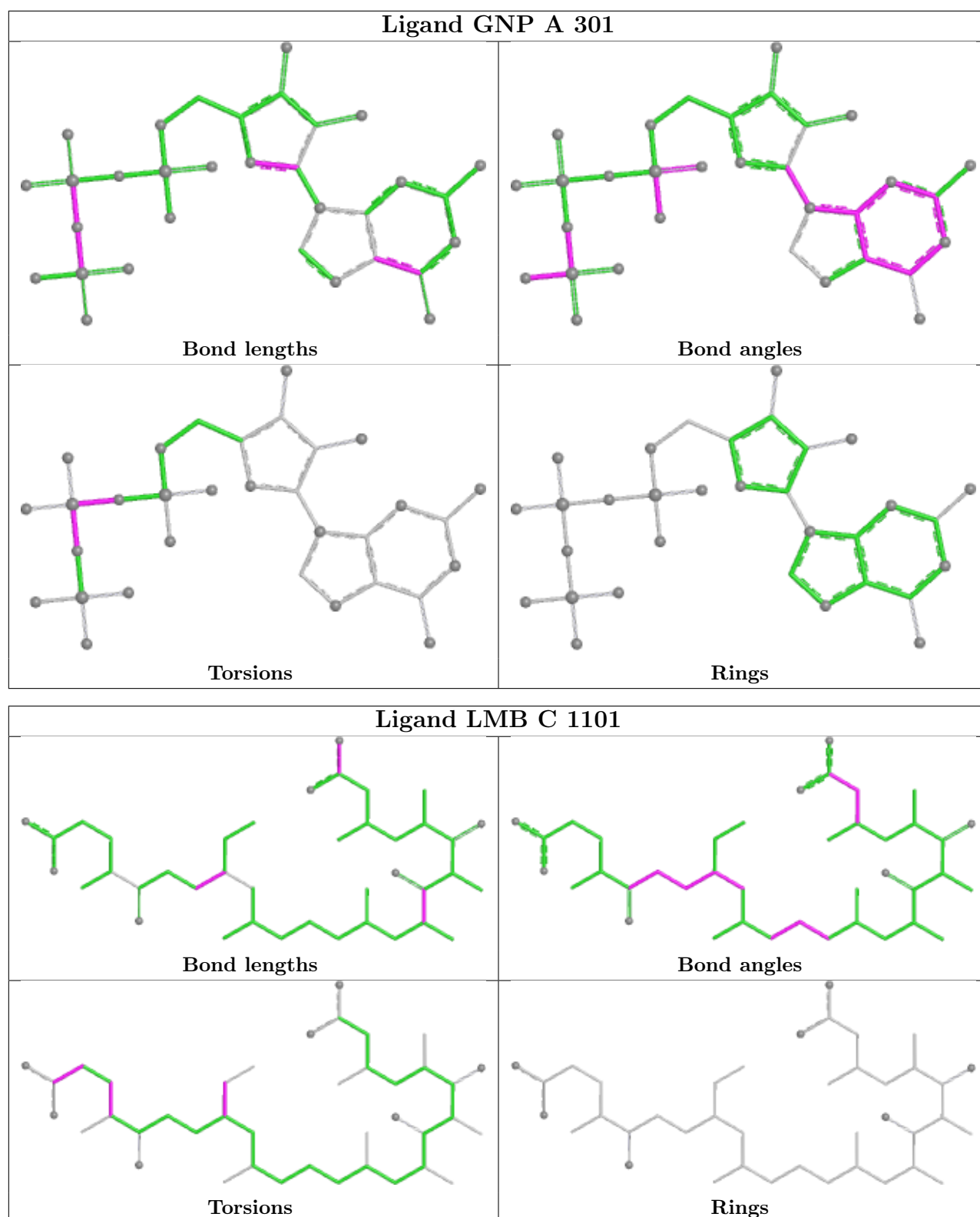
All (10) torsion outliers are listed below:

Mol	Chain	Res	Type	Atoms
4	A	301	GNP	PG-N3B-PB-O1B
7	C	1101	LMB	C2-C3-C4-C5
8	C	1102	GOL	C1-C2-C3-O3
8	C	1102	GOL	O2-C2-C3-O3
7	C	1101	LMB	C2-C3-C4-C25
7	C	1101	LMB	C27-C26-C8-C9
7	C	1101	LMB	O1-C1-C2-C3
7	C	1101	LMB	O1'-C1-C2-C3
6	C	1103	EDO	O1-C1-C2-O2
4	A	301	GNP	PA-O3A-PB-O1B

There are no ring outliers.

No monomer is involved in short contacts.

The following is a two-dimensional graphical depiction of Mogul quality analysis of bond lengths, bond angles, torsion angles, and ring geometry for all instances of the Ligand of Interest. In addition, ligands with molecular weight > 250 and outliers as shown on the validation Tables will also be included. For torsion angles, if less than 5% of the Mogul distribution of torsion angles is within 10 degrees of the torsion angle in question, then that torsion angle is considered an outlier. Any bond that is central to one or more torsion angles identified as an outlier by Mogul will be highlighted in the graph. For rings, the root-mean-square deviation (RMSD) between the ring in question and similar rings identified by Mogul is calculated over all ring torsion angles. If the average RMSD is greater than 60 degrees and the minimal RMSD between the ring in question and any Mogul-identified rings is also greater than 60 degrees, then that ring is considered an outlier. The outliers are highlighted in purple. The color gray indicates Mogul did not find sufficient equivalents in the CSD to analyse the geometry.



5.7 Other polymers ⓘ

There are no such residues in this entry.

5.8 Polymer linkage issues ⓘ

There are no chain breaks in this entry.

6 Fit of model and data

6.1 Protein, DNA and RNA chains

In the following table, the column labelled ‘#RSRZ > 2’ contains the number (and percentage) of RSRZ outliers, followed by percent RSRZ outliers for the chain as percentile scores relative to all X-ray entries and entries of similar resolution. The OWAB column contains the minimum, median, 95th percentile and maximum values of the occupancy-weighted average B-factor per residue. The column labelled ‘Q < 0.9’ lists the number of (and percentage) of residues with an average occupancy less than 0.9.

Mol	Chain	Analysed	<RSRZ>	#RSRZ>2	OWAB(Å ²)	Q<0.9
1	A	209/216 (96%)	-0.18	11 (5%) 33 35	11, 26, 61, 80	6 (2%)
2	B	121/140 (86%)	-0.07	0 100 100	23, 35, 51, 71	1 (0%)
3	C	1017/1023 (99%)	-0.34	12 (1%) 76 79	11, 28, 52, 81	25 (2%)
All	All	1347/1379 (97%)	-0.29	23 (1%) 69 71	11, 29, 52, 81	32 (2%)

All (23) RSRZ outliers are listed below:

Mol	Chain	Res	Type	RSRZ
1	A	197[A]	TYR	6.2
1	A	191	PRO	3.8
3	C	687	PRO	3.8
3	C	689	LEU	3.8
1	A	193	LEU	3.7
1	A	216	LEU	3.5
3	C	690	LEU	3.3
3	C	204	GLY	3.3
1	A	189	MET	3.1
3	C	262	LEU	2.9
3	C	19	VAL	2.8
1	A	188	VAL	2.8
1	A	195	ALA	2.6
3	C	57	PHE	2.6
3	C	81	LEU	2.5
1	A	213	ASP	2.4
3	C	15	LEU	2.3
3	C	-1	GLY	2.2
1	A	194	ALA	2.2
3	C	93	PHE	2.2
3	C	691	LEU	2.2
1	A	192	ALA	2.1
1	A	9	VAL	2.0

6.2 Non-standard residues in protein, DNA, RNA chains [i](#)

There are no non-standard protein/DNA/RNA residues in this entry.

6.3 Carbohydrates [i](#)

There are no monosaccharides in this entry.

6.4 Ligands [i](#)

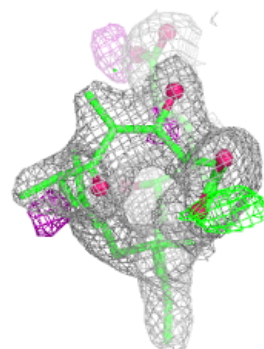
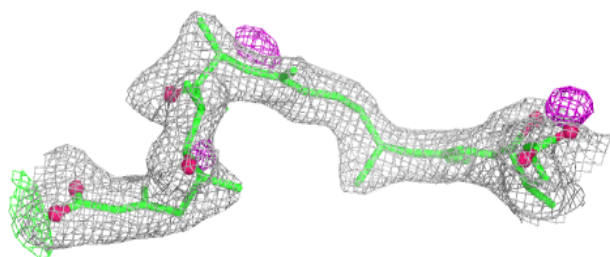
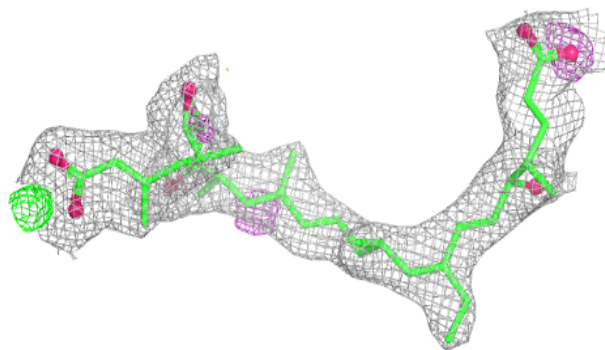
In the following table, the Atoms column lists the number of modelled atoms in the group and the number defined in the chemical component dictionary. The B-factors column lists the minimum, median, 95th percentile and maximum values of B factors of atoms in the group. The column labelled 'Q< 0.9' lists the number of atoms with occupancy less than 0.9.

Mol	Type	Chain	Res	Atoms	RSCC	RSR	B-factors(\AA^2)	Q<0.9
9	CL	C	1107	1/1	0.83	0.18	92,92,92,92	0
7	LMB	C	1101	40/40	0.84	0.10	31,35,41,43	0
8	GOL	C	1102	6/6	0.86	0.14	60,63,64,66	0
6	EDO	C	1103	4/4	0.86	0.19	73,74,75,75	0
6	EDO	A	303	4/4	0.90	0.24	62,63,65,65	0
9	CL	C	1105	1/1	0.91	0.15	64,64,64,64	0
9	CL	C	1106	1/1	0.94	0.12	78,78,78,78	0
9	CL	C	1104	1/1	0.94	0.15	72,72,72,72	0
5	MG	A	302	1/1	0.96	0.06	25,25,25,25	0
4	GNP	A	301	32/32	0.98	0.05	22,23,25,25	0

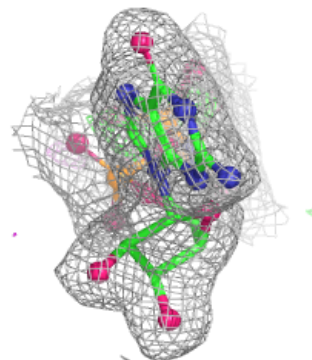
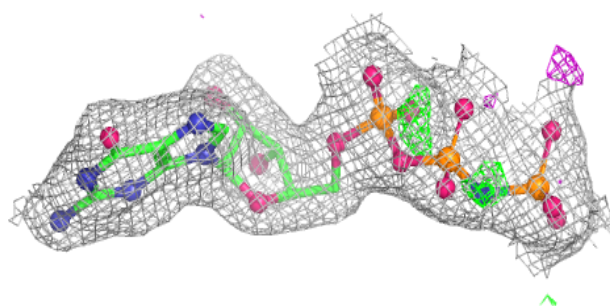
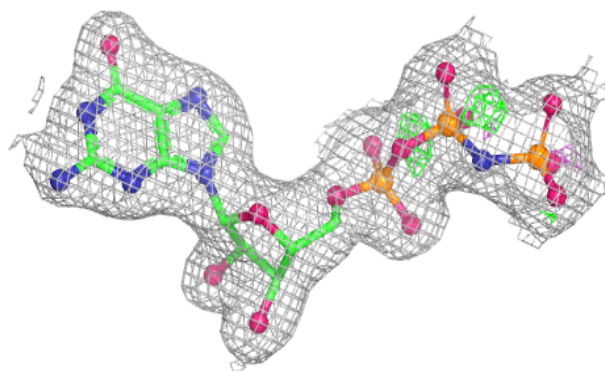
The following is a graphical depiction of the model fit to experimental electron density of all instances of the Ligand of Interest. In addition, ligands with molecular weight > 250 and outliers as shown on the geometry validation Tables will also be included. Each fit is shown from different orientation to approximate a three-dimensional view.

Electron density around LMB C 1101:

$2mF_o-DF_c$ (at 0.7 rmsd) in gray
 mF_o-DF_c (at 3 rmsd) in purple (negative)
and green (positive)

**Electron density around GNP A 301:**

$2mF_o-DF_c$ (at 0.7 rmsd) in gray
 mF_o-DF_c (at 3 rmsd) in purple (negative)
and green (positive)



6.5 Other polymers [i](#)

There are no such residues in this entry.