



wwPDB X-ray Structure Validation Summary Report ⓘ

Apr 1, 2025 – 10:47 pm BST

PDB ID : 6GXC / pdb_00006gxc
Title : Bacterial oligosaccharyltransferase PglB in complex with an inhibitory peptide and a reactive lipid-linked oligosaccharide analog
Authors : Napiorkowska, M.; Locher, K.P.; Boilevin, J.; Darbre, T.; Reymond, J.-L.
Deposited on : 2018-06-27
Resolution : 3.40 Å(reported)

This is a wwPDB X-ray Structure Validation Summary Report for a publicly released PDB entry.

We welcome your comments at validation@mail.wwpdb.org

A user guide is available at

<https://www.wwpdb.org/validation/2017/XrayValidationReportHelp>

with specific help available everywhere you see the ⓘ symbol.

The types of validation reports are described at

<http://www.wwpdb.org/validation/2017/FAQs#types>.

The following versions of software and data (see [references ⓘ](#)) were used in the production of this report:

MolProbity	:	4.02b-467
Mogul	:	1.8.4, CSD as541be (2020)
Xtriage (Phenix)	:	1.13
EDS	:	3.0
buster-report	:	1.1.7 (2018)
Percentile statistics	:	20231227.v01 (using entries in the PDB archive December 27th 2023)
CCP4	:	9.0.003 (Gargrove)
Density-Fitness	:	1.0.11
Ideal geometry (proteins)	:	Engh & Huber (2001)
Ideal geometry (DNA, RNA)	:	Parkinson et al. (1996)
Validation Pipeline (wwPDB-VP)	:	2.42

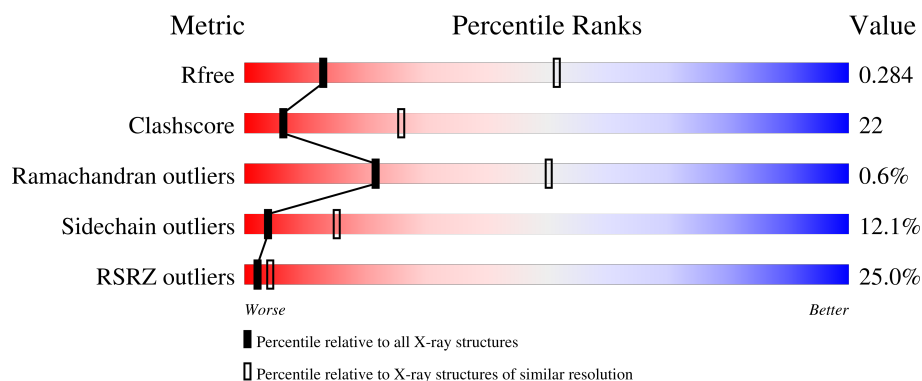
1 Overall quality at a glance

The following experimental techniques were used to determine the structure:

X-RAY DIFFRACTION

The reported resolution of this entry is 3.40 Å.

Percentile scores (ranging between 0-100) for global validation metrics of the entry are shown in the following graphic. The table shows the number of entries on which the scores are based.



Metric	Whole archive (#Entries)	Similar resolution (#Entries, resolution range(Å))
R_{free}	164625	1140 (3.46-3.34)
Clashscore	180529	1172 (3.46-3.34)
Ramachandran outliers	177936	1172 (3.46-3.34)
Sidechain outliers	177891	1172 (3.46-3.34)
RSRZ outliers	164620	1140 (3.46-3.34)

The table below summarises the geometric issues observed across the polymeric chains and their fit to the electron density. The red, orange, yellow and green segments of the lower bar indicate the fraction of residues that contain outliers for ≥ 3 , 2, 1 and 0 types of geometric quality criteria respectively. A grey segment represents the fraction of residues that are not modelled. The numeric value for each fraction is indicated below the corresponding segment, with a dot representing fractions $\leq 5\%$. The upper red bar (where present) indicates the fraction of residues that have poor fit to the electron density. The numeric value is given above the bar.

Mol	Chain	Length	Quality of chain
1	A	724	<div> <div>24%</div> <div>59%</div> <div>32%</div> <div>6%</div> <div>..</div> </div>
2	B	8	<div> <div>12%</div> <div>50%</div> <div>25%</div> <div>25%</div> </div>

The following table lists non-polymeric compounds, carbohydrate monomers and non-standard residues in protein, DNA, RNA chains that are outliers for geometric or electron-density-fit criteria:

Mol	Type	Chain	Res	Chirality	Geometry	Clashes	Electron density
7	FFK	A	806	-	-	-	X

2 Entry composition

There are 7 unique types of molecules in this entry. The entry contains 5931 atoms, of which 0 are hydrogens and 0 are deuteriums.

In the tables below, the ZeroOcc column contains the number of atoms modelled with zero occupancy, the AltConf column contains the number of residues with at least one atom in alternate conformation and the Trace column contains the number of residues modelled with at most 2 atoms.

- Molecule 1 is a protein called Undecaprenyl-diphosphooligosaccharide--protein glycotransferase.

Mol	Chain	Residues	Atoms					ZeroOcc	AltConf	Trace
1	A	706	Total	C	N	O	S	0	0	0
			5808	3867	885	1031	25			

There are 36 discrepancies between the modelled and reference sequences:

Chain	Residue	Modelled	Actual	Comment	Reference
A	2	GLU	LYS	engineered mutation	UNP B9KDD4
A	17	ALA	CYS	engineered mutation	UNP B9KDD4
A	30	ALA	CYS	engineered mutation	UNP B9KDD4
A	108	THR	ALA	engineered mutation	UNP B9KDD4
A	350	LEU	CYS	engineered mutation	UNP B9KDD4
A	535	GLN	ASN	engineered mutation	UNP B9KDD4
A	549	PRO	LYS	engineered mutation	UNP B9KDD4
A	550	ASN	ASP	engineered mutation	UNP B9KDD4
A	553	ILE	PHE	engineered mutation	UNP B9KDD4
A	556	PRO	ASN	engineered mutation	UNP B9KDD4
A	600	PRO	ALA	engineered mutation	UNP B9KDD4
A	601	LEU	ILE	engineered mutation	UNP B9KDD4
A	602	ASP	ALA	engineered mutation	UNP B9KDD4
A	606	LYS	THR	engineered mutation	UNP B9KDD4
A	607	GLN	THR	engineered mutation	UNP B9KDD4
A	610	ILE	VAL	engineered mutation	UNP B9KDD4
A	611	THR	MET	engineered mutation	UNP B9KDD4
A	619	SER	ILE	engineered mutation	UNP B9KDD4
A	622	TYR	PHE	engineered mutation	UNP B9KDD4
A	624	SER	ALA	engineered mutation	UNP B9KDD4
A	627	ILE	VAL	engineered mutation	UNP B9KDD4
A	630	ASN	ALA	engineered mutation	UNP B9KDD4
A	663	TYR	PHE	engineered mutation	UNP B9KDD4
A	670	TYR	PHE	engineered mutation	UNP B9KDD4
A	713	GLU	-	expression tag	UNP B9KDD4
A	714	PHE	-	expression tag	UNP B9KDD4

Continued on next page...

Continued from previous page...

Chain	Residue	Modelled	Actual	Comment	Reference
A	715	HIS	-	expression tag	UNP B9KDD4
A	716	HIS	-	expression tag	UNP B9KDD4
A	717	HIS	-	expression tag	UNP B9KDD4
A	718	HIS	-	expression tag	UNP B9KDD4
A	719	HIS	-	expression tag	UNP B9KDD4
A	720	HIS	-	expression tag	UNP B9KDD4
A	721	HIS	-	expression tag	UNP B9KDD4
A	722	HIS	-	expression tag	UNP B9KDD4
A	723	HIS	-	expression tag	UNP B9KDD4
A	724	HIS	-	expression tag	UNP B9KDD4

- Molecule 2 is a protein called GLY-ASP-GLN-DAB-ALA-THR-PPN-GLY.

Mol	Chain	Residues	Atoms				ZeroOcc	AltConf	Trace
2	B	8	Total	C	N	O	5	0	0
			58	33	11	14			

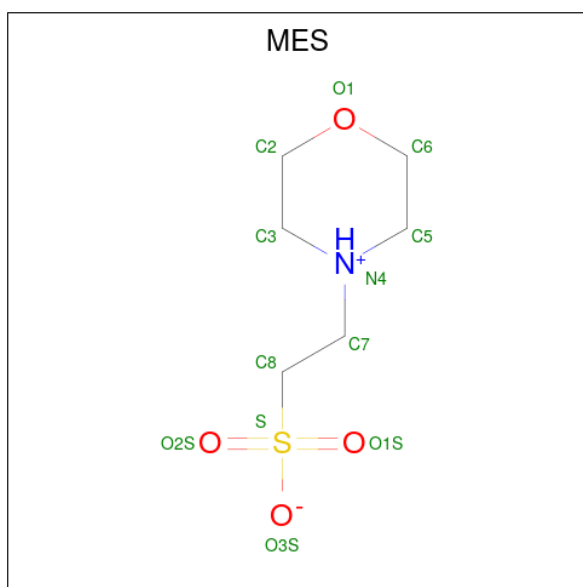
- Molecule 3 is MANGANESE (II) ION (CCD ID: MN) (formula: Mn).

Mol	Chain	Residues	Atoms		ZeroOcc	AltConf
3	A	2	Total	Mn	0	0
			2	2		

- Molecule 4 is SODIUM ION (CCD ID: NA) (formula: Na).

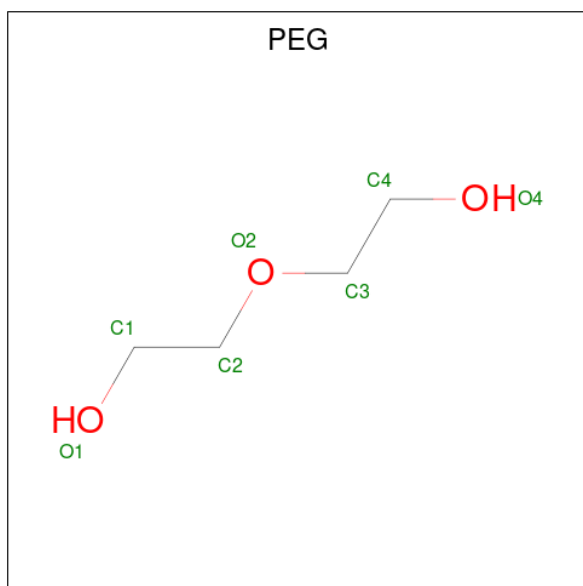
Mol	Chain	Residues	Atoms		ZeroOcc	AltConf
4	A	1	Total	Na	0	0
			1	1		

- Molecule 5 is 2-(N-MORPHOLINO)-ETHANESULFONIC ACID (CCD ID: MES) (formula: C₆H₁₃NO₄S).



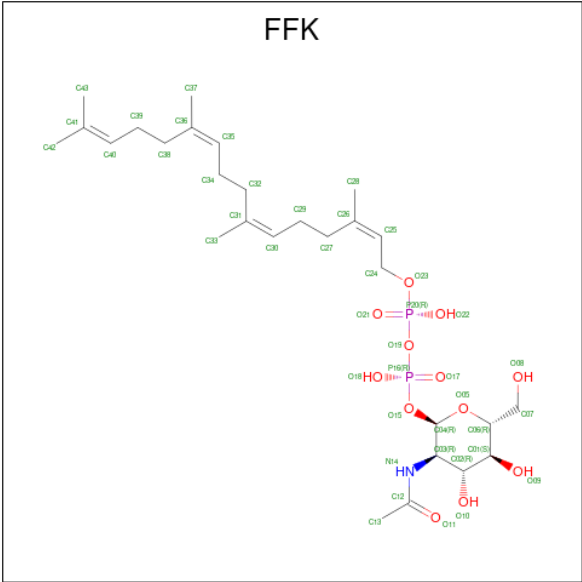
Mol	Chain	Residues	Atoms					ZeroOcc	AltConf
5	A	1	Total	C	N	O	S	0	0
			12	6	1	4	1		

- Molecule 6 is DI(HYDROXYETHYL)ETHER (CCD ID: PEG) (formula: $C_4H_{10}O_3$).



Mol	Chain	Residues	Atoms			ZeroOcc	AltConf
6	A	1	Total	C	O	0	0
			7	4	3		

- Molecule 7 is [(2 {R},3 {R},4 {R},5 {S},6 {R})-3-acetamido-6-(hydroxymethyl)-4,5-bis(oxidanyl)oxan-2-yl] [oxidanyl-[(2 {Z},6 {Z},10 {Z})-3,7,11,15-tetramethylhexadeca-2,6,10,14-tetraenoxy]phosphoryl] hydrogen phosphate (CCD ID: FFK) (formula: $C_{28}H_{49}NO_{12}P_2$).

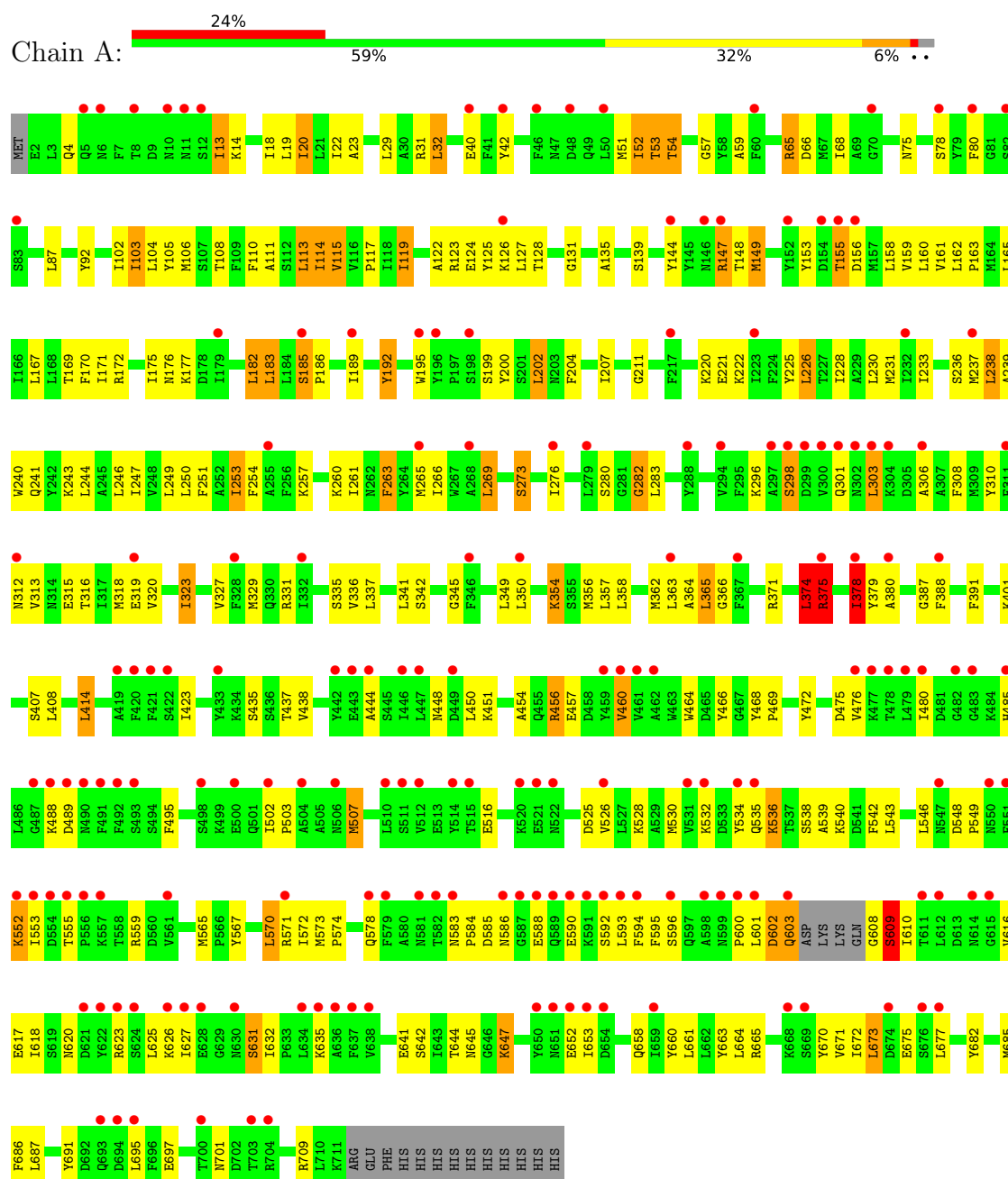


Mol	Chain	Residues	Atoms					ZeroOcc	AltConf
7	A	1	Total	C	N	O	P	0	0
			43	28	1	12	2		

3 Residue-property plots

These plots are drawn for all protein, RNA, DNA and oligosaccharide chains in the entry. The first graphic for a chain summarises the proportions of the various outlier classes displayed in the second graphic. The second graphic shows the sequence view annotated by issues in geometry and electron density. Residues are color-coded according to the number of geometric quality criteria for which they contain at least one outlier: green = 0, yellow = 1, orange = 2 and red = 3 or more. A red dot above a residue indicates a poor fit to the electron density ($RSRZ > 2$). Stretches of 2 or more consecutive residues without any outlier are shown as a green connector. Residues present in the sample, but not in the model, are shown in grey.

- Molecule 1: Undecaprenyl-diphosphooligosaccharide--protein glycotransferase



- Molecule 2: GLY-ASP-GLN-DAB-ALA-THR-PPN-GLY

Chain B: 



4 Data and refinement statistics

Property	Value	Source
Space group	P 21 21 21	Depositor
Cell constants a, b, c, α , β , γ	83.81Å 116.54Å 173.89Å 90.00° 90.00° 90.00°	Depositor
Resolution (Å)	41.09 – 3.40 41.09 – 3.40	Depositor EDS
% Data completeness (in resolution range)	92.1 (41.09-3.40) 92.1 (41.09-3.40)	Depositor EDS
R_{merge}	(Not available)	Depositor
R_{sym}	(Not available)	Depositor
$\langle I/\sigma(I) \rangle$ ¹	2.01 (at 3.40Å)	Xtriage
Refinement program	PHENIX v1.12	Depositor
R, R_{free}	0.249 , 0.283 0.254 , 0.284	Depositor DCC
R_{free} test set	20192 reflections (9.01%)	wwPDB-VP
Wilson B-factor (Å ²)	120.0	Xtriage
Anisotropy	0.025	Xtriage
Bulk solvent k_{sol} (e/Å ³), B_{sol} (Å ²)	0.22 , 21.3	EDS
L-test for twinning ²	$\langle L \rangle = 0.48$, $\langle L^2 \rangle = 0.31$	Xtriage
Estimated twinning fraction	No twinning to report.	Xtriage
F_o, F_c correlation	0.83	EDS
Total number of atoms	5931	wwPDB-VP
Average B, all atoms (Å ²)	110.0	wwPDB-VP

Xtriage's analysis on translational NCS is as follows: *The largest off-origin peak in the Patterson function is 4.06% of the height of the origin peak. No significant pseudotranslation is detected.*

¹Intensities estimated from amplitudes.

²Theoretical values of $\langle |L| \rangle$, $\langle L^2 \rangle$ for acentric reflections are 0.5, 0.333 respectively for untwinned datasets, and 0.375, 0.2 for perfectly twinned datasets.

5 Model quality [i](#)

5.1 Standard geometry [i](#)

Bond lengths and bond angles in the following residue types are not validated in this section: FFK, DAB, MES, NA, MN, PPN, PEG

The Z score for a bond length (or angle) is the number of standard deviations the observed value is removed from the expected value. A bond length (or angle) with $|Z| > 5$ is considered an outlier worth inspection. RMSZ is the root-mean-square of all Z scores of the bond lengths (or angles).

Mol	Chain	Bond lengths		Bond angles	
		RMSZ	$\# Z > 5$	RMSZ	$\# Z > 5$
1	A	0.44	0/5962	0.64	1/8084 (0.0%)
2	B	0.46	0/34	0.57	0/41
All	All	0.44	0/5996	0.64	1/8125 (0.0%)

Chiral center outliers are detected by calculating the chiral volume of a chiral center and verifying if the center is modelled as a planar moiety or with the opposite hand. A planarity outlier is detected by checking planarity of atoms in a peptide group, atoms in a mainchain group or atoms of a sidechain that are expected to be planar.

Mol	Chain	#Chirality outliers	#Planarity outliers
1	A	0	1

There are no bond length outliers.

All (1) bond angle outliers are listed below:

Mol	Chain	Res	Type	Atoms	Z	Observed($^{\circ}$)	Ideal($^{\circ}$)
1	A	374	LEU	CA-CB-CG	5.97	129.02	115.30

There are no chirality outliers.

All (1) planarity outliers are listed below:

Mol	Chain	Res	Type	Group
1	A	75	ASN	Peptide

5.2 Too-close contacts [i](#)

In the following table, the Non-H and H(model) columns list the number of non-hydrogen atoms and hydrogen atoms in the chain respectively. The H(added) column lists the number of hydrogen atoms added and optimized by MolProbity. The Clashes column lists the number of clashes within

the asymmetric unit, whereas Symm-Clashes lists symmetry-related clashes.

Mol	Chain	Non-H	H(model)	H(added)	Clashes	Symm-Clashes
1	A	5808	0	5843	255	1
2	B	58	0	44	6	0
3	A	2	0	0	0	0
4	A	1	0	0	0	0
5	A	12	0	12	4	0
6	A	7	0	10	0	0
7	A	43	0	0	2	0
All	All	5931	0	5909	255	1

The all-atom clashscore is defined as the number of clashes found per 1000 atoms (including hydrogen atoms). The all-atom clashscore for this structure is 22.

The worst 5 of 255 close contacts within the same asymmetric unit are listed below, sorted by their clash magnitude.

Atom-1	Atom-2	Interatomic distance (Å)	Clash overlap (Å)
1:A:296:LYS:HD3	1:A:371:ARG:HH21	1.21	1.05
1:A:31:ARG:HG3	1:A:108:THR:HG23	1.45	0.99
1:A:609:SER:N	1:A:620:ASN:OD1	1.97	0.97
1:A:20:ILE:HG13	1:A:119:ILE:HD11	1.43	0.96
1:A:240:TRP:HB3	5:A:804:MES:H82	1.51	0.91

All (1) symmetry-related close contacts are listed below. The label for Atom-2 includes the symmetry operator and encoded unit-cell translations to be applied.

Atom-1	Atom-2	Interatomic distance (Å)	Clash overlap (Å)
1:A:42:TYR:OH	1:A:586:ASN:ND2[4_557]	2.19	0.01

5.3 Torsion angles [i](#)

5.3.1 Protein backbone [i](#)

In the following table, the Percentiles column shows the percent Ramachandran outliers of the chain as a percentile score with respect to all X-ray entries followed by that with respect to entries of similar resolution.

The Analysed column shows the number of residues for which the backbone conformation was analysed, and the total number of residues.

Mol	Chain	Analysed	Favoured	Allowed	Outliers	Percentiles	
1	A	702/724 (97%)	653 (93%)	45 (6%)	4 (1%)	22	50
2	B	4/8 (50%)	4 (100%)	0	0	100	100
All	All	706/732 (96%)	657 (93%)	45 (6%)	4 (1%)	22	50

All (4) Ramachandran outliers are listed below:

Mol	Chain	Res	Type
1	A	609	SER
1	A	282	GLY
1	A	375	ARG
1	A	378	ILE

5.3.2 Protein sidechains ⓘ

In the following table, the Percentiles column shows the percent sidechain outliers of the chain as a percentile score with respect to all X-ray entries followed by that with respect to entries of similar resolution.

The Analysed column shows the number of residues for which the sidechain conformation was analysed, and the total number of residues.

Mol	Chain	Analysed	Rotameric	Outliers	Percentiles	
1	A	632/650 (97%)	556 (88%)	76 (12%)	4	16
2	B	3/3 (100%)	2 (67%)	1 (33%)	0	0
All	All	635/653 (97%)	558 (88%)	77 (12%)	4	15

5 of 77 residues with a non-rotameric sidechain are listed below:

Mol	Chain	Res	Type
1	A	507	MET
1	A	632	ILE
1	A	536	LYS
1	A	592	SER
1	A	673	LEU

Sometimes sidechains can be flipped to improve hydrogen bonding and reduce clashes. All (1) such sidechains are listed below:

Mol	Chain	Res	Type
1	A	586	ASN

5.3.3 RNA ⓘ

There are no RNA molecules in this entry.

5.4 Non-standard residues in protein, DNA, RNA chains ⓘ

2 non-standard protein/DNA/RNA residues are modelled in this entry.

In the following table, the Counts columns list the number of bonds (or angles) for which Mogul statistics could be retrieved, the number of bonds (or angles) that are observed in the model and the number of bonds (or angles) that are defined in the Chemical Component Dictionary. The Link column lists molecule types, if any, to which the group is linked. The Z score for a bond length (or angle) is the number of standard deviations the observed value is removed from the expected value. A bond length (or angle) with $|Z| > 2$ is considered an outlier worth inspection. RMSZ is the root-mean-square of all Z scores of the bond lengths (or angles).

Mol	Type	Chain	Res	Link	Bond lengths			Bond angles		
					Counts	RMSZ	$\# Z > 2$	Counts	RMSZ	$\# Z > 2$
2	PPN	B	16	2	12,14,15	1.02	0	13,18,20	1.13	2 (15%)
2	DAB	B	13	2	5,6,7	0.87	0	1,6,8	0.50	0

In the following table, the Chirals column lists the number of chiral outliers, the number of chiral centers analysed, the number of these observed in the model and the number defined in the Chemical Component Dictionary. Similar counts are reported in the Torsion and Rings columns. '-' means no outliers of that kind were identified.

Mol	Type	Chain	Res	Link	Chirals	Torsions	Rings
2	PPN	B	16	2	-	1/7/10/12	0/1/1/1
2	DAB	B	13	2	-	1/4/5/7	-

There are no bond length outliers.

All (2) bond angle outliers are listed below:

Mol	Chain	Res	Type	Atoms	Z	Observed(°)	Ideal(°)
2	B	16	PPN	CB-CA-C	-2.34	107.08	111.47
2	B	16	PPN	CG-CB-CA	-2.01	110.04	114.10

There are no chirality outliers.

All (2) torsion outliers are listed below:

Mol	Chain	Res	Type	Atoms
2	B	13	DAB	N-CA-CB-CG
2	B	16	PPN	N-CA-CB-CG

There are no ring outliers.

2 monomers are involved in 3 short contacts:

Mol	Chain	Res	Type	Clashes	Symm-Clashes
2	B	16	PPN	1	0
2	B	13	DAB	2	0

5.5 Carbohydrates [i](#)

There are no oligosaccharides in this entry.

5.6 Ligand geometry [i](#)

Of 6 ligands modelled in this entry, 3 are monoatomic - leaving 3 for Mogul analysis.

In the following table, the Counts columns list the number of bonds (or angles) for which Mogul statistics could be retrieved, the number of bonds (or angles) that are observed in the model and the number of bonds (or angles) that are defined in the Chemical Component Dictionary. The Link column lists molecule types, if any, to which the group is linked. The Z score for a bond length (or angle) is the number of standard deviations the observed value is removed from the expected value. A bond length (or angle) with $|Z| > 2$ is considered an outlier worth inspection. RMSZ is the root-mean-square of all Z scores of the bond lengths (or angles).

Mol	Type	Chain	Res	Link	Bond lengths			Bond angles		
					Counts	RMSZ	$\# Z > 2$	Counts	RMSZ	$\# Z > 2$
7	FFK	A	806	-	40,43,43	2.30	19 (47%)	53,59,59	1.89	17 (32%)
6	PEG	A	805	-	6,6,6	0.67	0	5,5,5	0.62	0
5	MES	A	804	-	12,12,12	2.07	1 (8%)	14,16,16	2.37	6 (42%)

In the following table, the Chirals column lists the number of chiral outliers, the number of chiral centers analysed, the number of these observed in the model and the number defined in the Chemical Component Dictionary. Similar counts are reported in the Torsion and Rings columns. '-' means no outliers of that kind were identified.

Mol	Type	Chain	Res	Link	Chirals	Torsions	Rings
7	FFK	A	806	-	-	6/41/62/62	0/1/1/1
6	PEG	A	805	-	-	3/4/4/4	-
5	MES	A	804	-	-	4/6/14/14	0/1/1/1

The worst 5 of 20 bond length outliers are listed below:

Mol	Chain	Res	Type	Atoms	Z	Observed(Å)	Ideal(Å)
5	A	804	MES	C8-S	-6.72	1.68	1.77
7	A	806	FFK	O05-C04	6.17	1.57	1.41
7	A	806	FFK	C12-N14	4.53	1.49	1.34
7	A	806	FFK	C13-C12	3.63	1.58	1.50
7	A	806	FFK	C38-C36	3.50	1.58	1.51

The worst 5 of 23 bond angle outliers are listed below:

Mol	Chain	Res	Type	Atoms	Z	Observed(°)	Ideal(°)
5	A	804	MES	C5-N4-C3	5.12	120.36	108.83
7	A	806	FFK	O05-C06-C01	4.79	118.40	109.69
7	A	806	FFK	O19-P16-O15	4.62	111.79	102.48
7	A	806	FFK	P20-O19-P16	-4.19	118.43	132.83
7	A	806	FFK	O05-C04-O15	3.89	116.46	111.36

There are no chirality outliers.

5 of 13 torsion outliers are listed below:

Mol	Chain	Res	Type	Atoms
5	A	804	MES	N4-C7-C8-S
7	A	806	FFK	O05-C04-O15-P16
6	A	805	PEG	O2-C3-C4-O4
6	A	805	PEG	O1-C1-C2-O2
7	A	806	FFK	C26-C27-C29-C30

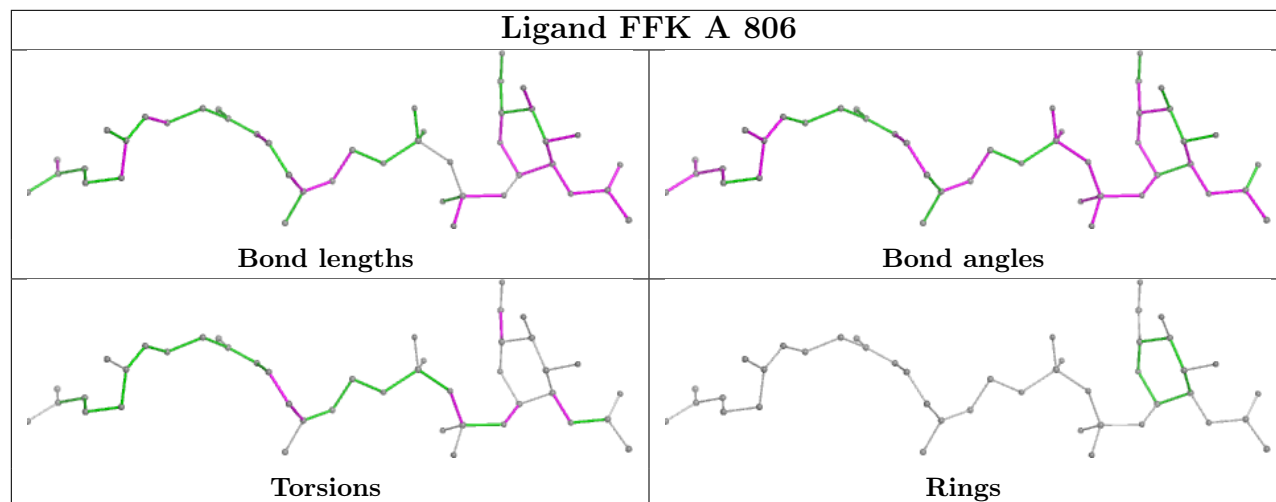
There are no ring outliers.

2 monomers are involved in 6 short contacts:

Mol	Chain	Res	Type	Clashes	Symm-Clashes
7	A	806	FFK	2	0
5	A	804	MES	4	0

The following is a two-dimensional graphical depiction of Mogul quality analysis of bond lengths, bond angles, torsion angles, and ring geometry for all instances of the Ligand of Interest. In addition, ligands with molecular weight > 250 and outliers as shown on the validation Tables will also be included. For torsion angles, if less than 5% of the Mogul distribution of torsion angles is within 10 degrees of the torsion angle in question, then that torsion angle is considered an outlier. Any bond that is central to one or more torsion angles identified as an outlier by Mogul will be highlighted in the graph. For rings, the root-mean-square deviation (RMSD) between the ring in question and similar rings identified by Mogul is calculated over all ring torsion angles. If the average RMSD is greater than 60 degrees and the minimal RMSD between the ring in question and any Mogul-identified rings is also greater than 60 degrees, then that ring is considered an outlier. The outliers are highlighted in purple. The color gray indicates Mogul did not find sufficient

equivalents in the CSD to analyse the geometry.



5.7 Other polymers [i](#)

There are no such residues in this entry.

5.8 Polymer linkage issues [i](#)

There are no chain breaks in this entry.

6 Fit of model and data [i](#)

6.1 Protein, DNA and RNA chains [i](#)

In the following table, the column labelled ‘#RSRZ > 2’ contains the number (and percentage) of RSRZ outliers, followed by percent RSRZ outliers for the chain as percentile scores relative to all X-ray entries and entries of similar resolution. The OWAB column contains the minimum, median, 95th percentile and maximum values of the occupancy-weighted average B-factor per residue. The column labelled ‘Q < 0.9’ lists the number of (and percentage) of residues with an average occupancy less than 0.9.

Mol	Chain	Analysed	<RSRZ>	#RSRZ>2	OWAB(Å ²)	Q<0.9
1	A	706/724 (97%)	1.48	177 (25%) 2 4	84, 107, 142, 174	0
2	B	6/8 (75%)	0.43	1 (16%) 5 7	23, 86, 88, 89	2 (33%)
All	All	712/732 (97%)	1.47	178 (25%) 2 4	23, 107, 142, 174	2 (0%)

The worst 5 of 178 RSRZ outliers are listed below:

Mol	Chain	Res	Type	RSRZ
1	A	554	ASP	14.2
1	A	301	GLN	13.5
1	A	552	LYS	12.5
1	A	621	ASP	12.3
1	A	590	GLU	11.9

6.2 Non-standard residues in protein, DNA, RNA chains [i](#)

In the following table, the Atoms column lists the number of modelled atoms in the group and the number defined in the chemical component dictionary. The B-factors column lists the minimum, median, 95th percentile and maximum values of B factors of atoms in the group. The column labelled ‘Q < 0.9’ lists the number of atoms with occupancy less than 0.9.

Mol	Type	Chain	Res	Atoms	RSCC	RSR	B-factors(Å ²)	Q<0.9
2	DAB	B	13	7/8	0.89	0.23	85,89,94,94	0
2	PPN	B	16	14/15	0.94	0.08	92,99,101,102	0

6.3 Carbohydrates [i](#)

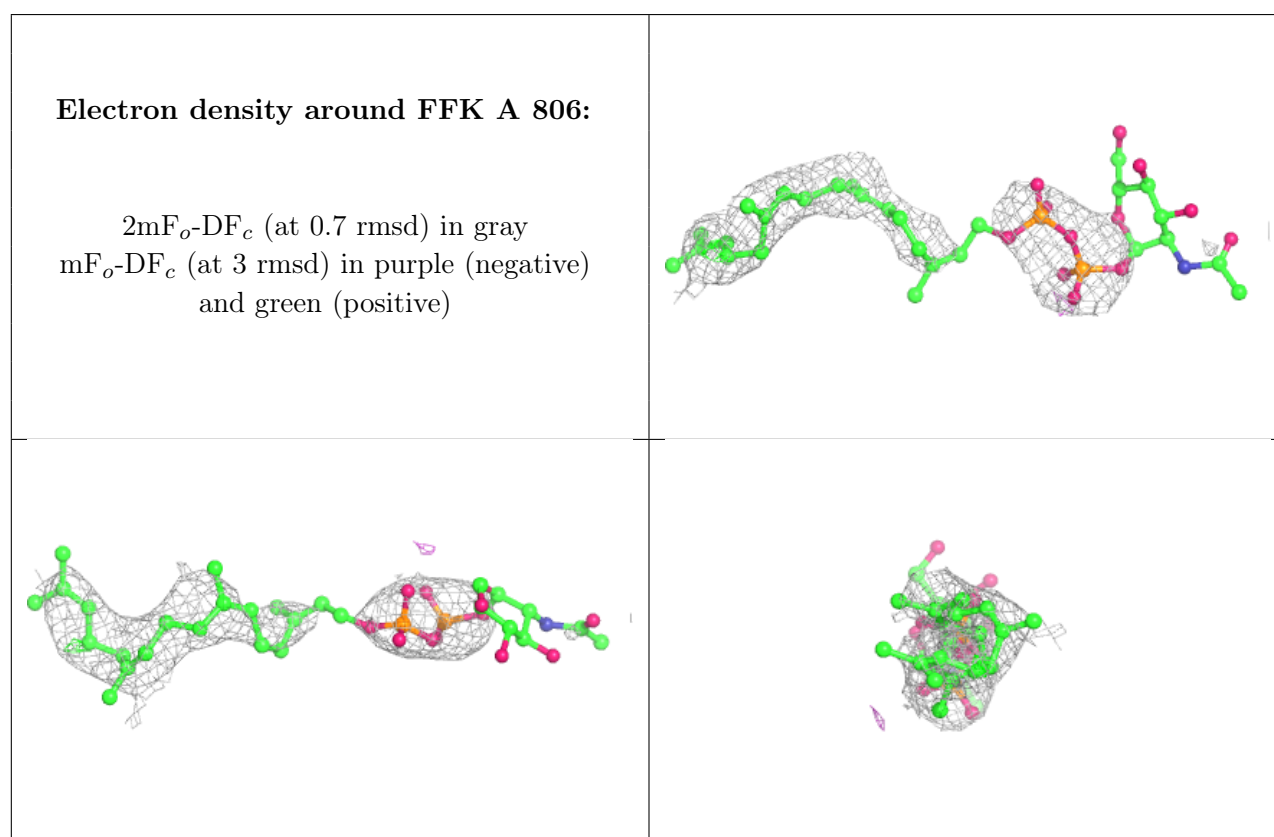
There are no monosaccharides in this entry.

6.4 Ligands [i](#)

In the following table, the Atoms column lists the number of modelled atoms in the group and the number defined in the chemical component dictionary. The B-factors column lists the minimum, median, 95th percentile and maximum values of B factors of atoms in the group. The column labelled 'Q<0.9' lists the number of atoms with occupancy less than 0.9.

Mol	Type	Chain	Res	Atoms	RSCC	RSR	B-factors(Å ²)	Q<0.9
6	PEG	A	805	7/7	0.03	0.39	114,114,114,114	0
7	FFK	A	806	43/43	0.66	0.45	85,105,105,105	43
5	MES	A	804	12/12	0.70	0.20	127,127,127,127	0
3	MN	A	802	1/1	0.80	0.29	108,108,108,108	1
4	NA	A	803	1/1	0.90	0.20	75,75,75,75	0
3	MN	A	801	1/1	0.98	0.04	92,92,92,92	0

The following is a graphical depiction of the model fit to experimental electron density of all instances of the Ligand of Interest. In addition, ligands with molecular weight > 250 and outliers as shown on the geometry validation Tables will also be included. Each fit is shown from different orientation to approximate a three-dimensional view.



6.5 Other polymers [i](#)

There are no such residues in this entry.