



wwPDB X-ray Structure Validation Summary Report ⓘ

Nov 25, 2024 – 03:02 PM EST

PDB ID : 1GQG
Title : Quercetin 2,3-dioxygenase in complex with the inhibitor diethyldithiocarbamate
Authors : Steiner, R.A.; Dijkstra, B.W.
Deposited on : 2001-11-23
Resolution : 1.70 Å(reported)

This is a wwPDB X-ray Structure Validation Summary Report for a publicly released PDB entry.

We welcome your comments at validation@mail.wwpdb.org

A user guide is available at

<https://www.wwpdb.org/validation/2017/XrayValidationReportHelp>

with specific help available everywhere you see the ⓘ symbol.

The types of validation reports are described at

<http://www.wwpdb.org/validation/2017/FAQs#types>.

The following versions of software and data (see [references ⓘ](#)) were used in the production of this report:

MolProbity	:	4.02b-467
Mogul	:	2022.3.0, CSD as543be (2022)
Xtriage (Phenix)	:	1.21
EDS	:	3.0
Percentile statistics	:	20231227.v01 (using entries in the PDB archive December 27th 2023)
CCP4	:	9.0.004 (Gargrove)
Density-Fitness	:	1.0.11
Ideal geometry (proteins)	:	Engh & Huber (2001)
Ideal geometry (DNA, RNA)	:	Parkinson et al. (1996)
Validation Pipeline (wwPDB-VP)	:	2.40

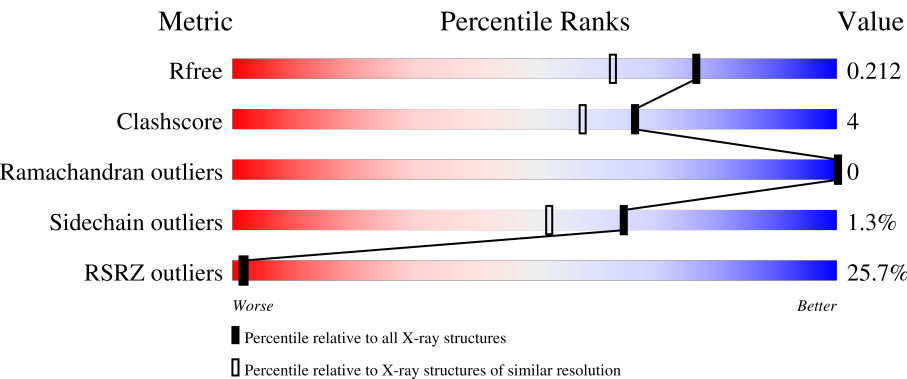
1 Overall quality at a glance i

The following experimental techniques were used to determine the structure:

X-RAY DIFFRACTION

The reported resolution of this entry is 1.70 Å.

Percentile scores (ranging between 0-100) for global validation metrics of the entry are shown in the following graphic. The table shows the number of entries on which the scores are based.




Metric	Whole archive (#Entries)	Similar resolution (#Entries, resolution range(Å))
R_{free}	164625	5161 (1.70-1.70)
Clashscore	180529	5671 (1.70-1.70)
Ramachandran outliers	177936	5594 (1.70-1.70)
Sidechain outliers	177891	5594 (1.70-1.70)
RSRZ outliers	164620	5159 (1.70-1.70)

The table below summarises the geometric issues observed across the polymeric chains and their fit to the electron density. The red, orange, yellow and green segments of the lower bar indicate the fraction of residues that contain outliers for ≥ 3 , 2, 1 and 0 types of geometric quality criteria respectively. A grey segment represents the fraction of residues that are not modelled. The numeric value for each fraction is indicated below the corresponding segment, with a dot representing fractions $\leq 5\%$

Mol	Chain	Length	Quality of chain
1	A	350	<div><div></div><div></div><div></div><div></div><div></div></div> <div>85%10%5%</div>
1	B	350	<div><div></div><div></div><div></div><div></div><div></div></div> <div>91%.5%</div>
1	C	350	<div><div></div><div></div><div></div><div></div><div></div></div> <div>91%5%</div>
1	D	350	<div><div></div><div></div><div></div><div></div><div></div></div> <div>94%89%6%5%</div>
2	E	3	<div><div></div><div></div><div></div><div></div><div></div></div> <div>33%33%33%</div>
2	F	3	<div><div></div><div></div><div></div><div></div><div></div></div> <div>67%33%</div>

Continued on next page...

Continued from previous page...

Mol	Chain	Length	Quality of chain
3	G	2	

In the tables below, the ZeroOcc column contains the number of atoms modelled with zero occupancy, the AltConf column contains the number of residues with at least one atom in alternate conformation and the Trace column contains the number of residues modelled with at most 2 atoms.

- Molecule 1 is a protein called QUERCETIN 2,3-DIOXYGENASE.

Mol	Chain	Residues	Atoms					ZeroOcc	AltConf	Trace
1	A	333	Total 2595	C 1654	N 420	O 515	S 6	0	8	0
1	B	334	Total 2590	C 1648	N 421	O 516	S 5	0	4	0
1	C	337	Total 2605	C 1655	N 424	O 521	S 5	0	3	0
1	D	333	Total 2578	C 1642	N 419	O 512	S 5	0	3	0

- Molecule 2 is an oligosaccharide called beta-D-mannopyranose-(1-4)-2-acetamido-2-deoxy-beta-D-glucopyranose-(1-4)-2-acetamido-2-deoxy-beta-D-glucopyranose.



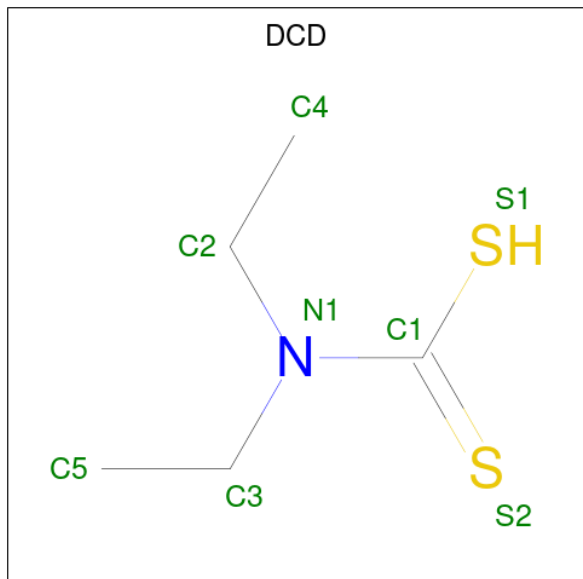
Mol	Chain	Residues	Atoms				ZeroOcc	AltConf	Trace
2	E	3	Total 39	C 22	N 2	O 15	0	0	0
2	F	3	Total 39	C 22	N 2	O 15	0	0	0

- Molecule 3 is an oligosaccharide called 2-acetamido-2-deoxy-beta-D-glucopyranose-(1-4)-2-acetamido-2-deoxy-beta-D-glucopyranose.



Mol	Chain	Residues	Atoms				ZeroOcc	AltConf	Trace
3	G	2	Total	C	N	O	0	0	0
			28	16	2	10			

- Molecule 4 is DIETHYLCARBAMODITHIOIC ACID (three-letter code: DCD) (formula: $C_5H_{11}NS_2$).



Mol	Chain	Residues	Atoms				ZeroOcc	AltConf
4	A	1	Total	C	N	S	0	0
			8	5	1	2		
4	B	1	Total	C	N	S	0	0
			8	5	1	2		
4	C	1	Total	C	N	S	0	0
			8	5	1	2		
4	D	1	Total	C	N	S	0	0
			8	5	1	2		

- Molecule 5 is COPPER (II) ION (three-letter code: CU) (formula: Cu).

Mol	Chain	Residues	Atoms		ZeroOcc	AltConf
5	A	1	Total	Cu	0	0
			1	1		
5	B	1	Total	Cu	0	0
			1	1		
5	C	1	Total	Cu	0	0
			1	1		
5	D	1	Total	Cu	0	0
			1	1		

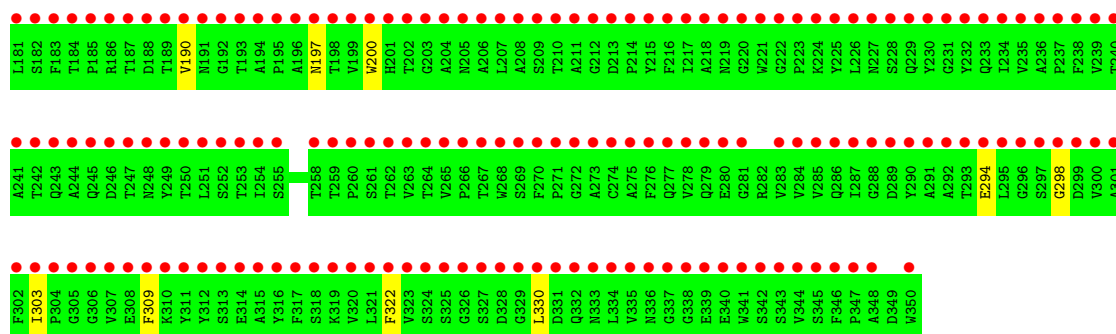
- Molecule 6 is 2-acetamido-2-deoxy-beta-D-glucopyranose (three-letter code: NAG) (formula: $C_8H_{15}NO_6$).



Mol	Chain	Residues	Atoms				ZeroOcc	AltConf
6	A	1	Total	C	N	O	0	0
			14	8	1	5		
6	A	1	Total	C	N	O	0	0
			14	8	1	5		
6	A	1	Total	C	N	O	0	0
			14	8	1	5		
6	B	1	Total	C	N	O	0	0
			14	8	1	5		
6	B	1	Total	C	N	O	0	0
			14	8	1	5		
6	B	1	Total	C	N	O	0	0
			14	8	1	5		
6	C	1	Total	C	N	O	0	0
			14	8	1	5		
6	C	1	Total	C	N	O	0	0
			14	8	1	5		
6	C	1	Total	C	N	O	0	0
			14	8	1	5		
6	D	1	Total	C	N	O	0	0
			14	8	1	5		
6	D	1	Total	C	N	O	0	0
			14	8	1	5		
6	D	1	Total	C	N	O	0	0
			14	8	1	5		

- Molecule 7 is water.

Mol	Chain	Residues	Atoms		ZeroOcc	AltConf
7	A	411	Total 411	O 411	0	0
7	B	346	Total 346	O 346	0	0
7	C	345	Total 345	O 345	0	0
7	D	342	Total 342	O 342	0	0



- Molecule 2: beta-D-mannopyranose-(1-4)-2-acetamido-2-deoxy-beta-D-glucopyranose-(1-4)-2-acetamido-2-deoxy-beta-D-glucopyranose

Chain E: 33% 33% 33%



- Molecule 2: beta-D-mannopyranose-(1-4)-2-acetamido-2-deoxy-beta-D-glucopyranose-(1-4)-2-acetamido-2-deoxy-beta-D-glucopyranose

Chain F: 67% 33%



- Molecule 3: 2-acetamido-2-deoxy-beta-D-glucopyranose-(1-4)-2-acetamido-2-deoxy-beta-D-glucopyranose

Chain G: 50% 50%



4 Data and refinement statistics

Property	Value	Source
Space group	P 1 21 1	Depositor
Cell constants a, b, c, α , β , γ	108.94Å 55.65Å 123.86Å 90.00° 98.26° 90.00°	Depositor
Resolution (Å)	19.92 – 1.70 19.92 – 1.70	Depositor EDS
% Data completeness (in resolution range)	91.3 (19.92-1.70) 91.2 (19.92-1.70)	Depositor EDS
R_{merge}	0.06	Depositor
R_{sym}	(Not available)	Depositor
$\langle I/\sigma(I) \rangle$ ¹	4.64 (at 1.70Å)	Xtriage
Refinement program	REFMAC 5.0	Depositor
R, R_{free}	0.161 , 0.183 0.198 , 0.212	Depositor DCC
R_{free} test set	7426 reflections (5.02%)	wwPDB-VP
Wilson B-factor (Å ²)	21.9	Xtriage
Anisotropy	0.617	Xtriage
Bulk solvent k_{sol} (e/Å ³), B_{sol} (Å ²)	0.34 , 42.1	EDS
L-test for twinning ²	$\langle L \rangle = 0.49$, $\langle L^2 \rangle = 0.32$	Xtriage
Estimated twinning fraction	No twinning to report.	Xtriage
F_o, F_c correlation	0.92	EDS
Total number of atoms	12136	wwPDB-VP
Average B, all atoms (Å ²)	18.0	wwPDB-VP

Xtriage's analysis on translational NCS is as follows: *The largest off-origin peak in the Patterson function is 5.12% of the height of the origin peak. No significant pseudotranslation is detected.*

¹Intensities estimated from amplitudes.

²Theoretical values of $\langle |L| \rangle$, $\langle L^2 \rangle$ for acentric reflections are 0.5, 0.333 respectively for untwinned datasets, and 0.375, 0.2 for perfectly twinned datasets.

5 Model quality

5.1 Standard geometry

Bond lengths and bond angles in the following residue types are not validated in this section: DCD, NAG, CU, BMA

The Z score for a bond length (or angle) is the number of standard deviations the observed value is removed from the expected value. A bond length (or angle) with $|Z| > 5$ is considered an outlier worth inspection. RMSZ is the root-mean-square of all Z scores of the bond lengths (or angles).

Mol	Chain	Bond lengths		Bond angles	
		RMSZ	$\# Z > 5$	RMSZ	$\# Z > 5$
1	A	0.49	0/2710	0.78	6/3713 (0.2%)
1	B	0.43	0/2687	0.77	2/3684 (0.1%)
1	C	0.41	0/2698	0.73	2/3698 (0.1%)
1	D	0.43	0/2670	0.75	2/3660 (0.1%)
All	All	0.44	0/10765	0.76	12/14755 (0.1%)

Chiral center outliers are detected by calculating the chiral volume of a chiral center and verifying if the center is modelled as a planar moiety or with the opposite hand. A planarity outlier is detected by checking planarity of atoms in a peptide group, atoms in a mainchain group or atoms of a sidechain that are expected to be planar.

Mol	Chain	#Chirality outliers	#Planarity outliers
1	A	0	2

There are no bond length outliers.

The worst 5 of 12 bond angle outliers are listed below:

Mol	Chain	Res	Type	Atoms	Z	Observed(°)	Ideal(°)
1	C	176	ASP	CB-CG-OD2	6.08	123.77	118.30
1	A	31	ASP	CB-CG-OD2	5.86	123.58	118.30
1	D	31	ASP	CB-CG-OD2	5.79	123.51	118.30
1	B	31	ASP	CB-CG-OD2	5.73	123.46	118.30
1	D	120	ASP	CB-CG-OD2	5.62	123.36	118.30

There are no chirality outliers.

All (2) planarity outliers are listed below:

Mol	Chain	Res	Type	Group
1	A	8[A]	GLU	Sidechain

Continued on next page...

Continued from previous page...

Mol	Chain	Res	Type	Group
1	A	8[B]	GLU	Sidechain

5.2 Too-close contacts ⓘ

In the following table, the Non-H and H(model) columns list the number of non-hydrogen atoms and hydrogen atoms in the chain respectively. The H(added) column lists the number of hydrogen atoms added and optimized by MolProbity. The Clashes column lists the number of clashes within the asymmetric unit, whereas Symm-Clashes lists symmetry-related clashes.

Mol	Chain	Non-H	H(model)	H(added)	Clashes	Symm-Clashes
1	A	2595	0	2405	28	0
1	B	2590	0	2399	13	0
1	C	2605	0	2411	20	0
1	D	2578	0	2385	15	0
2	E	39	0	34	1	0
2	F	39	0	34	1	0
3	G	28	0	25	1	0
4	A	8	0	10	1	0
4	B	8	0	11	0	0
4	C	8	0	10	3	0
4	D	8	0	11	0	0
5	A	1	0	0	0	0
5	B	1	0	0	0	0
5	C	1	0	0	0	0
5	D	1	0	0	0	0
6	A	42	0	39	0	0
6	B	56	0	52	0	0
6	C	42	0	39	0	0
6	D	42	0	39	0	0
7	A	411	0	0	8	0
7	B	346	0	0	4	0
7	C	345	0	0	5	0
7	D	342	0	0	4	0
All	All	12136	0	9904	75	0

The all-atom clashscore is defined as the number of clashes found per 1000 atoms (including hydrogen atoms). The all-atom clashscore for this structure is 4.

The worst 5 of 75 close contacts within the same asymmetric unit are listed below, sorted by their clash magnitude.

Atom-1	Atom-2	Interatomic distance (Å)	Clash overlap (Å)
1:C:78[A]:ASN:OD1	7:C:2112:HOH:O	1.74	1.04
1:D:171:THR:HA	1:D:173:GLN:OE1	1.68	0.93
1:A:73:GLU:HG3	1:A:127[A]:ILE:HD12	1.55	0.86
1:A:181[B]:LEU:HD23	7:A:2103:HOH:O	1.79	0.82
1:A:78[B]:ASN:ND2	1:A:124:THR:OG1	2.12	0.82

There are no symmetry-related clashes.

5.3 Torsion angles [i](#)

5.3.1 Protein backbone [i](#)

In the following table, the Percentiles column shows the percent Ramachandran outliers of the chain as a percentile score with respect to all X-ray entries followed by that with respect to entries of similar resolution.

The Analysed column shows the number of residues for which the backbone conformation was analysed, and the total number of residues.

Mol	Chain	Analysed	Favoured	Allowed	Outliers	Percentiles	
1	A	337/350 (96%)	329 (98%)	8 (2%)	0	100	100
1	B	334/350 (95%)	325 (97%)	9 (3%)	0	100	100
1	C	336/350 (96%)	324 (96%)	12 (4%)	0	100	100
1	D	332/350 (95%)	323 (97%)	9 (3%)	0	100	100
All	All	1339/1400 (96%)	1301 (97%)	38 (3%)	0	100	100

There are no Ramachandran outliers to report.

5.3.2 Protein sidechains [i](#)

In the following table, the Percentiles column shows the percent sidechain outliers of the chain as a percentile score with respect to all X-ray entries followed by that with respect to entries of similar resolution.

The Analysed column shows the number of residues for which the sidechain conformation was analysed, and the total number of residues.

Mol	Chain	Analysed	Rotameric	Outliers	Percentiles	
1	A	284/294 (97%)	280 (99%)	4 (1%)	62	49
1	B	282/294 (96%)	278 (99%)	4 (1%)	62	49

Continued on next page...

Continued from previous page...

Mol	Chain	Analysed	Rotameric	Outliers	Percentiles
1	C	284/294 (97%)	279 (98%)	5 (2%)	54 39
1	D	279/294 (95%)	277 (99%)	2 (1%)	81 75
All	All	1129/1176 (96%)	1114 (99%)	15 (1%)	65 52

5 of 15 residues with a non-rotameric sidechain are listed below:

Mol	Chain	Res	Type
1	B	171	THR
1	D	72	TYR
1	C	3	SER
1	D	173	GLN
1	C	168	THR

Sometimes sidechains can be flipped to improve hydrogen bonding and reduce clashes. 5 of 14 such sidechains are listed below:

Mol	Chain	Res	Type
1	B	332	GLN
1	B	336	ASN
1	D	336	ASN
1	C	336	ASN
1	D	332	GLN

5.3.3 RNA ⓘ

There are no RNA molecules in this entry.

5.4 Non-standard residues in protein, DNA, RNA chains ⓘ

There are no non-standard protein/DNA/RNA residues in this entry.

5.5 Carbohydrates ⓘ

8 monosaccharides are modelled in this entry.

In the following table, the Counts columns list the number of bonds (or angles) for which Mogul statistics could be retrieved, the number of bonds (or angles) that are observed in the model and the number of bonds (or angles) that are defined in the Chemical Component Dictionary. The Link column lists molecule types, if any, to which the group is linked. The Z score for a bond length (or angle) is the number of standard deviations the observed value is removed from the

expected value. A bond length (or angle) with $|Z| > 2$ is considered an outlier worth inspection. RMSZ is the root-mean-square of all Z scores of the bond lengths (or angles).

Mol	Type	Chain	Res	Link	Bond lengths			Bond angles		
					Counts	RMSZ	$\# Z > 2$	Counts	RMSZ	$\# Z > 2$
2	NAG	E	1	1,2	14,14,15	0.45	0	17,19,21	1.16	2 (11%)
2	NAG	E	2	2	14,14,15	0.48	0	17,19,21	1.02	1 (5%)
2	BMA	E	3	2	11,11,12	0.59	0	15,15,17	0.53	0
2	NAG	F	1	1,2	14,14,15	0.50	0	17,19,21	0.99	0
2	NAG	F	2	2	14,14,15	0.50	0	17,19,21	1.07	0
2	BMA	F	3	2	11,11,12	0.63	0	15,15,17	0.52	0
3	NAG	G	1	1,3	14,14,15	0.54	0	17,19,21	1.37	2 (11%)
3	NAG	G	2	3	14,14,15	0.58	0	17,19,21	0.85	0

In the following table, the Chirals column lists the number of chiral outliers, the number of chiral centers analysed, the number of these observed in the model and the number defined in the Chemical Component Dictionary. Similar counts are reported in the Torsion and Rings columns. '-' means no outliers of that kind were identified.

Mol	Type	Chain	Res	Link	Chirals	Torsions	Rings
2	NAG	E	1	1,2	-	0/6/23/26	0/1/1/1
2	NAG	E	2	2	-	2/6/23/26	0/1/1/1
2	BMA	E	3	2	-	0/2/19/22	0/1/1/1
2	NAG	F	1	1,2	-	0/6/23/26	0/1/1/1
2	NAG	F	2	2	-	0/6/23/26	0/1/1/1
2	BMA	F	3	2	-	0/2/19/22	0/1/1/1
3	NAG	G	1	1,3	-	2/6/23/26	0/1/1/1
3	NAG	G	2	3	-	0/6/23/26	0/1/1/1

There are no bond length outliers.

All (5) bond angle outliers are listed below:

Mol	Chain	Res	Type	Atoms	Z	Observed(°)	Ideal(°)
3	G	1	NAG	C2-N2-C7	-3.35	118.41	122.90
3	G	1	NAG	O5-C1-C2	-3.12	106.46	111.29
2	E	1	NAG	O5-C1-C2	-3.06	106.56	111.29
2	E	2	NAG	O4-C4-C3	-2.03	105.60	110.38
2	E	1	NAG	C2-N2-C7	-2.00	120.22	122.90

There are no chirality outliers.

All (4) torsion outliers are listed below:

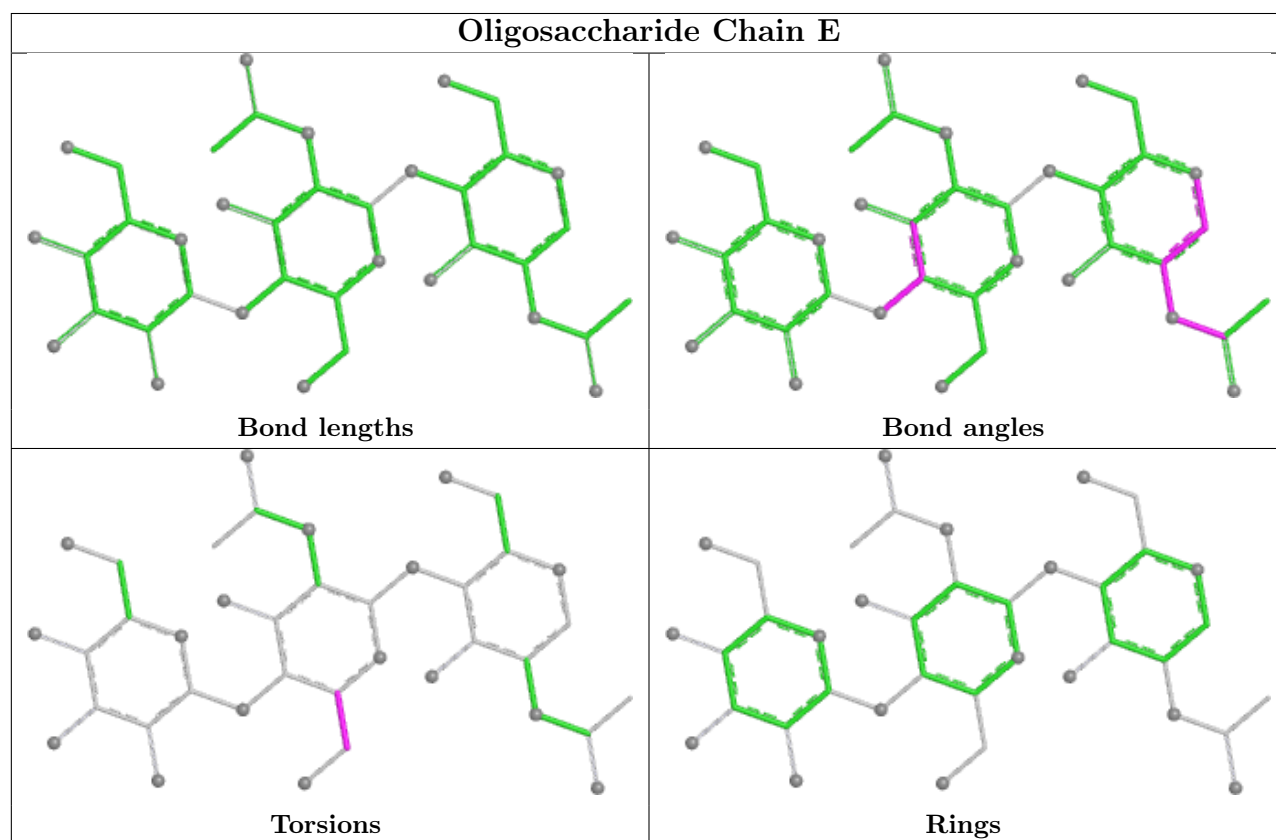
Mol	Chain	Res	Type	Atoms
2	E	2	NAG	C4-C5-C6-O6
3	G	1	NAG	C4-C5-C6-O6
2	E	2	NAG	O5-C5-C6-O6
3	G	1	NAG	O5-C5-C6-O6

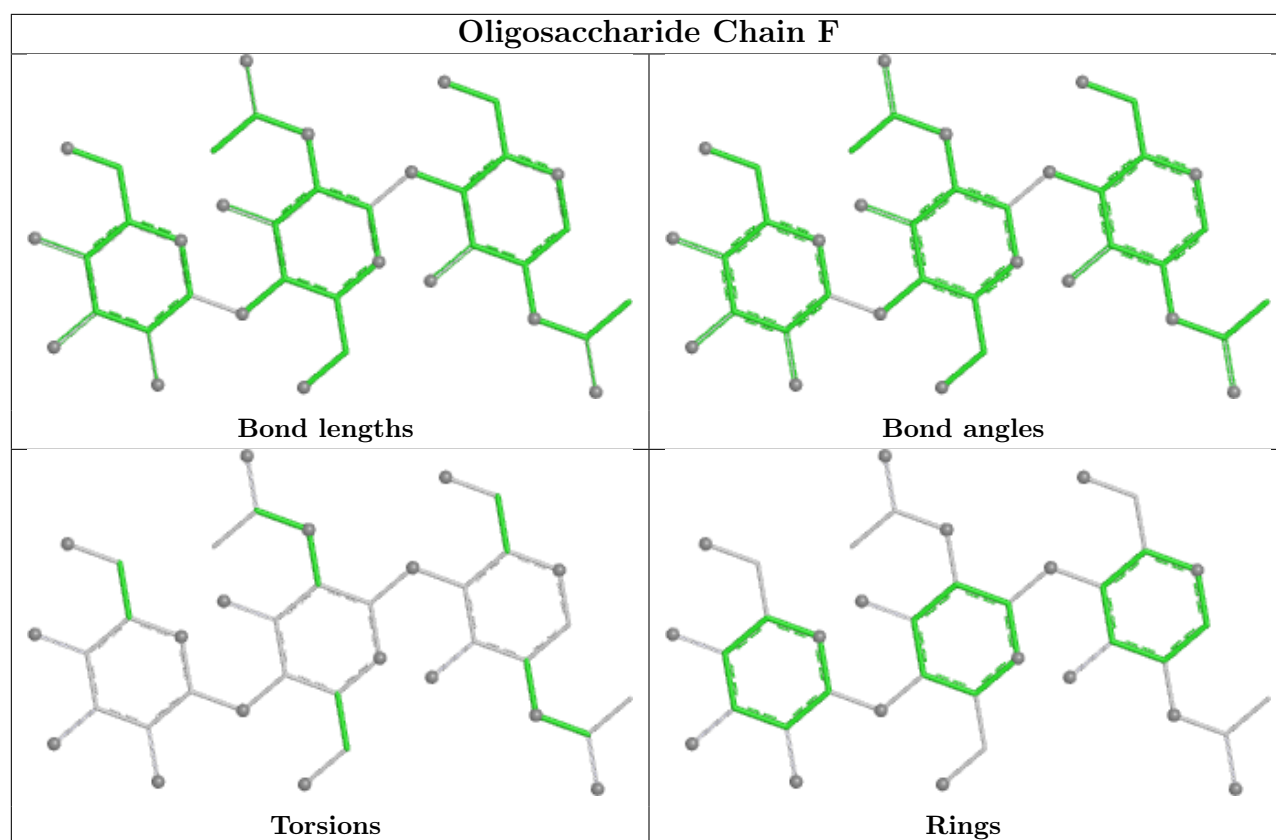
There are no ring outliers.

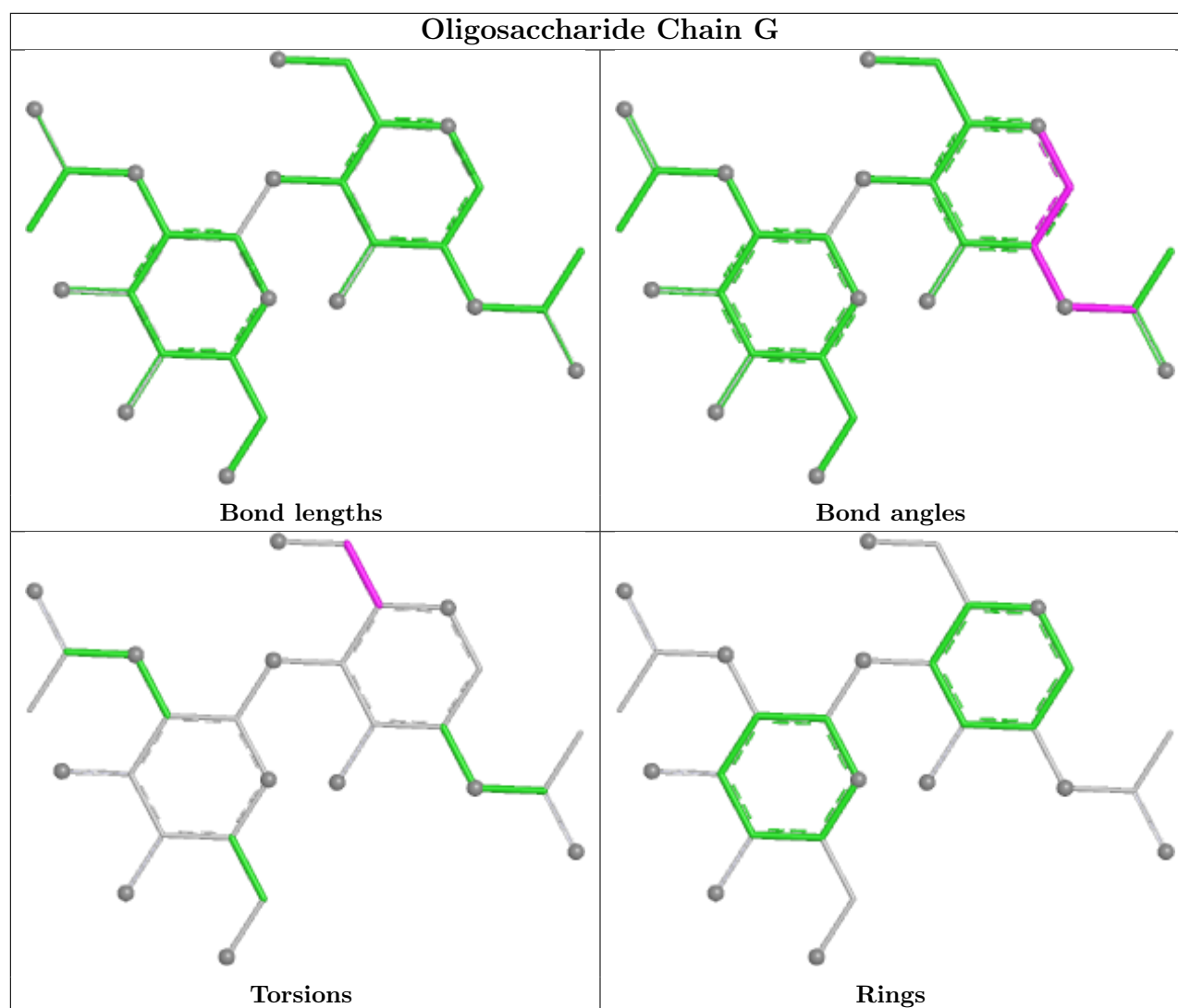
3 monomers are involved in 3 short contacts:

Mol	Chain	Res	Type	Clashes	Symm-Clashes
2	F	1	NAG	1	0
2	E	1	NAG	1	0
3	G	1	NAG	1	0

The following is a two-dimensional graphical depiction of Mogul quality analysis of bond lengths, bond angles, torsion angles, and ring geometry for oligosaccharide.







5.6 Ligand geometry [i](#)

Of 21 ligands modelled in this entry, 4 are monoatomic - leaving 17 for Mogul analysis.

In the following table, the Counts columns list the number of bonds (or angles) for which Mogul statistics could be retrieved, the number of bonds (or angles) that are observed in the model and the number of bonds (or angles) that are defined in the Chemical Component Dictionary. The Link column lists molecule types, if any, to which the group is linked. The Z score for a bond length (or angle) is the number of standard deviations the observed value is removed from the expected value. A bond length (or angle) with $|Z| > 2$ is considered an outlier worth inspection. RMSZ is the root-mean-square of all Z scores of the bond lengths (or angles).

Mol	Type	Chain	Res	Link	Bond lengths			Bond angles		
					Counts	RMSZ	$\# Z > 2$	Counts	RMSZ	$\# Z > 2$
4	DCD	A	1351	5	6,7,7	0.97	0	6,8,8	0.93	0
6	NAG	C	1356	1	14,14,15	0.60	0	17,19,21	1.03	1 (5%)
6	NAG	B	1354	1	14,14,15	0.55	0	17,19,21	1.26	1 (5%)

Mol	Type	Chain	Res	Link	Bond lengths			Bond angles		
					Counts	RMSZ	# Z > 2	Counts	RMSZ	# Z > 2
4	DCD	D	1351	5	6,7,7	1.61	1 (16%)	6,8,8	1.46	1 (16%)
6	NAG	A	1357	1	14,14,15	0.63	0	17,19,21	0.85	0
6	NAG	A	1356	1	14,14,15	0.60	0	17,19,21	0.91	1 (5%)
6	NAG	B	1356	1	14,14,15	0.59	0	17,19,21	0.77	0
6	NAG	B	1353	1	14,14,15	0.60	0	17,19,21	0.89	1 (5%)
6	NAG	C	1357	1	14,14,15	0.64	0	17,19,21	1.26	2 (11%)
6	NAG	A	1353	1	14,14,15	0.46	0	17,19,21	0.85	0
6	NAG	C	1353	1	14,14,15	0.48	0	17,19,21	0.60	0
6	NAG	D	1353	1	14,14,15	0.51	0	17,19,21	1.24	2 (11%)
6	NAG	D	1356	1	14,14,15	0.51	0	17,19,21	0.91	0
4	DCD	B	1351	5	6,7,7	1.33	1 (16%)	6,8,8	0.91	0
4	DCD	C	1351	5	6,7,7	1.09	1 (16%)	6,8,8	0.58	0
6	NAG	D	1357	1	14,14,15	0.64	0	17,19,21	1.11	1 (5%)
6	NAG	B	1355	1	14,14,15	0.66	0	17,19,21	1.49	2 (11%)

In the following table, the Chirals column lists the number of chiral outliers, the number of chiral centers analysed, the number of these observed in the model and the number defined in the Chemical Component Dictionary. Similar counts are reported in the Torsion and Rings columns. '-' means no outliers of that kind were identified.

Mol	Type	Chain	Res	Link	Chirals	Torsions	Rings
4	DCD	A	1351	5	-	0/8/8/8	-
6	NAG	C	1356	1	-	0/6/23/26	0/1/1/1
6	NAG	B	1354	1	-	0/6/23/26	0/1/1/1
4	DCD	D	1351	5	-	0/8/8/8	-
6	NAG	A	1357	1	-	0/6/23/26	0/1/1/1
6	NAG	A	1356	1	-	0/6/23/26	0/1/1/1
6	NAG	B	1356	1	-	0/6/23/26	0/1/1/1
6	NAG	B	1353	1	-	0/6/23/26	0/1/1/1
6	NAG	C	1357	1	-	0/6/23/26	0/1/1/1
6	NAG	A	1353	1	-	0/6/23/26	0/1/1/1
6	NAG	C	1353	1	-	0/6/23/26	0/1/1/1
6	NAG	D	1353	1	-	0/6/23/26	0/1/1/1
6	NAG	D	1356	1	-	0/6/23/26	0/1/1/1
4	DCD	B	1351	5	-	0/8/8/8	-
4	DCD	C	1351	5	-	0/8/8/8	-
6	NAG	D	1357	1	-	0/6/23/26	0/1/1/1
6	NAG	B	1355	1	-	0/6/23/26	0/1/1/1

All (3) bond length outliers are listed below:

Mol	Chain	Res	Type	Atoms	Z	Observed(Å)	Ideal(Å)
4	D	1351	DCD	C1-S2	-3.54	1.59	1.66
4	B	1351	DCD	C1-S2	-3.05	1.60	1.66
4	C	1351	DCD	C1-S2	-2.35	1.61	1.66

The worst 5 of 12 bond angle outliers are listed below:

Mol	Chain	Res	Type	Atoms	Z	Observed(°)	Ideal(°)
6	B	1355	NAG	O5-C1-C2	-4.42	104.46	111.29
6	B	1354	NAG	C2-N2-C7	-4.10	117.40	122.90
6	C	1357	NAG	O5-C1-C2	-3.33	106.14	111.29
4	D	1351	DCD	S2-C1-N1	-3.14	117.98	123.70
6	B	1355	NAG	C2-N2-C7	-2.93	118.97	122.90

There are no chirality outliers.

There are no torsion outliers.

There are no ring outliers.

2 monomers are involved in 4 short contacts:

Mol	Chain	Res	Type	Clashes	Symm-Clashes
4	A	1351	DCD	1	0
4	C	1351	DCD	3	0

5.7 Other polymers [i](#)

There are no such residues in this entry.

5.8 Polymer linkage issues [i](#)

There are no chain breaks in this entry.

6 Fit of model and data [i](#)

6.1 Protein, DNA and RNA chains [i](#)

Warning: The R factor obtained from EDS is 0.2703, which does not match the depositor's R factor of 0.161. Please interpret the results in this section carefully.

In the following table, the column labelled '#RSRZ > 2' contains the number (and percentage) of RSRZ outliers, followed by percent RSRZ outliers for the chain as percentile scores relative to all X-ray entries and entries of similar resolution. The OWAB column contains the minimum, median, 95th percentile and maximum values of the occupancy-weighted average B-factor per residue. The column labelled 'Q < 0.9' lists the number of (and percentage) of residues with an average occupancy less than 0.9.

Mol	Chain	Analysed	<RSRZ>	#RSRZ>2	OWAB(Å ²)	Q<0.9
1	A	333/350 (95%)	-0.11	3 (0%) 81 83	10, 15, 20, 27	8 (2%)
1	B	334/350 (95%)	-0.03	4 (1%) 76 79	11, 15, 19, 28	4 (1%)
1	C	337/350 (96%)	0.21	8 (2%) 59 62	10, 15, 20, 34	3 (0%)
1	D	333/350 (95%)	4.87	329 (98%) 0 0	9, 15, 20, 34	3 (0%)
All	All	1337/1400 (95%)	1.23	344 (25%) 2 2	9, 15, 20, 34	18 (1%)

The worst 5 of 344 RSRZ outliers are listed below:

Mol	Chain	Res	Type	RSRZ
1	D	155	SER	12.6
1	D	154	SER	11.9
1	D	138	TYR	11.2
1	D	170	SER	10.3
1	D	262	THR	10.0

6.2 Non-standard residues in protein, DNA, RNA chains [i](#)

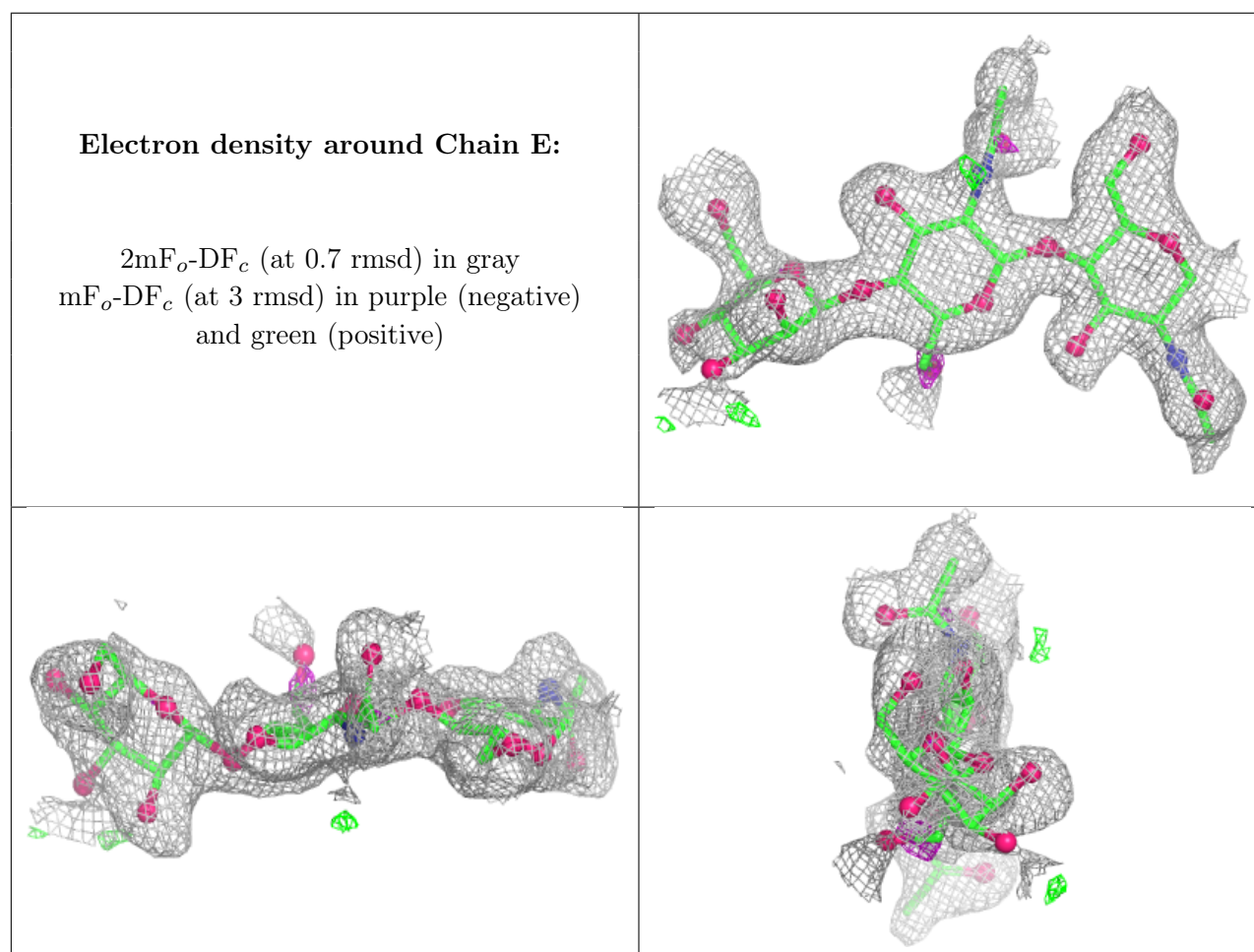
There are no non-standard protein/DNA/RNA residues in this entry.

6.3 Carbohydrates [i](#)

In the following table, the Atoms column lists the number of modelled atoms in the group and the number defined in the chemical component dictionary. The B-factors column lists the minimum, median, 95th percentile and maximum values of B factors of atoms in the group. The column labelled 'Q < 0.9' lists the number of atoms with occupancy less than 0.9.

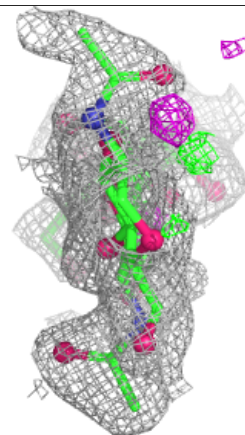
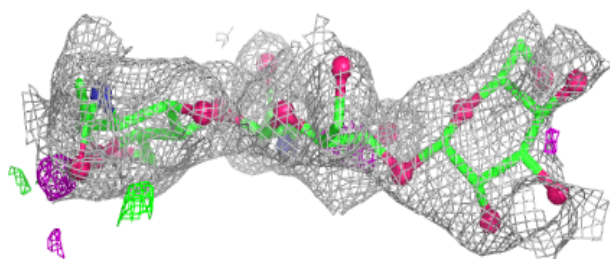
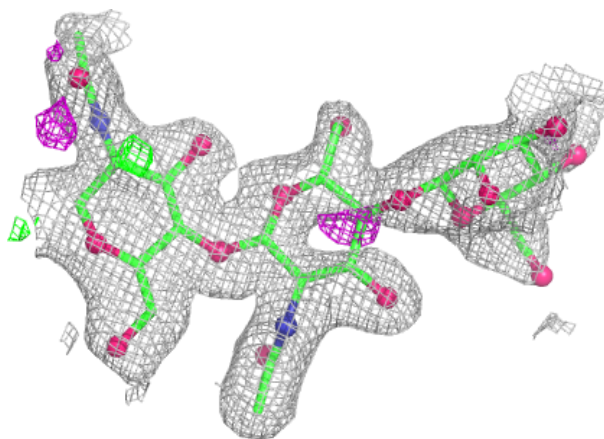
Mol	Type	Chain	Res	Atoms	RSCC	RSR	B-factors(\AA^2)	Q<0.9
2	BMA	E	3	11/12	0.67	0.13	48,49,50,50	0
2	BMA	F	3	11/12	0.68	0.11	52,55,56,56	0
3	NAG	G	1	14/15	0.74	0.13	31,36,39,40	0
2	NAG	E	2	14/15	0.75	0.12	36,41,44,46	0
2	NAG	F	1	14/15	0.76	0.12	31,36,42,45	0
2	NAG	F	2	14/15	0.78	0.12	35,40,43,48	0
2	NAG	E	1	14/15	0.82	0.10	31,36,39,40	0
3	NAG	G	2	14/15	0.82	0.10	36,39,43,45	0

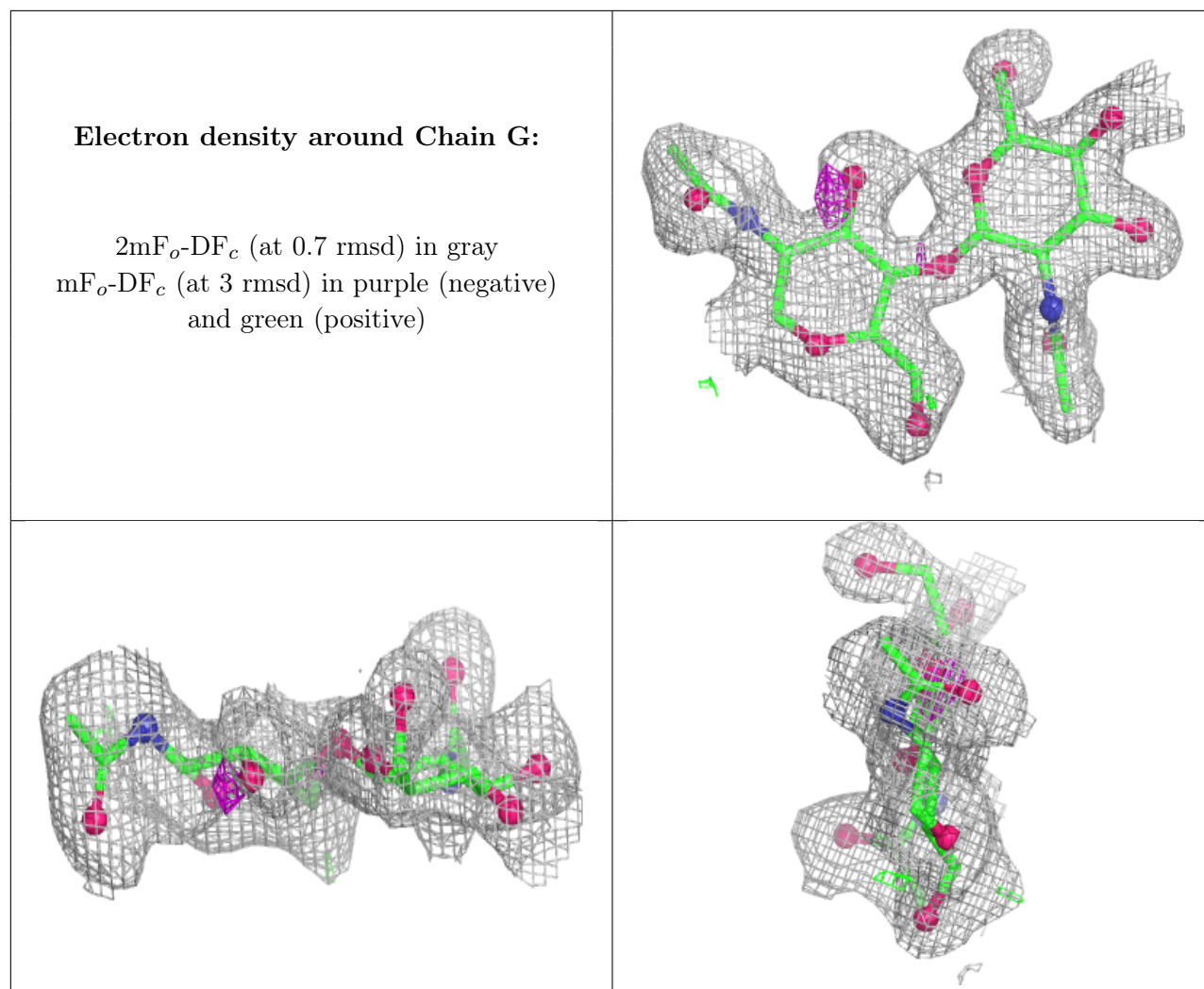
The following is a graphical depiction of the model fit to experimental electron density for oligosaccharide. Each fit is shown from different orientation to approximate a three-dimensional view.



Electron density around Chain F:

$2mF_o-DF_c$ (at 0.7 rmsd) in gray
 mF_o-DF_c (at 3 rmsd) in purple (negative)
and green (positive)





6.4 Ligands ⓘ

In the following table, the Atoms column lists the number of modelled atoms in the group and the number defined in the chemical component dictionary. The B-factors column lists the minimum, median, 95th percentile and maximum values of B factors of atoms in the group. The column labelled 'Q< 0.9' lists the number of atoms with occupancy less than 0.9.

Mol	Type	Chain	Res	Atoms	RSCC	RSR	B-factors(\AA^2)	Q<0.9
5	CU	D	1352	1/1	0.43	0.48	17,17,17,17	0
6	NAG	A	1357	14/15	0.68	0.13	32,36,42,44	0
6	NAG	D	1356	14/15	0.72	0.12	29,33,37,38	0
6	NAG	B	1354	14/15	0.74	0.12	40,45,47,48	0
6	NAG	D	1353	14/15	0.76	0.12	33,39,42,43	0
6	NAG	B	1355	14/15	0.78	0.11	28,34,45,46	0
6	NAG	C	1353	14/15	0.78	0.12	34,39,44,46	0
6	NAG	B	1356	14/15	0.80	0.11	35,42,45,45	0
6	NAG	D	1357	14/15	0.81	0.11	32,38,44,45	0

Continued on next page...

Continued from previous page...

Mol	Type	Chain	Res	Atoms	RSCC	RSR	B-factors(\AA^2)	Q<0.9
4	DCD	D	1351	8/8	0.82	0.34	19,20,23,23	0
6	NAG	C	1357	14/15	0.83	0.11	32,39,42,43	0
6	NAG	C	1356	14/15	0.84	0.10	34,39,46,46	0
6	NAG	A	1356	14/15	0.86	0.10	27,32,41,43	0
6	NAG	B	1353	14/15	0.89	0.07	29,34,38,38	0
6	NAG	A	1353	14/15	0.89	0.08	26,32,35,36	0
4	DCD	C	1351	8/8	0.91	0.11	20,21,22,23	0
4	DCD	B	1351	8/8	0.96	0.09	22,23,24,24	0
4	DCD	A	1351	8/8	0.97	0.07	17,18,20,20	0
5	CU	B	1352	1/1	0.98	0.03	17,17,17,17	0
5	CU	C	1352	1/1	0.98	0.04	17,17,17,17	0
5	CU	A	1352	1/1	0.99	0.03	17,17,17,17	0

6.5 Other polymers [i](#)

There are no such residues in this entry.