



# Full wwPDB X-ray Structure Validation Report ⓘ

Feb 2, 2025 – 01:55 am GMT

PDB ID : 9GFI  
Title : hRAR alpha LBD-AM580 complex with staple peptide  
Authors : Perdriau, C.; Luton, A.; Zimmer, K.; Neuville, M.; Saragaglia, C.; Peluso-  
Iltis, C.; Osz, J.; Kauffmann, B.; Collie, G.; Rochel, N.; Guichard, G.; Pasco,  
M.  
Deposited on : 2024-08-09  
Resolution : 2.10 Å(reported)

This is a Full wwPDB X-ray Structure Validation Report for a publicly released PDB entry.

We welcome your comments at [validation@mail.wwpdb.org](mailto:validation@mail.wwpdb.org)

A user guide is available at

<https://www.wwpdb.org/validation/2017/XrayValidationReportHelp>

with specific help available everywhere you see the ⓘ symbol.

The types of validation reports are described at

<http://www.wwpdb.org/validation/2017/FAQs#types>.

---

The following versions of software and data (see [references ⓘ](#)) were used in the production of this report:

MolProbity	:	4.02b-467
Mogul	:	1.8.4, CSD as541be (2020)
Xtriage (Phenix)	:	1.13
EDS	:	3.0
buster-report	:	1.1.7 (2018)
Percentile statistics	:	20231227.v01 (using entries in the PDB archive December 27th 2023)
CCP4	:	9.0.003 (Gargrove)
Density-Fitness	:	1.0.11
Ideal geometry (proteins)	:	Engh & Huber (2001)
Ideal geometry (DNA, RNA)	:	Parkinson et al. (1996)
Validation Pipeline (wwPDB-VP)	:	2.40

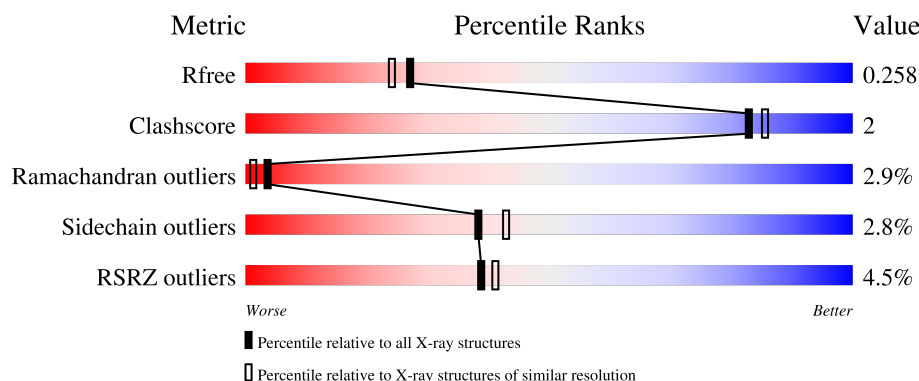
# 1 Overall quality at a glance

The following experimental techniques were used to determine the structure:

*X-RAY DIFFRACTION*

The reported resolution of this entry is 2.10 Å.

Percentile scores (ranging between 0-100) for global validation metrics of the entry are shown in the following graphic. The table shows the number of entries on which the scores are based.



Metric	Whole archive (#Entries)	Similar resolution (#Entries, resolution range(Å))
$R_{free}$	164625	6234 (2.10-2.10)
Clashscore	180529	6893 (2.10-2.10)
Ramachandran outliers	177936	6839 (2.10-2.10)
Sidechain outliers	177891	6840 (2.10-2.10)
RSRZ outliers	164620	6234 (2.10-2.10)

The table below summarises the geometric issues observed across the polymeric chains and their fit to the electron density. The red, orange, yellow and green segments of the lower bar indicate the fraction of residues that contain outliers for  $\geq 3$ , 2, 1 and 0 types of geometric quality criteria respectively. A grey segment represents the fraction of residues that are not modelled. The numeric value for each fraction is indicated below the corresponding segment, with a dot representing fractions  $\leq 5\%$ . The upper red bar (where present) indicates the fraction of residues that have poor fit to the electron density. The numeric value is given above the bar.

Mol	Chain	Length	Quality of chain
1	A	236	
2	B	10	

The following table lists non-polymeric compounds, carbohydrate monomers and non-standard residues in protein, DNA, RNA chains that are outliers for geometric or electron-density-fit criteria:

Mol	Type	Chain	Res	Chirality	Geometry	Clashes	Electron density
2	A1IM7	B	10	X	-	-	-
2	NLE	B	5	X	-	-	-
2	HRG	B	9	X	-	-	-

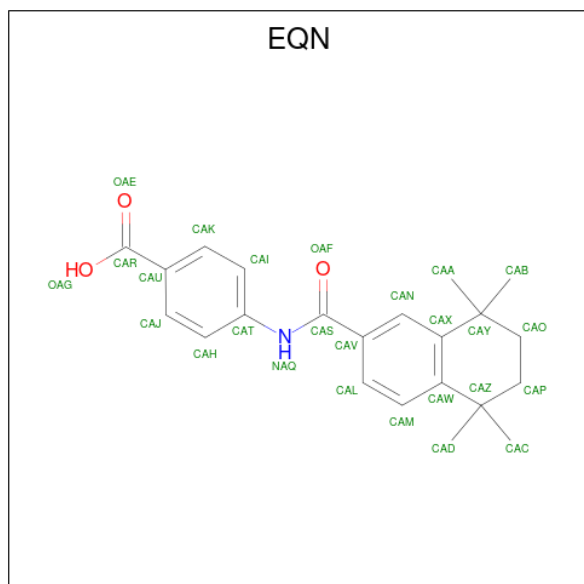


In the tables below, the ZeroOcc column contains the number of atoms modelled with zero occupancy, the AltConf column contains the number of residues with at least one atom in alternate conformation and the Trace column contains the number of residues modelled with at most 2 atoms.

- Molecule 2 is a protein called Stapled peptide-like ligand.

Mol	Chain	Residues	Atoms				ZeroOcc	AltConf	Trace
2	B	10	Total	C	N	O	0	0	0
			93	61	20	12			

- Molecule 3 is 4-[(5,5,8,8-tetramethyl-5,6,7,8-tetrahydronaphthalen-2-yl)carbonyl]amino}benzoic acid (three-letter code: EQN) (formula: C<sub>22</sub>H<sub>25</sub>NO<sub>3</sub>) (labeled as "Ligand of Interest" by depositor).



Mol	Chain	Residues	Atoms				ZeroOcc	AltConf
3	A	1	Total	C	N	O	0	0
			26	22	1	3		

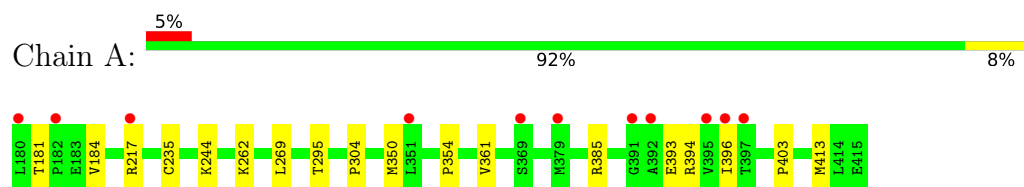
- Molecule 4 is water.

Mol	Chain	Residues	Atoms		ZeroOcc	AltConf
4	A	55	Total	O	0	0
			55	55		

### 3 Residue-property plots [i](#)

These plots are drawn for all protein, RNA, DNA and oligosaccharide chains in the entry. The first graphic for a chain summarises the proportions of the various outlier classes displayed in the second graphic. The second graphic shows the sequence view annotated by issues in geometry and electron density. Residues are color-coded according to the number of geometric quality criteria for which they contain at least one outlier: green = 0, yellow = 1, orange = 2 and red = 3 or more. A red dot above a residue indicates a poor fit to the electron density ( $RSRZ > 2$ ). Stretches of 2 or more consecutive residues without any outlier are shown as a green connector. Residues present in the sample, but not in the model, are shown in grey.

- Molecule 1: Retinoic acid receptor alpha



- Molecule 2: Stapled peptide-like ligand



## 4 Data and refinement statistics

Property	Value	Source
Space group	C 1 2 1	Depositor
Cell constants a, b, c, $\alpha$ , $\beta$ , $\gamma$	87.51Å 62.06Å 49.35Å 90.00° 105.57° 90.00°	Depositor
Resolution (Å)	42.15 – 2.10 42.15 – 2.10	Depositor EDS
% Data completeness (in resolution range)	99.8 (42.15-2.10) 99.8 (42.15-2.10)	Depositor EDS
$R_{merge}$	0.09	Depositor
$R_{sym}$	(Not available)	Depositor
$\langle I/\sigma(I) \rangle$ <sup>1</sup>	1.20 (at 2.10Å)	Xtriage
Refinement program	BUSTER 2.10.4	Depositor
R, $R_{free}$	0.223 , 0.272 0.214 , 0.258	Depositor DCC
$R_{free}$ test set	1497 reflections (10.01%)	wwPDB-VP
Wilson B-factor (Å <sup>2</sup> )	39.3	Xtriage
Anisotropy	0.543	Xtriage
Bulk solvent $k_{sol}$ (e/Å <sup>3</sup> ), $B_{sol}$ (Å <sup>2</sup> )	0.33 , 36.9	EDS
L-test for twinning <sup>2</sup>	$\langle  L  \rangle = 0.50$ , $\langle L^2 \rangle = 0.33$	Xtriage
Estimated twinning fraction	No twinning to report.	Xtriage
$F_o, F_c$ correlation	0.96	EDS
Total number of atoms	2011	wwPDB-VP
Average B, all atoms (Å <sup>2</sup> )	52.0	wwPDB-VP

Xtriage's analysis on translational NCS is as follows: *The largest off-origin peak in the Patterson function is 9.57% of the height of the origin peak. No significant pseudotranslation is detected.*

<sup>1</sup>Intensities estimated from amplitudes.

<sup>2</sup>Theoretical values of  $\langle |L| \rangle$ ,  $\langle L^2 \rangle$  for acentric reflections are 0.5, 0.333 respectively for untwinned datasets, and 0.375, 0.2 for perfectly twinned datasets.

## 5 Model quality

### 5.1 Standard geometry

Bond lengths and bond angles in the following residue types are not validated in this section: EQN, HRG, A1IM7, NLE

The Z score for a bond length (or angle) is the number of standard deviations the observed value is removed from the expected value. A bond length (or angle) with  $|Z| > 5$  is considered an outlier worth inspection. RMSZ is the root-mean-square of all Z scores of the bond lengths (or angles).

Mol	Chain	Bond lengths		Bond angles	
		RMSZ	$\# Z  > 5$	RMSZ	$\# Z  > 5$
1	A	0.38	0/1870	0.52	0/2536
2	B	2.81	7/61 (11.5%)	3.97	17/78 (21.8%)
All	All	0.63	7/1931 (0.4%)	0.85	17/2614 (0.7%)

Chiral center outliers are detected by calculating the chiral volume of a chiral center and verifying if the center is modelled as a planar moiety or with the opposite hand. A planarity outlier is detected by checking planarity of atoms in a peptide group, atoms in a mainchain group or atoms of a sidechain that are expected to be planar.

Mol	Chain	#Chirality outliers	#Planarity outliers
2	B	11	6

All (7) bond length outliers are listed below:

Mol	Chain	Res	Type	Atoms	Z	Observed(Å)	Ideal(Å)
2	B	1	HIS	CG-CD2	8.09	1.49	1.35
2	B	4	LEU	N-CA	-7.22	1.31	1.46
2	B	6	ARG	N-CA	-6.41	1.33	1.46
2	B	8	LEU	N-CA	-5.78	1.34	1.46
2	B	7	LEU	N-CA	-5.37	1.35	1.46
2	B	3	ILE	N-CA	-5.19	1.35	1.46
2	B	1	HIS	CE1-NE2	5.14	1.44	1.32

All (17) bond angle outliers are listed below:

Mol	Chain	Res	Type	Atoms	Z	Observed(°)	Ideal(°)
2	B	6	ARG	NE-CZ-NH1	11.24	125.92	120.30
2	B	4	LEU	N-CA-C	8.37	133.59	111.00
2	B	4	LEU	CB-CG-CD1	8.19	124.92	111.00
2	B	6	ARG	CD-NE-CZ	-8.05	112.33	123.60

*Continued on next page...*



*Continued from previous page...*

Mol	Chain	Res	Type	Atoms	Z	Observed(°)	Ideal(°)
2	B	7	LEU	N-CA-CB	7.42	125.25	110.40
2	B	1	HIS	N-CA-CB	7.25	123.64	110.60
2	B	8	LEU	CB-CG-CD2	6.95	122.81	111.00
2	B	6	ARG	N-CA-C	6.78	129.32	111.00
2	B	3	ILE	N-CA-C	6.18	127.70	111.00
2	B	8	LEU	N-CA-C	6.12	127.51	111.00
2	B	1	HIS	ND1-CG-CD2	6.11	117.35	108.80
2	B	7	LEU	CB-CG-CD1	5.95	121.12	111.00
2	B	2	LYS	N-CA-CB	5.75	120.95	110.60
2	B	2	LYS	CD-CE-NZ	-5.28	99.55	111.70
2	B	6	ARG	NH1-CZ-NH2	-5.20	113.69	119.40
2	B	4	LEU	CB-CG-CD2	5.11	119.69	111.00
2	B	7	LEU	N-CA-C	5.10	124.78	111.00

All (11) chirality outliers are listed below:

Mol	Chain	Res	Type	Atom
2	B	1	HIS	CA
2	B	2	LYS	CA
2	B	3	ILE	CB,CA
2	B	4	LEU	CA
2	B	5	NLE	CA
2	B	6	ARG	CA
2	B	7	LEU	CA
2	B	8	LEU	CA
2	B	9	HRG	CA
2	B	10	A1IM7	CA

All (6) planarity outliers are listed below:

Mol	Chain	Res	Type	Group
2	B	1	HIS	Peptide
2	B	3	ILE	Peptide
2	B	6	ARG	Sidechain,Peptide
2	B	8	LEU	Peptide
2	B	9	HRG	Peptide

## 5.2 Too-close contacts [i](#)

In the following table, the Non-H and H(model) columns list the number of non-hydrogen atoms and hydrogen atoms in the chain respectively. The H(added) column lists the number of hydrogen

atoms added and optimized by MolProbity. The Clashes column lists the number of clashes within the asymmetric unit, whereas Symm-Clashes lists symmetry-related clashes.

Mol	Chain	Non-H	H(model)	H(added)	Clashes	Symm-Clashes
1	A	1837	0	1865	8	0
2	B	93	0	97	1	0
3	A	26	0	24	1	0
4	A	55	0	0	0	0
All	All	2011	0	1986	9	0

The all-atom clashscore is defined as the number of clashes found per 1000 atoms (including hydrogen atoms). The all-atom clashscore for this structure is 2.

All (9) close contacts within the same asymmetric unit are listed below, sorted by their clash magnitude.

Atom-1	Atom-2	Interatomic distance (Å)	Clash overlap (Å)
1:A:217:ARG:HG3	1:A:295:THR:HG23	1.77	0.66
1:A:262:LYS:HG2	1:A:413:MET:HA	1.89	0.55
1:A:184:VAL:HG11	1:A:361:VAL:HG21	1.91	0.51
1:A:393:GLU:HA	1:A:396:ILE:HD12	1.94	0.50
1:A:235:CYS:SG	1:A:269:LEU:HD22	2.53	0.47
1:A:304:PRO:HD2	1:A:394:ARG:NE	2.31	0.46
1:A:244:LYS:NZ	2:B:10:A1IM7:CB	2.80	0.44
3:A:501:EQN:OAF	3:A:501:EQN:HAH	2.18	0.42
1:A:350:MET:O	1:A:354:PRO:HD3	2.22	0.40

There are no symmetry-related clashes.

## 5.3 Torsion angles ⓘ

### 5.3.1 Protein backbone ⓘ

In the following table, the Percentiles column shows the percent Ramachandran outliers of the chain as a percentile score with respect to all X-ray entries followed by that with respect to entries of similar resolution.

The Analysed column shows the number of residues for which the backbone conformation was analysed, and the total number of residues.

Mol	Chain	Analysed	Favoured	Allowed	Outliers	Percentiles	
1	A	235/236 (100%)	226 (96%)	8 (3%)	1 (0%)	30	29
2	B	6/10 (60%)	0	0	6 (100%)	0	0

*Continued on next page...*

*Continued from previous page...*

Mol	Chain	Analysed	Favoured	Allowed	Outliers	Percentiles
All	All	241/246 (98%)	226 (94%)	8 (3%)	7 (3%)	<b>3</b> <b>1</b>

All (7) Ramachandran outliers are listed below:

Mol	Chain	Res	Type
2	B	3	ILE
2	B	4	LEU
2	B	7	LEU
2	B	8	LEU
2	B	2	LYS
2	B	6	ARG
1	A	403	PRO

### 5.3.2 Protein sidechains ⓘ

In the following table, the Percentiles column shows the percent sidechain outliers of the chain as a percentile score with respect to all X-ray entries followed by that with respect to entries of similar resolution.

The Analysed column shows the number of residues for which the sidechain conformation was analysed, and the total number of residues.

Mol	Chain	Analysed	Rotameric	Outliers	Percentiles
1	A	207/212 (98%)	205 (99%)	2 (1%)	73 79
2	B	7/7 (100%)	3 (43%)	4 (57%)	<b>0</b> <b>0</b>
All	All	214/219 (98%)	208 (97%)	6 (3%)	38 43

All (6) residues with a non-rotameric sidechain are listed below:

Mol	Chain	Res	Type
1	A	181	THR
1	A	385	ARG
2	B	3	ILE
2	B	4	LEU
2	B	7	LEU
2	B	8	LEU

Sometimes sidechains can be flipped to improve hydrogen bonding and reduce clashes. All (1) such sidechains are listed below:

Mol	Chain	Res	Type
1	A	411	GLN

### 5.3.3 RNA ⓘ

There are no RNA molecules in this entry.

## 5.4 Non-standard residues in protein, DNA, RNA chains ⓘ

3 non-standard protein/DNA/RNA residues are modelled in this entry.

In the following table, the Counts columns list the number of bonds (or angles) for which Mogul statistics could be retrieved, the number of bonds (or angles) that are observed in the model and the number of bonds (or angles) that are defined in the Chemical Component Dictionary. The Link column lists molecule types, if any, to which the group is linked. The Z score for a bond length (or angle) is the number of standard deviations the observed value is removed from the expected value. A bond length (or angle) with  $|Z| > 2$  is considered an outlier worth inspection. RMSZ is the root-mean-square of all Z scores of the bond lengths (or angles).

Mol	Type	Chain	Res	Link	Bond lengths			Bond angles		
					Counts	RMSZ	# $ Z  > 2$	Counts	RMSZ	# $ Z  > 2$
2	NLE	B	5	2	6,7,8	2.32	2 (33%)	2,7,9	0.52	0
2	HRG	B	9	2	10,11,12	1.81	2 (20%)	6,12,14	2.24	2 (33%)
2	A1IM7	B	10	2	10,10,10	1.54	2 (20%)	12,12,12	3.07	5 (41%)

In the following table, the Chirals column lists the number of chiral outliers, the number of chiral centers analysed, the number of these observed in the model and the number defined in the Chemical Component Dictionary. Similar counts are reported in the Torsion and Rings columns. '-' means no outliers of that kind were identified.

Mol	Type	Chain	Res	Link	Chirals	Torsions	Rings
2	NLE	B	5	2	1/1/1/2	3/5/6/8	-
2	HRG	B	9	2	1/1/2/4	3/9/10/12	-
2	A1IM7	B	10	2	1/1/3/4	6/11/11/11	-

All (6) bond length outliers are listed below:

Mol	Chain	Res	Type	Atoms	Z	Observed(Å)	Ideal(Å)
2	B	5	NLE	CA-N	-4.35	1.35	1.48
2	B	9	HRG	CA-N	-4.27	1.35	1.48
2	B	5	NLE	CB-CA	-3.43	1.49	1.53
2	B	10	A1IM7	C-N12	2.92	1.37	1.33

*Continued on next page...*

*Continued from previous page...*

Mol	Chain	Res	Type	Atoms	Z	Observed(Å)	Ideal(Å)
2	B	10	A1IM7	CA-N	-2.55	1.35	1.48
2	B	9	HRG	CZ-NE	-2.44	1.28	1.33

All (7) bond angle outliers are listed below:

Mol	Chain	Res	Type	Atoms	Z	Observed(°)	Ideal(°)
2	B	10	A1IM7	CB-CA-C	5.90	123.64	110.85
2	B	10	A1IM7	CB-CG-CD	5.33	126.66	112.51
2	B	9	HRG	NH2-CZ-NE	4.16	128.81	119.19
2	B	10	A1IM7	C17-N12-C	-4.01	115.27	122.22
2	B	10	A1IM7	CB-CA-N	3.91	120.42	110.17
2	B	9	HRG	NH2-CZ-NH1	-2.71	111.91	120.26
2	B	10	A1IM7	OE1-CD-CG	-2.34	115.57	123.08

All (3) chirality outliers are listed below:

Mol	Chain	Res	Type	Atom
2	B	5	NLE	CA
2	B	9	HRG	CA
2	B	10	A1IM7	CA

All (12) torsion outliers are listed below:

Mol	Chain	Res	Type	Atoms
2	B	5	NLE	N-CA-CB-CG
2	B	9	HRG	C-CA-CB-CG'
2	B	9	HRG	NH2-CZ-NE-CD
2	B	10	A1IM7	N12-C-CA-N
2	B	10	A1IM7	N-CA-CB-CG
2	B	9	HRG	NE-CD-CG-CG'
2	B	10	A1IM7	O-C-CA-N
2	B	5	NLE	CE-CD-CG-CB
2	B	10	A1IM7	CA-CB-CG-CD
2	B	5	NLE	CA-CB-CG-CD
2	B	10	A1IM7	OE2-CD-CG-CB
2	B	10	A1IM7	OE1-CD-CG-CB

There are no ring outliers.

1 monomer is involved in 1 short contact:

Mol	Chain	Res	Type	Clashes	Symm-Clashes
2	B	10	A1IM7	1	0

## 5.5 Carbohydrates [i](#)

There are no oligosaccharides in this entry.

## 5.6 Ligand geometry [i](#)

1 ligand is modelled in this entry.

In the following table, the Counts columns list the number of bonds (or angles) for which Mogul statistics could be retrieved, the number of bonds (or angles) that are observed in the model and the number of bonds (or angles) that are defined in the Chemical Component Dictionary. The Link column lists molecule types, if any, to which the group is linked. The Z score for a bond length (or angle) is the number of standard deviations the observed value is removed from the expected value. A bond length (or angle) with  $|Z| > 2$  is considered an outlier worth inspection. RMSZ is the root-mean-square of all Z scores of the bond lengths (or angles).

Mol	Type	Chain	Res	Link	Bond lengths			Bond angles		
					Counts	RMSZ	$\# Z  > 2$	Counts	RMSZ	$\# Z  > 2$
3	EQN	A	501	-	28,28,28	0.93	0	43,43,43	1.13	3 (6%)

In the following table, the Chirals column lists the number of chiral outliers, the number of chiral centers analysed, the number of these observed in the model and the number defined in the Chemical Component Dictionary. Similar counts are reported in the Torsion and Rings columns. '-' means no outliers of that kind were identified.

Mol	Type	Chain	Res	Link	Chirals	Torsions	Rings
3	EQN	A	501	-	-	0/12/31/31	0/3/3/3

There are no bond length outliers.

All (3) bond angle outliers are listed below:

Mol	Chain	Res	Type	Atoms	Z	Observed(°)	Ideal(°)
3	A	501	EQN	CAK-CAI-CAT	3.62	124.48	120.30
3	A	501	EQN	CAI-CAT-CAH	-3.34	114.46	119.03
3	A	501	EQN	CAJ-CAH-CAT	2.32	122.98	120.30

There are no chirality outliers.

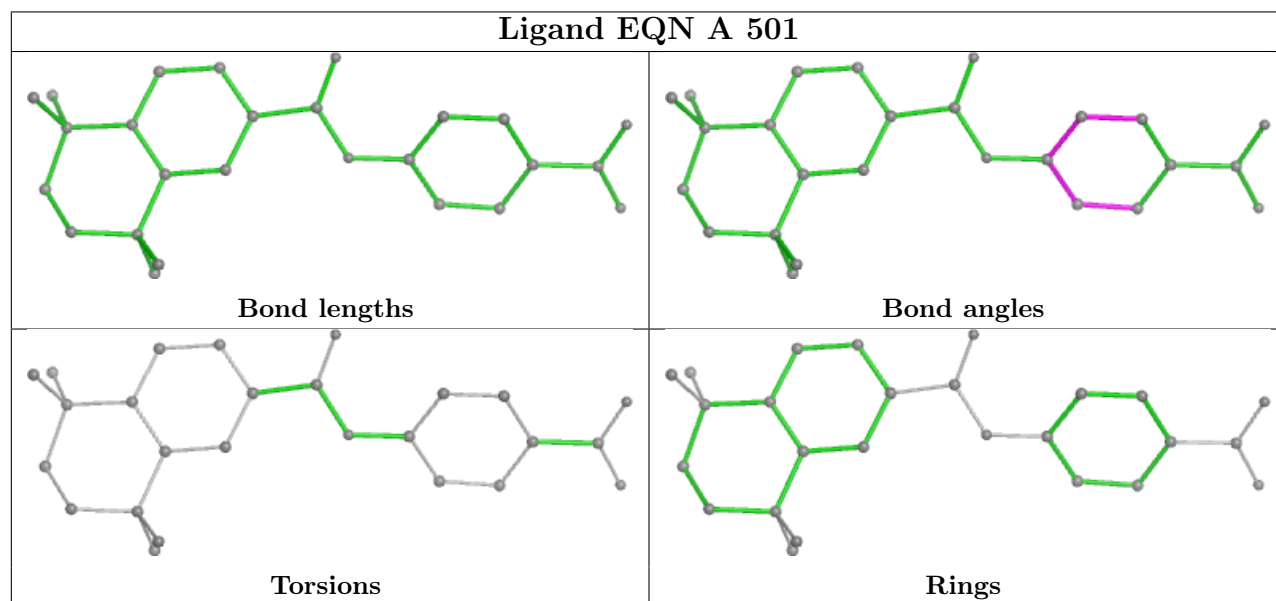
There are no torsion outliers.

There are no ring outliers.

1 monomer is involved in 1 short contact:

Mol	Chain	Res	Type	Clashes	Symm-Clashes
3	A	501	EQN	1	0

The following is a two-dimensional graphical depiction of Mogul quality analysis of bond lengths, bond angles, torsion angles, and ring geometry for all instances of the Ligand of Interest. In addition, ligands with molecular weight > 250 and outliers as shown on the validation Tables will also be included. For torsion angles, if less than 5% of the Mogul distribution of torsion angles is within 10 degrees of the torsion angle in question, then that torsion angle is considered an outlier. Any bond that is central to one or more torsion angles identified as an outlier by Mogul will be highlighted in the graph. For rings, the root-mean-square deviation (RMSD) between the ring in question and similar rings identified by Mogul is calculated over all ring torsion angles. If the average RMSD is greater than 60 degrees and the minimal RMSD between the ring in question and any Mogul-identified rings is also greater than 60 degrees, then that ring is considered an outlier. The outliers are highlighted in purple. The color gray indicates Mogul did not find sufficient equivalents in the CSD to analyse the geometry.



## 5.7 Other polymers [i](#)

There are no such residues in this entry.

## 5.8 Polymer linkage issues [i](#)

There are no chain breaks in this entry.

## 6 Fit of model and data

### 6.1 Protein, DNA and RNA chains

In the following table, the column labelled ‘#RSRZ> 2’ contains the number (and percentage) of RSRZ outliers, followed by percent RSRZ outliers for the chain as percentile scores relative to all X-ray entries and entries of similar resolution. The OWAB column contains the minimum, median, 95<sup>th</sup> percentile and maximum values of the occupancy-weighted average B-factor per residue. The column labelled ‘Q< 0.9’ lists the number of (and percentage) of residues with an average occupancy less than 0.9.

Mol	Chain	Analysed	<RSRZ>	#RSRZ>2	OWAB(Å <sup>2</sup> )	Q<0.9
1	A	236/236 (100%)	0.51	11 (4%) 37 39	26, 49, 82, 97	1 (0%)
2	B	7/10 (70%)	1.05	0 100 100	58, 63, 67, 71	0
All	All	243/246 (98%)	0.52	11 (4%) 39 41	26, 49, 81, 97	1 (0%)

All (11) RSRZ outliers are listed below:

Mol	Chain	Res	Type	RSRZ
1	A	396	ILE	2.7
1	A	395	VAL	2.5
1	A	180	LEU	2.5
1	A	217	ARG	2.4
1	A	391	GLY	2.4
1	A	351	LEU	2.3
1	A	369	SER	2.3
1	A	379	MET	2.3
1	A	397	THR	2.3
1	A	182	PRO	2.2
1	A	392	ALA	2.1

### 6.2 Non-standard residues in protein, DNA, RNA chains

In the following table, the Atoms column lists the number of modelled atoms in the group and the number defined in the chemical component dictionary. The B-factors column lists the minimum, median, 95<sup>th</sup> percentile and maximum values of B factors of atoms in the group. The column labelled ‘Q< 0.9’ lists the number of atoms with occupancy less than 0.9.

Mol	Type	Chain	Res	Atoms	RSCC	RSR	B-factors(Å <sup>2</sup> )	Q<0.9
2	A1IM7	B	10	11/11	0.49	0.17	73,75,76,76	0
2	HRG	B	9	12/13	0.73	0.15	67,69,72,72	0
2	NLE	B	5	8/9	0.86	0.14	60,62,65,66	0



## 6.3 Carbohydrates [i](#)

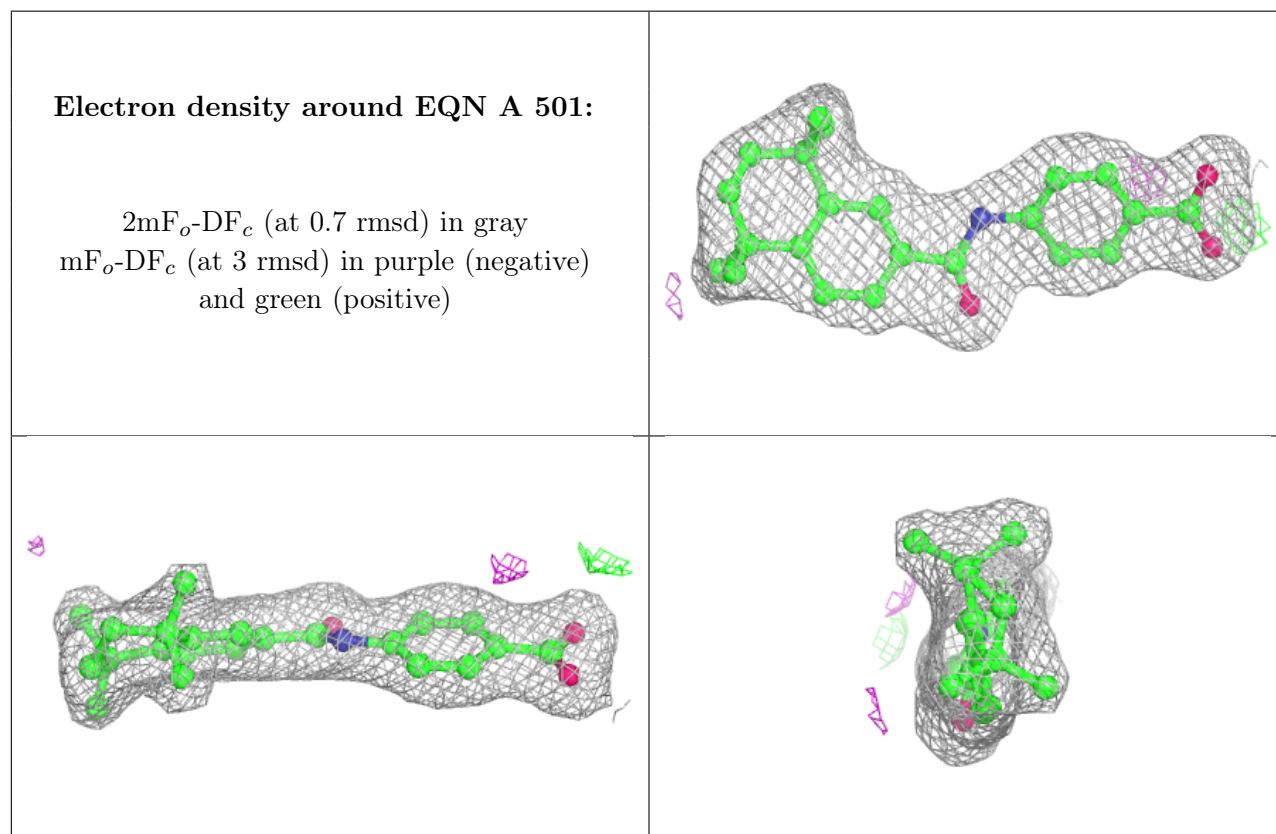
There are no monosaccharides in this entry.

## 6.4 Ligands [i](#)

In the following table, the Atoms column lists the number of modelled atoms in the group and the number defined in the chemical component dictionary. The B-factors column lists the minimum, median, 95<sup>th</sup> percentile and maximum values of B factors of atoms in the group. The column labelled 'Q< 0.9' lists the number of atoms with occupancy less than 0.9.

Mol	Type	Chain	Res	Atoms	RSCC	RSR	B-factors( $\text{\AA}^2$ )	Q<0.9
3	EQN	A	501	26/26	0.95	0.07	28,31,32,32	0

The following is a graphical depiction of the model fit to experimental electron density of all instances of the Ligand of Interest. In addition, ligands with molecular weight > 250 and outliers as shown on the geometry validation Tables will also be included. Each fit is shown from different orientation to approximate a three-dimensional view.



## 6.5 Other polymers [i](#)

There are no such residues in this entry.