



# Full wwPDB X-ray Structure Validation Report ⓘ

Nov 25, 2024 – 06:07 PM EST

PDB ID : 3GC2  
Title : 1.85 Angstrom Crystal Structure of O-succinylbenzoate Synthase from Salmonella typhimurium in Complex with Succinic Acid  
Authors : Minasov, G.; Wawrzak, Z.; Skarina, T.; Onopriyenko, O.; Peterson, S.N.; Savchenko, A.; Anderson, W.F.; Center for Structural Genomics of Infectious Diseases (CSGID); Center for Structural Genomics of Infectious Diseases (CSGID)  
Deposited on : 2009-02-21  
Resolution : 1.85 Å(reported)

This is a Full wwPDB X-ray Structure Validation Report for a publicly released PDB entry.

We welcome your comments at [validation@mail.wwpdb.org](mailto:validation@mail.wwpdb.org)

A user guide is available at

<https://www.wwpdb.org/validation/2017/XrayValidationReportHelp>

with specific help available everywhere you see the ⓘ symbol.

The types of validation reports are described at

<http://www.wwpdb.org/validation/2017/FAQs#types>.

---

The following versions of software and data (see [references ⓘ](#)) were used in the production of this report:

MolProbity	:	4.02b-467
Mogul	:	2022.3.0, CSD as543be (2022)
Xtriage (Phenix)	:	1.21
EDS	:	3.0
Percentile statistics	:	20231227.v01 (using entries in the PDB archive December 27th 2023)
CCP4	:	9.0.004 (Gargrove)
Density-Fitness	:	1.0.11
Ideal geometry (proteins)	:	Engh & Huber (2001)
Ideal geometry (DNA, RNA)	:	Parkinson et al. (1996)

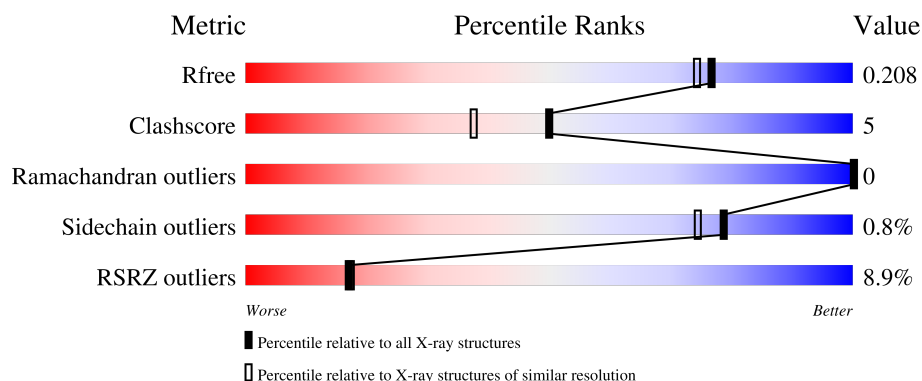
# 1 Overall quality at a glance

The following experimental techniques were used to determine the structure:

*X-RAY DIFFRACTION*

The reported resolution of this entry is 1.85 Å.

Percentile scores (ranging between 0-100) for global validation metrics of the entry are shown in the following graphic. The table shows the number of entries on which the scores are based.



Metric	Whole archive (#Entries)	Similar resolution (#Entries, resolution range(Å))
$R_{free}$	164625	3097 (1.86-1.86)
Clashscore	180529	3359 (1.86-1.86)
Ramachandran outliers	177936	3335 (1.86-1.86)
Sidechain outliers	177891	3335 (1.86-1.86)
RSRZ outliers	164620	3097 (1.86-1.86)

The table below summarises the geometric issues observed across the polymeric chains and their fit to the electron density. The red, orange, yellow and green segments of the lower bar indicate the fraction of residues that contain outliers for  $\geq 3$ , 2, 1 and 0 types of geometric quality criteria respectively. A grey segment represents the fraction of residues that are not modelled. The numeric value for each fraction is indicated below the corresponding segment, with a dot representing fractions  $\leq 5\%$ .

Mol	Chain	Length	Quality of chain
1	A	323	<div> <div>9%</div> <div>88%</div> <div>12%</div> </div>

## 2 Entry composition [i](#)

There are 6 unique types of molecules in this entry. The entry contains 3044 atoms, of which 0 are hydrogens and 0 are deuteriums.

In the tables below, the ZeroOcc column contains the number of atoms modelled with zero occupancy, the AltConf column contains the number of residues with at least one atom in alternate conformation and the Trace column contains the number of residues modelled with at most 2 atoms.

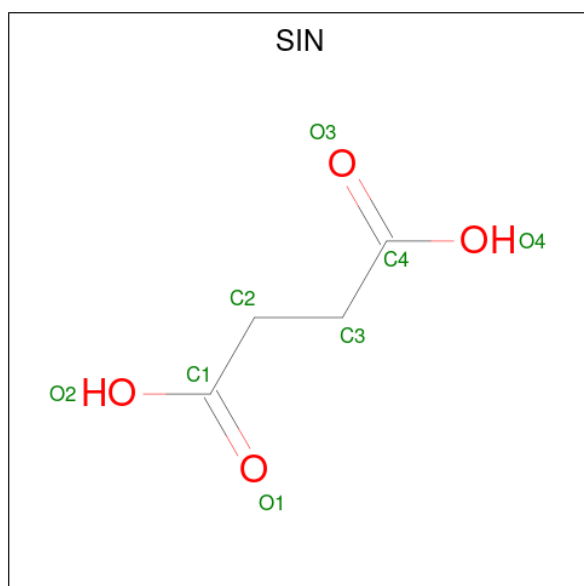
- Molecule 1 is a protein called o-succinylbenzoate synthase.

Mol	Chain	Residues	Atoms						ZeroOcc	AltConf	Trace
			Total	C	N	O	S	Se			
1	A	322	2669	1684	471	502	5	7	0	19	0

There are 3 discrepancies between the modelled and reference sequences:

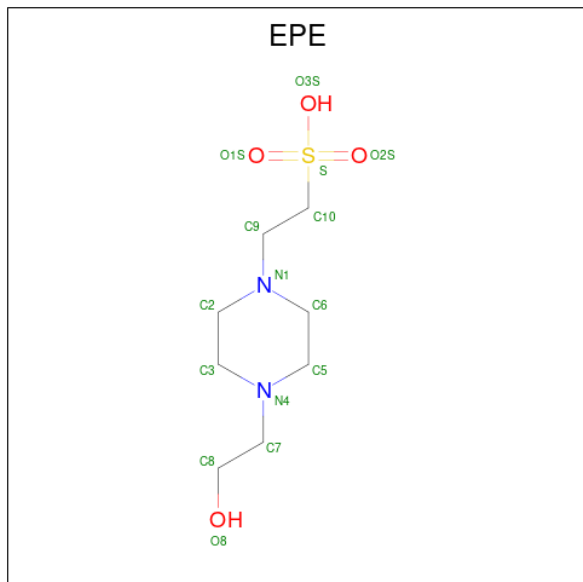
Chain	Residue	Modelled	Actual	Comment	Reference
A	-2	SER	-	expression tag	UNP P58486
A	-1	ASN	-	expression tag	UNP P58486
A	0	ALA	-	expression tag	UNP P58486

- Molecule 2 is SUCCINIC ACID (three-letter code: SIN) (formula: C<sub>4</sub>H<sub>6</sub>O<sub>4</sub>).



Mol	Chain	Residues	Atoms			ZeroOcc	AltConf
2	A	1	Total	C	O	0	1
			8	4	4		
2	A	1	Total	C	O	0	1
			16	8	8		

- Molecule 3 is 4-(2-HYDROXYETHYL)-1-PIPERAZINE ETHANESULFONIC ACID (three-letter code: EPE) (formula: C<sub>8</sub>H<sub>18</sub>N<sub>2</sub>O<sub>4</sub>S).



Mol	Chain	Residues	Atoms					ZeroOcc	AltConf
3	A	1	Total	C	N	O	S	0	0
			15	8	2	4	1		

- Molecule 4 is SODIUM ION (three-letter code: NA) (formula: Na).

Mol	Chain	Residues	Atoms		ZeroOcc	AltConf
4	A	2	Total	Na	0	0
			2	2		

- Molecule 5 is CHLORIDE ION (three-letter code: CL) (formula: Cl).

Mol	Chain	Residues	Atoms		ZeroOcc	AltConf
5	A	2	Total	Cl	0	1
			3	3		

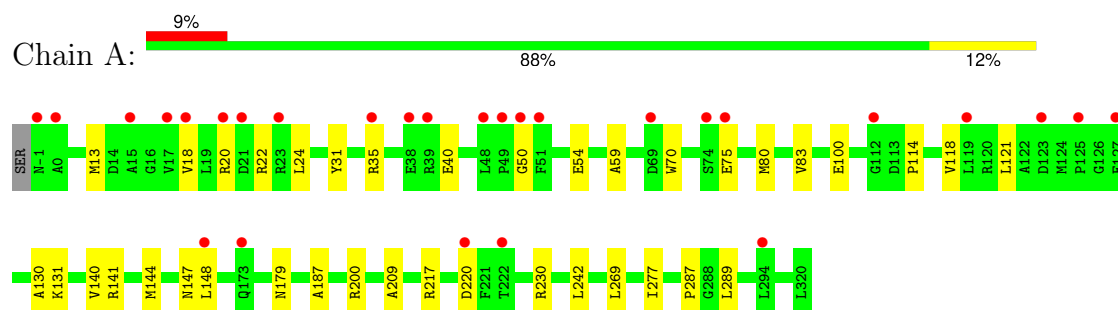
- Molecule 6 is water.

Mol	Chain	Residues	Atoms		ZeroOcc	AltConf
6	A	316	Total	O	0	18
			331	331		

### 3 Residue-property plots [i](#)

These plots are drawn for all protein, RNA, DNA and oligosaccharide chains in the entry. The first graphic for a chain summarises the proportions of the various outlier classes displayed in the second graphic. The second graphic shows the sequence view annotated by issues in geometry. Residues are color-coded according to the number of geometric quality criteria for which they contain at least one outlier: green = 0, yellow = 1, orange = 2 and red = 3 or more. Stretches of 2 or more consecutive residues without any outlier are shown as a green connector. Residues present in the sample, but not in the model, are shown in grey.

- Molecule 1: o-succinylbenzoate synthase



## 4 Data and refinement statistics

Property	Value	Source
Space group	P 43 21 2	Depositor
Cell constants a, b, c, $\alpha$ , $\beta$ , $\gamma$	149.97Å 149.97Å 39.12Å 90.00° 90.00° 90.00°	Depositor
Resolution (Å)	27.07 – 1.85 27.07 – 1.85	Depositor EDS
% Data completeness (in resolution range)	98.8 (27.07-1.85) 98.7 (27.07-1.85)	Depositor EDS
$R_{merge}$	0.08	Depositor
$R_{sym}$	(Not available)	Depositor
$\langle I/\sigma(I) \rangle$ <sup>1</sup>	4.44 (at 1.85Å)	Xtriage
Refinement program	REFMAC 5.5.0044	Depositor
R, $R_{free}$	0.155 , 0.185 0.178 , 0.208	Depositor DCC
$R_{free}$ test set	1915 reflections (5.01%)	wwPDB-VP
Wilson B-factor (Å <sup>2</sup> )	27.1	Xtriage
Anisotropy	0.210	Xtriage
Bulk solvent $k_{sol}$ (e/Å <sup>3</sup> ), $B_{sol}$ (Å <sup>2</sup> )	0.40 , 48.3	EDS
L-test for twinning <sup>2</sup>	$\langle  L  \rangle = 0.49$ , $\langle L^2 \rangle = 0.32$	Xtriage
Estimated twinning fraction	No twinning to report.	Xtriage
$F_o, F_c$ correlation	0.95	EDS
Total number of atoms	3044	wwPDB-VP
Average B, all atoms (Å <sup>2</sup> )	23.0	wwPDB-VP

Xtriage's analysis on translational NCS is as follows: *The largest off-origin peak in the Patterson function is 5.29% of the height of the origin peak. No significant pseudotranslation is detected.*

<sup>1</sup>Intensities estimated from amplitudes.

<sup>2</sup>Theoretical values of  $\langle |L| \rangle$ ,  $\langle L^2 \rangle$  for acentric reflections are 0.5, 0.333 respectively for untwinned datasets, and 0.375, 0.2 for perfectly twinned datasets.

## 5 Model quality [i](#)

### 5.1 Standard geometry [i](#)

Bond lengths and bond angles in the following residue types are not validated in this section: CL, EPE, SIN, NA

The Z score for a bond length (or angle) is the number of standard deviations the observed value is removed from the expected value. A bond length (or angle) with  $|Z| > 5$  is considered an outlier worth inspection. RMSZ is the root-mean-square of all Z scores of the bond lengths (or angles).

Mol	Chain	Bond lengths		Bond angles	
		RMSZ	$\# Z  > 5$	RMSZ	$\# Z  > 5$
1	A	0.46	0/2713	0.65	1/3672 (0.0%)

There are no bond length outliers.

All (1) bond angle outliers are listed below:

Mol	Chain	Res	Type	Atoms	Z	Observed( $^{\circ}$ )	Ideal( $^{\circ}$ )
1	A	200	ARG	NE-CZ-NH2	5.10	122.85	120.30

There are no chirality outliers.

There are no planarity outliers.

### 5.2 Too-close contacts [i](#)

In the following table, the Non-H and H(model) columns list the number of non-hydrogen atoms and hydrogen atoms in the chain respectively. The H(added) column lists the number of hydrogen atoms added and optimized by MolProbity. The Clashes column lists the number of clashes within the asymmetric unit, whereas Symm-Clashes lists symmetry-related clashes.

Mol	Chain	Non-H	H(model)	H(added)	Clashes	Symm-Clashes
1	A	2669	0	2668	28	0
2	A	24	0	12	2	0
3	A	15	0	17	0	0
4	A	2	0	0	0	0
5	A	3	0	0	0	0
6	A	331	0	0	4	0
All	All	3044	0	2697	28	0

The all-atom clashscore is defined as the number of clashes found per 1000 atoms (including hydrogen atoms). The all-atom clashscore for this structure is 5.

All (28) close contacts within the same asymmetric unit are listed below, sorted by their clash magnitude.

Atom-1	Atom-2	Interatomic distance (Å)	Clash overlap (Å)
1:A:54:GLU:HG3	1:A:80[B]:MSE:HE3	1.47	0.96
1:A:59:ALA:HA	1:A:80[B]:MSE:HE1	1.51	0.91
1:A:100[B]:GLU:OE2	2:A:401[B]:SIN:H32	1.71	0.90
1:A:100[B]:GLU:OE2	2:A:401[B]:SIN:C3	2.38	0.71
1:A:59:ALA:CA	1:A:80[B]:MSE:HE1	2.25	0.65
1:A:187:ALA:O	1:A:230[A]:ARG:HD2	1.96	0.64
1:A:70:TRP:HD1	1:A:75:GLU:HB3	1.64	0.62
1:A:147:ASN:ND2	1:A:179:ASN:H	1.97	0.61
1:A:80[B]:MSE:HE2	1:A:83:VAL:HG23	1.83	0.61
1:A:121:LEU:HD11	1:A:130:ALA:HB2	1.83	0.59
1:A:144:MSE:O	1:A:148[B]:LEU:HD13	2.05	0.57
1:A:230[B]:ARG:NH2	6:A:454:HOH:O	2.38	0.57
1:A:31:TYR:CE1	1:A:269[B]:LEU:HD23	2.41	0.56
1:A:114:PRO:O	1:A:118:VAL:HG23	2.08	0.53
1:A:80[B]:MSE:HE2	1:A:83:VAL:CG2	2.41	0.50
1:A:31:TYR:CD1	1:A:269[B]:LEU:HD23	2.48	0.48
1:A:140[A]:VAL:HG23	6:A:500:HOH:O	2.12	0.48
1:A:54:GLU:CG	1:A:80[B]:MSE:HE3	2.33	0.47
1:A:242[B]:LEU:HD21	1:A:277:ILE:HD11	1.97	0.47
1:A:20:ARG:NH1	1:A:50:GLY:O	2.48	0.46
1:A:141:ARG:HD3	1:A:141:ARG:C	2.36	0.45
1:A:209:ALA:CB	1:A:230[B]:ARG:HD2	2.46	0.45
1:A:148[B]:LEU:CD1	6:A:572:HOH:O	2.63	0.45
1:A:18:VAL:HG23	1:A:22:ARG:O	2.18	0.44
1:A:220:ASP:HA	6:A:571:HOH:O	2.17	0.44
1:A:35:ARG:NH1	1:A:40:GLU:OE2	2.51	0.43
1:A:13:MSE:HE2	1:A:24:LEU:HD23	2.02	0.41
1:A:287:PRO:HB2	1:A:289:LEU:HG	2.03	0.40

There are no symmetry-related clashes.

## 5.3 Torsion angles [i](#)

### 5.3.1 Protein backbone [i](#)

In the following table, the Percentiles column shows the percent Ramachandran outliers of the chain as a percentile score with respect to all X-ray entries followed by that with respect to entries of similar resolution.



The Analysed column shows the number of residues for which the backbone conformation was analysed, and the total number of residues.

Mol	Chain	Analysed	Favoured	Allowed	Outliers	Percentiles	
1	A	338/323 (105%)	334 (99%)	4 (1%)	0	100	100

There are no Ramachandran outliers to report.

### 5.3.2 Protein sidechains ⓘ

In the following table, the Percentiles column shows the percent sidechain outliers of the chain as a percentile score with respect to all X-ray entries followed by that with respect to entries of similar resolution.

The Analysed column shows the number of residues for which the sidechain conformation was analysed, and the total number of residues.

Mol	Chain	Analysed	Rotameric	Outliers	Percentiles	
1	A	279/255 (109%)	277 (99%)	2 (1%)	81	78

All (2) residues with a non-rotameric sidechain are listed below:

Mol	Chain	Res	Type
1	A	131	LYS
1	A	217	ARG

Sometimes sidechains can be flipped to improve hydrogen bonding and reduce clashes. All (2) such sidechains are listed below:

Mol	Chain	Res	Type
1	A	147	ASN
1	A	157	HIS

### 5.3.3 RNA ⓘ

There are no RNA molecules in this entry.

## 5.4 Non-standard residues in protein, DNA, RNA chains ⓘ

There are no non-standard protein/DNA/RNA residues in this entry.

## 5.5 Carbohydrates [i](#)

There are no oligosaccharides in this entry.

## 5.6 Ligand geometry [i](#)

Of 9 ligands modelled in this entry, 5 are monoatomic - leaving 4 for Mogul analysis.

In the following table, the Counts columns list the number of bonds (or angles) for which Mogul statistics could be retrieved, the number of bonds (or angles) that are observed in the model and the number of bonds (or angles) that are defined in the Chemical Component Dictionary. The Link column lists molecule types, if any, to which the group is linked. The Z score for a bond length (or angle) is the number of standard deviations the observed value is removed from the expected value. A bond length (or angle) with  $|Z| > 2$  is considered an outlier worth inspection. RMSZ is the root-mean-square of all Z scores of the bond lengths (or angles).

Mol	Type	Chain	Res	Link	Bond lengths			Bond angles		
					Counts	RMSZ	# Z  > 2	Counts	RMSZ	# Z  > 2
3	EPE	A	402	-	15,15,15	1.06	1 (6%)	19,20,20	1.18	2 (10%)
2	SIN	A	401[B]	-	7,7,7	1.07	0	8,8,8	1.62	2 (25%)
2	SIN	A	401[A]	-	7,7,7	0.97	0	8,8,8	1.75	3 (37%)
2	SIN	A	400[A]	-	7,7,7	1.09	0	8,8,8	1.53	2 (25%)

In the following table, the Chirals column lists the number of chiral outliers, the number of chiral centers analysed, the number of these observed in the model and the number defined in the Chemical Component Dictionary. Similar counts are reported in the Torsion and Rings columns. '-' means no outliers of that kind were identified.

Mol	Type	Chain	Res	Link	Chirals	Torsions	Rings
3	EPE	A	402	-	-	5/9/19/19	0/1/1/1
2	SIN	A	401[B]	-	-	4/5/5/5	-
2	SIN	A	401[A]	-	-	2/5/5/5	-
2	SIN	A	400[A]	-	-	2/5/5/5	-

All (1) bond length outliers are listed below:

Mol	Chain	Res	Type	Atoms	Z	Observed(Å)	Ideal(Å)
3	A	402	EPE	C10-S	3.80	1.82	1.77

All (9) bond angle outliers are listed below:

Mol	Chain	Res	Type	Atoms	Z	Observed(°)	Ideal(°)
3	A	402	EPE	O1S-S-C10	-3.96	100.75	106.73
3	A	402	EPE	O3S-S-C10	2.48	110.86	106.00
2	A	401[A]	SIN	C3-C2-C1	-2.37	107.37	113.67
2	A	401[A]	SIN	O4-C4-C3	2.37	121.49	114.00
2	A	400[A]	SIN	O4-C4-C3	2.26	121.14	114.00
2	A	401[B]	SIN	O4-C4-C3	2.23	121.04	114.00
2	A	401[A]	SIN	O2-C1-C2	2.22	121.01	114.00
2	A	400[A]	SIN	O4-C4-O3	-2.13	117.85	123.33
2	A	401[B]	SIN	O2-C1-C2	2.03	120.43	114.00

There are no chirality outliers.

All (13) torsion outliers are listed below:

Mol	Chain	Res	Type	Atoms
3	A	402	EPE	C9-C10-S-O2S
3	A	402	EPE	C9-C10-S-O3S
2	A	401[B]	SIN	C1-C2-C3-C4
3	A	402	EPE	C8-C7-N4-C3
3	A	402	EPE	C9-C10-S-O1S
2	A	401[B]	SIN	C2-C3-C4-O3
2	A	401[B]	SIN	C2-C3-C4-O4
3	A	402	EPE	N4-C7-C8-O8
2	A	401[A]	SIN	O2-C1-C2-C3
2	A	401[A]	SIN	O1-C1-C2-C3
2	A	401[B]	SIN	O2-C1-C2-C3
2	A	400[A]	SIN	C2-C3-C4-O3
2	A	400[A]	SIN	C2-C3-C4-O4

There are no ring outliers.

1 monomer is involved in 2 short contacts:

Mol	Chain	Res	Type	Clashes	Symm-Clashes
2	A	401[B]	SIN	2	0

## 5.7 Other polymers [i](#)

There are no such residues in this entry.

## 5.8 Polymer linkage issues [i](#)

There are no chain breaks in this entry.

## 6 Fit of model and data ⓘ

### 6.1 Protein, DNA and RNA chains ⓘ

**Warning:** The R factor obtained from EDS is 0.2209, which does not match the depositor's R factor of 0.155. Please interpret the results in this section carefully.

In the following table, the column labelled '#RSRZ > 2' contains the number (and percentage) of RSRZ outliers, followed by percent RSRZ outliers for the chain as percentile scores relative to all X-ray entries and entries of similar resolution. The OWAB column contains the minimum, median, 95<sup>th</sup> percentile and maximum values of the occupancy-weighted average B-factor per residue. The column labelled 'Q < 0.9' lists the number of (and percentage) of residues with an average occupancy less than 0.9.

Mol	Chain	Analysed	<RSRZ>	#RSRZ>2	OWAB(Å <sup>2</sup> )	Q<0.9
1	A	316/323 (97%)	0.32	28 (8%) 17 17	7, 19, 36, 58	18 (5%)

All (28) RSRZ outliers are listed below:

Mol	Chain	Res	Type	RSRZ
1	A	18	VAL	4.3
1	A	0	ALA	4.0
1	A	119[A]	LEU	3.8
1	A	74[A]	SER	3.3
1	A	21	ASP	3.2
1	A	-1	ASN	3.1
1	A	15	ALA	3.0
1	A	20	ARG	3.0
1	A	48	LEU	2.9
1	A	112	GLY	2.8
1	A	123	ASP	2.8
1	A	17	VAL	2.8
1	A	38	GLU	2.7
1	A	50	GLY	2.6
1	A	125	PRO	2.5
1	A	127	GLU	2.5
1	A	222	THR	2.4
1	A	294	LEU	2.4
1	A	148[A]	LEU	2.3
1	A	220	ASP	2.3
1	A	35	ARG	2.3
1	A	75	GLU	2.3
1	A	51	PHE	2.2
1	A	23	ARG	2.2

*Continued on next page...*

*Continued from previous page...*

Mol	Chain	Res	Type	RSRZ
1	A	39	ARG	2.1
1	A	49	PRO	2.1
1	A	173	GLN	2.1
1	A	69	ASP	2.0

## 6.2 Non-standard residues in protein, DNA, RNA chains [i](#)

There are no non-standard protein/DNA/RNA residues in this entry.

## 6.3 Carbohydrates [i](#)

There are no monosaccharides in this entry.

## 6.4 Ligands [i](#)

In the following table, the Atoms column lists the number of modelled atoms in the group and the number defined in the chemical component dictionary. The B-factors column lists the minimum, median, 95<sup>th</sup> percentile and maximum values of B factors of atoms in the group. The column labelled 'Q< 0.9' lists the number of atoms with occupancy less than 0.9.

Mol	Type	Chain	Res	Atoms	RSCC	RSR	B-factors( $\text{\AA}^2$ )	Q<0.9
4	NA	A	322	1/1	0.84	0.25	53,53,53,53	0
2	SIN	A	401[A]	8/8	0.85	0.13	37,46,52,53	8
2	SIN	A	401[B]	8/8	0.85	0.13	37,42,44,46	8
2	SIN	A	400[A]	8/8	0.85	0.16	34,41,43,45	8
5	CL	A	324[A]	1/1	0.87	0.15	55,55,55,55	1
5	CL	A	324[B]	1/1	0.87	0.15	43,43,43,43	1
4	NA	A	321	1/1	0.92	0.08	34,34,34,34	0
3	EPE	A	402	15/15	0.92	0.14	35,58,70,73	0
5	CL	A	323	1/1	0.95	0.16	45,45,45,45	0

## 6.5 Other polymers [i](#)

There are no such residues in this entry.