



Full wwPDB EM Validation Report ⓘ

Jun 10, 2024 – 09:27 AM EDT

PDB ID : 8G7E
EMDB ID : EMD-29812
Title : Cryo-EM structure of 3DVA component 0 of Escherichia coli que-PEC (paused elongation complex) RNA Polymerase plus preQ1 ligand
Authors : Porta, J.C.; Chauvier, A.; Deb, I.; Ellinger, E.; Frank, A.T.; Meze, K.; Ohi, M.D.; Walter, N.G.
Deposited on : 2023-02-16
Resolution : 3.90 Å (reported)
Based on initial model : 6ASX

This is a Full wwPDB EM Validation Report for a publicly released PDB entry.

We welcome your comments at validation@mail.wwpdb.org

A user guide is available at

<https://www.wwpdb.org/validation/2017/EMValidationReportHelp>

with specific help available everywhere you see the ⓘ symbol.

The types of validation reports are described at

<http://www.wwpdb.org/validation/2017/FAQs#types>.

The following versions of software and data (see [references ⓘ](#)) were used in the production of this report:

EMDB validation analysis : 0.0.1.dev92
Mogul : 1.8.5 (274361), CSD as541be (2020)
MolProbity : 4.02b-467
buster-report : 1.1.7 (2018)
Percentile statistics : 20191225.v01 (using entries in the PDB archive December 25th 2019)
MapQ : 1.9.13
Ideal geometry (proteins) : Engh & Huber (2001)
Ideal geometry (DNA, RNA) : Parkinson et al. (1996)
Validation Pipeline (wwPDB-VP) : 2.36.2

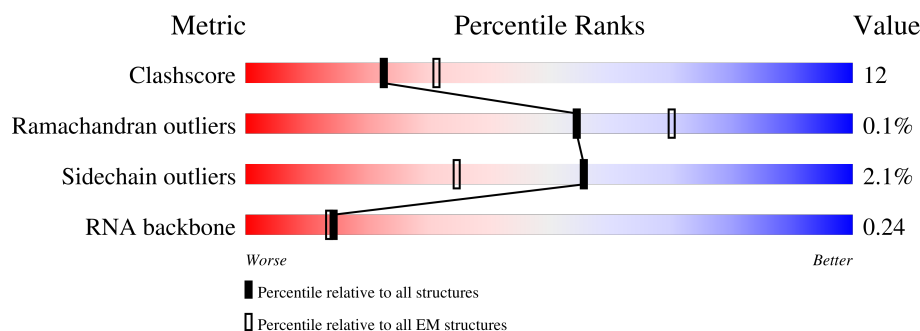
1 Overall quality at a glance i

The following experimental techniques were used to determine the structure:

ELECTRON MICROSCOPY

The reported resolution of this entry is 3.90 Å.

Percentile scores (ranging between 0-100) for global validation metrics of the entry are shown in the following graphic. The table shows the number of entries on which the scores are based.



Metric	Whole archive (#Entries)	EM structures (#Entries)
Clashscore	158937	4297
Ramachandran outliers	154571	4023
Sidechain outliers	154315	3826
RNA backbone	4643	859

The table below summarises the geometric issues observed across the polymeric chains and their fit to the map. The red, orange, yellow and green segments of the bar indicate the fraction of residues that contain outliers for ≥ 3 , 2, 1 and 0 types of geometric quality criteria respectively. A grey segment represents the fraction of residues that are not modelled. The numeric value for each fraction is indicated below the corresponding segment, with a dot representing fractions $\leq 5\%$. The upper red bar (where present) indicates the fraction of residues that have poor fit to the EM map (all-atom inclusion $< 40\%$). The numeric value is given above the bar.

Mol	Chain	Length	Quality of chain
1	A	39	<div> <div>28%</div> <div>13% 36% 51%</div> </div>
2	B	31	<div> <div>39%</div> <div>71% 29%</div> </div>
3	G	235	<div> <div>11%</div> <div>72% 21% 7%</div> </div>
3	H	235	<div> <div>29%</div> <div>63% 29% 7%</div> </div>
4	K	79	<div> <div>28%</div> <div>86% 13%</div> </div>
5	R	47	<div> <div>83%</div> <div>34% 49% 13%</div> </div>
6	I	1341	<div> <div>28%</div> <div>76% 21%</div> </div>

Continued on next page...

Continued from previous page...

Mol	Chain	Length	Quality of chain
7	J	1434	<div><div></div><div>38%</div><div>72%</div><div>21%</div><div>7%</div></div>

2 Entry composition

There are 9 unique types of molecules in this entry. The entry contains 26810 atoms, of which 0 are hydrogens and 0 are deuteriums.

In the tables below, the AltConf column contains the number of residues with at least one atom in alternate conformation and the Trace column contains the number of residues modelled with at most 2 atoms.

- Molecule 1 is a DNA chain called DNA (39-mer).

Mol	Chain	Residues	Atoms					AltConf	Trace
1	A	19	Total	C	N	O	P	0	0
			388	186	78	107	17		

- Molecule 2 is a DNA chain called DNA (31-MER).

Mol	Chain	Residues	Atoms					AltConf	Trace
2	B	31	Total	C	N	O	P	0	0
			631	301	107	192	31		

- Molecule 3 is a protein called DNA-directed RNA polymerase subunit alpha.

Mol	Chain	Residues	Atoms					AltConf	Trace
3	G	218	Total	C	N	O	S	0	0
			1684	1053	300	325	6		
3	H	218	Total	C	N	O	S	0	0
			1685	1052	297	330	6		

There are 2 discrepancies between the modelled and reference sequences:

Chain	Residue	Modelled	Actual	Comment	Reference
G	235	GLU	-	expression tag	UNP A0A5B9AW69
H	235	GLU	-	expression tag	UNP A0A5B9AW69

- Molecule 4 is a protein called DNA-directed RNA polymerase subunit omega.

Mol	Chain	Residues	Atoms					AltConf	Trace
4	K	79	Total	C	N	O	S	0	0
			627	382	118	126	1		

- Molecule 5 is a RNA chain called RNA (47-MER).

Mol	Chain	Residues	Atoms					AltConf	Trace
5	R	47	Total	C	N	O	P	0	0
			997	449	185	317	46		

- Molecule 6 is a protein called DNA-directed RNA polymerase subunit beta.

Mol	Chain	Residues	Atoms					AltConf	Trace
6	I	1316	Total	C	N	O	S	0	0
			10381	6514	1810	2014	43		

- Molecule 7 is a protein called DNA-directed RNA polymerase subunit beta'.

Mol	Chain	Residues	Atoms					AltConf	Trace
7	J	1337	Total	C	N	O	S	0	0
			10403	6536	1856	1961	50		

There are 28 discrepancies between the modelled and reference sequences:

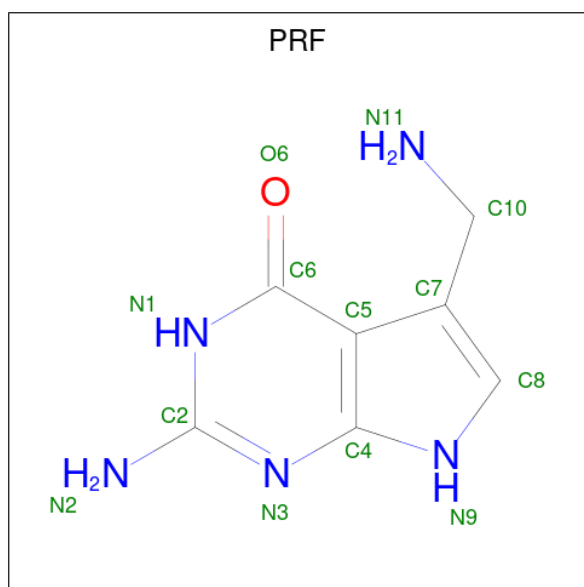
Chain	Residue	Modelled	Actual	Comment	Reference
J	1	VAL	MET	conflict	UNP A7ZUK2
J	1408	LEU	-	expression tag	UNP A7ZUK2
J	1409	ASP	-	expression tag	UNP A7ZUK2
J	1410	ARG	-	expression tag	UNP A7ZUK2
J	1411	ARG	-	expression tag	UNP A7ZUK2
J	1412	ALA	-	expression tag	UNP A7ZUK2
J	1413	SER	-	expression tag	UNP A7ZUK2
J	1414	GLU	-	expression tag	UNP A7ZUK2
J	1415	ASN	-	expression tag	UNP A7ZUK2
J	1416	LEU	-	expression tag	UNP A7ZUK2
J	1417	TYR	-	expression tag	UNP A7ZUK2
J	1418	PHE	-	expression tag	UNP A7ZUK2
J	1419	GLN	-	expression tag	UNP A7ZUK2
J	1420	GLY	-	expression tag	UNP A7ZUK2
J	1421	GLY	-	expression tag	UNP A7ZUK2
J	1422	LEU	-	expression tag	UNP A7ZUK2
J	1423	ASN	-	expression tag	UNP A7ZUK2
J	1424	ASP	-	expression tag	UNP A7ZUK2
J	1425	ILE	-	expression tag	UNP A7ZUK2
J	1426	PHE	-	expression tag	UNP A7ZUK2
J	1427	GLU	-	expression tag	UNP A7ZUK2
J	1428	ALA	-	expression tag	UNP A7ZUK2
J	1429	GLN	-	expression tag	UNP A7ZUK2
J	1430	LYS	-	expression tag	UNP A7ZUK2
J	1431	ILE	-	expression tag	UNP A7ZUK2

Continued on next page...

Continued from previous page...

Chain	Residue	Modelled	Actual	Comment	Reference
J	1432	GLU	-	expression tag	UNP A7ZUK2
J	1433	TRP	-	expression tag	UNP A7ZUK2
J	1434	HIS	-	expression tag	UNP A7ZUK2

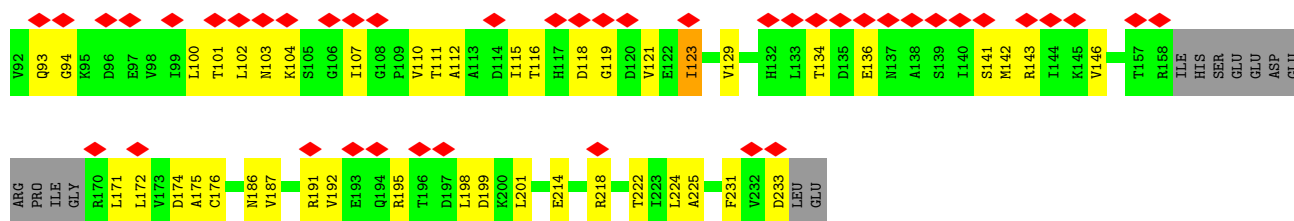
- Molecule 8 is 7-DEAZA-7-AMINOMETHYL-GUANINE (three-letter code: PRF) (formula: $C_7H_9N_5O$) (labeled as "Ligand of Interest" by depositor).



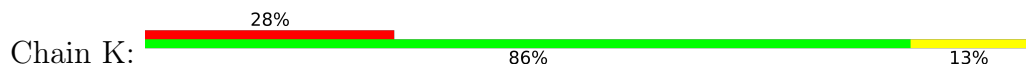
Mol	Chain	Residues	Atoms				AltConf
8	R	1	Total	C	N	O	0
			13	7	5	1	

- Molecule 9 is MAGNESIUM ION (three-letter code: MG) (formula: Mg) (labeled as "Ligand of Interest" by depositor).

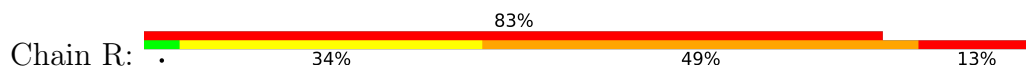
Mol	Chain	Residues	Atoms		AltConf
9	J	1	Total	Mg	0
			1	1	



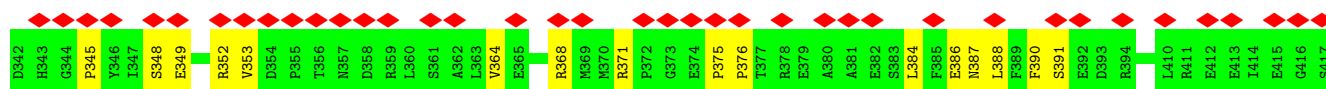
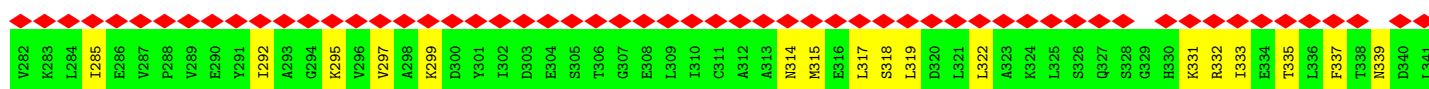
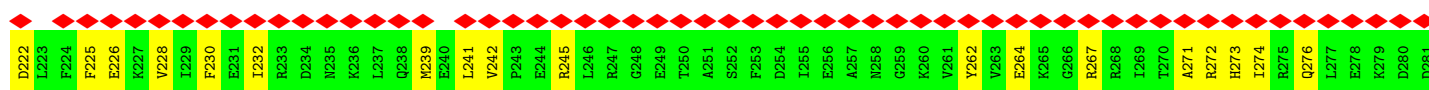
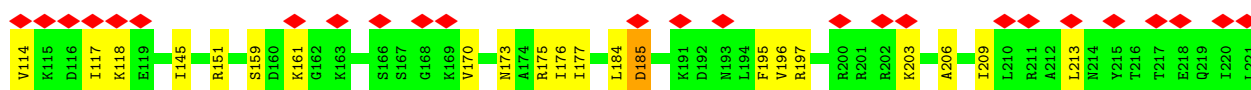
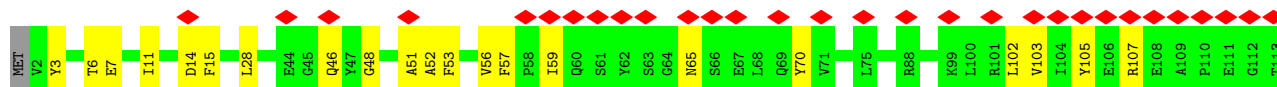
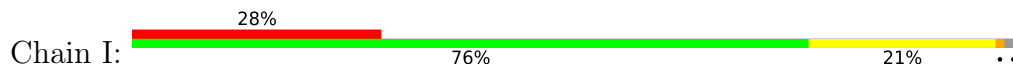
- Molecule 4: DNA-directed RNA polymerase subunit omega



- Molecule 5: RNA (47-MER)



- Molecule 6: DNA-directed RNA polymerase subunit beta





4 Experimental information

Property	Value	Source
EM reconstruction method	SINGLE PARTICLE	Depositor
Imposed symmetry	POINT, Not provided	
Number of particles used	31355	Depositor
Resolution determination method	FSC 0.143 CUT-OFF	Depositor
CTF correction method	PHASE FLIPPING AND AMPLITUDE CORRECTION	Depositor
Microscope	FEI TITAN KRIOS	Depositor
Voltage (kV)	300	Depositor
Electron dose ($e^-/\text{\AA}^2$)	62.00	Depositor
Minimum defocus (nm)	500	Depositor
Maximum defocus (nm)	3500	Depositor
Magnification	Not provided	
Image detector	GATAN K2 SUMMIT (4k x 4k)	Depositor
Maximum map value	1.265	Depositor
Minimum map value	-0.510	Depositor
Average map value	0.013	Depositor
Map value standard deviation	0.044	Depositor
Recommended contour level	0.3	Depositor
Map size (\AA)	300.0, 300.0, 300.0	wwPDB
Map dimensions	300, 300, 300	wwPDB
Map angles ($^\circ$)	90.0, 90.0, 90.0	wwPDB
Pixel spacing (\AA)	1.0, 1.0, 1.0	Depositor

5 Model quality

5.1 Standard geometry

Bond lengths and bond angles in the following residue types are not validated in this section: MG, PRF

The Z score for a bond length (or angle) is the number of standard deviations the observed value is removed from the expected value. A bond length (or angle) with $|Z| > 5$ is considered an outlier worth inspection. RMSZ is the root-mean-square of all Z scores of the bond lengths (or angles).

Mol	Chain	Bond lengths		Bond angles	
		RMSZ	$\# Z > 5$	RMSZ	$\# Z > 5$
1	A	0.50	0/436	0.71	0/670
2	B	0.40	0/704	0.70	0/1084
3	G	0.25	0/1704	0.49	0/2308
3	H	0.35	0/1704	0.53	0/2309
4	K	0.33	0/629	0.52	0/847
5	R	2.94	109/1116 (9.8%)	3.01	179/1736 (10.3%)
6	I	0.37	2/10547 (0.0%)	0.53	3/14232 (0.0%)
7	J	0.28	0/10560	0.49	0/14257
All	All	0.68	111/27400 (0.4%)	0.83	182/37443 (0.5%)

Chiral center outliers are detected by calculating the chiral volume of a chiral center and verifying if the center is modelled as a planar moiety or with the opposite hand. A planarity outlier is detected by checking planarity of atoms in a peptide group, atoms in a mainchain group or atoms of a sidechain that are expected to be planar.

Mol	Chain	#Chirality outliers	#Planarity outliers
5	R	0	13

All (111) bond length outliers are listed below:

Mol	Chain	Res	Type	Atoms	Z	Observed(Å)	Ideal(Å)
6	I	947	GLU	C-N	13.45	1.65	1.34
5	R	13	G	C6-N1	12.38	1.48	1.39
5	R	18	A	N7-C5	-11.81	1.32	1.39
5	R	4	G	N7-C5	-11.62	1.32	1.39
5	R	28	A	C6-N6	11.09	1.42	1.33
5	R	4	G	N1-C2	10.81	1.46	1.37
5	R	27	A	P-O5'	-10.69	1.49	1.59
5	R	1	G	C6-N1	10.63	1.47	1.39
5	R	32	A	C6-N1	10.21	1.42	1.35
5	R	33	C	N1-C6	10.17	1.43	1.37

Continued on next page...

Continued from previous page...

Mol	Chain	Res	Type	Atoms	Z	Observed(Å)	Ideal(Å)
5	R	25	A	C5-C4	10.12	1.45	1.38
5	R	8	U	N3-C4	10.05	1.47	1.38
5	R	24	U	C4-C5	9.87	1.52	1.43
5	R	9	U	N1-C6	9.21	1.46	1.38
5	R	33	C	P-O5'	-9.08	1.50	1.59
5	R	24	U	O3'-P	-9.08	1.50	1.61
5	R	25	A	C6-N6	8.96	1.41	1.33
5	R	25	A	C6-N1	8.95	1.41	1.35
5	R	20	C	C3'-C2'	8.94	1.62	1.52
5	R	32	A	N3-C4	-8.89	1.29	1.34
5	R	21	C	N3-C4	8.81	1.40	1.33
5	R	3	A	C5'-C4'	8.59	1.61	1.51
5	R	13	G	C2'-C1'	-8.57	1.44	1.53
5	R	33	C	N3-C4	8.53	1.40	1.33
6	I	945	ALA	C-N	-8.47	1.14	1.34
5	R	12	A	N7-C5	-8.46	1.34	1.39
5	R	7	G	N7-C5	-8.44	1.34	1.39
5	R	14	C	C5'-C4'	8.41	1.61	1.51
5	R	4	G	C2-N2	8.39	1.43	1.34
5	R	6	G	C2-N3	8.13	1.39	1.32
5	R	12	A	N9-C8	8.11	1.44	1.37
5	R	29	A	C2'-C1'	-8.07	1.44	1.53
5	R	7	G	N9-C4	8.01	1.44	1.38
5	R	18	A	C5'-C4'	7.96	1.60	1.51
5	R	30	A	C6-N6	7.86	1.40	1.33
5	R	22	U	C2-N3	7.84	1.43	1.37
5	R	17	C	C2'-C1'	7.68	1.61	1.53
5	R	6	G	N9-C4	-7.44	1.31	1.38
5	R	15	U	C5'-C4'	7.43	1.60	1.51
5	R	1	G	N1-C2	7.42	1.43	1.37
5	R	4	G	C5'-C4'	7.42	1.60	1.51
5	R	20	C	N1-C6	-7.39	1.32	1.37
5	R	13	G	C8-N7	7.35	1.35	1.30
5	R	3	A	C4'-O4'	-7.32	1.36	1.45
5	R	29	A	C5-C4	7.22	1.43	1.38
5	R	24	U	C3'-C2'	7.21	1.60	1.52
5	R	6	G	C5'-C4'	7.17	1.59	1.51
5	R	8	U	N1-C2	7.15	1.45	1.38
5	R	18	A	C6-N6	6.90	1.39	1.33
5	R	5	A	N9-C4	6.84	1.42	1.37
5	R	31	A	N7-C5	-6.84	1.35	1.39
5	R	27	A	C8-N7	-6.83	1.26	1.31

Continued on next page...

Continued from previous page...

Mol	Chain	Res	Type	Atoms	Z	Observed(Å)	Ideal(Å)
5	R	20	C	O3'-P	-6.80	1.52	1.61
5	R	2	C	N1-C6	6.80	1.41	1.37
5	R	21	C	C5'-C4'	6.79	1.59	1.51
5	R	7	G	N1-C2	6.75	1.43	1.37
5	R	8	U	C4'-O4'	6.73	1.54	1.45
5	R	9	U	N3-C4	6.47	1.44	1.38
5	R	1	G	C2-N3	6.40	1.37	1.32
5	R	14	C	P-O5'	-6.37	1.53	1.59
5	R	9	U	C2'-C1'	-6.36	1.46	1.53
5	R	30	A	N1-C2	-6.34	1.28	1.34
5	R	10	C	N3-C4	6.31	1.38	1.33
5	R	10	C	C1'-N1	6.26	1.58	1.48
5	R	10	C	C2-N3	6.18	1.40	1.35
5	R	32	A	N9-C8	6.14	1.42	1.37
5	R	18	A	C2'-C1'	-6.11	1.46	1.53
5	R	5	A	C4'-C3'	-6.08	1.46	1.53
5	R	11	U	N3-C4	6.06	1.44	1.38
5	R	19	C	P-O5'	-6.05	1.53	1.59
5	R	10	C	N1-C6	6.02	1.40	1.37
5	R	21	C	C4'-C3'	6.02	1.59	1.53
5	R	31	A	C2-N3	6.00	1.39	1.33
5	R	16	A	N1-C2	-5.98	1.28	1.34
5	R	2	C	C2'-C1'	-5.94	1.46	1.53
5	R	7	G	N9-C8	-5.94	1.33	1.37
5	R	10	C	O3'-P	-5.81	1.54	1.61
5	R	21	C	C5-C6	5.79	1.39	1.34
5	R	13	G	C2-N2	5.78	1.40	1.34
5	R	24	U	C2-N3	5.76	1.41	1.37
5	R	14	C	C4-N4	5.71	1.39	1.33
5	R	11	U	C5-C6	-5.67	1.29	1.34
5	R	25	A	N9-C8	5.63	1.42	1.37
5	R	6	G	C6-O6	-5.61	1.19	1.24
5	R	14	C	C2'-C1'	5.61	1.59	1.53
5	R	25	A	N7-C5	-5.59	1.35	1.39
5	R	30	A	C6-N1	5.51	1.39	1.35
5	R	19	C	C4-N4	5.49	1.38	1.33
5	R	20	C	C2-N3	5.47	1.40	1.35
5	R	15	U	C4'-C3'	5.46	1.59	1.53
5	R	12	A	C2'-O2'	-5.46	1.34	1.41
5	R	26	U	C5-C6	5.45	1.39	1.34
5	R	20	C	N3-C4	5.41	1.37	1.33
5	R	15	U	N1-C2	5.38	1.43	1.38

Continued on next page...

Continued from previous page...

Mol	Chain	Res	Type	Atoms	Z	Observed(Å)	Ideal(Å)
5	R	4	G	C2-N3	5.38	1.37	1.32
5	R	24	U	C2'-C1'	-5.37	1.47	1.53
5	R	18	A	N3-C4	5.31	1.38	1.34
5	R	30	A	N3-C4	-5.29	1.31	1.34
5	R	29	A	C3'-O3'	5.24	1.49	1.42
5	R	22	U	C5-C6	-5.22	1.29	1.34
5	R	27	A	C4'-O4'	-5.22	1.38	1.45
5	R	27	A	C5-C6	5.21	1.45	1.41
5	R	25	A	C5'-C4'	5.20	1.57	1.51
5	R	2	C	C2-N3	-5.18	1.31	1.35
5	R	5	A	C6-N6	5.17	1.38	1.33
5	R	8	U	C4-C5	5.12	1.48	1.43
5	R	10	C	P-O5'	-5.10	1.54	1.59
5	R	13	G	N9-C4	5.08	1.42	1.38
5	R	9	U	O3'-P	-5.07	1.55	1.61
5	R	23	C	C2-O2	5.01	1.28	1.24
5	R	19	C	O5'-C5'	5.00	1.52	1.44

All (182) bond angle outliers are listed below:

Mol	Chain	Res	Type	Atoms	Z	Observed(°)	Ideal(°)
5	R	18	A	N1-C6-N6	16.24	128.34	118.60
5	R	27	A	N1-C6-N6	16.08	128.25	118.60
5	R	3	A	N1-C6-N6	14.99	127.59	118.60
5	R	29	A	N1-C6-N6	14.57	127.34	118.60
5	R	14	C	N3-C4-N4	13.81	127.67	118.00
5	R	12	A	N1-C6-N6	13.79	126.87	118.60
5	R	32	A	N1-C6-N6	13.26	126.56	118.60
5	R	16	A	C5-C6-N1	-13.21	111.09	117.70
5	R	16	A	N1-C6-N6	13.02	126.41	118.60
5	R	27	A	C5-C6-N1	-12.91	111.25	117.70
5	R	14	C	N3-C4-C5	-12.30	116.98	121.90
5	R	5	A	N1-C6-N6	12.22	125.94	118.60
5	R	33	C	N3-C4-N4	11.87	126.31	118.00
5	R	29	A	C5-C6-N6	-11.79	114.27	123.70
5	R	21	C	O4'-C1'-N1	11.56	117.44	108.20
5	R	27	A	C4-C5-C6	11.28	122.64	117.00
5	R	3	A	C5-C6-N6	-11.11	114.81	123.70
5	R	6	G	N1-C6-O6	10.97	126.48	119.90
5	R	13	G	C2-N3-C4	10.90	117.35	111.90
5	R	30	A	N1-C6-N6	10.74	125.05	118.60
5	R	6	G	N9-C4-C5	10.67	109.67	105.40

Continued on next page...

Continued from previous page...

Mol	Chain	Res	Type	Atoms	Z	Observed(°)	Ideal(°)
5	R	18	A	C5-C6-N6	-10.35	115.42	123.70
5	R	28	A	N1-C6-N6	10.27	124.76	118.60
5	R	6	G	C4-C5-N7	-9.67	106.93	110.80
5	R	15	U	C6-N1-C2	-9.59	115.25	121.00
6	I	945	ALA	O-C-N	9.50	137.90	122.70
5	R	32	A	C2-N3-C4	9.45	115.32	110.60
5	R	15	U	C2-N1-C1'	9.38	128.96	117.70
5	R	13	G	N3-C4-C5	-9.38	123.91	128.60
5	R	13	G	C5-C6-O6	-9.36	122.99	128.60
5	R	22	U	C2-N3-C4	-9.24	121.46	127.00
5	R	33	C	C5-C4-N4	-9.19	113.77	120.20
5	R	8	U	C2-N3-C4	-9.18	121.49	127.00
5	R	17	C	N3-C4-C5	-9.15	118.24	121.90
5	R	31	A	C5-C6-N1	-9.14	113.13	117.70
5	R	7	G	C8-N9-C4	-9.12	102.75	106.40
5	R	20	C	N3-C4-C5	-9.07	118.27	121.90
5	R	11	U	C5-C6-N1	9.03	127.21	122.70
5	R	11	U	O4'-C1'-N1	9.03	115.42	108.20
5	R	10	C	C2-N3-C4	-8.73	115.53	119.90
5	R	13	G	N3-C4-N9	8.61	131.16	126.00
5	R	28	A	O4'-C1'-N9	8.54	115.03	108.20
5	R	32	A	C5-N7-C8	8.49	108.15	103.90
5	R	3	A	P-O5'-C5'	8.48	134.47	120.90
5	R	20	C	O4'-C1'-N1	8.42	114.94	108.20
5	R	13	G	N1-C6-O6	8.35	124.91	119.90
5	R	19	C	C5'-C4'-O4'	8.29	119.05	109.10
5	R	26	U	N1-C2-O2	-8.25	117.02	122.80
5	R	31	A	C4-C5-N7	-8.12	106.64	110.70
5	R	22	U	O4'-C1'-N1	8.04	114.63	108.20
5	R	26	U	N1-C2-N3	7.99	119.69	114.90
5	R	18	A	C4-C5-C6	7.99	120.99	117.00
5	R	2	C	N3-C4-C5	-7.80	118.78	121.90
5	R	28	A	C5-C6-N6	-7.75	117.50	123.70
5	R	28	A	N1-C2-N3	7.67	133.13	129.30
5	R	17	C	N3-C4-N4	7.66	123.36	118.00
5	R	2	C	C2-N3-C4	7.65	123.73	119.90
5	R	16	A	C4-C5-C6	7.63	120.82	117.00
5	R	29	A	N9-C4-C5	7.63	108.85	105.80
5	R	7	G	N3-C2-N2	7.62	125.24	119.90
5	R	11	U	C1'-O4'-C4'	-7.58	103.83	109.90
5	R	14	C	C2-N3-C4	7.43	123.62	119.90
5	R	32	A	C5-C6-N6	-7.39	117.78	123.70

Continued on next page...

Continued from previous page...

Mol	Chain	Res	Type	Atoms	Z	Observed(°)	Ideal(°)
5	R	18	A	C5-N7-C8	7.37	107.58	103.90
5	R	12	A	C5-N7-C8	7.36	107.58	103.90
5	R	29	A	C2-N3-C4	7.34	114.27	110.60
5	R	31	A	C5-N7-C8	7.29	107.54	103.90
5	R	2	C	O4'-C1'-N1	7.26	114.01	108.20
5	R	5	A	C5-C6-N6	-7.26	117.89	123.70
5	R	7	G	C5-C6-N1	-7.26	107.87	111.50
5	R	30	A	C5-C6-N6	-7.21	117.94	123.70
5	R	14	C	C5-C4-N4	-7.12	115.22	120.20
5	R	12	A	O4'-C1'-N9	7.10	113.88	108.20
5	R	32	A	P-O3'-C3'	7.09	128.21	119.70
5	R	6	G	C5-C6-O6	-7.07	124.36	128.60
5	R	17	C	C4-C5-C6	7.04	120.92	117.40
5	R	31	A	C2-N3-C4	-7.00	107.10	110.60
5	R	7	G	C6-C5-N7	-7.00	126.20	130.40
5	R	5	A	O4'-C1'-N9	6.99	113.80	108.20
5	R	14	C	C2-N1-C1'	6.99	126.49	118.80
5	R	1	G	C4-C5-C6	6.92	122.95	118.80
5	R	22	U	N3-C4-O4	-6.76	114.67	119.40
5	R	2	C	C6-N1-C2	-6.74	117.60	120.30
5	R	12	A	C5-C6-N6	-6.71	118.33	123.70
5	R	28	A	N7-C8-N9	-6.68	110.46	113.80
5	R	21	C	P-O3'-C3'	6.67	127.70	119.70
5	R	4	G	N1-C6-O6	6.63	123.88	119.90
5	R	10	C	N3-C4-C5	6.61	124.54	121.90
5	R	1	G	C5-C6-N1	-6.60	108.20	111.50
5	R	28	A	C2-N3-C4	-6.60	107.30	110.60
5	R	17	C	P-O5'-C5'	6.59	131.45	120.90
5	R	6	G	C4-C5-C6	6.57	122.74	118.80
5	R	7	G	N1-C6-O6	6.55	123.83	119.90
5	R	13	G	C6-C5-N7	-6.54	126.48	130.40
5	R	5	A	C2-N3-C4	-6.47	107.37	110.60
5	R	33	C	O4'-C1'-N1	6.46	113.37	108.20
5	R	18	A	N7-C8-N9	-6.45	110.58	113.80
5	R	1	G	O4'-C1'-N9	6.41	113.33	108.20
5	R	14	C	O4'-C1'-N1	6.40	113.32	108.20
5	R	31	A	C4-C5-C6	6.38	120.19	117.00
5	R	12	A	C4-C5-C6	6.35	120.18	117.00
5	R	29	A	C6-C5-N7	6.35	136.75	132.30
5	R	19	C	N1-C2-O2	6.32	122.69	118.90
5	R	28	A	C4-C5-C6	6.29	120.14	117.00
5	R	1	G	N1-C2-N3	-6.27	120.14	123.90

Continued on next page...

Continued from previous page...

Mol	Chain	Res	Type	Atoms	Z	Observed(°)	Ideal(°)
5	R	32	A	C5'-C4'-O4'	6.23	116.58	109.10
6	I	945	ALA	CA-C-N	-6.16	103.65	117.20
5	R	23	C	O4'-C1'-N1	6.11	113.09	108.20
5	R	31	A	N9-C4-C5	6.10	108.24	105.80
5	R	27	A	C8-N9-C4	-6.08	103.37	105.80
5	R	7	G	C4-C5-C6	6.06	122.44	118.80
5	R	21	C	C2-N3-C4	5.98	122.89	119.90
5	R	22	U	N3-C4-C5	5.96	118.17	114.60
5	R	31	A	P-O3'-C3'	5.95	126.83	119.70
5	R	19	C	C5-C6-N1	5.94	123.97	121.00
5	R	13	G	O4'-C1'-N9	5.93	112.95	108.20
5	R	27	A	N3-C4-C5	-5.93	122.65	126.80
5	R	32	A	P-O5'-C5'	5.86	130.28	120.90
5	R	33	C	N3-C4-C5	-5.84	119.56	121.90
5	R	1	G	C4-C5-N7	-5.82	108.47	110.80
5	R	12	A	C5-C6-N1	-5.82	114.79	117.70
5	R	20	C	C4'-C3'-C2'	-5.79	96.81	102.60
5	R	6	G	P-O3'-C3'	-5.77	112.78	119.70
5	R	12	A	N7-C8-N9	-5.72	110.94	113.80
5	R	31	A	C6-N1-C2	5.69	122.02	118.60
5	R	24	U	C2-N3-C4	-5.69	123.59	127.00
5	R	11	U	C6-N1-C2	-5.68	117.59	121.00
5	R	24	U	C5-C4-O4	-5.66	122.50	125.90
5	R	28	A	C5-N7-C8	5.65	106.72	103.90
5	R	5	A	N1-C2-N3	5.63	132.12	129.30
5	R	20	C	C3'-C2'-C1'	5.63	106.00	101.50
5	R	19	C	N3-C4-N4	5.62	121.93	118.00
5	R	19	C	C2-N3-C4	5.60	122.70	119.90
5	R	6	G	O4'-C1'-N9	5.59	112.67	108.20
5	R	9	U	N1-C2-O2	-5.58	118.89	122.80
5	R	26	U	C2-N3-C4	-5.58	123.65	127.00
5	R	19	C	O5'-P-OP2	5.58	117.39	110.70
5	R	13	G	C3'-C2'-C1'	5.57	105.96	101.50
5	R	19	C	C5-C4-N4	-5.56	116.31	120.20
5	R	23	C	C5-C4-N4	-5.54	116.32	120.20
5	R	23	C	N3-C4-N4	5.53	121.87	118.00
5	R	4	G	N1-C2-N3	-5.52	120.59	123.90
5	R	4	G	O4'-C1'-N9	5.52	112.62	108.20
5	R	25	A	C5-C6-N1	5.47	120.44	117.70
5	R	31	A	N1-C6-N6	5.46	121.88	118.60
5	R	29	A	C4-C5-N7	-5.45	107.97	110.70
5	R	25	A	C5-N7-C8	5.45	106.62	103.90

Continued on next page...

Continued from previous page...

Mol	Chain	Res	Type	Atoms	Z	Observed(°)	Ideal(°)
5	R	28	A	P-O3'-C3'	5.44	126.22	119.70
5	R	11	U	C2-N1-C1'	5.41	124.20	117.70
5	R	32	A	O4'-C1'-N9	5.40	112.52	108.20
5	R	12	A	N1-C2-N3	-5.40	126.60	129.30
5	R	12	A	C6-N1-C2	5.38	121.83	118.60
5	R	23	C	C4'-C3'-C2'	-5.38	97.22	102.60
5	R	4	G	C8-N9-C4	-5.38	104.25	106.40
5	R	27	A	O4'-C1'-N9	5.37	112.49	108.20
5	R	9	U	N3-C4-C5	-5.32	111.41	114.60
5	R	6	G	N3-C4-C5	-5.31	125.94	128.60
5	R	22	U	P-O5'-C5'	5.30	129.38	120.90
5	R	4	G	OP1-P-OP2	-5.30	111.66	119.60
5	R	2	C	C2-N1-C1'	5.29	124.62	118.80
5	R	15	U	C5-C6-N1	5.29	125.34	122.70
5	R	20	C	C4-C5-C6	5.28	120.04	117.40
5	R	4	G	N3-C2-N2	5.28	123.59	119.90
5	R	29	A	C8-N9-C4	-5.27	103.69	105.80
5	R	14	C	C5-C6-N1	5.25	123.63	121.00
5	R	13	G	C1'-O4'-C4'	-5.24	105.71	109.90
5	R	19	C	O4'-C1'-N1	5.21	112.37	108.20
5	R	30	A	O4'-C1'-N9	5.18	112.34	108.20
5	R	12	A	N3-C4-C5	-5.17	123.18	126.80
5	R	16	A	C6-C5-N7	-5.16	128.69	132.30
6	I	945	ALA	C-N-CA	-5.15	108.83	121.70
5	R	3	A	C4-C5-C6	5.14	119.57	117.00
5	R	17	C	O4'-C1'-N1	5.13	112.31	108.20
5	R	7	G	N9-C1'-C2'	-5.12	106.37	112.00
5	R	8	U	N3-C4-C5	5.12	117.67	114.60
5	R	22	U	C6-N1-C2	5.12	124.07	121.00
5	R	4	G	C5-C6-O6	-5.11	125.54	128.60
5	R	3	A	C2-N3-C4	5.08	113.14	110.60
5	R	6	G	O4'-C4'-C3'	-5.06	98.94	104.00
5	R	14	C	C6-N1-C1'	-5.05	114.73	120.80
5	R	31	A	N3-C4-N9	-5.05	123.36	127.40
5	R	25	A	C8-N9-C4	-5.05	103.78	105.80

There are no chirality outliers.

All (13) planarity outliers are listed below:

Mol	Chain	Res	Type	Group
5	R	1	G	Sidechain
5	R	10	C	Sidechain

Continued on next page...

Continued from previous page...

Mol	Chain	Res	Type	Group
5	R	12	A	Sidechain
5	R	13	G	Sidechain
5	R	19	C	Sidechain
5	R	21	C	Sidechain
5	R	23	C	Sidechain
5	R	24	U	Sidechain
5	R	30	A	Sidechain
5	R	31	A	Sidechain
5	R	4	G	Sidechain
5	R	7	G	Sidechain
5	R	9	U	Sidechain

5.2 Too-close contacts

In the following table, the Non-H and H(model) columns list the number of non-hydrogen atoms and hydrogen atoms in the chain respectively. The H(added) column lists the number of hydrogen atoms added and optimized by MolProbity. The Clashes column lists the number of clashes within the asymmetric unit, whereas Symm-Clashes lists symmetry-related clashes.

Mol	Chain	Non-H	H(model)	H(added)	Clashes	Symm-Clashes
1	A	388	0	216	20	0
2	B	631	0	352	8	0
3	G	1684	0	1726	40	0
3	H	1685	0	1718	84	0
4	K	627	0	634	8	0
5	R	997	0	510	11	0
6	I	10381	0	10389	267	0
7	J	10403	0	10636	275	0
8	R	13	0	9	0	0
9	J	1	0	0	0	0
All	All	26810	0	26190	647	0

The all-atom clashscore is defined as the number of clashes found per 1000 atoms (including hydrogen atoms). The all-atom clashscore for this structure is 12.

All (647) close contacts within the same asymmetric unit are listed below, sorted by their clash magnitude.

Atom-1	Atom-2	Interatomic distance (Å)	Clash overlap (Å)
6:I:519:ASN:ND2	6:I:796:LEU:CD2	1.72	1.52
7:J:56:LEU:HB3	7:J:250:ARG:NH2	1.18	1.47

Continued on next page...

Continued from previous page...

Atom-1	Atom-2	Interatomic distance (Å)	Clash overlap (Å)
7:J:69:GLU:HG2	7:J:76:LYS:CD	1.59	1.29
6:I:161:LYS:CD	6:I:170:VAL:HG22	1.63	1.27
6:I:1113:LEU:CD2	7:J:641:ILE:HD11	1.62	1.27
6:I:519:ASN:ND2	6:I:796:LEU:HD22	1.40	1.25
6:I:46:GLN:O	6:I:51:ALA:HB2	1.18	1.23
6:I:514:PHE:CZ	6:I:760:ASN:HB3	1.74	1.23
6:I:1246:ARG:NH2	6:I:1265:PHE:CE1	2.07	1.22
6:I:161:LYS:HD3	6:I:170:VAL:CG2	1.73	1.18
7:J:56:LEU:CB	7:J:250:ARG:NH2	2.08	1.16
3:H:101:THR:HG22	3:H:143:ARG:HG2	1.24	1.12
7:J:56:LEU:CB	7:J:250:ARG:HH22	1.61	1.12
7:J:263:SER:CB	7:J:266:ASN:HD22	1.62	1.12
6:I:1246:ARG:CZ	6:I:1265:PHE:CE1	2.34	1.11
6:I:161:LYS:HD3	6:I:170:VAL:HG22	1.15	1.10
6:I:975:ILE:O	6:I:979:LEU:HD13	1.49	1.10
6:I:46:GLN:O	6:I:51:ALA:CB	2.00	1.10
3:H:16:ILE:HG12	3:H:26:VAL:HG12	1.27	1.10
6:I:1113:LEU:HD21	7:J:641:ILE:HD11	1.25	1.09
6:I:514:PHE:CE2	6:I:760:ASN:HB3	1.89	1.06
7:J:69:GLU:CG	7:J:76:LYS:HD2	1.85	1.06
7:J:69:GLU:HG2	7:J:76:LYS:HD3	1.06	1.05
6:I:519:ASN:CG	6:I:796:LEU:CD2	2.24	1.05
7:J:69:GLU:CG	7:J:76:LYS:CD	2.34	1.05
6:I:519:ASN:HD21	6:I:796:LEU:CD2	1.53	1.02
7:J:72:CYS:SG	7:J:88:CYS:HB3	2.01	1.01
6:I:1113:LEU:HD21	7:J:641:ILE:CD1	1.91	1.00
7:J:77:ARG:HE	7:J:80:HIS:CE1	1.79	0.99
7:J:805:GLN:NE2	7:J:1347:LEU:HD22	1.76	0.99
6:I:514:PHE:CZ	6:I:760:ASN:CB	2.46	0.98
7:J:836:ARG:HG2	7:J:869:CYS:SG	2.04	0.98
6:I:161:LYS:CD	6:I:170:VAL:CG2	2.39	0.96
7:J:250:ARG:HD2	7:J:266:ASN:OD1	1.65	0.96
3:H:115:ILE:O	3:H:116:THR:HG22	1.64	0.96
6:I:519:ASN:ND2	6:I:796:LEU:HD23	1.79	0.95
7:J:56:LEU:HB3	7:J:250:ARG:CZ	1.97	0.94
3:H:115:ILE:HG21	3:H:123:ILE:HD11	1.46	0.94
6:I:519:ASN:ND2	6:I:796:LEU:HD21	1.83	0.93
3:H:101:THR:O	3:H:116:THR:HG22	1.69	0.93
7:J:1158:GLU:OE1	7:J:1222:ARG:NH2	2.00	0.93
6:I:1113:LEU:CD2	7:J:641:ILE:CD1	2.47	0.92
6:I:175:ARG:HG2	6:I:185:ASP:OD2	1.69	0.92

Continued on next page...

Continued from previous page...

Atom-1	Atom-2	Interatomic distance (Å)	Clash overlap (Å)
3:H:90:VAL:HB	3:H:121:VAL:HG13	1.52	0.92
7:J:56:LEU:HD22	7:J:250:ARG:HH12	1.33	0.92
3:G:150:ARG:HD2	3:H:8:PHE:CZ	2.04	0.91
3:H:16:ILE:HD13	3:H:214:GLU:HG2	1.52	0.91
6:I:1113:LEU:HD22	7:J:641:ILE:HD11	1.54	0.90
6:I:1246:ARG:NH2	6:I:1265:PHE:HE1	1.64	0.89
7:J:210:SER:O	7:J:214:ARG:CD	2.20	0.89
6:I:1005:GLU:HG2	6:I:1008:GLN:HB2	1.54	0.89
6:I:1246:ARG:NE	6:I:1265:PHE:CD1	2.40	0.88
7:J:1221:LEU:HB2	7:J:1229:VAL:HG21	1.56	0.87
1:A:29:DA:H61	2:B:10:DT:H3	1.22	0.87
3:H:101:THR:HG22	3:H:143:ARG:CG	2.04	0.86
6:I:519:ASN:CG	6:I:796:LEU:HD23	1.96	0.86
6:I:1030:GLU:O	6:I:1034:ARG:HG3	1.74	0.86
7:J:805:GLN:HE21	7:J:1347:LEU:HD22	1.36	0.86
7:J:1158:GLU:CD	7:J:1222:ARG:HH21	1.78	0.86
3:H:90:VAL:HB	3:H:121:VAL:CG1	2.06	0.85
3:H:101:THR:O	3:H:116:THR:CG2	2.24	0.85
6:I:519:ASN:HD21	6:I:796:LEU:HD22	1.09	0.85
6:I:161:LYS:CG	6:I:170:VAL:HG22	2.07	0.85
6:I:384:LEU:HD21	6:I:388:LEU:HD11	1.59	0.83
3:H:214:GLU:O	3:H:218:ARG:HG3	1.78	0.83
1:A:10:DG:C5'	7:J:45:ASN:ND2	2.41	0.83
3:G:150:ARG:NE	3:H:8:PHE:CE1	2.47	0.82
6:I:173:ASN:HD21	6:I:175:ARG:NH1	1.76	0.82
6:I:384:LEU:CD2	6:I:388:LEU:HD11	2.09	0.82
7:J:1165:PHE:CZ	7:J:1173:ARG:HD2	2.14	0.82
6:I:519:ASN:CG	6:I:796:LEU:HD21	1.98	0.82
5:R:47:A:O2'	7:J:464:ASP:OD2	1.96	0.81
3:H:192:VAL:HG23	3:H:198:LEU:HD12	1.63	0.81
7:J:263:SER:HB3	7:J:266:ASN:HD22	1.45	0.81
7:J:1367:GLN:HE21	7:J:1371:ARG:NH2	1.80	0.80
6:I:968:GLU:HB3	6:I:972:PHE:CE2	2.18	0.79
6:I:997:TRP:CZ3	6:I:1002:LEU:CB	2.66	0.79
7:J:56:LEU:HB3	7:J:250:ARG:HH22	0.97	0.78
7:J:839:VAL:CG1	7:J:864:LEU:CD1	2.61	0.78
6:I:384:LEU:HD23	6:I:388:LEU:HD12	1.65	0.78
3:H:16:ILE:HG12	3:H:26:VAL:CG1	2.12	0.78
6:I:997:TRP:CZ3	6:I:1002:LEU:HB2	2.19	0.77
6:I:514:PHE:HZ	6:I:760:ASN:CB	1.96	0.77
3:G:150:ARG:HD2	3:H:8:PHE:HZ	1.50	0.77

Continued on next page...

Continued from previous page...

Atom-1	Atom-2	Interatomic distance (Å)	Clash overlap (Å)
6:I:968:GLU:HB3	6:I:972:PHE:CD2	2.19	0.77
6:I:560:PRO:HB2	7:J:776:THR:HG21	1.66	0.76
3:H:47:LEU:HA	3:H:51:MET:HG3	1.68	0.76
7:J:1173:ARG:NH2	7:J:1196:LEU:HB2	2.01	0.76
6:I:371:ARG:HE	6:I:384:LEU:HD12	1.50	0.75
6:I:384:LEU:HD23	6:I:388:LEU:CD1	2.16	0.75
3:H:93:GLN:HG2	3:H:94:GLY:H	1.52	0.75
3:H:115:ILE:O	3:H:116:THR:CG2	2.35	0.75
6:I:808:ASN:H	7:J:633:ALA:HB2	1.52	0.75
6:I:384:LEU:CD2	6:I:388:LEU:CD1	2.65	0.74
7:J:263:SER:CB	7:J:266:ASN:ND2	2.46	0.74
7:J:1347:LEU:O	7:J:1347:LEU:HD23	1.86	0.74
7:J:77:ARG:HE	7:J:80:HIS:HE1	1.36	0.74
3:H:59:VAL:HG21	3:H:85:LEU:HD13	1.69	0.74
6:I:173:ASN:ND2	6:I:175:ARG:NH1	2.35	0.73
3:H:116:THR:HG23	3:H:116:THR:O	1.86	0.73
6:I:816:ILE:HG12	6:I:1098:LEU:HD23	1.70	0.73
7:J:69:GLU:HG3	7:J:76:LYS:HD2	1.71	0.73
7:J:839:VAL:HG12	7:J:864:LEU:CD1	2.18	0.73
6:I:161:LYS:HD3	6:I:170:VAL:HG21	1.69	0.72
6:I:519:ASN:OD1	6:I:796:LEU:HD23	1.88	0.72
6:I:972:PHE:CE1	6:I:995:ASP:HB3	2.25	0.72
7:J:1165:PHE:CE2	7:J:1173:ARG:HD2	2.23	0.72
6:I:976:ARG:HH21	6:I:994:ARG:HG3	1.54	0.72
6:I:976:ARG:O	6:I:979:LEU:N	2.22	0.72
7:J:68:TYR:HB3	7:J:78:LEU:HG	1.69	0.72
7:J:1048:ARG:HG3	7:J:1059:LEU:HG	1.72	0.71
7:J:836:ARG:CG	7:J:869:CYS:SG	2.79	0.71
7:J:709:ARG:HD3	7:J:714:GLU:OE1	1.90	0.71
6:I:175:ARG:HG2	6:I:185:ASP:CG	2.11	0.70
6:I:452:ARG:HG3	6:I:585:GLY:C	2.11	0.70
2:B:24:DT:H3	5:R:39:A:H61	1.38	0.70
7:J:1035:VAL:HB	7:J:1115:ILE:HD11	1.72	0.70
7:J:1173:ARG:NH2	7:J:1196:LEU:HD13	2.07	0.70
6:I:1246:ARG:CZ	6:I:1265:PHE:CD1	2.74	0.70
6:I:689:ALA:HB2	6:I:1233:LEU:HD13	1.73	0.70
6:I:1111:GLN:HB2	6:I:1230:MET:CE	2.22	0.70
3:G:150:ARG:CD	3:H:8:PHE:CZ	2.75	0.69
6:I:1111:GLN:HB2	6:I:1230:MET:HE1	1.74	0.69
7:J:210:SER:O	7:J:214:ARG:HG3	1.92	0.69
7:J:77:ARG:HD2	7:J:79:LYS:HB3	1.73	0.69

Continued on next page...

Continued from previous page...

Atom-1	Atom-2	Interatomic distance (Å)	Clash overlap (Å)
7:J:250:ARG:CD	7:J:266:ASN:OD1	2.40	0.69
7:J:138:VAL:HG21	7:J:145:VAL:HG22	1.75	0.69
3:H:57:THR:HG22	3:H:175:ALA:CB	2.22	0.69
3:H:218:ARG:O	3:H:222:THR:HG23	1.93	0.69
7:J:250:ARG:HG3	7:J:250:ARG:O	1.92	0.69
7:J:1063:ASP:HA	7:J:1103:GLY:HA3	1.75	0.69
6:I:997:TRP:CZ3	6:I:1002:LEU:HB3	2.28	0.69
7:J:839:VAL:CG1	7:J:864:LEU:HD13	2.23	0.69
1:A:10:DG:H5''	7:J:45:ASN:ND2	2.07	0.68
6:I:230:PHE:HB2	6:I:333:ILE:HB	1.76	0.68
6:I:232:ILE:HB	6:I:331:LYS:HD3	1.75	0.68
1:A:10:DG:C5'	7:J:45:ASN:HD21	2.06	0.67
6:I:976:ARG:O	6:I:978:VAL:N	2.27	0.67
7:J:77:ARG:O	7:J:78:LEU:HB2	1.94	0.67
3:G:82:LEU:HD12	3:G:173:VAL:HB	1.77	0.67
6:I:161:LYS:HG3	6:I:170:VAL:HG22	1.77	0.67
7:J:93:THR:HG22	7:J:94:GLN:H	1.59	0.67
7:J:1089:LEU:HA	7:J:1096:PRO:HA	1.76	0.67
7:J:77:ARG:NE	7:J:80:HIS:CE1	2.57	0.67
7:J:1367:GLN:NE2	7:J:1371:ARG:NH2	2.42	0.67
6:I:514:PHE:CZ	6:I:760:ASN:CG	2.69	0.66
3:H:79:LEU:HD11	7:J:526:VAL:HG21	1.76	0.66
7:J:210:SER:O	7:J:214:ARG:HD3	1.95	0.66
7:J:506:VAL:HG23	7:J:628:GLY:HA3	1.78	0.66
7:J:706:VAL:HG12	7:J:715:LYS:HD3	1.76	0.66
6:I:3:TYR:HB3	6:I:7:GLU:HB3	1.78	0.66
7:J:514:THR:HG21	7:J:596:LEU:HD12	1.78	0.66
7:J:1221:LEU:HD22	7:J:1306:LEU:HB2	1.78	0.66
7:J:210:SER:O	7:J:214:ARG:CG	2.44	0.66
7:J:839:VAL:HG12	7:J:864:LEU:HD13	1.76	0.66
3:G:150:ARG:NE	3:H:8:PHE:HE1	1.94	0.65
7:J:1025:MET:HB2	7:J:1124:ILE:HB	1.78	0.65
3:H:57:THR:HG22	3:H:175:ALA:HB2	1.78	0.65
7:J:1105:ALA:HB1	7:J:1122:ALA:HB1	1.77	0.65
6:I:1017:GLN:O	6:I:1021:LEU:N	2.29	0.65
3:G:150:ARG:CD	3:H:8:PHE:CE1	2.80	0.65
7:J:1040:MET:HG2	7:J:1076:PRO:HA	1.79	0.65
6:I:733:VAL:HG13	6:I:748:ILE:CG2	2.26	0.65
7:J:77:ARG:CD	7:J:79:LYS:HB3	2.25	0.64
7:J:255:LEU:HG	7:J:255:LEU:O	1.96	0.64
6:I:720:ARG:HD2	6:I:740:GLU:HB3	1.79	0.64

Continued on next page...

Continued from previous page...

Atom-1	Atom-2	Interatomic distance (Å)	Clash overlap (Å)
3:H:100:LEU:HD21	3:H:121:VAL:HG21	1.78	0.64
7:J:706:VAL:HG12	7:J:715:LYS:CD	2.28	0.64
6:I:103:VAL:HB	6:I:114:VAL:HG11	1.79	0.64
7:J:1067:ARG:O	7:J:1072:LYS:NZ	2.31	0.64
3:G:74:VAL:HG11	3:G:81:ILE:HD11	1.78	0.64
7:J:1109:LEU:HD22	7:J:1115:ILE:HG12	1.80	0.64
7:J:460:ASP:OD2	7:J:462:ASP:CG	2.37	0.63
6:I:145:ILE:HB	6:I:456:VAL:HG22	1.79	0.63
6:I:1246:ARG:CZ	6:I:1265:PHE:CZ	2.81	0.63
1:A:32:DT:H2'	1:A:33:DT:C6	2.33	0.63
7:J:263:SER:HB3	7:J:266:ASN:ND2	2.13	0.63
6:I:1286:THR:HA	6:I:1289:GLU:HG2	1.81	0.63
3:H:16:ILE:HD13	3:H:214:GLU:CG	2.28	0.63
6:I:617:ALA:HB2	6:I:650:VAL:HG21	1.80	0.63
7:J:1036:ARG:NH1	7:J:1038:THR:OG1	2.32	0.62
7:J:799:ARG:NH1	7:J:1146:GLU:OE2	2.32	0.62
7:J:1173:ARG:HH21	7:J:1196:LEU:HD13	1.64	0.62
3:H:107:ILE:HG13	3:H:136:GLU:CG	2.29	0.62
3:G:150:ARG:HD2	3:H:8:PHE:CE1	2.33	0.62
6:I:159:SER:HB2	6:I:442:VAL:HG11	1.82	0.62
6:I:960:LEU:HD22	6:I:1029:LEU:HD13	1.82	0.62
6:I:1018:TYR:C	6:I:1020:GLU:H	2.04	0.62
6:I:969:ALA:O	6:I:973:SER:OG	2.16	0.61
7:J:56:LEU:HD22	7:J:250:ARG:NH1	2.09	0.61
2:B:24:DT:O2	5:R:39:A:N1	2.33	0.61
6:I:735:LYS:HG3	6:I:748:ILE:CD1	2.30	0.61
3:G:31:LEU:HD13	3:G:36:GLY:HA2	1.83	0.61
6:I:11:ILE:HG22	6:I:1172:LEU:HD11	1.81	0.61
6:I:969:ALA:O	6:I:973:SER:CB	2.48	0.61
6:I:969:ALA:O	6:I:973:SER:HB2	2.00	0.61
7:J:263:SER:HB2	7:J:266:ASN:HD22	1.63	0.61
6:I:975:ILE:HG23	6:I:997:TRP:NE1	2.15	0.61
5:R:47:A:O2'	7:J:464:ASP:CG	2.40	0.60
6:I:975:ILE:O	6:I:979:LEU:CD1	2.39	0.60
5:R:44:A:OP2	6:I:540:ARG:NH2	2.34	0.60
6:I:976:ARG:O	6:I:977:ALA:C	2.39	0.60
1:A:35:DA:H2''	1:A:36:DG:C5	2.36	0.60
3:G:104:LYS:HG2	3:G:110:VAL:HG12	1.83	0.60
6:I:514:PHE:HE2	6:I:761:GLN:OE1	1.83	0.60
3:H:107:ILE:HG13	3:H:136:GLU:HG3	1.84	0.60
3:H:64:VAL:HG13	3:H:69:SER:HB3	1.83	0.60

Continued on next page...

Continued from previous page...

Atom-1	Atom-2	Interatomic distance (Å)	Clash overlap (Å)
7:J:1090:ILE:HD12	7:J:1091:PRO:HD2	1.84	0.60
2:B:7:DA:H2''	2:B:8:DT:H5'	1.83	0.59
3:H:100:LEU:HD21	3:H:121:VAL:CG2	2.31	0.59
7:J:1060:VAL:HG22	7:J:1106:ILE:HG23	1.83	0.59
6:I:452:ARG:HD2	6:I:585:GLY:HA3	1.84	0.59
6:I:782:VAL:HG21	6:I:792:GLY:HA3	1.84	0.59
3:G:190:ALA:H	3:G:199:ASP:HA	1.66	0.59
7:J:836:ARG:HA	7:J:869:CYS:SG	2.42	0.59
3:H:90:VAL:CB	3:H:121:VAL:CG1	2.80	0.59
7:J:1173:ARG:HH22	7:J:1196:LEU:HB2	1.65	0.59
3:H:103:ASN:HA	3:H:141:SER:HB2	1.85	0.59
7:J:56:LEU:CA	7:J:250:ARG:NH2	2.65	0.59
7:J:56:LEU:CA	7:J:250:ARG:HH22	2.16	0.59
7:J:211:GLU:HA	7:J:214:ARG:HD3	1.85	0.59
7:J:839:VAL:CG1	7:J:864:LEU:HD12	2.33	0.59
6:I:264:GLU:HB2	6:I:267:ARG:HE	1.67	0.58
7:J:472:LEU:O	7:J:477:GLN:NE2	2.36	0.58
7:J:72:CYS:HG	7:J:88:CYS:HB3	1.67	0.58
7:J:80:HIS:O	7:J:83:VAL:HB	2.03	0.58
7:J:381:ILE:HD11	7:J:412:LEU:HD13	1.86	0.58
7:J:442:ILE:HD12	7:J:444:GLY:H	1.68	0.58
3:G:182:ARG:NH1	3:G:206:GLU:OE1	2.36	0.58
6:I:962:GLU:O	6:I:966:ILE:HG13	2.04	0.58
6:I:6:THR:OG1	6:I:781:ASP:OD2	2.17	0.58
6:I:618:GLN:HE21	6:I:618:GLN:HA	1.69	0.58
6:I:785:ASP:OD1	6:I:791:LEU:N	2.37	0.58
6:I:1246:ARG:HH21	6:I:1265:PHE:HE1	1.47	0.58
7:J:1158:GLU:CD	7:J:1222:ARG:NH2	2.53	0.58
6:I:685:MET:HG2	6:I:1235:LEU:HD11	1.85	0.57
6:I:151:ARG:HD3	6:I:177:ILE:HD13	1.86	0.57
6:I:225:PHE:HZ	6:I:345:PRO:HA	1.70	0.57
7:J:72:CYS:SG	7:J:88:CYS:CB	2.85	0.57
7:J:205:LEU:HA	7:J:217:LEU:HD13	1.87	0.57
7:J:746:LEU:HG	7:J:758:PRO:HB3	1.86	0.57
3:H:31:LEU:HD11	3:H:201:LEU:HB2	1.85	0.57
6:I:319:LEU:HA	6:I:322:LEU:HD12	1.85	0.57
6:I:997:TRP:HZ3	6:I:1002:LEU:CB	2.16	0.57
3:H:101:THR:O	3:H:116:THR:HG21	2.04	0.57
7:J:250:ARG:HD2	7:J:266:ASN:CG	2.25	0.57
7:J:839:VAL:HG12	7:J:864:LEU:HD12	1.86	0.57
6:I:519:ASN:HD21	6:I:796:LEU:HD23	1.46	0.56

Continued on next page...

Continued from previous page...

Atom-1	Atom-2	Interatomic distance (Å)	Clash overlap (Å)
6:I:866:ASP:OD1	6:I:867:GLU:N	2.35	0.56
7:J:210:SER:O	7:J:214:ARG:HD2	2.03	0.56
7:J:1221:LEU:CB	7:J:1229:VAL:HG21	2.30	0.56
5:R:47:A:OP1	6:I:1073:LYS:NZ	2.35	0.56
7:J:68:TYR:CB	7:J:78:LEU:HG	2.35	0.56
7:J:926:PRO:HG2	7:J:1248:ILE:HD11	1.87	0.56
3:H:115:ILE:HG21	3:H:123:ILE:CD1	2.27	0.56
6:I:262:TYR:HB3	6:I:276:GLN:HE22	1.71	0.56
7:J:279:LEU:HD13	7:J:295:GLU:HB3	1.87	0.56
2:B:29:DA:H2''	2:B:30:DC:H5'	1.86	0.56
7:J:706:VAL:HG23	7:J:713:GLU:OE1	2.06	0.56
7:J:1080:ILE:HG22	7:J:1088:VAL:HB	1.87	0.56
6:I:371:ARG:HE	6:I:384:LEU:CD1	2.18	0.56
6:I:733:VAL:CG1	6:I:748:ILE:CG2	2.84	0.56
2:B:24:DT:O2	2:B:24:DT:H2'	2.05	0.55
6:I:559:CYS:HB2	6:I:662:SER:HB3	1.88	0.55
6:I:1113:LEU:HD22	7:J:641:ILE:CD1	2.26	0.55
6:I:314:ASN:O	6:I:352:ARG:NH2	2.38	0.55
3:H:101:THR:CG2	3:H:143:ARG:HG2	2.16	0.55
3:H:176:CYS:SG	7:J:535:ARG:NH1	2.80	0.55
6:I:958:LYS:HE2	6:I:962:GLU:OE2	2.07	0.55
6:I:519:ASN:HD21	6:I:689:ALA:HB3	1.71	0.55
7:J:749:LYS:HG3	7:J:750:PRO:HD2	1.88	0.55
6:I:48:GLY:O	6:I:461:GLU:OE1	2.24	0.55
6:I:387:ASN:HA	6:I:391:SER:HB2	1.89	0.55
7:J:76:LYS:O	7:J:76:LYS:HG3	2.07	0.55
7:J:353:SER:HB2	7:J:372:MET:HE1	1.89	0.55
7:J:863:LEU:HD23	7:J:865:HIS:CE1	2.41	0.55
3:G:150:ARG:CZ	3:H:8:PHE:CE1	2.90	0.55
3:H:56:VAL:HG12	3:H:146:VAL:HG22	1.88	0.55
6:I:241:LEU:HB3	6:I:285:ILE:HD12	1.89	0.55
6:I:638:SER:HB3	6:I:639:LYS:HD2	1.89	0.55
7:J:1021:ASP:HB3	7:J:1024:THR:HG22	1.88	0.54
3:H:90:VAL:CG1	3:H:121:VAL:CG1	2.85	0.54
6:I:1121:ALA:HB2	6:I:1182:ILE:HD12	1.90	0.54
1:A:10:DG:H5''	7:J:45:ASN:HD21	1.70	0.54
7:J:146:VAL:HA	7:J:178:ALA:HA	1.89	0.54
3:G:228:LEU:HD21	3:H:224:LEU:HB3	1.88	0.54
3:H:107:ILE:CD1	3:H:136:GLU:HG3	2.37	0.54
6:I:821:ARG:HE	6:I:1082:ILE:HD12	1.73	0.54
6:I:65:ASN:HB2	6:I:105:TYR:HB2	1.89	0.54

Continued on next page...

Continued from previous page...

Atom-1	Atom-2	Interatomic distance (Å)	Clash overlap (Å)
6:I:472:GLU:HA	6:I:475:VAL:HG12	1.90	0.54
6:I:975:ILE:HG23	6:I:997:TRP:CD1	2.43	0.54
7:J:980:THR:HG23	7:J:997:VAL:HG23	1.88	0.54
6:I:1101:LEU:HD21	7:J:508:LEU:HD22	1.90	0.54
6:I:843:THR:HG22	6:I:844:LYS:N	2.23	0.53
4:K:4:VAL:CG2	7:J:615:LYS:NZ	2.72	0.53
6:I:968:GLU:HG2	6:I:972:PHE:CZ	2.43	0.53
7:J:112:ALA:HB3	7:J:139:LEU:HD21	1.91	0.53
7:J:317:THR:OG1	7:J:318:GLY:N	2.42	0.53
7:J:1062:LEU:HB2	7:J:1067:ARG:HB3	1.90	0.53
3:H:101:THR:OG1	3:H:116:THR:HG21	2.08	0.53
6:I:870:ILE:HG21	6:I:931:VAL:HG11	1.90	0.53
6:I:735:LYS:HG3	6:I:748:ILE:HD11	1.90	0.53
6:I:1289:GLU:O	6:I:1294:LYS:HB2	2.08	0.53
7:J:263:SER:HB2	7:J:266:ASN:HB2	1.90	0.53
6:I:1158:LYS:O	6:I:1158:LYS:HG2	2.09	0.52
6:I:1291:LEU:HD21	7:J:1351:VAL:HG13	1.90	0.52
7:J:133:ARG:H	7:J:133:ARG:HD2	1.74	0.52
6:I:1223:ARG:HH22	7:J:721:SER:HB3	1.75	0.52
3:G:64:VAL:HG21	3:G:78:ILE:HG13	1.90	0.52
6:I:975:ILE:CG2	6:I:997:TRP:CD1	2.93	0.52
6:I:1065:LYS:HE3	6:I:1235:LEU:HD12	1.92	0.52
7:J:143:SER:HB3	7:J:159:ILE:HD11	1.92	0.52
6:I:53:PHE:O	6:I:57:PHE:HB2	2.10	0.52
7:J:151:MET:N	7:J:151:MET:SD	2.82	0.52
1:A:10:DG:H5'	7:J:45:ASN:HD21	1.75	0.52
7:J:1263:LYS:HB2	7:J:1307:LEU:HD11	1.92	0.52
6:I:816:ILE:HG12	6:I:1098:LEU:CD2	2.37	0.52
7:J:211:GLU:HA	7:J:214:ARG:HB2	1.90	0.52
7:J:1046:ILE:HG23	7:J:1059:LEU:HB3	1.91	0.52
6:I:1245:ALA:HB2	7:J:372:MET:HG3	1.91	0.51
7:J:1048:ARG:HE	7:J:1057:SER:HB3	1.74	0.51
7:J:1059:LEU:HD11	7:J:1110:GLU:HG3	1.92	0.51
4:K:6:VAL:HG21	7:J:482:ALA:HA	1.92	0.51
5:R:37:G:H22	6:I:1259:LEU:HD11	1.75	0.51
7:J:84:ILE:HG12	7:J:91:GLU:HG3	1.93	0.51
3:H:16:ILE:CD1	3:H:214:GLU:HG2	2.31	0.51
6:I:841:ARG:HG2	6:I:1046:VAL:HG12	1.91	0.51
7:J:978:ARG:HH22	7:J:1198:VAL:HG23	1.75	0.51
6:I:997:TRP:CH2	6:I:1002:LEU:HB3	2.44	0.51
7:J:824:PRO:HD3	7:J:835:LEU:HB2	1.91	0.51

Continued on next page...

Continued from previous page...

Atom-1	Atom-2	Interatomic distance (Å)	Clash overlap (Å)
6:I:161:LYS:HD2	6:I:170:VAL:CG2	2.36	0.51
3:H:75:GLN:HG3	3:H:134:THR:HG21	1.93	0.51
7:J:552:ILE:HD13	7:J:589:TYR:CZ	2.46	0.51
6:I:474:ALA:O	6:I:478:ARG:HG2	2.11	0.51
7:J:1367:GLN:O	7:J:1371:ARG:HG3	2.11	0.51
6:I:978:VAL:HB	6:I:1011:LEU:HD11	1.92	0.50
7:J:68:TYR:O	7:J:76:LYS:HB2	2.11	0.50
7:J:885:VAL:HG21	7:J:1255:VAL:HG12	1.92	0.50
5:R:41:C:H2'	5:R:42:A:H8	1.76	0.50
1:A:26:DA:H4'	1:A:27:DA:OP1	2.11	0.50
3:H:104:LYS:HE2	3:H:110:VAL:HG22	1.93	0.50
7:J:1078:LEU:HD12	7:J:1101:LEU:HD21	1.94	0.50
6:I:936:ARG:HH22	6:I:1045:GLY:H	1.59	0.50
7:J:805:GLN:HG2	7:J:1348:LYS:HB2	1.92	0.50
3:H:31:LEU:HB2	3:H:199:ASP:O	2.11	0.50
6:I:213:LEU:HD22	6:I:422:LYS:HD3	1.92	0.50
3:G:9:LEU:HB2	3:G:32:GLU:HG3	1.94	0.50
3:H:107:ILE:CG1	3:H:136:GLU:HG3	2.42	0.50
6:I:175:ARG:CG	6:I:185:ASP:OD2	2.52	0.50
1:A:31:DA:H5''	7:J:120:LEU:HD22	1.94	0.50
6:I:1315:MET:HE2	7:J:473:THR:HG21	1.93	0.50
6:I:979:LEU:HD11	6:I:997:TRP:CE2	2.47	0.49
6:I:14:ASP:HA	6:I:1183:ALA:HB3	1.93	0.49
6:I:1211:ARG:HD2	6:I:1220:GLN:NE2	2.28	0.49
6:I:1115:THR:HG23	6:I:1228:GLY:HA3	1.94	0.49
7:J:1100:PHE:CD2	7:J:1200:GLU:HB2	2.48	0.49
3:H:107:ILE:HG13	3:H:136:GLU:HG2	1.94	0.49
6:I:242:VAL:HG13	6:I:245:ARG:HB2	1.93	0.49
7:J:909:ILE:HD11	7:J:913:GLU:HB3	1.94	0.49
5:R:41:C:H2'	5:R:42:A:C8	2.48	0.49
6:I:226:GLU:HB2	6:I:337:PHE:HB3	1.94	0.49
6:I:642:SER:HB3	7:J:770:LEU:HD13	1.95	0.49
6:I:1256:GLN:HA	6:I:1296:ASP:HB3	1.95	0.49
7:J:426:ALA:HB3	7:J:427:PRO:HD3	1.95	0.49
3:H:107:ILE:HD11	3:H:136:GLU:HG3	1.93	0.49
7:J:978:ARG:NH1	7:J:1197:ASN:O	2.46	0.48
3:H:142:MET:SD	3:H:142:MET:N	2.86	0.48
6:I:968:GLU:O	6:I:972:PHE:HB2	2.14	0.48
7:J:1173:ARG:HH21	7:J:1190:ILE:HG21	1.77	0.48
1:A:10:DG:H5''	7:J:45:ASN:CG	2.32	0.48
7:J:1023:HIS:O	7:J:1126:GLN:N	2.46	0.48

Continued on next page...

Continued from previous page...

Atom-1	Atom-2	Interatomic distance (Å)	Clash overlap (Å)
7:J:56:LEU:CD2	7:J:250:ARG:HH22	2.25	0.48
6:I:368:ARG:HE	6:I:376:PRO:HG2	1.79	0.48
6:I:423:ASP:HA	6:I:426:ILE:HG12	1.96	0.48
7:J:1251:LYS:O	7:J:1255:VAL:HG13	2.13	0.48
3:H:29:GLU:HB3	3:H:30:PRO:HD3	1.96	0.48
6:I:384:LEU:HD21	6:I:388:LEU:CD1	2.33	0.48
6:I:1258:PRO:HB3	6:I:1267:GLY:H	1.79	0.48
6:I:1105:SER:HB2	7:J:731:ARG:HG3	1.95	0.47
6:I:979:LEU:HB3	6:I:989:LEU:HD13	1.96	0.47
3:G:14:VAL:HG11	3:G:29:GLU:HB2	1.97	0.47
7:J:1215:GLU:HB3	7:J:1220:ILE:HD11	1.95	0.47
2:B:26:DA:OP1	2:B:26:DA:H4'	2.15	0.47
3:H:191:ARG:HH12	7:J:370:LYS:HD3	1.80	0.47
6:I:15:PHE:HZ	6:I:1198:LEU:HD22	1.80	0.47
6:I:196:VAL:HG12	6:I:206:ALA:HA	1.95	0.47
7:J:36:GLY:HA3	7:J:61:ILE:HG23	1.96	0.47
7:J:518:VAL:HG13	7:J:716:GLN:HG3	1.97	0.47
7:J:1221:LEU:HA	7:J:1229:VAL:CG2	2.44	0.47
6:I:195:PHE:HD2	6:I:203:LYS:HB3	1.80	0.47
7:J:695:LYS:HB2	7:J:695:LYS:HE3	1.66	0.47
7:J:948:SER:HA	7:J:1022:PRO:HD3	1.97	0.47
6:I:173:ASN:HD21	6:I:175:ARG:HH12	1.54	0.47
6:I:997:TRP:HZ3	6:I:1002:LEU:H	1.63	0.47
4:K:3:ARG:NE	4:K:5:THR:O	2.48	0.47
6:I:196:VAL:HG11	6:I:209:ILE:HG12	1.97	0.47
6:I:967:LEU:HD23	6:I:967:LEU:HA	1.74	0.47
3:G:100:LEU:HD21	3:G:121:VAL:HG11	1.97	0.46
6:I:102:LEU:HB3	6:I:118:LYS:HB2	1.97	0.46
1:A:34:DC:H1'	1:A:35:DA:H5'	1.96	0.46
6:I:1018:TYR:C	6:I:1020:GLU:N	2.68	0.46
7:J:58:CYS:SG	7:J:59:ALA:N	2.88	0.46
3:G:61:ILE:HB	3:G:64:VAL:HG12	1.97	0.46
7:J:1109:LEU:HD13	7:J:1121:LEU:HD23	1.98	0.46
6:I:1313:HIS:HB2	7:J:474:LEU:HD13	1.96	0.46
7:J:395:LYS:HD2	7:J:395:LYS:HA	1.70	0.46
7:J:615:LYS:HB3	7:J:616:PRO:HD3	1.97	0.46
3:G:50:SER:HB2	3:H:8:PHE:CE1	2.50	0.46
6:I:699:LEU:HD12	6:I:699:LEU:HA	1.79	0.46
6:I:1111:GLN:HB2	6:I:1230:MET:HE2	1.95	0.46
7:J:225:GLU:HA	7:J:228:VAL:HG22	1.97	0.46
7:J:399:LYS:O	7:J:403:ARG:HG2	2.15	0.46

Continued on next page...

Continued from previous page...

Atom-1	Atom-2	Interatomic distance (Å)	Clash overlap (Å)
7:J:1043:GLY:N	7:J:1046:ILE:O	2.44	0.46
3:H:11:PRO:HG3	3:H:31:LEU:HD23	1.97	0.46
3:H:90:VAL:HB	3:H:121:VAL:HG12	1.96	0.46
3:H:115:ILE:C	3:H:116:THR:HG22	2.32	0.46
3:H:121:VAL:HG12	3:H:121:VAL:O	2.16	0.46
6:I:817:LEU:HB3	6:I:1085:MET:HE1	1.96	0.46
6:I:1058:ARG:HD3	6:I:1238:LEU:HD22	1.97	0.46
3:G:218:ARG:O	3:G:222:THR:HG23	2.15	0.46
7:J:1367:GLN:HE21	7:J:1371:ARG:CZ	2.29	0.46
6:I:349:GLU:O	6:I:353:VAL:HG23	2.15	0.46
6:I:465:ARG:O	6:I:469:VAL:HG13	2.16	0.46
7:J:973:LEU:HB3	7:J:1003:LEU:HB2	1.98	0.46
7:J:978:ARG:HH22	7:J:1198:VAL:HA	1.80	0.46
7:J:1035:VAL:HG13	7:J:1112:GLY:H	1.81	0.46
3:H:115:ILE:CG2	3:H:123:ILE:HD11	2.33	0.46
6:I:934:PHE:HB2	6:I:1049:ILE:HG12	1.98	0.46
7:J:147:ILE:HG22	7:J:188:LEU:HG	1.97	0.46
7:J:586:GLY:HA3	7:J:612:LEU:HD21	1.97	0.46
7:J:1079:LYS:HE3	7:J:1096:PRO:HB2	1.98	0.46
6:I:273:HIS:O	6:I:276:GLN:HG3	2.16	0.46
6:I:332:ARG:HA	6:I:332:ARG:HD2	1.82	0.46
6:I:1243:MET:HG3	7:J:372:MET:HE2	1.97	0.46
1:A:36:DG:H1'	1:A:37:DA:C5	2.52	0.45
6:I:888:THR:O	6:I:890:LYS:NZ	2.38	0.45
7:J:269:TYR:O	7:J:273:ILE:HG13	2.15	0.45
7:J:781:LYS:HD2	7:J:781:LYS:HA	1.74	0.45
3:H:192:VAL:HB	3:H:195:ARG:HD2	1.98	0.45
6:I:222:ASP:OD1	6:I:222:ASP:O	2.34	0.45
6:I:733:VAL:CG1	6:I:748:ILE:HG21	2.46	0.45
6:I:997:TRP:HZ2	6:I:1011:LEU:HB3	1.81	0.45
7:J:697:MET:SD	7:J:738:ARG:HA	2.56	0.45
2:B:4:DT:H2''	2:B:5:DG:C8	2.52	0.45
6:I:1113:LEU:HD22	7:J:641:ILE:CG1	2.46	0.45
3:H:5:VAL:HG13	3:H:6:THR:HG23	1.97	0.45
7:J:1163:VAL:HG11	7:J:1198:VAL:HG21	1.98	0.45
7:J:1369:ARG:HA	7:J:1372:ARG:HE	1.80	0.45
6:I:839:VAL:HG13	6:I:1049:ILE:HG22	1.98	0.45
7:J:502:PRO:HB3	7:J:506:VAL:HG13	1.99	0.45
7:J:759:ILE:HG23	7:J:771:GLN:HB3	1.99	0.45
7:J:1221:LEU:CA	7:J:1229:VAL:CG2	2.94	0.45
7:J:511:TYR:OH	7:J:515:ARG:NH1	2.48	0.45

Continued on next page...

Continued from previous page...

Atom-1	Atom-2	Interatomic distance (Å)	Clash overlap (Å)
3:G:29:GLU:HB3	3:G:30:PRO:HD3	1.98	0.45
6:I:976:ARG:C	6:I:978:VAL:N	2.70	0.45
7:J:222:LYS:HA	7:J:222:LYS:HD3	1.69	0.45
6:I:103:VAL:HG12	6:I:117:ILE:HG22	1.98	0.45
6:I:118:LYS:HE2	6:I:488:MET:HG3	1.98	0.45
6:I:384:LEU:O	6:I:388:LEU:HG	2.16	0.45
6:I:979:LEU:HD12	6:I:1002:LEU:HD22	1.99	0.45
6:I:1276:TRP:CD2	7:J:801:VAL:HG11	2.52	0.45
3:G:99:ILE:HG12	3:G:145:LYS:HG3	1.99	0.45
3:G:110:VAL:HG22	3:G:131:CYS:O	2.17	0.45
6:I:494:ASN:OD1	6:I:494:ASN:N	2.42	0.45
3:G:70:THR:OG1	3:G:71:LYS:N	2.50	0.44
7:J:250:ARG:HB3	7:J:265:LEU:HD23	1.99	0.44
6:I:519:ASN:ND2	6:I:689:ALA:HB3	2.32	0.44
1:A:38:DG:O5'	7:J:1174:ARG:HD3	2.17	0.44
3:H:111:THR:HA	3:H:129:VAL:HA	1.99	0.44
6:I:348:SER:O	6:I:352:ARG:HG2	2.17	0.44
6:I:852:ALA:HB2	6:I:869:GLY:HA2	1.99	0.44
6:I:972:PHE:HB3	6:I:994:ARG:HD2	1.99	0.44
6:I:1005:GLU:HG3	6:I:1008:GLN:H	1.82	0.44
6:I:364:VAL:O	6:I:368:ARG:HG3	2.18	0.44
3:H:118:ASP:HB3	3:H:119:GLY:H	1.55	0.44
4:K:4:VAL:HG21	7:J:615:LYS:NZ	2.33	0.44
6:I:297:VAL:HB	6:I:317:LEU:HD21	1.98	0.44
6:I:633:LEU:HG	6:I:644:LEU:HD22	2.00	0.44
6:I:727:VAL:HG23	6:I:732:ILE:HG12	1.99	0.44
6:I:755:LYS:HD2	6:I:755:LYS:HA	1.72	0.44
7:J:116:PHE:CD2	7:J:237:MET:HG2	2.53	0.44
7:J:133:ARG:HD2	7:J:133:ARG:N	2.33	0.44
7:J:179:LYS:HD2	7:J:179:LYS:HA	1.76	0.44
1:A:35:DA:H2''	1:A:36:DG:N7	2.32	0.44
7:J:81:ARG:HA	7:J:92:VAL:O	2.18	0.44
7:J:449:LEU:HD13	7:J:466:MET:HE1	2.00	0.44
7:J:502:PRO:HB3	7:J:506:VAL:CG1	2.47	0.44
3:G:112:ALA:HB1	3:G:123:ILE:HG21	2.00	0.44
3:G:218:ARG:HG2	3:H:233:ASP:OD1	2.18	0.44
7:J:799:ARG:HG2	7:J:1325:PHE:HZ	1.83	0.44
7:J:826:ILE:HG21	7:J:993:GLU:HA	1.99	0.44
7:J:925:GLU:HB3	7:J:926:PRO:HD3	2.00	0.44
6:I:52:ALA:O	6:I:56:VAL:HG22	2.18	0.43
6:I:271:ALA:HA	6:I:274:ILE:HD12	2.00	0.43

Continued on next page...

Continued from previous page...

Atom-1	Atom-2	Interatomic distance (Å)	Clash overlap (Å)
6:I:318:SER:O	6:I:322:LEU:HG	2.18	0.43
6:I:48:GLY:N	6:I:461:GLU:OE1	2.36	0.43
6:I:1278:LEU:HD23	6:I:1278:LEU:HA	1.87	0.43
7:J:42:GLU:HB2	7:J:52:GLU:HG3	2.00	0.43
7:J:528:THR:O	7:J:551:ARG:HG2	2.18	0.43
3:G:13:LEU:HD13	3:H:231:PHE:CE1	2.53	0.43
3:H:90:VAL:CB	3:H:121:VAL:HG13	2.35	0.43
6:I:3:TYR:CE2	6:I:1159:VAL:HG23	2.53	0.43
6:I:805:MET:HE3	7:J:636:GLY:HA2	2.00	0.43
7:J:428:THR:HG22	7:J:433:GLY:HA3	1.98	0.43
7:J:432:LEU:HD13	7:J:499:ILE:HG12	2.01	0.43
7:J:964:LYS:HB2	7:J:977:SER:H	1.84	0.43
6:I:3:TYR:HE2	6:I:1159:VAL:HG23	1.83	0.43
6:I:468:LEU:HD23	6:I:468:LEU:HA	1.79	0.43
7:J:450:HIS:CE1	7:J:452:LEU:HB2	2.53	0.43
7:J:774:ILE:HA	7:J:777:HIS:CD2	2.53	0.43
7:J:807:LEU:HD23	7:J:807:LEU:HA	1.82	0.43
7:J:1073:ASP:HA	7:J:1168:GLU:HG2	2.00	0.43
7:J:1051:ASP:H	7:J:1057:SER:HA	1.84	0.43
3:G:74:VAL:HG12	3:G:76:GLU:H	1.83	0.43
4:K:10:VAL:HG12	4:K:19:LEU:HD22	2.01	0.43
6:I:934:PHE:HE2	6:I:1051:LYS:HD2	1.83	0.43
6:I:773:LEU:HD12	6:I:773:LEU:H	1.84	0.43
6:I:972:PHE:CZ	6:I:995:ASP:HB3	2.54	0.43
7:J:500:ILE:HG13	7:J:500:ILE:O	2.18	0.43
7:J:1078:LEU:HD23	7:J:1078:LEU:HA	1.86	0.43
3:G:83:LEU:HB3	6:I:694:ARG:HH21	1.83	0.43
7:J:1350:ASN:HD22	7:J:1358:PRO:HD3	1.84	0.43
3:G:47:LEU:O	3:G:180:VAL:HG21	2.18	0.43
3:H:83:LEU:HD13	7:J:526:VAL:HG12	2.01	0.43
3:H:192:VAL:O	3:H:195:ARG:HG3	2.18	0.43
7:J:281:ARG:HA	7:J:284:ASP:OD2	2.19	0.43
7:J:395:LYS:HE3	7:J:399:LYS:NZ	2.33	0.43
1:A:30:DG:H2''	1:A:31:DA:H8	1.83	0.43
5:R:45:C:H2'	5:R:46:G:H8	1.84	0.43
6:I:239:MET:HE1	6:I:241:LEU:HD13	2.00	0.43
6:I:973:SER:O	6:I:977:ALA:N	2.49	0.43
6:I:979:LEU:HD11	6:I:997:TRP:CD2	2.54	0.43
6:I:1108:ASN:OD1	6:I:1111:GLN:NE2	2.47	0.43
7:J:901:ARG:HD3	7:J:906:GLY:HA2	2.00	0.43
1:A:30:DG:C6	1:A:31:DA:C6	3.07	0.42

Continued on next page...

Continued from previous page...

Atom-1	Atom-2	Interatomic distance (Å)	Clash overlap (Å)
7:J:978:ARG:HH12	7:J:1198:VAL:HA	1.84	0.42
7:J:1221:LEU:HA	7:J:1229:VAL:HG23	2.00	0.42
3:G:184:ALA:HB2	6:I:1091:GLY:HA3	2.00	0.42
7:J:1077:ALA:HB2	7:J:1100:PHE:CE2	2.54	0.42
3:G:95:LYS:H	3:G:95:LYS:HG2	1.59	0.42
6:I:390:PHE:O	6:I:419:ILE:HG21	2.20	0.42
6:I:1002:LEU:HD23	6:I:1008:GLN:HG2	2.01	0.42
6:I:1297:ASP:H	6:I:1301:ARG:HD3	1.85	0.42
7:J:1082:ASP:HB2	7:J:1086:ASN:HB2	2.02	0.42
6:I:718:ALA:HB2	6:I:783:LEU:HD23	2.02	0.42
6:I:841:ARG:HA	6:I:1046:VAL:HA	2.00	0.42
6:I:1312:ASN:O	6:I:1312:ASN:ND2	2.53	0.42
6:I:105:TYR:HA	6:I:114:VAL:HA	2.02	0.42
6:I:337:PHE:CE2	6:I:339:ASN:HB2	2.54	0.42
6:I:843:THR:CG2	6:I:844:LYS:N	2.83	0.42
6:I:1140:LYS:O	6:I:1143:GLU:HG3	2.20	0.42
7:J:770:LEU:O	7:J:774:ILE:HG13	2.19	0.42
3:G:228:LEU:HD23	3:H:225:ALA:HB2	2.00	0.42
4:K:66:VAL:O	4:K:70:GLN:HG2	2.20	0.42
6:I:1254:VAL:O	6:I:1255:THR:OG1	2.33	0.42
6:I:1276:TRP:CE2	7:J:801:VAL:HG11	2.54	0.42
7:J:56:LEU:CD2	7:J:250:ARG:HH12	2.19	0.42
7:J:510:LEU:HD12	7:J:601:ILE:HD13	2.02	0.42
7:J:832:LYS:HA	7:J:832:LYS:HD3	1.79	0.42
7:J:964:LYS:HA	7:J:964:LYS:HD3	1.87	0.42
1:A:29:DA:C2	1:A:30:DG:C4	3.07	0.42
5:R:45:C:H2'	5:R:46:G:C8	2.55	0.42
6:I:1014:LEU:HD12	6:I:1014:LEU:HA	1.81	0.42
6:I:720:ARG:HE	6:I:736:VAL:HG11	1.84	0.42
6:I:735:LYS:HG3	6:I:748:ILE:HD13	1.99	0.42
7:J:312:ARG:O	7:J:312:ARG:NH1	2.53	0.42
3:H:107:ILE:HG23	3:H:134:THR:HA	2.02	0.42
6:I:1073:LYS:HD2	7:J:462:ASP:HB2	2.02	0.42
7:J:559:ALA:HB3	7:J:562:GLU:HB2	2.02	0.42
7:J:733:SER:O	7:J:737:ILE:HG12	2.19	0.42
6:I:28:LEU:HD22	6:I:527:LYS:HD2	2.01	0.41
6:I:297:VAL:HG12	6:I:315:MET:H	1.84	0.41
6:I:952:GLN:O	6:I:956:ALA:N	2.46	0.41
7:J:417:ARG:HB3	7:J:418:GLU:OE2	2.20	0.41
7:J:805:GLN:HE22	7:J:1347:LEU:HD22	1.76	0.41
7:J:1029:THR:HG21	7:J:1115:ILE:HG21	2.02	0.41

Continued on next page...

Continued from previous page...

Atom-1	Atom-2	Interatomic distance (Å)	Clash overlap (Å)
3:H:191:ARG:NH1	7:J:370:LYS:HD3	2.35	0.41
7:J:81:ARG:HD3	7:J:94:GLN:HE22	1.85	0.41
3:H:86:LYS:NZ	3:H:174:ASP:HB2	2.35	0.41
6:I:970:GLY:O	6:I:974:ARG:HB2	2.21	0.41
7:J:40:LYS:HE2	7:J:40:LYS:HB3	1.77	0.41
7:J:678:ARG:NH1	7:J:756:GLU:OE1	2.53	0.41
3:G:102:LEU:HD12	3:G:115:ILE:HG12	2.03	0.41
6:I:1276:TRP:HH2	7:J:798:ARG:HG3	1.84	0.41
7:J:972:LYS:HA	7:J:972:LYS:HD3	1.79	0.41
3:H:112:ALA:O	3:H:123:ILE:HD13	2.20	0.41
7:J:120:LEU:HB2	7:J:121:PRO:HD3	2.01	0.41
7:J:706:VAL:HG23	7:J:706:VAL:O	2.20	0.41
1:A:25:DG:H5"	6:I:542:ARG:HD2	2.02	0.41
7:J:1253:ILE:O	7:J:1257:VAL:HG23	2.20	0.41
3:H:172:LEU:HD23	3:H:172:LEU:HA	1.88	0.41
6:I:292:ILE:HA	6:I:295:LYS:HG2	2.03	0.41
6:I:299:LYS:HE2	6:I:299:LYS:HB2	1.78	0.41
6:I:1005:GLU:H	6:I:1008:GLN:HB3	1.85	0.41
7:J:59:ALA:HB3	7:J:71:LEU:HD12	2.01	0.41
7:J:367:GLY:HA3	7:J:448:GLN:HB2	2.02	0.41
6:I:514:PHE:CE2	6:I:761:GLN:OE1	2.70	0.41
6:I:936:ARG:NH2	6:I:1046:VAL:O	2.54	0.41
7:J:265:LEU:HD11	7:J:269:TYR:CE2	2.55	0.41
7:J:799:ARG:HG2	7:J:1325:PHE:CZ	2.56	0.41
3:G:48:LEU:HD23	3:G:48:LEU:HA	1.90	0.41
3:H:102:LEU:HD12	3:H:103:ASN:H	1.85	0.41
4:K:32:VAL:HG22	6:I:1312:ASN:HB3	2.03	0.41
4:K:51:LEU:O	4:K:55:GLU:HG3	2.21	0.41
6:I:176:ILE:HD12	6:I:184:LEU:HD23	2.02	0.41
6:I:209:ILE:HD13	6:I:209:ILE:HA	1.93	0.41
6:I:733:VAL:CG1	6:I:748:ILE:HG23	2.51	0.41
6:I:1122:LYS:HG2	6:I:1229:TYR:CZ	2.56	0.41
7:J:96:LYS:HE3	7:J:96:LYS:HB3	1.86	0.41
7:J:514:THR:OG1	7:J:596:LEU:HB2	2.21	0.41
7:J:774:ILE:HA	7:J:777:HIS:HD2	1.86	0.41
3:G:11:PRO:HB3	3:G:31:LEU:HG	2.03	0.41
6:I:817:LEU:O	6:I:1096:ILE:HA	2.21	0.41
3:H:104:LYS:HD3	3:H:110:VAL:HG13	2.03	0.40
6:I:375:PRO:HA	6:I:376:PRO:HD3	1.92	0.40
6:I:593:LYS:O	6:I:600:THR:OG1	2.35	0.40
6:I:1151:LEU:HD22	6:I:1198:LEU:HD13	2.02	0.40

Continued on next page...

Continued from previous page...

Atom-1	Atom-2	Interatomic distance (Å)	Clash overlap (Å)
7:J:606:ASN:O	7:J:610:ARG:HG2	2.20	0.40
7:J:789:LYS:HD3	7:J:930:LEU:O	2.20	0.40
7:J:1221:LEU:CA	7:J:1229:VAL:HG21	2.50	0.40
3:H:186:ASN:OD1	3:H:187:VAL:N	2.54	0.40
6:I:228:VAL:HB	6:I:335:THR:HG23	2.04	0.40
6:I:832:HIS:HB2	6:I:1056:VAL:HG23	2.03	0.40
6:I:1269:ARG:HA	7:J:346:ARG:HG2	2.03	0.40
7:J:254:PRO:HG3	7:J:262:THR:HG23	2.03	0.40
7:J:749:LYS:HG3	7:J:750:PRO:CD	2.52	0.40
3:G:149:GLY:HA3	3:G:177:TYR:CD1	2.57	0.40
6:I:185:ASP:HB2	6:I:197:ARG:O	2.22	0.40
6:I:954:LYS:O	6:I:958:LYS:N	2.51	0.40
6:I:976:ARG:HH12	6:I:989:LEU:HB2	1.84	0.40
7:J:114:ILE:HD12	7:J:117:LEU:HD23	2.02	0.40
7:J:770:LEU:HD23	7:J:770:LEU:HA	1.95	0.40
7:J:1263:LYS:NZ	7:J:1315:ALA:O	2.50	0.40
3:H:60:GLU:OE1	3:H:171:LEU:N	2.27	0.40
3:H:101:THR:HG22	3:H:143:ARG:CD	2.50	0.40
6:I:1005:GLU:HG2	6:I:1008:GLN:CB	2.39	0.40
7:J:250:ARG:O	7:J:250:ARG:CG	2.63	0.40
7:J:493:PRO:HA	7:J:904:ALA:HB2	2.03	0.40
7:J:639:VAL:HG23	7:J:722:ILE:HD11	2.03	0.40
1:A:33:DT:H2"	1:A:34:DC:C6	2.56	0.40
3:G:79:LEU:HD12	3:G:79:LEU:HA	1.92	0.40
6:I:107:ARG:HA	6:I:107:ARG:HD3	1.90	0.40
6:I:272:ARG:HH21	6:I:276:GLN:HB3	1.87	0.40
6:I:1105:SER:OG	7:J:736:GLN:NE2	2.54	0.40
6:I:1178:LYS:HE2	6:I:1178:LYS:HB3	1.89	0.40
7:J:395:LYS:O	7:J:399:LYS:HG2	2.22	0.40
7:J:398:LYS:HB2	7:J:398:LYS:HE2	1.86	0.40

There are no symmetry-related clashes.

5.3 Torsion angles ⓘ

5.3.1 Protein backbone ⓘ

In the following table, the Percentiles column shows the percent Ramachandran outliers of the chain as a percentile score with respect to all PDB entries followed by that with respect to all EM entries.

The Analysed column shows the number of residues for which the backbone conformation was analysed, and the total number of residues.

Mol	Chain	Analysed	Favoured	Allowed	Outliers	Percentiles	
3	G	214/235 (91%)	205 (96%)	9 (4%)	0	100	100
3	H	214/235 (91%)	198 (92%)	15 (7%)	1 (0%)	29	67
4	K	77/79 (98%)	74 (96%)	3 (4%)	0	100	100
6	I	1312/1341 (98%)	1248 (95%)	61 (5%)	3 (0%)	47	79
7	J	1331/1434 (93%)	1264 (95%)	67 (5%)	0	100	100
All	All	3148/3324 (95%)	2989 (95%)	155 (5%)	4 (0%)	54	84

All (4) Ramachandran outliers are listed below:

Mol	Chain	Res	Type
6	I	977	ALA
6	I	1019	ASP
3	H	123	ILE
6	I	59	ILE

5.3.2 Protein sidechains ⓘ

In the following table, the Percentiles column shows the percent sidechain outliers of the chain as a percentile score with respect to all PDB entries followed by that with respect to all EM entries.

The Analysed column shows the number of residues for which the sidechain conformation was analysed, and the total number of residues.

Mol	Chain	Analysed	Rotameric	Outliers	Percentiles	
3	G	186/202 (92%)	185 (100%)	1 (0%)	88	93
3	H	187/202 (93%)	185 (99%)	2 (1%)	73	84
4	K	67/67 (100%)	66 (98%)	1 (2%)	65	80
6	I	1135/1156 (98%)	1104 (97%)	31 (3%)	44	67
7	J	1122/1191 (94%)	1101 (98%)	21 (2%)	57	75
All	All	2697/2818 (96%)	2641 (98%)	56 (2%)	56	73

All (56) residues with a non-rotameric sidechain are listed below:

Mol	Chain	Res	Type
3	G	37	HIS

Continued on next page...

Continued from previous page...

Mol	Chain	Res	Type
3	H	14	VAL
3	H	91	ARG
4	K	19	LEU
6	I	70	TYR
6	I	185	ASP
6	I	386	GLU
6	I	530	ILE
6	I	548	ARG
6	I	554	HIS
6	I	573	ASN
6	I	580	GLN
6	I	601	ASP
6	I	618	GLN
6	I	674	ASP
6	I	741	MET
6	I	785	ASP
6	I	817	LEU
6	I	849	GLU
6	I	939	VAL
6	I	941	LYS
6	I	957	LYS
6	I	960	LEU
6	I	963	GLU
6	I	964	LEU
6	I	966	ILE
6	I	971	LEU
6	I	1022	LYS
6	I	1026	GLU
6	I	1030	GLU
6	I	1036	ILE
6	I	1154	ASP
6	I	1161	LEU
6	I	1272	GLU
6	I	1341	ASP
7	J	83	VAL
7	J	94	GLN
7	J	129	ASP
7	J	165	TYR
7	J	172	PHE
7	J	176	PHE
7	J	227	PHE
7	J	252	LEU

Continued on next page...

Continued from previous page...

Mol	Chain	Res	Type
7	J	260	PHE
7	J	338	PHE
7	J	353	SER
7	J	543	SER
7	J	703	THR
7	J	717	VAL
7	J	785	ASP
7	J	876	SER
7	J	895	CYS
7	J	987	GLU
7	J	1087	ASP
7	J	1194	ARG
7	J	1304	ARG

Sometimes sidechains can be flipped to improve hydrogen bonding and reduce clashes. All (14) such sidechains are listed below:

Mol	Chain	Res	Type
6	I	173	ASN
6	I	490	GLN
6	I	519	ASN
6	I	618	GLN
6	I	1220	GLN
6	I	1312	ASN
7	J	45	ASN
7	J	80	HIS
7	J	94	GLN
7	J	266	ASN
7	J	736	GLN
7	J	805	GLN
7	J	865	HIS
7	J	1367	GLN

5.3.3 RNA ⓘ

Mol	Chain	Analysed	Backbone Outliers	Pucker Outliers
5	R	47/47 (100%)	25 (53%)	3 (6%)

All (25) RNA backbone outliers are listed below:

Mol	Chain	Res	Type
5	R	2	C
5	R	3	A
5	R	8	U
5	R	9	U
5	R	10	C
5	R	13	G
5	R	14	C
5	R	15	U
5	R	16	A
5	R	17	C
5	R	18	A
5	R	25	A
5	R	26	U
5	R	27	A
5	R	28	A
5	R	30	A
5	R	31	A
5	R	32	A
5	R	33	C
5	R	34	U
5	R	35	A
5	R	36	A
5	R	38	G
5	R	39	A
5	R	42	A

All (3) RNA pucker outliers are listed below:

Mol	Chain	Res	Type
5	R	1	G
5	R	15	U
5	R	36	A

5.4 Non-standard residues in protein, DNA, RNA chains [i](#)

There are no non-standard protein/DNA/RNA residues in this entry.

5.5 Carbohydrates [i](#)

There are no monosaccharides in this entry.

5.6 Ligand geometry

Of 2 ligands modelled in this entry, 1 is monoatomic - leaving 1 for Mogul analysis.

In the following table, the Counts columns list the number of bonds (or angles) for which Mogul statistics could be retrieved, the number of bonds (or angles) that are observed in the model and the number of bonds (or angles) that are defined in the Chemical Component Dictionary. The Link column lists molecule types, if any, to which the group is linked. The Z score for a bond length (or angle) is the number of standard deviations the observed value is removed from the expected value. A bond length (or angle) with $|Z| > 2$ is considered an outlier worth inspection. RMSZ is the root-mean-square of all Z scores of the bond lengths (or angles).

Mol	Type	Chain	Res	Link	Bond lengths			Bond angles		
					Counts	RMSZ	# Z > 2	Counts	RMSZ	# Z > 2
8	PRF	R	101	-	13,14,14	0.88	1 (7%)	9,20,20	1.44	2 (22%)

In the following table, the Chirals column lists the number of chiral outliers, the number of chiral centers analysed, the number of these observed in the model and the number defined in the Chemical Component Dictionary. Similar counts are reported in the Torsion and Rings columns. '-' means no outliers of that kind were identified.

Mol	Type	Chain	Res	Link	Chirals	Torsions	Rings
8	PRF	R	101	-	-	0/0/2/2	0/2/2/2

All (1) bond length outliers are listed below:

Mol	Chain	Res	Type	Atoms	Z	Observed(Å)	Ideal(Å)
8	R	101	PRF	C5-C6	-2.20	1.42	1.47

All (2) bond angle outliers are listed below:

Mol	Chain	Res	Type	Atoms	Z	Observed(°)	Ideal(°)
8	R	101	PRF	C5-C6-N1	-2.70	113.07	115.36
8	R	101	PRF	C10-C7-C8	2.62	132.25	126.96

There are no chirality outliers.

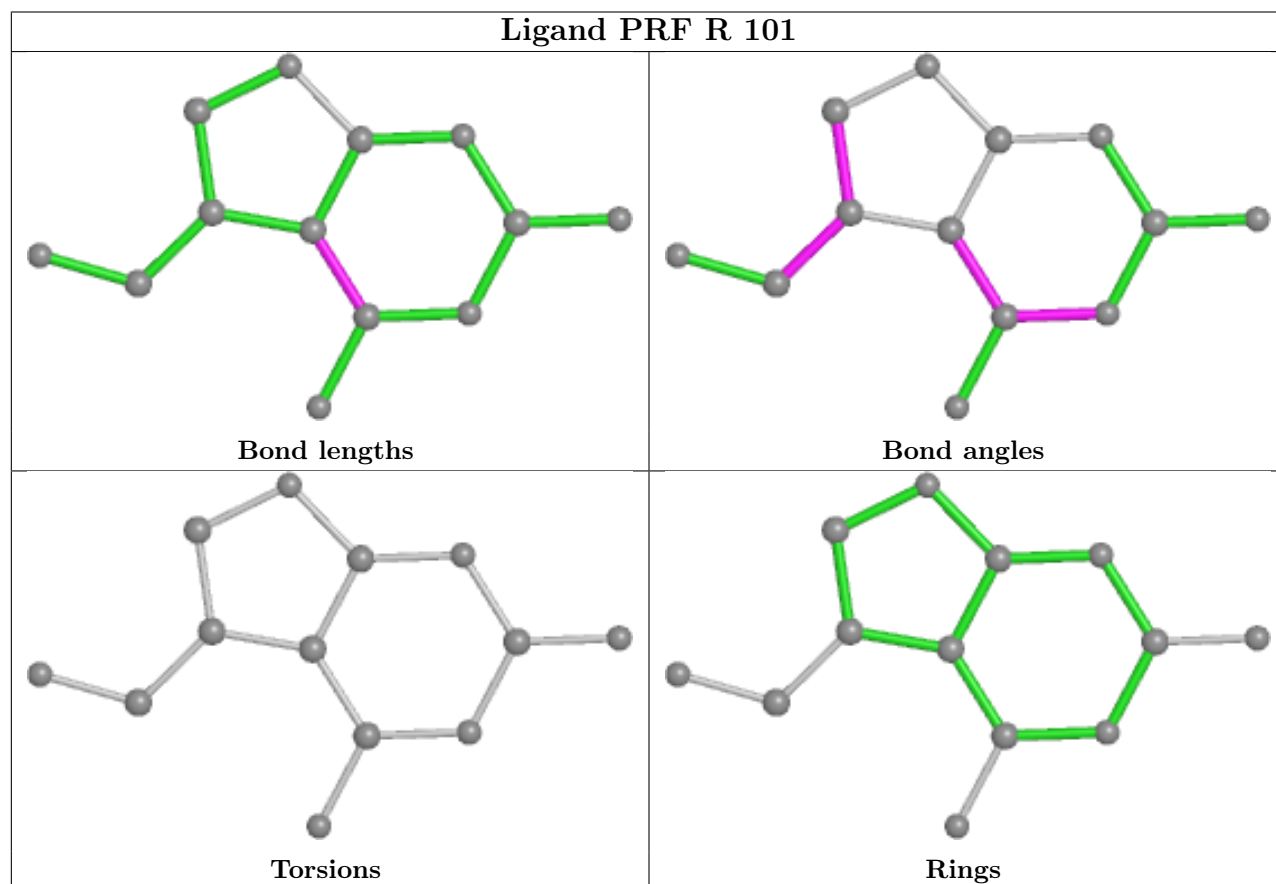
There are no torsion outliers.

There are no ring outliers.

No monomer is involved in short contacts.

The following is a two-dimensional graphical depiction of Mogul quality analysis of bond lengths, bond angles, torsion angles, and ring geometry for all instances of the Ligand of Interest. In addition, ligands with molecular weight > 250 and outliers as shown on the validation Tables will also be included. For torsion angles, if less than 5% of the Mogul distribution of torsion angles is

within 10 degrees of the torsion angle in question, then that torsion angle is considered an outlier. Any bond that is central to one or more torsion angles identified as an outlier by Mogul will be highlighted in the graph. For rings, the root-mean-square deviation (RMSD) between the ring in question and similar rings identified by Mogul is calculated over all ring torsion angles. If the average RMSD is greater than 60 degrees and the minimal RMSD between the ring in question and any Mogul-identified rings is also greater than 60 degrees, then that ring is considered an outlier. The outliers are highlighted in purple. The color gray indicates Mogul did not find sufficient equivalents in the CSD to analyse the geometry.



5.7 Other polymers [i](#)

There are no such residues in this entry.

5.8 Polymer linkage issues [i](#)

The following chains have linkage breaks:

Mol	Chain	Number of breaks
6	I	2

All chain breaks are listed below:

Model	Chain	Residue-1	Atom-1	Residue-2	Atom-2	Distance (Å)
1	I	947:GLU	C	948:ILE	N	1.65
1	I	945:ALA	C	946:LEU	N	1.14

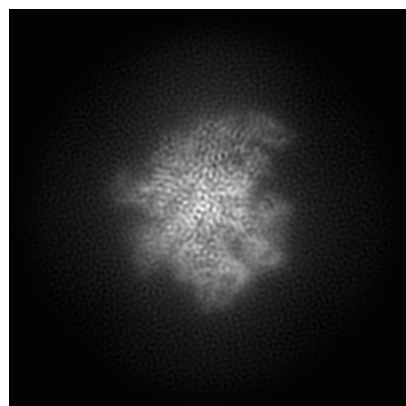
6 Map visualisation [i](#)

This section contains visualisations of the EMDB entry EMD-29812. These allow visual inspection of the internal detail of the map and identification of artifacts.

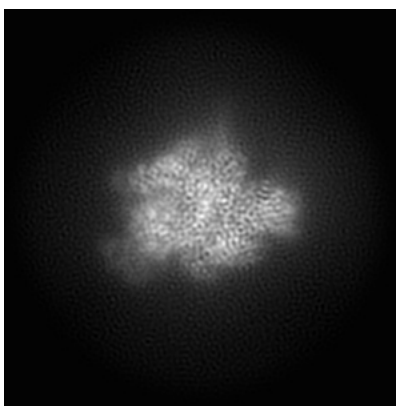
Images derived from a raw map, generated by summing the deposited half-maps, are presented below the corresponding image components of the primary map to allow further visual inspection and comparison with those of the primary map.

6.1 Orthogonal projections [i](#)

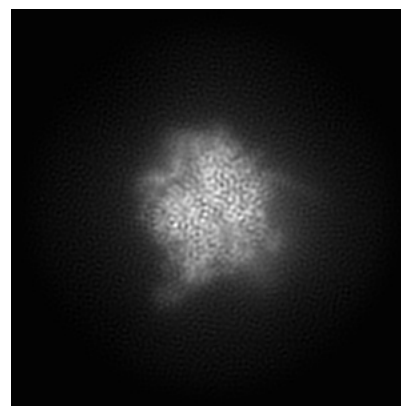
6.1.1 Primary map



X

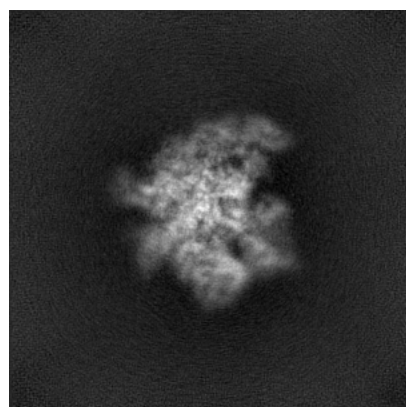


Y

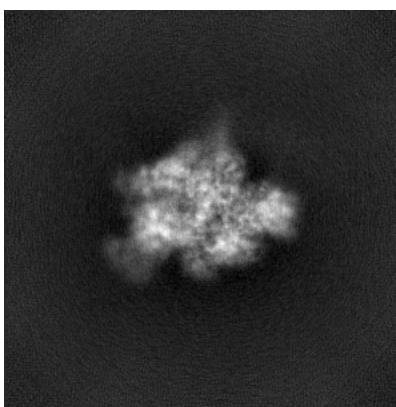


Z

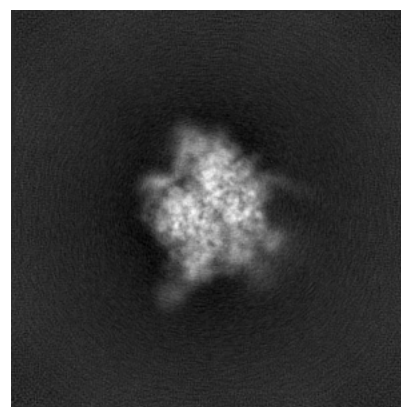
6.1.2 Raw map



X



Y

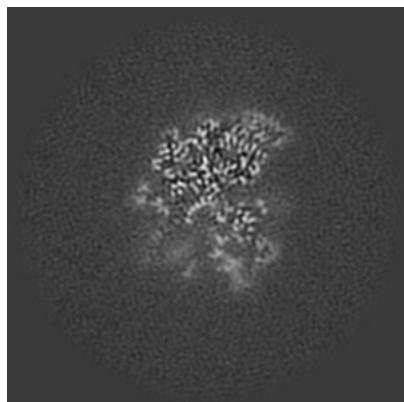


Z

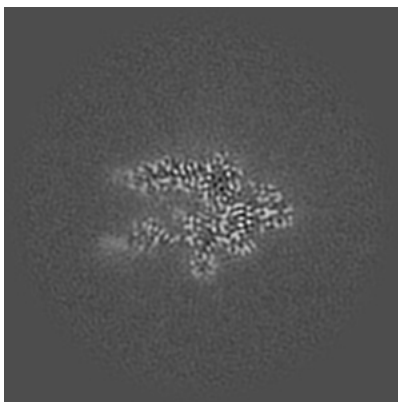
The images above show the map projected in three orthogonal directions.

6.2 Central slices [i](#)

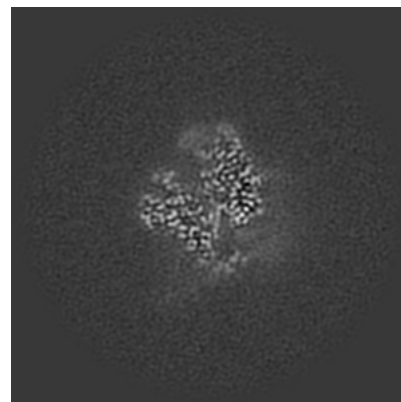
6.2.1 Primary map



X Index: 150

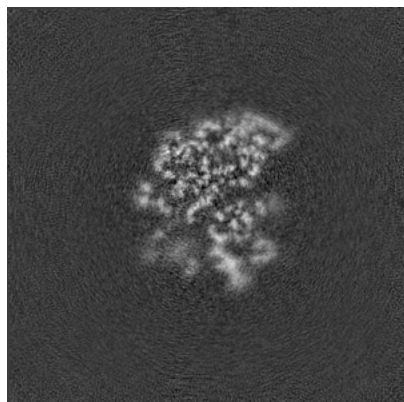


Y Index: 150

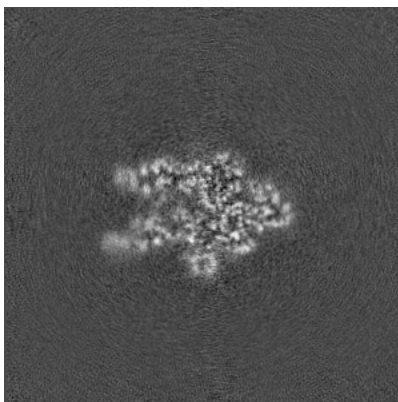


Z Index: 150

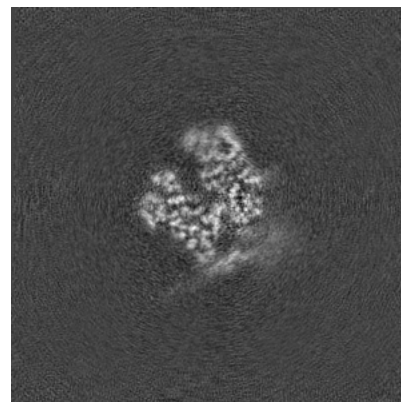
6.2.2 Raw map



X Index: 150



Y Index: 150

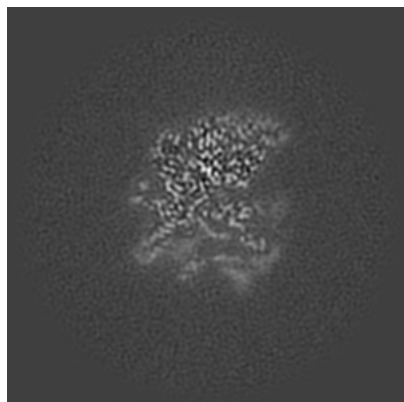


Z Index: 150

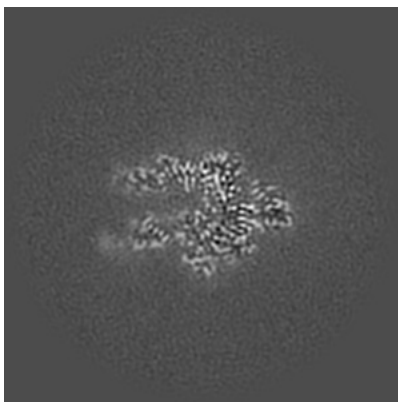
The images above show central slices of the map in three orthogonal directions.

6.3 Largest variance slices [i](#)

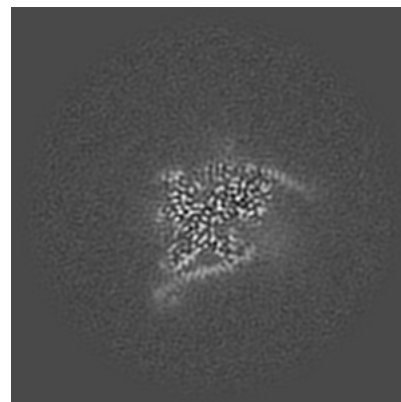
6.3.1 Primary map



X Index: 146

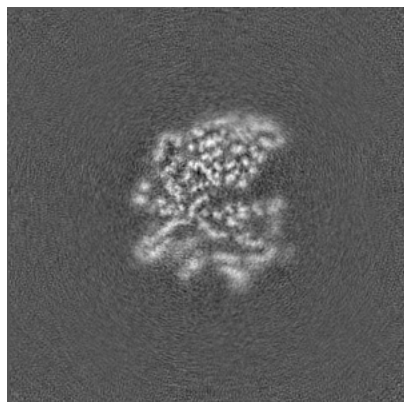


Y Index: 148

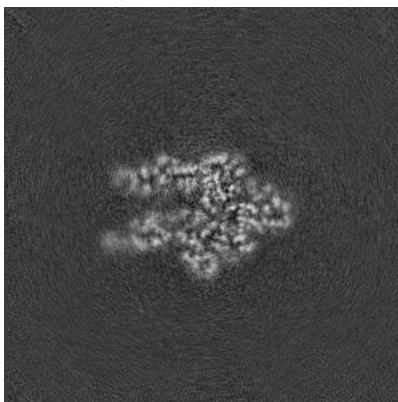


Z Index: 165

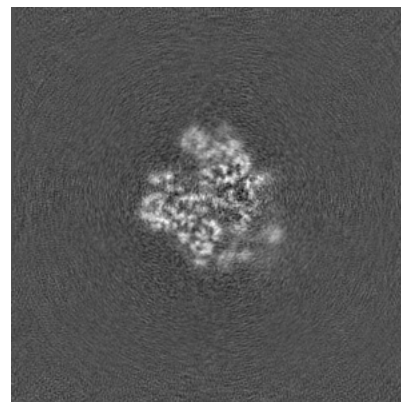
6.3.2 Raw map



X Index: 146



Y Index: 148

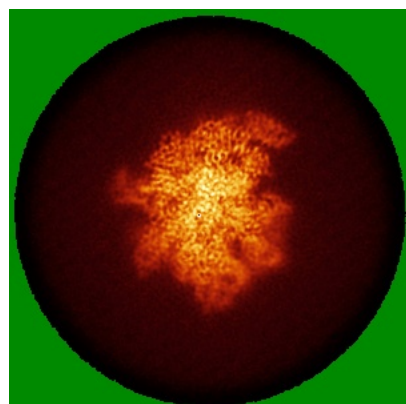


Z Index: 146

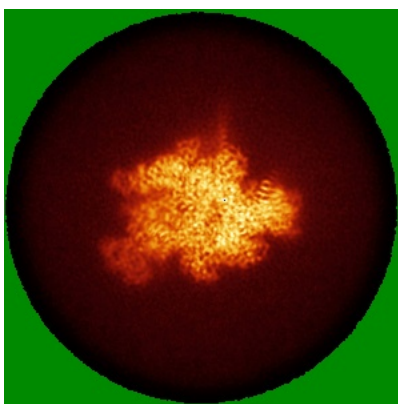
The images above show the largest variance slices of the map in three orthogonal directions.

6.4 Orthogonal standard-deviation projections (False-color) [i](#)

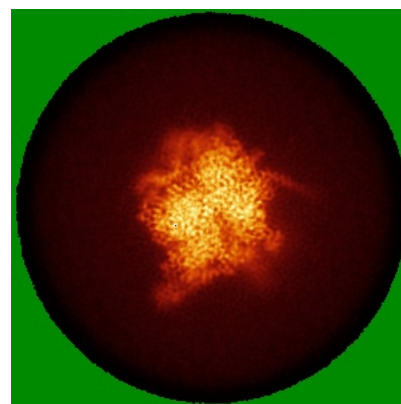
6.4.1 Primary map



X

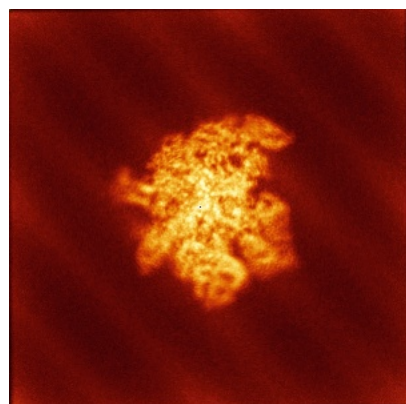


Y

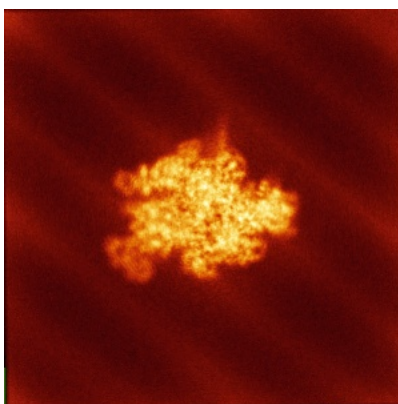


Z

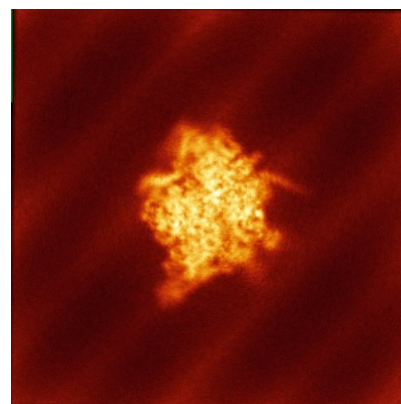
6.4.2 Raw map



X



Y

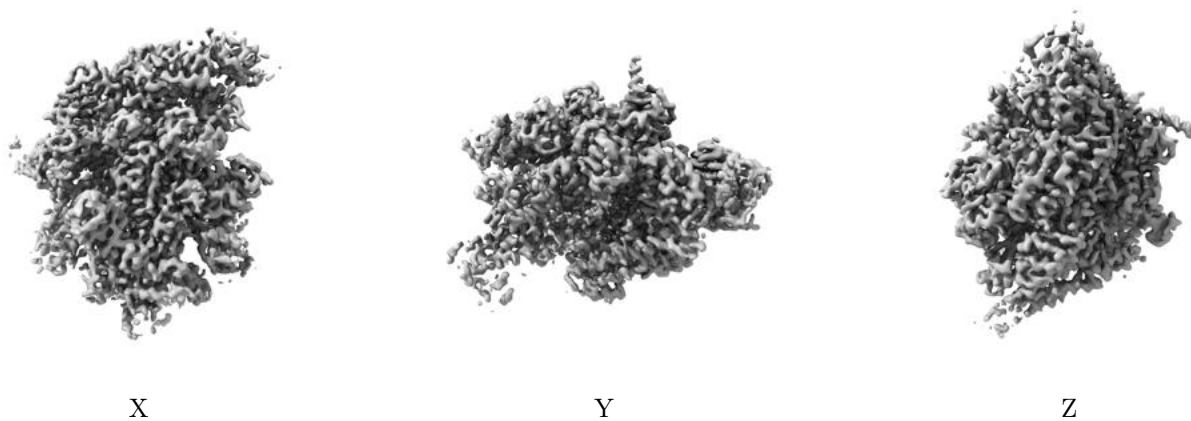


Z

The images above show the map standard deviation projections with false color in three orthogonal directions. Minimum values are shown in green, max in blue, and dark to light orange shades represent small to large values respectively.

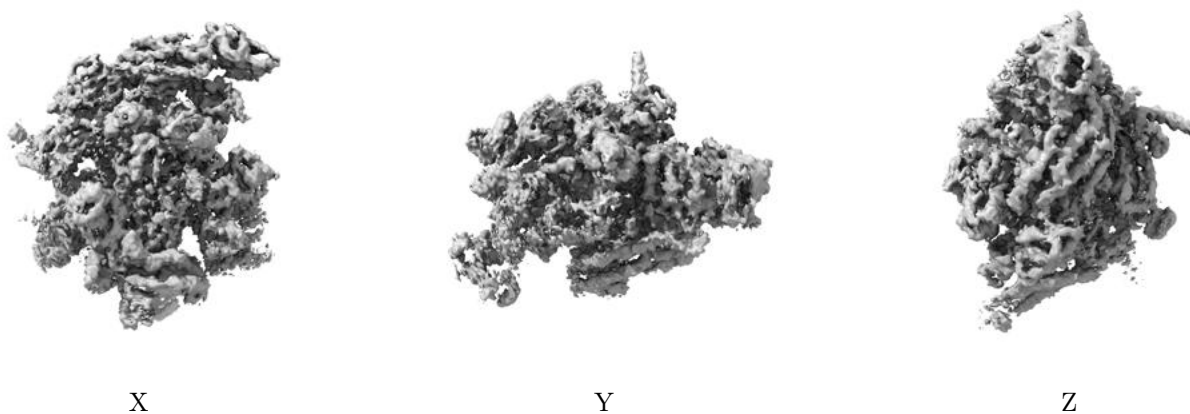
6.5 Orthogonal surface views [i](#)

6.5.1 Primary map



The images above show the 3D surface view of the map at the recommended contour level 0.3. These images, in conjunction with the slice images, may facilitate assessment of whether an appropriate contour level has been provided.

6.5.2 Raw map



These images show the 3D surface of the raw map. The raw map's contour level was selected so that its surface encloses the same volume as the primary map does at its recommended contour level.

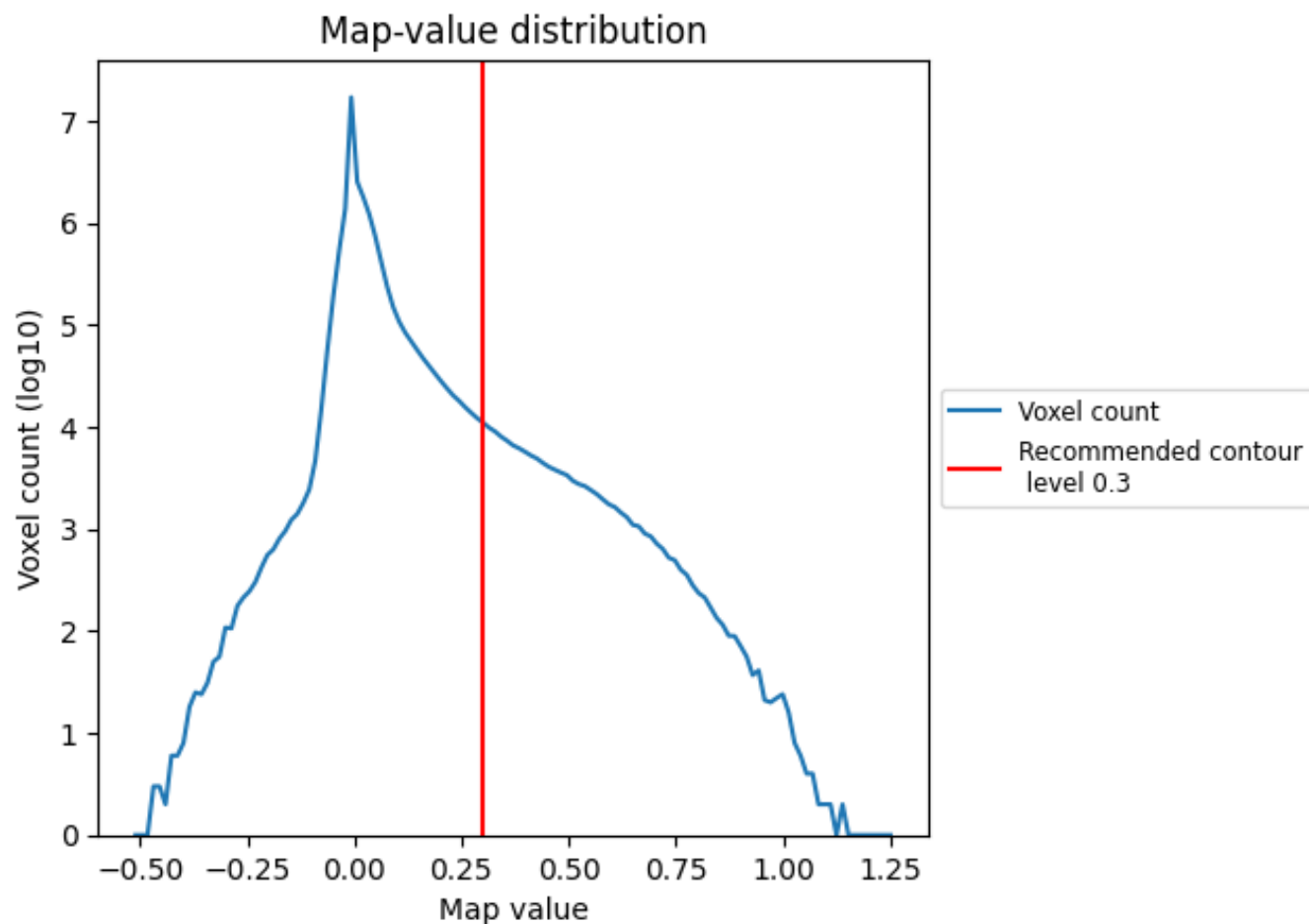
6.6 Mask visualisation [i](#)

This section was not generated. No masks/segmentation were deposited.

7 Map analysis [i](#)

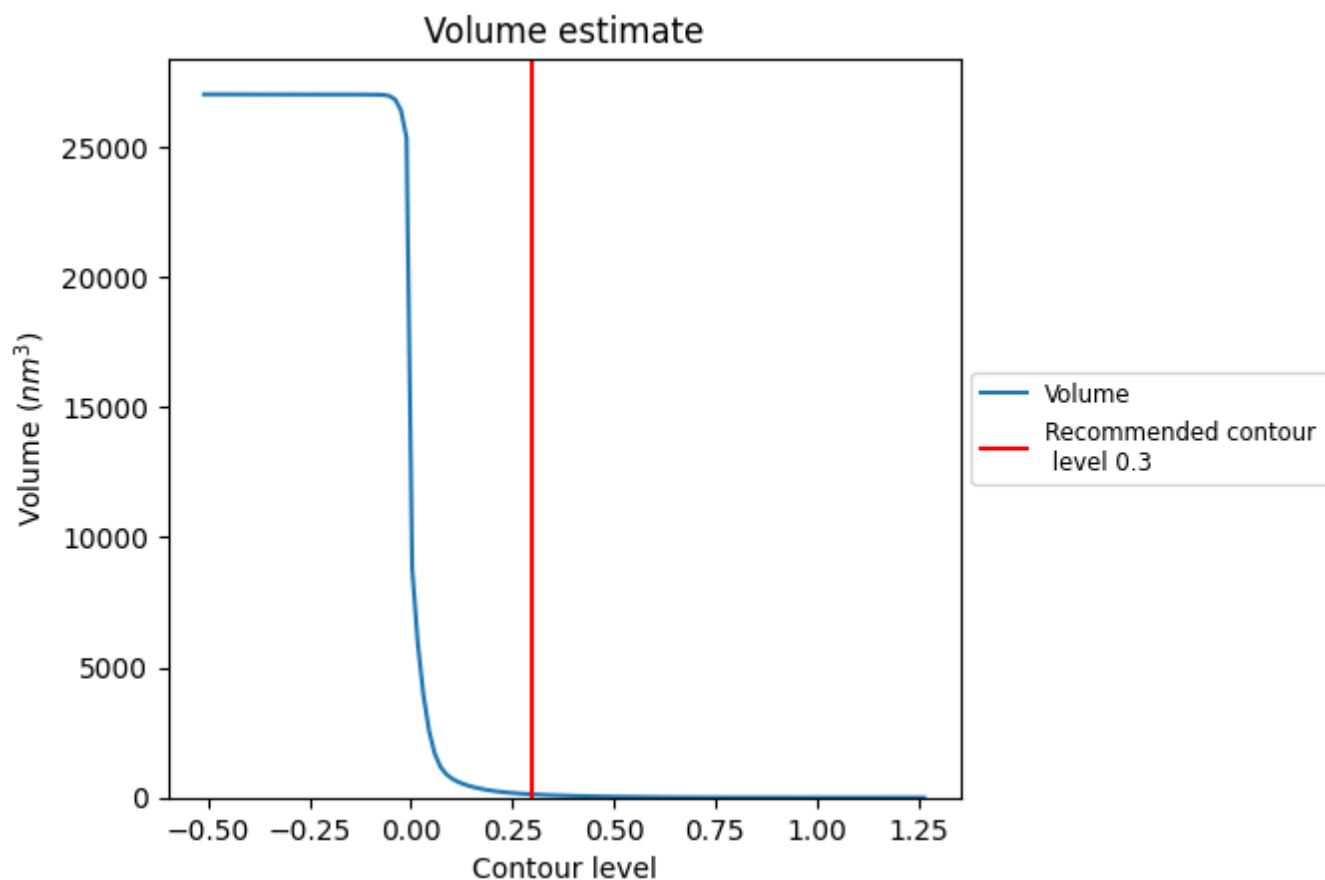
This section contains the results of statistical analysis of the map.

7.1 Map-value distribution [i](#)



The map-value distribution is plotted in 128 intervals along the x-axis. The y-axis is logarithmic. A spike in this graph at zero usually indicates that the volume has been masked.

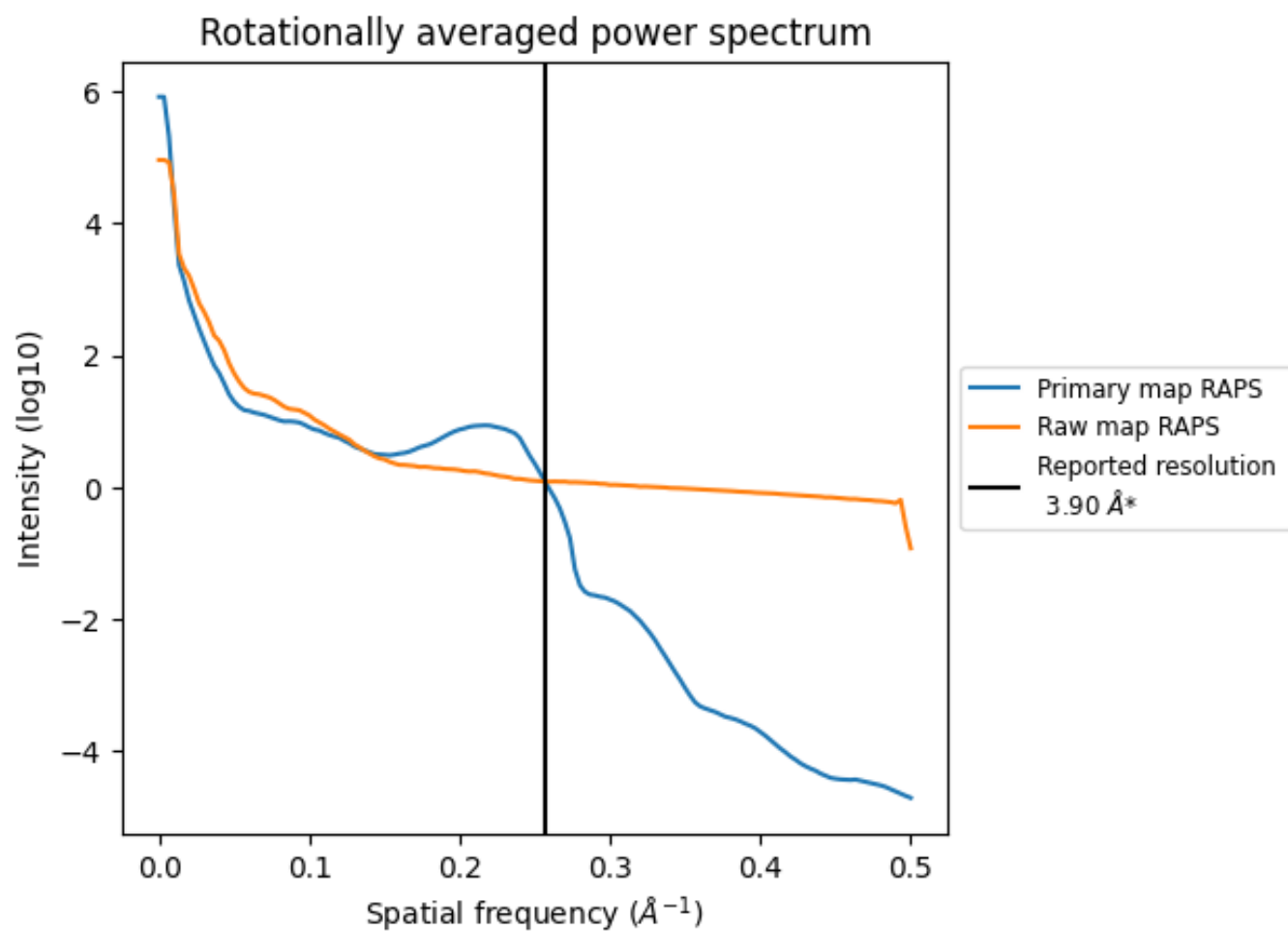
7.2 Volume estimate [i](#)



The volume at the recommended contour level is 123 nm³; this corresponds to an approximate mass of 111 kDa.

The volume estimate graph shows how the enclosed volume varies with the contour level. The recommended contour level is shown as a vertical line and the intersection between the line and the curve gives the volume of the enclosed surface at the given level.

7.3 Rotationally averaged power spectrum ⓘ

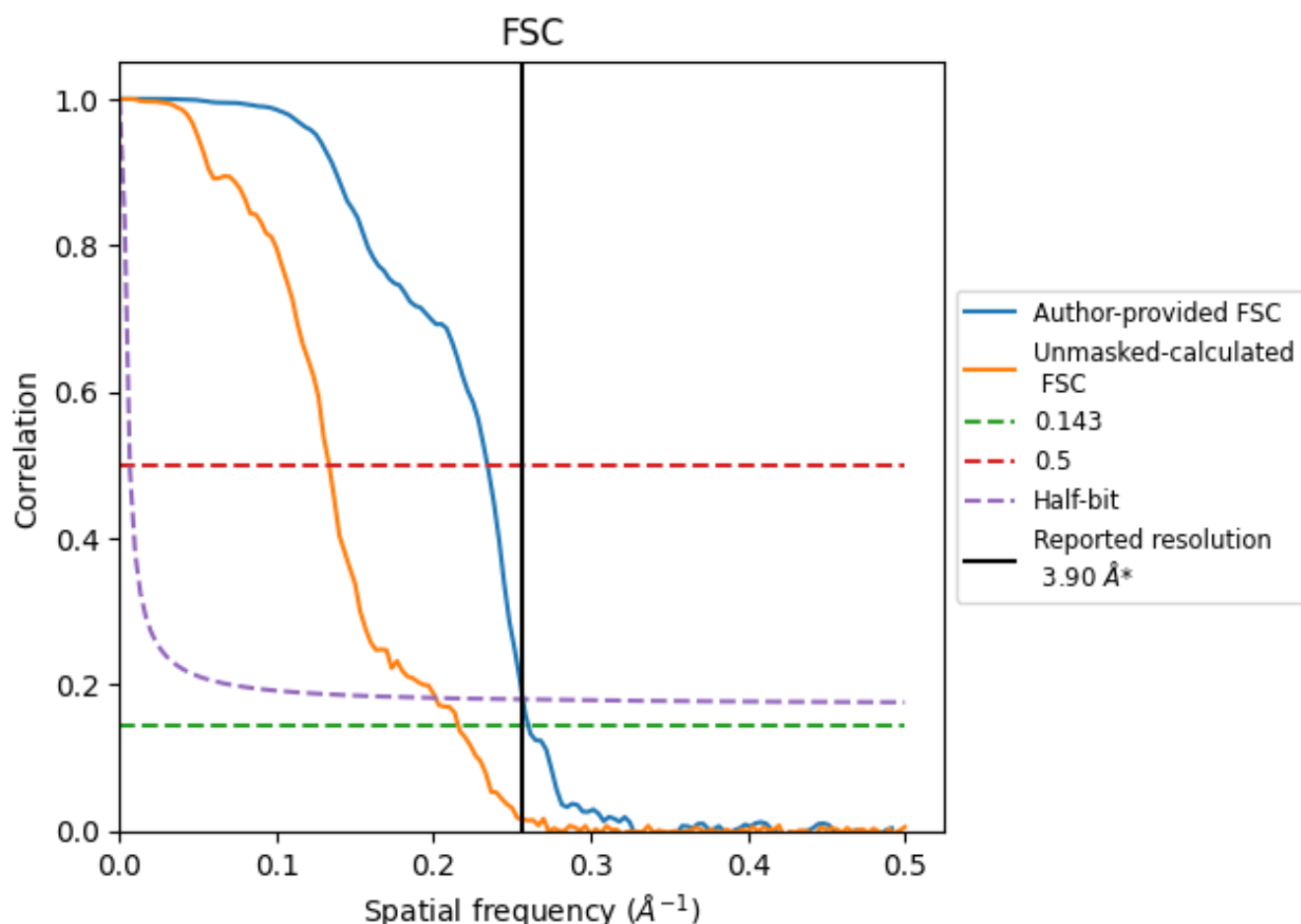


*Reported resolution corresponds to spatial frequency of 0.256 Å⁻¹

8 Fourier-Shell correlation [i](#)

Fourier-Shell Correlation (FSC) is the most commonly used method to estimate the resolution of single-particle and subtomogram-averaged maps. The shape of the curve depends on the imposed symmetry, mask and whether or not the two 3D reconstructions used were processed from a common reference. The reported resolution is shown as a black line. A curve is displayed for the half-bit criterion in addition to lines showing the 0.143 gold standard cut-off and 0.5 cut-off.

8.1 FSC [i](#)



*Reported resolution corresponds to spatial frequency of 0.256 Å⁻¹

8.2 Resolution estimates [i](#)

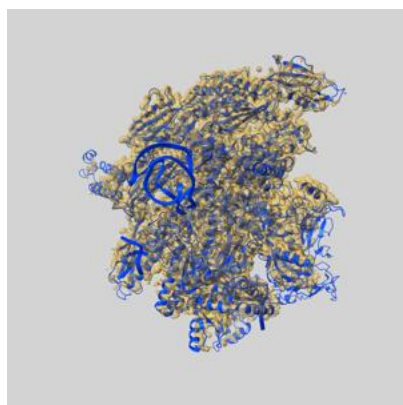
Resolution estimate (Å)	Estimation criterion (FSC cut-off)		
	0.143	0.5	Half-bit
Reported by author	3.90	-	-
Author-provided FSC curve	3.84	4.27	3.89
Unmasked-calculated*	4.63	7.49	4.97

*Resolution estimate based on FSC curve calculated by comparison of deposited half-maps. The value from deposited half-maps intersecting FSC 0.143 CUT-OFF 4.63 differs from the reported value 3.9 by more than 10 %

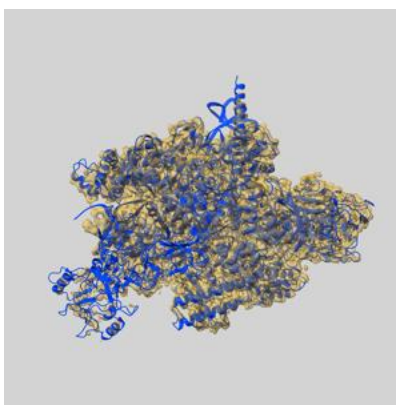
9 Map-model fit [i](#)

This section contains information regarding the fit between EMDB map EMD-29812 and PDB model 8G7E. Per-residue inclusion information can be found in section [3](#) on page [7](#).

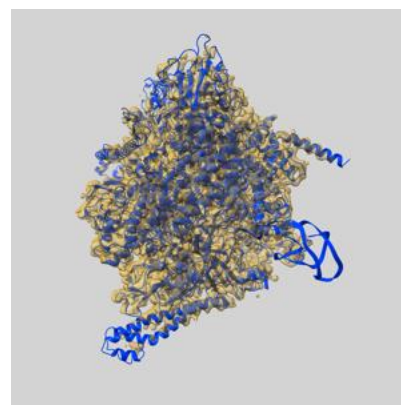
9.1 Map-model overlay [i](#)



X



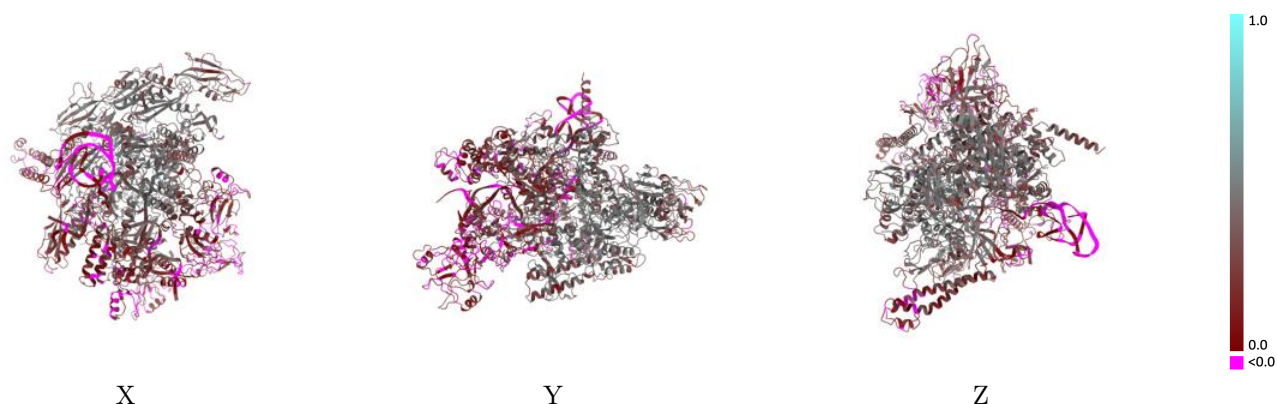
Y



Z

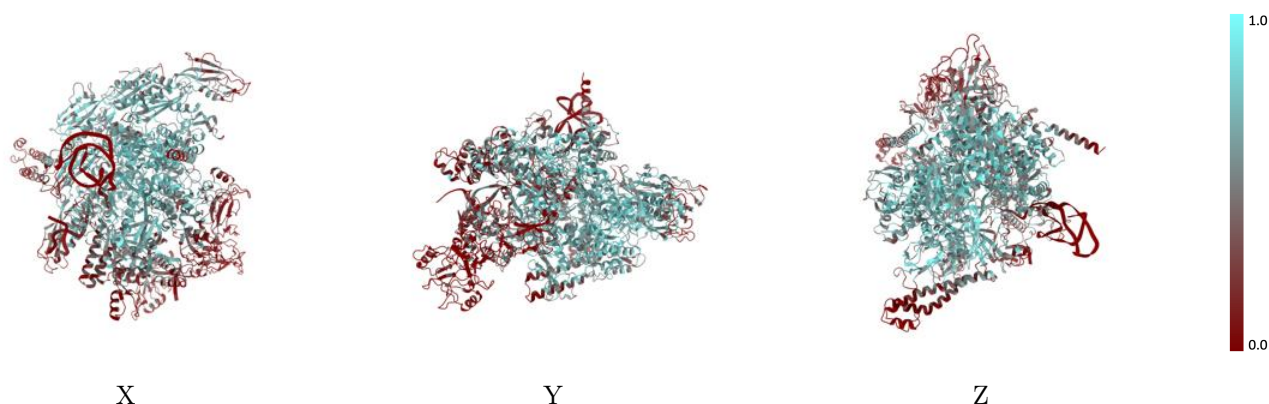
The images above show the 3D surface view of the map at the recommended contour level 0.3 at 50% transparency in yellow overlaid with a ribbon representation of the model coloured in blue. These images allow for the visual assessment of the quality of fit between the atomic model and the map.

9.2 Q-score mapped to coordinate model [i](#)



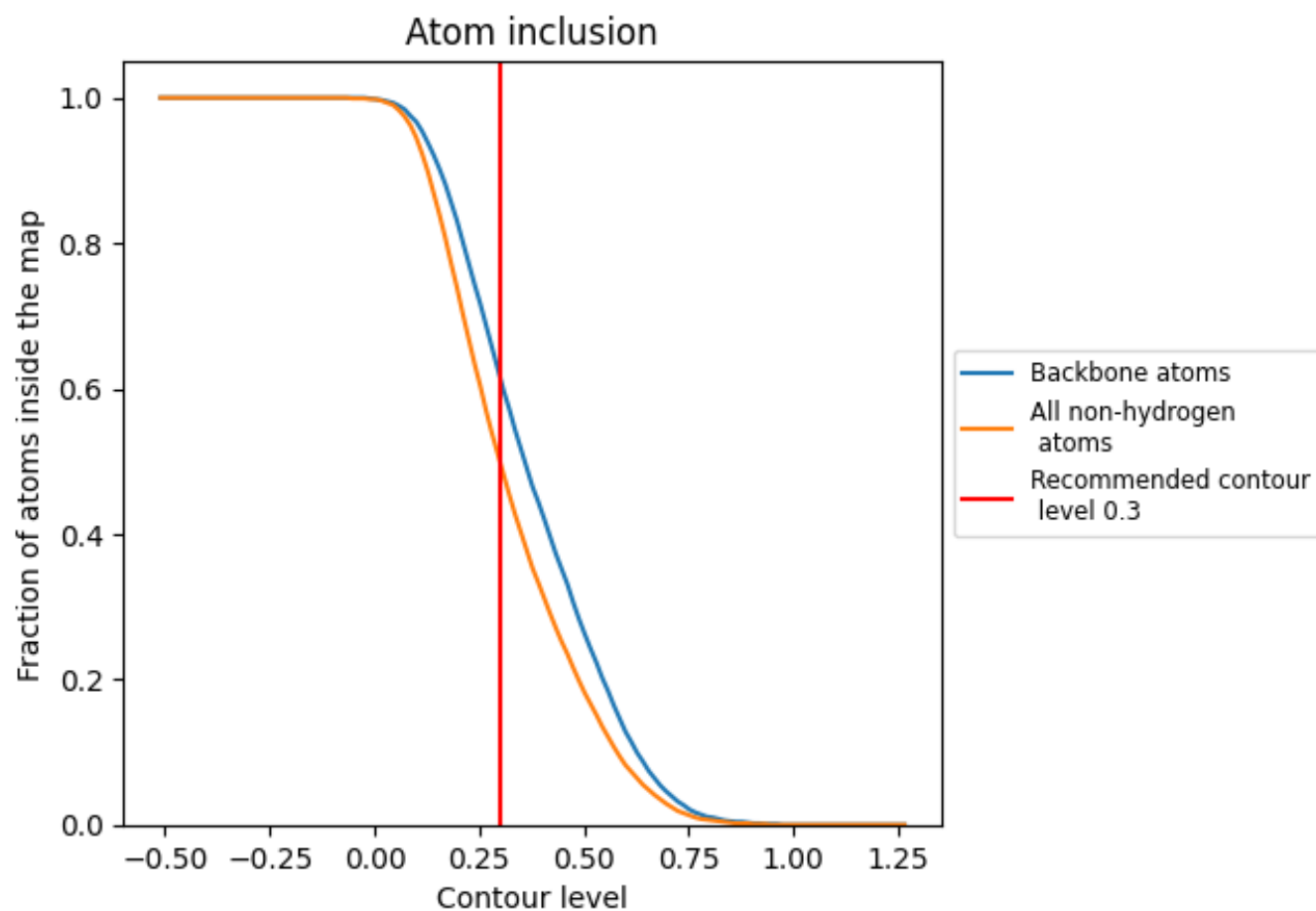
The images above show the model with each residue coloured according to its Q-score. This shows their resolvability in the map with higher Q-score values reflecting better resolvability. Please note: Q-score is calculating the resolvability of atoms, and thus high values are only expected at resolutions at which atoms can be resolved. Low Q-score values may therefore be expected for many entries.

9.3 Atom inclusion mapped to coordinate model [i](#)



The images above show the model with each residue coloured according to its atom inclusion. This shows to what extent they are inside the map at the recommended contour level (0.3).

9.4 Atom inclusion [i](#)



At the recommended contour level, 61% of all backbone atoms, 50% of all non-hydrogen atoms, are inside the map.

9.5 Map-model fit summary ⓘ

The table lists the average atom inclusion at the recommended contour level (0.3) and Q-score for the entire model and for each chain.

Chain	Atom inclusion	Q-score
All	<div></div> 0.4980	<div></div> 0.2940
A	<div></div> 0.4100	<div></div> 0.1450
B	<div></div> 0.5070	<div></div> 0.2540
G	<div></div> 0.6460	<div></div> 0.4030
H	<div></div> 0.4940	<div></div> 0.3630
I	<div></div> 0.5460	<div></div> 0.3340
J	<div></div> 0.4610	<div></div> 0.2530
K	<div></div> 0.5380	<div></div> 0.3480
R	<div></div> 0.1530	<div></div> 0.0500

1.0

0.0

<0.0