



Full wwPDB X-ray Structure Validation Report ⓘ

Oct 13, 2024 – 07:20 pm BST

PDB ID : 5G3U
Title : The structure of the L-tryptophan oxidase VioA from *Chromobacterium violaceum* in complex with its inhibitor 2-(1H-indol-3-ylmethyl)prop-2-enoic acid
Authors : Krausze, J.; Rabe, J.; Moser, J.
Deposited on : 2016-05-01
Resolution : 2.38 Å(reported)

This is a Full wwPDB X-ray Structure Validation Report for a publicly released PDB entry.

We welcome your comments at validation@mail.wwpdb.org

A user guide is available at

<https://www.wwpdb.org/validation/2017/XrayValidationReportHelp>

with specific help available everywhere you see the ⓘ symbol.

The types of validation reports are described at

<http://www.wwpdb.org/validation/2017/FAQs#types>.

The following versions of software and data (see [references ⓘ](#)) were used in the production of this report:

MolProbity	:	4.02b-467
Mogul	:	1.8.4, CSD as541be (2020)
Xtriage (Phenix)	:	1.13
EDS	:	3.0
buster-report	:	1.1.7 (2018)
Percentile statistics	:	20231227.v01 (using entries in the PDB archive December 27th 2023)
CCP4	:	9.0.003 (Gargrove)
Density-Fitness	:	1.0.11
Ideal geometry (proteins)	:	Engh & Huber (2001)
Ideal geometry (DNA, RNA)	:	Parkinson et al. (1996)
Validation Pipeline (wwPDB-VP)	:	2.39

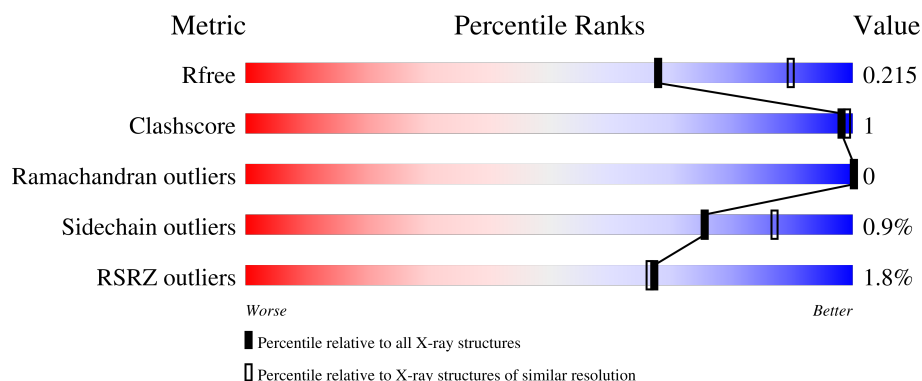
1 Overall quality at a glance

The following experimental techniques were used to determine the structure:

X-RAY DIFFRACTION

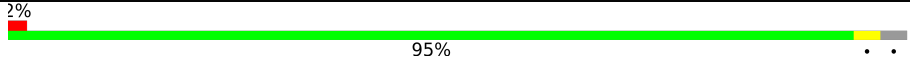
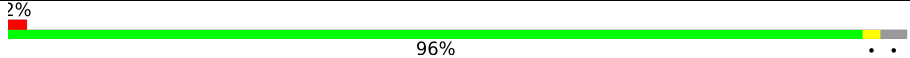
The reported resolution of this entry is 2.38 Å.

Percentile scores (ranging between 0-100) for global validation metrics of the entry are shown in the following graphic. The table shows the number of entries on which the scores are based.



Metric	Whole archive (#Entries)	Similar resolution (#Entries, resolution range(Å))
R_{free}	164625	6699 (2.40-2.36)
Clashscore	180529	7414 (2.40-2.36)
Ramachandran outliers	177936	7337 (2.40-2.36)
Sidechain outliers	177891	7338 (2.40-2.36)
RSRZ outliers	164620	6699 (2.40-2.36)

The table below summarises the geometric issues observed across the polymeric chains and their fit to the electron density. The red, orange, yellow and green segments of the lower bar indicate the fraction of residues that contain outliers for ≥ 3 , 2, 1 and 0 types of geometric quality criteria respectively. A grey segment represents the fraction of residues that are not modelled. The numeric value for each fraction is indicated below the corresponding segment, with a dot representing fractions $\leq 5\%$. The upper red bar (where present) indicates the fraction of residues that have poor fit to the electron density. The numeric value is given above the bar.

Mol	Chain	Length	Quality of chain
1	A	423	
1	B	423	

2 Entry composition

There are 5 unique types of molecules in this entry. The entry contains 13065 atoms, of which 6228 are hydrogens and 0 are deuteriums.

In the tables below, the ZeroOcc column contains the number of atoms modelled with zero occupancy, the AltConf column contains the number of residues with at least one atom in alternate conformation and the Trace column contains the number of residues modelled with at most 2 atoms.

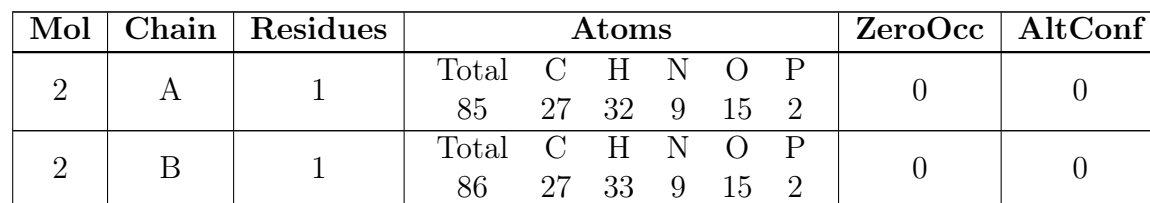
- Molecule 1 is a protein called L-TRYPTOPHAN OXIDASE VIOA.

Mol	Chain	Residues	Atoms						ZeroOcc	AltConf	Trace
1	A	412	Total	C	H	N	O	S	0	0	0
			6291	2037	3085	562	589	18			
1	B	412	Total	C	H	N	O	S	0	1	0
			6242	2033	3050	554	587	18			

There are 12 discrepancies between the modelled and reference sequences:

Chain	Residue	Modelled	Actual	Comment	Reference
A	-4	GLY	-	expression tag	UNP Q9S3V1
A	-3	PRO	-	expression tag	UNP Q9S3V1
A	-2	LEU	-	expression tag	UNP Q9S3V1
A	-1	GLY	-	expression tag	UNP Q9S3V1
A	0	SER	-	expression tag	UNP Q9S3V1
A	3	GLN	HIS	engineered mutation	UNP Q9S3V1
B	-4	GLY	-	expression tag	UNP Q9S3V1
B	-3	PRO	-	expression tag	UNP Q9S3V1
B	-2	LEU	-	expression tag	UNP Q9S3V1
B	-1	GLY	-	expression tag	UNP Q9S3V1
B	0	SER	-	expression tag	UNP Q9S3V1
B	3	GLN	HIS	engineered mutation	UNP Q9S3V1

- Molecule 2 is DIHYDROFLAVINE-ADENINE DINUCLEOTIDE (three-letter code: FDA) (formula: C₂₇H₃₅N₉O₁₅P₂).



-
- The chemical structure of Indole-3-pyruvate (ITW) is shown. The indole ring system consists of a benzene ring fused to a pyrrole ring. The atoms are labeled as follows: C11, C12, C13, C14, C15 for the benzene ring; N09 and C08 for the pyrrole ring; C07, C06, C04, C05 for the pyruvate side chain; and C02, O01, O03 for the carboxylate group. The structure is drawn with green lines and labels, and the carboxylate group is highlighted in red.

Mol	Chain	Residues	Atoms					ZeroOcc	AltConf
3	A	1	Total	C	H	N	O	0	0
			25	12	10	1	2		

Continued on next page...

Continued from previous page...

Mol	Chain	Residues	Atoms					ZeroOcc	AltConf
3	B	1	Total	C	H	N	O	0	0
			25	12	10	1	2		

- Molecule 4 is GLYCEROL (three-letter code: GOL) (formula: $C_3H_8O_3$).



Mol	Chain	Residues	Atoms				ZeroOcc	AltConf
4	B	1	Total	C	H	O	0	0
			14	3	8	3		

- Molecule 5 is water.

Mol	Chain	Residues	Atoms		ZeroOcc	AltConf
5	A	179	Total	O	0	0
			179	179		
5	B	118	Total	O	0	0
			118	118		

3 Residue-property plots [i](#)

These plots are drawn for all protein, RNA, DNA and oligosaccharide chains in the entry. The first graphic for a chain summarises the proportions of the various outlier classes displayed in the second graphic. The second graphic shows the sequence view annotated by issues in geometry and electron density. Residues are color-coded according to the number of geometric quality criteria for which they contain at least one outlier: green = 0, yellow = 1, orange = 2 and red = 3 or more. A red dot above a residue indicates a poor fit to the electron density ($RSRZ > 2$). Stretches of 2 or more consecutive residues without any outlier are shown as a green connector. Residues present in the sample, but not in the model, are shown in grey.

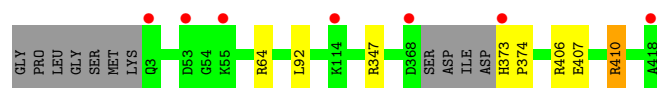
- Molecule 1: L-TRYPTOPHAN OXIDASE VIOA

Chain A:



- Molecule 1: L-TRYPTOPHAN OXIDASE VIOA

Chain B:



4 Data and refinement statistics

Property	Value	Source
Space group	P 21 21 21	Depositor
Cell constants a, b, c, α , β , γ	69.27Å 81.46Å 167.12Å 90.00° 90.00° 90.00°	Depositor
Resolution (Å)	45.98 – 2.38 45.98 – 2.38	Depositor EDS
% Data completeness (in resolution range)	100.0 (45.98-2.38) 100.0 (45.98-2.38)	Depositor EDS
R_{merge}	0.16	Depositor
R_{sym}	(Not available)	Depositor
$\langle I/\sigma(I) \rangle$ ¹	2.88 (at 2.37Å)	Xtriage
Refinement program	PHENIX (PHENIX.REFINE)	Depositor
R, R_{free}	0.177 , 0.213 0.178 , 0.215	Depositor DCC
R_{free} test set	1944 reflections (5.00%)	wwPDB-VP
Wilson B-factor (Å ²)	26.0	Xtriage
Anisotropy	0.304	Xtriage
Bulk solvent k_{sol} (e/Å ³), B_{sol} (Å ²)	0.39 , 40.2	EDS
L-test for twinning ²	$\langle L \rangle = 0.48$, $\langle L^2 \rangle = 0.31$	Xtriage
Estimated twinning fraction	No twinning to report.	Xtriage
F_o, F_c correlation	0.94	EDS
Total number of atoms	13065	wwPDB-VP
Average B, all atoms (Å ²)	34.0	wwPDB-VP

Xtriage's analysis on translational NCS is as follows: *The largest off-origin peak in the Patterson function is 4.50% of the height of the origin peak. No significant pseudotranslation is detected.*

¹Intensities estimated from amplitudes.

²Theoretical values of $\langle |L| \rangle$, $\langle L^2 \rangle$ for acentric reflections are 0.5, 0.333 respectively for untwinned datasets, and 0.375, 0.2 for perfectly twinned datasets.

5 Model quality

5.1 Standard geometry

Bond lengths and bond angles in the following residue types are not validated in this section: GOL, ITW, CSS, FDA

The Z score for a bond length (or angle) is the number of standard deviations the observed value is removed from the expected value. A bond length (or angle) with $|Z| > 5$ is considered an outlier worth inspection. RMSZ is the root-mean-square of all Z scores of the bond lengths (or angles).

Mol	Chain	Bond lengths		Bond angles	
		RMSZ	# Z >5	RMSZ	# Z >5
1	A	0.25	0/3279	0.42	0/4433
1	B	0.24	0/3275	0.42	0/4431
All	All	0.24	0/6554	0.42	0/8864

There are no bond length outliers.

There are no bond angle outliers.

There are no chirality outliers.

There are no planarity outliers.

5.2 Too-close contacts

In the following table, the Non-H and H(model) columns list the number of non-hydrogen atoms and hydrogen atoms in the chain respectively. The H(added) column lists the number of hydrogen atoms added and optimized by MolProbity. The Clashes column lists the number of clashes within the asymmetric unit, whereas Symm-Clashes lists symmetry-related clashes.

Mol	Chain	Non-H	H(model)	H(added)	Clashes	Symm-Clashes
1	A	3206	3085	3081	5	0
1	B	3192	3050	3040	3	0
2	A	53	32	33	0	0
2	B	53	33	33	0	0
3	A	15	10	0	0	0
3	B	15	10	0	0	0
4	B	6	8	8	0	0
5	A	179	0	0	1	0
5	B	118	0	0	1	0
All	All	6837	6228	6195	8	0

The all-atom clashscore is defined as the number of clashes found per 1000 atoms (including

hydrogen atoms). The all-atom clashscore for this structure is 1.

All (8) close contacts within the same asymmetric unit are listed below, sorted by their clash magnitude.

Atom-1	Atom-2	Interatomic distance (Å)	Clash overlap (Å)
1:B:407:GLU:OE2	1:B:410:ARG:NH1	2.33	0.61
1:A:389:ASP:OD1	5:A:2025:HOH:O	2.18	0.53
1:B:406:ARG:NH1	5:B:2115:HOH:O	2.35	0.50
1:A:216:ASP:O	1:A:235:ARG:NH1	2.44	0.50
1:A:334:ARG:NE	1:A:348:ILE:O	2.49	0.46
1:A:407:GLU:OE2	1:A:410:ARG:NH1	2.52	0.43
1:A:110:SER:N	1:A:111:PRO:HD2	2.35	0.42
1:B:373:HIS:N	1:B:374:PRO:CD	2.83	0.42

There are no symmetry-related clashes.

5.3 Torsion angles [i](#)

5.3.1 Protein backbone [i](#)

In the following table, the Percentiles column shows the percent Ramachandran outliers of the chain as a percentile score with respect to all X-ray entries followed by that with respect to entries of similar resolution.

The Analysed column shows the number of residues for which the backbone conformation was analysed, and the total number of residues.

Mol	Chain	Analysed	Favoured	Allowed	Outliers	Percentiles	
1	A	407/423 (96%)	398 (98%)	9 (2%)	0	100	100
1	B	408/423 (96%)	396 (97%)	12 (3%)	0	100	100
All	All	815/846 (96%)	794 (97%)	21 (3%)	0	100	100

There are no Ramachandran outliers to report.

5.3.2 Protein sidechains [i](#)

In the following table, the Percentiles column shows the percent sidechain outliers of the chain as a percentile score with respect to all X-ray entries followed by that with respect to entries of similar resolution.

The Analysed column shows the number of residues for which the sidechain conformation was analysed, and the total number of residues.

Mol	Chain	Analysed	Rotameric	Outliers	Percentiles	
1	A	323/343 (94%)	321 (99%)	2 (1%)	84	92
1	B	320/343 (93%)	316 (99%)	4 (1%)	65	80
All	All	643/686 (94%)	637 (99%)	6 (1%)	75	87

All (6) residues with a non-rotameric sidechain are listed below:

Mol	Chain	Res	Type
1	A	3	GLN
1	A	64	ARG
1	B	64	ARG
1	B	92	LEU
1	B	347	ARG
1	B	410	ARG

Sometimes sidechains can be flipped to improve hydrogen bonding and reduce clashes. There are no such sidechains identified.

5.3.3 RNA ⓘ

There are no RNA molecules in this entry.

5.4 Non-standard residues in protein, DNA, RNA chains ⓘ

2 non-standard protein/DNA/RNA residues are modelled in this entry.

In the following table, the Counts columns list the number of bonds (or angles) for which Mogul statistics could be retrieved, the number of bonds (or angles) that are observed in the model and the number of bonds (or angles) that are defined in the Chemical Component Dictionary. The Link column lists molecule types, if any, to which the group is linked. The Z score for a bond length (or angle) is the number of standard deviations the observed value is removed from the expected value. A bond length (or angle) with $|Z| > 2$ is considered an outlier worth inspection. RMSZ is the root-mean-square of all Z scores of the bond lengths (or angles).

Mol	Type	Chain	Res	Link	Bond lengths			Bond angles		
					Counts	RMSZ	$\# Z > 2$	Counts	RMSZ	$\# Z > 2$
1	CSS	A	321	1	4,6,7	1.18	0	1,6,8	0.49	0
1	CSS	B	321	1	4,6,7	1.15	0	1,6,8	0.51	0

In the following table, the Chirals column lists the number of chiral outliers, the number of chiral centers analysed, the number of these observed in the model and the number defined in the Chemical Component Dictionary. Similar counts are reported in the Torsion and Rings columns. '-' means no outliers of that kind were identified.

Mol	Type	Chain	Res	Link	Chirals	Torsions	Rings
1	CSS	A	321	1	-	0/1/5/7	-
1	CSS	B	321	1	-	0/1/5/7	-

There are no bond length outliers.

There are no bond angle outliers.

There are no chirality outliers.

There are no torsion outliers.

There are no ring outliers.

No monomer is involved in short contacts.

5.5 Carbohydrates [i](#)

There are no oligosaccharides in this entry.

5.6 Ligand geometry [i](#)

5 ligands are modelled in this entry.

In the following table, the Counts columns list the number of bonds (or angles) for which Mogul statistics could be retrieved, the number of bonds (or angles) that are observed in the model and the number of bonds (or angles) that are defined in the Chemical Component Dictionary. The Link column lists molecule types, if any, to which the group is linked. The Z score for a bond length (or angle) is the number of standard deviations the observed value is removed from the expected value. A bond length (or angle) with $|Z| > 2$ is considered an outlier worth inspection. RMSZ is the root-mean-square of all Z scores of the bond lengths (or angles).

Mol	Type	Chain	Res	Link	Bond lengths			Bond angles		
					Counts	RMSZ	# Z > 2	Counts	RMSZ	# Z > 2
2	FDA	A	419	-	52,58,58	1.85	11 (21%)	60,89,89	1.26	6 (10%)
3	ITW	B	420	-	15,16,16	2.61	6 (40%)	17,22,22	4.13	6 (35%)
3	ITW	A	420	-	15,16,16	2.55	7 (46%)	17,22,22	4.27	7 (41%)
4	GOL	B	421	-	5,5,5	0.41	0	5,5,5	0.21	0
2	FDA	B	419	-	52,58,58	1.86	11 (21%)	60,89,89	1.26	6 (10%)

In the following table, the Chirals column lists the number of chiral outliers, the number of chiral centers analysed, the number of these observed in the model and the number defined in the Chemical Component Dictionary. Similar counts are reported in the Torsion and Rings columns. '-' means no outliers of that kind were identified.

Mol	Type	Chain	Res	Link	Chirals	Torsions	Rings
2	FDA	A	419	-	-	1/30/50/50	0/6/6/6
3	ITW	B	420	-	-	0/8/8/8	0/2/2/2
3	ITW	A	420	-	-	0/8/8/8	0/2/2/2
4	GOL	B	421	-	-	4/4/4/4	-
2	FDA	B	419	-	-	5/30/50/50	0/6/6/6

All (35) bond length outliers are listed below:

Mol	Chain	Res	Type	Atoms	Z	Observed(Å)	Ideal(Å)
2	B	419	FDA	C5X-C9A	7.47	1.49	1.40
2	A	419	FDA	C5X-C9A	7.45	1.49	1.40
3	B	420	ITW	C02-C04	6.98	1.54	1.49
3	A	420	ITW	C02-C04	6.57	1.54	1.49
2	A	419	FDA	C4X-N5	4.52	1.45	1.35
2	B	419	FDA	C4X-N5	4.46	1.45	1.35
2	A	419	FDA	C10-N1	4.42	1.45	1.37
2	B	419	FDA	C10-N1	4.41	1.45	1.37
3	B	420	ITW	C08-N09	4.31	1.45	1.36
3	A	420	ITW	C08-N09	4.19	1.45	1.36
2	B	419	FDA	C10-N10	4.15	1.45	1.38
2	A	419	FDA	C10-N10	4.00	1.45	1.38
2	B	419	FDA	C8-C7	3.45	1.49	1.40
2	A	419	FDA	C8-C7	3.44	1.49	1.40
3	B	420	ITW	C13-C14	3.13	1.43	1.36
3	A	420	ITW	C13-C14	3.13	1.43	1.36
2	B	419	FDA	C4X-C4	3.05	1.50	1.42
2	A	419	FDA	C4X-C4	3.03	1.50	1.42
2	B	419	FDA	C4-N3	-2.55	1.34	1.38
2	A	419	FDA	C5X-N5	-2.54	1.35	1.39
2	B	419	FDA	C5X-N5	-2.53	1.35	1.39
2	A	419	FDA	C4-N3	-2.50	1.34	1.38
2	B	419	FDA	C2-N1	-2.44	1.33	1.37
2	A	419	FDA	C2-N1	-2.42	1.33	1.37
3	B	420	ITW	C13-C12	2.35	1.44	1.38
3	B	420	ITW	C08-C07	2.35	1.43	1.37
3	A	420	ITW	C08-C07	2.34	1.43	1.37
3	A	420	ITW	C13-C12	2.33	1.44	1.38
2	B	419	FDA	C5A-C4A	2.32	1.47	1.40
2	A	419	FDA	C5A-C4A	2.24	1.46	1.40
3	B	420	ITW	C05-C04	2.19	1.37	1.32
3	A	420	ITW	C05-C04	2.17	1.37	1.32
3	A	420	ITW	O03-C02	2.16	1.28	1.22
2	A	419	FDA	C2-N3	-2.11	1.33	1.37

Continued on next page...

Continued from previous page...

Mol	Chain	Res	Type	Atoms	Z	Observed(Å)	Ideal(Å)
2	B	419	FDA	C2-N3	-2.03	1.34	1.37

All (25) bond angle outliers are listed below:

Mol	Chain	Res	Type	Atoms	Z	Observed(°)	Ideal(°)
3	A	420	ITW	C06-C04-C02	13.42	125.59	115.78
3	B	420	ITW	C06-C04-C02	13.35	125.54	115.78
3	A	420	ITW	C06-C04-C05	-6.93	117.31	123.19
3	B	420	ITW	C06-C04-C05	-6.85	117.38	123.19
3	A	420	ITW	O01-C02-C04	4.93	120.44	115.05
3	B	420	ITW	C05-C04-C02	-3.97	117.07	120.61
3	A	420	ITW	C05-C04-C02	-3.95	117.09	120.61
2	A	419	FDA	N3A-C2A-N1A	-3.75	122.82	128.68
3	B	420	ITW	C06-C07-C15	3.74	133.84	126.50
3	A	420	ITW	C06-C07-C15	3.74	133.83	126.50
2	B	419	FDA	N3A-C2A-N1A	-3.70	122.90	128.68
3	B	420	ITW	O01-C02-C04	3.64	119.03	115.05
2	B	419	FDA	N3-C2-N1	3.36	121.21	115.80
2	A	419	FDA	N3-C2-N1	3.29	121.09	115.80
2	A	419	FDA	O4-C4-C4X	-3.27	119.75	127.24
2	B	419	FDA	O4-C4-C4X	-3.21	119.87	127.24
3	B	420	ITW	C07-C06-C04	3.20	120.38	113.99
3	A	420	ITW	O03-C02-C04	-3.08	118.73	121.61
3	A	420	ITW	C07-C06-C04	3.07	120.12	113.99
2	B	419	FDA	P-O3P-PA	-2.85	123.05	132.83
2	A	419	FDA	P-O3P-PA	-2.70	123.57	132.83
2	B	419	FDA	C4A-C5A-N7A	-2.38	106.92	109.40
2	A	419	FDA	C1'-N10-C9A	2.37	124.46	120.51
2	A	419	FDA	C4A-C5A-N7A	-2.33	106.97	109.40
2	B	419	FDA	C1'-N10-C9A	2.23	124.23	120.51

There are no chirality outliers.

All (10) torsion outliers are listed below:

Mol	Chain	Res	Type	Atoms
4	B	421	GOL	O1-C1-C2-C3
4	B	421	GOL	C1-C2-C3-O3
4	B	421	GOL	O1-C1-C2-O2
2	B	419	FDA	O3'-C3'-C4'-C5'
2	B	419	FDA	C2'-C3'-C4'-O4'
4	B	421	GOL	O2-C2-C3-O3
2	B	419	FDA	C2'-C3'-C4'-C5'

Continued on next page...

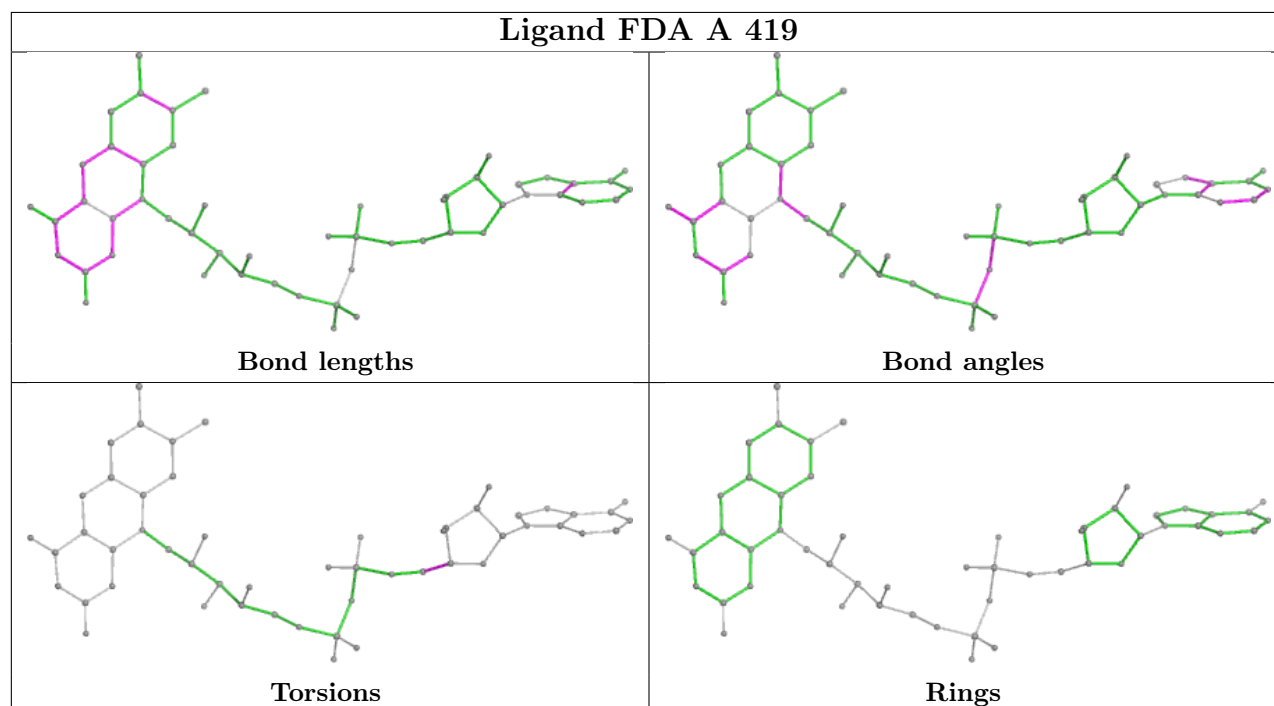
Continued from previous page...

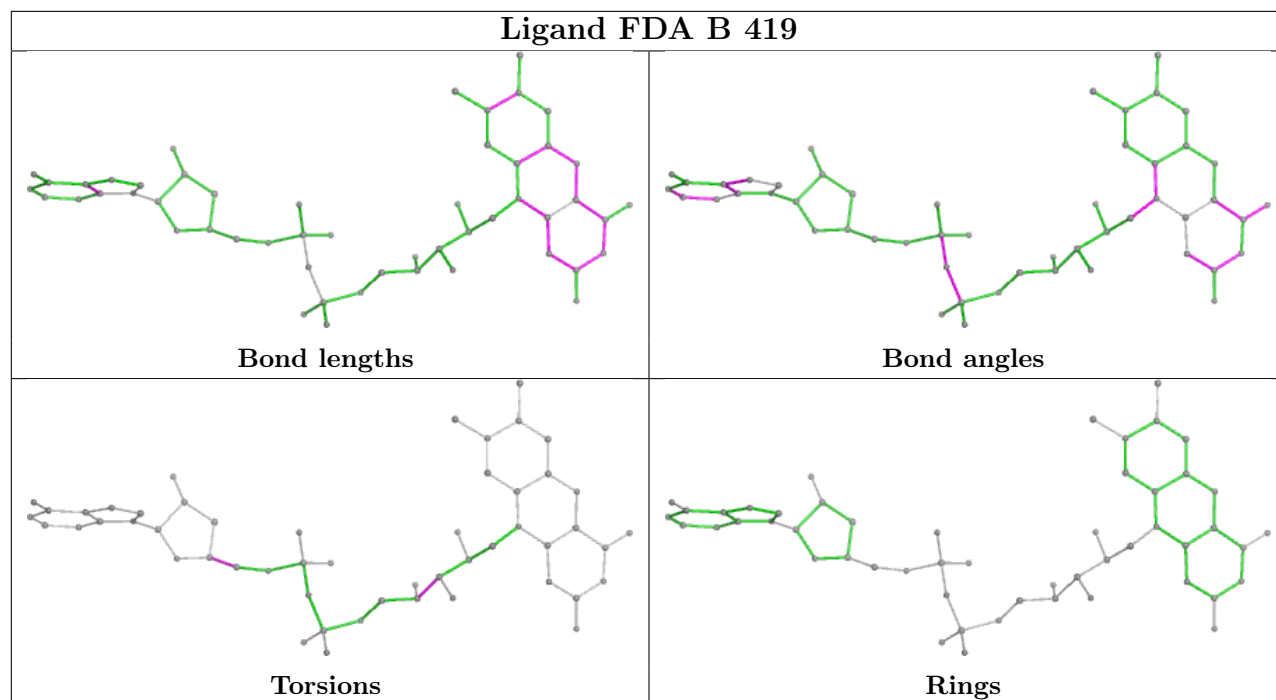
Mol	Chain	Res	Type	Atoms
2	B	419	FDA	O3'-C3'-C4'-O4'
2	A	419	FDA	O4B-C4B-C5B-O5B
2	B	419	FDA	O4B-C4B-C5B-O5B

There are no ring outliers.

No monomer is involved in short contacts.

The following is a two-dimensional graphical depiction of Mogul quality analysis of bond lengths, bond angles, torsion angles, and ring geometry for all instances of the Ligand of Interest. In addition, ligands with molecular weight > 250 and outliers as shown on the validation Tables will also be included. For torsion angles, if less than 5% of the Mogul distribution of torsion angles is within 10 degrees of the torsion angle in question, then that torsion angle is considered an outlier. Any bond that is central to one or more torsion angles identified as an outlier by Mogul will be highlighted in the graph. For rings, the root-mean-square deviation (RMSD) between the ring in question and similar rings identified by Mogul is calculated over all ring torsion angles. If the average RMSD is greater than 60 degrees and the minimal RMSD between the ring in question and any Mogul-identified rings is also greater than 60 degrees, then that ring is considered an outlier. The outliers are highlighted in purple. The color gray indicates Mogul did not find sufficient equivalents in the CSD to analyse the geometry.





5.7 Other polymers [i](#)

There are no such residues in this entry.

5.8 Polymer linkage issues [i](#)

There are no chain breaks in this entry.

6 Fit of model and data [i](#)

6.1 Protein, DNA and RNA chains [i](#)

In the following table, the column labelled ‘#RSRZ> 2’ contains the number (and percentage) of RSRZ outliers, followed by percent RSRZ outliers for the chain as percentile scores relative to all X-ray entries and entries of similar resolution. The OWAB column contains the minimum, median, 95th percentile and maximum values of the occupancy-weighted average B-factor per residue. The column labelled ‘Q< 0.9’ lists the number of (and percentage) of residues with an average occupancy less than 0.9.

Mol	Chain	Analysed	<RSRZ>	#RSRZ>2	OWAB(Å ²)	Q<0.9
1	A	411/423 (97%)	-0.35	8 (1%) 66 65	16, 28, 57, 86	0
1	B	411/423 (97%)	-0.18	7 (1%) 69 68	19, 34, 60, 90	0
All	All	822/846 (97%)	-0.27	15 (1%) 67 66	16, 31, 59, 90	0

All (15) RSRZ outliers are listed below:

Mol	Chain	Res	Type	RSRZ
1	A	94	PHE	7.1
1	A	373	HIS	4.7
1	B	373	HIS	4.6
1	B	418	ALA	4.0
1	B	55	LYS	3.4
1	A	418	ALA	3.4
1	A	368	ASP	3.1
1	A	55	LYS	2.8
1	B	3	GLN	2.6
1	B	53	ASP	2.4
1	B	368	ASP	2.4
1	B	114	LYS	2.3
1	A	374	PRO	2.3
1	A	3	GLN	2.2
1	A	93	LYS	2.1

6.2 Non-standard residues in protein, DNA, RNA chains [i](#)

In the following table, the Atoms column lists the number of modelled atoms in the group and the number defined in the chemical component dictionary. The B-factors column lists the minimum, median, 95th percentile and maximum values of B factors of atoms in the group. The column labelled ‘Q< 0.9’ lists the number of atoms with occupancy less than 0.9.

Mol	Type	Chain	Res	Atoms	RSCC	RSR	B-factors(\AA^2)	Q<0.9
1	CSS	A	321	7/8	0.88	0.12	26,31,88,105	0
1	CSS	B	321	7/8	0.89	0.11	33,45,56,68	0

6.3 Carbohydrates [i](#)

There are no monosaccharides in this entry.

6.4 Ligands [i](#)

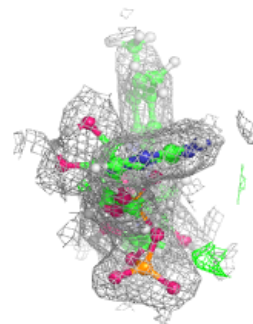
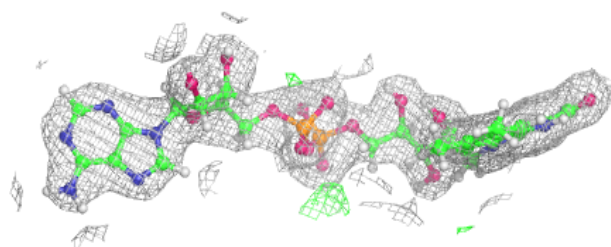
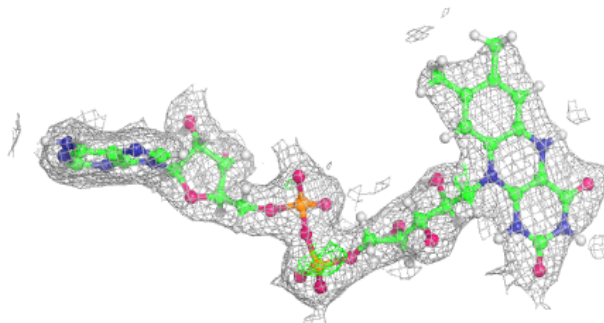
In the following table, the Atoms column lists the number of modelled atoms in the group and the number defined in the chemical component dictionary. The B-factors column lists the minimum, median, 95th percentile and maximum values of B factors of atoms in the group. The column labelled 'Q< 0.9' lists the number of atoms with occupancy less than 0.9.

Mol	Type	Chain	Res	Atoms	RSCC	RSR	B-factors(\AA^2)	Q<0.9
4	GOL	B	421	6/6	0.93	0.11	31,40,49,49	0
3	ITW	B	420	15/15	0.95	0.07	23,28,38,39	0
3	ITW	A	420	15/15	0.96	0.07	19,24,32,33	0
2	FDA	B	419	53/53	0.97	0.07	13,25,32,35	0
2	FDA	A	419	53/53	0.98	0.06	11,17,24,25	0

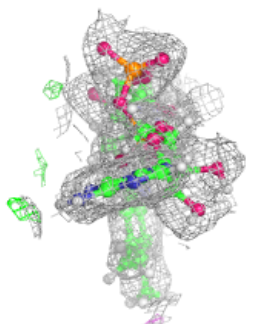
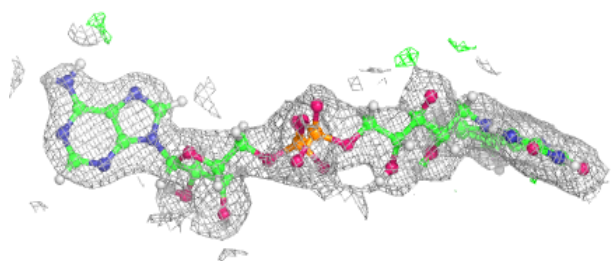
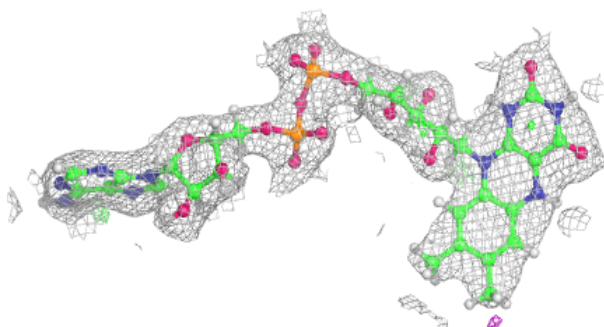
The following is a graphical depiction of the model fit to experimental electron density of all instances of the Ligand of Interest. In addition, ligands with molecular weight > 250 and outliers as shown on the geometry validation Tables will also be included. Each fit is shown from different orientation to approximate a three-dimensional view.

Electron density around FDA B 419:

$2mF_o-DF_c$ (at 0.7 rmsd) in gray
 mF_o-DF_c (at 3 rmsd) in purple (negative)
and green (positive)

**Electron density around FDA A 419:**

$2mF_o-DF_c$ (at 0.7 rmsd) in gray
 mF_o-DF_c (at 3 rmsd) in purple (negative)
and green (positive)



6.5 Other polymers [i](#)

There are no such residues in this entry.