



## wwPDB EM Validation Summary Report ⓘ

Jun 8, 2025 – 04:22 pm BST

PDB ID : 9G24 / pdb\_00009g24  
EMDB ID : EMD-50963  
Title : Yeast RNA polymerase I elongation complex stalled by an apurinic site bound to nucleotide analog AMPCPP at E-site  
Authors : Santos-Aledo, A.; Plaza-Pegueroles, A.; Ruiz, F.M.; Fernandez-Tornero, C.  
Deposited on : 2024-07-10  
Resolution : 3.50 Å(reported)  
Based on initial model : 6hko

This is a wwPDB EM Validation Summary Report for a publicly released PDB entry.

We welcome your comments at [validation@mail.wwpdb.org](mailto:validation@mail.wwpdb.org)

A user guide is available at

<https://www.wwpdb.org/validation/2017/EMValidationReportHelp>  
with specific help available everywhere you see the ⓘ symbol.

The types of validation reports are described at

<http://www.wwpdb.org/validation/2017/FAQs#types>.

---

The following versions of software and data (see [references ⓘ](#)) were used in the production of this report:

EMDB validation analysis : 0.0.1.dev118  
Mogul : 1.8.4, CSD as541be (2020)  
MolProbity : 4-5-2 with Phenix2.0rc1  
buster-report : 1.1.7 (2018)  
Percentile statistics : 20231227.v01 (using entries in the PDB archive December 27th 2023)  
MapQ : 1.9.13  
Ideal geometry (proteins) : Engh & Huber (2001)  
Ideal geometry (DNA, RNA) : Parkinson et al. (1996)  
Validation Pipeline (wwPDB-VP) : 2.43.1

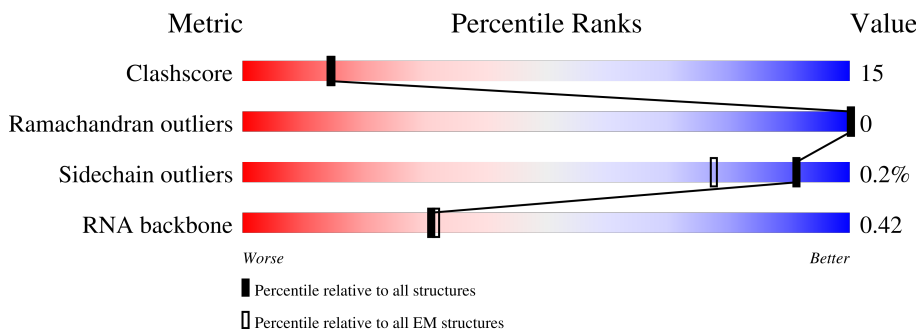
# 1 Overall quality at a glance

The following experimental techniques were used to determine the structure:

*ELECTRON MICROSCOPY*

The reported resolution of this entry is 3.50 Å.

Percentile scores (ranging between 0-100) for global validation metrics of the entry are shown in the following graphic. The table shows the number of entries on which the scores are based.





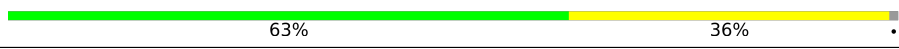
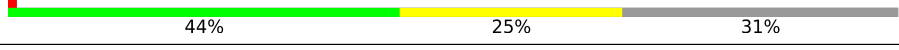
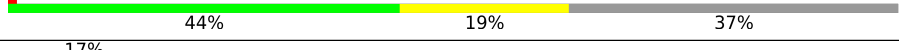


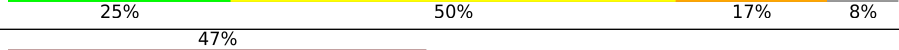
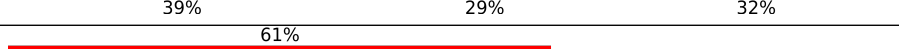
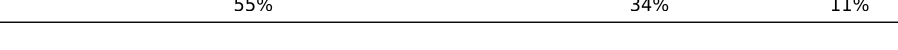
Metric	Whole archive (#Entries)	EM structures (#Entries)
Clashscore	210492	15764
Ramachandran outliers	207382	16835
Sidechain outliers	206894	16415
RNA backbone	6643	2191

The table below summarises the geometric issues observed across the polymeric chains and their fit to the map. The red, orange, yellow and green segments of the bar indicate the fraction of residues that contain outliers for  $\geq 3$ , 2, 1 and 0 types of geometric quality criteria respectively. A grey segment represents the fraction of residues that are not modelled. The numeric value for each fraction is indicated below the corresponding segment, with a dot representing fractions  $\leq 5\%$ . The upper red bar (where present) indicates the fraction of residues that have poor fit to the EM map (all-atom inclusion  $< 40\%$ ). The numeric value is given above the bar.

Mol	Chain	Length	Quality of chain
1	A	1664	
2	B	1203	
3	C	335	
4	D	137	
5	E	215	
6	F	155	
7	G	326	

Continued on next page...

*Continued from previous page...*

Mol	Chain	Length	Quality of chain
8	H	146	
9	I	125	
10	J	70	
11	K	142	
12	L	70	
13	M	415	
14	N	233	
15	R	12	
16	S	38	
17	T	38	

## 2 Entry composition

There are 20 unique types of molecules in this entry. The entry contains 34117 atoms, of which 0 are hydrogens and 0 are deuteriums.

In the tables below, the AltConf column contains the number of residues with at least one atom in alternate conformation and the Trace column contains the number of residues modelled with at most 2 atoms.

- Molecule 1 is a protein called DNA-directed RNA polymerase I subunit RPA190.

Mol	Chain	Residues	Atoms					AltConf	Trace
1	A	1478	Total	C	N	O	S	0	0
			11664	7363	2034	2205	62		

- Molecule 2 is a protein called DNA-directed RNA polymerase I subunit RPA135.

Mol	Chain	Residues	Atoms					AltConf	Trace
2	B	1168	Total	C	N	O	S	0	0
			9274	5862	1629	1732	51		

- Molecule 3 is a protein called DNA-directed RNA polymerases I and III subunit RPAC1.

Mol	Chain	Residues	Atoms					AltConf	Trace
3	C	310	Total	C	N	O	S	0	0
			2461	1560	422	471	8		

- Molecule 4 is a protein called DNA-directed RNA polymerase I subunit RPA14.

Mol	Chain	Residues	Atoms				AltConf	Trace
4	D	59	Total	C	N	O	0	0
			467	293	80	94		

- Molecule 5 is a protein called DNA-directed RNA polymerases I, II, and III subunit RPABC1.

Mol	Chain	Residues	Atoms					AltConf	Trace
5	E	212	Total	C	N	O	S	0	0
			1734	1102	306	315	11		

- Molecule 6 is a protein called DNA-directed RNA polymerases I, II, and III subunit RPABC2.

Mol	Chain	Residues	Atoms					AltConf	Trace
6	F	98	Total	C	N	O	S	0	0
			807	512	142	150	3		

- Molecule 7 is a protein called DNA-directed RNA polymerase I subunit RPA43.

Mol	Chain	Residues	Atoms					AltConf	Trace
7	G	162	Total	C	N	O	S	0	0
			1258	809	212	232	5		

- Molecule 8 is a protein called DNA-directed RNA polymerases I, II, and III subunit RPABC3.

Mol	Chain	Residues	Atoms					AltConf	Trace
8	H	132	Total	C	N	O	S	0	0
			1060	670	177	209	4		

- Molecule 9 is a protein called DNA-directed RNA polymerase I subunit RPA12.

Mol	Chain	Residues	Atoms					AltConf	Trace
9	I	65	Total	C	N	O	S	0	0
			479	300	79	96	4		

- Molecule 10 is a protein called DNA-directed RNA polymerases I, II, and III subunit RPABC5.

Mol	Chain	Residues	Atoms					AltConf	Trace
10	J	69	Total	C	N	O	S	0	0
			569	362	101	100	6		

- Molecule 11 is a protein called DNA-directed RNA polymerases I and III subunit RPAC2.

Mol	Chain	Residues	Atoms					AltConf	Trace
11	K	98	Total	C	N	O	S	0	0
			766	481	124	156	5		

- Molecule 12 is a protein called DNA-directed RNA polymerases I, II, and III subunit RPABC4.

Mol	Chain	Residues	Atoms					AltConf	Trace
12	L	44	Total	C	N	O	S	0	0
			352	217	70	61	4		

- Molecule 13 is a protein called DNA-directed RNA polymerase I subunit RPA49.

Mol	Chain	Residues	Atoms				AltConf	Trace
13	M	103	Total	C	N	O	0	0
			816	518	137	161		

- Molecule 14 is a protein called DNA-directed RNA polymerase I subunit RPA34.

Mol	Chain	Residues	Atoms					AltConf	Trace
14	N	116	Total	C	N	O	S	0	0
			921	597	152	168	4		

- Molecule 15 is a RNA chain called RNA.

Mol	Chain	Residues	Atoms					AltConf	Trace
15	R	11	Total	C	N	O	P	0	0
			239	107	47	74	11		

- Molecule 16 is a DNA chain called Non-template DNA.

Mol	Chain	Residues	Atoms					AltConf	Trace
16	S	26	Total	C	N	O	P	0	0
			526	252	87	161	26		

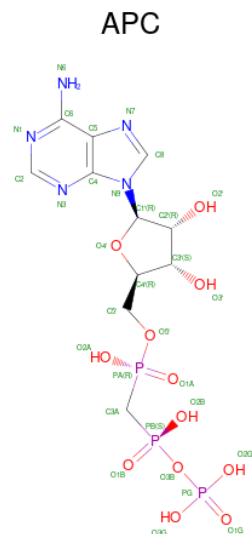
- Molecule 17 is a DNA chain called Template DNA.

Mol	Chain	Residues	Atoms					AltConf	Trace
17	T	34	Total	C	N	O	P	0	0
			686	327	122	203	34		

- Molecule 18 is ZINC ION (CCD ID: ZN) (formula: Zn).

Mol	Chain	Residues	Atoms		AltConf
18	A	2	Total	Zn	0
			2	2	
18	B	1	Total	Zn	0
			1	1	
18	I	1	Total	Zn	0
			1	1	
18	J	1	Total	Zn	0
			1	1	
18	L	1	Total	Zn	0
			1	1	

- Molecule 19 is DIPHOSPHOMETHYLPHOSPHONIC ACID ADENOSYL ESTER (CCD ID: APC) (formula: C<sub>11</sub>H<sub>18</sub>N<sub>5</sub>O<sub>12</sub>P<sub>3</sub>) (labeled as "Ligand of Interest" by depositor).



Mol	Chain	Residues	Atoms					AltConf
19	A	1	Total 31	C 11	N 5	O 12	P 3	0

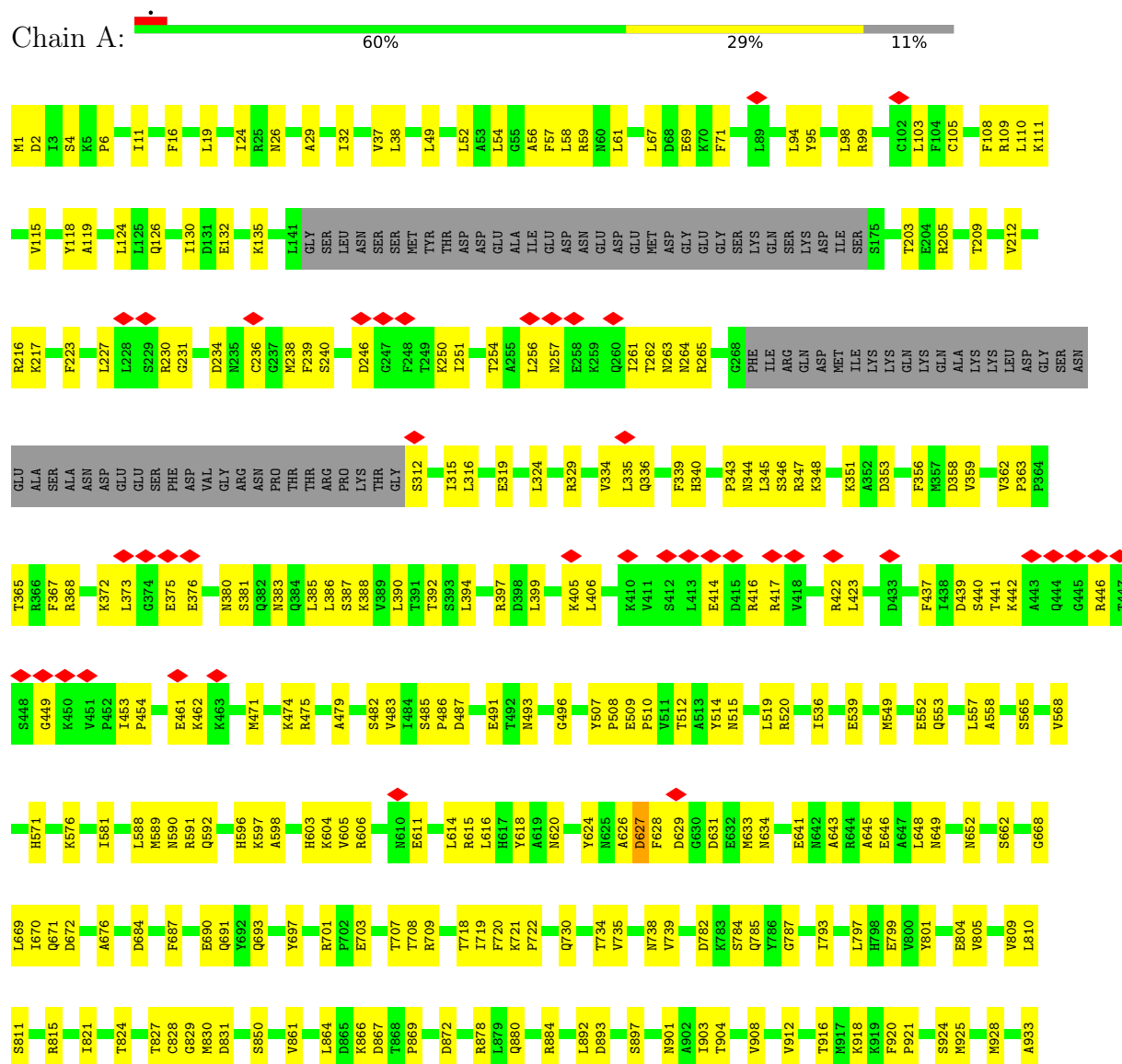
- Molecule 20 is MAGNESIUM ION (CCD ID: MG) (formula: Mg).

Mol	Chain	Residues	Atoms	AltConf
20	A	1	Total Mg 1 1	0

### 3 Residue-property plots

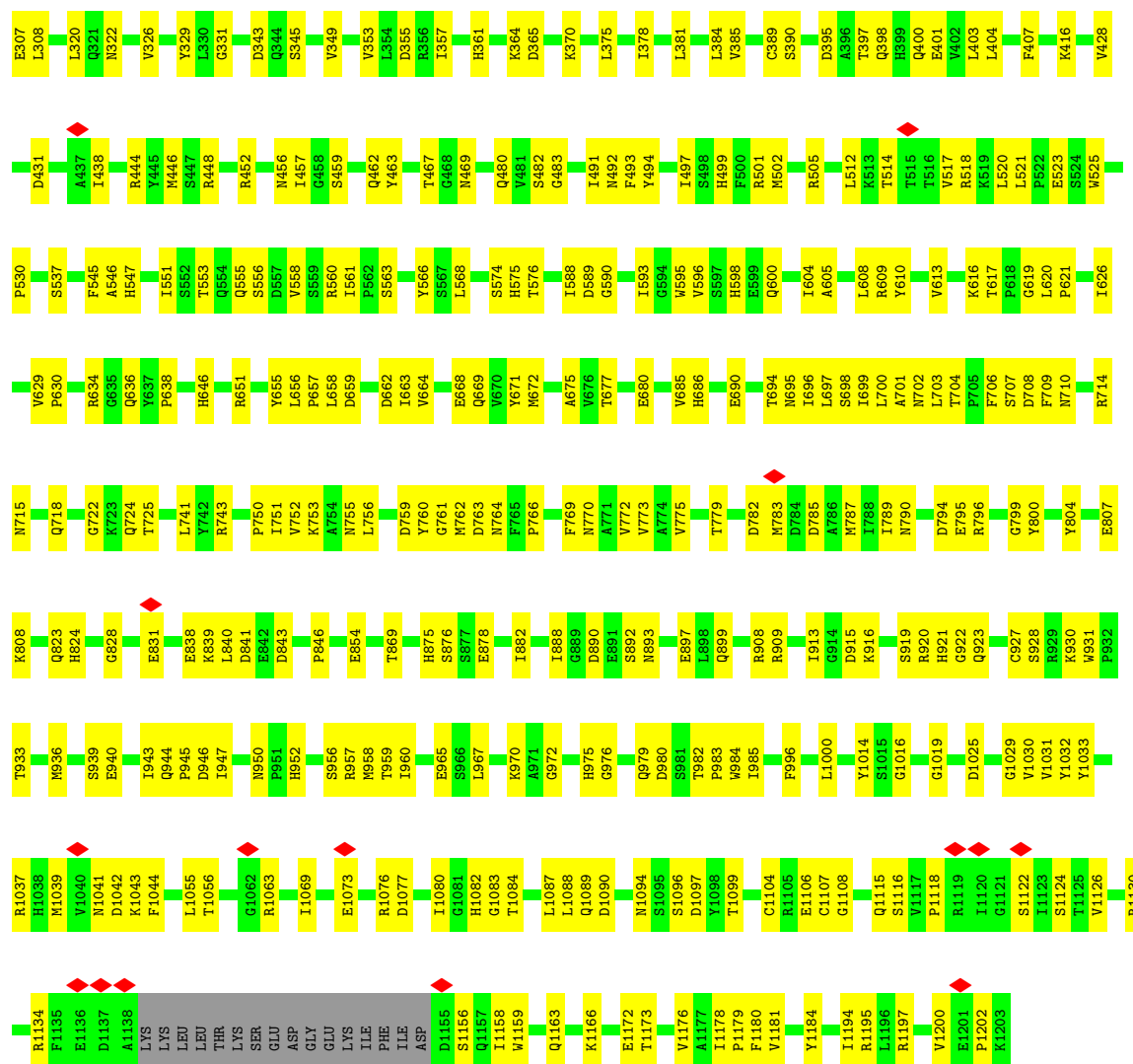
These plots are drawn for all protein, RNA, DNA and oligosaccharide chains in the entry. The first graphic for a chain summarises the proportions of the various outlier classes displayed in the second graphic. The second graphic shows the sequence view annotated by issues in geometry and atom inclusion in map density. Residues are color-coded according to the number of geometric quality criteria for which they contain at least one outlier: green = 0, yellow = 1, orange = 2 and red = 3 or more. A red diamond above a residue indicates a poor fit to the EM map for this residue (all-atom inclusion < 40%). Stretches of 2 or more consecutive residues without any outlier are shown as a green connector. Residues present in the sample, but not in the model, are shown in grey.

- Molecule 1: DNA-directed RNA polymerase I subunit RPA190

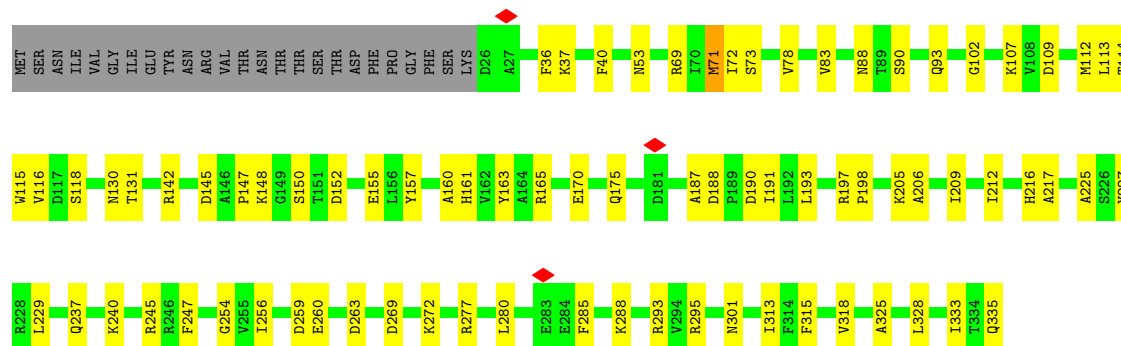






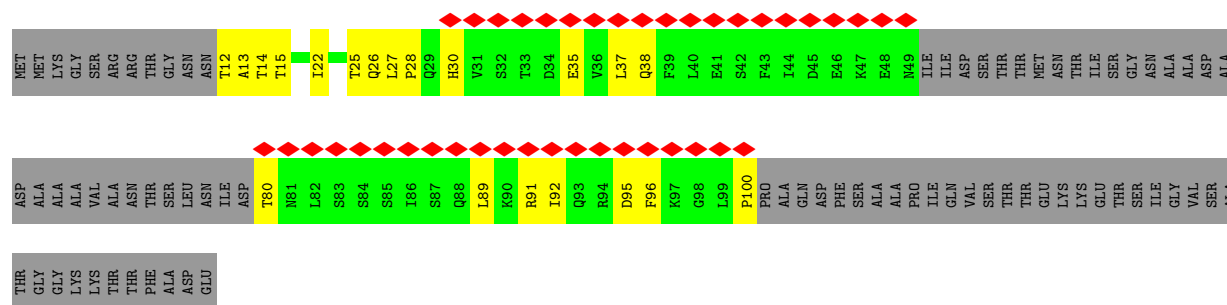


• Molecule 3: DNA-directed RNA polymerases I and III subunit RPAC1

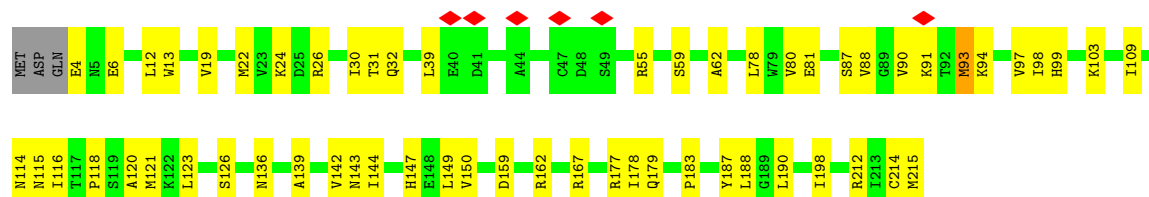


• Molecule 4: DNA-directed RNA polymerase I subunit RPA14

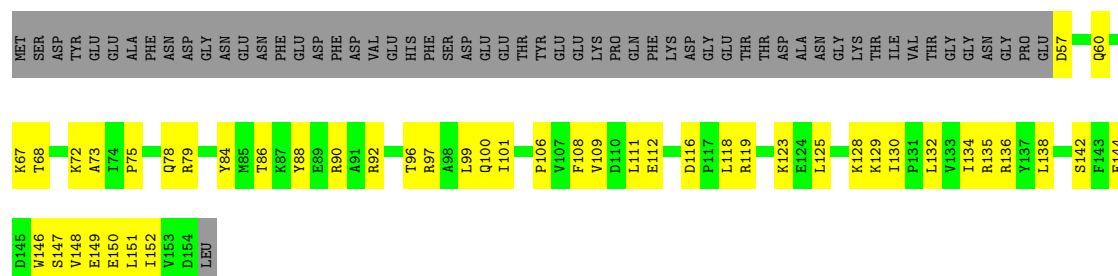




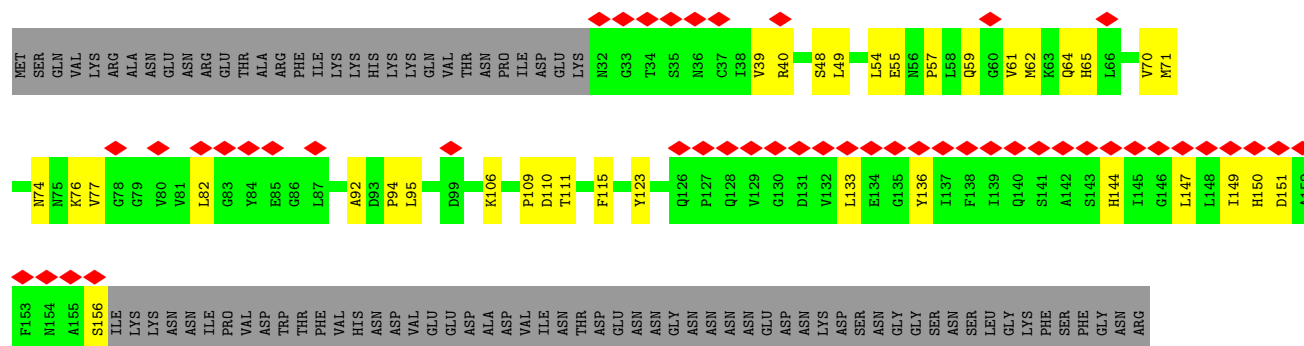
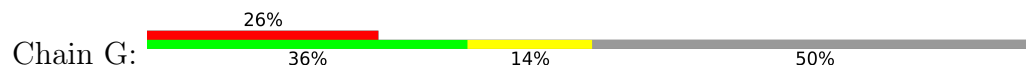
- Molecule 5: DNA-directed RNA polymerases I, II, and III subunit RPABC1

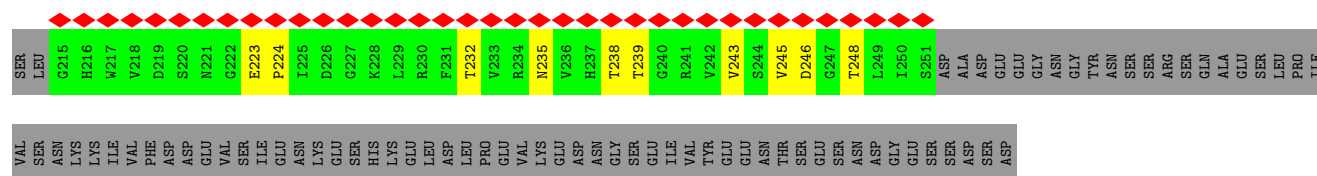


- Molecule 6: DNA-directed RNA polymerases I, II, and III subunit RPABC2



- Molecule 7: DNA-directed RNA polymerase I subunit RPA43

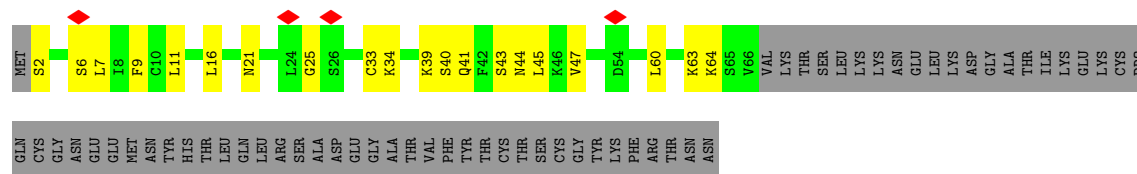
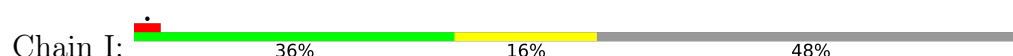




- Molecule 8: DNA-directed RNA polymerases I, II, and III subunit RPABC3



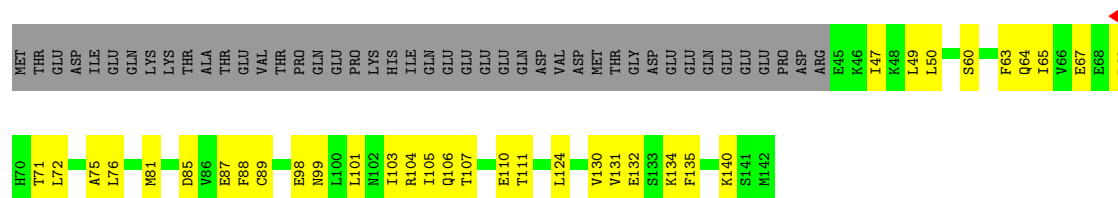
- Molecule 9: DNA-directed RNA polymerase I subunit RPA12



- Molecule 10: DNA-directed RNA polymerases I, II, and III subunit RPABC5



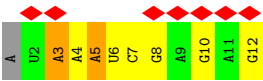
- Molecule 11: DNA-directed RNA polymerases I and III subunit RPAC2



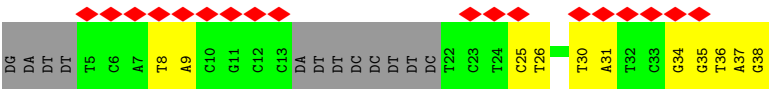
- Molecule 12: DNA-directed RNA polymerases I, II, and III subunit RPABC4







● Molecule 16: Non-template DNA



● Molecule 17: Template DNA



## 4 Experimental information

Property	Value	Source
EM reconstruction method	SINGLE PARTICLE	Depositor
Imposed symmetry	POINT, Not provided	
Number of particles used	141663	Depositor
Resolution determination method	FSC 0.143 CUT-OFF	Depositor
CTF correction method	PHASE FLIPPING ONLY	Depositor
Microscope	FEI TITAN KRIOS	Depositor
Voltage (kV)	300	Depositor
Electron dose ( $e^-/\text{\AA}^2$ )	40.1	Depositor
Minimum defocus (nm)	1000	Depositor
Maximum defocus (nm)	3500	Depositor
Magnification	Not provided	
Image detector	GATAN K2 SUMMIT (4k x 4k)	Depositor
Maximum map value	2.416	Depositor
Minimum map value	-1.291	Depositor
Average map value	0.004	Depositor
Map value standard deviation	0.082	Depositor
Recommended contour level	0.3	Depositor
Map size ( $\text{\AA}$ )	301.536, 301.536, 301.536	wwPDB
Map dimensions	288, 288, 288	wwPDB
Map angles ( $^\circ$ )	90.0, 90.0, 90.0	wwPDB
Pixel spacing ( $\text{\AA}$ )	1.047, 1.047, 1.047	Depositor

## 5 Model quality [i](#)

### 5.1 Standard geometry [i](#)

Bond lengths and bond angles in the following residue types are not validated in this section: ZN, 3DR, APC, MG

The Z score for a bond length (or angle) is the number of standard deviations the observed value is removed from the expected value. A bond length (or angle) with  $|Z| > 5$  is considered an outlier worth inspection. RMSZ is the root-mean-square of all Z scores of the bond lengths (or angles).

Mol	Chain	Bond lengths		Bond angles	
		RMSZ	$\# Z  > 5$	RMSZ	$\# Z  > 5$
1	A	0.15	0/11879	0.33	0/16045
2	B	0.14	0/9480	0.31	0/12816
3	C	0.11	0/2513	0.26	0/3407
4	D	0.19	0/473	0.42	0/641
5	E	0.13	0/1770	0.34	0/2383
6	F	0.17	0/821	0.36	0/1106
7	G	0.11	0/1288	0.30	0/1755
8	H	0.11	0/1078	0.26	0/1460
9	I	0.12	0/485	0.32	0/657
10	J	0.13	0/578	0.27	0/775
11	K	0.16	0/776	0.31	0/1047
12	L	0.10	0/354	0.31	0/468
13	M	1.05	2/832 (0.2%)	1.17	5/1116 (0.4%)
14	N	0.09	0/938	0.22	0/1258
15	R	0.08	0/268	0.17	0/416
16	S	0.16	0/585	0.37	0/897
17	T	0.20	0/755	0.38	0/1160
All	All	0.21	2/34873 (0.0%)	0.36	5/47407 (0.0%)

Chiral center outliers are detected by calculating the chiral volume of a chiral center and verifying if the center is modelled as a planar moiety or with the opposite hand. A planarity outlier is detected by checking planarity of atoms in a peptide group, atoms in a mainchain group or atoms of a sidechain that are expected to be planar.

Mol	Chain	#Chirality outliers	#Planarity outliers
1	A	0	1

All (2) bond length outliers are listed below:

Mol	Chain	Res	Type	Atoms	Z	Observed(Å)	Ideal(Å)
13	M	94	PRO	CB-CG	22.06	2.60	1.49

*Continued on next page...*



*Continued from previous page...*

Mol	Chain	Res	Type	Atoms	Z	Observed(Å)	Ideal(Å)
13	M	94	PRO	CG-CD	-19.35	0.84	1.50

All (5) bond angle outliers are listed below:

Mol	Chain	Res	Type	Atoms	Z	Observed(°)	Ideal(°)
13	M	94	PRO	CB-CG-CD	-33.15	0.03	106.10
13	M	94	PRO	CA-N-CD	-11.57	95.80	112.00
13	M	94	PRO	CA-CB-CG	-10.48	84.59	104.50
13	M	94	PRO	N-CA-CB	-8.06	96.27	103.36
13	M	93	ALA	C-N-CD	5.30	146.72	125.00

There are no chirality outliers.

All (1) planarity outliers are listed below:

Mol	Chain	Res	Type	Group
1	A	627	ASP	Peptide

## 5.2 Too-close contacts [i](#)

In the following table, the Non-H and H(model) columns list the number of non-hydrogen atoms and hydrogen atoms in the chain respectively. The H(added) column lists the number of hydrogen atoms added and optimized by MolProbity. The Clashes column lists the number of clashes within the asymmetric unit, whereas Symm-Clashes lists symmetry-related clashes.

Mol	Chain	Non-H	H(model)	H(added)	Clashes	Symm-Clashes
1	A	11664	0	11740	407	0
2	B	9274	0	9160	318	0
3	C	2461	0	2439	62	0
4	D	467	0	468	16	0
5	E	1734	0	1764	49	0
6	F	807	0	827	44	0
7	G	1258	0	1255	38	0
8	H	1060	0	1032	33	0
9	I	479	0	480	16	0
10	J	569	0	585	22	0
11	K	766	0	765	36	0
12	L	352	0	373	12	0
13	M	816	0	816	50	0
14	N	921	0	956	33	0
15	R	239	0	120	10	0
16	S	526	0	297	10	0

*Continued on next page...*

*Continued from previous page...*

Mol	Chain	Non-H	H(model)	H(added)	Clashes	Symm-Clashes
17	T	686	0	381	9	0
18	A	2	0	0	0	0
18	B	1	0	0	0	0
18	I	1	0	0	0	0
18	J	1	0	0	0	0
18	L	1	0	0	0	0
19	A	31	0	13	0	0
20	A	1	0	0	0	0
All	All	34117	0	33471	1022	0

The all-atom clashscore is defined as the number of clashes found per 1000 atoms (including hydrogen atoms). The all-atom clashscore for this structure is 15.

The worst 5 of 1022 close contacts within the same asymmetric unit are listed below, sorted by their clash magnitude.

Atom-1	Atom-2	Interatomic distance (Å)	Clash overlap (Å)
13:M:94:PRO:CG	13:M:94:PRO:N	1.84	1.33
13:M:94:PRO:CD	13:M:94:PRO:HG3	1.62	1.12
13:M:94:PRO:CD	13:M:94:PRO:HG2	1.62	1.07
13:M:94:PRO:CG	13:M:94:PRO:HD2	1.52	1.02
13:M:94:PRO:CG	13:M:94:PRO:HD3	1.52	1.02

There are no symmetry-related clashes.

## 5.3 Torsion angles [i](#)

### 5.3.1 Protein backbone [i](#)

In the following table, the Percentiles column shows the percent Ramachandran outliers of the chain as a percentile score with respect to all PDB entries followed by that with respect to all EM entries.

The Analysed column shows the number of residues for which the backbone conformation was analysed, and the total number of residues.

Mol	Chain	Analysed	Favoured	Allowed	Outliers	Percentiles	
1	A	1466/1664 (88%)	1376 (94%)	90 (6%)	0	100	100
2	B	1162/1203 (97%)	1091 (94%)	71 (6%)	0	100	100
3	C	308/335 (92%)	297 (96%)	11 (4%)	0	100	100

*Continued on next page...*

*Continued from previous page...*

Mol	Chain	Analysed	Favoured	Allowed	Outliers	Percentiles	
4	D	55/137 (40%)	46 (84%)	9 (16%)	0	100	100
5	E	210/215 (98%)	197 (94%)	13 (6%)	0	100	100
6	F	96/155 (62%)	93 (97%)	3 (3%)	0	100	100
7	G	158/326 (48%)	152 (96%)	6 (4%)	0	100	100
8	H	128/146 (88%)	122 (95%)	6 (5%)	0	100	100
9	I	63/125 (50%)	57 (90%)	6 (10%)	0	100	100
10	J	67/70 (96%)	63 (94%)	4 (6%)	0	100	100
11	K	96/142 (68%)	90 (94%)	6 (6%)	0	100	100
12	L	42/70 (60%)	41 (98%)	1 (2%)	0	100	100
13	M	101/415 (24%)	95 (94%)	6 (6%)	0	100	100
14	N	106/233 (46%)	101 (95%)	5 (5%)	0	100	100
All	All	4058/5236 (78%)	3821 (94%)	237 (6%)	0	100	100

There are no Ramachandran outliers to report.

### 5.3.2 Protein sidechains ⓘ

In the following table, the Percentiles column shows the percent sidechain outliers of the chain as a percentile score with respect to all PDB entries followed by that with respect to all EM entries.

The Analysed column shows the number of residues for which the sidechain conformation was analysed, and the total number of residues.

Mol	Chain	Analysed	Rotameric	Outliers	Percentiles	
1	A	1301/1465 (89%)	1297 (100%)	4 (0%)	91	96
2	B	1020/1053 (97%)	1019 (100%)	1 (0%)	92	97
3	C	273/296 (92%)	270 (99%)	3 (1%)	70	83
4	D	56/116 (48%)	56 (100%)	0	100	100
5	E	194/197 (98%)	193 (100%)	1 (0%)	86	93
6	F	88/137 (64%)	88 (100%)	0	100	100
7	G	141/291 (48%)	141 (100%)	0	100	100
8	H	116/128 (91%)	116 (100%)	0	100	100
9	I	57/110 (52%)	57 (100%)	0	100	100
10	J	64/65 (98%)	64 (100%)	0	100	100

*Continued on next page...*

*Continued from previous page...*

Mol	Chain	Analysed	Rotameric	Outliers	Percentiles	
11	K	88/130 (68%)	88 (100%)	0	100	100
12	L	39/57 (68%)	39 (100%)	0	100	100
13	M	93/371 (25%)	93 (100%)	0	100	100
14	N	107/220 (49%)	107 (100%)	0	100	100
All	All	3637/4636 (78%)	3628 (100%)	9 (0%)	91	97

5 of 9 residues with a non-rotameric sidechain are listed below:

Mol	Chain	Res	Type
3	C	114	THR
5	E	93	MET
1	A	1647	ASN
2	B	187	SER
3	C	71	MET

Sometimes sidechains can be flipped to improve hydrogen bonding and reduce clashes. 5 of 74 such sidechains are listed below:

Mol	Chain	Res	Type
3	C	301	ASN
13	M	57	ASN
5	E	32	GLN
8	H	137	GLN
1	A	1250	GLN

### 5.3.3 RNA ⓘ

Mol	Chain	Analysed	Backbone Outliers	Pucker Outliers
15	R	10/12 (83%)	3 (30%)	0

All (3) RNA backbone outliers are listed below:

Mol	Chain	Res	Type
15	R	3	A
15	R	5	A
15	R	10	G

There are no RNA pucker outliers to report.

## 5.4 Non-standard residues in protein, DNA, RNA chains ⓘ

1 non-standard protein/DNA/RNA residue is modelled in this entry.

In the following table, the Counts columns list the number of bonds (or angles) for which Mogul statistics could be retrieved, the number of bonds (or angles) that are observed in the model and the number of bonds (or angles) that are defined in the Chemical Component Dictionary. The Link column lists molecule types, if any, to which the group is linked. The Z score for a bond length (or angle) is the number of standard deviations the observed value is removed from the expected value. A bond length (or angle) with  $|Z| > 2$  is considered an outlier worth inspection. RMSZ is the root-mean-square of all Z scores of the bond lengths (or angles).

Mol	Type	Chain	Res	Link	Bond lengths			Bond angles		
					Counts	RMSZ	$\# Z  > 2$	Counts	RMSZ	$\# Z  > 2$
17	3DR	T	17	17	8,11,12	1.54	1 (12%)	9,14,17	1.67	2 (22%)

In the following table, the Chirals column lists the number of chiral outliers, the number of chiral centers analysed, the number of these observed in the model and the number defined in the Chemical Component Dictionary. Similar counts are reported in the Torsion and Rings columns. '-' means no outliers of that kind were identified.

Mol	Type	Chain	Res	Link	Chirals	Torsions	Rings
17	3DR	T	17	17	-	1/3/15/16	0/1/1/1

All (1) bond length outliers are listed below:

Mol	Chain	Res	Type	Atoms	Z	Observed(Å)	Ideal(Å)
17	T	17	3DR	C2'-C1'	2.53	1.58	1.51

All (2) bond angle outliers are listed below:

Mol	Chain	Res	Type	Atoms	Z	Observed(°)	Ideal(°)
17	T	17	3DR	O4'-C4'-C3'	3.60	109.03	103.73
17	T	17	3DR	C2'-C3'-C4'	3.07	109.11	102.75

There are no chirality outliers.

All (1) torsion outliers are listed below:

Mol	Chain	Res	Type	Atoms
17	T	17	3DR	C4'-C5'-O5'-P

There are no ring outliers.

No monomer is involved in short contacts.

## 5.5 Carbohydrates [i](#)

There are no oligosaccharides in this entry.

## 5.6 Ligand geometry [i](#)

Of 8 ligands modelled in this entry, 7 are monoatomic - leaving 1 for Mogul analysis.

In the following table, the Counts columns list the number of bonds (or angles) for which Mogul statistics could be retrieved, the number of bonds (or angles) that are observed in the model and the number of bonds (or angles) that are defined in the Chemical Component Dictionary. The Link column lists molecule types, if any, to which the group is linked. The Z score for a bond length (or angle) is the number of standard deviations the observed value is removed from the expected value. A bond length (or angle) with  $|Z| > 2$  is considered an outlier worth inspection. RMSZ is the root-mean-square of all Z scores of the bond lengths (or angles).

Mol	Type	Chain	Res	Link	Bond lengths			Bond angles		
					Counts	RMSZ	# Z  > 2	Counts	RMSZ	# Z  > 2
19	APC	A	1703	-	27,33,33	4.53	9 (33%)	31,52,52	1.27	3 (9%)

In the following table, the Chirals column lists the number of chiral outliers, the number of chiral centers analysed, the number of these observed in the model and the number defined in the Chemical Component Dictionary. Similar counts are reported in the Torsion and Rings columns. '-' means no outliers of that kind were identified.

Mol	Type	Chain	Res	Link	Chirals	Torsions	Rings
19	APC	A	1703	-	-	3/15/38/38	0/3/3/3

The worst 5 of 9 bond length outliers are listed below:

Mol	Chain	Res	Type	Atoms	Z	Observed(Å)	Ideal(Å)
19	A	1703	APC	O4'-C1'	14.34	1.61	1.41
19	A	1703	APC	C2'-C1'	-12.59	1.34	1.53
19	A	1703	APC	PB-O3B	8.43	1.67	1.58
19	A	1703	APC	O4'-C4'	-6.44	1.30	1.45
19	A	1703	APC	PA-O5'	5.84	1.66	1.57

All (3) bond angle outliers are listed below:

Mol	Chain	Res	Type	Atoms	Z	Observed(°)	Ideal(°)
19	A	1703	APC	N3-C2-N1	-4.56	121.56	128.68
19	A	1703	APC	PB-O3B-PG	-2.67	123.20	132.62
19	A	1703	APC	C4-C5-N7	-2.20	107.11	109.40

There are no chirality outliers.

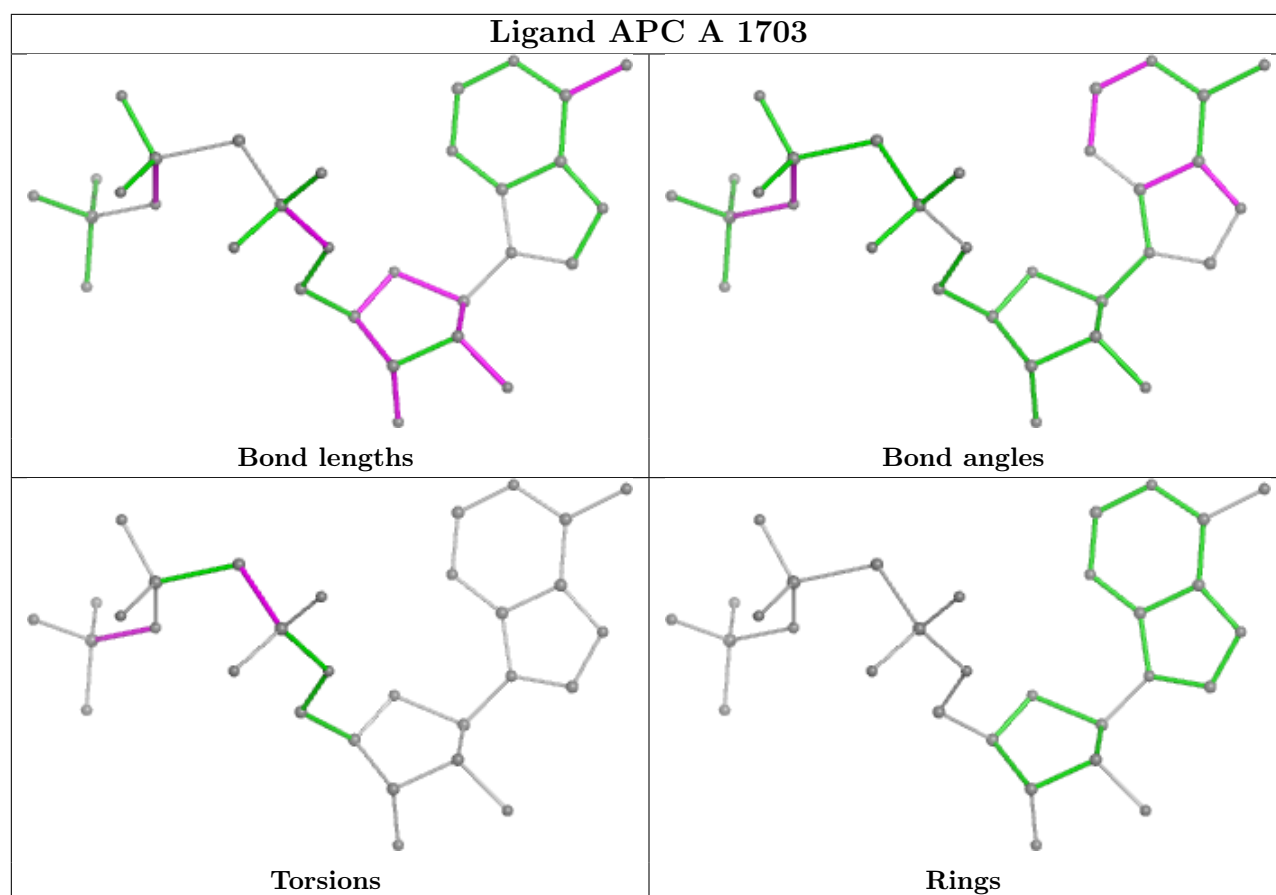
All (3) torsion outliers are listed below:

Mol	Chain	Res	Type	Atoms
19	A	1703	APC	PB-O3B-PG-O3G
19	A	1703	APC	PB-C3A-PA-O1A
19	A	1703	APC	PB-C3A-PA-O2A

There are no ring outliers.

No monomer is involved in short contacts.

The following is a two-dimensional graphical depiction of Mogul quality analysis of bond lengths, bond angles, torsion angles, and ring geometry for all instances of the Ligand of Interest. In addition, ligands with molecular weight > 250 and outliers as shown on the validation Tables will also be included. For torsion angles, if less than 5% of the Mogul distribution of torsion angles is within 10 degrees of the torsion angle in question, then that torsion angle is considered an outlier. Any bond that is central to one or more torsion angles identified as an outlier by Mogul will be highlighted in the graph. For rings, the root-mean-square deviation (RMSD) between the ring in question and similar rings identified by Mogul is calculated over all ring torsion angles. If the average RMSD is greater than 60 degrees and the minimal RMSD between the ring in question and any Mogul-identified rings is also greater than 60 degrees, then that ring is considered an outlier. The outliers are highlighted in purple. The color gray indicates Mogul did not find sufficient equivalents in the CSD to analyse the geometry.



## 5.7 Other polymers [i](#)

There are no such residues in this entry.

## 5.8 Polymer linkage issues [i](#)

There are no chain breaks in this entry.



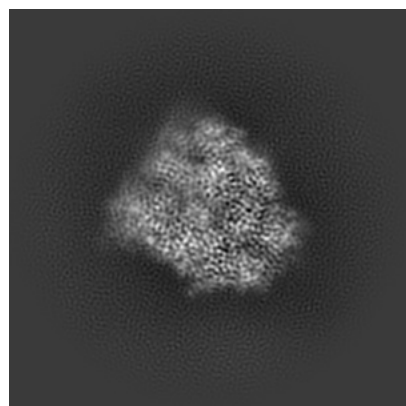
## 6 Map visualisation [i](#)

This section contains visualisations of the EMDB entry EMD-50963. These allow visual inspection of the internal detail of the map and identification of artifacts.

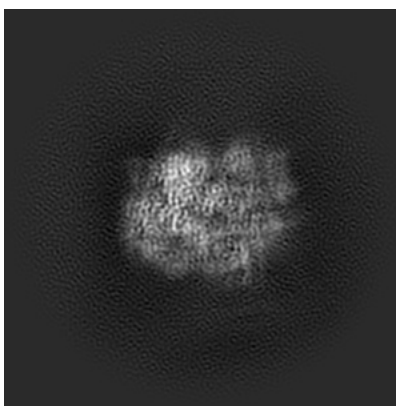
Images derived from a raw map, generated by summing the deposited half-maps, are presented below the corresponding image components of the primary map to allow further visual inspection and comparison with those of the primary map.

### 6.1 Orthogonal projections [i](#)

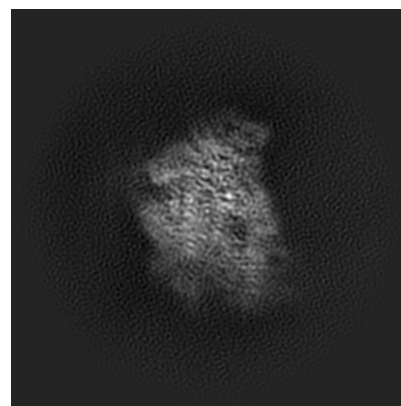
#### 6.1.1 Primary map



X

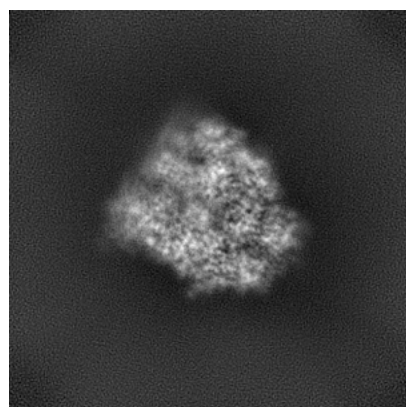


Y

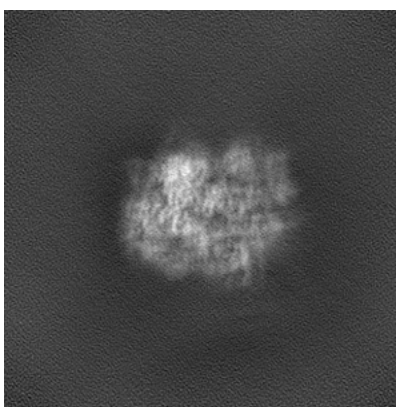


Z

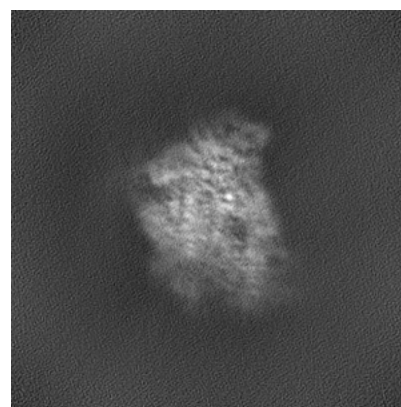
#### 6.1.2 Raw map



X



Y

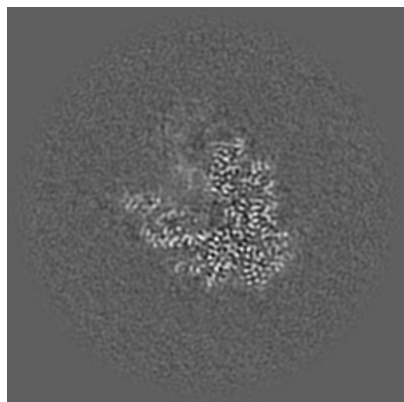


Z

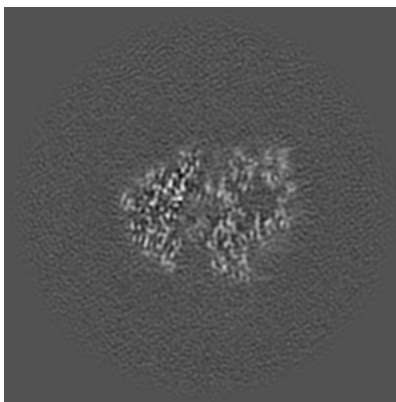
The images above show the map projected in three orthogonal directions.

## 6.2 Central slices [i](#)

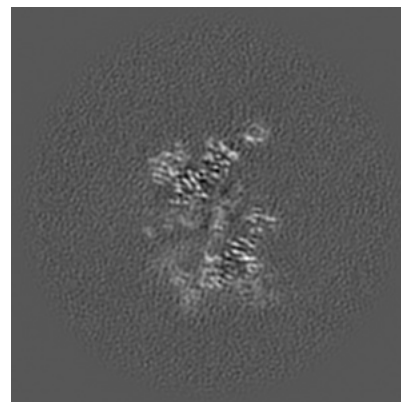
### 6.2.1 Primary map



X Index: 144

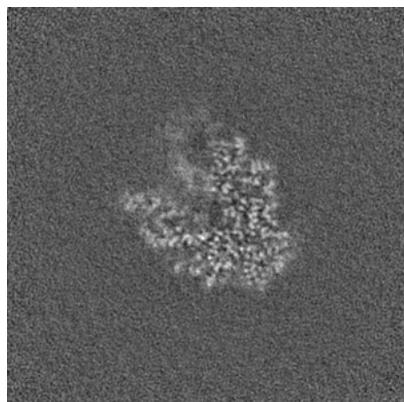


Y Index: 144

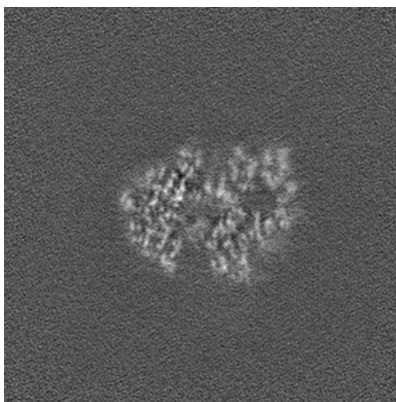


Z Index: 144

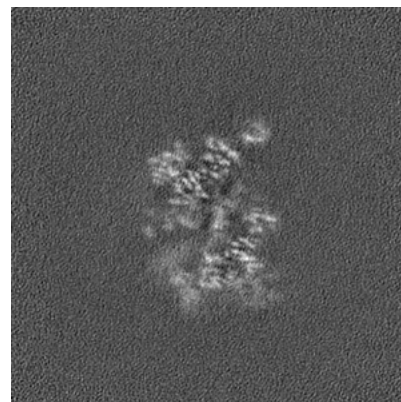
### 6.2.2 Raw map



X Index: 144



Y Index: 144

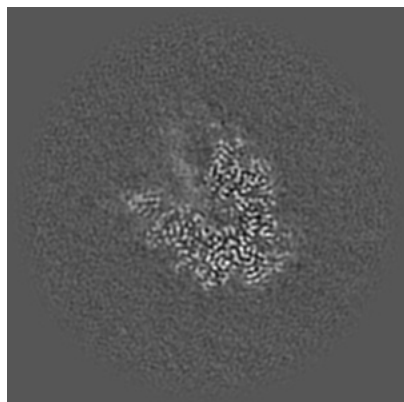


Z Index: 144

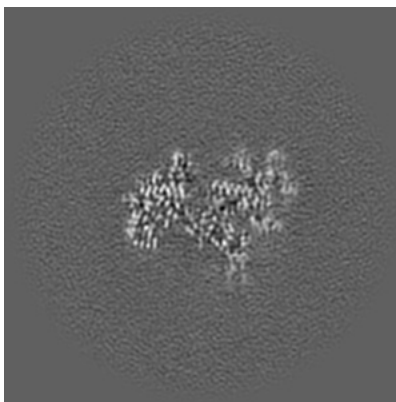
The images above show central slices of the map in three orthogonal directions.

## 6.3 Largest variance slices [i](#)

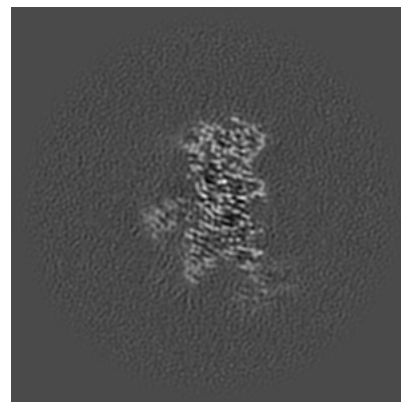
### 6.3.1 Primary map



X Index: 146

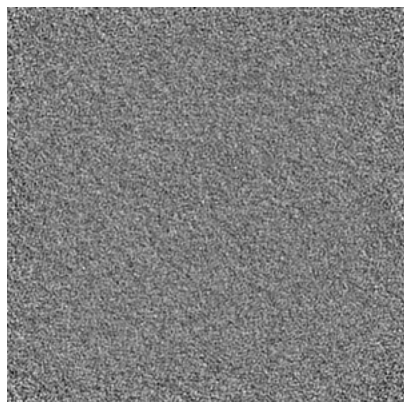


Y Index: 153

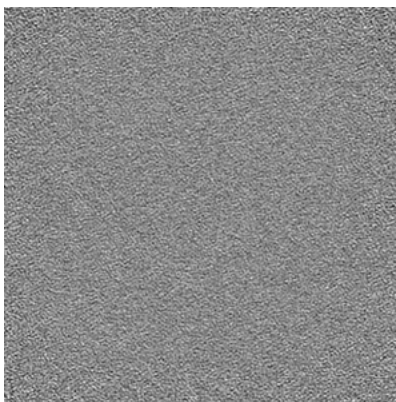


Z Index: 123

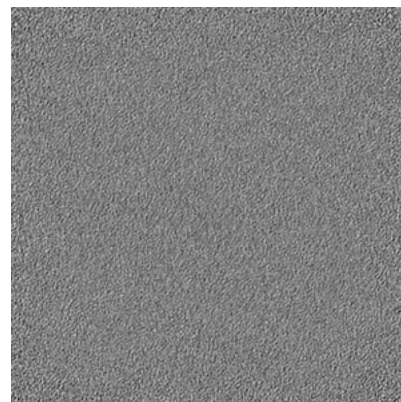
### 6.3.2 Raw map



X Index: 0



Y Index: 0



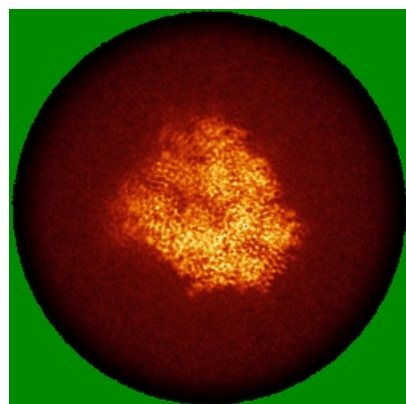
Z Index: 0

The images above show the largest variance slices of the map in three orthogonal directions.

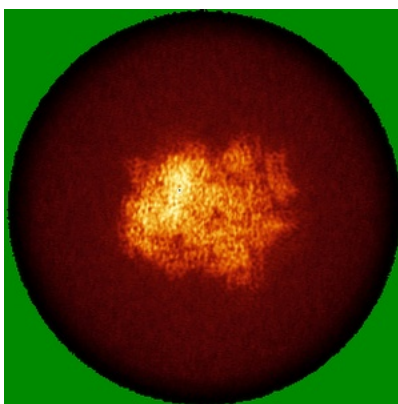


## 6.4 Orthogonal standard-deviation projections (False-color) [i](#)

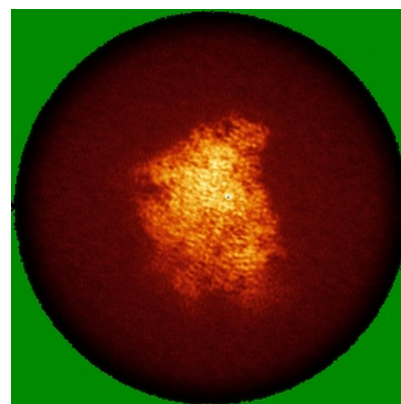
### 6.4.1 Primary map



X

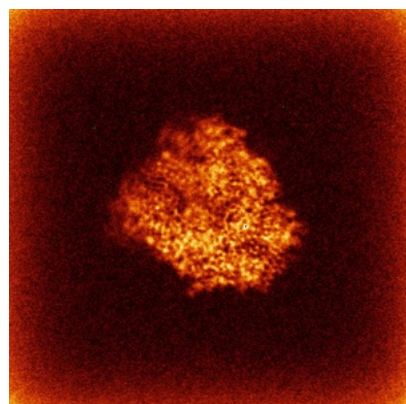


Y

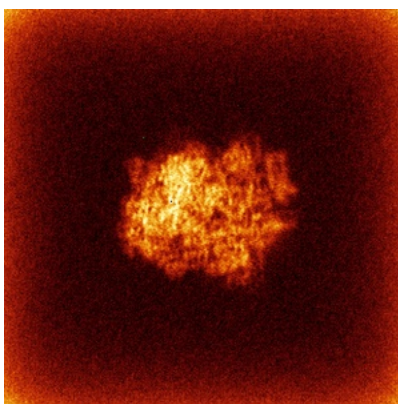


Z

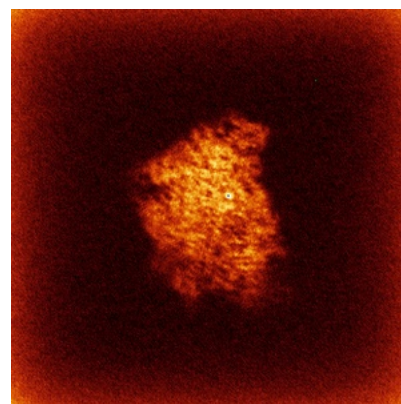
### 6.4.2 Raw map



X



Y

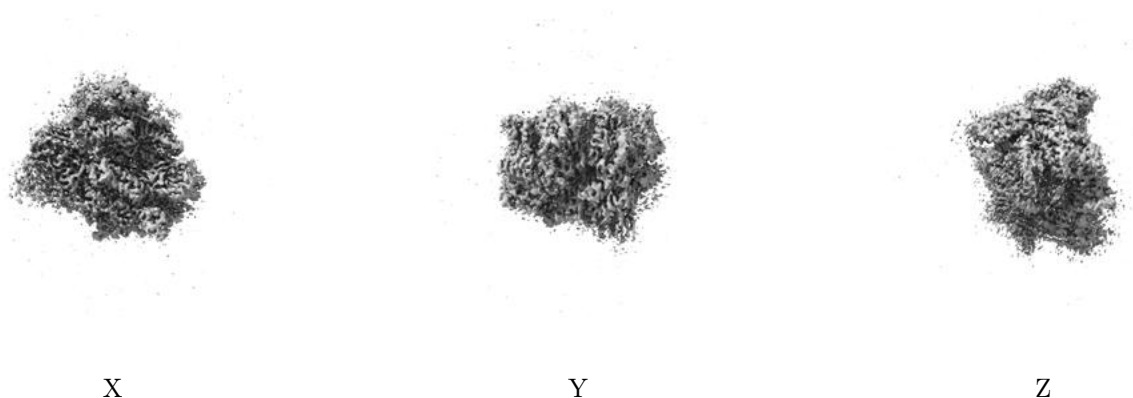


Z

The images above show the map standard deviation projections with false color in three orthogonal directions. Minimum values are shown in green, max in blue, and dark to light orange shades represent small to large values respectively.

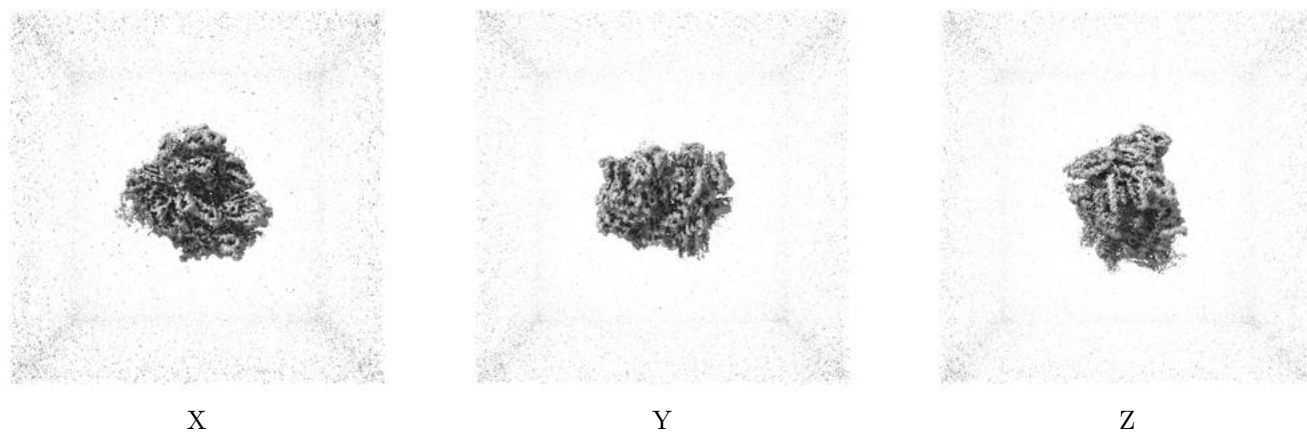
## 6.5 Orthogonal surface views [i](#)

### 6.5.1 Primary map



The images above show the 3D surface view of the map at the recommended contour level 0.3. These images, in conjunction with the slice images, may facilitate assessment of whether an appropriate contour level has been provided.

### 6.5.2 Raw map



These images show the 3D surface of the raw map. The raw map's contour level was selected so that its surface encloses the same volume as the primary map does at its recommended contour level.

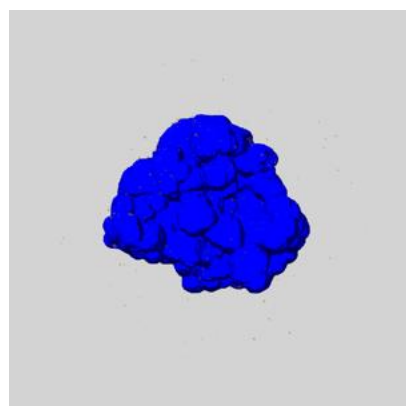
## 6.6 Mask visualisation [i](#)

This section shows the 3D surface view of the primary map at 50% transparency overlaid with the specified mask at 0% transparency

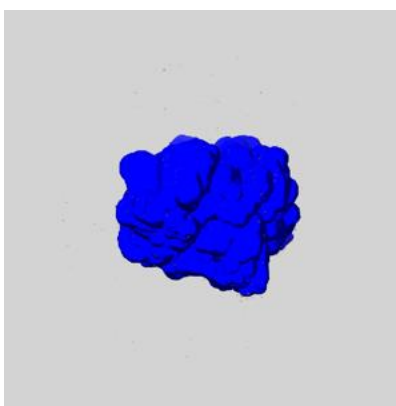
A mask typically either:

- Encompasses the whole structure
- Separates out a domain, a functional unit, a monomer or an area of interest from a larger structure

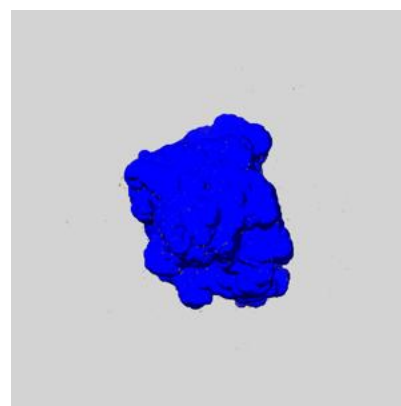
### 6.6.1 emd\_50963\_msk\_1.map [i](#)



X

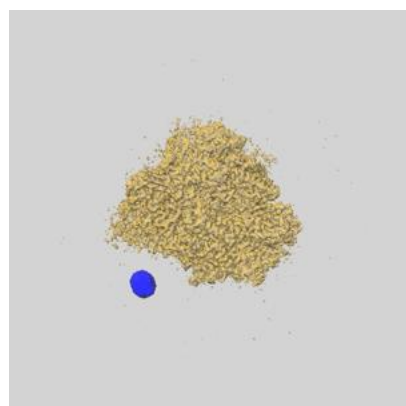


Y

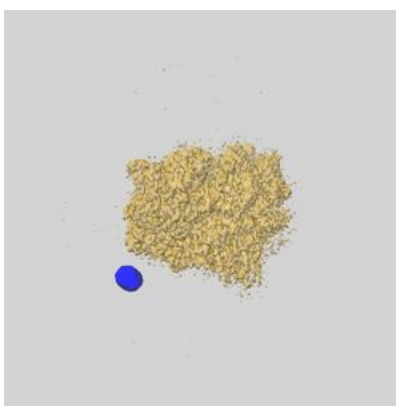


Z

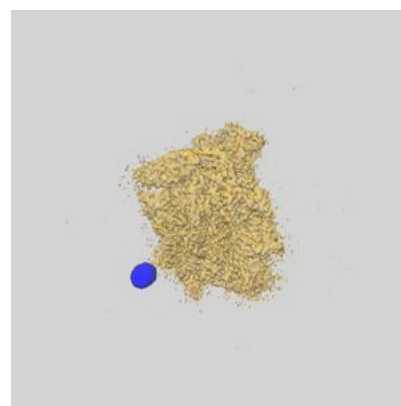
### 6.6.2 emd\_50963\_msk\_2.map [i](#)



X



Y

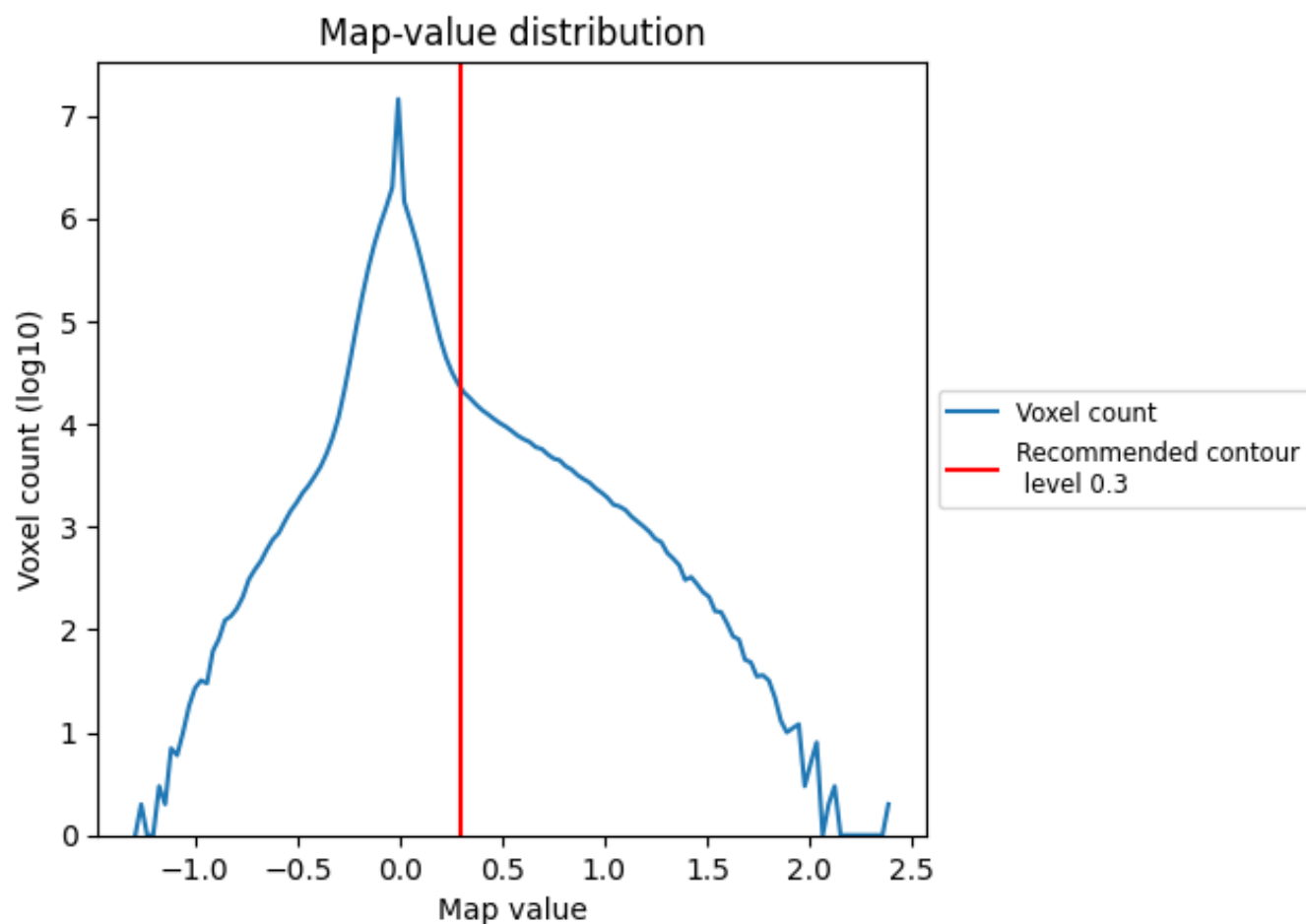


Z

## 7 Map analysis [i](#)

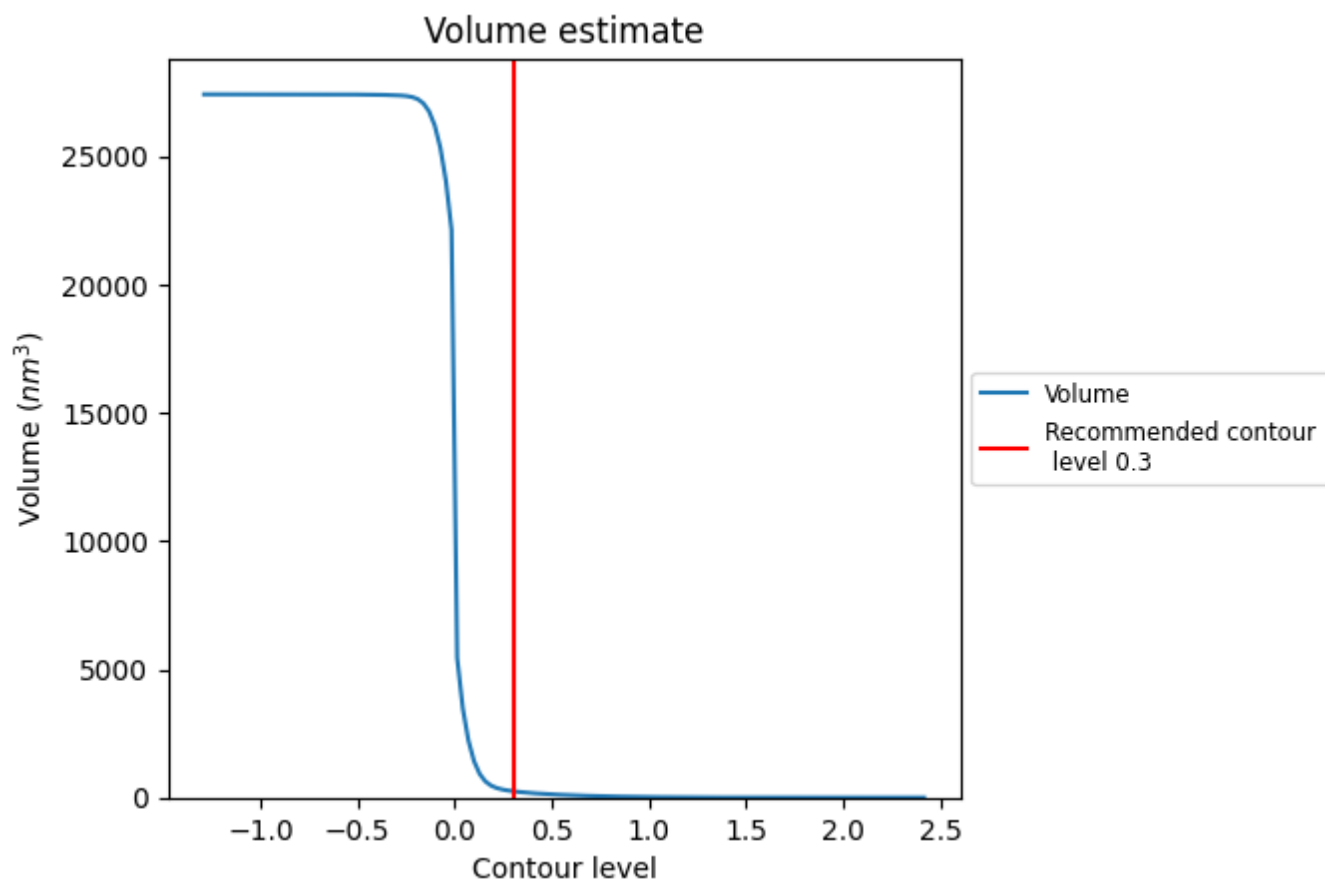
This section contains the results of statistical analysis of the map.

### 7.1 Map-value distribution [i](#)



The map-value distribution is plotted in 128 intervals along the x-axis. The y-axis is logarithmic. A spike in this graph at zero usually indicates that the volume has been masked.

## 7.2 Volume estimate [i](#)

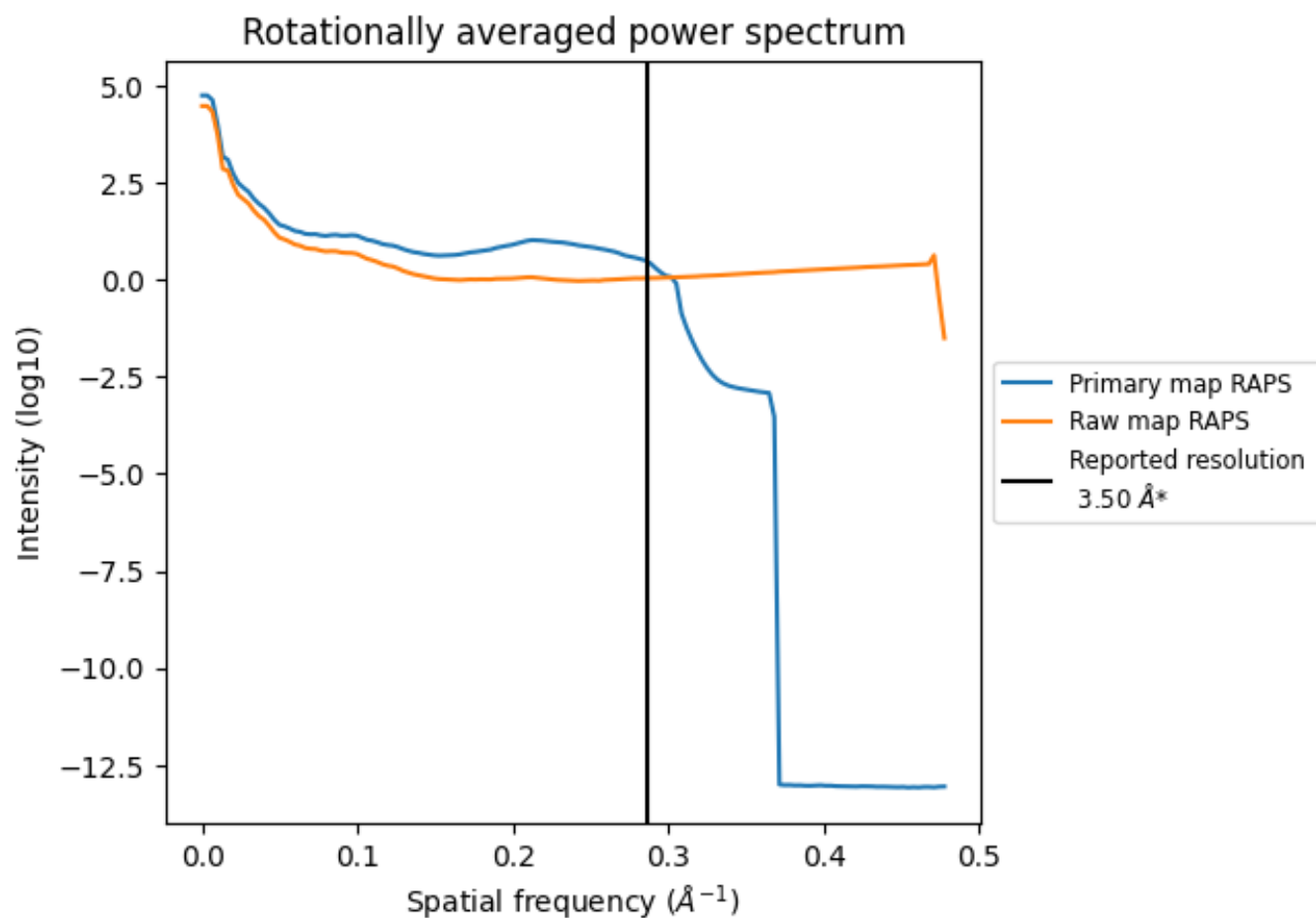


The volume at the recommended contour level is 246 nm<sup>3</sup>; this corresponds to an approximate mass of 222 kDa.

The volume estimate graph shows how the enclosed volume varies with the contour level. The recommended contour level is shown as a vertical line and the intersection between the line and the curve gives the volume of the enclosed surface at the given level.



### 7.3 Rotationally averaged power spectrum ⓘ

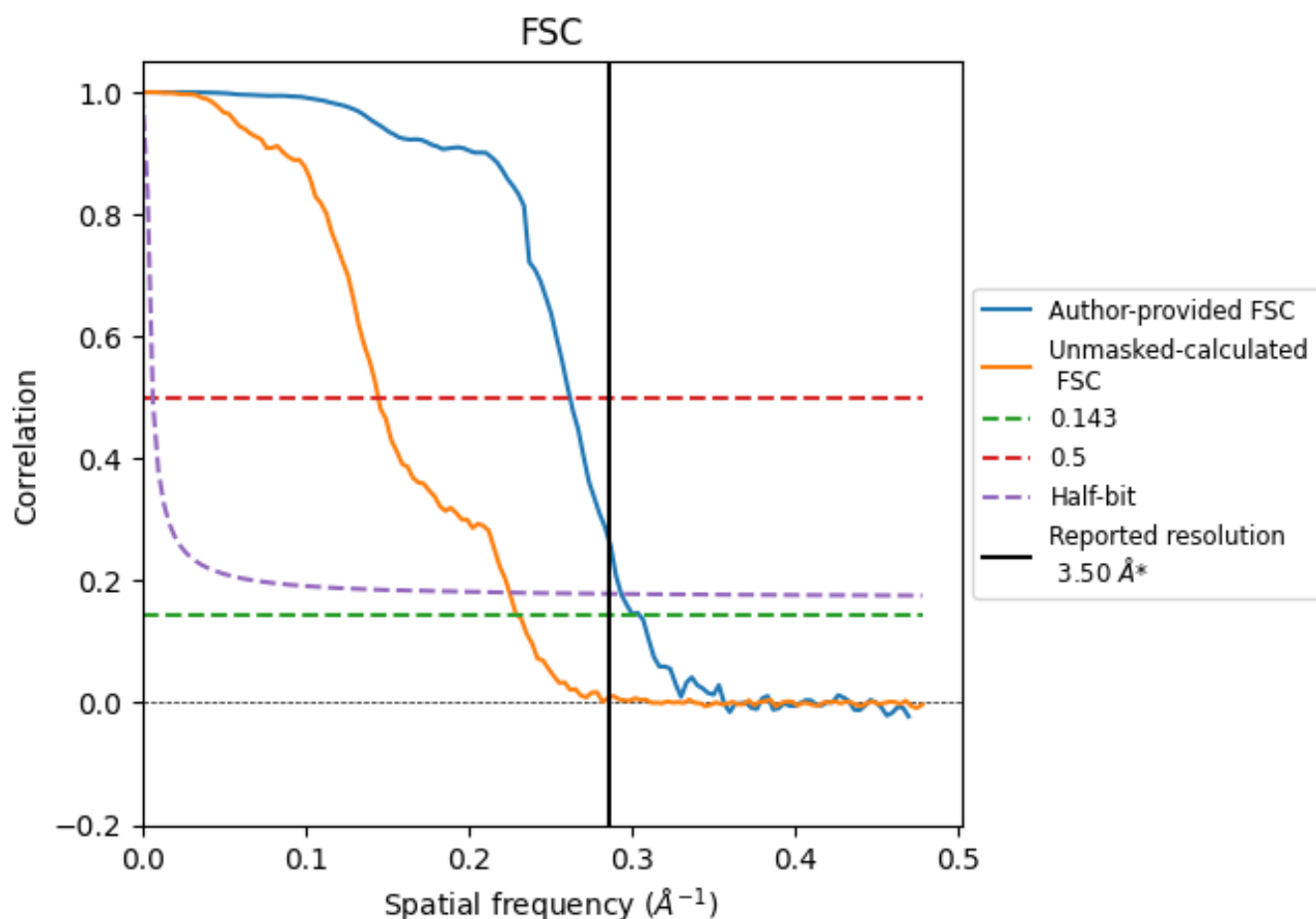


\*Reported resolution corresponds to spatial frequency of 0.286  $\text{\AA}^{-1}$

## 8 Fourier-Shell correlation [i](#)

Fourier-Shell Correlation (FSC) is the most commonly used method to estimate the resolution of single-particle and subtomogram-averaged maps. The shape of the curve depends on the imposed symmetry, mask and whether or not the two 3D reconstructions used were processed from a common reference. The reported resolution is shown as a black line. A curve is displayed for the half-bit criterion in addition to lines showing the 0.143 gold standard cut-off and 0.5 cut-off.

### 8.1 FSC [i](#)



\*Reported resolution corresponds to spatial frequency of 0.286  $\text{\AA}^{-1}$

## 8.2 Resolution estimates [i](#)

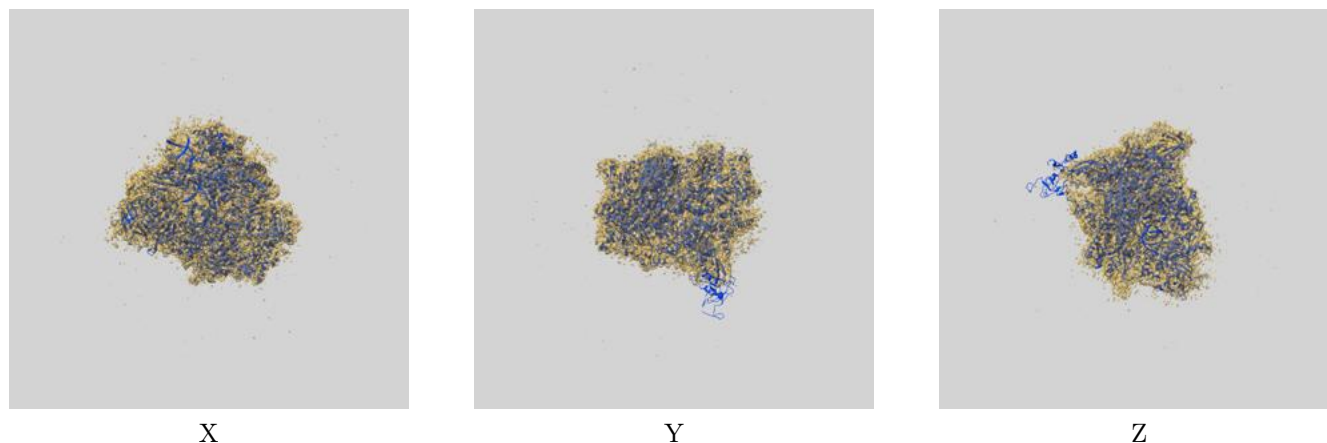
Resolution estimate (Å)	Estimation criterion (FSC cut-off)		
	0.143	0.5	Half-bit
Reported by author	3.50	-	-
Author-provided FSC curve	3.28	3.82	3.41
Unmasked-calculated*	4.35	6.92	4.44

\*Resolution estimate based on FSC curve calculated by comparison of deposited half-maps. The value from deposited half-maps intersecting FSC 0.143 CUT-OFF 4.35 differs from the reported value 3.5 by more than 10 %

## 9 Map-model fit [i](#)

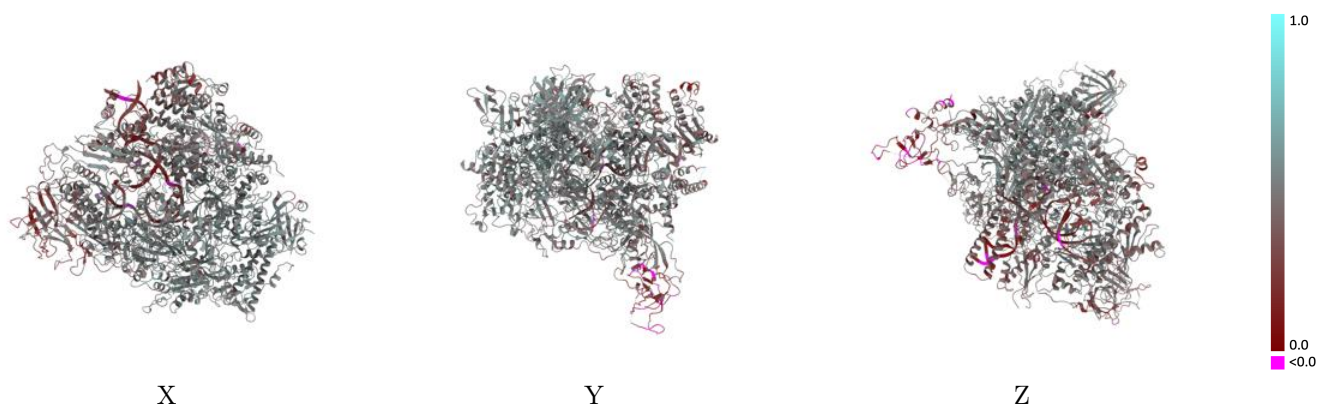
This section contains information regarding the fit between EMDB map EMD-50963 and PDB model 9G24. Per-residue inclusion information can be found in section [3](#) on page [8](#).

### 9.1 Map-model overlay [i](#)



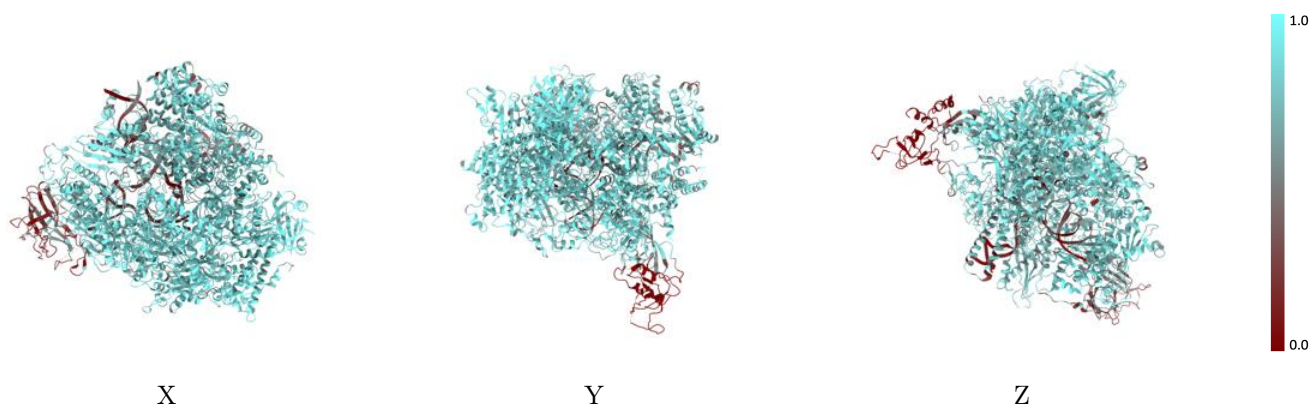
The images above show the 3D surface view of the map at the recommended contour level 0.3 at 50% transparency in yellow overlaid with a ribbon representation of the model coloured in blue. These images allow for the visual assessment of the quality of fit between the atomic model and the map.

## 9.2 Q-score mapped to coordinate model [i](#)



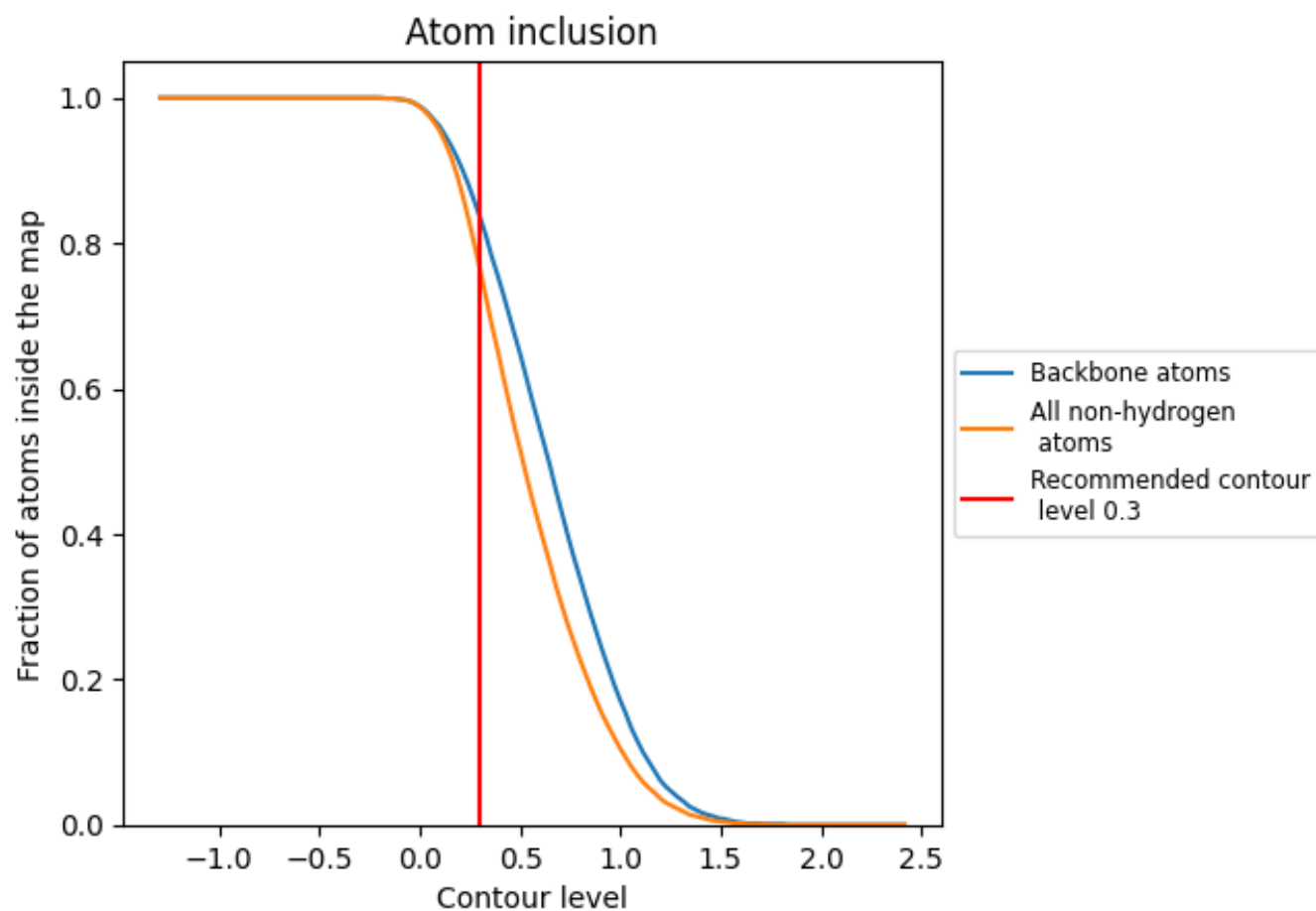
The images above show the model with each residue coloured according to its Q-score. This shows their resolvability in the map with higher Q-score values reflecting better resolvability. Please note: Q-score is calculating the resolvability of atoms, and thus high values are only expected at resolutions at which atoms can be resolved. Low Q-score values may therefore be expected for many entries.

## 9.3 Atom inclusion mapped to coordinate model [i](#)



The images above show the model with each residue coloured according to its atom inclusion. This shows to what extent they are inside the map at the recommended contour level (0.3).































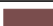





## 9.4 Atom inclusion [i](#)



At the recommended contour level, 84% of all backbone atoms, 76% of all non-hydrogen atoms, are inside the map.

## 9.5 Map-model fit summary

The table lists the average atom inclusion at the recommended contour level (0.3) and Q-score for the entire model and for each chain.

Chain	Atom inclusion	Q-score
All	 0.7640	 0.4460
A	 0.8070	 0.4590
B	 0.8500	 0.4770
C	 0.8690	 0.5020
D	 0.2610	 0.3270
E	 0.8230	 0.4370
F	 0.8870	 0.4870
G	 0.4060	 0.3150
H	 0.8760	 0.5060
I	 0.7690	 0.4410
J	 0.9040	 0.5170
K	 0.8790	 0.5040
L	 0.8650	 0.4810
M	 0.3160	 0.3260
N	 0.3800	 0.3610
R	 0.3930	 0.3120
S	 0.3020	 0.1710
T	 0.3130	 0.1860

