



Full wwPDB X-ray Structure Validation Report ⓘ

Apr 2, 2025 – 12:35 am BST

PDB ID : 6FQN / pdb_00006fqn
Title : Carbamylated T. californica acetylcholinesterase bound to uncharged hybrid reactivator 2
Authors : De la Mora, E.; Santoni, G.; de Souza, J.; Sussman, J.; Silman, I.; Baati, R.; Weik, M.; Nachon, F.
Deposited on : 2018-02-14
Resolution : 2.30 Å(reported)

This is a Full wwPDB X-ray Structure Validation Report for a publicly released PDB entry.

We welcome your comments at validation@mail.wwpdb.org

A user guide is available at

<https://www.wwpdb.org/validation/2017/XrayValidationReportHelp>

with specific help available everywhere you see the ⓘ symbol.

The types of validation reports are described at

<http://www.wwpdb.org/validation/2017/FAQs#types>.

The following versions of software and data (see [references ⓘ](#)) were used in the production of this report:

MolProbity	:	4.02b-467
Mogul	:	1.8.4, CSD as541be (2020)
Xtriage (Phenix)	:	1.13
EDS	:	3.0
buster-report	:	1.1.7 (2018)
Percentile statistics	:	20231227.v01 (using entries in the PDB archive December 27th 2023)
CCP4	:	9.0.003 (Gargrove)
Density-Fitness	:	1.0.11
Ideal geometry (proteins)	:	Engh & Huber (2001)
Ideal geometry (DNA, RNA)	:	Parkinson et al. (1996)
Validation Pipeline (wwPDB-VP)	:	2.42

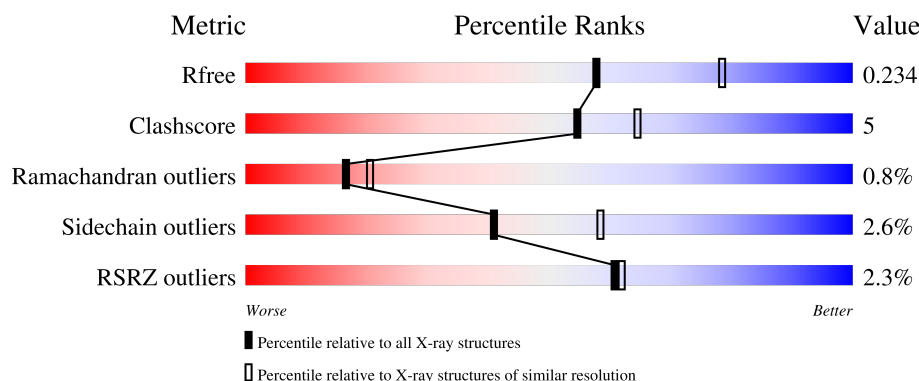
1 Overall quality at a glance

The following experimental techniques were used to determine the structure:

X-RAY DIFFRACTION


The reported resolution of this entry is 2.30 Å.

Percentile scores (ranging between 0-100) for global validation metrics of the entry are shown in the following graphic. The table shows the number of entries on which the scores are based.



Metric	Whole archive (#Entries)	Similar resolution (#Entries, resolution range(Å))
R_{free}	164625	5963 (2.30-2.30)
Clashscore	180529	6698 (2.30-2.30)
Ramachandran outliers	177936	6640 (2.30-2.30)
Sidechain outliers	177891	6640 (2.30-2.30)
RSRZ outliers	164620	5963 (2.30-2.30)

The table below summarises the geometric issues observed across the polymeric chains and their fit to the electron density. The red, orange, yellow and green segments of the lower bar indicate the fraction of residues that contain outliers for ≥ 3 , 2, 1 and 0 types of geometric quality criteria respectively. A grey segment represents the fraction of residues that are not modelled. The numeric value for each fraction is indicated below the corresponding segment, with a dot representing fractions $\leq 5\%$. The upper red bar (where present) indicates the fraction of residues that have poor fit to the electron density. The numeric value is given above the bar.

Mol	Chain	Length	Quality of chain
1	A	532	

2 Entry composition [i](#)

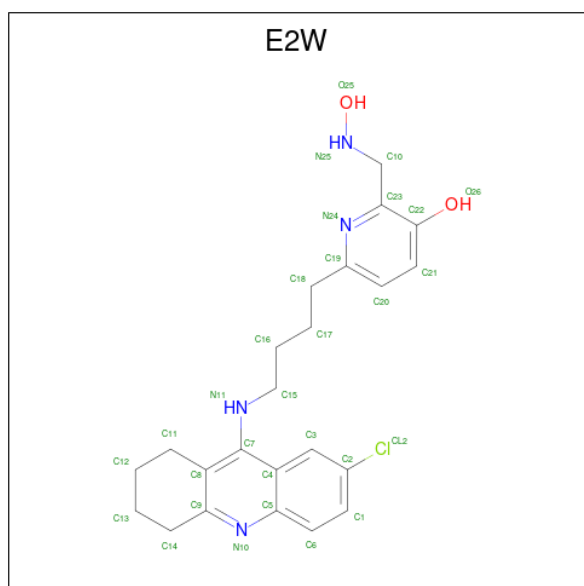
There are 7 unique types of molecules in this entry. The entry contains 4540 atoms, of which 0 are hydrogens and 0 are deuteriums.

In the tables below, the ZeroOcc column contains the number of atoms modelled with zero occupancy, the AltConf column contains the number of residues with at least one atom in alternate conformation and the Trace column contains the number of residues modelled with at most 2 atoms.

- Molecule 1 is a protein called Acetylcholinesterase.

Mol	Chain	Residues	Atoms					ZeroOcc	AltConf	Trace
1	A	532	Total	C	N	O	S	0	3	0
			4272	2737	726	787	22			

- Molecule 2 is 6-[4-[(7-chloranyl-1,2,3,4-tetrahydroacridin-9-yl)amino]butyl]-2-[(oxidanylamino)methyl]pyridin-3-ol (CCD ID: E2W) (formula: $C_{23}H_{27}ClN_4O_2$) (labeled as "Ligand of Interest" by depositor).



Mol	Chain	Residues	Atoms					ZeroOcc	AltConf
2	A	1	Total	C	Cl	N	O	0	0
			30	23	1	4	2		

- Molecule 3 is 2-acetamido-2-deoxy-beta-D-glucopyranose (CCD ID: NAG) (formula: $C_8H_{15}NO_6$).



Mol	Chain	Residues	Atoms				ZeroOcc	AltConf
3	A	1	Total	C	N	O	0	0
			14	8	1	5		
3	A	1	Total	C	N	O	0	0
			14	8	1	5		
3	A	1	Total	C	N	O	0	0
			14	8	1	5		

- Molecule 4 is 1,2-ETHANEDIOL (CCD ID: EDO) (formula: $C_2H_6O_2$).



Mol	Chain	Residues	Atoms			ZeroOcc	AltConf
4	A	1	Total	C	O	0	0
			4	2	2		

Continued on next page...

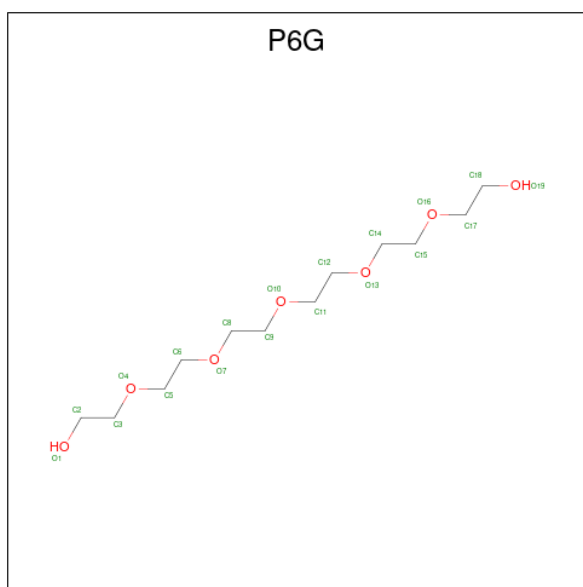
Continued from previous page...

Mol	Chain	Residues	Atoms			ZeroOcc	AltConf
4	A	1	Total	C	O	0	0
			4	2	2		

- Molecule 5 is CHLORIDE ION (CCD ID: CL) (formula: Cl).

Mol	Chain	Residues	Atoms			ZeroOcc	AltConf
5	A	6	Total	Cl		0	0
			6	6			

- Molecule 6 is HEXAETHYLENE GLYCOL (CCD ID: P6G) (formula: C₁₂H₂₆O₇).



Mol	Chain	Residues	Atoms			ZeroOcc	AltConf
6	A	1	Total	C	O	0	0
			19	12	7		

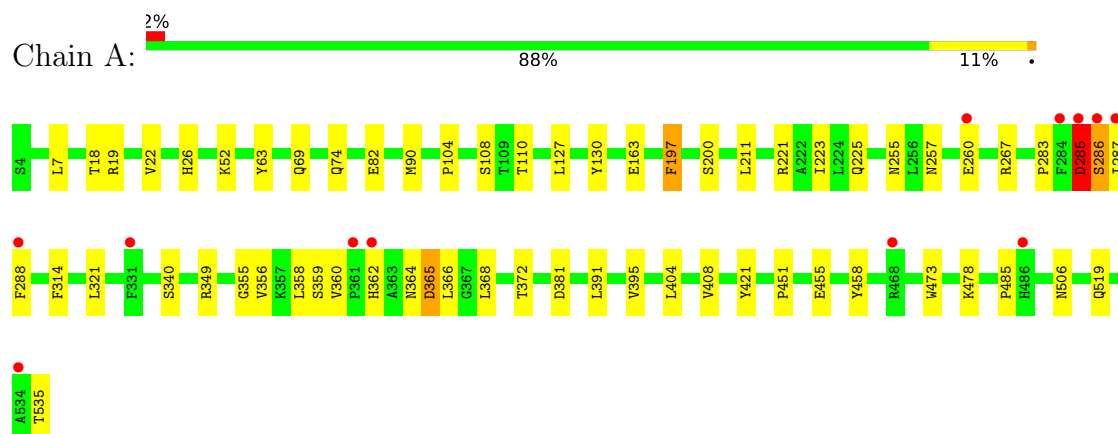
- Molecule 7 is water.

Mol	Chain	Residues	Atoms			ZeroOcc	AltConf
7	A	163	Total	O		0	0
			163	163			

3 Residue-property plots [i](#)

These plots are drawn for all protein, RNA, DNA and oligosaccharide chains in the entry. The first graphic for a chain summarises the proportions of the various outlier classes displayed in the second graphic. The second graphic shows the sequence view annotated by issues in geometry and electron density. Residues are color-coded according to the number of geometric quality criteria for which they contain at least one outlier: green = 0, yellow = 1, orange = 2 and red = 3 or more. A red dot above a residue indicates a poor fit to the electron density ($RSRZ > 2$). Stretches of 2 or more consecutive residues without any outlier are shown as a green connector. Residues present in the sample, but not in the model, are shown in grey.

- Molecule 1: Acetylcholinesterase



4 Data and refinement statistics

Property	Value	Source
Space group	P 31 2 1	Depositor
Cell constants a, b, c, α , β , γ	113.43Å 113.43Å 137.57Å 90.00° 90.00° 120.00°	Depositor
Resolution (Å)	39.97 – 2.30 39.97 – 2.30	Depositor EDS
% Data completeness (in resolution range)	99.8 (39.97-2.30) 99.7 (39.97-2.30)	Depositor EDS
R_{merge}	0.11	Depositor
R_{sym}	(Not available)	Depositor
$\langle I/\sigma(I) \rangle$ ¹	2.24 (at 2.29Å)	Xtriage
Refinement program	PHENIX 1.11.1_2575, PHENIX 1.11.1_2575	Depositor
R, R_{free}	0.205 , 0.234 0.205 , 0.234	Depositor DCC
R_{free} test set	2005 reflections (4.36%)	wwPDB-VP
Wilson B-factor (Å ²)	41.1	Xtriage
Anisotropy	0.663	Xtriage
Bulk solvent k_{sol} (e/Å ³), B_{sol} (Å ²)	0.31 , 35.7	EDS
L-test for twinning ²	$\langle L \rangle = 0.47$, $\langle L^2 \rangle = 0.30$	Xtriage
Estimated twinning fraction	0.035 for -h,-k,l	Xtriage
F_o, F_c correlation	0.96	EDS
Total number of atoms	4540	wwPDB-VP
Average B, all atoms (Å ²)	51.0	wwPDB-VP

Xtriage's analysis on translational NCS is as follows: *The largest off-origin peak in the Patterson function is 3.16% of the height of the origin peak. No significant pseudotranslation is detected.*

¹Intensities estimated from amplitudes.

²Theoretical values of $\langle |L| \rangle$, $\langle L^2 \rangle$ for acentric reflections are 0.5, 0.333 respectively for untwinned datasets, and 0.375, 0.2 for perfectly twinned datasets.

5 Model quality [i](#)

5.1 Standard geometry [i](#)

Bond lengths and bond angles in the following residue types are not validated in this section: NAG, EDO, CL, P6G, E2W, BXT

The Z score for a bond length (or angle) is the number of standard deviations the observed value is removed from the expected value. A bond length (or angle) with $|Z| > 5$ is considered an outlier worth inspection. RMSZ is the root-mean-square of all Z scores of the bond lengths (or angles).

Mol	Chain	Bond lengths		Bond angles	
		RMSZ	$\# Z > 5$	RMSZ	$\# Z > 5$
1	A	0.39	0/4385	0.56	0/5952

Chiral center outliers are detected by calculating the chiral volume of a chiral center and verifying if the center is modelled as a planar moiety or with the opposite hand. A planarity outlier is detected by checking planarity of atoms in a peptide group, atoms in a mainchain group or atoms of a sidechain that are expected to be planar.

Mol	Chain	#Chirality outliers	#Planarity outliers
1	A	0	2

There are no bond length outliers.

There are no bond angle outliers.

There are no chirality outliers.

All (2) planarity outliers are listed below:

Mol	Chain	Res	Type	Group
1	A	285	ASP	Peptide
1	A	286	SER	Peptide

5.2 Too-close contacts [i](#)

In the following table, the Non-H and H(model) columns list the number of non-hydrogen atoms and hydrogen atoms in the chain respectively. The H(added) column lists the number of hydrogen atoms added and optimized by MolProbity. The Clashes column lists the number of clashes within the asymmetric unit, whereas Symm-Clashes lists symmetry-related clashes.

Mol	Chain	Non-H	H(model)	H(added)	Clashes	Symm-Clashes
1	A	4272	0	4110	37	0

Continued on next page...

Continued from previous page...

Mol	Chain	Non-H	H(model)	H(added)	Clashes	Symm-Clashes
2	A	30	0	0	0	0
3	A	42	0	39	3	0
4	A	8	0	12	0	0
5	A	6	0	0	1	0
6	A	19	0	26	1	0
7	A	163	0	0	4	0
All	All	4540	0	4187	40	0

The all-atom clashscore is defined as the number of clashes found per 1000 atoms (including hydrogen atoms). The all-atom clashscore for this structure is 5.

All (40) close contacts within the same asymmetric unit are listed below, sorted by their clash magnitude.

Atom-1	Atom-2	Interatomic distance (Å)	Clash overlap (Å)
1:A:260:GLU:OE1	7:A:701:HOH:O	2.07	0.72
1:A:110:THR:HG21	1:A:478:LYS:HA	1.77	0.64
1:A:104:PRO:O	7:A:702:HOH:O	2.15	0.64
1:A:69:GLN:HG2	1:A:90:MET:HE1	1.80	0.64
1:A:356:VAL:HG21	1:A:372:THR:HG22	1.85	0.57
1:A:368:LEU:O	1:A:372:THR:HG23	2.07	0.54
1:A:364:ASN:ND2	1:A:535:THR:OG1	2.41	0.54
3:A:602:NAG:O7	3:A:602:NAG:O3	2.22	0.54
1:A:69:GLN:H	1:A:90:MET:HE2	1.74	0.53
1:A:287:ILE:HD12	1:A:358:LEU:HD22	1.90	0.52
1:A:69:GLN:H	1:A:90:MET:CE	2.24	0.51
1:A:69:GLN:HG2	1:A:90:MET:CE	2.40	0.50
1:A:288:PHE:CE1	1:A:359:SER:HA	2.48	0.49
1:A:110:THR:HG21	1:A:478:LYS:HG2	1.96	0.48
1:A:519:GLN:NE2	7:A:714:HOH:O	2.44	0.48
1:A:283:PRO:O	1:A:285:ASP:N	2.47	0.47
1:A:506:ASN:HB2	5:A:611:CL:CL	2.51	0.47
1:A:287:ILE:HG21	1:A:358:LEU:HB3	1.96	0.46
1:A:225:GLN:HG2	1:A:421:TYR:OH	2.15	0.46
1:A:349:ARG:HA	1:A:349:ARG:HD2	1.63	0.45
1:A:19:ARG:NH2	1:A:26:HIS:HB2	2.31	0.45
1:A:362:HIS:O	1:A:362:HIS:CG	2.69	0.44
1:A:288:PHE:HE1	1:A:359:SER:HA	1.82	0.44
1:A:255:ASN:OD1	1:A:257:ASN:ND2	2.51	0.44
1:A:197:PHE:HB3	1:A:223:ILE:HB	2.01	0.43
1:A:404:LEU:O	1:A:408:VAL:HG23	2.19	0.43
1:A:197:PHE:CB	1:A:223:ILE:HB	2.48	0.43

Continued on next page...

Continued from previous page...

Atom-1	Atom-2	Interatomic distance (Å)	Clash overlap (Å)
1:A:360:VAL:O	1:A:360:VAL:HG23	2.18	0.42
1:A:74:GLN:NE2	7:A:724:HOH:O	2.49	0.42
1:A:127:LEU:HD12	1:A:130:TYR:CE2	2.54	0.42
1:A:163:GLU:HB3	1:A:267:ARG:NH2	2.33	0.42
1:A:359:SER:OG	1:A:395:VAL:HG22	2.18	0.42
1:A:451:PRO:HA	1:A:458:TYR:CD2	2.55	0.42
1:A:455:GLU:O	3:A:604:NAG:H82	2.20	0.41
1:A:355:GLY:HA3	1:A:391:LEU:HD21	2.01	0.41
1:A:365[A]:ASP:OD2	1:A:366:LEU:N	2.54	0.41
1:A:349:ARG:HD3	1:A:381:ASP:O	2.21	0.41
6:A:612:P6G:H141	6:A:612:P6G:H112	1.53	0.40
1:A:211:LEU:HD23	1:A:314:PHE:HB3	2.04	0.40
3:A:602:NAG:HO3	3:A:602:NAG:C7	2.28	0.40

There are no symmetry-related clashes.

5.3 Torsion angles [i](#)

5.3.1 Protein backbone [i](#)

In the following table, the Percentiles column shows the percent Ramachandran outliers of the chain as a percentile score with respect to all X-ray entries followed by that with respect to entries of similar resolution.

The Analysed column shows the number of residues for which the backbone conformation was analysed, and the total number of residues.

Mol	Chain	Analysed	Favoured	Allowed	Outliers	Percentiles	
1	A	532/532 (100%)	502 (94%)	26 (5%)	4 (1%)	16	20

All (4) Ramachandran outliers are listed below:

Mol	Chain	Res	Type
1	A	286	SER
1	A	285	ASP
1	A	22	VAL
1	A	485	PRO

5.3.2 Protein sidechains ⓘ

In the following table, the Percentiles column shows the percent sidechain outliers of the chain as a percentile score with respect to all X-ray entries followed by that with respect to entries of similar resolution.

The Analysed column shows the number of residues for which the sidechain conformation was analysed, and the total number of residues.

Mol	Chain	Analysed	Rotameric	Outliers	Percentiles
1	A	467/464 (101%)	454 (97%)	13 (3%)	38 55

All (13) residues with a non-rotameric sidechain are listed below:

Mol	Chain	Res	Type
1	A	7	LEU
1	A	18	THR
1	A	52	LYS
1	A	63	TYR
1	A	82	GLU
1	A	108	SER
1	A	197	PHE
1	A	221	ARG
1	A	321	LEU
1	A	340	SER
1	A	365[A]	ASP
1	A	365[B]	ASP
1	A	473	TRP

Sometimes sidechains can be flipped to improve hydrogen bonding and reduce clashes. All (1) such sidechains are listed below:

Mol	Chain	Res	Type
1	A	364	ASN

5.3.3 RNA ⓘ

There are no RNA molecules in this entry.

5.4 Non-standard residues in protein, DNA, RNA chains ⓘ

1 non-standard protein/DNA/RNA residue is modelled in this entry.

In the following table, the Counts columns list the number of bonds (or angles) for which Mogul

statistics could be retrieved, the number of bonds (or angles) that are observed in the model and the number of bonds (or angles) that are defined in the Chemical Component Dictionary. The Link column lists molecule types, if any, to which the group is linked. The Z score for a bond length (or angle) is the number of standard deviations the observed value is removed from the expected value. A bond length (or angle) with $|Z| > 2$ is considered an outlier worth inspection. RMSZ is the root-mean-square of all Z scores of the bond lengths (or angles).

Mol	Type	Chain	Res	Link	Bond lengths			Bond angles		
					Counts	RMSZ	# $ Z > 2$	Counts	RMSZ	# $ Z > 2$
1	BXT	A	200	1	9,11,12	1.36	2 (22%)	6,13,15	2.10	2 (33%)

In the following table, the Chirals column lists the number of chiral outliers, the number of chiral centers analysed, the number of these observed in the model and the number defined in the Chemical Component Dictionary. Similar counts are reported in the Torsion and Rings columns. '-' means no outliers of that kind were identified.

Mol	Type	Chain	Res	Link	Chirals	Torsions	Rings
1	BXT	A	200	1	-	7/11/13/15	-

All (2) bond length outliers are listed below:

Mol	Chain	Res	Type	Atoms	Z	Observed(Å)	Ideal(Å)
1	A	200	BXT	OG-C1	2.45	1.39	1.34
1	A	200	BXT	O2-C1	2.12	1.24	1.21

All (2) bond angle outliers are listed below:

Mol	Chain	Res	Type	Atoms	Z	Observed(°)	Ideal(°)
1	A	200	BXT	OG-C1-N3	4.43	115.49	111.19
1	A	200	BXT	OG-C1-O2	-2.31	120.85	124.78

There are no chirality outliers.

All (7) torsion outliers are listed below:

Mol	Chain	Res	Type	Atoms
1	A	200	BXT	C2-C4-N3-C5
1	A	200	BXT	C-CA-CB-OG
1	A	200	BXT	OG-C1-N3-C4
1	A	200	BXT	OG-C1-N3-C5
1	A	200	BXT	O2-C1-N3-C4
1	A	200	BXT	O2-C1-N3-C5
1	A	200	BXT	N-CA-CB-OG

There are no ring outliers.

No monomer is involved in short contacts.

5.5 Carbohydrates [i](#)

There are no oligosaccharides in this entry.

5.6 Ligand geometry [i](#)

Of 13 ligands modelled in this entry, 6 are monoatomic - leaving 7 for Mogul analysis.

In the following table, the Counts columns list the number of bonds (or angles) for which Mogul statistics could be retrieved, the number of bonds (or angles) that are observed in the model and the number of bonds (or angles) that are defined in the Chemical Component Dictionary. The Link column lists molecule types, if any, to which the group is linked. The Z score for a bond length (or angle) is the number of standard deviations the observed value is removed from the expected value. A bond length (or angle) with $|Z| > 2$ is considered an outlier worth inspection. RMSZ is the root-mean-square of all Z scores of the bond lengths (or angles).

Mol	Type	Chain	Res	Link	Bond lengths			Bond angles		
					Counts	RMSZ	$\# Z > 2$	Counts	RMSZ	$\# Z > 2$
3	NAG	A	604	1	14,14,15	0.83	1 (7%)	17,19,21	0.88	1 (5%)
4	EDO	A	605	-	3,3,3	0.41	0	2,2,2	0.64	0
2	E2W	A	601	-	32,33,33	2.55	14 (43%)	35,45,45	1.35	4 (11%)
4	EDO	A	613	-	3,3,3	0.56	0	2,2,2	0.29	0
3	NAG	A	602	1	14,14,15	1.55	2 (14%)	17,19,21	1.45	2 (11%)
6	P6G	A	612	-	18,18,18	0.66	0	17,17,17	1.26	1 (5%)
3	NAG	A	603	1	14,14,15	0.54	0	17,19,21	0.72	0

In the following table, the Chirals column lists the number of chiral outliers, the number of chiral centers analysed, the number of these observed in the model and the number defined in the Chemical Component Dictionary. Similar counts are reported in the Torsion and Rings columns. '-' means no outliers of that kind were identified.

Mol	Type	Chain	Res	Link	Chirals	Torsions	Rings
3	NAG	A	604	1	-	2/6/23/26	0/1/1/1
4	EDO	A	605	-	-	1/1/1/1	-
2	E2W	A	601	-	-	5/10/18/18	0/4/4/4
4	EDO	A	613	-	-	0/1/1/1	-
3	NAG	A	602	1	-	4/6/23/26	0/1/1/1
6	P6G	A	612	-	-	8/16/16/16	-

Continued on next page...

Continued from previous page...

Mol	Type	Chain	Res	Link	Chirals	Torsions	Rings
3	NAG	A	603	1	-	2/6/23/26	0/1/1/1

All (17) bond length outliers are listed below:

Mol	Chain	Res	Type	Atoms	Z	Observed(Å)	Ideal(Å)
2	A	601	E2W	C9-N10	6.62	1.40	1.32
2	A	601	E2W	C11-C8	5.75	1.60	1.51
2	A	601	E2W	C7-C8	5.23	1.47	1.38
3	A	602	NAG	C1-C2	5.20	1.60	1.52
2	A	601	E2W	C10-C23	3.29	1.57	1.51
2	A	601	E2W	C8-C9	-3.12	1.35	1.40
2	A	601	E2W	C15-N11	3.09	1.52	1.45
2	A	601	E2W	C6-C1	3.04	1.43	1.36
2	A	601	E2W	O26-C22	3.00	1.42	1.36
2	A	601	E2W	C7-N11	2.98	1.46	1.37
2	A	601	E2W	C3-C4	2.72	1.47	1.42
2	A	601	E2W	C14-C9	2.61	1.55	1.50
3	A	604	NAG	O5-C1	2.56	1.47	1.43
2	A	601	E2W	C6-C5	-2.43	1.37	1.41
3	A	602	NAG	O5-C1	2.21	1.47	1.43
2	A	601	E2W	C19-N24	-2.18	1.30	1.34
2	A	601	E2W	C18-C19	2.14	1.55	1.51

All (8) bond angle outliers are listed below:

Mol	Chain	Res	Type	Atoms	Z	Observed(°)	Ideal(°)
3	A	602	NAG	C1-O5-C5	5.01	118.98	112.19
2	A	601	E2W	C8-C9-N10	-3.56	120.64	123.68
3	A	604	NAG	C1-O5-C5	3.22	116.55	112.19
2	A	601	E2W	C9-N10-C5	2.80	121.13	117.67
2	A	601	E2W	C19-N24-C23	2.72	121.47	118.16
2	A	601	E2W	C16-C15-N11	-2.38	105.10	111.49
6	A	612	P6G	O10-C11-C12	-2.15	100.70	110.39
3	A	602	NAG	C2-N2-C7	2.07	125.85	122.90

There are no chirality outliers.

All (22) torsion outliers are listed below:

Mol	Chain	Res	Type	Atoms
3	A	603	NAG	O5-C5-C6-O6
3	A	602	NAG	C1-C2-N2-C7

Continued on next page...

Continued from previous page...

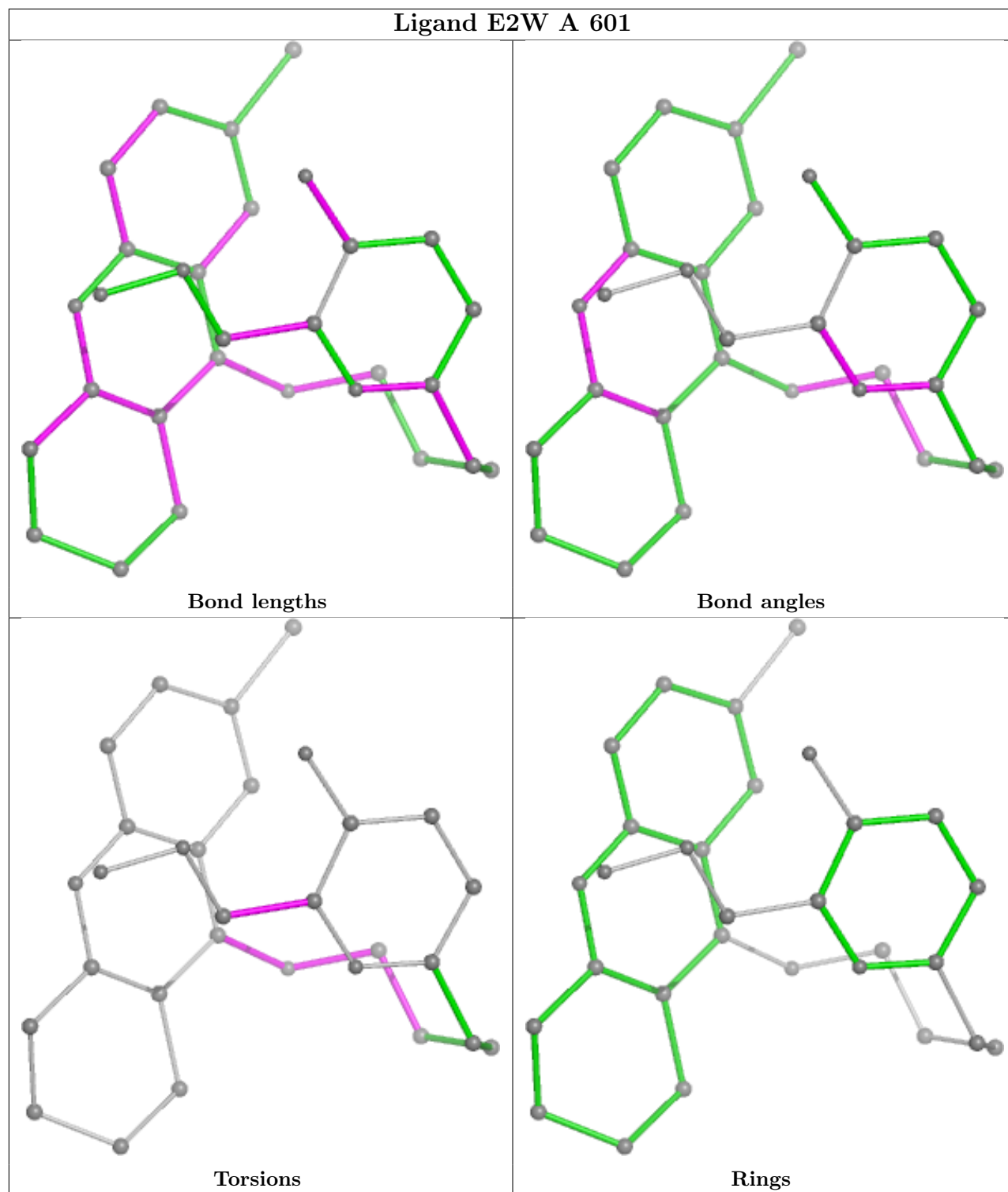
Mol	Chain	Res	Type	Atoms
2	A	601	E2W	N11-C15-C16-C17
3	A	603	NAG	C4-C5-C6-O6
6	A	612	P6G	O4-C5-C6-O7
3	A	602	NAG	O5-C5-C6-O6
3	A	602	NAG	C4-C5-C6-O6
6	A	612	P6G	O7-C8-C9-O10
6	A	612	P6G	O16-C17-C18-O19
6	A	612	P6G	C11-C12-O13-C14
3	A	604	NAG	C4-C5-C6-O6
2	A	601	E2W	N25-C10-C23-C22
3	A	602	NAG	C3-C2-N2-C7
2	A	601	E2W	C16-C15-N11-C7
3	A	604	NAG	O5-C5-C6-O6
6	A	612	P6G	C18-C17-O16-C15
2	A	601	E2W	C8-C7-N11-C15
2	A	601	E2W	C4-C7-N11-C15
6	A	612	P6G	O10-C11-C12-O13
4	A	605	EDO	O1-C1-C2-O2
6	A	612	P6G	C6-C5-O4-C3
6	A	612	P6G	O13-C14-C15-O16

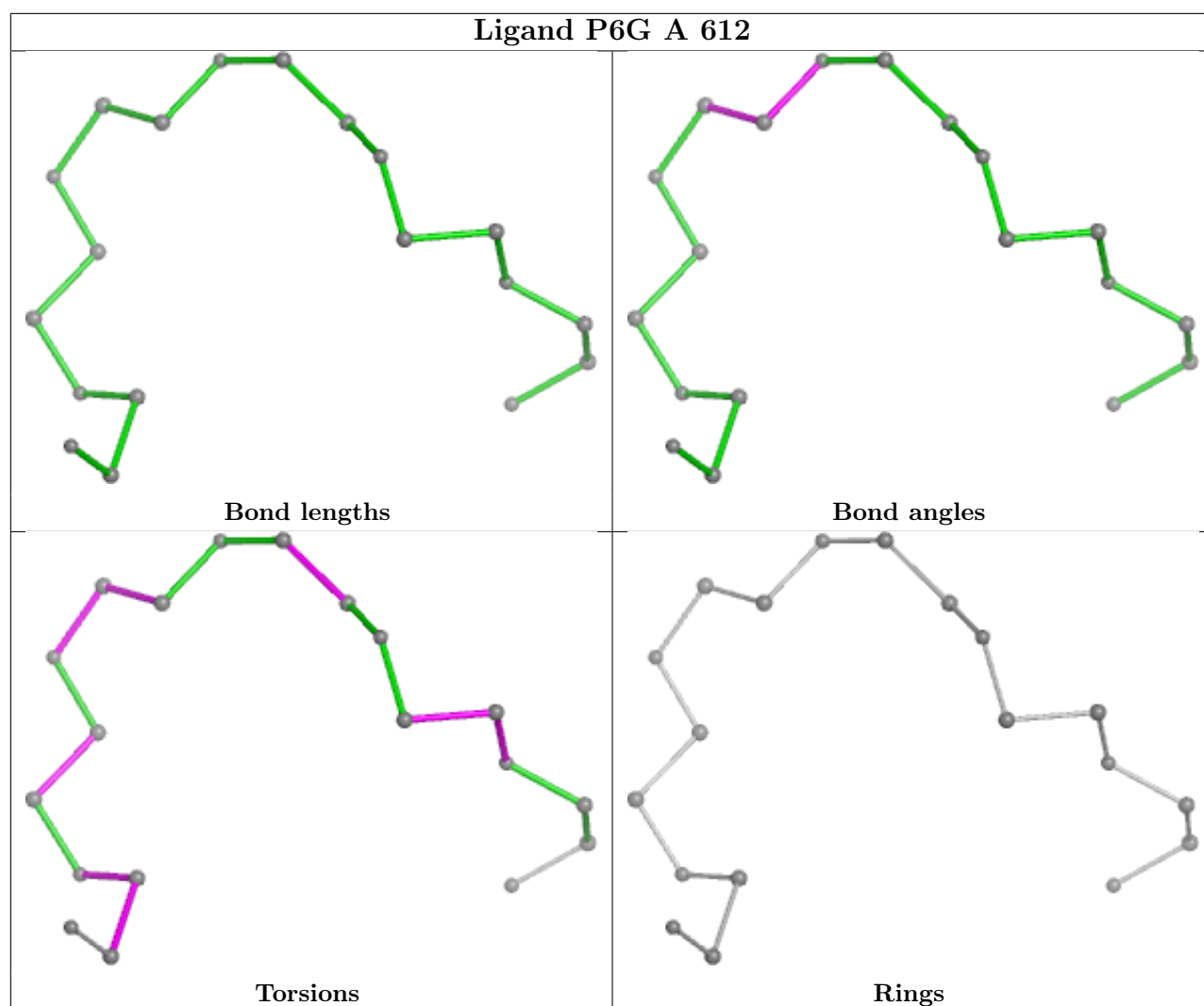
There are no ring outliers.

3 monomers are involved in 4 short contacts:

Mol	Chain	Res	Type	Clashes	Symm-Clashes
3	A	604	NAG	1	0
3	A	602	NAG	2	0
6	A	612	P6G	1	0

The following is a two-dimensional graphical depiction of Mogul quality analysis of bond lengths, bond angles, torsion angles, and ring geometry for all instances of the Ligand of Interest. In addition, ligands with molecular weight > 250 and outliers as shown on the validation Tables will also be included. For torsion angles, if less than 5% of the Mogul distribution of torsion angles is within 10 degrees of the torsion angle in question, then that torsion angle is considered an outlier. Any bond that is central to one or more torsion angles identified as an outlier by Mogul will be highlighted in the graph. For rings, the root-mean-square deviation (RMSD) between the ring in question and similar rings identified by Mogul is calculated over all ring torsion angles. If the average RMSD is greater than 60 degrees and the minimal RMSD between the ring in question and any Mogul-identified rings is also greater than 60 degrees, then that ring is considered an outlier. The outliers are highlighted in purple. The color gray indicates Mogul did not find sufficient equivalents in the CSD to analyse the geometry.





5.7 Other polymers [i](#)

There are no such residues in this entry.

5.8 Polymer linkage issues [i](#)

There are no chain breaks in this entry.

6 Fit of model and data [i](#)

6.1 Protein, DNA and RNA chains [i](#)

In the following table, the column labelled ‘#RSRZ> 2’ contains the number (and percentage) of RSRZ outliers, followed by percent RSRZ outliers for the chain as percentile scores relative to all X-ray entries and entries of similar resolution. The OWAB column contains the minimum, median, 95th percentile and maximum values of the occupancy-weighted average B-factor per residue. The column labelled ‘Q< 0.9’ lists the number of (and percentage) of residues with an average occupancy less than 0.9.

Mol	Chain	Analysed	<RSRZ>	#RSRZ>2	OWAB(Å ²)	Q<0.9
1	A	531/532 (99%)	-0.14	12 (2%) 61 62	20, 48, 72, 110	3 (0%)

All (12) RSRZ outliers are listed below:

Mol	Chain	Res	Type	RSRZ
1	A	284	PHE	4.4
1	A	331	PHE	3.4
1	A	361	PRO	2.8
1	A	286	SER	2.7
1	A	287	ILE	2.6
1	A	468[A]	ARG	2.4
1	A	285	ASP	2.4
1	A	362	HIS	2.4
1	A	486	HIS	2.3
1	A	260	GLU	2.2
1	A	534	ALA	2.1
1	A	288	PHE	2.1

6.2 Non-standard residues in protein, DNA, RNA chains [i](#)

In the following table, the Atoms column lists the number of modelled atoms in the group and the number defined in the chemical component dictionary. The B-factors column lists the minimum, median, 95th percentile and maximum values of B factors of atoms in the group. The column labelled ‘Q< 0.9’ lists the number of atoms with occupancy less than 0.9.

Mol	Type	Chain	Res	Atoms	RSCC	RSR	B-factors(Å ²)	Q<0.9
1	BXT	A	200	12/13	0.97	0.09	34,40,53,53	0

6.3 Carbohydrates [i](#)

There are no monosaccharides in this entry.

6.4 Ligands [i](#)

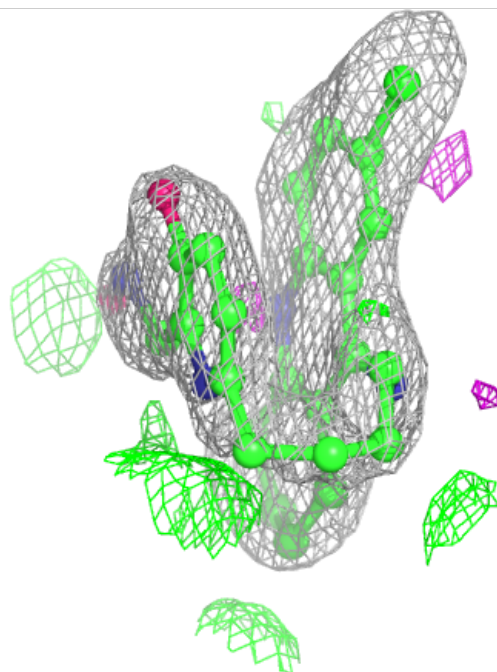
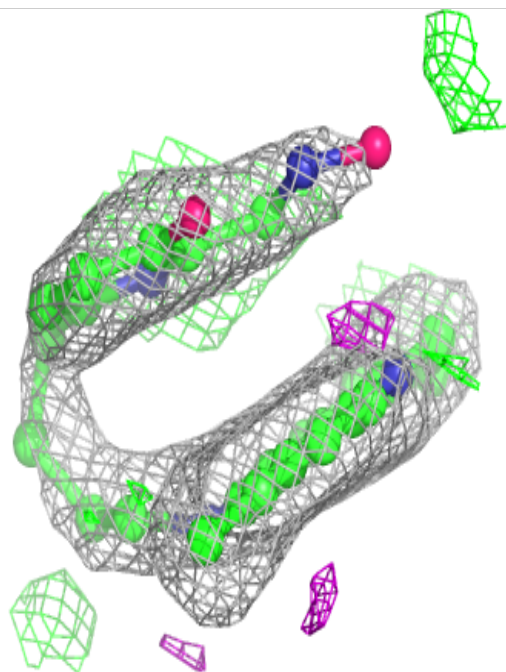
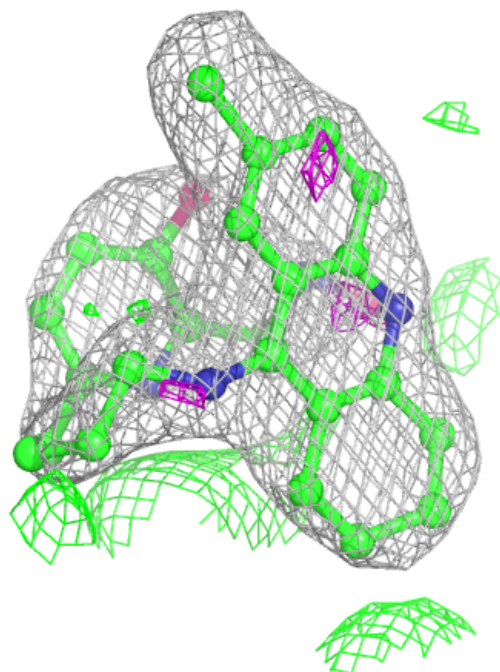
In the following table, the Atoms column lists the number of modelled atoms in the group and the number defined in the chemical component dictionary. The B-factors column lists the minimum, median, 95th percentile and maximum values of B factors of atoms in the group. The column labelled 'Q< 0.9' lists the number of atoms with occupancy less than 0.9.

Mol	Type	Chain	Res	Atoms	RSCC	RSR	B-factors(\AA^2)	Q<0.9
3	NAG	A	602	14/15	0.43	0.19	72,91,96,98	0
3	NAG	A	604	14/15	0.74	0.13	86,91,101,102	0
4	EDO	A	613	4/4	0.79	0.25	56,65,70,77	0
2	E2W	A	601	30/30	0.87	0.17	46,57,62,65	30
6	P6G	A	612	19/19	0.89	0.16	45,53,60,64	0
3	NAG	A	603	14/15	0.90	0.08	47,53,61,62	0
5	CL	A	608	1/1	0.91	0.12	81,81,81,81	0
4	EDO	A	605	4/4	0.91	0.14	48,50,54,55	0
5	CL	A	611	1/1	0.92	0.09	70,70,70,70	0
5	CL	A	609	1/1	0.92	0.10	86,86,86,86	0
5	CL	A	606	1/1	0.93	0.10	76,76,76,76	0
5	CL	A	607	1/1	0.95	0.10	77,77,77,77	0
5	CL	A	610	1/1	0.95	0.08	74,74,74,74	0

The following is a graphical depiction of the model fit to experimental electron density of all instances of the Ligand of Interest. In addition, ligands with molecular weight > 250 and outliers as shown on the geometry validation Tables will also be included. Each fit is shown from different orientation to approximate a three-dimensional view.

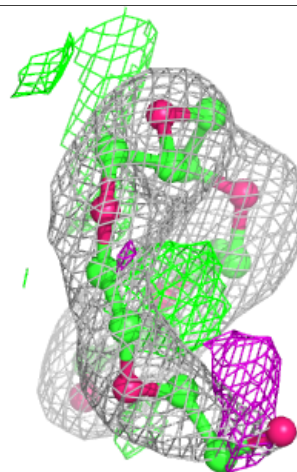
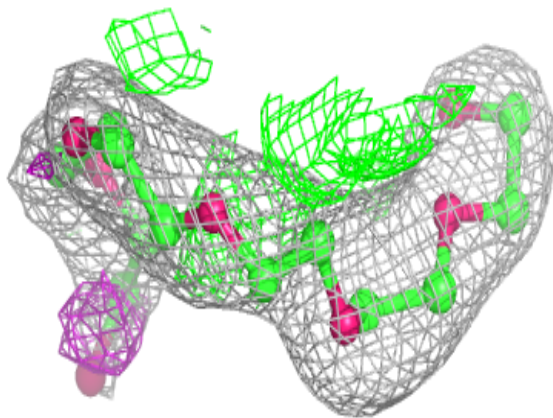
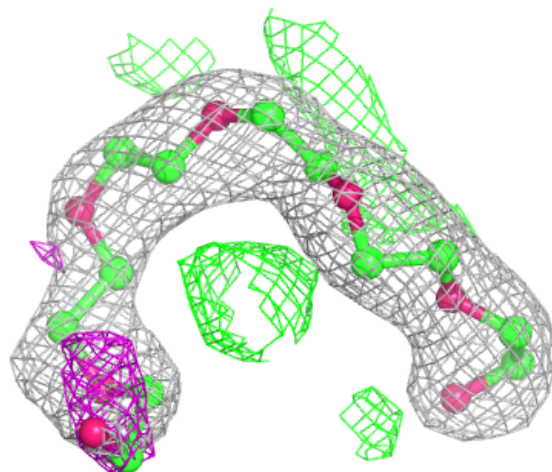
Electron density around E2W A 601:

$2mF_o-DF_c$ (at 0.7 rmsd) in gray
 mF_o-DF_c (at 3 rmsd) in purple (negative)
and green (positive)



Electron density around P6G A 612:

$2mF_o-DF_c$ (at 0.7 rmsd) in gray
 mF_o-DF_c (at 3 rmsd) in purple (negative)
and green (positive)



6.5 Other polymers ⓘ

There are no such residues in this entry.