



wwPDB X-ray Structure Validation Summary Report ⓘ

Nov 16, 2024 – 09:51 PM EST

PDB ID : 4FQC
Title : Crystal Structure of PGT121 Fab Bound to a complex-type sialylated N-glycan
Authors : Scharf, L.; Bjorkman, P.J.
Deposited on : 2012-06-25
Resolution : 2.40 Å(reported)

This is a wwPDB X-ray Structure Validation Summary Report for a publicly released PDB entry.

We welcome your comments at validation@mail.wwpdb.org

A user guide is available at

<https://www.wwpdb.org/validation/2017/XrayValidationReportHelp>

with specific help available everywhere you see the ⓘ symbol.

The types of validation reports are described at

<http://www.wwpdb.org/validation/2017/FAQs#types>.

The following versions of software and data (see [references ⓘ](#)) were used in the production of this report:

MolProbity	:	4.02b-467
Mogul	:	2022.3.0, CSD as543be (2022)
Xtriage (Phenix)	:	1.20.1
EDS	:	3.0
Percentile statistics	:	20231227.v01 (using entries in the PDB archive December 27th 2023)
CCP4	:	9.0.003 (Gargrove)
Density-Fitness	:	1.0.11
Ideal geometry (proteins)	:	Engh & Huber (2001)
Ideal geometry (DNA, RNA)	:	Parkinson et al. (1996)
Validation Pipeline (wwPDB-VP)	:	2.39

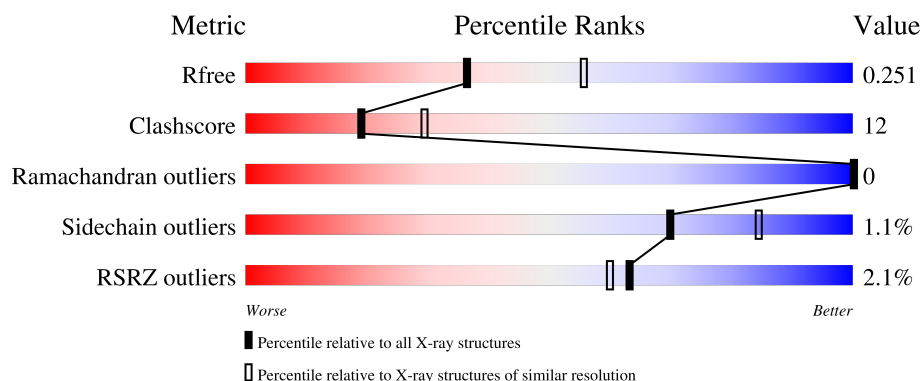
1 Overall quality at a glance

The following experimental techniques were used to determine the structure:

X-RAY DIFFRACTION

The reported resolution of this entry is 2.40 Å.

Percentile scores (ranging between 0-100) for global validation metrics of the entry are shown in the following graphic. The table shows the number of entries on which the scores are based.



Metric	Whole archive (#Entries)	Similar resolution (#Entries, resolution range(Å))
R_{free}	164625	4642 (2.40-2.40)
Clashscore	180529	5218 (2.40-2.40)
Ramachandran outliers	177936	5158 (2.40-2.40)
Sidechain outliers	177891	5159 (2.40-2.40)
RSRZ outliers	164620	4642 (2.40-2.40)

The table below summarises the geometric issues observed across the polymeric chains and their fit to the electron density. The red, orange, yellow and green segments of the lower bar indicate the fraction of residues that contain outliers for ≥ 3 , 2, 1 and 0 types of geometric quality criteria respectively. A grey segment represents the fraction of residues that are not modelled. The numeric value for each fraction is indicated below the corresponding segment, with a dot representing fractions $\leq 5\%$. The upper red bar (where present) indicates the fraction of residues that have poor fit to the electron density. The numeric value is given above the bar.

Mol	Chain	Length	Quality of chain
1	H	244	<div> <div>3%</div> <div> <div></div> <div>70%</div> <div>23%</div> <div>7%</div> </div> </div>
2	L	211	<div> <div>%</div> <div> <div></div> <div>81%</div> <div>16%</div> <div>.</div> </div> </div>
3	A	10	<div> <div>30%</div> <div>20%</div> <div>50%</div> </div>

2 Entry composition [i](#)

There are 5 unique types of molecules in this entry. The entry contains 3558 atoms, of which 0 are hydrogens and 0 are deuteriums.

In the tables below, the ZeroOcc column contains the number of atoms modelled with zero occupancy, the AltConf column contains the number of residues with at least one atom in alternate conformation and the Trace column contains the number of residues modelled with at most 2 atoms.

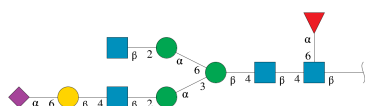
- Molecule 1 is a protein called Fab heavy chain.

Mol	Chain	Residues	Atoms					ZeroOcc	AltConf	Trace
1	H	227	Total	C	N	O	S	30	0	0
			1715	1086	289	334	6			

- Molecule 2 is a protein called Fab light chain.

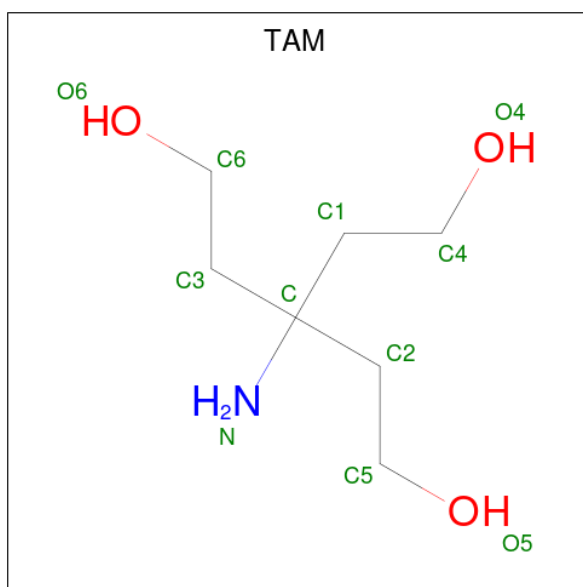
Mol	Chain	Residues	Atoms					ZeroOcc	AltConf	Trace
2	L	206	Total	C	N	O	S	28	0	0
			1556	976	264	312	4			

- Molecule 3 is an oligosaccharide called N-acetyl-alpha-neuraminic acid-(2-6)-beta-D-galactopyranose-(1-4)-2-acetamido-2-deoxy-beta-D-glucopyranose-(1-2)-alpha-D-mannopyranose-(1-3)-[2-acetamido-2-deoxy-beta-D-glucopyranose-(1-2)-alpha-D-mannopyranose-(1-6)]beta-D-mannopyranose-(1-4)-2-acetamido-2-deoxy-beta-D-glucopyranose-(1-4)-[alpha-L-fucopyranose-(1-6)]2-acetamido-2-deoxy-beta-D-glucopyranose.



Mol	Chain	Residues	Atoms				ZeroOcc	AltConf	Trace
3	A	10	Total	C	N	O	0	0	0
			130	73	5	52			

- Molecule 4 is TRIS(HYDROXYETHYL)AMINOMETHANE (three-letter code: TAM) (formula: C₇H₁₇NO₃).



Mol	Chain	Residues	Atoms				ZeroOcc	AltConf
4	H	1	Total	C	N	O	0	0
			11	7	1	3		

- Molecule 5 is water.

Mol	Chain	Residues	Atoms		ZeroOcc	AltConf
5	H	77	Total	O	0	0
			77	77		
5	L	69	Total	O	0	0
			69	69		

4 Data and refinement statistics

Property	Value	Source
Space group	P 21 21 21	Depositor
Cell constants a, b, c, α , β , γ	67.79Å 67.79Å 94.11Å 90.00° 90.00° 90.00°	Depositor
Resolution (Å)	38.66 – 2.40 38.66 – 2.40	Depositor EDS
% Data completeness (in resolution range)	96.0 (38.66-2.40) 92.8 (38.66-2.40)	Depositor EDS
R_{merge}	(Not available)	Depositor
R_{sym}	0.16	Depositor
$\langle I/\sigma(I) \rangle$ ¹	0.33 (at 2.20Å)	Xtriage
Refinement program	PHENIX 1.8_1069	Depositor
R, R_{free}	0.201 , 0.249 0.203 , 0.251	Depositor DCC
R_{free} test set	834 reflections (4.89%)	wwPDB-VP
Wilson B-factor (Å ²)	27.4	Xtriage
Anisotropy	0.283	Xtriage
Bulk solvent k_{sol} (e/Å ³), B_{sol} (Å ²)	0.34 , 43.4	EDS
L-test for twinning ²	$\langle L \rangle = 0.46$, $\langle L^2 \rangle = 0.29$	Xtriage
Estimated twinning fraction	0.095 for k,h,-l	Xtriage
F_o, F_c correlation	0.93	EDS
Total number of atoms	3558	wwPDB-VP
Average B, all atoms (Å ²)	32.0	wwPDB-VP

Xtriage's analysis on translational NCS is as follows: *The largest off-origin peak in the Patterson function is 7.25% of the height of the origin peak. No significant pseudotranslation is detected.*

¹Intensities estimated from amplitudes.

²Theoretical values of $\langle |L| \rangle$, $\langle L^2 \rangle$ for acentric reflections are 0.5, 0.333 respectively for untwinned datasets, and 0.375, 0.2 for perfectly twinned datasets.

5 Model quality [i](#)

5.1 Standard geometry [i](#)

Bond lengths and bond angles in the following residue types are not validated in this section: BMA, GAL, FUC, TAM, MAN, SIA, NAG

The Z score for a bond length (or angle) is the number of standard deviations the observed value is removed from the expected value. A bond length (or angle) with $|Z| > 5$ is considered an outlier worth inspection. RMSZ is the root-mean-square of all Z scores of the bond lengths (or angles).

Mol	Chain	Bond lengths		Bond angles	
		RMSZ	$\# Z > 5$	RMSZ	$\# Z > 5$
1	H	0.36	0/1759	0.49	0/2399
2	L	0.21	0/1598	0.47	1/2186 (0.0%)
All	All	0.30	0/3357	0.48	1/4585 (0.0%)

There are no bond length outliers.

All (1) bond angle outliers are listed below:

Mol	Chain	Res	Type	Atoms	Z	Observed(°)	Ideal(°)
2	L	82	ASP	CB-CA-C	-5.01	100.37	110.40

There are no chirality outliers.

There are no planarity outliers.

5.2 Too-close contacts [i](#)

In the following table, the Non-H and H(model) columns list the number of non-hydrogen atoms and hydrogen atoms in the chain respectively. The H(added) column lists the number of hydrogen atoms added and optimized by MolProbity. The Clashes column lists the number of clashes within the asymmetric unit, whereas Symm-Clashes lists symmetry-related clashes.

Mol	Chain	Non-H	H(model)	H(added)	Clashes	Symm-Clashes
1	H	1715	0	1677	44	0
2	L	1556	0	1497	26	0
3	A	130	0	110	8	0
4	H	11	0	17	3	0
5	H	77	0	0	3	0
5	L	69	0	0	1	0
All	All	3558	0	3301	76	0

The all-atom clashscore is defined as the number of clashes found per 1000 atoms (including hydrogen atoms). The all-atom clashscore for this structure is 12.

The worst 5 of 76 close contacts within the same asymmetric unit are listed below, sorted by their clash magnitude.

Atom-1	Atom-2	Interatomic distance (Å)	Clash overlap (Å)
2:L:54:ARG:HD3	2:L:58:ILE:HG22	1.55	0.88
3:A:2:NAG:H83	3:A:8:MAN:O3	1.83	0.78
2:L:95:VAL:HG13	2:L:95(A):PRO:HD2	1.66	0.76
1:H:4:LEU:HD21	1:H:34:TRP:HZ3	1.56	0.70
3:A:7:SIA:H91	3:A:7:SIA:O1A	1.92	0.69

There are no symmetry-related clashes.

5.3 Torsion angles [i](#)

5.3.1 Protein backbone [i](#)

In the following table, the Percentiles column shows the percent Ramachandran outliers of the chain as a percentile score with respect to all X-ray entries followed by that with respect to entries of similar resolution.

The Analysed column shows the number of residues for which the backbone conformation was analysed, and the total number of residues.

Mol	Chain	Analysed	Favoured	Allowed	Outliers	Percentiles	
1	H	223/244 (91%)	221 (99%)	2 (1%)	0	100	100
2	L	204/211 (97%)	200 (98%)	4 (2%)	0	100	100
All	All	427/455 (94%)	421 (99%)	6 (1%)	0	100	100

There are no Ramachandran outliers to report.

5.3.2 Protein sidechains [i](#)

In the following table, the Percentiles column shows the percent sidechain outliers of the chain as a percentile score with respect to all X-ray entries followed by that with respect to entries of similar resolution.

The Analysed column shows the number of residues for which the sidechain conformation was analysed, and the total number of residues.

Mol	Chain	Analysed	Rotameric	Outliers	Percentiles	
1	H	194/211 (92%)	190 (98%)	4 (2%)	48	69
2	L	172/177 (97%)	172 (100%)	0	100	100
All	All	366/388 (94%)	362 (99%)	4 (1%)	70	84

All (4) residues with a non-rotameric sidechain are listed below:

Mol	Chain	Res	Type
1	H	12	VAL
1	H	68	ASN
1	H	164	HIS
1	H	171	GLN

Sometimes sidechains can be flipped to improve hydrogen bonding and reduce clashes. All (1) such sidechains are listed below:

Mol	Chain	Res	Type
2	L	38	HIS

5.3.3 RNA ⓘ

There are no RNA molecules in this entry.

5.4 Non-standard residues in protein, DNA, RNA chains ⓘ

There are no non-standard protein/DNA/RNA residues in this entry.

5.5 Carbohydrates ⓘ

10 monosaccharides are modelled in this entry.

In the following table, the Counts columns list the number of bonds (or angles) for which Mogul statistics could be retrieved, the number of bonds (or angles) that are observed in the model and the number of bonds (or angles) that are defined in the Chemical Component Dictionary. The Link column lists molecule types, if any, to which the group is linked. The Z score for a bond length (or angle) is the number of standard deviations the observed value is removed from the expected value. A bond length (or angle) with $|Z| > 2$ is considered an outlier worth inspection. RMSZ is the root-mean-square of all Z scores of the bond lengths (or angles).

Mol	Type	Chain	Res	Link	Bond lengths			Bond angles		
					Counts	RMSZ	# $ Z > 2$	Counts	RMSZ	# $ Z > 2$
3	NAG	A	1	1,3	14,14,15	1.38	2 (14%)	17,19,21	1.76	5 (29%)

Mol	Type	Chain	Res	Link	Bond lengths			Bond angles		
					Counts	RMSZ	# Z > 2	Counts	RMSZ	# Z > 2
3	FUC	A	10	3	10,10,11	0.25	0	14,14,16	0.65	0
3	NAG	A	2	3	14,14,15	0.57	0	17,19,21	1.12	2 (11%)
3	BMA	A	3	3	11,11,12	0.60	0	15,15,17	1.39	2 (13%)
3	MAN	A	4	3	11,11,12	0.32	0	15,15,17	0.52	0
3	NAG	A	5	3	14,14,15	1.60	2 (14%)	17,19,21	1.87	5 (29%)
3	GAL	A	6	3	11,11,12	0.22	0	15,15,17	0.59	0
3	SIA	A	7	3	20,20,21	0.59	0	21,28,31	0.90	1 (4%)
3	MAN	A	8	3	11,11,12	0.65	0	15,15,17	0.97	1 (6%)
3	NAG	A	9	3	14,14,15	1.54	4 (28%)	17,19,21	2.66	8 (47%)

In the following table, the Chirals column lists the number of chiral outliers, the number of chiral centers analysed, the number of these observed in the model and the number defined in the Chemical Component Dictionary. Similar counts are reported in the Torsion and Rings columns. '-' means no outliers of that kind were identified.

Mol	Type	Chain	Res	Link	Chirals	Torsions	Rings
3	NAG	A	1	1,3	-	2/6/23/26	0/1/1/1
3	FUC	A	10	3	-	-	0/1/1/1
3	NAG	A	2	3	-	1/6/23/26	0/1/1/1
3	BMA	A	3	3	-	0/2/19/22	0/1/1/1
3	MAN	A	4	3	-	0/2/19/22	0/1/1/1
3	NAG	A	5	3	-	0/6/23/26	0/1/1/1
3	GAL	A	6	3	-	0/2/19/22	0/1/1/1
3	SIA	A	7	3	-	7/18/34/38	0/1/1/1
3	MAN	A	8	3	-	0/2/19/22	0/1/1/1
3	NAG	A	9	3	-	3/6/23/26	0/1/1/1

The worst 5 of 8 bond length outliers are listed below:

Mol	Chain	Res	Type	Atoms	Z	Observed(Å)	Ideal(Å)
3	A	5	NAG	O5-C1	-4.00	1.37	1.43
3	A	1	NAG	O5-C1	-2.80	1.39	1.43
3	A	9	NAG	O5-C1	-2.60	1.39	1.43
3	A	9	NAG	C2-N2	-2.44	1.42	1.46
3	A	1	NAG	O4-C4	-2.40	1.37	1.43

The worst 5 of 24 bond angle outliers are listed below:

Mol	Chain	Res	Type	Atoms	Z	Observed(°)	Ideal(°)
3	A	9	NAG	O5-C1-C2	-6.49	101.24	111.29

Continued on next page...

Continued from previous page...

Mol	Chain	Res	Type	Atoms	Z	Observed(°)	Ideal(°)
3	A	5	NAG	C1-O5-C5	4.90	118.75	112.19
3	A	9	NAG	C3-C4-C5	-4.30	102.43	110.23
3	A	1	NAG	O5-C5-C6	4.18	115.80	107.66
3	A	3	BMA	C1-O5-C5	-3.45	107.56	112.19

There are no chirality outliers.

5 of 13 torsion outliers are listed below:

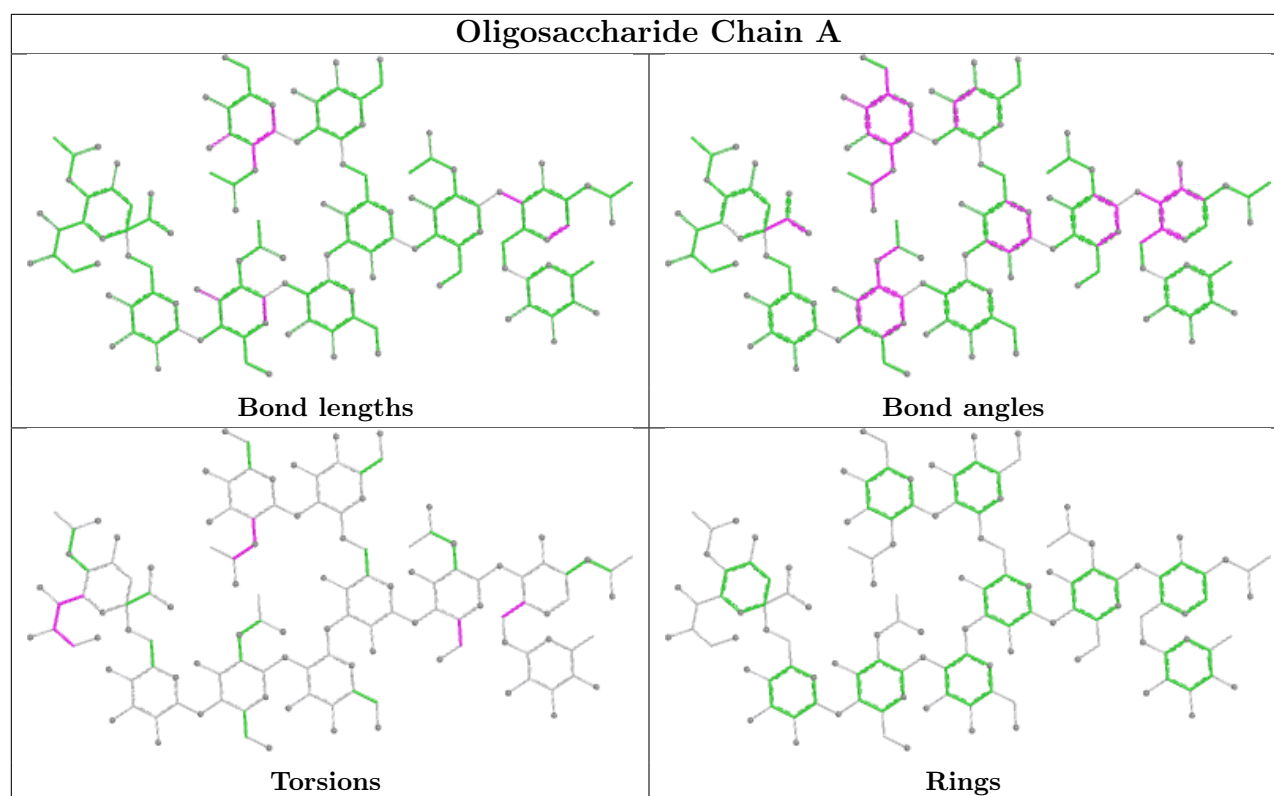
Mol	Chain	Res	Type	Atoms
3	A	7	SIA	C6-C7-C8-C9
3	A	7	SIA	C6-C7-C8-O8
3	A	7	SIA	O7-C7-C8-O8
3	A	7	SIA	C7-C8-C9-O9
3	A	7	SIA	O8-C8-C9-O9

There are no ring outliers.

5 monomers are involved in 8 short contacts:

Mol	Chain	Res	Type	Clashes	Symm-Clashes
3	A	2	NAG	3	0
3	A	1	NAG	1	0
3	A	8	MAN	1	0
3	A	5	NAG	1	0
3	A	7	SIA	4	0

The following is a two-dimensional graphical depiction of Mogul quality analysis of bond lengths, bond angles, torsion angles, and ring geometry for oligosaccharide.



5.6 Ligand geometry [i](#)

1 ligand is modelled in this entry.

In the following table, the Counts columns list the number of bonds (or angles) for which Mogul statistics could be retrieved, the number of bonds (or angles) that are observed in the model and the number of bonds (or angles) that are defined in the Chemical Component Dictionary. The Link column lists molecule types, if any, to which the group is linked. The Z score for a bond length (or angle) is the number of standard deviations the observed value is removed from the expected value. A bond length (or angle) with $|Z| > 2$ is considered an outlier worth inspection. RMSZ is the root-mean-square of all Z scores of the bond lengths (or angles).

Mol	Type	Chain	Res	Link	Bond lengths			Bond angles		
					Counts	RMSZ	# $ Z > 2$	Counts	RMSZ	# $ Z > 2$
4	TAM	H	311	-	10,10,10	0.74	0	12,12,12	2.30	5 (41%)

In the following table, the Chirals column lists the number of chiral outliers, the number of chiral centers analysed, the number of these observed in the model and the number defined in the Chemical Component Dictionary. Similar counts are reported in the Torsion and Rings columns. '-' means no outliers of that kind were identified.

Mol	Type	Chain	Res	Link	Chirals	Torsions	Rings
4	TAM	H	311	-	-	3/12/12/12	-

There are no bond length outliers.

All (5) bond angle outliers are listed below:

Mol	Chain	Res	Type	Atoms	Z	Observed(°)	Ideal(°)
4	H	311	TAM	C5-C2-C	-3.98	111.27	115.97
4	H	311	TAM	C4-C1-C	-3.95	111.31	115.97
4	H	311	TAM	O5-C5-C2	-3.10	102.64	111.33
4	H	311	TAM	C2-C-C1	-3.06	105.11	110.50
4	H	311	TAM	C6-C3-C	-2.80	112.67	115.97

There are no chirality outliers.

All (3) torsion outliers are listed below:

Mol	Chain	Res	Type	Atoms
4	H	311	TAM	N-C-C2-C5
4	H	311	TAM	C-C1-C4-O4
4	H	311	TAM	C3-C-C2-C5

There are no ring outliers.

1 monomer is involved in 3 short contacts:

Mol	Chain	Res	Type	Clashes	Symm-Clashes
4	H	311	TAM	3	0

5.7 Other polymers [i](#)

There are no such residues in this entry.

5.8 Polymer linkage issues [i](#)

There are no chain breaks in this entry.

6 Fit of model and data [i](#)

6.1 Protein, DNA and RNA chains [i](#)

In the following table, the column labelled ‘#RSRZ> 2’ contains the number (and percentage) of RSRZ outliers, followed by percent RSRZ outliers for the chain as percentile scores relative to all X-ray entries and entries of similar resolution. The OWAB column contains the minimum, median, 95th percentile and maximum values of the occupancy-weighted average B-factor per residue. The column labelled ‘Q< 0.9’ lists the number of (and percentage) of residues with an average occupancy less than 0.9.

Mol	Chain	Analysed	<RSRZ>	#RSRZ>2		OWAB(Å ²)	Q<0.9
1	H	227/244 (93%)	-0.17	7 (3%)	51 48	11, 29, 50, 84	7 (3%)
2	L	206/211 (97%)	-0.21	2 (0%)	79 76	16, 32, 46, 59	7 (3%)
All	All	433/455 (95%)	-0.19	9 (2%)	63 60	11, 30, 48, 84	14 (3%)

The worst 5 of 9 RSRZ outliers are listed below:

Mol	Chain	Res	Type	RSRZ
1	H	43	LYS	3.8
1	H	44	GLY	3.4
1	H	11	LEU	3.3
1	H	133	GLY	2.8
1	H	10	GLY	2.8

6.2 Non-standard residues in protein, DNA, RNA chains [i](#)

There are no non-standard protein/DNA/RNA residues in this entry.

6.3 Carbohydrates [i](#)

SUGAR-RSR INFOmissingINFO

6.4 Ligands [i](#)

In the following table, the Atoms column lists the number of modelled atoms in the group and the number defined in the chemical component dictionary. The B-factors column lists the minimum, median, 95th percentile and maximum values of B factors of atoms in the group. The column labelled ‘Q< 0.9’ lists the number of atoms with occupancy less than 0.9.

Mol	Type	Chain	Res	Atoms	RSCC	RSR	B-factors(\AA^2)	Q<0.9
4	TAM	H	311	11/11	0.74	0.17	38,53,73,86	0

6.5 Other polymers [i](#)

There are no such residues in this entry.